



Electrical Service Kit

2008 and Before Emotion 43 Model 21027 Lawn Mower

Model No. 117-4092

Form No. 3362-334 Rev A

Installation Instructions

Removing the Old Wire Harness

No Parts Required

Procedure

Important: The routing of the new wire harness is similar to that of the old. Therefore, take note of the routing of the old wire harness before removing it.

1. Lift up the rear deflector to expose the battery cover.
2. Open the battery cover, disconnect the battery from the old wire harness, and remove the battery.
3. Tip the lawn mower onto its left side.
4. Remove the blade.
5. Remove the three screws that hold the belt cover in place (Figure 1).

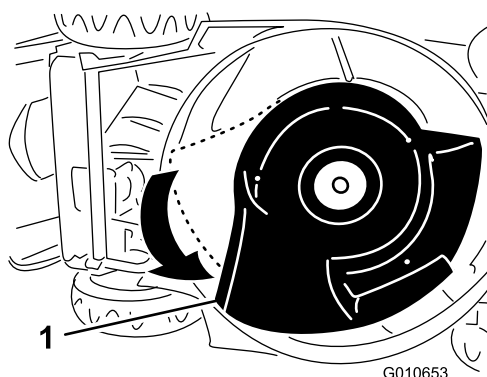


Figure 1

1. Belt cover

6. Rotate the belt cover counterclockwise to move it out of the way (Figure 1).
7. Disconnect the engine connector from the old wire harness from behind the engine (Figure 2).

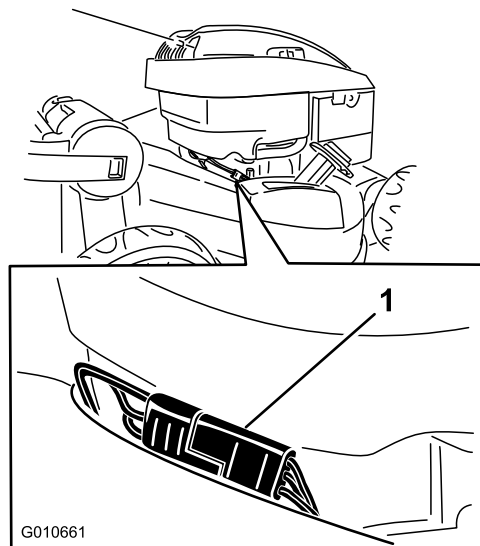


Figure 2

1. Engine connector

8. Disconnect the ignition connector on the old wire harness from the ignition switch on the underside of the upper handle (Figure 3).

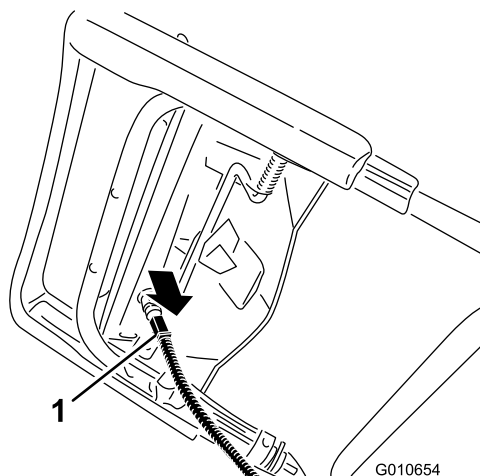


Figure 3

1. Ignition connector

9. Remove the cable ties that secure the old wire harness to the handle.
10. Remove and discard the old wire harness from the mower.

Note: Remove the old wire harness through the bottom of the mower housing.

Installing the New Wire Harness

Parts needed for this procedure:

1	Wire harness
1	Battery
2	Fuse

Procedure

1. Identify the following items on the new wire harness: an adhesive tab, a white band, and four connectors: one to the fuse holder, one to the battery connector, one to the engine connector, and one to the ignition switch (Figure 4).

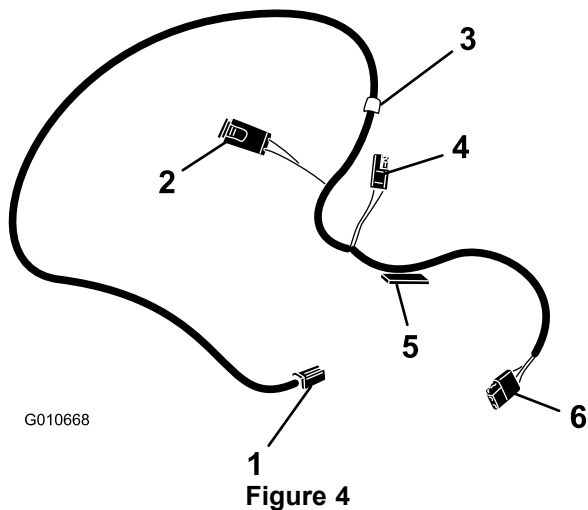


Figure 4

- | | |
|------------------------------|----------------------|
| 1. Ignition switch connector | 4. Battery connector |
| 2. Fuse holder | 5. Adhesive tab |
| 3. White band | 6. Engine connector |

2. Install the new wire harness by threading the ignition connector end first through the opening in the housing as shown in Figure 5.

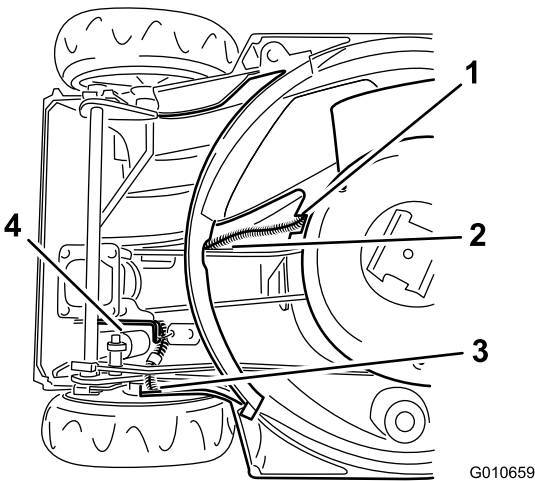


Figure 5

- | | |
|--|---|
| 1. Insert engine connector end of new wire harness here | 3. Ignition switch connector exits the mower housing here |
| 2. Insert ignition switch connector end of new wire harness here | 4. Height-of-cut cylinder |

Note: The ignition connector should come out on the left side of the mower housing under the handle.

Note: Ensure that the white strip on the new wire harness is visible just past the opening in the mower housing (Figure 6).

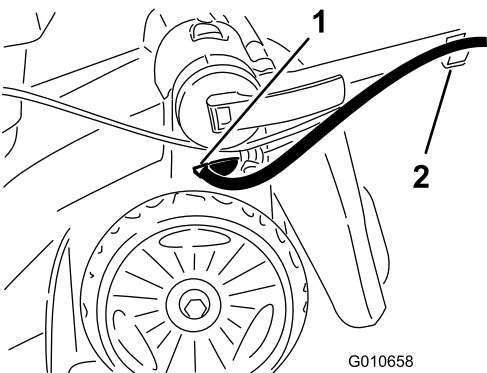


Figure 6

- | | |
|---------------------------------|----------------|
| 1. Opening in the mower housing | 2. Handle clip |
|---------------------------------|----------------|

3. Insert the engine connector into the opening as shown in Figure 5.
4. Connect the engine connector to the engine as shown in Figure 7.

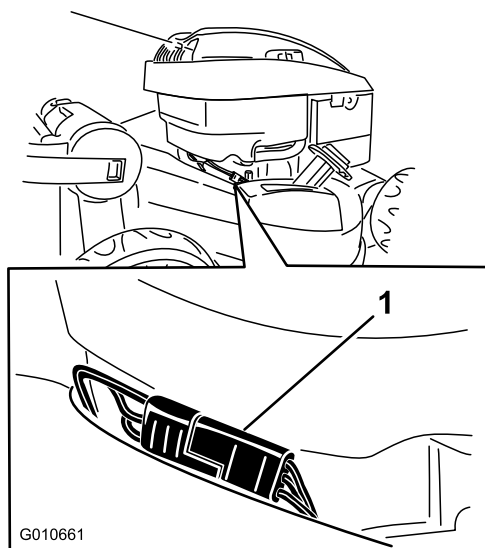


Figure 7

1. Engine connector

5. Tuck the engine connector and the exposed wiring harness into the housing behind the engine.
6. Locate the wire harness (with the fuse holder and the battery connector) inside the battery compartment (Figure 8).

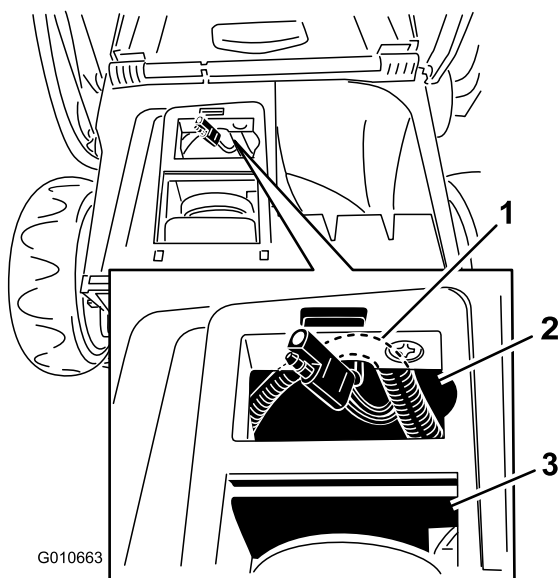


Figure 8

1. Wire harness (segment wrapped with electrical tape)
2. Battery compartment
3. Belt compartment

7. Insert the fuse holder first in front of the height-of-cut cylinder (Figure 5), then work it around the cylinder and down to the belt compartment (Figure 8 and Figure 9).

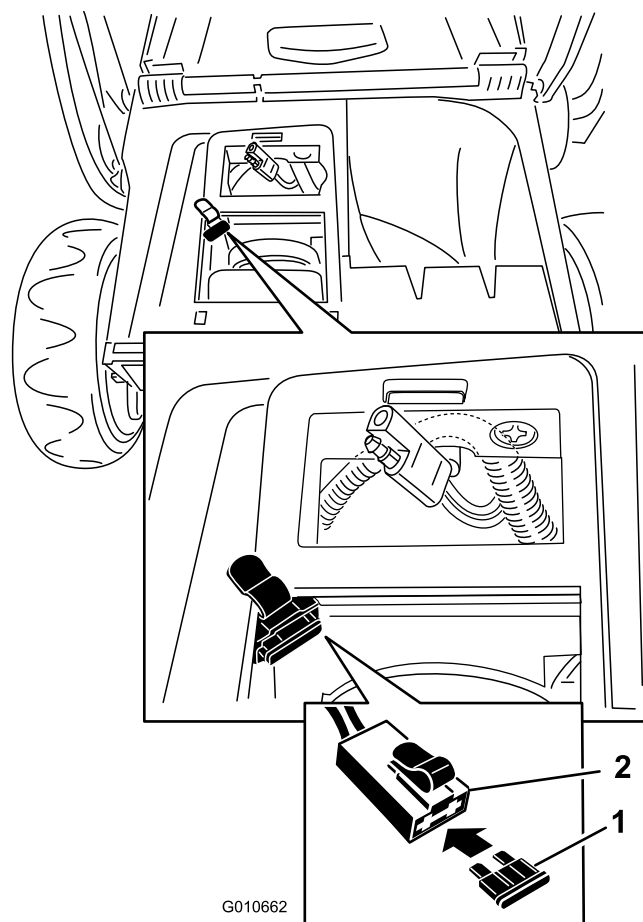


Figure 9

1. Fuse
2. Fuse holder

8. Clip the fuse holder on the new wire harness onto the upper left-hand corner of the belt compartment opening (Figure 9).
9. Tuck the wire harness between the aluminum boss and the black plastic rib (Figure 8).

Note: Ensure that the battery connector on the new wire harness is in position to connect to the battery when it is installed.

10. Remove most of the slack in the wire harness, and secure the wire harness with the adhesive tab (Figure 10).

Important: Before attaching the adhesive tab on the wire harness to the mower housing, thoroughly clean the area on the housing on which you will attach the tab. Wipe the area with denatured alcohol (or equivalent) before attaching the tab to the mower housing.

Note: Once it is attached, the adhesive tab is difficult to remove from a cleaned surface and cannot be reused. Therefore, take care that you properly locate the tab on the mower housing before attaching it.

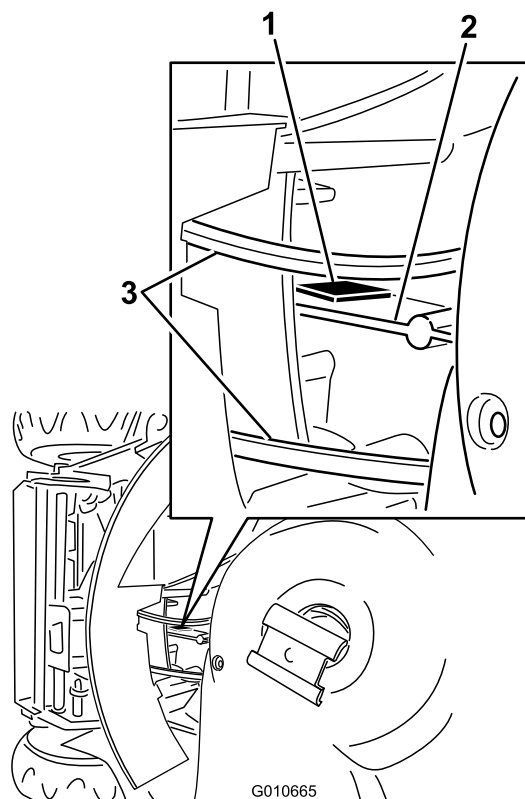


Figure 10

- 1. Adhesive tab
- 2. Rib
- 3. Drive belt

17. Connect the ignition connector to the ignition switch on the underside of the upper handle (Figure 12).

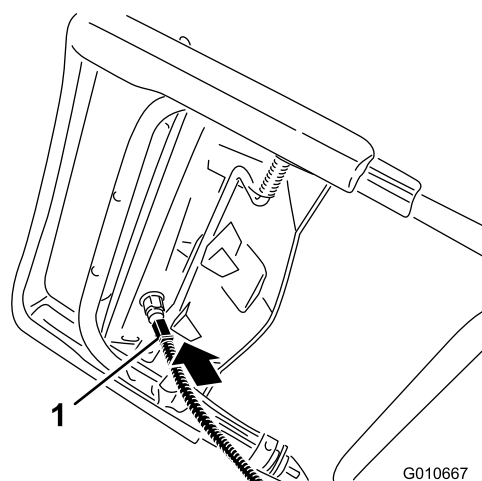


Figure 12

- 1. Ignition connector

18. Install the battery in the battery compartment.

19. Connect the battery to the battery connector on the wire harness.

20. Insert the fuse in the fuse holder (Figure 9).

21. Close the battery cover and the rear deflector.

- 11. Rotate the belt cover clockwise to return it to its original position.
- 12. Secure the belt cover with the three screws that you previously removed.
- 13. Install the blade.

Note: Torque the blade bolt to 50 N-m.

- 14. Return the mower to the operating position.
- 15. Insert the wire harness into the handle clip (Figure 6).
- 16. Secure the wire harness to the handle with 2 cable ties (Figure 11).

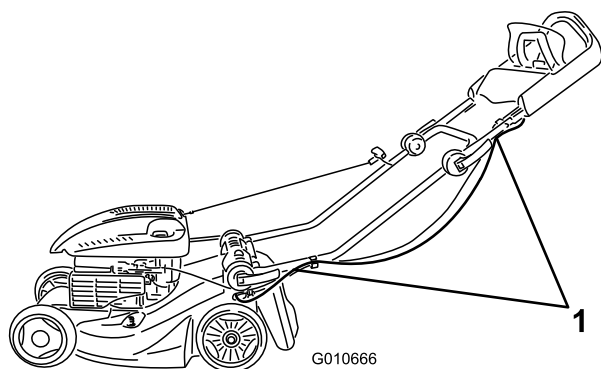


Figure 11

- 1. Cable ties here