



Workman 2004 and up ROPS Cab

Gas and Diesel Models

Model Number 07319 Cab with Doors

Model Number 07323 Cab without Doors



SAFETY INSTRUCTIONS

BEFORE OPERATING

1. Read and understand the contents of this material before operating the vehicle. Become thoroughly familiar with the controls, capabilities and proper use of the equipment. A free replacement manual is available by sending complete model and serial number to:

The TORO Company
8111 Lyndale Avenue South
Minneapolis, MN 55420-1196

2. This cab fits Toro Workman models with serial numbers starting with 24 or higher with gas or diesel engines.
3. **DO NOT** mount cab on units without ROPS (Roll Over Protective Structure).
4. **DO NOT** weld, cut, drill, modify or remove the ROPS in any matter.
5. **DO NOT** allow children to operate the vehicle. Do not allow adults to operate vehicle without proper instructions.
6. Keep all shields and safety devices in place. If a safety device, shield or decal malfunctions, becomes damaged or illegible, replace it before operation is commenced. To assure vehicle is in safe operating condition, tighten loose nuts, bolts and screws.
7. A cab with doors reduces payload capacity of vehicle by 420 lbs.

WHILE OPERATING

8. Verify capacity ratings for vehicle. Make sure GVW front axle and rear axle capacities are not exceeded. Make sure front axle capacity is not exceeded when adding additional attachments to front of vehicle with cab installed.
9. To avoid tip-over, operate vehicle only if equipped with dump box or other rear attachment weighing at least 200 lbs.
10. Avoid sudden stops and sharp turns.
11. Always use safety belts.
12. Never allow riders on top of cab at anytime.
13. Stay alert for hidden hazards and traffic.
14. Avoid sudden starts, excessive speeds and sudden stops.
15. Use extreme care when working close to fences, ditches or on hillsides.
16. Check clearance carefully before driving under any objects.
17. Avoid operating sideways on a steep slope whenever possible.
18. Always buckle safety belt while operating vehicle.
19. Wait for vehicle to come to a full stop and engage parking brake before leaving vehicle.

MAINTENANCE

20. To ensure cab is in safe operating condition, keep all fasteners tight.
21. Replace a damaged cab. Do not repair or revise. Any alterations to cab must be approved by manufacturer.
22. If cab is removed from vehicle, DO NOT remove the ROPS.
23. To be sure of optimum performance and safety, always purchase genuine TORO replacement parts and accessories. Replacement parts and accessories made by other manufacturers could be dangerous. Such use could void the product warranty of The Toro Company.
24. Thoroughly inspect cab and cab mounting periodically.

Rollover Protection Structures (ROPS) Inspection Guide

ROPS, like any other safety device, needs to be periodically inspected to verify that the integrity of the device has not been compromised through normal machine use, misuse, age degradation, modifications, or rollovers.

Some mechanical discretion is essential, therefore personnel who inspect ROPS need to comprehend and understand the significance of issues like structural corrosion, cracks, and deformation. Conservatism is the essential rule – if in doubt, remove the machine from service and contact the ROPS manufacturer for assistance. Certain conditions will absolutely render the ROPS unusable. Examples are:

- Permanent deformation or twisting
- Missing, damaged, or loose mounting hardware
- Mounting hardware that is of a grade lesser than specified
- Any cracks in the structure (structural members and/or welds)
- Significant corrosion
- Modifications, i.e. unauthorized welds and holes
- Missing or unreadable ROPS label(s)
- Applicable ROPS/machine model not specified on the ROPS label
- Machine GVW (including attachments, restrained payload, fuel and operator) in excess of the maximum weight specified on the ROPS label
- Missing, damaged or unusable operator restraint devices. (i.e. seatbelts)
- Any unauthorized repair
- Incomplete/improper installation

Other conditions may require imminent service but may not render the unit immediately unusable. Examples are:

- Faded paint
- Faded, hard to read ROPS label(s)
- Heavily soiled operator restraint (seatbelt)
- Slightly corroded mounting hardware

ROPS must be inspected immediately after any type of collision, rollover or impact. If any damage is evident, the ROPS must be removed from service, repaired and/or replaced.

When a ROPS is removed or reinstalled, mounting hardware must be examined for signs of over stressing. Damaged mounting hardware must be replaced before placing the ROPS back in service.

Operators are to be instructed to properly adjust and use restraints, seatbelts, at all times.

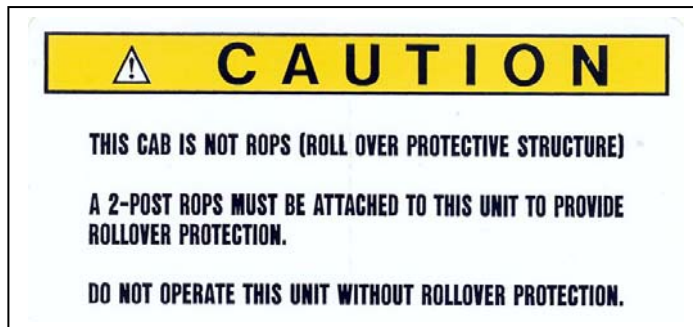


SAFETY AND INSTRUCTIONS DECALS

The following decals are to be installed on the cab. If any become illegible, replace them. The decal part number is listed below and in the parts list. Replacement decals can be ordered from your Authorized Toro Distributor.



LOCATED ABOVE WINDSHIELD, LEFT SIDE
(PART NUMBER 94-5274)



LOCATED ABOVE WINDSHIELD, LEFT SIDE
(PART NUMBER 108-3035)



LOCATED RIGHT SIDE OF CAB NEAR FUEL CAP
(PART NUMBER 87-5930)



LOCATED ABOVE WINDSHIELD, LEFT SIDE
(PART NUMBER 108-3103)

CAB UNIT

Application: Cab enclosure to shelter operator and passenger from weather, dust and noise. Complete enclosure is only obtained when standard equipped doors are on the vehicle and closed on 07319 only.

Description: Structure surrounding operator and passenger, includes a frame structure, roof, front and rear windows and windshield wiper. Left and right door assemblies are included with 07319 only.

Capacity: Workman vehicle payload is reduced by 420 lbs. when cab is installed.

Construction: Welded formed tube steel frame, steel sheet roof, front and rear panels, clear single pane tempered safety glass.

Controls: Wiper motor switch.

Features: Front window push-out for ventilation, front wiper, glass-steel frame doors with locks. Left-hand door has a slider window on 07319 only.

Mounting: Attaches to ROPS receiver brackets and is bolted through foot platform deck.

Dimensions:	Height from ground:	74.0 inches
	Height from top of ROPS:	2.50 inches
	Width at floor:	57.5 inches
	Width at roof:	50.5 inches
	Length:	47.0 inches

Weight Distribution:

See operator manual for standard weight distribution for model of Workman cab is being used on then add or subtract number listed.

	Front Axle Weight	Rear Axle Weight	Total Weight
Cab with doors on	+458 lbs.	-38 lbs.	+420 lbs.
Cab without doors on	+283 lbs.	-28 lbs.	+311 lbs.

CAB DOORS (on 07319 Only)

Application: Cab comes with lockable left and right rear hinged door assemblies as standard equipment.

Description: Rear hinged safety glass doors are installed into a metal frame that can be locked from the outside of the cab. The left door comes with a slider window. Both doors are equipped with gas dampeners.

Location: Doors mount to cab with mating lift off hinge pins on each side of the rear cab frame.

Construction: Steel tubular frame and steel skin panel weldment, with tempered safety glass and left hand aluminum slider guides.

Features and Controls: Both doors are lockable and are keyed from the outside. Left side door slider window locks from the inside.

Adjustments: Striker pins for interior door rotary latches.

Mounting: Mounts to cab at rear hinge locations and gas dampeners are retained with spring clips.

Set up instructions

The cab is designed to be only used with a Workman vehicle equipped with a ROPS and all decals must be installed and legible.

Important! If a Toro cab heater unit is to be installed, mount the heater unit before cab installation.

Preparation of Workman

1. Position vehicle on a clean level surface, raise or remove bed, stop engine, engage parking brake and remove key from ignition switch.
2. Disconnect positive cable from battery.

Installation of compression springs (White Springs)

3. Remove ROPS cover panel. See Figure 1.
4. Remove knobs from control levers, then remove center console control plate assembly.
5. Remove four (4) socket head screws that secure each seat to vehicle. Lift both seats from vehicle.
Note: If cab 07319 with doors is to be installed, the hip restraint and a washer on the front of seat adjuster slide need to be removed. Retain parts in case the doors are ever removed, the hip restraints must be reassembled to the seats. The seat belt assemblies must always remain assembled to the seats. See Figure 4.
6. Disconnect radiator overflow tank hose at radiator and plug the hose.
7. Carefully lift seat base from vehicle.
8. Jack up front of vehicle and secure with jack stands (see Jacking instructions in the Workman Operator's Manual).
9. Remove front wheels.
10. Remove front shock absorbers.
11. Remove screws that hold lift valve on center console to gain access to mounting screws of center console. See figure 3.
12. Remove screws that mount center console and move console out of the way to have better access to suspension springs. No need to disconnect any of the cables. See figure 4.
13. Install compression spring tool rod through holes in each spring cradle, then install nuts and washers on both ends of each rod. Tighten one nut on each rod to secure springs. NOTE: Extended portion of each compression spring tool must be on opposite ends so cap screws can be removed.
14. Remove lock nut and cap screw from lower end of each stabilizer link. See figure 2.
15. Remove lock nut and cap screw securing each spring cradle along with the stabilizer links.
16. Reverse procedures 3 through 13, to install compression springs provided in the kit.

Front Compression Spring Service

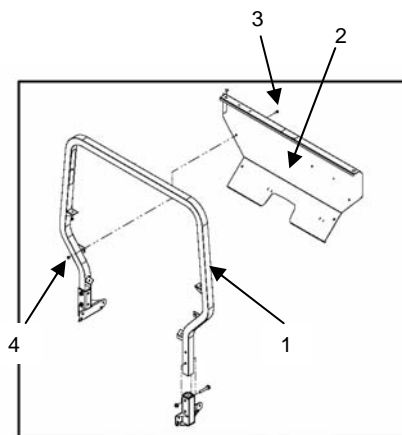


Figure 1

1. ROPS
2. ROPS Cover
3. Carriage Bolt (6 used)
4. Flange Lock Nuts (6 used)

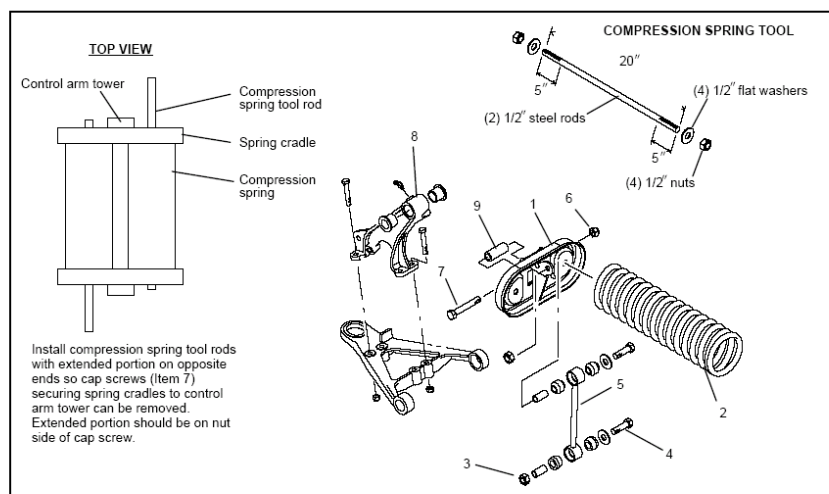


Figure 2

1. Spring cradle
2. Spring
3. Lock nut
4. Cap
5. Stabilizer link
6. Lock nut
7. Cap screw
8. Control arm tower
9. Spring pivot sleeve

January 8, 2009

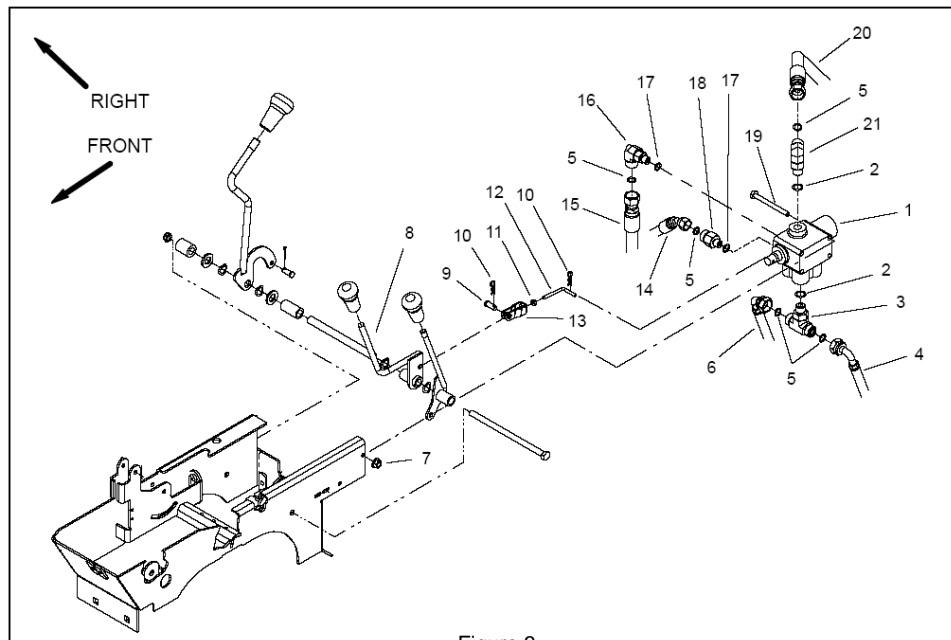


Figure 3

- | | | |
|---|---------------------------------------|---|
| 1. Lift valve | 8. Lift lever | 15. Hyd. hose (to female quick fitting) |
| 2. O-ring | 9. Clevis pin | 16. 90° hydraulic fitting |
| 3. Tee fitting | 10. Hairpin | 17. O-ring |
| 4. Hyd. hose (steering circuit return) | 11. Jam nut | 18. Hydraulic adapter |
| 5. O-ring | 12. Link rod | 19. Cap screw |
| 6. Hyd. hose (return to hydraulic filter) | 13. Clevis | 20. Hyd. hose (pressure supply) |
| 7. Flange nut | 14. Hyd. hose (to male quick fitting) | 21. 90° hydraulic fitting |

Seat Base

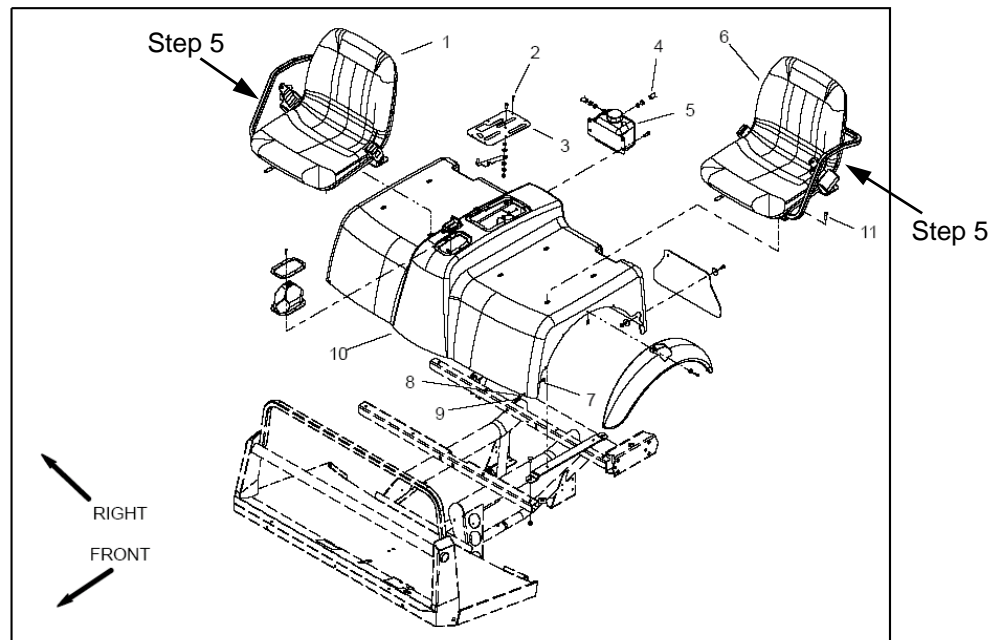


Figure 4

- | | | |
|---------------------|----------------------|---|
| 1. Passenger seat | 5. Coolant reservoir | 9. Cap screw |
| 2. Screw (6 used) | 6. Operator seat | 10. Seat base |
| 3. Control plate | 7. Lock nut | 11. Socket head screw (4 used per seat) |
| 4. Hose to radiator | 8. Flat washer | |

Installation of Rear Mounts

17. If the Workman does not have ROPS, a ROPS must be purchased from a TORO distributor. This cab must be mounted with a Toro Company manufactured ROPS.
18. Empty and layout contents of mount kit.
19. Install rear mounts to vehicle frame by removing and re-installing the (4) roll bar bolts and nuts. Hardware may be left at a snug fit, leaving just loose enough to adjust during installation of cab. **Be sure hardware is tightened after cab is installed, later in the instructions.** See Figures 5 & 6.

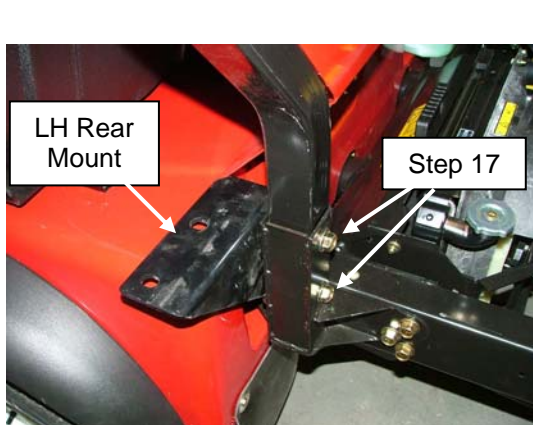


Figure 5
(Left Driver Side)

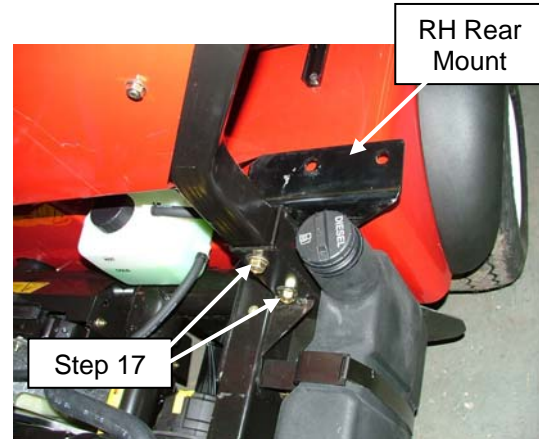


Figure 6
(Right Passenger Side)

20. Remove instruction manual tube holder and clamps from ROPS cover.
21. Re-install instruction manual tube holder and clamps in the inside of cab rear panel.

Installation of Front Mounts

22. Locate and clamp front mounts onto the outer edge of the floor panel. See Figure 7.



Figure 7

23. Remove doors.
24. Attach lift ears.
25. Using the lifting ears, detach cab from pallet and lift cab carefully onto the Workman unit.

26. Secure rear of cab to rear mounts on each side using (2) ½-13unc x 1.25" long bolts, (4) ½" flat washers and (2) ½-13unc nylock nuts.

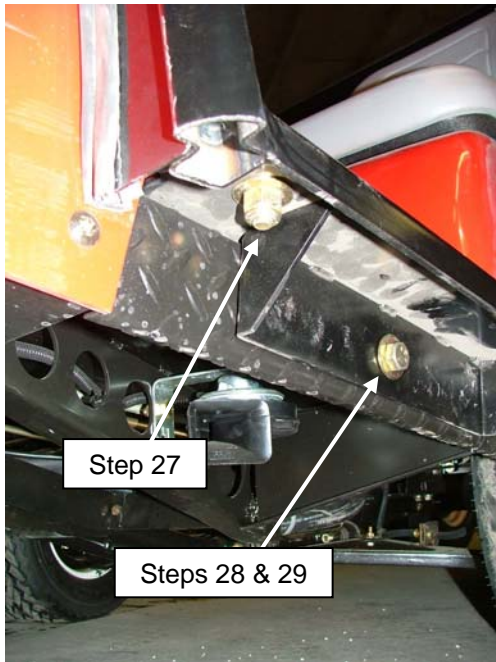


Figure 8

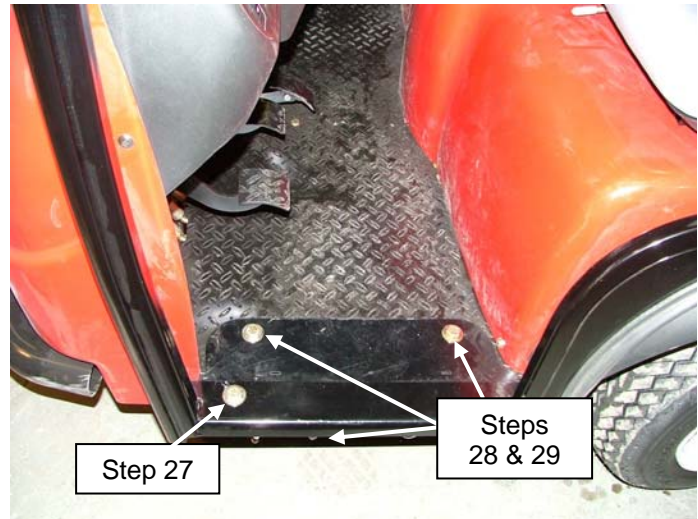


Figure 9

27. Center the cab and attach to front mounts using (1) ½-13unc x 1.25" long bolts, (2) ½" flat washers and (1) ½-13unc nylock nuts, each side. See Figures 8 and 9.
28. Using the supplied template, the mount part, transfer-drill (3) 17/32" diameter holes from each front mount through the operator's platform deck of the workman. See Figure 8 and 9. Figures are shown with step 29 completed.
29. Install (3) ½-13unc x 1.25" long bolts, (6) ½" flat washers and (3) ½-13unc nylock nuts, each front mount.
30. Install 3" rubber flap seals (Items 66 and 70) to rear ROPS mount brackets.
31. Install edge trim (Item 65) onto each left and right upper rear ROPS mount brackets (Items 58 and 59).
32. Install upper rear ROPS mount brackets with edge trim, onto the back of cab using (4) 3/8-16unc x 1.00" long hex head cap screws, (8) 3/8" flat washers and (4) 3/8-16unc nylock nuts.

Electrical Hookup

33. **Important!** Disconnect the vehicle electrical power before proceeding.
34. Remove relay/breaker harness assembly from bag and prepare for installation. Mount the relay/breaker harness assembly through an existing hole in the Workman frame, using the #10 screw, nut and lock washer, that holds the relay and circuit breaker together. See Figure 10.

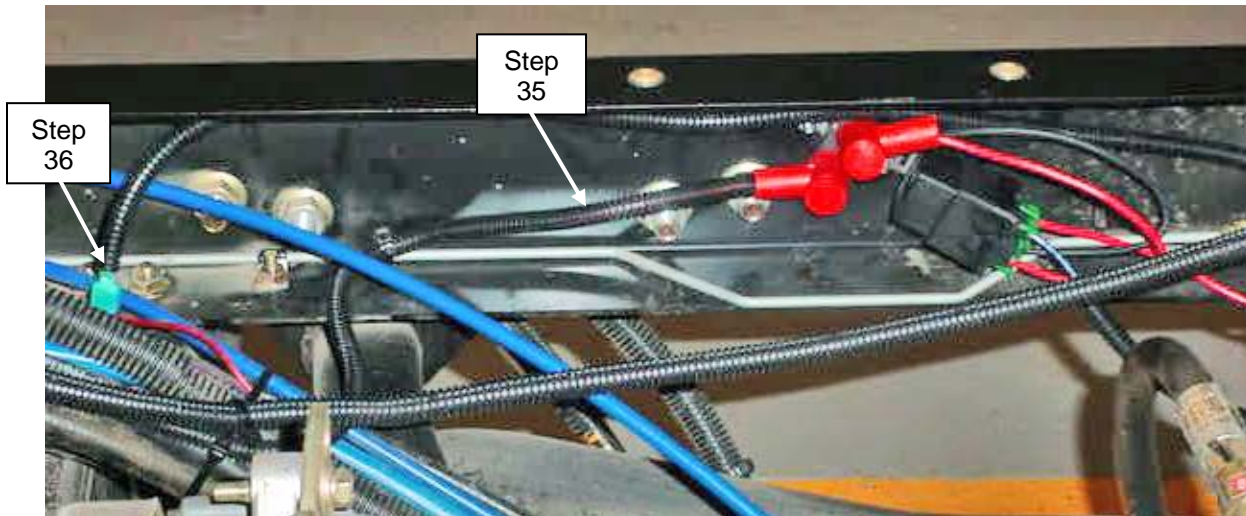


Figure 10

35. Route the red (hot) wire from the relay/breaker assembly to the starter solenoid and attach the ring stud to the starter solenoid hot terminal. Make sure the rubber boot is re-installed over solenoid hot terminal, if applicable. See Figure 10.
36. Connect the blue wire inline electrical splice on the wire relay breaker assembly to the red wire with the black stripe on the main vehicle harness. See Figure 10.
37. Neatly secure wires that were just connected.
38. The cab main power wire (12ga red wire) is routed down the left door post tube. Uncoil this wire and route it, within supplied black wire loom, through the left rear corner of the operator station and into the engine cavity. Connect red wire from relay the cab main power red wire.
39. Neatly secure all wires with nylon wire ties, away from hot surfaces and moving parts.
40. Reconnect the vehicle electrical power and check the cab electrical components (i.e. dome light, ventilation and wiper).
41. Install doors on each side. Adjust rear hinges if needed. Open and close the doors. The striker stud may also be adjusted for proper 2-stage rotary latch engagement.
42. **Make sure all installation hardware is fully tightened at this time.**
43. Remove and store the (2) lifting brackets and bracket bolts.
44. Cab installation is now complete.

Installation Instructions and Parts Manual**108-3000 Main Cab Assembly**

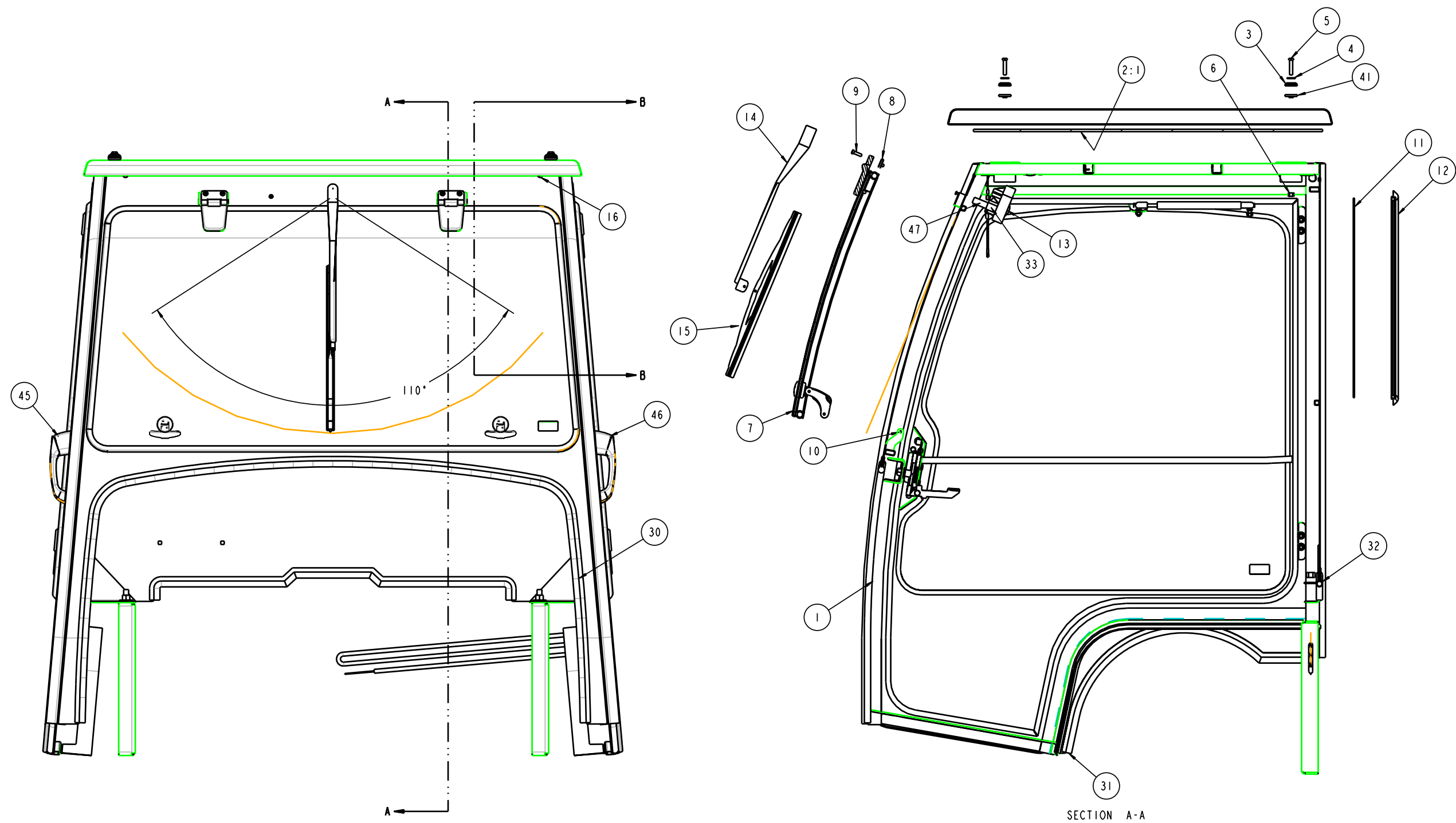
<u>ITEM</u>	<u>QTY</u>	<u>PART NUMBER</u>	<u>DESCRIPTION</u>
1	1	-	MAIN CAB WELDMENT, BLACK
2	1	108-3023	ROOF ASSEMBLY, RED
2:1	1	108-3070	HEADLINER FOAM
3	4	108-3024	WASHER, DELRIN CAP
4	8	3256-3	FLAT WASHER 5/16"
5	4	322-7	HEX HEAD CAP SCREW 5/16-18UNC, 1.50 LG
6	4	3296-29	NYLOC NUT 5/16-18UNC
7	1	108-3014	FRONT HINGED WINDOW ASSEMBLY
8	4	108-3124	NUT, RETAINING 1/4-20UNC
9	4	106-9518	MACHINE SCREW 1/4-20UNC x 1.00 PHIL 82 DEG
10	2	32121-1	ROLL PIN, REMOVABLE, .187 x .500
11	1	108-3025	REAR GLASS, TEMPERED 1/8"
12	1	108-3026	WINDOW RUBBER, REAR 1/8" GLASS x 129.50" LG
13	1	108-3027	WIPER MOTOR, 12VDC 1" SHAFT W/O SW
14	1	108-3028	WIPER ARM ADJUSTABLE RADIAL
15	1	108-3029	WIPER BLADE WIDE, WITH NARROW CARRIAGE MNT
16	3	104-9368	HOLE PLUG, PLASTIC 3/8"
17	1	108-3030	SWITCH PLATE OVERHEAD, BLACK
18	3	108-3031	ROCKER SWITCH PLUG
19	1	108-3032	ROCKER SWITCH 12VDC ON-OFF
20	1	108-3033	DOME LIGHT 12VDC
21	2	3249-11	MACHINE SCREW 6-32 x 1.50" LG REG SLOT
22	2	3255-24	LOCK WASHER NO. 6
23	2	3217-29	HEX NUT 6-32
24	1	108-3034	FUSE BLOCK, 6 TERMINAL
25	1	114241	FUSE, 7.5 AMP
26	7	32148-17	NUTSERT, 10-24UNC
27	2	3251-47	MACHINE SCREW ROUND HEAD 10-24UNC x 1.50 LG
28	3	3256-14	WASHER NO. 10
29	3	3251-2	MACHINE SCREW PAN HD PHIL, 10-24UNC x .50 LG
30	1	108-3086	BUBBLE RUBBER LARGE, 180 DEG, FRONT, 95.00" LG
31	2	108-3087	BUBBLE RUBBER SMALL, 180 DEG, SIDE, 33.07" LG
32	1	108-3088	BUBBLE RUBBER SMALL, 180 DEG, REAR, 40.50" LG
33	1	3296-2	NYLOCK NUT, 10-24UNC
34	1	108-3110	HOLE PLUG, PLASTIC 1.00"
35	2	240-6	HOLE GROMMET FOR 1-1/16" HOLE
36	4	108-3089	HOLE GROMMET FOR 3/4" HOLE
37	1	108-3035	DECAL, CAUTION NON-ROPS
38	1	-	DECAL, SERIAL NUMBER, TORO WORKMAN
39	2	108-3036	SEAL FLAP, CLIP ON 3.00", 35.75" LG
40	-	-	-
41	4	108-3038	WASHER RUBBER STEP
42	1	108-3037	DECAL, FUSE BLOCK
43	1	94-6710	FUSE, 2.0 AMP
44	1	108-3090	WIRE KIT
45	1	108-3039	DOOR ASSEMBLY RH

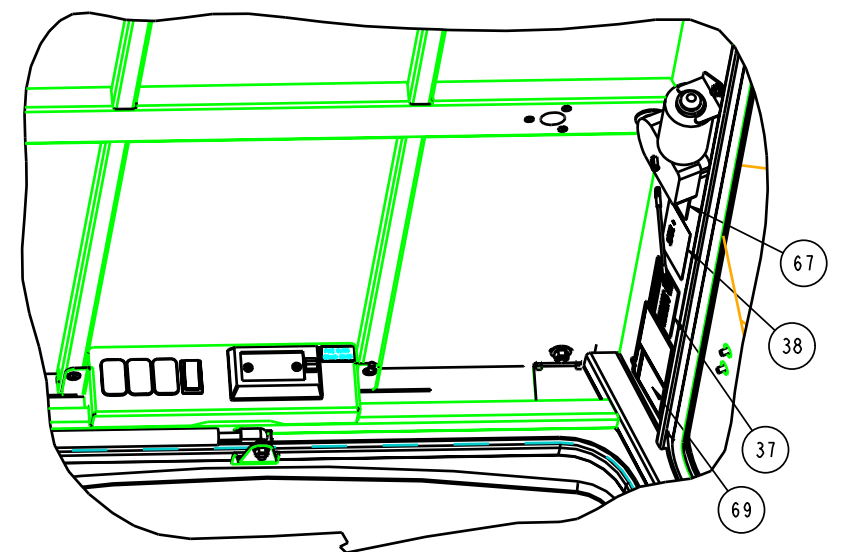
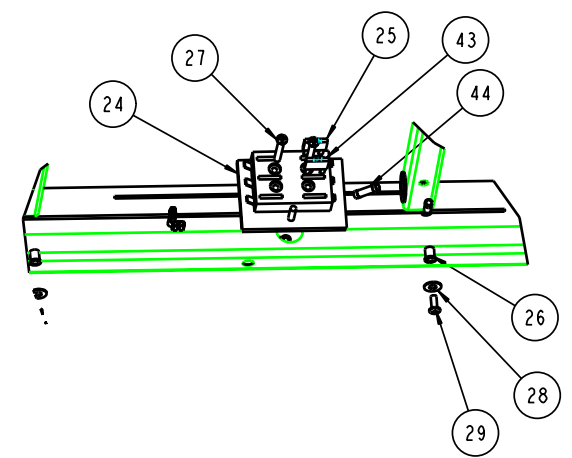
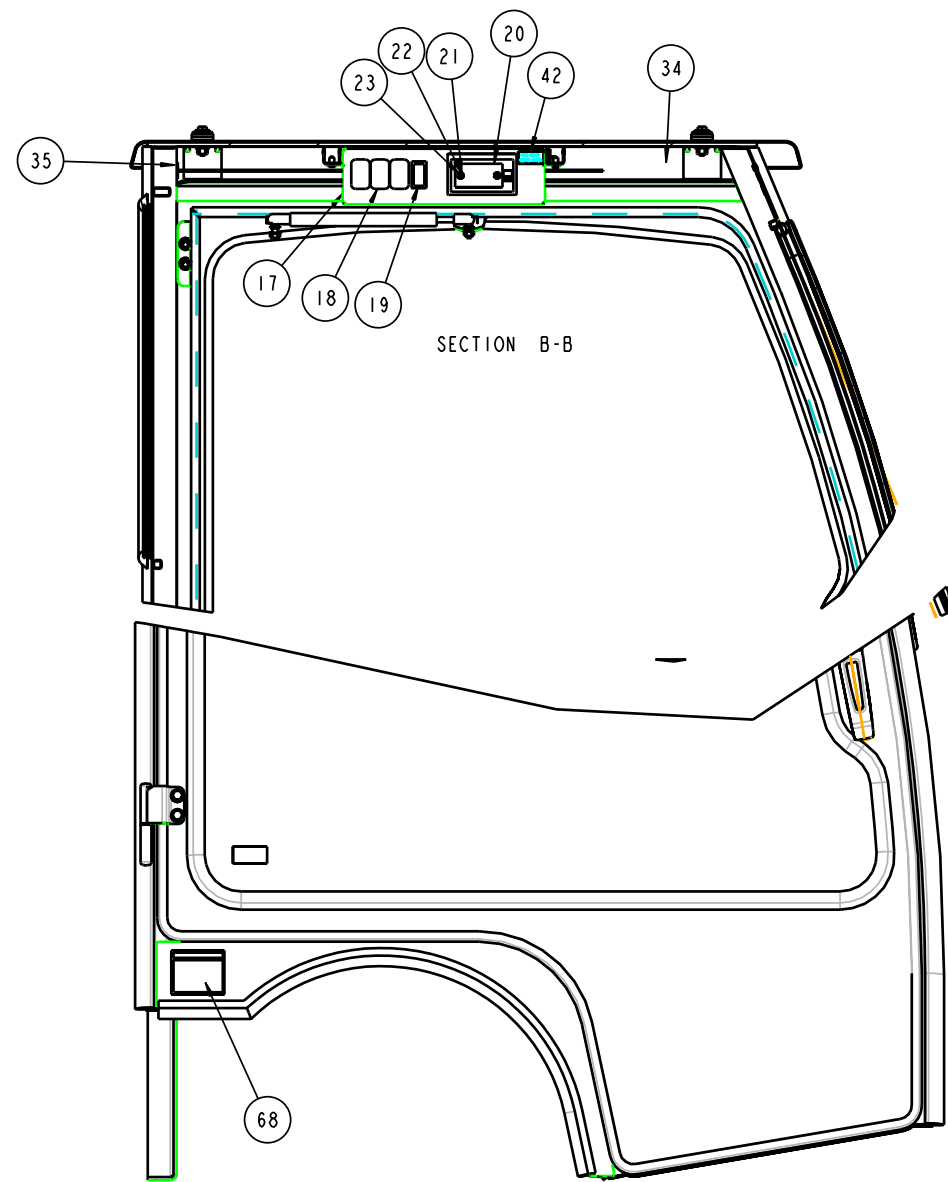
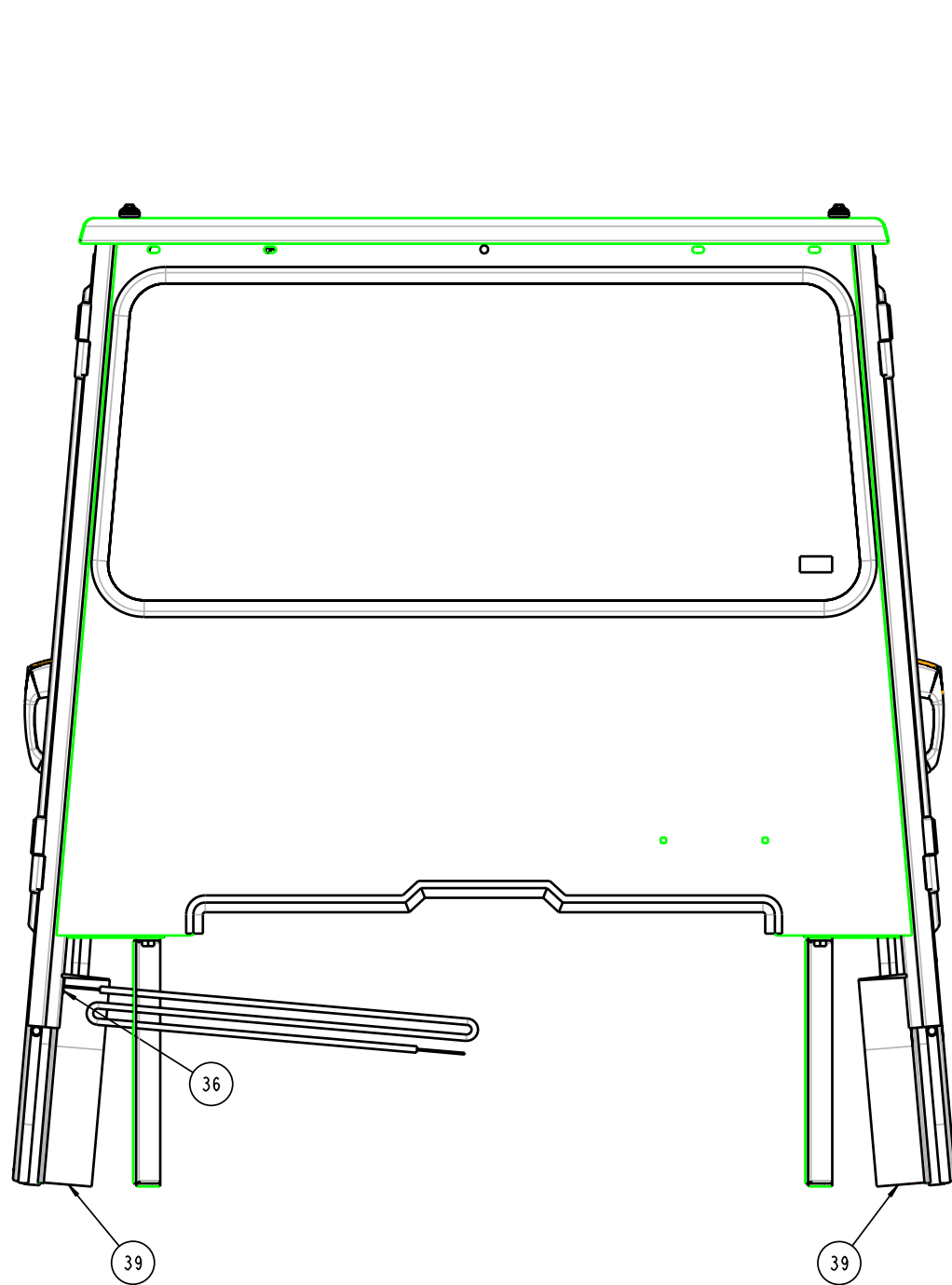
Installation Instructions and Parts Manual

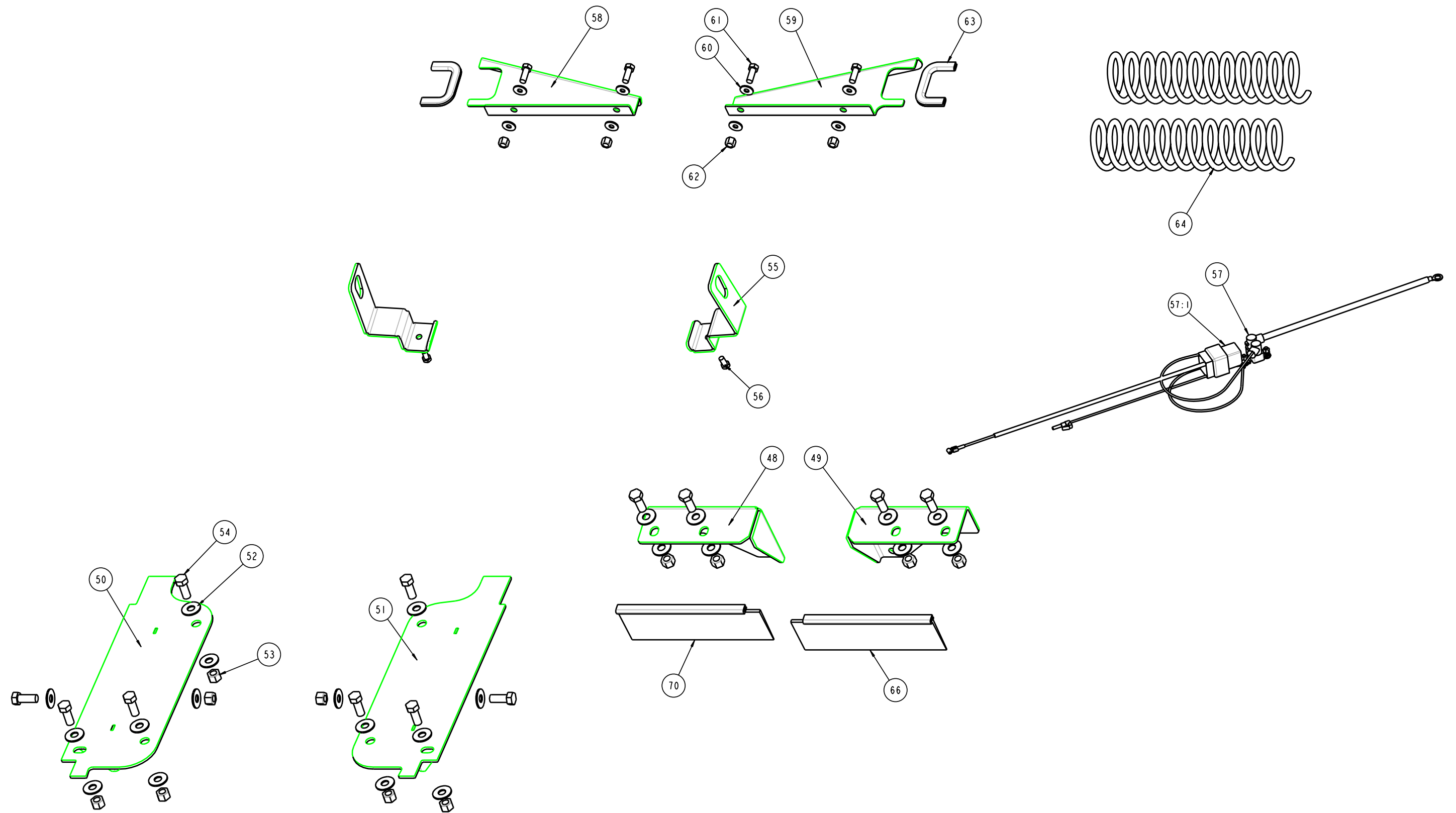
46	1	108-3040	DOOR ASSEMBLY LH WITH SLIDER WINDOW
47	2	3255-17	WASHER, EXT STAR #10
48	1	108-3018	REAR MOUNT WELDMENT RH, BLACK
49	1	108-3019	REAR MOUNT WELDMENT LH, BLACK
50	1	108-3020	FRONT MOUNT WELDMENT RH, BLACK
51	1	108-3021	FRONT MOUNT WELDMENT LH, BLACK
52	24	3256-6	FLAT WASHER
53	12	3296-23	NYLOCK NUT 1/2-13UNC
54	12	325-5	HEX HEAD CAP SCREW, 1/2-13UNC x 1.25 LG
55	2	108-3078	LIFT EAR. BLACK
56	2	322-2	HEX HEAD CAP SCREW, 5/16-18UNC x 5/8" LG
57	1	108-3022	WIRE RELAY BREAKER KIT
57:1	1	99-7430	RELAY
58	1	108-3079	ROPS BRACKET RH, BLACK
59	1	108-3080	ROPS BRACKET LH, BLACK
60	8	3256-3	FLAT WASHER, 5/16"
61	4	323-6	HEX HEAD CAP SCREW, 3/8-16UNC x 1.00" LG
62	4	3296-39	NYLOCK NUT, 3/8-16UNC
63	2	95-5686	PINCH EDGE CLIP, SMALL, 6.00" LG
64	2	108-3074	COMPRESSION SPRING
65	1	3351-892	MOUNT INSTRUCTION MANUAL
66	1	108-7038	SEAL FLAP, CLIP ON 3.00" RH
67	1	94-5274	DECAL –DANGER TIPOVER
68	1	87-5930	DECAL –FUEL
69	1	108-3103	DECAL –GVW
70	1	108-7037	SEAL FLAP, CLIP ON 3.00" LH

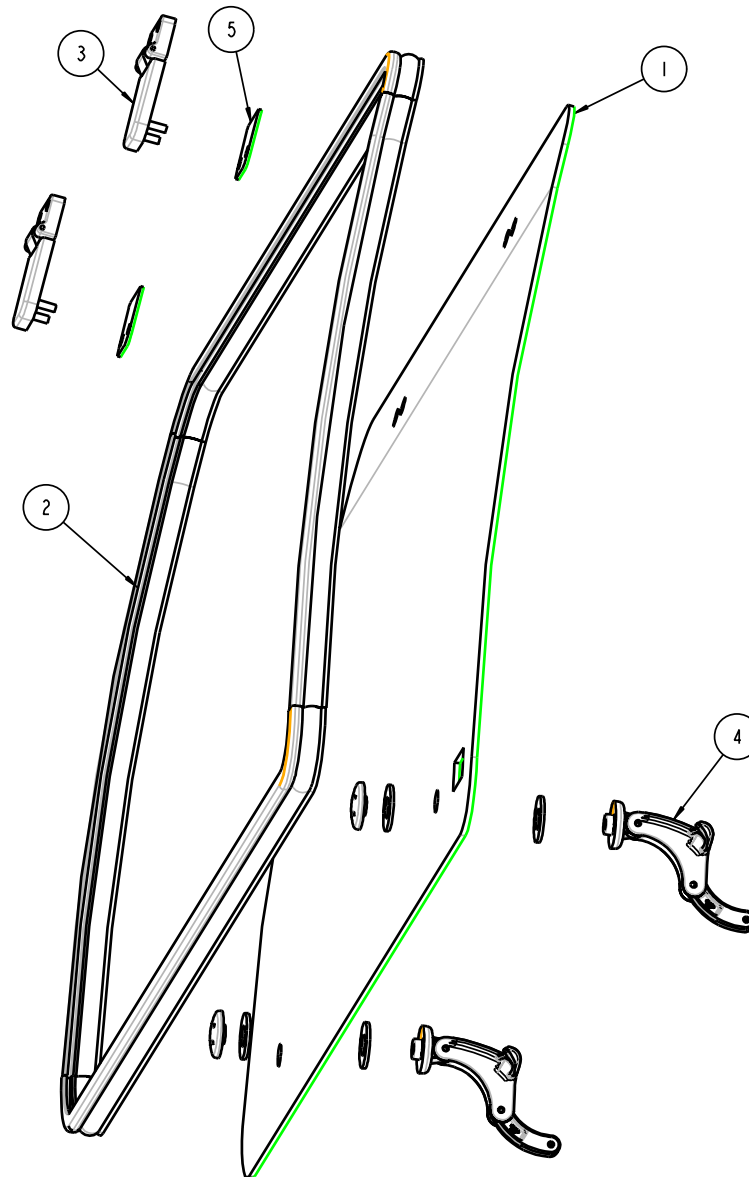
108-3014 Front Window Assembly

1	1	108-3077	FRONT BENT TEMPERED GLASS
2	1	108-3097	BUBBLE RUBBER 90 DEG FOR 1/4" GLASS, 145.00" LG
3	2	108-3015	HINGE WITH GASKET AND FASTENERS BLACK
4	2	108-3017	T-HANDLE CLOSED
5	2	108-3016	SHIM 12 GA BLACK









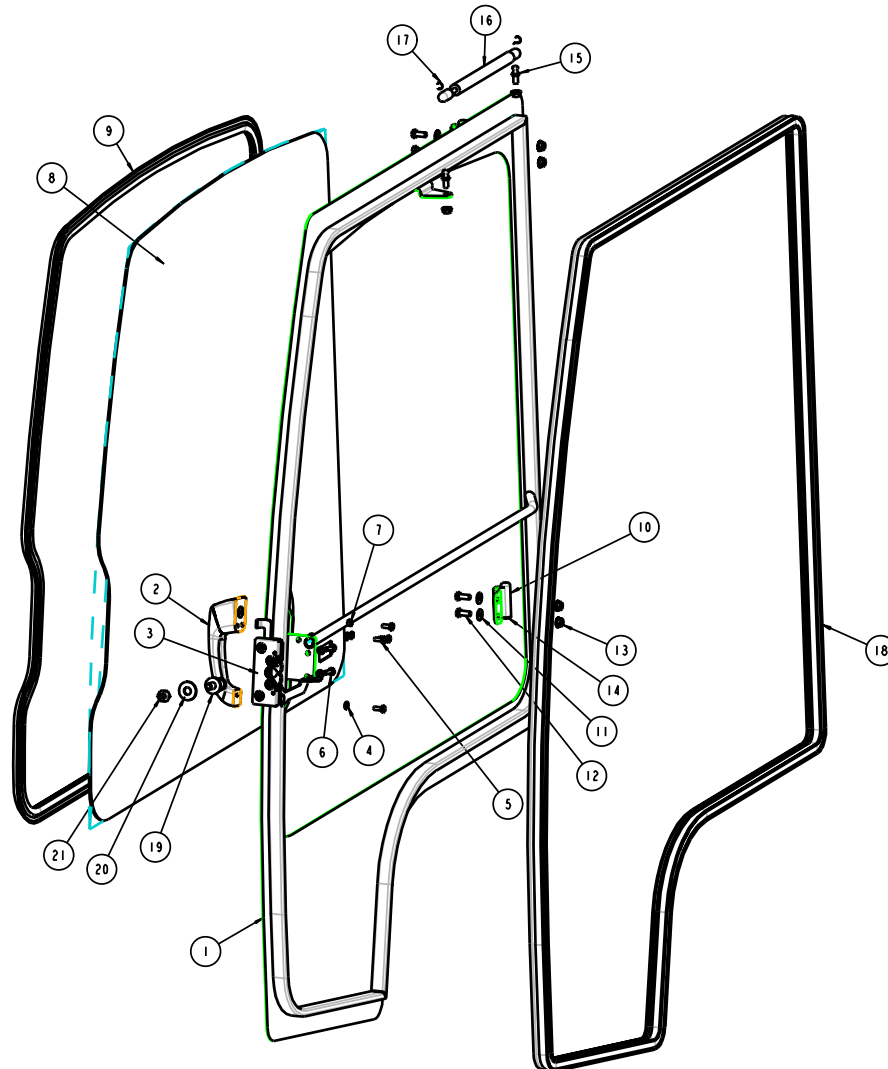
FRONT WINDOW ASSEMBLY 108-3014

Installation Instructions and Parts Manual**108-3039 Door Assembly RH (On model number 07319 only)**

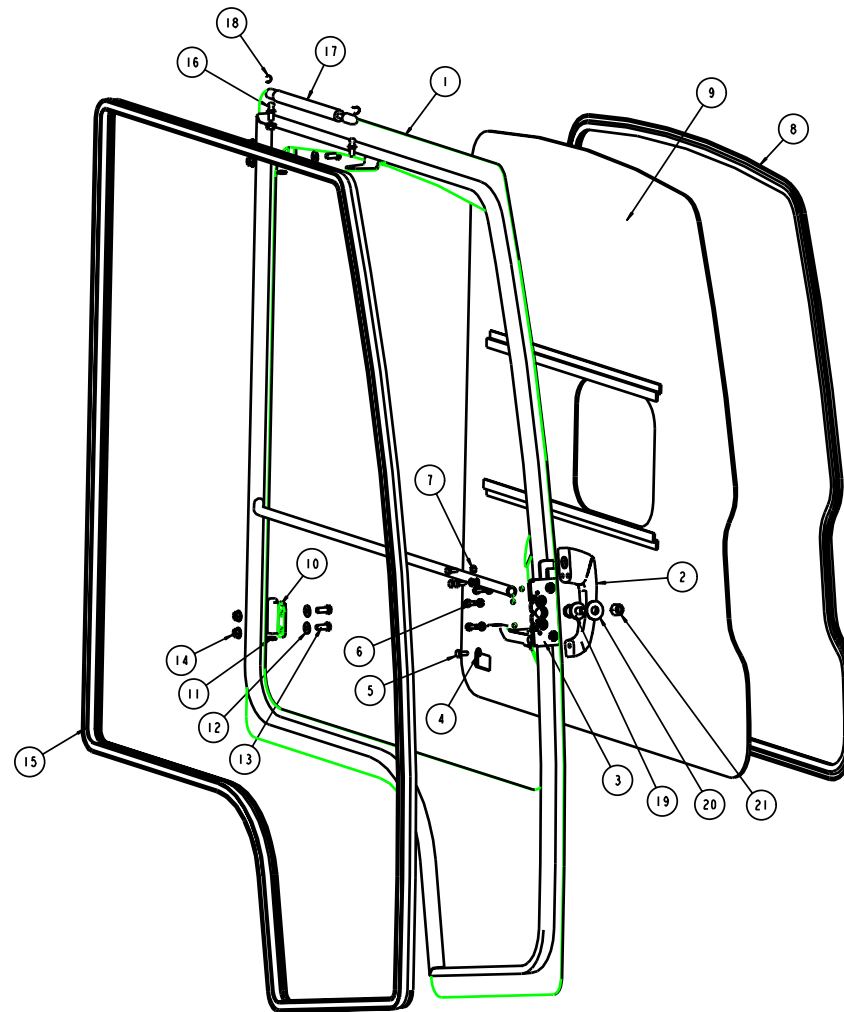
1	1	-	DOOR WELDMENT RH, BLACK
2	1	108-3041	GRAB HANDLE, EXTERIOR
3	1	108-3042	LATCH ROTARY LEVER TYPE
4	6	3253-3	LOCK WASHER 1/4"
5	4	33116-016	HEX HEAD CAP SCREW M6 x 15 x 1C
6	3	33116-025	HEX HEAD CAP SCREW M6 x 25 x 1C
7	1	33013-00	HEX NUT, M6 x 1C
8	1	108-3084	DOOR GLASS TEMPERED 1/8" TINTED GRAY
9	1	108-3043	WINDOW RUBBER, 146.75" LG
10	1	108-3044	DOOR HINGE WELDMENT, BLACK
11	2	3256-2	FLAT WASHER, 1/4"
12	4	322-3	HEX HEAD CAP SCREW, 5/16-18UNC x 3/4" LG
13	4	32128-44	HEX NUT SERRATED FLANGE, 5/16-18UNC
14	6	108-3045	HINGE WASHER, BRASS FOR 7/16" PIN
15	2	108-3096	BALL STUD FOR GAS SPRING
16	2	108-3094	GAS SPRING 6.00" STROKE 20 PSI
17	1	108-3095	GAS SPRING RETAINING CLIP
18	1	108-3075	BUBBLE RUBBER, 187.00" LG
19	1	108-3076	STRIKER STUD LONG
20	1	3256-57	FLAT WASHER 7/16"
21	1	3296-48	NYLOCK NUT 7/16-14UNC

108-3040 Door Assembly LH (On model number 07319 only)

1	1	-	DOOR WELDMENT LH, BLACK
2	1	108-3041	GRAB HANDLE, EXTERIOR
3	1	108-3046	LATCH ROTARY LEVER TYPE
4	6	3253-3	LOCK WASHER 1/4"
5	4	33116-016	HEX HEAD CAP SCREW M6 x 15 x 1C
6	3	33116-025	HEX HEAD CAP SCREW M6 x 25 x 1C
7	1	33013-00	HEX NUT, M6 x 1C
8	1	108-3081	WINDOW RUBBER, 146.75" LG
9	1	108-3085	DOOR GLASS TEMPERED 1/8" TINT GRAY w/ SLIDER
10	2	108-3013	DOOR HINGE WELDMENT, BLACK
11	2	108-3045	HINGE WASHER, BRASS FOR 7/16" PIN
12	4	3256-2	FLAT WASHER, 1/4"
13	4	322-3	HEX HEAD CAP SCREW, 5/16-18UNC x 3/4" LG
14	6	32128-44	HEX NUT SERRATED FLANGE, 5/16-18UNC
15	1	108-3075	BUBBLE RUBBER, 187.00" LG
16	2	108-3096	BALL STUD FOR GAS SPRING
17	1	108-3094	GAS SPRING 6.00" STROKE 20 PSI
18	1	108-3095	GAS SPRING RETAINING CLIP
19	1	108-3076	STRIKER STUD LONG
20	1	3256-57	FLAT WASHER 7/16"
21	1	3296-48	NYLOCK NUT 7/16-14UNC



RIGHT DOOR ASSEMBLY 108-3039 (ON 07319 ONLY)



LEFT DOOR ASSEMBLY 108-3040 (ON 07319 ONLY)