



## 72-in Recycler<sup>®</sup> Kit Z Master<sup>®</sup> G3 Riding Mower

Model No. 115-7469

### Parts Catalog

#### Ordering Replacement Parts

To order replacement parts, please supply the part number, the quantity, and the description of each part desired.

#### Understanding Reference Numbers

Each identified part in an illustration has a reference number. The reference number for a part also appears in the parts list, along with other information about the part.

This catalog uses two special reference number formats, one to indicate parts in a service assembly and another to indicate the quantity of a given part in an illustration.

#### Service Assembly Reference Numbers

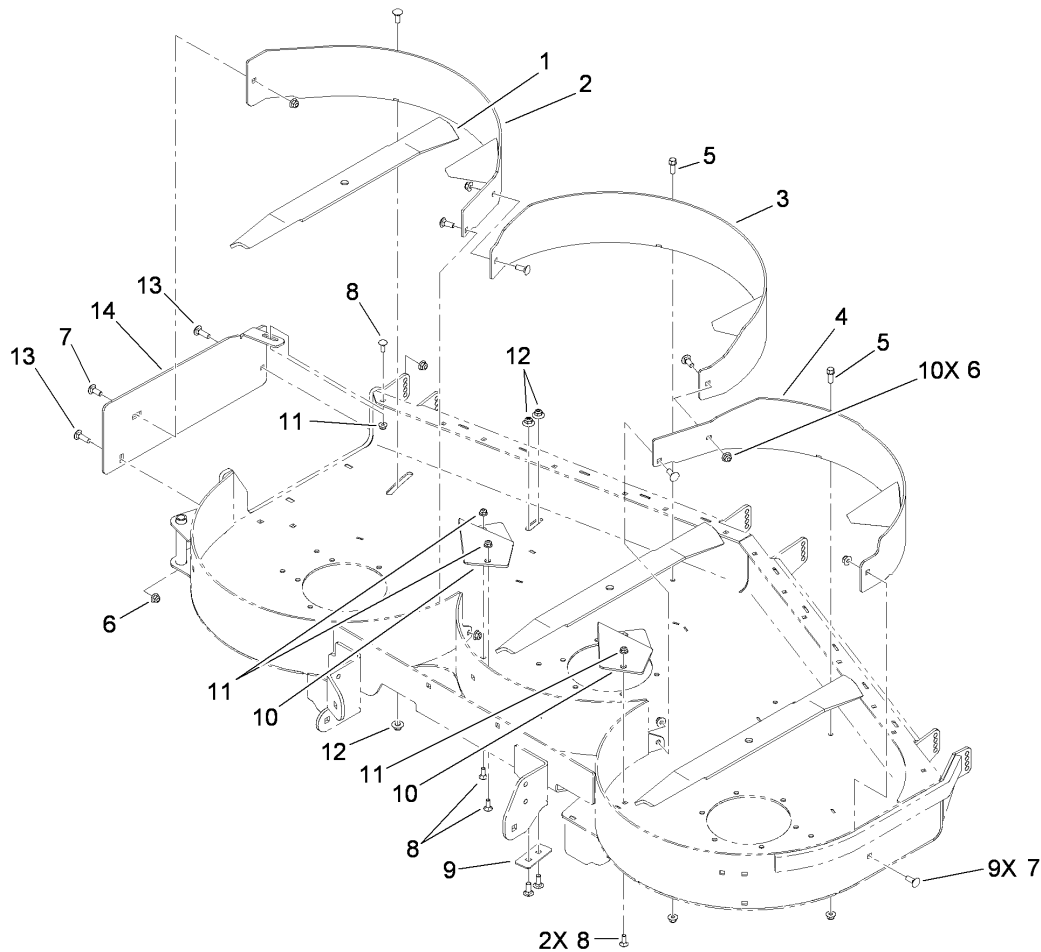
Parts in service assemblies have reference numbers in the form a:b. The a represents the reference number of the entire service assembly and the b represents a sequential number unique to each part within the service assembly.

For example, a wheel assembly might be identified by reference number 6, the tire by 6:1, the valve by 6:2, and the wheel by 6:3. When you order the assembly identified by reference number 6, you receive all parts identified by reference numbers 6:1, 6:2, and 6:3. However, you may also order any part individually. Reference numbers of this type appear in illustrations and in part lists.

#### Reference Numbers Indicating Quantity

In an illustration, if a reference number indicates more than one part, the reference number has the form nX y. The n represents the quantity of the part, the X is the multiplication symbol, and the y represents the reference number.

For example, in an illustration, the reference number 2X 37 means that two of the parts identified by reference number 37 are indicated.



**Recycler Assembly No. 115-7469**

Ref	Part No.	Qty.	Description				
1	105-7778-03	3	Blade-Recycler, 24.5 Inch				
2	115-7498-01	1	RH Baffle ASM				
3	115-7497-01	1	Center Baffle ASM				
4	115-7496-01	1	LH Baffle ASM				
5	92-1624	2	Screw-HWH				
6	104-8301	10	Nut-Flange, NI				
7	3231-2	9	Screw-CARR				
8	3230-16	5	Screw-CARR				
9	115-7429-01	1	Plate-Cover				
10	107-1616-01	2	Kicker				
11	104-8300	5	Nut-Flange, NI				
12	109-6658	3	Nut-Flange, NI (Split)				
13	3231-25	2	Screw-CARR				
14	115-7471-01	1	Plate-Cover, Discharge				