



Commercial Walk-Behind Mower Floating Deck T-Bar Gear with 36in TURBO FORCE® Cutting Unit

Model No. 30094 - 290001001 and up.

Parts Catalog

Ordering Replacement Parts

To order replacement parts, please supply the part number, the quantity, and the description of each part desired.

Understanding Reference Numbers

Each identified part in an illustration has a reference number. The reference number for a part also appears in the parts list, along with other information about the part.

This catalog uses two special reference number formats, one to indicate parts in a service assembly and another to indicate the quantity of a given part in an illustration.

Service Assembly Reference Numbers

Parts in service assemblies have reference numbers in the form a:b. The a represents the reference number of the entire service assembly and the b represents a sequential number unique to each part within the service assembly.

For example, a wheel assembly might be identified by reference number 6, the tire by 6:1, the valve by 6:2, and the wheel by 6:3. When you order the assembly identified by reference number 6, you receive all parts identified by reference numbers 6:1, 6:2, and 6:3. However, you may also order any part individually. Reference numbers of this type appear in illustrations and in part lists.

Reference Numbers Indicating Quantity

In an illustration, if a reference number indicates more than one part, the reference number has the form nX y. The n represents the quantity of the part, the X is the multiplication symbol, and the y represents the reference number.

For example, in an illustration, the reference number 2X 37 means that two of the parts identified by reference number 37 are indicated.

Contents

Description	Page	Description	Page
Engine and Clutch Assembly	3	Piston and Crankshaft Assembly Kawasaki FH430V-ES28	20
Power-Take-Off Idler and Weight Assembly	4	Valve and Camshaft Assembly Kawasaki FH430V-ES28	21
Fuel System Assembly	5	Lubrication Equipment Assembly Kawasaki FH430V-ES28	22
Lower Control Assembly	6	Cooling Equipment Assembly Kawasaki FH430V-ES28	23
Transmission Drive Assembly	7	Electric Equipment Assembly Kawasaki FH430V-ES28	24
Wheel Drive and Brake Assembly	8	Control Equipment Assembly Kawasaki FH430V-ES28	25
Upper Handle Assembly	9	Carburetor Assembly Kawasaki FH430V-ES28	26
Control Panel Assembly	10	Air Filter and Muffler Assembly Kawasaki FH430V-ES28	27
Carrier Frame Assembly	11	Fuel Tank and Valve Assembly Kawasaki FH430V-ES28	28
Deck Drive and Baffle Assembly	12	Starter Assembly Kawasaki FH430V-ES28	29
Deck Assembly No. 112-7080	13	Label Assembly Kawasaki FH430V-ES28	30
Lever Assembly No. 107-1664	14	Attachments and Accessories List	31
Spindle Assembly No. 110-0730	15		
Spindle Assembly No. 110-0728	16		
Outer Deck Assembly	17		
Deflector Assembly No. 110-0790	18		
Cylinder and Crankcase Assembly Kawasaki FH430V-ES28	19		

Part Description Abbreviations

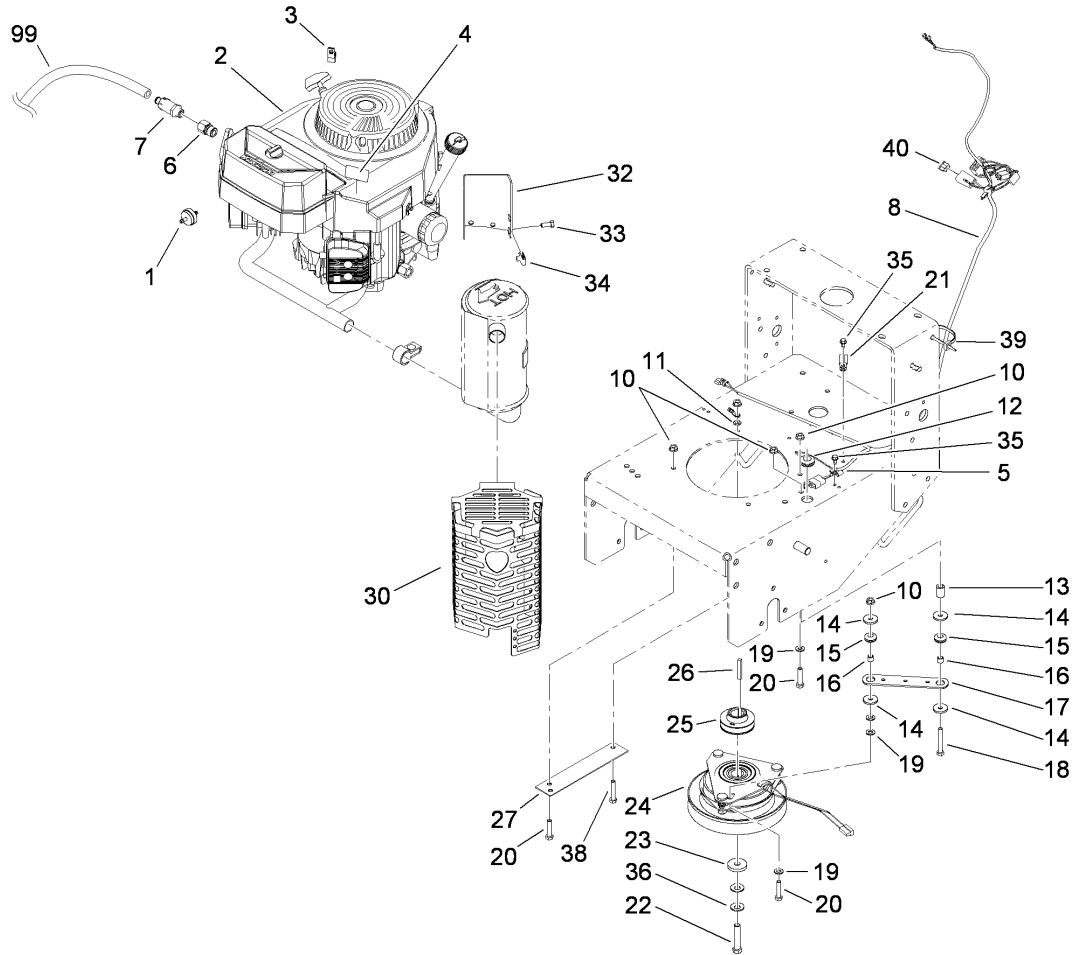
Part descriptions in this catalog may include the following abbreviations.

AR. as required	HWHTF. hex washer head thread forming
ASM. assembly	HYD. hydraulic
BBC. blade brake clutch	LH. left hand
CARR. carriage	NI. nylon insert
CCW. counter clock wise	NPTF. national pipe thread fine
CW. clockwise	PFH. phillips flat head
DEG. degrees	PPH. phillips pan head
ECM. electronic control module	PPHTF. phillips pan head thread forming
EXT. external	PRH. phillips round head
FH. flat head	PTH. phillips truss head
GA. gauge	PTO. power-take-off
HD. heavy-duty	RH. right hand
HF. hex flange	ROPS. roll-over protection system
HH. hex head	SFH. slotted fillister head
HHF. hex head flange	SHH. slotted hex head
HHFTF. hex head flange thread forming	SHWH. slotted hex washer head
HJ. hex jam	SPH. slotted pan head
HLH. hex lag head	SQH. square head
HOC. height-of-cut	SRH. slotted round head
HSBH. hex socket button head	STD. standard
HSFH. hex socket flat head	TAP. self tapping
HSH. hex socket head	TTH. torx truss head
HWH. hex washer head	

Footnotes

❶ Not serviced separately

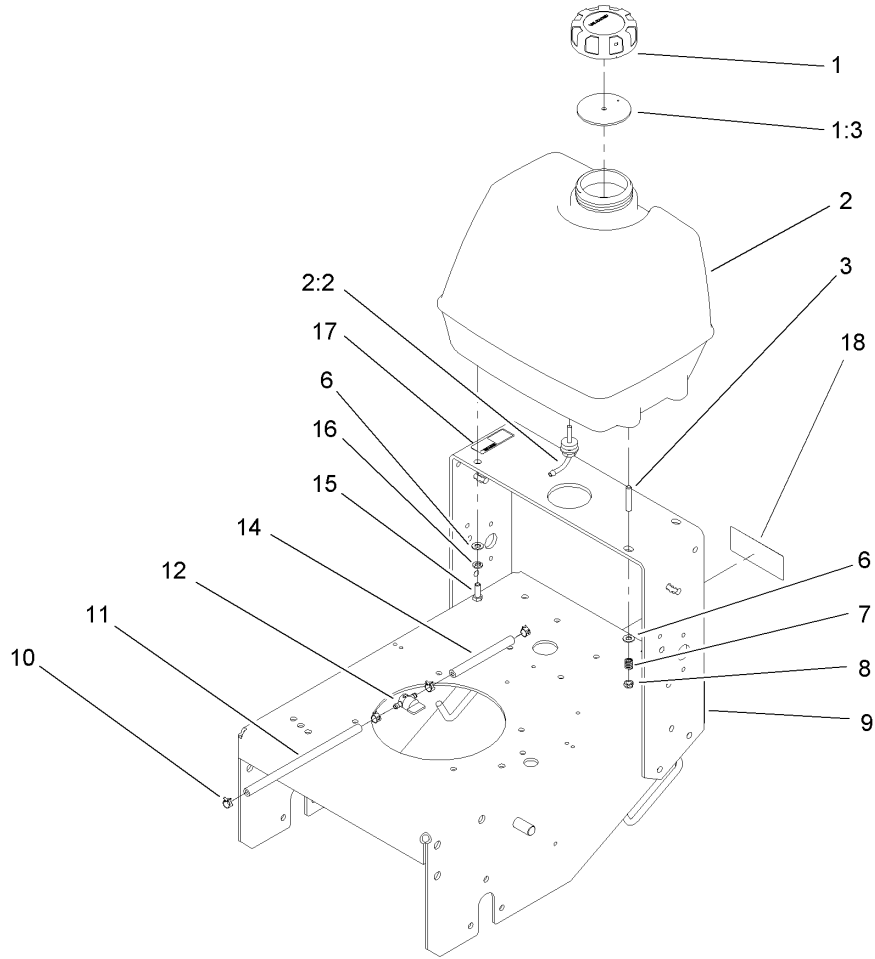
❷ Obtain parts from www.kawpowerepc.com



Engine and Clutch Assembly

Ref	Part No.	Qty.	Description
1	56-6360	1	Filter-Fuel
① ② 2		1	Engine-Kawasaki, FH430V-Es28
3	2412-87	1	Clamp-Cable
4	106-0699	1	Decal-Warning
5	2412-72	1	Clip-Closed, Insulated
6	103-1966	1	Adapter
7	92-6877	1	Valve-Drain, Oil
8	104-8137	1	Harness-Wire
10	32128-20	6	Nut-HF
11	3255-8	1	Washer-Lock
12	112-7069	1	Grommet
13	104-6373	1	Tube-Retainer
14	1-613235	4	Washer
15	1-633630	2	Grommet-Brake
16	1-633545	2	Spacer
17	1-633543-03	1	Strap-Clutch, Brake
18	322-11	1	Screw-HH
19	3256-23	5	Washer-Flat
20	322-7	4	Screw-HH
21	2412-134	1	Clamp-R
22	3212-9	1	Screw-HH
23	107-4136	1	Washer
24	105-2635	1	Clutch / Brake
25	107-4112	1	Pulley-Drive

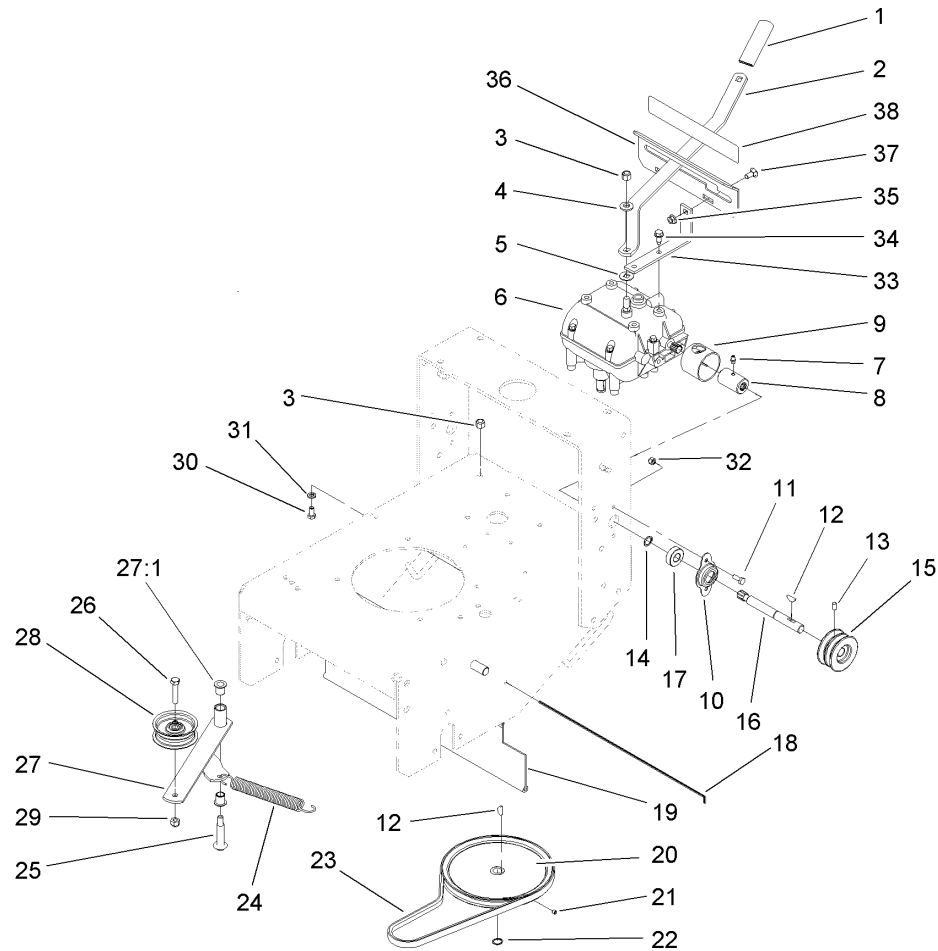
Ref	Part No.	Qty.	Description
26	608006	1	Key-Square
27	94-5847-01	1	Cover-Pulley
30	115-4150-03	1	Muffler Shield ASM
32	115-4154-03	1	Bracket-Muffler
33	322-3	4	Screw-HH
34	94-2413	4	U-Nut
35	12-3270	2	Screw
36	1-603610	2	Washer-Spring
38	322-9	1	Screw-HH
39	3290-378	1	Tie-Cable
40	114241	1	Fuse-7.5 Amp
99	103-1964	1	Hose-Drain, Oil



Fuel System Assembly

Ref	Part No.	Qty.	Description
1	88-3980	1	Gas Cap ASM
1:3	88-4010	1	Gasket-Cap, Gas
2	106-0730	1	Fuel Tank ASM
2:2	103-2605	1	Fitting-Fuel, Bulkhead
3	104-8121	2	Stud-Threaded
6	3256-23	4	Washer-Flat
7	1-633349	2	Spring-Tank, Fuel
8	3296-47	2	Nut-Lock, NI
9	110-4985-01	1	Gear Frame ASM
10	2412-98	4	Clamp
11	110-4894	1	Hose-Fuel
12	1-603770	1	Valve-Fuel
14	107-0588	1	Hose-Fuel
15	322-4	2	Screw-HH
16	3253-4	2	Washer-Lock
17	95-2814	1	Decal-Shut Off, Fuel
18	98-0776	1	Decal-Caution

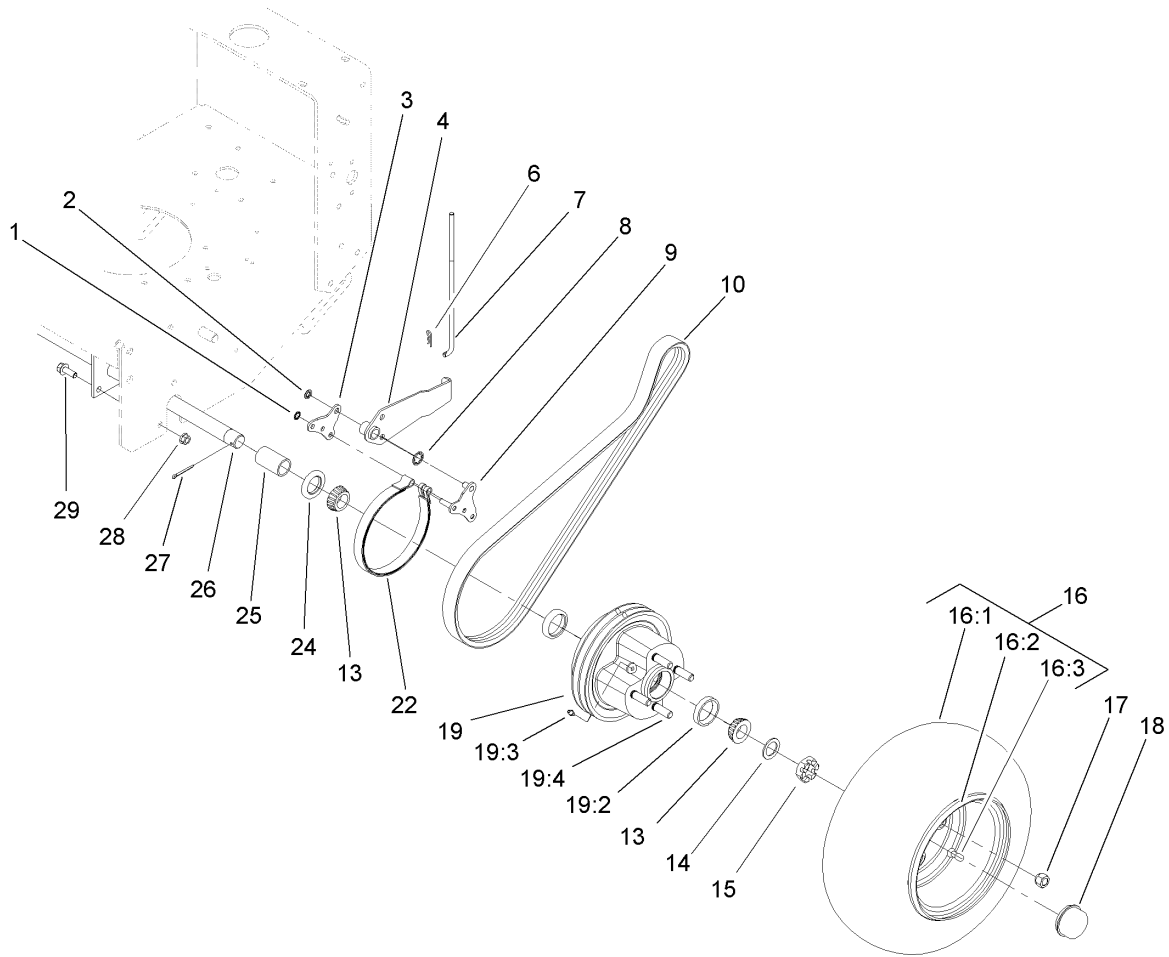
--	--	--	--



Transmission Drive Assembly

Ref	Part No.	Qty.	Description
1	47-1970	1	Grip
2	98-3274-03	1	Lever-Shift
3	3296-6	2	Nut-Lock
4	98-5975	1	Washer-Belleville
5	1-323379	1	Washer
6	1-323500	1	Transmission
7	302-5	2	Fitting-Grease
8	1-323680	2	Coupler
9	51-4220	2	Guard-Coupler
10	1-323254	2	Flange-Output
11	321-4	4	Screw-HH
12	3257-5	3	Key-Woodruff
13	3245-9	2	Screw-Set
14	32151-62	2	Ring-Retaining
15	105-2698	2	Pulley-Transmission
16	104-1102	2	Shaft-Output
17	1-323252	2	Bearing-Shaft
18	95-1529	1	Rod-Shield
19	95-1526	1	Shield-Trailing
20	105-5646	1	Pulley-Driven
21	3245-1	1	Screw-Set, HSH
22	32120-64	1	Ring-Snap, External
23	105-5668	1	V-Belt
24	80-6610	1	Spring-Extension

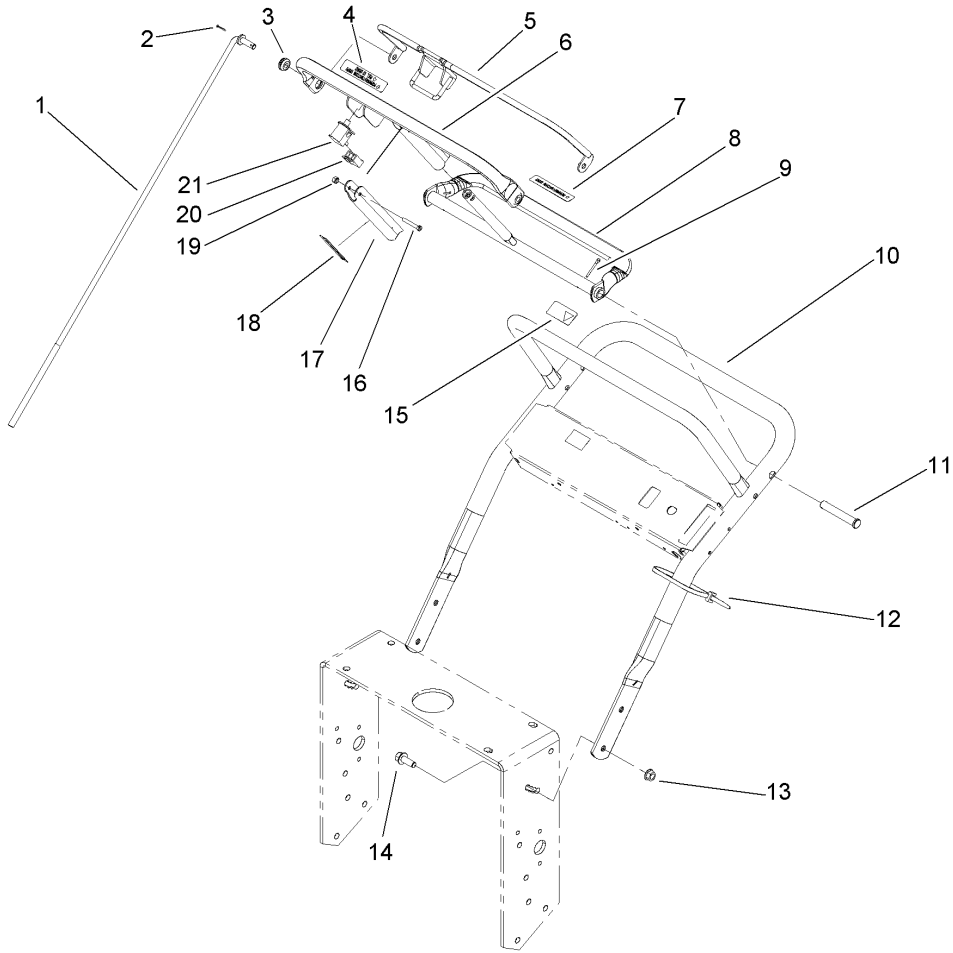
Ref	Part No.	Qty.	Description
25	27-6230	1	Bolt-Wheel
26	323-9	1	Screw-HH
27	16-7509	1	Lever-Idler
27:1	256-155	2	Bushing-Flange
28	62-4540	1	Pulley
29	3296-39	1	Nut-Lock, NI
30	322-2	4	Screw-HH
31	3253-4	4	Washer-Lock
32	3296-42	4	Nut-Lock, NI
33	1-323389-03	2	Bracket-Plate, Shift
34	9264964	4	Screw-HWH, Thread Cut
35	32128-20	2	Nut-HF
36	1-323387-03	1	Plate-Shift
37	3230-1	2	Bolt-CARR
38	98-3256	1	Decal-Speed, Ground



Wheel Drive and Brake Assembly

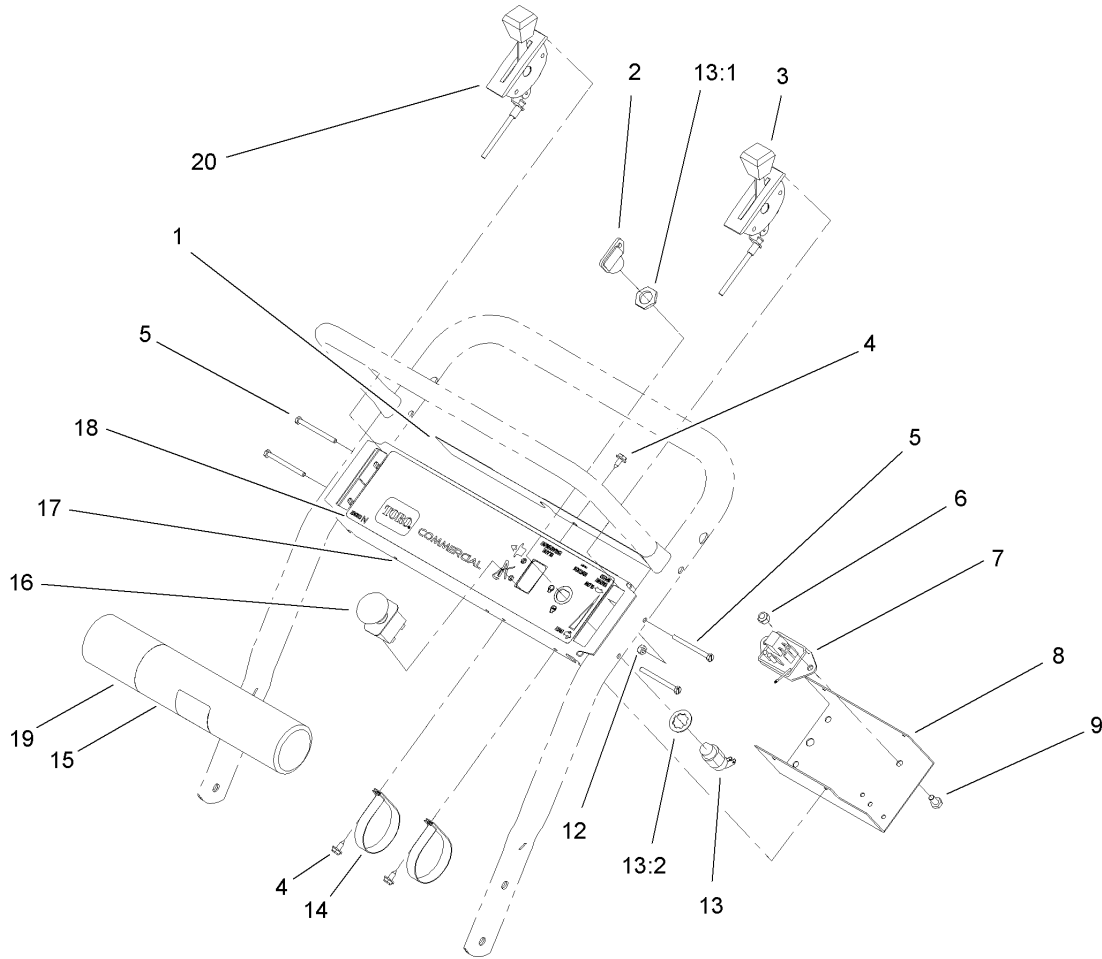
Ref	Part No.	Qty.	Description
1	32151-72	4	Ring-Retaining
2	32151-56	2	Ring-Retaining, External
3	106-8792	2	Plate-Link, Brake
4	110-5010-01	2	Brake Arm ASM
6	3290-307	2	Pin-Hair
7	108-2730	2	Rod-Brake
8	32151-40	2	Ring-Retaining
9	106-8773	2	Brake Link ASM
10	110-5004	2	Belt-V, Banded
13	1-543509	4	Bearing-Roller, Tapered
14	1-523157	2	Washer-Spacer
15	1-809082	2	Nut-SHH
16	106-0892	2	Wheel And Tire ASM
16:1	104-6322	1	Tire
16:2	106-0893	1	Wheel
16:3	232-27	1	Stem-Valve
17	242-50	8	Nut-Lug
18	241-119	2	Cap-Dust
19	107-4090	2	Wheel Hub ASM
19:2	1-543508	2	Cup-Bearing
19:3	302-5	1	Fitting-Grease
19:4	10-6830	4	Stud-Type, Drive
22	1-323262	2	Band-Brake
24	1-543511	2	Seal-Grease

Ref	Part No.	Qty.	Description
25	110-5006	2	Spacer-Wheel
26	110-4983-01	1	Axle ASM
27	1-806800	2	Pin-Cotter
28	32128-21	6	Nut-HF
29	3234-11	6	Screw-HHF



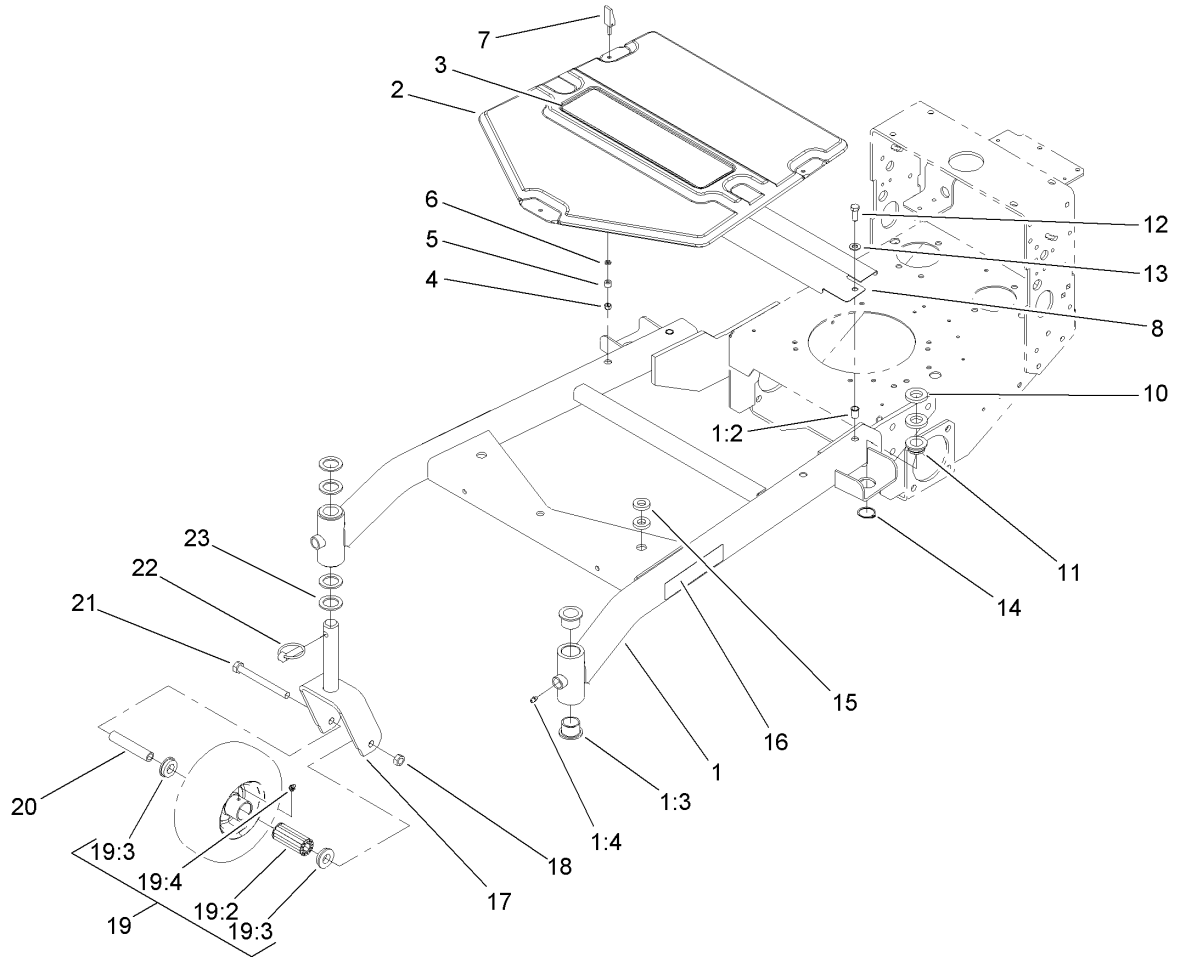
Upper Handle Assembly

Ref	Part No.	Qty.	Description				
1	105-4677	2	Rod-Control				
2	3272-4	2	Pin-Cotter				
3	237-141	2	Grommet-Rubber				
4	82-2290	1	Decal				
5	82-7680-03	1	Bail ASM				
6	82-7690-03	1	Bar-Control				
7	82-2280	1	Decal				
8	106-5477-03	1	Control Pivot ASM				
9	3272-11	2	Pin-Cotter				
10	105-3158-03	1	Upper Handle ASM				
11	283-55	2	Pin-Clevis				
12	3290-378	2	Tie-Cable				
13	32128-21	4	Nut-HF				
14	3234-11	4	Screw-HHF				
15	98-4387	1	Decal-Protection, Ear				
16	32105-1	1	Screw-SHH				
17	51-4850-03	1	Lever-Brake, Parking				
18	52-2010	1	Decal-Lever, Parking				
19	3296-2	1	Nut-Lock, NI				
20	218-595	1	Connector-Body				
21	82-2190	1	Switch-Bail				



Control Panel Assembly

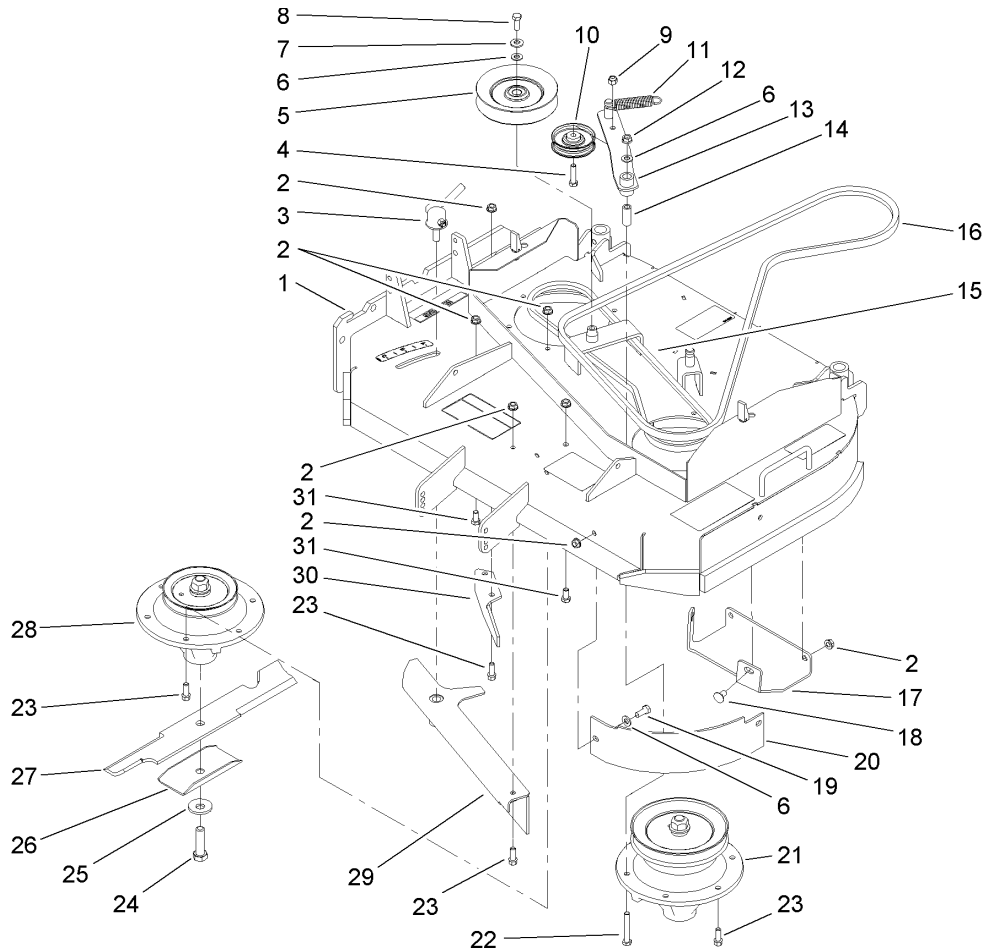
Ref	Part No.	Qty.	Description
1	105-0884	1	Decal-Danger
2	63-8360	1	Key-Ignition
3	110-4994	1	Cable-Throttle
4	32104-76	4	Screw
5	32105-14	4	Screw-SHH
6	3296-42	1	Nut-Lock, NI
7	104-8141	1	Module-Delay
8	93-1187-03	1	Panel-Bottom
9	321-2	1	Screw-HH
12	3296-2	4	Nut-Lock, NI
13	29-5560	1	Switch-On / Off
13:1	218-461	1	Nut-HH
13:2	3254-5	1	Washer-Tooth
14	2412-120	2	R-Clamp
15	104-7050	1	Housing-Manual
16	104-8140	1	Switch-PTO
17	110-4982-03	1	Panel-Control
18	110-4971	1	Decal-Control Panel
19	104-7048	1	Cap-Housing
20	110-4995	1	Cable-Choke



Carrier Frame Assembly

Ref	Part No.	Qty.	Description
1	110-6960	1	Carrier Frame ASM
1:2	32148-9	2	Insert-Nut
1:3	94-1291	4	Bushing
1:4	302-5	2	Fitting-Grease
2	110-6970	1	Cover-Frame, Carrier
3	112-9710	1	Decal
4	1-804254	3	Nut
5	106-6778	3	Bushing-Latch, Swell
6	99-3058	3	Washer
7	106-6777	3	Handle-Latch, Swell
8	110-6971-01	1	Shield-Belt
10	104-1105	4	Spacer-Support, Deck
11	1-513336	2	Bushing-Deck
12	323-6	2	Screw-HH
13	3256-24	2	Washer-Flat
14	32120-33	2	Ring-Retaining
15	1-323539	4	Spacer
16	106-0635	2	Decal-HOC
17	105-3159-01	2	Castor Fork ASM
18	32153-5	2	Nut-Lock, Side
19	110-5024	2	Wheel And Tire ASM
19:2	112-7066	1	Bearing-Roller
19:3	1-513810	2	Bushing
19:4	302-61	1	Zerk

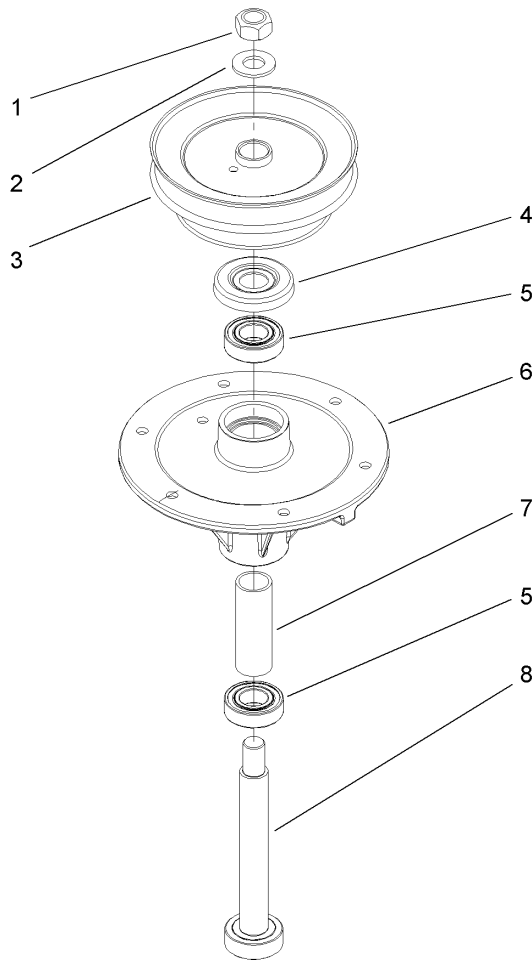
Ref	Part No.	Qty.	Description
20	100-6453	2	Bushing-Spanner
21	325-19	2	Screw-HH
22	283-71	2	Pin-Lynch
23	3-6781	8	Washer-Thrust



Deck Drive and Baffle Assembly

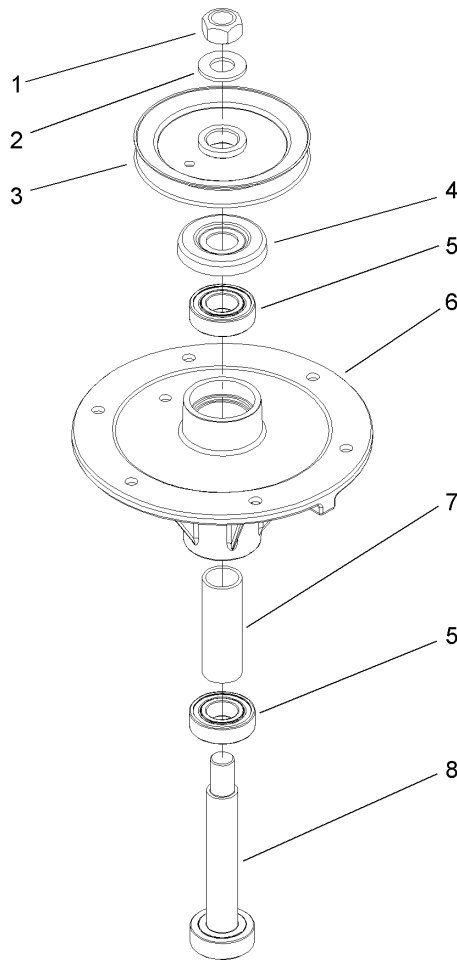
Ref	Part No.	Qty.	Description
1	112-7080	1	Deck ASM
2	3290-357	22	Nut-HHF, Whiz
3	107-1664	1	Lever ASM
4	323-8	1	Screw-HH
5	1-633166	1	Pulley-Idler
6	3256-24	4	Washer-Flat
7	98-5975	1	Washer-Belleville
8	323-6	1	Screw-HH
9	3296-39	1	Nut-Lock, NI
10	51-3660	1	Pulley-Idler
11	105-2673	1	Spring-Extension
12	32128-21	1	Nut-HF
13	105-0889	1	Idler Arm ASM
14	51-3641	1	Sleeve-Pivot, Idler
15	110-6953	1	Belt-V
16	110-6954	1	Belt-V
17	110-2037-01	1	Plate-Skid
18	3231-1	4	Screw-CARR
19	323-5	2	Screw-HH
20	110-6903-03	1	Baffle-Front, LH
21	110-0730	1	Spindle ASM
22	323-12	1	Screw-HH
23	92-1624	14	Screw-HWH
24	51-4060	2	Screw-Blade

Ref	Part No.	Qty.	Description
25	103-0865	2	Washer-Blade Bolt, Heavy
26	108-2727	2	Stiffener-Blade
27	105-7781-03	2	Blade-18 Inch (Hi Flow)
28	110-0728	1	Spindle ASM
29	110-6955-03	1	Adjust Baffle ASM
30	110-0754-01	1	Baffle-Discharge
31	323-4	2	Screw-HH



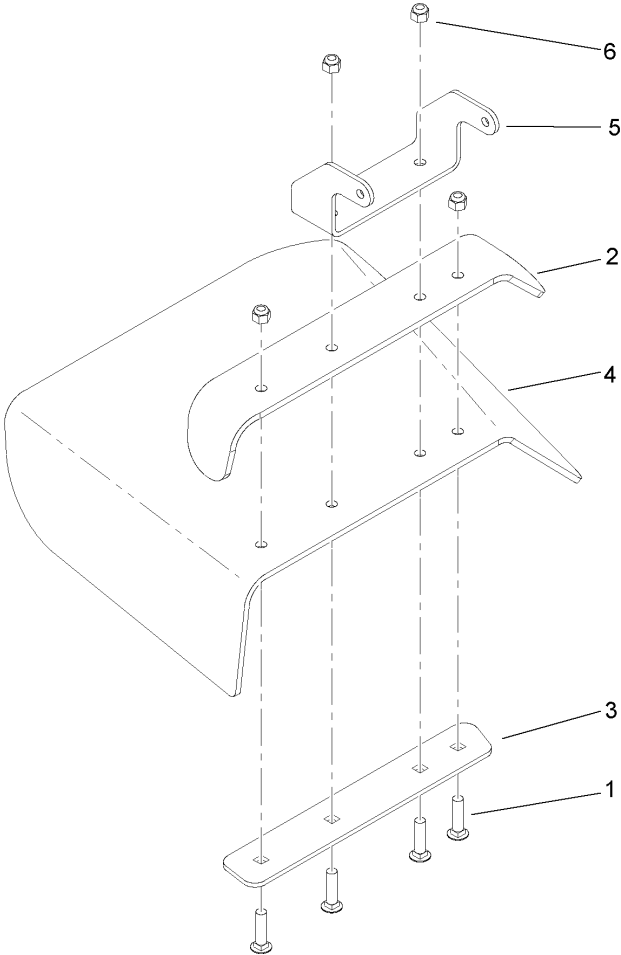
Spindle Assembly No. 110-0730

Ref	Part No.	Qty.	Description				
1	3219-7	1	Nut-Hex				
2	7-4150	1	Washer				
3	108-6627	1	Pulley And Hub ASM				
4	106-0873	1	Shield-Bearing				
5	104-6325	2	Bearing-Ball				
6	108-6696	1	Housing-Spindle				
7	110-0727	1	Spacer-Bearing				
8	110-0725	1	Shaft-Spindle				



Spindle Assembly No. 110-0728

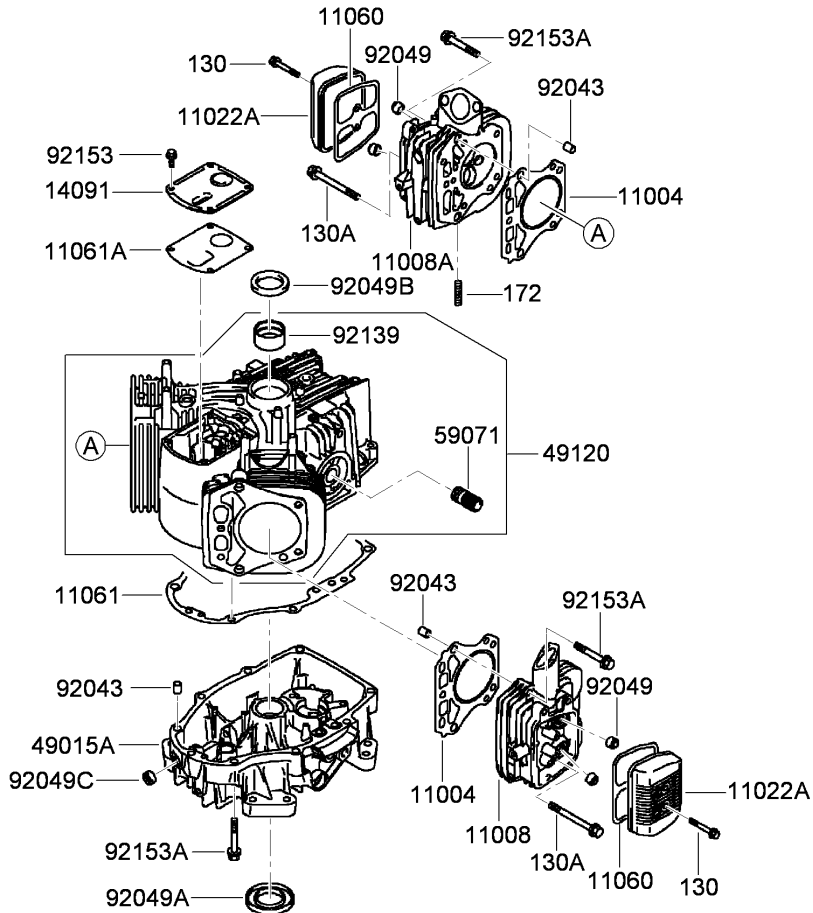
Ref	Part No.	Qty.	Description				
1	3219-7	1	Nut-Hex				
2	7-4150	1	Washer				
3	104-1181	1	Pulley ASM				
4	106-0873	1	Shield-Bearing				
5	104-6325	2	Bearing-Ball				
6	108-6696	1	Housing-Spindle				
7	110-0727	1	Spacer-Bearing				
8	110-0726	1	Shaft-Spindle				



Deflector Assembly No. 110-0790

Ref	Part No.	Qty.	Description
1	3231-4	4	Screw-CARR
2	110-0792-01	1	Deflector
3	110-0793-03	1	Strap-Discharge
4	110-0791	1	Deflector-Rubber
5	107-4164-01	1	Bracket-Mounting, Deflector
6	3296-39	4	Nut-Lock, NI

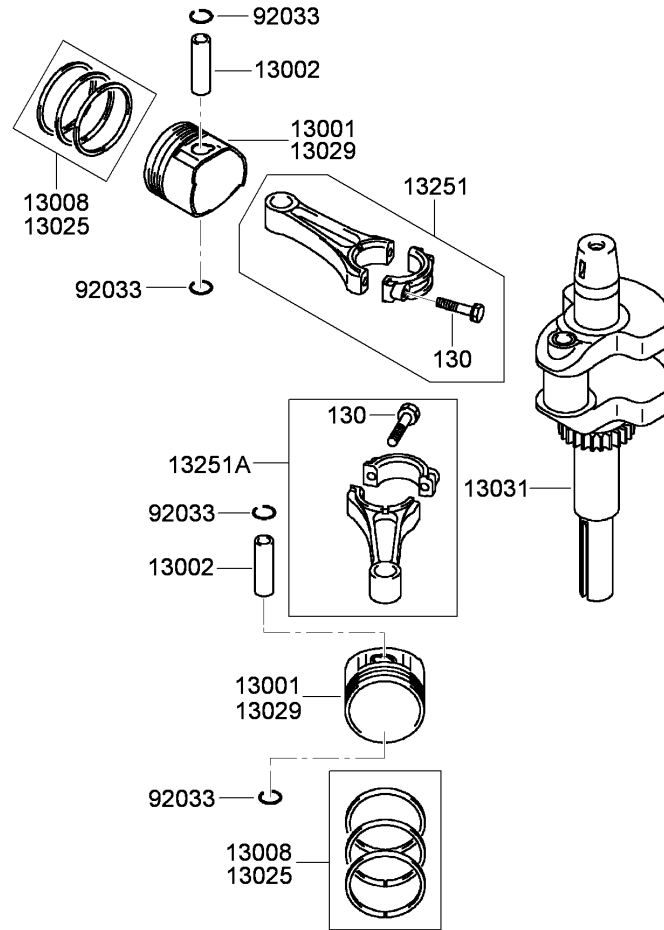
--	--	--	--



Cylinder and Crankcase Assembly Kawasaki FH430V-ES28

Ref	Part No.	Qty.	Description
② 130	130AA0640	4	Bolt-Flanged (6X40)
② 130A	130CA0875	2	Bolt-Flanged (8X75)
② 172	172BA0818	4	Bolt-Stud (8X18)
② 11004	11004-7018	2	Gasket-Head
② 11008	11008-7021	1	Head-Cylinder, No. 2
② 11008A	11008-7022	1	Head-Cylinder, No. 1
② 11022A	11022-7018	2	Case-Rocker
② 11060	11060-7001	2	Gasket-Case, Rocker
② 11061	11061-7007	1	Gasket-Cover, Crankcase
② 11061A	11061-7008	1	Gasket-Breather
② 14091	14091-7007	1	Cover
② 49015A	49015-7080	1	Cover-Crankcase
② 49120	49120-7015	1	Crankcase
② 59071	59071-2079	1	Joint
② 92043	92043-7001	6	Pin
② 92049	92049-7001	4	Seal-Oil, R V C2 (6X11X10.2)
② 92049A	92049-7015	1	Seal-Oil, S D (35X62X8 L HSH)
② 92049B	92049-7016	1	Seal-Oil, S D (35X48X8 R HSH)
② 92049C	92049-7019	1	Seal-Oil, S O (8X14X5 HSH)
② 92139	92139-7008	1	Bushing
② 92153	92153-7043	4	Bolt (6X12)
② 92153A	92153-7054	17	Bolt (8X50)

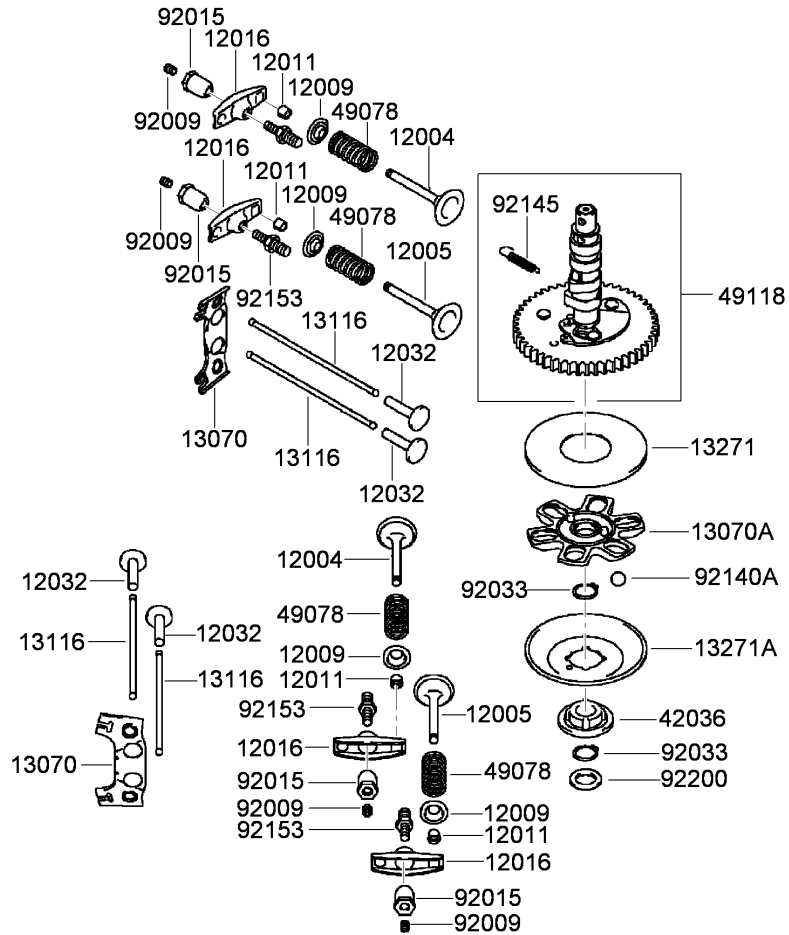
--	--	--	--



Piston and Crankshaft Assembly Kawasaki FH430V-ES28

Ref	Part No.	Qty.	Description
② 130	130BA0630	4	Bolt-Flanged (6X30)
② 13001	13001-7022	2	Piston-Engine
② 13002	13002-7001	2	Pin-Piston
② 13008	13008-7001	2	Piston Ring Set
② 13025	13025-7003	1	Piston Ring Set (L 0.50)
② 13029	13029-7005	1	Piston-Engine (L 0.50)
② 13031	13031-7033	1	Crankshaft
② 13251	13251-7007	2	Connecting Rod ASM
② 13251A	13251-7008	2	Connecting Rod ASM (0.50)
② 92033	92033-7002	4	Ring-Snap

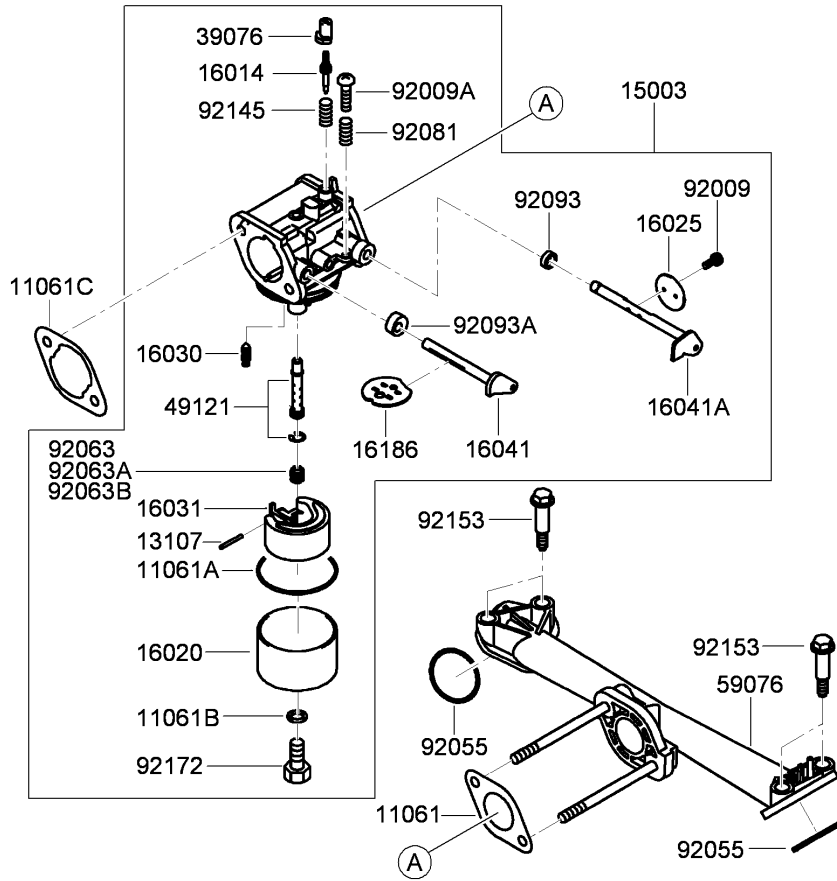
--	--	--	--



Valve and Camshaft Assembly Kawasaki FH430V-ES28

Ref	Part No.	Qty.	Description
②	12004	2	Valve-Intake
②	12005	2	Valve-Exhaust
④	12009	4	Retainer-Spring, Valve
⑧	12011	8	Collet
④	12016	4	Arm-Rocker
④	12032	4	Tappet
②	13070	2	Guide
①	13070A	1	Guide
④	13116	4	Rod-Push
①	13271	1	Plate
①	13271A	1	Plate-Governor
①	42036	1	Sleeve
④	49078	4	Spring-Valve, Engine
①	49118	1	Camshaft
④	92009	4	Screw
④	92015	4	Nut
②	92033	2	Ring-Snap
⑥	92140A	6	Ball
①	92145	1	Spring
④	92153	4	Bolt
①	92200	1	Washer

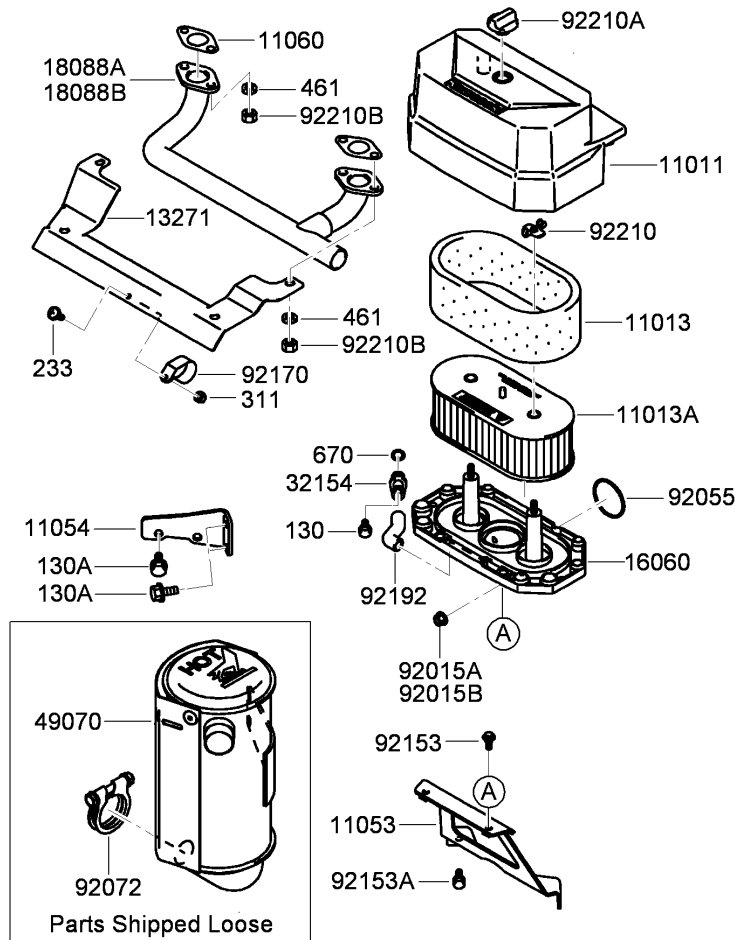
--	--	--	--



Carburetor Assembly Kawasaki FH430V-ES28

Ref	Part No.	Qty.	Description
②11061	11061-7004	1	Gasket-Insulator
②11061A	11061-7009	1	Gasket-Chamber
②11061B	11061-7010	1	Gasket-Screw
②11061C	11061-7018	1	Gasket-Cleaner, Air
②13107	13107-7018	1	Shaft
②15003	15003-7061	1	Carburetor ASM
②16014	16014-7002	1	Screw-Pilot, Air
②16020	16020-7003	1	Chamber-Float
②16025	16025-7006	1	Valve-Throttle
②16030	16030-7003	1	Valve-Float
②16031	16031-7002	1	Float
②16041	16041-7016	1	Shaft-Choke, Carburetor
②16041A	16041-7018	1	Shaft-Throttle, Carburetor
②16186	16186-7002	1	Choke Valve ASM
②39076	39076-7001	1	Limiter
②49121	49121-7001	1	Nozzle-Main
②59076	59076-7005	1	Manifold-Intake
②92009	92009-2083	2	Screw
②92009A	92009-2349	1	Screw
②92055	92055-7007	2	O-Ring (I D 31)
②92063	92063-7026	1	Jet-Main, No. 88
②92063A	92063-7028	1	Jet-Main, No. 85 (3280 Ft)
②92063B	92063-7029	1	Jet-Main, No.82 (6560 Ft)
②92081	92081-2234	1	Spring

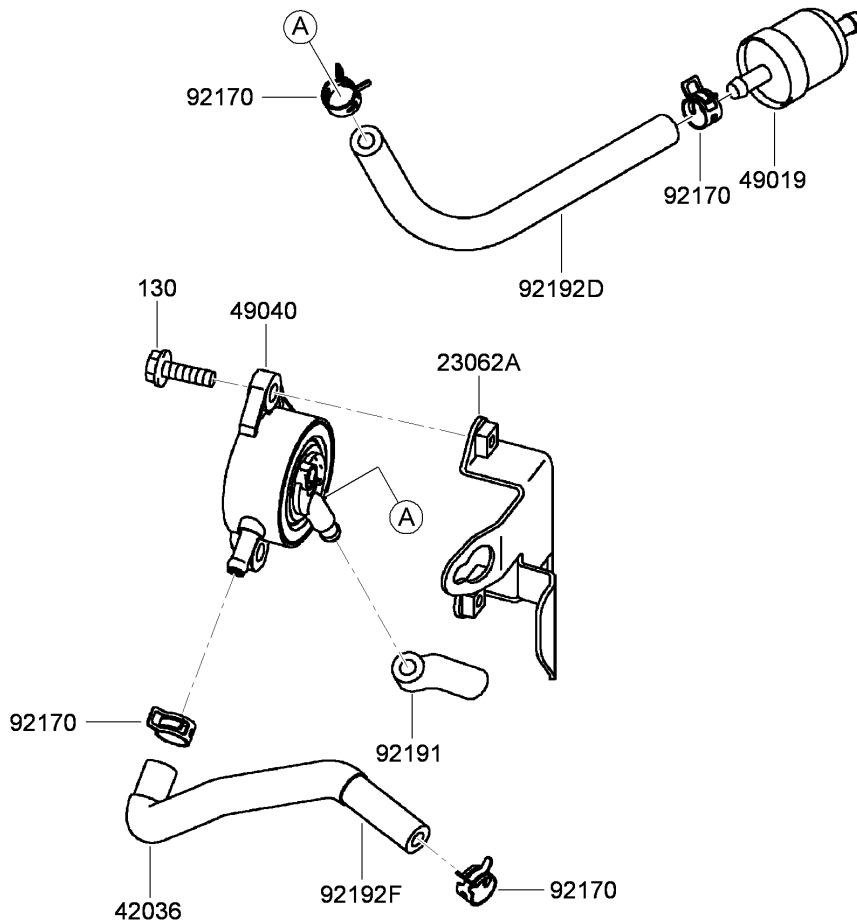
Ref	Part No.	Qty.	Description
②92093	92093-2100	1	Seal
②92093A	92093-7003	1	Seal
②92145	92145-7015	1	Spring
②92153	92153-7009	4	Bolt
②92172	92172-7002	1	Screw



Air Filter and Muffler Assembly Kawasaki FH430V-ES28

Ref	Part No.	Qty.	Description
②130	130AA0610	1	Bolt-Flanged (6X10)
②130A	130AA0816	3	Bolt-Flanged (8X16)
②233	233AA0416	1	Screw-Pan, Wp ++-(4X16)
②311	311AA0400	1	Nut-Hex (4Mm)
②461	461DA0800	4	Washer-Spring (8Mm)
②670	670B2010	1	O-Ring (10Mm)
②11011	11011-7045	1	Case-Filter, Air
②11013	11013-7025	1	Element-Filter, Air
②11013A	11013-7031	1	Element-Filter, Air
②11053	11053-7022	1	Bracket
②11054	11054-7002-9H	1	Bracket
②11060	11060-7021	2	Gasket-Muffler
②13271	13271-7022	1	Plate
②16060	16060-7016	1	Pipe-Intake
②18088A	18088-7001	1	Pipe-Exhaust (Part Can Be Used As Substitute On The Product And Is Supplied Until Stock Is Exhausted)
②18088B	18088-7008	1	Pipe-Exhaust
②32154	32154-7006	1	Pipe
②49070	49070-7021	1	Muffler
②92015A	92015-1193	1	Nut (Part Can Be Used As Substitute On The Product And Is Supplied Until Stock Is Exhausted)

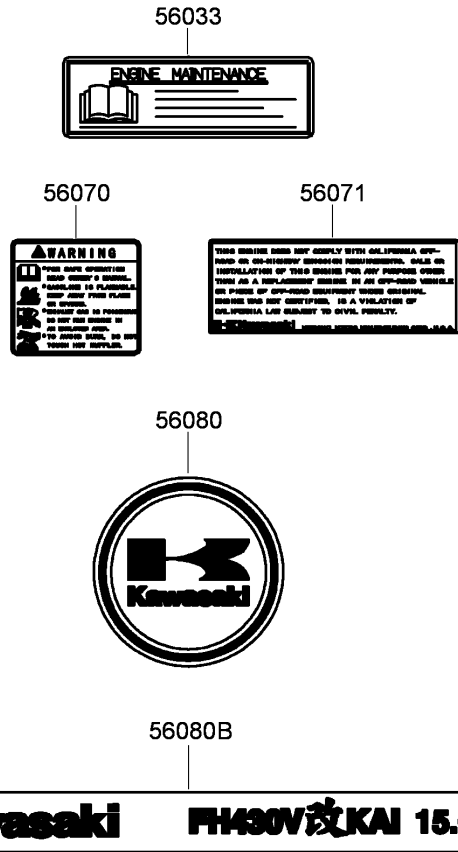
Ref	Part No.	Qty.	Description
②92015B	92015-1367	2	Nut
②92055	92055-7015	1	O-Ring
②92072	92072-7012	1	Band
②92153	92153-7038	2	Bolt (6X10)
②92153A	92153-7043	2	Bolt (6X12)
②92170	92170-7002	1	Clamp
②92192	92192-7010	1	Tube
②92210	92210-7004	2	Nut (M6)
②92210A	92210-7019	1	Nut
②92210B	92210-7027	4	Nut (M8)



Fuel Tank and Valve Assembly Kawasaki FH430V-ES28

Ref	Part No.	Qty.	Description
② 130	130AA0620	2	Bolt-Flanged (6X20)
② 23062A	23062-7019-9H	1	Bracket
② 42036	42036-7012	1	Sleeve
② 49019	49019-7001	1	Filter-Fuel
② 49040	49040-7001	1	Pump-Fuel
② 92170	92170-2009	4	Clamp
② 92191	92191-7002	1	Tube
② 92192D	92192-7135	1	Tube (6.35X12.7X160)
② 92192F	92192-7136	1	Tube (6.35X12.7X180)

--	--	--	--



Label Assembly Kawasaki FH430V-ES28

Ref	Part No.	Qty.	Description
②56033	56033-7001	1	Label-Manual
②56070	56070-7001	1	Label-Warning
②56071	56071-7002	1	Label-Warning
②56080	56080-2077	1	Label-Brand
②56080B	56080-7057	1	Label-Brand

Attachments and Accessories

For 30094 - Commercial Walk-Behind Mower, Floating Deck T-Bar Gear with 36in TURBO FORCE Cutting Unit

Product Name	Model/Part
Blade-Recycler, 18 Inch	105-7779-03
Blade-Med Flow, 18 Inch	105-7794-03
Blade-Low Flow, 18 Inch	105-7795-03
Blade-Atomic, 18 Inch	105-7796-03
Blade-Hi-Flow, 18 Inch (6 Pack)	108-1117
Blade-Atomic, 18 Inch (6 Pack)	108-1118
Blade-Lo-Flow, 18 Inch (6 Pack)	110-0406
Blade-Recycler, 18 Inch (6 Pack)	110-0408
Blade-Med-Flow, 18 Inch (6 Pack)	110-0409
36 Inch Bagger Enhancement Kit	110-2026
36 Inch Recycler Kit	110-2080
Weight-Cast	112-7059-01
Weight Kit	112-9971
Operator-Controlled Discharge Chute Kit	115-4190
Soft Bag (3 Bushel)	30104
Tru Trak Sulky	30110

