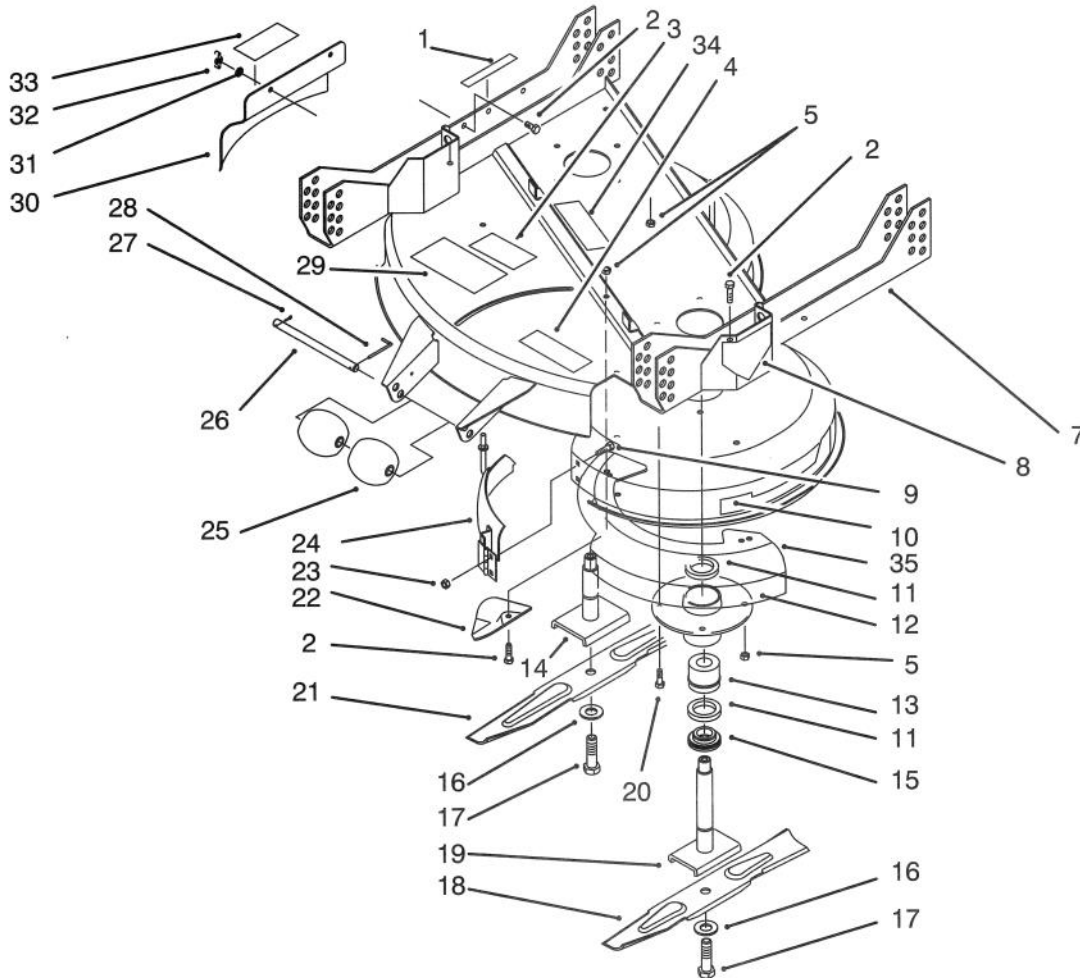




MODEL NO. 30137-490286 & UP

PARTS  
CATALOG

**PROLINE 37"**  
**RECYCLER® Rotary Cutting Unit**

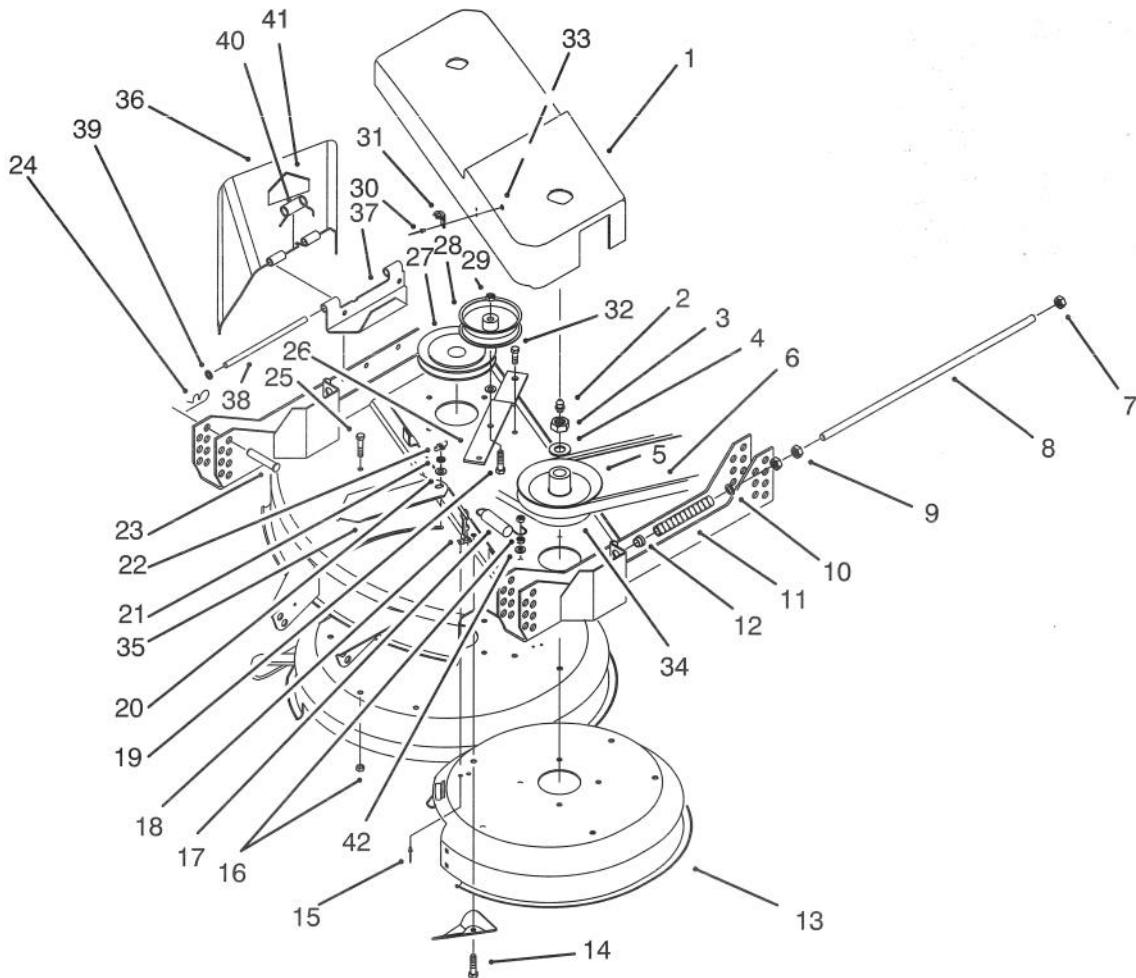


C-1078

**DECK & SPINDLE ASSEMBLY**

Ref. No.	Part No.	Description	No. Used
1	68-3650	Decal - Danger	1
2	322-5	Screw - Hex Hd. Cap	15
3	68-8340	Decal - Caution	1
4	85-7080	Decal - Discharge Door	1
5	3296-29	Nut - Lock	15
7	14-9679	Deck Support (Incl. Ref. #3, 4, 6, 8, & 29)	1
8	43-8480	Decal - Danger	1
9	3229-22	Bolt - Carriage	2
10	84-4340	Decal - 37"	1
11	253-139	Seal - Wave	4
12	82-5990	Housing - Spindle	2
13	46-8530	Bearing Assembly	2
14	84-4430	Shaft - Spindle	1
15	27-0950	Spacer - Spindle Bearing	2
16	3253-8	Washer - Lock	2
17	51-4060	Bolt - Blade	2
18	93-0107	Blade - 17"	1

Ref. No.	Part No.	Description	No. Used
19	51-3552	Shaft - Spindle	1
20	322-7	Screw - Hex Hd. Cap	1
21	93-0106	Blade - 21"	1
22	84-5760	Plate - Kicker	7
23	32149-2	Nut - Keps	2
24	92-2932	Cover - Front	1
25	29-4820	Roller	2
26	40-6400	Shaft - Roller	1
27	3272-11	Pin - Cotter	1
28	57-0690	Pin - Special Cotter	1
29	66-1340	Decal - Danger	1
30	86-9870	Cover - Discharge Chute	1
31	3255-8	Washer - Ext. Tooth	2
32	32103-27	Nut - Wing	2
33	82-7490	Decal - Danger	1
34	67-5360	Decal - Danger	1
35	92-2937	Insert - Deck	1

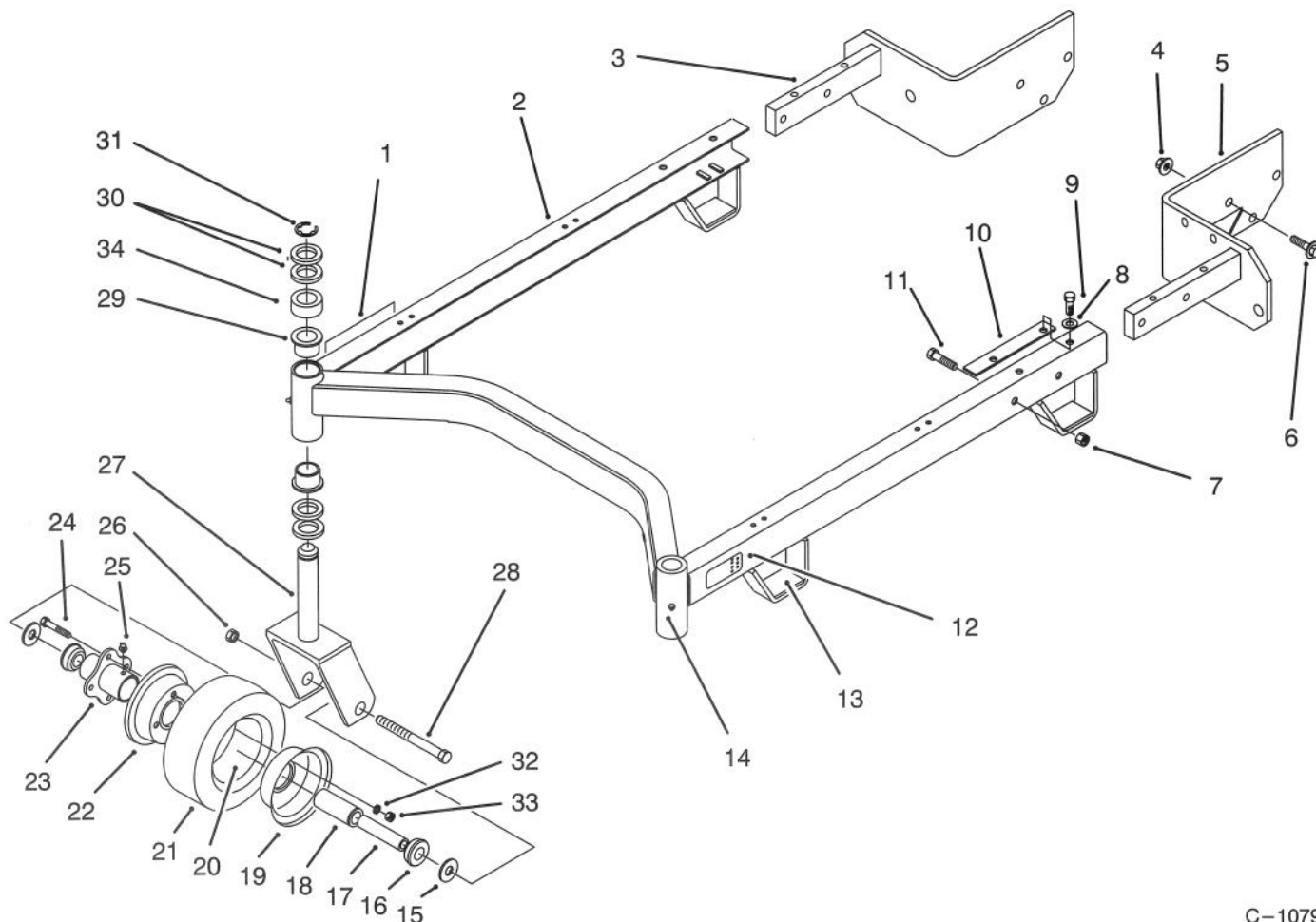


C-1073

## COVER & PULLEY ASSEMBLY

Ref. No.	Part No.	Description	No. Used
1	84-4350	Cover - Pulley	1
2	302-2	Fitting - Grease	2
3	32146-20	Nut - Lock	2
4	7-4150	Spacer - Bearing	2
5	84-4360	Pulley - Center	1
6	84-4390	V-Belt - Deck Drive	1
7	3296-45	Nut - Lock	2
8	74-0310	Shaft - Adjusting	2
9	3218-5	Nut - Jam	4
10	41-8440	Washer - Flat	2
11	74-0290	Spring - Compression	2
12	256-156	Bushing	2
13	14-9689	Deck	1
		(Incl. Ref. #1 & 10 on pg. 1)	
14	322-7	Screw - Hex Hd. Cap	1
15	3296-13	Rivet - Pop	4
16	3296-29	Nut - Lock	6
17	54-1160	Spring - Extension	1
18	117341	Latch Assembly	2
		(Incl. Ref. #31)	
19	323-9	Screw - Hex Hd. Cap	1
20	3256-24	Washer - Flat	2

Ref. No.	Part No.	Description	No. Used
21	3255-8	Washer - Ext. Tooth	1
22	32103-27	Nut - Wing	1
23	283-55	Pin - Clevis	4
24	3290-355	Cotter - Hairpin	4
25	322-5	Screw - Hex Hd. Cap	4
26	84-4330	Lever - Idler	1
27	84-4440	Pulley - Outside	1
28	36-3220	Pulley - Idler	1
29	3296-39	Nut - Hex	1
30	3290-415	Rivet - Pop	4
31	117343	Keeper - Latch	2
32	19-1471	Bolt - Shoulder	1
33	3269-10	Washer - Backup	4
34	84-4410	V-Belt - Deck	1
35	84-4420	Cover - Slot	1
36	82-7520	Deflector - Discharge	1
37	82-7530	Hinge - Deflector	1
38	82-7540	Pin - Hinge	1
39	32151-56	Ring - Retaining	2
40	40-6230	Spring - Torsion	1
41	54-9220	Decal - Danger	1
42	3256-23	Washer - Flat	3



C-1079

## CARRIER FRAME ASSEMBLY

Ref. No.	Part No.	Description	No. Used	Ref. No.	Part No.	Description	No. Used
1	74-0940	Decal - Height of Cut, R.H. - 1-4"	1	15	3256-6	Washer - Flat	4
*	85-7460	Decal - Height of Cut, R.H. - 2-5"	1	16	62-5580	Bushing	4
2	55-4631	Suspension Frame W.A.	1	17	68-8980	Spanner	2
3	86-7110	Angle Bracket W.A. - R.H.	1	18	62-5570	Bearing	2
4	32128-23	Nut - Lock	6	19	68-8930	Wheel Half - male	2
5	86-7100	Angle Bracket W.A. - L.H.	1	20	68-8950	Tube w/Valve	2
6	3234-6	Screw - Hex Washer Hd. (Gear Drive Only)	6	21	68-8960	Tire	2
*	3234-32	Screw - Hex Washer Hd. (Hydraulic Drive Only)	6	22	68-8920	Wheel Half - Female	2
7	32152-2	Nut - Lock	4	23	68-8940	Hub - Centered	2
8	3256-24	Washer - Flat	4	24	54-8890	Bolt - Wheel	8
9	3235-21	Screw - Hex Hd. Cap	4	25	302-61	Fitting - Grease	2
10	62-6980	Shim - Carrier	2	26	32153-5	Nut - Lock	2
11	323-9	Screw - Hex Hd. Cap	4	27	74-0251	Front Castor Fork W.A.	2
12	68-8360	Decal - Height of Cut, L.H. - 1-4"	1	28	325-19	Screw - Hex Hd. Cap	2
*	85-7450	Decal - Height of Cut, L.H. - 2-5"	1	29	28-9290	Bushing	4
13	74-0340	Cushion - Rubber	4	30	3-6781	Washer - Thrust	8
14	302-5	Fitting - Grease	2	31	32151-91	Ring - Retaining	2
				32	3253-4	Washer - Lock	8
				33	3217-6	Nut - Lock	8
				34	93-1167	Spacer - Castor	2
				*	13-3869	Caster Wheel Assembly (Incl Ref. #16, 18-25, 32 & 33)	2

\* Not Illustrated.

# TORO PART NUMBER INDEX

3316-757

Part No.	Description	Pg. Ref. No. No. Qty.	Part No.	Description	Pg. Ref. No. No. Qty.
117341	Latch Assembly	2 18 2	84-5760	Plate - Kicker	1 22 7
117343	Keeper - Latch	2 31 2	85-7080	Decal - Discharge Door	1 4 1
3-6781	Washer - Thrust	3 30 8	85-7450	Decal - HOC, LH, 2-5"	3 * 1
7-4150	Spacer - Bearing	2 4 2	85-7460	Decal - HOC, RH, 2-5"	3 * 1
13-3869	Caster Wheel Assembly	3 * 2	86-7100	Angle Bracket W.A. - I.H.	3 5 1
14-9679	Deck Support	1 7 1	86-7110	Angle Bracket W.A. - R.H.	3 3 1
14-9689	Deck	2 13 1	86-9870	Cover - Discharge Chute	1 30 1
19-1471	Bolt - Shoulder	2 32 1	92-2932	Cover - Front	1 24 1
27-0950	Spacer - Spindle Bearing	1 15 2	92-2937	Insert - Deck	1 35 1
28-9290	Bushing	3 29 4	93-0106	Blade - 21"	1 21 1
29-4820	Roller	1 25 2	93-0107	Blade - 17"	1 18 1
36-3220	Pulley - Idler	2 28 1	93-1167	Spacer - Castor	3 34 2
40-6230	Spring - Torsion	2 40 1	253-139	Seal - Wave	1 11 4
40-6400	Shaft - Roller	1 26 1	256-156	Bushing	2 12 2
41-8440	Washer - Flat	2 10 2	283-55	Pin - Clevis	2 23 4
43-8480	Decal - Danger	1 8 1	302-2	Fitting - Grease	2 2 2
46-8530	Bearing Assembly	1 13 2	302-5	Fitting - Grease	3 14 2
51-3552	Shaft - Spindle	1 19 1	302-61	Fitting - Grease	3 25 2
51-4060	Bolt - Blade	1 17 2	322-5	Screw - Hex Hd. Cap	1 2 15
54-1160	Spring - Extension	2 17 1	322-5	Screw - Hex Hd. Cap	2 25 4
54-8890	Bolt - Wheel	3 24 8	322-7	Screw - Hex Hd. Cap	1 20 1
54-9220	Decal - Danger	2 41 1	322-7	Screw - Hex Hd. Cap	2 14 1
55-4631	Suspension Frame W.A.	3 2 1	323-9	Screw - Hex Hd. Cap	3 11 4
57-0690	Pin - Special Cotter	1 28 1	323-9	Screw - Hex Hd. Cap	2 19 1
62-5570	Bearing	3 18 2	323-9	Screw - Hex Hd. Cap	3 28 2
62-5580	Bushing	3 16 4	325-19	Screw - Hex Hd. Cap	3 28 2
62-6980	Shim - Carrier	3 10 2	3217-6	Nut - Lock	3 33 8
66-1340	Decal - Danger	1 29 1	3218-5	Nut - Jam	2 9 4
67-5360	Decal - Danger	1 34 1	3229-22	Bolt - Carriage	1 9 2
68-3650	Decal - Danger	3 12 1	3234-6	Screw - Hex Washer Hd.	3 6 6
68-8340	Decal - Caution	1 3 1	3234-32	Screw - Hex Washer Hd.	3 * 6
68-8360	Decal - H.O.C.	3 12 1	3235-21	Screw - Hex Hd. Cap	3 9 4
68-8920	Wheel Half - Female	3 22 2	3253-4	Washer - Lock	3 32 8
68-8930	Wheel Half - Male	3 19 2	3253-8	Washer - Lock	1 16 2
68-8940	Hub - Centered	3 23 2	3255-8	Washer - Ext. Tooth	2 21 1
68-8950	Tube w/Valve	3 20 2	3255-8	Washer - Ext. Tooth	1 31 2
68-8960	Tire	3 21 2	3256-6	Washer - Flat	3 15 4
68-8980	Spanner	3 17 2	3256-23	Washer - Flat	2 42 3
74-0251	Front Castor ork W.A.	3 27 2	3256-24	Washer - Flat	3 8 4
74-0290	Spring - Compression	2 11 2	3256-24	Washer - Flat	2 20 2
74-0310	Shaft - Adjusting	2 8 2	3269-10	Washer - Backup	2 33 4
74-0340	Cushion - Rubber	3 13 4	3272-11	Pin - Cotter	1 27 1
74-0940	Decal - H.O.C.	3 1 1	3290-355	Cotter - Hairpin	2 24 4
82-5990	Housing - Spindle	1 12 2	3290-415	Rivet - Pop	2 30 4
82-7490	Decal - Danger	1 33 1	3296-13	Rivet - Pop	2 15 4
82-7520	Deflector - Discharge	2 36 1	3296-29	Nut - Lock	1 5 15
82-7530	Hinge - Deflector	2 37 1	3296-29	Nut - Lock	2 16 6
82-7540	Pin - Hinge	2 38 1	3296-39	Nut - Hex	2 29 1
84-4330	Lever - Idler	2 26 1	3296-45	Nut - Lock	2 7 2
84-4340	Decal - 37"	1 10 1	32103-27	Nut - Wing	2 22 1
84-4350	Cover - Pulley	2 1 1	32103-27	Nut - Wing	1 32 2
84-4360	Pulley - Center	2 5 1	32128-23	Nut - Lock	3 4 6
84-4390	V-Belt - Deck Drive	2 6 1	32146-20	Nut - Lock	2 3 2
84-4410	V-Belt - Deck	2 34 1	32149-2	Nut - Keps	1 23 2
84-4420	Cover - Slot	2 35 1	32151-56	Ring - Retaining	2 39 2
84-4430	Shaft - Spindle	1 14 1	32151-91	Ring - Retaining	3 31 2
84-4440	Pulley - Outside	2 27 1	32152-2	Nut - Lock	3 7 4
			32153-5	Nut - Lock	3 26 2