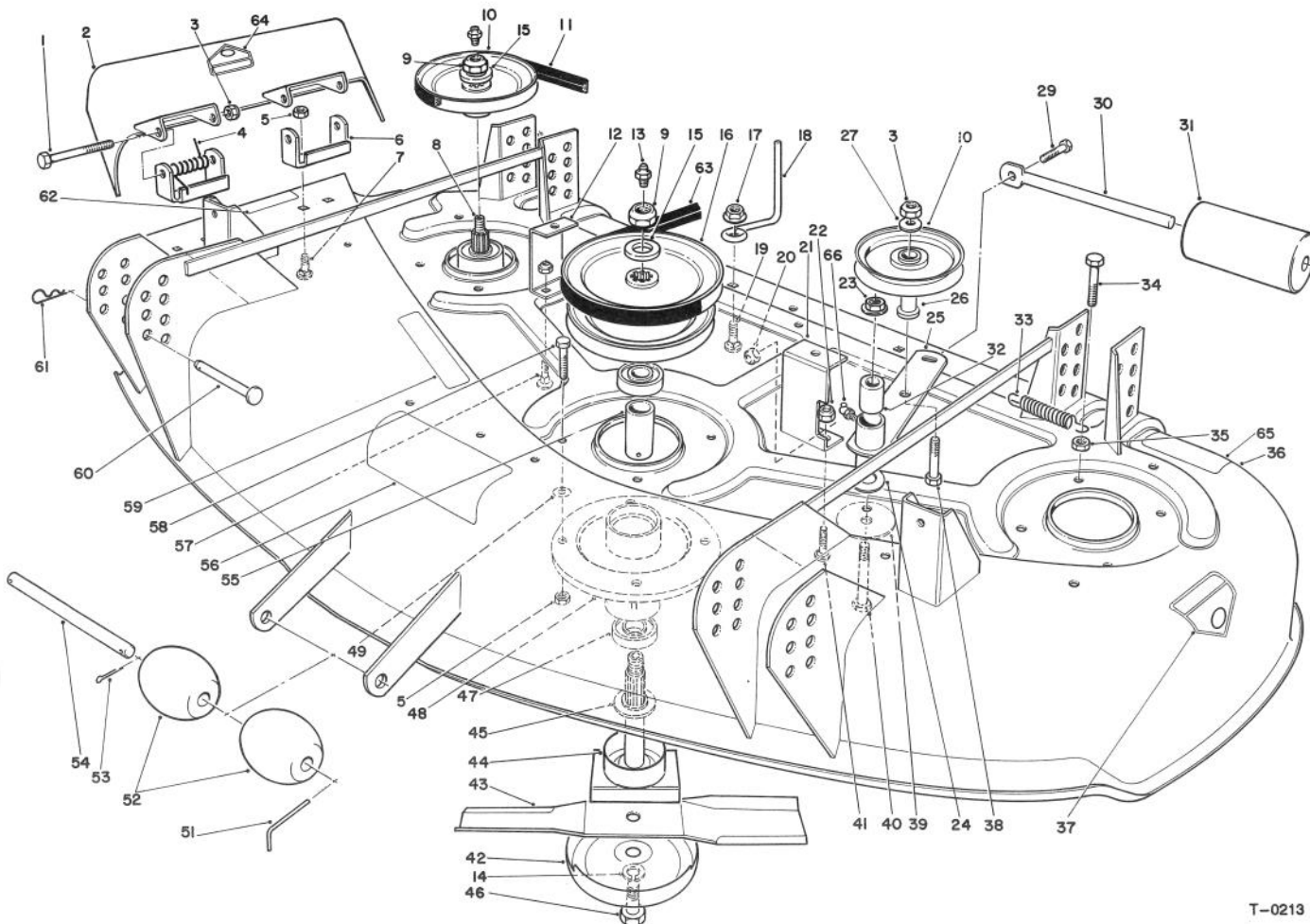




MODEL NO. 30144-492001 & UP

PARTS
CATALOG

44" SIDE DISCHARGE CUTTING UNIT
For ProLine Wide Area Mower

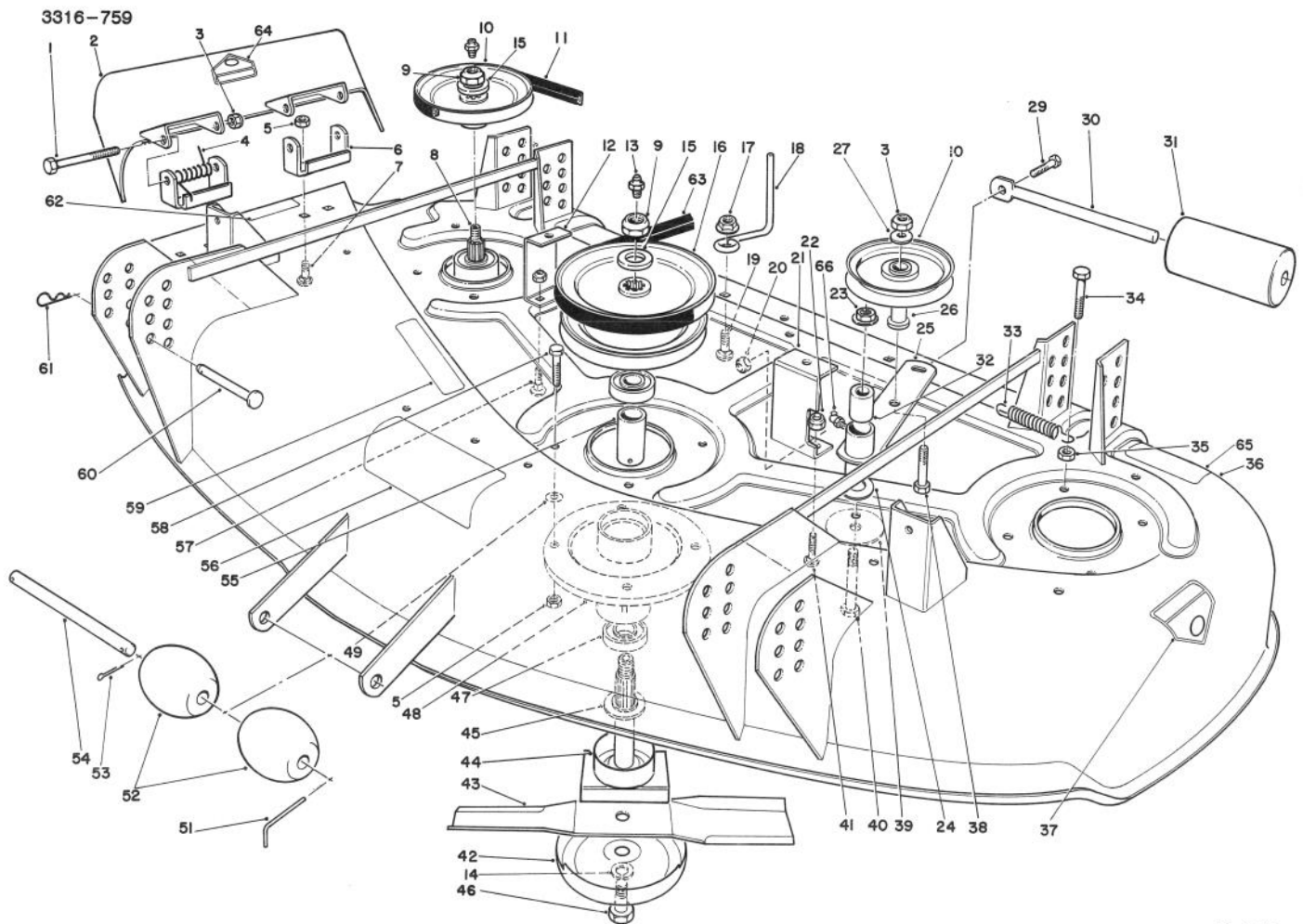


T-0213

CUTTING UNIT ASSEMBLY

Ref. No.	Part No.	Description	No. Used
1	3211-15	Screw - Hex. Hd. Cap	2
2	13-3899	Deflector - Grass	
	57-2250	(Incl. Ref. #64)	1
3	3296-5	Nut - Lock	3
4	40-6230	Spring - Torsion	2
5	32152-1	Nut - Lock	16
6	55-8320	Bracket - Pivot	1
7	3230-18	Bolt - Carriage	4
8	71-2780	Shaft - Spindle Drive	2
9	32146-20	Nut - Lock	3
10	67-7690	Pulley - Spindle	2
11	27-1160	Belt - Spindle	1
12	54-3230	Cover - Bracket R.H.	1
13	302-2	Fitting - Grease	3
14	3253-8	Washer - Lock	3

Ref. No.	Part No.	Description	No. Used
15	7-4150	Washer - Spindle	3
16	67-7650	Pulley	1
17	32128-13	Nut - Lock	2
18	52-4780	Rod - Belt	2
19	3230-2	Bolt - Carriage	2
20	3296-29	Nut - Lock	1
21	54-3240	Cover - Bracket	1
22	3296-42	Nut - Lock	4
23	32128-19	Nut - Flange Lock	1
24	52-2860	Washer	A/R
25	92-1657	Arm - Idler	1
26	65-5950	Bushing - Pulley	1
27	7-0081	Washer - Special	1
29	322-3	Screw - Hex. Hd. Cap	1
30	62-4480	Shaft - Roller	1

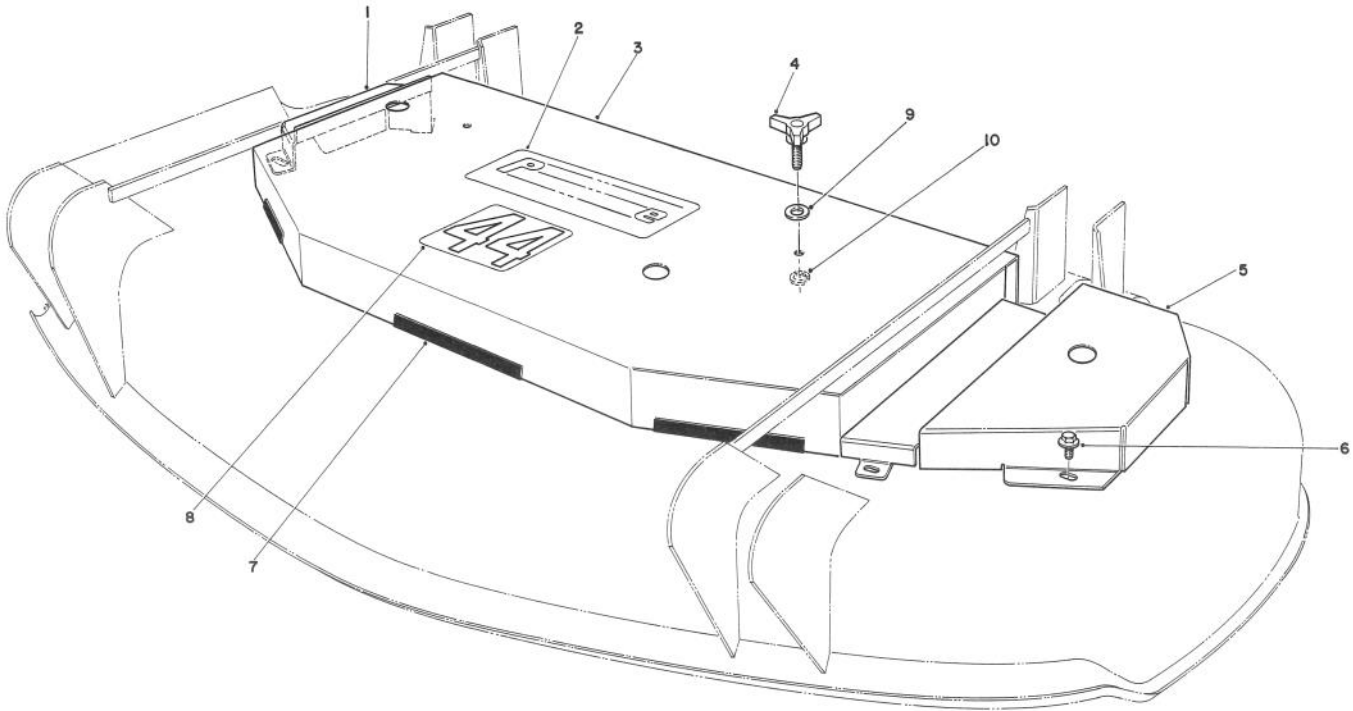


T-0213

CUTTING UNIT ASSEMBLY (Continued)

Ref. No.	Part No.	Description	No. Used	Ref. No.	Part No.	Description	No. Used
31	36-1740	Roller	1	53	3272-11	Pin - Cotter	1
32	79-2760	Spacer - Idler Pivot	1	54	40-6400	Shaft - Roller	1
33	54-2730	Spring - Extension	1	55	67-7580	Spacer - Bearing	3
34	322-6	Screw - Hex. Hd. Cap	1	56	66-1340	Decal - Danger	1
35	3218-2	Nut	1	57	3229-1	Bolt - Carriage	2
36	13-8649	Housing (Incl. Ref. #37,56,62,64, & 65)	1	58	322-4	Screw - Hex. Hd. Cap	11
37	43-8480	Decal - Danger	1	59	67-5360	Decal - Shield	1
38	3211-8	Screw - Hex. Hd. Cap	1	60	283-55	Pin - Clevis	4
39	20-9530	Washer	1	61	3290-355	Pin - Cotter	4
40	323-13	Screw - Hex. Hd. Cap	1	62	66-6380	Decal - Deflector Missing	1
41	3229-3	Bolt - Carriage	2	63	54-2750	"V"Belt - Deck Drive	1
42	67-7561	Cup - Anti Scalp	3	64	54-9220	Decal - Danger	1
43	54-0010	Blade	3	65	68-8340	Decal - Blade Torque	1
44	71-2790	Shaft - Spindle	1	66	111420	Fitting - Grease	1
45	67-7570	Spacer - Spindle	3	*	55-4940	Blade - High Sail (Optional)	3
46	51-4060	Bolt - Blade	3	*	67-7660	Spindle Housing Assembly (Incl. Ref.#8-10,13,15,45, 47,48, & 55)	2
47	251-257	Bearing	6	*	67-7600	Spindle Housing Assembly (Incl. Ref.#9,13,15,16, 44,45,47,48, & 55)	1
48	67-7590	Housing - Spindle	3				
49	3256-2	Washer	A/R				
51	57-0690	Pin - Cotter Special	1				
52	29-4820	Roller	2				

*Not Illustrated

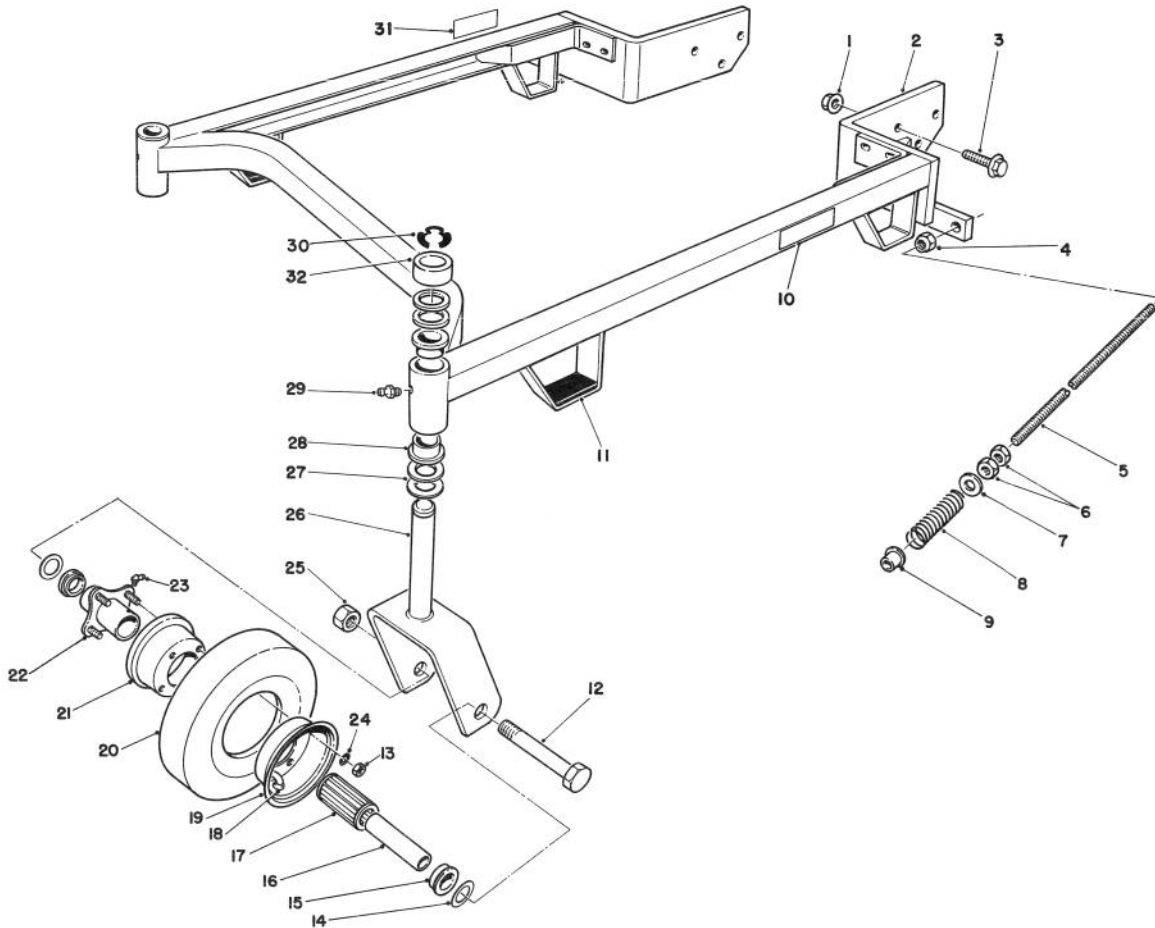


T-0214

CUTTING UNIT DECK COVERS

Ref. No.	Part No.	Description	No. Used
1	54-2250	Cover - Deck R.H.	1
2	74-2080	Decal - Proline	1
3	54-3190	Cover - Deck Center	1
4	62-6520	Handle - Adjustment	2
5	54-2220	Cover - Deck L.H.	1

Ref. No.	Part No.	Description	No. Used
6	46-8560	Screw - Self Tapping	5
7	29-0641	Trim - Jiffy	5
8	54-2760	Decal - 44"	1
9	3256-24	Washer	2
10	32151-72	Ring - Retaining	2

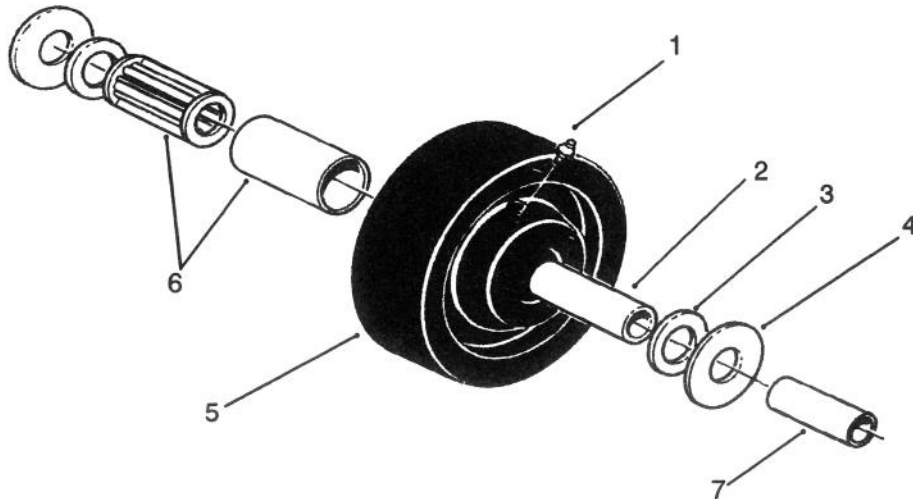


T-0215

CARRIER FRAME ASSEMBLY

Ref. No.	Part No.	Description	No. Used	Ref. No.	Part No.	Description	No. Used
1	32128-23	Nut - Lock	6	18	68-8950	Tube w/Valve	2
2	74-0160	Frame - Suspension (Incl. Ref. #28)	1	19	68-8920	Wheel Half - Female	2
3	3234-6	Screw - Hex. Hd. Flange	6	20	68-8960	Tire	2
4	3296-45	Nut - Lock	2	21	68-8930	Wheel Half - Male	2
5	74-0310	Shaft - Adjusting	2	22	68-8940	Hub - Center	2
6	3218-5	Nut	4	23	302-61	Fitting - Grease	2
7	41-8440	Washer	2	24	3256-4	Washer - Lock	8
8	74-0290	Spring - Compression	2	25	32153-5	Nut - Lock	2
9	256-156	Bushing	2	26	74-0251	Fork - Castor	2
10	68-8360	Decal - H.O.C., L.H. 1-4"	1	27	3-6781	Washer - Thrust	8
*	85-7450	Decal - H.O.C., L.H. 2-5"	1	28	28-9290	Bushing - Special	4
11	74-0340	Cushion - Rubber	2	29	302-5	Fitting - Grease	2
12	325-19	Screw - Hex. Hd. Cap	2	30	32151-91	Ring - Retaining	2
13	3219-2	Nut	8	31	74-0940	Decal - H.O.C., R.H. 1-4"	1
14	3256-6	Spacer - Wheel	4	*	85-7460	Decal - H.O.C., R.H. 2-5"	1
15	62-5580	Bushing	4	32	93-1167	Spacer - Castor	2
16	68-8980	Bushing - Spanner	2	*	13-3869	Castor Wheel Assembly (2 Per Carton)	1
17	62-5570	Bearing - Roller	2				

*Not Illustrated



T-0220

CASTOR WHEEL ASSEMBLY NO. 27-1050 (Optional)

Ref. No.	Part No.	Description	No. Used	Ref. No.	Part No.	Description	No. Used
1	305-55	Fitting - Grease	1	5	27-1190	Wheel	1
2	27-1200	Spanner - Bushing	1	6	27-1210	Bearing - Roller	1
3	27-1180	Retainer - Bearing	2	*	68-8980	Spanner	1
4	27-1170	Washer - Thrust	2				

*Note Used With Castor Fork No. 68-8900

TORO PART NUMBER INDEX

Part No.	Description	Pg. Ref. No. No. Qty.	Part No.	Description	Pg. Ref. No. No. Qty.
3-6781	Washer - Thrust	4 27 8	68-8940	Hub - Center	4 22 2
7-0081	Washer - Special	1 27 1	68-8950	Tube w/Valve	4 18 2
7-4150	Washer - Spindle	1 15 3	68-8960	Tire	4 20 2
111420	Fitting - Grease	2 66 1	68-8980	Spanner	5 * 1
13-3869	Castor Wheel Assembly	4 * 1	68-8980	Bushing - Spanner	4 16 2
13-3899	Deflector - Grass	1 2	71-2780	Shaft - Spindle Drive	1 8 2
13-8649	Housing	2 36 1	71-2790	Shaft - Spindle	2 44 1
20-9530	Washer	2 39 1	74-0160	Frame - Suspension	4 2 1
27-1160	Belt - Spindle	1 11 1	74-0251	Fork - Castor	4 26 2
27-1170	Washer - Thrust	5 4 2	74-0290	Spring - Compression	4 8 2
27-1180	Retainer - Bearing	5 3 2	74-0310	Shaft - Adjusting	4 5 2
27-1190	Wheel	5 5 1	74-0340	Cushion - Rubber	4 11 2
27-1200	Spanner - Bushing	5 2 1	74-0940	Decal - H.O.C., R.H. 1-4"	4 31 1
27-1210	Bearing - Roller	5 6 1	74-2080	Decal - Proline	3 2 1
28-9290	Bushing - Special	4 28 4	79-2760	Spacer - Idler Pivot	2 32 1
29-0641	Trim - Jiffy	3 7 5	85-7450	Decal - H.O.C., L.H. 2-5"	4 * 1
29-4820	Roller	2 52 2	85-7460	Decal - H.O.C., R.H. 2-5"	4 * 1
29-5590	Bracket - Pivot	1 6 2	92-1657	Arm - Idler	1 25 1
57-0690	Pin - Cotter Special	2 51 1	93-1167	Spacer - Castor	4 32 2
36-1740	Roller	2 31 1	251-257	Bearing	2 47 6
40-6230	Spring - Torsion	1 4 2	256-156	Bushing	4 9 2
40-6400	Shaft - Roller	2 54 1	283-55	Pin - Clevis	2 60 4
41-8440	Washer	4 7 2	302-2	Fitting - Grease	1 13 3
43-8480	Decal - Danger	2 37 1	302-5	Fitting - Grease	4 29 2
46-8560	Screw - Self Tapping	3 6 5	302-61	Fitting - Grease	4 23 2
51-4060	Bolt - Blade	2 46 3	305-55	Fitting - Grease	5 1 1
52-2860	Washer	1 24A/R	322-3	Screw - Hex. Hd.	1 29 1
52-4780	Rod - Belt	1 18 2	322-4	Screw - Hex. Hd.	2 58 11
54-0010	Blade	2 43 3	322-6	Screw - Hex. Hd.	2 34 1
54-2220	Cover - Deck L.H.	3 5 1	323-13	Screw - Hex. Hd.	2 40 1
54-2250	Cover - Deck R.H.	3 1 1	325-19	Screw - Hex. Hd.	4 12 2
54-2730	Spring - Extension	2 33 1	3211-8	Screw - Hex. Hd.	2 38 1
54-2750	"V" Belt - Deck Drive	2 63 1	3211-15	Screw - Hex. Hd.	1 1 2
54-2760	Decal - 44"	3 8 1	3218-2	Nut	2 35 1
54-3190	Cover - Deck Center	3 3 1	3218-5	Nut	4 6 4
54-3230	Cover - Bracket R.H.	1 12 1	3219-2	Nut	4 13 8
54-3240	Cover - Bracket	1 21 1	3229-1	Bolt - Carriage	2 57 2
54-9220	Decal - Danger	2 64 1	3229-3	Bolt - Carriage	2 41 2
55-4940	Blade - High Sail (Optional)	2 * 3	3230-2	Bolt - Carriage	1 19 2
57-2250	Deflector - Grass	1 2 1	3230-18	Bolt - Carriage	1 7 4
62-4480	Shaft - Roller	1 30 1	3234-6	Screw - Hex. Hd. Flange	4 3 6
62-5570	Bearing - Roller	4 17 2	3253-8	Washer - Lock	1 14 3
62-5580	Bushing	4 15 4	3256-2	Washer	2 49A/R
62-6520	Handle - Adjustment	3 4 2	3256-4	Washer - Lock	4 24 8
65-5950	Bushing - Pulley	1 26 1	3256-6	Spacer - Wheel	4 14 4
66-1340	Decal - Danger	2 56 1	3256-24	Washer	3 9 2
66-6380	Decal - Deflector Missing	2 62 1	3272-11	Pin - Cotter	2 53 1
67-5360	Decal - Shield	2 59 1	3290-355	Pin - Cotter	2 61 4
67-7561	Cup - Anti Scalp	2 42 3	3296-5	Nut - Lock	1 3 3
67-7570	Spacer - Spindle	2 45 3	3296-29	Nut - Lock	1 20 1
67-7580	Spacer - Bearing	2 55 3	3296-42	Nut - Lock	1 22 4
67-7590	Housing - Spindle	2 48 3	3296-45	Nut - Lock	4 4 2
67-7600	Spindle Housing Assembly	2 * 1	32128-13	Nut - Lock	1 17 2
67-7650	Pulley	1 16 1	32128-19	Nut - Flange Lock	1 23 1
67-7660	Spindle Housing Assembly	2 * 2	32128-23	Nut - Lock	4 1 6
67-7690	Pulley - Spindle	1 10 2	32146-20	Nut - Lock	1 9 3
68-8340	Decal - Blade Torque	2 65 1	32151-72	Ring - Retaining	2 10 2
68-8360	Decal - H.O.C., L.H. 1-4"	4 10 1	32151-91	Ring - Retaining	4 30 2
68-8920	Wheel Half - Female	4 19 2	32152-1	Nut - Lock	1 5 16
68-8930	Wheel Half - Male	4 21 2	32153-5	Nut - Lock	4 25 2

*Not Illustrated

