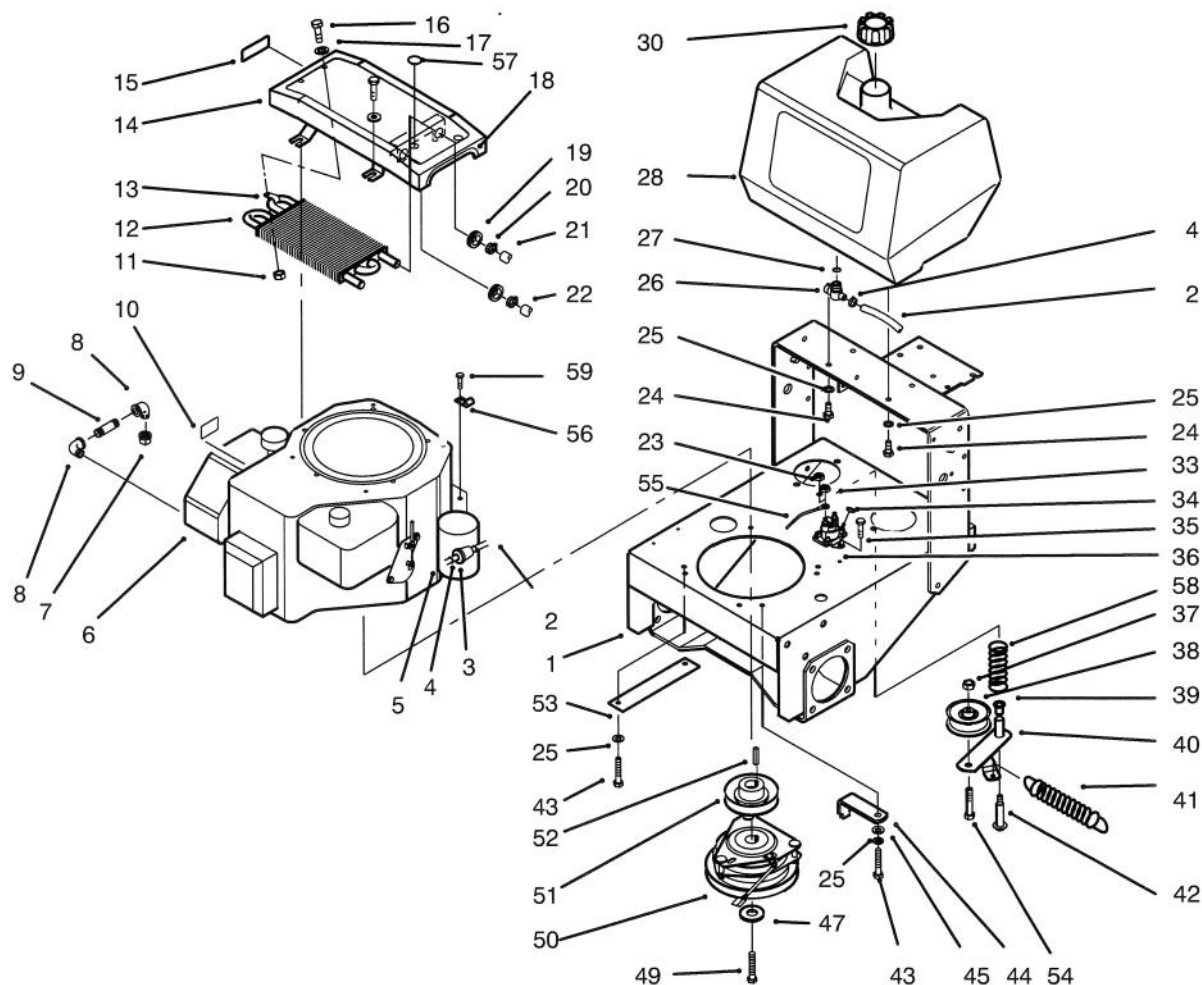




MODEL NO. 30186-59001 & UP

PARTS
CATALOG

PROLINE MID SIZE TRACTION UNIT 14 HP HYDRO DRIVE

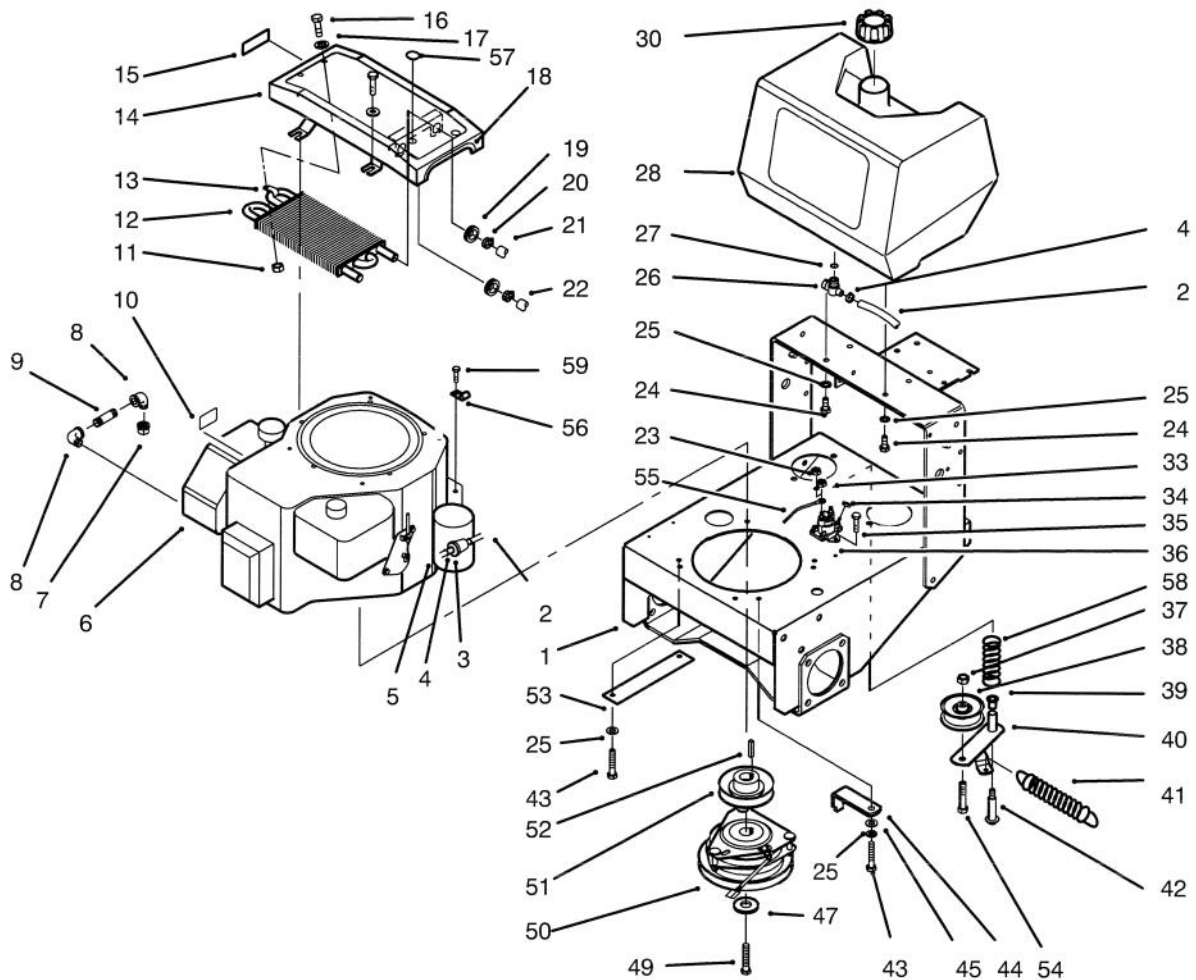


C-0733

FRAME, ENGINE, FUEL TANK, CLUTCH & COOLER ASS'Y

Ref. No.	Part No.	Description	No. Used
1	82-3900	Frame	1
2	47-2982	Hose - Fuel	1
3	56-6360	Filter - Fuel	1
4	2412-98	Clamp - Fuel Line	4
5	47-2964	Hose - Fuel	1
6		Engine - 14 H.P. Kohler	1
7	288-4	Cap - Pipe	1
8	74-0950	Elbow - Pipe	2
9	289-51	Nipple - Pipe	1
10	63-8440	Decal - Hot	1
11	3296-42	Nut - Lock	2
12	82-4220	Cooler - Oil	1
13	2412-134	"R" Clamp	1
14	82-4500	Mount - Cooler	1
15	74-0490	Decal - Fuel Line Shut Off	1

Ref. No.	Part No.	Description	No. Used
16	321-39	Screw - Hex. Hd.	6
17	3256-1	Washer - Flat	6
18	29-0642	Trim	1
19	240-9	Grommet	2
20	2412-136	Clamp - Hose	2
21	82-4193	Hose - Hyd.	1
22	82-4192	Hose - Hyd.	1
23	3296-6	Nut - Lock	1
24	322-3	Screw - Hex. Hd.	4
25	3253-4	Washer - Lock	6
26	74-0510	Valve - Fuel Shut Off	1
27	237-7	"O" Ring	1
28	82-8440	Tank - Fuel	1
30	55-3570	Cap - Fuel Tank	1
33	32149-2	Nut - Keps	2

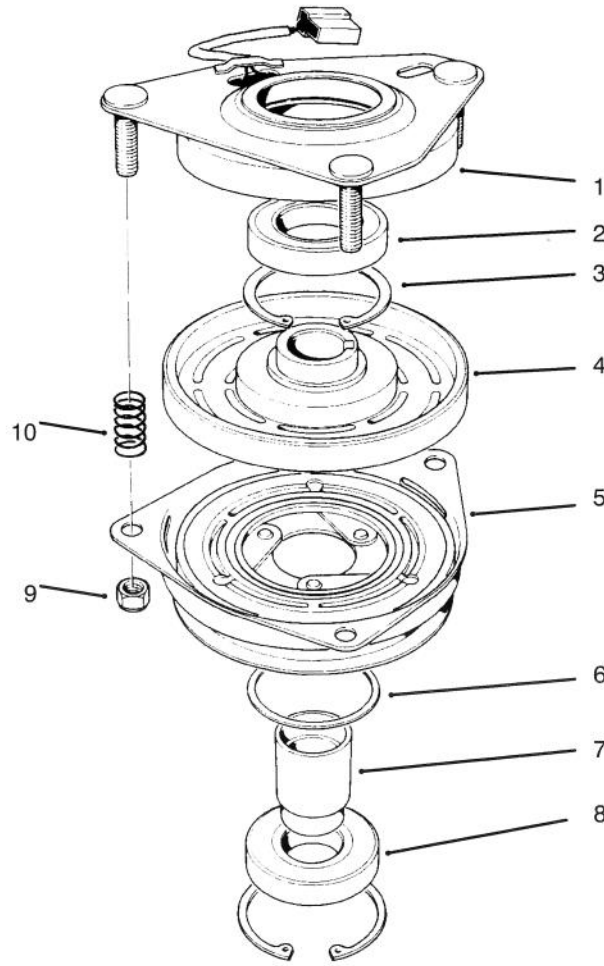


C-0733

FRAME, ENGINE, FUEL TANK, CLUTCH & COOLER ASS'Y

Ref. No.	Part No.	Description	No. Used
34	32149-8	Nut - Keps	1
35	32144-4	Screw	2
36	92-9845	Solenoid	1
37	3296-39	Nut	1
38	62-4540	Pulley - Idler	1
39	256-156	Bushing	2
40	86-4770	Idler Assembly (Incl. Ref.#39)	1
41	68-2190	Spring	1
42	27-6230	Bolt - Wheel	1
43	57-6380	Screw	4
44	51-4540	Retainer - Clutch	1

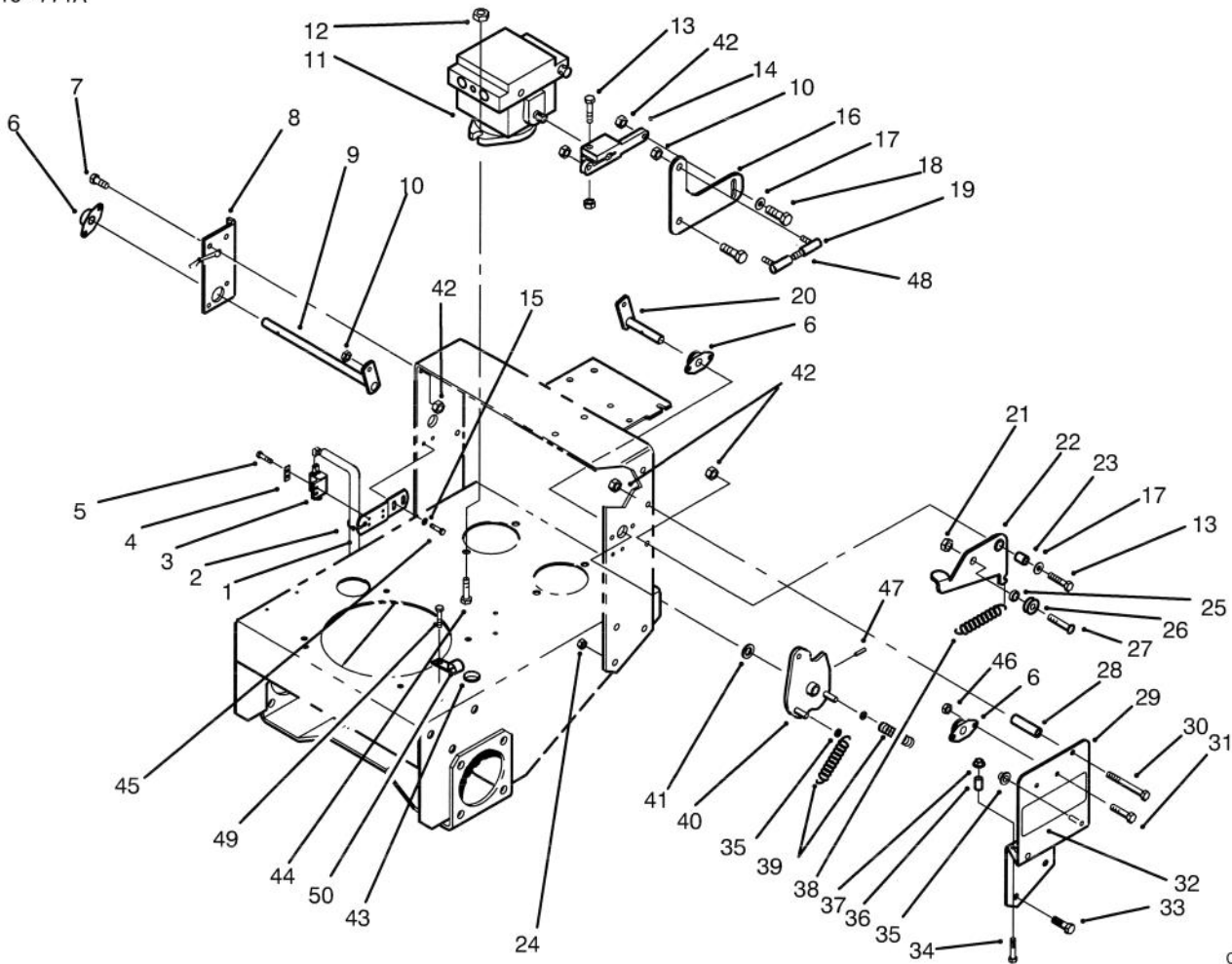
Ref. No.	Part No.	Description	No. Used
47	112843	Washer - Clutch	1
49	57-6360	Screw - Hex. Hd.	1
50	54-3200	Clutch Assembly	1
51	44-5940	Pulley - Clutch	1
52	608006	Key	1
53	74-0930	Guard - Pulley	1
54	323-9	Screw - Hex. Hd.	1
55	28-3891	Wire Assembly - Starter	1
56	2412-106	R-Clamp	1
57	2410-71	Cap - Plug	2
58	88-1880	Spring - Compression	1
59	32144-19	Screw	1



T-0080

CLUTCH ASSEMBLY NO. 54-3200

Ref. No.	Part No.	Description	No. Used	Ref. No.	Part No.	Description	No. Used
1	54-0230	Field Ass'y (Incl. Ref. # 2 & 3)	1	6	44-8330	Spacer - Pulley Bearing	1
2	251-292	Bearing - Field	1	7	44-8340	Collar - Bearing	1
3	44-8310	Ring - Retaining	2	8	251-291	Bearing - Pulley	1
4	44-8360	Field Coil, Rotor & Bearing Assembly (Incl. Ref. # 1)	1	9	3296-5	Nut - Lock	3
5	55-7410	Armature & Pulley Assembly (Incl. Ref. # 3, 6, 7, & 8)	1	10	44-8320	Spring	3



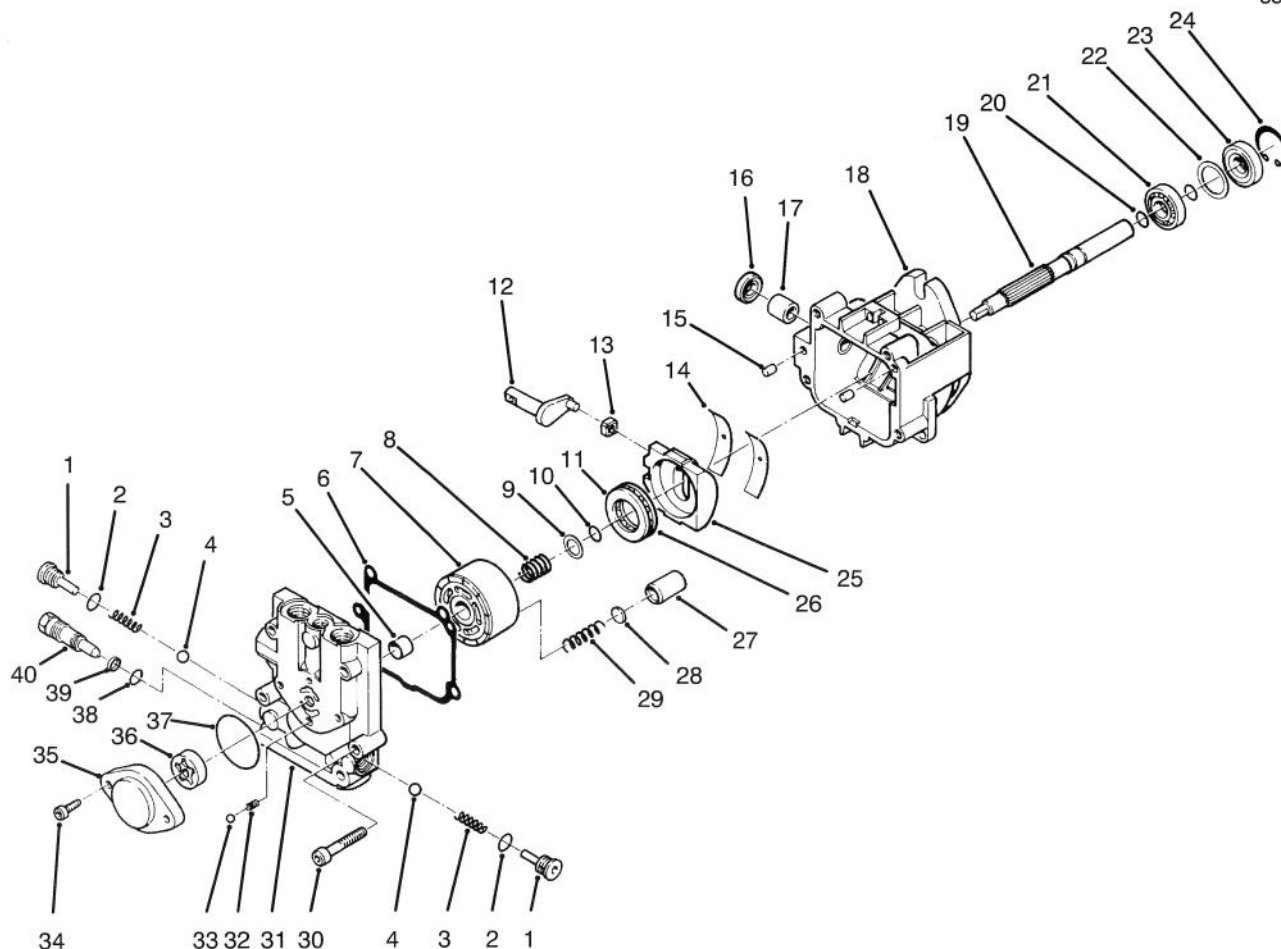
C-0734

HYDRAULIC PUMP & LINKAGE ASSEMBLY

Ref. No.	Part No.	Description	No. Used
1	82-4580	Bracket - Neutral	2
2	3290-378	Tie - Cable	3
3	65-7410	Switch Assembly	2
4	82-4570	Plate - Switch	2
5	32144-1	Screw - Hex.Hd.	4
6	82-4130	Bearing Assembly	4
7	322-5	Screw - Hex. Hd.	2
8	82-4210	Bracket - Bushing	1
9	82-4290	Lever Assembly R.H.	1
10	3296-13	Nut - Lock	4
11	82-8220	Pump Assembly - Hydraulic	2
12	32128-42	Nut - Lock	4
13	322-7	Screw - Hex. Hd.	4
14	82-3790	Arm - Pump Control	2
15	3256-1	Washer	4
16	82-4230	Arm - Follower	2
17	3256-23	Washer - Flat	4
18	322-5	Screw - Hex. Hd.	4
19	2411-34	Joint - Ball	4
20	82-4270	Lever Assembly - L.H.	1
21	3296-47	Nut - Lock	2
22	82-4330	Detent Arm Assembly L.H.	1
*	82-4340	Detent Arm Assembly R.H.	1
23	82-4370	Bushing	2
24	3296-39	Nut	6
25	82-4240	Spacer	2
26	251-259	Bearing - Ball	2
27	3274-32	Screw - Hex. Hd.	2

Ref. No.	Part No.	Description	No. Used
28	82-3920	Stop - Reverse	2
29	82-4090	Bracket Assembly L.H.	1
*	82-4070	Bracket Assembly R.H.	1
30	322-14	Screw - Hex. Hd.	2
31	321-3	Screw - Hex. Hd.	8
32	82-4600	Decal - Hydro Drive	2
33	323-6	Screw - Hex. Hd.	6
34	321-8	Screw - Hex. Hd.	2
35	32112-11	Nut - Push On	8
36	80-0650	Spacer	2
37	32128-10	Nut - Lock	2
38	82-4160	Spring	2
39	86-4760	Spring	4
40	93-1371	Pivot Assembly L.H.	1
*	93-1372	Pivot Assembly R.H.	1
41	257-5	Washer - Thrust	2
42	3296-29	Nut - Lock	12
43	237-124	Grommet	1
44	324-5	Screw - Hex. Hd.	4
45	32144-3	Screw - Hex. Hd.	4
46	3296-42	Nut - Lock	8
47	32121-4	Pin - Roll	2
48	82-4120	Rod	2
49	32144-4	Screw	1
50	2412-106	"R" Clamp	1
51	3290-418	Pushnut	4
52	86-4750	Bracket - Stop	2

* Not Illustrated



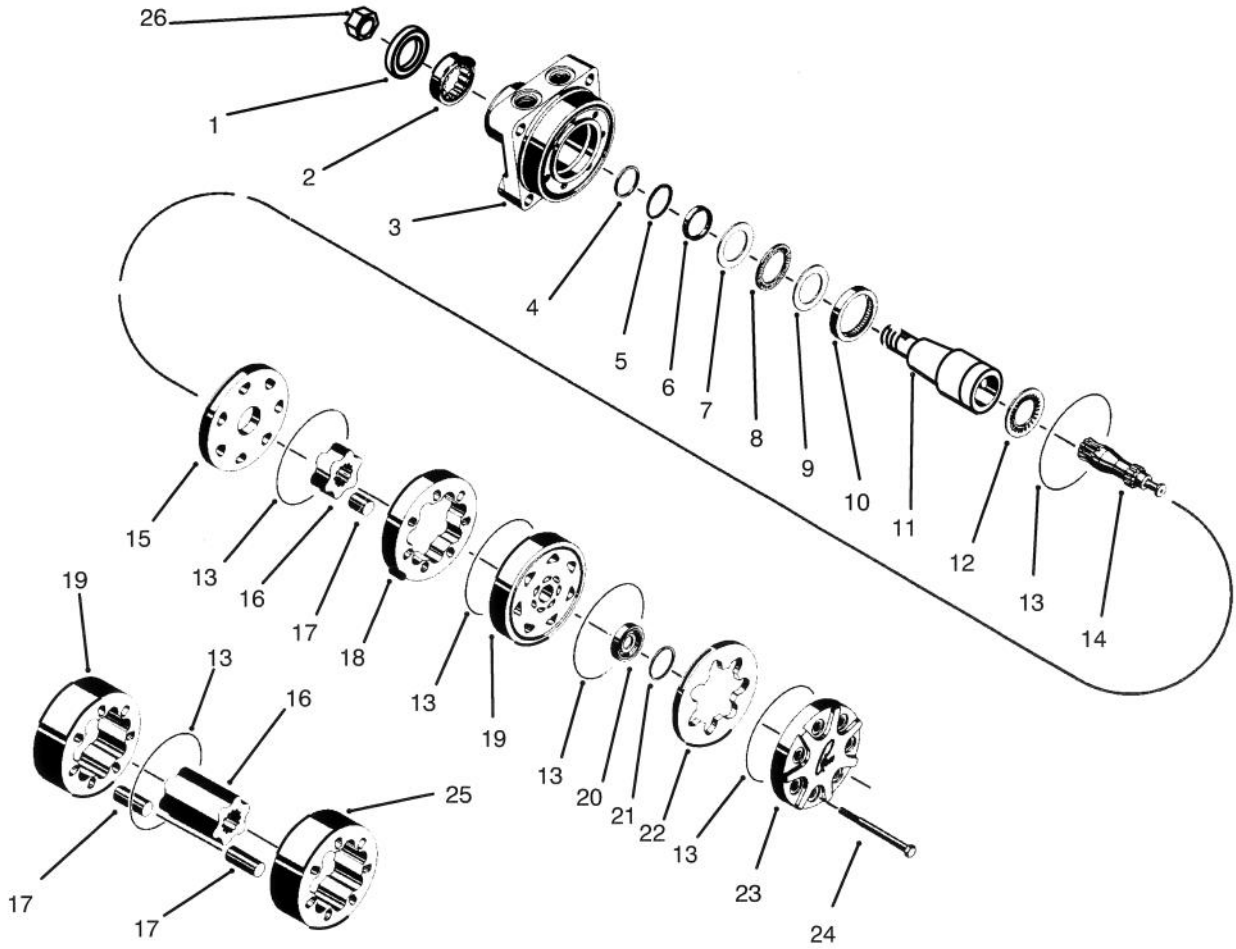
T-1236

HYDRAULIC PUMP ASSEMBLY NO. 82-8220

Ref. No.	Part No.	Description	No. Used
1	80-6120	Check Valve Kit (Incl. Ref. #2-4)	1
2		Seal - O-Ring	2
3		Spring	2
4		Ball	2
5		Journal - Bearing	1
6		Gasket - End Cap	1
7		Cylinder Block Kit (Incl. Ref. #8-10 & 27-29)	1
8		Spring	1
9		Washer	1
10		Ring - Retaining	1
11		Plate - Thrust	1
12		Arm - Trunion	1
13		Guide - Slot	1
14		Cradle - Bearing	2
15		Pin	2
16		Seal - Lip	1
17		Journal - Bearing	1
18		Housing - Assembly (Incl. Ref. #16 & 17)	1
19		Shaft	1
20		Ring - Retaining	2
21		Bearing - Ball	1
22		Spacer	1

Ref. No.	Part No.	Description	No. Used
23		Seal - Lip	1
24		Ring - Retaining	1
25		Swashplate Assembly	1
26		Roller - Thrust	1
27		Piston	5
28		Washer - Thrust	5
29		Spring - Piston	5
30		Screw	4
31		End Cap Assembly (Incl. Ref. #5)	1
32		Ball	1
33		Spring	1
34		Screw	2
35		Housing - Charge Pump	1
36		Gerotor Assembly	1
37		Seal - O-Ring	1
38		Seal - O-Ring	1
39		Ring - Back-Up	1
40		Valve - Bypass	1
*	80-6110	Charge Relief Valve Kit (Incl. Ref. #32-33)	1
*	80-6130	Overhaul Seal Kit (Incl. Ref. #6, 10, 16, 20, 23 & 37-39)	1

*Not Illustrated



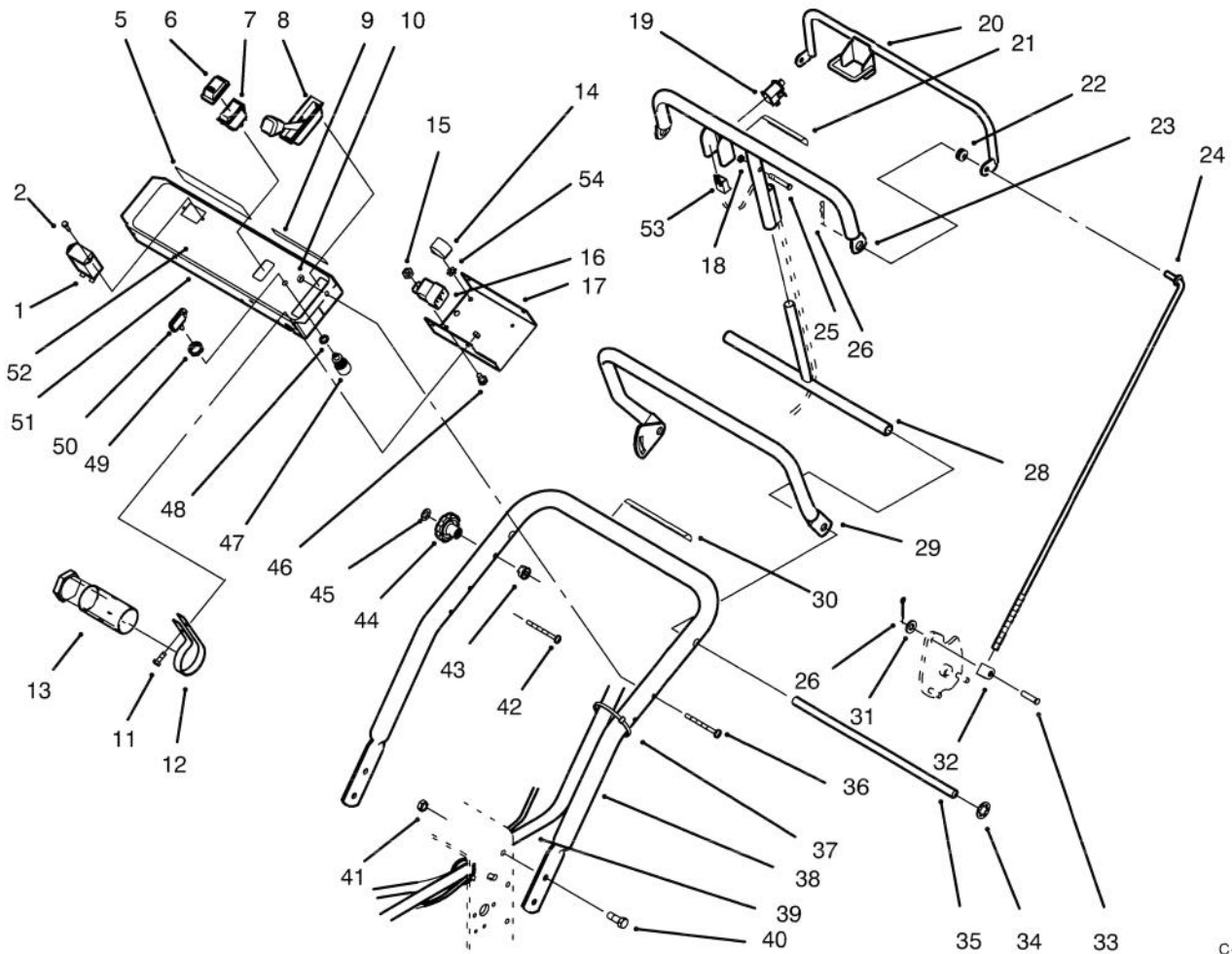
C-0737

TRACTION DRIVE MOTOR (Torquemotor)

Ref. No.	Part No.	Description	No. Used
1		Seal	1
2		Bearing	1
3		Housing	1
4		Washer - Back Up	1
5		Washer - Back Up	1
6		Seal	1
7		Washer - Thrust	1
8		Bearing - Thrust	1
9		Washer - Thrust	1
10		Bearing - Inner	1
11		Coupling - Shaft	1
12		Bearing - Thrust	1
13		"O"Ring	5
14		Link - Drive	1

Ref. No.	Part No.	Description	No. Used
15		Plate Wear	1
16		Rotor	1
17		Vane	7
18		Stator	
19		Manifold	1
20		Commutator	1
21		Seal - Commutator	1
22		Commutator - Ring	1
23		Cover - End	1
24		Bolt - Special	A/R
25		Stator Half	
26	85-7310	Nut	1
*	85-7320	Kit - Seal (Incl. Ref. #1,4,6,13 & 20)	1

*Not Illustrated

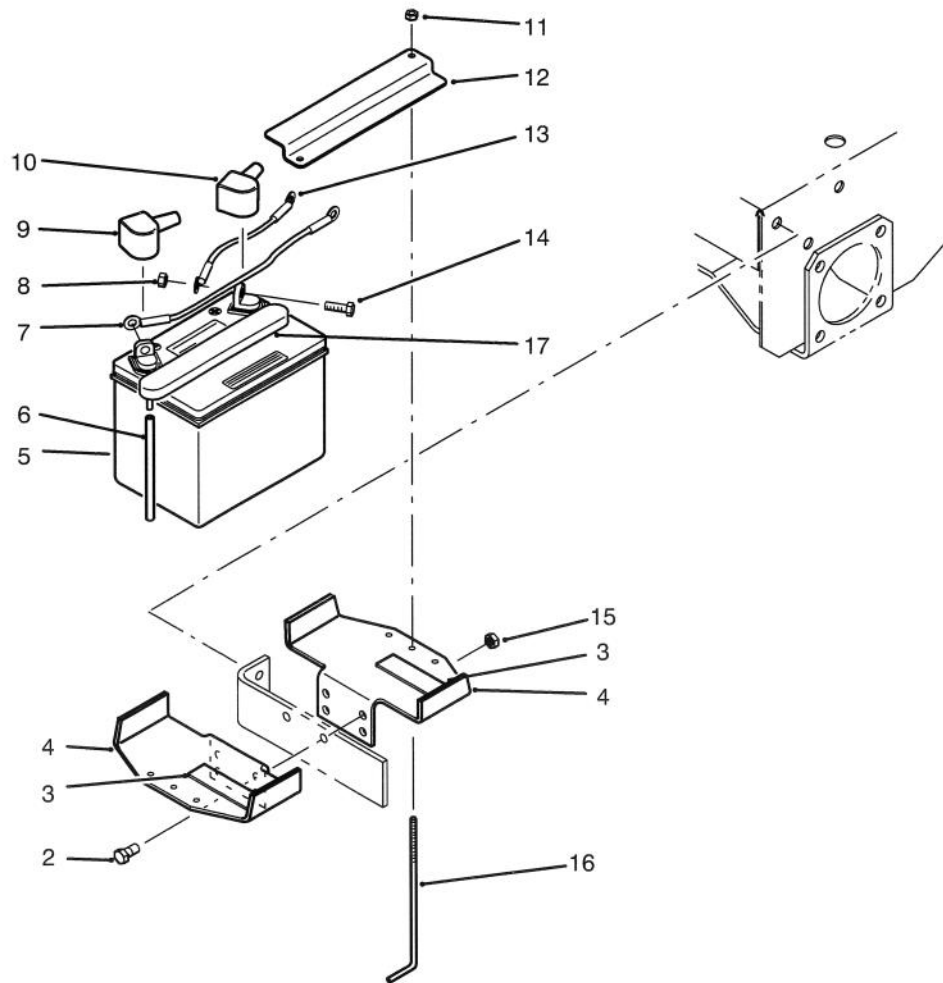


C-0769

HANDLE / CONTROL PANEL ASSEMBLY

Ref. No.	Part No.	Description	No. Used
1	75-6820	Meter - Hour	1
2	32144-18	Screw - Hex. Hd.	2
5	71-1280	Decal - Danger	1
6	82-3820	Boot - Switch	1
7	82-2300	Switch - Clutch	1
8	74-0630	Control - Throttle	1
9	65-3090	Decal - Instructions	1
10	3296-2	Nut - Lock	4
11	32144-19	Screw	4
12	2412-120	"R"Clamp	2
13	74-0720	Tube - Manual	1
14	86-7910	Module	1
15	3296-42	Nut - Lock	2
16	63-7590	Relay	1
17	93-1187	Panel - Bottom	1
18	3296-2	Nut	1
19	82-2190	Switch - Bail	1
20	82-7680	Bail Assembly	1
21	82-2610	Decal - Control Bar	1
22	237-141	Grommet	2
23	82-7690	Control Bar Assembly	1
24	82-7631	Rod - Control	2
25	32105-1	Screw - Hex. Hd.	1
26	3290-307	Pin - Cotter	4
28	82-3940	Pivot Control Assembly	1
29	82-4300	Handle Assembly	1

Ref. No.	Part No.	Description	No. Used
30	82-4590	Decal - Caution	1
31	3256-23	Washer - Flat	2
32	74-0521	Fitting - Rod	2
33	283-6	Pin - Clevis	2
34	32151-80	Ring - Push On	2
35	74-0470	Rod - Pivot	1
36	32105-14	Screw - Hex. Hd.	4
37	3290-378	Tie - Cable	2
38	67-6451	Handle - Upper	1
39	93-1188	Wire Harness (Ref.)	1
40	3234-11	Screw - Hex. Hd.	4
41	32128-21	Nut - Lock	4
42	3230-26	Bolt Carriage	1
43	82-3840	Spacer - Latch	1
44	19-4050	Knob - Handle	1
45	32112-18	Retainer - Bolt	1
46	321-3	Screw - Hex. Hd.	2
47	23-0660	Switch - Ignition	1
48	3234-5	Washer - Lock	1
49	218-461	Nut	1
50	63-8360	Key	1
51	82-2181	Panel - Control	1
52	82-7721	Decal - Control Panel	1
53	218-595	Body	1
54	3255-7	Washer - Lock, Ext.	1

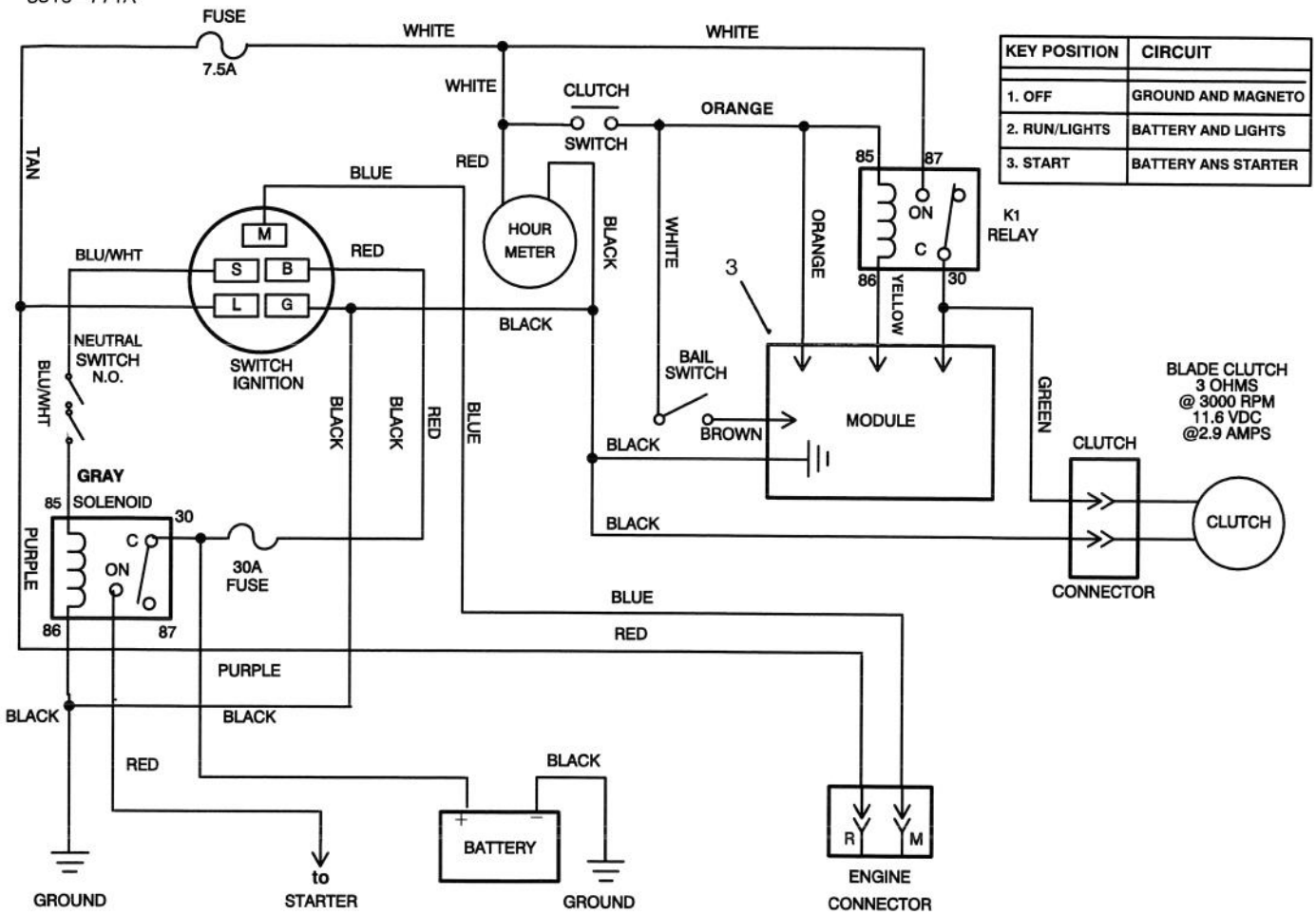


T-0875

BATTERY ASSEMBLY

Ref. No.	Part No.	Description	No. Used
2	323-9	Screw - Hex. Hd.	2
3	51-4210	Pad - Battery Mount	2
4	92-2350	Holder - Battery	2
5	82-4640	Battery	1
6	68-3810	Tube - Vent	1
7	93-1189	Cable - Battery (-)	1
8	32149-1	Nut	2
9	77-0980	Boot - Terminal	1

Ref. No.	Part No.	Description	No. Used
10	77-0981	Boot - Terminal	1
11	3296-42	Nut - Lock	2
12	82-4620	Strap - Battery	1
13	54-3094	Cable - Battery (+)	1
14	322-3	Screw - Cap Hex. Hd.	2
15	3296-39	Nut - Lock	2
16	12-5950	Rod - Battery Support	2
17	84-1830	Cap	1



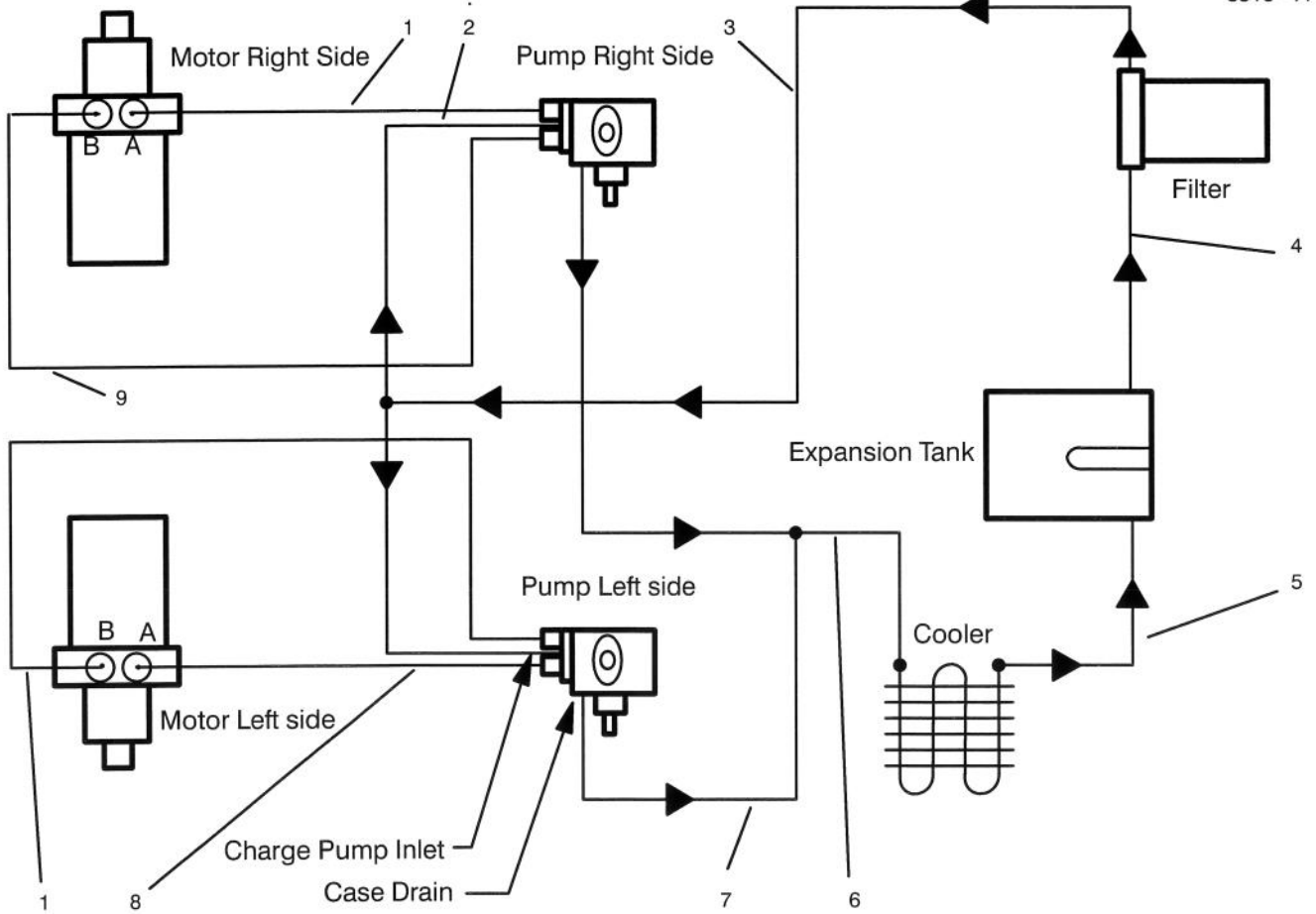
KEY POSITION	CIRCUIT
1. OFF	GROUND AND MAGNETO
2. RUN/LIGHTS	BATTERY AND LIGHTS
3. START	BATTERY AND STARTER

BLADE CLUTCH
3 OHMS
@ 3000 RPM
11.6 VDC
@2.9 AMPS

ELECTRIC SCHEMATIC

Ref. No.	Part No.	Description	No. Used
1	93-1188	Wire Harness (Ref.)	1
2	63-7590	Relay (Ref.)	1

Ref. No.	Part No.	Description	No. Used
3	86-7910	Interlock Module (Ref.)	1



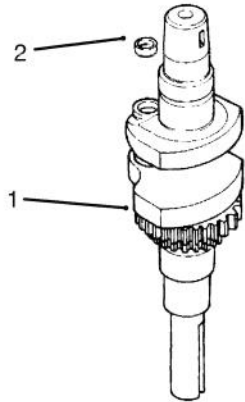
C-0708

HYDRAULIC SCHEMATIC

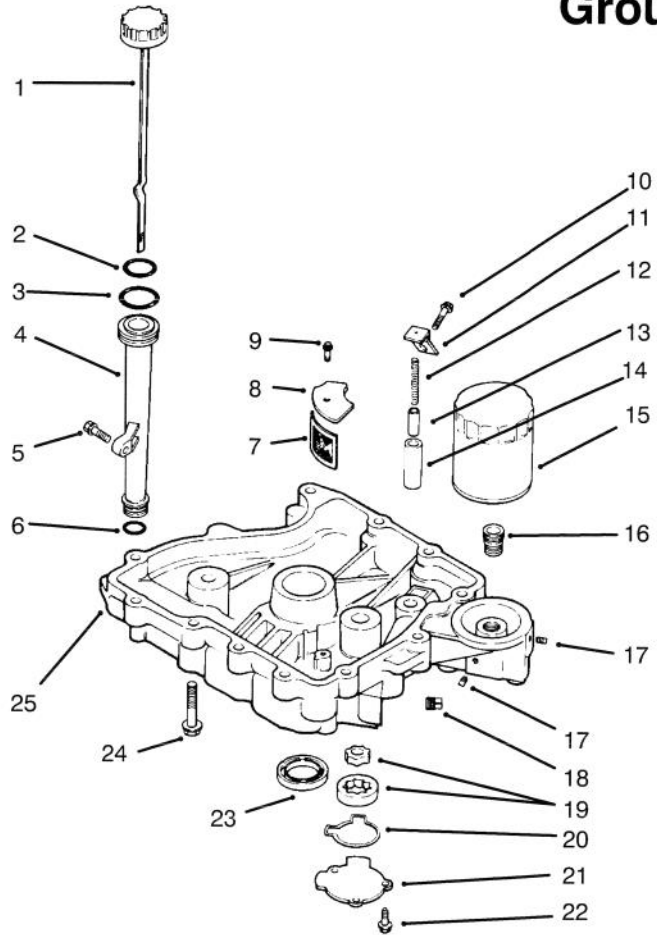
Ref. No.	Part No.	Description	No. Used
1	82-4550	Hose Assembly	2
2	82-4170	Hose Assembly	1
3	82-4180	Hose Assembly	1
4	82-4200	Hose Assembly	1
5	82-4193	Hose Assembly	1

Ref. No.	Part No.	Description	No. Used
6	82-4192	Hose Assembly	1
7	82-4201	Hose Assembly	1
8	82-4560	Hose Assembly	1
9	82-4540	Hose Assembly	1

Group 1



Group 3



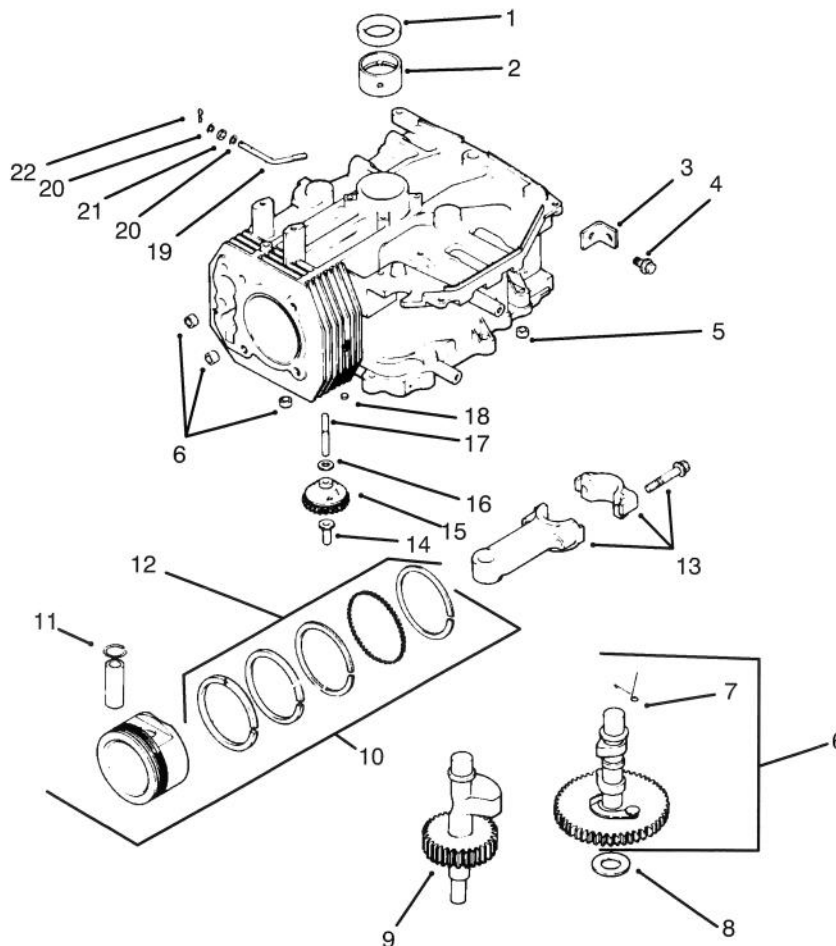
C-0770

ENGINE KOHLER MODEL NO. CV14 S-1429

Ref. No.	Part No.	Description	No. Used
Crankshaft Group 1			
1	12 014 02	Crankshaft Assembly	1
2	12 139 0	Plug	1
Oil Pan / Lubrication Group 3			
1	12 038 01	Dipstick Assembly	1
2	12 153 01	"O"Ring - Dipstick	1
3	12 153 02	"O"Ring - Upper Tube	1
4	12 123 04	Tube - Oil Fill	1
5	SM-0545020	Screw - Oil Fill Tube	1
6	12 153 01	"O"Ring - Lower Tube	2
7	12 162 02	Screen - Oil Pick Up	1
8	12 096 03	Cover - Oil Screen	1
9	SM-0545016	Screw	1
10	SM-1039025	Screw	1
11	12 126 02	Bracket - Oil Pump Relief Valve	1

Ref. No.	Part No.	Description	No. Used
12	12 089 03	Spring - Oil Pump Relief Valve	1
13	12 462 01	Piston - Oil Pump Relief Valve	1
14	12 208 01	Body - Oil Pump Relief Valve	1
15	52 050 02	Filter - Oil	1
16	12 136 01	Adapter - Oil Filter	1
17	X-75-1	Plug - 1/8 N.P.T.F.	2
18	X-75-10	Plug - 3/8 N.P.T.F.	2
19	12 393 01	Pump - Oil Assembly	1
20	12 032 04	"O"Ring - Pump Cover	1
21	12 096 02	Cover - Oil Pump	1
22	SM-0545016	Screw	3
23	12 032 03	Seal - Oil (P.T.O.End)	1
24	SM-0839045	Screw - Oil Pan	11
25	12 199 09	Pan - Oil	1

Group 2



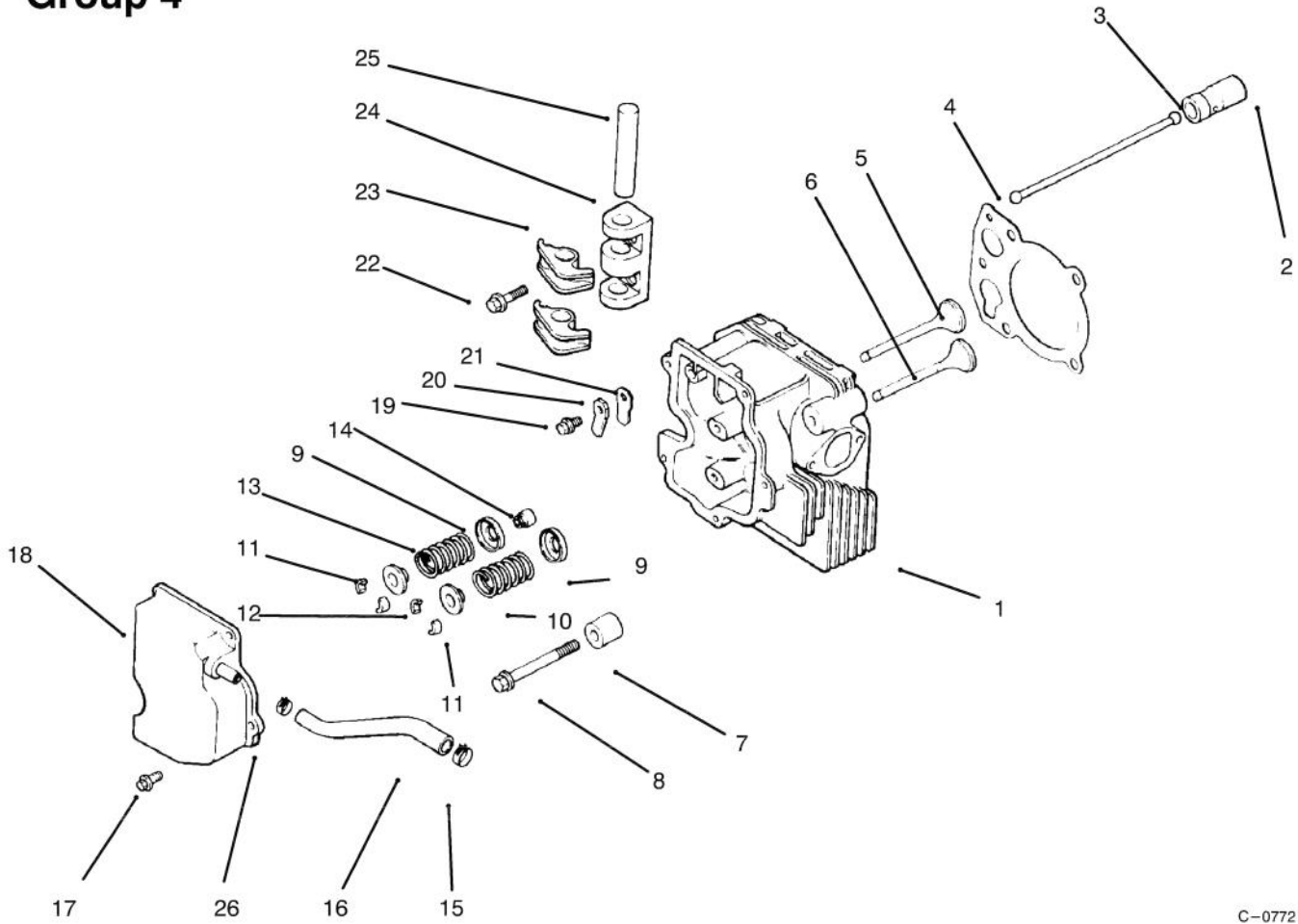
C-0771

ENGINE KOHLER MODEL NO. CV14 S-1429(Continued)

Ref. No.	Part No.	Description	No. Used
		Crankcase	
		Group 2	
1	12 032 03	Seal - Crankshaft	1
2	12 030 01	Bearing - Crankshaft Flywheel End (Std.)	1
*	12 030 02	Bearing - Crankshaft (.25)	1
*	12 030 03	Bearing - Crankshaft (.50)	1
3	12 445 02	Strap - Lifting	1
4	SM-0839025	Screw - Lifting Strap	1
5	12 380 03	Dowel - Locating	4
6	12 010 01	Camshaft Assembly	1
7	12 089 18	Spring - Actuating	1
8	12 422 08	Shim - Camshaft	1
*	12 422 02	Shim - Camshaft	A/R
*	12 422 10	Shim - Camshaft	A/R
*	12 422 11	Shim - Camshaft	A/R
*	12 422 12	Shim - Camshaft	A/R
*	12 422 06	Shim - Camshaft	A/R
*	12 422 07	Shim - Camshaft	A/R
9	12 422 04	Shaft - Balance	1

Ref. No.	Part No.	Description	No. Used
10	12 847 01	Piston W/Ring Set (Std.)	1
*	12 847 02	Piston W/Ring Set (.25)	1
*	12 847 03	Piston W/Ring Set (.50)	1
11	12 018 02	Retainer - Piston Pin	2
12	12 108 01	Ring Set (Std.)	1
*	12 108 02	Ring Set (.25)	1
*	12 108 03	Ring Set (.50)	1
13	12 067 01	Connecting Rod (Std.)	1
*	12 067 02	Connecting Rod (.25)	1
14	12 380 01	Pin - Governor Regulating	1
15	12 043 05	Gear - Governor Assembly	1
16	SM-0631005	Washer - Governor Gear	1
17	12 144 02	Shaft - Governor Gear	1
18	52 139 09	Plug - Cap	1
19	12 144 01	Shaft - Governor Cross	1
20	SM-0631015	Washer - Governor Shaft	1
21	12 032 01	Seal - Cross Shaft	1
22	12 380 04	Pin - Governor Hitch	1
*	12 522 01	Short Block	1

*Not Illustrated

Group 4

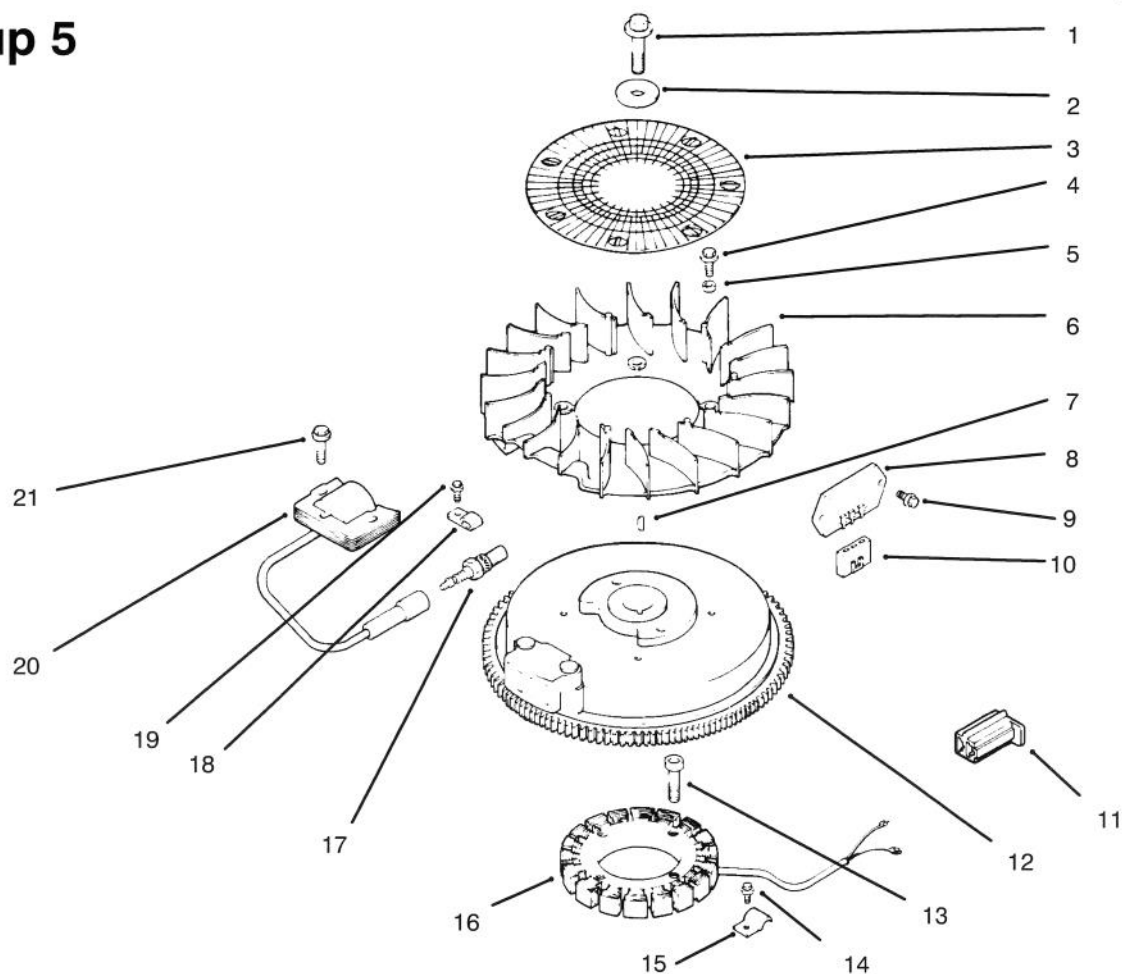
C-0772

ENGINE KOHLER MODEL NO. CV14 S-1429(Continued)

Ref. No.	Part No.	Description	No. Used
1	12 318 01	Cylinder Head / Valve / Breather - Group 4	1
*	12 755 02	Kit Cylinder Head	1
2	12 351 01	Lifter - Valve	2
3	12 441 01	Rod - Push	2
4	12 041 04	Gasket - Cylinder Head	1
5	12 017 01	Valve - Intake (Std.)	1
	12 017 02	Valve - Intake (.25)	1
6	12 016 01	Valve - Exhaust (Std)	1
	12 016 02	Valve - Exhaust (.25)	1
7	12 112 04	Spacer - Head Bolt	1
8	SM-1040080	Screw - Cylinder Head	5
9	52 018 01	Retainer - Spring	2
10	12 089 15	Spring - Valve, Exhaust	1
11	12 173 01	Cap - Valve Spring	2

Ref. No.	Part No.	Description	No. Used
12	12 755 03	Kit - Retainer	2
13	12 089 13	Spring - Valve, Intake	1
14	12 032 02	Seal - Valve Stem	1
15	X-426-9	Clamp - Hose	2
16	12 326 03	Hose - Breather	1
17	SM-0645020	Screw - Valve Cover	3
18	12 096 07	Cover - Valve W/Nipple	1
19	SM-0545010	Screw - Breather Reed	1
20	12 018 01	Retainer - Breather Reed	1
21	12 402 01	Reed - Breather	1
22	SM-0642025	Screw - Rocker Bridge	2
23	12 189 01	Arm - Rocker	2
24	12 126 05	Bridge - Rocker Arm	1
25	12 144 03	Shaft - Rocker Arm	1
26	X-426-3	Clamp - Hose	1

Group 5



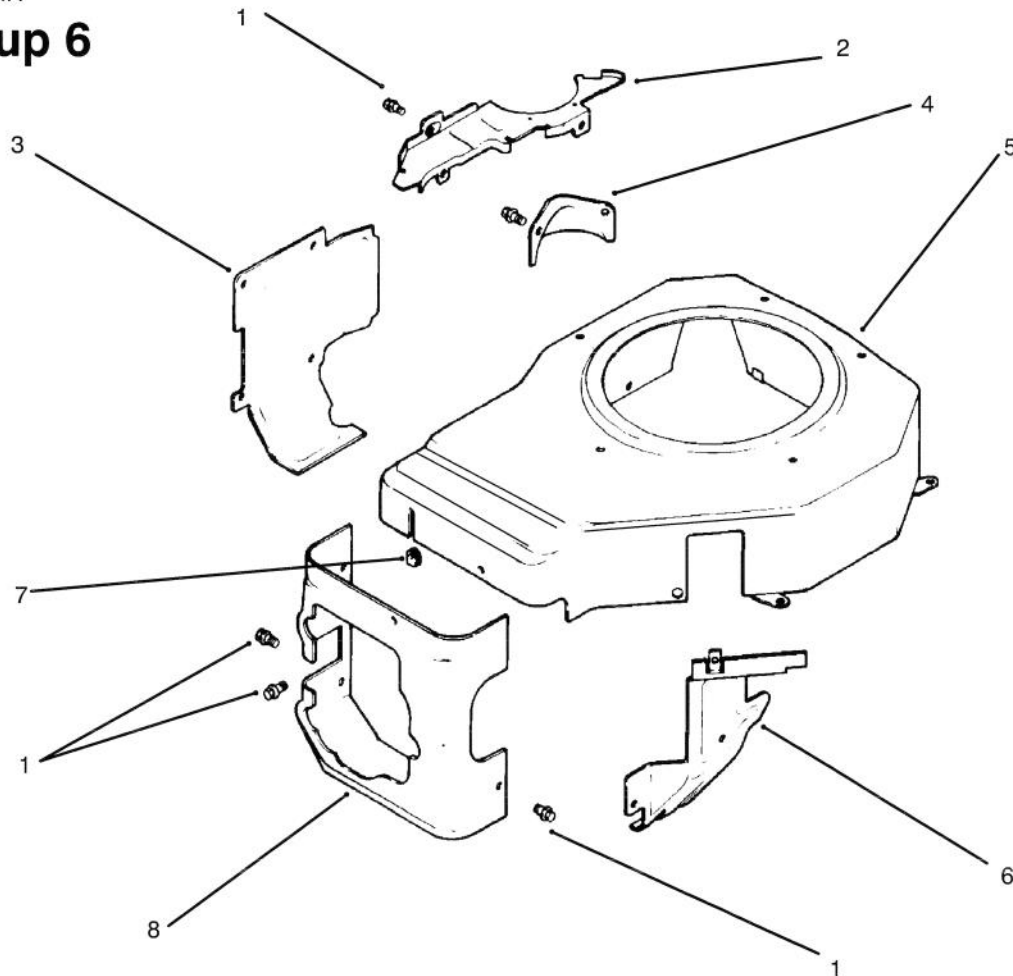
C-0773

ENGINE KOHLER MODEL NO. CV14 S-1429(Continued)

Ref. No.	Part No.	Description	No. Used	Ref. No.	Part No.	Description	No. Used
		Ignition / Electrical Group 5					
1	M-1040045	Screw - Flywheel	1	12	12 025 08	Flywheel Assembly	1
2	12 468 03	Washer - Flywheel	1	13	M-0548025	Screw - Stator	4
3	12 162 01	Screen - Grass	1	14	SM-0545010	Screw - Stator Harness	1
4	SM-0651016	Screw - Fan	4	15	12 154 02	Clip - Stator Harness	1
5	12 112 01	Spacer - Fan	4	16	41 085 07	Stator - 15 Amp.	1
6	12 157 02	Fan	1	17	12 132 02	Spark Plug	1
7	X-42-15	Key	1	18	X-728-1	Clip - Kill Lead	1
8	12 403 09	Rectifier - Unregulator	1	19	SM-0545010	Screw - Lead Clip	1
9	M-0651016	Screw - Regulator	2	20	12 584 01	Module - Ignition	1
10	236602	Connector - Regulator	1	21	SM-0545020	Screw - Ignition Module	2
11	41 155 03	Connector	1	*	25 518 05	Lead - Black, Rectifier to Connector (5"-14 Gauge)	1
				*	12 518 01	Lead - White, Ground to Kill	1

* Not Illustrated.

Group 6



C-0774

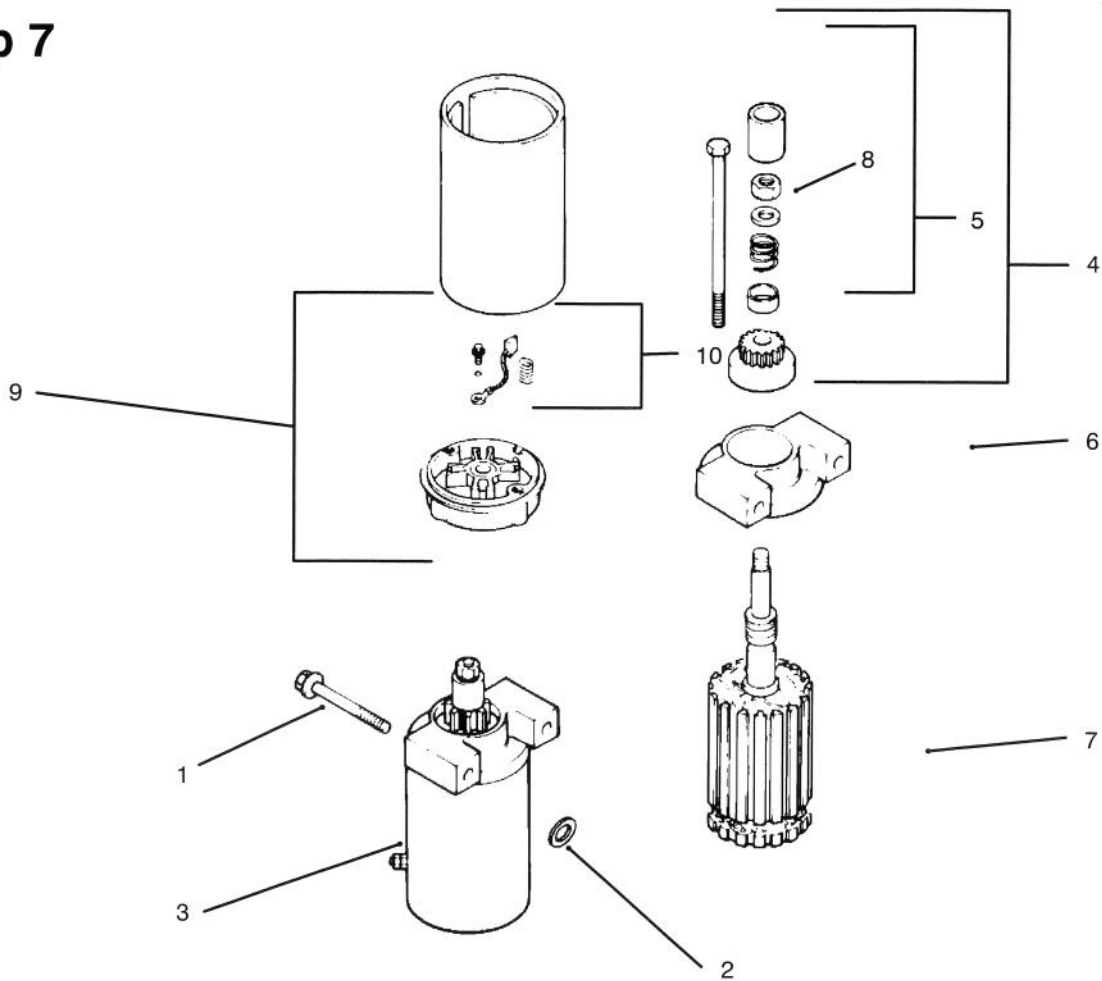
ENGINE KOHLER MODEL NO. CV14 S-1429(Continued)

Ref. No.	Part No.	Description	No. Used
		Blower Housing & Baffle Group 6	
1	SM-0545010	Screw	14
2	12 146 07	Plate - Blower Housing	1
3	12 063 01	Baffle - Cylinder Barrel	1
4	12 096 01	Cover - Starter	1

Ref. No.	Part No.	Description	No. Used
5	12 027 09	Cover - Housing	1
6	12 063 05	Baffle - Carburetor	1
7	12 313 03	Grommet	1
8	12 063 03	Baffle - Cylinder Head	1
*	133 14	Decal - H.P.	1

* Not Illustrated.

Group 7

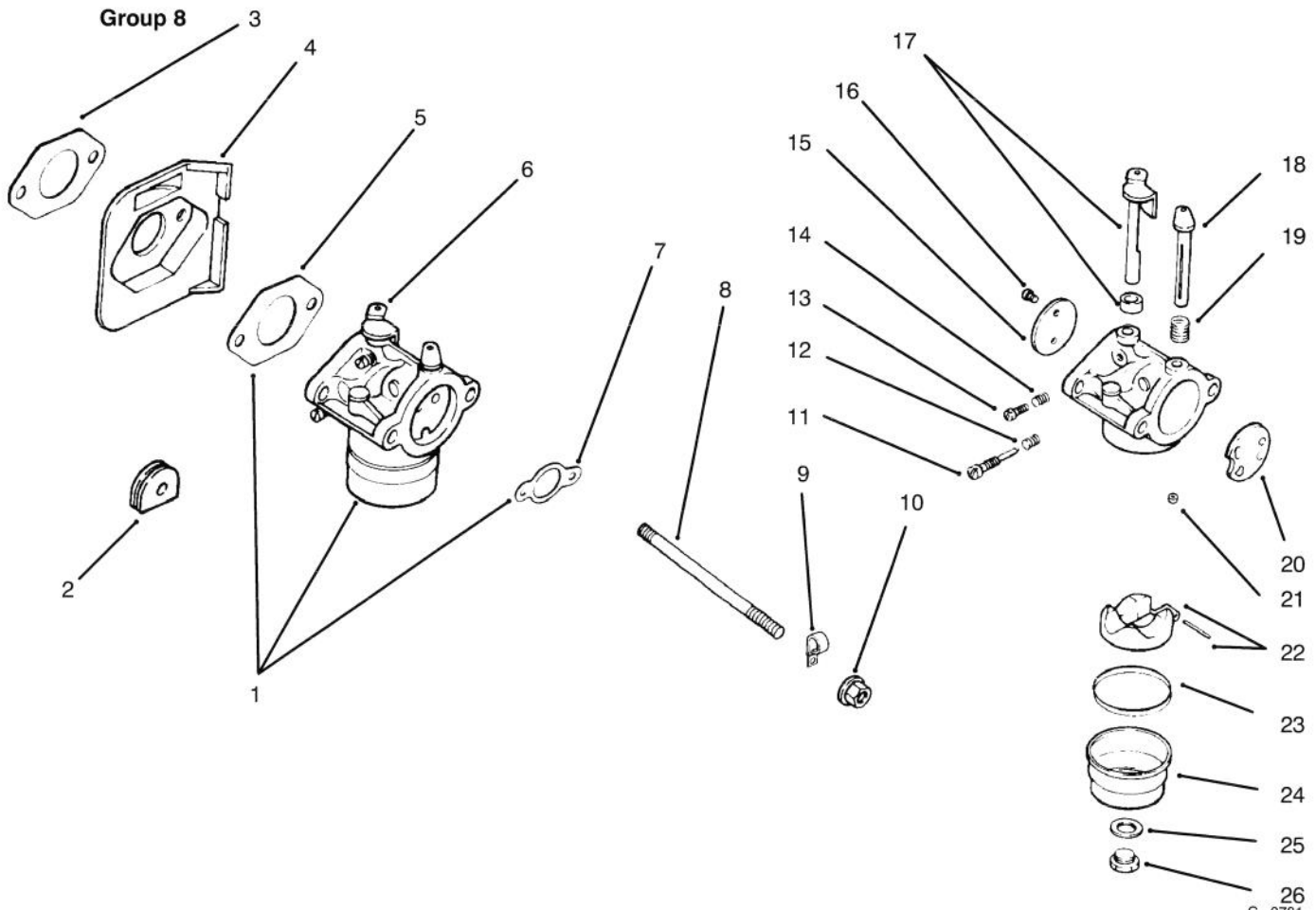


C-0776

ENGINE KOHLER MODEL NO. CV14 S-1429(Continued)

Ref. No.	Part No.	Description	No. Used	Ref. No.	Part No.	Description	No. Used
		Starting System Group 7		6	12 277 01	Cap - Drive End	1
1	SM-0839065	Screw	5	7	12 170 02	Armature	1
2	12 468 01	Washer	2	8	12 086 02	Screw - Flange	1
3	12 098 06	Starter (Incl. Ref.#4-10)	1	9	12 243 -03	Cap - Commutator End	
4	12 755 12	Kit - Drive (Incl. Ref.#5)	1	10	52 755 15	Kit - Brush	1
5	12 755 06	Kit	1	*	52 357 01	Lubricant	1

* Not Illustrated.



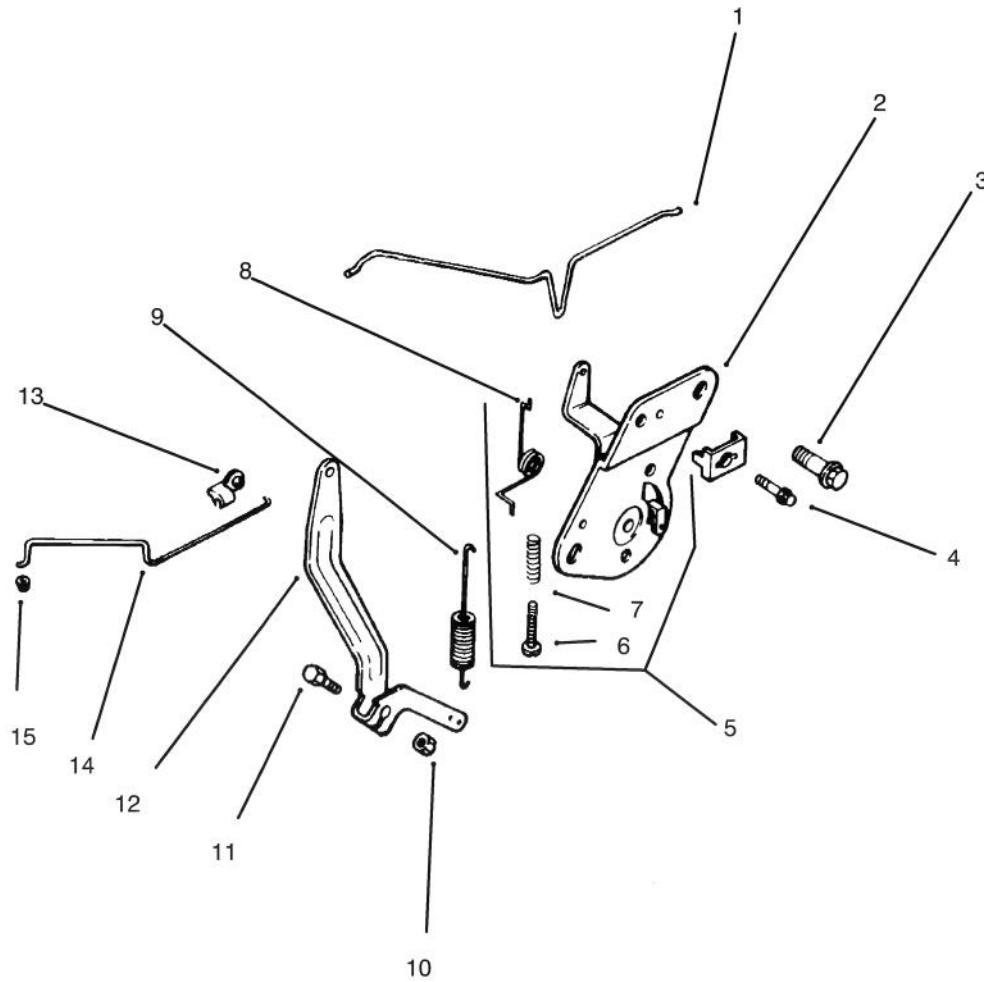
ENGINE KOHLER MODEL NO. CV14 S-1429(Continued)

Ref. No.	Part No.	Description	No. Used
		Fuel System Group 8	
1	12 853 01	Kit - Carburetor	1
2	12 313 01	Grommet	1
3	12 041 01	Gasket - Air Cleaner	1
4	12 265 01	Deflector - Heat	1
5	12 053 01	Carburetor Assembly(Ref.)	1
6	12 041 01	Gasket - Carburetor	1
7	12 041 02	Gasket - Air Cleaner	1
8	M-0629122	Stud - Carburetor	2
9	48 154 01	Clip - Cable	1
10	SM-0641060	Nut - Carburetor	2
11	12 368 01	Needle - Idle	1
12	12 089 09	Spring - Idle	1
13	12 086 04	Screw - Idle	1

Ref. No.	Part No.	Description	No. Used
14	12 089 09	Spring - Idle	1
15	12 146 03	Plate - Throttle	1
16	25 086 27	Screw - Throttle Plate	2
17	12 144 09	Shaft Assembly-Throttle	1
18	12 144 08	Shaft - Choke	1
19	12 089 10	Spring - Choke Return	1
20	12 146 02	Plate - Choke	1
21	12 337 01	Jet - Main	1
22	12 757 02	Kit - Float	1
23	12 041 05	Gasket - Bowl	1
24	12 104 01	Bowl - Fuel	1
25	12 041 06	Gasket - Bowl	1
26	12 086 05	Screw - Bowl	1
*	12 757 01	Kit - Carburetor Repair	1
*	12 755 09	Kit - Kit High Altitude Jet	1

* Not Illustrated.

Group 9



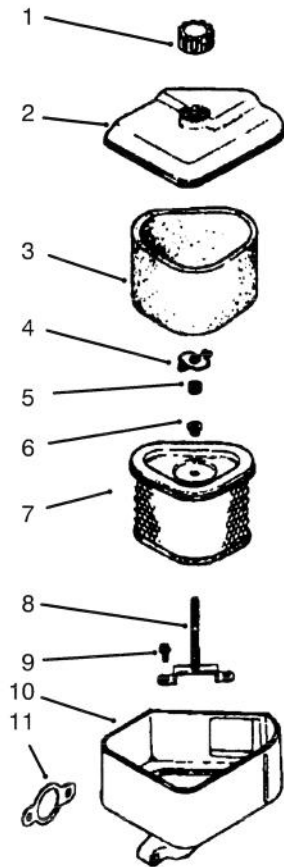
C-0775

ENGINE KOHLER MODEL NO. CV14 S-1429(Continued)

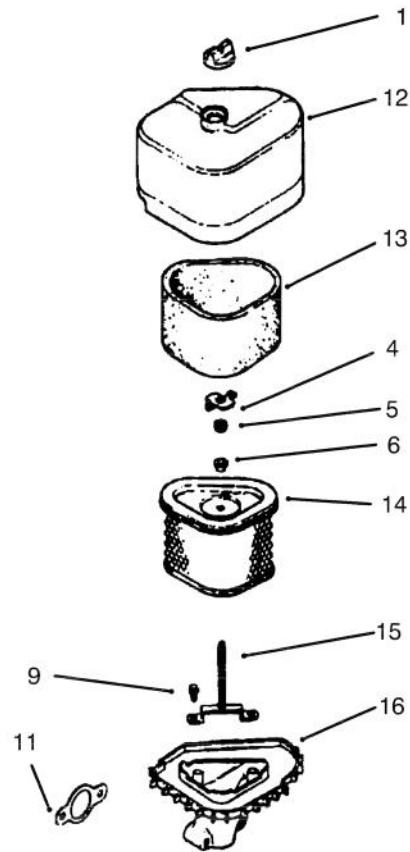
Ref. No.	Part No.	Description	No. Used	Ref. No.	Part No.	Description	No. Used
		Engine Control Group 9					
1	12 079 03	Linkage - Choke	1	7	12 089 11	Spring	1
2	12 237 01	Clamp - Cable	1	8	12 089 04	Spring - Choke	1
3	SM-0645020	Screw - Hex. Hd.	2	9	12 089 20	Spring - Governor	1
4	SM-0545016	Screw - Cable Clamp	1	10	SM-0641060	Nut - Governor	1
5	12 536 01	Control - Speed (Incl. Ref.#6-8)	1	11	SM-0642025	Screw - Governor	1
6	SM-0443025	Screw	1	12	12 090 05	Lever - Governor	1
				13	25 158 09	Bushing - Black Retainer	1
				14	12 079 01	Linkage - Throttle	1
				15	25 158 08	Bushing - Natural, Linkage	1

* Not Illustrated.

Group 10



Used on engines before serial no. 240490004



Used on engines serial no. 240490004 and up_{C-}

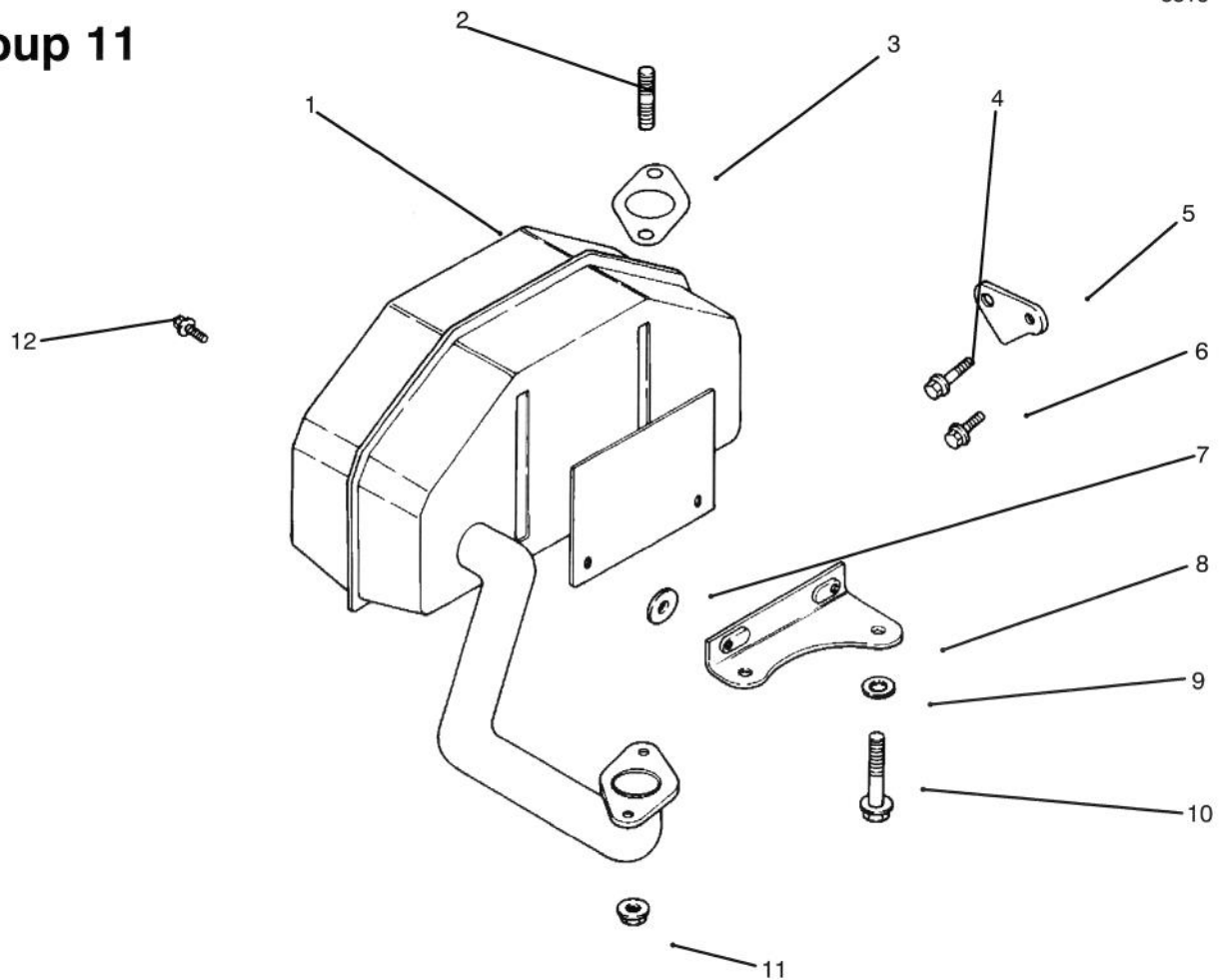
ENGINE KOHLER MODEL NO. CV14 S-1429(Continued)

Ref. No.	Part No.	Description	No. Used
1	12 341 01	Knob - Air Cleaner Cover	1
2	12 096 06	Cover - Air Cleaner	1
3	12 083 08	Precleaner - Element	1
4	12 100 01	Nut - Wing	1
5	X-25-63	Washer - Flat	1
6	12 313 04	Grommet	1
7	12 083 05	Element - Air Cleaner	1
8	12 072 03	Stud - Mounting Plate	1

Ref. No.	Part No.	Description	No. Used
9	12 086 01	Screw - Mounting Plate	1
10	12 094 01	Base - Air Cleaner	1
11	12 041 02	Gasket - Air Cleaner	1
12	12 096 16	Cover - Air Cleaner	1
13	12 083 12	Precleaner - Element	1
14	12 083 10	Element - Air Cleaner	1
15	12 072 04	Stud - Mounting Plate	1
16	12 094 07	Base - Air Cleaner	1

* Not Illustrated.

Group 11



C-0782

ENGINE KOHLER MODEL NO. CV14 S-1429(Continued)

Ref. No.	Part No.	Description	No. Used	Ref. No.	Part No.	Description	No. Used
		Exhaust Group 11		6	SM-0645020	Screw - Valve Cover	1
				7	X-25-52	Washer - Flat	1
				8	12 126 39	Bracket - Muffler	1
				9	12 468 01	Washer - Flat	1
				10	M-0840050	Screw	1
				11	SM-0841080	Nut - Muffler	2
				12	M-0650012	Screw	2
				*	12 755 01	Gasket Set	1
1	12 068 03	Muffler	1				
2	M-0829036	Stud - Exhaust Manifold	2				
3	12 041 03	Gasket - Exhaust	1				
4	SM-0645025	Screw - Lifting Strap	1				
5	12 445 01	Strap - Lifting	1				

* Not Illustrated.

TORO PART NUMBER INDEX (Continued)

Part No.	Description	Pg. Ref. No. No. Qty.	Part No.	Description	Pg. Ref. No. No. Qty.
112843	Washer - Clutch	2 47 1	82-3840	Spacer - Latch	8 43 1
608006	Key	2 52 1	82-3900	Frame	1 1 1
12-5950	Rod - Battery Support	9 16 2	82-3910	Reservoir - Oil	6 23 1
19-4050	Knob - Handle	8 44 1	82-3920	Stop - Reverse	4 28 2
23-0660	Switch - Ignition	8 47 1	82-3940	Pivot Control Assembly	8 28 1
27-6230	Bolt - Wheel	2 42 1	82-4070	Bracket Assembly R.H.	4 * 1
28-3891	Wire Assembly - Starter	2 55 1	82-4090	Bracket Assembly L.H.	4 29 1
29-0590	Screen - Filler	6 22 1	82-4110	VBelt	6 49 1
29-0642	Trim	1 18 1	82-4120	Rod	4 48 2
44-5940	Pulley - Clutch	2 51 1	82-4130	Bearing Assembly	4 6 4
44-8310	Ring - Retaining	3 3 2	82-4140	Bracket - Filter	6 30 1
44-8320	Spring	3 10 3	82-4160	Spring	4 38 2
44-8330	Spacer - Pulley Bearing	3 6 1	82-4170	Hose - Hyd.	6 17 1
44-8340	Collar - Bearing	3 7 1	82-4170	Hose Assembly	11 2 1
44-8360	Field Coil, Rotor & Bearing	3 4 1	82-4180	Hose - Hyd.	6 16 1
47-2964	Hose - Fuel	1 5 1	82-4180	Hose Assembly	11 3 1
47-2982	Hose - Fuel	1 2 1	82-4192	Hose - Hyd.	6 9 1
51-4210	Pad - Battery Mount	9 3 2	82-4192	Hose - Hyd.	1 22 1
51-4540	Retainer - Clutch	2 44 1	82-4192	Hose Assembly	11 6 1
54-0100	Head Assembly - Filter	6 32 1	82-4193	Hose - Hyd.	1 21 1
54-0230	Field Ass'y	3 1 1	82-4193	Hose - Hyd.	6 27 1
54-3094	Cable - Battery (+)	9 13 1	82-4193	Hose Assembly	11 5 1
54-3200	Clutch Assembly	2 50 1	82-4200	Hose - Hyd.	6 20 1
55-3570	Cap - Fuel Tank	1 30 1	82-4200	Hose Assembly	11 4 1
55-7410	Armature & Pulley Assembly	3 5 1	82-4201	Hose - Hyd.	6 7 1
56-6360	Filter - Fuel	1 3 1	82-4201	Hose Assembly	11 7 1
57-6360	Screw - Hex. Hd.	2 49 1	82-4210	Bracket - Bushing	4 8 1
57-6380	Screw	2 43 4	82-4220	Cooler - Oil	1 12 1
62-4540	Pulley - Idler	2 38 1	82-4230	Arm - Follower	4 16 2
63-7590	Relay	8 16 1	82-4240	Spacer	4 25 2
63-7590	Relay (Ref.)	10 2 1	82-4270	Lever Assembly - L.H.	4 20 1
63-8360	Key	8 50 1	82-4290	Lever Assembly R.H.	4 9 1
63-8440	Decal - Hot	1 10 1	82-4300	Handle Assembly	8 29 1
65-3090	Decal - Instructions	8 9 1	82-4330	Detent Arm Assembly L.H.	4 22 1
65-7410	Switch Assembly	4 3 2	82-4340	Detent Arm Assembly R.H.	4 * 1
67-6451	Handle - Upper	8 38 1	82-4370	Bushing	4 23 2
67-8110	Filter - Oil	6 36 1	82-4380	Pulley - Pump	6 50 2
68-2190	Spring	2 41 1	82-4500	Mount - Cooler	1 14 1
68-3810	Tube - Vent	9 6 1	82-4540	Hose - Hyd.	6 5 2
71-1280	Decal - Danger	8 5 1	82-4540	Hose Assembly	11 9 1
74-0470	Rod - Pivot	8 35 1	82-4550	Hose - Hyd.	6 6 1
74-0490	Decal - Fuel Line Shut Off	1 15 1	82-4550	Hose Assembly	11 1 2
74-0510	Valve - Fuel Shut Off	1 26 1	82-4560	Hose - Hyd.	6 12 1
74-0521	Fitting - Rod	8 32 2	82-4560	Hose Assembly	11 8 1
74-0630	Control - Throttle	8 8 1	82-4570	Plate - Switch	4 4 2
74-0720	Tube - Manual	8 13 1	82-4580	Bracket - Neutral	4 1 2
74-0930	Guard - Pulley	2 53 1	82-4590	Decal - Caution	8 30 1
74-0950	Elbow - Pipe	1 8 2	82-4600	Decal - Hydro Drive	4 32 2
75-6820	Meter - Hour	8 1 1	82-4620	Strap - Battery	9 12 1
76-0200	Cap Assembly - Oil	6 21 1	82-4640	Battery	9 5 1
77-0980	Boot - Terminal	9 9 1	82-7631	Rod - Control	8 24 2
77-0981	Boot - Terminal	9 10 1	82-7680	Bail Assembly	8 20 1
80-0650	Spacer	4 36 2	82-7690	Control Bar Assembly	8 23 1
80-6090	Key	6 51 2	82-7721	Decal - Control Panel	8 52 1
80-6110	Charge Relief Valve Kit	5 * 1	82-8220	Pump Assembly - Hydraulic	4 11 2
80-6120	Check Valve Kit	5 1 1	82-8230	Motor - Wheel	6 37 2
80-6130	Overhaul Seal Kit	5 * 1	82-8440	Tank - Fuel	1 28 1
82-2181	Panel - Control	8 51 1	84-1830	Cap	9 17 1
82-2190	Switch - Bail	8 19 1	85-7310	Nut	7 26 1
82-2300	Switch - Clutch	8 7 1	85-7310	Nut	6 39 2
82-2610	Decal - Control Bar	8 21 1	85-7320	Kit - Seal	7 * 1
82-3790	Arm - Pump Control	4 14 2	86-4730	Plate - Frame	6 54 2
82-3820	Boot - Switch	8 6 1	86-4740	Spacer	6 53 2
82-3830	Hub - Wheel	6 44 2	86-4750	Bracket - Stop	4 52 2

*Not Illustrated

TORO PART NUMBER INDEX (Continued)

Part No.	Description	Pg. No.	Ref. No.	Qty.	Part No.	Description	Pg. No.	Ref. No.	Qty.
86-4760	Spring	4	39	4	3213-8	Screw - Hex. Hd.	6	45	8
86-4770	Idle Assembly	2	40	1	3230-26	Bolt Carriage	8	42	1
86-7910	Interlock Module (Ref.)	10	3	1	3234-5	Washer - Lock	8	48	1
86-7910	Module	8	14	1	3234-11	Screw - Hex. Hd.	8	40	4
88-1880	Spring - Compression	2	58	1	3241-5	Screw - Set	6	48	4
92-2350	Holder - Battery	9	4	2	3253-3	Washer - Lock	6	29	2
92-9845	Solenoid	2	36	1	3253-4	Screw	6	11	3
93-1187	Panel - Bottom	8	17	1	3253-4	Washer - Lock	6	10	3
93-1188	Wire Harness (Ref.)	10	1	1	3253-4	Washer - Lock	1	25	6
93-1188	Wire Harness (Ref.)	8	39	1	3255-7	Washer - Lock, Ext.	8	54	1
93-1189	Cable - Battery (-)	9	7	1	3256-1	Washer	4	15	4
93-1371	Pivot Assembly L.H.	4	40	1	3256-1	Washer - Flat	1	17	6
93-1372	Pivot Assembly R.H.	4	*	1	3256-23	Washer	6	52	1
218-461	Nut	8	49	1	3256-23	Washer - Flat	4	17	4
218-595	Body	8	53	1	3256-23	Washer - Flat	8	31	2
231-117	Tire	6	40	2	3257-8	Key - Woodruff	6	38	2
232-27	Valve stem	6	*	2	3274-32	Screw - Hex. Hd.	4	27	2
237-7	ORing	1	27	1	3290-307	Pin - Cotter	8	26	4
237-30	ORing	6	4	A/R	3290-378	Tie - Cable	4	2	3
237-42	ORing	6	14	A/R	3290-378	Tie - Cable	8	37	2
237-78	ORing	6	35	A/R	3290-418	Pushnut	4	51	4
237-79	ORing	6	24	A/R	3296-2	Nut	8	18	1
237-80	ORing	6	2	A/R	3296-2	Nut - Lock	8	10	4
237-124	Grommet	4	43	1	3296-5	Nut - Lock	3	9	3
237-141	Grommet	8	22	2	3296-6	Nut - Lock	1	23	1
240-9	Grommet	1	19	2	3296-13	Nut - Lock	4	10	4
242-50	Nut - Lug	6	42	8	3296-23	Nut	6	1	8
242-87	Wheel	6	41	2	3296-29	Nut	6	25	2
2410-71	Cap - Plug	2	57	2	3296-29	Nut - Lock	4	42	12
2411-34	Joint - Ball	4	19	4	3296-39	Nut	4	24	6
2412-98	Clamp - Fuel Line	1	4	4	3296-39	Nut	2	37	1
2412-106	RClamp	4	50	1	3296-39	Nut - Lock	9	15	2
2412-106	R-Clamp	2	56	1	3296-42	Nut - Lock	1	11	2
2412-120	RClamp	8	12	2	3296-42	Nut - Lock	9	11	2
2412-134	RClamp	1	13	1	3296-42	Nut - Lock	8	15	2
2412-136	Clamp - Hose	1	20	2	3296-42	Nut - Lock	4	46	8
251-259	Bearing - Ball	4	26	2	3296-47	Nut - Lock	4	21	2
251-291	Bearing - Pulley	3	8	1	32105-1	Screw - Hex. Hd.	8	25	1
251-292	Bearing - Field	3	2	1	32105-14	Screw - Hex. Hd.	8	36	4
256-156	Bushing	2	39	2	32112-11	Nut - Push On	4	35	8
257-5	Washer - Thrust	4	41	2	32112-17	Nut - Push On	6	43	8
283-6	Pin - Clevis	8	33	2	32112-18	Retainer - Bolt	8	45	1
288-4	Cap - Pipe	1	7	1	32121-4	Pin - Roll	4	47	2
289-51	Nipple - Pipe	1	9	1	32128-10	Nut - Lock	4	37	2
2815-15	Fitting - Hyd.	6	8	1	32128-21	Nut - Lock	8	41	4
2815-16	Fitting - Hyd.	6	18	1	32128-42	Nut - Lock	4	12	4
321-3	Screw	6	28	2	32144-1	Screw - Hex. Hd.	4	5	4
321-3	Screw - Hex. Hd.	4	31	8	32144-3	Screw - Hex. Hd.	4	45	4
321-3	Screw - Hex. Hd.	8	46	2	32144-4	Screw	2	35	2
321-8	Screw - Hex. Hd.	4	34	2	32144-4	Screw	4	49	1
321-39	Screw - Hex. Hd.	1	16	6	32144-18	Screw - Hex. Hd.	8	2	2
322-3	Screw	6	31	2	32144-19	Screw	8	11	4
322-3	Screw - Cap Hex. Hd.	9	14	2	32144-19	Screw	2	59	1
322-3	Screw - Hex. Hd.	1	24	4	32149-1	Nut	9	8	2
322-5	Screw - Hex. Hd.	4	7	2	32149-2	Nut - Keps	1	33	2
322-5	Screw - Hex. Hd.	4	18	4	32149-8	Nut - Keps	2	34	1
322-7	Screw - Hex. Hd.	4	13	4	32151-80	Ring - Push On	8	34	2
322-14	Screw - Hex. Hd.	4	30	2	340-4	Fitting - Hyd.	6	19	4
323-6	Screw - Hex. Hd.	4	33	6	340-6	Fitting - Hyd.	6	3	4
323-9	Screw - Hex. Hd.	9	2	2	354-115	Fitting - Hyd.	6	13	2
323-9	Screw - Hex. Hd.	2	54	1	354-116	Fitting - Hyd.	6	15	2
324-5	Screw - Hex. Hd.	4	44	4	354-117	Fitting - Hyd.	6	34	2
325-11	Screw	6	46	8	354-118	Fitting - Hyd.	6	26	2

*Not Illustrated

PRODUCT CHANGES

In an effort to make improvements available to TORO owners as quickly as possible, minor changes are incorporated into Toro's products from time to time that do not become immediately shown in the Parts Catalog. If such a change has been made in your unit, which is not reflected in your manual, see your TORO Distributor or his Authorized TORO Service Dealer for information and part numbers.

IDENTIFICATION AND ORDERING

MODEL AND SERIAL NUMBERS

The ProLine Mid Size has two identification numbers; a model number and a serial number. The two numbers are stamped on a plate which is located on the main frame. In any correspondence concerning the ProLine Mid Size, supply model and serial numbers to assure that correct information and replacement parts are obtained.

To order replacement parts from an Authorized TORO Service Dealer, supply the following information:

1. Model and serial number of the ProLine Mid Size.
2. Part number, description, and the quantity of part(s) desired.

NOTE: Do not order by reference number if a parts catalog is being used; use the PART NUMBER.

TABLE OF CONTENTS

Description	Page	Description	Page
Frame, Engine, Fuel Tank, Clutch & Cooler Assembly	1-2	Optional Equipment	
Clutch Assembly No. 54-3200	3	36" Cutting Unit	Model No. 30136
Hydraulic Pump & Linkage Assembly	4	37" Recycler Deck	Model No. 30137
Hydraulic Pump Assembly	5	44" Cutting Unit	Model No. 30144
Wheel Assembly & Hydraulic Components	6	48" Recycler Deck	Model No. 30148
Traction Drive Motor (Torquemotor)	7	52" Cutting Unit	Model No. 30152
Handle/Control Panel Assembly	8	62" Cutting Unit	Model No. 30162
Battery Assembly	9	36" Deck Bag Kit	Model No. 30125
Electrical Schematic	10	37" Deck (Cloth Bag) Bag Kit	Model No. 30129
Hydraulic Schematic	11	37" Deck (Steel Hopper) Bag Kit ..	Model No. 30130
Engine Kohler Model No. CV14 S-1429	12-21	44"/52" Deck Bag Kit	Model No. 30128
Numerical Parts Index	22	2"-5" HOC Kitd	Part No. 84-5010
		Front Weight Kit-36"/37" Deck ..	Part No. 80-3350
		Standard Sulky	Model No. 30122
		Steerable Sulky	Model No. 30123