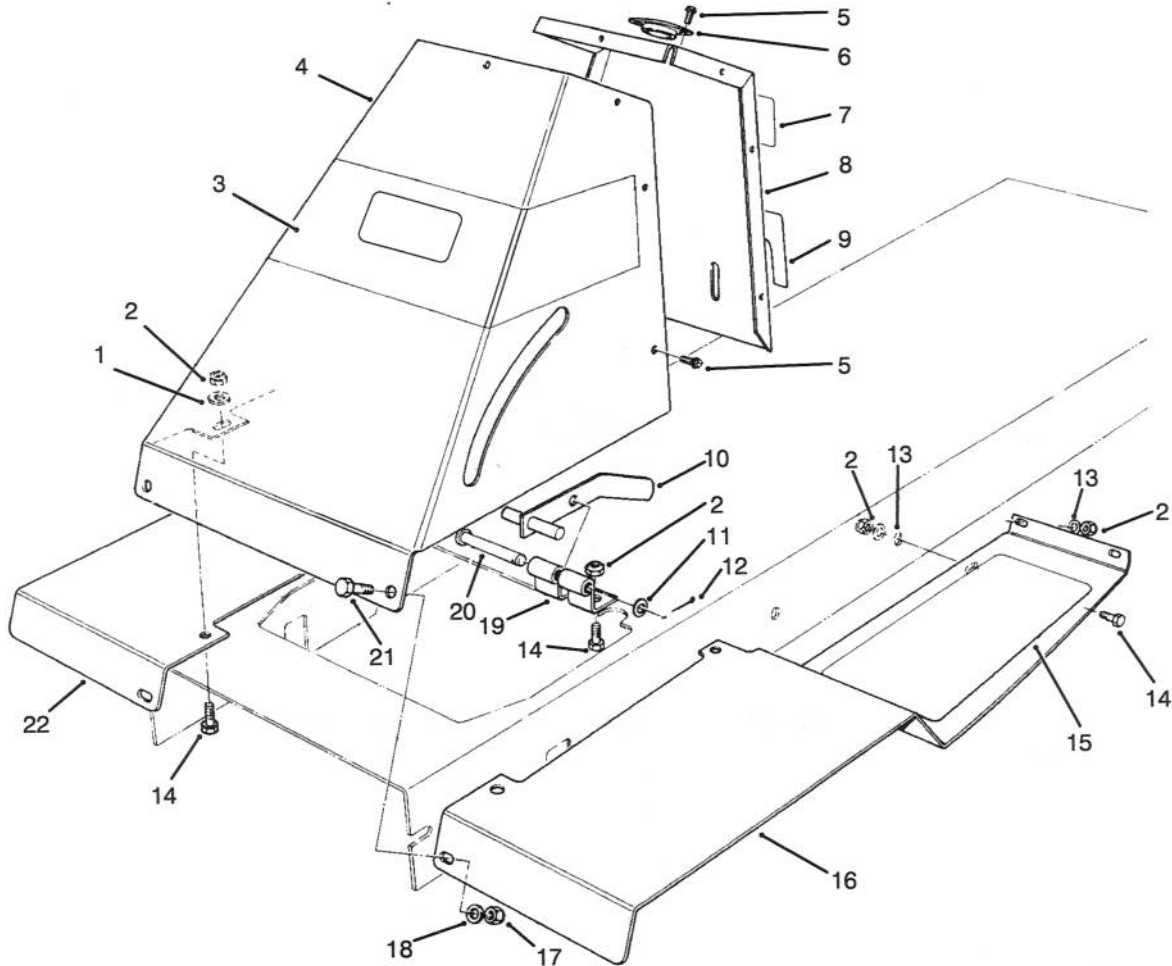




MODEL NO. 70080-4900001 & UP
MODEL NO. 70120-4900001 & UP

**PARTS
CATALOG**

WHEEL HORSE®
10-32 & 12-32 RIDING MOWER



C-1933

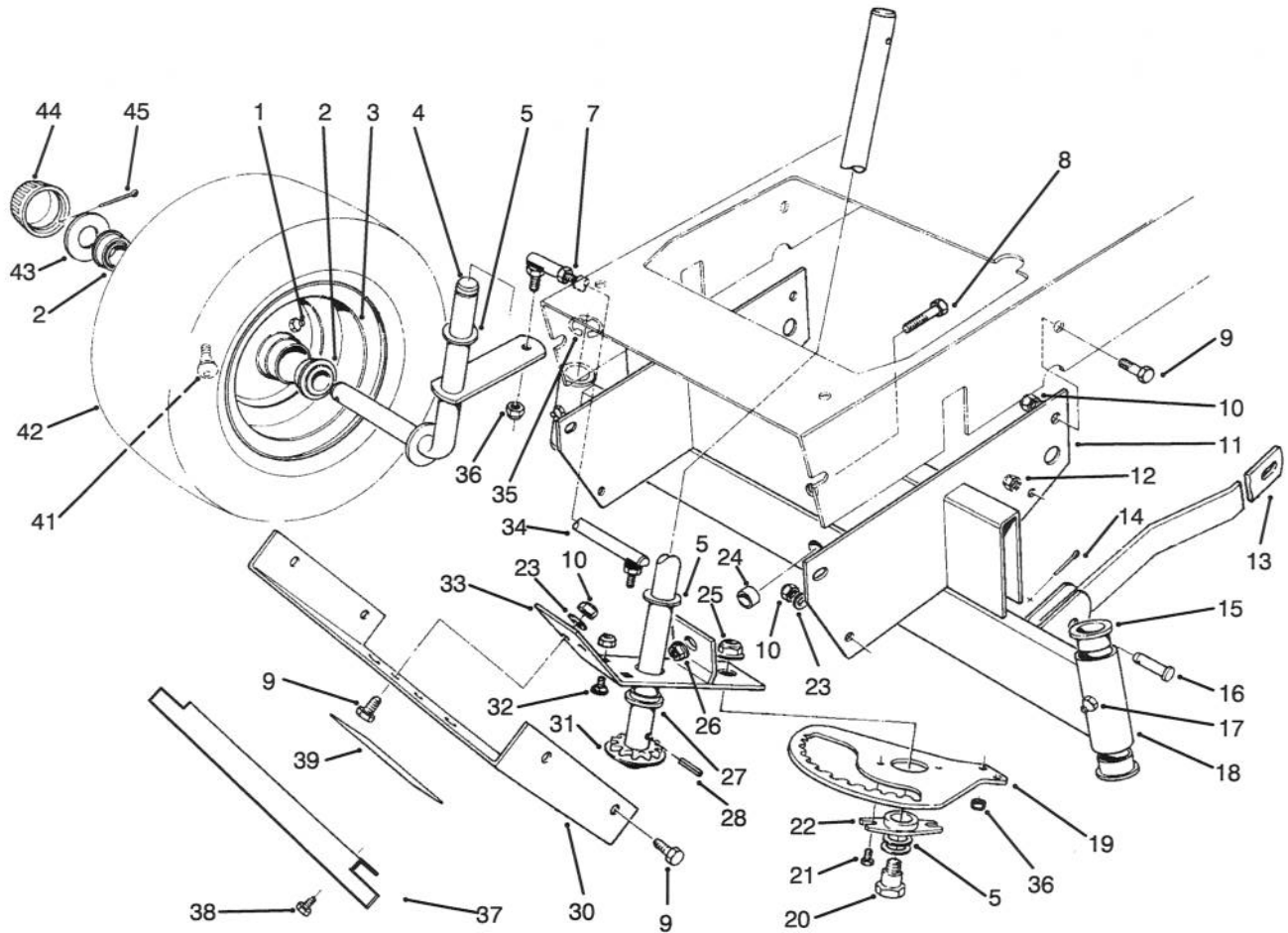
FRONT TOWER ASSEMBLY

Ref. No.	Part No.	Description	No. Used	Ref. No.	Part No.	Description	No. Used
1	3256-35	Washer - Flat	4	14	322-5	Screw - Cap Hex. Hd.	10
2	3296-29	Nut - Lock	14	15	92-7975	Tread - Foot L.H.	1
3	92-7987	Decal - Recycler	1	*	92-7974	Tread - Foot R.H.	1
4	56-7130	Tower - Front	1	16	47-0940	Footrest - L.H.	1
5	32104-76	Screw - Self Tap Acorn Hd.	9	17	3296-42	Nut - Lock	2
6	56-7170	Guide - Shaft, Steering	1	18	3256-22	Washer - Flat	2
7	79-0370	Decal - Danger	1	19	47-2060	Bracket - Brake, Parking	1
8	56-7140	Tower - Rear	1	20	283-52	Pin - Clevis	1
9	56-7810	Decal - Brake, Parking	1	21	321-4	Screw - Cap Hex. Hd.	2
10	47-1290	Brake - Parking	1	22	47-0930	Footrest - R.H.	1
11	3256-24	Washer - Flat	1	*	12-8829	Loose Parts	1
12	3272-6	Pin - Cotter	1	*	12-8819	Loose Parts	1
13	3256-23	Washer - Flat	8			(Includes Steering Wheel)	1

*Not Illustrated

© The TORO Company -1994
All Rights Reserved

TPS



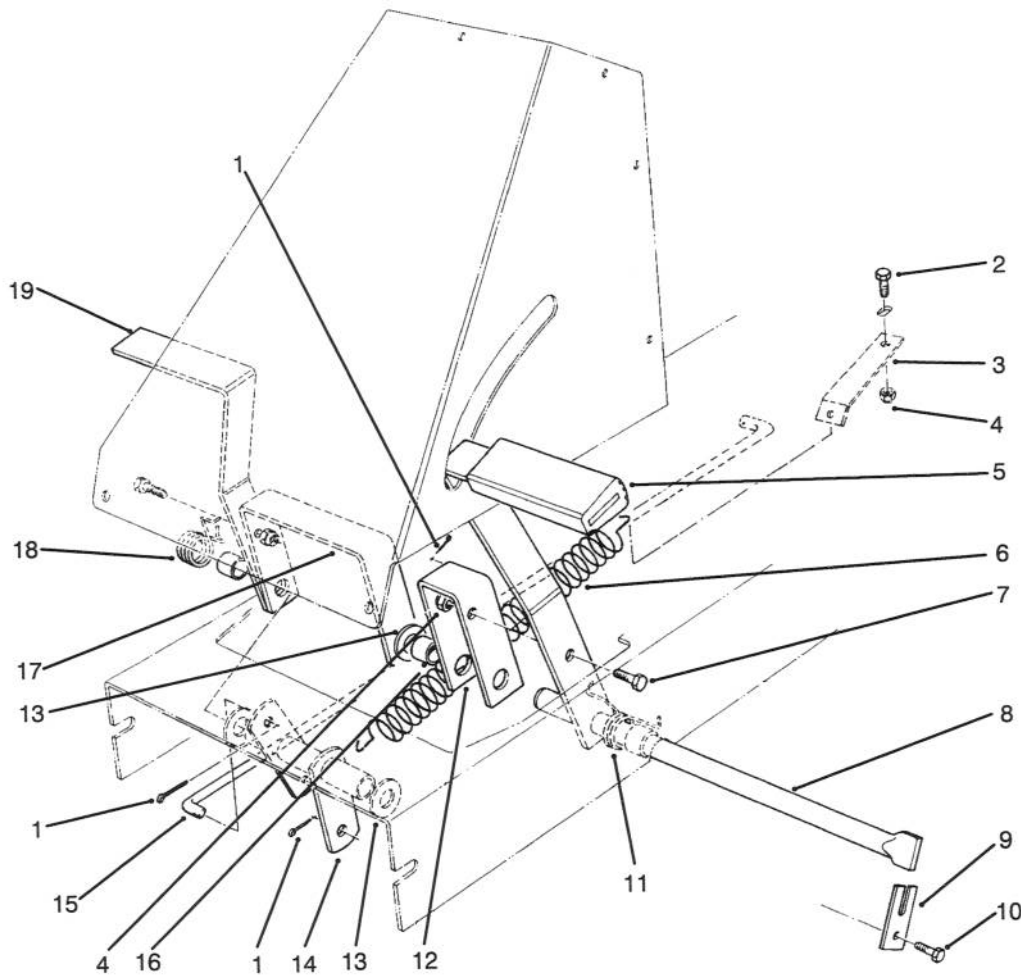
C-0438B

FRONT AXLE ASSEMBLY

Ref. No.	Part No.	Description	No. Used	Ref. No.	Part No.	Description	No. Used
1	302-5	Fitting - Grease	2	24	28-0380	Spacer - Axle, Front	1
2	251-210	Bearing	4	25	32128-21	Nut - Lock, Flange Hd.	1
3	217-80	Rim	2	26	32128-23	Nut - Lock, Flange Hd.	1
4	47-0600	Spindle - R.H.	1	27	47-0700	Bearing - Flange	1
*	47-0590	Spindle - L.H.	1	28	32121-9	Pin - Roll	1
5	3-6498	Washer - Thrust	5	30	56-7180	Cover - Front	1
7	3220-2	Nut - Hex. Jam	1	31	56-7500	Shaft - Steering	1
8	325-6	Screw - Cap Hex. Hd.	1	32	3230-18	Bolt - Carriage	2
9	322-5	Screw - Cap Hex. Hd.	8	33	56-7470	Bracket - Rack, Steering (Incl. Ref. #27)	1
10	3296-29	Nut - Lock	8	34	47-0610	Tie Rod - Adjustable (Incl. Ref. #7)	1
11	47-0760	Support - Axle, Front	1	*	80-2460	Tie Rod - Fixed	1
12	3296-8	Nut - Lock	1	35	32151-48	Ring - Retaining, External	2
13	47-0010	Arm - Suspension, Front	2	36	3296-4	Nut - Lock	4
14	3272-6	Pin - Cotter	2	37	92-0876	Guard - Front	1
15	27-9080	Bearing - Flange	4	38	32144-14	Screw - Thread Forming	2
16	283-2	Pin - Clevis	2	39	92-7989	Decal - Important	1
17	302-49	Fitting - Grease	2	41	237-27	Valve Stem w/Cap	2
18	80-2430	Axle - Front (Incl. Ref. #15 & 17)	1	42	231-116	Tire	2
19	80-2450	Rack - Steering	1	43	28-2480	Washer	2
20	56-7530	Bolt - Shoulder	1	44	61-9780	Cap - Hub	2
21	32144-4	Screw - Special	2	45	3272-12	Pin - Cotter	2
22	56-7520	Bushing - Sector	1	†	232-44	Tube - Inner	2
23	3256-23	Washer - Flat	6				

*Not Illustrated

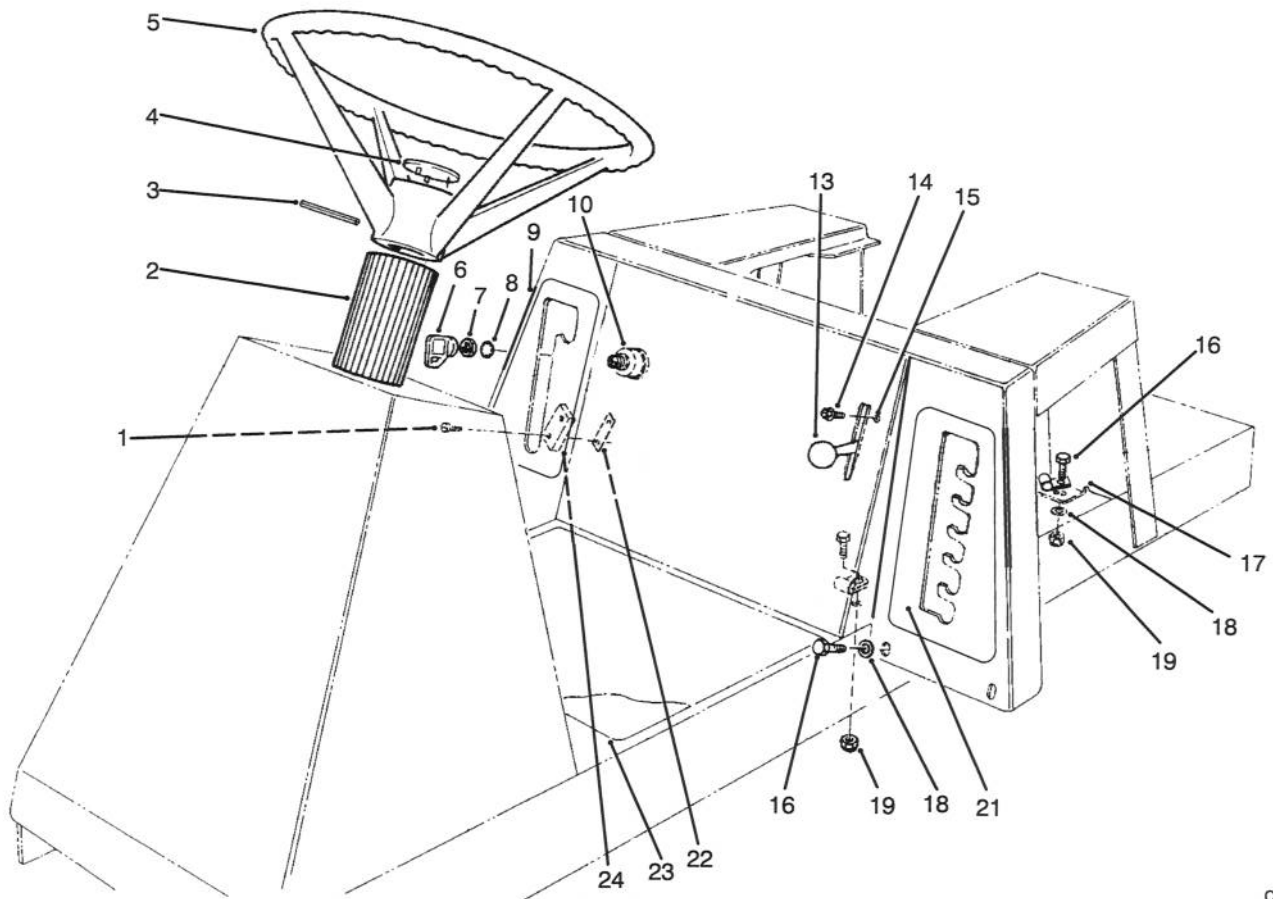
†Service Replacement Part



C-0439A

BRAKE & CLUTCH ASSEMBLY

Ref. No.	Part No.	Description	No. Used	Ref. No.	Part No.	Description	No. Used
1	3272-6	Pin - Cotter	3	11	56-7070	Spring - Torsion, Clutch	1
2	322-5	Screw - Cap Hex. Hd.	1	12	47-0560	Bracket - Clutch, Pedal	1
3	56-7240	Bracket - Retaining, Spring	1	13	3256-27	Washer - Flat	3
4	3296-29	Nut - Lock	3	14	56-7650	Tube - Pivot	1
5	65-2920	Pad - Pedal, Foot	2	15	56-7570	Rod - Engagement	1
6	62-3930	Spring - Extension	1	16	47-0570	Spacer - Pedal	3
7	322-5	Screw - Cap Hex. Hd.	2	17	47-0550	Bracket - Brake, Pedal	1
8	47-0770	Shaft - Pivot, Pedal	1	18	56-7080	Spring - Torsion, Brake	1
9	47-0780	Retainer - Shaft	1	19	47-0540	Pedal	2
10	321-4	Screw - Cap Hex. Hd.	1				

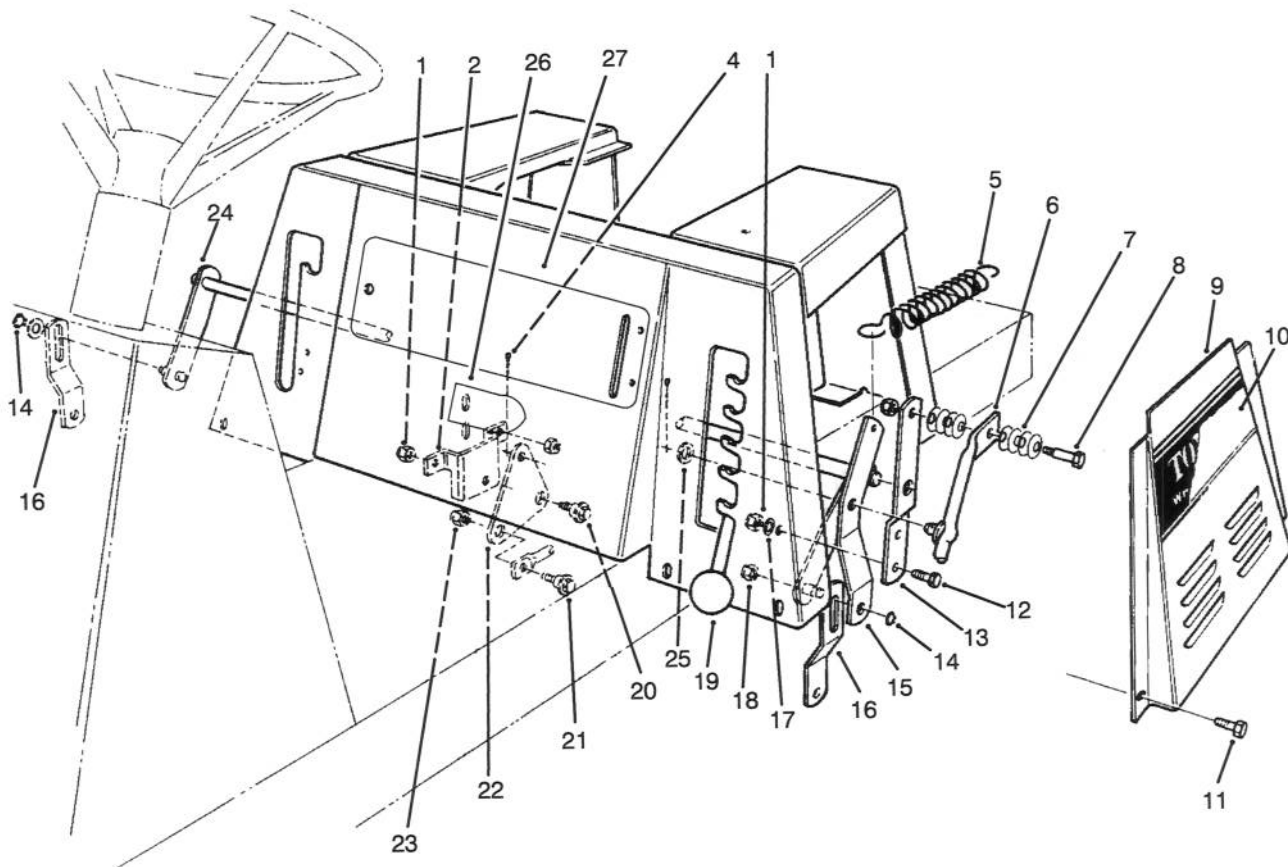


C-1934

STEERING WHEEL, SWITCHES & DECALS

Ref. No.	Part No.	Description	No. Used
1	147665	Screw - Phillips Head	2
2	66-6740	Cover - Shaft, Steering	1
3	32121-78	Pin - Roll	1
4	92-7990	Insert - Wheel, Steering	1
5	49-3242	Assy. - Wheel, Steering (Incl. Ref. #4)	1
6	63-8360	Key	1
7	218-461	Nut - Lock	1
8	3254-5	Washer - Lock, Int. Tooth	1
9	92-7244	Decal - Deck Engage	1
10	23-0660	Switch - Ignition (Incl. Ref. #6-8)	1

Ref. No.	Part No.	Description	No. Used
13	233-25	Knob	1
14	32104-76	Screw - Self-Tapping	2
15	92-0890	Control - Throttle (Incl. Ref. #13)	1
16	322-5	Screw - Cap Hex. Hd.	8
17	2412-68	Clamp	2
18	3256-23	Washer - Flat	7
19	3296-29	Nut - Lock	4
21	92-7245	Decal - H.O.C.	1
22	3290-354	Nut - Double	1
23	76-1090	Decal - Instructions	1
24	88-9931	Switch - Micro	1

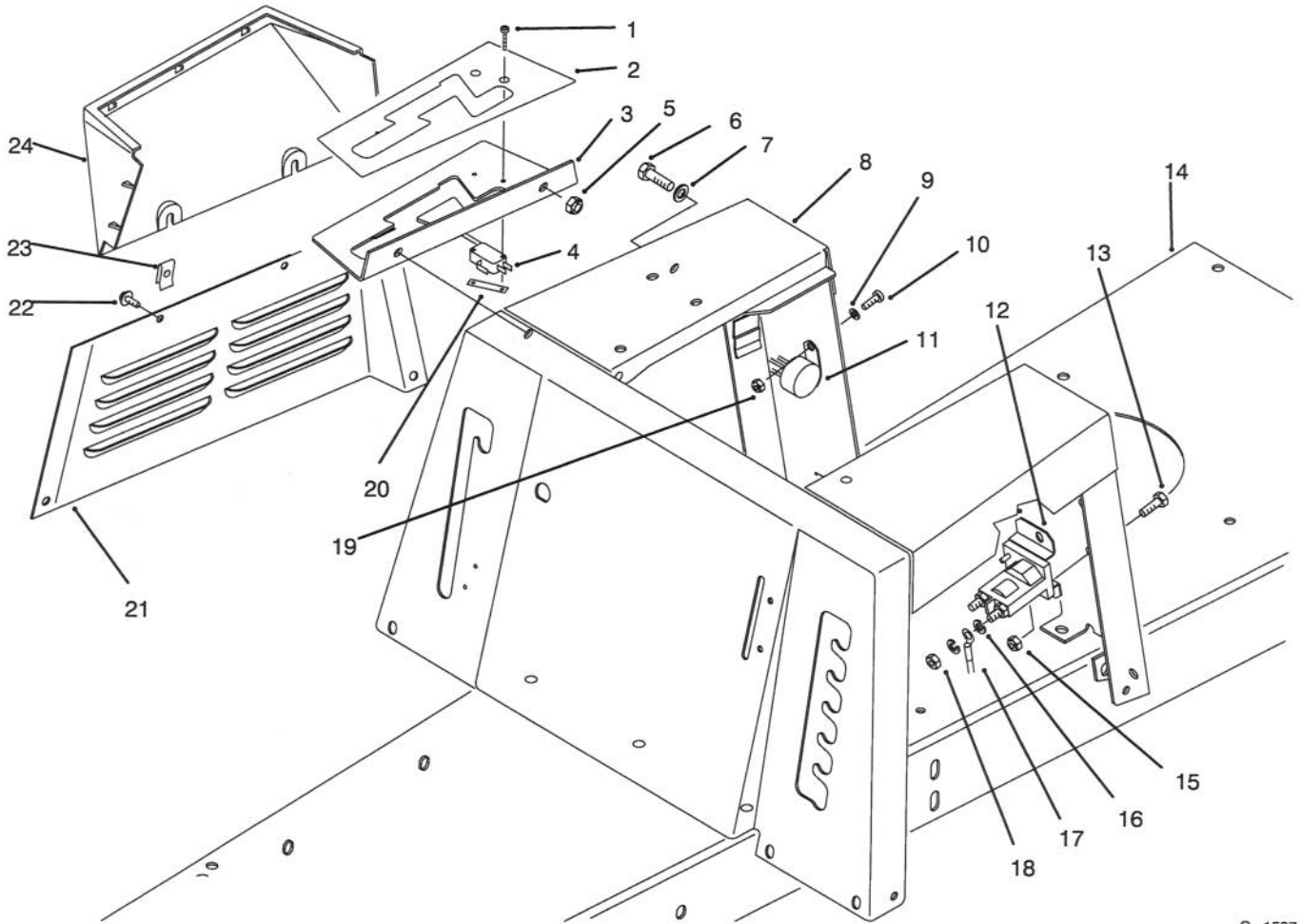


C-1935

LINKAGE ASSEMBLY

Ref. No.	Part No.	Description	No. Used
1	3296-29	Nut - Lock	7
2	80-2310	Bracket - Bell Crank Mount	1
4	3272-6	Pin - Cotter	2
5	62-3930	Spring - Extension	1
6	47-1850	Lever - Height-of-Cut	1
7	3290-413	Washer - Belleville	8
8	28-0540	Bolt - Shoulder	1
9	92-0878	Panel L.H. - Base, Seat	1
10	92-7986	Decal - L.H. (Model 70120)	1
10	92-7985	Decal - L.H. (Model 70080)	1
11	321-4	Screw - Cap Hex. Hd.	4
12	322-5	Screw - Cap Hex. Hd.	2
13	47-1840	Bracket - Height-of-Cut	1
14	32151-61	Ring - Retaining	2

Ref. No.	Part No.	Description	No. Used
15	80-2320	Bracket - H.O.C., Engage	1
16	63-5830	Link - Suspension, Deck	2
17	3256-23	Washer - Flat	4
18	3296-42	Nut - Lock	1
19	233-48	Knob	1
20	19-1470	Bolt - Shoulder	1
21	65-5670	Bolt - Shoulder	1
22	80-2360	Crank - Bell, Deck Engage	1
23	3296-8	Nut - Lock	1
24	56-7400	Arm - Lever, H.O.C.	1
25	3256-26	Washer - Flat	1
26	76-1340	Decal - Made In USA	1
27	92-7243	Decal - Control Panel	1

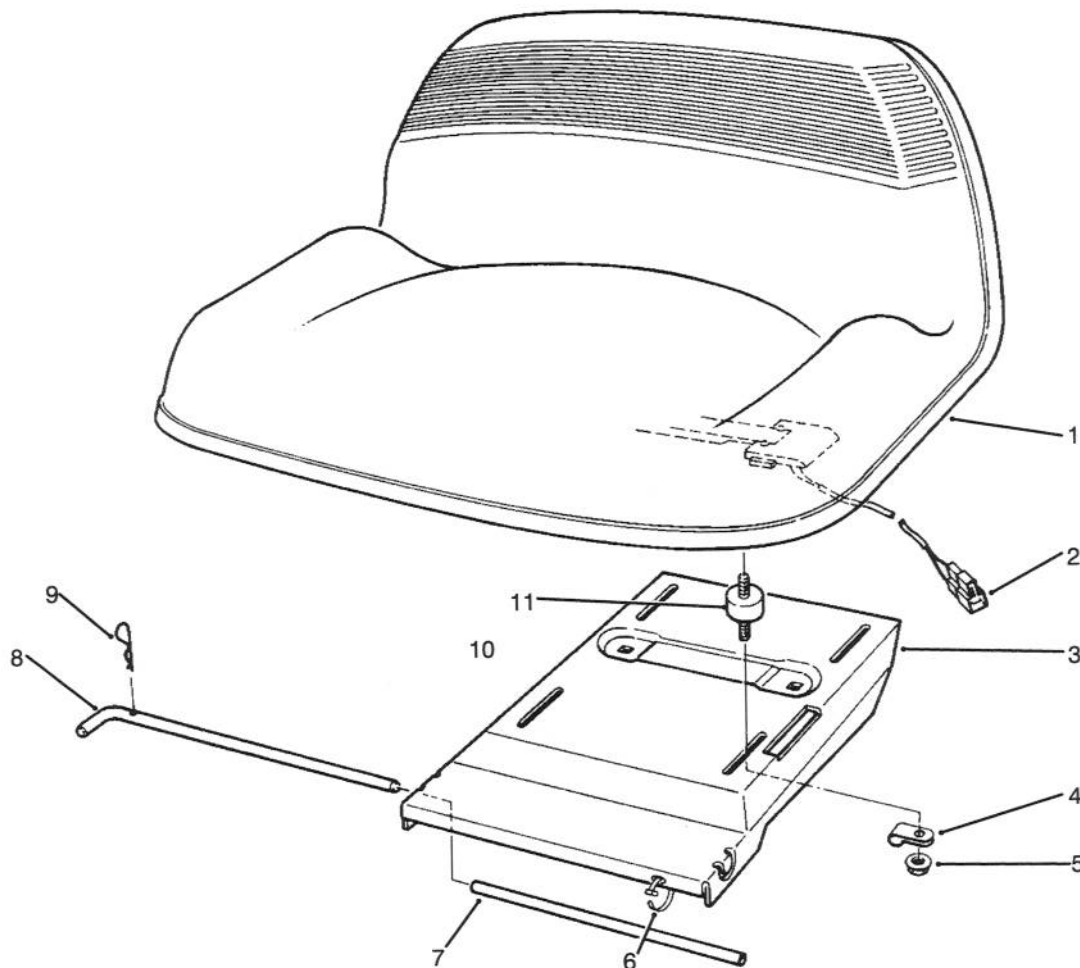


C-1587

SEAT BODY & SIDE PANEL ASSEMBLY

Ref. No.	Part No.	Description	No. Used
1	147665	Screw - Phillips Hd.	2
2	92-1751	Decal - Shift Pattern	1
3	92-0895	Gate - Shift	1
4	88-9930	Switch - Micro, Short	1
5	3296-29	Nut - Lock	2
6	322-5	Screw - Cap Hex. Hd.	2
7	3256-23	Washer - Flat	2
8	92-0866	Body W.A. - Seat Support	1
9	3256-14	Washer - Flat	1
10	3290-134	Screw - Machine	1
11	28-7890	Module - Interlock	1
12	47-1910	Solenoid	1

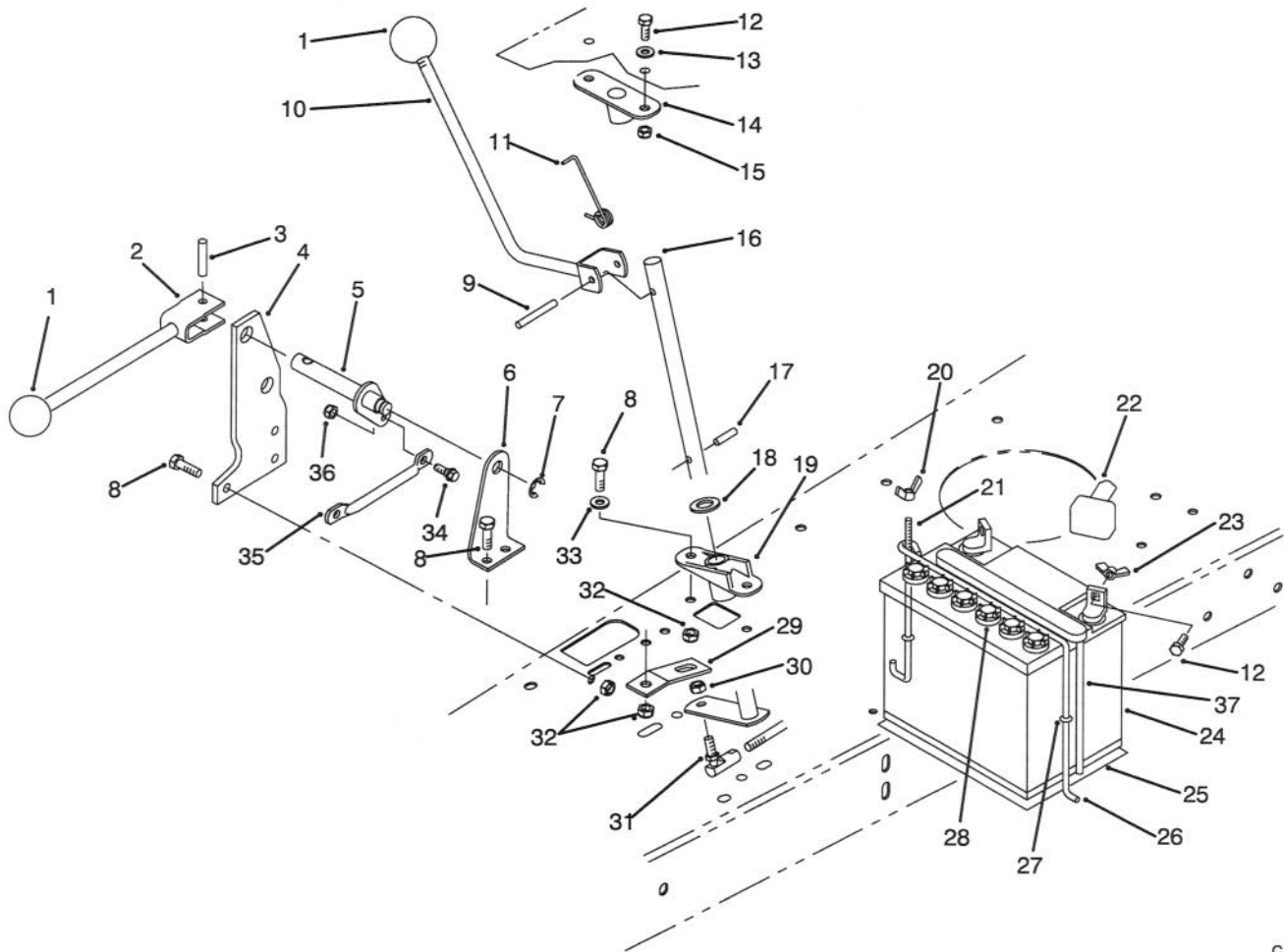
Ref. No.	Part No.	Description	No. Used
13	321-4	Screw - Cap Hex. Hd.	2
14	92-0860	Frame	1
15	3296-42	Nut - Lock	2
16	3253-3	Washer - Lock	4
17	56-7670	Cable - Positive	1
18	3218-1	Nut - Jam	2
19	3296-2	Nut - Lock	1
20	3290-354	Nut - Double	1
21	92-0877	Panel - Seat Base, R.H.	1
22	32144-112	Screw - Sems	2
23	3290-191	Nut - Speed	2
24	88-9800	Cover - Gate, Shift	1



C-1936

SEAT ASSEMBLY

Ref. No.	Part No.	Description	No. Used	Ref. No.	Part No.	Description	No. Used
1	88-3950	Assembly - Seat	1	6	3290-378	Tie - Cable	1
2	38-1420	Switch - Interlock	1	7	63-5670	Tube - Bumper, Seat Rod	1
3	63-5540	Base - Seat	1	8	80-2620	Rod - Base, Seat	1
4	2412-68	Clamp - Wire	1	9	3290-307	Pin - Cotter, Hair	1
5	32128-20	Nut - Flange Hd.	4	11	62-5480	Isolator - Seat	4

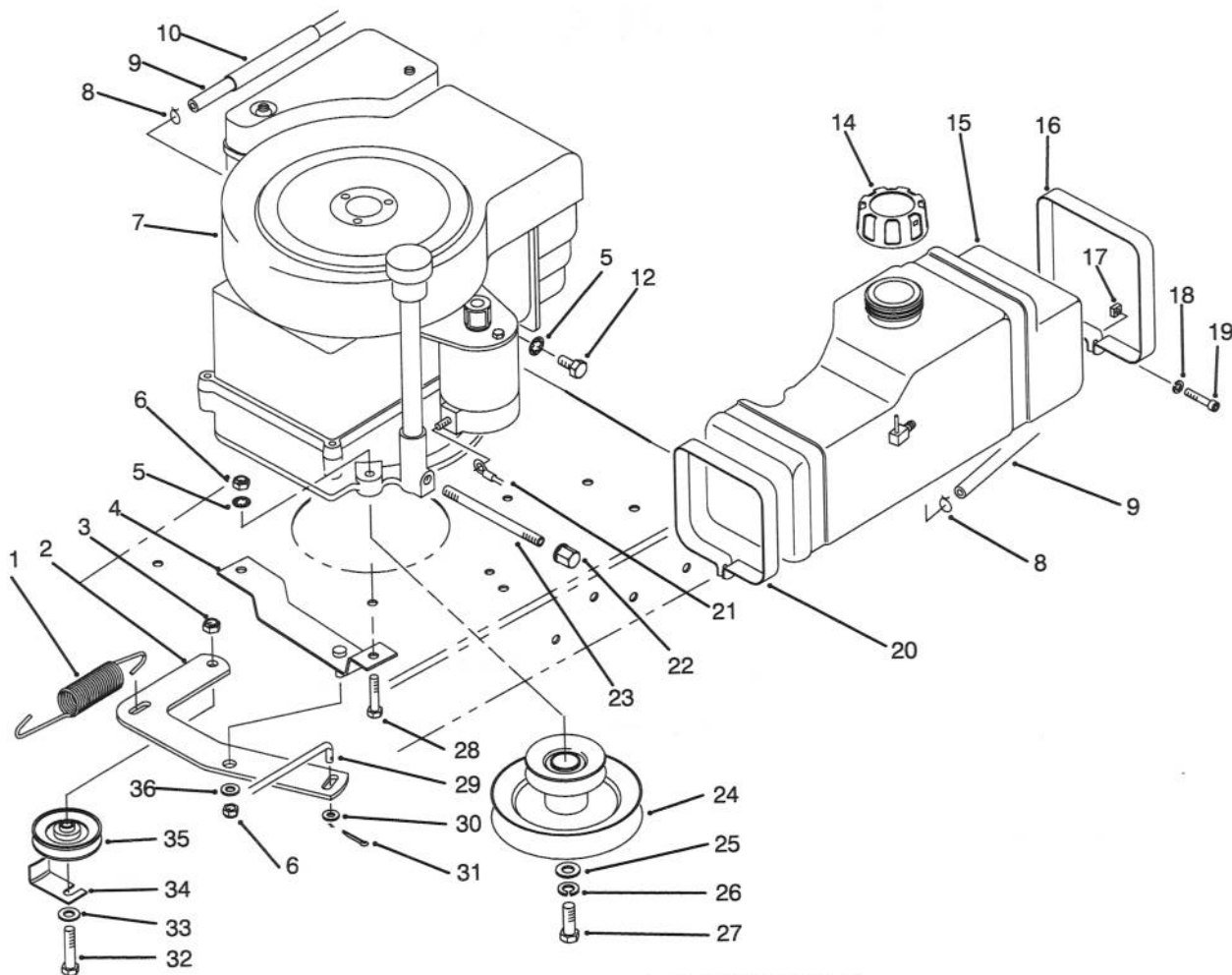


C-1601

TRANSMISSION LINKAGE ASSEMBLY

Ref. No.	Part No.	Description	No. Used
1	233-48	Knob	2
2	80-2400	Lever W.A. - Engage	1
3	32121-25	Pin - Roll	1
4	80-2350	Pivot - Outer	1
5	80-2370	Shaft W.A. - Pivot	1
6	80-2340	Bracket - Pivot, Inner	1
7	32120-47	Ring - Retaining	1
8	322-5	Screw - Cap Hex. Hd.	4
9	32121-78	Pin - Roll	1
10	92-0884	Lever W.A. - Shaft	1
11	92-0894	Spring - Torsion	1
12	321-4	Screw - Cap Hex. Hd.	2
13	3256-22	Washer - Flat	2
14	92-0888	Support - Shift, Upper	1
15	3296-42	Nut - Lock	2
16	92-0891	Shaft W. A. - Shift	1
17	32121-16	Pin - Roll	1
18	257-11	Washer	1
19	92-0887	Support - Shift, Lower	1

Ref. No.	Part No.	Description	No. Used
20	32103-12	Nut - Wing	1
21	56-7720	Post - Battery	1
22	28-8080	Boot - Terminal	1
23	32103-22	Nut - Wing	2
24	80-2600	Battery - 12 Volt (Incl. Ref. #28 & 37)	1
25	62-4300	Pad - Battery	1
26	56-7710	Hold Down - Battery	1
27	237-143	O-Ring	2
28	218-560	Cap - Battery	6
29	92-0896	Retainer - Spring	1
30	3296-4	Nut - Lock	1
31	2411-32	Ball Joint	1
32	3296-29	Nut - Lock	4
33	3256-23	Washer - Flat	2
34	65-5670	Screw - Shoulder	1
35	80-2330	Link - Bell Crank	1
36	3296-8	Nut - Lock	1
37	56-2540	Tube - Vent, Battery	1



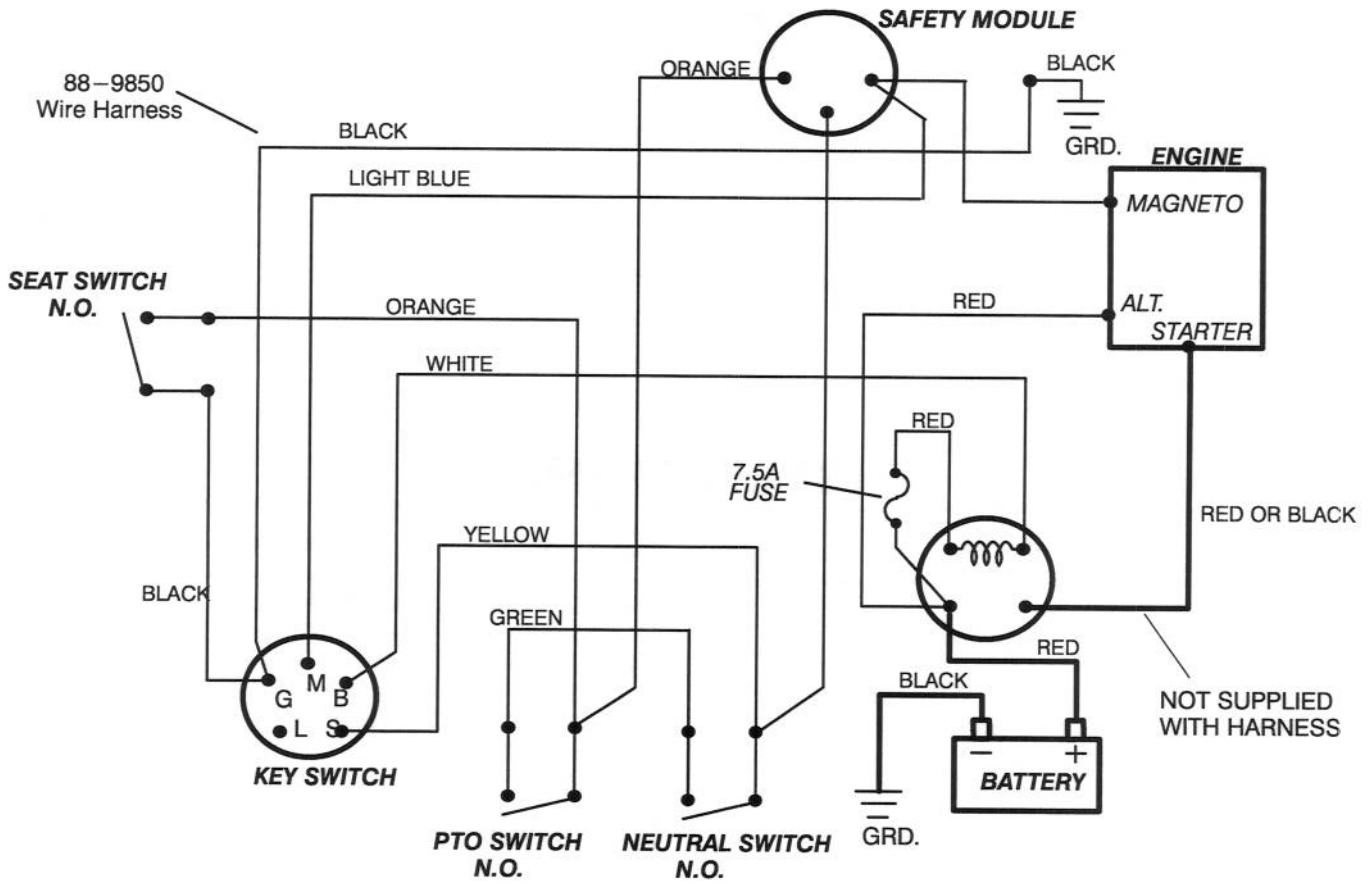
C-1937

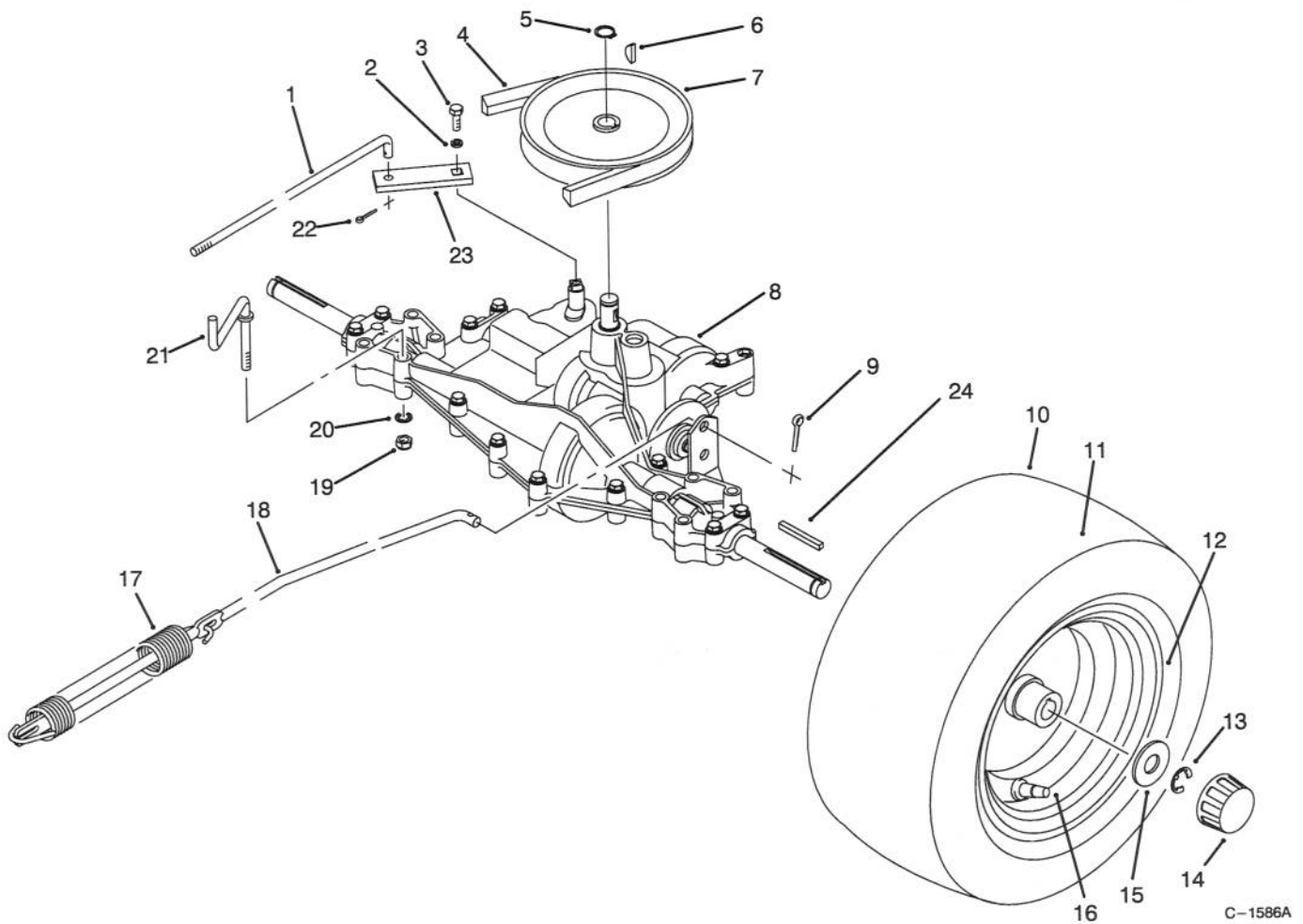
ENGINE ASSEMBLY

Ref. No.	Part No.	Description	No. Used
1	92-0879	Spring	1
2	92-0883	Plate - Mounting, Idler	1
3	3296-39	Nut - Lock	1
4	92-0881	Bracket W.A. - Traction	1
5	3254-2	Washer - Lock, Int. Tooth	4
6	3296-29	Nut - Lock	2
7		Engine - 10 H.P. Model 70080 (28B707-0126-01)	1
7		Engine - 12 H.P. Models 70120 (286707-0119-01)	1
8	2412-98	Clamp - Hose	2
9	47-2981	Hose - Fuel Line Model 70080	1
9	47-2961	Hose - Fuel Line Model 70120	1
10	62-5490	Support - Fuel Line	1
12	32144-14	Screw	2
14	55-3570	Cap - Fuel	1
15	56-7050	Tank - Fuel	1

Ref. No.	Part No.	Description	No. Used
16	57-4060	Retainer - Front	1
17	32107-11	Nut - Square	2
18	3253-3	Washer - Lock	2
19	3274-51	Screw - Hex. Socket Hd.	2
20	57-4070	Retainer - Rear	1
21	56-7670	Cable - Battery, Positive	1
22	288-10	Cap - Pipe	1
23	289-19	Nipple - Pipe	1
24	92-0873	Pulley - Engine	1
25	3256-25	Washer - Flat	1
26	3253-6	Washer - Lock	1
27	62-3760	Screw - Cap Hex. Hd.	1
28	322-7	Screw - Cap Hex. Hd.	1
29	92-0871	Rod - Traction	1
30	3256-22	Washer - Flat	1
31	3272-6	Pin - Cotter	1
32	323-9	Screw - Cap Hex. Hd.	1
33	3256-24	Washer - Flat	1
34	12-9020	Retainer - Belt	1
35	12-5820	Pulley - Idler	1
36	3256-57	Washer - Flat	1

ELECTRICAL SCHEMATIC



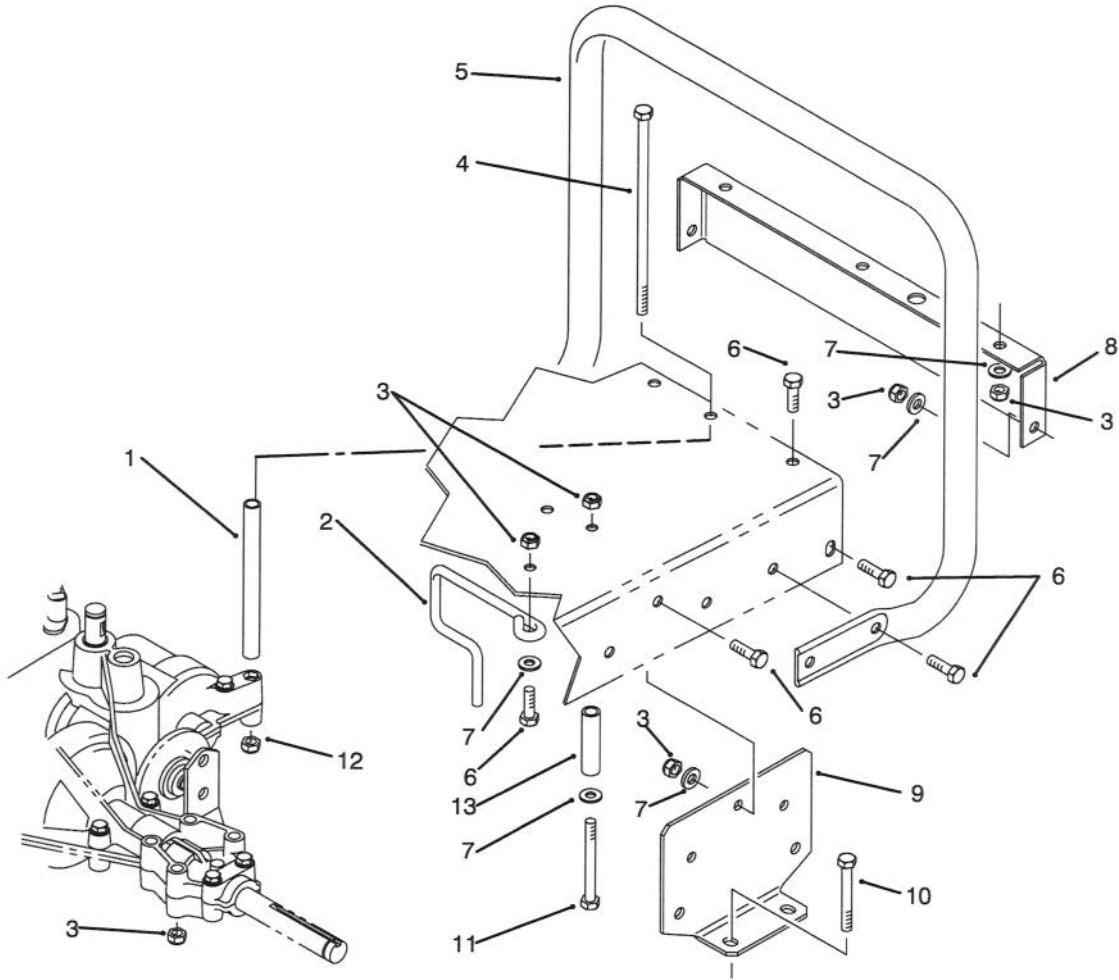


C-1586A

REAR AXLE ASSEMBLY

Ref. No.	Part No.	Description	No. Used
1	92-0889	Link - Shift	1
2	3253-3	Washer - Lock	1
3	329-4	Screw - Cap Hex. Hd.	1
4	92-0870	V-Belt - Traction	1
5	32120-64	Ring - Retaining	1
6	3257-23	Key	1
7	92-0874	Pulley	1
8	92-0862	Transaxle	1
9	3272-16	Pin - Cotter	1
10	231-117	Tire	2
11	232-39	Tube - Inner	2
12	88-9730	Rim	2

Ref. No.	Part No.	Description	No. Used
13	32151-48	Ring - Retaining	2
14	61-9780	Cap - Hub	2
15	28-2480	Washer	2
16	232-27	Stem - Valve	2
17	57-9940	Spring - Brake	1
18	92-0872	Rod - Brake	1
19	3296-29	Nut - Lock	1
20	3254-2	Washer - Lock, Int. Tooth	1
21	92-0899	Guide - Belt, Lower	1
22	3272-6	Pin - Cotter	1
23	92-0880	Arm - Shift, Transaxle	1
24	7-0036	Key - Square	2

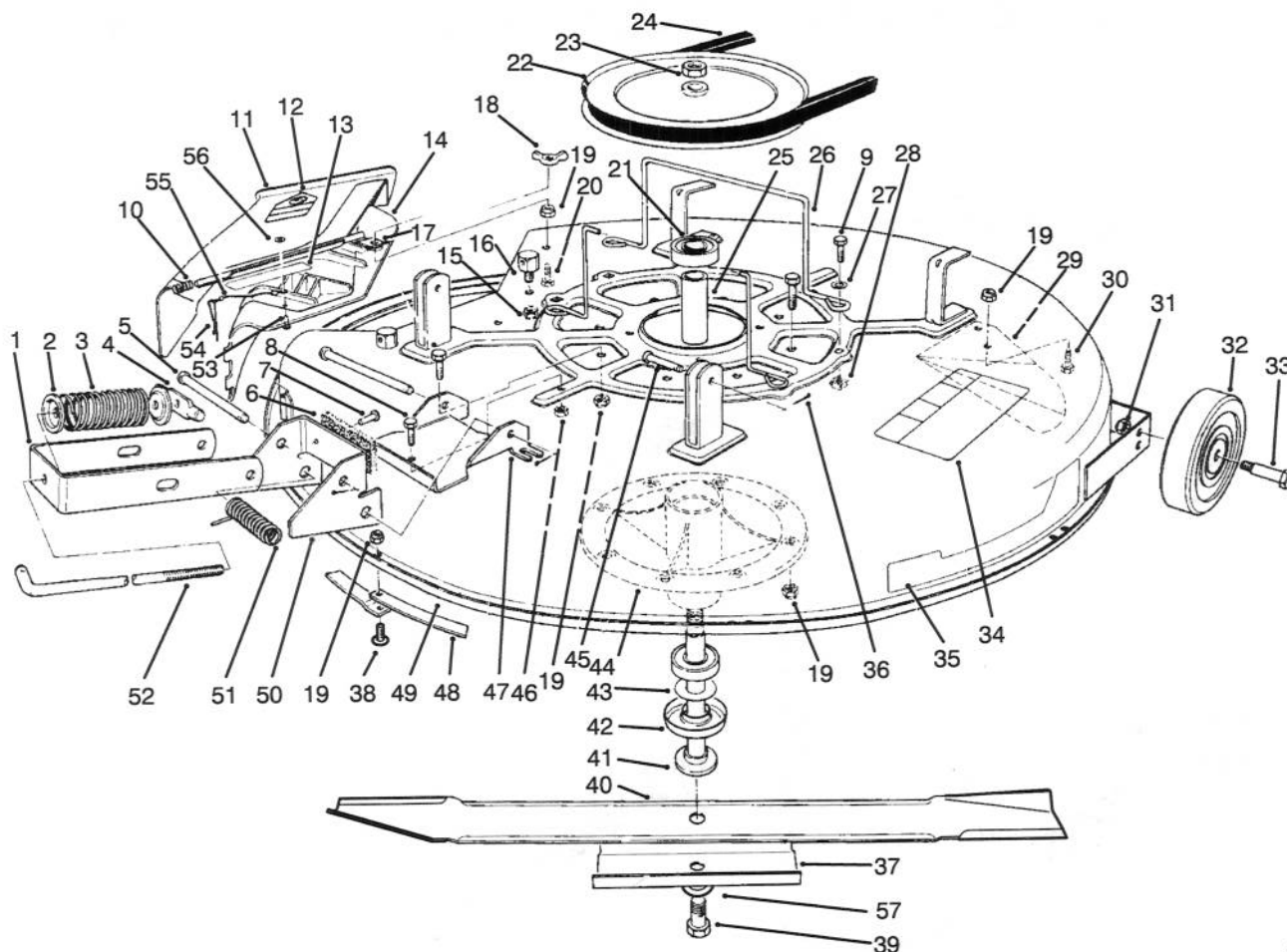


C-1602

STAND BAR ASSEMBLY

Ref. No.	Part No.	Description	No. Used
1	92-0897	Spacer	1
2	92-0898	Guide - Belt	1
3	3296-29	Nut - Lock	17
4	322-50	Screw - Cap Hex. Hd.	1
5	92-0864	Standbar	1
6	322-5	Screw - Cap Hex. Hd.	15
7	3256-23	Washer - Flat	12

Ref. No.	Part No.	Description	No. Used
8	92-0861	Frame - Rear	1
9	92-0865	Support - Axle	2
10	322-12	Screw - Cap Hex. Hd.	4
11	322-14	Screw - Cap Hex. Hd.	2
12	3296-47	Nut - Lock	1
13	76-1560	Spacer	2

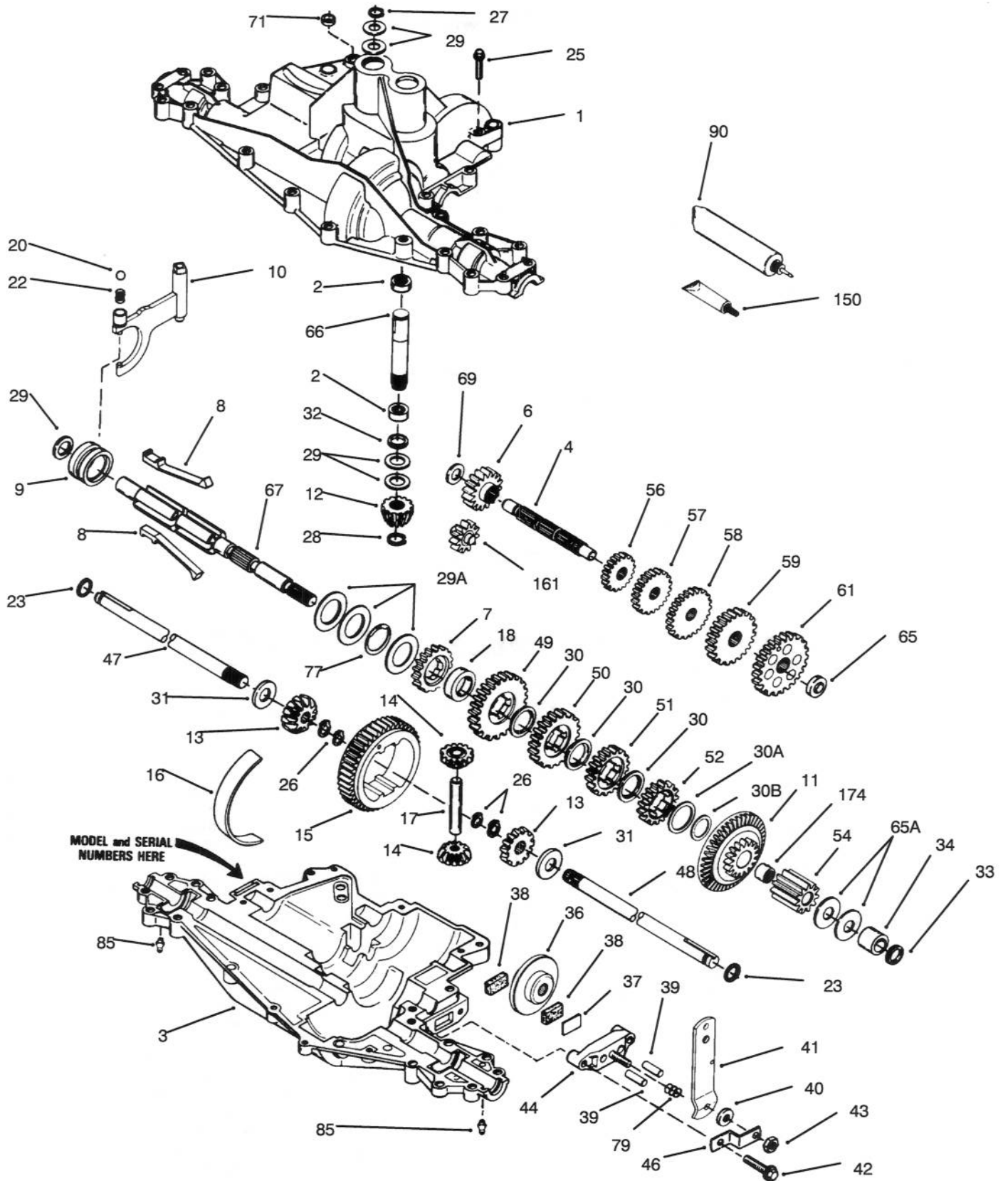


C-0792B

MOWER ASSEMBLY - RECYCLER

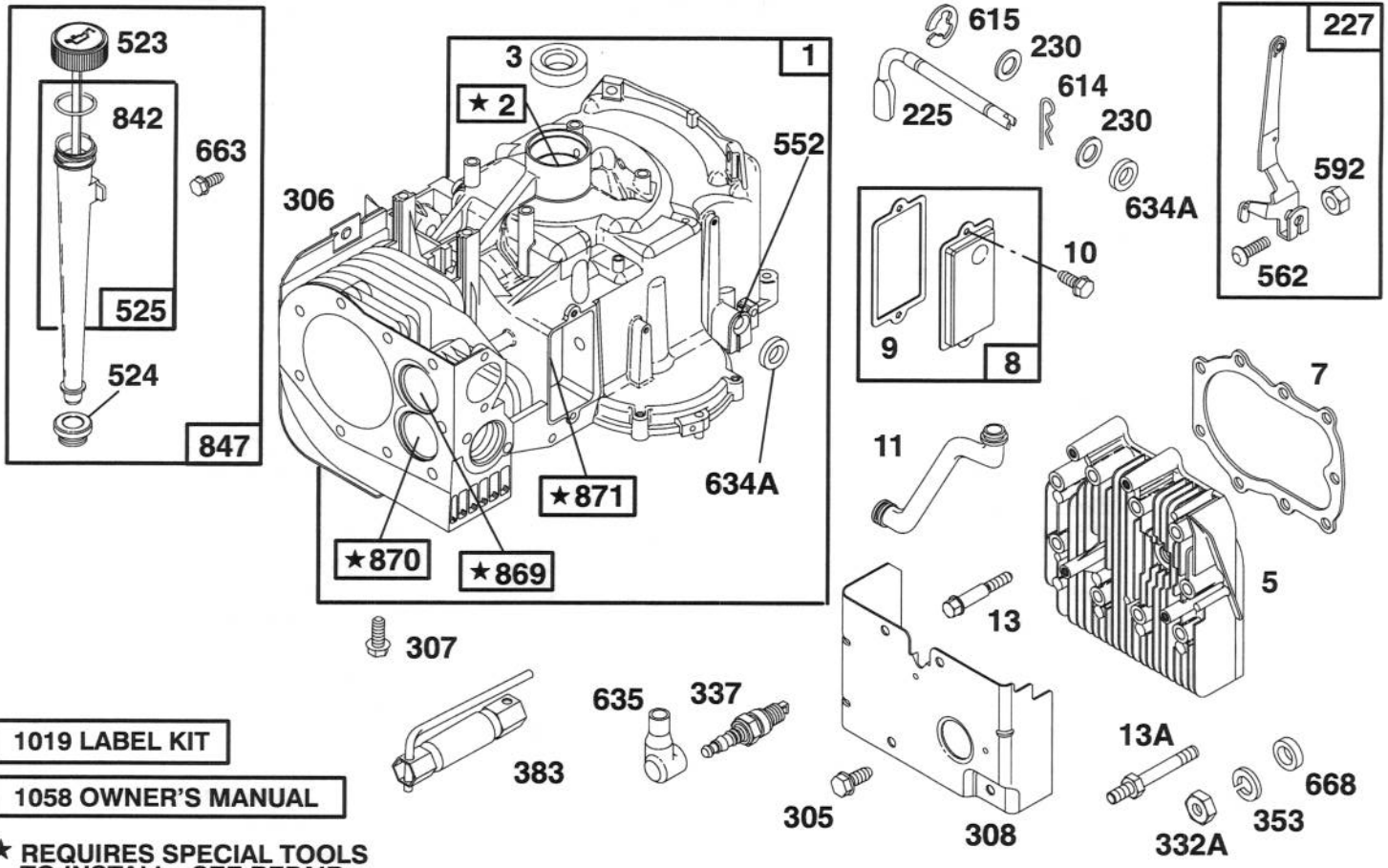
Ref. No.	Part No.	Description	No. Used	Ref. No.	Part No.	Description	No. Used
1	47-1180	Bracket - Engagement	1	29	80-2630	Kicker - 32"	4
2	47-1140	Retainer - Spring, Top	2	30	322-3	Screw - Cap Hex. Hd.	7
3	47-0960	Spring - Compression	1	31	3296-39	Nut - Lock	2
4	47-1200	Shaft - Adjusting	1	32	61-9760	Wheel - Deck	2
5	80-2570	Pin - Clevis	2	33	56-6590	Bolt - Wheel	2
6	80-2550	Pad - Brake	1	34	66-1340	Decal - Danger	1
7	3290-282	Rivet	2	35	92-9521	Decal - Recycler	1
8	321-4	Screw - Cap Hex. Hd.	1	36	3272-6	Pin - Cotter	2
9	322-5	Screw - Cap Hex. Hd.	12	37	80-4570	Stiffener - Blade	1
10	28-8010	Spring - Torsion	1	38	32122-14	Screw - Truss, Phillips Hd.	8
11	44-5930	Assembly - Deflector (Incl. Ref. #12)	1	39	26-0671	Bolt - Blade	1
12	54-9220	Decal - Caution, Deflector	1	40	80-4430	Blade - Recycler	1
13	68-3650	Decal - Warning, Deflector	1	41	80-4350	Shaft - Spindle	1
14	82-6150	Assy. - Cover, Discharge (Incl. Ref. #53-56)	1	42	80-4370	Shield - Bearing	1
15	3296-59	Nut - Lock	1	43	80-4390	Spacer - Hardened	1
16	28-7350	Post - Pivot	1	44	56-7030	Body - Spindle	1
17	83-7010	Brace - Cover, Rear	1	45	283-2	Pin - Clevis	2
18	32103-2	Nut - Wing	1	46	3296-8	Nut - Lock	1
19	3296-29	Nut - Lock	24	47	80-2560	Plate - Deck, Brake Mtg.	1
20	322-6	Screw - Cap Hex. Hd.	1	48	80-4490	Ring - Deck	4
21	251-297	Bearing	2	49	14-9999	Deck - Cutting, Recycler	1
22	80-4470	Pulley	1	50	80-2530	Assembly - Brake (Incl. Ref. #6-7)	1
23	3219-7	Nut - Hex. Hd.	1	51	40-6230	Spring - Torsion	1
24	92-0875	V-Belt	1	52	80-2580	Rod - Adjusting	1
25	83-7020	Spacer - Bearing	1	53	3290-282	Rivet	2
26	60-9730	Guide - Belt	2	54	28-8130	Pin - Chute, Locking	1
27	3256-23	Washer - Flat	4	55	28-8070	Lanyard	1
28	3290-496	Nut - Retainer	4	56	3256-49	Washer - Flat	1
				57	3290-465	Washer - Belleville	1

PEERLESS TRANSAXLE MODEL NO. 915-019



PEERLESS TRANSAXLE MODEL NO. 915-019

Ref. No.	Part No.	Description	No. Used	Ref. No.	Part No.	Description	No. Used
1	772117	Transaxle Cover	1	38	790006	Brake Pad	2
2	780086	Needle Bearing	2	39	786026	Dowel Pin	2
3	770114	Transaxle Case	1	40	792076	Washer	1
4	776300	Countershaft	1	41	790045	Brake Lever	1
6	778281	Spur Gear (16 Teeth)	1	42	792073	Screw	2
7	778122A	Spur Gear (22 Teeth)	1	43	792075	Locknut	1
8	792133	Shift Key	4	44	790025	Brake Pad Holder	1
9	784352	Shift Collar	1	46	786086	Brake Lever Bracket	1
10	784365	Shift Rod & Fork	1	47	774930	Axle (16-3/4" lg.)	1
11	778290	Bevel Gear & Bearing (44/16 Teeth) (Incl. Ref. #174)	1	48	774931	Axle (11-9/16" lg.) (Incl. Ref. #26)	1
12	778262	Bevel Pinion (14 Teeth)	1	49	778124A	Spur Gear (30 Teeth)	1
13	778221	Bevel Gear (16 Teeth)	2	50	778123A	Spur Gear (25 Teeth)	1
14	778068	Differential Pinion	2	51	778122A	Spur Gear (22 Teeth)	1
15	778260	Ring Gear	1	52	778273	Spur Gear (19 Teeth)	1
16	786150	Bearing Strip	1	54	778263	Spur Gear (11 Teeth)	1
17	78139	Drive Pin	1	56	778126A	Spur Gear (20 Teeth)	1
18	786147	Neutral Spacer	1	57	778127A	Spur Gear (25 Teeth)	1
20	792139	Ball (3/8" dia.)	1	58	778128A	Spur Gear (28 Teeth)	1
22	792142	Spring	1	59	778129A	Spur Gear (30 Teeth)	1
23	788061	Seal Ring	2	61	778265	Spur Gear (34 Teeth)	1
25	792073	Screw	17	65	780162	Washer	1
26	792125	Retaining Ring (pkg. of 2)	4	65A	780160	Washer	2
27	792035	Retaining Ring	1	66	776299	Input Shaft (3.522" lg.)	1
28	788040	Retaining Ring	1	67	776352	Shifter & Brake Shaft	1
29	780072	Washer	5	69	780161	Thrust Washer	1
29A	780090	Thrust Washer	3	71	788069	Square Cut Ring	1
30	780108	Washer	3	77	788078A	Inverted Retaining Ring (pkg. of 2)	1
30A	789145	Washer	1	79	792144	Spring	1
30B	780178	Washer	1	90	788067B	Grease (32 oz. btl. Bentonite grease)	1
31	780001	Washer	2	150	510334	Gasket Eliminator (Loctite #515)	1
32	792001	O-Ring	1	161	776302	Reverse Idler Assembly	1
33	788076	O-Ring	1	174	780085	Needle Bearing	1
34	780159	Bushing	1				
36	790071	Brake Disk	1				
37	790007	Brake Pad Plate	1				



ENGINE BRIGGS & STRATTON MODEL 28B707-0126-01

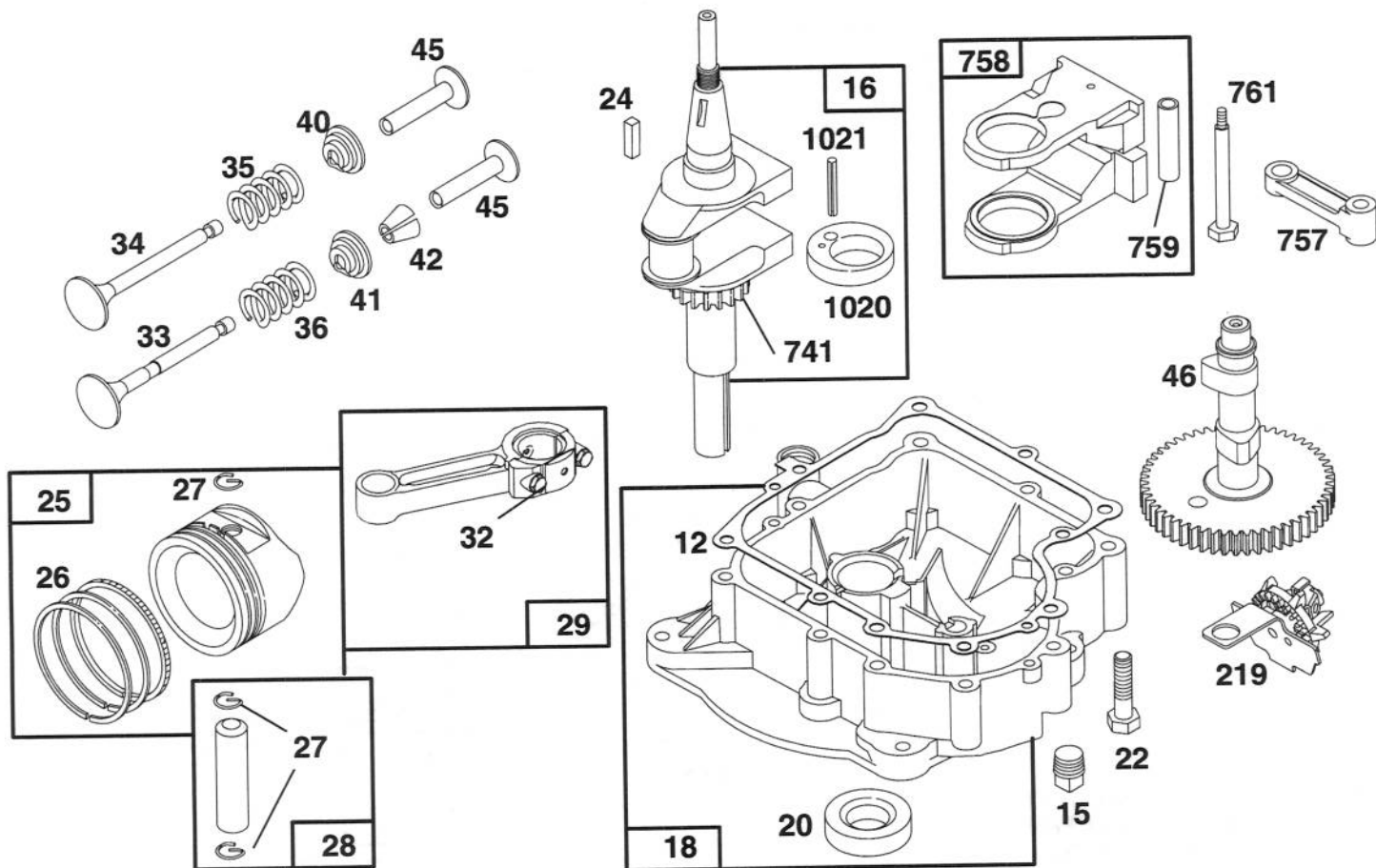
Ref. No.	Part No.	Description	No. Used
1	496413	Cylinder Assembly	
2	399265	Bearing-Cylinder	
★3	391086	Seal-Oil	
5	494240	Head-Cylinder	
★7	271866	Gasket-Cylinder Head	
8	495735	Breather Assembly	
★9	27803	Gasket-Valve Cover	
10	94621	Screw-Sem	
11	281246	Tube-Breather	
13	94622	Screw-Cylinder Head	
13A	94776	Stud-Cylinder Head	
225	231058	Crank-Governor	
227	493935	Lever Assy.-Governor	
230	94742	Washer-Governor Lever	
305	94786	screw-Hex. Head	
306	224545	Shield-Cylinder	
307	94386	Screw-Self Tap	
308	491490	Cover-Cylinder Head	
332A	94314	Nut-Hex.	
337	802592	Plug-Spark	
353	94315	Washer-Lock	
383	89838	Wrench-Spark Plug	

Ref. No.	Part No.	Description	No. Used
523	495229	Cap-Oil Filler	
★524	281370	Seal-Filler Tube	
525	496068	Tube-Oil Filler	
552	231597	Bushing-Gov. Crank	
562	92613	Bolt-Governor Lever	
592	231082	Nut-Hex.	
614	93306	Pin-Cotter	
615	93307	Retainer-E-Ring	
★634A	491323	Seal-Governor	
635	66538	Elbow-Spark Plug	
663	94073	Screw-Hex. Head	
668	231109	Spacer	
★842	270920	Seal-Oil Filler Cap	
847	496367	Fill Group-Oil	
869	261463	Seat-Intake Valve	
870	213316	Seat-Exhaust Valve	
871	261961	Guide-Exhaust Valve	
		Note: 231218 Guide-Intake Valve (Brass)	
1019	491254	Label Kit	
1058	272697	Owner's Manual	

★ Included in Gasket Set-Part No. 494241.

◆ Included in Carburetor Gasket Set-Part No. 494385.

● Included in Carburetor Kit-Part No. 496622.



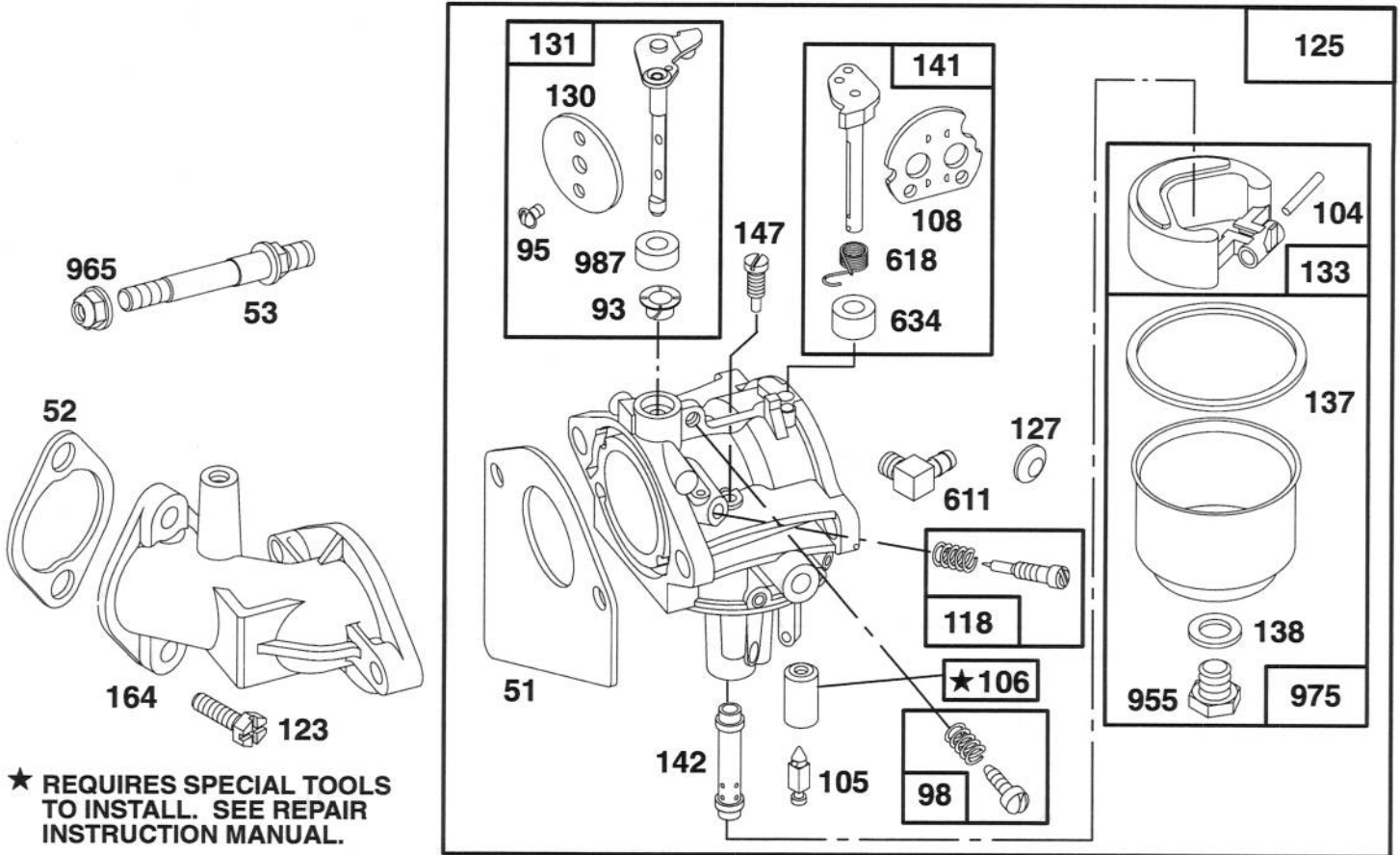
Assemblies include all parts shown in frames.

ENGINE BRIGGS & STRATTON MODEL 28B707-0126-01

Ref. No.	Part No.	Description	No. Used	Ref. No.	Part No.	Description	No. Used
★12	271916	Gasket-Crankcase (.015" Thick)		27	260924	Lock-Piston Pin	
★	271997	Gasket-Crankcase (.005" Thick)		28	299691	Pin-Piston (Standard)	
★	271996	Gasket-Crankcase (.009" Thick)		391286	Pin-Piston (.005" O.S.)		
15	94239	Plug-Oil Drain		29	490348	Rod-Connecting	
16	495162	Crankshaft		490469	Rod-Conn. (.020" U.S.)		
		Note: For Timing Gear Key-Order 94196.		32	94671	Screw-Conn. Rod	
18	494238	Base-Engine		33	262246	Valve-Exhaust	
★20	291675	Seal-Oil		34	262247	Valve-Intake	
22	94624	Screw-Sem		35	65906	Spring-Valve	
24	222698	Key-Flywheel		36	26828	Spring-Valve	
25	394661	Piston Assembly (Standard)		40	221596	Retainer-Intake Valve	
	394662	Piston Assy. (.010" O.S.)		41	292260	Rotocoil-Ex. Valve	
	394663	Piston Assy. (.020" O.S.)		42	494553	Retainer-Rotocoil	
	394664	Piston Assy. (.030" O.S.)		45	262248	Tappet-Valve	
26	391780	Ring Set (Standard)		46	212897	Gear-Cam	
	392331	Ring Set (Chrome Std.)		219	490815	Gear-Gov.	
	391781	Ring Set (.010" O.S.)		741	262932	Gear-Timing	
	391782	Ring Set (.020" O.S.)		757	213998	Link-Counterweight	
	391783	Ring Set (.030" O.S.)		758	399891	Counterweight Assy.	
				759	298909	Pin-Counterweight	
				761	94593	Screw-Counterweight	
				1020	262243	Eccentric	
				1021	94160	Pin-Eccentric	

★ Included in Gasket Set-Part No. 494241.
 ◆ Included in Carburetor Gasket Set-Part No. 494385.

● Included in Carburetor Kit-Part No. 496622.



Assemblies include all parts shown in frames.

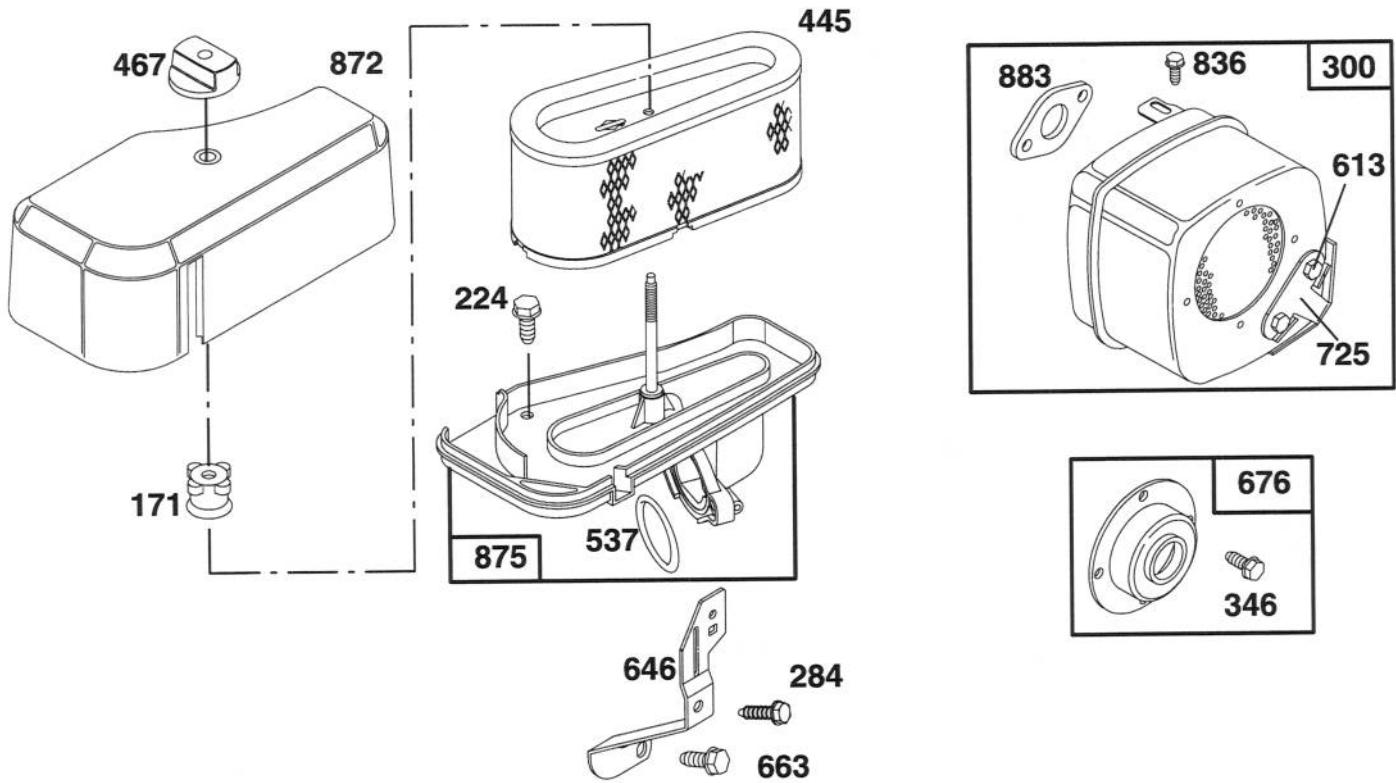
ENGINE BRIGGS & STRATTON MODEL 28B707-0126-01

Ref. No.	Part No.	Description	No. Used
◆51	272465	Gasket-Carburetor	
★52	272554	Gasket-Carburetor	
53	94637	Stud-Carb. Mtg.	
●93	281346	Bushing-Throttle Shaft	
●95	94098	Screw-Throttle	
98	495800	Screw-Idle Adjust	
●104	231789	Pin-Float Hinge	
●105	231855	Valve-Inlet Needle	
●106	231854	Seat-Inlet	
108	224666	Valve-Choke	
118	496589	Valve-Needle	
123	94616	Screw-Elbow Mtg.	
125	496592	Carburetor	
●127		Plug-Welch (Sold in Kit Only).	
130	224668	Valve-Throttle	
131	494885	Shaft-Throttle	
133	494381	Float-Carburetor	

Ref. No.	Part No.	Description	No. Used
◆137	281165	Gasket-Float Bowl	
●◆138	281164	Washer-Float Bowl	
141	495931	Shaft-Choke	
●142	496519	Nozzle-Carburetor	
		Note: 496623 Nozzle-Carb. (High Altitude)	
		Includes:	
		281164 Washer-Float Bowl	
●147	231794	Pilot-Jet	
164	213819	Carburetor-Elbow	
611	493496	Elbow-Fuel Pipe	
618	262803	Spring-Choke Return	
●634	281168	Seal-Choke Shaft	
955	94642	Screw-Fuel Bowl	
965	94010	Nut-Hex.	
975	494378	Bowl-Float	
●987	281166	Seal-Throttle Shaft	

★ Included in Gasket Set-Part No. 494241.
◆ Included in Carburetor Gasket Set-Part No. 494385.

● Included in Carburetor Kit-Part No. 496622.



Assemblies include all parts shown in frames.

ENGINE BRIGGS & STRATTON MODEL 28B707-0126-01

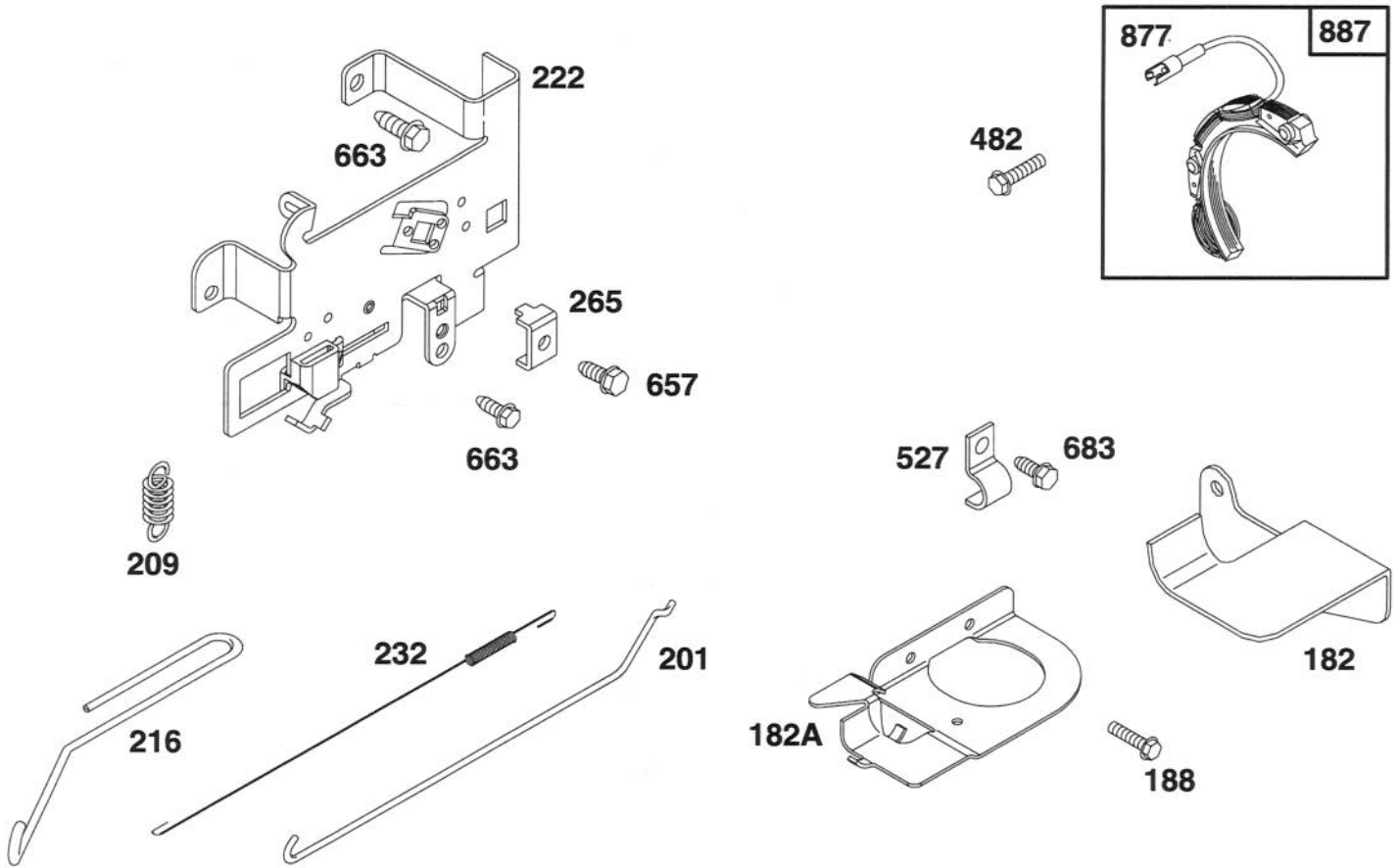
Ref. No.	Part No.	Description	No. Used
171	281051	Nut-Air Cleaner Mtg.	
224	94729	Screw-Air Cleaner Sem	
284	94704	Screw-Air Cleaner	
300	491413	Muffler-Exhaust	
346	93705	Screw-Hex. Head	
445	493910	Cartridge-Air Cleaner	
467	493903	Knob-Air Cleaner	
★537	281106	Gasket-Air Cleaner	
613	93927	Screw-Hex. Hd.	

Ref. No.	Part No.	Description	No. Used
646	224546	Brace-Air Cleaner	
663	94620	Screw-Hex. Hd.	
676	396903	Deflector-Muffler	
725	223023	Shield-Muffler	
836	94786	Screw-Hex. Hd.	
872	281105	Cover-Air Cleaner	
875	496368	Body-Air Cleaner	
★883	272293	Gasket-Exhaust Pipe	

★ Included in Gasket Set-Part No. 494241.

◆ Included in Carburetor Gasket Set-Part No. 494385.

● Included in Carburetor Kit-Part No. 496622.



Assemblies include all parts shown in frames.

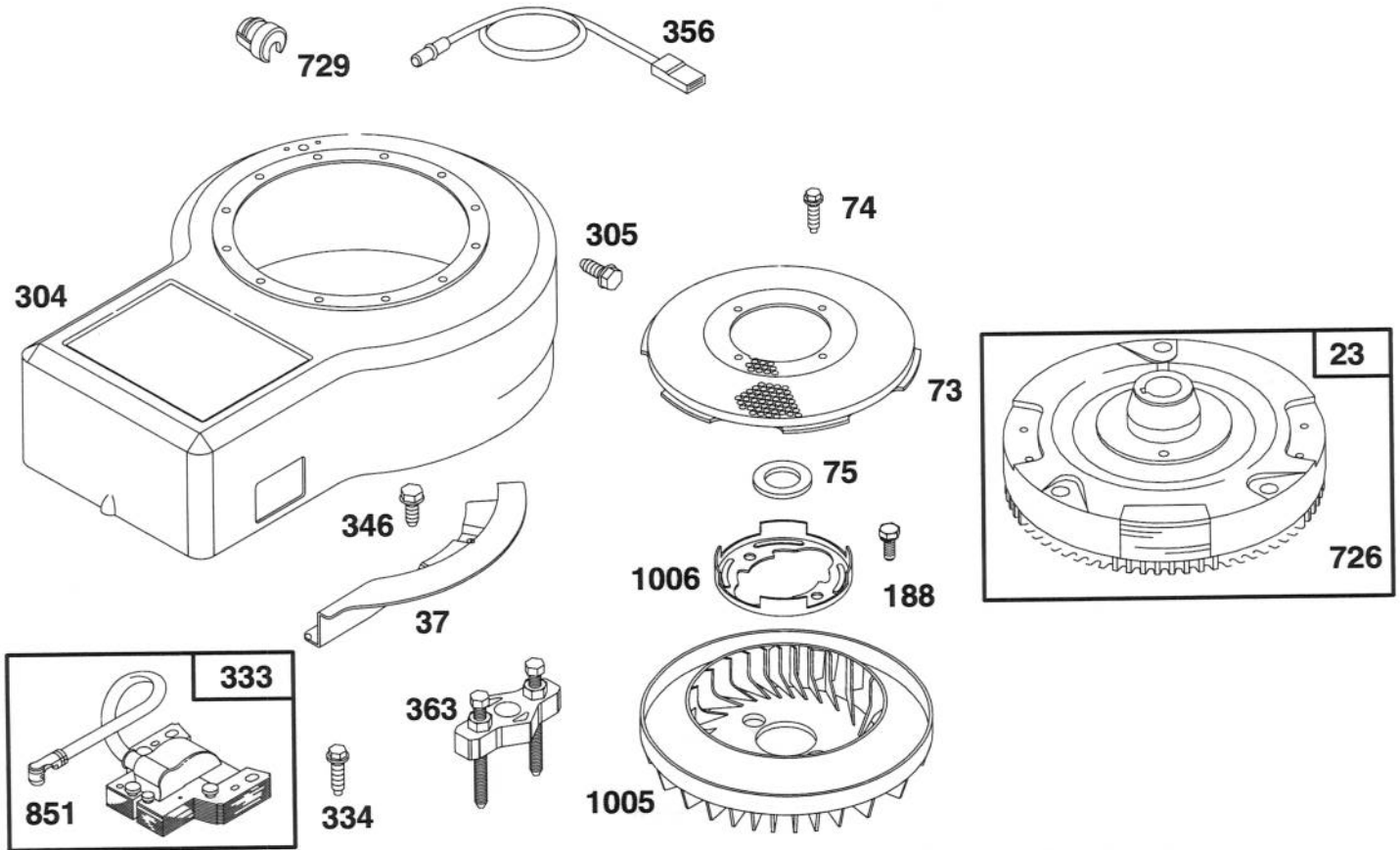
ENGINE BRIGGS & STRATTON MODEL 28B707-0126-01

Ref. No.	Part No.	Description	No. Used
182	223925	Bracket-Fuel Tank (R.H.)	
182A	223866	Bracket-Fuel Tank (L.H.)	
188	94480	Screw-Sem	
201	262767	Link-Governor	
209	260871	Spring-Governor	
216	262766	Link-Choke	
222	495611	Plate-Gov. Control	
232	262785	Spring-Governor Link	

Ref. No.	Part No.	Description	No. Used
265	221535	Clamp-Casing	
482	93621	Screw-Sem	
527	221428	Clamp	
657	93496	Screw-Sem	
663	94620	Screw-Hex. Hd.	
683	93572	Screw-Hex. Hd.	
877	393814	Diode Assy.	
887	391529	Alternator	

★ Included in Gasket Set-Part No. 494241.
 ◆ Included in Carburetor Gasket Set-Part No. 494385.

● Included in Carburetor Kit-Part No. 496622.



Assemblies include all parts shown in frames.

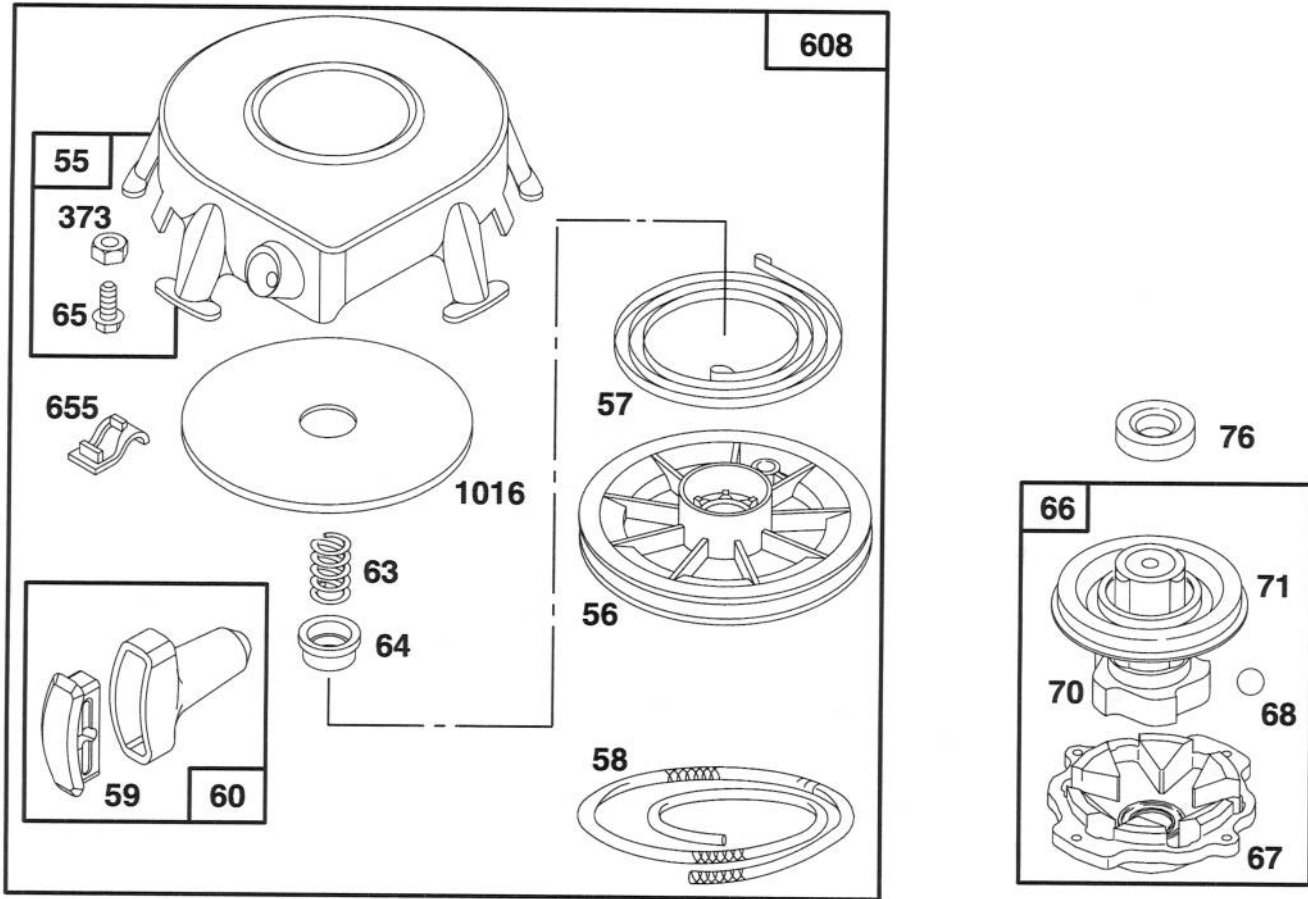
ENGINE BRIGGS & STRATTON MODEL 28B707-0126-01

Ref. No.	Part No.	Description	No. Used
23	492326	Flywheel	
37	224502	Guard-Flywheel	
73	224518	Screen-Rotating	
74	93758	Screw-Sem	
75	224061	Washer-Spring	
188	94627	Screw-Sem	
304	496319	Housing-Blower	
333	492341	Armature-Magneto	
334	94731	Screw-Sem	

Ref. No.	Part No.	Description	No. Used
346	93705	Screw-Hex. Head	
356	494328	Wire-Ground	
363	19203	Puller-Flywheel	
726	392134	Gear-Ring (Includes Mtg. Hardware)	
729	281159	Clip-Lead Wire	
851	493880	Terminal-Ignition Cable	
1005	280687	Fan-Flywheel	
1006	224413	Retainer-Fan	

★ Included in Gasket Set-Part No. 494241.
 ◆ Included in Carburetor Gasket Set-Part No. 494385.

● Included in Carburetor Kit-Part No. 496622.



Assemblies include all parts shown in frames.

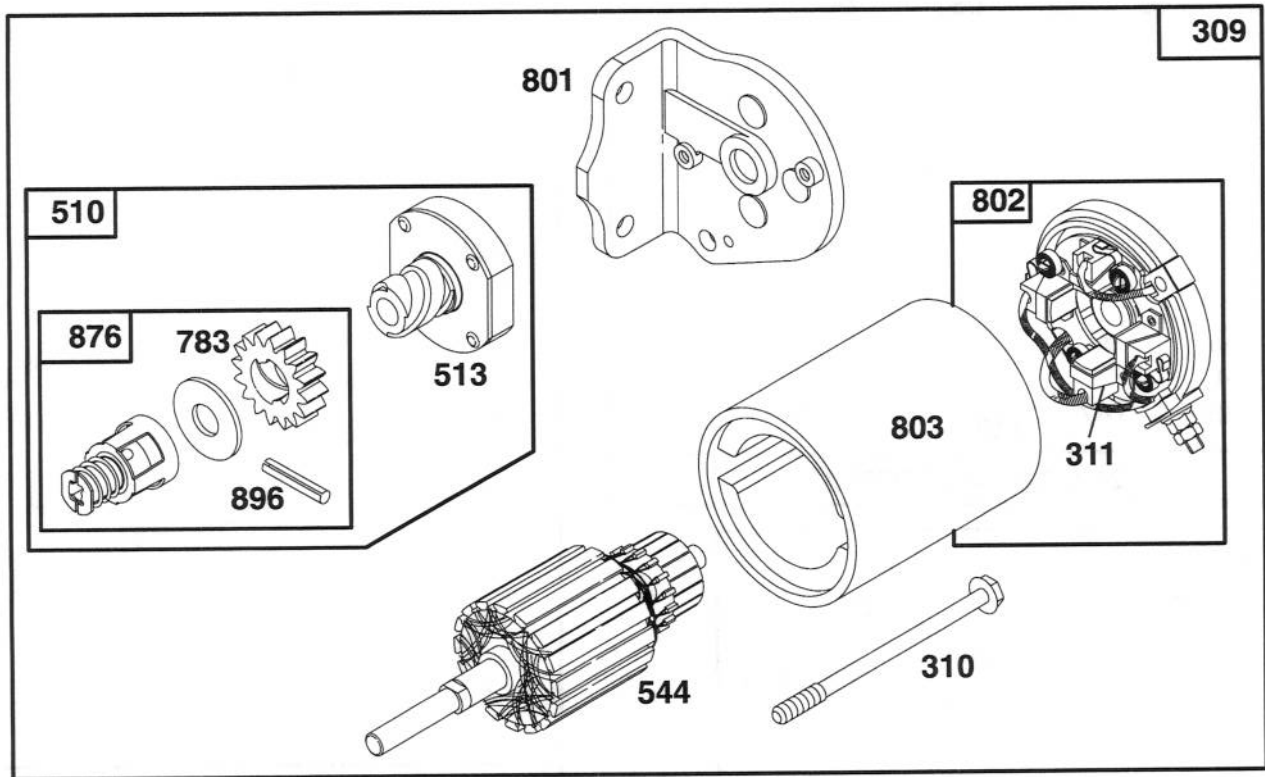
ENGINE BRIGGS & STRATTON MODEL 28B707-0126-01

Ref. No.	Part No.	Description	No. Used
55	393576	Housing - Rewind Starter (Includes 63" Rope)	
56	295871	Pulley - Rewind Starter	
57	490179	Spring - Rewind Starter	
58	66884	Rope - Starter	
59	490653	Insert - Starter Handle	
60	490652	Handle - Rewind Starter	
63	260414	Spring - Ratchet	
64	230543	Adapter - Spring	
65	94128	Screw - Sem	

Ref. No.	Part No.	Description	No. Used
66	495970	Clutch - Starter	
67	394897	Housing - Clutch	
68	63770	Ball - Clutch	
70	298799	Ratchet - Clutch	
71	394506	Washer - Retainer	
76	68238	Washer - Sealing	
373	92987	Nut - Hex.	
608	390391	Starter Assy. - Rewind	
655	222598	Anchor - Spring	
1016	490817	Spacer	

★ Included in Gasket Set - Part No. 494241.
 ◆ Included in Carburetor Gasket Set - Part No. 494385.

● Included in Carburetor Kit - Part No. 496622.



Assemblies include all parts shown in frames.

ENGINE BRIGGS & STRATTON MODEL 28B707-0126-01

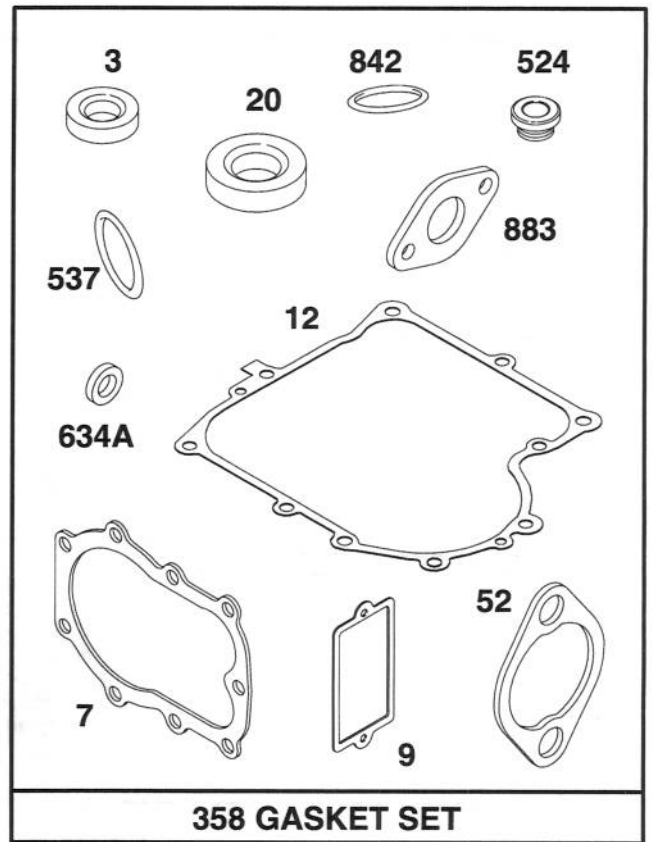
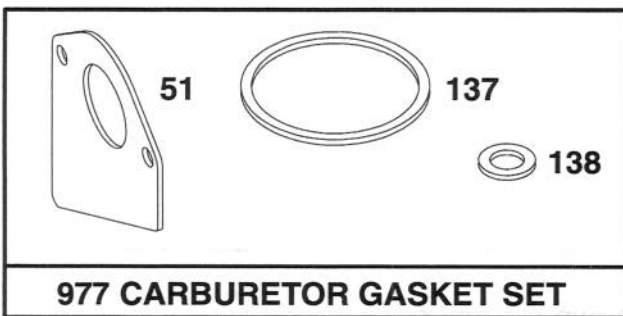
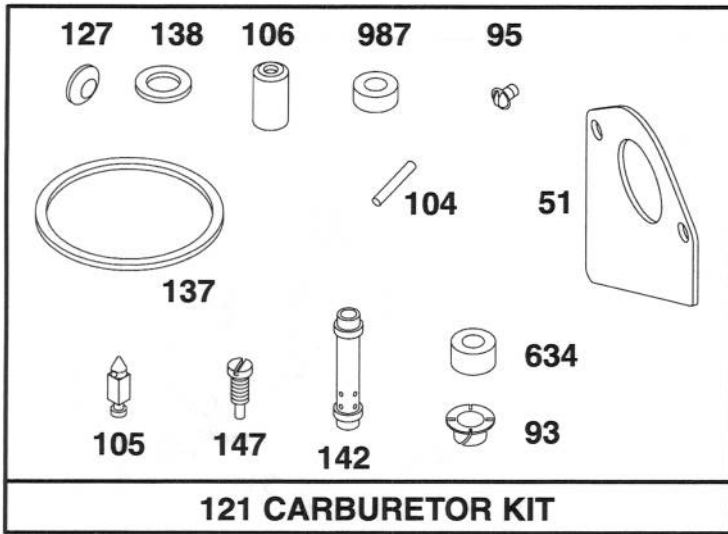
Ref. No.	Part No.	Description	No. Used
309	394805	Motor-Starter	
310	94003	Bolt-Thru	
311	395538	Brush Set-Starter	
510	495878	Drive-Starter	
513	398003	Clutch Assembly	
544	390837	Armature-Starter	

Ref. No.	Part No.	Description	No. Used
783	280104	Gear	
801	394856	Cap-Drive	
802	395537	Cap-End	
803	398159	Housing-Starter	
876	495877	Kit-Spring	
896	94288	Pin-Roll	

★ Included in Gasket Set-Part No. 494241.

◆ Included in Carburetor Gasket Set-Part No. 494385.

● Included in Carburetor Kit-Part No. 496622.



Assemblies include all parts shown in frames.

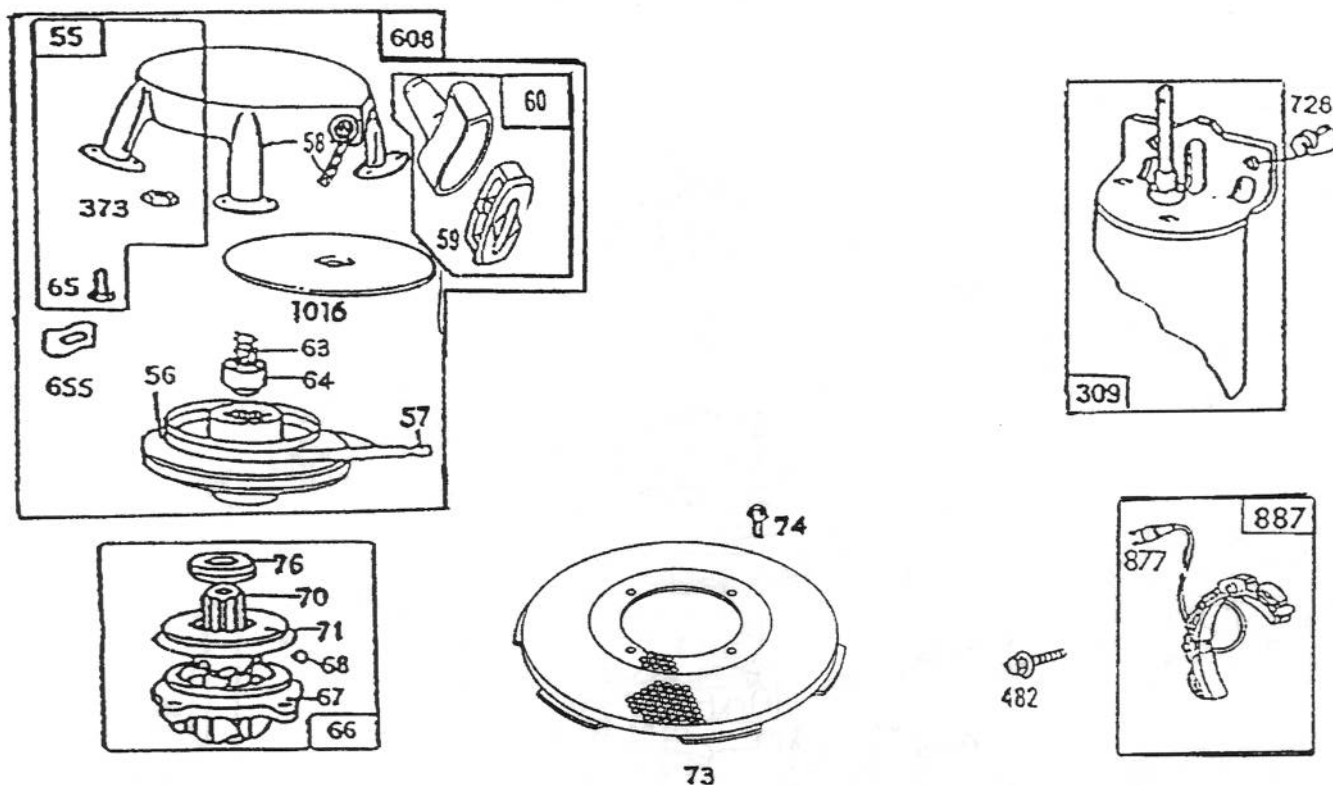
ENGINE BRIGGS & STRATTON MODEL 28B707-0126-01

Ref. No.	Part No.	Description	No. Used
★3	391086	Seal—Oil	
★7	271866	Gasket—Cylinder Head	
★9	27803	Gasket—Valve Cover	
★12	271916	Gasket—Crankcase (.015" Thick)	
★	271997	Gasket—Crankcase (.005" Thick)	
★	271996	Gasket—Crankcase (.009" Thick)	
★20	291675	Seal—Oil	
◆51	272465	Gasket—Carburetor	
★52	272554	Gasket—Carburetor	
●93	281346	Bushing—Throttle Shaft	
●95	94098	Screw—Throttle	
●104	231789	Pin—Float Hinge	
●105	231855	Valve—Inlet Needle	
●106	231854	Inlet Valve Seat	
121	496622	Carburetor Kit	

Ref. No.	Part No.	Description	No. Used
●127		Plug—Welch (Sold in Kit Only).	
◆137	281165	Gasket—Float Bowl	
◆138	281164	Washer—Float Bowl	
●142	496519	Nozzle—Carburetor Note: 496623 Nozzle—Carb. (High Altitude) Includes: 281164 Washer—Float Bowl	
●147	231794	Pilot—Jet	
358	494241	Gasket Set	
★524	281370	Seal—Filler Tube	
★537	281106	Gasket—Air Cleaner	
●634	281168	Seal—Choke Shaft	
★634A	491323	Seal—Governor	
★842	270920	Seal—Oil Filler Cap	
★883	272293	Gasket—Muffler	
977	494385	Carburetor Gasket Set	
●987	281166	Seal—Throttle	

★ Included in Gasket Set—Part No. 494241.
◆ Included in Carburetor Gasket Set—Part No. 494385.

● Included in Carburetor Kit—Part No. 496622.



Assemblies include all parts shown in frames.

C-0787

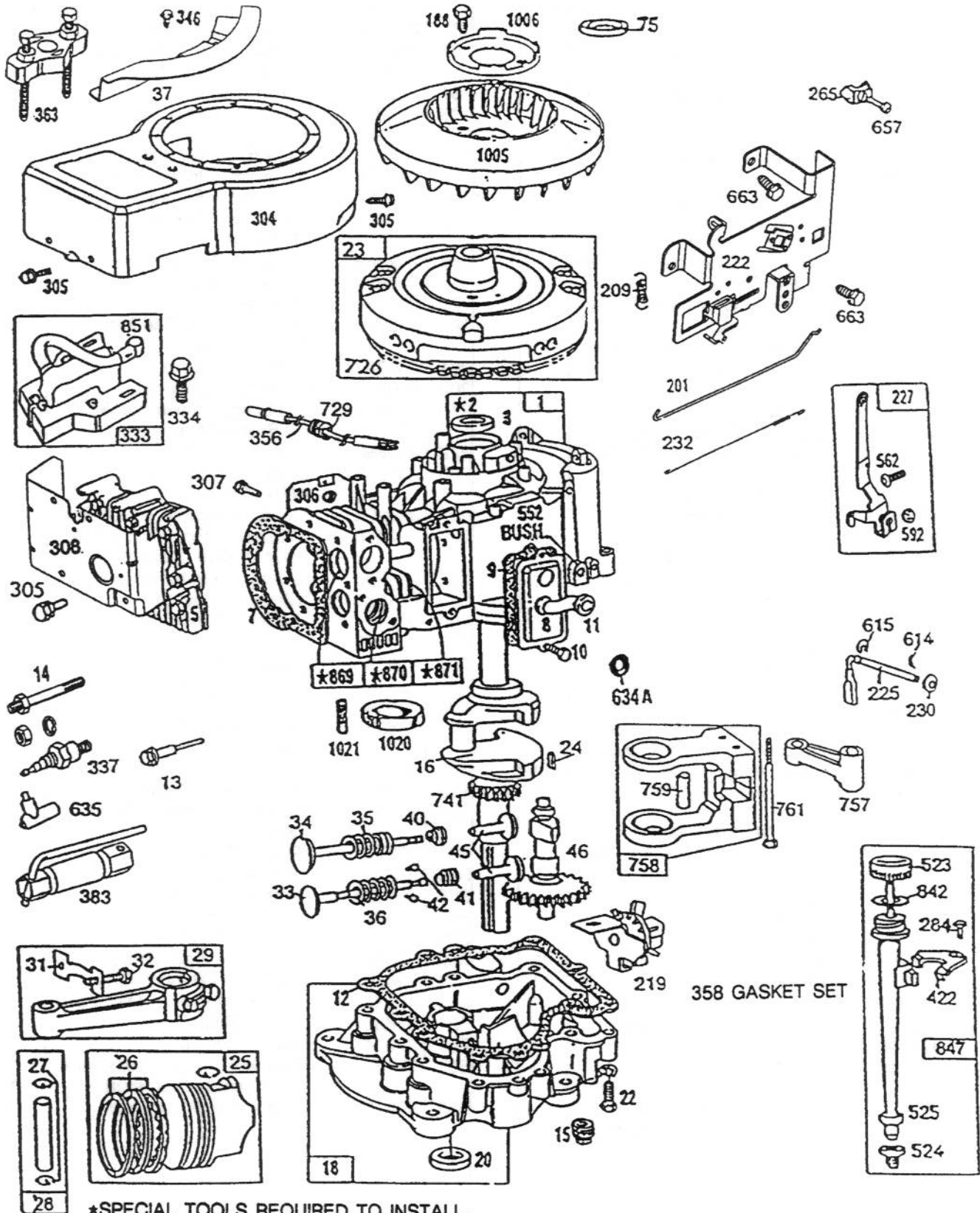
REWIND – BRIGGS & STRATTON NO. 286707-0119-01

Ref. No.	Part No.	Description	No. Used	Ref. No.	Part No.	Description	No. Used
55	393576	Housing – Rewind Starter (Includes 63" Rope)	1	73	223859	Screen – Rotating	1
56	295871	Pulley – Rewind Starter	1	74	93042	Screw – Sem	1
57	490179	Spring – Rewind Starter	1	76	68238	Washer – Ratchet, Sealing	1
58	66884	Rope – Rewind Starter (63" Long)	1	309		Motor – Starting (12 Volt) See Illustrated Pages for Replacement Parts for Starter Motor.	1
59	490653	Insert – Starter Handle	1	373	92987	Nut – Hex.	1
60	490652	Handle – Rewind Starter	1	482	93621	Screw – Sem	1
63	260414	Spring – Ratchet	1	608	390391	Starter Assembly – Rewind	1
64	230543	Adapter – Ratchet Spring	1	655	222598	Anchor – Spring	1
65	94128	Screw – Hex. Hd. Sem	1	728	94627	Screw – Sem	1
66	399671	Clutch Assembly – Rewind Starter	1	877	393814	Diode and Connector Assy. Alternator (D.C.)	1
67	394897	Housing – Starter Clutch	1	887	391529	Stator Assembly Alternator (D.C.)	1
68	63770	Ball – Clutch	1	1016	490817	Spacer	1
70	298799	Ratchet – Rewind Starter Clutch	1				
71	221653	Washer – Retainer	1				

BRIGGS & STRATTON MODEL NO. 286707-0119-01

Ref. No.	Part No.	Description	No. Used	Ref. No.	Part No.	Description	No. Used
1	490450	Cylinder Assembly	1	31	222299	Lock - Conn. Rod Screw	1
2	399265	Bearing - Cylinder Note: Requires Special Tools for Installation.	1	32	92909	Screw - Connecting Rod	1
3	391086	Seal - Oil	1	33	262246	Valve - Exhaust	1
5	494240	Head - Cylinder	1	34	262247	Valve - Intake	1
7	271866	Gasket - Cylinder Head	1	35	65906	Spring - Intake Valve	1
8	391406	Breather Assembly	1	36	26828	Spring - Exhaust Valve	1
9	27803	Gasket - Valve Cover	1	37	223752	Guard - Flywheel	1
10	94621	Screw - Sem	1	40	221596	Retainer - Intake Valve	1
11	280100	Tube - Breather	1	41	292260	Rotocoil - Exhaust Valve	1
12	271916	Gasket - Crankcase Cover (1/64" Thick)	1	42	93630	Retainer - Exhaust Valve Rotocoil	1
*	271997	Gasket - Crankcase Cover (.005" Thick)	1	45	262248	Tappet - Valve	1
*	271996	Gasket - Crankcase Cover (.009" Thick)	1	46	212897	Gear - Cam	1
13	94622	Screw - Cylinder Head (3" Long)	1	75	224061	Washer - Spring	1
14	93781	Stud - Cylinder Head Uses: 90366 Lockwasher, 93203 Nut, 231109 Spacer	1	188	93535	Screw - Sem Fan Mount. (3/4" Long)	1
15	94239	Plug - Oil Drain	1	201	262767	Link - Governor	1
16	490466	Crankshaft Note: Order Part Number 94196 For Timing Gear Key	1	209	260871	Spring - Governor	1
18	494238	Base - Engine	1	219	490815	Oil Slinger, Governor Gear, & Bracket Assembly	1
20	291675	Seal - Oil	1	222	493896	Plate - Governor Control	1
22	94624	Screw - Base Mtg. Sem	1	225	231058	Crank - Governor (1/4" Dia.)	1
23	492326	Flywheel & Ring Gear Assy. Magneto	1	227	493935	Lever Assembly - Governor	1
24	222698	Key - Flywheel	1	230	222450	Washer - Governor Crank (1/4" Inside Diameter)	1
25	394661	Piston Assy. - Standard	1	232	262785	Spring - Governor Link	1
	394662	Piston Assy. - .010" O.S.	1	265	221535	Clamp - Casing	1
	394663	Piston Assy. - .020" O.S.	1	284	94419	Screw - Clamp Mounting	1
	394664	Piston Assy. - .030" O.S.	1	304	494269	Housing Blower (Red)	1
		PISTON RING SETS Note: For Chrome Ring Set Standard Size, Order No. 392331		305	94619	Screw - Blower Housing Mounting, Sem	1
26	391780	Ring Set - Piston Std.	1	306	224545	Shield - Cylinder	1
	391781	Ring Set - Piston .010" O.S.	1	307	94623	Screw - Cylinder Shield Mounting, Sem	1
	391782	Ring Set - Piston .020" O.S.	1	308	491490	Cover - Cylinder Head	1
	391783	Ring Set - Piston .030" O.S.	1	333	492341	Armature - Magneto	1
27	260924	Lock - Piston Pin	1	334	93381	Screw - Armature Mtg. Sem	1
28	299691	Pin Assy. - Piston Std.	1	337	802592	Plug - Spark	1
	391286	Pin Assy. - Piston .005" O.S.	1	346	93705	Screw - Hex. Hd.	1
29	490348	Rod Assembly - Conn. Note: For Connecting Rod with .020" Undersize Crankpin Bore, Order No. 490469.	1	356	494328	Wire Assembly	1
				358	494241	Gasket Set	1
				363	19203	Puller - Flywheel	1
				383	89838	Wrench - Spark Plug	1
				422	224390	Clamp - Oil Filler Tube	1
				523	490327	Cap & Dipstick - Oil Filler	1
				524	68838	Seal - Filler Tube	1
				525	280741	Tube - Oil Filler	1
				552	231597	Bushing - Governor Crank (1/4" Inside Diameter)	1
				562	92613	Bolt - Governor Lever	1

BRIGGS & STRATTON MODEL NO. 286707-0119-01



*SPECIAL TOOLS REQUIRED TO INSTALL.

SEE REPAIR INSTRUCTION MANUAL.

Assemblies include all parts shown in frames.

358 GASKET SET

BRIGGS & STRATTON MODEL NO. 286707-0119-01

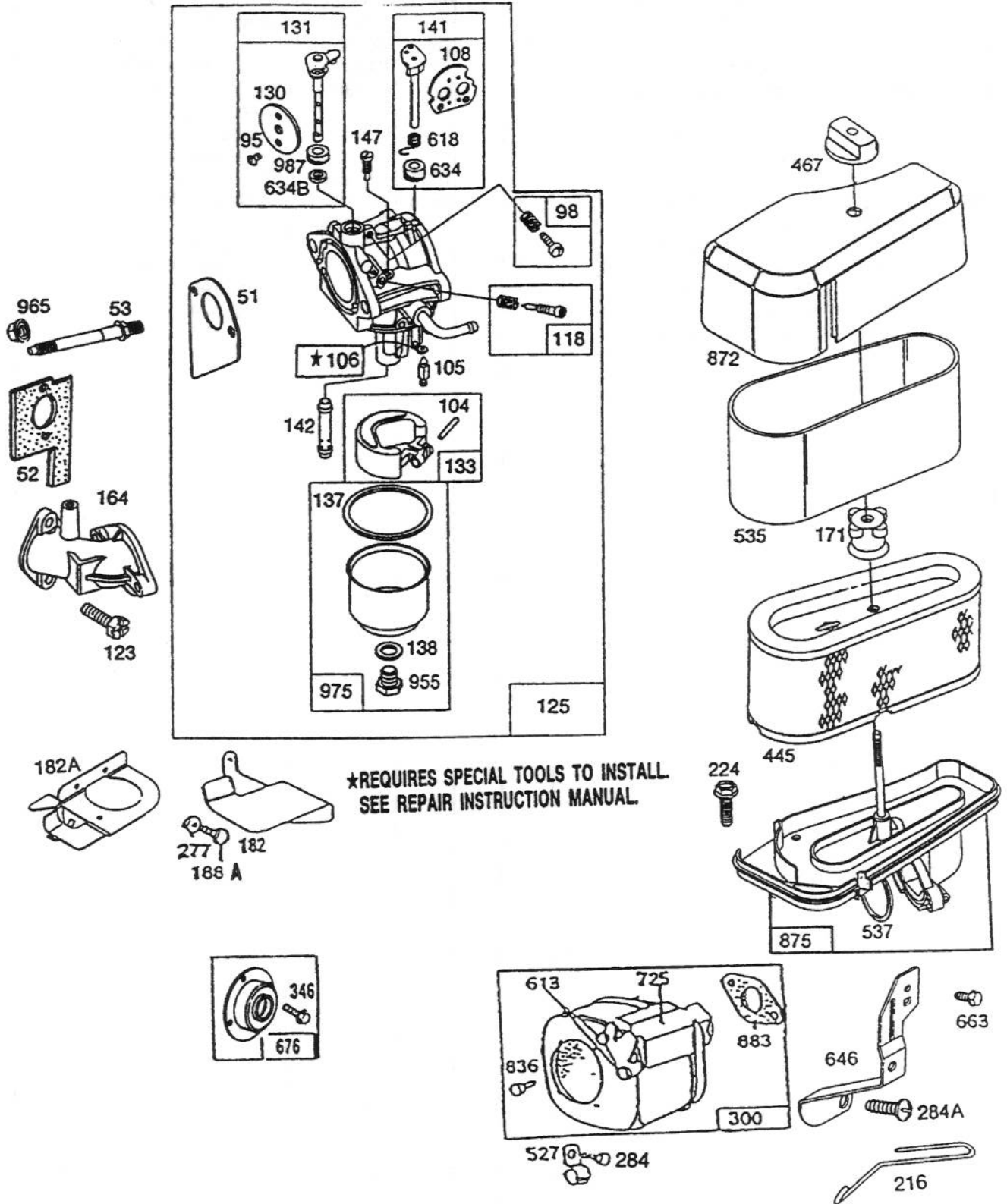
Ref. No.	Part No.	Description	No. Used
592	231082	Nut – Hex. (10–24)	1
614	93306	Cotter – Hair Pin	1
615	93307	Retainer – Ring	1
634A	491323	Seal – Governor	1
635	66538	Elbow – Spark Plug	1
657	93496	Screw – Sem	1
663	94620	Screw – Hex. Hd.	1
726	392134	Gear – Ring (Incl. Mounting Parts)	1
729	281159	Clip – Lead Wire	1
741	262135	Gear – Timing	1
757	212359	Link – Counterweight	1
758	399891	Counterweight Assembly	1
759	298909	Pin – Counterweight	1
761	93875	Screw – Counterweight	1
842	270920	Seal – Oil Filler Cap	1

Ref. No.	Part No.	Description	No. Used
847	490474	Fill Group – Oil	1
8 51	221798	Terminal – Ignition Cable	1
869	261463	Seat – Intake Valve (Std.)	1
870	213316	Seat – Exhaust Valve (Std.)	1
871	261961	Guide – Exhaust Valve Note: 231218 Guide – Intake Valve (Brass) See Repair Manual	1
1005	280687	Fan – Flywheel	1
1006	223726	Retainer – Fan	1
1020	262243	Eccentric	1
1021	94160	Pin – Eccentric	1
*	494241	Kit – Gasket Set (Incl. Ref. #3, 7, 9, 12, 20, & 634A)	1

*Not Illustrated

BRIGGS & STRATTON MODEL NO. 286707-0119-01

121 CARBURETOR OVERHAUL KIT



Assemblies include all parts shown in frames.

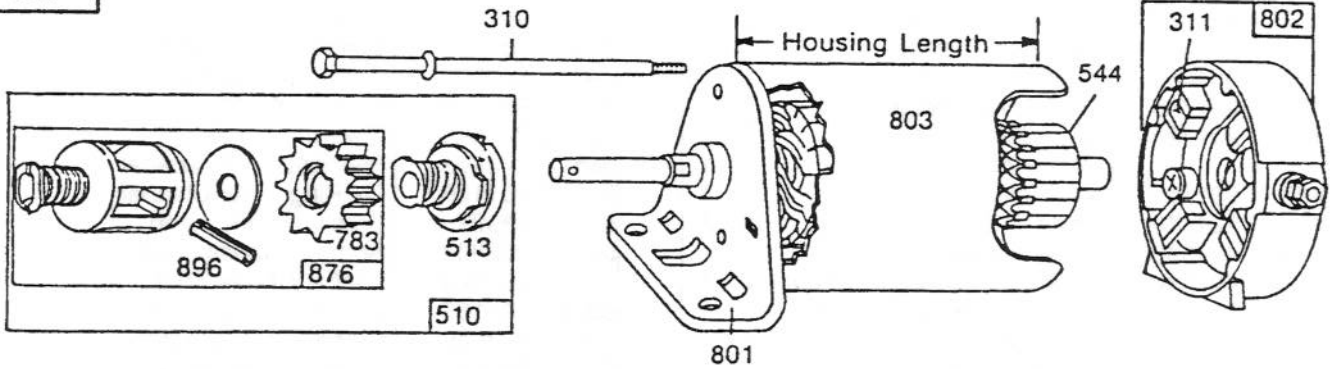
BRIGGS & STRATTON MODEL NO. 286707-0119-01

Ref. No.	Part No.	Description	No. Used
51	272465	Gasket – Carburetor (Carburetor to Elbow)	1
52	270872	Gasket – Carburetor (Elbow to Cylinder)	1
53	94637	Stud – Carburetor, Mount.	1
95	94098	Screw – Throttle	1
98	494382	Screw – Idle Speed	1
104	231789	Pin – Float Hinge	1
105	231790	Valve Assembly Inlet Needle	1
106	281169	Inlet Valve Seat	1
108	224540	Valve – Choke	1
118	494383	Valve – Needle	1
121	494384	Kit – Carburetor Overhaul	1
123	94616	Screw – Elbow Mounting	1
125	494502	Carburetor Assembly	1
130	224539	Valve – Throttle	1
131	494379	Shaft & Lever, Throttle	1
133	494381	Float – Carburetor	1
137	281165	Gasket – Float Bowl	1
138	281164	Washer – Float Bowl Screw	1
141	494380	Shaft & Lever – Choke	1
142	494537	Nozzle Jet – Carburetor Note: 494499 High Altitude Kit Includes: 231796 Pilot Jet (High Altitude) 281164 Seat–Bowl Screw 494386 Nozzle High Altitude	1
147	231794	Pilot – Jet	1
164	213819	Carburetor j– Elbow	1
171	281051	Nut – Air Cleaner Mounting	1
182	223925	Bracket – Fuel Tank (R.H.)	1
182A	223866	Bracket – Fuel Tank (L.H.)	1
188A	93634	Screw – Sem (7/8" Long)	1
216	262766	Link – Choke	1

Ref. No.	Part No.	Description	No. Used
224	94513	Screw – Air Cleaner, Sem	1
277	22776	Washer – Flat	1
284	94419	Screw – Clamp Mounting	1
284A	94326	Screw – Air Cleaner	1
300	491413	Muffler – Exhaust	1
346	93705	Screw – Hex. Head	1
445	493909	Cartridge – Air Cleaner	1
467	493903	Knob – Air Cleaner	1
527	221428	Clamp	1
535	272403	Element – Air Cleaner	1
537	281106	O–Ring – Air Cleaner	1
613	93927	Screw – Hex. Head	1
618	262803	Spring – Choke Return	1
634	281168	Seal – Choke Shaft	1
634B	281167	Washer – Throttle Shaft	1
646	224546	Brace – Air Cleaner	1
663	94620	Screw – Hex. Head	1
676	396903	Deflector – Muffler	1
725	223023	Shield – Muffler	1
836	94513	Screw – Hex. Head	1
872	281104	Cover – Air Cleaner	1
875	494237	Body – Air Cleaner	1
883	270917	Gasket – Exhaust Pipe	1
955	94642	Screw – Fuel Bowl	1
965	94108	Locknut – Air Cleaner, Mtg.	1
975	494378	Bowl Ass'y – Carburetor	1
977	494385	Kit – Gasket, Carburetor	1
987	281166	Seal – Throttle Shaft	1
*	494384	Kit – Overhaul, Carburetor (Incl. Ref. #51, 95, 104, 105, 106, 137, 138, 142, 147, 634, 634B & 987)	1
*	494385	Gasket Set – Carburetor (Incl. Ref. #51, 137 & 138)	1
*	494241	Gasket Set (Incl. Ref. #537 & 883)	1

*Not Illustrated

309



NOTE:
To identify Briggs & Stratton manufactured starter motors, measure the housing length.

C-0784

STARTER – BRIGGS & STRATTON

Ref. No.	Part No.	Description	No. Used
309	394805	Motor & Drive Assembly	1
309	494198	Motor & Drive Assembly (Model 286707-0119-01)	1
310	94003	Thru Bolt Assembly	1
310	94004	Thru Bolt Assembly (Model 286707-0119-01)	1
311	395538	Brush Assembly	1
510	490421	Drive Assembly (Incl. Ref. #513, 783, 876 & 896)	1
513	398003	Clutch Assembly	1
544	390837	Armature Assembly	1
544	391160	Armature Assembly (Model 286707-0119-01)	1

Ref. No.	Part No.	Description	No. Used
783	280104	Gear	1
801	394856	Drive End Cap Assembly (Incl. Brush Set)	1
802	395537	End Cap Assembly Commutator	1
803	398159	Housing Assembly (3-21/32" Long)	1
803	494205	Housing Assembly (4-3/8" Long) (Model 286707-0119-01)	1
876	490467	Retainer & Pin	1
896	94288	Roll Pin	1

TORO PART NUMBER INDEX

3316-792

Part No.	Description	Pg. No.	Ref. No.	Qty.	Part No.	Description	Pg. No.	Ref. No.	Qty.
147665	Screw – Phillips Hd.	6	1	2	56-7240	Bracket – Retaining, Spring	3	3	1
147665	Screw – Phillips Head	4	1	2	56-7400	Arm – Lever, H.O.C.	5	24	1
3-6498	Washer – Thrust	2	5	5	56-7470	Bracket – Rack, Steering	2	33	1
7-0036	Key – Square	11	24	2	56-7500	Shaft – Steering	2	31	1
12-5820	Pulley – Idler	9	35	1	56-7520	Bushing – Sector	2	22	1
12-8819	Loose Parts	1	*	1	56-7530	Bolt – Shoulder	2	20	1
12-8829	Loose Parts	1	*	1	56-7570	Rod – Engagement	3	15	1
12-9020	Retainer – Belt	9	34	1	56-7650	Tube – Pivot	3	14	1
14-9999	Deck – Cutting, Recycler	13	49	1	56-7670	Cable – Battery, Positive	9	21	1
19-1470	Bolt – Shoulder	5	20	1	56-7670	Cable – Positive	6	17	1
23-0660	Switch – Ignition	4	10	1	56-7710	Hold Down – Battery	8	26	1
26-0671	Bolt – Blade	13	39	1	56-7720	Post – Battery	8	21	1
27-9080	Bearing – Flange	2	15	4	56-7810	Decal – Brake, Parking	1	9	1
28-0380	Spacer – Axle, Front	2	24	1	57-4060	Retainer – Front	9	16	1
28-0540	Bolt – Shoulder	5	8	1	57-4070	Retainer – Rear	9	20	1
28-2480	Washer	11	15	2	57-9940	Spring – Brake	11	17	1
28-2480	Washer	2	43	2	60-9730	Guide – Belt	13	26	2
28-7350	Post – Pivot	13	16	1	61-9760	Wheel – Deck	13	32	2
28-7890	Module – Interlock	6	11	1	61-9780	Cap – Hub	11	14	2
28-8010	Spring – Torsion	13	10	1	61-9780	Cap – Hub	2	44	2
28-8070	Lanyard	13	55	1	62-3760	Screw – Cap Hex. Hd.	9	27	1
28-8080	Boot – Terminal	8	22	1	62-3930	Spring – Extension	5	5	1
28-8130	Pin – Chute, Locking	13	54	1	62-3930	Spring – Extension	3	6	1
38-1420	Switch – Interlock	7	2	1	62-4300	Pad – Battery	8	25	1
40-6230	Spring – Torsion	13	51	1	62-5480	Isolator – Seat	7	11	4
44-5930	Assembly – Deflector	13	11	1	62-5490	Support – Fuel Line	9	10	1
47-0010	Arm – Suspension, Front	2	13	2	63-5540	Base – Seat	7	3	1
47-0540	Pedal	3	19	2	63-5670	Tube – Bumper, Seat Rod	7	7	1
47-0550	Bracket – Brake, Pedal	3	17	1	63-5830	Link – Suspension, Deck	5	16	2
47-0560	Bracket – Clutch, Pedal	3	12	1	63-8360	Key	4	6	1
47-0570	Spacer – Pedal	3	16	3	65-2920	Pad – Pedal, Foot	3	5	2
47-0590	Spindle – L.H.	2	*	1	65-5670	Bolt – Shoulder	5	21	1
47-0600	Spindle – R.H.	2	4	1	65-5670	Screw – Shoulder	8	34	1
47-0610	Tie Rod – Adjustable	2	34	1	66-1340	Decal – Danger	13	34	1
47-0700	Bearing – Flange	2	27	1	66-6740	Cover – Shaft, Steering	4	2	1
47-0760	Support – Axle, Front	2	11	1	68-3650	Decal – Warning, Deflector	13	13	1
47-0770	Shaft – Pivot, Pedal	3	8	1	76-1090	Decal – Instructions	4	23	1
47-0780	Retainer – Shaft	3	9	1	76-1340	Decal – Made In USA	5	26	1
47-0930	Footrest – R.H.	1	22	1	76-1560	Spacer	12	13	2
47-0940	Footrest – L.H.	1	16	1	79-0370	Decal – Danger	1	7	1
47-0960	Spring – Compression	13	3	1	80-2310	Bracket – Bell Crank Mount	5	2	1
47-1140	Retainer – Spring, Top	13	2	2	80-2320	Bracket – H.O.C., Engage	5	15	1
47-1180	Bracket – Engagement	13	1	1	80-2330	Link – Bell Crank	8	35	1
47-1200	Shaft – Adjusting	13	4	1	80-2340	Bracket – Pivot, Inner	8	6	1
47-1290	Brake – Parking	1	10	1	80-2350	Pivot – Outer	8	4	1
47-1420	V-Belt		24	1	80-2360	Crank – Bell, Deck Engage	5	22	1
47-1840	Bracket – Height-of-Cut	5	13	1	80-2370	Shaft W.A. – Pivot	8	5	1
47-1850	Lever – Height-of-Cut	5	6	1	80-2400	Lever W.A. – Engage	8	2	1
47-1910	Solenoid	6	12	1	80-2430	Axle – Front	2	18	1
47-2060	Bracket – Brake, Parking	1	19	1	80-2450	Rack – Steering	2	19	1
47-2981	Hose – Fuel Line	9	9	1	80-2460	Tie Rod – Fixed	2	*	1
49-3242	Assy. – Wheel, Steering	4	5	1	80-2530	Assembly – Brake	13	50	1
54-9220	Decal – Caution, Deflector	13	12	1	80-2550	Pad – Brake	13	6	1
55-3570	Cap – Fuel	9	14	1	80-2560	Plate – Deck, Brake Mtg.	13	47	1
56-2540	Tube – Vent, Battery	8	37	1	80-2570	Pin – Clevis	13	5	2
56-6590	Bolt – Wheel	13	33	2	80-2580	Rod – Adjusting	13	52	1
56-7030	Body – Spindle	13	44	1	80-2600	Battery – 12 Volt	8	24	1
56-7050	Tank – Fuel	9	15	1	80-2620	Rod – Base, Seat	7	8	1
56-7070	Spring – Torsion, Clutch	3	11	1	80-2630	Kicker – 32	13	29	4
56-7080	Spring – Torsion, Brake	3	18	1	80-4350	Shaft – Spindle	13	41	1
56-7130	Tower – Front	1	4	1	80-4370	Shield – Bearing	13	42	1
56-7140	Tower – Rear	1	8	1	80-4390	Spacer – Hardened	13	43	1
56-7170	Guide – Shaft, Steering	1	6	1	80-4430	Blade – Recycler	13	40	1
56-7180	Cover – Front	2	30	1	80-4470	Pulley	13	22	1

*Not Illustrated

TORO PART NUMBER INDEX (Cont.)

Part No.	Description	Pg. Ref. No. No. Qty.	Part No.	Description	Pg. Ref. No. No. Qty.
80-4480	Deck - Cutting, Recycler	49 1	233-48	Knob	8 1 2
80-4490	Ring - Deck	13 48 4	233-48	Knob	5 19 1
80-4570	Stiffener - Blade	13 37 1	237-27	Valve Stem w/Cap	2 41 2
82-6150	Assy. - Cover, Discharge	13 14 1	237-143	O-Ring	8 27 2
82-6270	Decal - Recycler	35 1	2411-32	Ball Joint	8 31 1
83-7010	Brace - Cover, Rear	13 17 1	2412-68	Clamp	4 17 2
83-7020	Spacer - Bearing	13 25 1	2412-68	Clamp - Wire	7 4 1
88-3950	Assembly - Seat	7 1 1	2412-98	Clamp - Hose	9 8 2
88-9730	Rim	11 12 2	251-210	Bearing	2 2 4
88-9800	Cover - Gate, Shift	6 24 1	251-297	Bearing	13 21 2
88-9930	Switch - Micro, Short	6 4 1	257-11	Washer	8 18 1
88-9931	Switch - Micro	4 24 1	283-2	Pin - Clevis	2 16 2
92-0860	Frame	6 14 1	283-2	Pin - Clevis	13 45 2
92-0861	Frame - Rear	12 8 1	283-52	Pin - Clevis	1 20 1
92-0862	Transaxle	11 8 1	288-10	Cap - Pipe	9 22 1
92-0864	Standbar	12 5 1	289-19	Nipple - Pipe	9 23 1
92-0865	Support - Axle	12 9 2	302-5	Fitting - Grease	2 1 2
92-0866	Body W.A. - Seat Support	6 8 1	302-49	Fitting - Grease	2 17 2
92-0870	V-Belt - Traction	11 4 1	321-4	Screw - Cap Hex. Hd.	13 8 1
92-0871	Rod - Traction	9 29 1	321-4	Screw - Cap Hex. Hd.	3 10 1
92-0872	Rod - Brake	11 18 1	321-4	Screw - Cap Hex. Hd.	5 11 4
92-0873	Pulley - Engine	9 24 1	321-4	Screw - Cap Hex. Hd.	8 12 2
92-0874	Pulley	11 7 1	321-4	Screw - Cap Hex. Hd.	6 13 2
92-0875	V-Belt	13 24 1	321-4	Screw - Cap Hex. Hd.	1 21 2
92-0876	Guard - Front	2 37 1	322-3	Screw - Cap Hex. Hd.	13 30 7
92-0877	Panel - Seat Base, R.H.	6 21 1	322-5	Screw - Cap Hex. Hd.	3 2 1
92-0878	Panel L.H. - Base, Seat	5 9 1	322-5	Screw - Cap Hex. Hd.	12 6 15
92-0879	Spring	9 1 1	322-5	Screw - Cap Hex. Hd.	6 6 2
92-0880	Arm - Shift, Transaxle	11 23 1	322-5	Screw - Cap Hex. Hd.	3 7 2
92-0881	Bracket W.A. - Traction	9 4 1	322-5	Screw - Cap Hex. Hd.	8 8 4
92-0883	Plate - Mounting, Idler	9 2 1	322-5	Screw - Cap Hex. Hd.	13 9 12
92-0884	Lever W.A. - Shaft	8 10 1	322-5	Screw - Cap Hex. Hd.	2 9 8
92-0887	Support - Shift, Lower	8 19 1	322-5	Screw - Cap Hex. Hd.	5 12 2
92-0888	Support - Shift, Upper	8 14 1	322-5	Screw - Cap Hex. Hd.	1 14 10
92-0889	Link - Shift	11 1 1	322-5	Screw - Cap Hex. Hd.	4 16 8
92-0890	Control - Throttle	4 15 1	322-6	Screw - Cap Hex. Hd.	13 20 1
92-0891	Shaft W. A. - Shift	8 16 1	322-7	Screw - Cap Hex. Hd.	9 28 1
92-0894	Spring - Torsion	8 11 1	322-12	Screw - Cap Hex. Hd.	12 10 4
92-0895	Gate - Shift	6 3 1	322-14	Screw - Cap Hex. Hd.	12 11 2
92-0896	Retainer - Spring	8 29 1	322-50	Screw - Cap Hex. Hd.	12 4 1
92-0897	Spacer	12 1 1	323-9	Screw - Cap Hex. Hd.	9 32 1
92-0898	Guide - Belt	12 2 1	325-6	Screw - Cap Hex. Hd.	2 8 1
92-0899	Guide - Belt, Lower	11 21 1	329-4	Screw - Cap Hex. Hd.	11 3 1
92-1751	Decal - Shift Pattern	6 2 1	3218-1	Nut - Jam	6 18 2
92-7243	Decal - Control Panel	5 27 1	3219-7	Nut - Hex. Hd.	13 23 1
92-7244	Decal - Deck Engage	4 9 1	3220-2	Nut - Hex. Jam	2 7 1
92-7245	Decal - H.O.C.	4 21 1	3230-18	Bolt - Carriage	2 32 2
92-7974	Tread - Foot R.H.	1 * 1	3253-3	Washer - Lock	11 2 1
92-7975	Tread - Foot L.H.	1 15 1	3253-3	Washer - Lock	6 16 4
92-7985	Decal - L.H. (Model 70080)	5 10 1	3253-3	Washer - Lock	9 18 2
92-7986	Decal - L.H. (Model 70120)	5 10 1	3253-6	Washer - Lock	9 26 1
92-7987	Decal - Recycler	1 3 1	3254-2	Washer - Lock, Int. Tooth	9 5 4
92-7989	Decal - Important	2 39 1	3254-2	Washer - Lock, Int. Tooth	11 20 1
92-7990	Insert - Wheel, Steering	4 4 1	3254-5	Washer - Lock, Int. Tooth	4 8 1
92-9521	Decal - Recycler	13 35 1	3256-14	Washer - Flat	6 9 1
217-80	Rim	2 3 2	3256-22	Washer - Flat	8 13 2
218-461	Nut - Lock	4 7 1	3256-22	Washer - Flat	1 18 2
218-560	Cap - Battery	8 28 6	3256-22	Washer - Flat	9 30 1
231-116	Tire	2 42 2	3256-23	Washer - Flat	12 7 12
231-117	Tire	11 10 2	3256-23	Washer - Flat	6 7 2
232-27	Stem - Valve	11 16 2	3256-23	Washer - Flat	1 13 8
232-39	Tube - Inner	11 11 2	3256-23	Washer - Flat	5 17 4
232-44	Tube - Inner	2 2	3256-23	Washer - Flat	4 18 7
233-25	Knob	4 13 1	3256-23	Washer - Flat	2 23 6

*Not Illustrated

TORO PART NUMBER INDEX (Cont.)

3316-792

Part No.	Description	Pg. No.	Ref. No.	Qty.	Part No.	Description	Pg. No.	Ref. No.	Qty.
3256-23	Washer - Flat	13	27	4	3296-29	Nut - Lock	2	10	8
3256-23	Washer - Flat	8	33	2	3296-29	Nut - Lock	11	19	1
3256-24	Washer - Flat	1	11	1	3296-29	Nut - Lock	13	19	24
3256-24	Washer - Flat	9	33	1	3296-29	Nut - Lock	4	19	4
3256-25	Washer - Flat	9	25	1	3296-29	Nut - Lock	8	32	4
3256-26	Washer - Flat	5	25	1	3296-39	Nut - Lock	9	3	1
3256-27	Washer - Flat	3	13	3	3296-39	Nut - Lock	13	31	2
3256-35	Washer - Flat	1	1	4	3296-42	Nut - Lock	6	15	2
3256-49	Washer - Flat	13	56	1	3296-42	Nut - Lock	8	15	2
3256-57	Nut - Lock		17	1	3296-42	Nut - Lock	1	17	2
3256-57	Washer - Flat	9	36	1	3296-42	Nut - Lock	5	18	1
3257-23	Key	11	6	1	3296-47	Nut - Lock	12	12	1
3272-6	Pin - Cotter	3	1	3	3296-59	Nut - Lock	13	15	1
3272-6	Pin - Cotter	5	4	2	32103-2	Nut - Wing	13	18	1
3272-6	Pin - Cotter	1	12	1	32103-12	Nut - Wing	8	20	1
3272-6	Pin - Cotter	2	14	2	32103-22	Nut - Wing	8	23	2
3272-6	Pin - Cotter	11	22	1	32104-76	Screw - Self Tap Acorn Hd.	1	5	9
3272-6	Pin - Cotter	9	31	1	32104-76	Screw - Self-Tapping	4	14	2
3272-6	Pin - Cotter	13	36	2	32107-11	Nut - Square	9	17	2
3272-12	Pin - Cotter	2	45	2	32120-47	Ring - Retaining	8	7	1
3272-16	Pin - Cotter	11	9	1	32120-64	Ring - Retaining	11	5	1
3274-51	Screw - Hex. Socket Hd.	9	19	2	32121-9	Pin - Roll	2	28	1
3290-134	Screw - Machine	6	10	1	32121-16	Pin - Roll	8	17	1
3290-191	Nut - Speed	6	23	2	32121-25	Pin - Roll	8	3	1
3290-282	Rivet	13	7	2	32121-78	Pin - Roll	4	3	1
3290-282	Rivet	13	53	2	32121-78	Pin - Roll	8	9	1
3290-307	Pin - Cotter, Hair	7	9	1	32122-14	Screw - Truss, Phillips Hd.	13	38	8
3290-354	Nut - Double	6	20	1	32128-20	Nut - Flange Hd.	7	5	4
3290-354	Nut - Double	4	22	1	32128-21	Nut - Lock, Flange Hd.	2	25	1
3290-378	Tie - Cable	7	6	1	32128-23	Nut - Lock, Flange Hd.	2	26	1
3290-413	Washer - Belleville	5	7	8	32144-4	Screw - Special	2	21	2
3290-465	Washer - Belleville	13	57	1	32144-14	Screw	9	12	2
3290-496	Nut - Retainer	13	28	4	32144-14	Screw - Thread Forming	2	38	2
3295-43	Rivet		7	2	32144-112	Screw - Sems	6	22	2
3296-2	Nut - Lock	6	19	1	32151-48	Ring - Retaining	11	13	2
3296-4	Nut - Lock	8	30	1	32151-48	Ring - Retaining, External	2	35	2
3296-4	Nut - Lock	2	36	4	32151-61	Ring - Retaining	5	14	2
3296-8	Nut - Lock	2	12	1	32153-2	Nut - Lock	15		1
3296-8	Nut - Lock	5	23	1					
3296-8	Nut - Lock	8	36	1					
3296-8	Nut - Lock	13	46	1					
3296-29	Nut - Lock	5	1	7					
3296-29	Nut - Lock	1	2	14					
3296-29	Nut - Lock	12	3	17					
3296-29	Nut - Lock	3	4	3					
3296-29	Nut - Lock	6	5	2					
3296-29	Nut - Lock	9	6	2					

OPTIONAL EQUIPMENT

Easy Empty Bagging Kit	Model No. 79095
Twin Bag Bagger Kit	Model No. 79085
Tire Chains	Part No. 23-2340
Hi-Sail Bagging Blade	Part No. 33-4750
Wet Grass Bagging Kit	Part No. 38-5730

