



XL 380H Lawn Tractor

Model No. 71252 - 310000001 and up.

Parts Catalog

Ordering Replacement Parts

To order replacement parts, please supply the part number, the quantity, and the description of each part desired.

Understanding Reference Numbers

Each identified part in an illustration has a reference number. The reference number for a part also appears in the parts list, along with other information about the part.

This catalog uses two special reference number formats, one to indicate parts in a service assembly and another to indicate the quantity of a given part in an illustration.

Service Assembly Reference Numbers

Parts in service assemblies have reference numbers in the form a:b. The a represents the reference number of the entire service assembly and the b represents a sequential number unique to each part within the service assembly.

For example, a wheel assembly might be identified by reference number 6, the tire by 6:1, the valve by 6:2, and the wheel by 6:3. When you order the assembly identified by reference number 6, you receive all parts identified by reference numbers 6:1, 6:2, and 6:3. However, you may also order any part individually. Reference numbers of this type appear in illustrations and in part lists.

Reference Numbers Indicating Quantity

In an illustration, if a reference number indicates more than one part, the reference number has the form nX y. The n represents the quantity of the part, the X is the multiplication symbol, and the y represents the reference number.

For example, in an illustration, the reference number 2X 37 means that two of the parts identified by reference number 37 are indicated.

Contents

Description	Page	Description	Page
Frame and Body Assembly 3	Gear Assembly Transaxle No. 104-1760 13
Hood and Tower Assembly 4	Main Housing and Bearing Assembly	
Rear Body and Seat Assembly 5	Transaxle No. 104-1760 14
Front Wheel and Steering Assembly 6	Hydro Transaxle Control Assembly 15
Fixed Steering Assembly 7	38 Inch Deck, Spindle and Blade Assembly 16
Engine, Clutch and Exhaust Assembly 8	38 Inch Deck Blade Drive and Brake Assembly 17
Traction Clutch Assembly 9	38 Inch Deck Engagement Assembly 18
Rear Wheel and Tire Assembly 10	Height-of-Cut Assembly 19
Hydro Transaxle Assembly 11	Electrical Assembly 20
Side Housing and Bearing Assembly		Attachments and Accessories List 21
Transaxle No. 104-1760 12		

Part Description Abbreviations

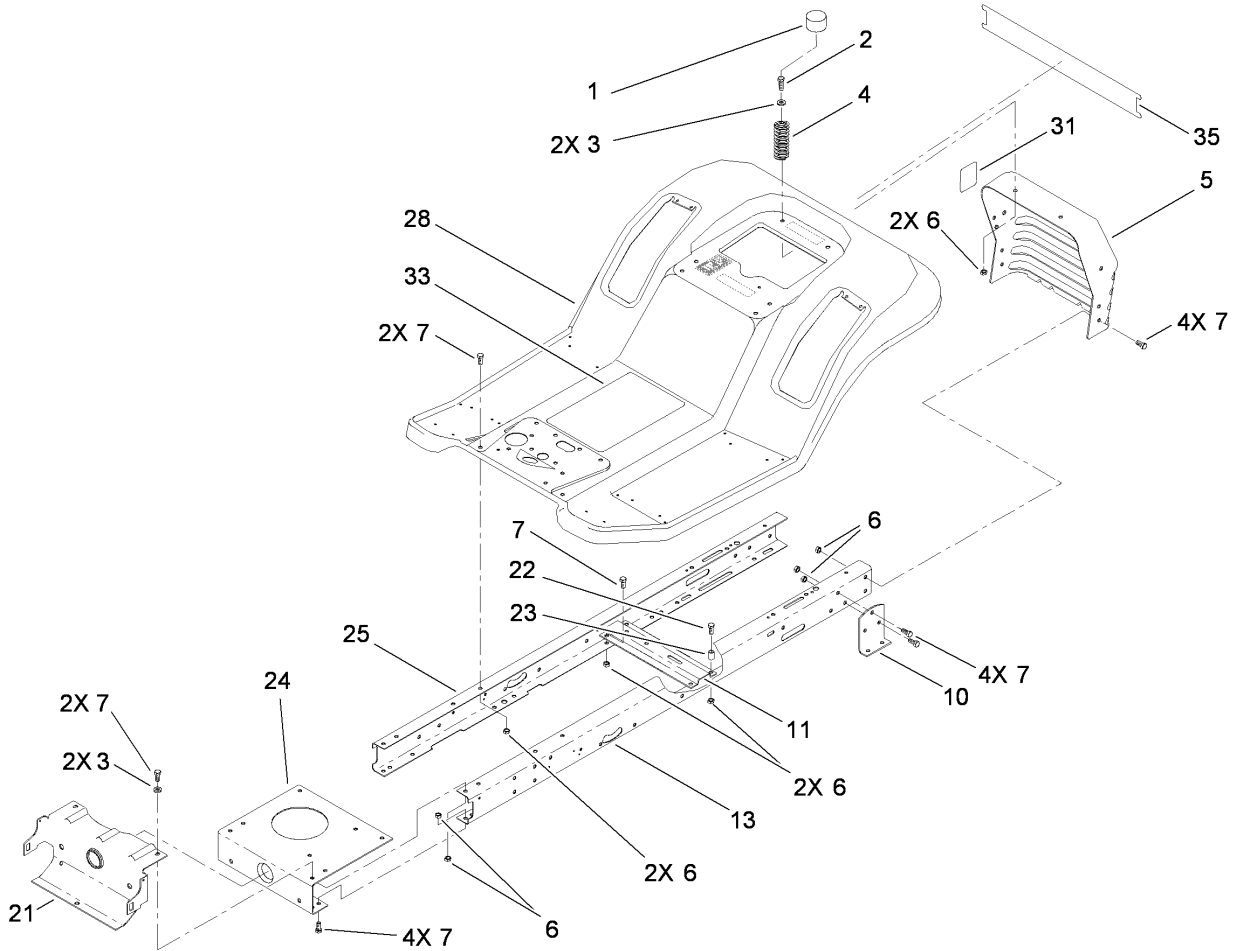
Part descriptions in this catalog may include the following abbreviations.

AR. as required	HWHTF. hex washer head thread forming
ASM. assembly	HYD. hydraulic
BBC. blade brake clutch	LH. left hand
CARR. carriage	NI. nylon insert
CCW. counter clock wise	NPTF. national pipe thread fine
CW. clockwise	PFH. phillips flat head
DEG. degrees	PPH. phillips pan head
ECM. electronic control module	PPHTF. phillips pan head thread forming
EXT. external	PRH. phillips round head
FH. flat head	PTH. phillips truss head
GA. gauge	PTO. power-take-off
HD. heavy-duty	RH. right hand
HF. hex flange	ROPS. roll-over protection system
HH. hex head	SFH. slotted fillister head
HHF. hex head flange	SHH. slotted hex head
HHFTF. hex head flange thread forming	SHWH. slotted hex washer head
HJ. hex jam	SPH. slotted pan head
HLH. hex lag head	SQH. square head
HOC. height-of-cut	SRH. slotted round head
HSBH. hex socket button head	STD. standard
HSFH. hex socket flat head	TAP. self tapping
HSH. hex socket head	TTH. torx truss head
HWH. hex washer head	

Footnotes

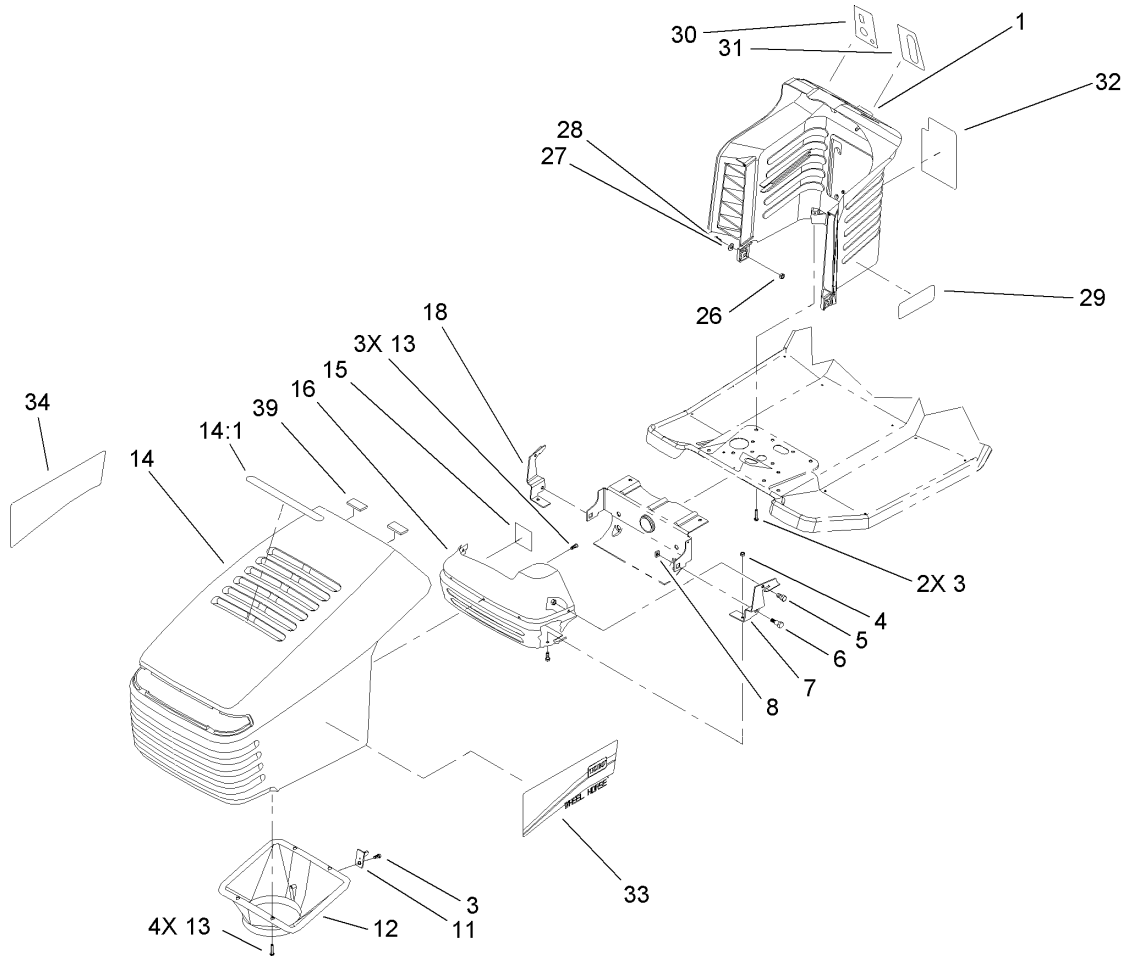
- ❶ Not illustrated
- ❷ Obtain parts from www.briggsandstratton.com

- ❸ Not serviced separately



Frame and Body Assembly

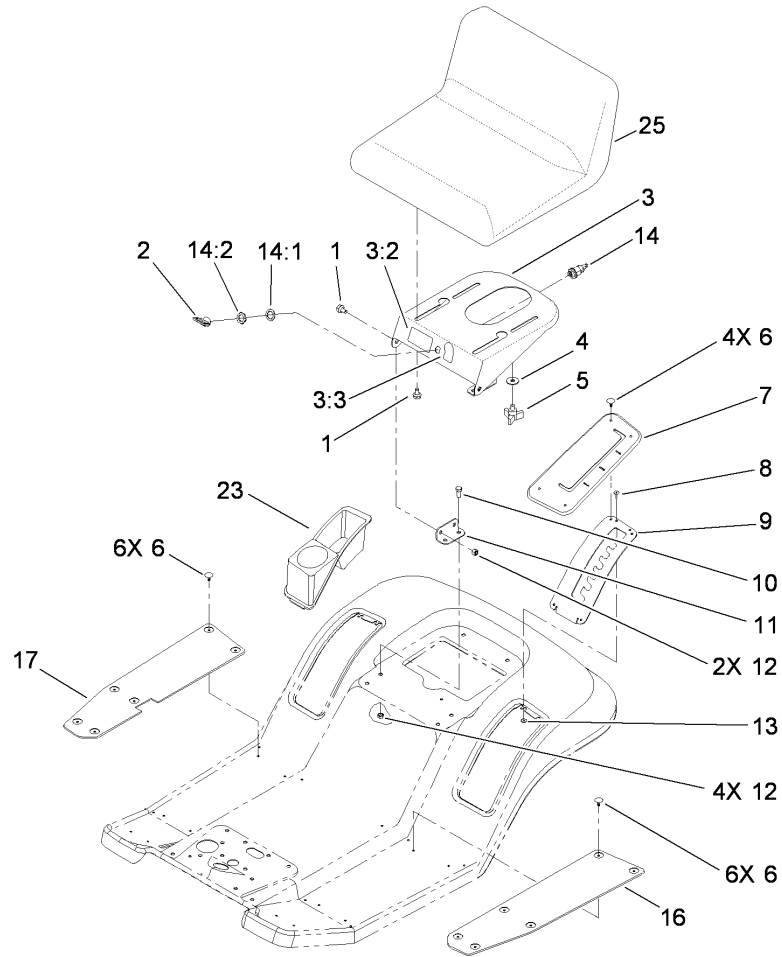
Ref	Part No.	Qty.	Description
1	701178	2	Cap-Protector
2	322-5	2	Screw-HH
3	3256-23	4	Washer-Flat
4	88-6220	2	Spring-Compression
5	99-2957-03	1	Support-Seat/Rear Hitch
6	3296-29	24	Nut-Lock, NI
7	322-3	20	Screw-HH
10	88-5260-03	2	Bracket-Transaxle, Mounting
11	88-4620-03	1	Bracket-Idler Pivot
13	99-2958-03	1	Rail-Frame, LH
21	110-8636-03	1	Support-Axle, Front
22	322-12	2	Screw-HH
23	88-5470	2	Spacer
24	88-4630-03	1	Plate-Mounting, Engine
25	99-2959-03	1	Rail-Frame, RH
28	99-2971	1	Rear Body ASM
31	100-7449	1	Decal-Valve, Dump
33	114-3236	1	Decal-Instruction, Safety
35	105-2498	1	Decal-Rear Fender, Lawn Tractors



Hood and Tower Assembly

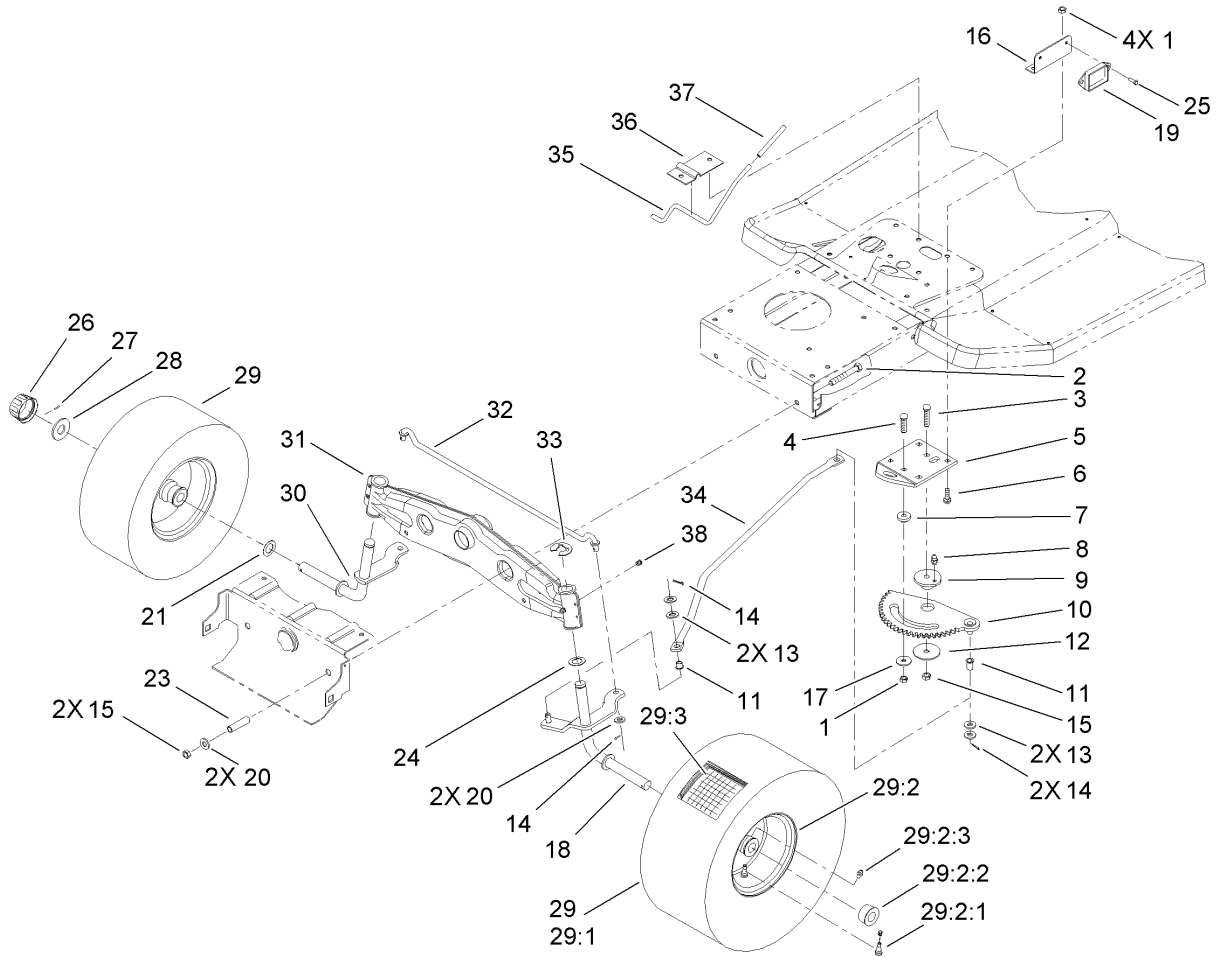
Ref	Part No.	Qty.	Description
1	107-4920	1	Tower-Steering
3	46-8091	3	Screw-HWH
4	3296-42	4	Nut-Lock, NI
5	321-2	4	Screw-HH
6	28-0540	2	Bolt-Shoulder
7	88-6050-03	1	Bracket-Pivot, LH Hood
8	3290-496	2	Nut-Retainer
11	94-1984	1	Latch-Pin
12	93-3891	1	Duct-Air, Hood
13	46-8090	7	Screw-Plastite
14	92-8650	1	Hood ASM
14:1	92-5748	1	Decal-Air Duct
15	92-5782	3	Tape-Foil
16	93-3864-03	1	Shield-Heat
18	88-6040-03	1	Bracket-Pivot, RH Hood
26	3296-29	2	Nut-Lock, NI
27	3256-23	2	Washer-Flat
28	322-3	2	Screw-HH
29	108-7804	2	Decal
30	99-8141	1	Decal-Ignition/Lights
31	92-5730	1	Decal-Throttle/Choke
32	107-4922	1	Decal-Danger
33	105-2497	1	Decal-Hood
34	105-2496	1	Decal-Hood

Ref	Part No.	Qty.	Description
39	94-1980	2	Foam-Hood



Rear Body and Seat Assembly

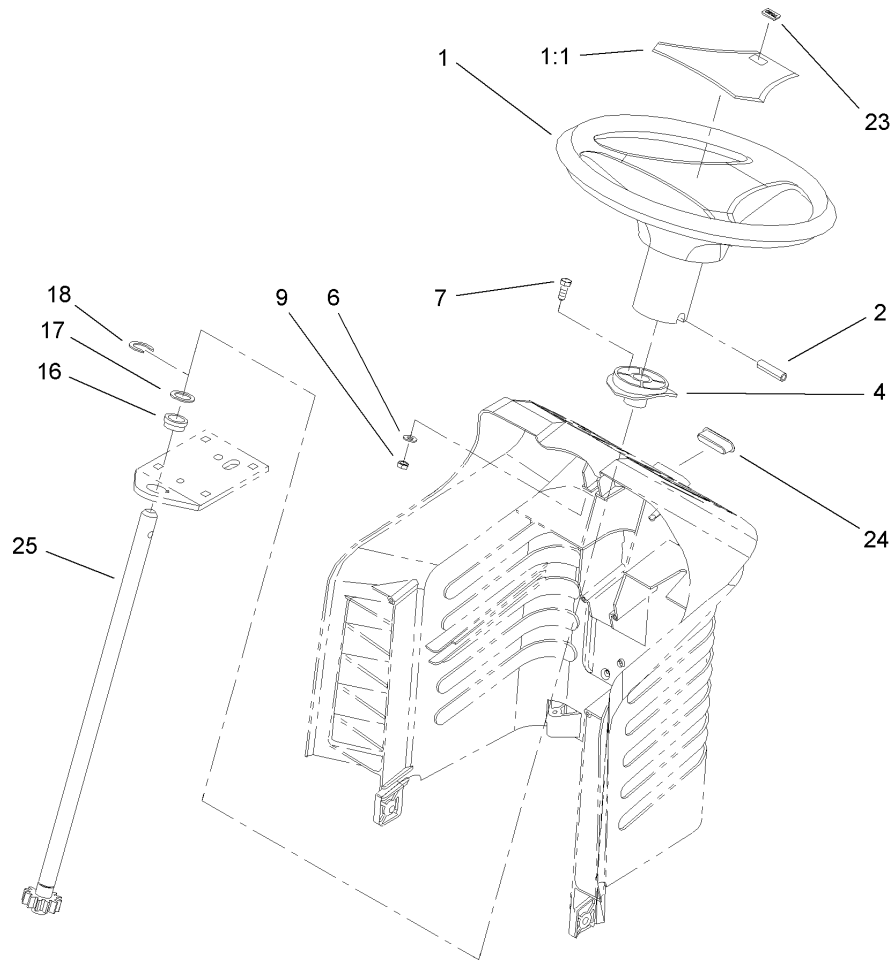
Ref	Part No.	Qty.	Description
1	37-8770	4	Bolt-Shoulder
2	63-8360	1	Key-Ignition
3	106-6437	1	Seat Support ASM
3:2	99-2986	1	Decal-Danger
3:3	99-5340	1	Decal-Switch
4	5-4460	2	Washer-Pivot
5	92-9674	2	Knob
6	3290-479	16	Fastener-Panel
7	93-7657	1	Cover-HOC
8	3290-282	2	Rivet-Blind
9	88-5030-03	1	Gate-HOC
10	322-3	4	Screw-HH
11	88-4820-03	2	Bracket-Pivot, Seat
12	3296-29	6	Nut-Lock, NI
13	3269-26	2	Washer-Plain
14	46-5780	1	Starter Switch ASM
14:1	3254-5	1	Washer-Tooth
14:2	218-461	1	Nut-HH
16	88-5240	1	Mat-Foot, LH
17	88-5230	1	Mat-Foot, RH
23	88-4990	1	Tray-Fender
25	106-6439	1	Seat-11 Inch



Front Wheel and Steering Assembly

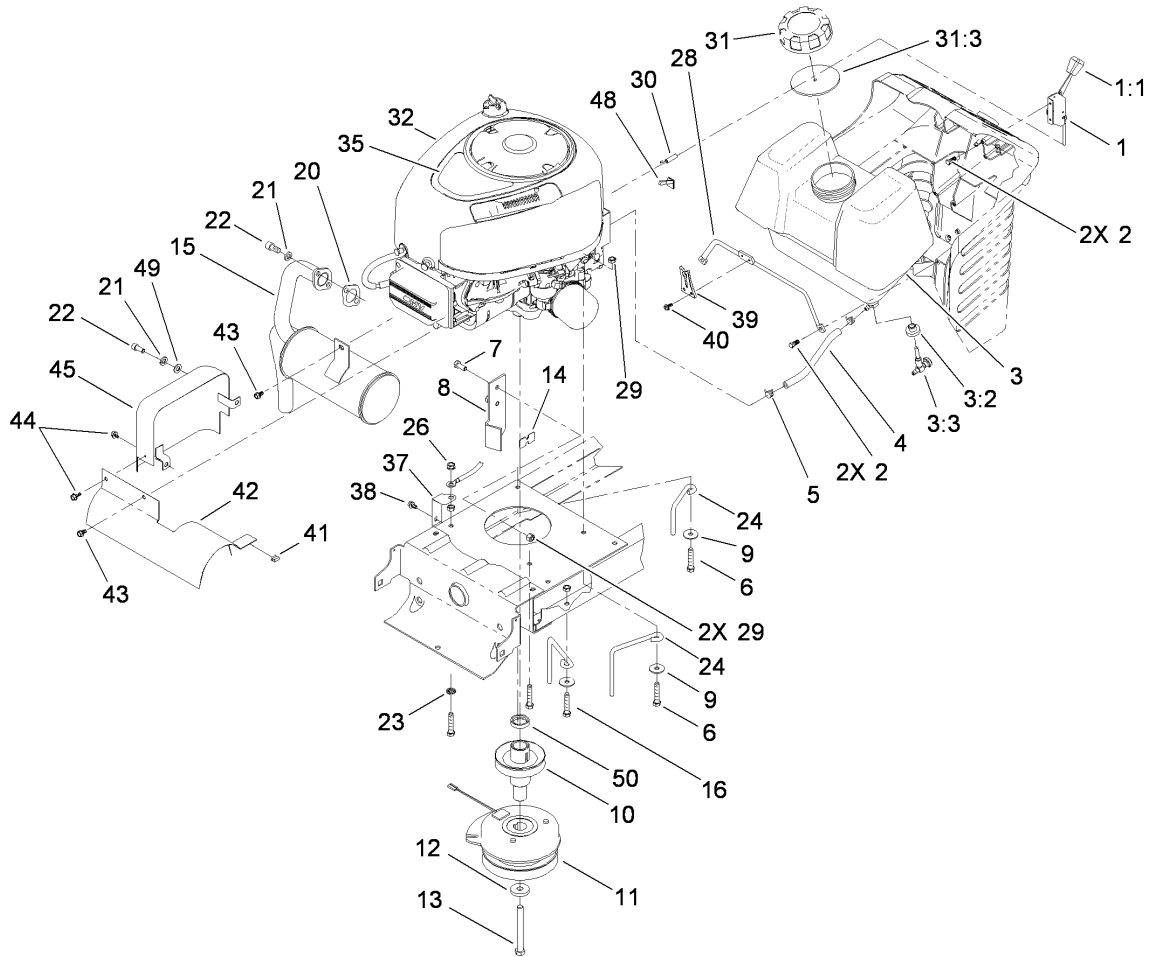
Ref	Part No.	Qty.	Description
1	3296-29	5	Nut-Lock, NI
2	323-13	2	Screw-HH
3	3231-4	1	Screw-CARR
4	3230-3	1	Screw-CARR
5	88-5130-03	1	Bracket-Rack, Steering
6	3230-2	4	Bolt-CARR
7	88-5010	1	Spacer-Rack, Steering
8	302-26	1	Fitting-Grease
9	88-4670	1	Bushing-Eccentric
10	88-5200	1	Rack-Steering
11	52-2891	2	Bushing-Flanged, Nylon
12	111419	1	Washer-Bearing
13	3256-25	4	Washer-Flat
14	3272-10	4	Pin-Cotter
15	3296-39	3	Nut-Lock, NI
16	99-2956-03	1	Bracket-Module
17	5-4460	1	Washer-Pivot
18	92-7890-03	1	LH Spindle ASM
19	99-3701	1	Module-Clutch
20	3256-24	4	Washer-Flat
21	3-6498	4	Washer-Thrust
23	88-5470	2	Spacer
24	3-6498	2	Washer-Thrust
25	9266714	2	Screw-HWH

Ref	Part No.	Qty.	Description
26	61-9780	2	Cap-Hub
27	3272-12	2	Pin-Cotter
28	28-2480	2	Washer-Plain
29		2	Wheel And Tire ASM
29:1	99-2988	1	Tire
29:2	99-6829	1	Rim ASM
29:2:1	232-27	1	Stem-Valve
29:2:2	110513	2	Bearing-Wheel
29:2:3	302-5	1	Fitting-Grease
29:3	232-39	1	Tube-Inner
30	92-7889-03	1	RH Spindle ASM
31	99-6844-03	1	Axle-Front
32	88-5380	1	Tie Rod-Steering
33	32151-48	2	E-Ring
34	88-4830	1	Link-Drag
35	88-5510	1	Rod-Brake, Parking
36	88-5520-03	1	Bracket-Parking Brake
37	88-0890	1	Grip-Brake, Parking
38	302-5	2	Fitting-Grease



Fixed Steering Assembly

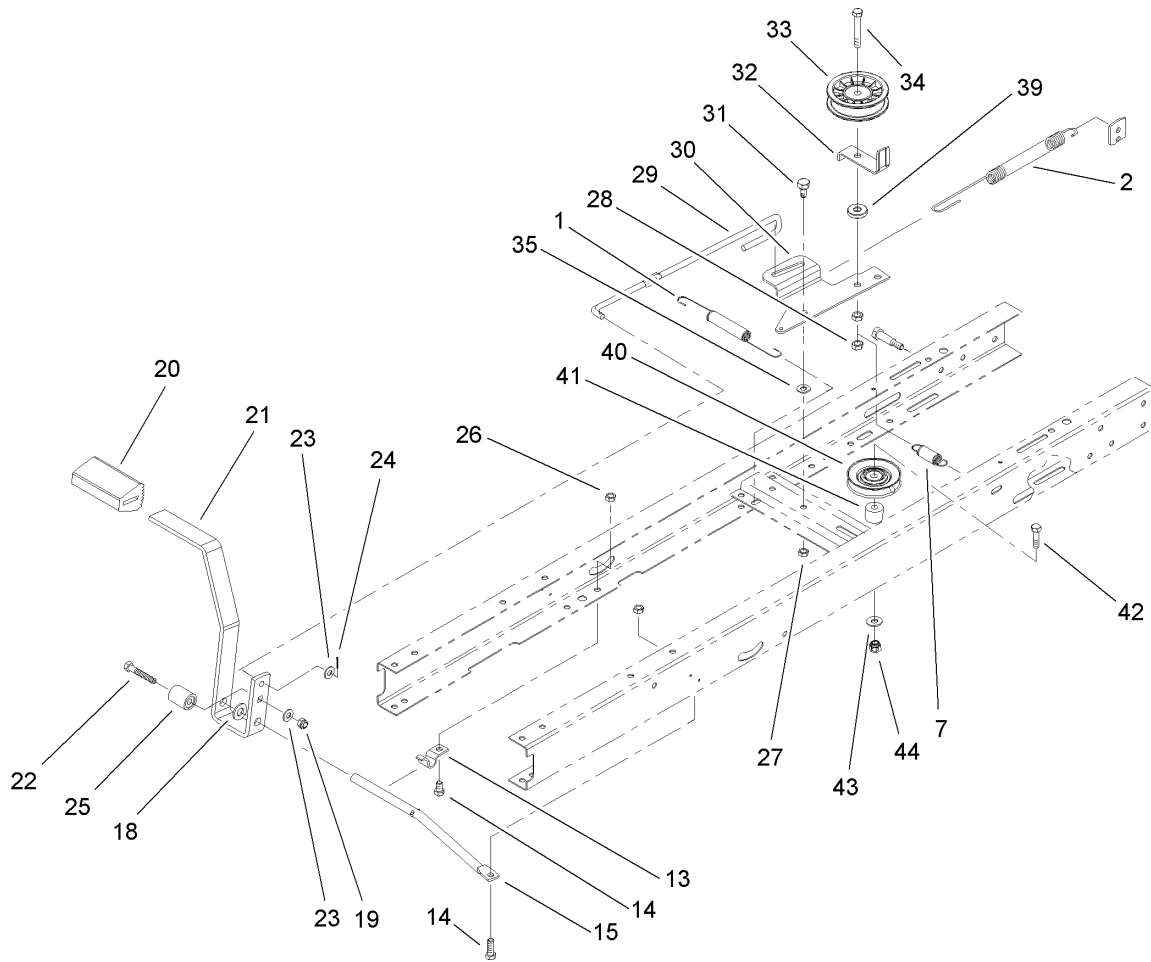
Ref	Part No.	Qty.	Description
1	98-1467	1	Steering Wheel ASM
1:1	98-1468	1	Cover-Wheel, Steering
2	32121-111	1	Pin-Roll
4	88-4190	1	Bushing-Sliding
6	3256-22	2	Washer-Flat
7	321-4	2	Screw-HH
9	3296-42	2	Nut-Lock, NI
16	88-5150	1	Bearing-Flange
17	3-6498	1	Washer-Thrust
18	32151-48	1	E-Ring
23	98-1459	1	Decal
24	88-4150	1	Plug
25	88-6380	1	Shaft-Steering, Long



Engine, Clutch and Exhaust Assembly

Ref	Part No.	Qty.	Description
1	88-4340	1	Throttle Control ASM
1:1	66-0120	1	Knob
2	27-0220	4	Screw-Special
3	88-3880	1	Gas Tank ASM (Fg50536)
3:2	46-6560	1	Bushing
3:3	104048	1	Valve-Fuel
4	107-9297	1	Hose-Fuel
5	2412-98	2	Clamp
6	322-9	3	Screw-HH
7	322-3	2	Screw-HH
8	107-4914-03	1	Stop-Clutch
9	5-4460	2	Washer-Pivot
10	107-4915	1	Pulley-Engine
11	108-9510	1	Clutch-PTO, Electric
12	112843	1	Washer
13	3212-18	1	Screw-HH
14	98-5023	1	Bumpon
15	114-3185	1	Muffler-Exhaust
16	9267154	1	Screw-HWH
20	88-4410	1	Gasket-Exhaust
21	3253-4	3	Washer-Lock
22	3274-10	3	Screw-HSH
23	3255-8	1	Washer-Lock
24	93-3855	2	Guide-Belt, RH

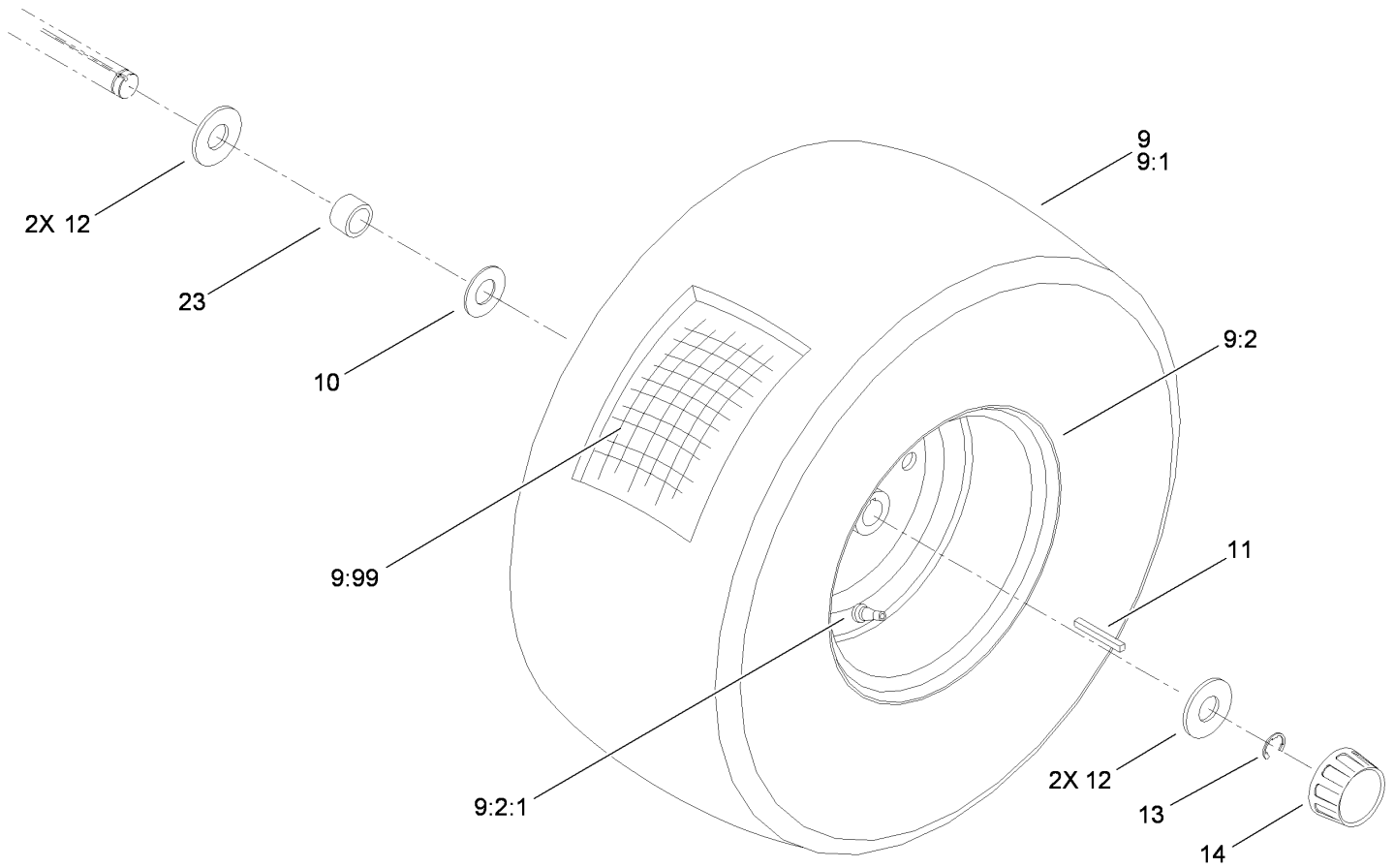
Ref	Part No.	Qty.	Description
26	32149-1	2	Nut-Keps
28	94-1952	1	Rod-Tank, Gas
29	3296-29	4	Nut-Lock, NI
30	88-4350	1	Throttle Cable ASM
31	88-3980	1	Gas Cap ASM
31:3	88-4010	1	Gasket-Cap, Gas
32		1	Engine-Briggs & Stratton, 31E777-0132-B1
35	112-4775	1	Decal-Engine
37	93-3809	1	Bracket-Ground
38	9266714	1	Screw-HWH
39	94-1951	1	Latch-Hood
40	32144-112	2	Screw-HWH
41	93-3882	1	Clip-Tinnerman
42	114-3170-03	1	Exhaust Shield ASM
43	9266714	2	Screw-HWH
44	32104-76	2	Screw
45	93-8450-03	1	Heat Shield ASM
48	88-4490	1	Reducer-Throttle, Rpm
49	3256-23	1	Washer-Flat
50	117-3925	1	Spacer



Traction Clutch Assembly

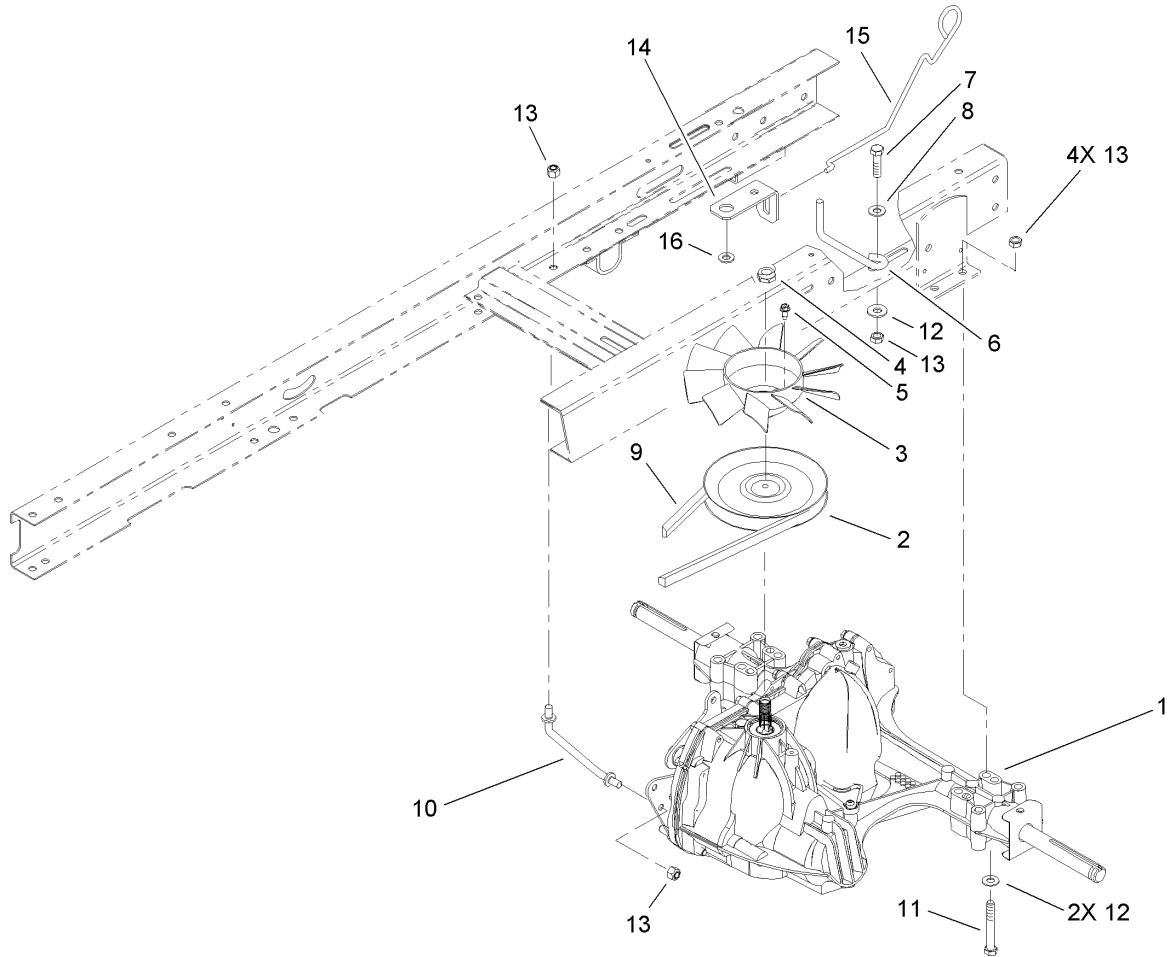
Ref	Part No.	Qty.	Description
1	27-8890	1	Spring-Extension
2	100-7422	1	Spring-Extension
7	88-6330	1	Spring-Extension
13	88-4810	1	Clamp-Pivot, Shift
14	322-3	2	Screw-HH
15	88-5500	1	Rod-Pivot, Pedal
18	3256-26	1	Washer-Flat
19	3296-47	1	Nut-Lock, NI
20	65-2920	1	Pad-Pedal
21	88-5000-03	1	Pedal-Clutch/Brake, Hydro
22	322-9	1	Screw-HH
23	3256-23	2	Washer-Flat
24	3272-10	1	Pin-Cotter
25	99-6836	1	Spacer
26	3296-29	2	Nut-Lock, NI
27	3296-29	1	Nut-Lock, NI
28	3296-59	2	Nut-Lock, NI
29	88-5270	1	Rod-Clutch/Brake
30	88-6070	1	Arm-Idler
31	37-8770	1	Bolt-Shoulder
32	88-5560	1	Guide-Idler, Belt
33	104-4160	1	Pulley-Idler
34	323-11	1	Screw-HH
35	5-4460	1	Washer-Pivot

Ref	Part No.	Qty.	Description
39	92-4890	1	Washer
40	92-7102	1	Pulley-Idler
41	92-5791	1	Spacer
42	323-10	1	Screw-HH
43	3256-3	1	Washer-Flat
44	3296-39	1	Nut-Lock, NI



Rear Wheel and Tire Assembly

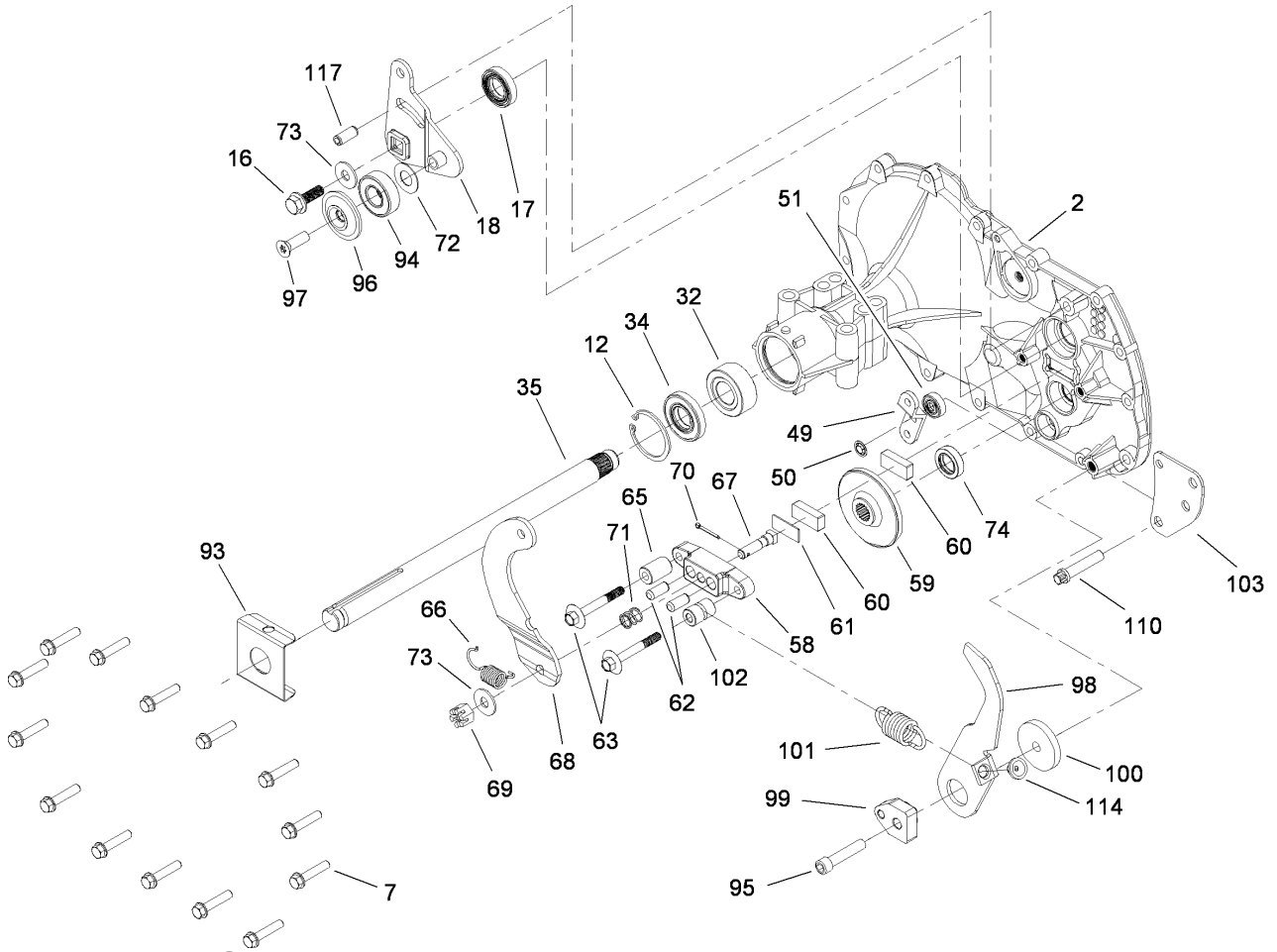
Ref	Part No.	Qty.	Description
9		2	Rear Wheel And Tire ASM
9:1	99-2996	1	Tire
9:2	88-4390	1	Rim ASM
9:2:1	232-27	1	Stem-Valve
9:99	232-41	1	Tube
10	3-6498	2	Washer-Thrust
11	7-0036	2	Key-Square
12	28-2480	4	Washer-Plain
13	32151-48	2	E-Ring
14	61-9780	2	Cap-Hub
23	104-4161	2	Spacer-Wheel



Hydro Transaxle Assembly

Ref	Part No.	Qty.	Description
1	104-1760	1	Transaxle ASM
2	104-1754	1	Pulley
3	104-2162	1	Fan
4	3296-28	1	Nut-Lock, NI
5	9134304	3	Screw-HWH
6	107-4911	1	Guide-Belt
7	322-5	1	Screw-HH
8	5-4460	1	Washer-Pivot
9	88-6280	1	V-Belt
10	100-6225	1	Strap-Torque
11	322-13	4	Screw-HH
12	3256-23	3	Washer-Flat
13	3296-29	7	Nut-Lock, NI
14	100-7406	1	Bracket-Bypass
15	100-7407	1	Rod-Bypass
16	3256-3	1	Washer-Flat

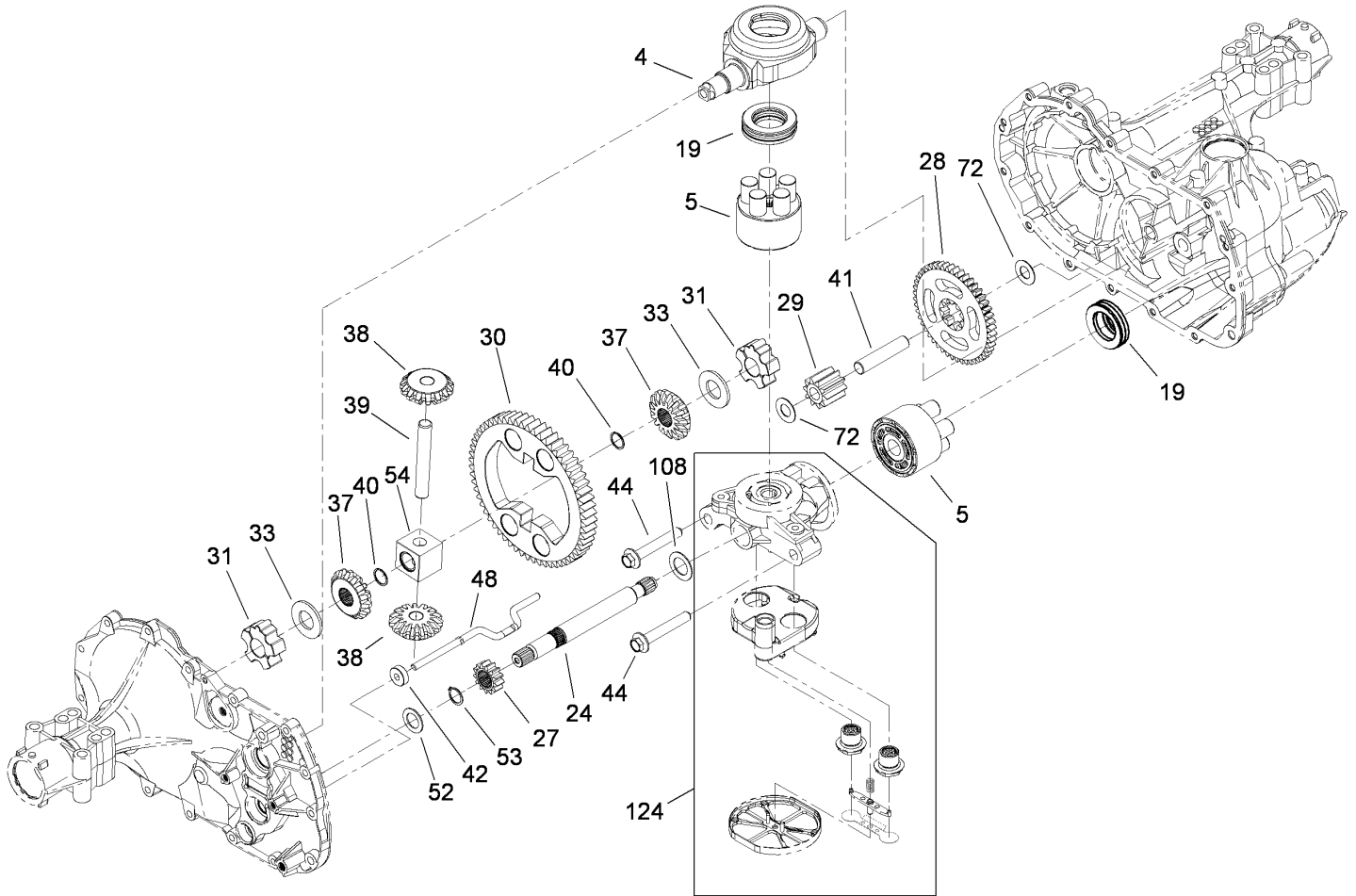
--	--	--	--



Side Housing and Bearing Assembly Transaxle No. 104-1760

Ref	Part No.	Qty.	Description
2	104-5302	1	Side Housing ASM
7	104-5305	14	Screw-HHF
12	104-5309	1	Ring-Retaining
16	104-5312	1	Screw-HF
17	104-5313	1	Seal-Lip
18	104-5314	1	Arm-Control
32	104-5321	1	Bearing-Sleeve, Outboard
34	104-5322	1	Seal-Lip
35	104-5323	1	Shaft-Axle, RH
49	104-5336	1	Arm-Bypass
50	104-5337	1	Ring-Retaining
51	104-5338	1	Seal-Lip
58	104-5343	1	Yoke-Brake
59	104-5344	1	Rotor-Brake
60	104-2171	2	Puck-Brake
61	104-2181	1	Puck-Plate
62	104-2176	2	Pin-Brake
63	104-5345	2	Screw-HF
65	104-2180	1	Spacer
66	104-2184	1	Spring-Arm, Brake (Bias)
67	104-2174	1	Bolt-SQH
68	104-5346	1	Arm-Brake
69	93-3807	1	Nut-Castle
70	3272-7	1	Pin-Cotter

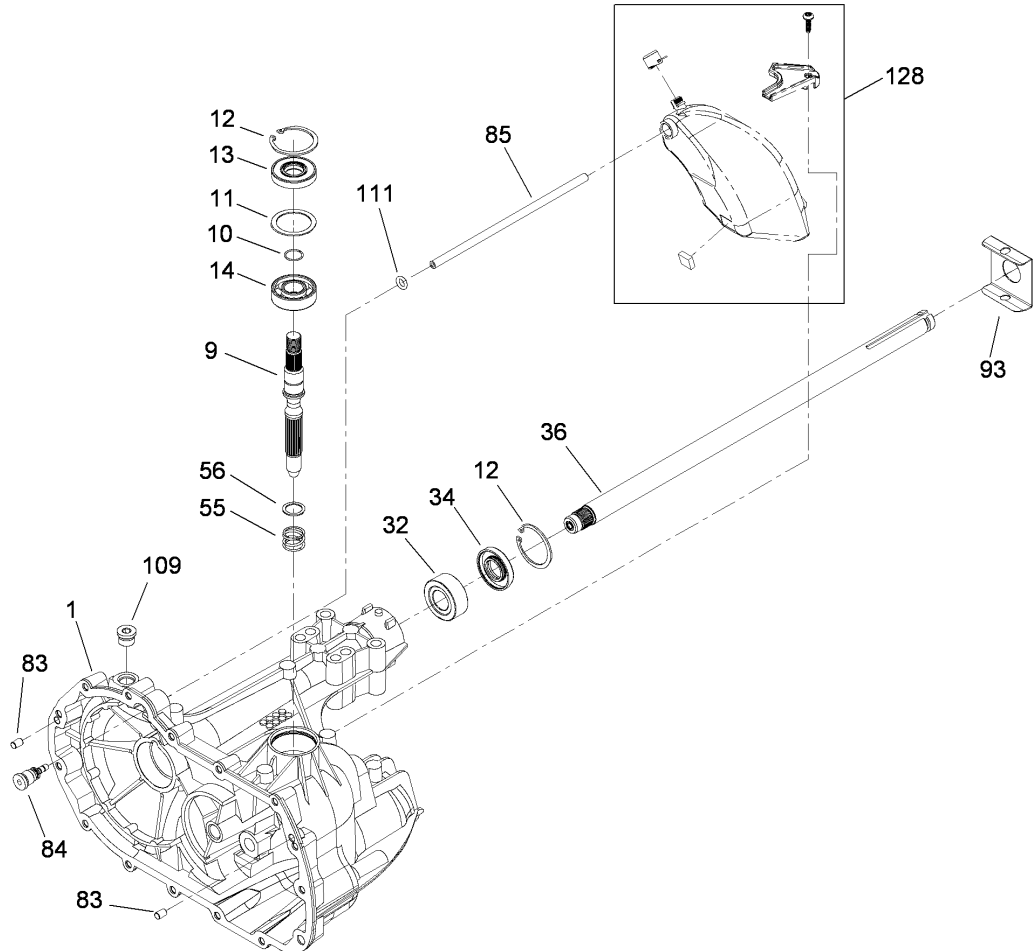
Ref	Part No.	Qty.	Description
71	104-2188	1	Spring-Brake, Anti Drag
72	94-1933	1	Washer
73	5-4460	2	Washer-Pivot
74	104-5347	1	Seal-Oil
93	104-5353	1	Clip-Spring
94	104-2156	1	Bearing
95	104-2155	1	Screw
96	104-2157	1	Spacer-Locating
97	104-2158	1	Screw-Countersunk
98	104-5354	1	Arm-Return
99	104-2119	1	Puck-Adjusting
100	104-5355	1	Washer
101	104-5356	1	Spring-Extension
102	104-5357	1	Spacer
103	104-5358	1	Bracket-Torque
110	104-2148	1	Screw-TTH
114	104-5363	1	Guide-Spring
117	104-5365	1	Pin-Spring



Gear Assembly Transaxle No. 104-1760

Ref	Part No.	Qty.	Description
4	104-5304	1	Swashplate-Trunnion
5	103-2666	2	Cylinder Block Kit
19	94-6922	2	Bearing-Thrust
24	104-5315	1	Shaft-Motor
27	104-5316	1	Gear-Pinion, 13T
28	104-5317	1	Gear
29	104-5318	1	Gear-Jackshaft, 10T
30	104-5319	1	Gear-Bull 60T
31	104-5320	2	Bearing-Sleeve
33	94-1943	2	Washer
37	104-5325	2	Gear-Miter
38	104-5326	2	Gear-Miter 15T
39	104-5327	1	Shaft
40	104-5328	2	Ring-Retaining, Spiral
41	104-5329	1	Pin-Jackshaft
42	104-5330	1	Magnet-Ring
44	94-6926	2	Bolt
48	104-5335	1	Rod-Actuator, Bypass
52	104-5339	1	Washer-Flat
53	104-5340	1	Ring-Retaining
54	104-5341	1	Bearing-Block, Center
72	94-1933	2	Washer
108	104-5360	1	Washer-Shaft, Motor
124	106-6522	1	Center Section Filter Bypass ASM

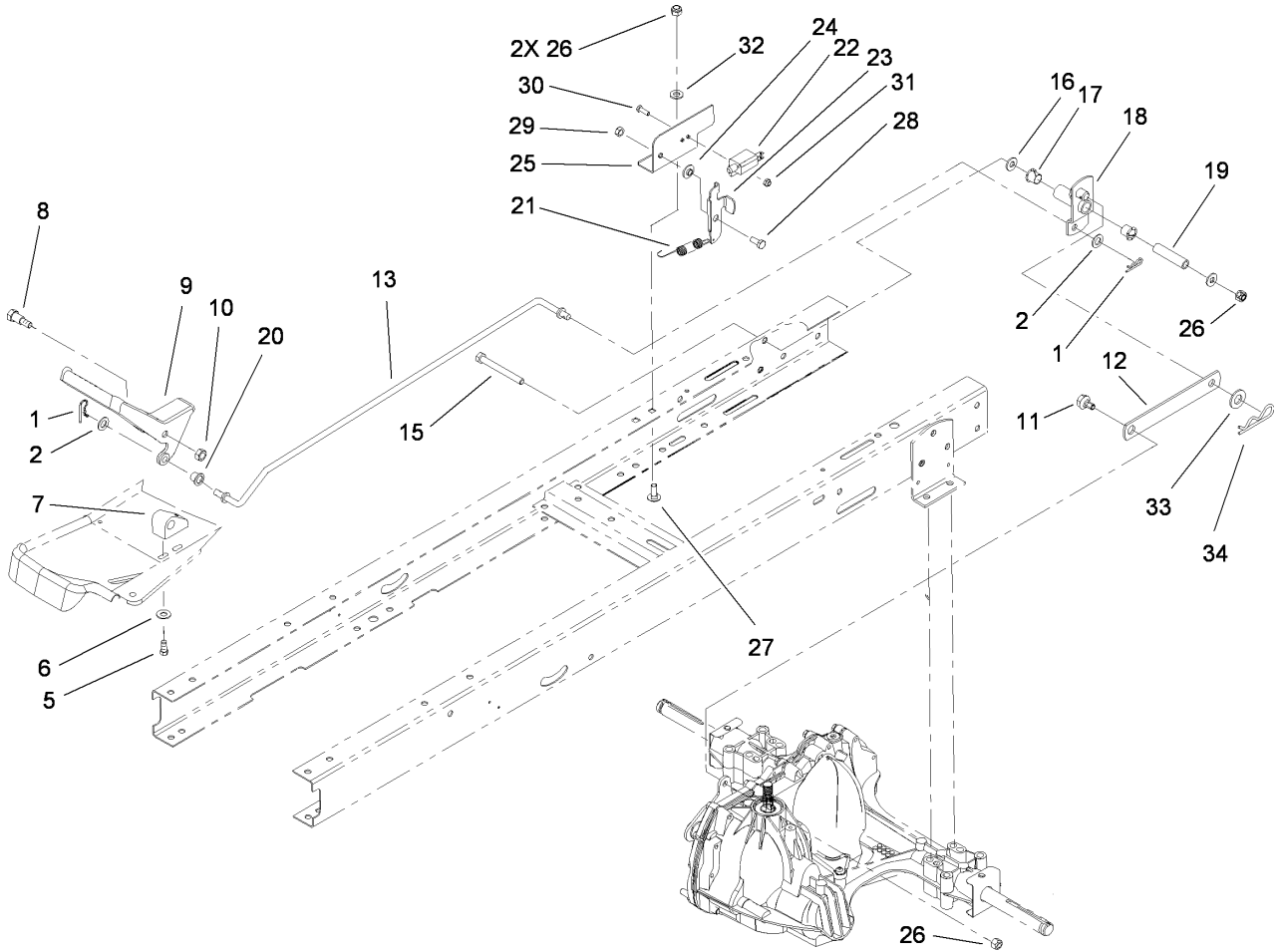
Ref	Part No.	Qty.	Description
●127	104-5368	1	Seal Kit



Main Housing and Bearing Assembly Transaxle No. 104-1760

Ref	Part No.	Qty.	Description
1	104-5301	1	Main Housing ASM
9	104-5306	1	Shaft-Input
10	104-5307	1	Ring-Retaining
11	104-5308	1	Spacer
12	104-5309	2	Ring-Retaining
13	104-5310	1	Seal-Lip
14	104-5311	1	Bearing-Ball
32	104-5321	1	Bearing-Sleeve, Outboard
34	104-5322	1	Seal-Lip
36	104-5324	1	Shaft-Axle, LH
55	94-1936	1	Spring-Block
56	94-1937	1	Washer-Thrust, Block
83	104-2170	2	Pin
84	104-5349	1	Fitting-Sae
85	104-5350	1	Hose-Expansion, Tank
93	104-5353	1	Clip-Spring
109	104-2189	1	Plug-Thread, Straight
111	104-5361	1	O-Ring
128	104-5369	1	Expansion Tank Kit

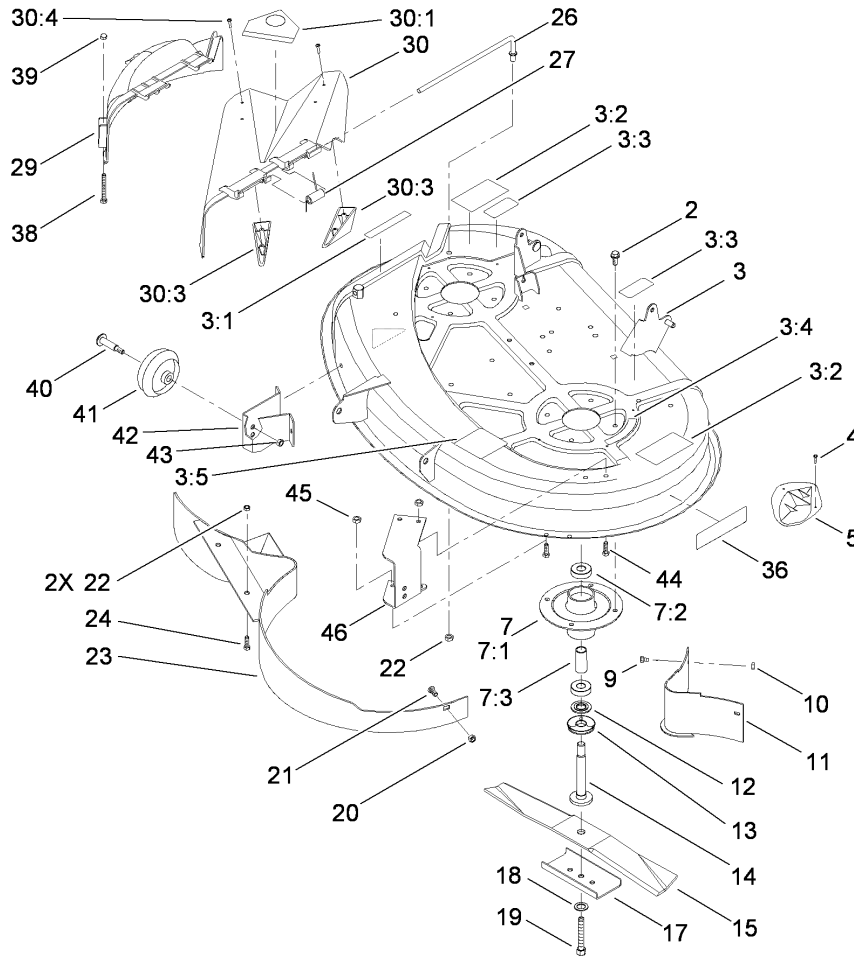
Ref	Part No.	Qty.	Description



Hydro Transaxle Control Assembly

Ref	Part No.	Qty.	Description
1	3290-307	2	Pin-Hair
2	3256-38	2	Washer-Flat
5	46-8090	2	Screw-Plastite
6	3256-22	2	Washer-Flat
7	88-4690	1	Block-Pivot
8	23-0310	1	Screw-Shoulder, HH
9	99-6120-05	1	Pedal-Control, Speed
10	3296-59	1	Nut-Lock, NI
11	37-8770	1	Bolt-Shoulder
12	99-6833	1	Link-Control, Speed
13	99-6839	1	Rod-Control, Speed
15	322-14	1	Screw-HH
16	3256-2	2	Washer-Flat
17	256-257	2	Bushing-Nyliner
18	99-6835-03	1	Pivot ASM
19	99-6832	1	Spacer-Pivot
20	99-6121	1	Bushing-Flanged
21	99-6805	1	Spring-Extension
22	95-1653	1	Switch-Pole, Single
23	99-6807	1	Bracket-Pivot
24	99-6808	1	Washer-Stepped
25	99-6806	1	Bracket-Adjustment
26	3296-29	4	Nut-Lock, NI
27	3230-18	2	Screw-CARR

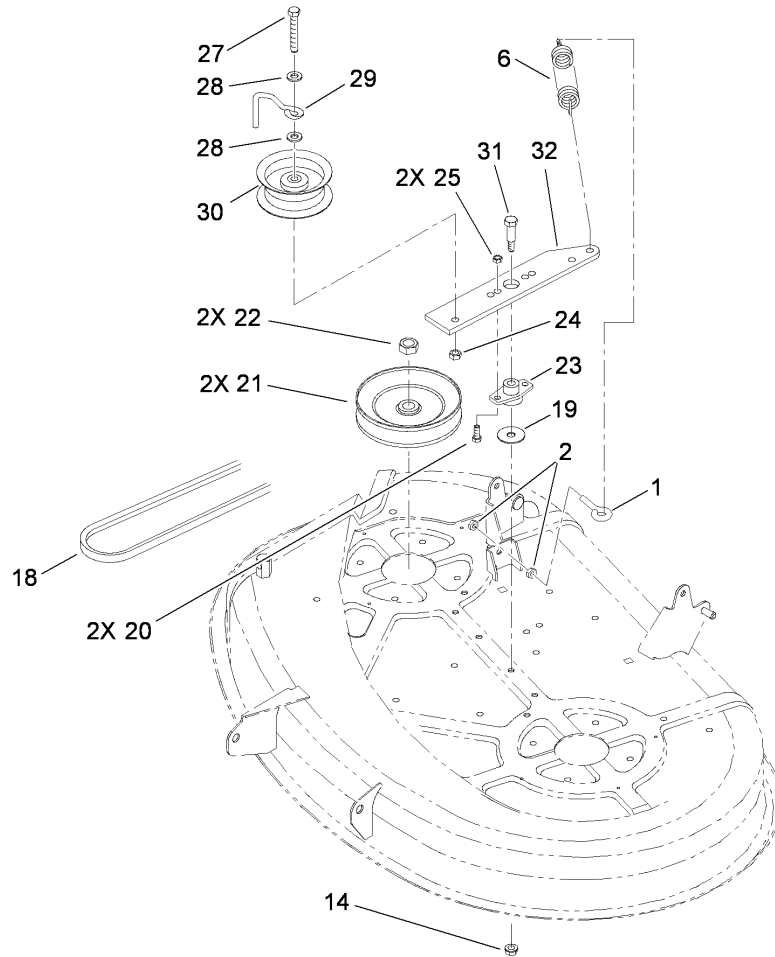
Ref	Part No.	Qty.	Description
28	99-6810	1	Screw-HH
29	3296-42	1	Nut-Lock, NI
30	3290-392	2	Screw-SHH
31	3296-1	2	Nut-Lock
32	3256-23	2	Washer-Flat
33	3256-26	1	Washer-Flat
34	9335054	1	Pin-Hair



38 Inch Deck, Spindle and Blade Assembly

Ref	Part No.	Qty.	Description
2	32144-41	8	Screw-Taptite
3	99-5847	1	Deck ASM
3:1	93-7009	1	Decal-Danger, Deflector
3:2	93-7010	2	Decal-Danger
3:3	93-6674	2	Decal-Warning
3:4	93-6677	1	Decal-Danger, Shield
3:5	93-6679	1	Decal-Routing, Belt
4	32144-111	8	Screw-PPH
5	76-2160	4	Plate-Kicker
7		2	Spindle ASM
7:1	88-4510	1	Housing-Spindle
7:2	100-1048	2	Bearing-Ball
7:3	62-3661	1	Spacer
9	321-4	2	Screw-HH
10	3296-42	2	Nut-Lock, NI
11	79-1640-03	1	Baffle ASM
12	80-4380	2	Spacer
13	80-4360	2	Shield-Bearing
14	80-4341	2	Shaft-Spindle
15	14-7799	1	Blade Kit
17	80-0510-03	2	Stiffener-Blade
18	3290-465	2	Washer-Belleville
19	26-0671	2	Screw-HH
20	3296-29	1	Nut-Lock, NI

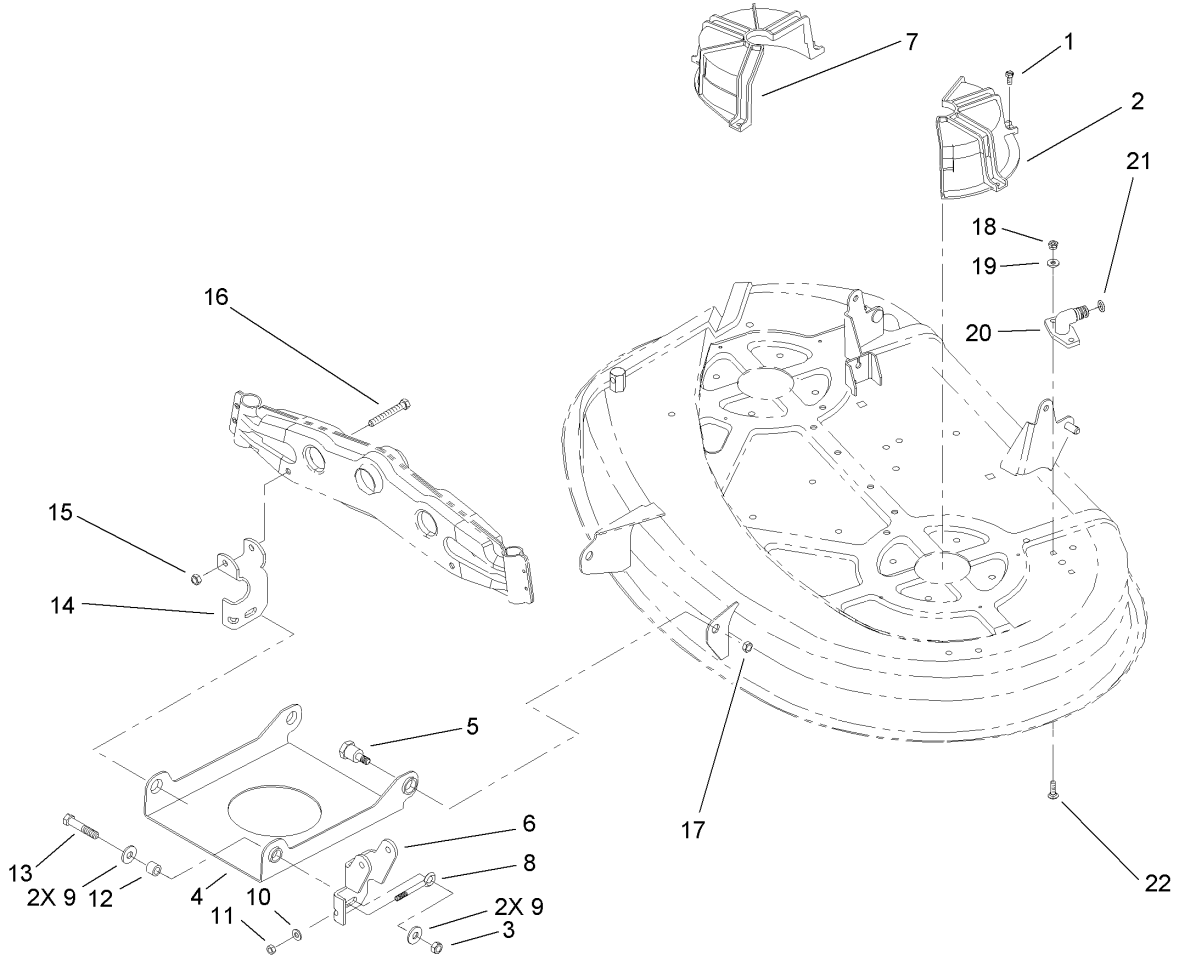
Ref	Part No.	Qty.	Description
21	3230-1	1	Bolt-CARR
22	3296-39	3	Nut-Lock, NI
23	79-1600-03	1	Baffle ASM
24	323-5	2	Screw-HH
26	95-1661	1	Rod-Pivot
27	57-6950	1	Spring
29	88-4430	1	Cover-Recycler
30	93-7695	1	Deflector ASM
30:1	93-7317	1	Decal-Danger
30:3	93-7696	2	Kicker
30:4	93-0231	4	Screw-PPH
36	106-6407	1	Decal
38	321-14	2	Screw-HH
39	32111-7	2	Nut-Cap
40	56-6591	2	Screw-Shoulder, HWH
41	701756	2	Wheel-Gage
42	88-5740-03	1	Bracket-Wheel, RH
43	3296-39	2	Nut-Lock, NI
44	322-3	6	Screw-HH
45	3296-29	6	Nut-Lock, NI
46	93-3896-03	1	Bracket-Wheel, LH



38 Inch Deck Blade Drive and Brake Assembly

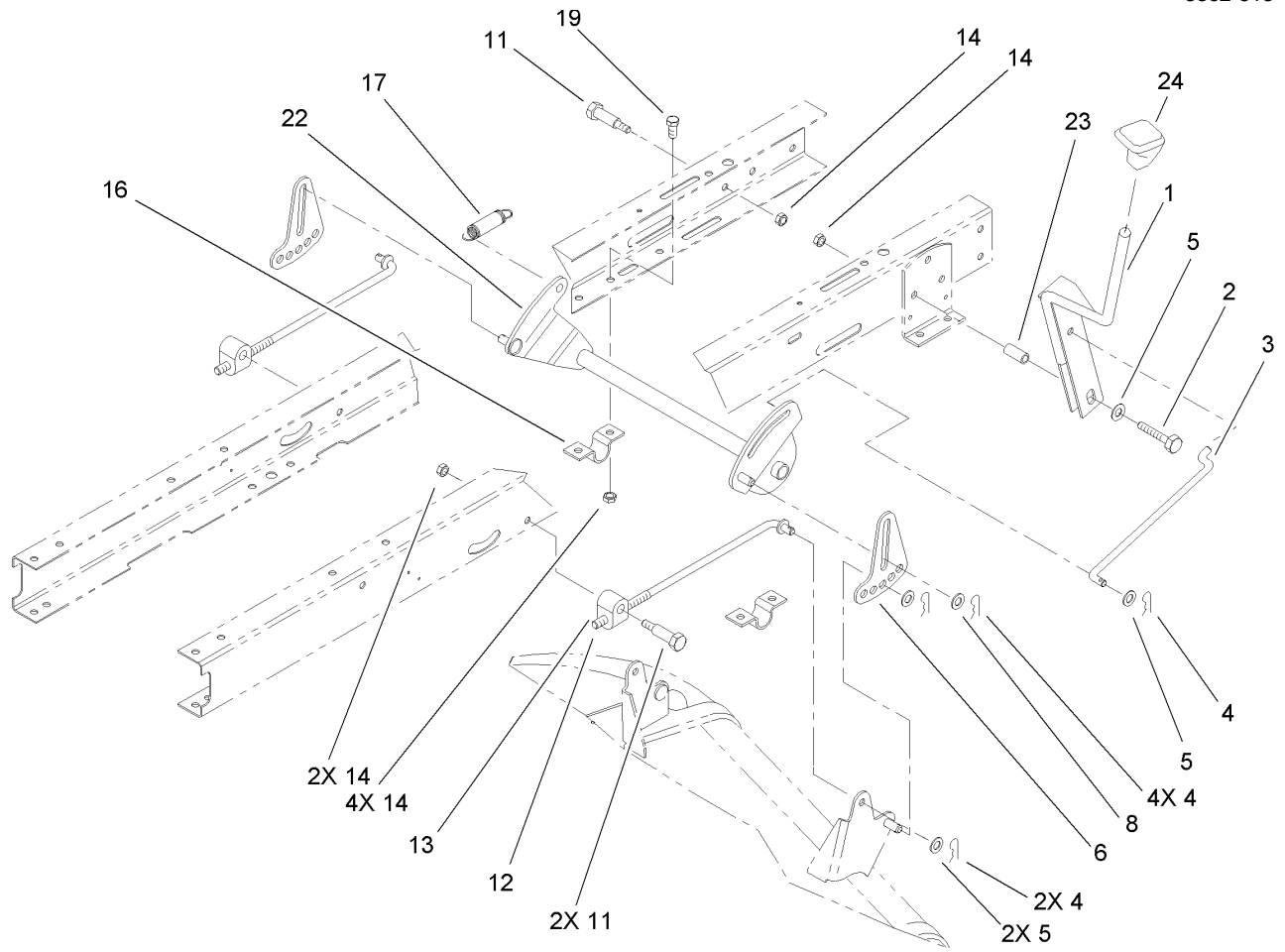
Ref	Part No.	Qty.	Description
1	85-9910	1	Eyebolt
2	3218-2	2	Nut-Jam
6	88-6130	1	Spring-Deck, Engagement
14	104-8300	1	Nut-Flange, NI
18	6738	1	V Belt
19	3256-68	1	Washer-Flat
20	322-5	2	Screw-HH
21	88-5330	2	Pully ASM
22	3219-6	2	Nut-Hex
23	88-4980	1	Bushing-Arm, Idler
24	3296-39	1	Nut-Lock, NI
25	3296-29	2	Nut-Lock, NI
27	323-12	1	Screw-HH
28	3256-24	2	Washer-Flat
29	107-7307	1	Guide-Idler, Belt
30	88-5630	1	Pulley-Idler, Flat
31	7-0030	1	Screw-Shoulder, HH
32	88-4870-03	1	Arm-Idler

--	--	--	--



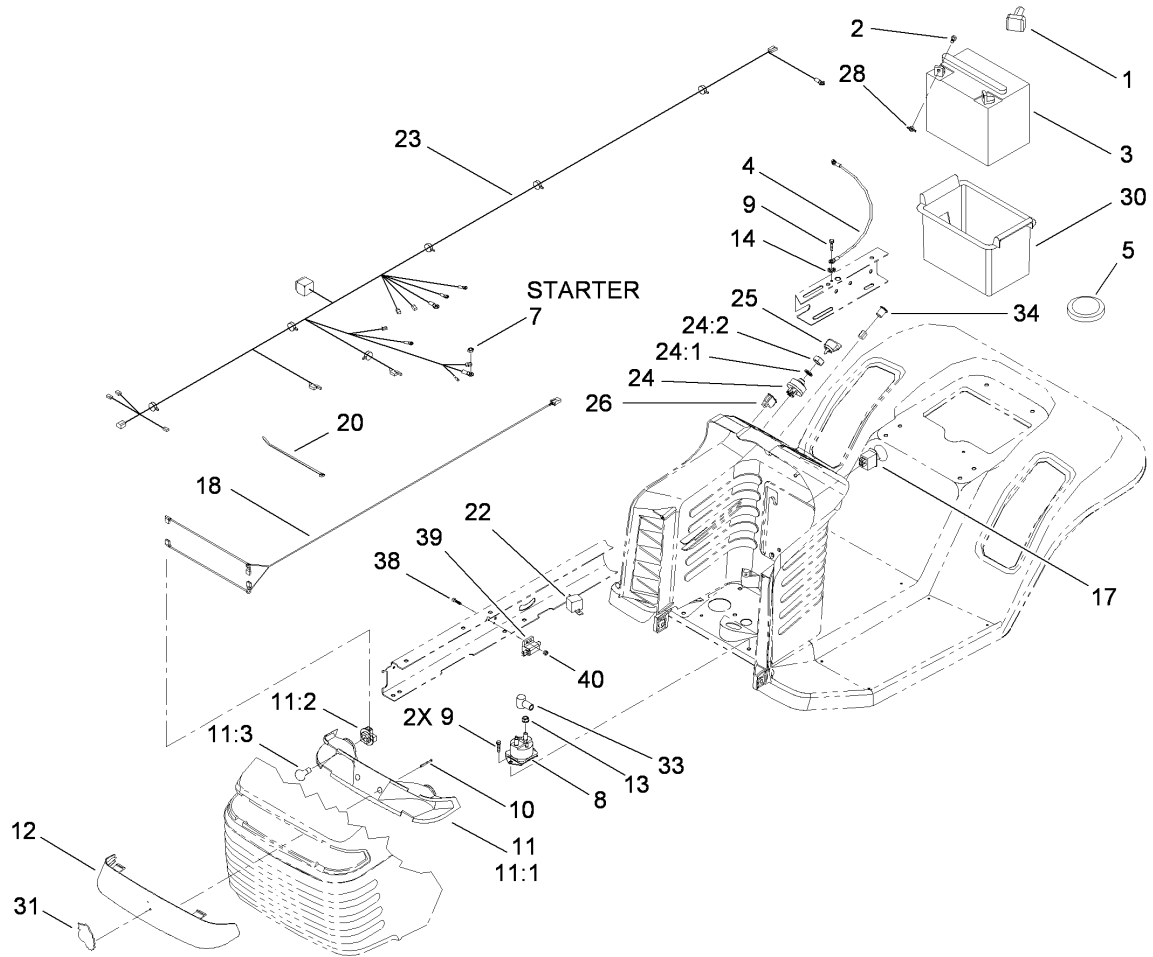
38 Inch Deck Engagement Assembly

Ref	Part No.	Qty.	Description
1	32104-76	5	Screw
2	88-4030	1	Guide-Belt, LH
3	3296-39	2	Nut-Lock, NI
4	93-3881-03	1	Pan-Deck Suspension, Front
5	94-5823	2	Bolt-Shoulder, HH
6	94-1971-03	1	Bracket-Suspension, LH
7	88-4020	1	Guide-Belt, RH
8	61-9980	2	Screw-Adjusting
9	80-6990	4	Washer-Hardened
10	3256-22	2	Washer-Flat
11	3296-42	2	Nut-Lock, NI
12	93-9847	2	Spacer
13	323-9	2	Screw-HH
14	94-1970-03	1	Bracket-Suspension, RH
15	3296-29	2	Nut-Lock, NI
16	322-12	2	Screw-HH
17	3296-23	2	Nut-Lock, NI
18	3296-16	2	Nut-Lock, NI
19	3256-1	2	Washer-Flat
20	95-2747	1	Fitting-Washout
21	46-6290	1	O-Ring, Seal
22	3229-1	2	Screw-CARR



Height-of-Cut Assembly

Ref	Part No.	Qty.	Description				
1	93-3822-03	1	HOC Lever ASM				
2	322-32	1	Screw-HH				
3	88-5900	1	Link-HOC				
4	3290-307	7	Pin-Hair				
5	3256-24	4	Washer-Flat				
6	88-5570-03	2	Link-Adjusting, HOC				
8	80-6990	4	Washer-Hardened				
11	7-0030	3	Screw-Shoulder, HH				
12	88-5450	2	Rod-Hanger, Rear				
13	88-4230	2	Trunnion-HOC				
14	3296-29	8	Nut-Lock, NI				
16	88-4730	2	Clamp-Pivot, HOC				
17	88-6460	1	Spring-Extension				
19	322-3	4	Screw-HH				
22	88-5110-03	1	Pivot ASM				
23	65-7210	1	Spacer				
24	94-5565	1	Knob-Shift				



Electrical Assembly

Ref	Part No.	Qty.	Description
1	28-8080	1	Boot-Terminal
2	321-4	2	Screw-HH
3	104-1755	1	Battery-155 Cca
4	44-8110	1	Wire ASM
5	100-3524	1	Switch-Seat
7	32149-2	1	Nut-Keps
8	106-8245	1	Solenoid-Starter
9	9266714	3	Screw-HWH
10	32144-32	2	Screw
11	88-3970	1	Headlight Reflector ASM
11:1	93-8741	1	Reflector-Light
11:2	116262	2	Socket-Headlight
11:3	7228	2	Bulb
12	88-3960	1	Lens-Headlight
13	32149-2	2	Nut-Keps
14	3255-7	2	Washer-Lock/EXT
17	93-9998	1	Switch-PTO
18	99-1935	1	Harness-Headlight
20	614249	1	Strap-Tie
22	98-7249	1	Relay
23	107-4912	1	Harness-Wire
24	88-9830	1	Key Switch ASM
24:1	3254-5	1	Washer-Tooth
24:2	218-461	1	Nut-HH

Ref	Part No.	Qty.	Description
25	63-8360	1	Key-Ignition
26	92-8875	1	Switch-Rocker
28	32103-22	2	Nut-Wing
30	88-4040	1	Box-Battery
31	95-4248	1	Emblem
33	93-3190	1	Boot-Insulator, Terminal
34	95-7652	1	Light-Indicator
38	3274-14	2	Screw-HSH
39	65-7410	1	Switch-Pole, Single
40	3296-2	2	Nut-Lock, NI

Attachments and Accessories

For 71252 - XL 380H Lawn Tractor

Product Name	Model/Part
Tire Chains	11-0430
8 Inch Rear Wheel Weight Kit	59159
9.0 cu. ft. Twin Bagger	79103
6.0 cu. ft. Easy-Empty Grass Catcher	79117
42 Inch Snow Blade	79150

NOTES

NOTES

