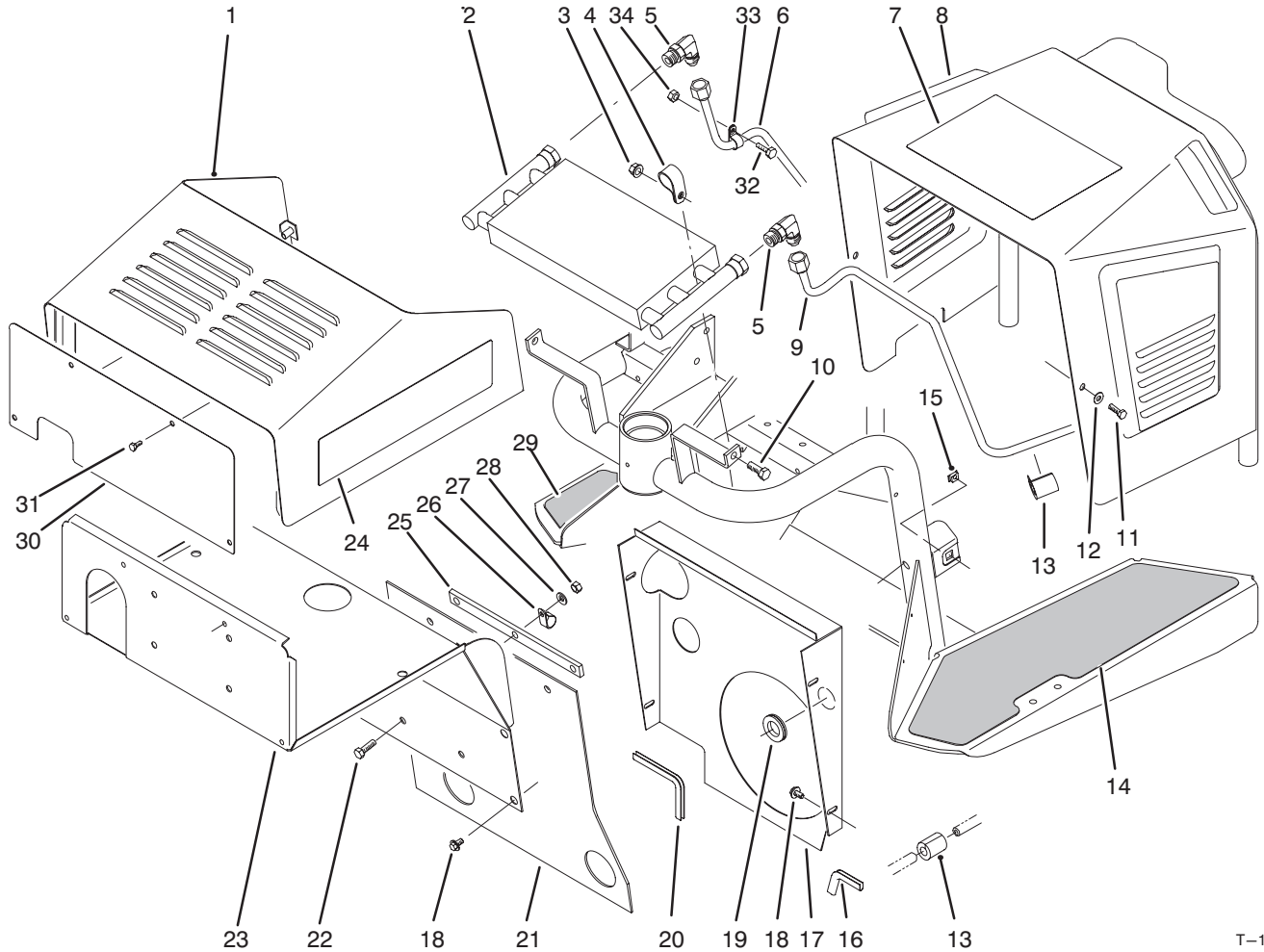




MODEL NO. 08883-40700 & UP	PARTS CATALOG
SAND PRO 3000	



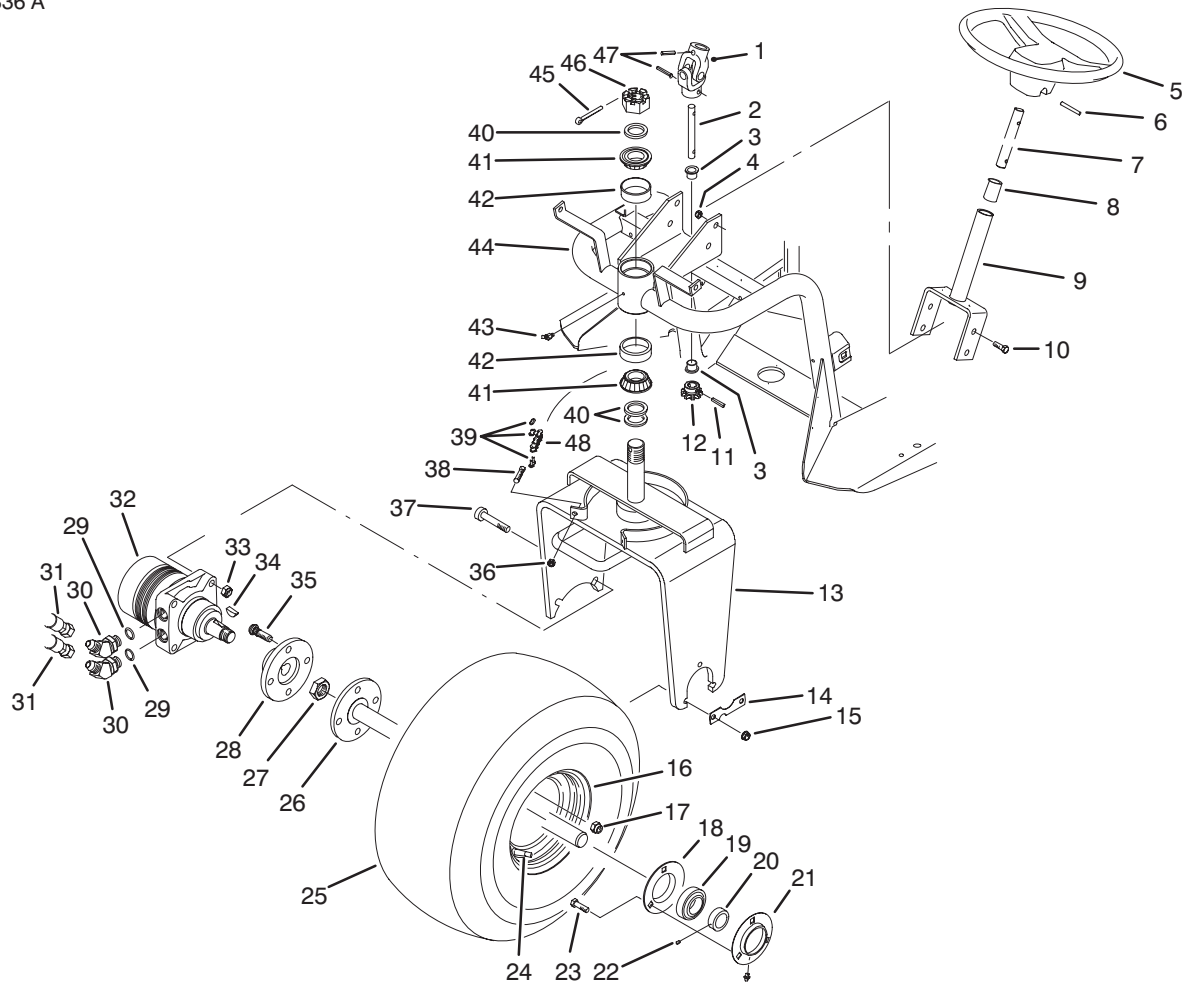
T-1847

SHROUDING & OIL COOLER ASSEMBLY

Ref. No.	Part No.	Description	No. Used
1	92-5037	Shroud - Dash	1
2	24-0760	Cooler - Oil	1
3	3290-357	Nut - Flange Lock	2
4	2412-39	Clamp - R	2
5	353-372	Fitting - Hydraulic 90°	2
6	92-7151	Tube - Hydraulic	1
7	92-1706	Decal - Operating	1
8	85-6680	Shield - Engine	1
9	92-7150	Tube - Hydraulic	1
10	323-6	Screw - Cap Hex. Hd.	2
11	322-4	Screw - Cap Hex. Hd.	2
12	3256-35	Washer - Flat	2
13	38-3400	Guard - Rubber	5
14	92-7159	Tread - Foot LH	1
15	3290-496	Nut - Tinnerman	2
16	51-3162	Trim	1
17	92-5029	Shield - Blower	1
18	46-8560	Screw - Hex. Flange Hd.	10

Ref. No.	Part No.	Description	No. Used
19	237-100	Grommet	1
20	51-3161	Trim	1
21	49-9590	Shield - Rubber	1
22	322-5	Screw - Cap Hex. Hd.	3
23	92-5048	Shield - Cooler	1
24	92-8960	Decal - SAND PRO 3000	2
25	49-9980	Retainer - Rubber Shield	1
26	2412-41	Clamp - R	1
27	3256-23	Washer - Flat	3
28	3296-29	Nut - Lock	3
29	92-7158	Tread - Foot RH	1
30	92-8962	Panel - Front	1
31	3234-33	Screw - Hex. Flange Hd.	4
32	321-4	Screw - Cap Hex. Hd.	1
33	2412-73	Clamp - R	1
34	3296-42	Nut - Lock	1
*	3290-378	Tie - Cable	1
*	92-7188	Decal - INFIELD PRO 3000	2

*Not Illustrated

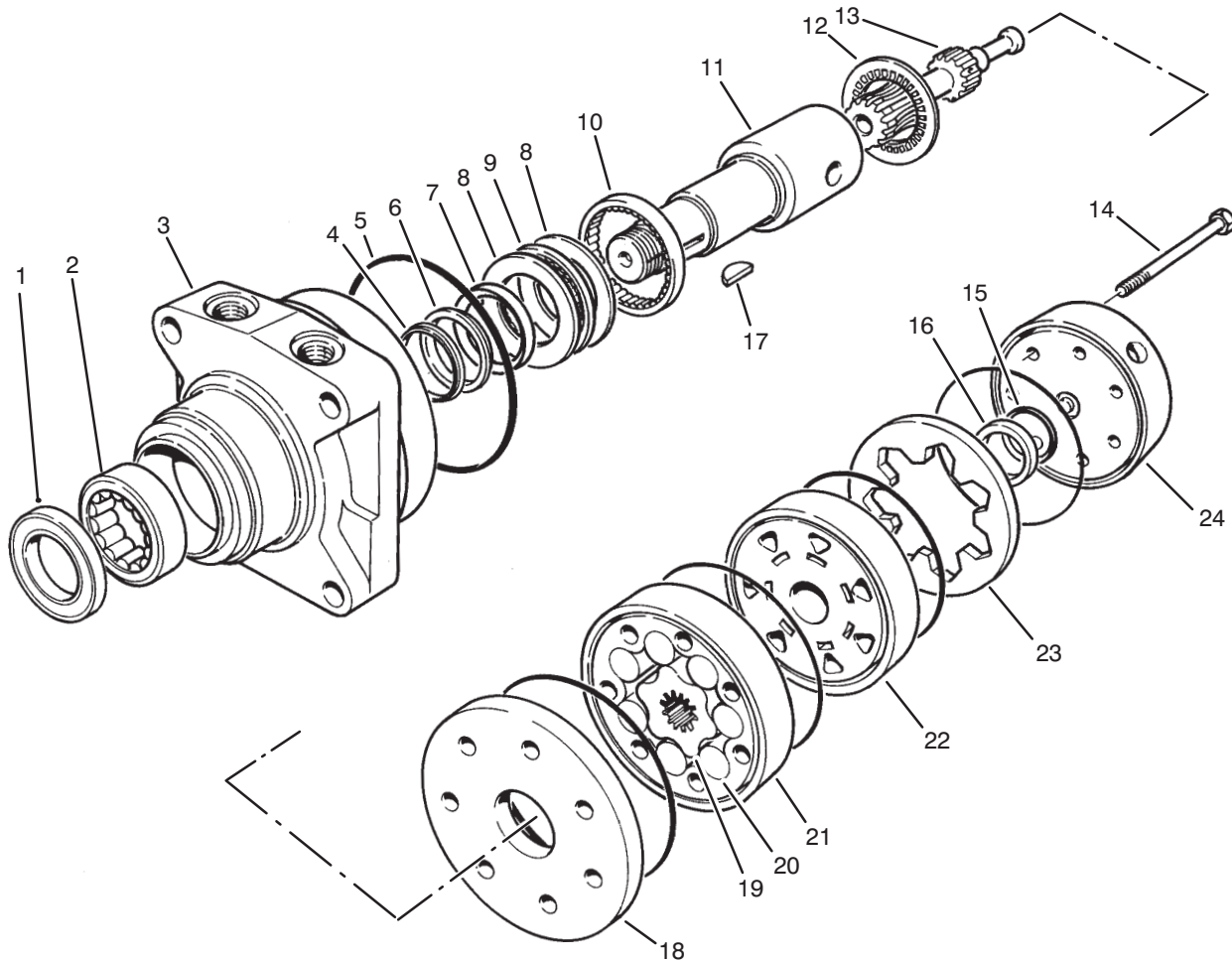


T-1848

FRONT WHEEL & STEERING ASSEMBLY

Ref. No.	Part No.	Description	No. Used
1	85-9200	Knuckle - Steering	1
2	85-9210	Shaft - Steering Lower	1
3	256-287	Bushing - Flange	2
4	3296-29	Nut - Lock	4
5	76-1420	Wheel - Steering	1
6	32121-111	Pin - Spiral	1
7	85-6610	Shaft - Steering Upper	1
8	256-185	Bushing - Sleeve	2
9	92-5035	Steering Shaft Assembly (Incl. Ref. #8)	1
10	322-5	Screw - Cap Hex. Hd.	4
11	32121-112	Pin - Spiral	1
12	85-9180	Sprocket	1
13	92-7180	Fork - Steering	1
14	88-8350	Tab - Bearing	1
15	3296-39	Nut - Lock	3
16	46-4810	Rim - Wheel	1
17	242-50	Nut - Lug	4
18	85-8950	Flange - Bearing	1
19	251-352	Bearing Assembly (Incl. Ref. #20 & 22)	2
20		Collar - Locking	1
21	85-8940	Flange - Bearing Lube	1
22		Screw - Set	2
23	323-29	Screw - Cap Hex. Hd.	3
24	232-35	Valve - Stem	1
25	85-8290	Tire	1

Ref. No.	Part No.	Description	No. Used
26	92-8969	Axle - Front	1
27	26-3790	Nut - Hex.	1
28	17-4710	Hub - Wheel	1
29	237-80	Seal - O-Ring	2
30	353-427	Fitting - Hydraulic 45° (Incl. Ref. #29)	2
31	51-0600	Hose - Hydraulic	2
32	75-9830	Hydraulic Motor Assembly (Incl. Ref. #34)	1
33	3296-23	Nut - Lock	2
34	3257-42	Key - Woodruff	1
35	10-6830	Stud - Drive	4
36	3296-4	Nut - Lock	2
37	3274-93	Screw - Hex. Socket Hd.	2
38	18-6380	Pin - Steering Adjustment	2
39	2710-11	Link - Connecting	2
40	18-6320	Washer - Steering	3
41	254-70	Cone - Bearing	2
42	254-61	Cup - Bearing	2
43	302-11	Fitting - Grease	1
44	92-5000	Frame Assembly (Incl. Ref. #3 & 43)	1
45	3272-37	Pin - Cotter	1
46	32136-9	Nut - Slotted	1
47	32121-15	Pin - Spiral	2
48	92-5039	Chain - Steering	1



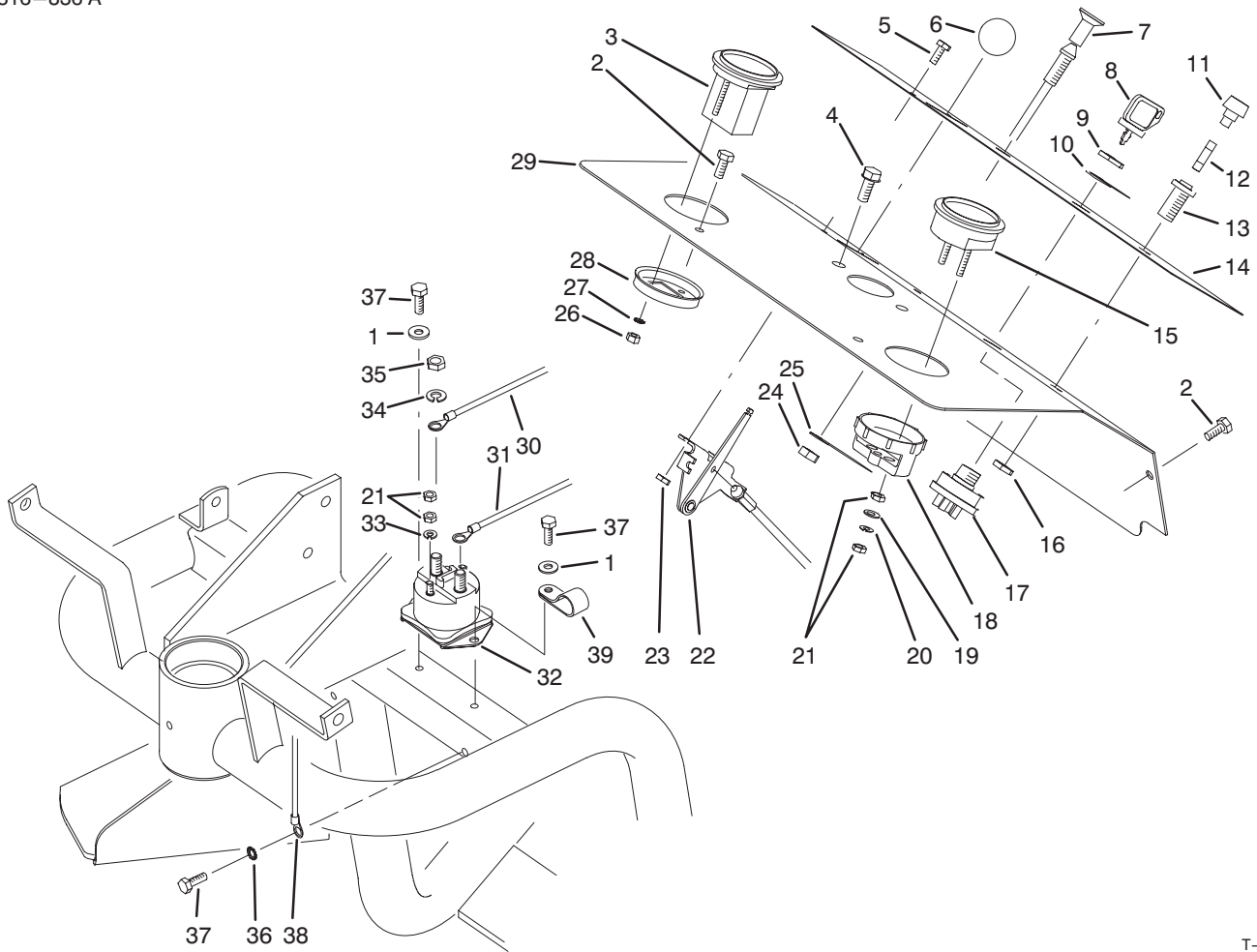
T-0983

HYDRAULIC DRIVE MOTOR FRONT NO. 75-9830

Ref. No.	Part No.	Description	No. Used
1		Seal - Dirt & Water	1
2		Bearing	1
3		Housing	1
4		Washer - Backup	1
5		Seal - Rings	5
6		Washer - Backup	1
7		Seal - Inner	1
8		Washer - Thrust	2
9		Bearing - Thrust	1
10		Bearing	1
11	76-0860	Shaft - Coupling	1
12	76-0850	Bearing - Thrust	1
13	76-0930	Link - Drive	7
14	76-1030	Screw - Cap Hex. Hd.	1
15		Seal - Commutator	1
16		Commutator	1

Ref. No.	Part No.	Description	No. Used
17	3257-42	Key - Woodruff	1
18	76-0870	Plate - Wear	1
19		Rotor	1
20		Vane	7
21		Stator	1
22	76-0840	Manifold	1
23		Ring - Commutator	1
24	76-0940	Assembly - Cover, End	1
*	76-0950	Rotor Set (Incl. Ref. #19-21)	1
*	76-0880	Assembly - Commutator (Incl. Ref. #15, 16 & 23)	1
*	76-0800	Kit - Seal (Incl. Ref. #1, 4-7 & 15)	1
*	76-0810	Assembly - Housing (Incl. Ref. #2, 3 & 8-10)	1

*Not Illustrated

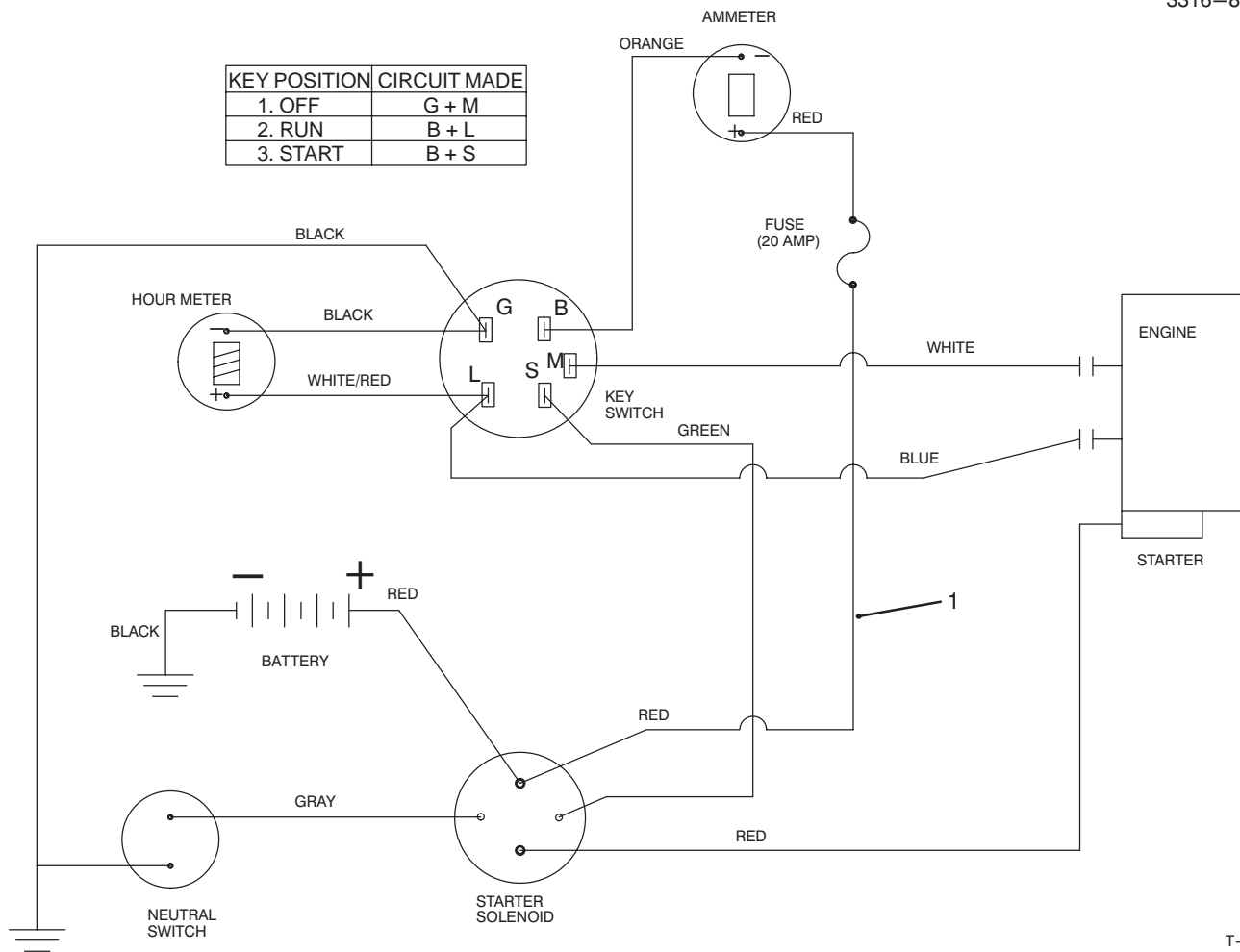


T-1747

DASH PANEL ASSEMBLY

Ref. No.	Part No.	Description	No. Used
1	3256-22	Washer - Flat	2
2	3234-33	Screw - Cap Hex. Hd.	4
3	66-2950	Hourmeter Assembly (Incl. Ref. #26-28)	1
4	32144-11	Screw - Hex. Flange Hd.	2
5	32105-2	Screw - Cap Hex. Hd.	2
6	233-25	Knob - Throttle	1
7	92-7155	Choke Control Assembly	1
8	63-8360	Key - Ignition	2
9	218-461	Nut - Hex.	1
10	3254-5	Washer - Lock ITLW	1
11		Cap - Fuse Holder	1
12	218-598	Fuse - 20 Amp.	1
13	218-489	Fuse Holder Assembly (Incl. Ref. #11 & 16)	1
14	92-7157	Decal - Dash	1
15	83-0820	Ammeter Assembly (Incl. Ref. #18-21)	1
16		Nut - Hex.	1
17	23-0660	Ignition Switch Assembly (Incl. Ref. #9 & 10)	1
18	39-9600	Clamp - Mounting	1

Ref. No.	Part No.	Description	No. Used
19	3256-21	Washer - Flat	2
20	3254-1	Washer - Lock	2
21	3219-14	Nut - Hex.	8
22	92-7156	Control - Throttle	1
23	3296-12	Nut - Lock	2
24	3219-3	Nut - Hex.	1
25	3254-6	Washer - Lock ITLW	1
26	3217-25	Nut - Hex.	2
27	3255-20	Washer - Lock ITLW	2
28		Clamp - Mounting	1
29	92-5024	Panel - Dash	1
30	86-7570	Wire - Battery-Solenoid	1
31	86-7440	Wire - Solenoid-Starter	1
32	28-4210	Solenoid	1
33	3253-17	Washer - Lock	2
34	3253-4	Washer - Lock	2
35	3218-13	Nut - Jam	2
36	3255-7	Washer - Lock	1
37	32104-42	Screw - Cap Hex. Hd.	3
38	92-5046	Wire Harness Assembly	1
39	2412-73	Clamp - R	1

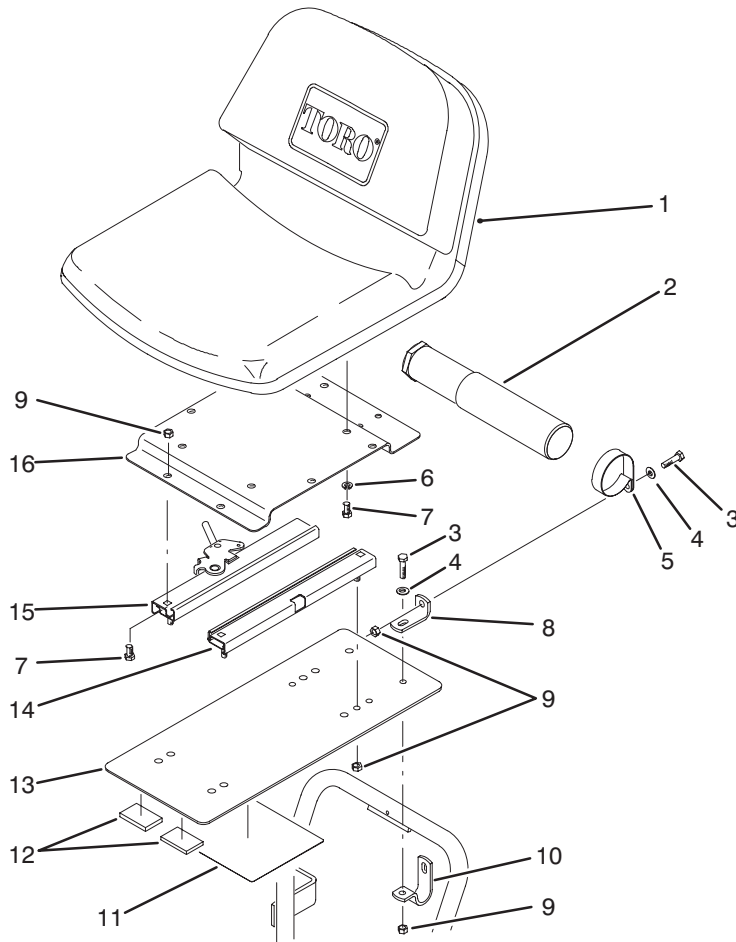


T-1827

ELECTRICAL SCHEMATIC

Ref. No.	Part No.	Description	No. Used
1	92-5046	Harness - Wire	1

Ref. No.	Part No.	Description	No. Used

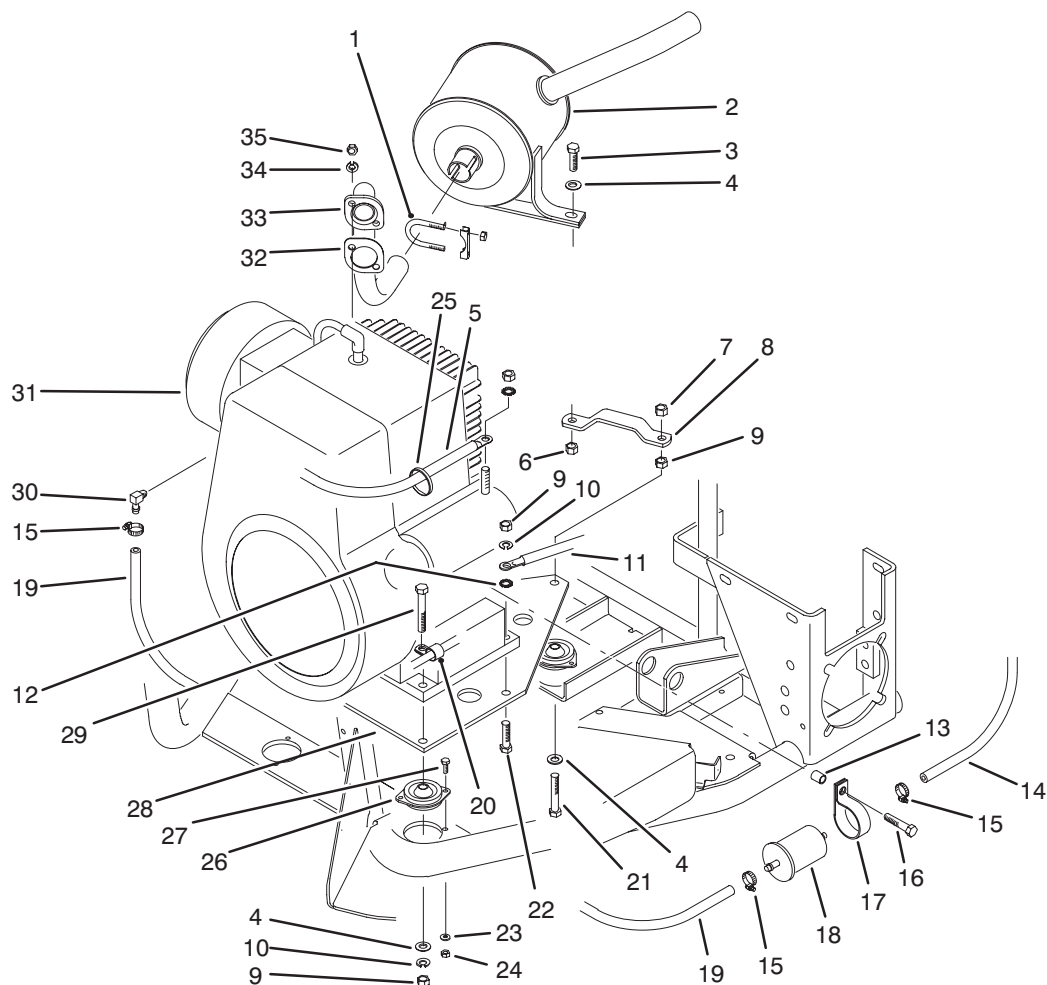


T-1854

SEAT ASSEMBLY

Ref. No.	Part No.	Description	No. Used
1	92-8976	Seat Assembly	1
2	74-0720	Tube - Manual	1
3	322-6	Screw - Cap Hex. Hd.	4
4	3256-3	Washer - Flat	4
5	2412-133	Clamp - R	2
6	3253-4	Washer - Lock	4
7	322-2	Screw - Cap Hex. Hd.	8
8	92-8973	Angle	2

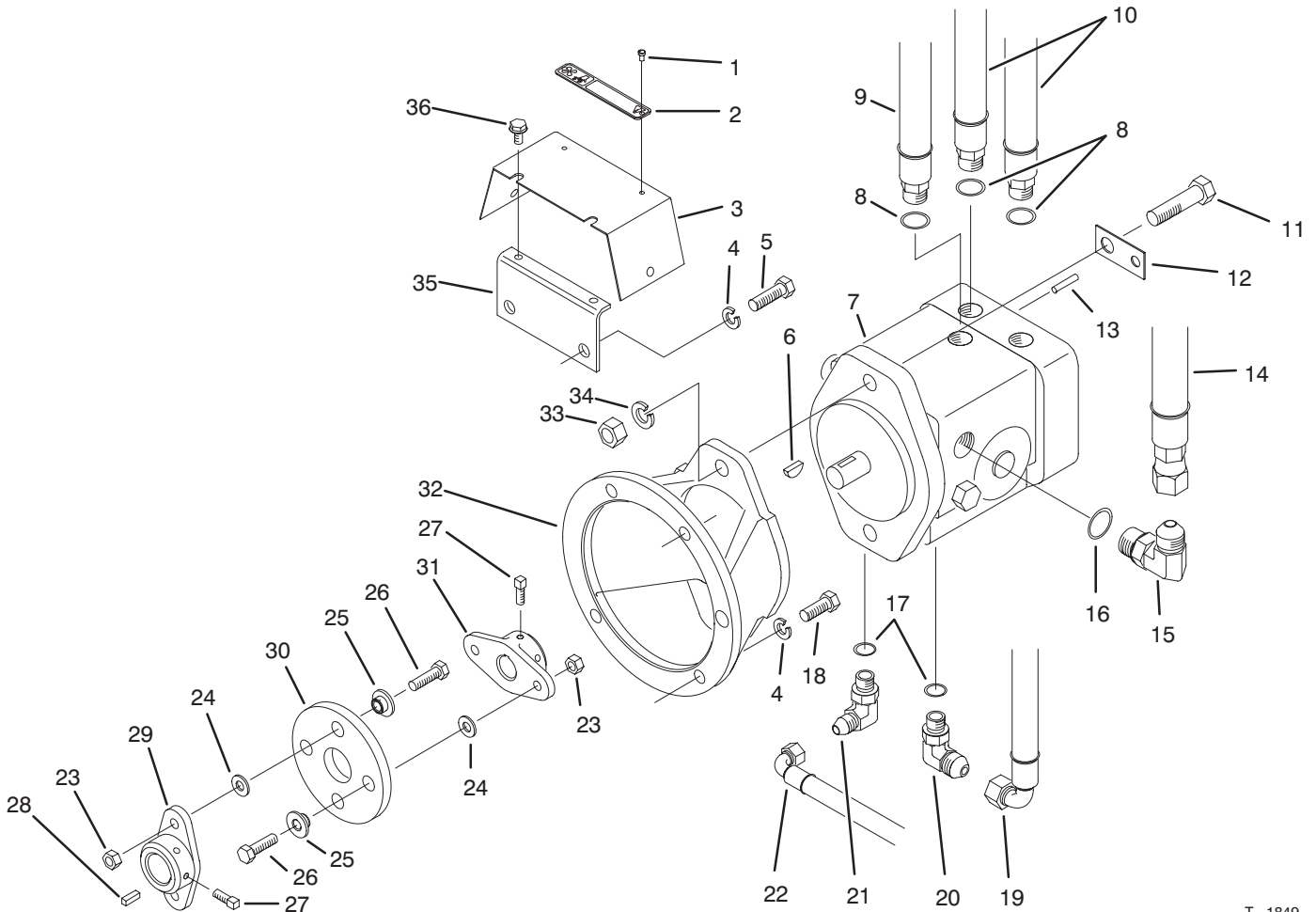
Ref. No.	Part No.	Description	No. Used
9	3296-29	Nut - Lock	12
10	92-8972	Clamp - Seat	2
11	92-8965	Decal - Service	1
12	74-0340	Cushion - Rubber	2
13	92-7170	Base - Seat	1
14	51-0780	Slider - Seat	1
15	51-0790	Adjuster - Seat	1
16	86-7610	Plate - Seat	1



T-1749

ENGINE INSTALLATION ASSEMBLY

Ref. No.	Part No.	Description	No. Used	Ref. No.	Part No.	Description	No. Used
1	2412-37	Muffler Clamp Assembly	1	19	51-0670	Hose - Fuel	1
2	51-0700	Muffler	1	20	2412-81	Clamp - R	1
3	323-7	Screw - Cap Hex. Hd.	1	21	323-11	Screw - Cap Hex. Hd.	1
4	3256-24	Washer - Flat	3	22	323-8	Screw - Cap Hex. Hd.	2
5	86-7440	Wire - Solenoid-Starter	1	23	3256-14	Washer - Flat	6
6	3296-44	Nut - Lock	1	24	3296-12	Nut - Lock	6
7	3296-59	Nut - Lock	1	25	3290-378	Tie - Cable	1
8	49-9580	Bracket - Muffler	1	26	18-8000	Mount - Rubber	3
9	3217-7	Nut - Hex.	5	27	3290-134	Screw - Cap Hex. Hd.	6
10	3253-5	Washer - Lock	4	28	49-9500	Base - Engine	1
11	86-7450	Wire - Battery-Ground	1	29	323-13	Screw - Cap Hex. Hd.	2
12	3255-9	Washer - Lock ETLW	1	30	67-1690	Fitting - Fuel 90°	1
13	61-3230	Spacer - Fuel Filter	1	31	16-3989	Engine Assembly (Incl. Ref. #32)	1
14	84-8050	Hose - Fuel	1	32	2210-118	Gasket - Exhaust	1
15	2412-108	Clamp - Hose	3	33	49-9550	Pipe - Exhaust	1
16	323-9	Screw - Cap Hex. Hd.	1	34	3253-4	Washer - Lock	2
17	2412-44	Clamp - R	1	35	3217-6	Nut - Hex.	2
18	18-1520	Filter - Fuel	1				

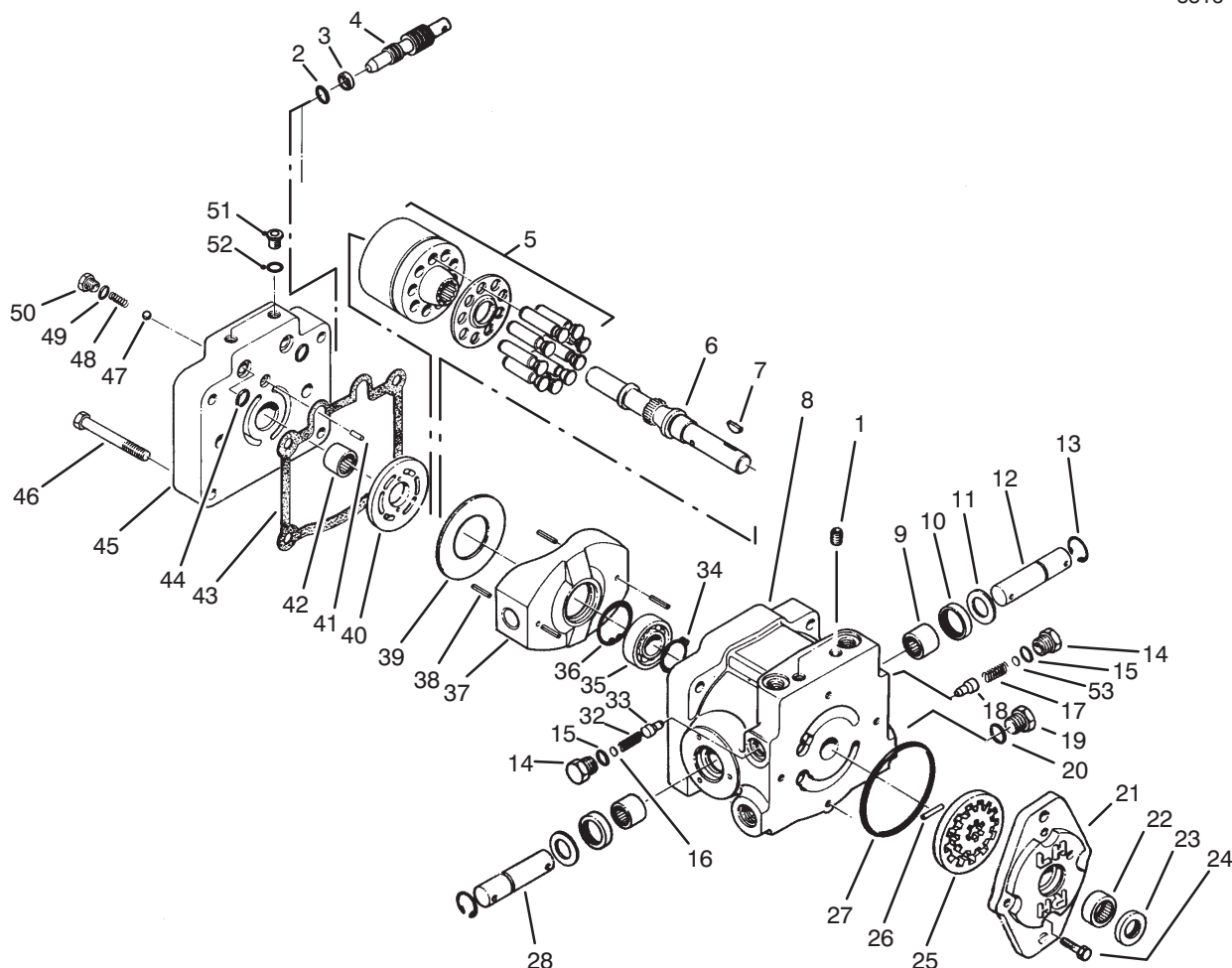


T-1849

HYDRAULIC PUMP INSTALLATION ASSEMBLY

Ref. No.	Part No.	Description	No. Used
1	3269-32	Rivet - Pop	2
2	76-8750	Plate - Warning	1
3	92-8967	Shield - Dampener	1
4	3253-5	Washer - Lock	4
5	323-7	Screw - Cap Hex. Hd.	2
6	3257-32	Key - Woodruff	1
7	92-8790	Hydraulic Pump Assembly (Incl. Ref. #6)	1
8	237-79	Seal - O-Ring	3
9	21-5360	Hydraulic Hose Assembly (Incl. Ref. #8)	1
10	21-5370	Hydraulic Hose Assembly (Incl. Ref. #8)	2
11	325-8	Screw - Cap Hex. Hd.	2
12	26-2950	Standoff - Wire	1
13	32121-16	Pin - Roll	1
14	53-9470	Hose - Hydraulic	1
15	353-370	Fitting - Hydraulic 90° (Incl. Ref. #16)	1
16	237-80	Seal - O-Ring	1
17	237-42	Seal - O-Ring	2

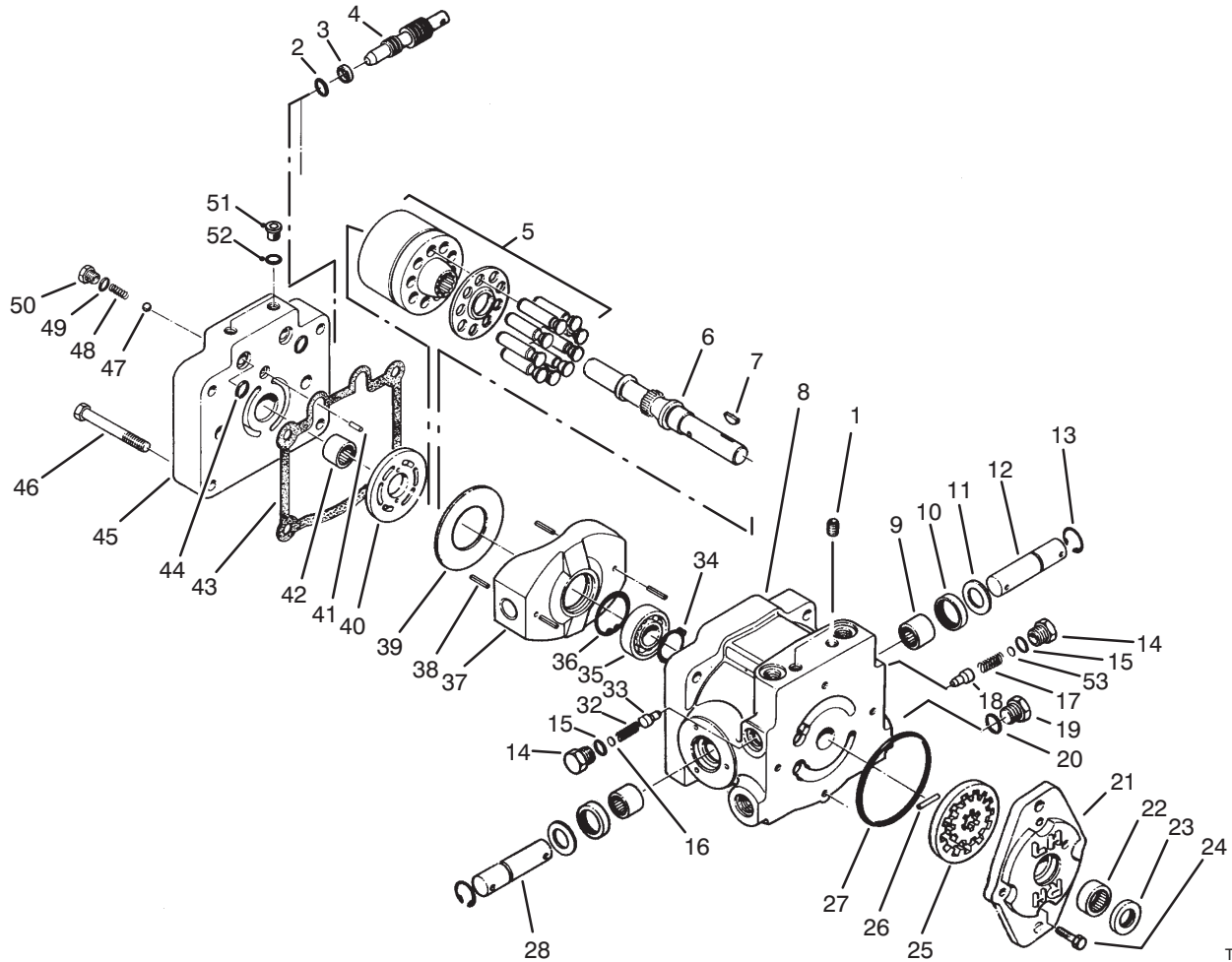
Ref. No.	Part No.	Description	No. Used
18	323-6	Screw - Cap Hex. Hd.	2
19	51-0590	Hose - Hydraulic	1
20	353-511	Fitting - Hydraulic 90° (Incl. Ref. #17)	1
21	353-374	Fitting - Hydraulic 90° (Incl. Ref. #17)	1
22	49-9970	Hose - Hydraulic	1
23	3296-29	Nut - Lock	4
24	3256-23	Washer - Flat	4
25	27-6600	Spacer - Coupler	4
26	322-16	Screw - Cap Hex. Hd.	4
27	3241-5	Screw - Square Hd. Set	4
28	10-7070	Key - Square	1
29	27-1960	Hub - Engine	1
30	44-2230	Coupling - Rubber	1
31	49-9600	Hub - Pump	1
32	37-8030	Mount - Pump	1
33	3217-9	Nut - Lock	2
34	3253-7	Washer - Lock	2
35	92-8963	Mount - Cover	1
36	46-8560	Screw - Hex. Flange Hd.	3



T-0245

HYDRAULIC PUMP ASSEMBLY NO. 92-8790

Ref. No.	Part No.	Description	No. Used	Ref. No.	Part No.	Description	No. Used
1	285-17	Plug - Pipe	2	26	25-2530	Pin - Straight	1
2	237-22	O-Ring	1	27	237-95	O-Ring	1
3	25-2630	Ring	1	28	49-8480	Shaft - Trunion	1
4	88-8220	Valve - By-Pass	1	32	25-2480	Spring - Charge Relief	1
5	25-2600	Kit - Cylinder Block	1	33	83-7260	Cone - Relief Valve	1
6	67-8020	Shaft - Pump	1	34	32120-15	Ring - Retaining	1
7	3257-32	Key - Woodruff	1	35	251-8	Bearing - Ball	1
8	54-7890	Kit - Housing (Incl. Ref. #1, 8-10)	1	36	32120-11	Ring - Retaining	1
9	252-82	Bearing - Needle	2	37	25-2450	Plate - Swash	1
10	25-3210	Seal - Lip	2	38	32121-91	Pin - Spring	3
11	25-2510	Washer	2	39	25-2380	Plate - Thrust	1
12	28-3670	Shaft - Trunion	1	40	25-2390	Plate - Valve	1
13	32151-46	Ring - Retaining	2	41	25-2430	Pin - Straight	1
14	25-2460	Plug	2	42	46-8400	Bearing - Needle	1
15	237-86	O-Ring	2	43	25-2400	Gasket	1
16	49-7840	Kit - Shim Pack	2	44	237-30	O-Ring	2
17	25-2570	Spring - Relief Valve	1	45	323-11	Cap - End, Pump	1
18	83-7260	Cone - Relief Valve	1	46	323-11	Screw - Cap Hex Hd.	4
19	88-8210	Plug - Standard Thread	1	47	25-2490	Ball - Check Valve	2
20		O-Ring	1	48	25-2640	Spring - Valve Check	2
21	25-2690	Housing - Charge Pump	1	49	237-86	O-Ring	2
22	67-8050	Bearing - Needle	1	50	25-2650	Plug - Check Valve	2
23	67-8060	Seal - Lip	1	51	92-8776	Plug Assembly (Incl. Ref. #52)	2
24	322-4	Screw - Cap, Hex. Hd.	4	52	92-8777	Seal - O-Ring	2
25	25-2680	Assembly - Gerator	1				



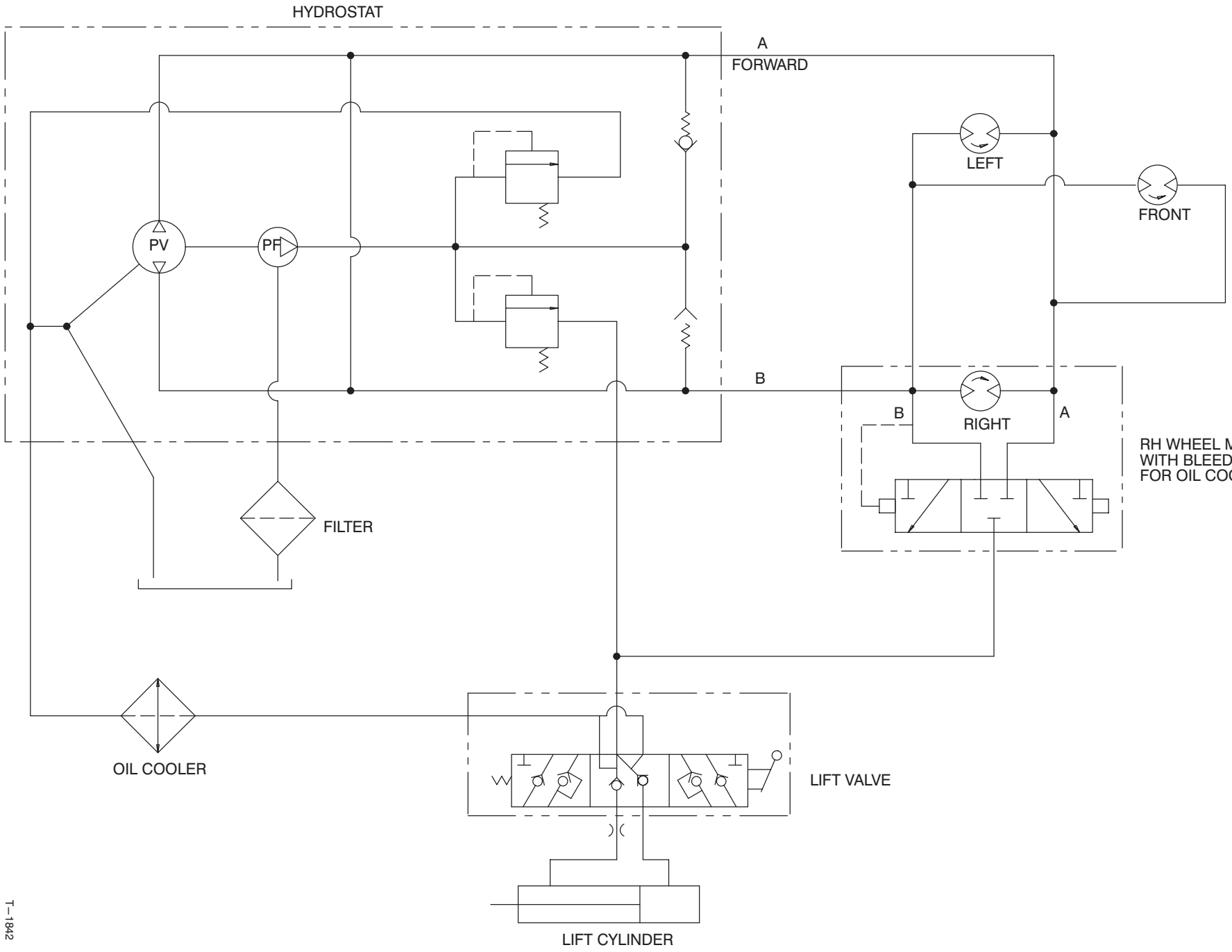
T-0245

HYDRAULIC PUMP ASSEMBLY NO. 92-8790 (Continued)

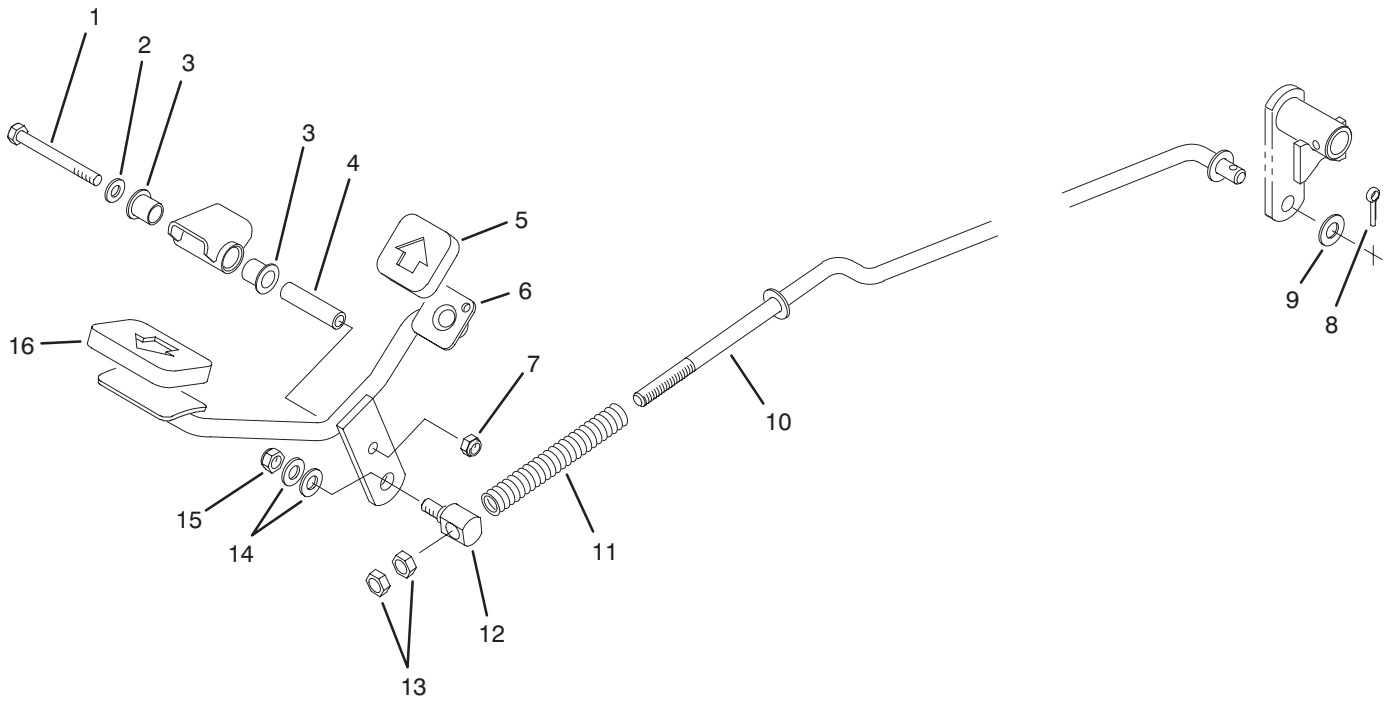
Ref. No.	Part No.	Description	No. Used
53	49-8470	Kit - Shim-Pack	2
*	25-3180	Kit - Check Valve (Incl. Ref. #47-50)	1
*	49-8510	Kit - Charge Relief Valve (Incl. Ref. #14-16 & 32-33)	1

Ref. No.	Part No.	Description	No. Used
*	49-8520	Kit - Implement Relief (Incl. Ref. #14-18)	1
*	25-3220	Kit - Charge Pump (Incl. Ref. #21-27)	1

*Not Illustrated



HYDRAULIC SCHEMATIC

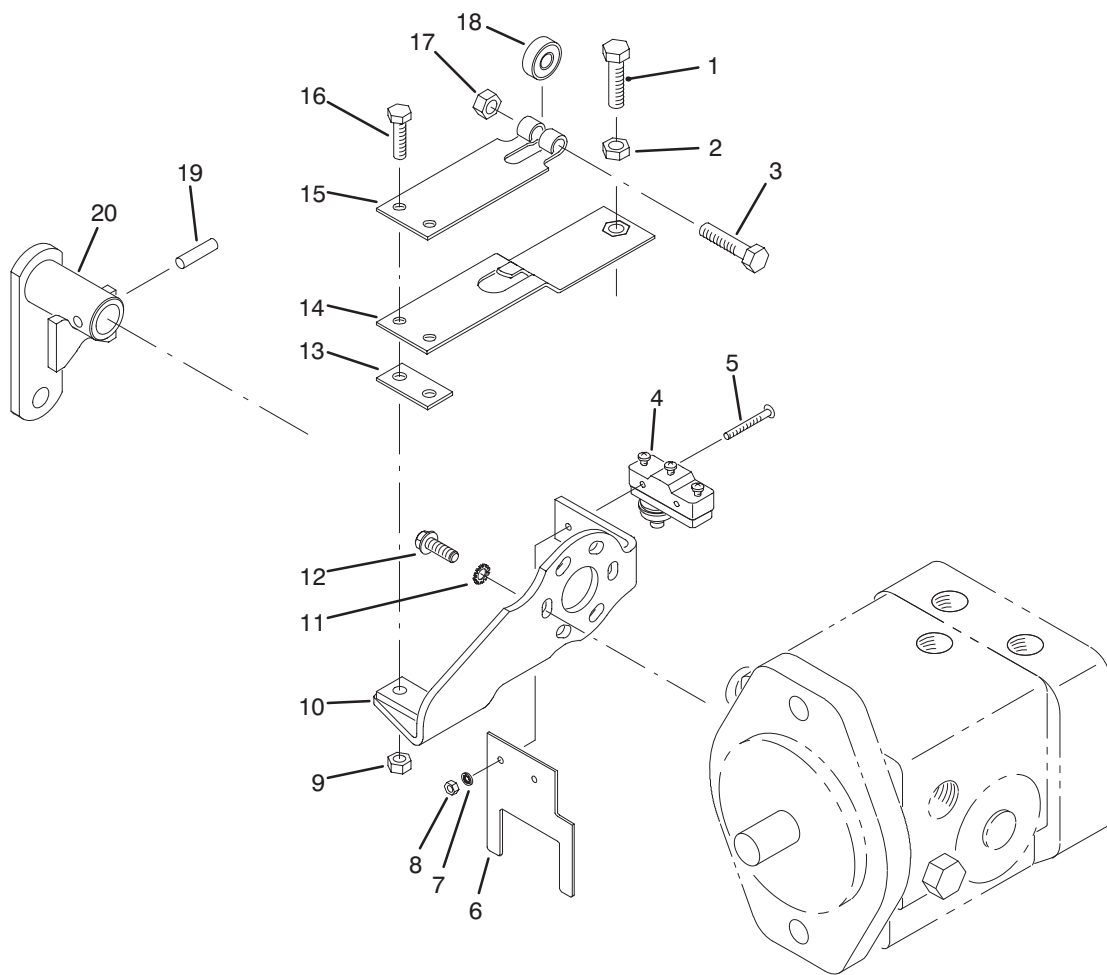


T-1852

TRACTION PEDAL ASSEMBLY

Ref. No.	Part No.	Description	No. Used
1	322-14	Screw - Cap Hex. Hd.	1
2	3256-23	Washer - Flat	1
3	256-219	Bushing - Flange	2
4	85-8960	Spacer	1
5	74-9110	Pad - Reverse Pedal	1
6	92-2343	Pedal - Traction	1
7	3296-29	Nut - Lock	1
8	3272-16	Pin - Cotter	1

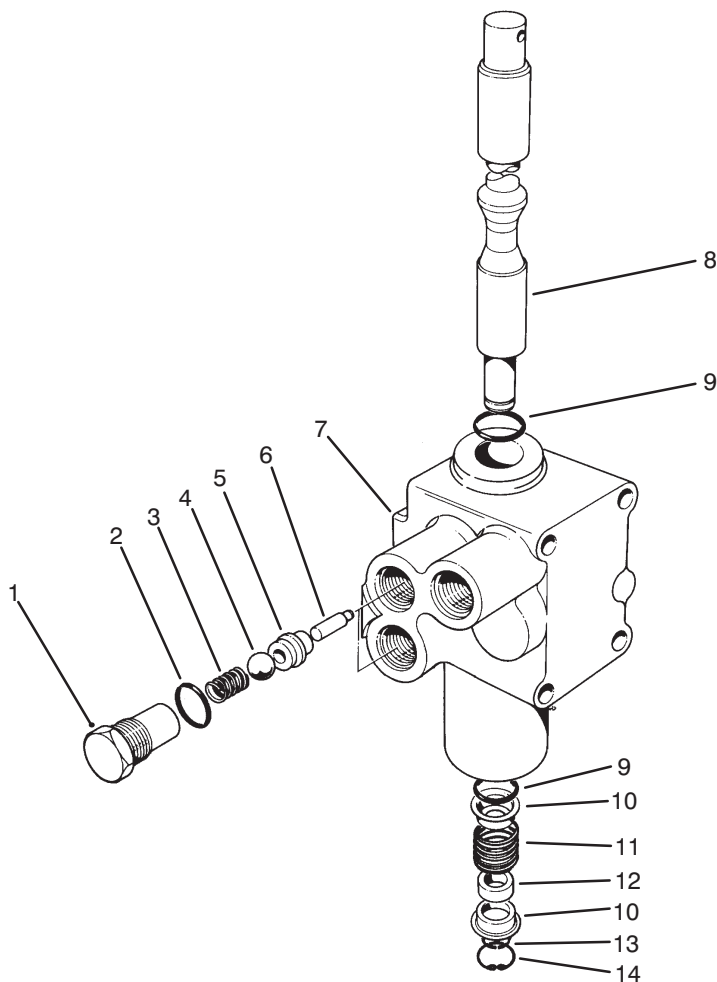
Ref. No.	Part No.	Description	No. Used
9	3256-25	Washer - Flat	1
10	92-7153	Rod - Traction	1
11	38-0860	Spring - Compression	1
12	92-2344	Stud - Adjuster	1
13	3220-4	Nut - Jam	2
14	3256-24	Washer - Flat	2
15	3296-39	Nut - Lock	1
16	74-9100	Pad - Forward Pedal	1



T-1843

NEUTRAL SYSTEM ASSEMBLY

Ref. No.	Part No.	Description	No. Used	Ref. No.	Part No.	Description	No. Used
1	3210-4	Screw - Cap Hex. Hd.	1	11	3255-7	Washer - Lock ETLW	3
2	3219-2	Nut - Hex.	1	12	49-2040	Screw - Self Tapping	3
3	322-17	Screw - Cap Hex. Hd.	1	13	51-3150	Shim - Spring	1
4	29-6162	Switch - Neutral	1	14	29-6170	Leaf Spring Assembly	1
5	3249-11	Screw - Round Hd.	2	15	29-6150	Spring - Leaf	1
6	46-8810	Stop - Leaf Spring	1	16	321-6	Screw - Cap Hex. Hd.	2
7	3254-9	Washer - Lock ITLW	2	17	3296-29	Nut - Lock	1
8	3217-16	Nut - Hex.	2	18	251-259	Bearing - Ball	1
9	3296-42	Nut - Lock	2	19	32121-24	Pin - Roll	1
10	29-6120	PLate - Pump	1	20	26-2810	Lever - Pump	1

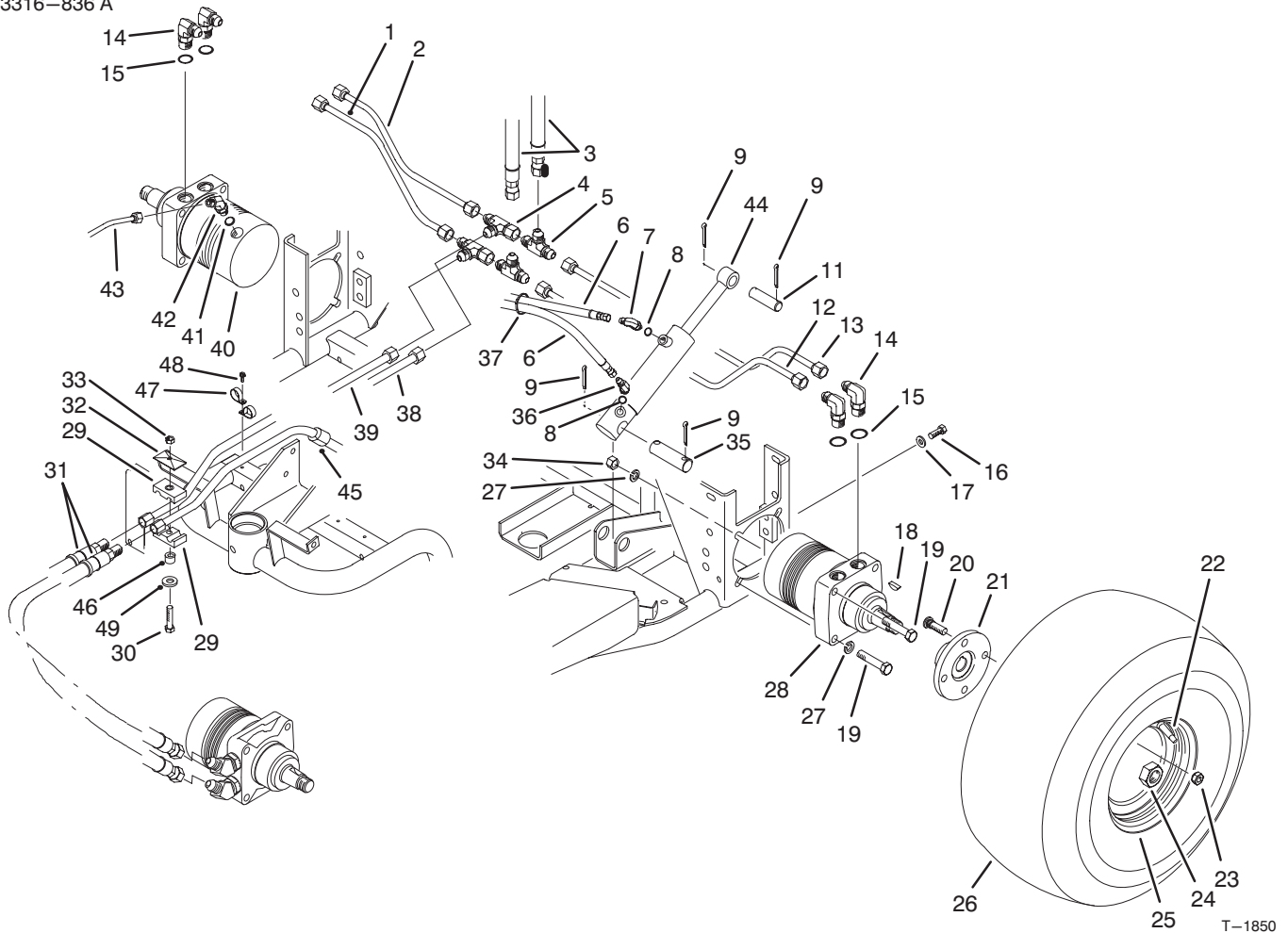


T-0236

HYDRAULIC LIFT VALVE ASSEMBLY NO. 43-1950

Ref. No.	Part No.	Description	No. Used
1	22-8330	Plug	2
2	237-42	O-Ring	2
3	22-8340	Spring	2
4	22-8350	Ball	2
5	22-8370	Seat - Check Valve	2
6	22-8360	Pin - Cam	2
7	43-1730	Body	1

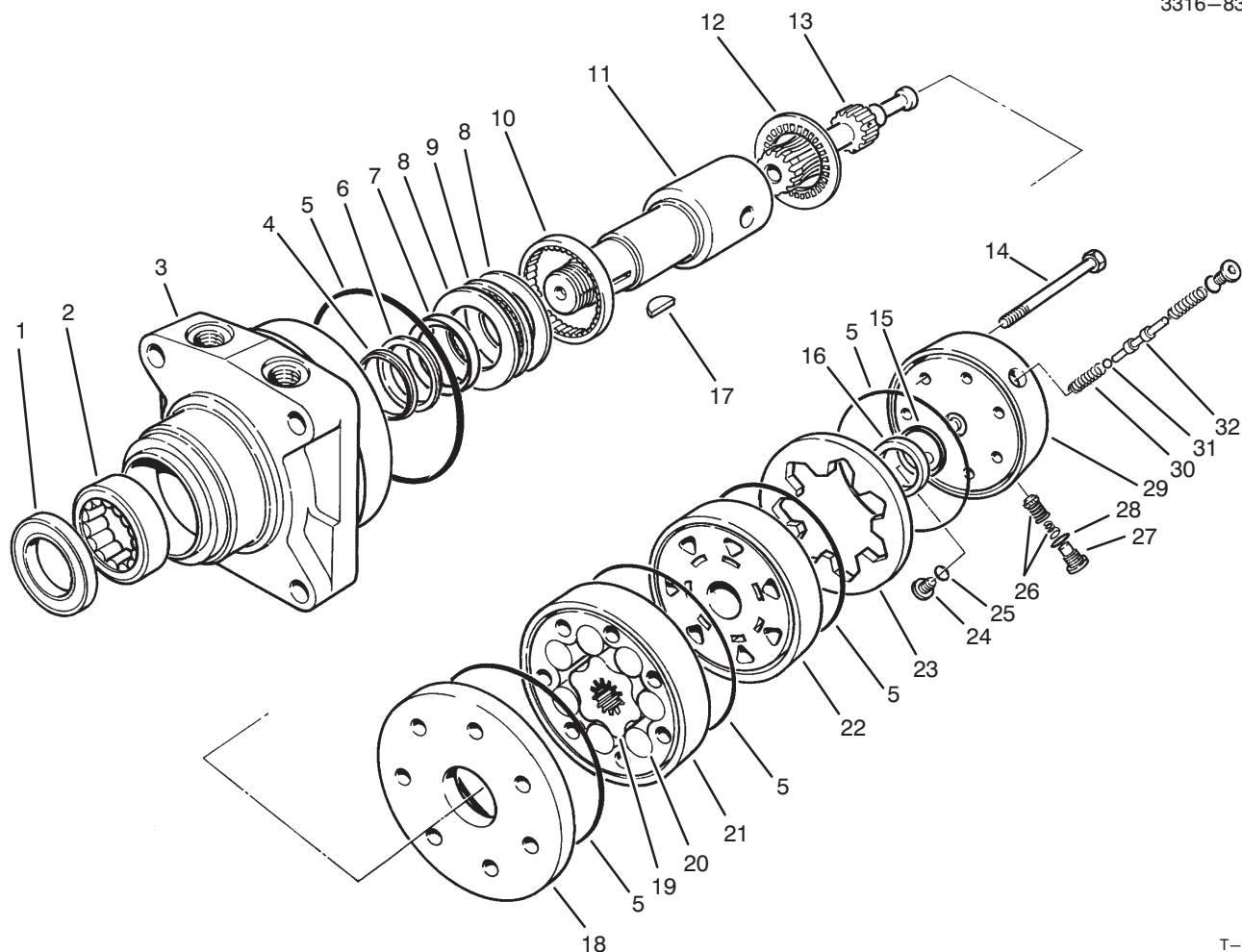
Ref. No.	Part No.	Description	No. Used
8	22-8420	Spool	1
9	22-8500	O-Ring	2
10	22-8380	Retainer - Spring	2
11	22-8410	Spring	1
12	23-3030	Spacer	1
13	22-8480	Ring - Spool Retaining	1
14	22-8490	Ring - Retaining	1



REAR WHEEL DRIVE ASSEMBLY

Ref. No.	Part No.	Description	No. Used
1	18-6700	Tube - Hydraulic	1
2	18-6730	Tube - Hydraulic	1
3	21-5370	Hose - Hydraulic	2
4	353-425	Fitting - Hydraulic Tee	2
5	353-424	Fitting - Hydraulic Tee	2
6	22-4670	Hose - Hydraulic	2
7	354-132	Fitting Hydraulic 90° (Incl. Ref. #8)	1
8	237-78	Seal - O-Ring	2
9	3272-23	Pin - Cotter	4
11	18-7310	Pin - Cylinder	1
12	18-6710	Tube - Hydraulic	1
13	18-6720	Tube - Hydraulic	1
14	353-426	Fitting Hydraulic 90° (Incl. Ref. #15)	4
15	237-79	Seal - O-Ring	4
16	3256-26	Washer - Flat	4
17	325-5	Screw - Cap Hex. Hd.	4
18	3257-42	Key - Woodruff	2
19	325-10	Screw - Cap Hex. Hd.	8
20	10-6830	Stud - Drive	8
21	17-4710	Hub - Wheel	2
22	232-35	Valve - Stem	2
23	242-50	Nut - Lug	8
24	26-3790	Nut - Lock	2
25	46-4810	Rim - Wheel	2
26	85-8290	Tire	2

Ref. No.	Part No.	Description	No. Used
27	3253-7	Washer - Lock	8
28	75-9831	Hydraulic Motor Assembly (Incl. Ref. #18)	1
29	56-7976	Clamp - Tube	2
30	321-18	Screw - Cap Hex. Hd.	1
31	51-0600	Hose - Hydraulic	2
32	69-9760	Plate - Cover	1
33	3296-8	Nut - Lock	1
34	3217-9	Nut - Hex.	8
35	18-7160	Pin - Cylinder	1
36	353-431	Fitting - Hydraulic 45° (Incl. Ref. #8)	1
37	3290-378	Tie - Cable	1
38	92-7183	Tube - Hydraulic	1
39	92-7183	Tube - Hydraulic	1
40	75-9840	Hydraulic Motor Assembly (Incl. Ref. #18)	1
41	237-42	Seal - O-Ring	1
42	353-212	Fitting - Hydraulic 45° (Incl. Ref. #41)	1
43	51-0620	Tube - Hydraulic	1
44	83-7000	Hydraulic Cylinder Assembly	1
45	38-3400	Guard - Rubber	1
46	52-2480	Spacer	1
47	2412-70	Clamp - R	2
48	32144-11	Screw - Self Tapping	1
49	3256-78	Washer - Flat	1



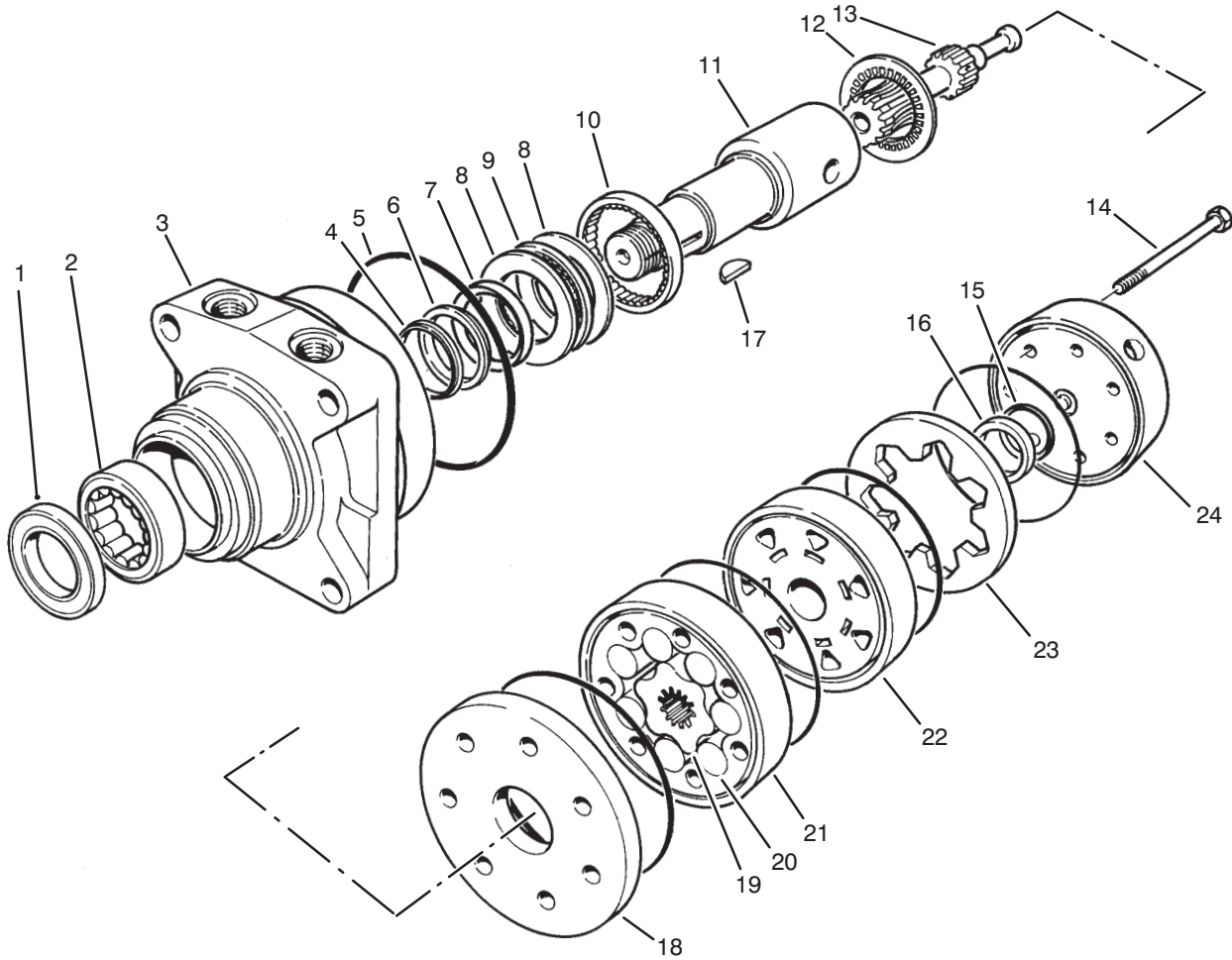
T-0982

HYDRAULIC DRIVE MOTOR RIGHT REAR NO. 75-9840

Ref. No.	Part No.	Description	No. Used
1		Seal - Dirt & Water	1
2		Bearing	1
3		Housing	1
4		Washer - Backup	1
5		Seal - Rings	5
6		Washer - Backup	1
7		Seal - Inner	1
8		Washer - Thrust	2
9		Bearing - Thrust	1
10		Bearing	1
11	76-0860	Shaft - Coupling	1
12	76-0850	Bearing - Thrust	1
13	76-0820	Link - Drive	1
14	76-1040	Screw - Cap Hex. Hd.	7
15		Seal - Commutator	1
16		Commutator	1
17	3257-42	Key - Woodruff	1
18	76-0870	Plate - Wear	1
19		Rotor	1
20		Vane	7
21		Stator	1

Ref. No.	Part No.	Description	No. Used
22	76-0840	Manifold	1
23		Ring - Commutator	1
24		Plug	2
25		O-Ring	2
26		Valve - Relief	1
27		Plug	1
28		O-Ring	1
29	76-0890	Assembly (Incl. Ref. #24-25 & 30-32)	1
30		Spring	2
31		Ball	1
32		Valve - Shuttle	1
*	76-0830	Rotor Set (Incl. Ref. #19-21)	1
*	76-0880	Assembly - Commutator (Incl. Ref. #15, 16 & 23)	1
*	76-0800	Kit - Seal (Incl. Ref. #1, 4-7 & 15)	1
*	76-0810	Assembly - Housing (Incl. Ref. #2, 3 & 8-10)	1

*Not Illustrated



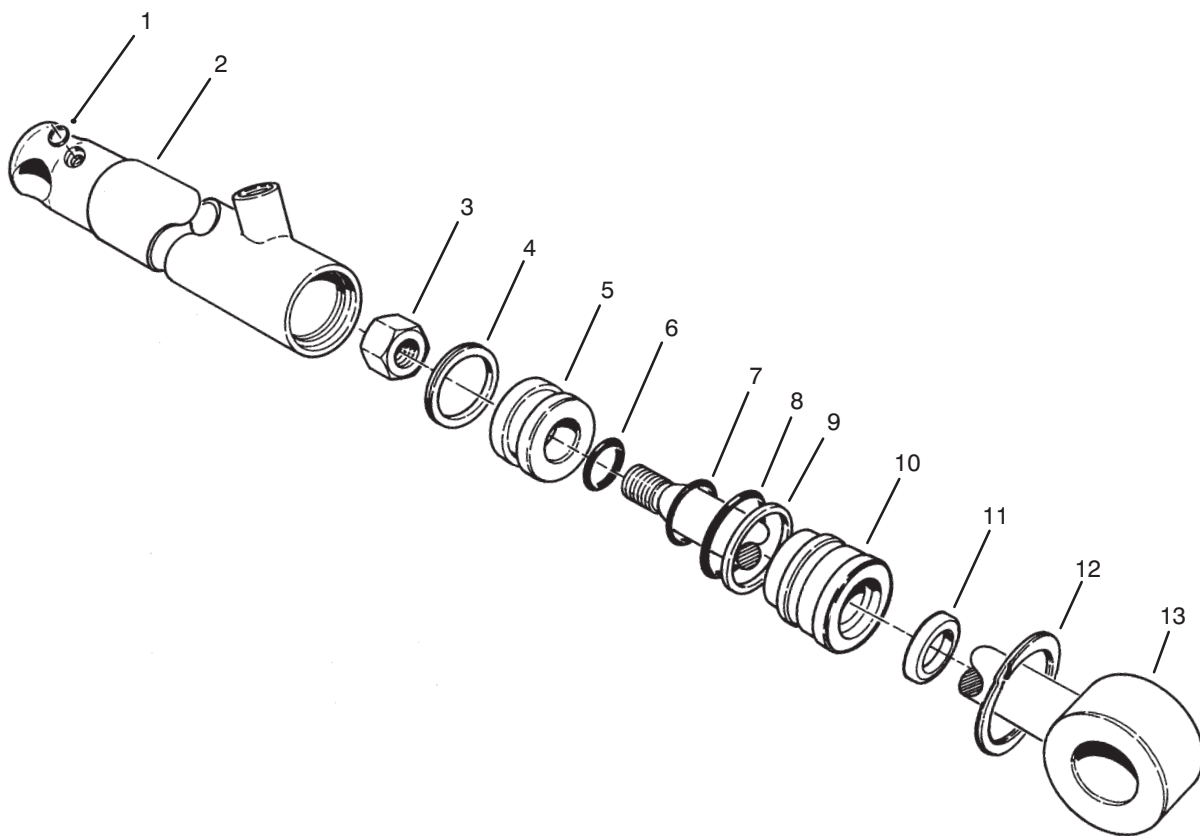
T-0983

HYDRAULIC DRIVE MOTOR LEFT REAR NO. 75-9831

Ref. No.	Part No.	Description	No. Used
1		Seal - Dirt & Water	1
2		Bearing	1
3		Housing	1
4		Washer - Backup	1
5		Seal - Rings	5
6		Washer - Backup	1
7		Seal - Inner	1
8		Washer - Thrust	2
9		Bearing - Thrust	1
10		Bearing	1
11	76-0860	Shaft - Coupling	1
12	76-0850	Bearing - Thrust	1
13	76-0820	Link - Drive	7
14	76-1020	Screw - Cap Hex. Hd.	1
15		Seal - Commutator	1
16		Commutator	1

Ref. No.	Part No.	Description	No. Used
17	3257-42	Key - Woodruff	1
18	76-0870	Plate - Wear	1
19		Rotor	1
20		Vane	7
21		Stator	1
22	76-0840	Manifold	1
23		Ring - Commutator	1
24	76-0940	Assembly - Cover, End	1
*	76-0830	Rotor Set (Incl. Ref. #19-21)	1
*	76-0880	Assembly - Commutator (Incl. Ref. #15, 16 & 23)	1
*	76-0800	Kit - Seal (Incl. Ref. #1, 4-7 & 15)	1
*	76-0810	Assembly - Housing (Incl. Ref. #2, 3 & 8-10)	1

*Not Illustrated



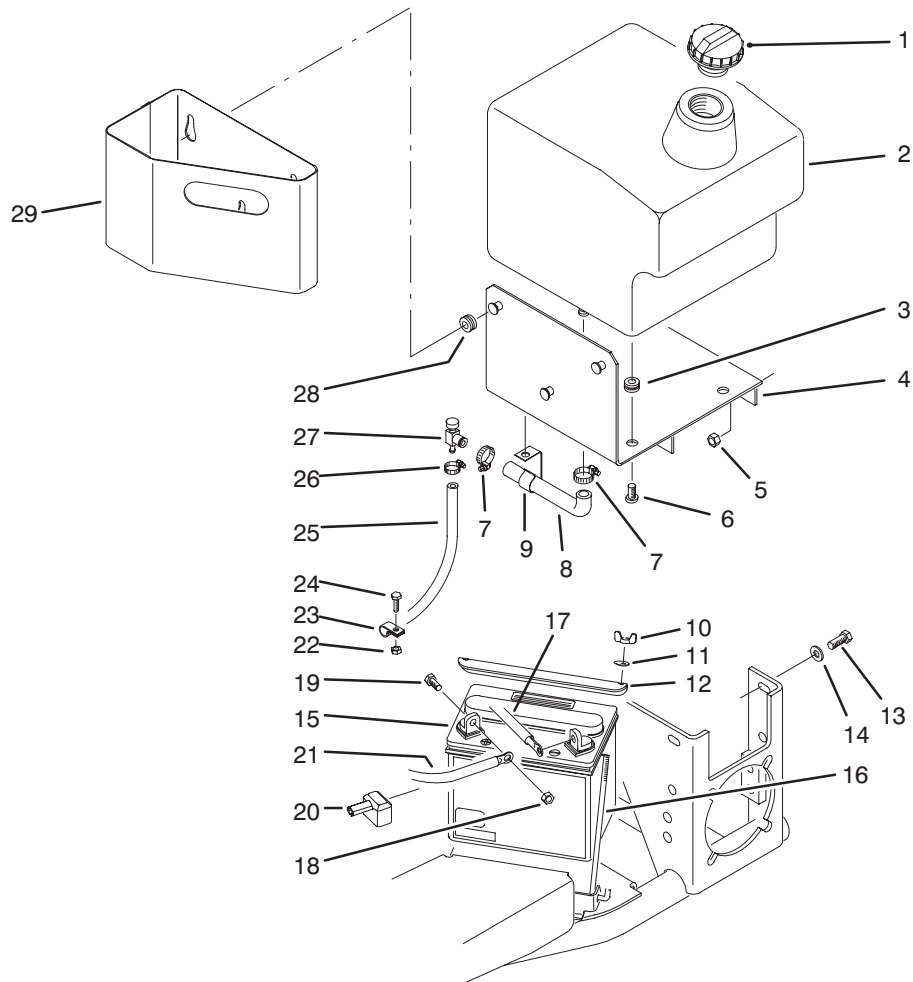
T-0217

HYDRAULIC CYLINDER ASSEMBLY NO. 83-7000

Ref. No.	Part No.	Description	No. Used
1	237-78	O-Ring	2
2	43-5260	Barrel - w/Clevis & Ports	1
3	32152-10	Nut	1
4		Uniring	1
5	70-2780	Piston	1
6		O-Ring	1
7		Poly-Pack	1
8		O-Ring	1

Ref. No.	Part No.	Description	No. Used
9		Back-Up	1
10	70-2770	Head	1
11		Seal - Dust	1
12	43-5220	Ring - Retaining	1
13	43-5230	Shaft with Clevis	1
*	83-7250	Kit - Seal Repair (Incl. Ref. #4, 6-9 & 11)	1

*Not Illustrated

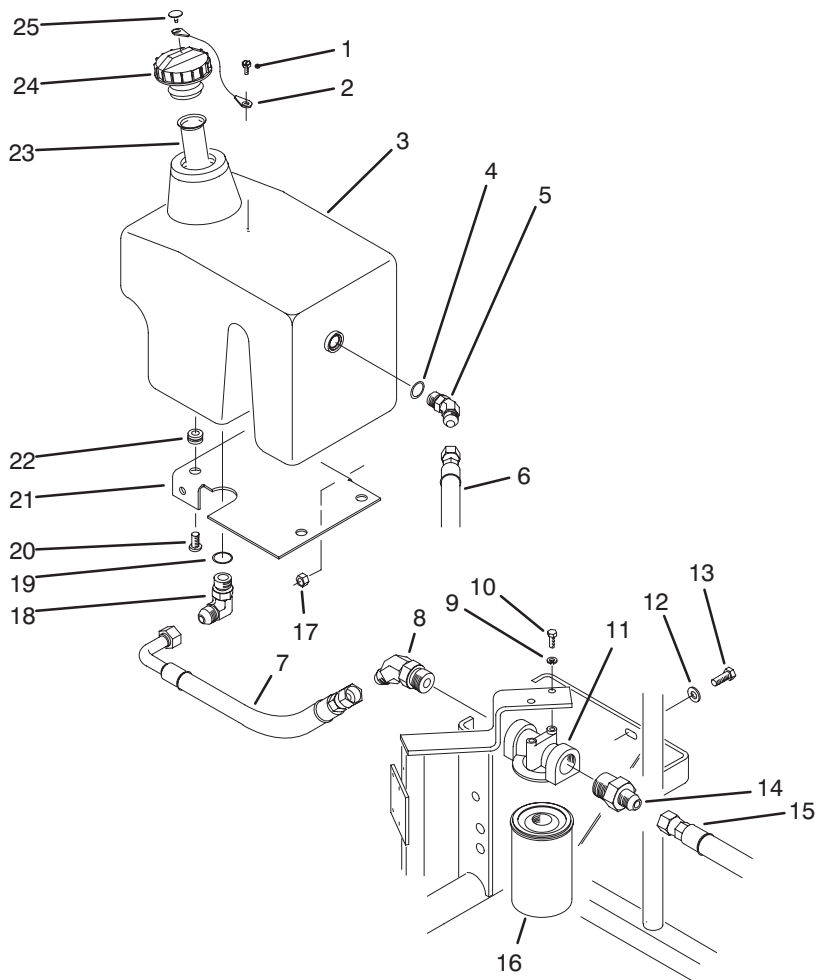


T-1755

FUEL TANK ASSEMBLY

Ref. No.	Part No.	Description	No. Used
1	93-3101	Cap - Fuel	1
2	92-7186	Tank - Fuel	1
3	237-136	Grommet	4
4	84-8110	Base - Fuel Tank	1
5	3296-39	Nut - Lock	3
6	3250-36	Screw - Phillips Hd.	4
7	2412-36	Clamp - Hose	2
8	92-7152	Hose - Fuel	1
9	92-7160	Clip - Fuel Hose	1
10	32103-12	Nut - Wing	2
11	3256-22	Washer - Flat	2
12	92-5018	Clamp - Battery	1
13	323-6	Screw - Cap Hex. Hd.	3
14	3256-24	Washer - Flat	3
15	92-1678	Battery	1

Ref. No.	Part No.	Description	No. Used
16	56-7720	Bolt - Battery	2
17	86-7450	Wire - Battery-Ground	1
18	3296-29	Nut - Lock	2
19	322-3	Screw - Cap Hex. Hd.	2
20	28-8080	Boot - Terminal	1
21	86-7570	Wire - Battery-Solenoid	1
22	3296-42	Nut - Lock	1
23	2412-73	Clamp - R	1
24	3274-69	Screw - Hex. Button Hd.	1
25	84-8050	Hose - Fuel	1
26	2412-108	Clamp - Hose	1
27	56-2520	Fitting - Fuel Shut-Off	1
28	240-9	Grommet	3
29	86-7640	Box - Litter	1

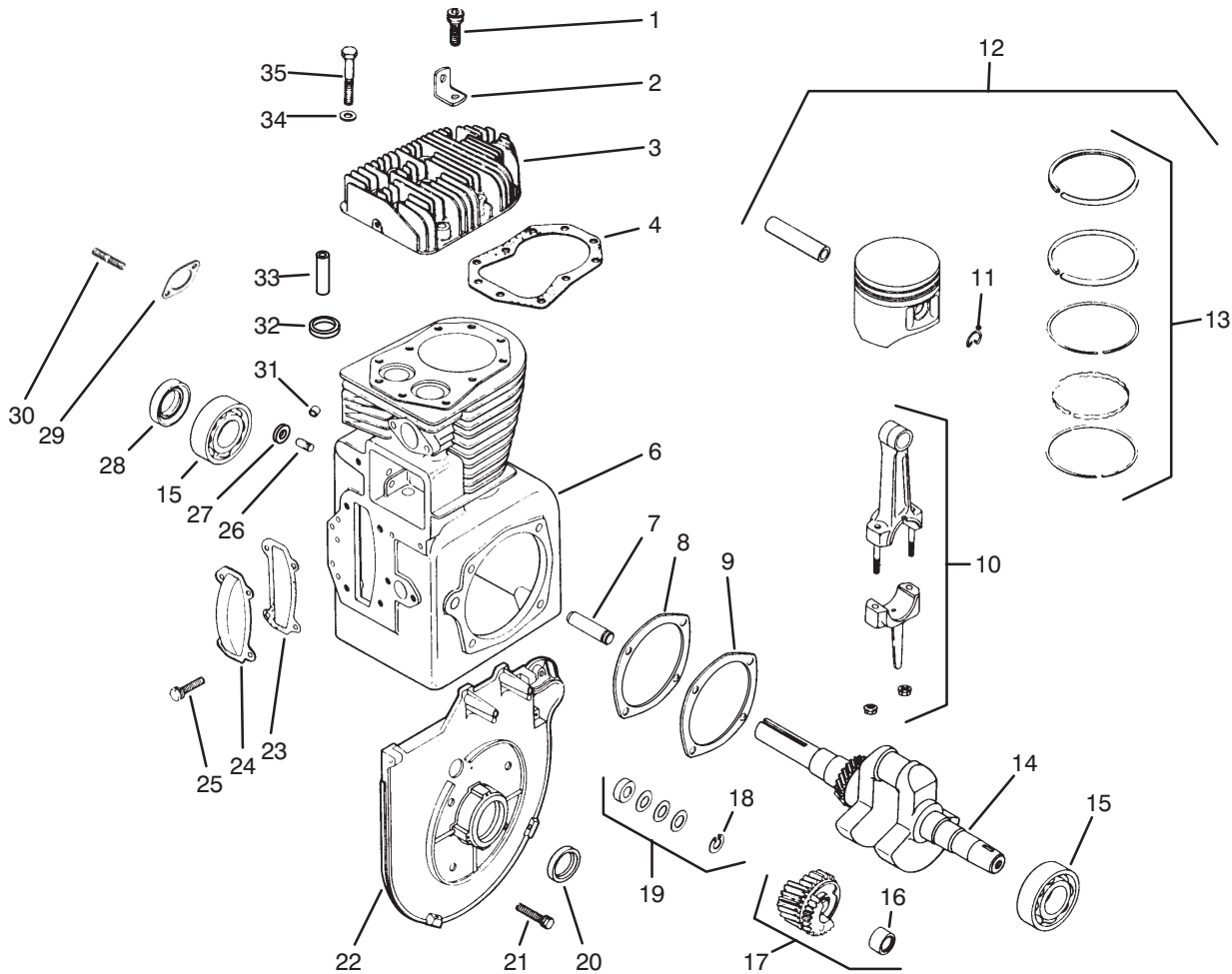


T-1851

HYDRAULIC OIL RESERVOIR & FILTER ASSEMBLY

Ref. No.	Part No.	Description	No. Used
1	57-5420	Screw - Hex. Hd.	1
2	75-0540	Tether - Oil Cap	1
3	92-7187	Reservoir - Hydraulic Oil	1
4	237-79	Seal - O-Ring	1
5	353-379	Fitting - Hydraulic 45° (Incl. Ref. #4)	1
6	21-5360	Hose - Hydraulic	1
7	85-6570	Hose - Hydraulic	1
8	353-535	Fitting - Hydraulic 45°	1
9	3253-3	Washer - Lock	2
10	321-4	Screw - Cap Hex. Hd.	2
11	43-8590	Head - Hydraulic Filter	1
12	3256-24	Washer - Flat	3
13	323-6	Screw - Cap Hex. Hd.	3

Ref. No.	Part No.	Description	No. Used
14	353-506	Fitting - Hydraulic Straight	1
15	53-9470	Hose - Hydraulic	1
16	23-9740	Element - Hydraulic Filter	1
17	3296-39	Nut - Lock	3
18	353-370	Fitting - Hydraulic 90° (Incl. Ref. #19)	1
19	237-80	Seal - O-Ring	1
20	3250-36	Screw - Phillips Hd.	4
21	84-8160	Base - Hydraulic Tank	1
22	237-136	Grommet	4
23	92-1705	Screen - Filter	1
24	93-4365	Oil Cap Assembly (Incl. Ref. #2 & 25)	1
25	2410-73	Retainer - Tether	1



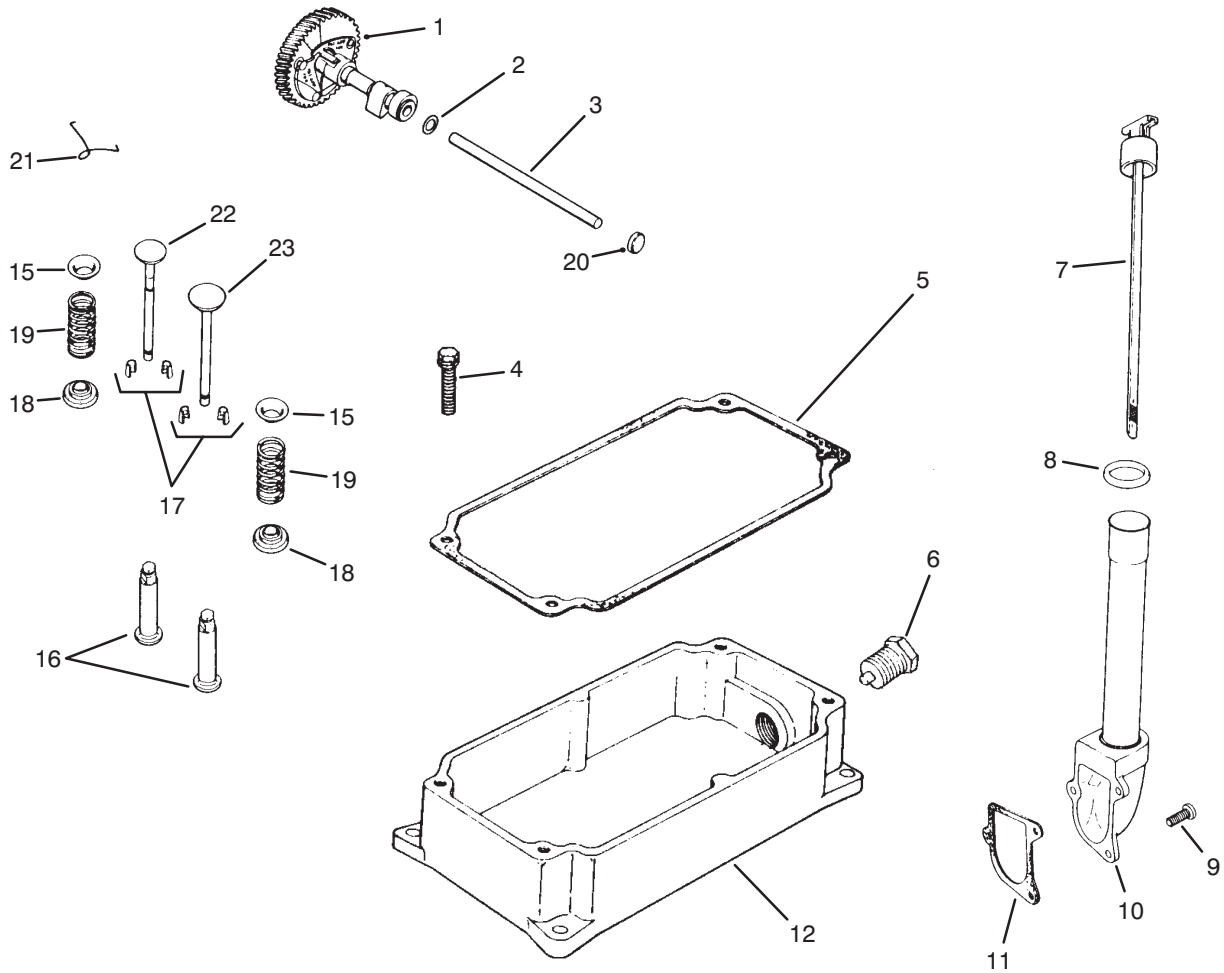
T-1844

ENGINE KOHLER MODEL M14S SPEC. NO. 601561

Ref. No.	Part No.	Description	No. Used
1	47 086 17	Screw – Hex. Soc. Hd.	1
2	47 445 02	Strap – Lifting	1
3	47 015 06	Head – Cylinder	1
4	47 041 15	Gasket – Head	1
6	47 782 92	Short Block Assembly	1
7	236559	Shaft – Gear Stub	2
8	47 422 05	Gasket – Shim	A/R
9	47 041 09	Gasket – Plate, Bearing	1
10	45 067 24	Rod – Connecting (Std.)	1
	45 067 25	Rod – Connecting (.010)	1
11	47 018 01	Retainer – Piston Pin	2
12	47 874 21	Piston w/Ring Set (Std.)	1
	47 874 22	Piston w/Ring Set (.003)	1
	47 874 23	Piston w/Ring Set (.010)	1
	47 874 24	Piston w/Ring Set (.020)	1
	47 874 25	Piston w/Ring Set (.030)	1
13	47 108 05	Ring Set – (Std. & .003)	1
	47 108 06	Ring Set – (.010)	1
	47 108 07	Ring Set – (.020)	1
	47 108 08	Ring Set – (.030)	1
14	45 142 36	Crankshaft Kit	1
15	235376	Bearing – Ball	2
16	47 030 01	Bearing – Needle	2

Ref. No.	Part No.	Description	No. Used
17	45 043 03	Assembly – Gear (Incl. Ref. #16)	2
18	X-269-34	Retainer	2
19	47 755 01	Kit – Spacer (Incl. Ref. #18)	1
20	47 032 06	Seal – Front, Oil	1
21	X-159-2	Screw – Hex. Cap	4
22	47 146 11	Plate – Bearing	1
23	235025	Gasket – Cover	1
24	235026	Cover – Camshaft	1
25	X-123-6	Screw – Hex. Cap	4
26	235125-S	Shaft – Gear, Governor	1
27	X-230-11	Plug – Expansion	1
28	47 032 07	Seal – Rear, Oil	1
29	235122	Gasket – Flange, Exhaust	2
30	41 072 19	Stud	2
31	234866	Bearing – Shaft, Governor	1
32	230265	Insert – Valve, Exhaust	1
33	235007-S	Guide – Valve	2
34	270889	Washer – Plain	9
35	270158	Screw – Hex. Cap	8
*	47 755 27	Gasket Set w/Seals	1
*	47 004 02	Gasket Set w/o Seals	1

*Not Illustrated

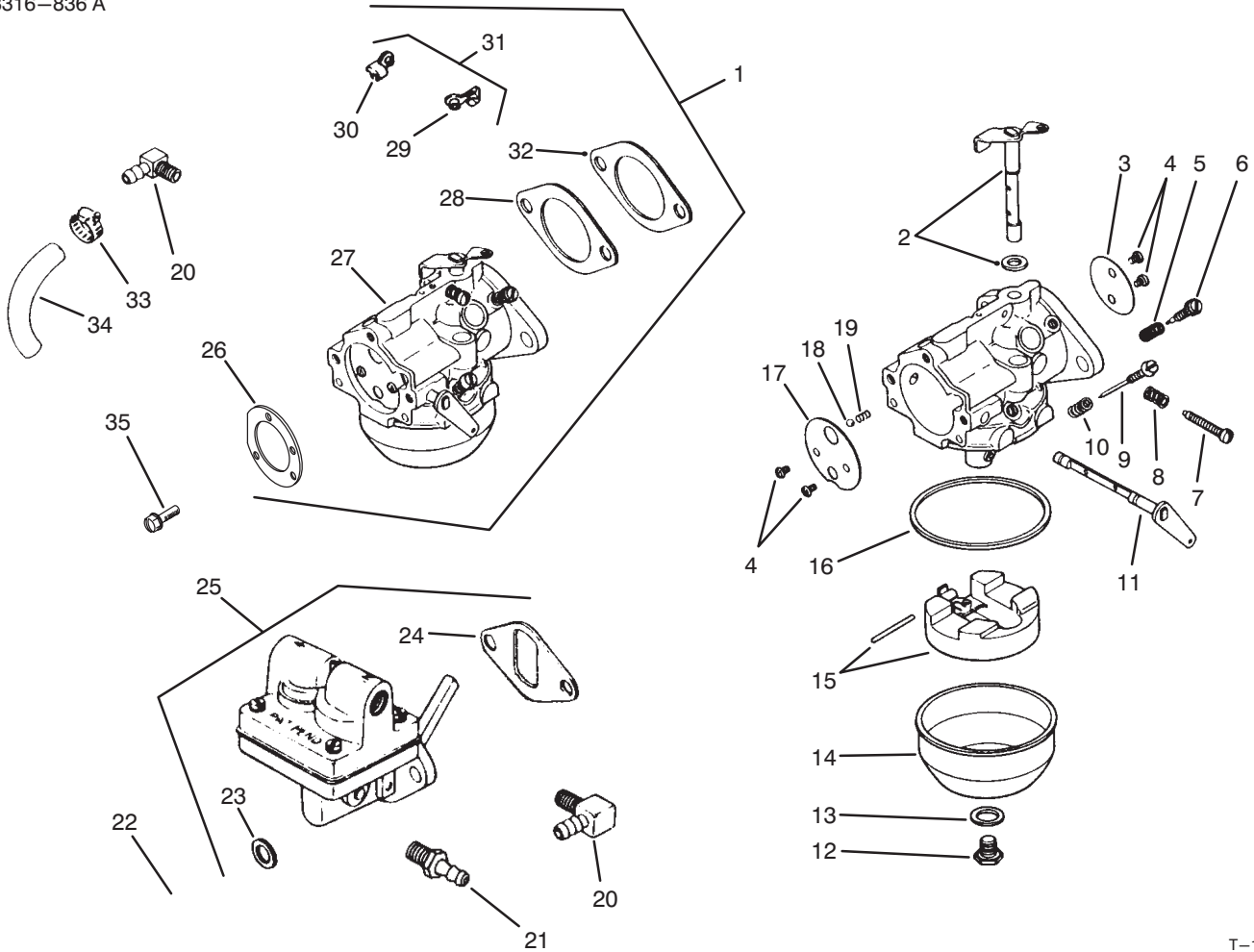


T-1845

ENGINE KOHLER MODEL M14S SPEC. NO. 601561 (Cont.)

Ref. No.	Part No.	Description	No. Used	Ref. No.	Part No.	Description	No. Used
1	47 010 11	Camshaft Assembly (Incl. Ref. #21)	1	11	237064	Gasket - Oil Fill	1
2	275066	Spacer .005	A/R	12	235147	Pan - Oil	1
3	47 380 09	Pin - Camshaft	1	15	235011	Retainer - Spring	2
4	X-159-3	Screw - Hex. Cap	4	16	D-235327	Tappet	2
5	235057	Gasket - Oil Pan	1	17	41 755 10	Kit - Retainer	2
6	X-305-4	Plug - Hex. Hd.	1	18	52 413 01	Rotator - Valve	2
7	47 038 26	Dipstick	1	19	235168	Spring - Exhaust Valve	2
8	41 153 01	O-Ring	1	20	X-702-3	Plug - Cup	1
9	X-131-2	Screw - Flat Hd.	3	21	47 089 01	Spring - Actuating	1
10	47 029 06	Adapter - Oil Fill	1	22	237672	Valve - Exhaust	1
				23	235582	Valve - Intake	1

*Not Illustrated



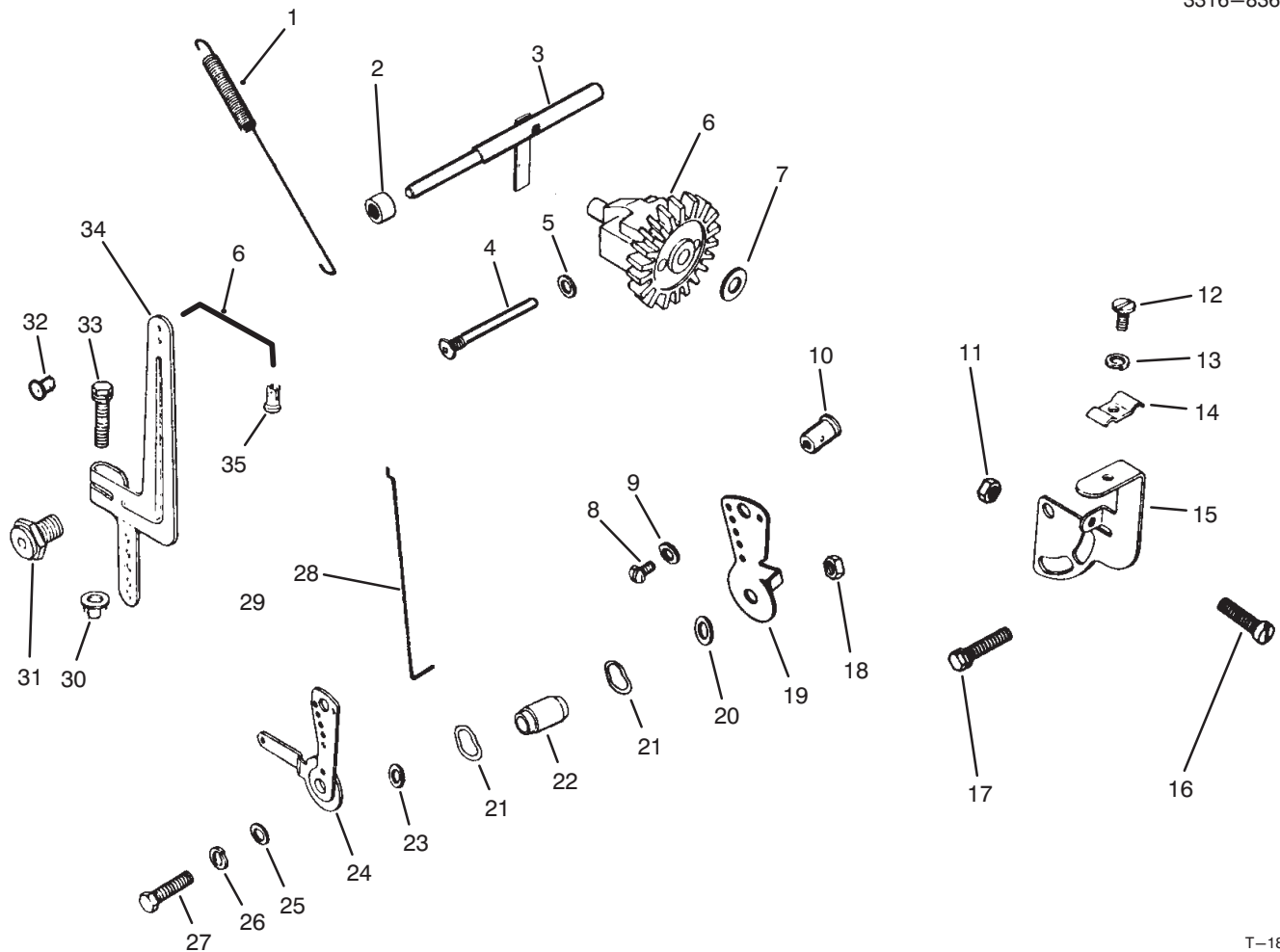
T-1846

ENGINE KOHLER MODEL M14S SPEC. NO. 601561 (Cont.)

Ref. No.	Part No.	Description	No. Used
1	47 853 29	Kit - Adj. Jet w/Linkage (Incl. Ref. #26-31)	1
2	47 144 36	Shaft - W/Seal	1
3	47 146 10	Plate - Choke	1
4	25 086 27	Screw - Throttle & Choke	4
5	25 089 02	Spring - Idle Fuel	1
6	25 368 01	Needle - Idle Fuel Adj.	1
7	25 086 26	Screw - Idle Speed Adj.	1
8	25 089 04	Spring - Idle Speed	1
9	25 368 03	Needle - Main Fuel	1
10	25 089 02	Spring - Main Fuel	1
11	47 090 38	Lever - Choke	1
12	25 100 05	Screw - Bowl Retainer	1
13	25 041 03	Gasket - Bowl Ret. Screw	1
14	25 104 01	Bowl - Fuel	1
15	25 757 09	Kit - Float	1
16	25 041 04	Gasket - Bowl	1
17	25 146 09	Plate - Throttle	1
18	25 194 01	Ball - Choke Friction	1
19	25 089 03	Spring - Choke Friction	1

Ref. No.	Part No.	Description	No. Used
20	25 155 02	Connector - 90°	2
21	X-380-1	Connector - Straight	1
22	X-174-2	Screw - F.H.M.	2
23	X-25-63	Washer - Plain	1
24	25 041 09	Gasket - Pump, Fuel	1
25	47 559 04	Fuel Pump Assembly (Incl. Ref. #23-24)	1
26	45 041 07	Gasket - Air Cleaner	1
27	47 053 96	Carburetor (Incl. Ref. #3-19)	1
28	47 049 01	Gasket - Carburetor	1
29	47 158 07	Bushing - Linkage Retain.	1
30	25 158 11	Bushing - Linkage Retain.	1
31	47 079 10	Linkage - Carburetor	1
32	271030	Gasket - Carburetor	1
33	X-426-9	Clamp - Hose	2
34	25 353 08	Line - Fuel	1
35	X-770-1	Screw - Slotted Hd.	2
*	25 757 11	Carburetor Repair Kit	1
*	25 757 23	Kit - Bowl Vent Baffle	1

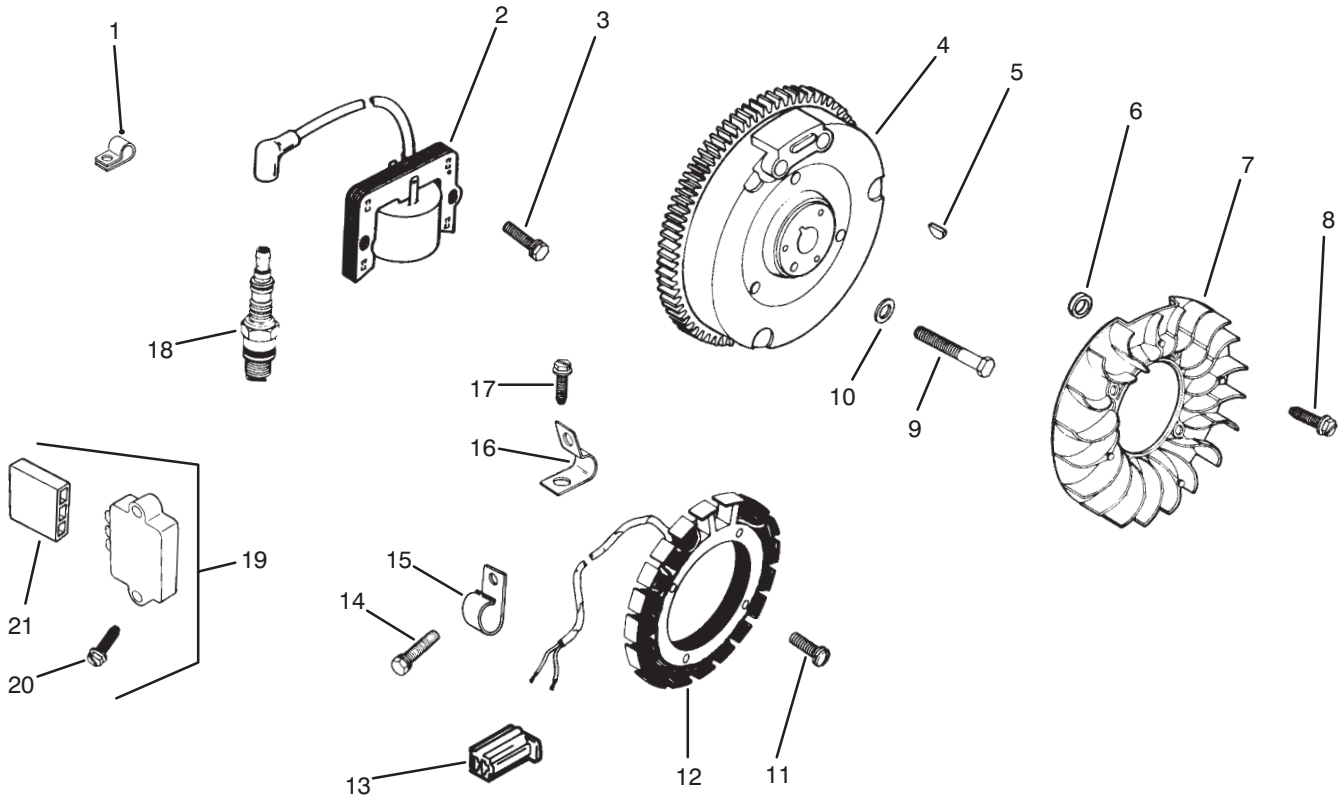
*Not Illustrated



T-1834

ENGINE KOHLER MODEL M14S SPEC. NO. 601561 (Cont.)

Ref. No.	Part No.	Description	No. Used	Ref. No.	Part No.	Description	No. Used
1	47 091 01	Spring – Governor	1	19	47 090 10	Lever – Control, Throttle	1
2	X-400-80	Spacer	1	20	X-25-72	Washer – Plain	1
3	A-235256-S	Kit – Governor Shaft	1	21	275690	Washer – Tension	2
4	231355	Pin – Governor Stop	1	22	47 112 02	Spacer	1
5	25 468 01	Washer – Plain	1	23	X-25-82	Washer – Plain	1
6	A-235743-S	Kit – Governor Gear	1	24	47 090 06	Lever – Control, Choke	1
7	237022	Washer – Thrust	1	25	X-25-63	Washer – Plain	1
8	X-51-8	Screw – Slotted Pan Hd.	1	26	X-20-1	Washer – Lock	1
9	X-25-102	Washer – Plain	1	27	X-5-26	Screw – Hex. Cap	1
10	48 755 10	Kit – Clamp	1	28	47 079 01	Linkage – Choke	1
11	X-72-4	Nut – Hex.	1	29	47 079 10	Linkage – Carburetor	1
12	X-67-51	Screw – Hex. Washer Hd.	1	30	X-799-1	Palnut	1
13	25 468 04	Washer – Plain	1	31	235476	Bushing – Governor	1
14	47 237 02	Clamp	1	32	47 158 07	Bushing – Retaining	1
15	47 126 09	Bracket	1	33	X-766-1	Screw – Hex. Hd.	1
16	232556	Screw – Lever, Throttle	1	34	47 090 20	Lever – Governor	1
17	X-132-6	Screw – Hex. Hd.	1	35	25 158 11	Bushing – Retaining	1
18	X-76-2	Nut – Hex.	1				



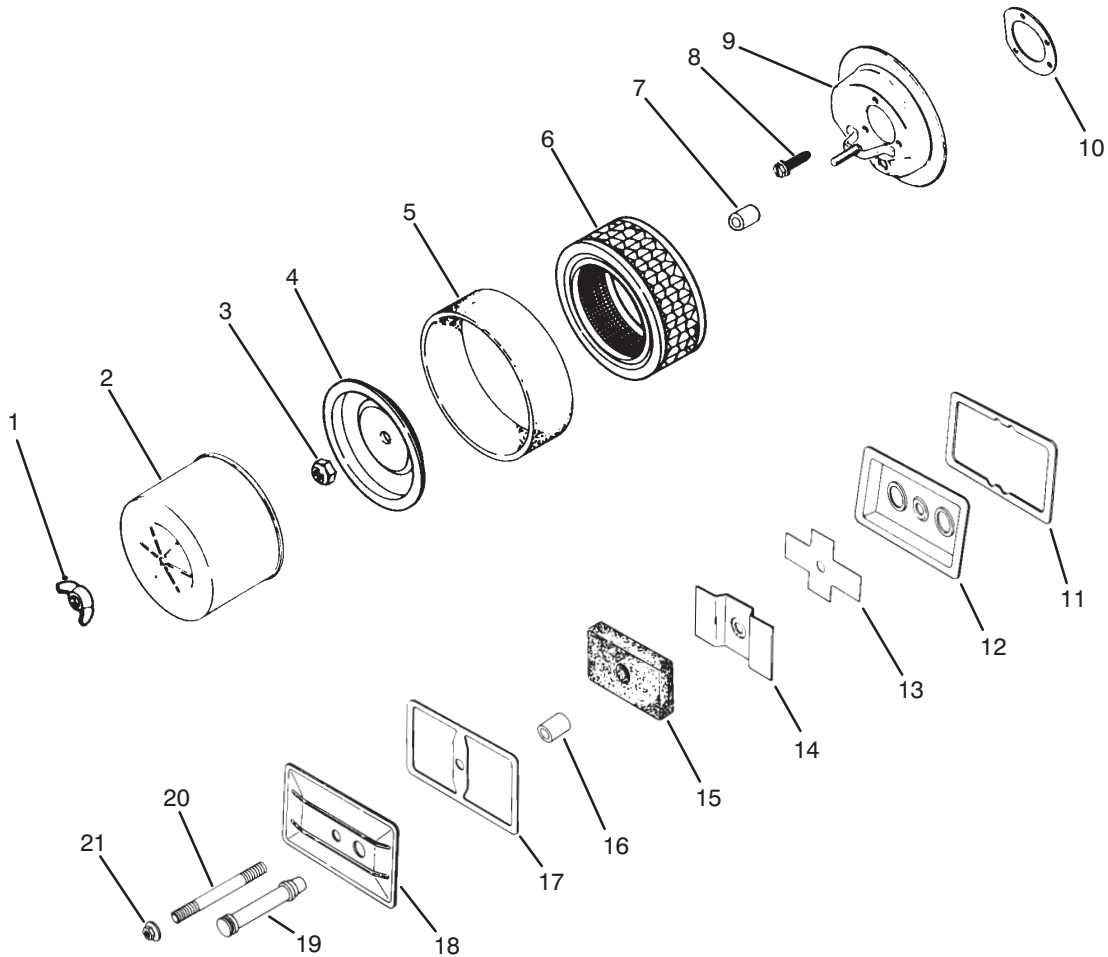
T-1835

ENGINE KOHLER MODEL M14S SPEC. NO. 601561 (Cont.)

Ref. No.	Part No.	Description	No. Used
1	210281	Clip – Lead, Hi-Tension	1
2	47 584 02	Module – Ignition	1
3	X-67-51	Screw – Hex.	2
4	47 025 53	Flywheel	1
5	X-46-3	Key – Woodruff	1
6	25 112 04	Spacer	4
7	25 157 01	Fan	1
8	25 086 21	Screw – Hex. Washer Hd.	4
9	25 086 24	Screw – Hex. Mach.	1
10	52 468 15	Washer – Plain	1
11	X-67-51	Screw – Hex. Washer Hd.	4
12	237878	Kit – Stator (Incl. Ref. #17)	1

Ref. No.	Part No.	Description	No. Used
13	41 155 03	Connector – Male	1
14	X-132-6	Screw – Hex. Hd.	1
15	235173	Clip	1
16	X-728-1	Clip – Lead	1
17	X-67-59	Screw – Hex. Washer Hd.	1
18	23 132 02	Plug – Spark	1
19	25 755 03	Kit – Rectifier (Incl. Ref. #20)	1
20	X-132-5	Screw – Hex. Hd.s	2
21	236602	Connector – Female	1
*	47 518 43	Lead – White w/Diode	1
*	47 518 46	Lead – Violet, Rectifier	1

*Not Illustrated

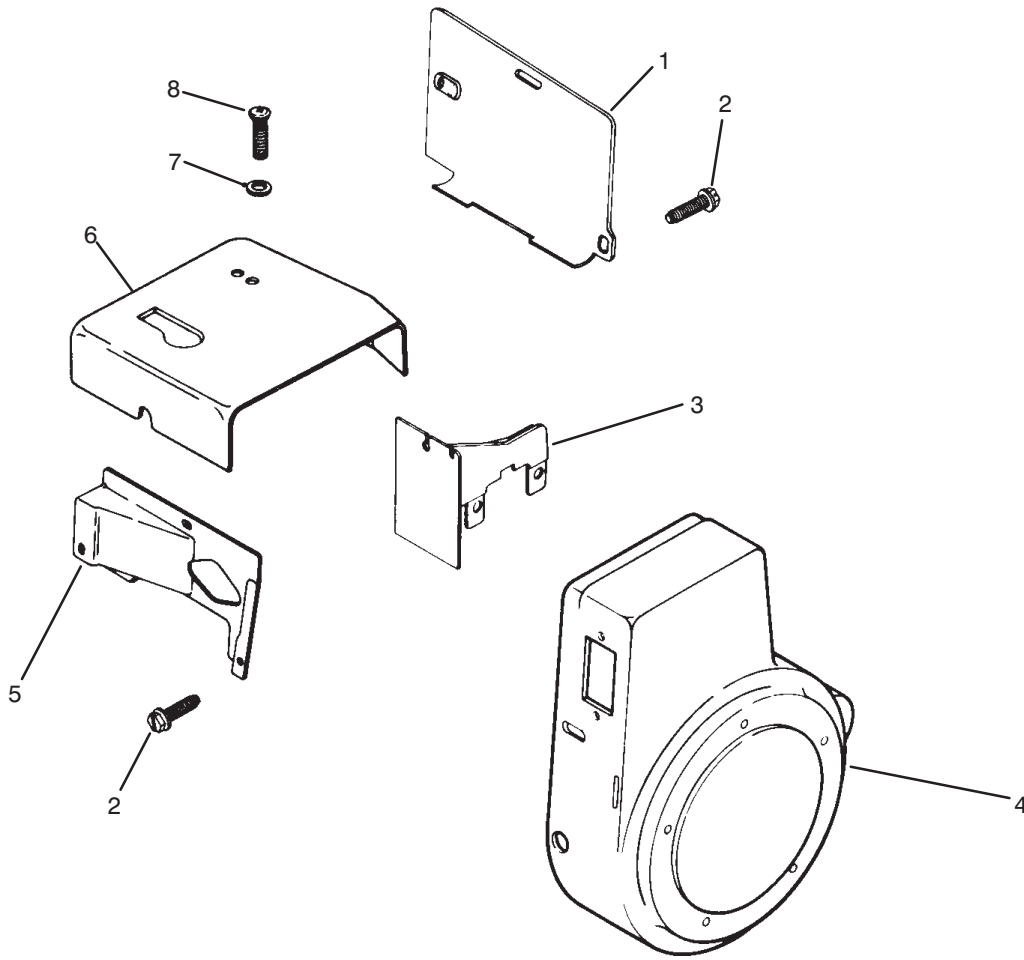


T-1836

ENGINE KOHLER MODEL M14S SPEC. NO. 601561 (Cont.)

Ref. No.	Part No.	Description	No. Used	Ref. No.	Part No.	Description	No. Used
1	X-276-7	Nut - Wing	1	12	235631	Plate - Breather	1
2	45 082 01	Cover - Air Cleaner	1	13	235047	Reed - Breather	1
3	41 100 04	Nut - Jam	1	14	270146	Baffle - Breather	1
4	52 082 04	Cover - Element	1	15	47 050 01	Filter - Breather	1
5	45 083 01	Element - Precleaner	1	16	231032	Seal - Breather	1
6	45 083 02	Element	1	17	275144	Gasket - Valve Cover	1
7	231032	Seal	1	18	47 096 01	Cover - Breather Plate	1
8	X-67-65	Screw - Hex. Washer Hd.	3	19	47 326 03	Hose - Breather	1
9	47 094 20	Base - Air Cleaner	1	20	275220	Stud	1
10	45 041 07	Gasket - Air Cleaner	1	21	X-799-1	Palnut	1
11	235048	Gasket - Breather Plate	1	*	25 113 07	Decal - Air Cleaner	1

*Not Illustrated



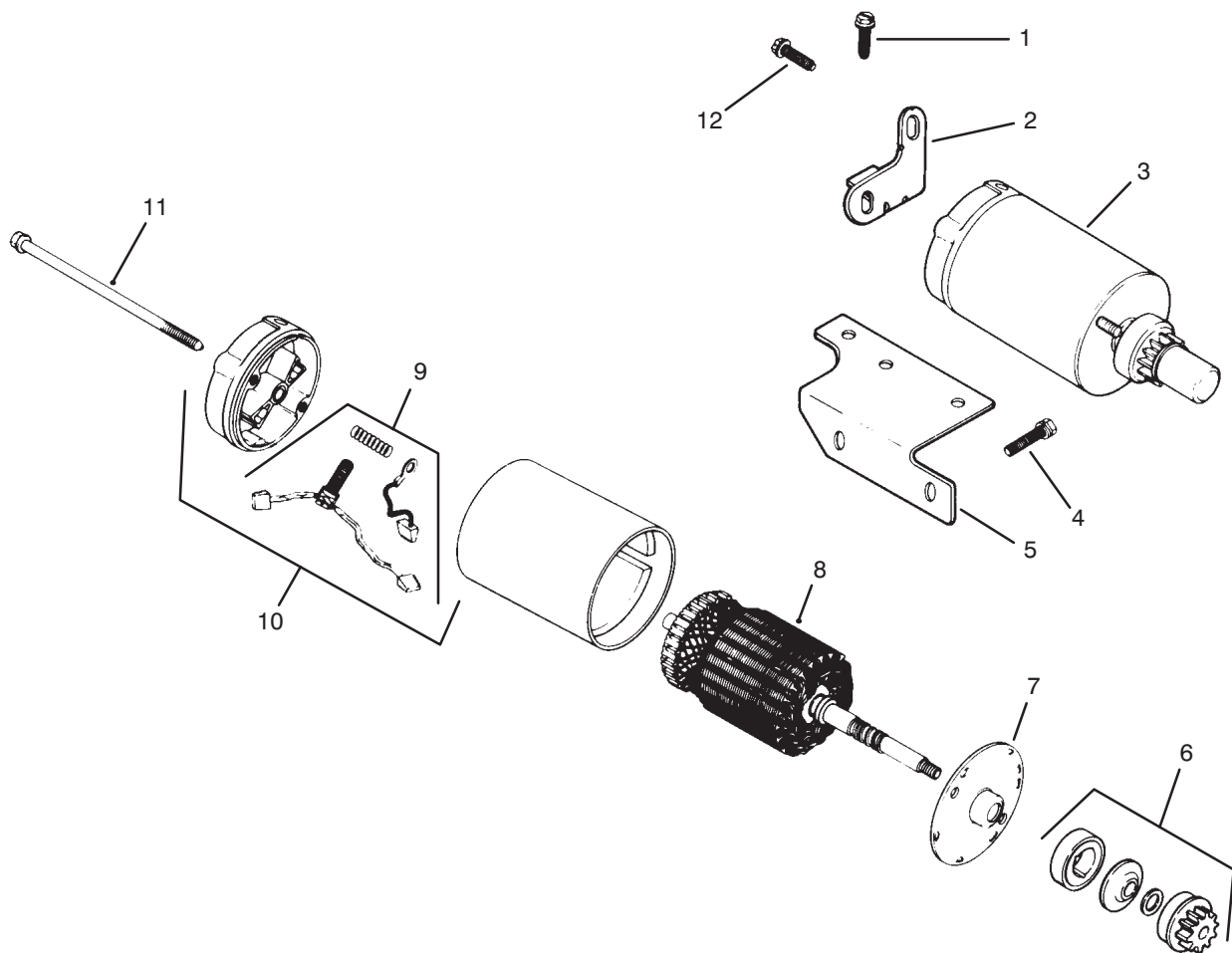
T-1837

ENGINE KOHLER MODEL M14S SPEC. NO. 601561 (Cont.)

Ref. No.	Part No.	Description	No. Used
1	47 063 10	Baffle - Cylinder	1
2	52 086 11	Screw - Hex. Washer Hd.	6
3	47 063 07	Baffle - Inner	1
4	47 027 42	Housing - Blower	1
5	47 063 11	Baffle - Side Air	1

Ref. No.	Part No.	Description	No. Used
6	45 063 08	Baffle - Head	1
7	X-25-53	Washer - Plain	1
8	47 086 08	Screw - Pozidriv T.H.	1
*	47 113 36	Decal - Horsepower	1

*Not Illustrated



T-1838

ENGINE KOHLER MODEL M14S SPEC. NO. 601561 (Cont.)

Ref. No.	Part No.	Description	No. Used
1	X-67-83	Screw - Hex. Washer Hd.	1
2	45 126 17	Brace - Tail	1
3	41 098 06	Starter Assembly (Incl. Ref. #6-11)	1
4	X-159-2	Screw - Hex. Cap	2
5	47 126 29	Bracket - Solenoid	1
6	41 755 33	Kit - Drive	1
7	41 081 05	Cap - End, Drive	1

Ref. No.	Part No.	Description	No. Used
8	45 170 03	Armature	1
9	82 755 15	Kit - Brush	1
10	41 227 05	Cap/Commutator Assy. (Incl. Ref. #9)	1
11	41 086 19	Bolt	2
12	X-67-62	Screw - Hex. Washer Hd.	1
*	25 450 03	Tag - Caution	1

*Not Illustrated

TORO PART NUMBER INDEX

Part No.	Description	Pg. No.	Ref. No.	Qty.	Part No.	Description	Pg. No.	Ref. No.	Qty.
10-6830	Stud - Drive	16	20	8	27-1960	Hub - Engine	8	29	1
10-6830	Stud - Drive	2	35	4	27-6600	Spacer - Coupler	8	25	4
10-7070	Key - Square	8	28	1	28-3670	Shaft - Trunion	9	12	1
16-3989	Engine Assembly	7	31	1	28-4210	Solenoid	4	32	1
17-4710	Hub - Wheel	16	21	2	28-8080	Boot - Terminal	20	20	1
17-4710	Hub - Wheel	2	28	1	29-6120	PLate - Pump	13	10	1
18-1520	Filter - Fuel	7	18	1	29-6150	Spring - Leaf	13	15	1
18-6320	Washer - Steering	2	40	3	29-6162	Switch - Neutral	13	4	1
18-6380	Pin - Steering Adjustment	2	38	2	29-6170	Leaf Spring Assembly	13	14	1
18-6700	Tube - Hydraulic	16	1	1	37-8030	Mount - Pump	8	32	1
18-6710	Tube - Hydraulic	16	12	1	38-0860	Spring - Compression	12	11	1
18-6720	Tube - Hydraulic	16	13	1	38-3400	Guard - Rubber	1	13	5
18-6730	Tube - Hydraulic	16	2	1	38-3400	Guard - Rubber	16	45	1
18-7160	Pin - Cylinder	16	35	1	39-9600	Clamp - Mounting	4	18	1
18-7310	Pin - Cylinder	16	11	1	43-1730	Body	15	7	1
18-8000	Mount - Rubber	7	26	3	43-1950	Lift Valve Assembly	14	20	1
21-5360	Hose - Hydraulic	21	6	1	43-5220	Ring - Retaining	19	12	1
21-5360	Hydraulic Hose Assembly	8	9	1	43-5230	Shaft with Clevis	19	13	1
21-5370	Hose - Hydraulic	16	3	2	43-5260	Barrel - w/Clevis & Ports	19	2	1
21-5370	Hydraulic Hose Assembly	8	10	2	43-8590	Head - Hydraulic Filter	21	11	1
22-4670	Hose - Hydraulic	16	6	2	44-2230	Coupling - Rubber	8	30	1
22-4670	Hydraulic Hose Assembly	14	13	2	46-4810	Rim - Wheel	2	16	1
22-8330	Plug	15	1	2	46-4810	Rim - Wheel	16	25	2
22-8340	Spring	15	3	2	46-8400	Bearing - Needle	9	42	1
22-8350	Ball	15	4	2	46-8560	Screw - Hex. Flange Hd.	1	18	10
22-8360	Pin - Cam	15	6	2	46-8560	Screw - Hex. Flange Hd.	8	36	3
22-8370	Seat - Check Valve	15	5	2	46-8810	Stop - Leaf Spring	13	6	1
22-8380	Retainer - Spring	15	10	2	49-2040	Screw - Self Tapping	13	12	3
22-8410	Spring	15	11	1	49-7840	Kit - Shim Pack	9	16	2
22-8420	Spool	15	8	1	49-8470	Kit - Shim-Pack	10	53	2
22-8480	Ring - Spool Retaining	15	13	1	49-8480	Shaft - Trunion	9	28	1
22-8490	Ring - Retaining	15	14	1	49-8510	Kit - Charge Relief Valve	10	*	1
22-8500	O-Ring	15	9	2	49-8520	Kit - Implement Relief	10	*	1
23-0660	Ignition Switch Assembly	4	17	1	49-9500	Base - Engine	7	28	1
23-3030	Spacer	15	12	1	49-9550	Pipe - Exhaust	7	33	1
23-9740	Element - Hydraulic Filter	21	16	1	49-9580	Bracket - Muffler	7	8	1
24-0760	Cooler - Oil	1	2	1	49-9590	Shield - Rubber	1	21	1
25-2380	Plate - Thrust	9	39	1	49-9600	Hub - Pump	8	31	1
25-2390	Plate - Valve	9	40	1	49-9970	Hose - Hydraulic	8	22	1
25-2400	Gasket	9	43	1	49-9980	Retainer - Rubber Shield	1	25	1
25-2430	Pin - Straight	9	41	1	51-0590	Hose - Hydraulic	14	16	1
25-2450	Plate - Swash	9	37	1	51-0590	Hose - Hydraulic	8	19	1
25-2460	Plug	9	14	2	51-0600	Hose - Hydraulic	16	31	2
25-2480	Spring - Charge Relief	9	32	1	51-0600	Hose - Hydraulic	2	31	2
25-2490	Ball - Check Valve	9	47	2	51-0620	Tube - Hydraulic	14	17	1
25-2510	Washer	9	11	2	51-0620	Tube - Hydraulic	16	43	1
25-2530	Pin - Straight	9	26	1	51-0670	Hose - Fuel	7	19	1
25-2570	Spring - Relief Valve	9	17	1	51-0700	Muffler	7	2	1
25-2600	Kit - Cylinder Block	9	5	1	51-0780	Slider - Seat	6	14	1
25-2630	Ring	9	3	1	51-0790	Adjuster - Seat	6	15	1
25-2640	Spring - Valve Check	9	48	2	51-3150	Shim - Spring	13	13	1
25-2650	Plug - Check Valve	9	50	2	51-3161	Trim	1	20	1
25-2680	Assembly - Gerator	9	25	1	51-3162	Trim	1	16	1
25-2690	Housing - Charge Pump	9	21	1	52-2480	Spacer	16	46	1
25-3180	Kit - Check Valve	10	*	1	53-9470	Hose - Hydraulic	8	14	1
25-3210	Seal - Lip	9	10	2	53-9470	Hose - Hydraulic	21	15	1
25-3220	Kit - Charge Pump	10	*	1	54-7890	Kit - Housing	9	8	1
26-2810	Lever - Pump	13	20	1	56-2520	Fitting - Fuel Shut-Off	20	27	1
26-2950	Standoff - Wire	8	12	1	56-7720	Bolt - Battery	20	16	2
26-3790	Nut - Hex.	2	27	1	56-7976	Clamp - Tube	16	29	2
26-3790	Nut - Lock	16	24	2	57-5420	Screw-Hex. Hd.	21	1	1

*Not Illustrated

TORO PART NUMBER INDEX (Cont.)

3316-836 A

Part No.	Description	Pg. No.	Ref. No.	Qty.	Part No.	Description	Pg. No.	Ref. No.	Qty.
61-3230	Spacer - Fuel Filter	7	13	1	84-8050	Hose - Fuel	20	25	1
63-8360	Key - Ignition	4	8	2	84-8110	Base - Fuel Tank	20	4	1
63-8440	Decal - Hot Surface	14	3	1	84-8160	Base - Hydraulic Tank	21	21	1
66-2950	Hourmeter Assembly	4	3	1	84-8170	Shroud - Lift Valve	14	2	1
67-1690	Fitting - Fuel 90°	7	30	1	85-6570	Hose - Hydraulic	21	7	1
67-8020	Shaft - Pump	9	6	1	85-6610	Shaft - Steering Upper	2	7	1
67-8050	Bearing - Needle	9	22	1	85-6680	Shield - Engine	1	8	1
67-8060	Seal - Lip	9	23	1	85-8290	Tire	2	25	1
69-9760	Plate - Cover	16	32	1	85-8290	Tire	16	26	2
70-2770	Head	19	10	1	85-8900	Lever - Lift	14	23	1
70-2780	Piston	19	5	1	85-8940	Flange - Bearing Lube	2	21	1
74-0340	Cushion - Rubber	6	12	2	85-8950	Flange - Bearing	2	18	1
74-0720	Tube - Manual	6	2	1	85-8960	Spacer	12	4	1
74-9100	Pad - Forward Pedal	12	16	1	85-9180	Sprocket	2	12	1
74-9110	Pad - Reverse Pedal	12	5	1	85-9200	Knuckle - Steering	2	1	1
75-0540	Tether - Oil Cap	21	2	1	85-9210	Shaft - Steering Lower	2	2	1
75-9830	Hydraulic Motor Assembly	2	32	1	86-7440	Wire - Solenoid-Starter	7	5	1
75-9831	Hydraulic Motor Assembly	16	28	1	86-7440	Wire - Solenoid-Starter	4	31	1
75-9840	Hydraulic Motor Assembly	16	40	1	86-7450	Wire - Battery-Ground	7	11	1
76-0800	Kit - Seal	17	*	1	86-7450	Wire - Battery-Ground	20	17	1
76-0800	Kit - Seal	18	*	1	86-7570	Wire - Battery-Solenoid	20	21	1
76-0800	Kit - Seal	3	*	1	86-7570	Wire - Battery-Solenoid	4	30	1
76-0810	Assembly - Housing	17	*	1	86-7610	Plate - Seat	6	16	1
76-0810	Assembly - Housing	18	*	1	86-7640	Box - Litter	20	29	1
76-0810	Assembly - Housing	3	*	1	88-8210	Plug - Standard Thread	9	19	1
76-0820	Link - Drive	17	13	1	88-8220	Valve - By-Pass	9	4	1
76-0820	Link - Drive	18	13	7	88-8350	Tab - Bearing	2	14	1
76-0830	Rotor Set	17	*	1	88-8480	Bracket - Pivot	14	12	1
76-0830	Rotor Set	18	*	1	92-1678	Battery	20	15	1
76-0840	Manifold	17	22	1	92-1705	Screen - Filter	21	23	1
76-0840	Manifold	18	22	1	92-1706	Decal - Operating	1	7	1
76-0840	Manifold	3	22	1	92-2343	Pedal - Traction	12	6	1
76-0850	Bearing - Thrust	17	12	1	92-2344	Stud - Adjuster	12	12	1
76-0850	Bearing - Thrust	18	12	1	92-5000	Frame Assembly	2	44	1
76-0850	Bearing - Thrust	3	12	1	92-5018	Clamp - Battery	20	12	1
76-0860	Shaft - Coupling	17	11	1	92-5024	Panel - Dash	4	29	1
76-0860	Shaft - Coupling	18	11	1	92-5029	Shield - Blower	1	17	1
76-0860	Shaft - Coupling	3	11	1	92-5035	Steering Shaft Assembly	2	9	1
76-0870	Plate - Wear	17	18	1	92-5037	Shroud - Dash	1	1	1
76-0870	Plate - Wear	18	18	1	92-5039	Chain - Steering	2	48	1
76-0870	Plate - Wear	3	18	1	92-5046	Harness - Wire	5	1	1
76-0880	Assembly - Commutator	17	*	1	92-5046	Wire Harness Assembly	4	38	1
76-0880	Assembly - Commutator	18	*	1	92-5048	Shield - Cooler	1	23	1
76-0880	Assembly - Commutator	3	*	1	92-7150	Tube - Hydraulic	1	9	1
76-0890	Assembly	17	29	1	92-7151	Tube - Hydraulic	14	4	1
76-0930	Link - Drive	3	13	7	92-7151	Tube - Hydraulic	1	6	1
76-0940	Assembly - Cover, End	18	24	1	92-7152	Hose - Fuel	20	8	1
76-0940	Assembly - Cover, End	3	24	1	92-7153	Rod - Traction	12	10	1
76-0950	Rotor Set	3	*	1	92-7155	Choke Control Assembly	4	7	1
76-1020	Screw - Cap Hex. Hd.	18	14	1	92-7156	Control - Throttle	4	22	1
76-1030	Screw - Cap Hex. Hd.	3	14	1	92-7157	Decal - Dash	4	14	1
76-1040	Screw - Cap Hex. Hd.	17	14	7	92-7158	Tread - Foot RH	1	29	1
76-1420	Wheel - Steering	2	5	1	92-7159	Tread - Foot LH	1	14	1
76-8750	Plate - Warning	8	2	1	92-7160	Clip - Fuel Hose	20	9	1
80-1910	Decal - Lift	14	1	1	92-7170	Base - Seat	6	13	1
83-0820	Ammeter Assembly	4	15	1	92-7180	Fork - Steering	2	13	1
83-7000	Hydraulic Cylinder Assembly	16	44	1	92-7183	Tube - Hydraulic	16	38	1
83-7250	Kit - Seal Repair	19	*	1	92-7183	Tube - Hydraulic	16	39	1
83-7260	Cone - Relief Valve	9	18	1	92-7186	Tank - Fuel	20	2	1
83-7260	Cone - Relief Valve	9	33	1	92-7187	Reservoir - Hydraulic Oil	21	3	1
84-8050	Hose - Fuel	7	14	1	92-7188	Decal - INFIELD PRO 3000	1	*	2

*Not Illustrated

TORO PART NUMBER INDEX (Cont.)

Part No.	Description	Pg. No.	Ref. No.	Qty.	Part No.	Description	Pg. No.	Ref. No.	Qty.
92-8776	Plug Assembly	9	51	2	251-259	Bearing - Ball	13	18	1
92-8777	Seal - O-Ring	9	52	2	251-352	Bearing Assembly	2	19	2
92-8790	Hydraulic Pump Assembly	8	7	1	252-82	Bearing - Needle	9	9	2
92-8960	Decal - SAND PRO 3000	1	24	2	254-61	Cup - Bearing	2	42	2
92-8962	Panel - Front	1	30	1	254-70	Cone - Bearing	2	41	2
92-8963	Mount - Cover	8	35	1	256-185	Bushing - Sleeve	2	8	2
92-8965	Decal - Service	6	11	1	256-219	Bushing - Flange	12	3	2
92-8967	Shield - Dampener	8	3	1	256-287	Bushing - Flange	2	3	2
92-8969	Axle-Front	2	26	1	2710-11	Link - Connecting	2	39	2
92-8972	Clamp - Seat	6	10	2	2710-20	Offset Link Assembly	14	10	1
92-8973	Angle	6	8	2	285-17	Plug - Pipe	9	1	2
92-8976	Seat Assembly	6	1	1	302-11	Fitting - Grease	2	43	1
93-3101	Cap - Fuel	20	1	1	321-4	Screw - Cap Hex. Hd.	21	10	2
93-4365	Oil Cap Assembly	21	24	1	321-4	Screw - Cap Hex. Hd.	1	32	1
218-461	Nut - Hex.	4	9	1	321-6	Screw - Cap Hex. Hd.	13	16	2
218-489	Fuse Holder Assembly	4	13	1	321-18	Screw - Cap Hex. Hd.	16	30	1
218-598	Fuse - 20 Amp.	4	12	1	321-23	Screw - Cap Hex. Hd.	14	21	4
2210-118	Gasket - Exhaust	7	32	1	322-2	Screw - Cap Hex. Hd.	6	7	8
232-35	Valve - Stem	16	22	2	322-3	Screw - Cap Hex. Hd.	20	19	2
232-35	Valve - Stem	2	24	1	322-4	Screw - Cap Hex. Hd.	1	11	2
233-25	Knob - Throttle	4	6	1	322-4	Screw - Cap, Hex. Hd.	9	24	4
233-39	Knob - Lift Valve	14	7	1	322-5	Screw - Cap Hex. Hd.	2	10	4
237-22	O-Ring	9	2	1	322-5	Screw - Cap Hex. Hd.	1	22	3
237-30	O-Ring	9	44	2	322-6	Screw - Cap Hex. Hd.	6	3	4
237-42	O-Ring	15	2	2	322-14	Screw - Cap Hex. Hd.	12	1	1
237-42	Seal - O-Ring	14	5	2	322-16	Screw - Cap Hex. Hd.	8	26	4
237-42	Seal - O-Ring	8	17	2	322-17	Screw - Cap Hex. Hd.	13	3	1
237-42	Seal - O-Ring	16	41	1	323-6	Screw - Cap Hex. Hd.	1	10	2
237-78	O-Ring	19	1	2	323-6	Screw - Cap Hex. Hd.	20	13	3
237-78	Seal - O-Ring	16	8	2	323-6	Screw - Cap Hex. Hd.	21	13	3
237-78	Seal - O-Ring	14	14	2	323-6	Screw - Cap Hex. Hd.	8	18	2
237-79	Seal - O-Ring	21	4	1	323-7	Screw - Cap Hex. Hd.	7	3	1
237-79	Seal - O-Ring	8	8	3	323-7	Screw - Cap Hex. Hd.	8	5	2
237-79	Seal - O-Ring	16	15	4	323-8	Screw - Cap Hex. Hd.	7	22	2
237-80	Seal - O-Ring	8	16	1	323-9	Screw - Cap Hex. Hd.	7	16	1
237-80	Seal - O-Ring	21	19	1	323-11	Screw - Cap Hex Hd.	9	46	4
237-80	Seal - O-Ring	2	29	2	323-11	Screw - Cap Hex. Hd.	7	21	1
237-86	O-Ring	9	15	2	323-13	Screw - Cap Hex. Hd.	7	29	2
237-86	O-Ring	9	49	2	323-29	Screw - Cap Hex. Hd.	2	23	3
237-95	O-Ring	9	27	1	325-5	Screw - Cap Hex. Hd.	16	17	4
237-100	Grommet	1	19	1	325-8	Screw - Cap Hex. Hd.	8	11	2
237-136	Grommet	20	3	4	325-10	Screw - Cap Hex. Hd.	16	19	8
237-136	Grommet	21	22	4	3210-4	Screw - Cap Hex. Hd.	13	1	1
240-9	Grommet	20	28	3	3217-6	Nut - Hex.	7	35	2
242-50	Nut - Lug	2	17	4	3217-7	Nut - Hex.	7	9	5
242-50	Nut - Lug	16	23	8	3217-9	Nut - Hex.	16	34	8
2410-73	Retainer - Tether	21	25	1	3217-9	Nut - Lock	8	33	2
2412-36	Clamp - Hose	20	7	2	3217-16	Nut - Hex.	13	8	2
2412-37	Muffler Clamp Assembly	7	1	1	3217-25	Nut - Hex.	4	26	2
2412-39	Clamp - R	1	4	2	3218-13	Nut - Jam	4	35	2
2412-41	Clamp - R	1	26	1	3219-2	Nut - Hex.	13	2	1
2412-44	Clamp - R	7	17	1	3219-3	Nut - Hex.	4	24	1
2412-70	Clamp - R	16	47	2	3219-14	Nut - Hex.	4	21	8
2412-73	Clamp - R	20	23	1	3220-4	Nut - Jam	12	13	2
2412-73	Clamp - R	1	33	1	3234-33	Screw - Cap Hex. Hd.	4	2	4
2412-73	Clamp - R	4	39	1	3234-33	Screw - Hex. Flange Hd.	1	31	4
2412-81	Clamp - R	7	20	1	3241-5	Screw - Square Hd. Set	8	27	4
2412-108	Clamp - Hose	7	15	3	3249-11	Screw - Round Hd.	13	5	2
2412-108	Clamp - Hose	20	26	1	3250-36	Screw - Phillips Hd.	20	6	4
2412-133	Clamp - R	6	5	2	3250-36	Screw - Phillips Hd.	21	20	4
251-8	Bearing - Ball	9	35	1	3253-3	Washer - Lock	21	9	2

*Not Illustrated

TORO PART NUMBER INDEX (Cont.)

3316-836 A

Part No.	Description	Pg. No.	Ref. No.	Qty.	Part No.	Description	Pg. No.	Ref. No.	Qty.
3253-4	Washer - Lock	6	6	4	3296-12	Nut - Lock	4	23	2
3253-4	Washer - Lock	4	34	2	3296-12	Nut - Lock	7	24	6
3253-4	Washer - Lock	7	34	2	3296-23	Nut - Lock	2	33	2
3253-5	Washer - Lock	8	4	4	3296-29	Nut - Lock	2	4	4
3253-5	Washer - Lock	7	10	4	3296-29	Nut - Lock	12	7	1
3253-7	Washer - Lock	16	27	8	3296-29	Nut - Lock	6	9	12
3253-7	Washer - Lock	8	34	2	3296-29	Nut - Lock	13	17	1
3253-17	Washer - Lock	4	33	2	3296-29	Nut - Lock	20	18	2
3254-1	Washer - Lock	4	20	2	3296-29	Nut - Lock	8	23	4
3254-5	Washer - Lock ITLW	4	10	1	3296-29	Nut - Lock	1	28	3
3254-6	Washer - Lock ITLW	4	25	1	3296-39	Nut - Lock	20	5	3
3254-9	Washer - Lock ITLW	13	7	2	3296-39	Nut - Lock	12	15	1
3255-7	Washer - Lock	4	36	1	3296-39	Nut - Lock	2	15	3
3255-7	Washer - Lock ETLW	13	11	3	3296-39	Nut - Lock	21	17	3
3255-9	Washer - Lock ETLW	7	12	1	3296-42	Nut - Lock	13	9	2
3255-20	Washer - Lock ITLW	4	27	2	3296-42	Nut - Lock	14	15	4
3256-3	Washer - Flat	6	4	4	3296-42	Nut - Lock	20	22	1
3256-14	Washer - Flat	7	23	6	3296-42	Nut - Lock	1	34	1
3256-21	Washer - Flat	4	19	2	3296-44	Nut - Lock	7	6	1
3256-22	Washer - Flat	4	1	2	3296-59	Nut - Lock	7	7	1
3256-22	Washer - Flat	20	11	2	32103-12	Nut - Wing	20	10	2
3256-23	Washer - Flat	12	2	1	32104-42	Screw - Cap Hex. Hd.	4	37	3
3256-23	Washer - Flat	8	24	4	32104-76	Screw - Cap Hex. Hd.	14	22	2
3256-23	Washer - Flat	1	27	3	32105-2	Screw - Cap Hex. Hd.	4	5	2
3256-24	Washer - Flat	7	4	3	32120-11	Ring - Retaining	9	36	1
3256-24	Washer - Flat	21	12	3	32120-15	Ring - Retaining	9	34	1
3256-24	Washer - Flat	12	14	2	32121-15	Pin - Spiral	2	47	2
3256-24	Washer - Flat	20	14	3	32121-16	Pin - Roll	8	13	1
3256-25	Washer - Flat	12	9	1	32121-24	Pin - Roll	13	19	1
3256-26	Washer - Flat	16	16	4	32121-91	Pin - Spring	9	38	3
3256-35	Washer - Flat	1	12	2	32121-111	Pin - Spiral	2	6	1
3256-78	Washer - Flat	16	49	1	32121-112	Pin - Spiral	2	11	1
3257-32	Key - Woodruff	8	6	1	32136-9	Nut - Slotted	2	46	1
3257-32	Key - Woodruff	9	7	1	32144-11	Screw - Hex. Flange Hd.	4	4	2
3257-42	Key - Woodruff	17	17	1	32144-11	Screw - Self Tapping	16	48	1
3257-42	Key - Woodruff	18	17	1	32151-46	Ring - Retaining	9	13	2
3257-42	Key - Woodruff	3	17	1	32152-10	Nut	19	3	1
3257-42	Key - Woodruff	16	18	2	353-212	Fitting - Hydraulic 45°	16	42	1
3257-42	Key - Woodruff	2	34	1	353-212	Fitting - Hydraulic 90°	14	19	1
3269-32	Rivet - Pop	8	1	2	353-370	Fitting - Hydraulic 90°	8	15	1
3272-16	Pin - Cotter	12	8	1	353-370	Fitting - Hydraulic 90°	21	18	1
3272-23	Pin - Cotter	16	9	4	353-372	Fitting - Hydraulic 90°	1	5	2
3272-37	Pin - Cotter	2	45	1	353-374	Fitting - Hydraulic 90°	8	21	1
3274-69	Screw - Hex. Button Hd.	20	24	1	353-379	Fitting - Hydraulic 45°	21	5	1
3274-93	Screw - Hex. Socket Hd.	2	37	2	353-424	Fitting - Hydraulic Tee	16	5	2
3290-134	Screw - Cap Hex. Hd.	7	27	6	353-425	Fitting - Hydraulic Tee	16	4	2
3290-357	Nut - Flange Lock	1	3	2	353-426	Fitting Hydraulic 90°	16	14	4
3290-360	Screw - Cap Hex. Hd.	14	8	2	353-427	Fitting - Hydraulic 45°	2	30	2
3290-378	Tie - Cable	1	*	1	353-431	Fitting - Hydraulic 45°	16	36	1
3290-378	Tie - Cable	7	25	1	353-506	Fitting - Hydraulic Straight	21	14	1
3290-378	Tie - Cable	16	37	1	353-511	Fitting - Hydraulic 90°	14	6	1
3290-496	Nut - Tinnerman	1	15	2	353-511	Fitting - Hydraulic 90°	8	20	1
3296-2	Nut - Lock	14	24	2	353-535	Fitting - Hydraulic 45°	21	8	1
3296-4	Nut - Lock	2	36	2	353-877	Fitting - Hydraulic Tee	14	18	1
3296-8	Nut - Lock	16	33	1	354-132	Fitting Hydraulic 90°	16	7	1

*Not Illustrated

PRODUCT CHANGES

In an effort to make improvements available to TORO owners as quickly as possible, minor changes are incorporated into Toro's products from time to time that do not become immediately shown in the Parts Catalog. If such a change has been made in your unit, which is not reflected in your manual, see your TORO Distributor or his Authorized TORO Service Dealer for information and part numbers.

IDENTIFICATION AND ORDERING

MODEL AND SERIAL NUMBERS

The Sand Pro 3000 has two identification numbers; a model number and a serial number. The two numbers are stamped on a plate located on the left fender. In any correspondence concerning the Sand Pro 3000, supply model and serial numbers to assure that correct information and replacement parts are obtained.

To order replacement parts from an Authorized TORO Service Dealer, supply the following information:

1. Model and serial number of the Sand Pro 3000.
2. Part number, description, and the quantity of part(s) desired.

NOTE: Do not order by reference number if a parts catalog is being used; use the PART NUMBER.

TABLE OF CONTENTS

Description	Page	Description	Page
Shrouding & Oil Cooler Assembly	1	Lift Valve Installation Assembly	14
Front Wheel & Steering Assembly	2	Hydraulic Lift Valve Assembly No. 43–1950	15
Hydraulic Drive Motor Front		Rear Wheel Drive Assembly	16
Left Rear No. 75–9830	3	Hydraulic Drive Motor Right Rear	
Dash Panel Assembly	4	Right Rear No. 75–9840	17
Electrical Schematic	5	Hydraulic Drive Motor Left Rear	
Seat Assembly	6	Left Rear No. 75–9831	18
Engine Installation Assembly	7	Hydraulic Cylinder Assembly No. 83–7000	19
Hydraulic Pump Installation Assembly	8	Fuel Tank Assembly	20
Hydraulic Pump Assembly No. 92–8790	9–10	Hydraulic Oil Reservoir & Filter Assembly	21
Hydraulic Schematic	11	Kohler Engine Model No. M14S	
Traction Pedal Assembly	12	Spec. 601561	22–29
Neutral System Assembly	13	TORO Part Number Index	30–33

