



**Count on it.**

**Parts Catalog**

**1800 Power Curve® Snowthrower**

Model No. 38025—Serial No. 31000001 and Up

# Ordering Replacement Parts

To order replacement parts, please supply the part number, the quantity, and the description of each part desired.

## Understanding Reference Numbers

Each identified part in an illustration has a reference number. The reference number for a part also appears in the parts list, along with other information about the part.

This catalog uses two special reference number formats, one to indicate parts in a service assembly and another to indicate the quantity of a given part in an illustration.

## Service Assembly Reference Numbers

Parts in service assemblies have reference numbers in the form a:b. The a represents the reference number of the entire service assembly and the b represents a sequential number unique to each part within the service assembly.

For example, a wheel assembly might be identified by reference number 6, the tire by 6:1, the valve by 6:2, and the wheel by 6:3. When you order the assembly identified by reference number 6, you receive all parts identified by reference numbers 6:1, 6:2, and 6:3. However, you may also order any part individually. Reference numbers of this type appear in illustration and in parts lists.

## Reference Numbers Indicating Quantity

In an illustration, if a reference number indicates more than one part, the reference number has the form nX y. The n represents the quantity of the part, the X is the multiplication symbol, and the y represents the reference number.

For example, in an illustration, the reference number 2X 37 means that two of the parts identified by reference number 37 are indicated.

# List of Abbreviations

**AR:** as required

**ASM:** assembly

**BBC:** blade brake clutch

**CARR:** carriage

**CCW:** counter clock wise

**CW:** clockwise

**DEG:** degrees

**ECM:** electronic control module

**EXT:** external

**FH:** flat head

**GA:** gauge

**HD:** heavy-duty

**HF:** hex flange

**HH:** hex head

**HHF:** hex head flange

**HHFTF:** hex head flange thread forming

**HJ:** hex jam

**HLH:** hex lag head

**HOC:** height-of-cut

**HSBH:** hex socket button head

**HSFH:** hex socket flat head

**HSH:** hex socket head

**HWH:** hex washer head

**HWHTF:** hex washer head thread forming

**HYD:** hydraulic

**LH:** left hand

**NI:** nylon insert

**NPTF:** national pipe thread fine

**PFH:** phillips flat head

**PPH:** phillips pan head

**PPHTF:** phillips pan head thread forming

**PRH:** phillips round head

**PTH:** phillips truss head

**PTO:** power-take-off

**RH:** right hand

**ROPS:** roll-over protection system

**SFH:** slotted fillister head

**SHH:** slotted hex head

**SHWH:** slotted hex washer head

**SPH:** slotted pan head

**SQH:** square head

**SRH:** slotted round head

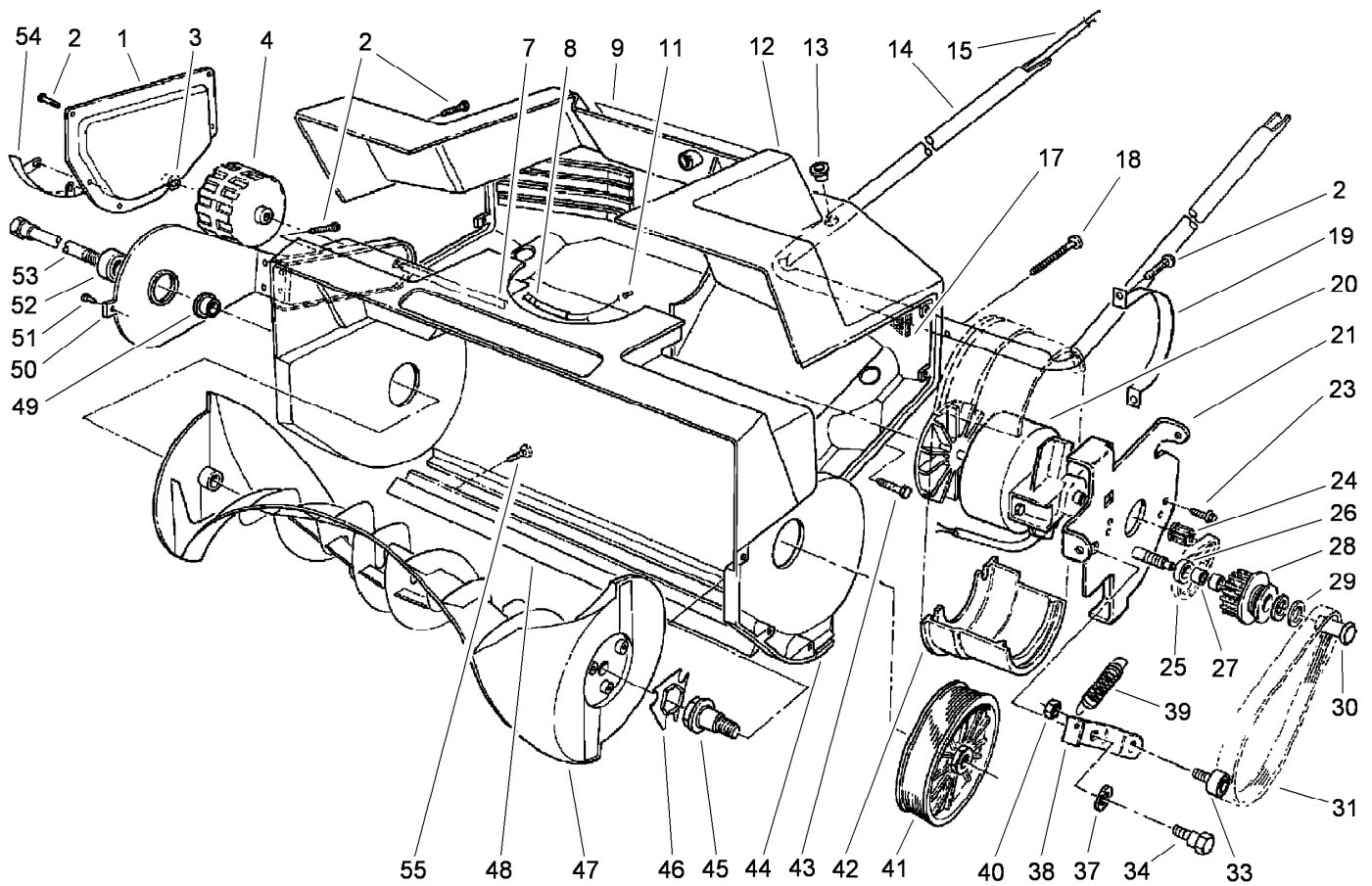
**STD:** standard

**TAP:** self tapping

**TTH:** torx truss head

# Contents

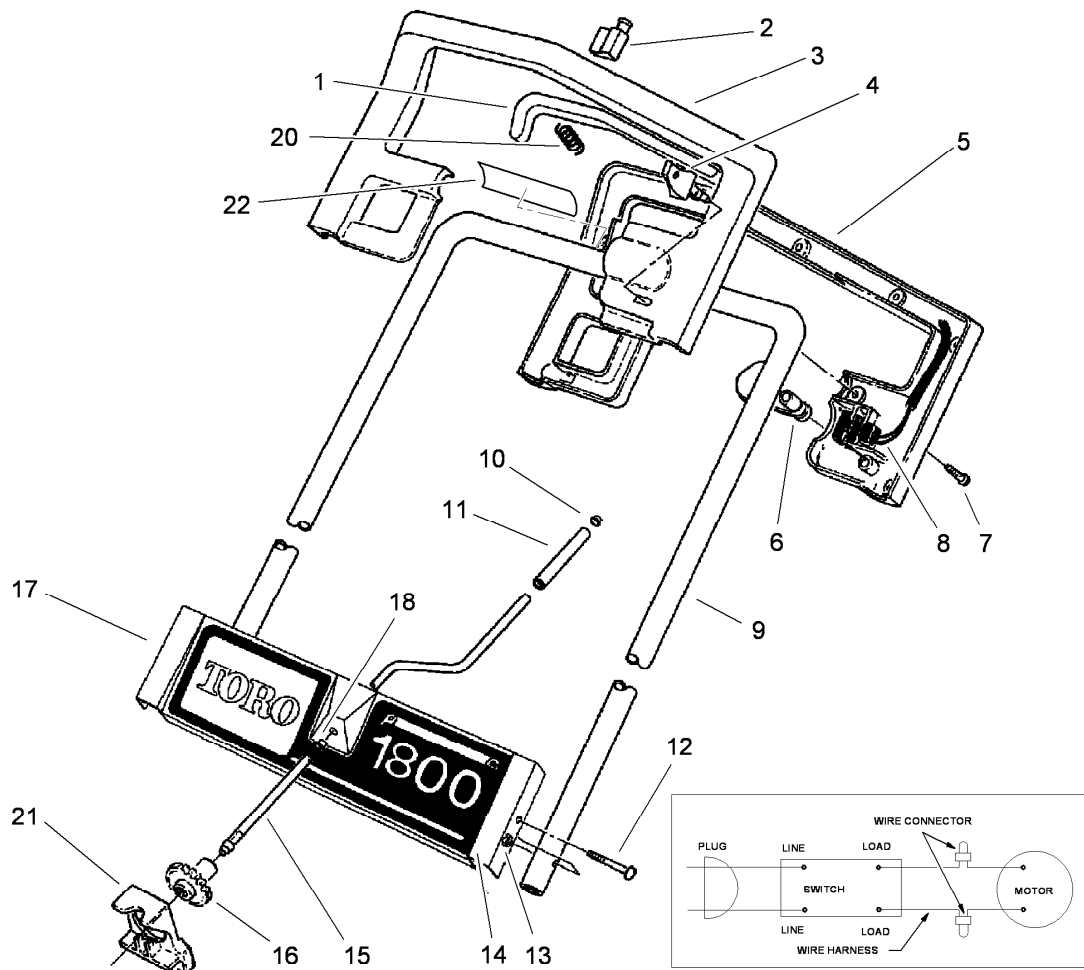
Housing and Rotor Assembly ..... 4  
Handle Assembly ..... 5  
Chute Assembly ..... 6



## Housing and Rotor Assembly

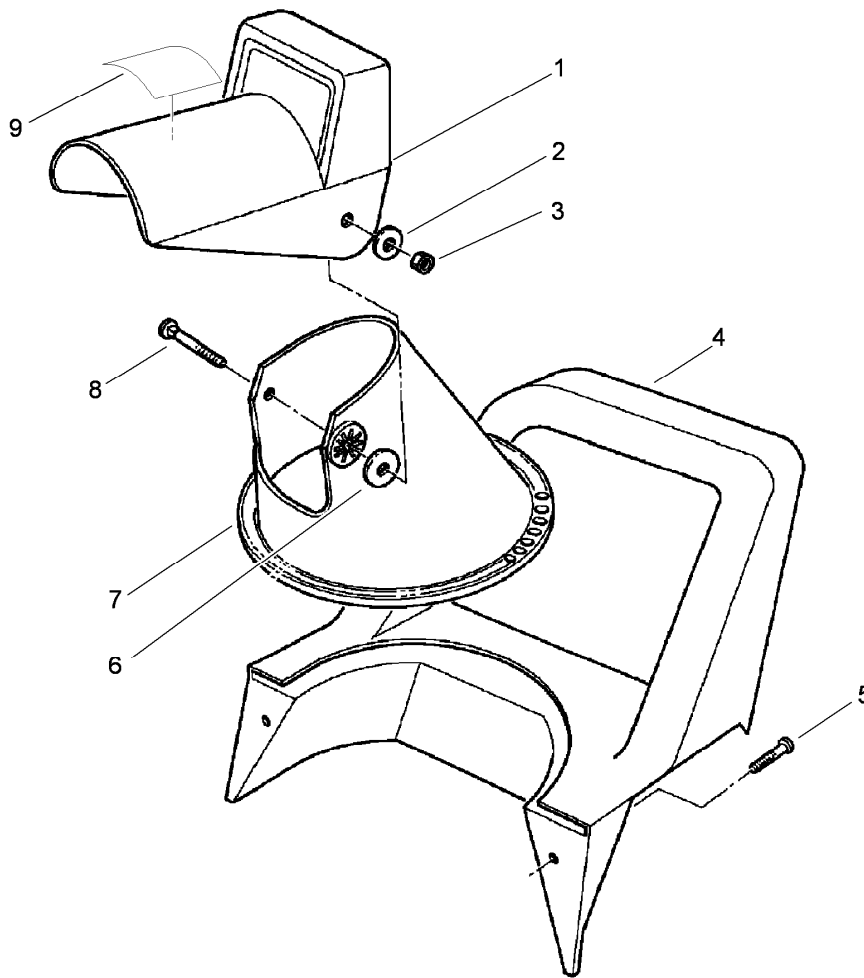
Ref.	Part Number	Qty.	Description	Ref.	Part Number	Qty.	Description
1	73-9370	2	Plate-Side	30	73-3530	1	Bolt-Idler
2	94-4496	19	Screw-PPH	31	61-8802	1	Belt-Drive
3	32112-1	2	Pushnut-Cap, Washer	33	73-5730	1	Bearing ASM (Incl. Ref. #40)
4	73-5720	2	Wheel	34	27-0411	1	Screw-Shoulder
7	73-0370	1	Shaft-Axle	37	25-5641	1	Washer
8	64-5820	1	Relief-Strain	38	73-3600	1	Bracket-Idler
9	73-0450	1	Decal-Danger	39	73-3680	1	Spring
11	218-511	2	Connector	40	3296-47	1	Nut-Lock, NI
12	73-9320	1	Shroud-Housing	41	73-3550	1	Pulley-Driven
13	256-307	1	Bushing	42	73-3650	2	Clamp-Motor Bracket
14	73-0280	1	Tube-Lower Handle	43	32104-97	2	Screw-HH
15	73-3630	1	Wire Harness	44	73-3640	1	Housing-Rotor
17	73-1800	1	Filter-Foam	45	73-0990	1	Shaft-Driver, Rotor
18	32144-88	4	Screw-Pan Head	46	73-0860	1	Coupler-Rotor
19	73-0120	1	Strap-Motor	47	73-8590	1	Rotor
20	73-3520	1	Motor	48	73-3690	1	Scraper
21	73-8680	1	Motor Plate ASM	49	73-8580	1	Bushing
23	32144-100	2	Screw-Hex Washer Hd.	50	73-0010	2	Wheel Bracket ASM (Incl. Ref. #52)
24	73-3660	1	Pulley-Driver	51	3290-271	2	Rivet-Pop
25	73-0160	1	Belt-Timing	52	61-8780	2	Bearing-Ball
26	73-3580	1	Washer	53	73-0020	1	Shaft-Rotor
27		2	Bearing-Needle ●	54	73-1570	2	Skid-Housing
28	73-3570	1	Idler Pulley ASM (Incl. Ref. #27)	55	32144-108	2	Screw-Pan Head
29	73-0041	2	Washer-Thrust				

● Not serviced separately



## Handle Assembly

Ref.	Part Number	Qty.	Description
1	73-3510	1	Bar-Switch
2	64-4930	1	Switch
3	73-5700	1	Handle-Control, Upper
4	73-5190	1	Key
5	73-5710	1	Handle-Control, Lower
6	73-5690	1	Tab-Lock
7	94-4496	11	Screw-PPH
8	73-5642	1	Cord-Supply
9	73-3460	1	Tube-Handle, Upper
10	32112-1	1	Pushnut-Cap, Washer
11	73-0251	1	Sleeve-Crank, Chute
12	33-8951	2	Screw-HH
13	3296-12	2	Nut-Lock, NI
14	98-1822	1	Decal-Escutcheon
15	73-0240	1	Rod-Crank, Chute
16	73-0230	1	Gear-Crank, Chute
17	73-0310	1	Plate-Escutcheon
18	256-306	1	Bushing-Nyliner
20	73-3450	2	Spring
21	73-3710	1	Brake-Gear
22	114-8986	1	Decal-Operation



## Chute Assembly

<i>Ref.</i>	<i>Part Number</i>	<i>Qty.</i>	<i>Description</i>
1	73-0190	1	Chute-Deflector
2	3256-68	2	Washer-Flat
3	3296-29	2	Nut-Lock, NI
4	73-0260	1	Handle-Middle
5	94-4496	4	Screw-PPH
6	20-4320	2	Washer-Rubber
7	73-0180	1	Chute-Lower
8	3230-2	2	Bolt-CARR
9	114-9286	1	Decal-Danger
	73-0520	1	Loose Parts (Incl. Ref. #2, 3, 6, & 8, Page 4)(Incl. Ref. #12, & 13 Page 3) ●

● Not illustrated

**Notes:**



**Count on it.**