



## **Bagger TITAN Zero-Turn-Radius Riding Mower**

**Model No. 79326 - 290000001 and up.**

### **Parts Catalog**

#### **Ordering Replacement Parts**

To order replacement parts, please supply the part number, the quantity, and the description of each part desired.

#### **Understanding Reference Numbers**

Each Identified part in an illustration has a reference number. The reference number for a part also appears in the parts list, along with other information about the part.

This catalog uses two special reference number formats, one to indicate parts in a service assembly and another to indicate the quantity of a given part in an illustration.

#### **Service Assembly Reference Numbers**

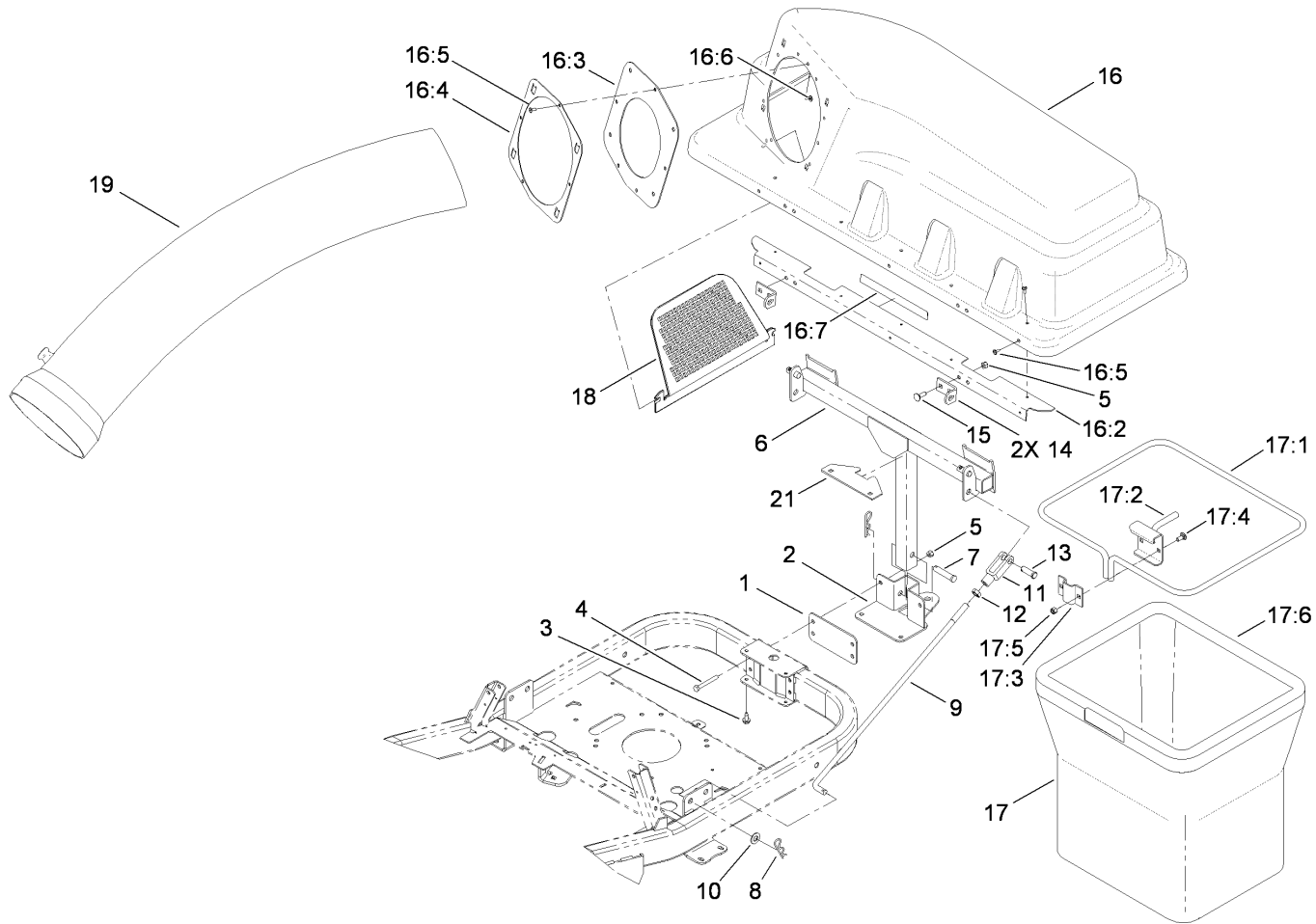
Parts in service assemblies have reference numbers in the form a:b. The a represents the reference number of the entire service assembly and the b represents a sequential number unique to each part within the service assembly.

For example, a wheel assembly might be identified by reference number 6, the tire by 6:1, the valve by 6:2, and the wheel by 6:3. When you order the assembly identified by reference number 6, you receive all parts identified by reference numbers 6:1, 6:2, and 6:3. However, you may also order any part individually. Reference numbers of this type appear in illustrations and in part lists.

#### **Reference Numbers Indicating Quantity**

In an illustration, if a reference number indicates more than one part, the reference number has the form nX y. The n represents the quantity of the part, the X is the multiplication symbol, and the y represents the reference number.

For example, in an illustration, the reference number 2X 37 means that two of the parts identified by reference number 37 are indicated.



**Bagger Assembly**

Ref	Part No.	Qty.	Description	Ref	Part No.	Qty.	Description
1	117-5355-03	1	Plate	17:2	112-4012-03	1	Hanger ASM
2	117-5352-03	1	Support-Bagger	17:3	114974-03	1	Clamp
3	32144-70	2	Screw-HWHTF	17:4	3230-1	2	Bolt-CARR
4	322-12	2	Screw-HH	17:5	3296-29	2	Nut-Lock, NI
5	3296-29	8	Nut-Lock, NI	17:6	110-6674	1	Bag
6	115-9696-03	1	Frame-Pivot	18	112-3993	1	Screen-Bagger
7	92-2739	1	Pin-Clevis	19	117-5379	1	Tube-Bagger
8	3290-355	5	Pin-Hair	21	117-5397-03	1	Plate-Spacer
9	115-2645	2	Rod-Bagger				
10	3256-26	2	Washer-Flat				
11	100-7338	2	Clevis				
12	3220-5	2	Nut-Jam				
13	104-3634	2	Pin-Clevis				
14	112-3987	2	Bracket-Pivot, Hopper				
15	3230-2	4	Bolt-CARR				
16	117-5370	1	Bagger Top ASM				
16:2	112-3989-03	1	Stiffener-Top, Bag				
16:3	112-4001	1	Gasket				
16:4	112-4000-03	1	Ring-Retainer				
16:5	114439	12	Rivet-Pop				
16:6	9202704	4	Washer				
16:7	109-6809	1	Decal-Caution Bagger				
17	112-3994	2	Bag ASM				
17:1	114972-03	1	Frame-Bag				