



Potentiometer Kit

for Workman MDE Utility Vehicle

Model No. 117-5085

Form No. 3362-633 Rev A

Installation Instructions

Installation

Loose Parts

Use the chart below to verify that all parts have been shipped.

Procedure	Description	Qty.	Use
1	No parts required	–	Prepare the vehicle.
2	No parts required	–	Remove the existing potentiometer.
3	Potentiometer assembly Screw (#8-32 x 1/2 inch) Lock nut (#8-32) Roll pin Jumper harness	1 2 2 1 1	Install the potentiometer.
4	No parts required	–	Calibrate the potentiometer.

1

Preparing the Vehicle

No Parts Required

Procedure

Park the machine on a level surface, set the parking brake, turn the ignition off, and remove the key.

2

Removing the Existing Potentiometer

No Parts Required

Procedure

1. Disconnect the spring connecting the accelerator pedal to the pedal box assembly (Figure 1).

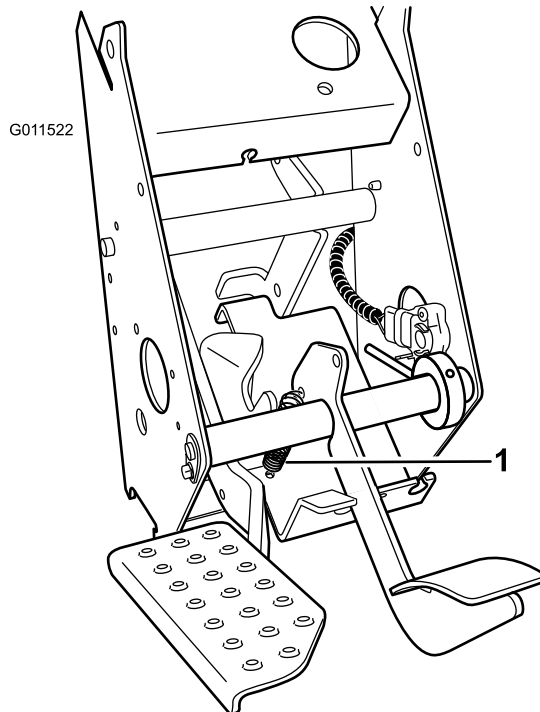


Figure 1

1. Spring

2. Remove the bolt retaining the pedal assembly pivot rod (Figure 2). Remove the pedal pivot rod.

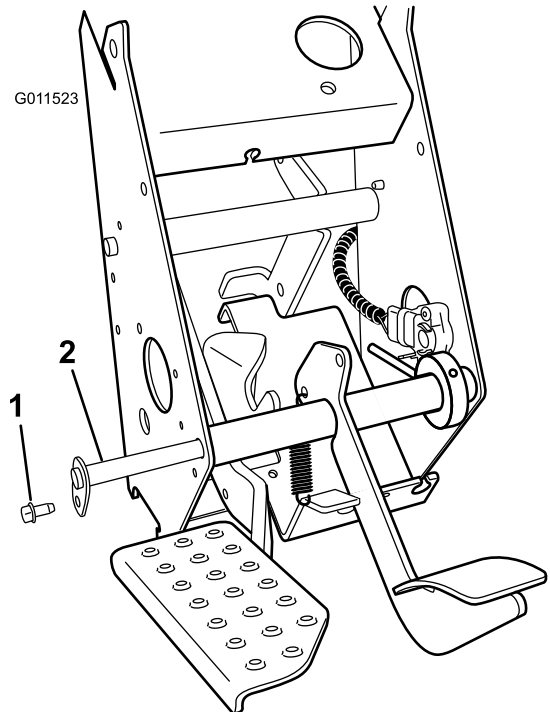


Figure 2

1. Bolt
2. Pivot rod

3. Remove the pedal assembly from the pedal box (Figure 3).

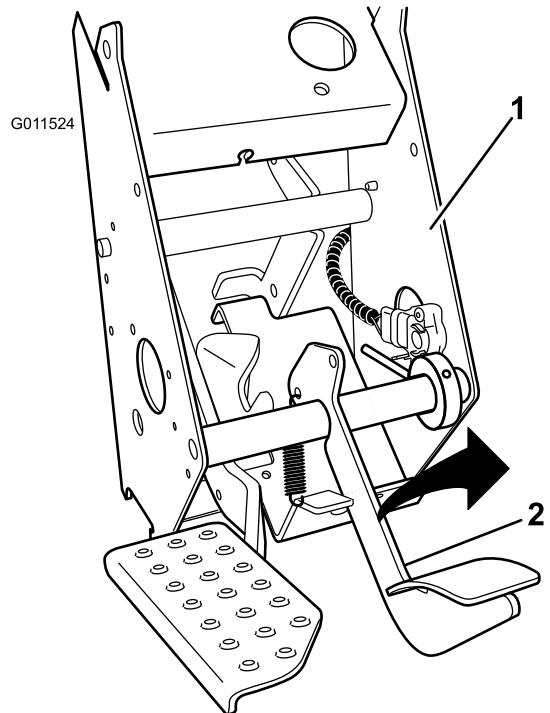


Figure 3

1. Pedal box
2. Pedal assembly

4. Disconnect the existing potentiometer from the main vehicle harness and drill out the rivets securing the potentiometer to the pedal box assembly (Figure 4).

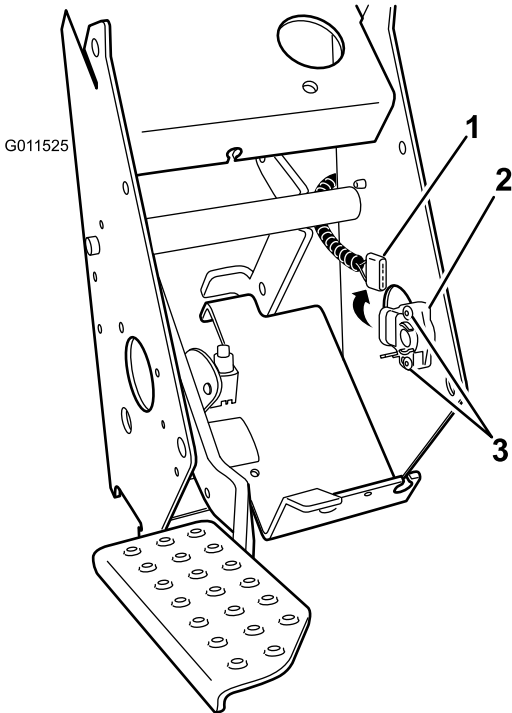


Figure 4

1. Main vehicle harness
2. Existing potentiometer
3. Rivets

3

Installing the Potentiometer

Parts needed for this procedure:

1	Potentiometer assembly
2	Screw (#8-32 x 1/2 inch)
2	Lock nut (#8-32)
1	Roll pin
1	Jumper harness

Procedure

1. Install the new potentiometer assembly to the pedal box assembly (Figure 5). Use two screws (#8-32 x 1/2 inch) and two lock nuts (#8-32) to secure the assembly.

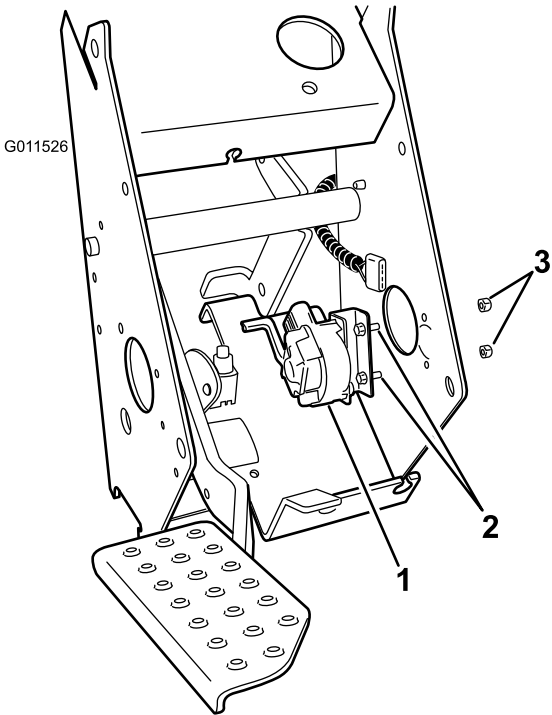


Figure 5

1. Potentiometer assembly
2. Screw (#8-32 x 1/2 inch)
3. Lock nut (#8-32)

2. Loosen the set screws on the collar and slide the collar assembly off the pedal assembly (Figure 6).

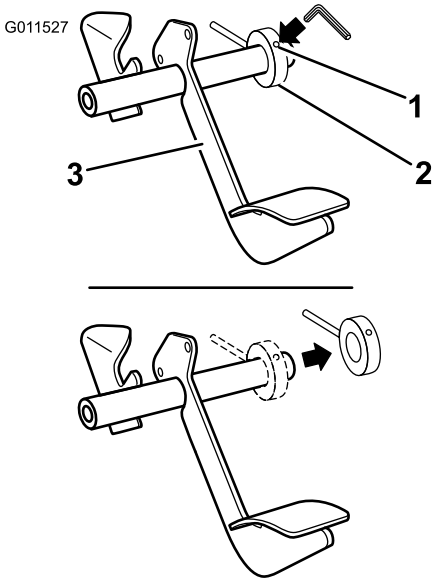


Figure 6

1. Set screws
2. Collar
3. Pedal assembly

3. Remove the existing roll pin from the collar. Install the new, longer roll pin in its place.

4. Install the collar assembly onto the pedal assembly and slide it toward the pedal arm (Figure 7). Let the collar hang at this time.

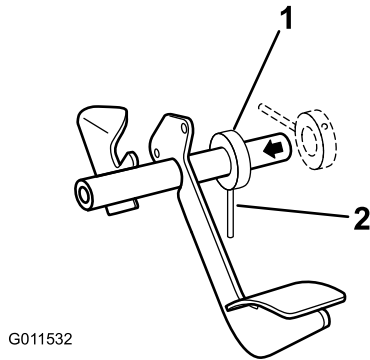


Figure 7

1. Collar
2. Long roll pin

5. Install the pedal assembly into the pedal box (Figure 8). Secure the pedal assembly with the pedal pivot rod and bolt.

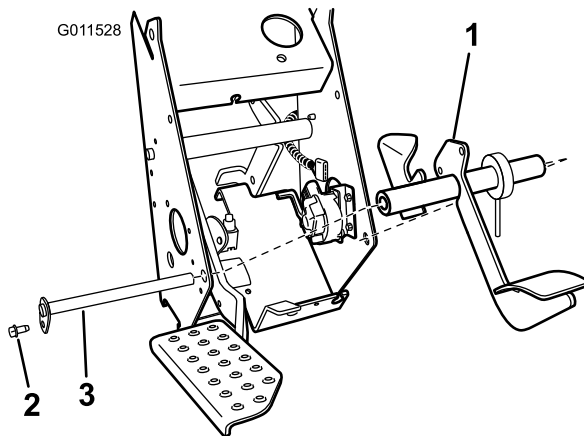


Figure 8

1. Pedal assembly with collar
2. Bolt
3. Pivot rod

6. Align the collar with the new potentiometer lever (Figure 9). Rotate the collar until the roll pin just makes contact with the potentiometer lever but **does not** displace it. Tighten the set screws to lock the arm in position.

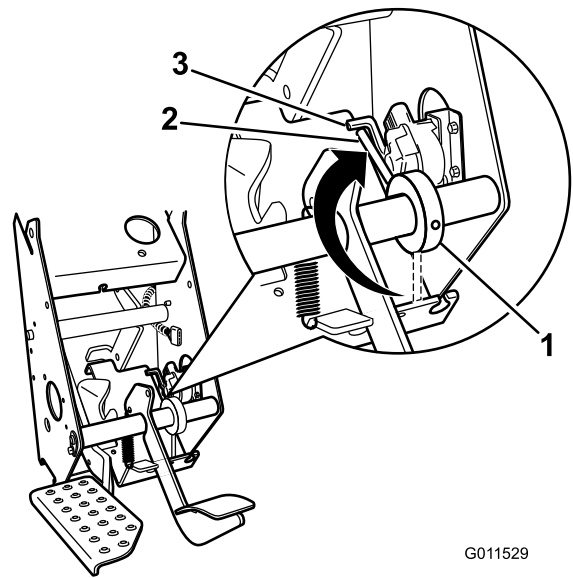


Figure 9

1. Collar
2. Roll pin
3. Potentiometer lever

7. Install the spring to the accelerator pedal assembly to the pedal box (Figure 10).

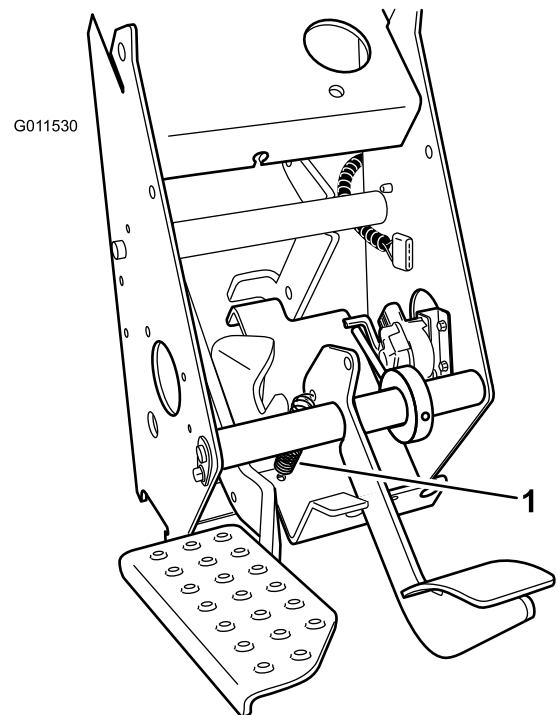


Figure 10

1. Spring

8. Install the jumper harness from the existing vehicle wire harness to the new potentiometer assembly (Figure 11).

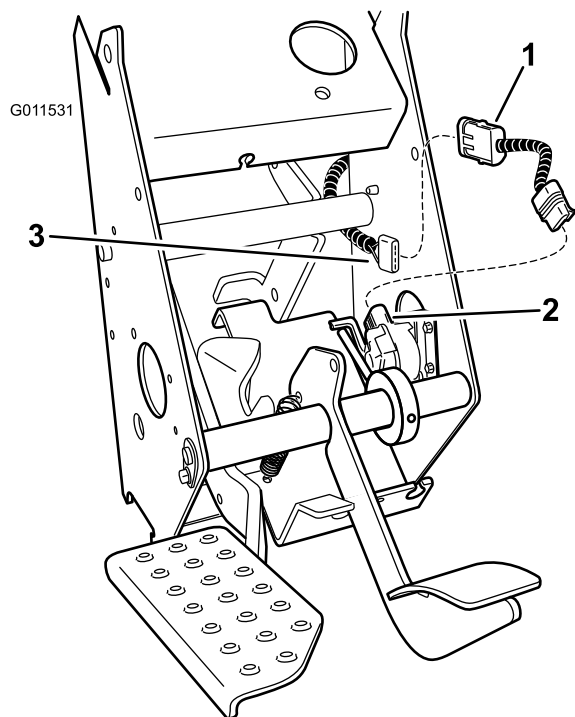


Figure 11

- | | |
|-------------------|-------------------------|
| 1. Jumper harness | 3. Main vehicle harness |
| 2. Potentiometer | |

4

Calibrating the Potentiometer

No Parts Required

Procedure

The installation of a new potentiometer requires it to be calibrated; see the vehicle *Service Manual* perform this procedure and complete the installation of this kit.

Notes:

Notes:



Count on it.