



## Pro Force Debris Blower

Model No. 44538 - 290000001 and up.

### Parts Catalog

---

#### **Ordering Replacement Parts**

To order replacement parts, please supply the part number, the quantity, and the description of each part desired.

#### **Understanding Reference Numbers**

Each identified part in an illustration has a reference number. The reference number for a part also appears in the parts list, along with other information about the part.

This catalog uses two special reference number formats, one to indicate parts in a service assembly and another to indicate the quantity of a given part in an illustration.

#### **Service Assembly Reference Numbers**

Parts in service assemblies have reference numbers in the form a:b. The a represents the reference number of the entire service assembly and the b represents a sequential number unique to each part within the service assembly.

For example, a wheel assembly might be identified by reference number 6, the tire by 6:1, the valve by 6:2, and the wheel by 6:3. When you order the assembly identified by reference number 6, you receive all parts identified by reference numbers 6:1, 6:2, and 6:3. However, you may also order any part individually. Reference numbers of this type appear in illustrations and in part lists.

#### **Reference Numbers Indicating Quantity**

In an illustration, if a reference number indicates more than one part, the reference number has the form nX y. The n represents the quantity of the part, the X is the multiplication symbol, and the y represents the reference number.

For example, in an illustration, the reference number 2X 37 means that two of the parts identified by reference number 37 are indicated.

# Contents

Description	Page	Description	Page
Shaft and Rotor Assembly	..... 3	Head, Valve and Breather Assembly Kohler CH740-3122	..... 13
Turbine Assembly	..... 4	Ignition and Electrical Assembly Kohler CH740-3122	..... 15
Hitch, Trailer, Fuel Tank, Hub and Wheel Assembly	..... 5	Blower Housing and Baffle Assembly Kohler CH740-3122	..... 16
Hub Assembly No. 80-6570	..... 6	Starting System Assembly Kohler CH740-3122	..... 17
Nozzle, Belt and Guard Assembly	..... 7	Fuel System Assembly Kohler CH740-3122	..... 18
Clutch, Battery and Electrical Component Assembly	..... 8	Engine Control Assembly Kohler CH740-3122	..... 19
Engine and Muffler Assembly	..... 9	Air Intake and Filtration Assembly Kohler CH740-3122	..... 20
Crankshaft Assembly Kohler CH740-3122	..... 10	Exhaust Assembly Kohler CH740-3122	..... 22
Crankcase Assembly Kohler CH740-3122	..... 11	Decal and Gasket Set Assembly Kohler CH740-3122	..... 23
Oil Pan and Lubrication Assembly Kohler CH740-3122	..... 12		

## Part Description Abbreviations

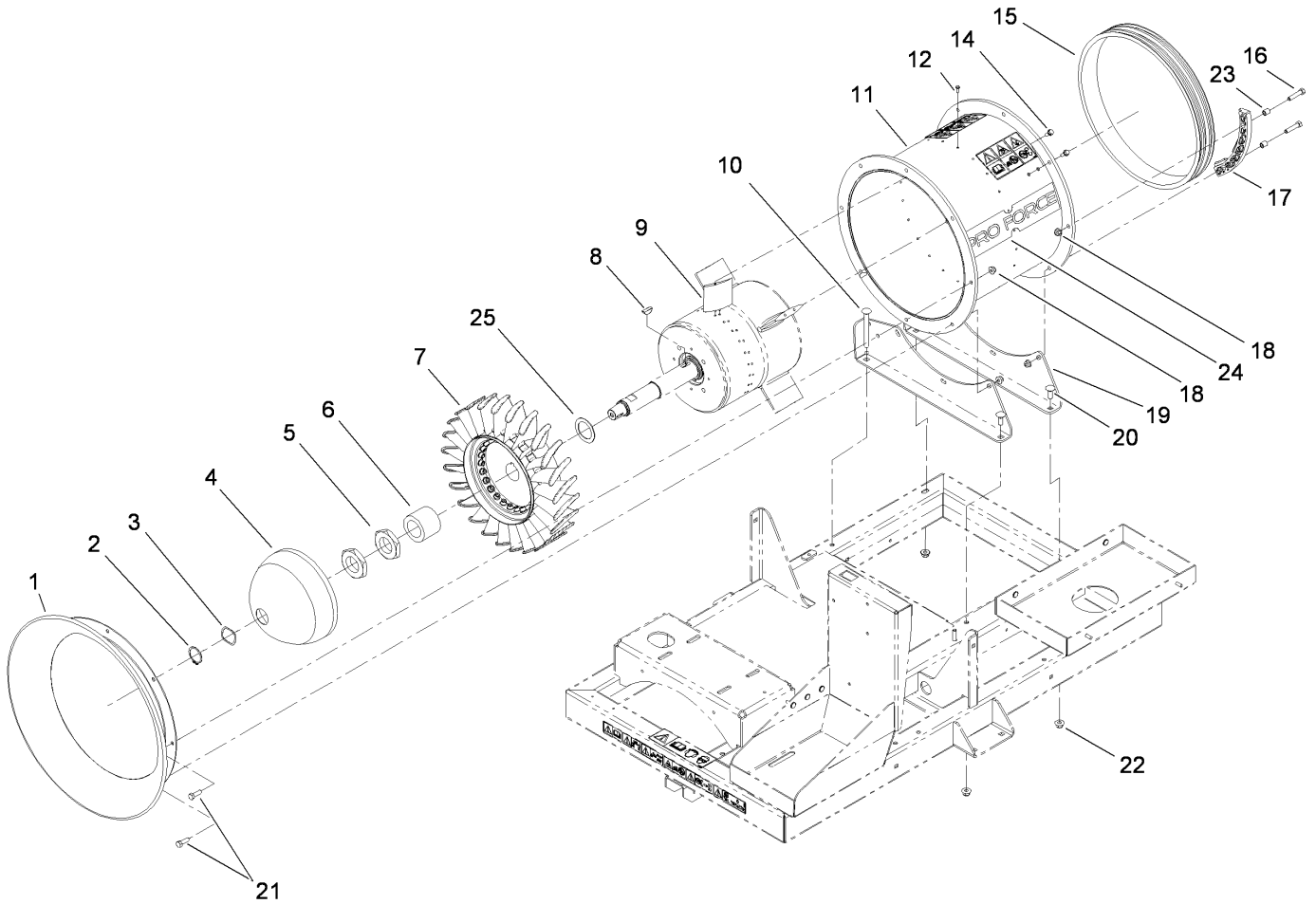
Part descriptions in this catalog may include the following abbreviations.

AR. .... as required	HWHTF. .... hex washer head thread forming
ASM. .... assembly	HYD. .... hydraulic
BBC. .... blade brake clutch	LH. .... left hand
CARR. .... carriage	NI. .... nylon insert
CCW. .... counter clock wise	NPTF. .... national pipe thread fine
CW. .... clockwise	PFH. .... phillips flat head
DEG. .... degrees	PPH. .... phillips pan head
ECM. .... electronic control module	PPHTF. .... phillips pan head thread forming
EXT. .... external	PRH. .... phillips round head
FH. .... flat head	PTH. .... phillips truss head
GA. .... gauge	PTO. .... power-take-off
HD. .... heavy-duty	RH. .... right hand
HF. .... hex flange	ROPS. .... roll-over protection system
HH. .... hex head	SFH. .... slotted fillister head
HHF. .... hex head flange	SHH. .... slotted hex head
HHFTF. .... hex head flange thread forming	SHWH. .... slotted hex washer head
HJ. .... hex jam	SPH. .... slotted pan head
HLH. .... hex lag head	SQH. .... square head
HOC. .... height-of-cut	SRH. .... slotted round head
HSBH. .... hex socket button head	STD. .... standard
HSFH. .... hex socket flat head	TAP. .... self tapping
HSH. .... hex socket head	TTH. .... torx truss head
HWH. .... hex washer head	

## Footnotes

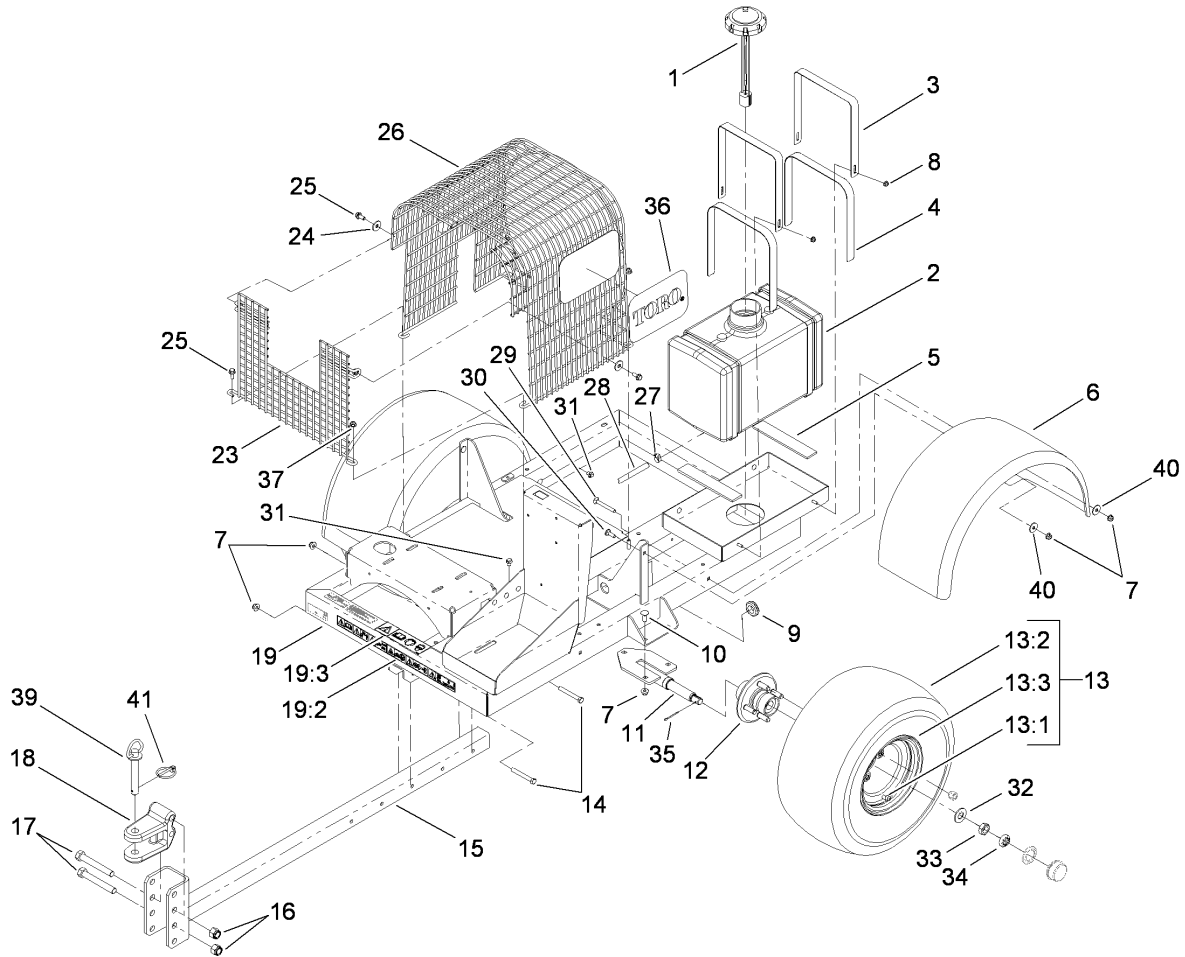
- ❶ Not illustrated
- ❷ Not serviced separately
- ❸ Obtain parts from [www.kohlerplus.com](http://www.kohlerplus.com)





## Turbine Assembly

Ref	Part No.	Qty.	Description
1	112-6873	1	Bell-Inlet
2	112-1952	1	Clip-EXT, Dome
3	93-4632	3	Washer-Wavey
4	112-1900	1	Cap-Front
5	112-1899	2	Nut
6	114-2164	1	Spacer
7	112-6889	1	Rotor ASM
8	3257-42	1	Key-Woodruff
9	112-1871	24	Vane-Stator
10	3231-24	2	Screw-CARR
11	115-5128	1	Housing ASM
12	112-6831	24	Screw-HHF
14	112-6897	8	Screw-HF
15	112-1874	1	Pulley-Nozzle
16	322-7	6	Screw-HH
17	114-9868	4	Guide-Nozzle
18	104-8300	14	Nut-Flange, NI
19	112-6851-01	2	Mount-Fan
20	3231-2	2	Screw-CARR
21	322-5	8	Screw-HH
22	104-8301	4	Nut-Flange, NI
23	93-6859	8	Spacer
24	115-5102	2	Decal-Proforce
25	115-5131	1	Washer

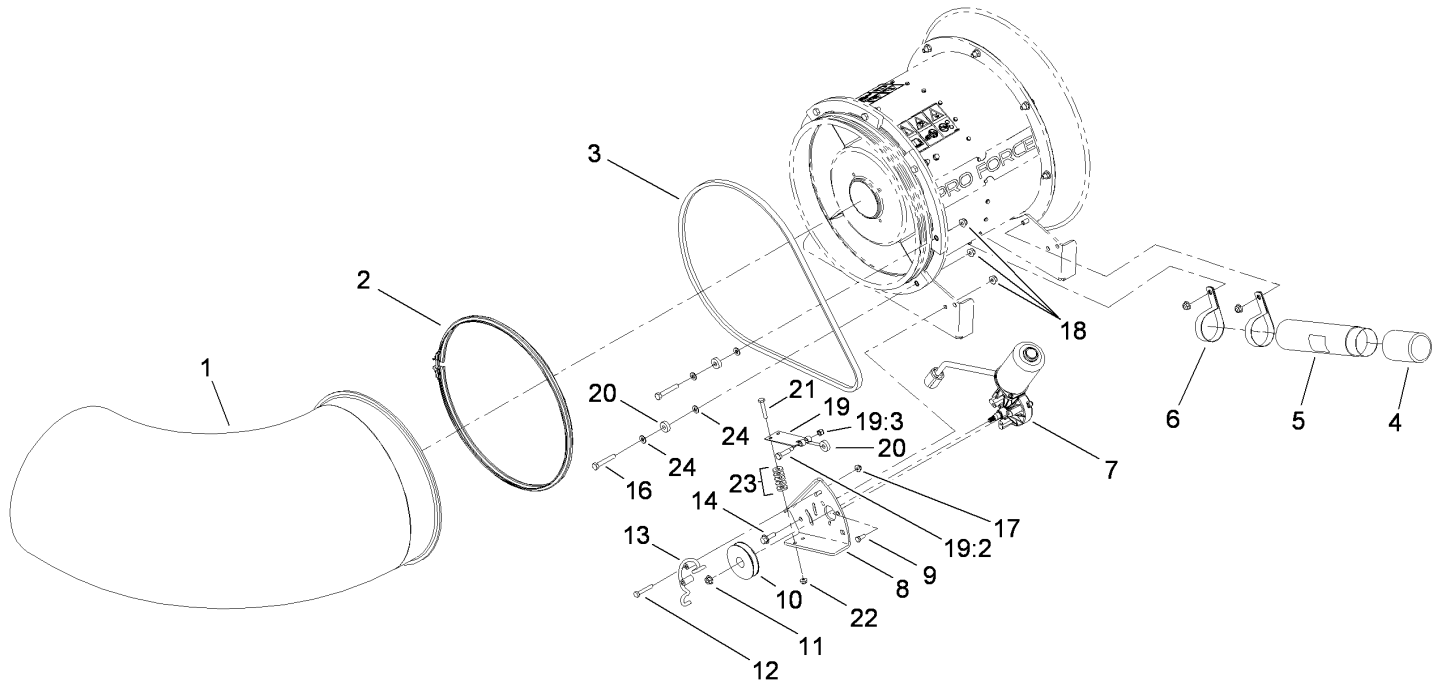



## Hitch, Trailer, Fuel Tank, Hub and Wheel Assembly

Ref	Part No.	Qty.	Description
1	100-8386	1	Fuel Cap And Guage ASM
2	100-8294	1	Tank-Fuel
3	112-6832-03	2	Strap-Tank
4	108-3378	2	Strap-Strip, Felt
5	100-8524	2	Strip-Foam
6	112-6852	2	Fender
7	104-8301	8	Nut-Flange, NI
8	104-7201	2	Nut-HF
9	1-543286	1	Grommet
10	3231-2	6	Screw-CARR
11	112-6881-01	2	Axle ASM
12	80-6570	2	Hub ASM
13	98-8691	2	Wheel ASM
13:1	232-27	1	Stem-Valve
13:2	99-4506	1	Tire
13:3	99-4507	1	Rim
14	323-14	2	Screw-HH
15	112-6942-01	1	Hitch ASM
16	3296-53	2	Nut-Lock, NI
17	327-23	2	Screw-HH
18	47-3550-01	1	Clevis-Hitch
19	115-5107	1	Frame ASM
19:2	115-5105	1	Decal-Warning
19:3	115-5113	1	Decal-Protection, Eye And Ear

Ref	Part No.	Qty.	Description
23	114-2214	1	Grill-Side
24	52-2861	2	Washer
25	112-6913	4	Screw-Hfl
26	112-6876	1	Top Grill ASM
27	2412-108	2	Clamp-Worm
28	112-6763	1	Hose-Fuel
29	3230-9	4	Screw-CARR
30	3230-2	4	Bolt-CARR
31	32180-030	4	Clip-Harness
32	93-0309	2	Washer-Tab
33	3220-7	2	Nut-Jam
34	93-0307	2	Nut-Lock, Retainer
35	3272-13	2	Pin-Cotter
36	92-1242	2	Decal
37	104-8300	10	Nut-Flange, NI
39	13-6200	1	Pin-Hitch, Pointed
40	3256-82	8	Washer-Flat
41	92-1298	1	Pin-Lynch

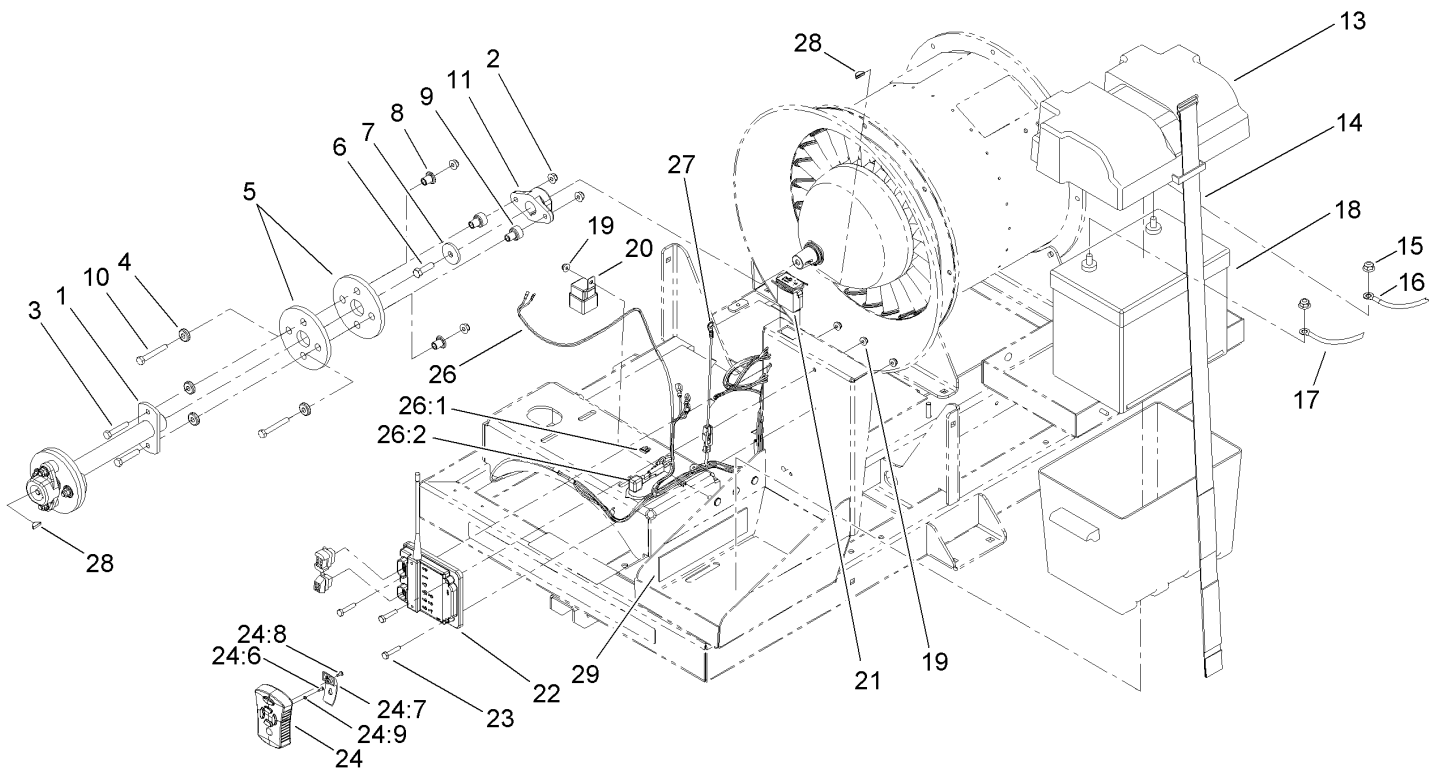




## Nozzle, Belt and Guard Assembly

Ref	Part No.	Qty.	Description
1	112-1949	1	Nozzle-14 Inch
2	112-6899	1	Clamp-Nozzle
3	112-1853	1	Belt-V
4	104-7048	1	Cap-Housing
5	104-7050	1	Tube-Manual
6	2412-133	2	R-Clamp
7	115-5141	1	Motor Service ASM
8	115-5149-01	1	Bracket-Motor
9	33113-016	3	Screw-HH
10	115-5147	1	Pulley
11	98-0668	1	Nut
12	321-37	2	Screw-HH
13	112-6924	1	Guard-Belt, Drive
14	3234-29	2	Screw-HHF
16	322-10	2	Screw-HH
17	104-7201	2	Nut-HF
18	104-8300	4	Nut-Flange, NI
19	110-9650	1	Leaf Spring ASM
19:2	36-2250	1	Bolt-Shoulder
19:3	3296-42	1	Nut-Lock, NI
20	251-259	3	Bearing-Ball
21	321-9	2	Screw-HH
22	104-7201	2	Nut-HF
23	88-7200	10	Washer-Flat

Ref	Part No.	Qty.	Description
24	3256-74	4	Washer-Flat

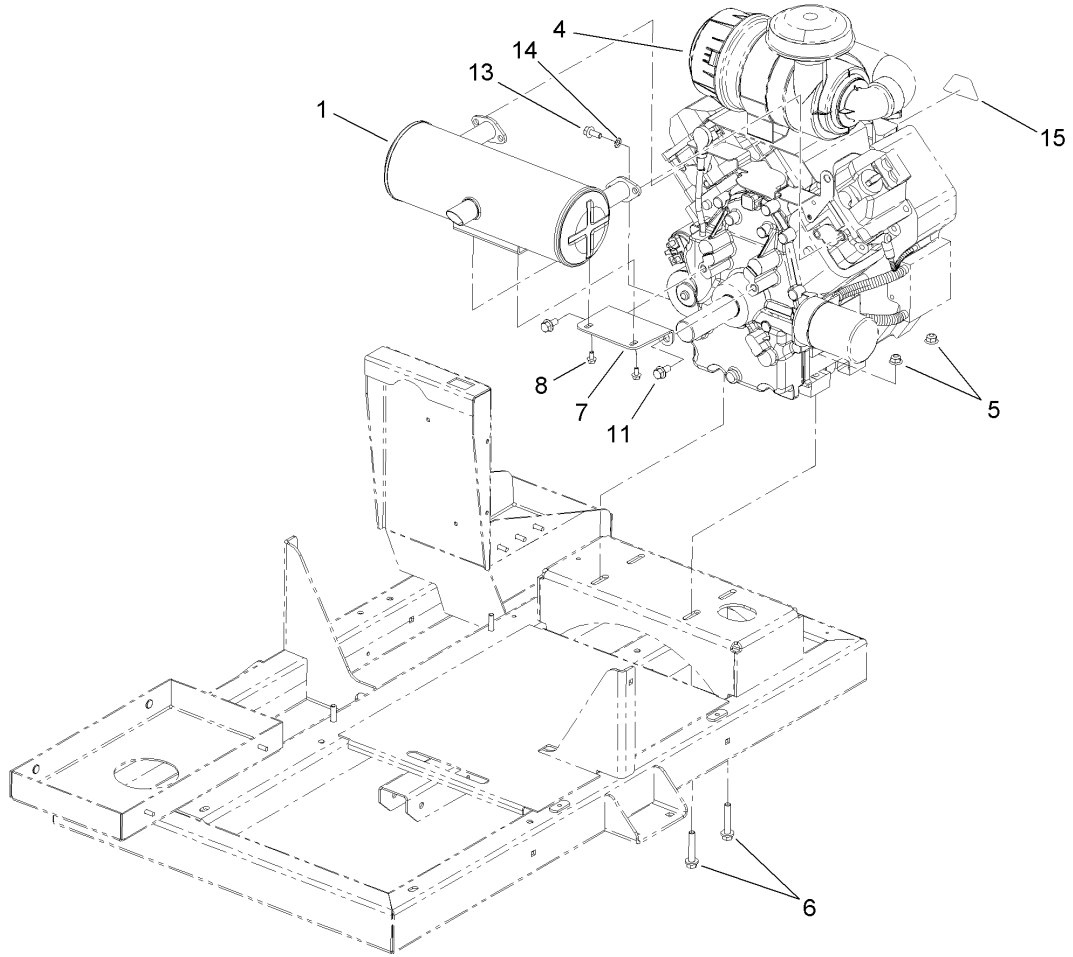


## Clutch, Battery and Electrical Component Assembly

Ref	Part No.	Qty.	Description
1	115-5124-03	1	Drive Shaft ASM
2	104-8300	8	Nut-Flange, NI
3	322-39	4	Screw-HH
4	115-5118	8	Washer
5	115-5129	4	Coupling-Rubber
6	323-7	2	Screw-HH
7	114-2120	2	Washer
8	115-5120	4	Spacer-Coupling, Rubber
9	115-5119	4	Spacer-Coupling, Rubber
10	322-32	4	Screw-HH
11	114-2122	2	Hub-Engine
13	93-7595	1	Battery Box ASM
14	115-5136	1	Strap-Battery
15	104-8301	2	Nut-Flange, NI
16	114-9714	1	Cable-Battery, Positive
17	114-9715	1	Cable-Battery, Negative
18	108-1260	1	Battery-Dry
19	104-7201	6	Nut-HF
20	99-7430	2	Relay
21	1-513374	1	Meter-Hour
22	114-3358	1	Controller ASM (Twm0433Rx)
23	321-8	3	Screw-HH
24	112-6930	1	Transmitter-Remote
24:6	112-6939	6	Screw

Ref	Part No.	Qty.	Description
24:7	102-5934	1	Clip-Belt, Remote
24:8	112-6941	1	Screw-Ph
24:9	115-5143	6	O-Ring
26	115-8113	1	Harness-Wire, Blower
26:1	109355	1	Fuse-15 Amp
26:2	100-4918	1	Diode
27	108-9455	1	Harness-Wire, Fusible Link
28	3257-5	2	Key-Woodruff
29	104-7102	2	Pad-Battery



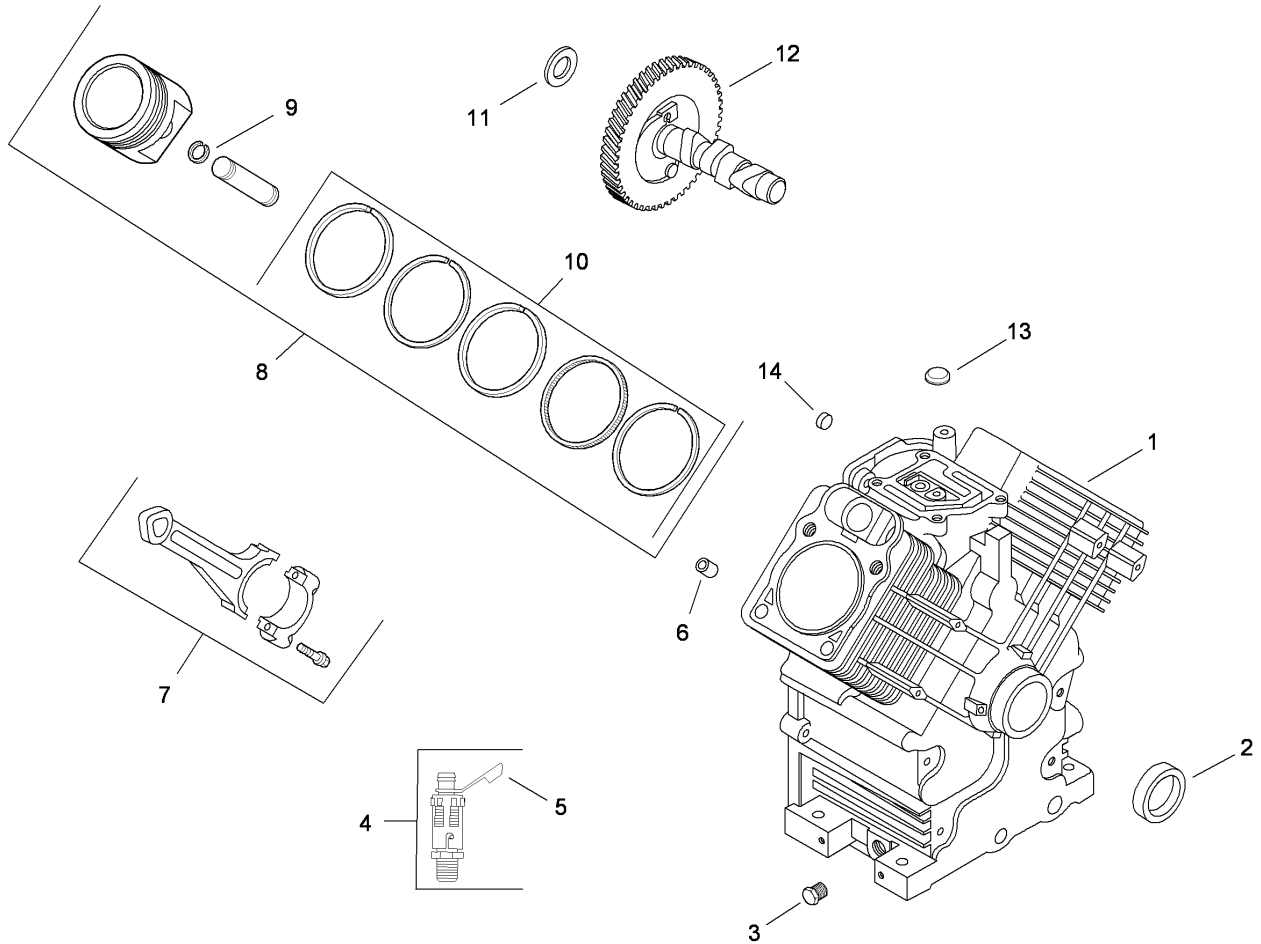


## Engine and Muffler Assembly

Ref	Part No.	Qty.	Description
1	112-6862	1	Muffler-Kohler
4	112-6858	1	Engine-Kohler
5	104-8301	4	Nut-Flange, NI
6	66-9302	4	Screw-HHF, Whiz
7	112-6891-03	1	Bracket-Muffler
8	33103-012	2	Screw-HHF
11	110-1718	2	Screw-HHF
13	33104-020	1	Screw-HHF
14	3255-8	1	Washer-Lock
15	115-5150	1	Decal-Key

--	--	--	--	--

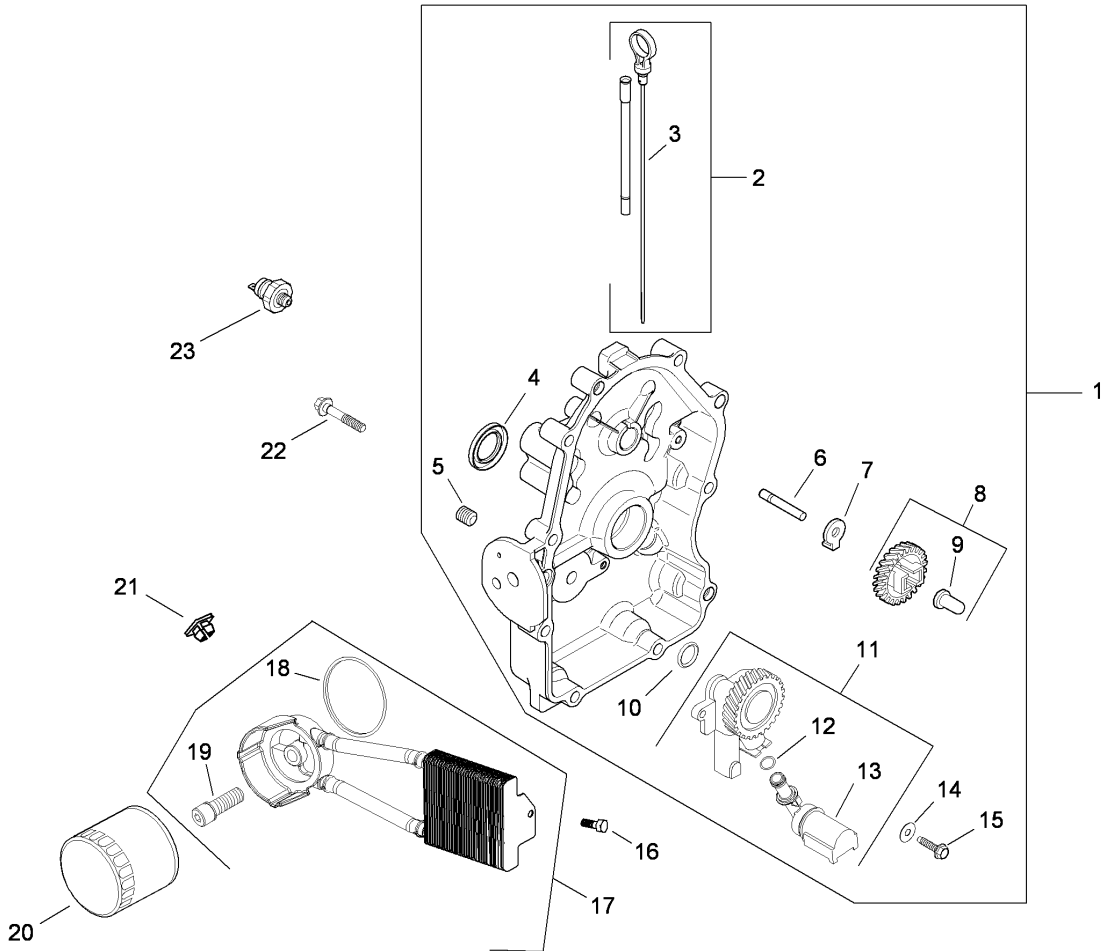




## Crankcase Assembly Kohler CH740-3122

Ref	Part No.	Qty.	Description
2 1		1	Crankcase (Use: Short Block)
2	24 032 19-S	1	Seal-Oil (Helix Lip)
3	52 139 02-S	1	Plug-Pipe Head, 3/8
4	25 755 14-S	1	Oil Drain Valve Kit
5	25 173 14-S	1	Cap-Valve, Oil Drain
6	24 380 16-S	6	Pin-Locating
7	24 067 24-S	2	Rod-Connecting (STD)
7	24 067 25-S	2	Rod-Connecting (.25)
8	25 874 01-S	2	Piston W/Ring Set (STD)
8	24 874 27-S	2	Piston W/Ring Set (.08)
8	24 874 28-S	2	Piston W/Ring Set (.25)
8	24 874 29-S	2	Piston W/Ring Set (.50)
9	24 018 01-S	4	Retainer-Pin, Piston
10	24 108 14-S	2	Ring Set (STD)
10	24 108 15-S	2	Ring Set (.08)
10	24 108 16-S	2	Ring Set (.25)
10	24 108 17-S	2	Ring Set (.50)
11	12 422 07-S	1	Shim-Camshaft (White .028)
11	12 422 08-S	1	Shim-Camshaft (Blue .03)
11	12 422 09-S	1	Shim-Camshaft (Red .032)
11	12 422 10-S	1	Shim-Camshaft (Yellow .034)
11	12 422 11-S	1	Shim-Camshaft (Green .036)
11	12 422 12-S	1	Shim-Camshaft (Gray .038)
11	12 422 13-S	1	Shim-Camshaft (Black .04)

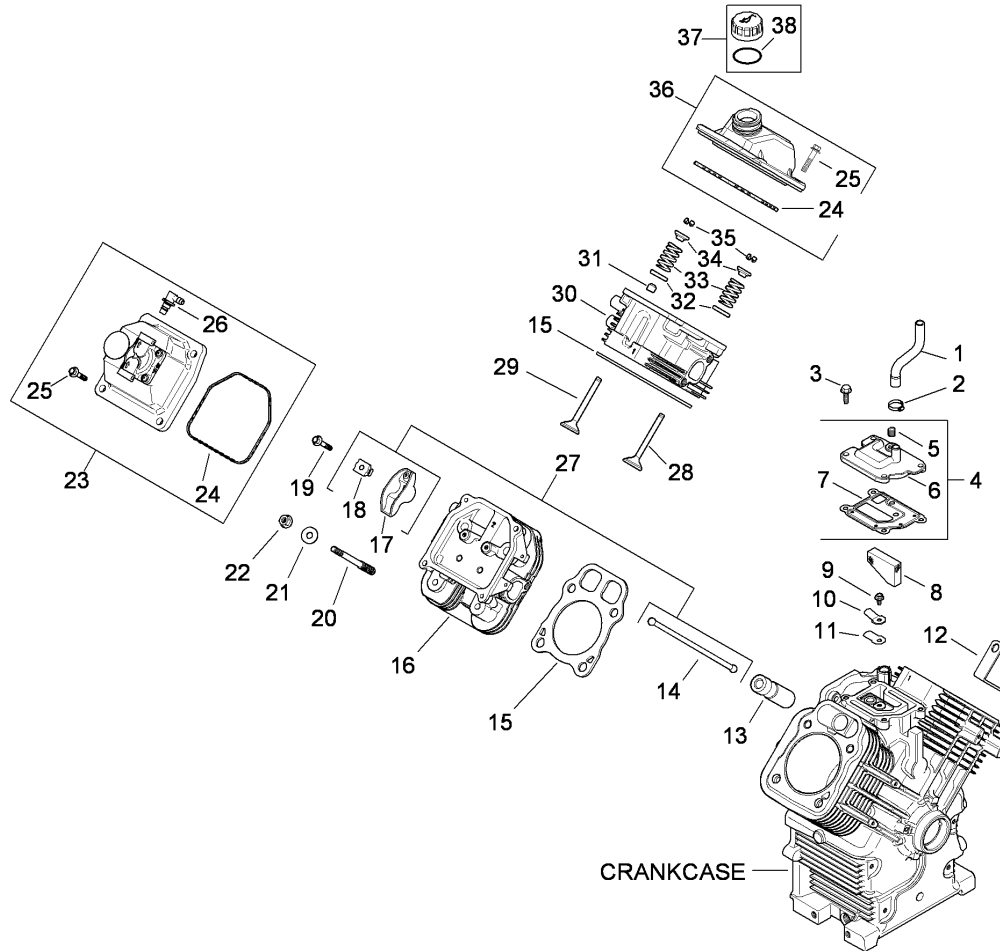
Ref	Part No.	Qty.	Description
12	24 012 18-S	1	Camshaft Kit (Includes 25 357 14-S)
13	25 139 28-S	1	Plug, Cup
14	52 139 09-S	1	Plug-Cup
15	25 357 14-S	1	Lubricant-Camshaft



## Oil Pan and Lubrication Assembly Kohler CH740-3122

Ref	Part No.	Qty.	Description
❶	24 009 167-S	1	Closure Plate And Bearing ASM (Includes 2-15)
❷	24 755 121-S	1	Dipstick And Dipstick Tube ASM (Includes 3)
❸	24 038 10-S	1	Dipstick
❹	25 032 06-S	1	Seal-Oil
❺	25 139 60-S	1	Plug-Pipe, Countersunk (1/8)
❻	12 144 02-S	1	Shaft-Gear, Governor
❼	24 448 02-S	1	Tab-Locking
❽	24 043 12-S	1	Governor Gear W/Pin Kit
❾	12 380 01-S	1	Pin-Regulating, Governor
❿	24 153 08-S	1	O-Ring
⓫	24 393 51-S	1	Oil Pump ASM
⓬	24 153 01-S	1	O-Ring
⓭	24 381 04-S	1	Tube-Pick Up, Oil
⓮	M-631005-S	2	Washer-Flat (6 Mm)
⓯	M-645025-S	2	Screw-Flange, Thread Forming (M6X1.0X25)
⓰	25 086 49-S	2	Screw-Tapping
⓱	54 755 21-S	1	Oil Cooler Kit (Metal)
⓲	24 153 21-S	1	O-Ring
⓳	24 136 05-S	1	Nipple-Filter, Oil
⓴	12 050 01-S	1	Filter-Oil
⓵	25 100 37-S	2	Nut-Plastic (Black)
⓶	24 086 17-S	10	Screw-Flange (M8X1.25X45)

Ref	Part No.	Qty.	Description
❷	24 099 03-S	1	Switch-Pressure

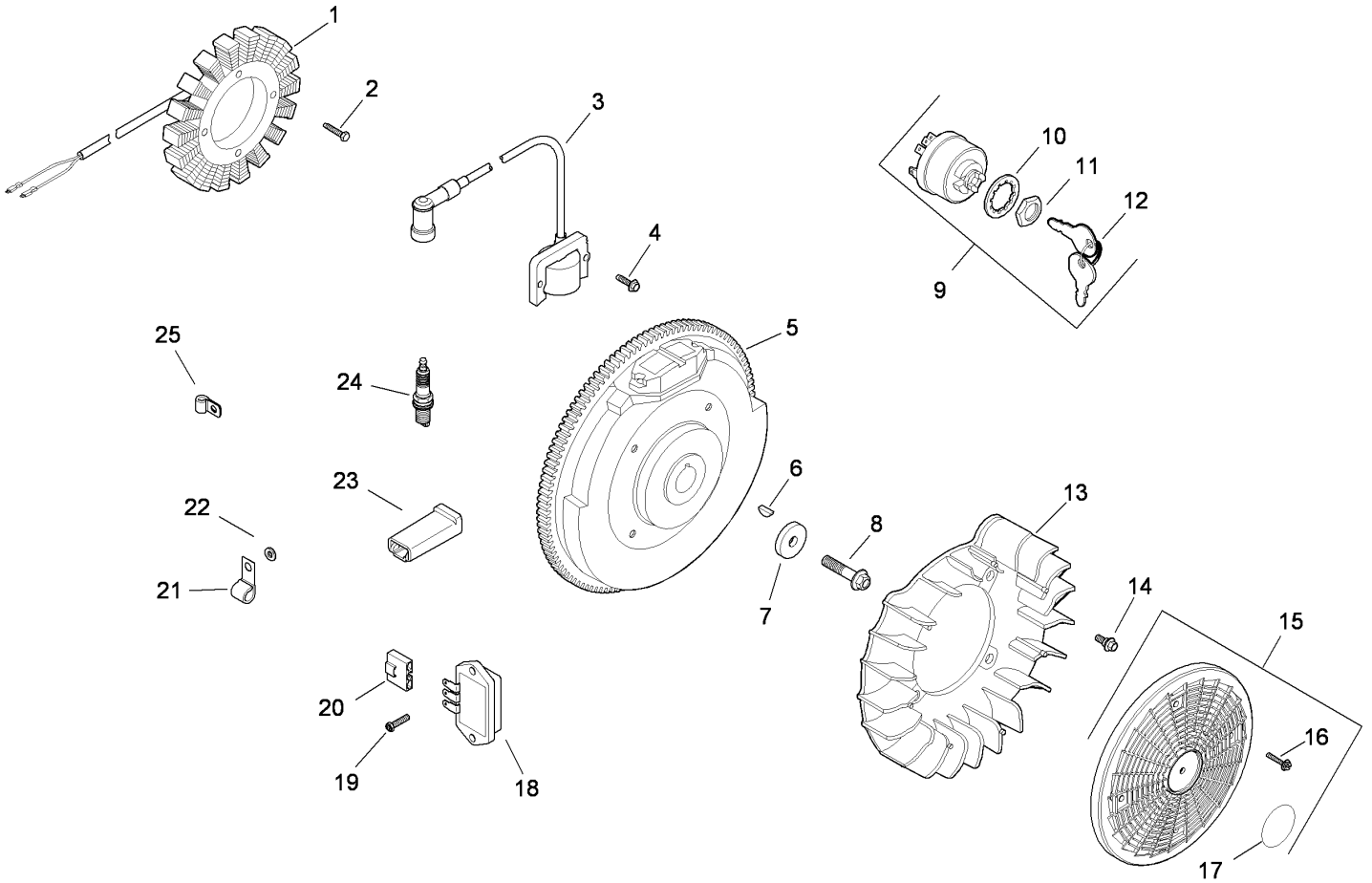


## Head, Valve and Breather Assembly Kohler CH740-3122

Ref	Part No.	Qty.	Description
❶	24 326 89-S	1	Hose-Breather
❷	25 237 14-S	1	Clamp-Hose, Spring (1/2)
❸	M-645020-S	6	Screw-HHFTF (M6X1.0X20)
❹	24 033 01-S	1	Breather ASM (Includes 5-7)
❺	25 139 60-S	1	Plug-Pipe, Countersunk (1/8)
❻	24 096 86-S	1	Cover-Breather
❼	24 041 51-S	1	Gasket-Breather
❽	24 050 11-S	1	Filter-Breather
❾	M-545010-S	1	Screw-HHFTF (M5X.8X10)
❿	66 018 04-S	1	Retainer-Reed
⓫	24 402 03-S	1	Reed-Breather
⓬	25 445 01-S	1	Strap-Lifting
⓭	25 351 04-S	4	Hydraulic Valve Lifter Kit (Includes 25 357 14-S)
⓮	24 411 05-S	4	Rod-Push
⓯	24 841 03-S	2	Cylinder Head Gasket Kit
⓰	24 318 114-S	1	Cylinder Head No. 2 Kit (Includes 25 072 04-S)
⓱	25 186 01-S	4	Arm-Rocker
⓲	24 599 02-S	4	Pivot-Rocker Arm
⓳	M-640034-S	4	Screw-Flange (M6X1.0X34)
⓴	24 072 09-S	8	Stud (M8X1.25Xm10X1.5X105Mm)
⓵	24 468 16-S	8	Washer-Flat (8.6 Mm)
⓶	24 100 10-S	8	Nut-Flange (M8X1.25)

Ref	Part No.	Qty.	Description
⓷	24 559 11-S	1	Valve Cover Kit-Fuel Pump (Includes 24-26)
⓸	24 153 30-S	2	O-Ring
⓹	M-651030-S	8	Screw-Flange (M6X1.0X30)
⓺	25 294 11-S	2	90 DEG Fitting Kit
⓻	24 755 66-S	1	Valve Train Kit
⓼	24 017 01-S	2	Valve-Intake (STD)
⓽	24 017 02-S	2	Valve-Intake (.25)
⓾	24 016 01-S	2	Valve-Exhaust (STD)
⓿	24 016 02-S	2	Valve-Exhaust (.25)
⓿	24 318 106-S	1	Cylinder Head No.1 ASM
⓫	66 032 05-S	2	Seal-Stem, Valve
⓫	235011-S	4	Retainer-Spring
⓫	24 089 02-S	4	Spring-Valve
⓫	12 173 01-S	4	Cap-Spring, Valve
⓫	12 755 03-S	4	Retainer Kit
⓫	24 755 140-S	1	Oil Fill Rocker Cover Kit (Includes 24-25)
⓫	24 755 46-S	1	Oil Fill Cap Kit (Yellow) (Includes 38)
⓫	25 153 02-S	1	O-Ring
⓫	M-645016-S	2	Screw-Flange, Thread Forming (M6X1.0X16)
⓫	24 755 147-S	2	Cylinder Head Hardware Kit (Includes Items 14, 18-20, 28-29, 31-35)

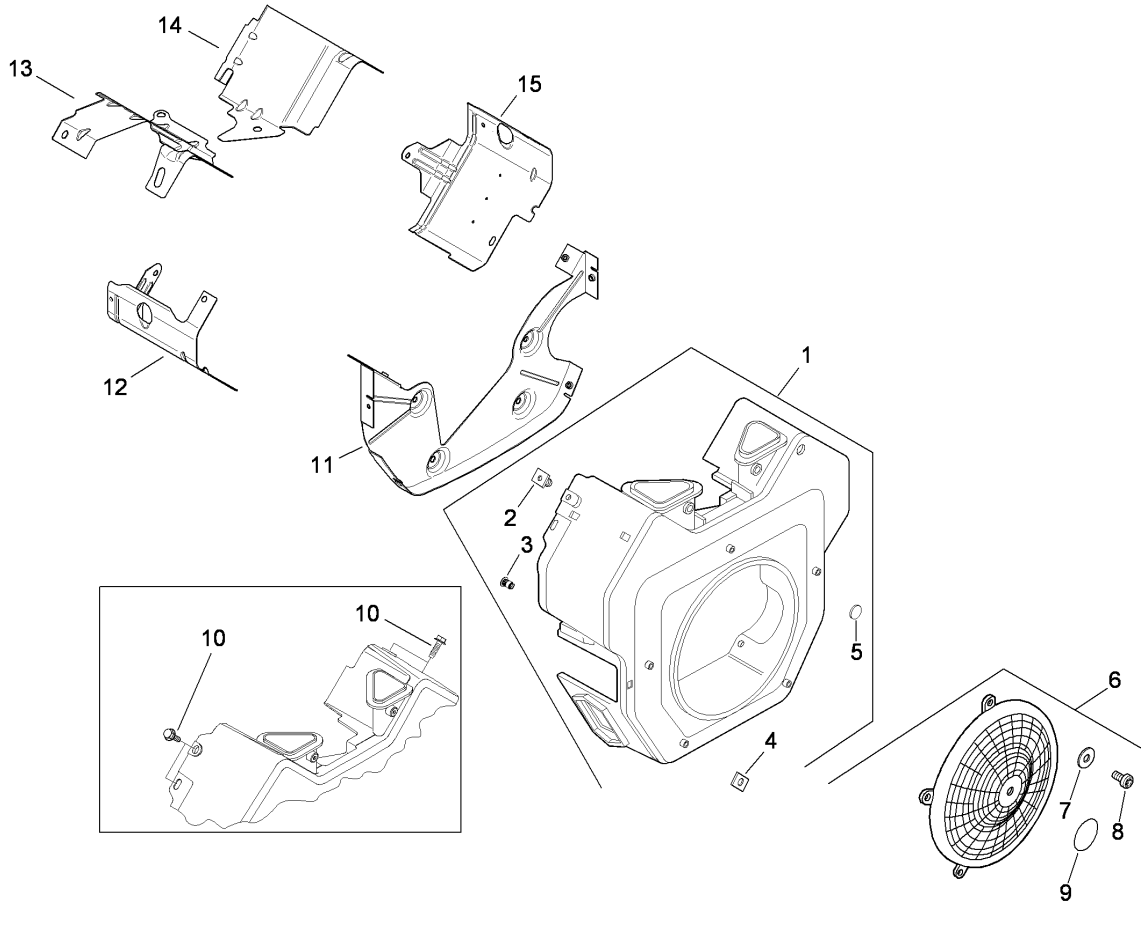




## Ignition and Electrical Assembly Kohler CH740-3122

Ref	Part No.	Qty.	Description
1	237878-S	1	15 Amp Stator Kit (Includes 25 452 01-S)
2	M-548025-S	2	Screw-Thread Forming (M5X0.8X25)
3	24 584 52-S	2	Module Spark Adv (D S A I) ASM
4	M-545020-S	4	Screw-Flange, Thread Forming (M5X.8X20)
5	24 025 58-S	1	Flywheel ASM (L W)
6	X-42-15-S	1	Key (3/16 X 5/8)
7	12 468 03-S	1	Washer-Flat (13/32)
8	12 086 14-S	1	Screw-Flange (M10X1.5X45)
9	25 099 04-S	1	Switch -Key
10	48 468 02-S	1	Washer-Internal Tooth
11	48 100 01-S	1	Nut-Switch, Key
12	48 340 01-S	1	Key (Set Of 2)
13	24 157 11-S	1	Fan
14	25 086 47-S	4	Bolt-Shoulder (M6X1.0X16)
15	54 755 15-S	1	Grass Screen Kit (Includes 16-17)
16	25 086 117-S	4	Screw-Flange, Sems (M4X.7X25)
17	24 113 18-S	1	Decal-Grass Screen
18	41 403 09-S	1	Rectifier-Regulator
19	25 086 157-S	2	Screw-Hex Flange, Hi-Lo
20	236602-S	1	Connector (3 Contact)
21	235173-S	1	Clip-Cable
22	X-25-63-S	1	Washer-Flat (1/4)

Ref	Part No.	Qty.	Description
23	277563-S	1	Connector (1 Contact)
24	12 132 02-S	2	Spark Plug
25	12 154 01-S	1	Clamp-Insulated
26	24 176 130-S	1	Harness-Dsai Wiring
27	25 176 11-S	1	Harness-Lead Duplex
28	24 176 112-S	1	Harness-Wiring
29	24 176 131-S	1	Wiring Harness ASM
30	24 518 09-S	1	Lead-Oil Sentry
31	25 454 07-S	2	Tie-Wire
32	25 518 34-S	1	Lead
33	25 452 01-S	2	Terminal

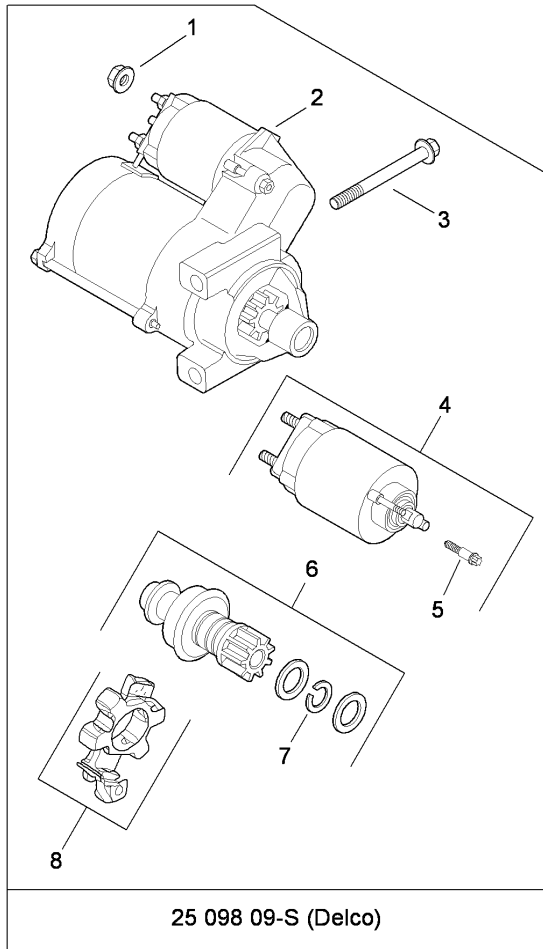


## Blower Housing and Baffle Assembly Kohler CH740-3122

Ref	Part No.	Qty.	Description
❶❶1	24 027 183-S	1	Blower Housing Kit (Includes 2-5 And 41 037 10-S)
❶❶2	25 100 37-S	3	Nut-Plastic (Black)
❶❶3	24 332 01-S	5	Insert-Threaded
❶❶4	24 100 02-S	2	Nut-Plastic
❶❶5	25 139 16-S	1	Plug-Button (9/16)
❶❶6	24 755 81-S	1	Fixed Guard Kit (Includes 7-9)
❶❶7	24 332 01-S	5	Insert-Threaded
❶❶8	25 086 160-S	5	Screw-Sems
❶❶9	24 113 18-S	1	Decal-Grass Screen
❶❶10	M-645016-S	6	Screw-Flange, Thread Forming (M6X1.0X16)
❶❶11	24 146 55-S	1	Plate-Backing
❶❶12	24 063 88-S	1	Baffle-Barrel, Cylinder (No. 2 Side)
❶❶13	24 063 70-S	1	Baffle-Valley, No. 2 Side
❶❶14	24 063 59-S	1	Baffle-Valley (No. 1 Side)
❶❶15	24 063 85-S	1	Barrel-Cylinder (No. 1 Side)
❶❶16	M-561016-S	1	Screw-Flange, Thread Forming (M5X.8X16)
❶❶17	M-545010-S	2	Screw-HHFTF (M5X.8X10)
❶❶18	M-545020-S	2	Screw-Flange, Thread Forming (M5X.8X20)
❶❶19	41 037 10-S	1	Nameplate-Service

--	--	--	--

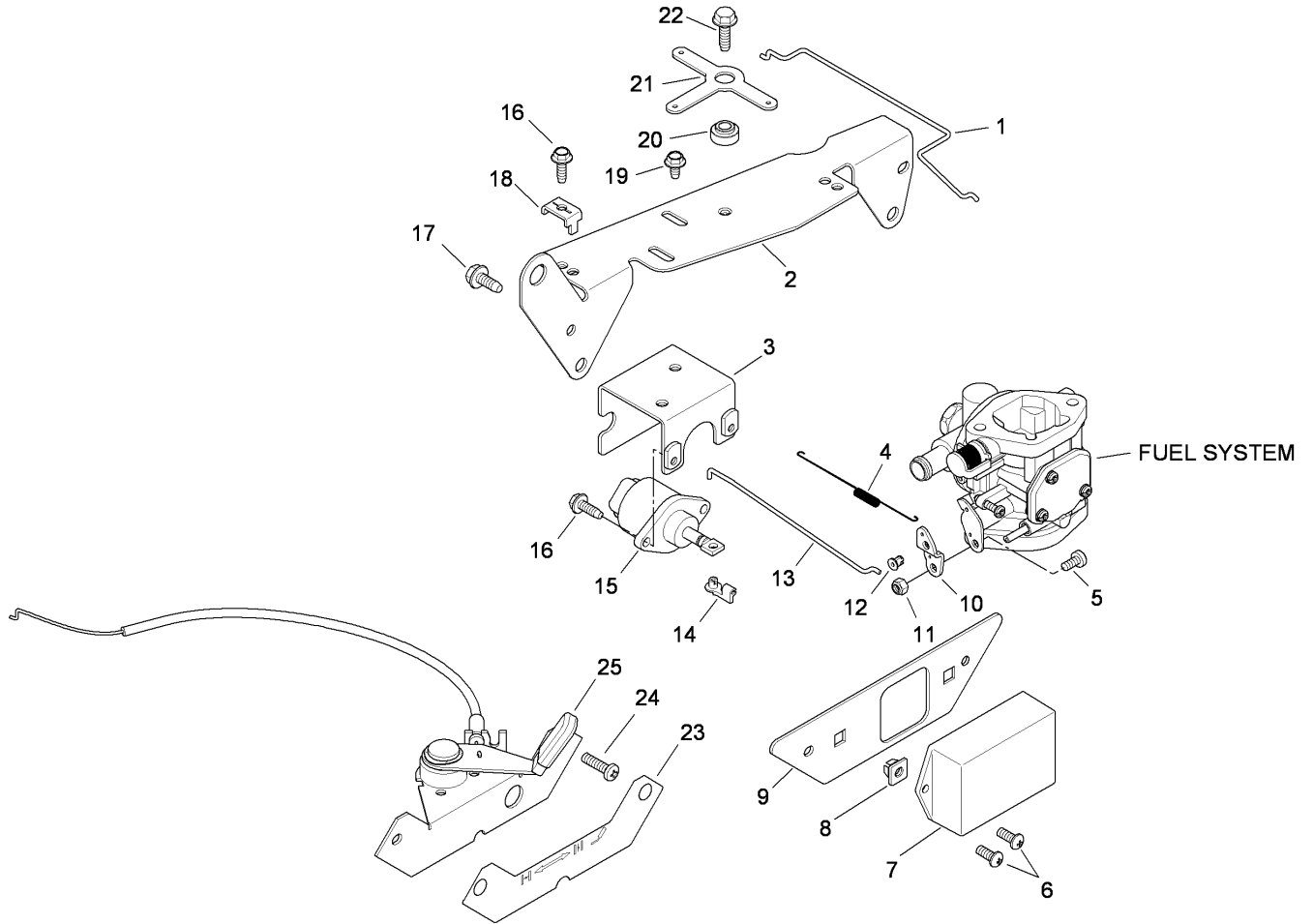




## Starting System Assembly Kohler CH740-3122

Ref	Part No.	Qty.	Description				
❶	M-841080-S	1	Nut-Flange (M8X1.25)				
❷	25 098 09-S	1	Starter ASM (Solenoid Shift) (Includes 1 And 3-8)				
❸	M-851080-S	2	Screw-Flange (M8X1.25X80)				
❹	25 435 06-S	1	Solenoid Kit (Includes 5)				
❺	25 086 113-S	3	Screw-Torx Head, External				
❻	25 755 33-S	1	Starter Pinion Kit (Includes 7)				
❼	25 141 05-S	1	Ring-Retaining				
❽	25 221 01-S	1	Brush Holder Kit				



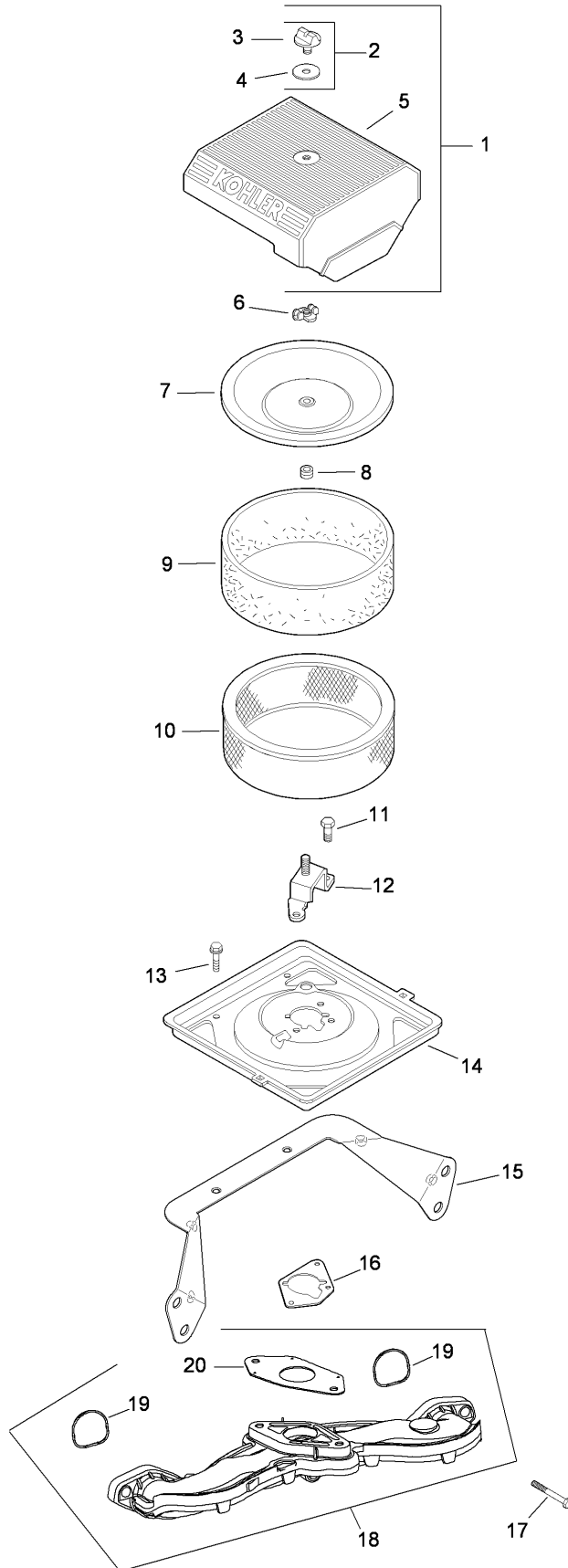


## Engine Control Assembly Kohler CH740-3122

Ref	Part No.	Qty.	Description
❶1	24 079 18-S	1	Linkage-Choke
❶2	24 126 114-S	1	Bracket-Control
❶3	24 126 115-S	1	Bracket-Actuator
❶4	24 089 54-S	1	Spring-Linkage
❶5	24 086 35-S	1	Screw-Lbd Socket Pan, M5X0.8X10
❶6	24 086 41-S	4	Screw-PPH (#11-16X1/2)
❶7	24 584 59-S	1	Module-Electronic, Governor
❶8	24 100 02-S	2	Nut-Plastic
❶9	24 378 01-S	1	Panel-Control, Front
❶10	24 029 78-S	1	Adapter-Lever, Carburetor
❶11	M-547050-S	1	Nut-Lock (M5X.8)
❶12	25 158 08-S	1	Bushing-Linkage, Throttle
❶13	24 079 04-S	1	Linkage-Throttle
❶14	25 158 11-S	1	Bushing-Retaining, Linkage
❶15	24 179 02-S	1	Actuator Kit, Linear-Digital
❶16	M-545016-S	3	Screw-Flange, Thread Forming (M5X0.8X16)
❶17	M-645016-S	4	Screw-Flange, Thread Forming (M6X1.0X16)
❶18	12 237 01-S	1	Clamp-Cable
❶19	M-545010-S	4	Screw-HHFTF (M5X.8X10)
❶20	15 112 08-S	1	Spacer
❶21	24 090 39-S	1	Lever-Choke
❶22	M-645020-S	1	Screw-HHFTF (M6X1.0X20)

Ref	Part No.	Qty.	Description
❶23	24 113 127-S	1	Decal-Panel, Control
❶24	24 086 06-S	2	Screw-PPH (11-16X3/4)
❶25	24 225 06-S	1	Cable Control ASM
❶26	25 100 25-S	1	Nut, 3/8-24 (Grade 2)

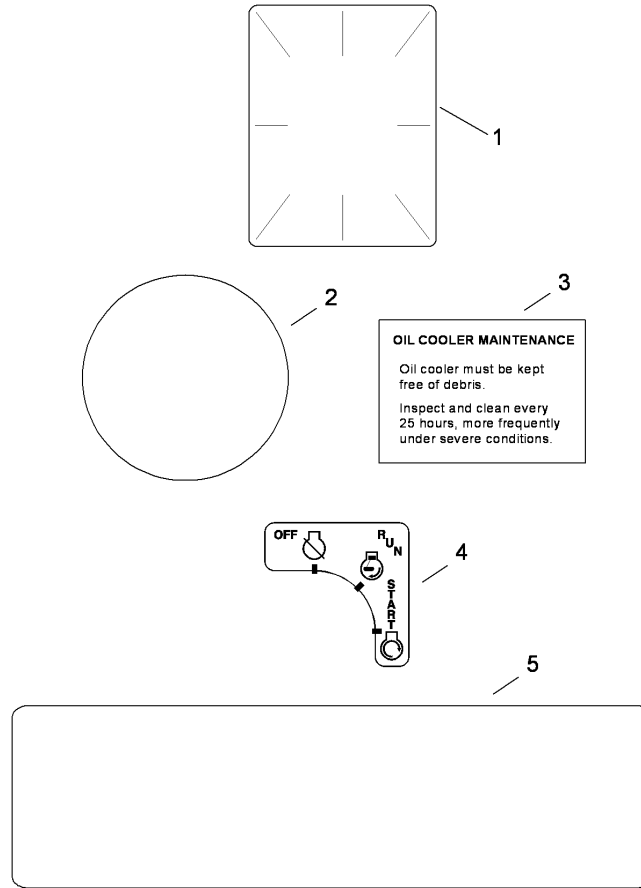
# Air Intake and Filtration Assembly Kohler CH740-3122



## Air Intake and Filtration Assembly Kohler CH740-3122

Ref	Part No.	Qty.	Description				
①	24 743 06-S	1	Air Cleaner Cover Kit (Includes 2-5)				
②	54 755 01-S	1	Knob W/Seal Kit (Includes 3-4)				
③	25 341 04-S	1	Knob-Cover				
④	24 153 20-S	1	O-Ring				
⑤	24 096 26-S	1	Cover-Air Cleaner				
⑥	12 100 01-S	1	Nut-Wing				
⑦	24 096 01-S	1	Cover-Air Cleaner, Inner				
⑧	230046-S	1	Seal				
⑨	24 083 05-S	1	Pre-Cleaner				
⑩	24 083 03-S	1	Element-Air Filter				
⑪	24 086 53-S	3	Screw-Flange, Thread Forming (M6X1.0X16)				
⑫	24 126 88-S	1	Bracket-Air Cleaner				
⑬	M-545010-S	2	Screw-HHFTF (M5X.8X10)				
⑭	24 094 37-S	1	Base-Air Cleaner				
⑮	24 126 130-S	1	Bracket-Base, Air Cleaner				
⑯	24 041 06-S	1	Gasket-Base, Air Cleaner				
⑰	M-651040-S	4	Screw-Flange (M6X1.0X40)				
⑱	24 164 93-S	1	Intake Manifold Kit (Includes 19-20)				
⑲	24 153 27-S	2	O-Ring				
⑳	24 041 53-S	1	Gasket-Carburetor				





Artwork is representative.  
Actual labels may differ depending on model and specification number.

## Decal and Gasket Set Assembly Kohler CH740-3122

Ref	Part No.	Qty.	Description
1	25 113 39-S	1	Decal-Laminate, Clear
2	24 113 18-S	1	Decal-Grass Screen
3	24 113 25-S	1	Decal-Cooler, Oil
4	24 113 126-S	1	Decal-Key Switch
5	24 113 123-S	1	Decal-Command 27 Hp
6	24 782 32	1	Mini Block (C I Bore)
7	24 755 158-S	1	Gasket Set

--	--	--	--

