



# Sprayer Cylinder Lift Kit for Workman 200 Spray System

Model No. 117-4846

## Installation Instructions

# Safety

## Safety and Instructional Decals



Safety decals and instructions are easily visible to the operator and are located near any area of potential danger. Replace any decal that is damaged or lost.



119-0651

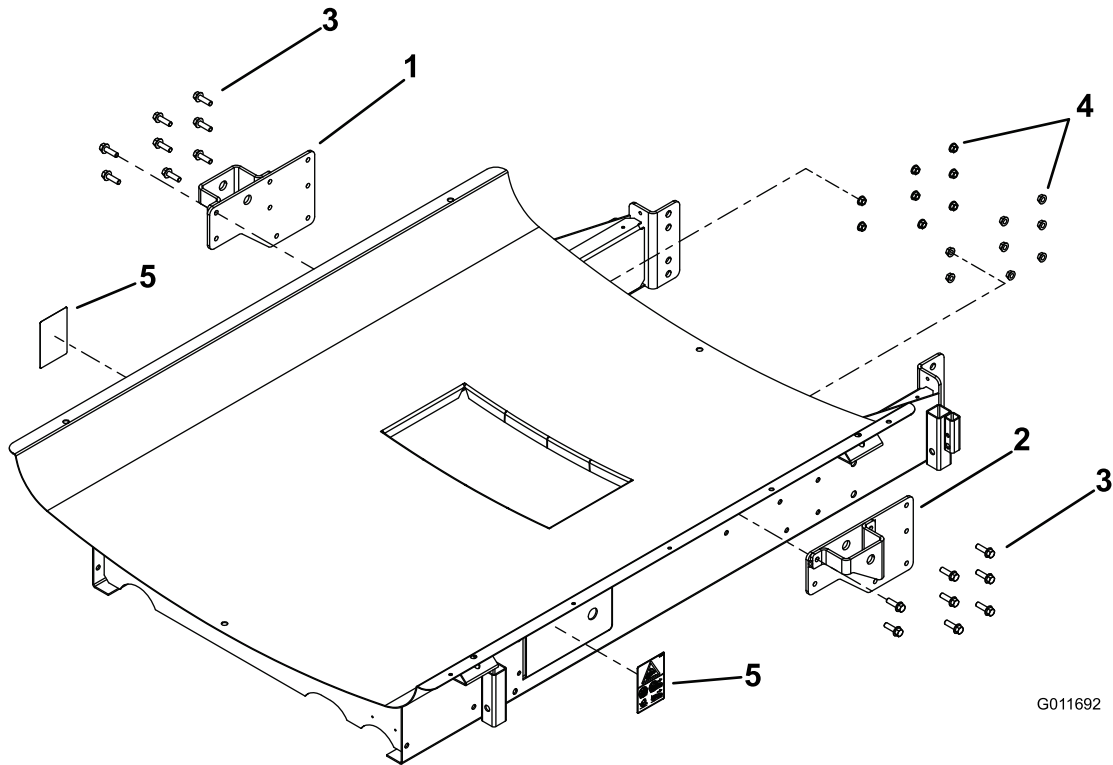
1. Tipping hazard, loss of control—do not raise the tank when filled; do not drive the vehicle while tank is raised. Raise the tank when empty only; always lower the tank completely before driving the vehicle.

# Installation

## Loose Parts

Use the chart below to verify that all parts have been shipped.

Description	Qty.	Use
No parts required	—	Prepare the tank skid.
Right spray cylinder bracket	1	Install the spray cylinder brackets.
Left spray cylinder bracket	1	
Bolt (3/8 x 1-1/4 inches)	16	
Flange nut (3/8 inch)	16	
Decal 119-0651	2	



G011692

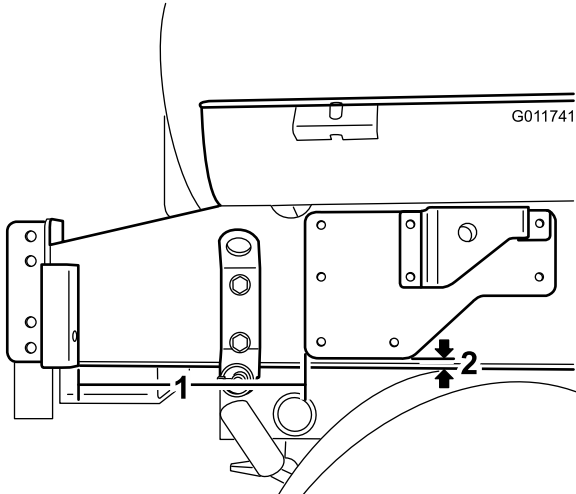
**Figure 1**

- 1. Right bracket
- 2. Left bracket
- 3. Bolt (3/8 x 1-1/4 inches)
- 4. Flange nut (3/8 inch)
- 5. Decal 119-0651

# Preparing the Tank Skid

If the tank skid does not have the existing mounting holes new ones will have to be drilled. If the hole exist, skip this procedure and install the brackets.

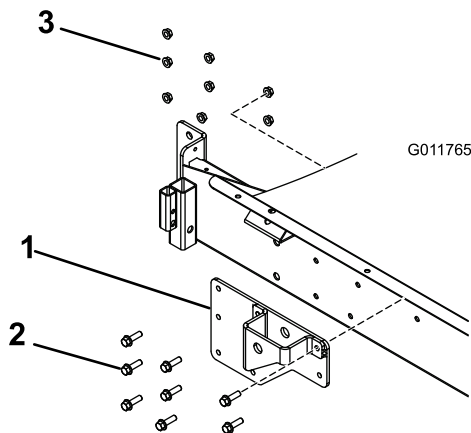
1. Retract the lift cylinders to avoid interference when installing the brackets.
2. Use the bracket from loose parts to locate the holes to be drilled.
3. Position the right bracket on the right side of the tank skid as shown in Figure 2. Use a center punch to mark the 8 holes in the bracket.



**Figure 2**  
Right side shown

1. 11.25 inch
2. 0.5 inch

4. Install the left and right spray cylinder brackets to the tank skid as shown in Figure 3. Secure each bracket to the frame using eight bolts (3/8 x 1-1/4 inches) and flange nuts (3/8 inch).



**Figure 3**  
Right side shown

- 1.

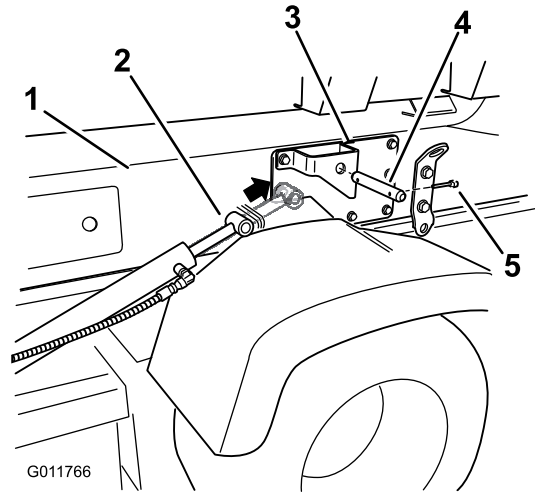
5. Using the bracket as a guide, drill a large hole (13/16 inch) through the tank skid.

**Important:** Drill carefully to avoid ovaling the existing holes in the bracket and damaging internal components behind the tank skid.

6. Repeat these steps on the left side using the left bracket.

# Installing the Spray Cylinder Brackets

1. Install a decal on the access panels on the left and right sides of the skid (Figure 1).
2. Extend the lift cylinders to the brackets on the tank skid. Align the cylinder arms with the holes in the tank skid brackets (Figure 4).



**Figure 4**

1. Tank skid
2. Lift cylinders
3. Tank skid brackets
4. Clevis pin
5. Lynch pin

3. Use the clevis pin and lynch pin to secure the tank skid to the lift cylinders on both sides of the vehicle (Figure 4).
4. Remove the bracket and prop rod from the tank skid loose parts and discard.

# Operation

## Raising the Tank Assembly

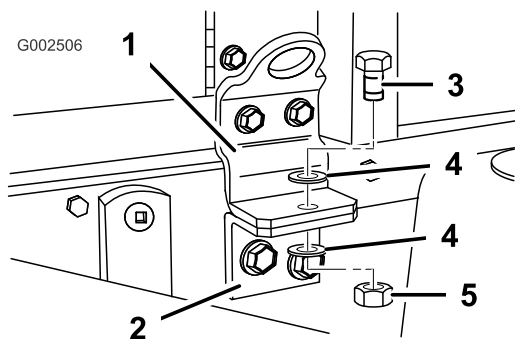


The sprayer tank assembly represents a stored energy hazard. If not properly retained when installing or removing the assembly it can move or fall and injure you or other bystanders.

Use straps and an overhead lift to support the sprayer tank assembly during installation, removal or any maintenance when the retaining fasteners are being removed.

An **empty** tank assembly can be tipped or raised up to allow full access to the engine and other internal components. It is recommended to pivot the boom extension forward to distribute the weight more evenly. Use the following procedure

1. Park the vehicle with an **empty** tank on a level surface.
2. Use the boom control switches to raise the boom extension to approximately 45°. Then stop the machine, engage the parking brake and remove the key.
3. Remove the safety bolts from the front of the skid (Figure 5).



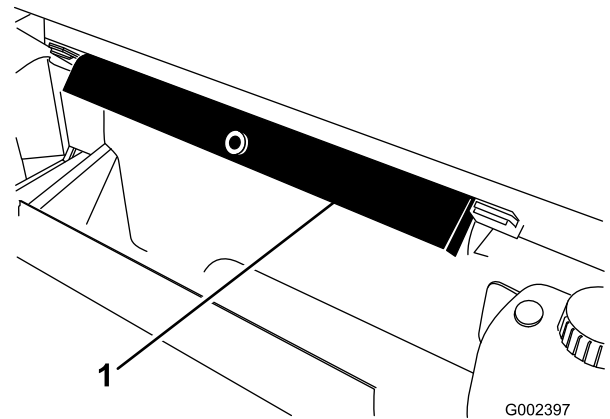
**Figure 5**

Left side shown

- |                              |                       |
|------------------------------|-----------------------|
| 1. Front mounting bracket    | 4. Washer (1/2 inch)  |
| 2. Hold-down bracket         | 5. Locknut (1/2 inch) |
| 3. Bolt (1/2 x 1-1/2 inches) |                       |

4. Fold the boom extensions forward, alongside the tank assembly to distribute the weight more evenly and keep it from tipping back.
5. Raise the tank assembly until the lift cylinders are fully extended.

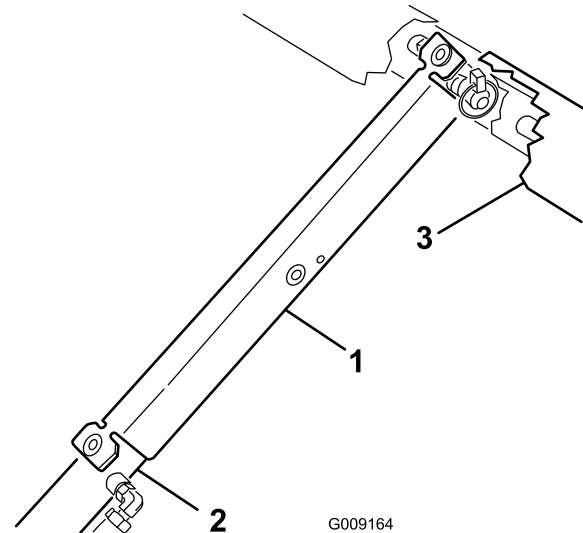
6. Remove the bed support from the storage brackets on back of the ROPS panel (Figure 6).



**Figure 6**

1. Bed support

7. Push the bed support onto the cylinder rod, making sure the support end tabs rest on the end of cylinder barrel and on the cylinder rod end (Figure 7).



**Figure 7**

- |                    |        |
|--------------------|--------|
| 1. Bed support     | 3. Bed |
| 2. Cylinder barrel |        |

## Lowering the Tank Assembly

1. When finished, remove the bed support from the cylinder and insert it into the brackets on the back of the ROPS panel.



**Do not try to lower the tank assembly with bed safety support on cylinder.**

2. Retract the lift cylinders to carefully lower the tank to the frame.
3. Install the two hold down bolts and fasteners to secure the tank assembly
4. Fold the boom extensions rearward to the extended position.
5. Use the boom control switches to raise the boom extensions to the transport position.

**Notes:**

**Notes:**



**Count on it.**