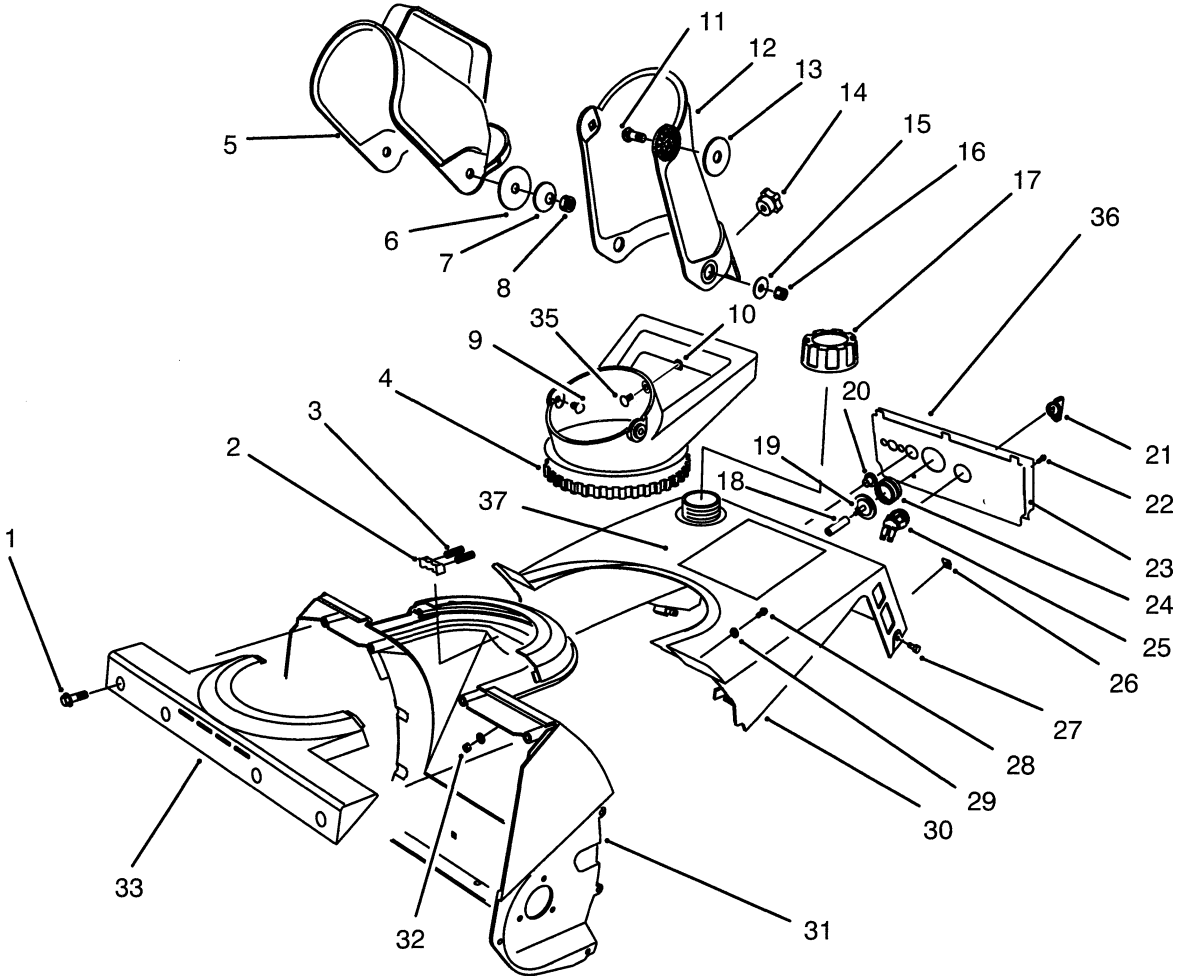




MODEL NO. 38171-5900001 Thru
6900001 & UP
MODEL NO. 38176-5900001 & UP
6900001 & UP

**PARTS
CATALOG**

**CCR POWERLITE® RECOIL
CCR POWERLITE® ELECTRIC**

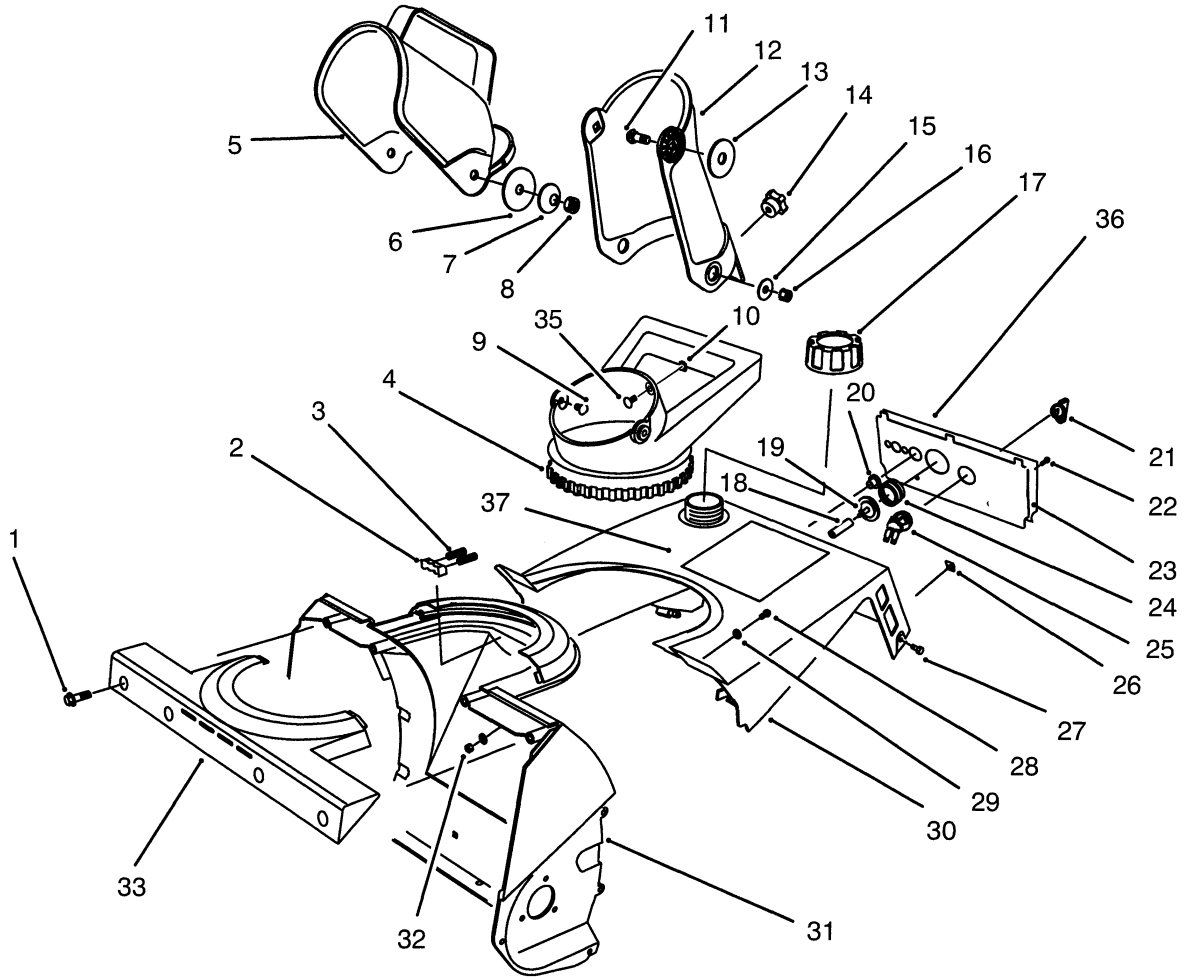


C-2100

CHUTE ASSEMBLY

Ref. No.	Part No.	Description	No. Used
1	46-8094	Screw - Hex. Washer Hd.	4
2	75-9160	Detent - Chute	1
3	75-9170	Spring - Compression	2
4	75-8670	Handle - Chute	1
5	75-8770	Deflector - Chute	1
6	3256-68	Washer - Flat	2
7	3290-340	Washer - Belleville	2
8	3296-29	Nut - Lock	2
9	321-3	Screw	2
10	32115-15	Retainer	3
11	3230-2	Screw - Carriage	2
12	75-8762	Chute - Discharge	1
13	80-0640	Washer - Rubber	2
14	233-67	Knob	1
15	3256-81	Washer - Flat	2

Ref. No.	Part No.	Description	No. Used
16	3296-56	Nut - Lock	2
17	55-3573	Cap Assembly - Fuel	1
18	44-3173	Hose	1
19	44-2750	Body - Primer	1
20	23-7470	Guide - Rope	1
21	63-8360	Key - Ignition	1
22	32144-53	Screw - Acorn Slotted Hd.	2
23	75-9031	Panel - Control (Model No. 38171 Only)	1
	75-9030	Panel - Control (Model No. 38176 Only)	1
24	66-7460	Bulb - Primer	1
25	40-5940	Switch - On/Off	1
26	49-1490	J-Nut	2
27	32144-89	Screw - Hex. Hd.	2



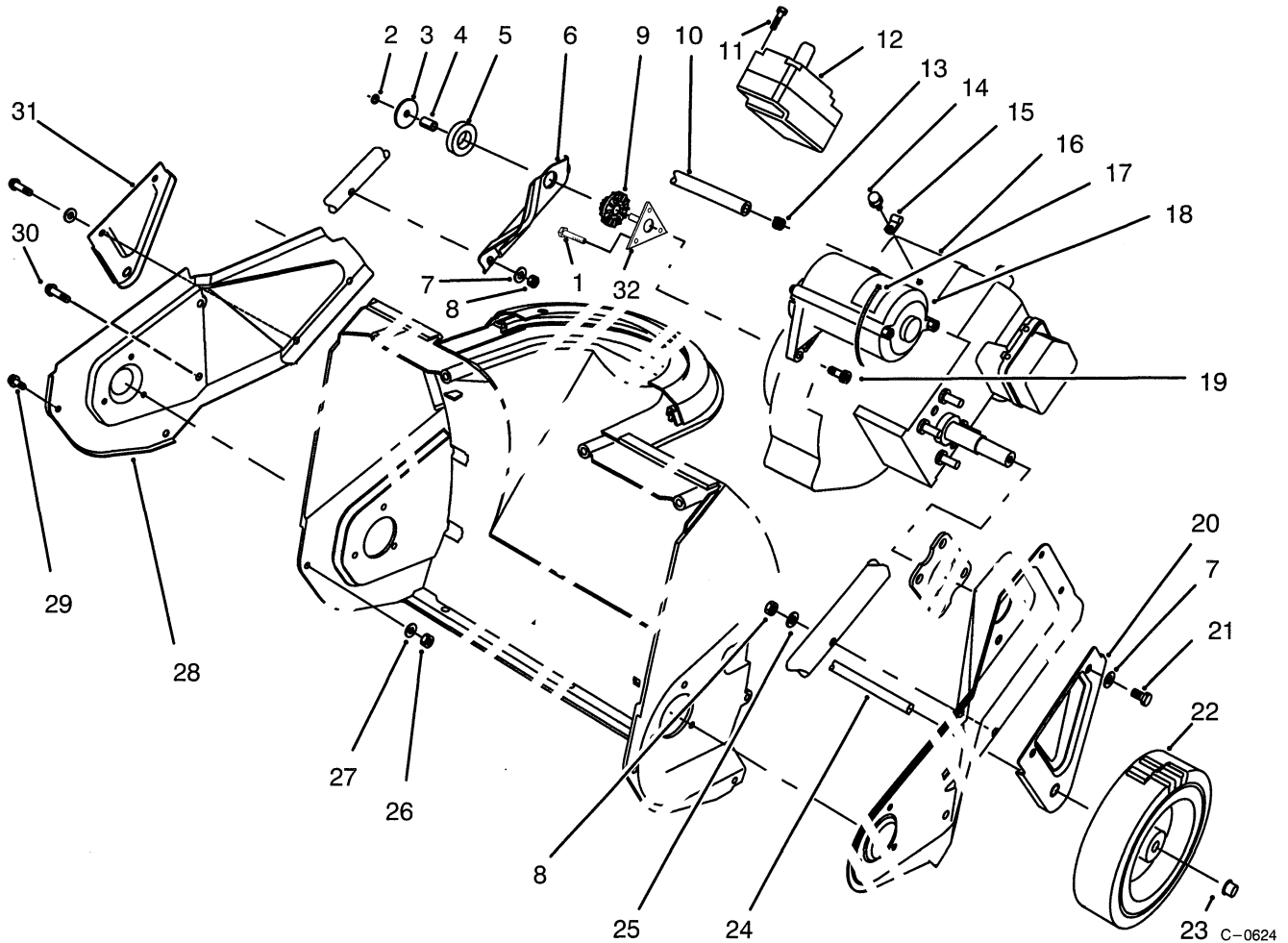
C-2100

CHUTE ASSEMBLY (CONTINUED)

Ref. No.	Part No.	Description	No. Used
28	3250-32	Screw - Pan Hd.	2
29	3256-1	Washer - Flat	4
30	75-8800	Shroud - Upper	1
31	75-8660	Housing	1
32	3296-42	Nut - Lock	2
33	75-8650	Retainer - Chute	1
35	3229-11	Bolt - Carriage	1

Ref. No.	Part No.	Description	No. Used
36	94-2565	Decal - Control Panel (Model No. 38171 only)	1
*	94-2564	Decal - Control Panel (Model No. 38176 only)	1
37	80-0680	Decal - Powerlite (Model No. 38171 Only)	1
*	80-0690	Decal - Powerlite (Model No. 38176 Only)	1

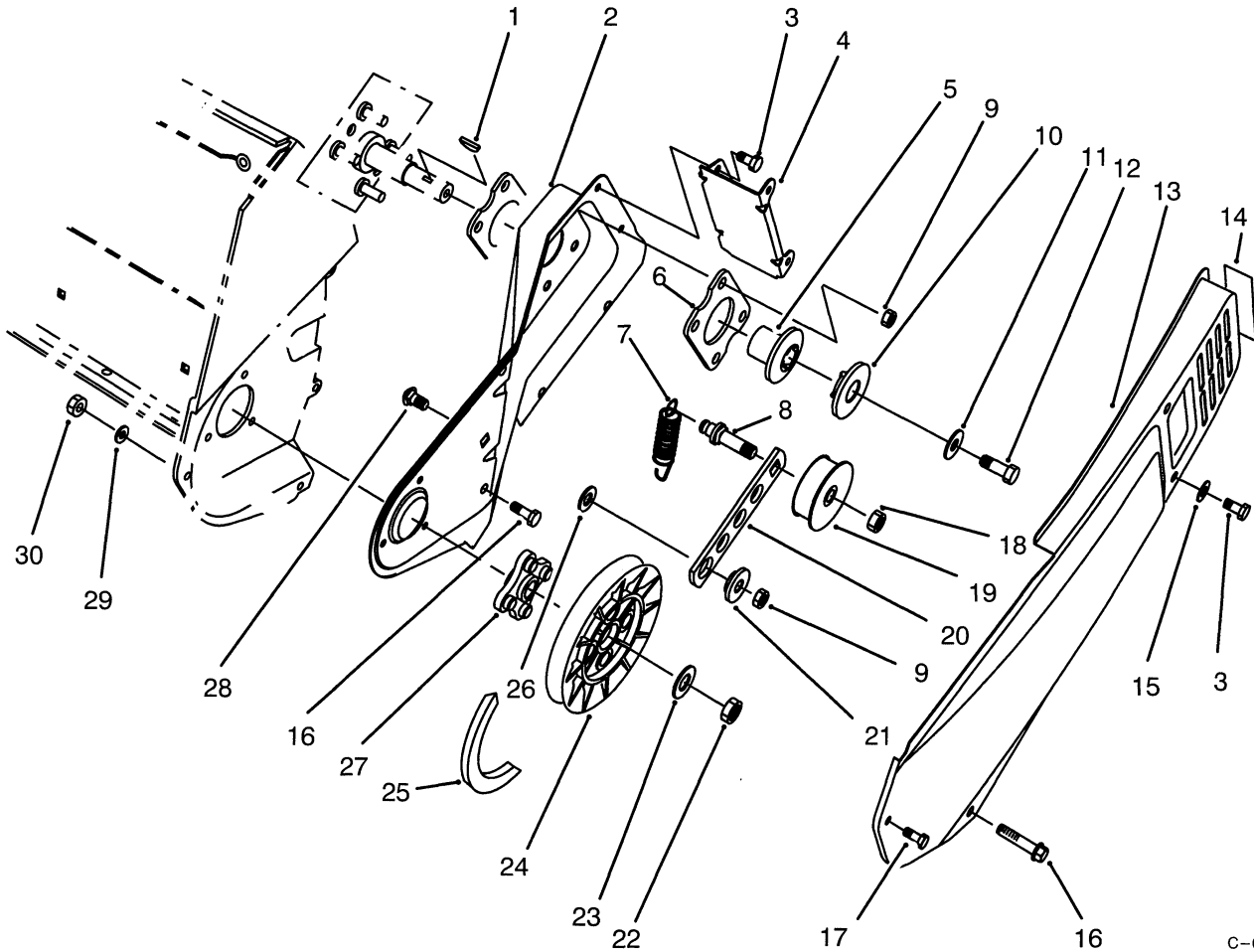
* Not Illustrated



ENGINE & WHEEL ASSEMBLY

Ref. No.	Part No.	Description	No. Used
1	92-6019	Screw - Thread Forming	3
2	3296-16	Nut - Lock	1
3	3256-58	Washer - Flat	1
4	80-0650	Spacer	1
5	80-0620	Ring - Isolator	1
6	75-8980	Support - Engine	1
7	3256-1	Washer - Flat	6
8	3296-42	Nut - Lock	4
9	75-9100	Bushing - Isolation	1
10	49-2483	Hose - Fuel	1
11	32144-27	Screw (Model No. 38176 Only)	2
12	77-0402	Motor Switch Housing Ass'y (Model No. 38176 Only)	1
13	2412-98	Clamp - Hose	2
14	32144-10	Screw - Hex Washer Hd. (Model No. 38176 Only)	1
15	2412-91	Clamp - Cable (Model No. 38176 Only)	1
16		Engine (HSK600-1680S)	1

Ref. No.	Part No.	Description	No. Used
17	250-7	Strap - Motor (Model No. 38176 Only)	1
18	77-0402	Starter Motor Assembly (Model No. 38176 Only)	1
19	80-0700	Screw (Model No. 38176 Only)	2
20	75-8910	Bracket - Wheel L.H.	1
21	321-10	Screw - Hex. Hd.	4
22	23-3250	Wheel	2
23	3290-320	Nut - Push On	2
24	27-0062	Axle	1
25	3-7501	Washer - Curved	2
26	3296-2	Nut - Lock	1
27	3256-14	Washer - Flat	1
28	75-8820	Sideplate - R.H.	1
29	32105-23	Screw - Hex. Washer Hd.	1
30	46-8094	Screw - Hex. Washer Hd.	3
31	75-8900	Bracket - Wheel R.H.	1
32	92-6012	Bracket & Stud Assembly	1

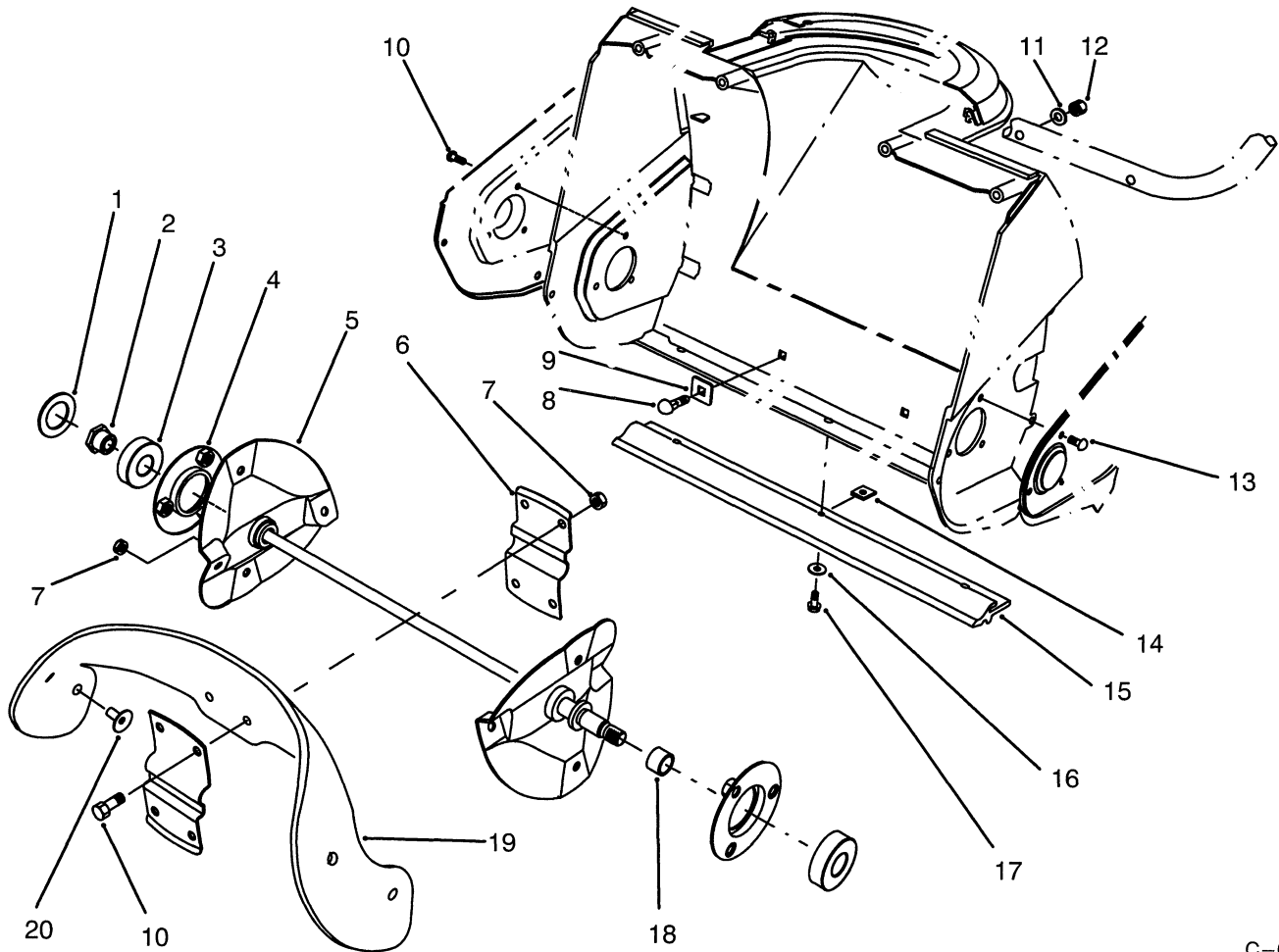


C-0625

PULLEY & BELT COVER ASSEMBLY

Ref. No.	Part No.	Description	No. Used
1	3257-3	Key - Woodruff	1
2	75-8810	Sideplate - L.H.	1
3	32144-4	Screw - Hex. Hd.	4
4	75-8870	Bracket - Belt Cover	1
5	71-5050	Hub - Half Sheave	1
6	71-5290	Plate Engine	2
7	75-9020	Spring - Idler	1
8	75-8720	Pin - Idler	1
9	3296-29	Nut - Lock	5
10	71-5060	Cap - Half Sheave	1
11	3256-71	Washer - Flat	1
12	3235-6	Screw - Hex. Hd.	1
13	75-8830	Cover - Belt	1
14	94-2561	Decal - Hot	1
15	3256-1	Washer - Flat	2

Ref. No.	Part No.	Description	No. Used
16	46-8094	Screw - Hex. Washer Hd.	3
17	32105-23	Screw - Hex. Hd.	1
18	3296-59	Nut - Lock	1
19	71-5260	Pulley - Idler	1
20	75-9050	Arm - Idler	1
21	75-8700	Bushing - Idler	1
22	3296-38	Nut - Lock	1
23	3256-25	Washer - Flat	1
24	75-8750	Pulley - Driven	1
25	75-9010	V-Belt - Drive	1
26	25-5640	Washer	1
27	75-8740	Hub - Driven Pulley	1
28	3230-23	Screw - Carriage	1
29	3256-14	Washer - Flat	1
30	3296-2	Nut - Lock	1

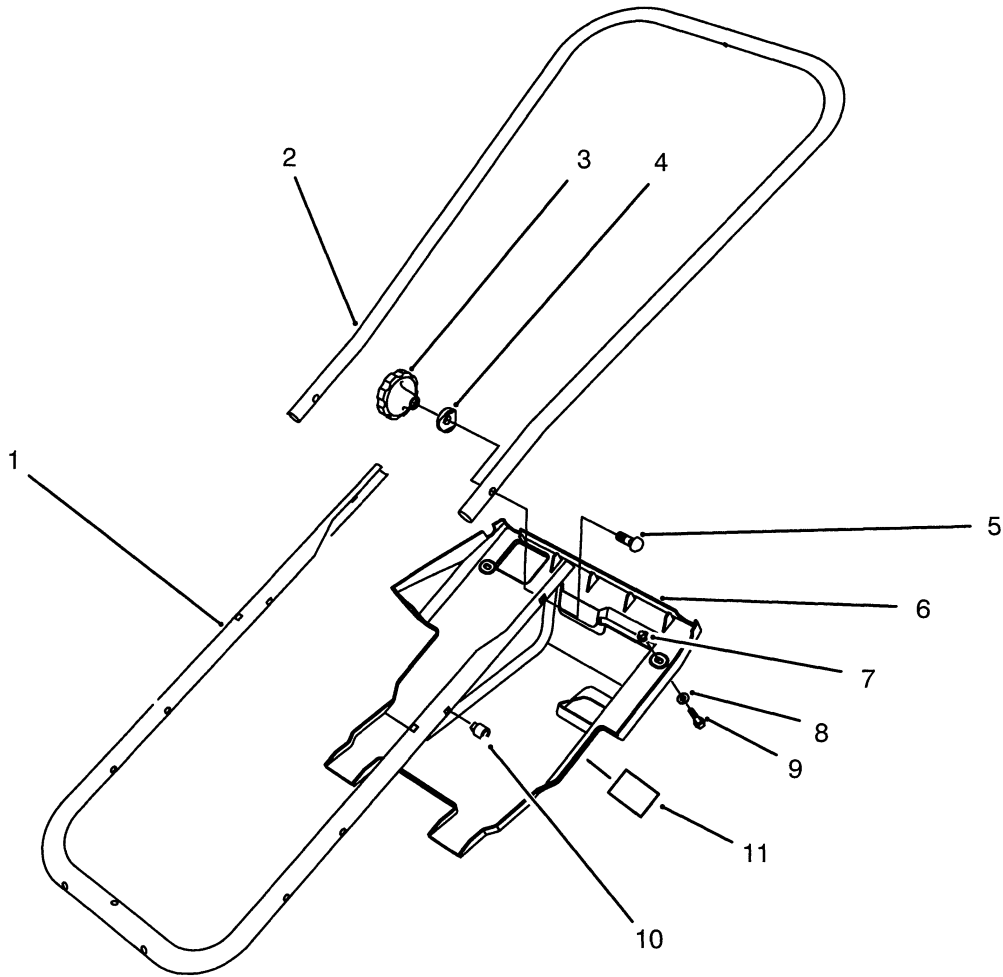


AUGER ASSEMBLY

C-0626

Ref. No.	Part No.	Description	No. Used
1	75-9180	Washer - Rubber	1
2	75-8690	Nut - Rotor Shaft	1
3	38-7820	Bearing - Ball	2
4	75-9080	Flange - Bearing	2
5	75-8840	Rotor	1
6	75-8880	Support - Rotor	2
7	3296-56	Nut - Lock	12
8	3229-5	Screw - Carriage	2
9	75-9040	Washer - Square	2
10	3234-33	Screw - Hex. Hd.	7

Ref. No.	Part No.	Description	No. Used
11	3-7501	Washer - Curved	2
12	3296-42	Nut - Lock	2
13	321-3	Screw - Hex. Hd.	3
14	32115-19	J-Nut	3
15	75-8780	Scraper	1
16	3256-14	Washer - Flat	3
17	32144-34	Screw - Hex. Hd.	3
18	75-8710	Spacer - Auger Shaft	1
19	84-1980	Blade - Rotor	2
20	84-1970	Screw - Countersunk Oval	8

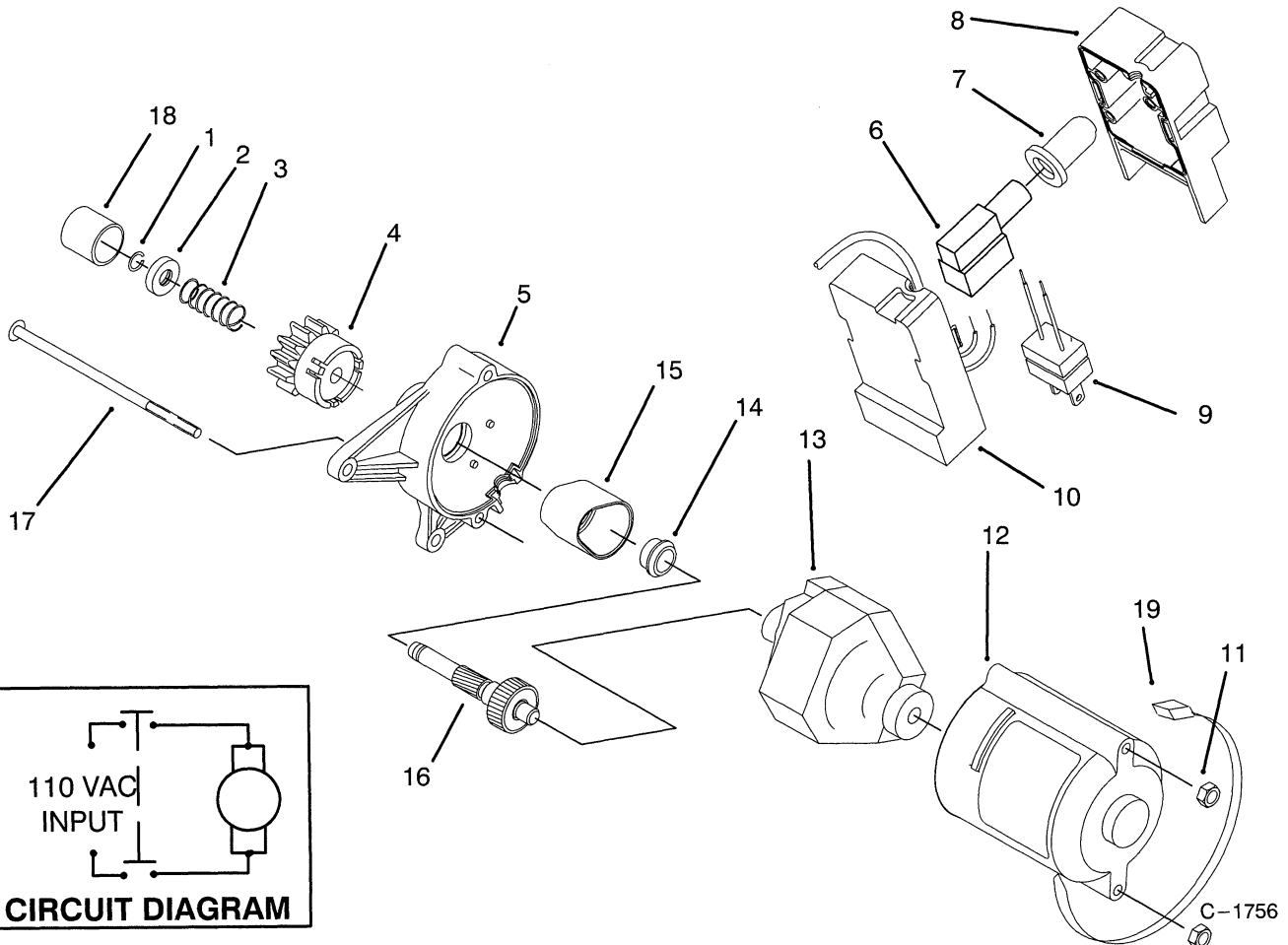


C-0627

HANDLE ASSEMBLY

Ref. No.	Part No.	Description	No. Used
1	75-9060	Tube - Frame	1
2	75-9070	Handle - Upper	1
3	19-4050	Knob - Handle Release	2
4	75-9130	Washer - PM	2
5	17-9426	Screw - Handle	2
6	75-8790	Shroud - Lower	1

Ref. No.	Part No.	Description	No. Used
7	3290-453	Nut - Push	2
8	3256-14	Washer - Flat	2
9	32144-34	Screw - Hex. Hd.	2
10	32115-17	Nut - Push	2
11	94-2581	Decal - Warning (Model No. 38176 Only)	1



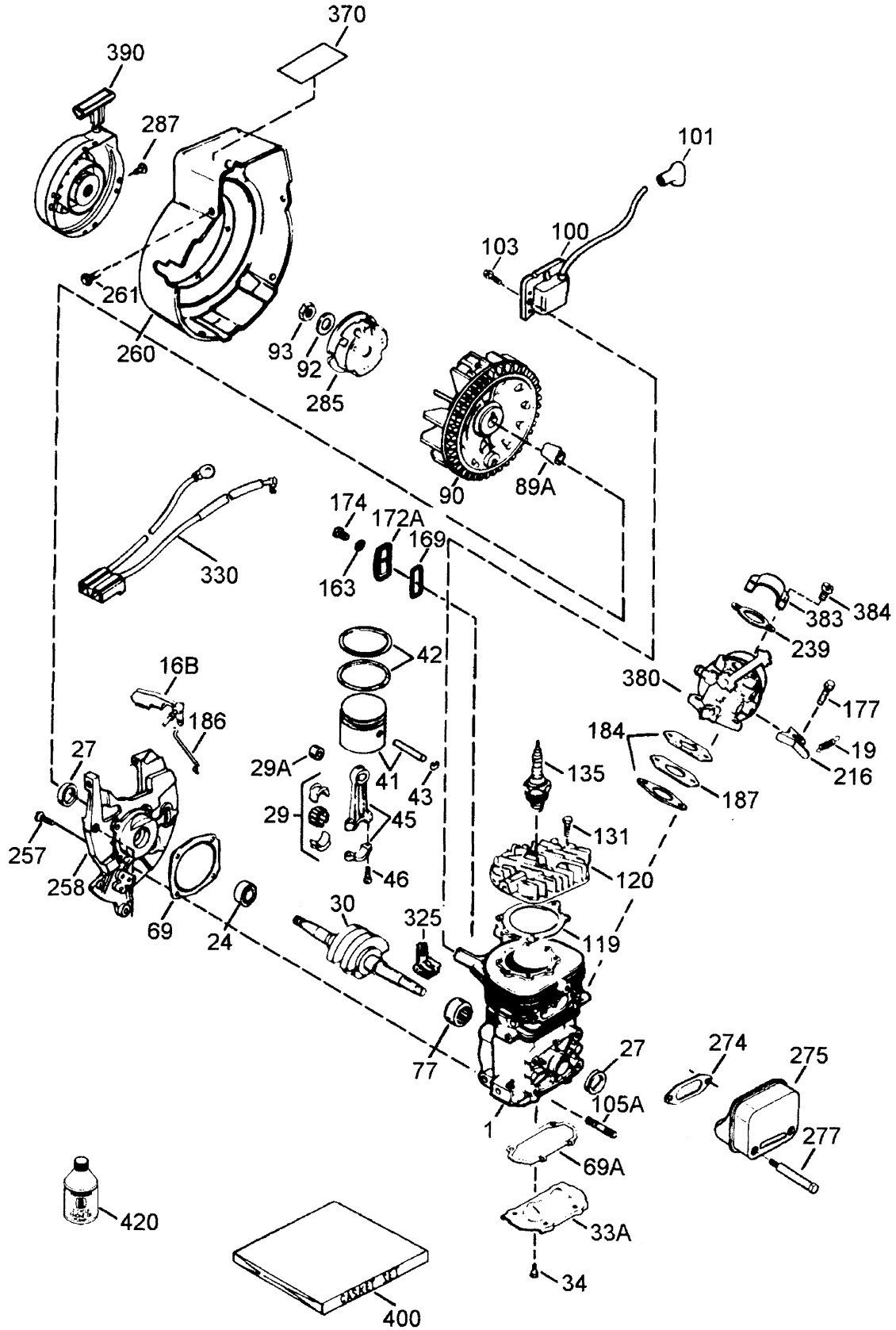
STARTER MOTOR ASSEMBLY & SWITCH HOUSING (MODEL 38176 ONLY)

Ref. No.	Part No.	Description	No. Used
1	61-4680	Ring - Lock	1
2	61-4670	Stop - Pinion	1
3	61-4690	Spring - Anti - Drift	1
4	84-5240	Pinion Assembly	1
5	70-7810	Housing - Upper Starter	1
6	36-8340	Switch - Starter	1
7	36-8350	Boot - Switch	1
8	80-3740	Cap - Switch Housing	1
9	36-8370	Plug - Power	1
10	80-3730	Base - Switch Housing	1
11	3296-2	Nut - Lock	2

Ref. No.	Part No.	Description	No. Used
12	70-7820	Housing - Lower Starter	1
13	70-7802	Motor	1
14	70-7900	Bushing - Upper	1
15	70-7850	Cover - Gear	1
16	92-6003	Gear & Shaft Assembly	1
17	32144-101	Screw - Machine	2
18	70-7890	Cap - Pinion	1
*	77-0402	Starter Motor Assembly (Incl. Ref# 1-5, 11-18 & 20)	1
*	28-9170	Cord - 7 Ft.	1
19	250-7	Cable Tie	1

*Not Illustrated

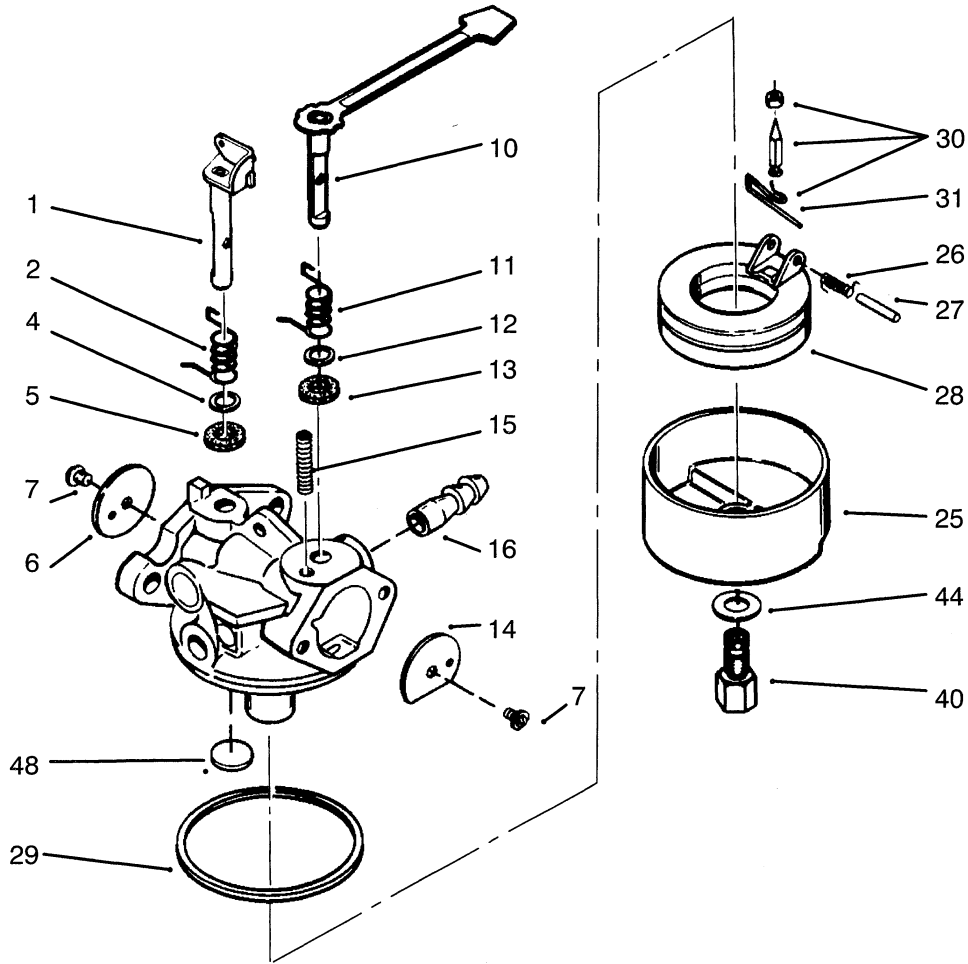
ENGINE TECUMSEH MODEL NO. HSK600 TYPE 1680S



ENGINE TECUMSEH MODEL NO. HSK600 TYPE 1680S

Ref. No.	Part No.	Description	No. Used	Ref. No.	Part No.	Description	No. Used
1		Block Ass'y – Cylinder (Order short block if replacement is required)	1	135	611049	Plug – Spark (RCJ-8Y or equivalent)	1
16B	490291A	Vane Ass'y – Air	1	163	650838	Washer – Flat	1
19	570707	Spring – Governor	1	169	*510325A	Gasket – Cover	1
24	530110	Bearing – Ball	1	172A	570708	Cover Ass'y – Compression Release	1
27	510319	Seal – Crankshaft	2	174	650579	Screw – Torx. Hd.	1
29	530150	Bearing & Liner Set – Needle (37 Needles)	1	177	650959	Screw	2
29A	530104A	Bearing – Cartridge	1	184	*510326A	Gasket – Carburetor	2
30	290602	Crankshaft	1	186	490322	Link – Governor	1
33A	570644	Plate – Cover	1	187	570438A	Spacer	1
34	650579	Screw – Pan Flex Hd.	4	216	570645	Level – Adjusting	1
41	310283A	Piston & Pin Ass'y (Incl. ref. #43)	1	239	35815	Gasket – Filter Base	1
42	310190	Ring Set – Piston	1	257	650911	Screw – Torx Pan Hd.	4
43	310167	Ring – Piston Pin Retaining	2	258	350422	Base Ass'y – Blower Housing (Incl ref. #27)	1
45	310235B	Rod Ass'y – Connecting (Incl. ref. #29, 29A & 46)	1	260	350437	Housing – Blower	1
46	650633	Screw – Connecting Rod	2	261	650737	Screw – Hex. Washer Hd.	3
69	*510292A	Gasket – Cylinder Cover	1	274	*510207A	Gasket – Exhaust	1
69A	*510323A	Gasket – Cover Plate	1	275	390332	Muffler (Incl. Ref. #274 & 277)	1
77	530105	Bearing – Needle	1	277	650869	Screw – Torx Pan Hd.	2
89A	611032	Sleeve – Flywheel	1	285	590551	Cup – Starter	1
90	611066	Flywheel	1	287	650926	Screw	3
92	650815	Washer – Belleville	1	325A	29443	Clip – Spring	1
93	650390	Nut – Flywheel	1	330	611131A	Harness – Wire	1
100	34443A	Solid State Ass'y (Incl. Ref. #101)	1	370	35977	Decal – Caution	1
101	610118	Cover – Spark Plug	1	380	632641	Carburetor (Incl. ref. #184)	1
103	650814	Screw – Hex. Hd. Sems	2	383	570434	Baffle – Air	1
105A	650796	Stud – Cylinder	4	384	650229	Screw – Pan Hd. Sems	2
119	*510274A	Gasket – Cylinder Head	1	390	590652	Starter Ass'y – Rewind	1
120	250240B	Head – Cylinder	1	400	510324B	Gasket Set	1
131	650477	Screw – Pan Flex Hd.	5	422	730227A	Oil – 2 Cycle (8 oz.)	1

*Indicates parts included in Gasket Set ref. #400

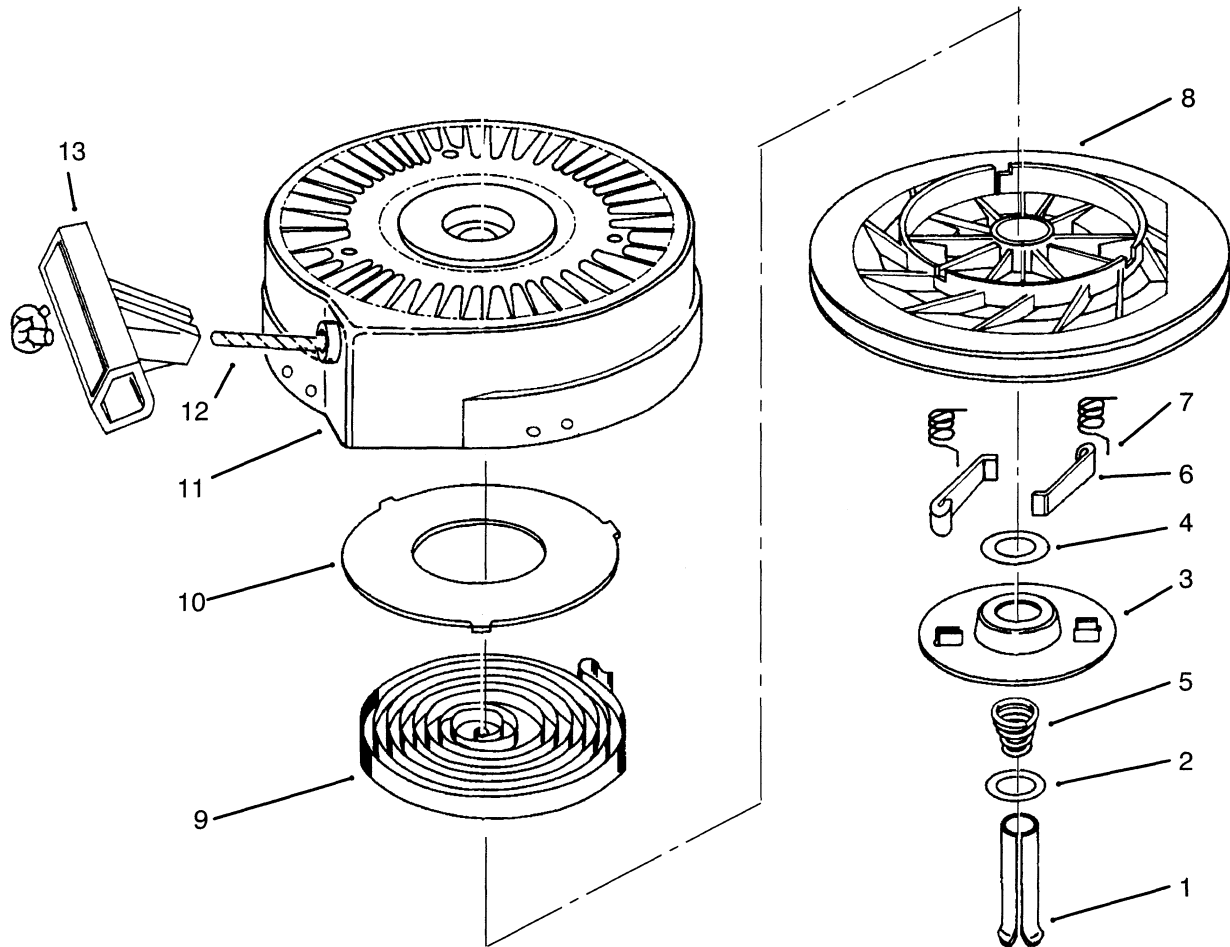


c-1748

CARBURETOR NO. 632641

Ref. No.	Part No.	Description	No. Used
1	632166	Throttle Shaft & Lever Assy.	1
2	632169	Spring - Throttle Return	1
4	631184	Washer - Steel	1
5	631183	Washer - Felt	1
6	631621	Shutter - Throttle	1
7	650506	Screw - Shutter	2
10	632553	Choke Shaft & Lever Assy.	1
14	631815	Shutter - Choke	1
15	630735	Spring - Choke Positioning	1
16	632164	Fitting - Fuel Inlet	1
25	631700	Bowl - Float	1

Ref. No.	Part No.	Description	No. Used
26	632386	Spring - Float Shaft	1
27	631024	Shaft - Float	1
28	632019	Float - Carburetor	1
29	631028	Seal - O-Ring	1
30	631021	Inlet Needle, Seat & Clip (Incl. ref. #3)	1
31	631022	Clip - Inlet Needle	1
40	632385	Nut - Float Bowl	1
44	631334	Gasket - Bowl	1
48	631027	Plug - Welch	1



c-1750

RECOIL STARTER NO. 590652

Ref. No.	Part No.	Description	No. Used	Ref. No.	Part No.	Description	No. Used
1	590599A	Pin - Spring (Incl. Ref. #4)	1	8	590413A	Pulley Assembly (Incl. Ref. #9 & 10)	1
2	590600	Washer	1	9	590619	Spring - Rewind	1
3	590615	Retainer	1	10	590620	Cover - Spring	1
4	590601	Washer	1	11	590643	Starter Housing Assembly	1
5	590598	Spring - Brake	1	12	590535	Rope - Starter	1
6	590616	Dog - Starter	2	13	590452	Handle - Starter	1
7	590617	Spring - Dog	2				

TORO PART NUMBER INDEX

Part No.	Description	Pg. Ref. No. No. Qty.	Part No.	Description	Pg. Ref. No. No. Qty.
3-7501	Washer - Curved	5 11 2	75-9010	V-Belt - Drive	4 25 1
3-7501	Washer - Curved	3 25 2	75-9020	Spring - Idler	4 7 1
17-9426	Screw - Handle	6 5 2	75-9030	Panel - Control	1 1
19-4050	Knob - Handle Release	6 3 2	75-9031	Panel - Control	1 23 1
23-3250	Wheel	3 22 2	75-9040	Washer - Square	5 9 2
23-7470	Guide - Rope	1 20 1	75-9050	Arm - Idler	4 20 1
25-5640	Washer	4 26 1	75-9060	Tube - Frame	6 1 1
27-0062	Axle	3 24 1	75-9070	Handle - Upper	6 2 1
28-9170	Cord - 7 Ft.	7 * 1	75-9080	Flange - Bearing	5 4 2
36-8340	Switch - Starter	7 6 1	75-9100	Bushing - Isolation	3 9 1
36-8350	Boot - Switch	7 7 1	75-9130	Washer - PM	6 4 2
36-8370	Plug - Power	7 9 1	75-9160	Detent - Chute	1 2 1
38-7820	Bearing - Ball	5 3 2	75-9170	Spring - Compression	1 3 2
40-5940	Switch - On/Off	1 25 1	75-9180	Washer - Rubber	5 1 1
44-2750	Body - Primer	1 19 1	77-0402	Motor Switch Housing Ass'y	3 12 1
44-3173	Hose	1 18 1	77-0402	Starter Motor Assembly	7 * 1
46-8094	Screw - Hex. Washer Hd.	1 1 4	77-0402	Starter Motor Assembly	3 18 1
46-8094	Screw - Hex. Washer Hd.	4 16 3	80-0620	Ring - Isolator	3 5 1
46-8094	Screw - Hex. Washer Hd.	3 30 3	80-0640	Washer - Rubber	1 13 2
49-1490	J-Nut	1 26 2	80-0650	Spacer	3 4 1
49-2483	Hose - Fuel	3 10 1	80-0680	Decal - Powerlite	2 37 1
55-3573	Cap Assembly - Fuel	1 17 1	80-0690	Decal - Powerlite	2 * 1
61-4670	Stop - Pinion	7 2 1	80-0700	Screw	3 19 2
61-4680	Ring - Lock	7 1 1	80-3730	Base - Switch Housing	7 10 1
61-4690	Spring - Anti - Drift	7 3 1	80-3740	Cap - Switch Housing	7 8 1
63-8360	Key - Ignition	1 21 1	84-1970	Screw - Countersunk Oval	5 20 8
66-7460	Bulb - Primer	1 24 1	84-1980	Blade - Rotor	5 19 2
70-7802	Motor	7 13 1	84-5240	Pinion Assembly	7 4 1
70-7810	Housing - Upper Starter	7 5 1	92-6003	Gear & Shaft Assembly	7 16 1
70-7820	Housing - Lower Starter	7 12 1	92-6012	Bracket & Stud Assembly	3 32 1
70-7850	Cover - Gear	7 15 1	92-6019	Screw - Thread Forming	3 1 3
70-7890	Cap - Pinion	7 18 1	94-2561	Decal - Hot	4 14 1
70-7900	Bushing - Upper	7 14 1	94-2564	Decal - Control Panel	2 * 1
71-5050	Hub - Half Sheave	4 5 1	94-2565	Decal - Control Panel	2 36 1
71-5060	Cap - Half Sheave	4 10 1	94-2581	Decal - Warning	6 11 1
71-5260	Pulley - Idler	4 19 1	233-67	Knob	1 14 1
71-5290	Plate Engine	4 6 2	2412-91	Clamp - Cable	3 15 1
75-8650	Retainer - Chute	2 33 1	2412-98	Clamp - Hose	3 13 2
75-8660	Housing	2 31 1	250-7	Cable Tie	7 19 1
75-8670	Handle - Chute	1 4 1	250-7	Strap - Motor	3 17 1
75-8690	Nut - Rotor Shaft	5 2 1	321-3	Screw	1 9 2
75-8700	Bushing - Idler	4 21 1	321-3	Screw - Hex. Hd.	5 13 3
75-8710	Spacer - Auger Shaft	5 18 1	321-10	Screw - Hex. Hd.	3 21 4
75-8720	Pin - Idler	4 8 1	3229-5	Screw - Carriage	5 8 2
75-8740	Hub - Driven Pulley	4 27 1	3230-2	Screw - Carriage	1 11 2
75-8750	Pulley - Driven	4 24 1	3230-23	Screw - Carriage	4 28 1
75-8762	Chute - Discharge	1 12 1	3234-33	Screw - Hex. Hd.	5 10 7
75-8770	Deflector - Chute	1 5 1	3235-6	Screw - Hex. Hd.	4 12 1
75-8780	Scraper	5 15 1	3250-32	Screw - Pan Hd.	2 28 2
75-8790	Shroud - Lower	6 6 1	3256-1	Washer - Flat	3 7 6
75-8800	Shroud - Upper	2 30 1	3256-1	Washer - Flat	4 15 2
75-8810	Sideplate - L.H.	4 2 1	3256-1	Washer - Flat	2 29 4
75-8820	Sideplate - R.H.	3 28 1	3256-14	Washer - Flat	6 8 2
75-8830	Cover - Belt	4 13 1	3256-14	Washer - Flat	5 16 3
75-8840	Rotor	5 5 1	3256-14	Washer - Flat	3 27 1
75-8870	Bracket - Belt Cover	4 4 1	3256-14	Washer - Flat	4 29 1
75-8880	Support - Rotor	5 6 2	3256-25	Washer - Flat	4 23 1
75-8900	Bracket - Wheel R.H.	3 31 1	3256-58	Washer - Flat	3 3 1
75-8910	Bracket - Wheel L.H.	3 20 1	3256-68	Washer - Flat	1 6 2
75-8980	Support - Engine	3 6 1	3256-71	Washer - Flat	4 11 1

*Not Illustrated

TORO PART NUMBER INDEX (Cont.)

3316-970A

Part No.	Description	Pg. Ref. No. No. Qty.	Part No.	Description	Pg. Ref. No. No. Qty.
3256-81	Washer - Flat	1 15 2	3296-56	Nut - Lock	1 16 2
3257-3	Key - Woodruff	4 1 1	3296-59	Nut - Lock	4 18 1
3290-320	Nut - Push On	3 23 2	32105-23	Screw - Hex. Hd.	4 17 1
3290-340	Washer - Belleville	1 7 2	32105-23	Screw - Hex. Washer Hd.	3 29 1
3290-453	Nut - Push	6 7 2	32115-15	Retainer	1 10 3
3296-2	Nut - Lock	7 11 2	32115-17	Nut - Push	6 10 2
3296-2	Nut - Lock	3 26 1	32115-19	J-Nut	5 14 3
3296-2	Nut - Lock	4 30 1	32144-4	Screw - Hex. Hd.	4 3 4
3296-16	Nut - Lock	3 2 1	32144-10	Screw - Hex Washer Hd.	3 14 1
3296-29	Nut - Lock	1 8 2	32144-27	Screw	3 11 2
3296-29	Nut - Lock	4 9 5	32144-34	Screw - Hex. Hd.	6 9 2
3296-38	Nut - Lock	4 22 1	32144-34	Screw - Hex. Hd.	5 17 3
3296-42	Nut - Lock	3 8 4	32144-53	Screw - Acorn Slotted Hd.	1 22 2
3296-42	Nut - Lock	5 12 2	32144-89	Screw - Hex. Hd.	1 27 2
3296-42	Nut - Lock	2 32 2	32144-101	Screw - Machine	7 17 2
3296-56	Nut - Lock	5 7 12			

*Not Illustrated

