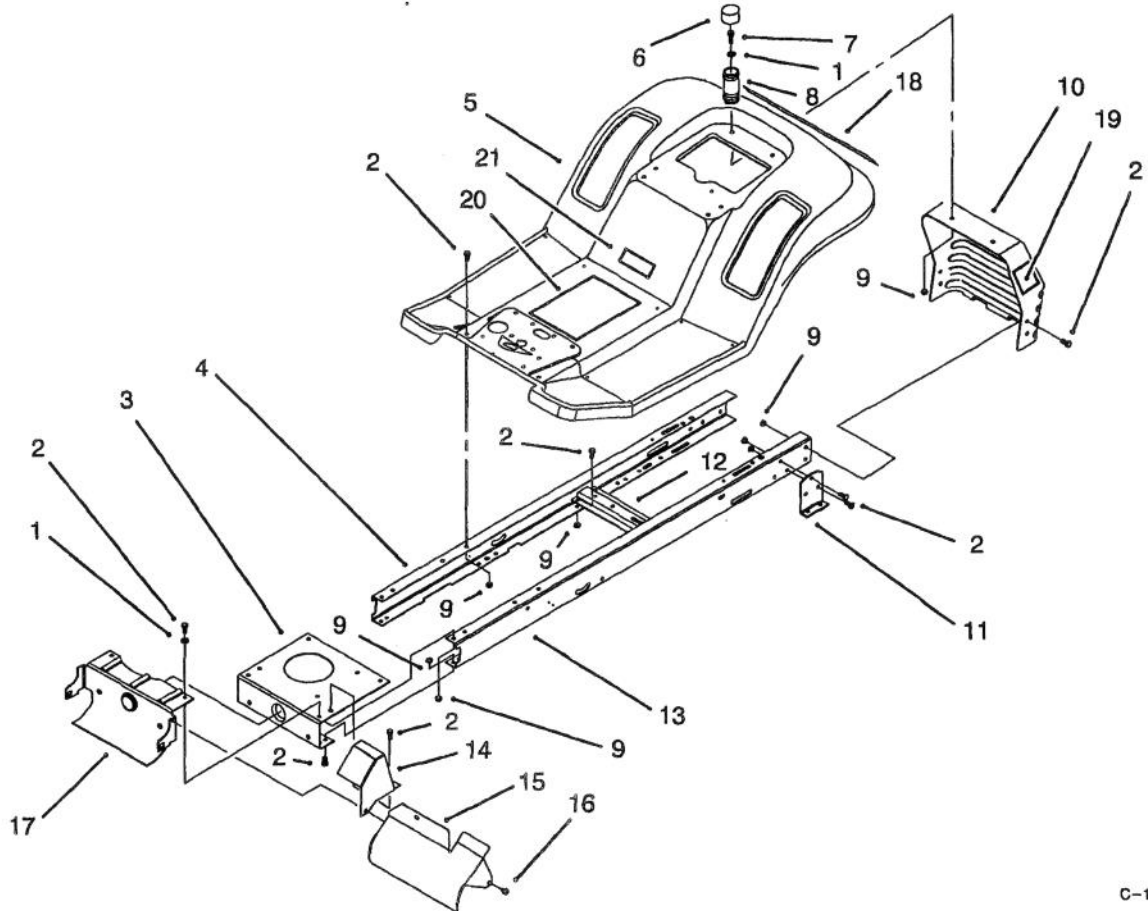




MODEL NO. 71191-5900001 & UP
 MODEL NO. 71213-5900001 & UP

**PARTS
 CATALOG**

1338HXL LAWN TRACTOR



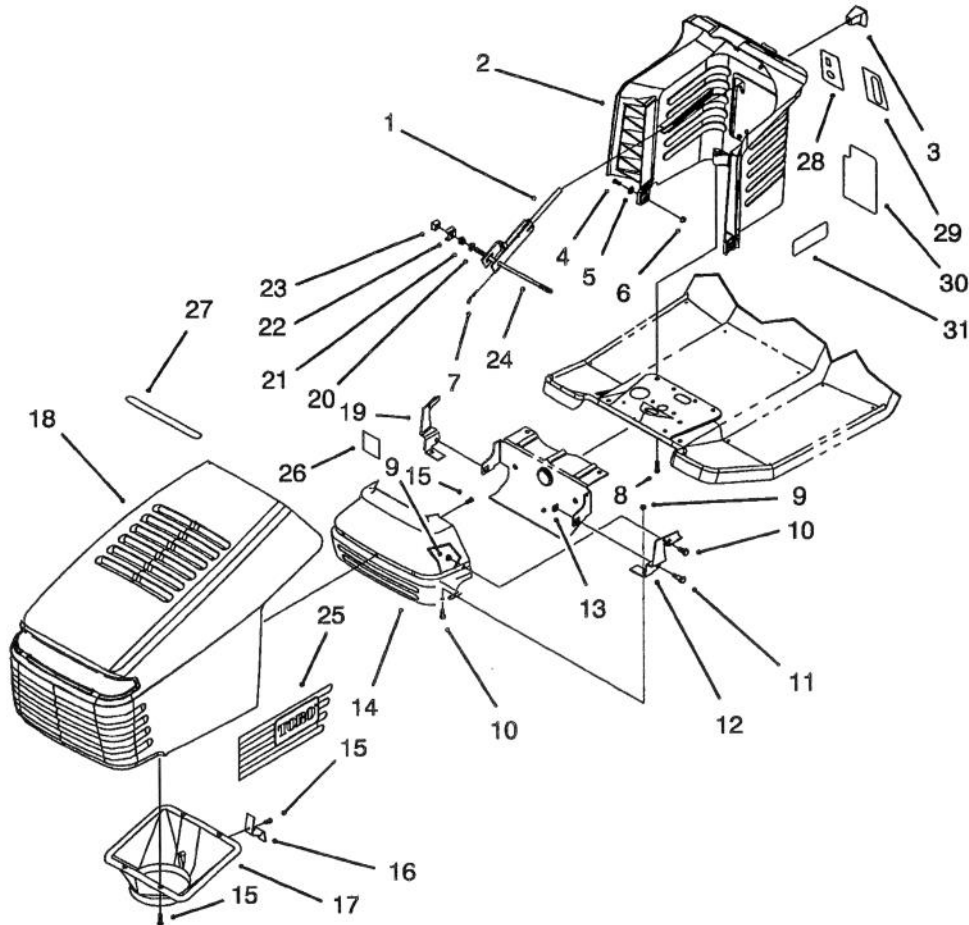
C-1470

FRAME ASSEMBLY

| Ref. No. | Part No. | Description | No. Used |
|----------|------------|--------------------------|----------|
| 1 | 3256-23 | Washer - Flat | 4 |
| 2 | 322-3 | Screw - Hex Hd. Cap | 22 |
| 3 | 88-4630 | Plate - Engine Mount | 1 |
| 4 | 88-4650 | Rail - R.H. Frame | 1 |
| 5 | 88-3840-01 | Body - Rear | 1 |
| 6 | 701178 | Cap - Protector | 2 |
| 7 | 322-5 | Screw - Hex Hd. Cap | 2 |
| 8 | 88-6220 | Spring - Compression | 2 |
| 9 | 3296-29 | Nut - Lock | 24 |
| 10 | 88-3940 | Panel - Rear Hitch | 1 |
| 11 | 88-5260 | Bracket - Transaxle Mtg. | 2 |
| 12 | 88-4620 | Bracket - Idler Pivot | 1 |
| 13 | 88-4660 | Rail - L.H. Frame | 1 |

| Ref. No. | Part No. | Description | No. Used |
|----------|----------|---|----------|
| 14 | 88-4960 | Shield - Exhaust Pipe | 1 |
| 15 | 88-6290 | Shield - Muffler | 1 |
| 16 | 32104-76 | Screw - Thread Tapping | 1 |
| 17 | 88-5120 | Support - Front Axle | 1 |
| 18 | 92-8789 | Decal - Rear Body | 1 |
| 19 | 92-8784 | Decal - Dump Valve | 1 |
| | | Hydro | 1 |
| 20 | 92-2486 | Decal - Instruction Hydro (Model No. 71191 Only) | 1 |
| * | 93-1366 | Decal - Instruction Hydro (Model No. 71213 Only) | 1 |
| 21 | 117242 | Decal - Made in USA (Model No. 71191 Only) | 1 |

* Not Illustrated



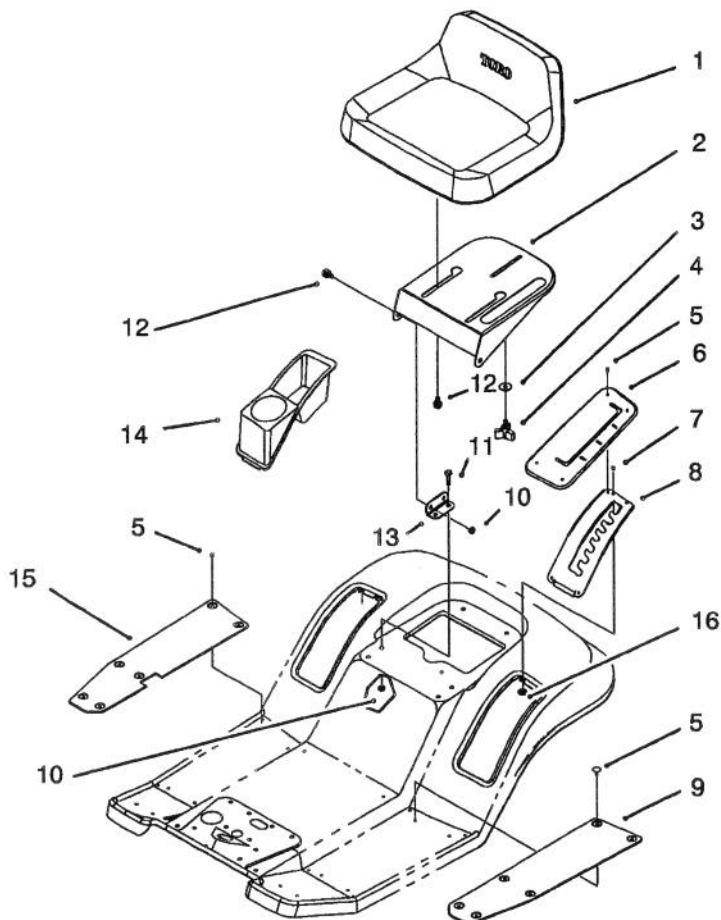
C-1308

HOOD ASSEMBLY

| Ref. No. | Part No. | Description | No. Used |
|----------|----------|---------------------------|----------|
| 1 | 88-5190 | Lever - Deck Engage | 1 |
| 2 | 93-0303 | Tower - Steering | 1 |
| 3 | 62-1292 | Knob - Engage Lever | 1 |
| 4 | 322-3 | Screw - Hex Hd. Cap | 2 |
| 5 | 3256-23 | Washer - Flat | 2 |
| 6 | 3296-29 | Nut - Lock | 2 |
| 7 | 3290-307 | Pin - Cotter | 2 |
| 8 | 46-8091 | Screw - Plastite | 2 |
| 9 | 3296-42 | Nut - Lock | 4 |
| 10 | 321-4 | Screw - Hex Hd. Cap | 4 |
| 11 | 28-0540 | Bolt - Shoulder | 2 |
| 12 | 88-6050 | Bracket - Hood Pivot L.H. | 1 |
| 13 | 3290-496 | Nut - Retained | 2 |
| 14 | 88-3930 | Shield - Heat | 1 |
| 15 | 46-8090 | Screw - Plastite | 8 |
| 16 | 88-4220 | Latch - Hood | 1 |
| 17 | 88-4050 | Duct - Hood Air | 1 |
| 18 | 92-8650 | Hood | 1 |
| 19 | 88-6040 | Bracket - Hood Pivot R.H. | 1 |
| 20 | 3256-24 | Washer - Flat | 2 |
| 21 | 32128-43 | Nut - Flange | 2 |

| Ref. No. | Part No. | Description | No. Used |
|----------|----------|---|----------|
| 22 | 88-4160 | Clamp - Pivot Rod | 2 |
| 23 | 88-4140 | Nut - Wedge | 2 |
| 24 | 88-4170 | Rod - Tower Pivot | 1 |
| 25 | 92-2467 | Decal - Hood R.H. | 1 |
| * | 92-2468 | Decal - Hood L.H. | 1 |
| 26 | 92-5782 | Patch - Heat Tape | 1 |
| 27 | 92-5748 | Decal - Air Duct | 1 |
| 28 | 92-2460 | Decal - Ignition/Lights (Model No. 71191 Only) | 1 |
| * | 92-5731 | Decal - Ignition/Light (Model No. 71213 Only) | 1 |
| 29 | 92-2461 | Decal - Throttle (Model No. 71191 Only) | 1 |
| * | 92-5730 | Decal - Throttle (Model No. 71213 Only) | 1 |
| 30 | 92-2462 | Decal - Deck Engage (Model No. 71191 Only) | 1 |
| * | 92-5733 | Decal - Deck Engage (Model No. 71213 Only) | 1 |
| 31 | 92-8786 | Decal - Tower 1338HXL | 2 |

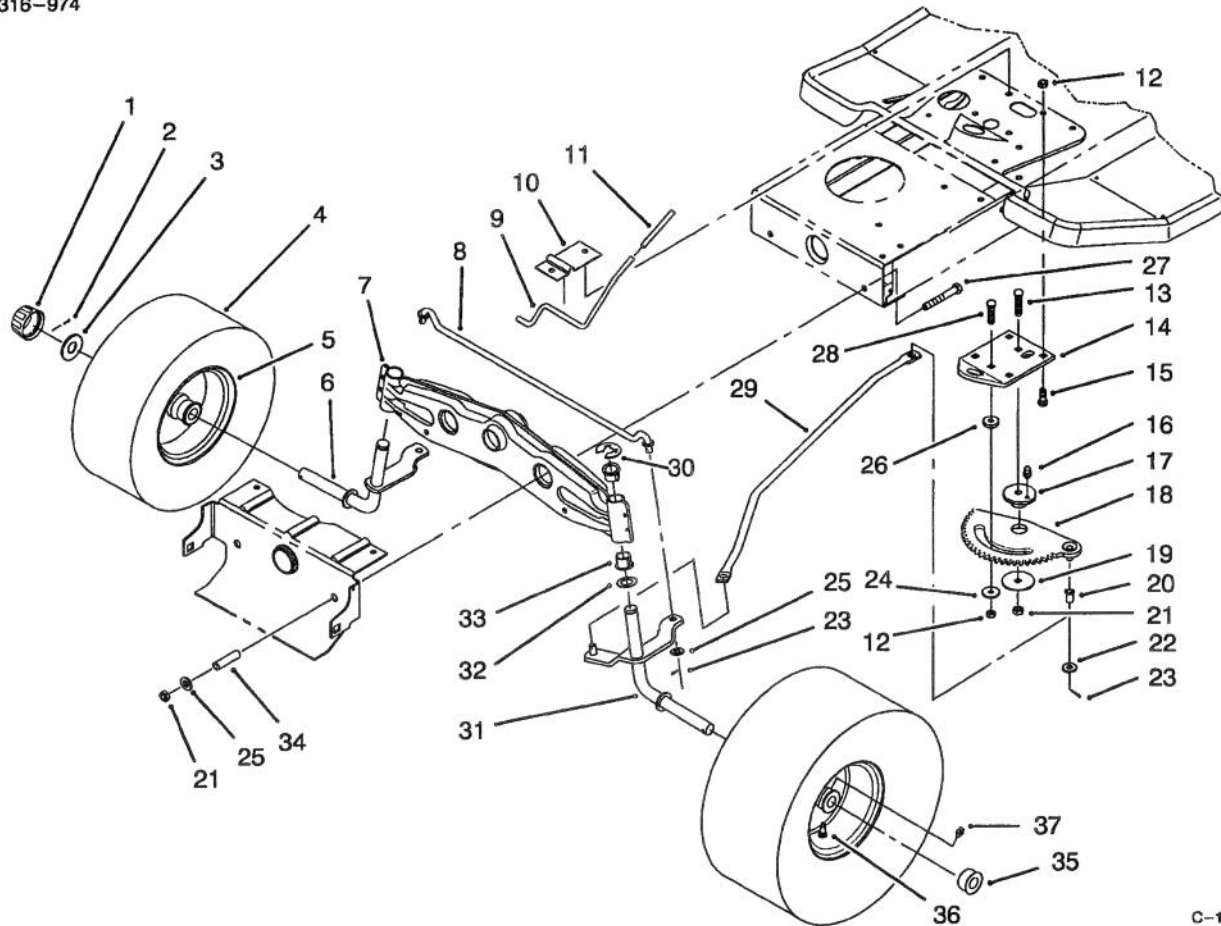
*Not Illustrated



C-1350

SEAT ASSEMBLY

| Ref. No. | Part No. | Description | No. Used | Ref. No. | Part No. | Description | No. Used |
|----------|----------|------------------|----------|----------|----------|----------------------|----------|
| 1 | 88-3950 | Seat | 1 | 9 | 88-5240 | Mat - L.H. Foot | 1 |
| 2 | 88-4910 | Support - Seat | 1 | 10 | 3296-29 | Nut - Lock | 6 |
| 3 | 5-4460 | Washer - Fender | 1 | 11 | 322-3 | Screw - Hex Hd. Cap | 4 |
| 4 | 92-9674 | Knob - Studded | 1 | 12 | 37-8770 | Bolt - Shoulder | 4 |
| 5 | 3290-479 | Panel - Fastener | 16 | 13 | 88-4820 | Bracket - Seat Hinge | 2 |
| 6 | 88-5170 | Cover - H.O.C. | 1 | 14 | 88-4990 | Tray - Fender | 1 |
| 7 | 3290-282 | Rivet - Pop | 2 | 15 | 88-5230 | Mat - R.H. Foot | 1 |
| 8 | 88-5030 | Gate - H.O.C. | 1 | 16 | 3269-26 | Washer - Backup | 2 |



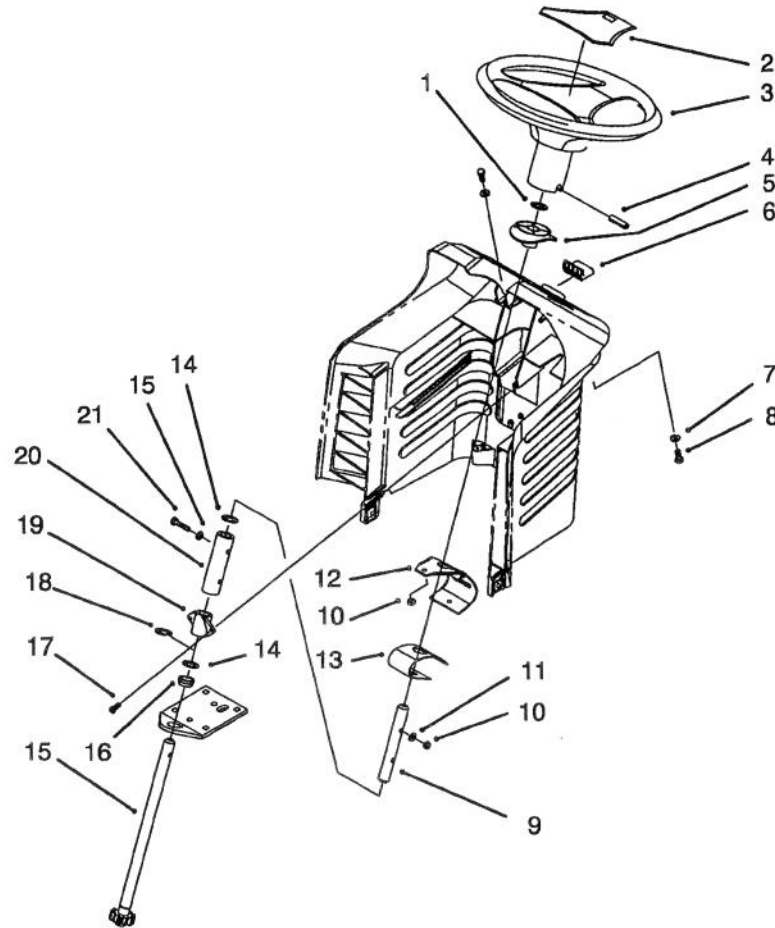
C-1302A

FRONT AXLE ASSEMBLY

| Ref. No. | Part No. | Description | No. Used |
|----------|----------|-------------------------|----------|
| 1 | 61-9780 | Cap - Hub | 2 |
| 2 | 3272-12 | Pin - Cotter | 2 |
| 3 | 28-2480 | Washer | 2 |
| 4 | 88-4070 | Tire - 13" | 2 |
| 5 | 88-4370 | Rim - Front Wheel | 2 |
| 6 | 92-7889 | Spindle - R.H. | 1 |
| 7 | 88-4460 | Axle - Front | 1 |
| 8 | 88-5380 | Rod - Steering Tie | 1 |
| 9 | 88-5510 | Rod - Parking Brake | 1 |
| 10 | 88-5520 | Bracket - Parking Brake | 1 |
| 11 | 88-0890 | Grip - Brake Rod | 1 |
| 12 | 3296-29 | Nut - Lock | 5 |
| 13 | 3231-4 | Bolt - Carriage | 1 |
| 14 | 88-5130 | Bracket - Steering Rack | 1 |
| 15 | 3230-1 | Bolt - Carriage | 4 |
| 16 | 302-26 | Fitting - Grease | 1 |
| 17 | 88-4670 | Bushing - Eccentric | 1 |
| 18 | 88-5200 | Rack - Steering | 1 |
| 19 | 111419 | Washer - Fender | 1 |
| 20 | 52-2891 | Bushing - Steering Link | 2 |
| 21 | 3296-39 | Nut - Lock | 3 |

| Ref. No. | Part No. | Description | No. Used |
|----------|----------|---|----------|
| 22 | 3256-25 | Washer - Flat | 2 |
| 23 | 3272-10 | Pin - Cotter | 4 |
| 24 | 5-4460 | Washer - Fender | 1 |
| 25 | 3256-24 | Washer - Flat | 4 |
| 26 | 88-5010 | Spacer - Steering Rack | 1 |
| 27 | 323-13 | Screw - Hex Hd. Cap | 2 |
| 28 | 3230-3 | Bolt - Carriage | 1 |
| 29 | 88-4830 | Link - Drag | 1 |
| 30 | 32151-48 | E-Ring | 2 |
| 31 | 92-7890 | Spindle - L.H. | 1 |
| 32 | 3-6498 | Washer - Thrust | 2 |
| 33 | 88-5800 | Bushing - Steering Spindle | 4 |
| 34 | 88-5470 | Spacer - Front Axle | 2 |
| 35 | 88-4400 | Bearing - Wheel | 4 |
| 36 | 232-27 | Valve Stem w/Cap | 2 |
| 37 | 302-5 | Fitting - Grease | 2 |
| * | 232-39 | Inner Tube (Optional) | 2 |
| * | 88-4280 | Wheel & Tire Assembly (Incl. Ref. #4 & 5) | 2 |

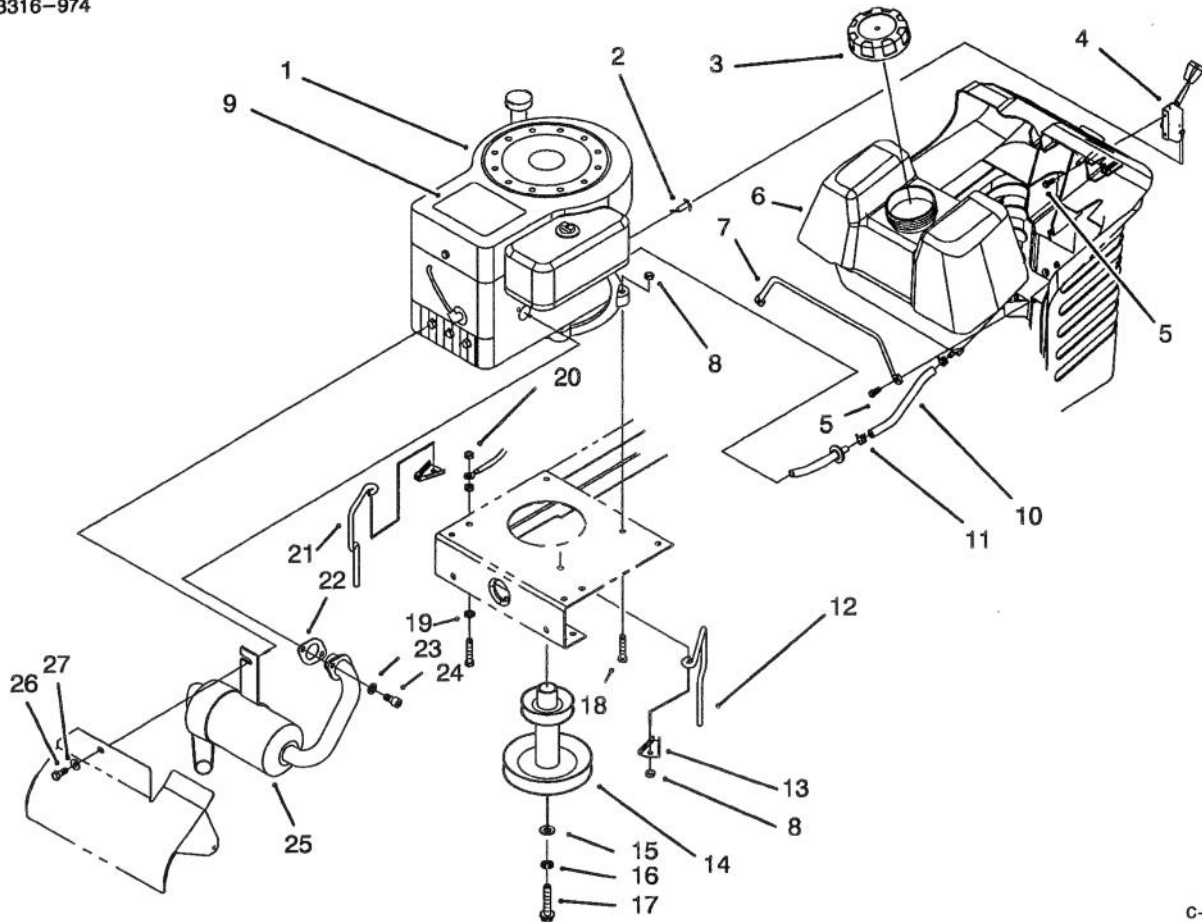
*Not Illustrated



C-1344

STEERING ASSEMBLY

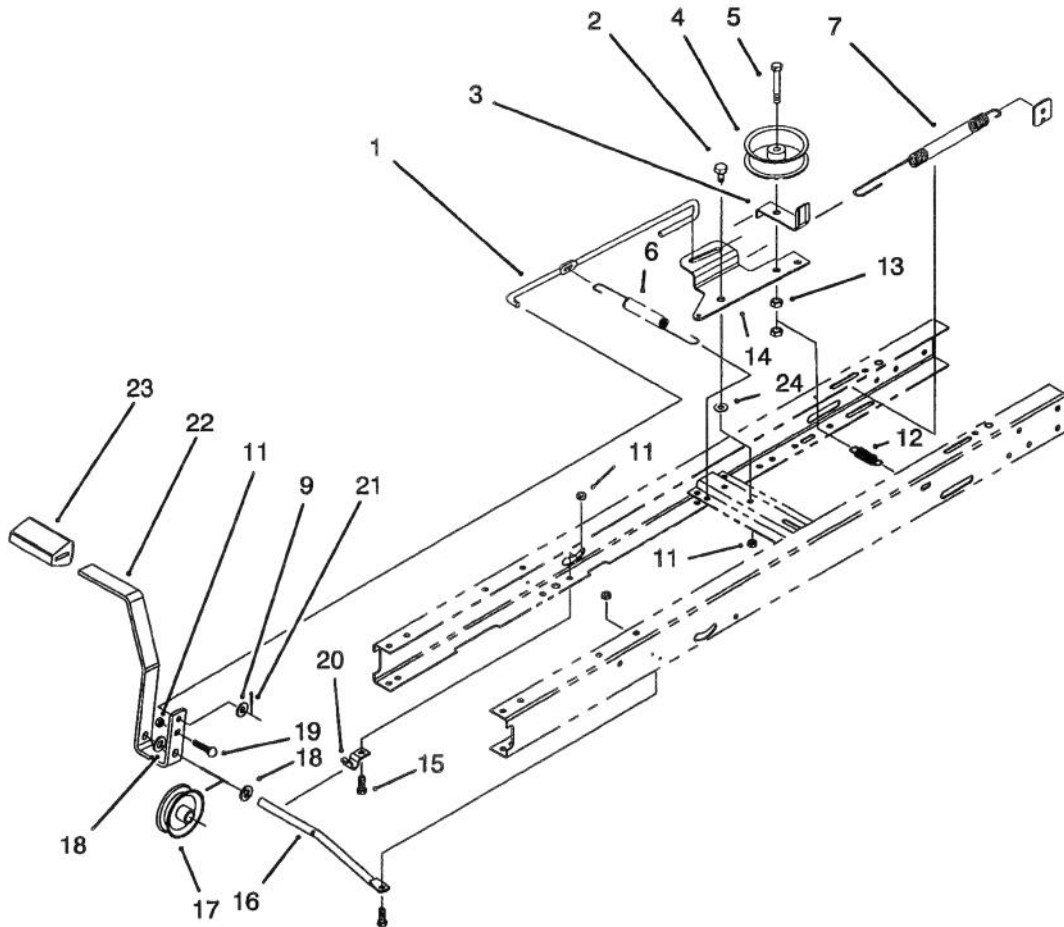
| Ref. No. | Part No. | Description | No. Used | Ref. No. | Part No. | Description | No. Used |
|----------|----------|-------------------------------------|----------|----------|----------|------------------------|----------|
| 1 | 32151-81 | Ring - Retaining | 1 | 11 | 3-7501 | Washer - Curved | 4 |
| 2 | 88-3870 | Cover - Steering Wheel | 1 | 12 | 88-5180 | Bracket - Backup | 1 |
| 3 | 88-3850 | Wheel - Steering (Incl. Ref. #2) | 1 | 13 | 88-4890 | Spring - Leaf | 1 |
| 4 | 32121-78 | Pin - Roll | 1 | 14 | 3-6498 | Washer - Thrust | 2 |
| 5 | 88-4190 | Bushing - Sliding | 1 | 15 | 88-6370 | Shaft - Steering Short | 1 |
| 6 | 88-4180 | Button - Release | 1 | 16 | 88-5150 | Bushing - Flange | 1 |
| 7 | 3256-22 | Washer - Flat | 2 | 17 | 27-0220 | Screw - Plastite | 2 |
| 8 | 321-4 | Screw - Hex Hd. Cap | 2 | 18 | 32151-48 | E-Ring | 1 |
| 9 | 88-6300 | Shaft - Steering Upper | 1 | 19 | 88-4210 | Bushing - Stationary | 1 |
| 10 | 3296-42 | Nut - Lock | 4 | 20 | 88-6090 | Coupling - Steering | 1 |
| | | | | 21 | 321-9 | Screw - Hex Hd. Cap | 2 |



C-1345

ENGINE ASSEMBLY

| Ref. No. | Part No. | Description | No. Used | Ref. No. | Part No. | Description | No. Used |
|----------|----------|------------------------|----------|----------|----------|--------------------------|----------|
| 1 | | Engine - 13 H.P. | 1 | 15 | 3256-25 | Washer - Flat | 1 |
| 2 | 88-4350 | Cable - Throttle | 1 | 16 | 3253-22 | Washer - Lock | 1 |
| 3 | 88-3980 | Cap - Gas | 1 | 17 | 26-0671 | Bolt - Blade | 1 |
| 4 | 88-4340 | Control - Throttle | 1 | 18 | 322-9 | Screw - Hex Hd. Cap | 4 |
| 5 | 27-0220 | Screw - Plastite | 4 | 19 | 3255-8 | Washer - Ext. Tooth Lock | 1 |
| 6 | 88-3880 | Tank - Gas | 1 | 20 | 32149-1 | Nut - Keps | 2 |
| 7 | 88-5920 | Rod - Gas Tank | 1 | 21 | 88-5840 | Guide - Belt R.H. | 1 |
| 8 | 3296-29 | Nut - Lock | 3 | 22 | 88-4410 | Gasket - Muffler | 1 |
| 9 | 92-8757 | Decal - Engine 13 H.P. | 1 | 23 | 3253-4 | Washer - Lock | 2 |
| 10 | 47-2963 | Line - Fuel | 1 | 24 | 3274-12 | Screw - Hex Soc. Hd. | 2 |
| 11 | 2412-98 | Clamp - Hose | 2 | 25 | 88-6480 | Muffler | 1 |
| 12 | 88-5830 | Guide - Belt L.H. | 1 | 26 | 321-4 | Screw - Hex Hd. Cap | 1 |
| 13 | 76-3820 | Anchor - Belt Guide | 2 | 27 | 3253-3 | Washer - Lock | 1 |
| 14 | 88-4850 | Pulley - Engine | 1 | | | | |

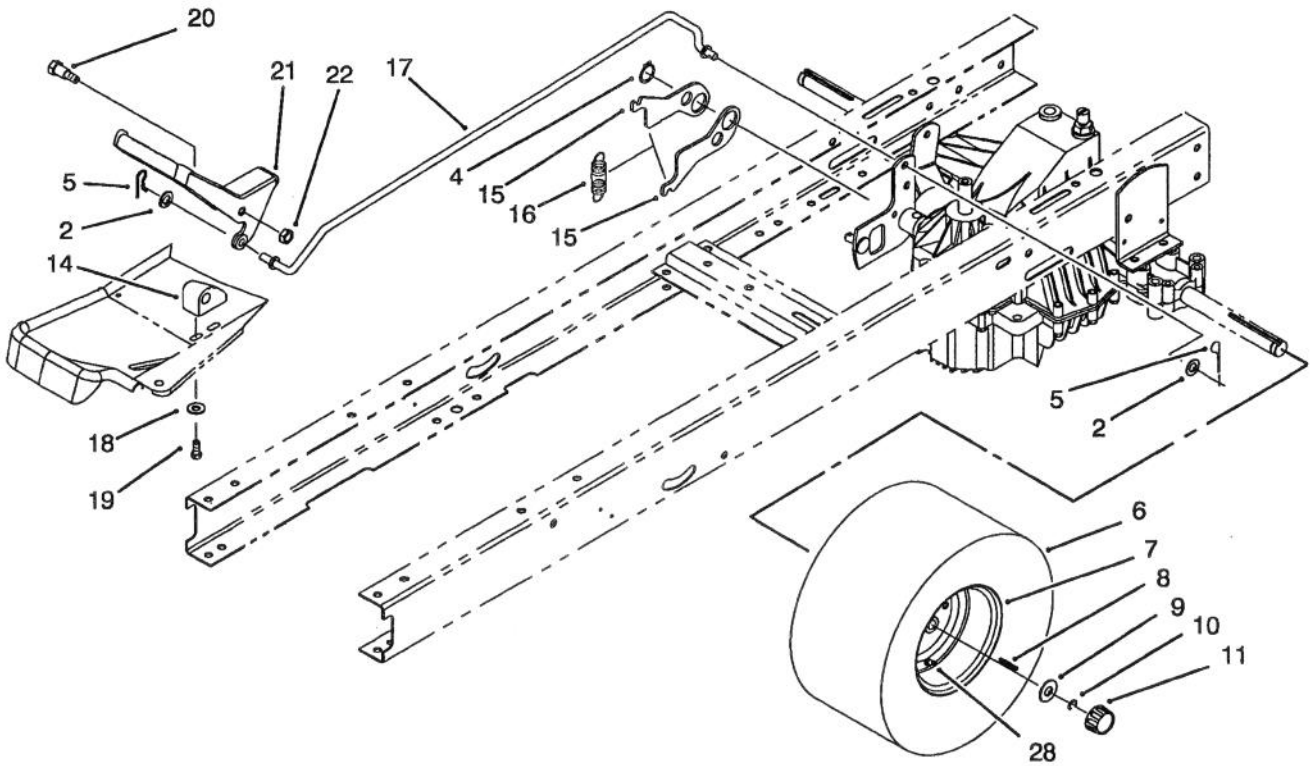


C-2101

CLUTCH ASSEMBLY

| Ref. No. | Part No. | Description | No. Used |
|----------|----------|-----------------------|----------|
| 1 | 88-5270 | Rod - Clutch/Brake | 1 |
| 2 | 37-8770 | Bolt - Shoulder | 1 |
| 3 | 88-5560 | Guide - Idler Belt | 1 |
| 4 | 88-5680 | Pulley - Flat Idler | 1 |
| 5 | 323-11 | Screw - Hex Hd. Cap | 1 |
| 6 | 27-8890 | Spring - Pedal Return | 1 |
| 7 | 88-6140 | Spring - Brake | 1 |
| 9 | 3256-23 | Washer - Flat | 1 |
| 11 | 3296-29 | Nut - Lock | 4 |
| 12 | 88-6330 | Spring - Extension | 1 |
| 13 | 3296-59 | Nut - Lock | 2 |

| Ref. No. | Part No. | Description | No. Used |
|----------|----------|----------------------|----------|
| 14 | 88-6070 | Arm - Idler | 1 |
| 15 | 322-3 | Screw - Hex Hd. Cap | 2 |
| 16 | 88-5500 | Rod - Pedal Pivot | 1 |
| 17 | 88-4700 | Pulley - Cable | 1 |
| 18 | 3256-26 | Washer - Flat | 2 |
| 19 | 3230-3 | Bolt - Carriage | 1 |
| 20 | 88-4810 | Clamp - Shift Pivot | 1 |
| 21 | 3272-10 | Pin - Cotter | 1 |
| 22 | 88-5000 | Pedal - Clutch/Brake | 1 |
| 23 | 65-2920 | Pad - Pedal | 1 |
| 24 | 5-4460 | Washer - Fender | 1 |



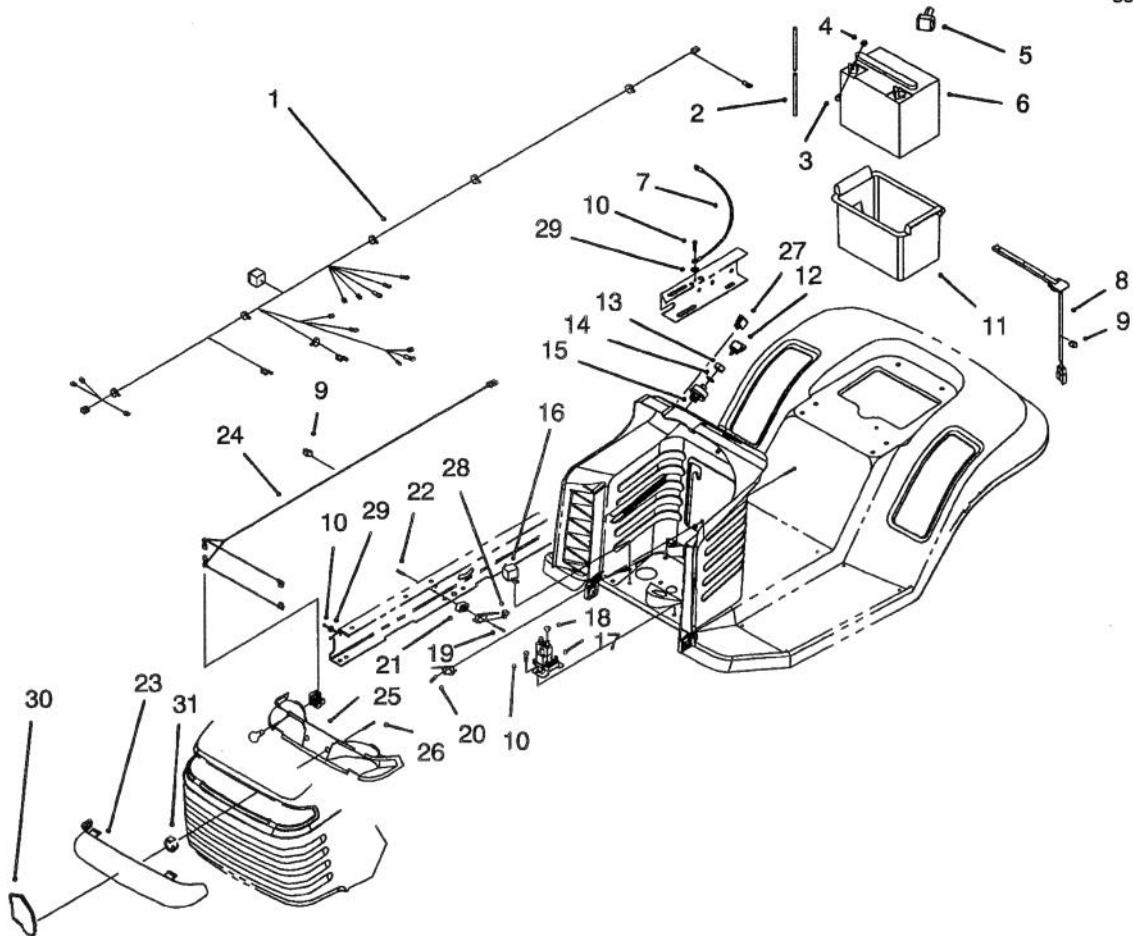
C-1824A

SPEED CONTROL & REAR WHEEL ASSEMBLY

| Ref. No. | Part No. | Description | No. Used |
|----------|----------|---------------------------|----------|
| 2 | 3256-23 | Washer - Flat | 2 |
| 4 | 32151-83 | Ring - External Retaining | 1 |
| 5 | 3290-307 | Pin - Cotter Hair | 2 |
| 6 | 88-4090 | Tire | 2 |
| 7 | 83-4390 | Rim | 2 |
| 8 | 7-0036 | Key - Square | 2 |
| 9 | 28-2480 | Washer | 2 |
| 10 | 32151-48 | E-Ring | 2 |
| 11 | 61-9780 | Cap - Hub | 2 |
| 14 | 88-4690 | Block - Pivot | 1 |
| 15 | 88-5610 | Lever - Neutral Return | 2 |

| Ref. No. | Part No. | Description | No. Used |
|----------|----------|--|----------|
| 16 | 92-7305 | Spring - Extension | 1 |
| 17 | 92-9793 | Rod - Speed Control | 1 |
| 18 | 3256-22 | Washer - Flat | 2 |
| 19 | 46-8090 | Screw - Plastite | 2 |
| 20 | 23-0310 | Bolt - Shoulder | 1 |
| 21 | 88-6030 | Pedal - Speed Control | 1 |
| 22 | 3296-59 | Nut - Lock | 1 |
| 28 | 232-27 | Valve Stem w/Cap | 2 |
| * | 232-41 | Inner Tube (Optional) | 2 |
| * | 88-4300 | Wheel & Tire Assembly (Incl. Ref. #6 & 7) | 1 |

*Not Illustrated

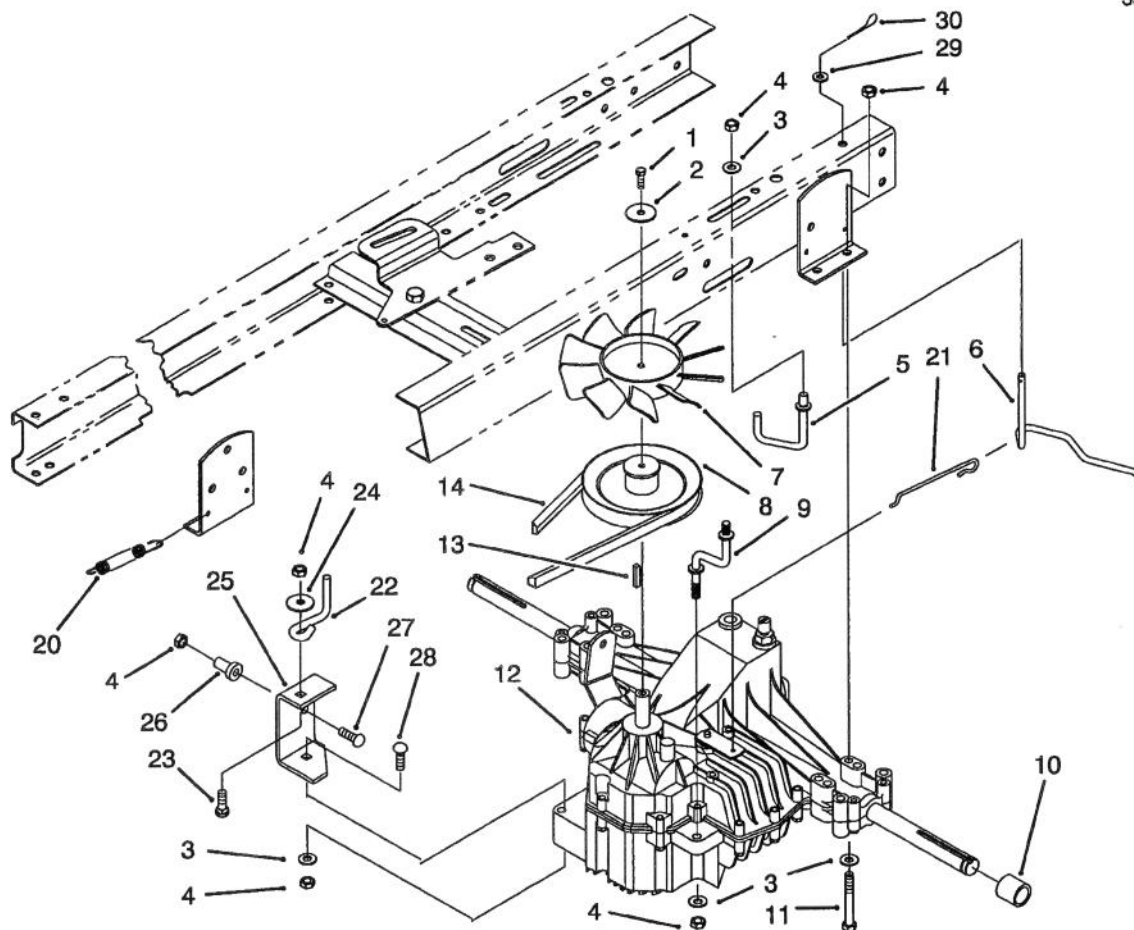


C-1342

ELECTRICAL ASSEMBLY

| Ref. No. | Part No. | Description | No. Used |
|----------|----------|---|----------|
| 1 | 88-4310 | Harness - Wire | 1 |
| 2 | 56-2540 | Vent - Tube | 1 |
| 3 | 321-4 | Screw - Hex Hd. Cap | 2 |
| 4 | 32103-22 | Nut - Wing | 2 |
| 5 | 28-8080 | Boot - Battery Terminal | 1 |
| 6 | 80-2600 | Battery - 7 Plate | 1 |
| 7 | 44-8110 | Cable - Battery Negative | 1 |
| 8 | 38-1420 | Switch - Seat | 1 |
| 9 | 702366 | Clip - Wire Retainer | 3 |
| 10 | 32144-4 | Screw - Hex Hd. Thr'd Forming | 4 |
| 11 | 88-4040 | Box - Battery | 1 |
| 12 | 63-8360 | Key - Ignition | 1 |
| 13 | 218-461 | Nut - Hex | 1 |
| 14 | 3254-5 | Washer - Lock | 1 |
| 15 | 88-9830 | Switch - Ignition (Incl. Ref. #13 & 14) | 1 |

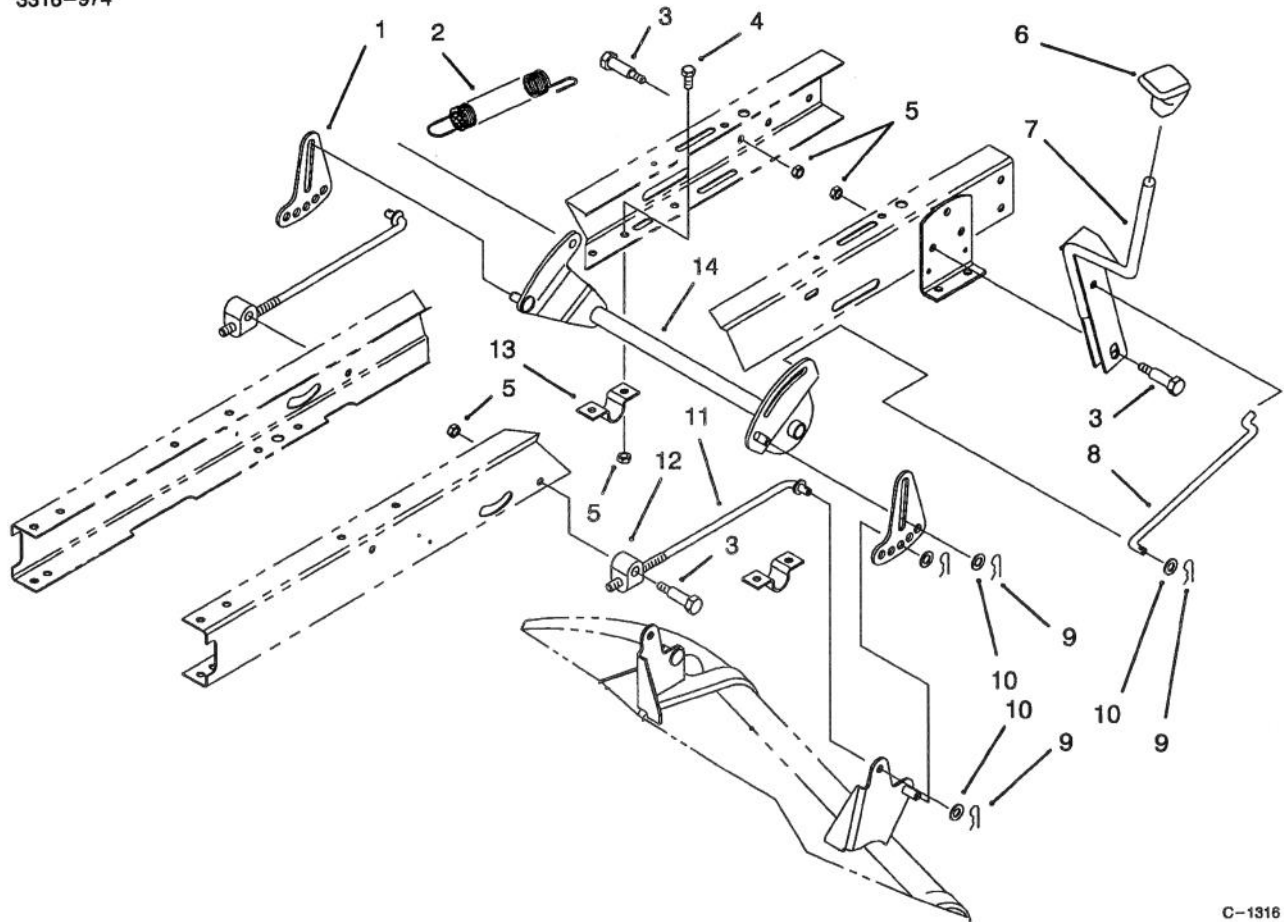
| Ref. No. | Part No. | Description | No. Used |
|----------|----------|----------------------|----------|
| 16 | 116397 | Relay | 1 |
| 17 | 92-9845 | Solenoid | 1 |
| 18 | 32149-2 | Nut - Keps | 2 |
| 19 | 910478 | Screw - Phillips Hd. | 4 |
| 20 | 88-9932 | Switch - Micro | 2 |
| 21 | 88-4880 | Spacer - Microswitch | 1 |
| 22 | 3290-354 | Speednut | 2 |
| 23 | 88-3960 | Lens - Headlights | 1 |
| 24 | 88-4320 | Harness - Wire | 1 |
| 25 | 88-3970 | Reflector & Lamp | 1 |
| 26 | 32144-32 | Screw - Plastite | 2 |
| 27 | 92-8875 | Switch - Rocker | 1 |
| 28 | 93-3240 | Seal - Plunger | 1 |
| 29 | 3255-7 | Lockwasher | 2 |
| 30 | 80-2240 | Plate - Name Grille | 1 |
| 31 | 3290-299 | Nut - Tinnerman | 1 |



C-1825

TRANSAXLE ASSEMBLY

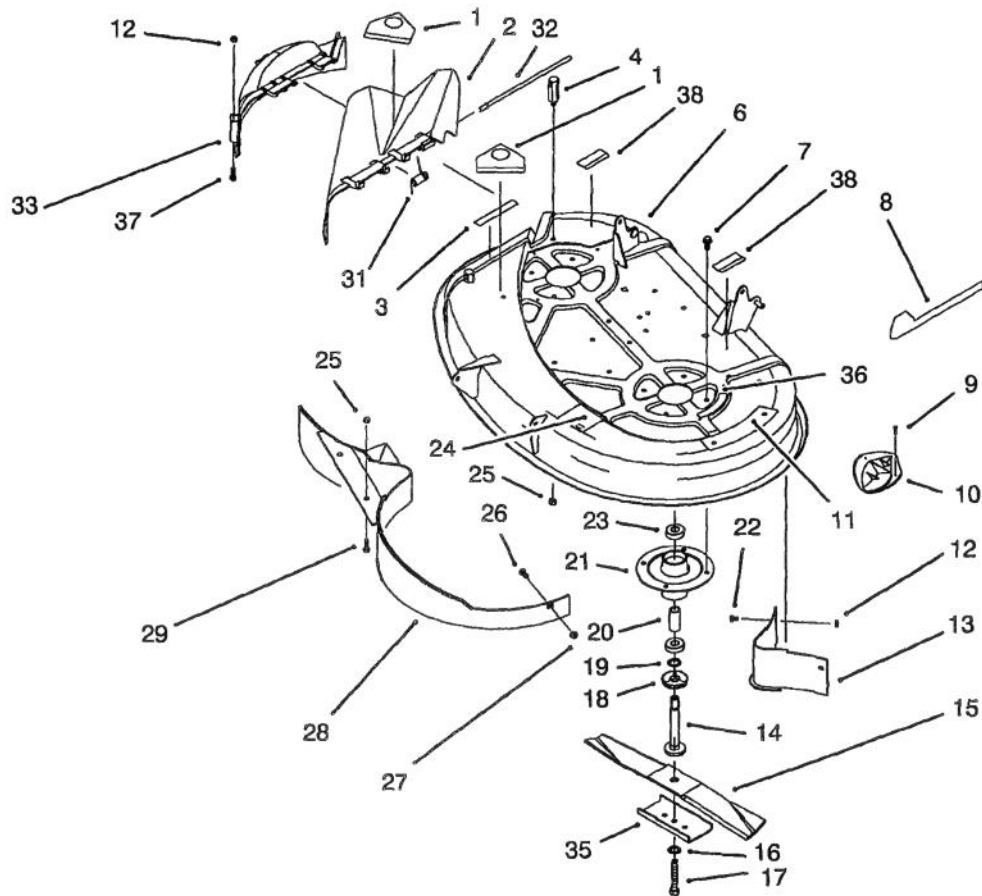
| Ref. No. | Part No. | Description | No. Used | Ref. No. | Part No. | Description | No. Used |
|----------|----------|--------------------------|----------|----------|----------|-------------------------|----------|
| 1 | 48-7620 | Screw - Hex Hd. Cap | 1 | 14 | 88-6280 | V-Belt - Transaxle | 1 |
| 2 | 3256-58 | Washer - Flat | 1 | 20 | 26-6701 | Spring - Brake | 1 |
| 3 | 3256-23 | Washer - Flat | 8 | 21 | 92-8856 | Wire - Bypass | 1 |
| 4 | 3296-29 | Nut - Lock | 10 | 22 | 88-5460 | Guide - Trans. Belt | 1 |
| 5 | 88-5960 | Guide - Trans. Belt L.H. | 1 | 23 | 3230-2 | Bolt - Carriage | 1 |
| 6 | 92-8857 | Lever - Bypass | 1 | 24 | 5-4460 | Washer - Fender | 1 |
| 7 | 115271 | Fan - Hydro | 1 | 25 | 92-6013 | Bracket - Speed Control | 1 |
| 8 | 88-6180 | Pulley - Transaxle | 1 | 26 | 65-5080 | Bushing - Flanged | 1 |
| 9 | 88-5620 | Strap - Torque | 1 | 27 | 3230-5 | Bolt - Carriage | 1 |
| 10 | 88-5360 | Spacer - Wheel | 2 | 28 | 3230-7 | Bolt - Carriage | 1 |
| 11 | 322-12 | Screw - Hex Hd. Cap | 4 | 29 | 3256-22 | Washer - Flat | 1 |
| 12 | 92-9790 | Transaxle | 1 | 30 | 3290-307 | Pin - Hair Cotter | 1 |
| 13 | 80-6090 | Key - Square | 1 | | | | |



C-1316

HEIGHT OF CUT ASSEMBLY

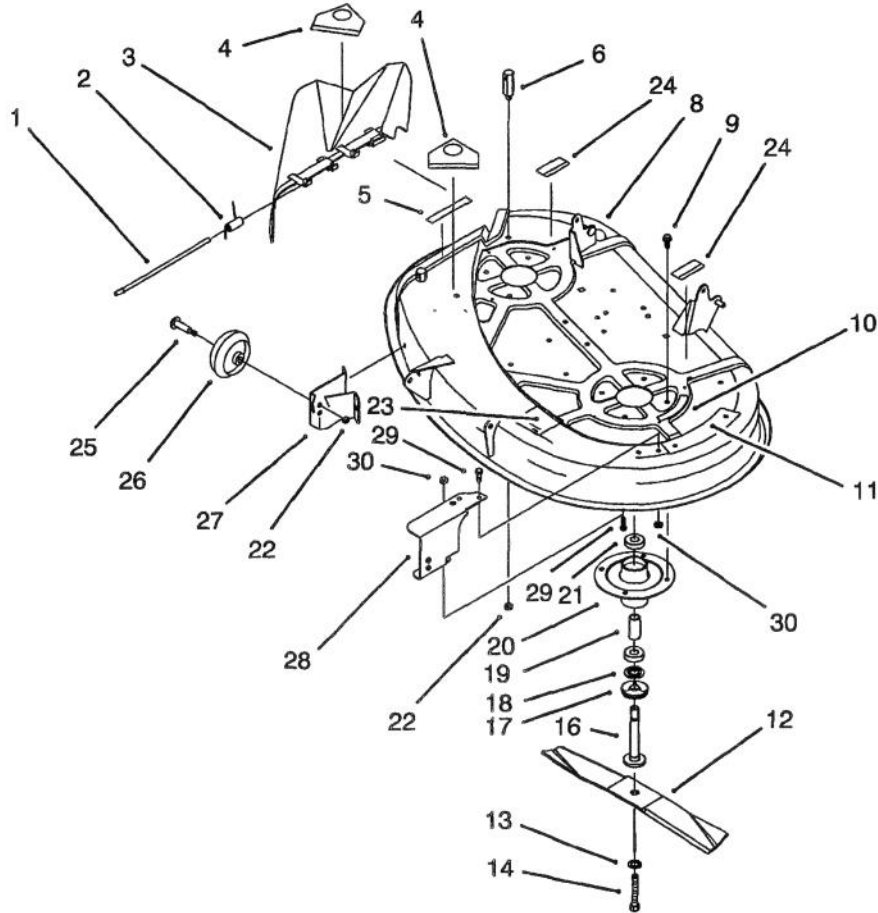
| Ref. No. | Part No. | Description | No. Used | Ref. No. | Part No. | Description | No. Used |
|----------|----------|-------------------------|----------|----------|----------|------------------------|----------|
| 1 | 88-5570 | Link - Adjusting H.O.C. | 2 | 8 | 88-5900 | Link - H.O.C. | 1 |
| 2 | 88-6460 | Spring - Extension | 1 | 9 | 3290-307 | Pin - Hair Cotter | 7 |
| 3 | 7-0030 | Bolt - Shoulder | 4 | 10 | 3256-24 | Washer - Flat | 7 |
| 4 | 322-3 | Screw - Hex Hd. Cap | 4 | 11 | 88-5450 | Rod - Hanger Rear | 2 |
| 5 | 3296-29 | Nut - Lock | 8 | 12 | 88-4230 | Trunnion - H.O.C. Rear | 2 |
| 6 | 62-1292 | Knob - Shift | 1 | 13 | 88-4730 | Clamp - H.O.C. Pivot | 2 |
| 7 | 88-5310 | Lever - H.O.C. | 1 | 14 | 88-5110 | Pivot - H.O.C. | 1 |



C-1320

HOUSING & SPINDLE ASSEMBLY (38" CUTTING UNIT) (MODEL NO. 71191 ONLY)

| Ref. No. | Part No. | Description | No. Used | Ref. No. | Part No. | Description | No. Used |
|----------|------------|---------------------------------------|----------|----------|----------|------------------------|----------|
| 1 | 93-1122 | Decal - Danger | 2 | 19 | 80-4380 | Spacer - Hardened | 2 |
| 2 | 93-0317 | Deflector Assembly (Incl. Ref. #1) | 1 | 20 | 62-3661 | Spacer - Bearing | 2 |
| 3 | 68-3650 | Decal - Deflector Danger | 1 | 21 | 88-4510 | Housing - Spindle | 2 |
| 4 | 57-4360 | Post - Rear Pivot | 1 | 22 | 321-4 | Screw - Hex Hd. Cap | 2 |
| 6 | 88-5780-01 | Deck - 38" | 1 | 23 | 38-7820 | Bearing - Spindle | 4 |
| 7 | 32144-41 | Screw - Taptite | 8 | 24 | 117137 | Decal - Belt Guide | 1 |
| 8 | 92-9520 | Decal - Recycler | 1 | 25 | 3296-39 | Nut - Lock | 3 |
| 9 | 32144-111 | Screw - Plastite | 8 | 26 | 3230-1 | Bolt - Carriage | 1 |
| 10 | 76-2160 | Plate - Kicker | 4 | 27 | 3296-29 | Nut - Lock | 1 |
| 11 | 79-3140 | Decal - Danger | 1 | 28 | 79-1600 | Baffle - Recycler | 1 |
| 12 | 3296-42 | Nut - Lock | 4 | 29 | 323-5 | Screw - Hex Hd. Cap | 2 |
| 13 | 79-1640 | Baffle - Rear | 1 | 31 | 57-6950 | Spring - Torsion | 1 |
| 14 | 80-4341 | Shaft - Spindle | 2 | 32 | 57-4380 | Rod - Deflector Hinge | 1 |
| 15 | 79-3061 | Blade - Recycler | 2 | 33 | 88-4430 | Cover - Recycler | 1 |
| 16 | 3290-465 | Washer - Belleville | 2 | 35 | 80-0510 | Stiffener - Blade | 2 |
| 17 | 26-0671 | Bolt - Blade | 2 | 36 | 68-3660 | Decal - Shield Danger | 1 |
| 18 | 80-4360 | Shield - Bearing | 2 | 37 | 321-14 | Screw - Hex Hd. Cap | 2 |
| | | | | 38 | 55-4300 | Decal - Spring Caution | 2 |

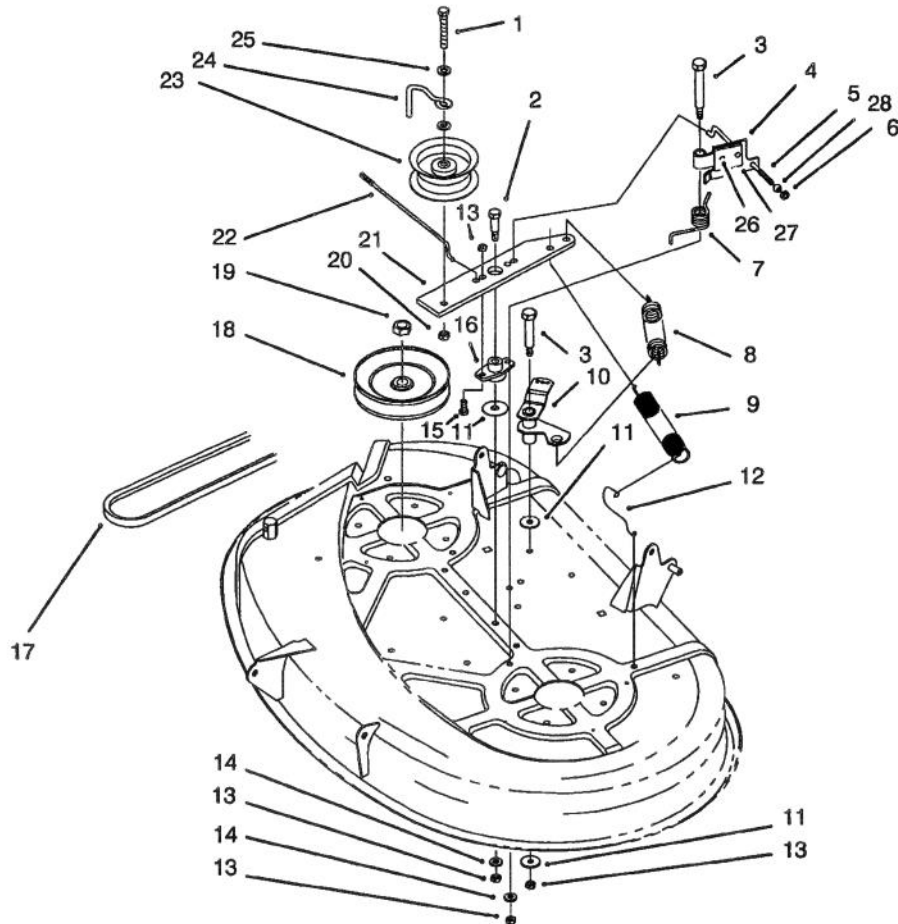


C-1346

HOUSING & SPINDLE ASSEMBLY (38" CUTTING UNIT) (MODEL NO. 71213 ONLY)

| Ref. No. | Part No. | Description | No. Used |
|----------|------------|---------------------------------------|----------|
| 1 | 57-4380 | Rod - Deflector Hinge | 1 |
| 2 | 57-6950 | Spring - Torsion | 1 |
| 3 | 93-0317 | Deflector Assembly (Incl. Ref. #4) | 1 |
| 4 | 93-1122 | Decal - Danger | 2 |
| 5 | 68-3650 | Decal - Deflector Danger | 1 |
| 6 | 57-4360 | Post - Rear Pivot | 1 |
| 8 | 88-5780-01 | Deck - 38" | 1 |
| 9 | 32144-41 | Screw - Taptite | 8 |
| 10 | 68-3660 | Decal - Shield Danger | 1 |
| 11 | 79-3140 | Decal - Danger | 1 |
| 12 | 57-4700 | Blade - Side Discharge | 2 |
| 13 | 3290-465 | Washer - Belleville | 2 |
| 14 | 26-0671 | Bolt - Blade | 2 |
| 16 | 80-4341 | Shaft - Spindle | 2 |
| 17 | 80-4360 | Shield - Bearing | 2 |

| Ref. No. | Part No. | Description | No. Used |
|----------|----------|------------------------------|----------|
| 18 | 80-4380 | Spacer - Hardened | 2 |
| 19 | 62-3661 | Spacer - Bearing | 2 |
| 20 | 88-4510 | Housing - Spindle | 2 |
| 21 | 38-7820 | Bearing - Spindle | 4 |
| 22 | 3296-39 | Nut - Lock | 3 |
| 23 | 117137 | Decal - Belt Guide | 1 |
| 24 | 55-4300 | Decal - Spring Caution | 2 |
| 25 | 56-6591 | Bolt - Wheel | 2 |
| 26 | 701756 | Wheel - Deck | 2 |
| 27 | 88-5740 | Bracket - Deck Wheel R.H. | 1 |
| 28 | 88-5750 | Bracket - Deck Wheel L.H. | 1 |
| 29 | 322-3 | Screw - Hex Hd. Cap | 5 |
| 30 | 3296-29 | Nut - Lock | 5 |

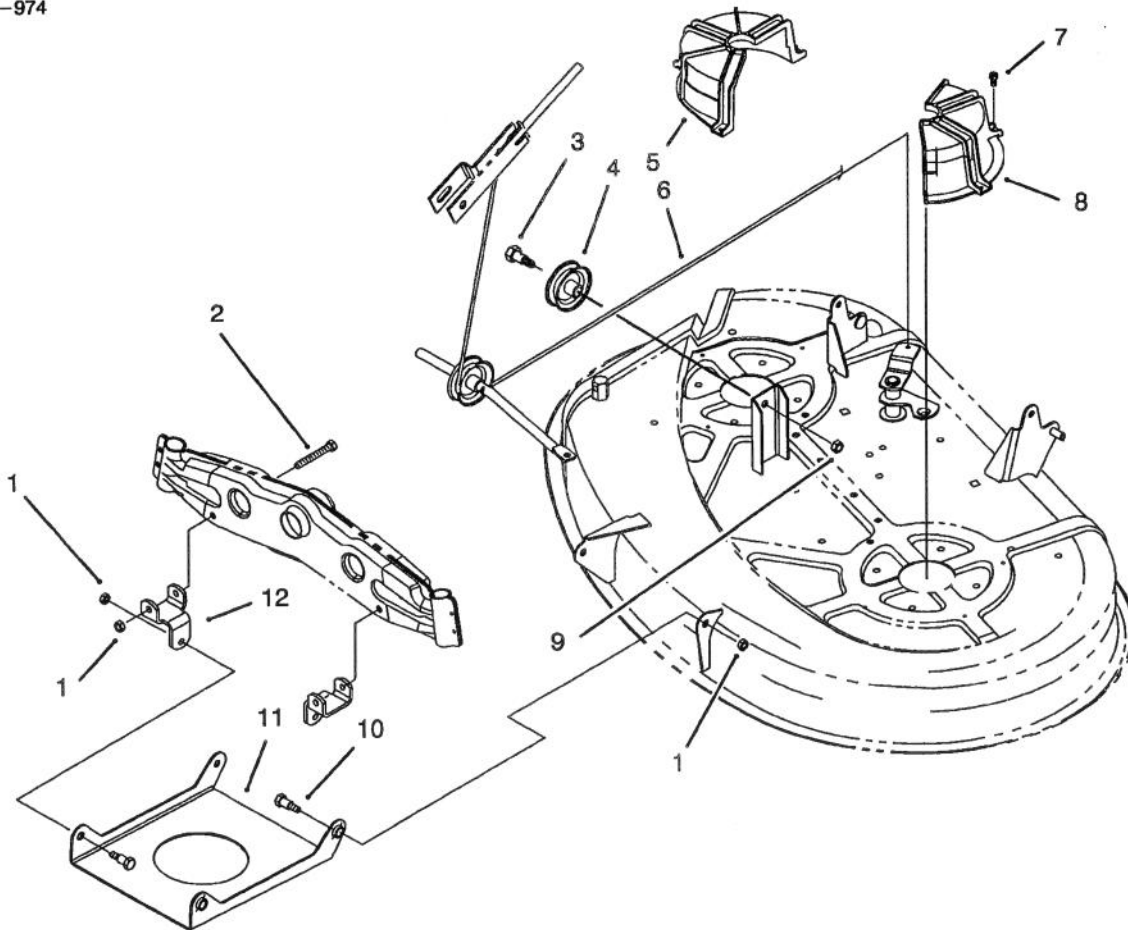


C-1347

BRAKE ASSEMBLY (38" CUTTING UNIT)

| Ref. No. | Part No. | Description | No. Used |
|----------|----------|---------------------------------------|----------|
| 1 | 323-12 | Screw - Hex Hd. Cap | 1 |
| 2 | 7-0030 | Bolt - Shoulder | 1 |
| 3 | 88-4590 | Bolt - Shoulder | 3 |
| 4 | 88-6100 | Brake - Deck (Incl. Ref. #26 & 27) | 2 |
| 5 | 88-5550 | Rod - Deck Brake L.H. | 1 |
| 6 | 3296-42 | Nut - Lock | 2 |
| 7 | 88-5910 | Spring - Torsion | 2 |
| 8 | 88-6130 | Spring - Deck Engage | 1 |
| 9 | 92-8934 | Spring - Extension | 1 |
| 10 | 88-5390 | Bellcrank | 1 |
| 11 | 3256-68 | Washer - Fender | 3 |
| 12 | 88-5970 | Hook - Spring Return | 1 |
| 13 | 3296-29 | Nut - Lock | 6 |
| 14 | 3256-23 | Washer - Flat | 3 |

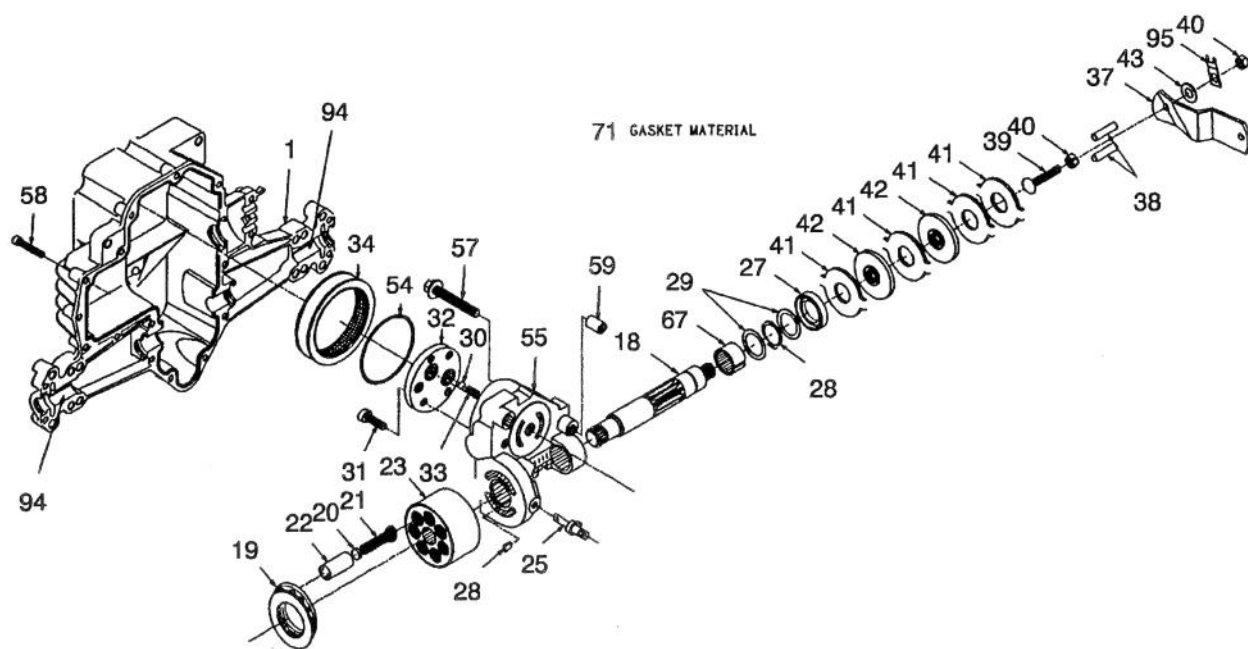
| Ref. No. | Part No. | Description | No. Used |
|----------|----------|-----------------------|----------|
| 15 | 322-5 | Screw - Hex Hd. Cap | 2 |
| 16 | 88-4980 | Bushing - Idler Arm | 1 |
| 17 | 88-6250 | V-Belt - Deck | 1 |
| 18 | 88-5330 | Pulley - Deck | 2 |
| 19 | 3219-6 | Nut - Lock | 2 |
| 20 | 3296-39 | Nut - Lock | 1 |
| 21 | 88-4870 | Arm - Idler | 1 |
| 22 | 88-5540 | Rod - Deck Brake R.H. | 1 |
| 23 | 88-5630 | Pulley - Idler | 1 |
| 24 | 88-5070 | Guide - Idler Belt | 1 |
| 25 | 3256-24 | Washer - Flat | 2 |
| 26 | 3290-282 | Rivet - Pop | 4 |
| 27 | 56-9830 | Pad - Brake | 2 |
| 28 | 67-0710 | Ball - Swivel | 2 |



C-1348

CABLE & COVER ASSEMBLY (38" CUTTING UNIT)

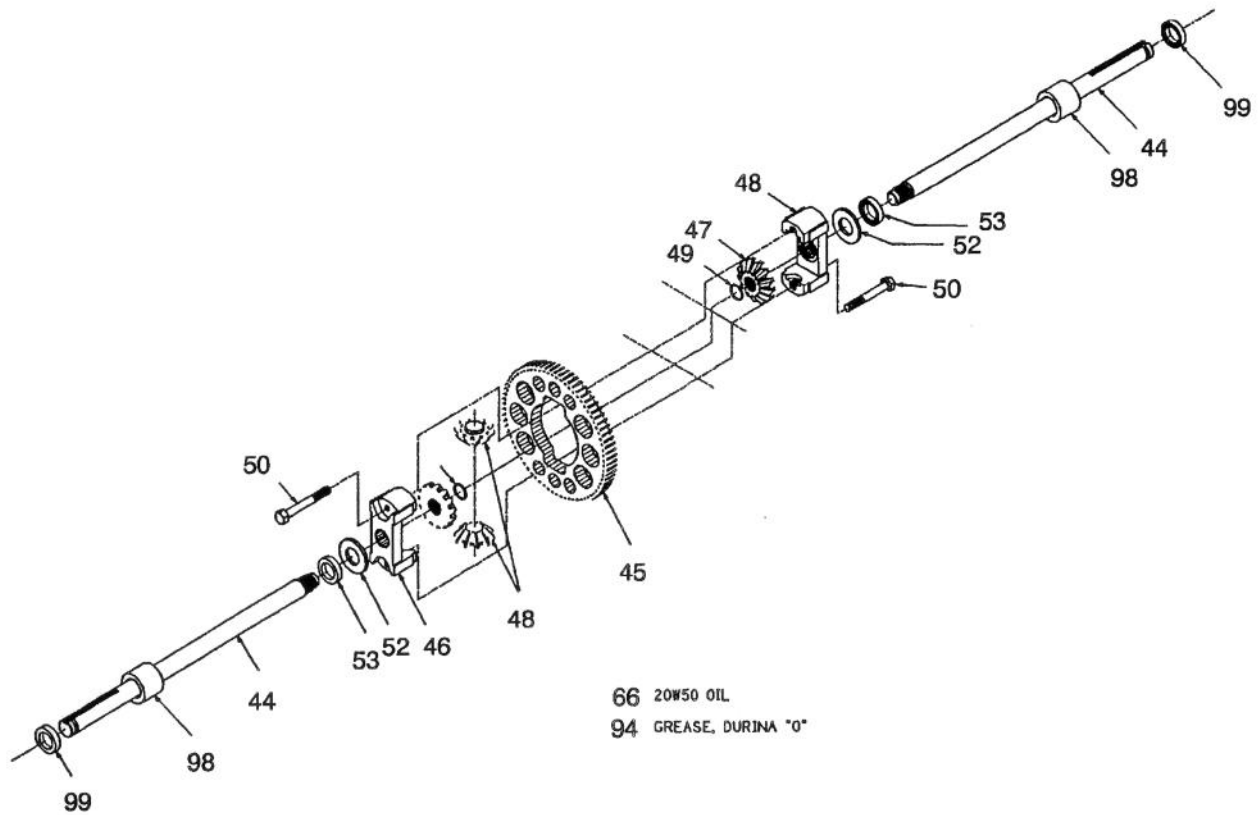
| Ref. No. | Part No. | Description | No. Used | Ref. No. | Part No. | Description | No. Used |
|----------|----------|------------------------|----------|----------|----------|--------------------------------|----------|
| 1 | 3296-29 | Nut - Lock | 6 | 8 | 88-4030 | Guide - Deck Belt L.H. | 1 |
| 2 | 322-12 | Screw - Hex Hd. Cap | 2 | 9 | 3296-39 | Nut - Lock | 1 |
| 3 | 23-0310 | Bolt - Shoulder | 1 | 10 | 28-0540 | Bolt - Shoulder | 4 |
| 4 | 88-4700 | Pulley - Cable | 1 | 11 | 88-4900 | Pan - Front Deck Suspension | 1 |
| 5 | 88-4020 | Guide - Deck Belt R.H. | 1 | 12 | 88-4640 | Bracket - Deck Suspension | 2 |
| 6 | 88-6410 | Cable - Deck Engage | 1 | | | | |
| 7 | 32104-76 | Screw - Thread Cutting | 5 | | | | |



C-1354

HYDROGEAR TRANSAXLE MODEL NO. 321-0500

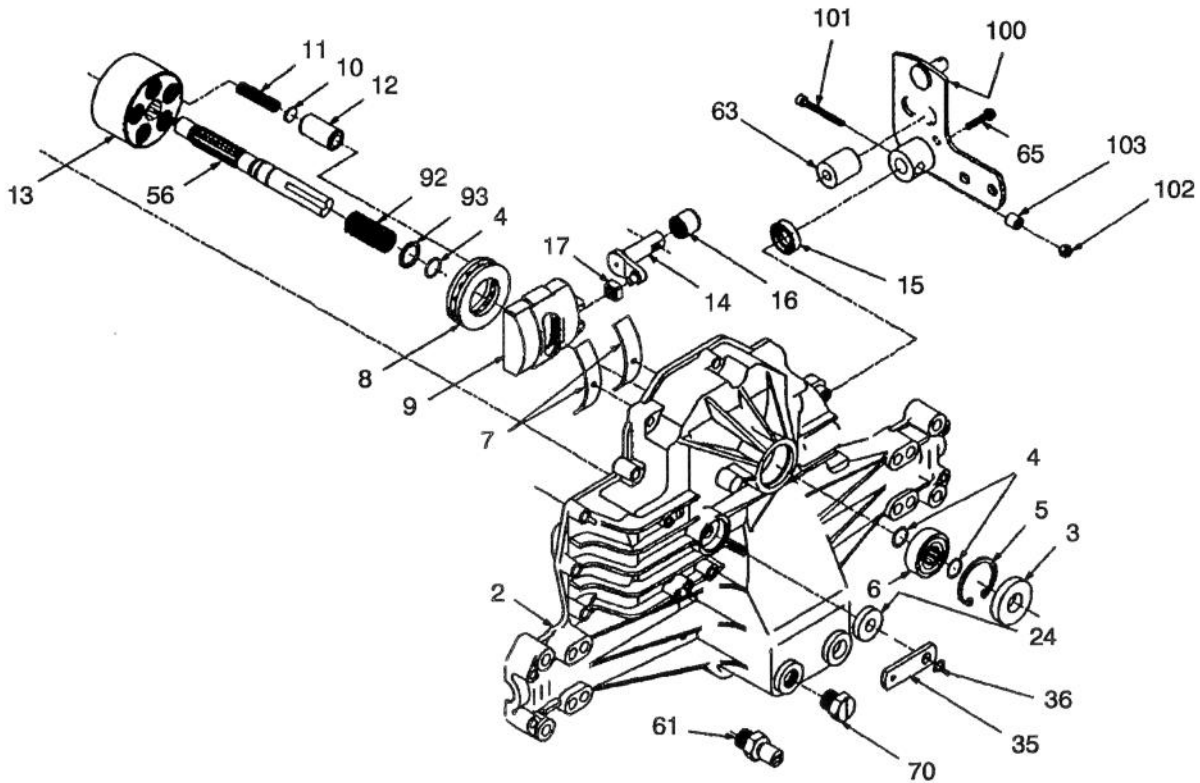
| Ref. No. | Part No. | Description | No. Used | Ref. No. | Part No. | Description | No. Used |
|----------|----------|--------------------------|----------|----------|----------|-------------------|----------|
| 1 | | Housing - Lower | 1 | 37 | 88-6230 | Arm - Actuating | 1 |
| 18 | | Shaft - Motor | 1 | 38 | 92-6549 | Pin - Actuating | 2 |
| 19 | | Bearing - Thrust | 1 | 39 | | Bolt | 1 |
| 20 | | Seat - Piston Spring | 7 | 40 | 3296-47 | Nut - Hex Lock | 2 |
| 21 | | Spring - Piston | 7 | 41 | | Stator - Brake | 4 |
| 22 | | Piston | 7 | 42 | | Rotor - Brake | 2 |
| 23 | | Block - Cylinder (Motor) | 1 | 43 | 5-4460 | Washer | 1 |
| 25 | | Actuator - Bypass | 1 | 54 | | O Ring | 1 |
| 26 | | Plate - Bypass | 1 | 55 | | Center - Section | 1 |
| 27 | | Seal - Lip | 1 | 57 | | Bolt | 3 |
| 28 | | Ring - Retaining | 1 | 58 | | Bolt | 20 |
| 29 | | Washer | 2 | 59 | | Pin | 3 |
| 30 | | Ball | 2 | 67 | | Du Bearing | 1 |
| 31 | | Spring - Check Valve | 2 | 71 | | Gasket Material | 1 |
| 32 | | Plate - Check Valve | 1 | 94 | | Grease Durina "O" | 1 |
| 33 | | Socket Hd. Cap Screw | 4 | 95 | 92-7300 | Strap - Locking | 1 |
| 34 | | Oil Filter Element | 1 | | | | |



C-1355

HYDROGEAR TRANSAXLE MODEL NO. 321-0500 (Continued)

| Ref. No. | Part No. | Description | No. Used | Ref. No. | Part No. | Description | No. Used |
|----------|----------|----------------------|----------|----------|----------|-------------------|----------|
| 44 | | Shaft - Axle | 2 | 52 | | Washer | 2 |
| 45 | | Gear - Diff. 72T | 1 | 53 | | Seal | 2 |
| 46 | | Housing - Diff. | 2 | 66 | | 20W50 Oil (.5675) | 1 |
| 47 | | Gear - Bevel 14T | 2 | 94 | | Grease Durina "O" | 1 |
| 48 | | Gear - Planet 10T | 2 | 98 | | Sleeve - Bearing | 2 |
| 49 | | Ring - Retaining | 2 | 99 | | Seal - Wiper | 2 |
| 50 | | Bolt - Diff. Locking | 2 | | | | |

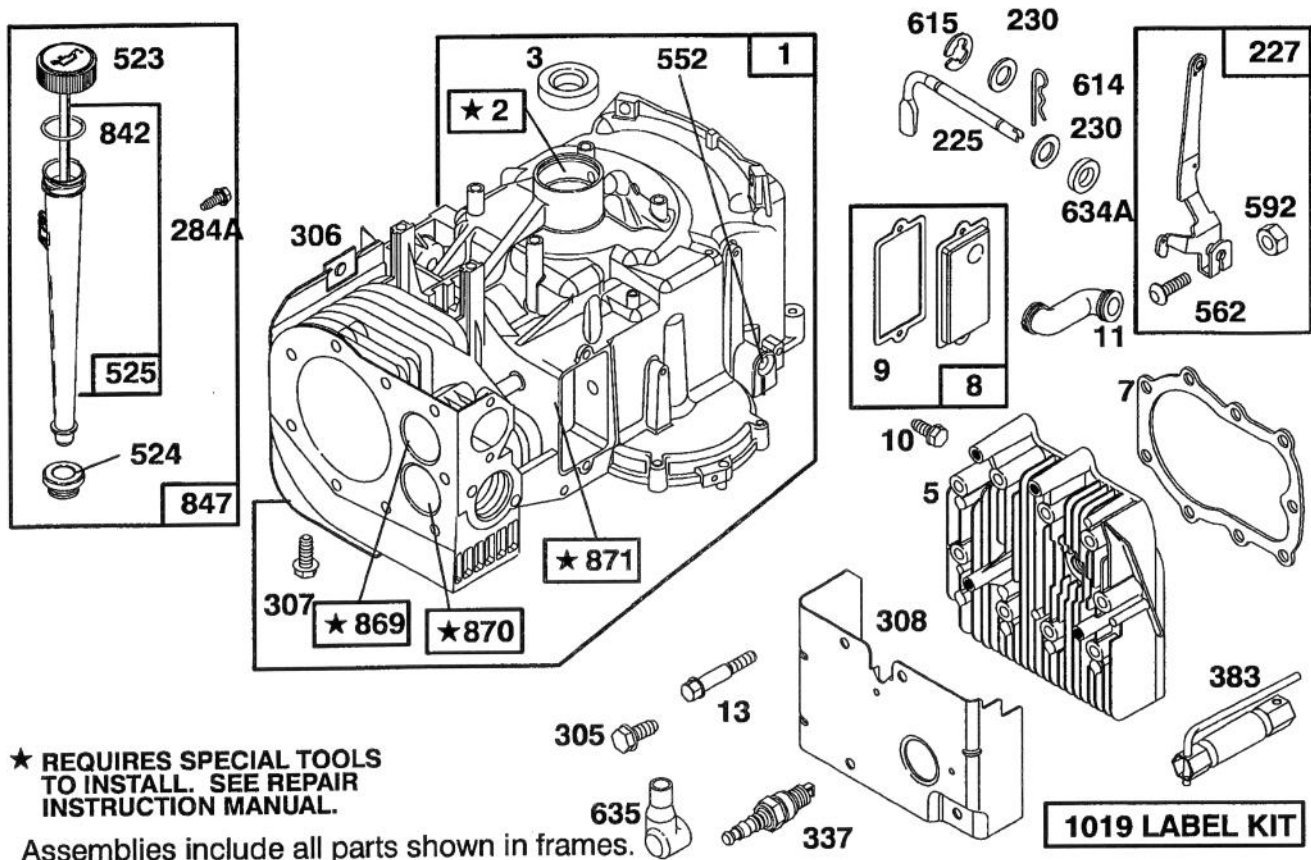


C-1356

HYDROGEAR TRANSAXLE MODEL NO. 321-0500 (Continued)

| Ref. No. | Part No. | Description | No. Used |
|----------|----------|----------------------------|----------|
| 2 | | Housing - Upper | 1 |
| 3 | 92-6543 | Seal - Lip | 1 |
| 4 | | Ring - Wire Retaining | 3 |
| 5 | | Ring - Retaining | 1 |
| 6 | | Bearing - Shaft Ball | 1 |
| 7 | | Bearing - Cradle | 2 |
| 8 | | Bearing - Thrust | 1 |
| 9 | | Washer - Variable | 1 |
| 10 | | Washer - Piston Thrust | 5 |
| 11 | | Spring - Piston | 5 |
| 12 | | Piston | 5 |
| 13 | | Block Cylinder (Motor) | 1 |
| 14 | | Arm - Trunnion | 1 |
| 15 | 92-6544 | Seal - Lip | 1 |
| 16 | | Bearing - Trunnion Journal | 1 |

| Ref. No. | Part No. | Description | No. Used |
|----------|----------|-----------------------|----------|
| 17 | | Guide - Slot | 1 |
| 24 | 92-6545 | Seal - Lip | 1 |
| 35 | 92-6547 | Arm - Bypass | 1 |
| 36 | 936109 | Ring - Retaining | 1 |
| 56 | | Shaft - Input | 1 |
| 61 | 92-8859 | Breather Ass'y | 1 |
| 63 | | Spacer | 1 |
| 65 | | Bolt | 1 |
| 70 | | Plug - Plastic | 1 |
| 92 | | Spring - Block | 1 |
| 93 | | Washer - Block Thrust | 1 |
| 100 | 92-9792 | Control Arm Ass'y | 1 |
| 101 | 3274-59 | Socket Head Cap Screw | 1 |
| 102 | 3296-12 | Nut | 1 |
| 103 | 86-4270 | Spacer | 1 |

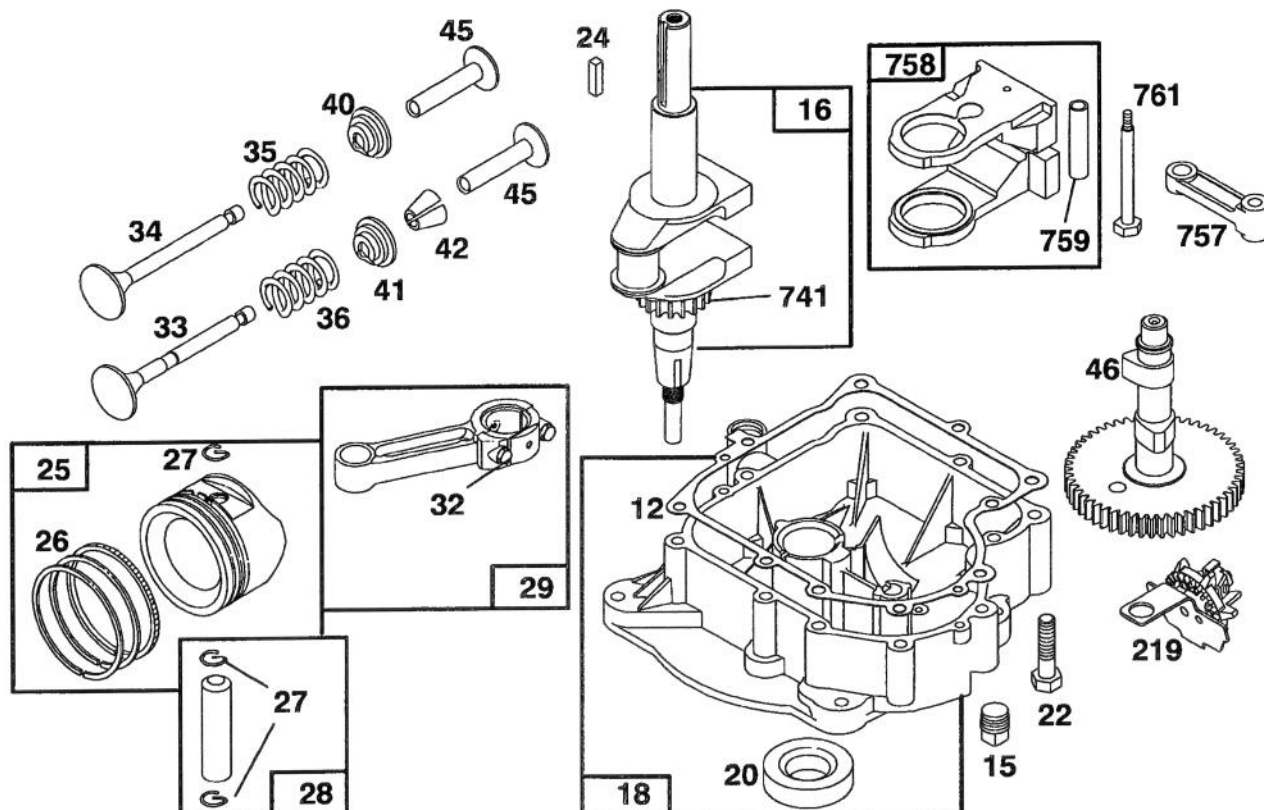


ENGINE BRIGGS & STRATTON MODEL 28M707-0122-01

| Ref. No. | Part No. | Description | No. Used |
|----------|----------|------------------------|----------|
| 1 | 496413 | Cylinder Assembly | 1 |
| 2 | 399265 | Bearing—Cylinder | 1 |
| ★3 | 391086 | Seal—Oil | 1 |
| 5 | 494240 | Head—Cylinder | 1 |
| ★7 | 271866 | Gasket—Cylinder Head | 1 |
| 8 | 495735 | Breather Assembly | 1 |
| ★9 | 27803 | Gasket—Valve Cover | 1 |
| 10 | 94621 | Screw—Sem | 1 |
| 11 | 280100 | Tube—Breather | 1 |
| 13 | 94622 | Screw—Cylinder Head | 1 |
| 225 | 231058 | Crank—Governor | 1 |
| 227 | 493935 | Lever Assy.—Governor | 1 |
| 230 | 94742 | Washer—Gov. Crank | 1 |
| 284A | 94073 | Screw—Hex Head | 1 |
| 305 | 94786 | Screw—Hex. Washer Hd. | 1 |
| 306 | 224545 | Shield—Cylinder | 1 |
| 307 | 94623 | Screw—Cyl. Shield Mtg. | 1 |
| 308 | 491490 | Cover—Cylinder Head | 1 |
| 337 | 802592 | Plug—Spark | 1 |
| 383 | 89838 | Wrench—Spark Plug | 1 |

| Ref. No. | Part No. | Description | No. Used |
|----------|----------|--|----------|
| 523 | 495230 | Cap and Dipstick—Oil Filler | 1 |
| ★524 | 68838 | Seal—Filler Tube | 1 |
| 525 | 496113 | Tube—Oil Filler | 1 |
| 552 | 231597 | Bushing—Gov. Crank | 1 |
| 562 | 92613 | Bolt—Governor Lever | 1 |
| 592 | 231082 | Nut—Hex. | 1 |
| 614 | 93306 | Cotter—Hair Pin | 1 |
| 615 | 93307 | Retainer—E-Ring | 1 |
| ★634A | 491323 | Seal—Governor | 1 |
| 635 | 66538 | Elbow—Spark Plug | 1 |
| ★842 | 270920 | Seal—Oil Filler Cap | 1 |
| 847 | 496415 | Fill Group—Oil | 1 |
| 869 | 261463 | Seat—Intake Valve (Std.) | 1 |
| 870 | 213316 | Seat—Exhaust Valve (Std.) | 1 |
| 871 | 261961 | Guide—Exhaust Valve | 1 |
| | | Note: 231218 Guide—Intake Valve | 1 |
| 1019 | 491255 | Label Kit | 1 |

★ Included in Gasket Set—Part No. 494241.

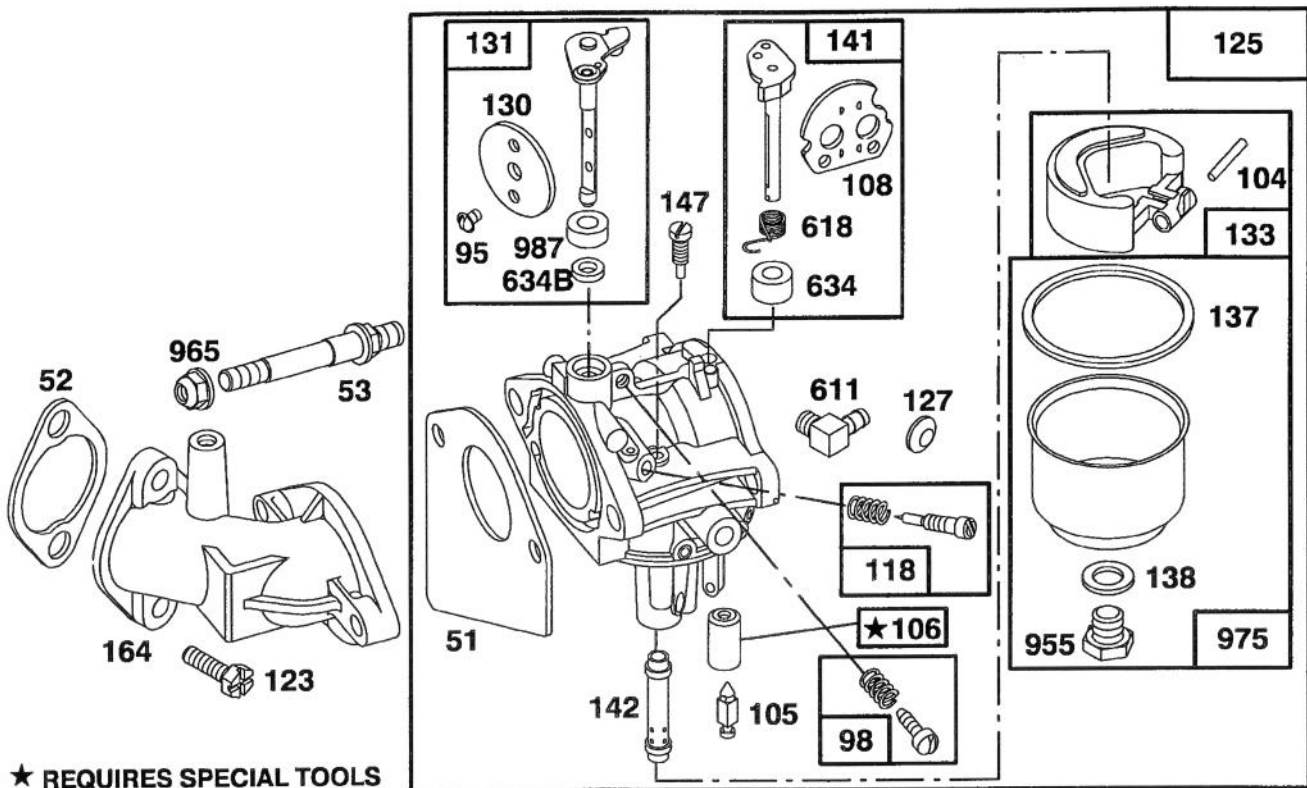


Assemblies include all parts shown in frames.

ENGINE BRIGGS & STRATTON MODEL 28M707-0122-01

| Ref. No. | Part No. | Description | No. Used | Ref. No. | Part No. | Description | No. Used |
|----------|----------|------------------------------|----------|----------|----------|--|----------|
| ★12 | 271916 | Gasket—Crkcse. (1/64" Thick) | 1 | 27 | 260924 | Lock—Piston Pin | 1 |
| ★ | 271997 | Gasket—Crkcse. (.005" Thick) | 1 | 28 | 299691 | Pin Assy.—Piston (Std.) | 1 |
| ★ | 271996 | Gasket—Crkcse. (.009" Thick) | 1 | | 391286 | Pin Assy.—Piston (.005" O.S.) | 1 |
| 15 | 94239 | Plug—Oil Drain | 1 | 29 | 490348 | Rod Assy — Connecting Rod—Connecting (020" U.S. Crankpin Bore) | 1 |
| 16 | 495162 | Crankshaft | 1 | | 490469 | Rod—Connecting (020" U.S. Crankpin Bore) | 1 |
| | 94196 | Key—Timing Gear | 1 | 32 | 94671 | Screw—Connecting Rod | 1 |
| 18 | 494238 | Base—Engine | 1 | 33 | 262246 | Valve—Exhaust | 1 |
| ★20 | 291675 | Seal—Oil | 1 | 34 | 262247 | Valve—Intake | 1 |
| 22 | 94624 | Screw—Base Mtg. Sem | 1 | 35 | 65906 | Spring—Intake Valve | 1 |
| 24 | 222698 | Key—Flywheel | 1 | 36 | 26828 | Spring—Exhaust Valve | 1 |
| 25 | 394661 | Piston Assy. (Std.) | 1 | 40 | 221596 | Retainer—Intake Valve | 1 |
| | 394662 | Piston Assy. (.010" O.S.) | 1 | 41 | 292260 | Rotocoil—Exhaust Valve | 1 |
| | 394663 | Piston Assy. (.020" O.S.) | 1 | 42 | 93630 | Retainer—Ex. Valve Rotocoil | 1 |
| | 394664 | Piston Assy. (.030" O.S.) | 1 | 45 | 262248 | Tappet—Valve | 1 |
| 26 | 391780 | Ring Set—Piston (Std.) | 1 | 46 | 212897 | Gear—Cam | 1 |
| | 391781 | Ring Set—Piston (.010" O.S.) | 1 | 219 | 490815 | Oil Slinger, Gov. Gear Assy. | 1 |
| | 391782 | Ring Set—Piston (.020" O.S.) | 1 | 741 | 262932 | Gear—Timing | 1 |
| | 391783 | Ring Set—Piston (.030" O.S.) | 1 | 757 | 212359 | Link—Counterweight | 1 |
| | | | | 758 | 399891 | Counterweight Assy. | 1 |
| | | | | 759 | 298909 | Pin—Counterweight | 1 |
| | | | | 761 | 93875 | Screw—Counterweight | 1 |

★ Included in Gasket Set—Part No. 494241.



★ REQUIRES SPECIAL TOOLS TO INSTALL. SEE REPAIR INSTRUCTION MANUAL.

Assemblies include all parts shown in frames.

ENGINE BRIGGS & STRATTON MODEL 28M707-0122-01

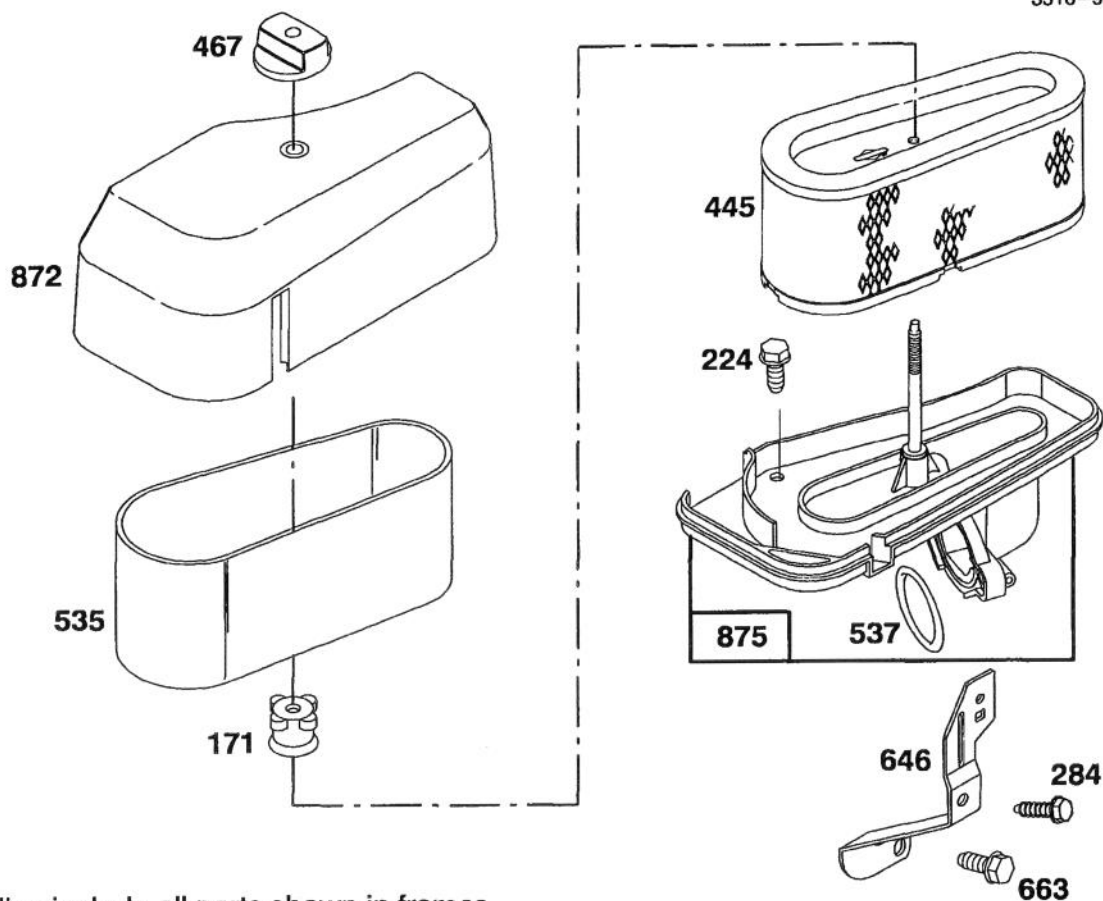
| Ref. No. | Part No. | Description | No. Used |
|----------|----------|---------------------------------------|----------|
| ●51 | 272465 | Gasket—Carburetor (Carb. to Elbow) | 1 |
| ★52 | 272554 | Gasket—Carburetor (Elbow to Cylinder) | 1 |
| 53 | 94637 | Stud—Carb. Mtg. | 1 |
| ●95 | 94098 | Screw—Throttle | 1 |
| 98 | 495800 | Screw—Idle Speed | 1 |
| ●104 | 231789 | Pin—Float Hinge | 1 |
| ●105 | 231855 | Valve Assy.—Inlet Needle | 1 |
| ●106 | 231854 | Inlet Valve Seat | 1 |
| 108 | 224540 | Valve—Choke | 1 |
| 118 | 494383 | Valve—Needle | 1 |
| 121 | 495799 | Carburetor Overhaul Kit | 1 |
| 123 | 94616 | Screw—Elbow Mtg. | 1 |
| 125 | 495706 | Carburetor Assembly | 1 |
| ●127 | | Plug—Welch (Sold in Kit Only). | 1 |
| 130 | 224539 | Valve—Throttle | 1 |

| Ref. No. | Part No. | Description | No. Used |
|----------|----------|---------------------------|----------|
| 131 | 494379 | Shaft and Lever— Throttle | 1 |
| 133 | 494381 | Float—Carburetor | 1 |
| ●◆137 | 281165 | Gasket—Float Bowl | 1 |
| ●◆138 | 281164 | Washer—Float Bowl Screw | 1 |
| 141 | 495931 | Shaft and Lever—Choke | 1 |
| ●142 | 494537 | Nozzle—Carburetor | 1 |
| ●147 | 231794 | Pilot—Jet | 1 |
| 164 | 213819 | Carburetor—Elbow | 1 |
| 611 | 494451 | Fuel Inlet Tube | 1 |
| 618 | 262803 | Spring—Choke Return | 1 |
| ●634 | 281168 | Seal—Choke Shaft | 1 |
| ●634B | 398970 | Washer—Throttle Shaft | 1 |
| 955 | 94642 | Screw—Fuel Bowl | 1 |
| 965 | 94010 | Locknut—Air Cleaner Mtg. | 1 |
| 975 | 494378 | Bowl Assy.—Carburetor | 1 |
| 977 | 494385 | Carburetor Gasket Kit | 1 |
| ●987 | 281166 | Seal—Throttle Shaft | 1 |

◆ Included in Carburetor Gasket Set—Part No.494385.

● Included in Carburetor Overhaul Kit—Part No. 495799.

★ Included in Gasket Set—Part No. 494241.



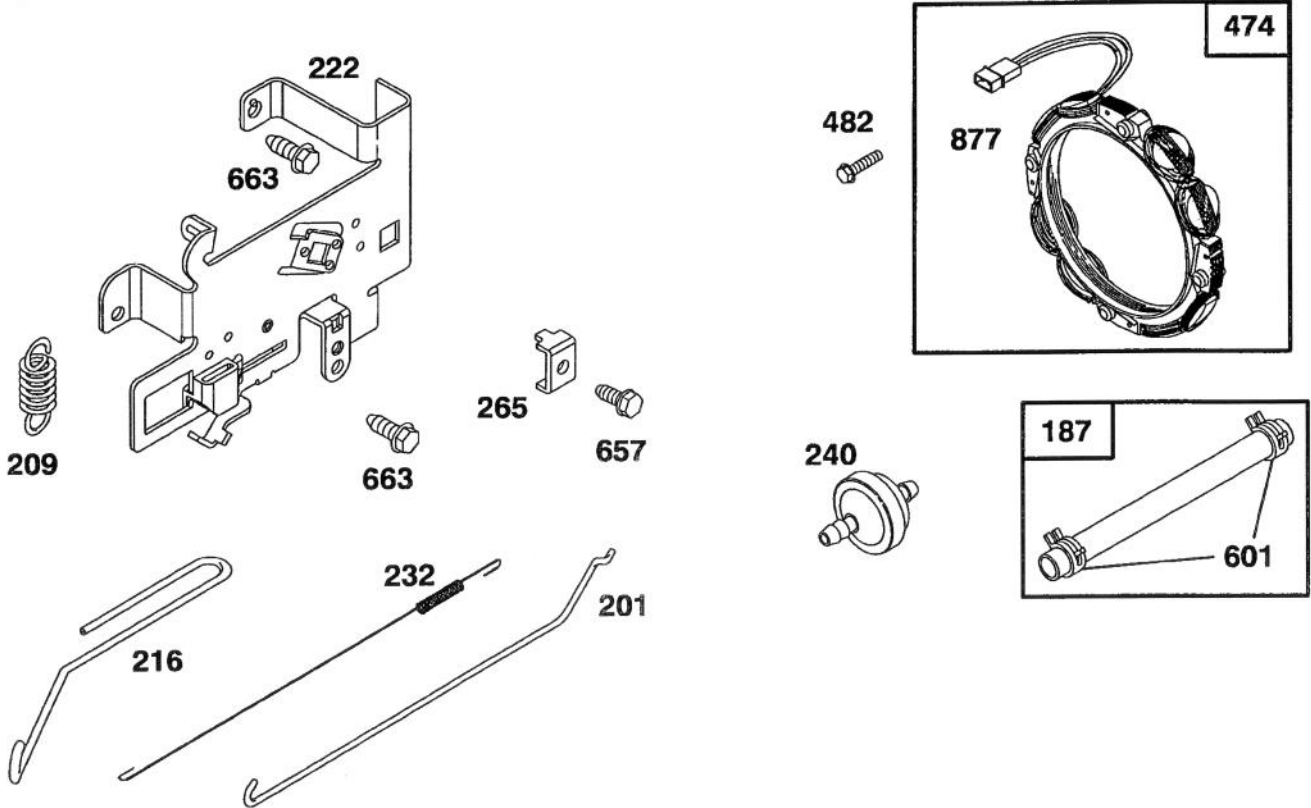
Assemblies include all parts shown in frames.

ENGINE BRIGGS & STRATTON MODEL 28M707-0122-01

| Ref. No. | Part No. | Description | No. Used |
|----------|----------|-----------------------|----------|
| 171 | 281051 | Nut—Air Cleaner Mtg. | 1 |
| 224 | 94513 | Screw—Air Cleaner Sem | 1 |
| 284 | 94704 | Screw Hex. Head | 1 |
| 445 | 493909 | Cartridge—Air Cleaner | 1 |
| 467 | 493903 | Knob—Air Cleaner | 1 |
| 535 | 272403 | Element—Air Cleaner | 1 |

| Ref. No. | Part No. | Description | No. Used |
|----------|----------|--------------------|----------|
| ★537 | 281106 | O-Ring—Air Cleaner | 1 |
| 646 | 224546 | Brace—Air Cleaner | 1 |
| 663 | 94620 | Screw—Hex. Hd. | 1 |
| 872 | 281361 | Cover—Air Cleaner | 1 |
| 875 | 494237 | Body—Air Cleaner | 1 |

★ Included in Gasket Set—Part No. 494241.

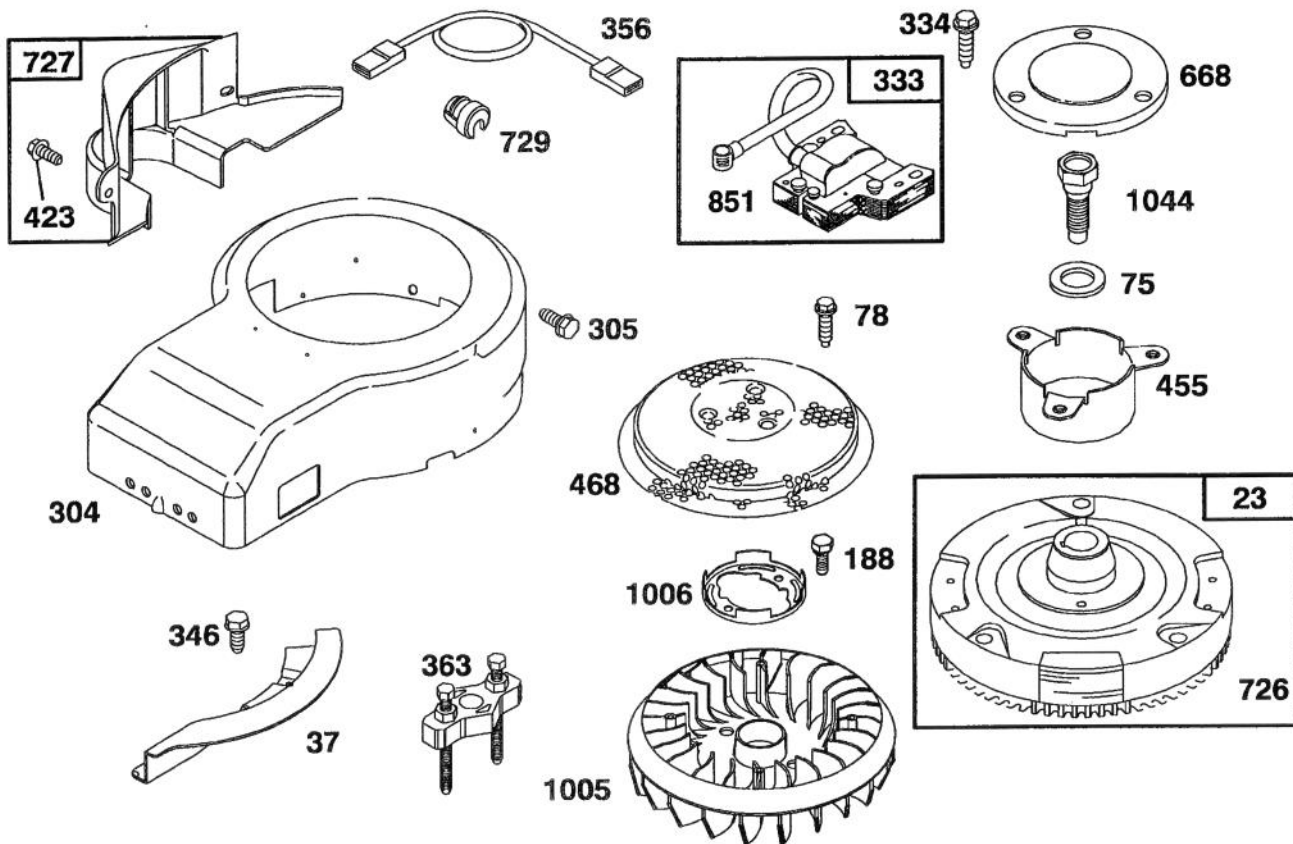


Assemblies include all parts shown in frames.

ENGINE BRIGGS & STRATTON MODEL 28M707-0122-01

| Ref. No. | Part No. | Description | No. Used |
|----------|----------|--------------------------------------|----------|
| 187 | 393815 | Line—Fuel (11" Long, Cut to Suit) | 1 |
| 201 | 262767 | Link—Governor | 1 |
| 209 | 260871 | Spring—Governor | 1 |
| 216 | 262766 | Link—Choke | 1 |
| 222 | 495611 | Plate—Governor Control | 1 |
| 232 | 262785 | Spring—Governor Link | 1 |
| 240 | 394358 | Filter—Fuel | 1 |
| 265 | 221535 | Clamp—Casing | 1 |

| Ref. No. | Part No. | Description | No. Used |
|----------|----------|---|----------|
| 474 | 393474 | Stator—Alternator (Dual Circuit) | 1 |
| 482 | 93621 | Screw—Sem | 1 |
| 601 | 93053 | Clamp—Fuel Pipe | 1 |
| 657 | 93496 | Screw—Sem | 1 |
| 663 | 94620 | Screw—Hex. Hd. | 1 |
| 877 | 393456 | Diode and Connector Assy (Dual Circuit) | 1 |

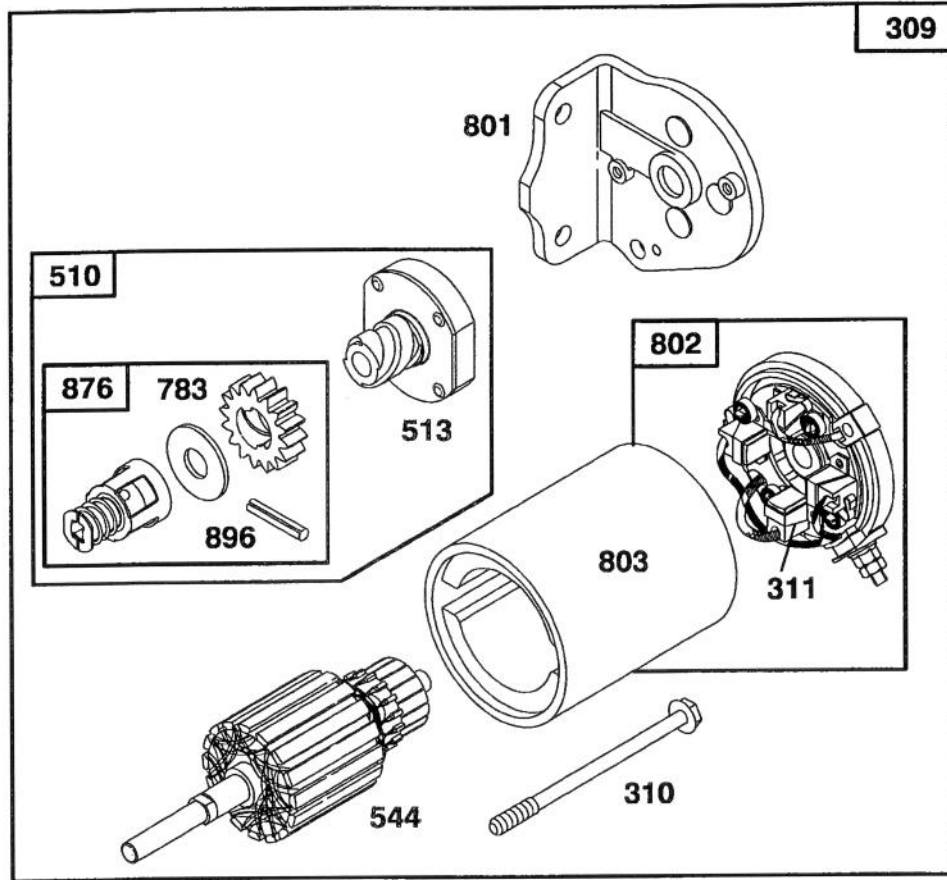
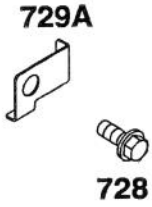


Assemblies include all parts shown in frames.

ENGINE BRIGGS & STRATTON MODEL 28M707-0122-01

| Ref. No. | Part No. | Description | No. Used |
|----------|----------|--------------------------------------|----------|
| 23 | 492326 | Flywheel and Ring Gear Assy.—Magneto | |
| 37 | 224502 | Guard—Flywheel | |
| 75 | 224061 | Washer—Spring | |
| 78 | 93805 | Screw—Sem | |
| 188 | 93535 | Screw—Sem (3/4" Long) | |
| 304 | 496431 | Housing—Blower | |
| 305 | 94619 | Screw—Blower Housing Mounting | |
| 333 | 492341 | Armature—Magneto | |
| 334 | 93381 | Screw—Armature Mtg. | |
| 346 | 93705 | Screw—Hex. Head | |
| 356 | 494328 | Wire Assembly | |

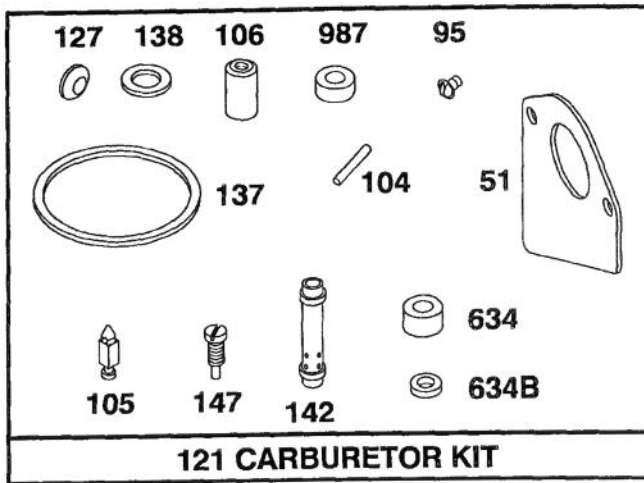
| Ref. No. | Part No. | Description | No. Used |
|----------|----------|-----------------------------------|----------|
| 363 | 19203 | Puller—Flywheel | |
| 423 | 94073 | Screw—Sem | |
| 455 | 222561 | Cup—Screen Mounting | |
| 468 | 224948 | Screen—Flush Rotating | |
| 668 | 280848 | Spacer | |
| 726 | 392134 | Gear—Ring (Includes Mtg Hardware) | |
| 727 | 490324 | Cover—Starter | |
| 729 | 281159 | Clip—Lead Wire | |
| 851 | 221798 | Terminal—Ignition Cable | |
| 1005 | 281355 | Fan—Flywheel | |
| 1006 | 224413 | Retainer—Fan | |
| 1044 | 94673 | Screw—Hex. Head | |



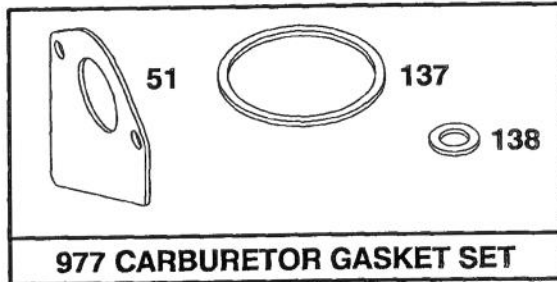
Assemblies include all parts shown in frames.

ENGINE BRIGGS & STRATTON MODEL 28M707-0122-01

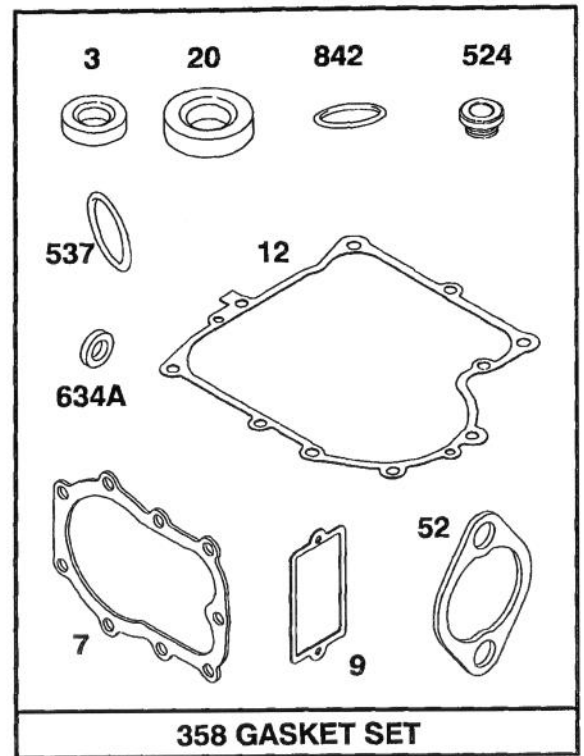
| Ref. No. | Part No. | Description | No. Used | Ref. No. | Part No. | Description | No. Used |
|----------|----------|-----------------------|----------|----------|----------|---------------------|----------|
| 309 | 394805 | Motor and Drive Assy. | 1 | 783 | 280104 | Gear | 1 |
| 310 | 94003 | Bolt Hex. Hd. | 1 | 801 | 394856 | Drive End Cap Assy. | 1 |
| 311 | 395538 | Brush Assy. | 1 | 802 | 395537 | End Cap Assy. | 1 |
| 510 | 495878 | Starter Drive Assy. | 1 | | | Commutator | 1 |
| 513 | 398003 | Clutch Assy. | 1 | 803 | 398159 | Housing Assy. | 1 |
| 544 | 390837 | Armature Assy. | 1 | 876 | 495877 | Retainer And Pin | 1 |
| 728 | 94627 | Screw-Hex. Hd. | 1 | 896 | 94288 | Pin-Roll | 1 |
| 729A | 224723 | Retainer-Wire | 1 | | | | |



121 CARBURETOR KIT



977 CARBURETOR GASKET SET



358 GASKET SET

Assemblies include all parts shown in frames.

ENGINE BRIGGS & STRATTON MODEL 28M707-0122-01

| Ref. No. | Part No. | Description | No. Used |
|----------|----------|---------------------------------------|----------|
| *3 | 391086 | Seal—Oil | 1 |
| *7 | 271866 | Gasket—Cylinder Head | 1 |
| *9 | 27803 | Gasket—Valve Cover | 1 |
| *12 | 271916 | Gasket—Crankcase Cover (1/64" Thick) | 1 |
| * | 271997 | Gasket—Crankcase Cover (.005" Thick) | 1 |
| * | 271996 | Gasket—Crankcase Cover (.009" Thick) | 1 |
| *20 | 291675 | Seal—Oil | 1 |
| ◆◆51 | 272465 | Gasket—Carburetor (Carb. to Elbow) | 1 |
| *52 | 272554 | Gasket—Carburetor (Elbow to Cylinder) | 1 |
| ◆95 | 94098 | Screw—Throttle | 1 |
| ◆104 | 231789 | Pin—Float Hinge | 1 |
| ◆105 | 231855 | Valve Assy.—Inlet Needle | 1 |
| ◆106 | 231854 | Inlet Valve Seat | 1 |

| Ref. No. | Part No. | Description | No. Used |
|----------|----------|--------------------------------|----------|
| 121 | 495799 | Carburetor Kit | 1 |
| ◆127 | | Plug—Welch (Sold in Kit Only). | 1 |
| ◆◆137 | 281165 | Gasket—Float Bowl | 1 |
| ◆◆138 | 281164 | Washer—Float Bowl Screw | 1 |
| ◆142 | 494537 | Nozzle—Carburetor | 1 |
| ◆147 | 231794 | Pilot—Jet | 1 |
| 358 | 494241 | Gasket Set | 1 |
| *524 | 68838 | Seal—Filler Tube | 1 |
| *537 | 281106 | O-Ring—Air Cleaner | 1 |
| ◆634 | 281168 | Seal—Choke Shaft | 1 |
| *634A | 491323 | Seal—Governor | 1 |
| ◆634B | 394970 | Washer—Throttle Shaft | 1 |
| *842 | 270920 | Seal—Oil Filler Cap | 1 |
| 977 | 494358 | Carburetor Gasket Set | 1 |
| ◆987 | 281166 | Seal—Throttle Shaft | 1 |

* Included in Gasket Set—Part No. 494241.

◆ Included in Carburetor Kit—Part No. 495799.

◆ Included in Carburetor Gasket Set—Part No. 494385.

TORO PART NUMBER INDEX

| | | | | | | | | | |
|---------|--------------------------|----|----|---|------------|--------------------------|----|-----|---|
| 111419 | Washer - Fender | 4 | 19 | 1 | 62-1292 | Knob - Shift | 12 | 6 | 1 |
| 115271 | Fan - Hydro | 11 | 7 | 1 | 62-3661 | Spacer - Bearing | 14 | 19 | 2 |
| 116397 | Relay | 9 | 16 | 1 | 62-3661 | Spacer - Bearing | 13 | 20 | 2 |
| 117137 | Decal - Belt Guide | 14 | 23 | 1 | 63-8360 | Key - Ignition | 9 | 12 | 1 |
| 117137 | Decal - Belt Guide | 13 | 24 | 1 | 65-2920 | Pad - Pedal | 7 | 23 | 1 |
| 117242 | Decal - Made in USA | 1 | 21 | 1 | 65-5080 | Bushing - Flanged | 11 | 26 | 1 |
| 701178 | Cap - Protector | 1 | 6 | 2 | 67-0710 | Ball - Swivel | 15 | 28 | 2 |
| 701756 | Wheel - Deck | 14 | 26 | 2 | 68-3650 | Decal - Deflector Danger | 13 | 3 | 1 |
| 702366 | Clip - Wire Retainer | 9 | 9 | 3 | 68-3650 | Decal - Deflector Danger | 14 | 5 | 1 |
| 910478 | Screw - Phillips Hd. | 9 | 19 | 4 | 68-3660 | Decal - Shield Danger | 14 | 10 | 1 |
| 936109 | Ring - Retaining | 19 | 36 | 1 | 68-3660 | Decal - Shield Danger | 13 | 36 | 1 |
| 3-6498 | Washer - Thrust | 5 | 14 | 2 | 76-2160 | Plate - Kicker | 13 | 10 | 4 |
| 3-6498 | Washer - Thrust | 4 | 32 | 2 | 76-3820 | Anchor - Belt Guide | 6 | 13 | 2 |
| 3-7501 | Washer - Curved | 5 | 11 | 4 | 79-1600 | Baffle - Recycler | 13 | 28 | 1 |
| 5-4460 | Washer | 17 | 43 | 1 | 79-1640 | Baffle - Rear | 13 | 13 | 1 |
| 5-4460 | Washer - Fender | 3 | 3 | 1 | 79-3061 | Blade - Recycler | 13 | 15 | 2 |
| 5-4460 | Washer - Fender | 11 | 24 | 1 | 79-3140 | Decal - Danger | 13 | 11 | 1 |
| 5-4460 | Washer - Fender | 4 | 24 | 1 | 79-3140 | Decal - Danger | 14 | 11 | 1 |
| 5-4460 | Washer - Fender | 7 | 24 | 1 | 80-0510 | Stiffener - Blade | 13 | 35 | 2 |
| 7-0030 | Bolt - Shoulder | 15 | 2 | 1 | 80-2240 | Plate - Name Grille | 9 | 30 | 1 |
| 7-0030 | Bolt - Shoulder | 12 | 3 | 4 | 80-2600 | Battery - 7 Plate | 9 | 6 | 1 |
| 7-0036 | Key - Square | 8 | 8 | 2 | 80-4341 | Shaft - Spindle | 13 | 14 | 2 |
| 23-0310 | Bolt - Shoulder | 16 | 3 | 1 | 80-4341 | Shaft - Spindle | 14 | 16 | 2 |
| 23-0310 | Bolt - Shoulder | 8 | 20 | 1 | 80-4360 | Shield - Bearing | 14 | 17 | 2 |
| 26-0671 | Bolt - Blade | 14 | 14 | 2 | 80-4360 | Shield - Bearing | 13 | 18 | 2 |
| 26-0671 | Bolt - Blade | 13 | 17 | 2 | 80-4380 | Spacer - Hardened | 14 | 18 | 2 |
| 26-0671 | Bolt - Blade | 6 | 17 | 1 | 80-4380 | Spacer - Hardened | 13 | 19 | 2 |
| 26-6701 | Spring - Brake | 11 | 20 | 1 | 80-6090 | Key - Square | 11 | 13 | 1 |
| 27-0220 | Screw - Plastite | 6 | 5 | 4 | 83-4390 | Rim | 8 | 7 | 2 |
| 27-0220 | Screw - Plastite | 5 | 17 | 2 | 86-4270 | Spacer | 19 | 103 | 1 |
| 27-8890 | Spring - Pedal Return | 7 | 6 | 1 | 88-0890 | Grip - Brake Rod | 4 | 11 | 1 |
| 28-0540 | Bolt - Shoulder | 16 | 10 | 4 | 88-3840-01 | Body - Rear | 1 | 5 | 1 |
| 28-0540 | Bolt - Shoulder | 2 | 11 | 2 | 88-3850 | Wheel - Steering | 5 | 3 | 1 |
| 28-2480 | Washer | 4 | 3 | 2 | 88-3870 | Cover - Steering Wheel | 5 | 2 | 1 |
| 28-2480 | Washer | 8 | 9 | 2 | 88-3880 | Tank - Gas | 6 | 6 | 1 |
| 28-8080 | Boot - Battery Terminal | 9 | 5 | 1 | 88-3930 | Shield - Heat | 2 | 14 | 1 |
| 37-8770 | Bolt - Shoulder | 7 | 2 | 1 | 88-3940 | Panel - Rear Hitch | 1 | 10 | 1 |
| 37-8770 | Bolt - Shoulder | 3 | 12 | 4 | 88-3950 | Seat | 3 | 1 | 1 |
| 38-1420 | Switch - Seat | 9 | 8 | 1 | 88-3960 | Lens - Headlights | 9 | 23 | 1 |
| 38-7820 | Bearing - Spindle | 14 | 21 | 4 | 88-3970 | Reflector & Lamp | 9 | 25 | 1 |
| 38-7820 | Bearing - Spindle | 13 | 23 | 4 | 88-3980 | Cap - Gas | 6 | 3 | 1 |
| 44-8110 | Cable - Battery Negative | 9 | 7 | 1 | 88-4020 | Guide - Deck Belt R.H. | 16 | 5 | 1 |
| 46-8090 | Screw - Plastite | 2 | 15 | 8 | 88-4030 | Guide - Deck Belt L.H. | 16 | 8 | 1 |
| 46-8090 | Screw - Plastite | 8 | 19 | 2 | 88-4040 | Box - Battery | 9 | 11 | 1 |
| 46-8091 | Screw - Plastite | 2 | 8 | 2 | 88-4050 | Duct - Hood Air | 2 | 17 | 1 |
| 47-2963 | Line - Fuel | 6 | 10 | 1 | 88-4070 | Tire - 13 | 4 | 4 | 2 |
| 48-7620 | Screw - Hex Hd. Cap | 11 | 1 | 1 | 88-4090 | Tire | 8 | 6 | 2 |
| 52-2891 | Bushing - Steering Link | 4 | 20 | 2 | 88-4140 | Nut - Wedge | 2 | 23 | 2 |
| 55-4300 | Decal - Spring Caution | 14 | 24 | 2 | 88-4160 | Clamp - Pivot Rod | 2 | 22 | 2 |
| 55-4300 | Decal - Spring Caution | 13 | 38 | 2 | 88-4170 | Rod - Tower Pivot | 2 | 24 | 1 |
| 56-2540 | Vent - Tube | 9 | 2 | 1 | 88-4180 | Button - Release | 5 | 6 | 1 |
| 56-6591 | Bolt - Wheel | 14 | 25 | 2 | 88-4190 | Bushing - Sliding | 5 | 5 | 1 |
| 56-9830 | Pad - Brake | 15 | 27 | 2 | 88-4210 | Bushing - Stationary | 5 | 19 | 1 |
| 57-4360 | Post - Rear Pivot | 13 | 4 | 1 | 88-4220 | Latch - Hood | 2 | 16 | 1 |
| 57-4360 | Post - Rear Pivot | 14 | 6 | 1 | 88-4230 | Trunnion - H.O.C. Rear | 12 | 12 | 2 |
| 57-4380 | Rod - Deflector Hinge | 14 | 1 | 1 | 88-4280 | Wheel & Tire Assembly | 4 | * | 2 |
| 57-4380 | Rod - Deflector Hinge | 13 | 32 | 1 | 88-4300 | Wheel & Tire Assembly | 8 | * | 1 |
| 57-4700 | Blade - Side Discharge | 14 | 12 | 2 | 88-4310 | Harness - Wire | 9 | 1 | 1 |
| 57-6950 | Spring - Torsion | 14 | 2 | 1 | 88-4320 | Harness - Wire | 9 | 24 | 1 |
| 57-6950 | Spring - Torsion | 13 | 31 | 1 | 88-4340 | Control - Throttle | 6 | 4 | 1 |
| 61-9780 | Cap - Hub | 4 | 1 | 2 | 88-4350 | Cable - Throttle | 6 | 2 | 1 |
| 61-9780 | Cap - Hub | 8 | 11 | 2 | 88-4370 | Rim - Front Wheel | 4 | 5 | 2 |
| 62-1292 | Knob - Engage Lever | 2 | 3 | 1 | 88-4400 | Bearing - Wheel | 4 | 35 | 4 |

*Not Illustrated

TORO PART NUMBER INDEX (Cont.)

3316-974

| Part No. | Description | Pg. No. | Ref. No. | Qty. | Part No. | Description | Pg. No. | Ref. No. | Qty. |
|----------|--------------------------|---------|----------|------|------------|---------------------------|---------|----------|------|
| 88-4410 | Gasket - Muffler | 6 | 22 | 1 | 88-5740 | Bracket - Deck Wheel | 14 | 27 | 1 |
| 88-4430 | Cover - Recycler | 13 | 33 | 1 | 88-5750 | Bracket - Deck Wheel | 14 | 28 | 1 |
| 88-4460 | Axle - Front | 4 | 7 | 1 | 88-5780-01 | Deck - 38 | 13 | 6 | 1 |
| 88-4510 | Housing - Spindle | 14 | 20 | 2 | 88-5780-01 | Deck - 38 | 14 | 8 | 1 |
| 88-4510 | Housing - Spindle | 13 | 21 | 2 | 88-5800 | Bushing - Steering | 4 | 33 | 4 |
| 88-4590 | Bolt - Shoulder | 15 | 3 | 3 | 88-5830 | Guide - Belt L.H. | 6 | 12 | 1 |
| 88-4620 | Bracket - Idler Pivot | 1 | 12 | 1 | 88-5840 | Guide - Belt R.H. | 6 | 21 | 1 |
| 88-4630 | Plate - Engine Mount | 1 | 3 | 1 | 88-5900 | Link - H.O.C. | 12 | 8 | 1 |
| 88-4640 | Bracket - Deck | 16 | 12 | 2 | 88-5910 | Spring - Torsion | 15 | 7 | 2 |
| 88-4650 | Rail - R.H. Frame | 1 | 4 | 1 | 88-5920 | Rod - Gas Tank | 6 | 7 | 1 |
| 88-4660 | Rail - L.H. Frame | 1 | 13 | 1 | 88-5960 | Guide - Trans. Belt L.H. | 11 | 5 | 1 |
| 88-4670 | Bushing - Eccentric | 4 | 17 | 1 | 88-5970 | Hook - Spring Return | 15 | 12 | 1 |
| 88-4690 | Block - Pivot | 8 | 14 | 1 | 88-6030 | Pedal - Speed Control | 8 | 21 | 1 |
| 88-4700 | Pulley - Cable | 16 | 4 | 1 | 88-6040 | Bracket - Hood Pivot R.H. | 2 | 19 | 1 |
| 88-4700 | Pulley - Cable | 7 | 17 | 1 | 88-6050 | Bracket - Hood Pivot L.H. | 2 | 12 | 1 |
| 88-4730 | Clamp - H.O.C. Pivot | 12 | 13 | 2 | 88-6070 | Arm - Idler | 7 | 14 | 1 |
| 88-4810 | Clamp - Shift Pivot | 7 | 20 | 1 | 88-6090 | Coupling - Steering | 5 | 20 | 1 |
| 88-4820 | Bracket - Seat Hinge | 3 | 13 | 2 | 88-6100 | Brake - Deck | 15 | 4 | 2 |
| 88-4830 | Link - Drag | 4 | 29 | 1 | 88-6130 | Spring - Deck Engage | 15 | 8 | 1 |
| 88-4850 | Pulley - Engine | 6 | 14 | 1 | 88-6140 | Spring - Brake | 7 | 7 | 1 |
| 88-4870 | Arm - Idler | 15 | 21 | 1 | 88-6180 | Pulley - Transaxle | 11 | 8 | 1 |
| 88-4880 | Spacer - Microswitch | 9 | 21 | 1 | 88-6220 | Spring - Compression | 1 | 8 | 2 |
| 88-4890 | Spring - Leaf | 5 | 13 | 1 | 88-6230 | Arm - Actuating | 17 | 37 | 1 |
| 88-4900 | Pan - Front Deck | 16 | 11 | 1 | 88-6250 | V-Belt - Deck | 15 | 17 | 1 |
| 88-4910 | Support - Seat | 3 | 2 | 1 | 88-6280 | V-Belt - Transaxle | 11 | 14 | 1 |
| 88-4960 | Shield - Exhaust Pipe | 1 | 14 | 1 | 88-6290 | Shield - Muffler | 1 | 15 | 1 |
| 88-4980 | Bushing - Idler Arm | 15 | 16 | 1 | 88-6300 | Shaft - Steering Upper | 5 | 9 | 1 |
| 88-4990 | Tray - Fender | 3 | 14 | 1 | 88-6330 | Spring - Extension | 7 | 12 | 1 |
| 88-5000 | Pedal - Clutch/Brake | 7 | 22 | 1 | 88-6370 | Shaft - Steering Short | 5 | 15 | 1 |
| 88-5010 | Spacer - Steering Rack | 4 | 26 | 1 | 88-6410 | Cable - Deck Engage | 16 | 6 | 1 |
| 88-5030 | Gate - H.O.C. | 3 | 8 | 1 | 88-6460 | Spring - Extension | 12 | 2 | 1 |
| 88-5070 | Guide - Idler Belt | 15 | 24 | 1 | 88-6480 | Muffler | 6 | 25 | 1 |
| 88-5110 | Pivot - H.O.C. | 12 | 14 | 1 | 88-9830 | Switch - Ignition | 9 | 15 | 1 |
| 88-5120 | Support - Front Axle | 1 | 17 | 1 | 88-9932 | Switch - Micro | 9 | 20 | 2 |
| 88-5130 | Bracket - Steering Rack | 4 | 14 | 1 | 92-2460 | Decal - Ignition/Lights | 2 | 28 | 1 |
| 88-5150 | Bushing - Flange | 5 | 16 | 1 | 92-2461 | Decal - Throttle | 2 | 29 | 1 |
| 88-5170 | Cover - H.O.C. | 3 | 6 | 1 | 92-2462 | Decal - Deck Engage | 2 | 30 | 1 |
| 88-5180 | Bracket - Backup | 5 | 12 | 1 | 92-2467 | Decal - Hood R.H. | 2 | 25 | 1 |
| 88-5190 | Lever - Deck Engage | 2 | 1 | 1 | 92-2468 | Decal - Hood L.H. | 2 | * | 1 |
| 88-5200 | Rack - Steering | 4 | 18 | 1 | 92-2486 | Decal - Instruction Hydro | 1 | 20 | 1 |
| 88-5230 | Mat - R.H. Foot | 3 | 15 | 1 | 92-5730 | Decal - Throttle | 2 | * | 1 |
| 88-5240 | Mat - L.H. Foot | 3 | 9 | 1 | 92-5731 | Decal - Ignition/Light | 2 | * | 1 |
| 88-5260 | Bracket - Transaxle Mtg. | 1 | 11 | 2 | 92-5733 | Decal - Deck Engage | 2 | * | 1 |
| 88-5270 | Rod - Clutch/Brake | 7 | 1 | 1 | 92-5748 | Decal - Air Duct | 2 | 27 | 1 |
| 88-5310 | Lever - H.O.C. | 12 | 7 | 1 | 92-5782 | Patch - Heat Tape | 2 | 26 | 1 |
| 88-5330 | Pulley - Deck | 15 | 18 | 2 | 92-6013 | Bracket - Speed Control | 11 | 25 | 1 |
| 88-5360 | Spacer - Wheel | 11 | 10 | 2 | 92-6543 | Seal - Lip | 19 | 3 | 1 |
| 88-5380 | Rod - Steering Tie | 4 | 8 | 1 | 92-6544 | Seal - Lip | 19 | 15 | 1 |
| 88-5390 | Bellcrank | 15 | 10 | 1 | 92-6545 | Seal - Lip | 19 | 24 | 1 |
| 88-5450 | Rod - Hanger Rear | 12 | 11 | 2 | 92-6547 | Arm - Bypass | 19 | 35 | 1 |
| 88-5460 | Guide - Trans. Belt | 11 | 22 | 1 | 92-6549 | Pin - Actuating | 17 | 38 | 2 |
| 88-5470 | Spacer - Front Axle | 4 | 34 | 2 | 92-7300 | Strap - Locking | 17 | 95 | 1 |
| 88-5500 | Rod - Pedal Pivot | 7 | 16 | 1 | 92-7305 | Spring - Extension | 8 | 16 | 1 |
| 88-5510 | Rod - Parking Brake | 4 | 9 | 1 | 92-7889 | Spindle - R.H. | 4 | 6 | 1 |
| 88-5520 | Bracket - Parking Brake | 4 | 10 | 1 | 92-7890 | Spindle - L.H. | 4 | 31 | 1 |
| 88-5540 | Rod - Deck Brake R.H. | 15 | 22 | 1 | 92-8650 | Hood | 2 | 18 | 1 |
| 88-5550 | Rod - Deck Brake L.H. | 15 | 5 | 1 | 92-8757 | Decal - Engine 13 H.P. | 6 | 9 | 1 |
| 88-5560 | Guide - Idler Belt | 7 | 3 | 1 | 92-8784 | Decal - Dump Valve | 1 | 19 | 1 |
| 88-5570 | Link - Adjusting H.O.C. | 12 | 1 | 2 | 92-8786 | Decal - Tower 1338HXL | 2 | 31 | 2 |
| 88-5610 | Lever - Neutral Return | 8 | 15 | 2 | 92-8789 | Decal - Rear Body | 1 | 18 | 1 |
| 88-5620 | Strap - Torque | 11 | 9 | 1 | 92-8856 | Wire - Bypass | 11 | 21 | 1 |
| 88-5630 | Pulley - Idler | 15 | 23 | 1 | 92-8857 | Lever - Bypass | 11 | 6 | 1 |
| 88-5680 | Pulley - Flat Idler | 7 | 4 | 1 | 92-8859 | Breather Ass'y | 19 | 61 | 1 |

*Not Illustrated

TORO PART NUMBER INDEX (Cont.)

| Part No. | Description | Pg. No. | Ref. No. | Qty. | Part No. | Description | Pg. No. | Ref. No. | Qty. |
|----------|---------------------------|---------|----------|------|----------|------------------------|---------|----------|------|
| 92-8875 | Switch - Rocker | 9 | 27 | 1 | 3256-23 | Washer - Flat | 1 | 1 | 4 |
| 92-8934 | Spring - Extension | 15 | 9 | 1 | 3256-23 | Washer - Flat | 8 | 2 | 2 |
| 92-9520 | Decal - Recycler | 13 | 8 | 1 | 3256-23 | Washer - Flat | 11 | 3 | 8 |
| 92-9674 | Knob - Studded | 3 | 4 | 1 | 3256-23 | Washer - Flat | 2 | 5 | 2 |
| 92-9790 | Transaxle | 11 | 12 | 1 | 3256-23 | Washer - Flat | 7 | 9 | 1 |
| 92-9792 | Control Arm Ass'y | 19 | 100 | 1 | 3256-23 | Washer - Flat | 15 | 14 | 3 |
| 92-9793 | Rod - Speed Control | 8 | 17 | 1 | 3256-24 | Washer - Flat | 12 | 10 | 7 |
| 92-9845 | Solenoid | 9 | 17 | 1 | 3256-24 | Washer - Flat | 2 | 20 | 2 |
| 93-0303 | Tower - Steering | 2 | 2 | 1 | 3256-24 | Washer - Flat | 15 | 25 | 2 |
| 93-0317 | Deflector Assembly | 13 | 2 | 1 | 3256-24 | Washer - Flat | 4 | 25 | 4 |
| 93-0317 | Deflector Assembly | 14 | 3 | 1 | 3256-25 | Washer - Flat | 6 | 15 | 1 |
| 93-1122 | Decal - Danger | 13 | 1 | 2 | 3256-25 | Washer - Flat | 4 | 22 | 2 |
| 93-1122 | Decal - Danger | 14 | 4 | 2 | 3256-26 | Washer - Flat | 7 | 18 | 2 |
| 93-1366 | Decal - Instruction Hydro | 1 | * | 1 | 3256-58 | Washer - Flat | 11 | 2 | 1 |
| 93-3240 | Seal - Plunger | 9 | 28 | 1 | 3256-68 | Washer - Fender | 15 | 11 | 3 |
| 218-461 | Nut - Hex | 9 | 13 | 1 | 3269-26 | Washer - Backup | 3 | 16 | 2 |
| 232-27 | Valve Stem w/Cap | 8 | 28 | 2 | 3272-10 | Pin - Cotter | 7 | 21 | 1 |
| 232-27 | Valve Stem w/Cap | 4 | 36 | 2 | 3272-10 | Pin - Cotter | 4 | 23 | 4 |
| 232-39 | Inner Tube (Optional) | 4 | * | 2 | 3272-12 | Pin - Cotter | 4 | 2 | 2 |
| 232-41 | Inner Tube (Optional) | 8 | * | 2 | 3274-12 | Screw - Hex Soc. Hd. | 6 | 24 | 2 |
| 2412-98 | Clamp - Hose | 6 | 11 | 2 | 3274-59 | Socket Head Cap Screw | 19 | 101 | 1 |
| 302-5 | Fitting - Grease | 4 | 37 | 2 | 3290-282 | Rivet - Pop | 3 | 7 | 2 |
| 302-26 | Fitting - Grease | 4 | 16 | 1 | 3290-282 | Rivet - Pop | 15 | 26 | 4 |
| 321-4 | Screw - Hex Hd. Cap | 9 | 3 | 2 | 3290-299 | Nut - Tinnerman | 9 | 31 | 1 |
| 321-4 | Screw - Hex Hd. Cap | 5 | 8 | 2 | 3290-307 | Pin - Cotter | 2 | 7 | 2 |
| 321-4 | Screw - Hex Hd. Cap | 2 | 10 | 4 | 3290-307 | Pin - Cotter Hair | 8 | 5 | 2 |
| 321-4 | Screw - Hex Hd. Cap | 13 | 22 | 2 | 3290-307 | Pin - Hair Cotter | 12 | 9 | 7 |
| 321-4 | Screw - Hex Hd. Cap | 6 | 26 | 1 | 3290-307 | Pin - Hair Cotter | 11 | 30 | 1 |
| 321-9 | Screw - Hex Hd. Cap | 5 | 21 | 2 | 3290-354 | Speednut | 9 | 22 | 2 |
| 321-14 | Screw - Hex Hd. Cap | 13 | 37 | 2 | 3290-465 | Washer - Belleville | 14 | 13 | 2 |
| 322-3 | Screw - Hex Hd. Cap | 1 | 2 | 22 | 3290-465 | Washer - Belleville | 13 | 16 | 2 |
| 322-3 | Screw - Hex Hd. Cap | 12 | 4 | 4 | 3290-479 | Panel - Fastener | 3 | 5 | 16 |
| 322-3 | Screw - Hex Hd. Cap | 2 | 4 | 2 | 3290-496 | Nut - Retained | 2 | 13 | 2 |
| 322-3 | Screw - Hex Hd. Cap | 3 | 11 | 4 | 3296-12 | Nut | 19 | 102 | 1 |
| 322-3 | Screw - Hex Hd. Cap | 7 | 15 | 2 | 3296-29 | Nut - Lock | 16 | 1 | 6 |
| 322-3 | Screw - Hex Hd. Cap | 14 | 29 | 5 | 3296-29 | Nut - Lock | 11 | 4 | 10 |
| 322-5 | Screw - Hex Hd. Cap | 1 | 7 | 2 | 3296-29 | Nut - Lock | 12 | 5 | 8 |
| 322-5 | Screw - Hex Hd. Cap | 15 | 15 | 2 | 3296-29 | Nut - Lock | 2 | 6 | 2 |
| 322-9 | Screw - Hex Hd. Cap | 6 | 18 | 4 | 3296-29 | Nut - Lock | 6 | 8 | 3 |
| 322-12 | Screw - Hex Hd. Cap | 16 | 2 | 2 | 3296-29 | Nut - Lock | 1 | 9 | 24 |
| 322-12 | Screw - Hex Hd. Cap | 11 | 11 | 4 | 3296-29 | Nut - Lock | 3 | 10 | 6 |
| 323-5 | Screw - Hex Hd. Cap | 13 | 29 | 2 | 3296-29 | Nut - Lock | 7 | 11 | 4 |
| 323-11 | Screw - Hex Hd. Cap | 7 | 5 | 1 | 3296-29 | Nut - Lock | 4 | 12 | 5 |
| 323-12 | Screw - Hex Hd. Cap | 15 | 1 | 1 | 3296-29 | Nut - Lock | 15 | 13 | 6 |
| 323-13 | Screw - Hex Hd. Cap | 4 | 27 | 2 | 3296-29 | Nut - Lock | 13 | 27 | 1 |
| 3219-6 | Nut - Lock | 15 | 19 | 2 | 3296-29 | Nut - Lock | 14 | 30 | 5 |
| 3230-1 | Bolt - Carriage | 4 | 15 | 4 | 3296-39 | Nut - Lock | 16 | 9 | 1 |
| 3230-1 | Bolt - Carriage | 13 | 26 | 1 | 3296-39 | Nut - Lock | 15 | 20 | 1 |
| 3230-2 | Bolt - Carriage | 11 | 23 | 1 | 3296-39 | Nut - Lock | 4 | 21 | 3 |
| 3230-3 | Bolt - Carriage | 7 | 19 | 1 | 3296-39 | Nut - Lock | 14 | 22 | 3 |
| 3230-3 | Bolt - Carriage | 4 | 28 | 1 | 3296-39 | Nut - Lock | 13 | 25 | 3 |
| 3230-5 | Bolt - Carriage | 11 | 27 | 1 | 3296-42 | Nut - Lock | 15 | 6 | 2 |
| 3230-7 | Bolt - Carriage | 11 | 28 | 1 | 3296-42 | Nut - Lock | 2 | 9 | 4 |
| 3231-4 | Bolt - Carriage | 4 | 13 | 1 | 3296-42 | Nut - Lock | 5 | 10 | 4 |
| 3253-3 | Washer - Lock | 6 | 27 | 1 | 3296-42 | Nut - Lock | 13 | 12 | 4 |
| 3253-4 | Washer - Lock | 6 | 23 | 2 | 3296-47 | Nut - Hex Lock | 17 | 40 | 2 |
| 3253-22 | Washer - Lock | 6 | 16 | 1 | 3296-59 | Nut - Lock | 7 | 13 | 2 |
| 3254-5 | Washer - Lock | 9 | 14 | 1 | 3296-59 | Nut - Lock | 8 | 22 | 1 |
| 3255-7 | Lockwasher | 9 | 29 | 2 | 32103-22 | Nut - Wing | 9 | 4 | 2 |
| 3255-8 | Washer - Ext. Tooth Lock | 6 | 19 | 1 | 32104-76 | Screw - Thread Cutting | 16 | 7 | 5 |
| 3256-22 | Washer - Flat | 5 | 7 | 2 | 32104-76 | Screw - Thread Tapping | 1 | 16 | 1 |
| 3256-22 | Washer - Flat | 8 | 18 | 2 | 32121-78 | Pin - Roll | 5 | 4 | 1 |
| 3256-22 | Washer - Flat | 11 | 29 | 1 | 32128-43 | Nut - Flange | 2 | 21 | 2 |

*Not Illustrated

