



Motor Replacement Kit for Front and Rear Reel Mowers for Reelmaster 3100-D

Model No. 117-5122

Model No. 117-5123

Form No. 3362-775 Rev A

Installation Instructions

Installation

When replacing the motor, also replace the motor coupler and flange lock nut with the coupler and nut

included in the kit (Figure 1). Do not use the old coupler with the new motor.

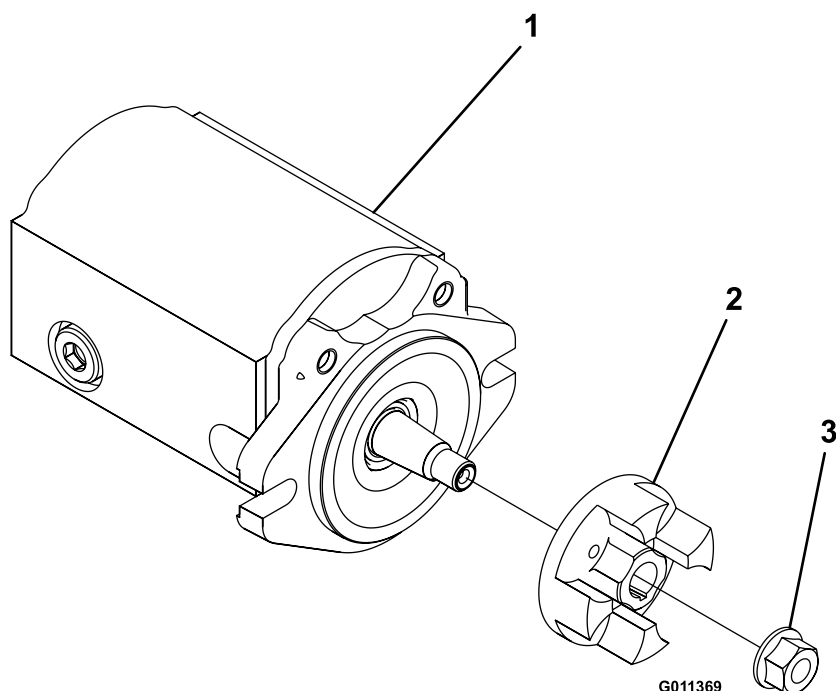


Figure 1

1. Motor

2. Coupler

3. Flange nut