



## ProCore<sup>®</sup> SR72 Aerator

Model No. 09926 - 290000001 and up.

### Parts Catalog

---

#### Ordering Replacement Parts

To order replacement parts, please supply the part number, the quantity, and the description of each part desired.

#### Understanding Reference Numbers

Each identified part in an illustration has a reference number. The reference number for a part also appears in the parts list, along with other information about the part.

This catalog uses two special reference number formats, one to indicate parts in a service assembly and another to indicate the quantity of a given part in an illustration.

#### Service Assembly Reference Numbers

Parts in service assemblies have reference numbers in the form a:b. The a represents the reference number of the entire service assembly and the b represents a sequential number unique to each part within the service assembly.

For example, a wheel assembly might be identified by reference number 6, the tire by 6:1, the valve by 6:2, and the wheel by 6:3. When you order the assembly identified by reference number 6, you receive all parts identified by reference numbers 6:1, 6:2, and 6:3. However, you may also order any part individually. Reference numbers of this type appear in illustrations and in part lists.

#### Reference Numbers Indicating Quantity

In an illustration, if a reference number indicates more than one part, the reference number has the form nX y. The n represents the quantity of the part, the X is the multiplication symbol, and the y represents the reference number.

For example, in an illustration, the reference number 2X 37 means that two of the parts identified by reference number 37 are indicated.

# Contents

Description	Page	Description	Page
Drive Assembly	..... 3	RH Crankshaft Assembly	..... 8
Frame and Roller Assembly	..... 4	RH Outside Crankshaft Assembly	..... 9
LH Outside Crankshaft Assembly	..... 5	Connecting Rod Assembly	..... 10
LH Crankshaft Assembly	..... 6	Lower Arm and Hinge Assembly	..... 11
Center Crankshaft Assembly	..... 7	Cover Assembly	..... 12

## Part Description Abbreviations

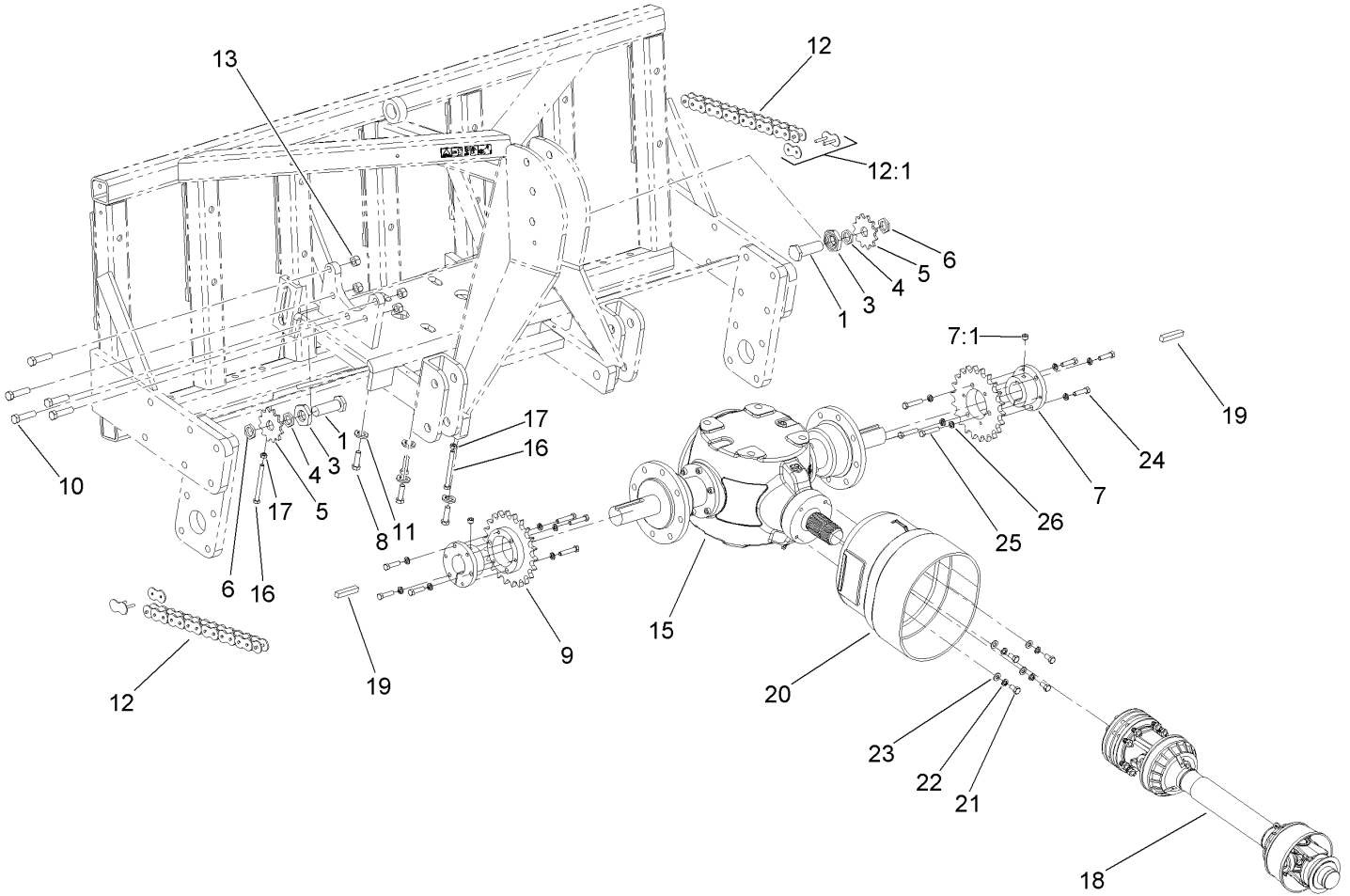
Part descriptions in this catalog may include the following abbreviations.

AR. .... as required	HWHTF. .... hex washer head thread forming
ASM. .... assembly	HYD. .... hydraulic
BBC. .... blade brake clutch	LH. .... left hand
CARR. .... carriage	NI. .... nylon insert
CCW. .... counter clock wise	NPTF. .... national pipe thread fine
CW. .... clockwise	PFH. .... phillips flat head
DEG. .... degrees	PPH. .... phillips pan head
ECM. .... electronic control module	PPHTF. .... phillips pan head thread forming
EXT. .... external	PRH. .... phillips round head
FH. .... flat head	PTH. .... phillips truss head
GA. .... gauge	PTO. .... power-take-off
HD. .... heavy-duty	RH. .... right hand
HF. .... hex flange	ROPS. .... roll-over protection system
HH. .... hex head	SFH. .... slotted fillister head
HHF. .... hex head flange	SHH. .... slotted hex head
HHFTF. .... hex head flange thread forming	SHWH. .... slotted hex washer head
HJ. .... hex jam	SPH. .... slotted pan head
HLH. .... hex lag head	SQH. .... square head
HOC. .... height-of-cut	SRH. .... slotted round head
HSBH. .... hex socket button head	STD. .... standard
HSFH. .... hex socket flat head	TAP. .... self tapping
HSH. .... hex socket head	TTH. .... torx truss head
HWH. .... hex washer head	

## Footnotes

❶ Not illustrated

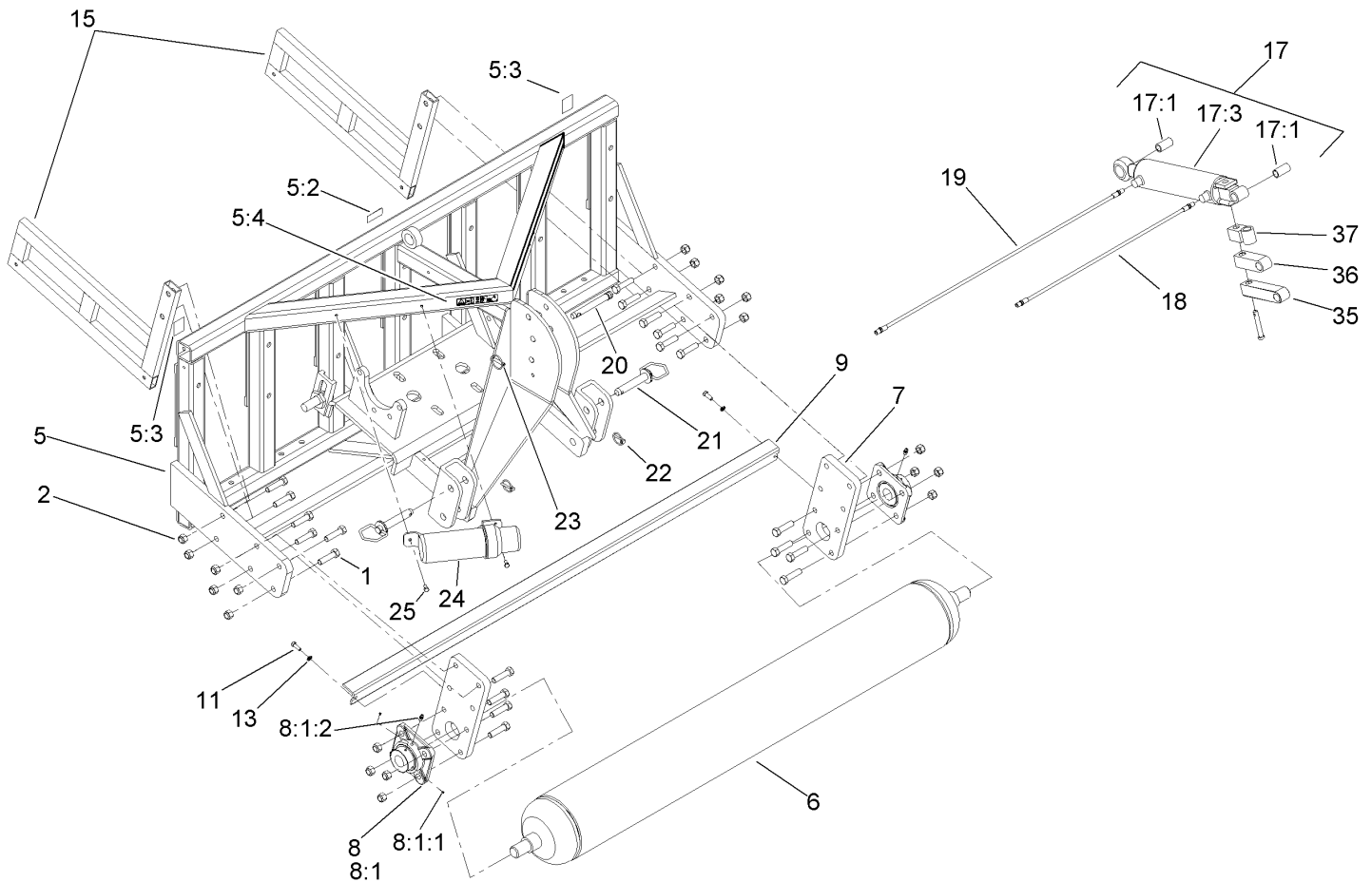
❷ Not serviced separately



## Drive Assembly

Ref	Part No.	Qty.	Description
1	SG584100	2	Screw-HH Special
3	SG564100	2	Nut-Hex, Jam
4	SG571450	2	Nut-Hex, Jam
5	SG511280	2	Sprocket-Idler
6	SG571100	2	Nut-Lock
7	SG550177	2	Hub-Sprocket
7:1	3246-4	1	Screw-Set
8	33119-040	4	Screw-HH
9	SG510522	2	Sprocket-22 Tooth, 6 Bolt
10	SG562562	10	Screw-HH
11	100-7607	4	Washer-Lock
12	SG580148	2	Chain-O-Ring
12:1	SG581081	1	Link-Master, O-Ring
13	99-4371	10	Nut-Lock
15	SG506000	1	Gearbox ASM
16	SG584300	2	Screw-HH
17	3217-7	2	Nut-Hex
18	SG526016	1	PTO #6
19	SG555500	2	Key-Square
20	SG4171401	1	Cone-Shaft, Lg
21	33115-020	4	Screw-HH
22	48-9590	4	Washer-Lock
23	3256-24	4	Washer-Flat
24	323-43	6	Screw-HH

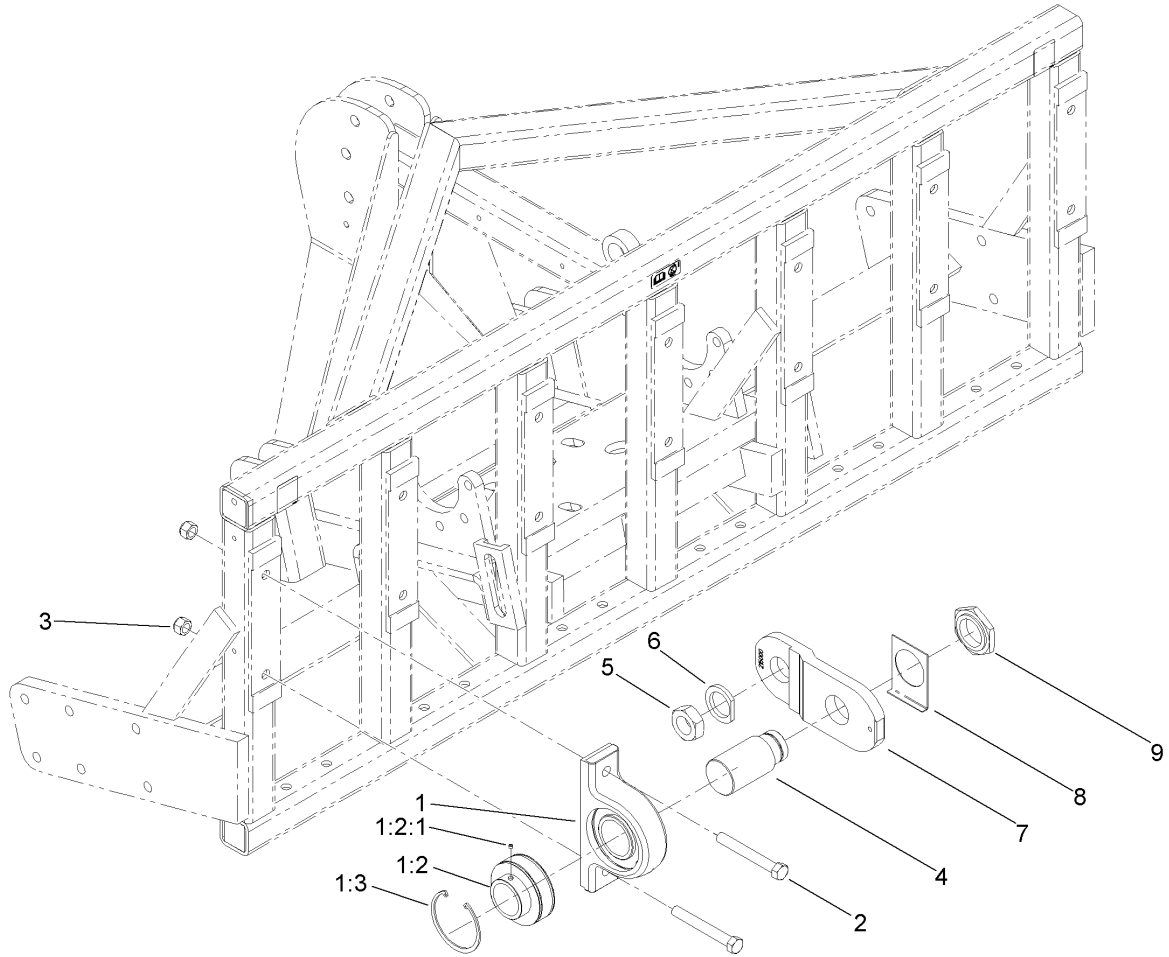
Ref	Part No.	Qty.	Description
25	323-32	6	Screw-HH
26	3253-21	12	Washer-Lock



## Frame and Roller Assembly

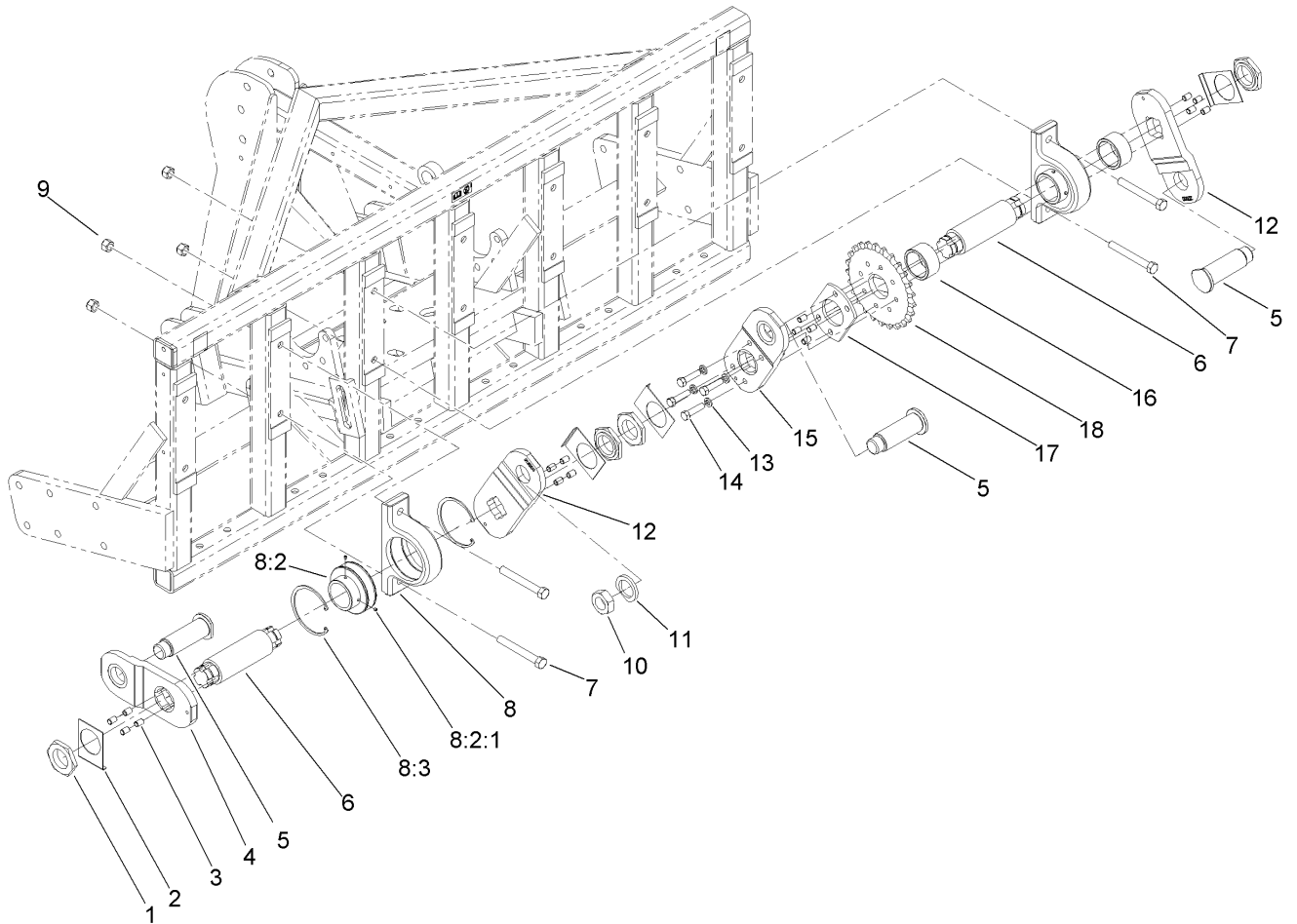
Ref	Part No.	Qty.	Description
1	3214-9	20	Screw-HH
2	3296-41	20	Nut-Lock NI
5	117-7104	1	Frame ASM
5:2	117-7052	1	Decal-No Oil
5:3	100-3612	2	Decal-Warning
5:4	110-4668	1	Decal-Warning, PTO
6	SG616061-03	1	Roller-Main
7	SG625048-01	2	Bar-Roller, Vertical
8	SG631150-03	2	Bearing-Roller
②8:1		1	Bearing-Flange
8:1:1	106-9662	2	Screw-Set, HSH
8:1:2	302-19	1	Fitting-Grease
9	SG616725-03	1	Bar-Scraper
11	323-6	2	Screw-HH
13	3253-21	2	Washer-Lock
15	SG785150-03	2	Stand-Storage
17	SG715010	1	HYD Cylinder ASM
17:1	SG555013	2	Bushing
②17:3		1	Cylinder-Hydraulic
①17:3:1	117-7175	1	Seal Kit

Ref	Part No.	Qty.	Description
18	SG795245	1	Hose ASM (Short)
19	SG795250	1	Hose ASM (Long)
20	SG715450	1	Pin-Link, Top
21	SG715875	2	Pin-Hitch
22	92-1298	2	Pin-Lynch
23	100-5389	1	Pin-Lynch
24	SG999018	1	Canister-Manual, Operators
25	322-3	2	Screw-HH
35	SG795551-03	1	Extension-Adapter 5.50"
36	SG795554-03	1	Extension-Adapter 3.50"
37	117-7124-03	1	Mount-Adapter, 90 DEG



## LH Outside Crankshaft Assembly

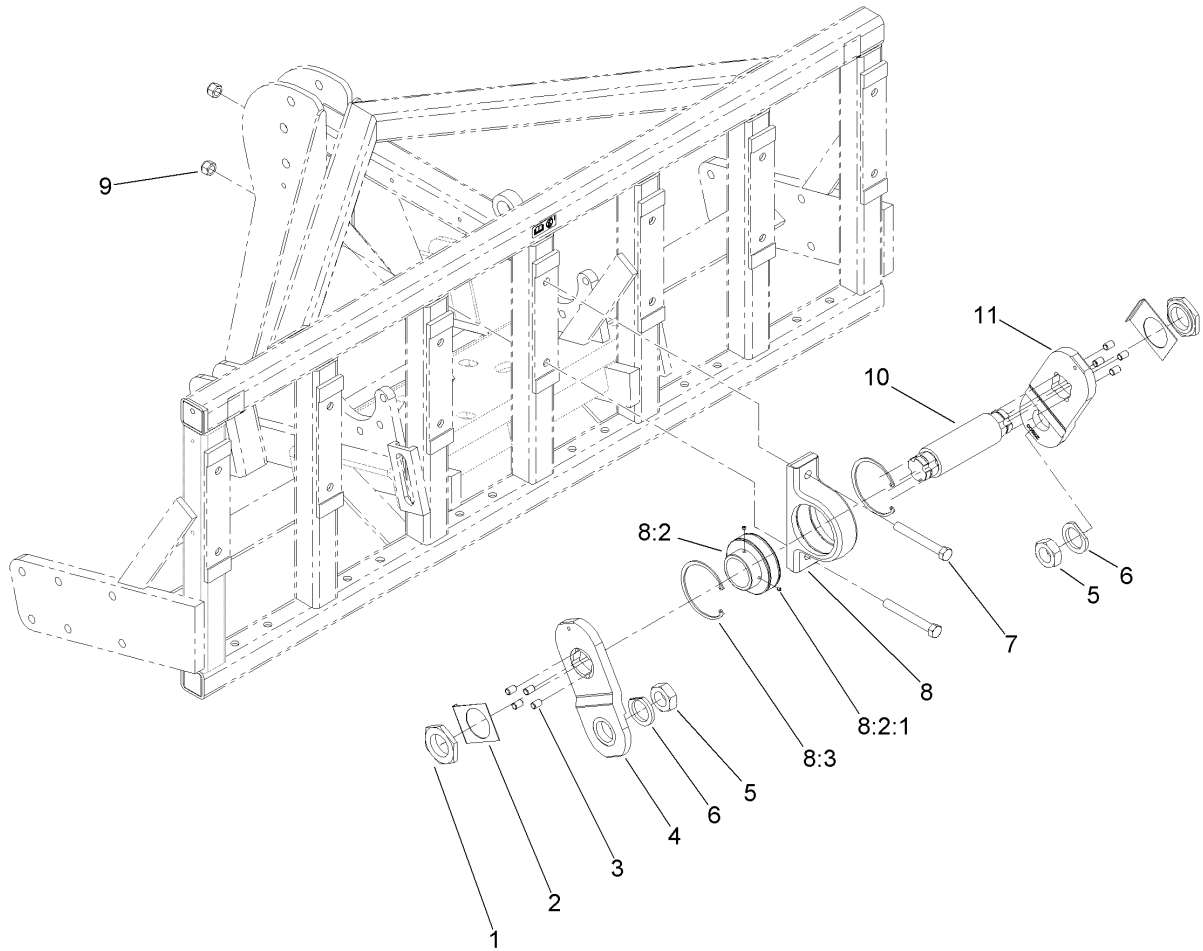
Ref	Part No.	Qty.	Description
1	SG231040	1	Brg Housing ASM
② 1:2		1	Bearing-Ball
1:2:1	99-0195	2	Screw-Set, HSH
1:3	SG232433	2	Ring-Snap
2	SG278625	2	Screw-HH
3	3296-41	2	Nut-Lock NI
4	SG211557	1	Shaft-Stub, Outside
5	SG361375	1	Nut-Hex Jam
6	SG241753	1	Washer-Crank, Clipped
7	SG215000-03	1	Arm-Crank
8	SG281240	1	Plate-Locking
9	SG261535	1	Nut-Hex

## LH Crankshaft Assembly

Ref	Part No.	Qty.	Description
1	SG261535	4	Nut-Hex
2	SG281240	4	Plate-Locking
3	SG250875	16	Pin-Dowel
4	SG210500-03	1	Arm-Crank (1/2" Drive)
5	SG315750	3	Pin-Crank
6	SG216500	2	Shaft-Crank
7	SG278625	4	Screw-HH
8	SG231040	2	Brg Housing ASM
8:2		1	Bearing-Ball
8:2:1	99-0195	2	Screw-Set, HSH
8:3	SG232433	2	Ring-Snap
9	3296-41	4	Nut-Lock NI
10	SG361375	1	Nut-Hex Jam
11	SG241753	1	Washer-Crank, Clipped
12	SG212500-03	2	Arm-Crank, LH (1/2" Drive)
13	3253-7	4	Washer-Lock
14	SG271517	4	Screw-HH
15	SG200500-03	1	Arm-Crank (1/2" Drive)
16	SG234149	2	Spacer-Tube
17	SG243300	1	Spacer-Sprocket
18	SG214025	1	Sprocket-Bore, Plain

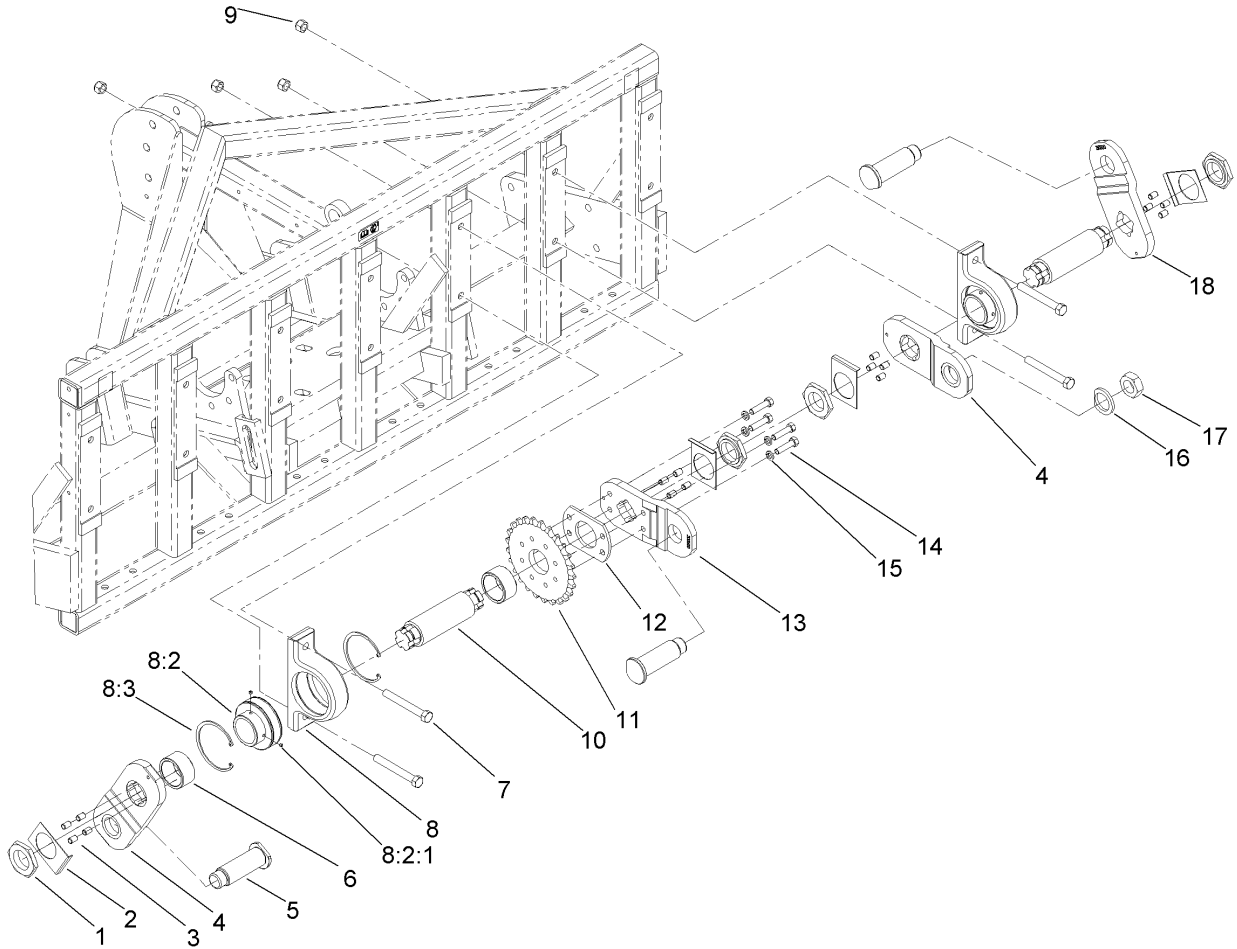
--	--	--	--



## Center Crankshaft Assembly

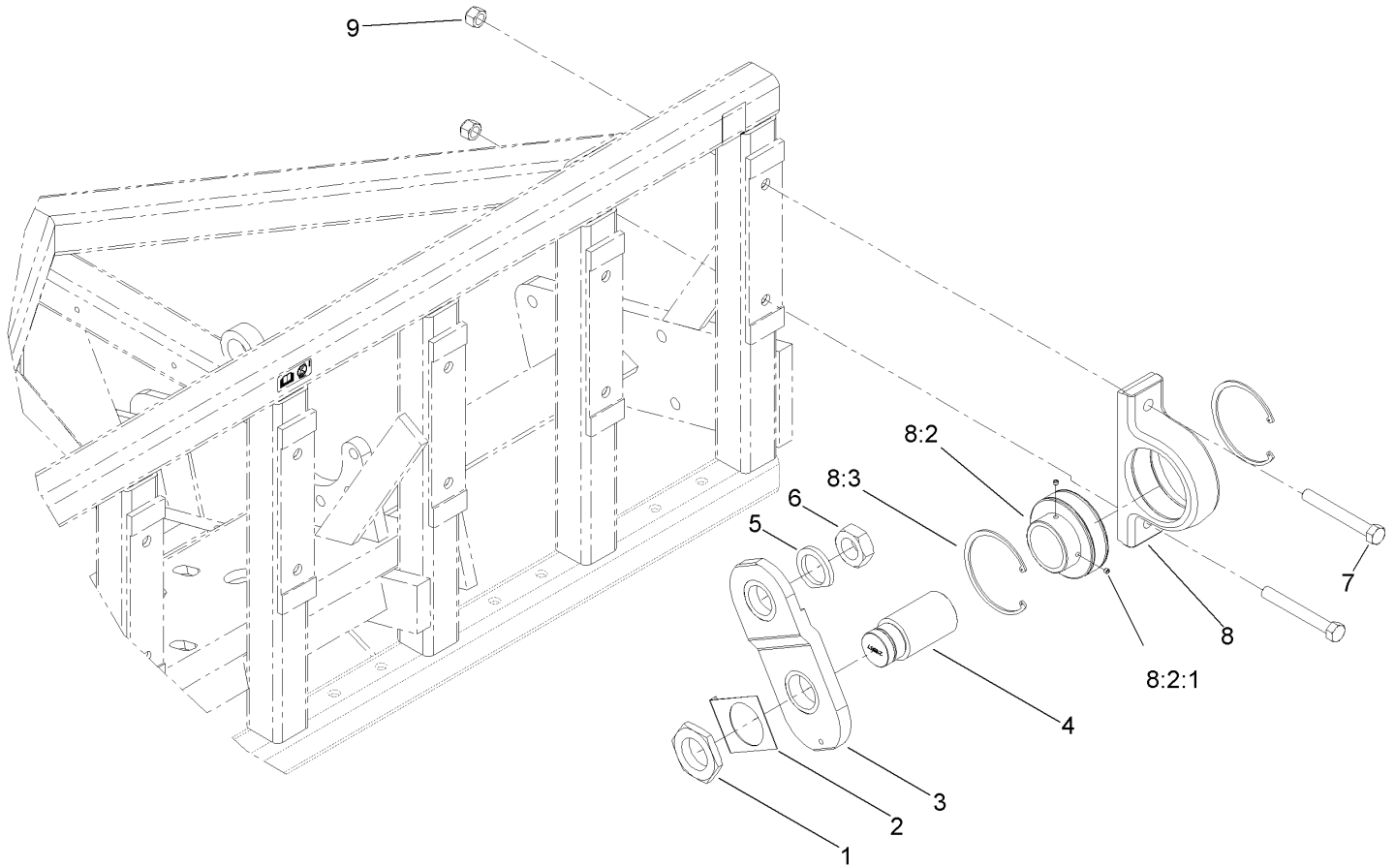
Ref	Part No.	Qty.	Description
1	SG261535	2	Nut-Hex
2	SG281240	2	Plate-Locking
3	SG250875	8	Pin-Dowel
4	SG210500-03	1	Arm-Crank (1/2" Drive)
5	SG361375	2	Nut-Hex Jam
6	SG241753	2	Washer-Crank, Clipped
7	SG278625	2	Screw-HH
8	SG231040	1	Brg Housing ASM
8:2		1	Bearing-Ball
8:2:1	99-0195	2	Screw-Set, HSH
8:3	SG232433	2	Ring-Snap
9	3296-41	2	Nut-Lock NI
10	SG216500	1	Shaft-Crank
11	SG211500-03	1	Arm-Crank, RH (1/2" Drive)

--	--	--	--



## RH Crankshaft Assembly

Ref	Part No.	Qty.	Description
1	SG261535	4	Nut-Hex
2	SG281240	4	Plate-Locking
3	SG250875	16	Pin-Dowel
4	SG211500-03	2	Arm-Crank, RH (1/2" Drive)
5	SG315750	3	Pin-Crank
6	SG234149	2	Spacer-Tube
7	SG278625	4	Screw-HH
8	SG231040	2	Brg Housing ASM
8:2		1	Bearing-Ball
8:2:1	99-0195	2	Screw-Set, HSH
8:3	SG232433	2	Ring-Snap
9	3296-41	4	Nut-Lock NI
10	SG216500	2	Shaft-Crank
11	SG214025	1	Sprocket-Bore, Plain
12	SG243300	1	Spacer-Sprocket
13	SG200500-03	1	Arm-Crank (1/2" Drive)
14	SG271517	4	Screw-HH
15	3253-7	4	Washer-Lock
16	SG241753	1	Washer-Crank, Clipped
17	SG361675	1	Pin-Crank, Connecting Rod
18	SG210500-03	1	Arm-Crank (1/2" Drive)

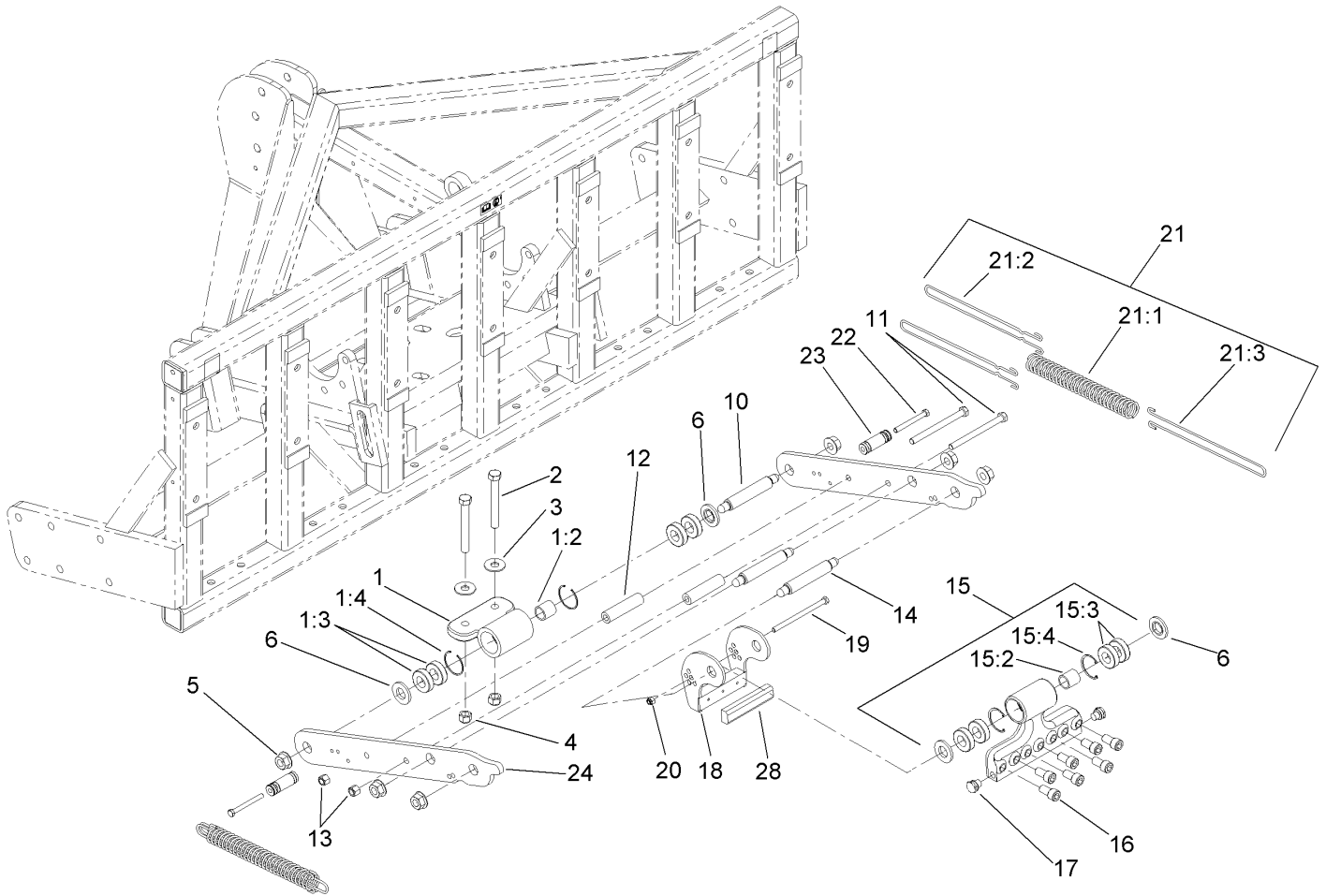



## RH Outside Crankshaft Assembly

Ref	Part No.	Qty.	Description
1	SG261535	1	Nut-Hex
2	SG281240	1	Plate-Locking
3	SG215000-03	1	Arm-Crank
4	SG211557	1	Shaft-Stub, Outside
5	SG241753	1	Washer-Crank, Clipped
6	SG361375	1	Nut-Hex Jam
7	SG278625	2	Screw-HH
8	SG231040	1	Brg Housing ASM
8:2		1	Bearing-Ball
8:2:1	99-0195	2	Screw-Set, HSH
8:3	SG232433	2	Ring-Snap
9	3296-41	2	Nut-Lock NI

--	--	--	--

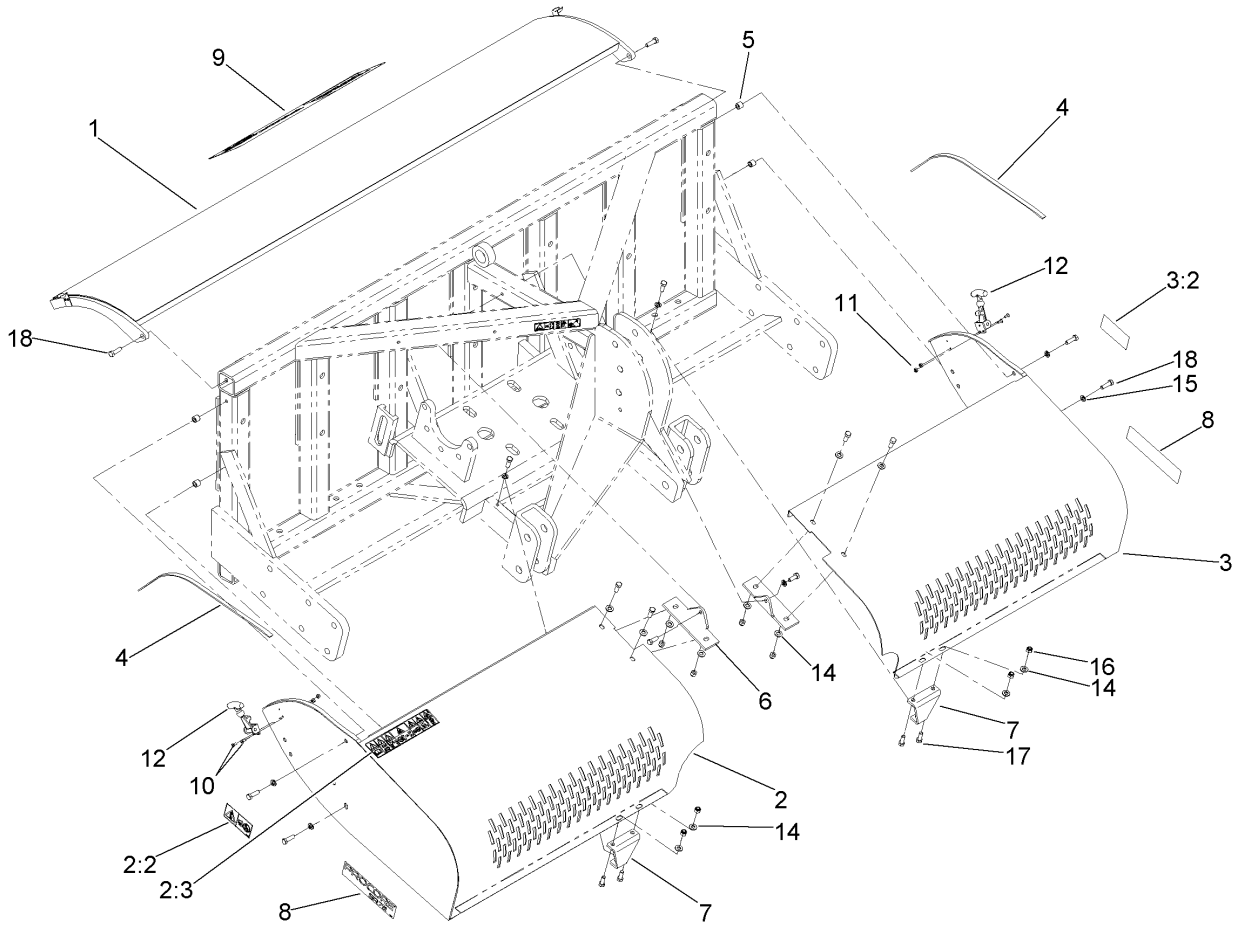




## Lower Arm and Hinge Assembly

Ref	Part No.	Qty.	Description
1	SG142000	6	Hinge ASM
1:2	SG410290	1	Bushing-Inner
1:3	SG431012	4	Bearing-Ball
1:4	32120-65	2	Ring-Snap
2	SG471645	12	Bolt-Hinge
3	3256-7	12	Washer-Flat
4	3296-41	12	Nut-Lock NI
5	32128-53	36	Nut-HF
6	SG441240	24	Bushing-Outer
10	SG410500	12	Pin-Wrist, Short
11	325-20	12	Screw-HH
12	SG434118	12	Spacer-Arm, Linkage
13	3296-23	12	Nut-Lock, NI
14	SG410437	6	Pin-Wrist, Head
15	SG145100	6	Tine Head ASM
15:2	SG410290	1	Bushing-Inner
15:3	SG431012	4	Bearing-Ball
15:4	32120-65	2	Ring-Snap
16	SG471620	42	Head-Tine, Bolt (Long)
17	SG483125	12	Holder-Spring, Front
18	SG492000-03	6	Bracket-Camber
19	323-22	6	Screw-HH
20	3296-39	6	Nut-Lock, NI

Ref	Part No.	Qty.	Description
21	SG148160	12	Spring ASM
21:1	SG481512	1	Spring-Compression
21:2	SG482016	2	Wire-Bar, Draw
21:3	SG482017	1	Wire-Bar, Draw
22	323-15	12	Screw-HH
23	SG484351	12	Post-Rear, Spring
24	SG434117-03	12	Plate-Arm, Linkage
25	SG885222	1	Wrench-Allen, 1/2 Inch
28	SG491000	6	Pad-Bumper



## Cover Assembly

Ref	Part No.	Qty.	Description
1	SG651066-03	1	Back Cover ASM
2	117-7108	1	RH Screen ASM
2:2	117-7051	1	Decal-Danger, Keep Away Ce
2:3	117-7050	1	Decal-Warning, Ce
3	117-7109	1	LH Screen ASM
3:2	117-7051	1	Decal-Danger, Keep Away Ce
4	SG483257	2	Strip-Foam
5	SG555052	4	Spacer
6	SG678915-03	2	Clip-Screen, Top
7	SG616730-03	2	Bracket-Screen, Front
8	117-7087	2	Decal
9	117-7058	1	Decal
10	3274-29	4	Screw-HSFH
11	3296-2	4	Nut-Lock, NI
12	SG650006	2	Strap-Hood
14	3256-24	12	Washer-Flat
15	3253-21	8	Washer-Lock
16	3296-39	8	Nut-Lock, NI
17	323-6	8	Screw-HH
18	323-7	8	Screw-HH


## NOTES

# NOTES

# NOTES

