



# Right-Hand, Left-Hand & Front Replacement Mowers

## Groundsmaster 4000-D Traction Unit

Model No. 30415—Serial No. 310000001 and Up

Model No. 30416—Serial No. 310000001 and Up

Model No. 30417—Serial No. 310000001 and Up

## Installation Instructions

### Remove Hydraulic Motor (Front or Side Decks)

1. Position machine on a level surface, lower cutting units to the ground, engage parking brake, be sure traction pedal is in neutral position, PTO lever in OFF position, shut engine OFF and remove key from switch.
2. Remove bolts securing hydraulic motor to deck (Figure 1). Lift motor off deck and lay it on a clean, out of the way, surface. Do not damage aluminium coupler.

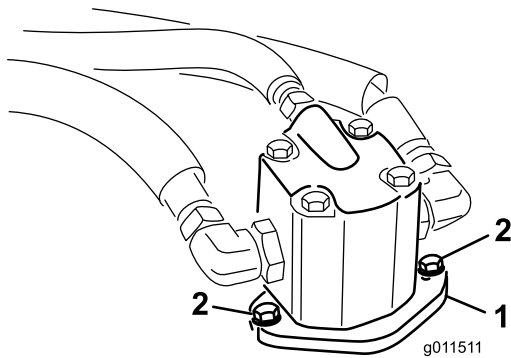


Figure 1

1. Hydraulic motor
2. Mounting bolts

3. Remove elastomeric spider from inside pulley coupler. Inspect for wear and replace if worn. Otherwise, retain for installation on new front deck (Figure 2).

**Note:** Inspect spider hub for wear and replace if worn (Figure 2).

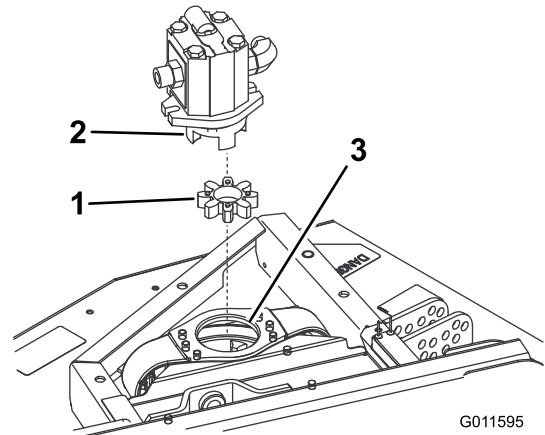


Figure 2

1. Spider
2. Spider hub
3. Pulley coupler

### Replace Front Mower Deck

1. Remove hair pin cotters and clevis pins securing height-of-cut chains to rear of deck (Figure 3). Retain hair pin cotters and clevis pins for installation on new front deck.

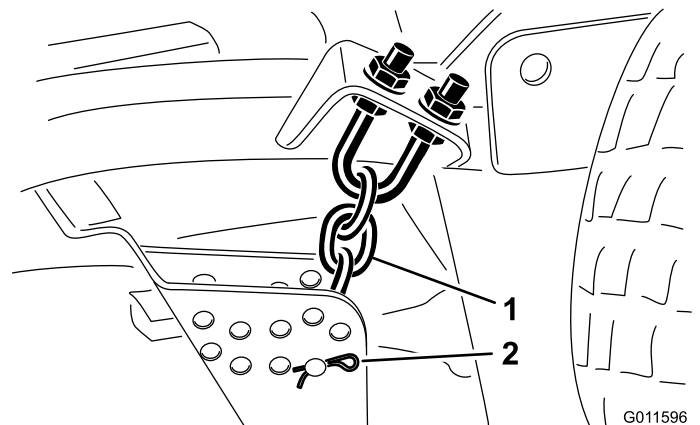
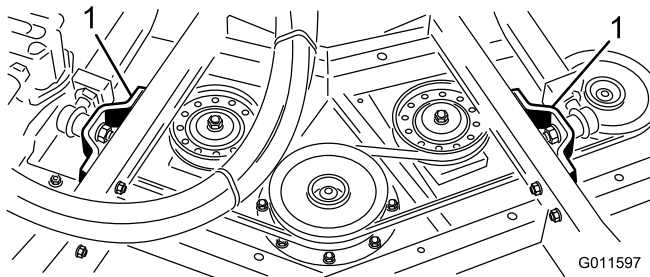


Figure 3

1. Height of cut chain
2. Clevis pin & hair pin cotter

2. Remove bolts, washers and locknuts securing each lift arm ball joint mount to cutting unit castor arm tube (Figure 4).



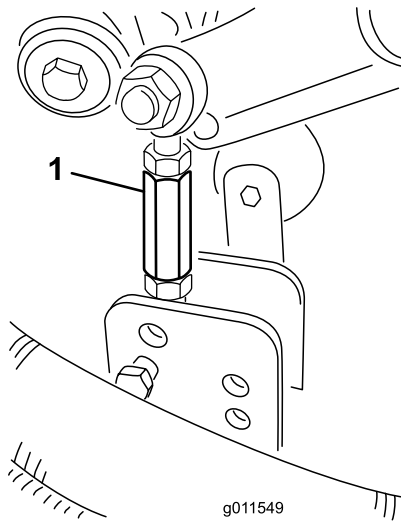
**Figure 4**

1. Lift arm ball joint mount (2)

3. Move mower deck away from traction unit.
4. Slide new mower deck into position and mount it to traction unit by reversing procedure.

## Replace Side Mower Deck

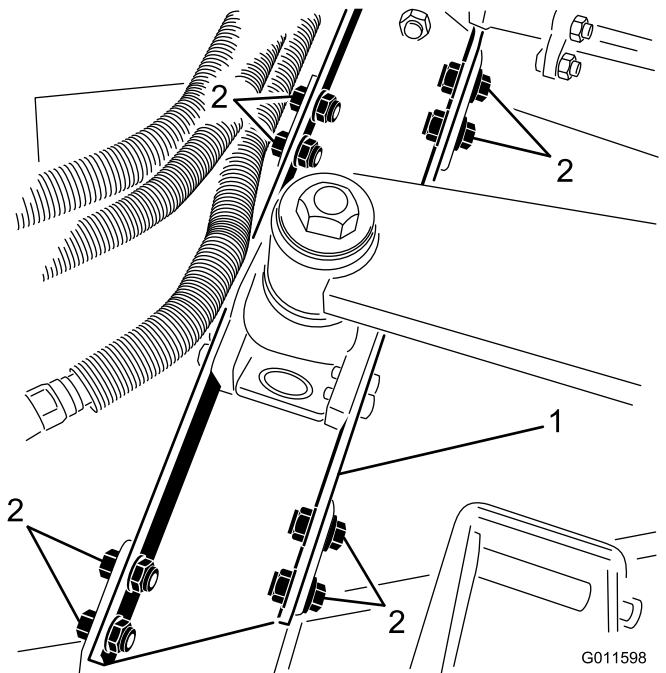
1. Remove hairpin cotter and clevis pin securing height of cut link to height of cut bracket on deck (Figure 5).



**Figure 5**

1. Height of cut link

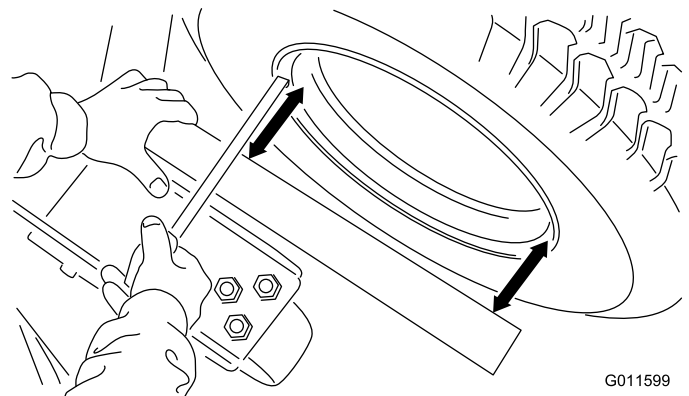
2. Remove (8) bolts, washers and locknuts securing lift arm mount to mower deck brackets (Figure 6).



**Figure 6**

1. Lift arm mount
2. Mounting bolts, washers & locknuts (8)

3. Move mower deck away from traction unit.
4. Slide new mower deck into position and mount it to traction unit by reversing procedure.
5. Check deck alignment to traction unit as follows:
  - A. Make sure the machine is on a level hard surface.
  - B. Place a square or straight edge against the deck weldment that contains the castor fork assembly (Figure 7). Do not use the caster fork assembly itself.

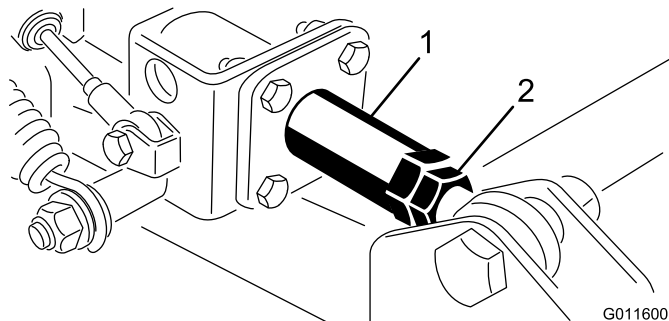


**Figure 7**

- C. Measure from the inset bead of the rim (not the outer edge of the rim) to the straight edge at two locations as indicated in Figure 7. Rim and paint irregularities make the outer edge an unreliable point of measure. These two measurements

should be the same within a tolerance of 1/8 inch (3 mm).

- D. If misalignment is detected, loosen the jam nut on the rod-end of the wing deck shock arm assembly (Figure 8). Adjust coupler to correct, which will freely rotate inside the shock absorption tube. All adjustments must be made with the rod end of the shock arm bolted to the deck.



**Figure 8**

1. Coupler

2. Jam nut

- E. Raise and lower the deck and recheck dimensions for correct alignment. Tighten jam nut to 114 ft-lbs. (155 N-m) on the shock arm assembly.

**Note:** Due to differences in grass conditions and the counterbalance setting of traction unit, it is advised that grass be cut and appearance checked before formal cutting is started. Refer to Operator's Manual for deck leveling procedures.



**Count on it.**