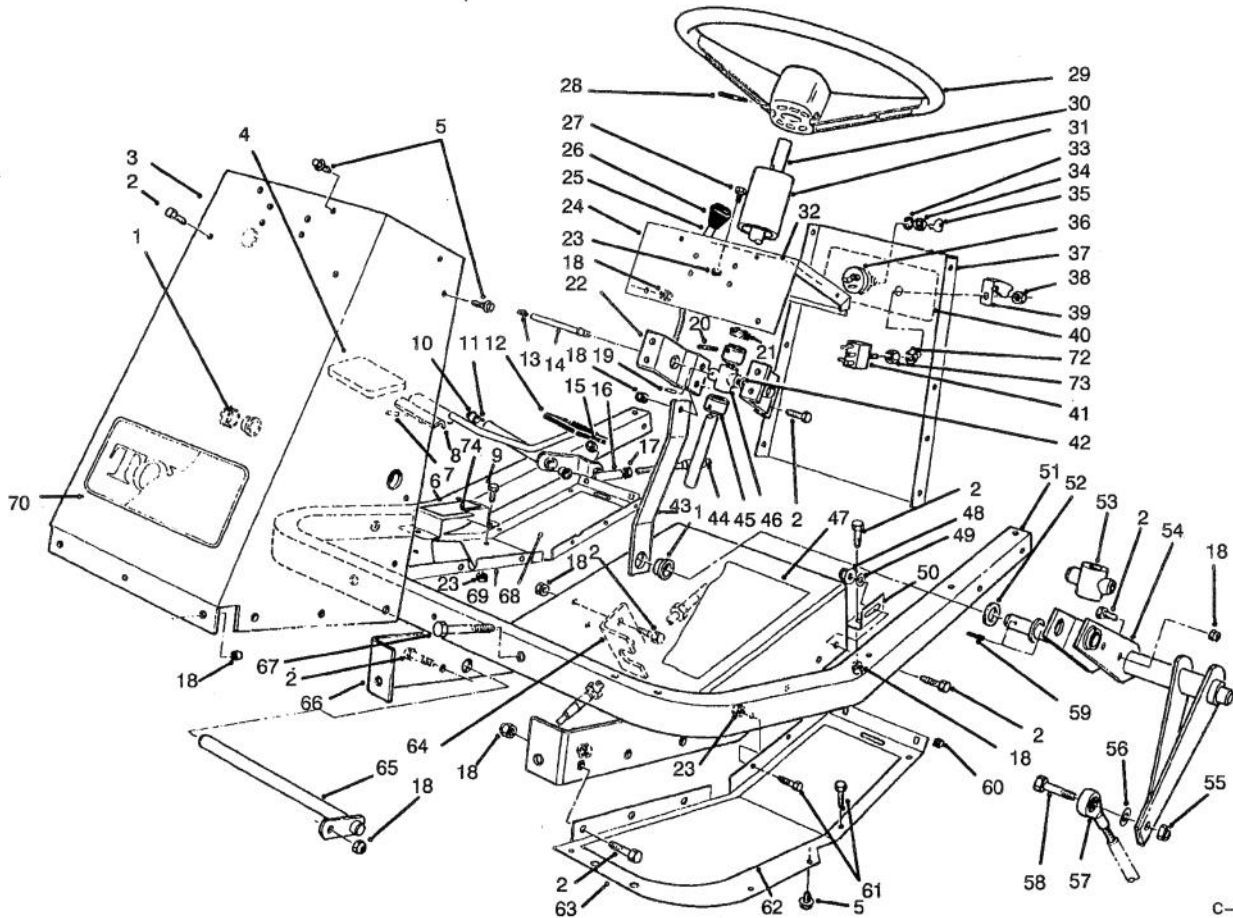




MODEL NO. 30610-591300 & UP

PARTS CATALOG

PROLINE 120

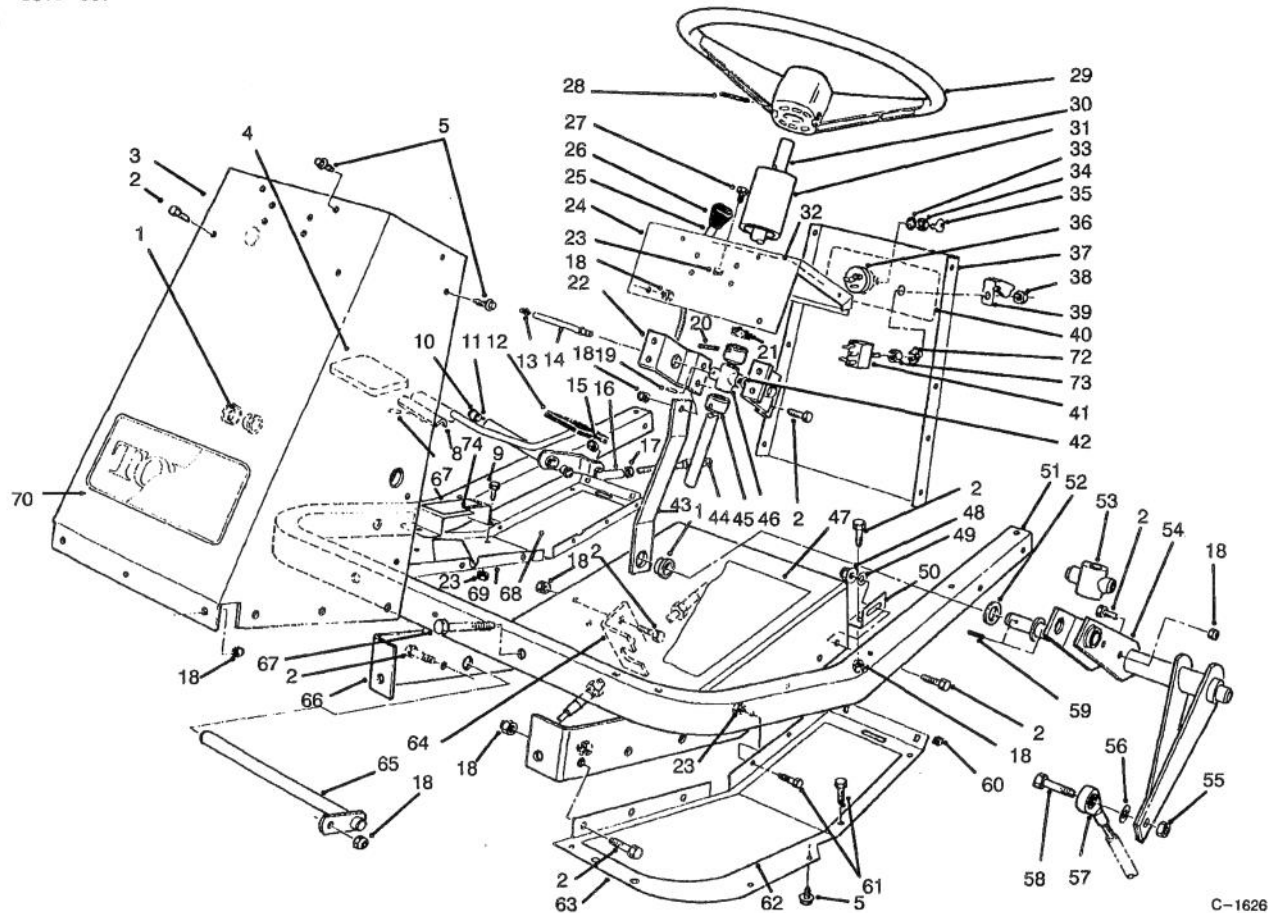


C-1626

FRAME & STEERING ASSEMBLY

Ref. No.	Part No.	Description	No. Used
1	27-9080	Bushing	3
2	322-4	Screw - Hex. Hd.	19
3	54-1900	Tower - Front	1
4	49-6470	Pad - Accelerator	1
5	46-8560	Screw - Hex. Hd.	25
6	80-4930	Footrest - Pedal	1
7	32121-51	Pin - Roll	1
8	80-4920	Pedal - Accelerator	1
9	321-3	Screw - Hex. Hd.	2
10	256-156	Bushing	2
11	74-0110	Pedal - Traction (Incl. Ref. #10)	1
12	49-6430	Pad - Reverse	1
13	302-22	Fitting - Grease	1
14	59-1610	Tube - Grease Fitting	1

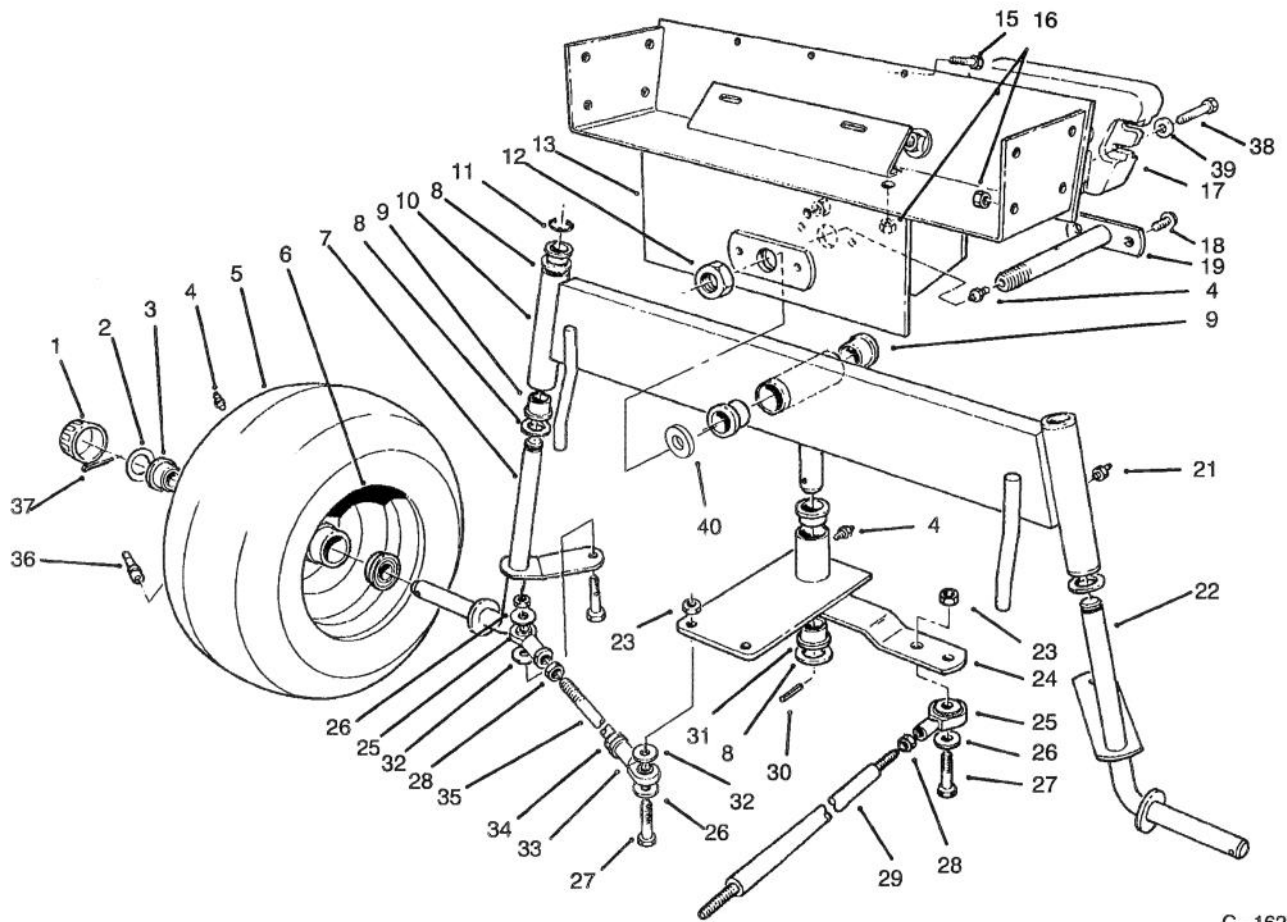
Ref. No.	Part No.	Description	No. Used
15	3296-3	Nut - Hex.	1
16	2411-34	Ball Joint	1
17	3220-1	Nut - Jam	1
18	3296-29	Nut - Lock	24
19	32121-20	Pin - Roll	1
20	32121-31	Pin - Roll	2
21	21-9260	Cover - Dust	1
22	54-1950	Bracket - Support Bearing	2
23	3296-42	Nut - Lock	16
24	54-1000	Tower - Top	1
25	54-1451	Control - Throttle, Choke	2
26	66-0120	Knob	2
27	321-2	Screw - Hex. Hd.	4
28	32121-10	Pin - Roll	1



C-1626

FRAME & STEERING ASSEMBLY

Ref. No.	Part No.	Description	No. Used	Ref. No.	Part No.	Description	No. Used
29	88-3850	Wheel - Steering	1	51	60-9140	Frame - Footrest	1
30	62-6780	Shaft - Steering	1	52	3-6498	Washer - Thrust	2
31	47-1980	Cover Steering Shaft	1	53	54-2630	Follower - Steering Shaft	1
32	92-6278	Decal - Throttle Choke	1	54	54-2040	Follower Lever	1
33		Washer - Lock	1	55	3296-48	Nut - Lock	1
34		Nut - Lock	1	56	3256-4	Washer - Flat	1
35	63-8360	Key	2	57	251-304	Rod End	1
36	88-9830	Switch - Ignition (Incl. Ref. #33-35)	1	58	324-7	Screw - Hex. Hd.	1
37	92-6266	Panel - Tower Rear	1	59	32121-77	Pin Roll	2
38	113179	Nut	1	60	32115-5	Nut - Square	4
39	113050	Cover - P.T.O. Switch	1	61	321-4	Screw - Hex. Hd.	14
40	92-6277	Decal - Switch	1	62	54-2260	Pad Footrest L.H.	1
41	116716	Switch - Clutch & Brake (Incl. Ref. # 38, 72 & 73)	1	63	54-1470	Footrest - L.H.	1
42	3290-440	Washer - Belleville	1	64	54-1770	Bracket - Cable Traction	1
43	54-1340	Link - Steering	1	65	59-1550	Pedal - Shaft	1
44	54-2640	Cable - Traction Control	1	66	60-9150	Tunnel	1
45	28-3940	Collar - Steering Shaft	2	67	322-10	Screw - Hex. Hd.	2
46	60-9050	Bearing - Steering Shaft	1	68	54-2270	Pad - Footrest R.H.	1
47	54-0880	Decal - Tunnel	1	69	80-4910	Footrest - R.H.	1
48	32128-20	Nut - Flange Lock	2	70	62-7400	Decal - Toro	1
49	3256-23	Washer - Flat	4	72	102950	Washer	1
50	54-1440	Bracket - Tunnel	2	73	105805	Nut	1
				74	82-4720	Pad - Footrest	1

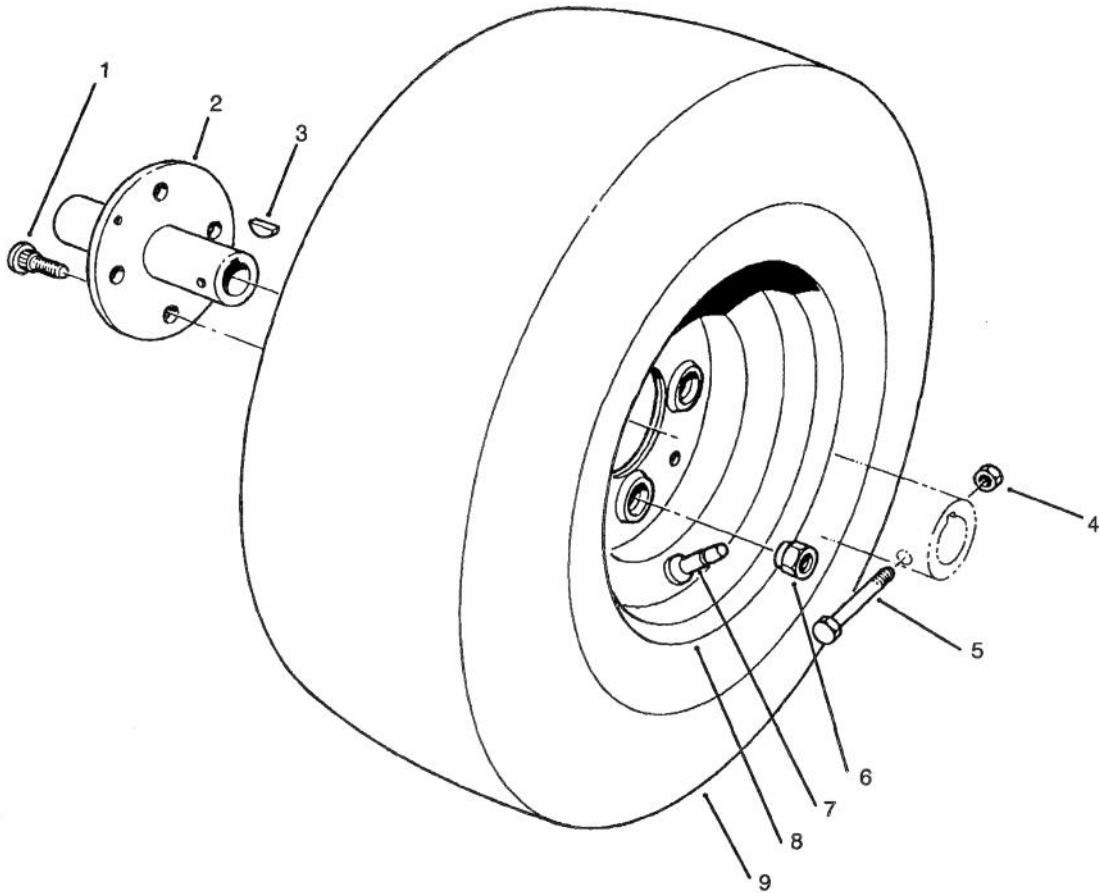


C-1627

REAR AXLE ASSEMBLY

Ref. No.	Part No.	Description	No. Used
1	61-9780	Hub Cap	2
2	28-2480	Washer - Flat	2
3	251-210	Bearing - Ball	4
4	302-5	Fitting - Grease	4
5	231-126	Tire	2
6	242-60	Rim	2
7	54-0570	Spindle R.H.	1
8	3-6498	Washer - Thrust	5
9	46-6680	Bushing	6
10	92-6255	Axle - Rear (Incl. Ref. #9 & 20)	1
11	32151-48	Ring - Retaining	2
12	3296-41	Nut - Hex.	1
13	54-0330	Frame - Rear	1
15	321-4	Screw	4
16	3296-29	Nut	8
17	24-5790	Weight - Rear	1
18	32144-15	Screw	2
19	59-1500	Pivot - Axle	1
21	302-49	Fitting - Grease	3

Ref. No.	Part No.	Description	No. Used
22	54-0560	Spindle L. H.	1
23	3296-48	Nut	5
24	92-6257	Plate - Pivot (Incl. Ref. #4 & 30)	1
25	251-305	Rod End	3
26	3256-4	Washer - Flat	7
27	324-7	Screw	5
28	3220-4	Nut - Jam	3
29	54-1491	Rod - Steering, Rear	1
30	32121-51	Pin - Roll	1
31	27-9080	Bushing	2
32	62-4420	Spacer	9
33	251-304	Rod End	2
34	3220-19	Nut - Jam	2
35	57-3100	Tie Rod - Steering	2
36	232-27	Valve Stem w/Cap	2
37	3272-12	Pin - Cotter	2
38	325-6	Screw	2
39	3253-7	Washer	2
40	3256-39	Washer	1

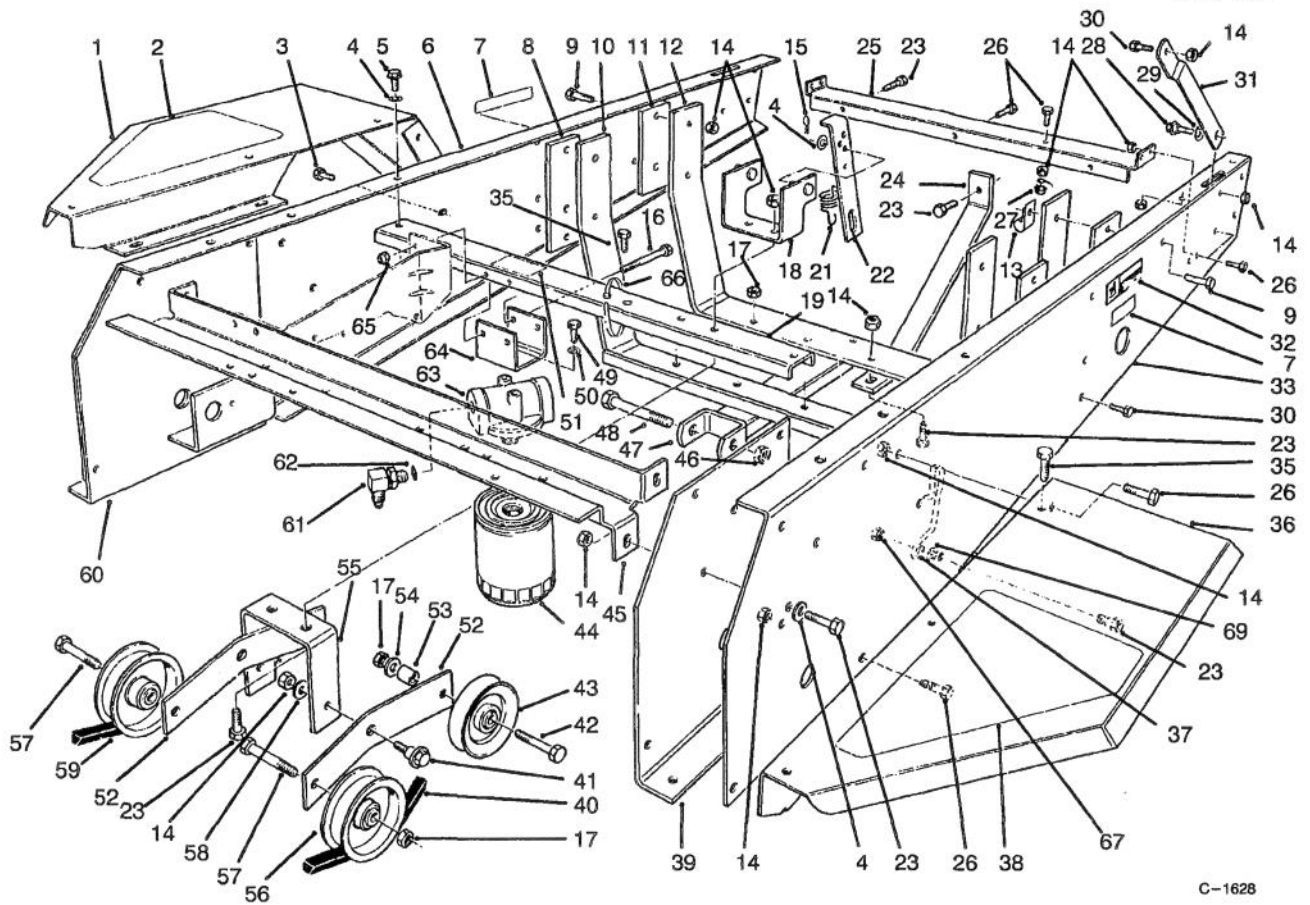


T-0071

FRONT WHEEL ASSEMBLY

Ref. No.	Part No.	Description	No. Used
1	242-71	Bolt - Wheel	8
2	54-0140	Hub - Wheel	2
3	3257-10	Key - Woodruff	2
4	3296-29	Nut - Lock	2
5	322-10	Screw	2

Ref. No.	Part No.	Description	No. Used
6	242-50	Nut	8
7	232-27	Valve Stem w/Cap	2
8	242-76	Rim	2
9	231-122	Tire	2

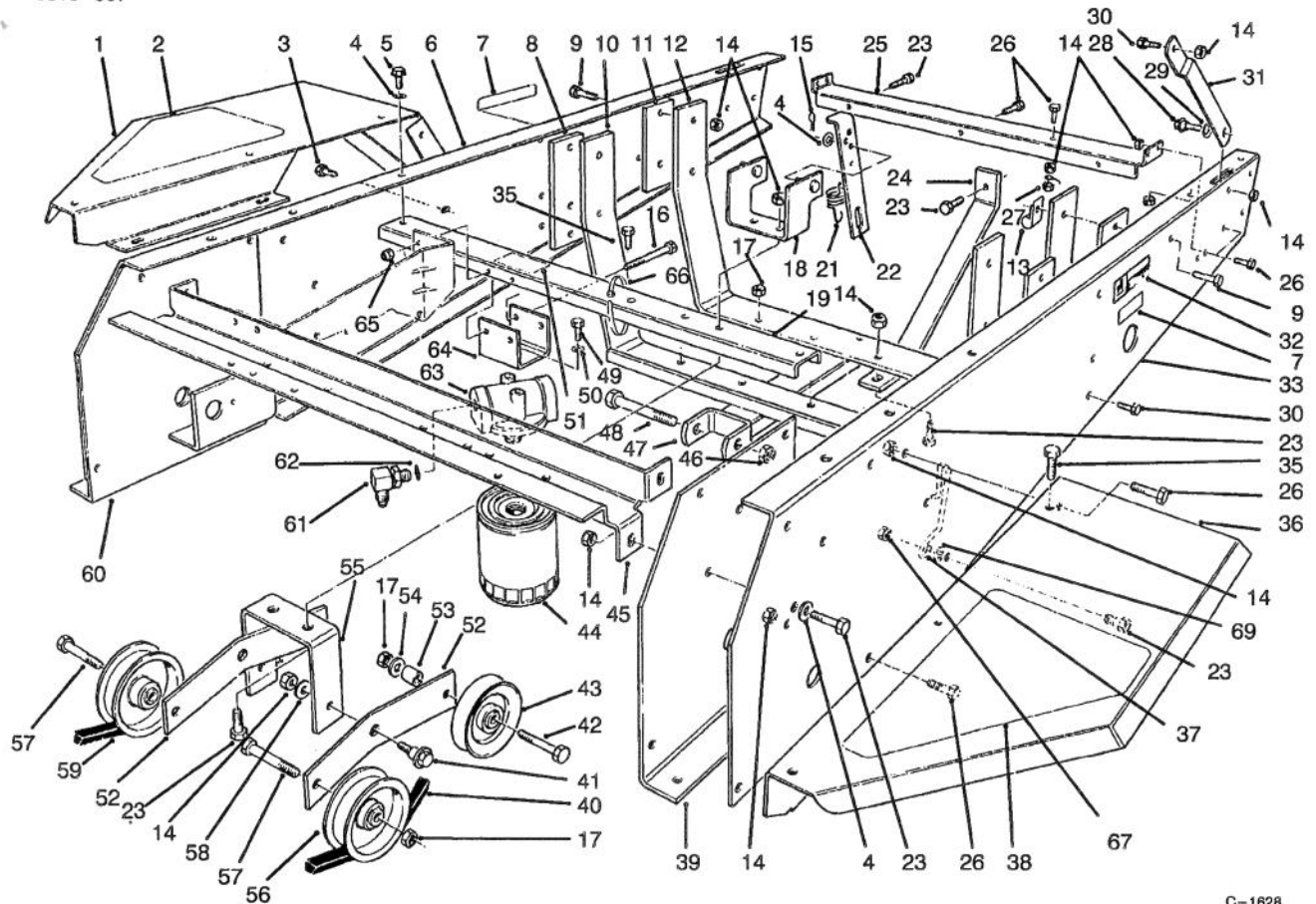


C-1628

FRAME & JACKSHAFT ASSEMBLY

Ref. No.	Part No.	Description	No. Used
1	54-1930	Fender R.H.	1
2	92-6292	Pad - Fender R.H.	1
3	3234-14	Screw	4
4	3256-23	Washer - Flat	8
5	32144-11	Screw - Thread Forming	2
6	54-1910	Channel - Side R.H.	1
7	77-3100	Decal - Caution	2
8	54-1800	Plate - Engine Front	2
9	322-6	Screw	8
10	92-6250	Mount - Engine	1
11	54-1810	Plate - Engine, Rear	2
12	92-6251	Mount - Engine	1
13	2412-100	"J" Clamp	2
14	3296-29	Nut	33
15	3290-250	Pin - Cotter	2
16	321-14	Screw	2
17	3296-44	Nut	4
18	54-2070	Anchor - Spring	1
19	54-2500	Channel - Middle	1
20	323-7	Screw	3
21	54-1410	Spring - Idler	2
22	54-1130	Link - Idler Anchor	2

Ref. No.	Part No.	Description	No. Used
23	322-6	Screw	11
24	92-6254	Bar - Tension	1
25	54-1830	Support - Shield	1
26	322-4	Screw	13
27	32149-1	Nut - Lock	1
28	27-0410	Bolt - Shoulder	2
29	3290-211	Washer - Spring	2
30	322-2	Screw	4
31	54-1870	Stop - Hood, Lower	2
32	54-0910	Decal - Warning	1
33	54-1920	Channel - Side L.H.	1
35	46-8560	Screw	7
36	54-1940	Fender L.H.	1
37	55-4860	Guide - Belt	1
38	92-6293	Pad - Fender L.H.	1
39	54-0460	Axle Stand - L.H.	1
40	54-1380	Jackshaft - "V" Belt	1
41	19-1470	Bolt - Shoulder	2
42	323-11	Screw	2
43	62-4530	Idler - "V" Belt	2
44	54-0110	Filter - Transmission Oil	1
45	54-1010	Channel - Front	1

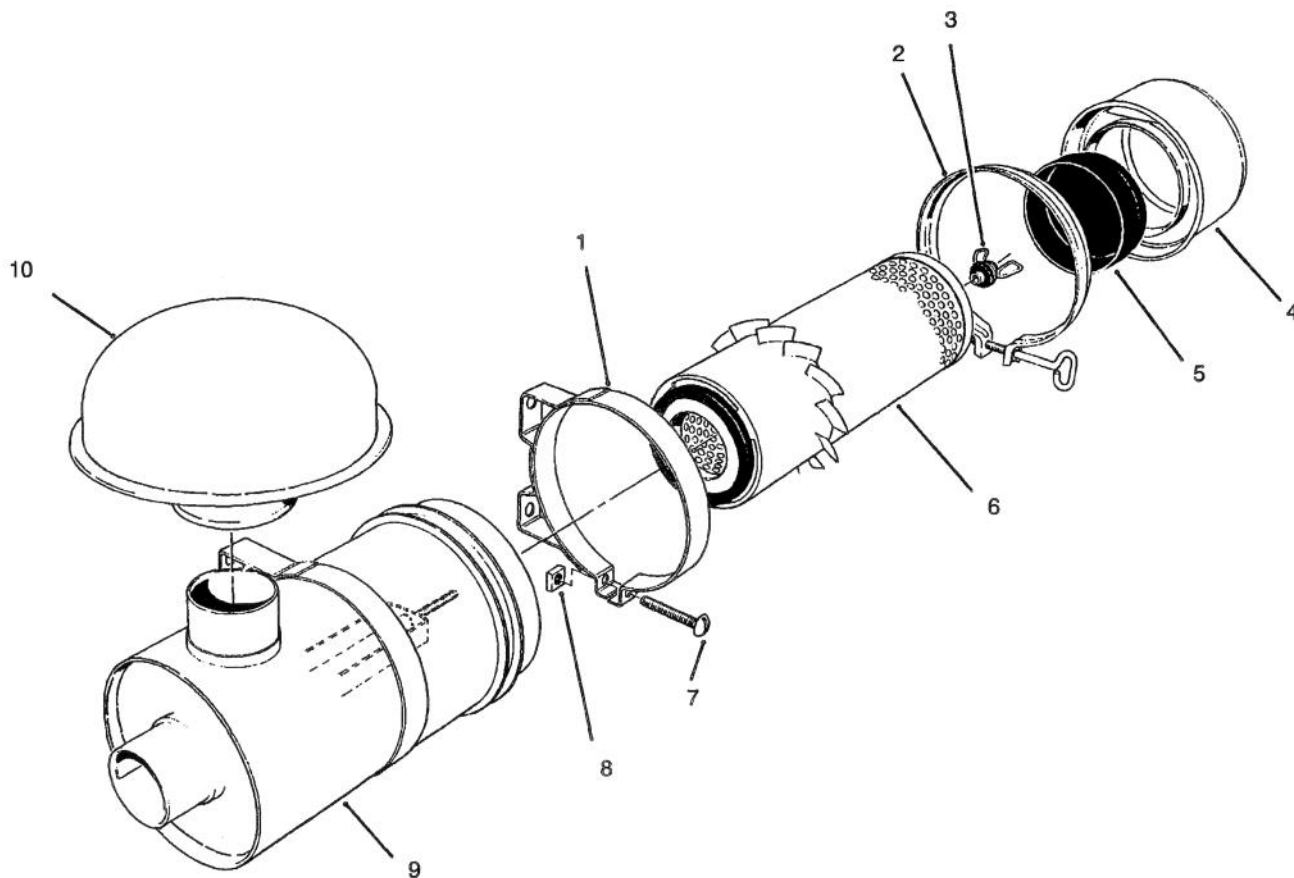


C-1628

FRAME & JACKSHAFT ASSEMBLY (Continued)

Ref. No.	Part No.	Description	No. Used
46	3296-61	Nut	1
47	92-6252	Mount - Cylinder	1
48	327-24	Screw	1
49	321-3	Screw	2
50	3253-3	Washer - Lock	2
51	53-4430	Decal - Oil	1
52	54-9200	Lever - Idler	2
53	37-7250	Spacer	2
54	3256-3	Washer - Flat	2
55	54-1060	Bracket - Idler Mount	1
56	62-4540	Idler - Flat	2
57	323-9	Screw	2

Ref. No.	Part No.	Description	No. Used
58	23-1120	Washer - Flat	2
59	54-1390	"V"Belt - Traction	1
60	54-0450	Axle Stand R.H.	1
61	353-371	Fitting - 90°	2
62	237-79	"O"Ring	1
63	54-0100	Filter Head Assembly	1
64	54-1120	Bracket - Filter Head	1
65	3296-42	Nut - Lock	2
66	3290-379	Cable Tie	7
67	32128-20	Nut - Flange Lock	1
69	3255-8	Washer - Lock, Ext. Tooth	1

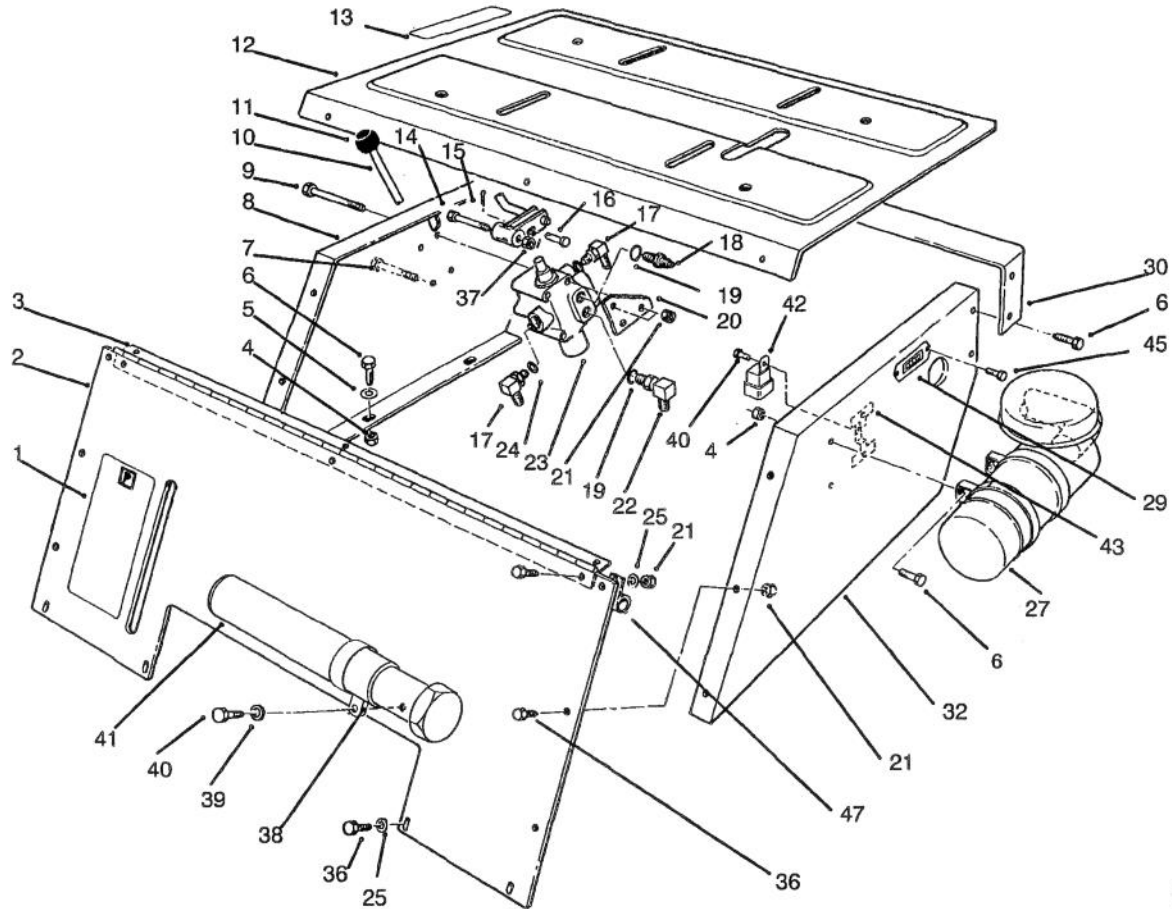


T-0248

AIR CLEANER, MODEL NO. 11-4659

Ref. No.	Part No.	Description	No. Used
1	33-1350	Band Assembly (Incl. Ref. #7 & 8)	2
2	33-1340	Clamp Assembly	1
3	33-1330	Nut Assembly	1
4	33-1320	Cup	1
5	33-1310	Baffle	1

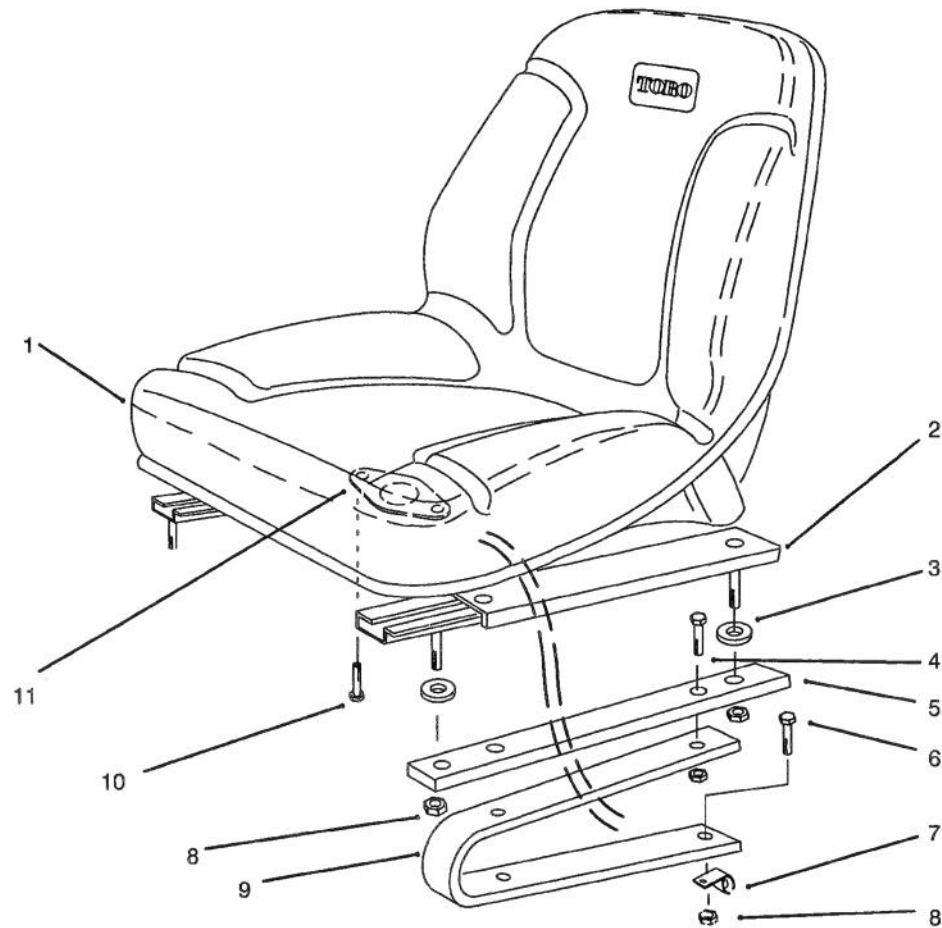
Ref. No.	Part No.	Description	No. Used
6	33-1300	Element Assembly	1
7	3258-19	Screw - Round Hd.	2
8	32107-11	Nut - Square	2
9		Body Assembly	1
10	46-7510	Hood - Intake	1



C-1629

SEAT SUPPORT ASSEMBLY

Ref. No.	Part No.	Description	No. Used	Ref. No.	Part No.	Description	No. Used
1	54-0920	Decal - Parking Brake	2	21	3296-42	Nut - Lock	19
2	80-3760	Support - Seat, Front	1	22	353-375	Fitting - 90°	1
3	54-3110	Hinge - Seat	1	23	54-0090	Valve Assembly	1
4	3296-29	Nut	12	24	237-42	"O"Ring	2
5	3256-23	Washer - Flat	6	25	3256-1	Washer - Flat	10
6	322-4	Screw	12	27	11-4659	Air Cleaner Assembly	1
7	321-14	Screw	2	29	75-6820	Meter - Hour	1
8	54-1220	Support - Seat R.H.	1	30	54-1550	Support - Hood	1
9	321-23	Screw	2	32	92-5435	Support - Seat L.H.	1
10	82-4680	Lever - Valve	1	36	321-4	Screw	5
11	233-37	Knob	1	37	3296-39	Nut	1
12	92-6281	Plate - Seat	1	38	2412-120	"R"Clamp	2
13	54-0900	Decal - Lift Control	1	39	3256-51	Washer	2
14	56-6590	Screw	1	40	32104-76	Screw	4
15	3272-6	Pin - Cotter	1	41	74-0720	Tube - Manual	1
16	283-17	Pin - Clevis	1	42	63-7590	Relay	1
17	353-511	Fitting	2	43	92-6259	Bracket	1
18	353-545	Fitting	1	45	32144-18	Screw	2
19	237-78	"O"Ring	2	47	2412-93	Clamp - Wire	1
20	82-4700	Bracket - Lever, Valve	1				

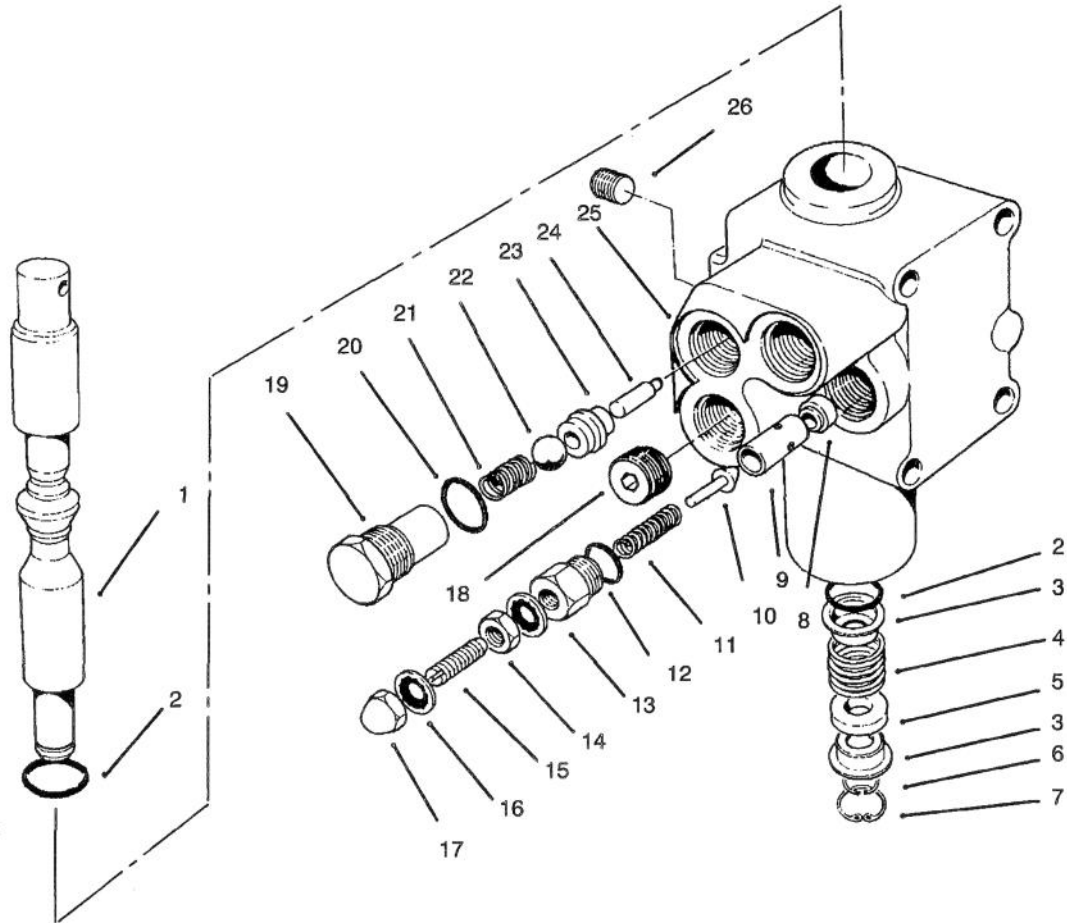


C-1603

SEAT ASSEMBLY

Ref. No.	Part No.	Description	No. Used
1	92-6280	Seat	1
2	51-0790	Slide Seat Adjust Assembly	1
*	51-0780	Slide Seat Assembly R.H.	1
3	109989	Spacer	4
4	322-4	Screw	4
5	92-6284	Plate - Adapter, Seat	2

Ref. No.	Part No.	Description	No. Used
6	322-5	Screw	4
7	2412-93	Clamp - Hose	1
8	3296-29	Nut - Lock	8
9	114263	Spring - Seat	2
10	321-4	Screw	2
11	92-6282	Switch - Seat	1

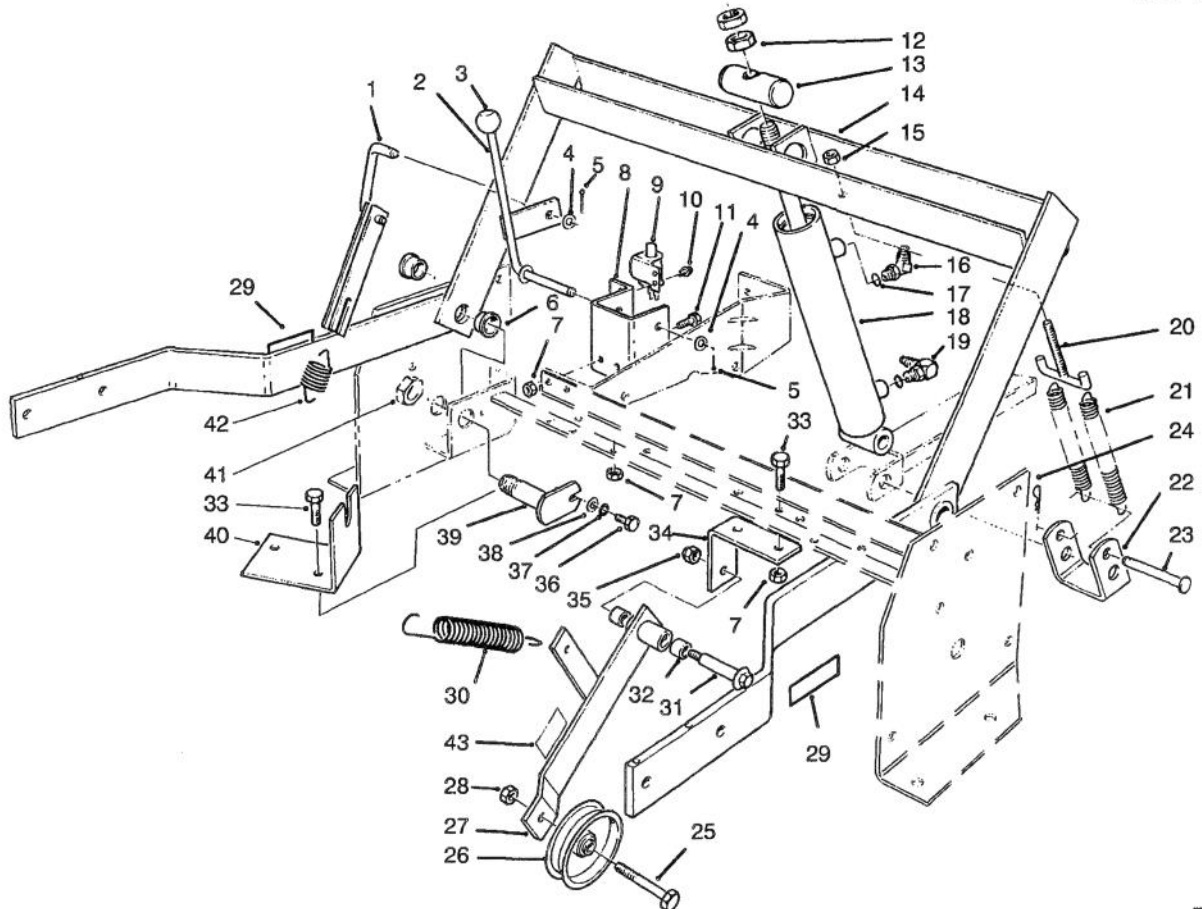


T-0075

VALVE ASSEMBLY NO. 54-0090

Ref. No.	Part No.	Description	No. Used
1	54-0260	Spool	1
2	22-8500	"O"Ring	2
3	22-8380	Retainer - Spring	2
4	22-8410	Spring	1
5	27-5200	Spacer	1
6	22-8480	Ring - Retaining	1
7	22-8490	Ring -Retaining	1
8	55-3640	Seat - Relief	1
9		Guide	1
10		Plunger	1
11		Spring	1
12		"O"Ring	1
13		Cap - PV Adjustment	1
14		Nut	1

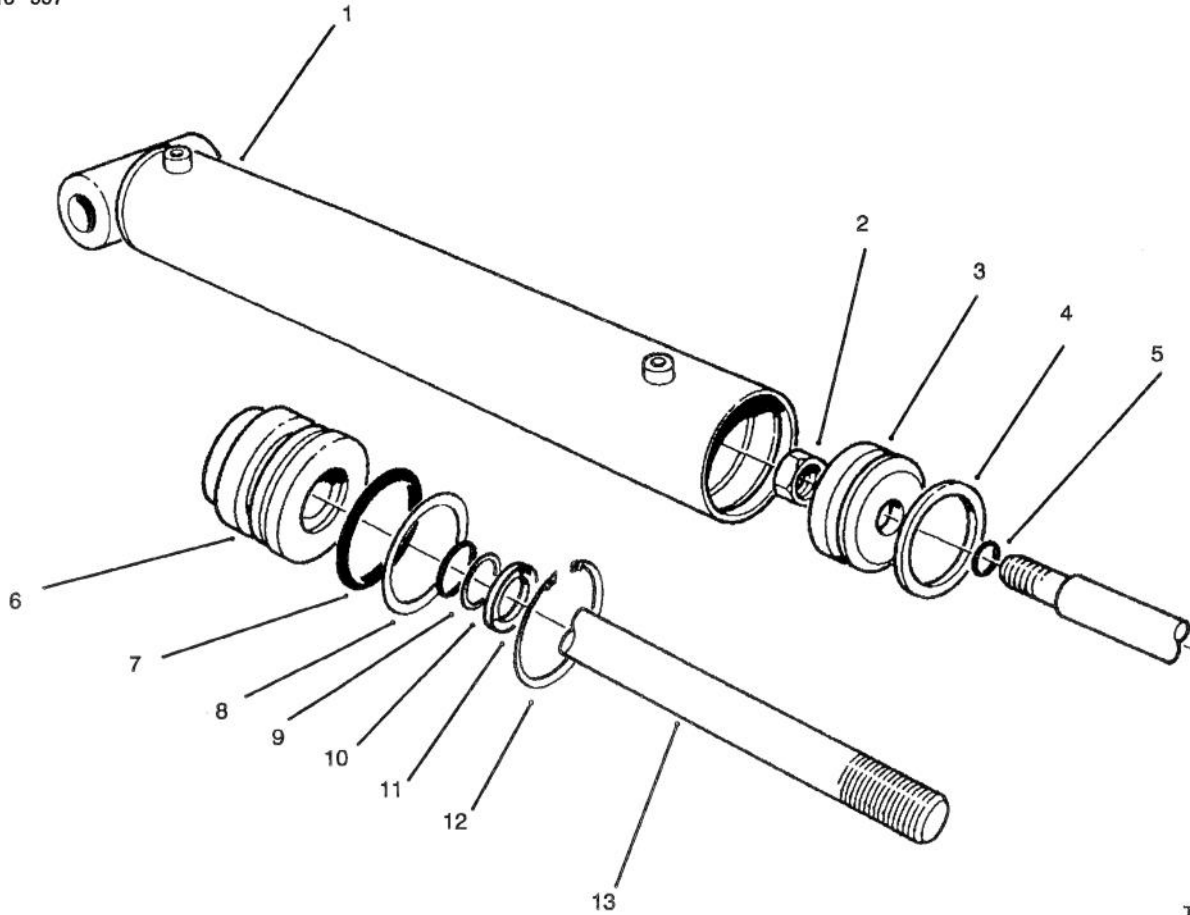
Ref. No.	Part No.	Description	No. Used
15		Screw - Set	1
16		Stat O Seal	1
17		Nut - Acorn	1
18	28-1120	Plug	1
19	22-8330	Plug	1
20	237-42	"O"Ring	2
21	22-8340	Spring	1
22	22-8350	Ball	1
23	22-8370	Seat - Check Valve	1
24	22-8360	Pin - Cam	1
25		Body	1
26	55-3650	Plug	1
*	55-3630	Adjustable Relief Valve (Incl. Ref. #9-17)	1



T-0076

PARKING BRAKE & LIFT FRAME ASSEMBLY

Ref. No.	Part No.	Description	No. Used	Ref. No.	Part No.	Description	No. Used
1	54-2120	Link - Parking Brake	1	23	283-55	Pin - Clevis	1
2	54-2110	Lever - Brake	1	24	3290-355	Pin - Cotter	1
3	233-37	Knob	1	25	323-10	Screw	1
4	3256-24	Washer - Flat	2	26	36-3220	Pulley - Idler	1
5	3272-10	Pin - Cotter	2	27	12-1109	Lever - Idler (Incl. Ref. #43)	1
6	27-9080	Bushing	4	28	3296-44	Nut	1
7	3296-29	Nut	6	29	61-3610	Decal - Warning	2
8	54-1270	Bracket - Parking Brake	1	30	54-1170	Spring - Extension	1
9	55-7120	Switch - Brake	1	31	27-6230	Bolt - Shoulder	1
10	32144-1	Screw - Thread Forming	2	32	256-154	Bushing	2
11	322-6	Screw	2	33	322-4	Screw	4
12	3220-6	Nut - Jam	2	34	55-7310	Bracket - Idler	1
13	54-2000	Pin - Pivot	1	35	3296-6	Nut	1
14	66-1570	Frame - Lift (Incl. Ref. #6)	1	36	321-2	Screw	2
15	32153-3	Nut	2	37	3253-3	Washer	2
16	353-431	Fitting - 45°	1	38	3256-1	Washer	2
17	237-78	"O"Ring	2	39	54-2100	Pin - Pivot	2
18	54-0150	Cylinder - Lift	1	40	56-6920	Bracket - Cable Extension	1
19	353-375	Fitting - 90°	1	41	3296-15	Nut	2
20	56-3320	"T"Hook	1	42	54-0960	Spring - Parking Brake	1
21	56-2760	Spring - Extension	2	43	55-4300	Decal	1
22	56-3370	Bracket - Spring	2				

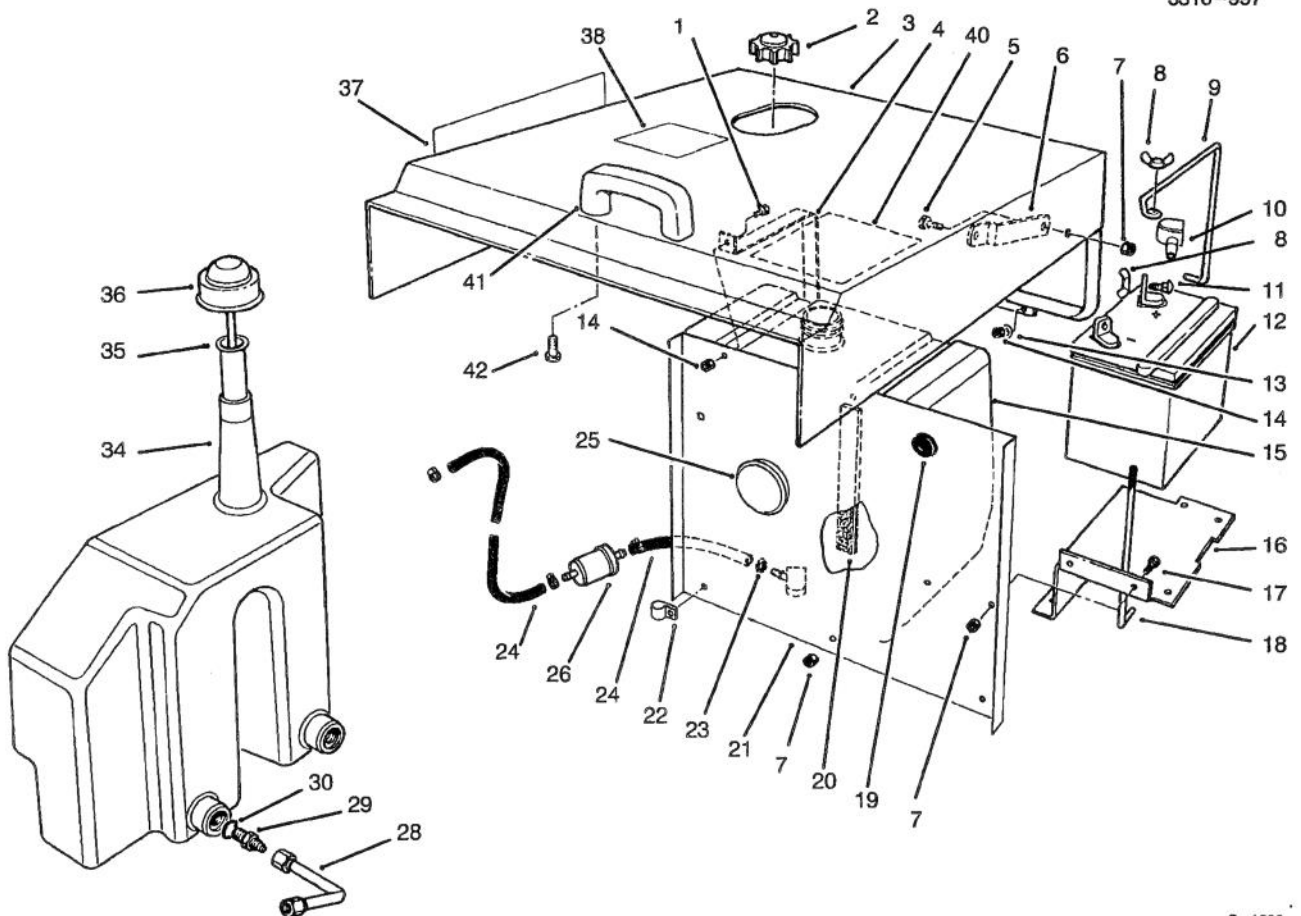


T-0077

HYDRAULIC LIFT CYLINDER NO. 54-0150

Ref. No.	Part No.	Description	No. Used
1†		Barrel	1
2	32152-10	Nut - Lock	1
3	54-0300	Piston	1
4		Uniring	1
5		"O"Ring	1
6	54-0310	Head	1
7		"O"Ring	1
8		Washer - Backup	1

Ref. No.	Part No.	Description	No. Used
9		"O"Ring	1
10		Washer - Backup	1
11		Seal - Dust	1
12	43-5220	Ring - Retaining	1
13	54-0280	Shaft	1
*	54-0290	Seal Repair Kit (Incl. Ref. #4, 5 & 7-11)	1

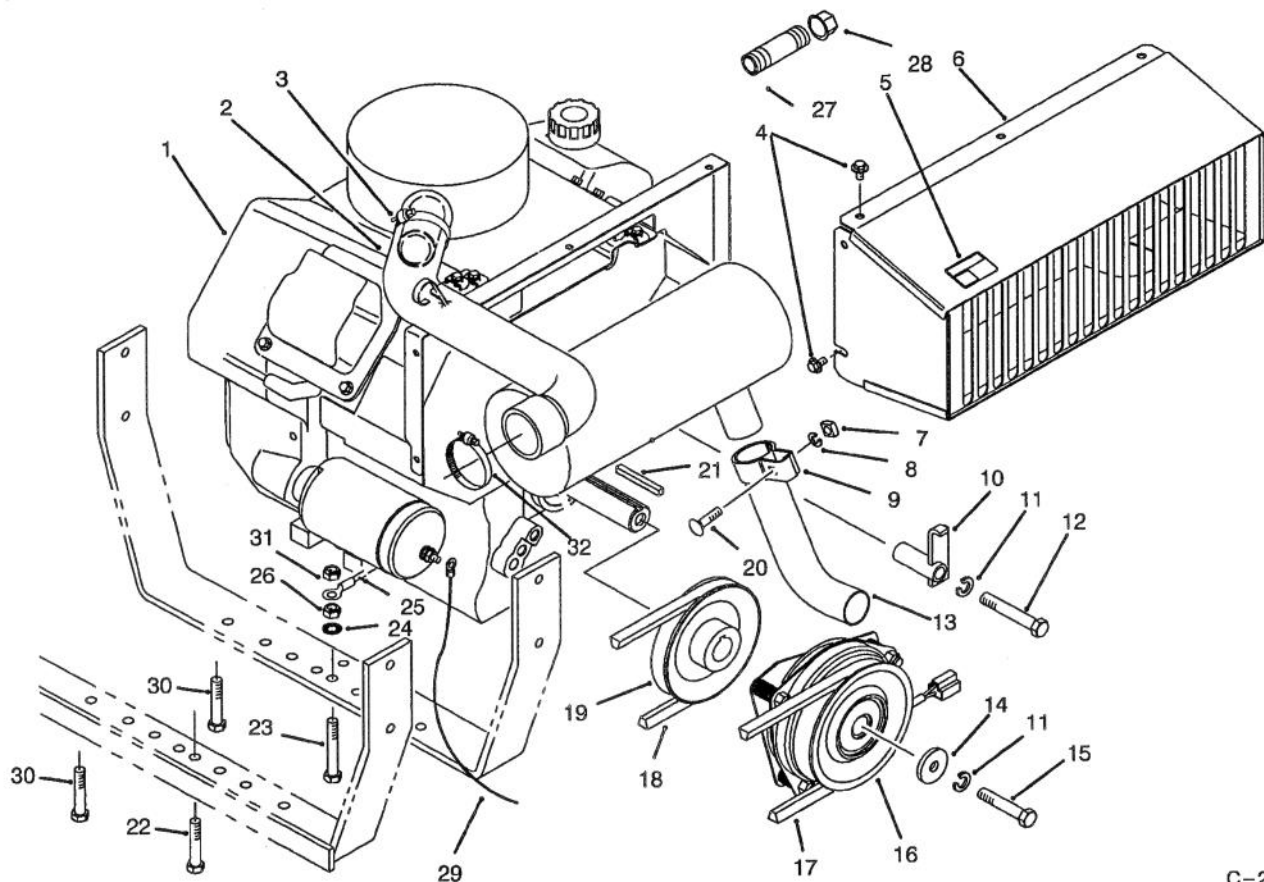


C-1630

HOOD, FUEL TANK & HYDRAULIC RESERVOIR ASSEMBLY

Ref. No.	Part No.	Description	No. Used	Ref. No.	Part No.	Description	No. Used
1	321-3	Screw - Hex. Hd.	2	21	92-6267	Shield - Heat	1
2	55-3570	Cap - Fuel	1	22	2412-100	"R" Clamp	1
3	14-4109	Hood	1	23	2412-108	Clamp - Hose	4
4	54-1880	Strap - Fuel Tank	2	24	92-6283	Hose - Fuel	2
5	322-3	Screw - Hex. Hd.	2	25	92-6274	Plug - Cap	1
6	54-1860	Stop - Hood Upper	2	26	38-8000	Filter - Fuel	1
7	3296-29	Nut - Hex.	9	28	54-2310	Hydraulic Tube Assembly Transmission to Reservoir	1
8	32103-22	Nut - Wing	3	29	353-385	Fitting - Hydraulic Straight (Incl. Ref. #30)	2
9	54-1260	Clamp - Battery	1	30	237-42	"O" Ring	2
10	77-0981	Boot - Terminal	1	34	54-2470	Reservoir - Hydraulic	1
11	3229-1	Bolt - Carriage	4	35	29-0590	Screen	1
12	82-4640	Battery	1	36	36-4950	Cap - Oil	1
13	3256-1	Washer	4	37	92-6276	Decal - ProLine 120	2
14	3296-42	Nut - Lock	8	38	92-6291	Decal - Refueling	1
15	62-4040	Tank - Fuel	1	40	92-6288	Decal - Service	1
16	54-1850	Support - Battery	1	41	65-5100	Handle	1
17	322-4	Screw - Hex. Hd.	2	42	46-8091	Screw	2
18	12-5950	Rod - Battery Support	1	*	68-7330	Decal - Danger	1
19	237-100	Grommet	1				
20	54-1890	Foam - Tank	2				

*Not Illustrated

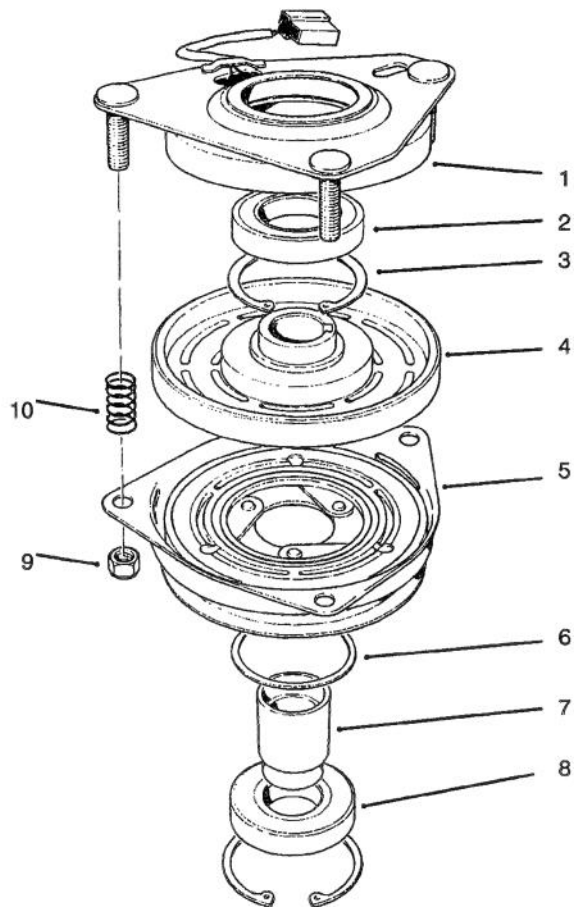


C-2344

ENGINE ASSEMBLY

Ref. No.	Part No.	Description	No. Used
1	94-1297	Engine - Kohler 20 HP Model No. CH20QS PS 64556	1
2	94-1296	Hose - Carburetor	1
3	2412-92	Clamp - Hose	2
4	48-7610	Screw	5
5	63-8440	Decal - Hot Surface	1
6	92-6260	Duct - Engine	1
7	3217-6	Nut - Square	1
8	3253-4	Washer - Lock	1
9	55-8660	Assembly - Clamp (Incl. Ref. #7, 8 & 20)	1
10	54-2160	Bracket - Anchor	1
11	3253-6	Washer - Lock	2
12	324-11	Screw - Hex. Hd.	1
13	54-2290	Pipe - Exhaust	1
14	44-8160	Washer - Flat	1
15	3212-24	Screw - Hex. Hd.	1

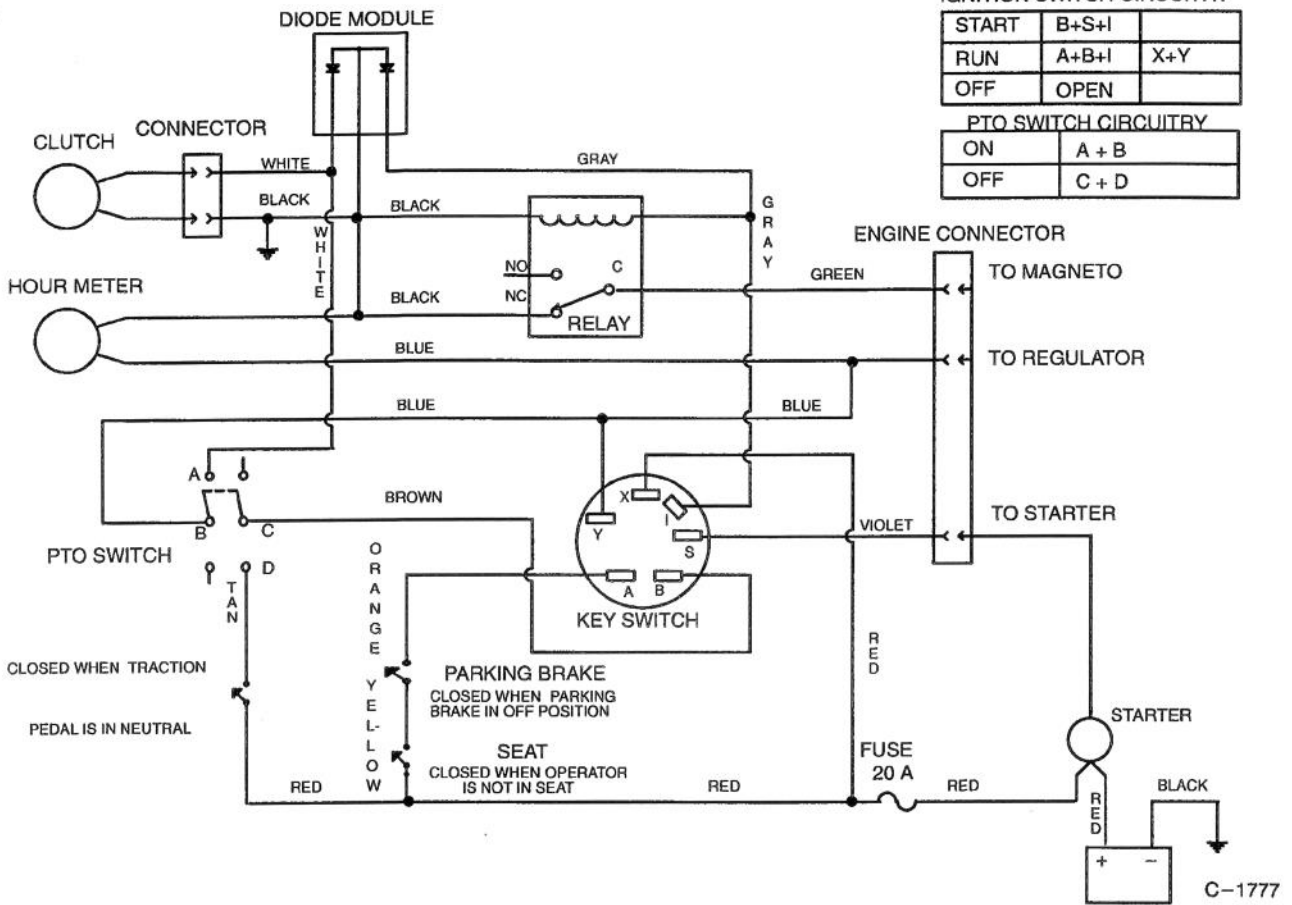
Ref. No.	Part No.	Description	No. Used
16	54-0220	Assembly - Clutch	1
17	54-1380	V-Belt	1
18	54-1390	V-Belt	1
19	54-2330	Pulley - Engine	1
20	3230-3	Bolt - Carriage	1
21	5-0930	Key	1
22	323-10	Screw - Hex. Hd.	1
23	323-12	Screw - Hex. Hd.	1
24	3254-6	Washer - Lock, Int. Tooth	1
25	92-6287	Wire - Ground	1
26	3296-39	Nut - Lock	2
27	289-46	Nipple - Pipe	1
28	288-10	Cap - Pipe	1
29	28-3894	Wire - -Positive	1
30	323-9	Screw	2
31	3290-357	Nut - Wizz	1
32	2412-92	Clamp - Hose	1



T-0080

CLUTCH ASSEMBLY NO. 54-0220

Ref. No.	Part No.	Description	No. Used	Ref. No.	Part No.	Description	No. Used
1	54-0230	Field Assembly (Incl. Ref. #2 & 3)	1	6	44-8330	Spacer - Bearing	1
2	251-292	Bearing - Field	1	7	44-8340	Collar - Bearing	1
3	44-8310	Ring - Retaining	2	8	251-291	Bearing - Pulley	1
4	44-8360	Field Coil, Rotor & Bearing (Incl. Ref. #1)	1	9	3296-6	Nut - Lock	3
5	44-8370	Armature & Pulley Assembly (Incl. Ref. #3, 6, 7 & 8)	1	10	44-8320	Spring	3

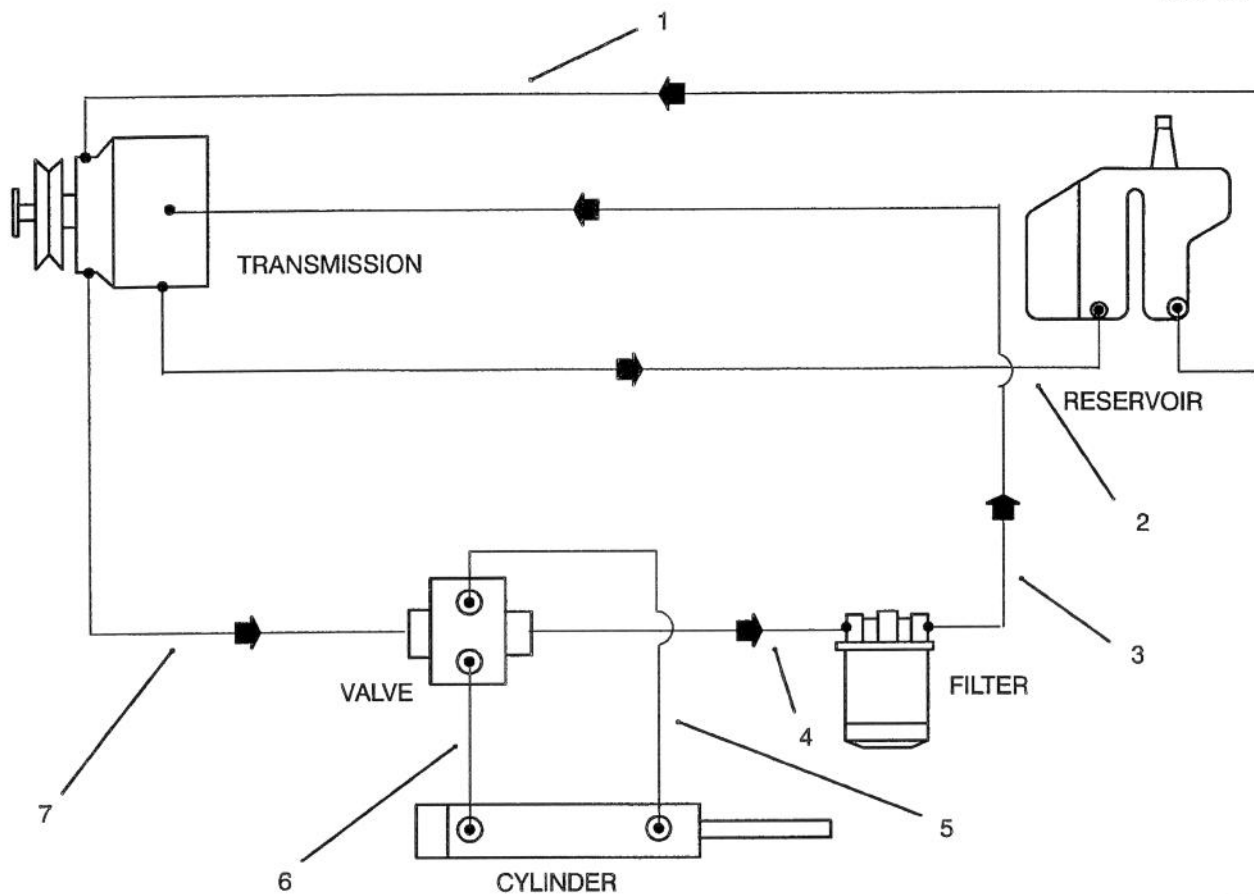


ELECTRIC SCHEMATIC

Ref. No.	Part No.	Description	No. Used
*	92-6279	Harness - Wire	1

Ref. No.	Part No.	Description	No. Used

*Not Illustrated

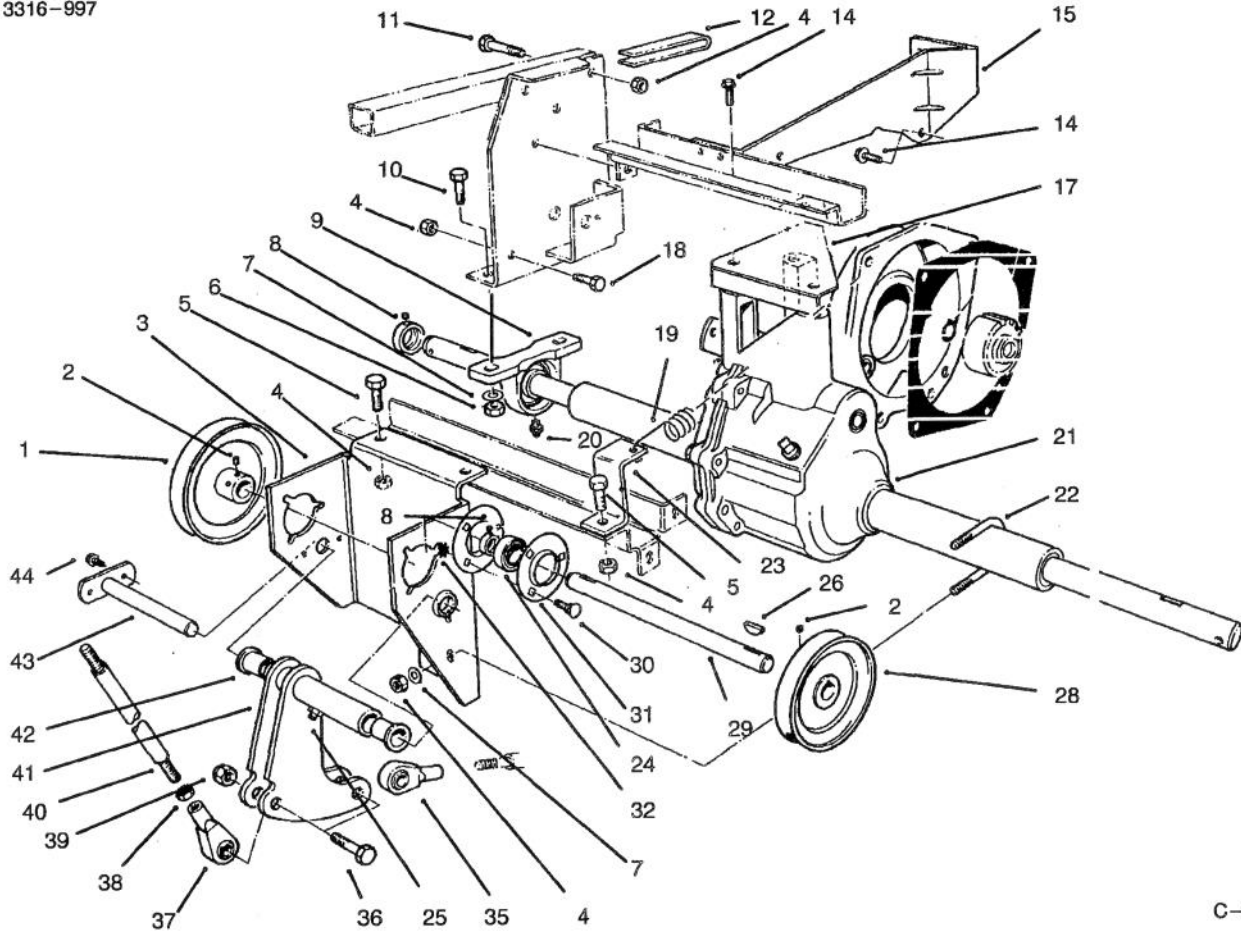


T-0084

HYDRAULIC SCHEMATIC

Ref. No.	Part No.	Description	No. Used
1	56-3390	Hydraulic Hose Assembly Reservoir to Transmission	1
2	54-2310	Hydraulic Tube Assembly	1
3	54-2580	Hydraulic Hose Assembly Filter to Transmission	1
4	54-2570	Hydraulic Hose Assembly Valve to Filter	1

Ref. No.	Part No.	Description	No. Used
5	54-2610	Hydraulic Hose Assembly Cylinder to Valve	1
6	54-2620	Hydraulic Hose Assembly Cylinder to Valve	1
7	54-2590	Hydraulic Hose Assembly Transmission to Valve	1

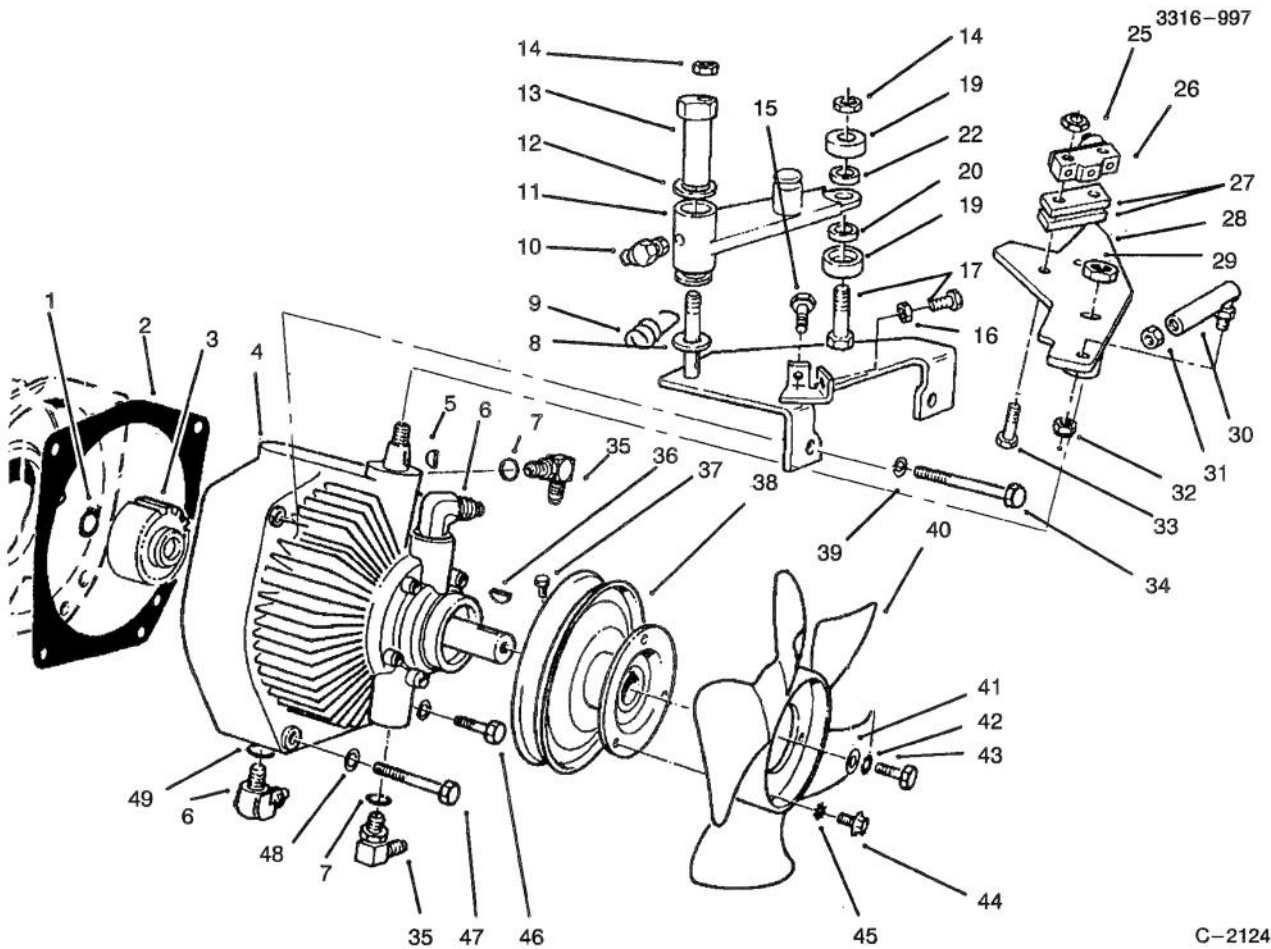


C-2123

DIFFERENTIAL ASSEMBLY

Ref. No.	Part No.	Description	No. Used	Ref. No.	Part No.	Description	No. Used
1	54-2390	Pulley - Output	1	23	92-6273	Bracket - Spring	1
2	3241-1	Screw - Set	4	24	251-288	Bearing w/Collar	2
3	60-9130	Bracket - Jackshaft	1	25	302-49	Fitting - Grease	1
4	3296-29	Nut - Lock	A/R	26	3257-5	Key - Woodruff	3
5	322-4	Screw - Hex. Hd.	6	28	54-2380	Pulley - Input	1
6	3296-44	Nut - Lock	4	29	54-1600	Jackshaft	1
7	3256-3	Washer - Flat	6	30	3230-1	Bolt - Carriage	6
8	3245-35	Screw - Set	4	31	251-341	Flange - Bearing	4
9	72-4060	Bearing Assembly	2	32	32149-1	Nut - Lock	6
10	323-8	Screw - Hex. Hd.	4	35	251-304	Rod End	1
11	322-10	Screw - Hex. Hd.	4	36	324-7	Screw - Hex. Hd.	2
12	80-3750	Spacer	2	37	251-305	Rod End	1
14	3234-1	Screw - Hex. Flange Hd.	5	38	3220-4	Nut - Hex. Jam	2
15	59-1620	Bracket - Transaxle	1	39	3296-48	Nut - Lock	2
17	60-8990	Plate - Transaxle	1	40	54-1490	Rod - Steering	1
18	322-4	Screw - Hex. Hd.	6	41	54-2060	Bellcrank Assembly (Incl. Ref. #25 & 42)	1
19	76-9430	Spring - Extension	1	42	46-6680	Bushing - Flanged	2
20	302-2	Fitting - Grease	2	43	59-1470	Shaft - Bellcrank	1
21	13-5969	Differential Assembly	1	44	46-8560	Screw - Thread Forming	2
22	54-8970	"U" Bolt	1				

*Not Illustrated



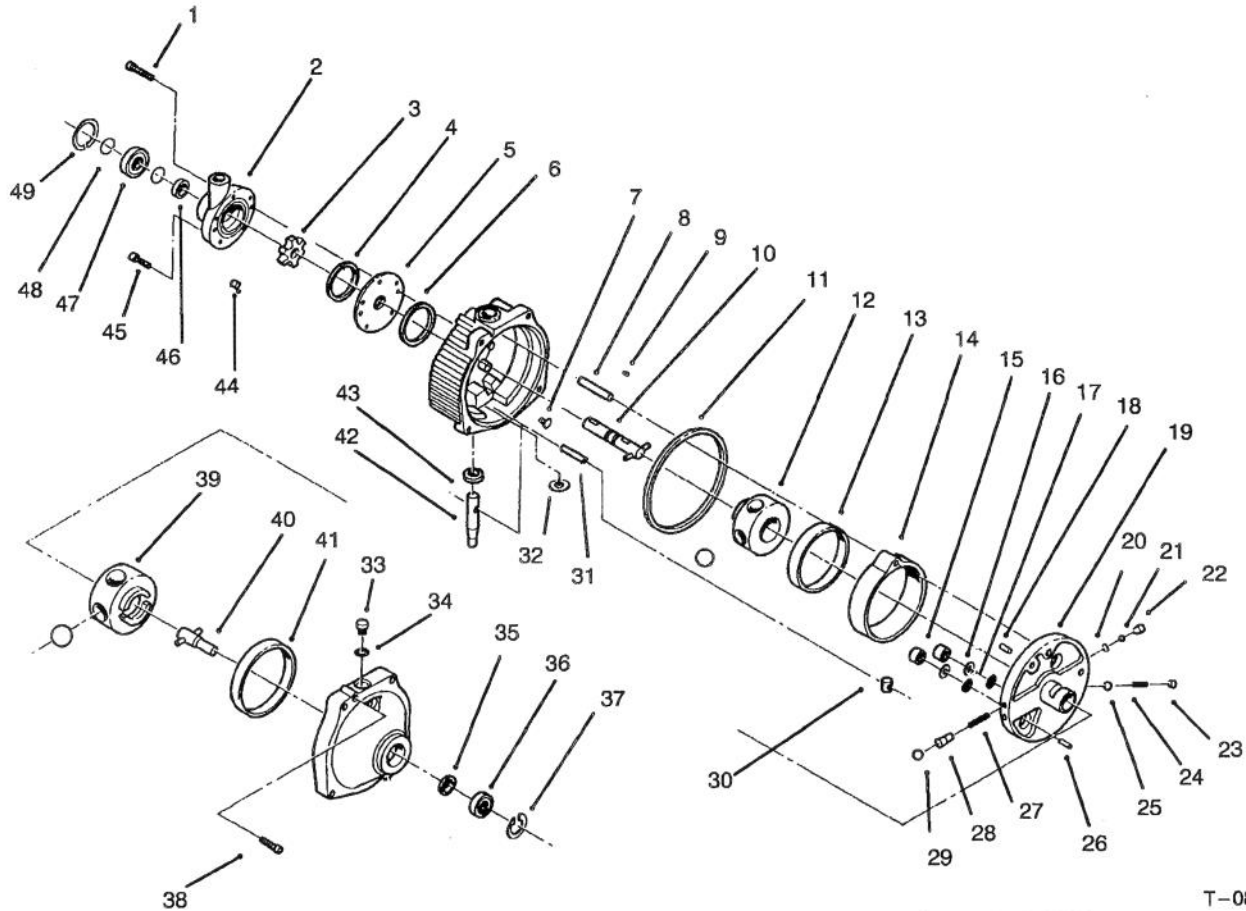
C-2124

TRANSMISSION ASSEMBLY

Ref. No.	Part No.	Description	No. Used
1	32120-64	Ring - Snap	1
2	55-4320	Gasket	
3	54-0320	Gear	1
4	54-0080	Transmission - Hydrostatic	1
5	3257-24	Key - Woodruff	1
6	353-370	Fitting - Hydraulic 90° (Incl. Ref. #49)	2
7	237-79	"O"Ring	2
8	3256-68	Washer	2
9	76-9430	Spring - Extension (Ref.)	
10	302-60	Fitting - Grease 90°	
11	92-6289	Swing Arm Assembly * (Incl. 256-113 Bushings (2))	1
12	3-6498	Washer	1
13	76-8640	Stud - Traction	1
14	3296-29	Nut - Lock	A/R
15	322-6	Screw - Hex. Hd.	2
16	3217-6	Nut	4
17	322-7	Screw - Hex. Hd.	1
19	251-307	Bearing	2
20	92-6290	Spacer	1
22	75-5470	Spacer Bearing	1
25	3296-9	Nut	2
26	29-6163	Switch	1

Ref. No.	Part No.	Description	No. Used
27	75-4130	Spacer	2
28	92-6269	Lever - Traction	2
29	3296-25	Nut	1
30	2411-34	Joint - Ball	1
31	3220-1	Nut - Hex. Jam	1
32	3296-3	Nut - Lock	1
33	3250-46	Screw	2
34	323-14	Screw - Hex. Hd.	1
35	353-511	Fitting - Hydraulic 90° (Incl. Ref. #7)	2
36	3257-5	Key - Woodruff	3
37	3241-2	Screw - Set	2
38	54-0930	Pulley - Transmission	1
39	3253-5	Washer - Lock	4
40	54-0240	Fan	1
41	3256-55	Washer	1
42	3253-3	Washer - Lock	1
43	321-2	Screw - Hex. Hd.	1
44	32144-19	Screw - Round Hd.	3
45	3255-5	Washer - Lock	3
46	323-13	Screw - Hex. Hd.	1
47	323-16	Screw - Hex. Hd.	1
48	3253-5	Washer - Lock	4
49	237-80	"O"Ring	2

*Not Illustrated

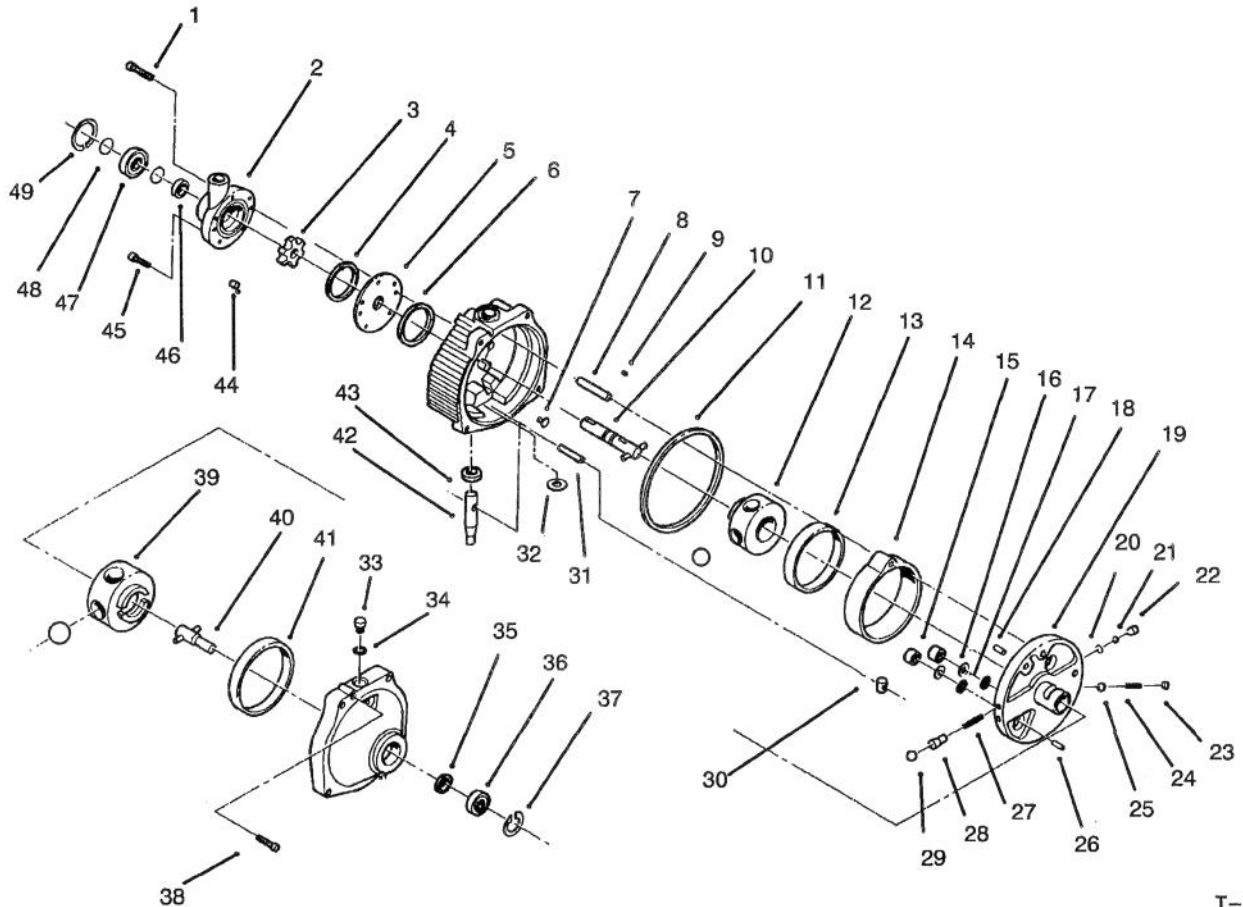


T-0883

HYDROSTATIC TRANSMISSION ASSEMBLY

Ref. No.	Part No.	Description	No. Used
1	56-2800	Screw - Hex. Socket Hd.	1
2	56-2830	Charge Pump Assembly (Incl. Ref. #1)	1
3	56-3120	Carrier	1
4	56-2850	Ring - Seal	1
5	56-2860	Plate - Pump	1
6	56-2870	Ring - Seal	1
7	56-2880	Button	2
8	56-2890	Pin - Dowel	1
9	56-2900	Pin - Drive	1
10	56-2910	Input Shaft Assembly	1
11	56-2920	Ring - Seal	1
12	56-2930	Pump Rotor & Ball Assembly	1
13		Race - Pump	1
14	56-2940	Cam Ring Assembly (Incl. Ref. #13)	1
15	56-2950	Piston	2
16	56-2960	Ring - Backup	2

Ref. No.	Part No.	Description	No. Used
17	56-2970	"O" Ring	2
18	56-2980	Pin - Coil	1
19	56-2990	Pintle Assembly (Incl. Ref. #15-18, 20, 22-26 & 27-29)	1
20	56-3000	Ring - Retaining	2
21	56-3010	Ball	2
22	56-3020	Body - Check Valve	2
23	56-3050	Plug - Relief Valve	1
24	56-3040	Spring - Relief Valve	1
25	56-3030	Ball	1
26	56-3060	Pin - Dowel	1
27	56-3180	Spring - Valve	2
28	56-3200	Body - Valve	2
29	56-3210	Ball	2
30	56-3170	Insert - Cam Ring	1
31		Dowel	1
32		Washer - Control Shaft	1

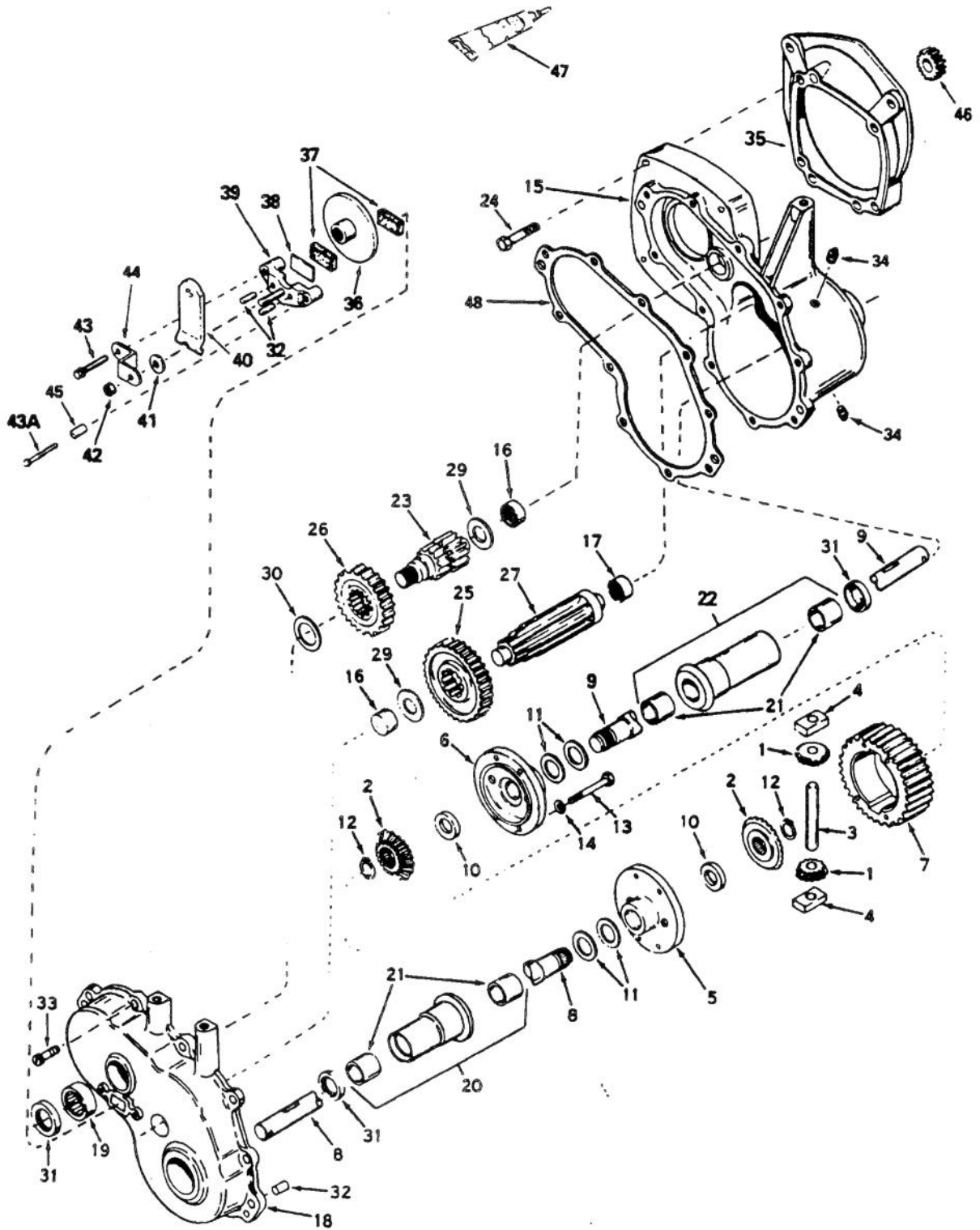


T-0083

HYDROSTATIC TRANSMISSION ASSEMBLY (Continued)

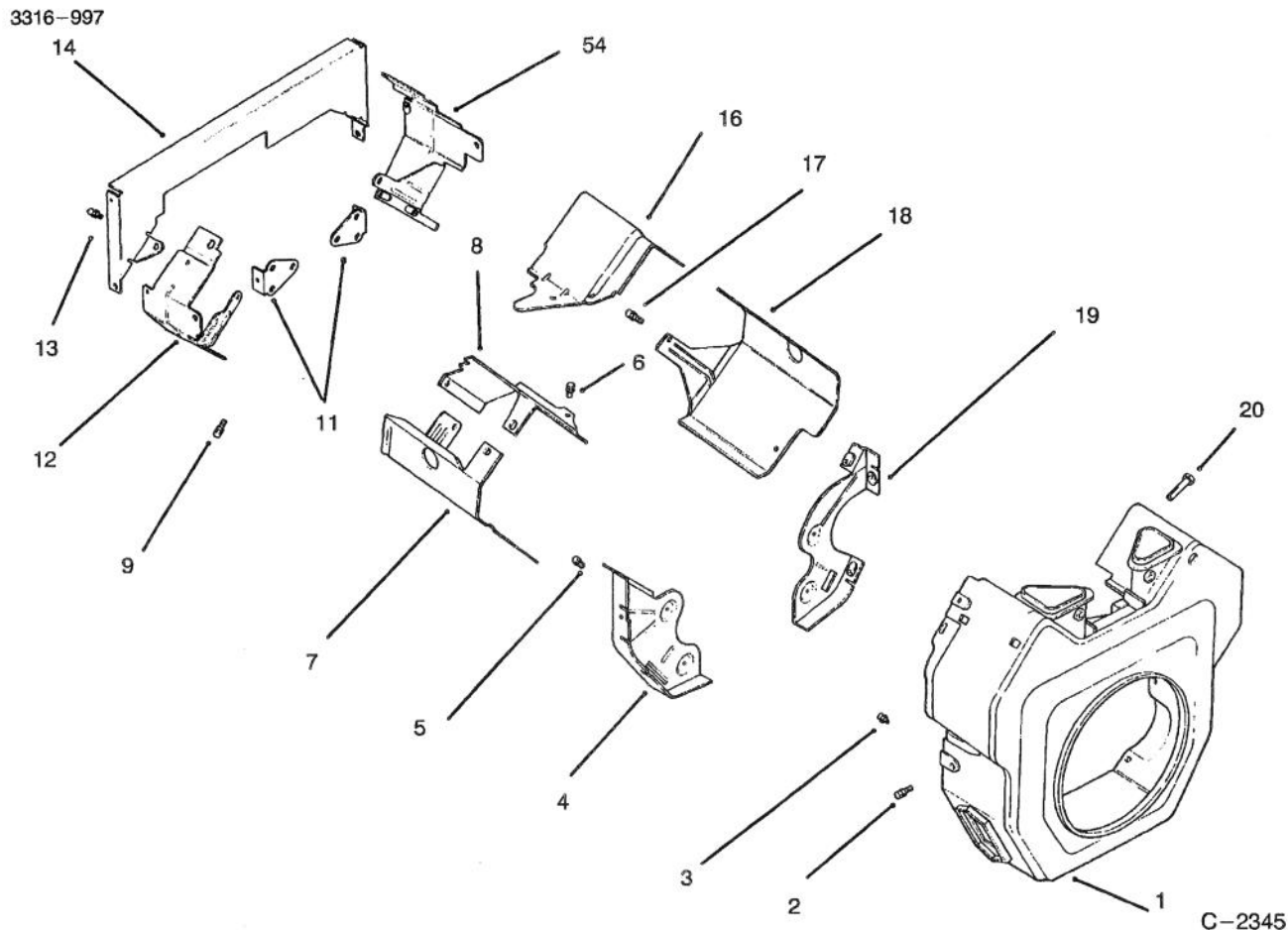
Ref. No.	Part No.	Description	No. Used	Ref. No.	Part No.	Description	No. Used
33	56-3250	Plug Assembly (Incl. Ref. #34)	1			(Incl. Ref. #31 & 32)	1
34	56-3260	"O"Ring	1	43	56-3130	Seal - Oil	1
35	56-3270	Seal - Oil	1	44	56-3110	Pin - Roll	6
36	56-3280	Bearing - Output	1	45	56-3100	Screw - Hex. Socket Hd.	4
37	56-3290	Ring - Retaining	1	46	56-2820	Seal - Oil	1
38	56-3300	Screw - Hex. Socket Hd.	2	47	56-2810	Bearing - Input	1
39	56-3220	Motor Rotor & Ball Assembly	1	48	56-3090	Ring - Retaining	2
40	56-3230	Output Shaft Assembly	1	49	56-3080	Ring - Retaining	1
41	56-3240	Race - Motor	1	*	56-3310	Kit - Overhaul Seal (Incl. Ref. #4, 6, 11, 16, 17, 34, 35, 43 & 46)	1
42	56-3140	Control Shaft Kit					

DIFFERENTIAL ASSEMBLY NO. 1310-001A



DIFFERENTIAL ASSEMBLY NO. 1310-001A

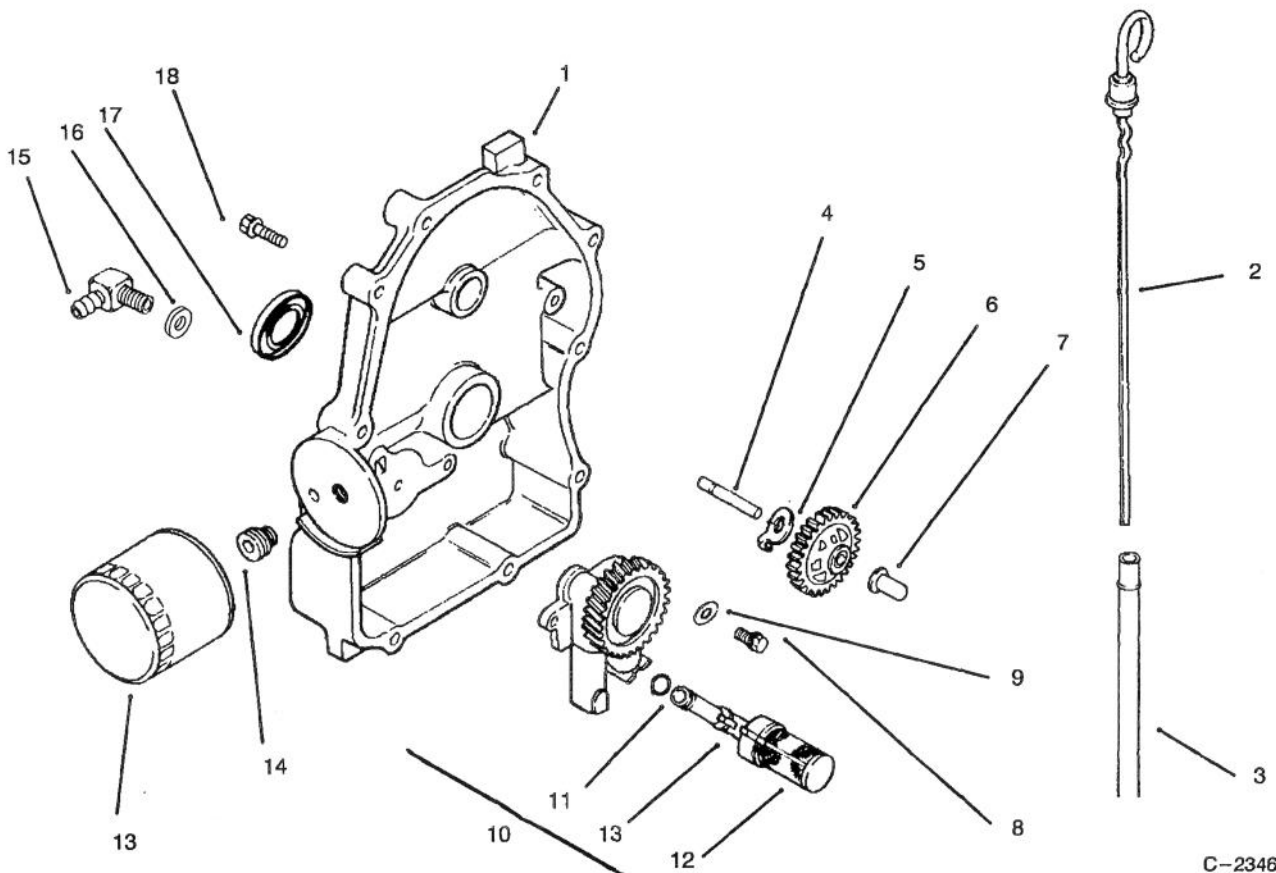
Ref. No.	Part No.	Description	No. Used	Ref. No.	Part No.	Description	No. Used
1	778197	Pinion - Bevel	1	23	776245	Shaft - Brake	1
2	778198	Gear - Bevel	1	24	79-2120	Screw - Hex. Hd.	1
3	786019	Pin - Drive	1	25	778036	Gear - Output	1
4	786027	Block - Drive	1	26	778037	Gear - Idler	1
5	774028A	Carrier - Differential	1	27	776244	Shaft - Output	1
6	774029A	Carrier - Differential	1	29	780001	Washer	1
7	778033A	Gear - Ring	1	30	780090	Washer	1
8	774607	Axle - 16-5/8"	1	31	788008	Seal - Oil	1
9	774608	Axle - 21-57/64"	1	32	786026	Pin - Dowel	1
10	780107	Washer	1	33	792046	Screw - Thread Forming	1
11	780042	Washer - Thrust	1	34	792010	Plug - Pipe	1
12	792018	Ring - Snap	1	35	786112	Plate - Adapter	1
13	792020	Screw - Hex. Hd.	1	36	790027	Disc - Brake	1
14	792006	Washer - Lock	1	37	790006	Pad - Brake	1
15	770080	Case Assembly (Incl. Ref. #16 & 17)	1	38	790007	Plate - Brake Pad	1
16	780013	Bearing - Needle	1	39	790025	Holder - Brake Pad	1
17	780088	Bearing - Needle	1	40	790010	Lever - Brake	1
18	772085	Cover Assembly (Incl. Ref. #16 & 19)	1	41	792076	Washer - Flat	1
19	780089	Bearing 0 Needle	1	42	792075	Nut - Lock	1
20	782041A	Housing Assembly - 6-5/8" (Incl. Ref. #21)	1	43	792073	Screw - Thread Forming	1
21	780054	Bushing	1	43A	792085	Screw - Thread Forming	1
22	782042A	Housing Assembly - 8-5/8" (Incl. Ref. #21)	1	44	786086	Bracket	1
				45	786066	Spacer	1
				46	778194	Gear - Spur 22T	1
				47	510334	Gasket Eliminator	1
				48	788044	Gasket	1



BAFFLES & SHROUD

Ref. No.	Part No.	Description	No. Used
1	24 027 21	Housing – Blower	1
2	SM-0545016	Screw	5
3	M-0551016	Screw	1
4	24 146 02	Plate – Backing #2 side	1
5	M-0645016	Screw	4
6	M-0645016	Screw	2
7	24 063 20	Baffle – Cylinder Barrel # 2 side	1
8	24 063 17	Baffle – Valley #2 side	1
9	M-0545010	Screw	2
*10	24 755 14	Kit – "Q"Duct (Incl. Ref. # 11-15)	1
11	24 126 04	Bracket – Support	2

Ref. No.	Part No.	Description	No. Used
12	24 063 12	Baffle, – Ducted Air # 1 side	1
13	M-0639010	Screw	8
14	24 146 04	Plat – Ducted Air Backing	1
15	24 063 13	Baffle – Ducted air # 1 side	1
16	24 063 24	Baffle, Valley 1 side	1
17	SM-0545016	Screw	2
18	24 063 08	Baffle – Cylinder Barrel # 1 side	1
19	24 146 08	Plate – Backing #1 side	1
20	M-0545020	Screw	2



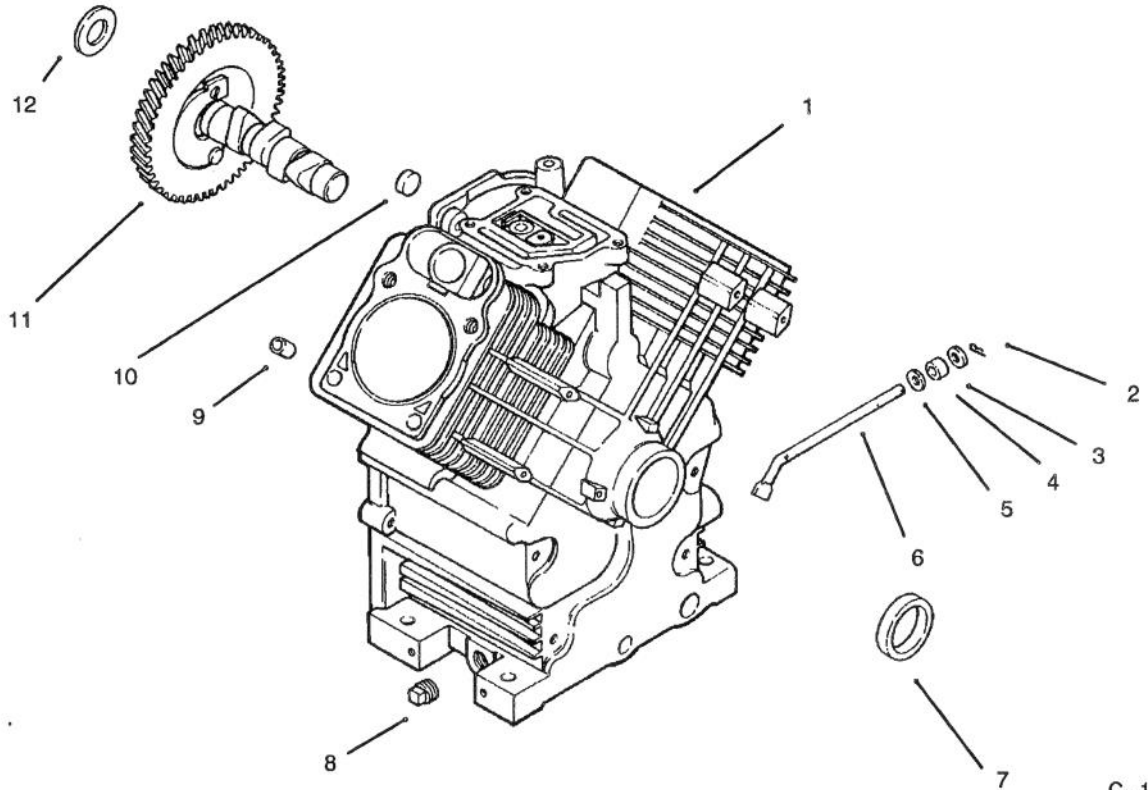
C-2346

OIL PAN/LUBRICATION

Ref. No.	Part No.	Description	No. Used
1	24 009 83	Plate - Closure (Incl. Ref. # 2-7, 10-12, 16 & 17)	1
2	24 038 01	Dipstick	1
3	24 123 04	Tube - Dipstick	1
4	12 144 02	Shaft - Governor Gear	1
5	52 448 02	Tab - Locking	1
6	24 043 12	Kit - Governor Gear Assembly (Incl. Ref. # 7)	1
7	12 380 01	Pin - Governor Regulating	1
8	M-0645025	Screw	2
9	M-0631005	Washer - Flat	2

Ref. No.	Part No.	Description	No. Used
10	24 393 03	Oil Pump Assembly (Incl. Ref. # 11-12)	1
11	24 153 01	"O"Ring	1
12	24 381 01	Pick-up, Oil	1
13	12 050 01	Filter - Oil	1
14	24 136 01	Adapter - Oil Filter	1
15	25 155 02	Connector, 90° Hose	1
16	24 153 08	"O"Ring	1
17	52 032 08	Seal - Oil (PTO End)	1
18	24 086 16	Screw	10

*Not Illustrated



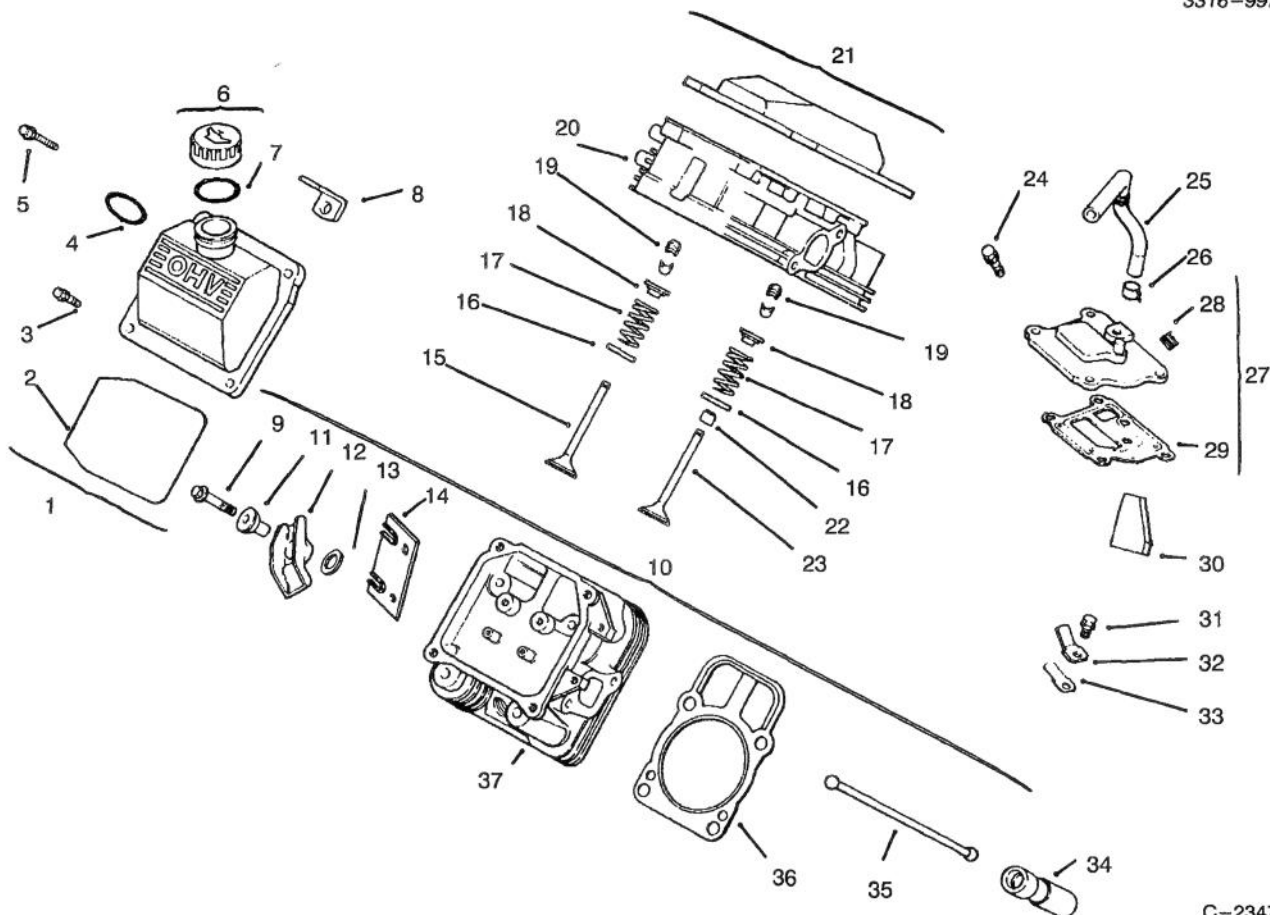
C-1611

CRANKCASE

Ref. No.	Part No.	Description	No. Used
1		Cylinder block (Use Miniblock 24 782 01)	1
2	12 380 04	Pin - Hitch	1
3	X-25-102	Washer - Plain	1
4	12 032 01	Seal - Governor Cross Shaft	1
5	X-25-63	Washer	1
6	24 144 01	Shaft - Governor Cross	1
7	24 032 01	Seal - Oil	1
8	X-75-10	Plug, Sq. Hd.	2
9	12 380 03	Pin - Dowel	6
10	52 139 09	Plug - Cup	1

Ref. No.	Part No.	Description	No. Used
11	24 012 05	Camshaft	1
12	12 422 09	Shim - Camshaft, Green	A/R
*	12 422 13	Shim - Camshaft, Black	A/R
*	12 422 07	Shim - Camshaft, White	A/R
*	12 422 08	Shim - Camshaft, Blue	A/R
*	12 422 10	Shim - Camshaft, Yellow	A/R
*	12 422 11	Shim - Camshaft, Red	A/R
*	12 422 12	Shim - Camshaft, Gray	A/R
*	24 782 01	Short Block	1
*	24 755 03	Set - Gasket	1

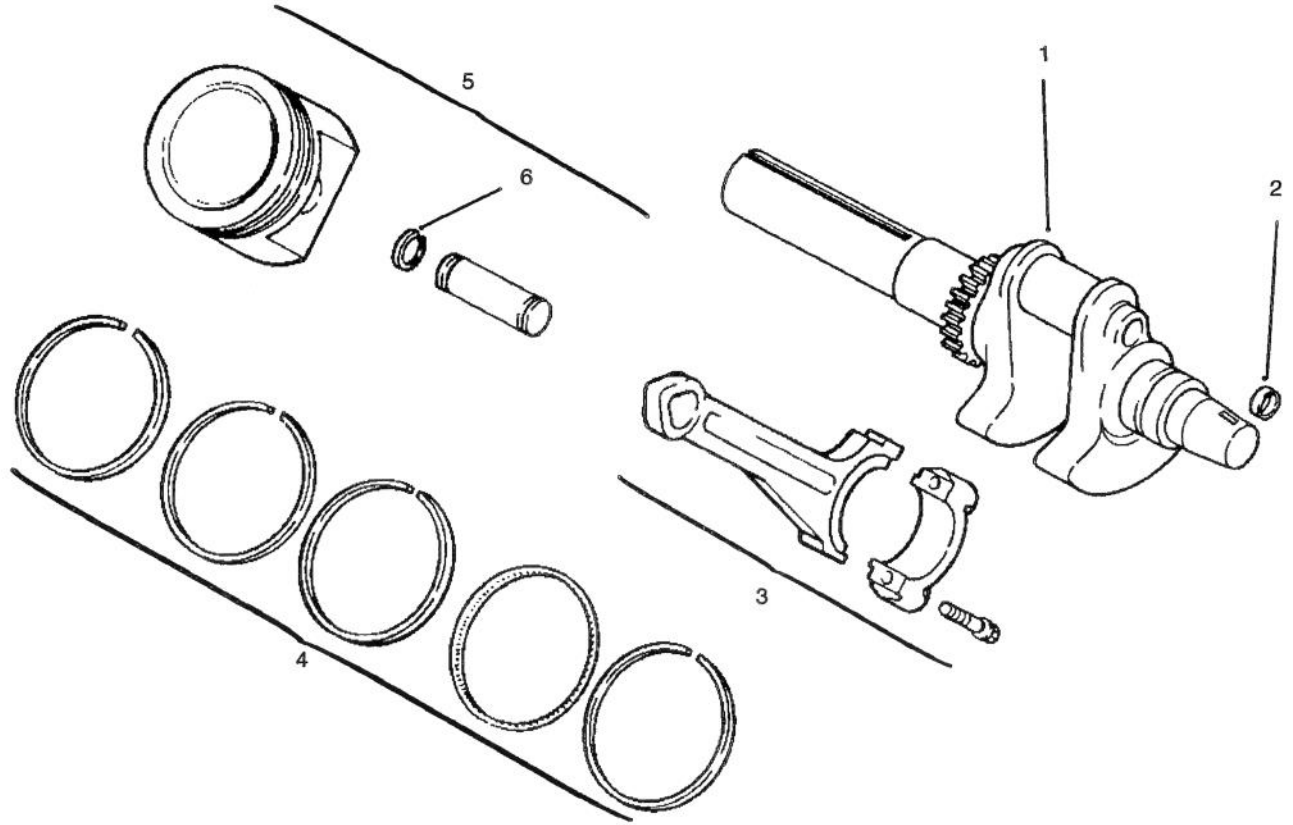
*Not Illustrated



C-2347

CYLINDER HEAD, VALVE & BREATHER

Ref. No.	Part No.	Description	No. Used	Ref. No.	Part No.	Description	No. Used
1	24 755 75	Kit - Valve Cover (Incl. Ref. #2-4)	1	20	24 318 09	Head Assembly (# 1 Cylinder)	1
2	24 153 12	"O"Ring	1	21	24 755 74	Kit - Valve Cover (Incl. Ref. # 2 & 3)	1
3	24 086 32	Screw - Shoulder	4	22	24 032 05	Seal - Valve Stem	2
4	24 153 09	"O"Ring	1	23	24 017 01	Valve - Intake (Std.)	2
5	12 086 16	Screw	8	*	24 017 02	Valve - Intake (.25)	2
6	25 755 13	Kit - Oil Fill Cap (Incl. Ref. #7)	1	24	M-0645020	Screw	4
7	12 153 03	"O"Ring	1	25	24 326 06	Hose - Breather	1
8	24 445 01	Strap - Lifting	1	26	X-426-9	Clamp - Breather	1
9	M-0640034	Screw	4	27	24 033 01	Kit - Breather w/Plug (Incl. Ref. # 28 & 29)	1
10	24 755 61	Kit - Valve Train (Incl. Ref. # 11-14 & 35)	1	28	X-75-23	Plug	1
11	24 194 02	Pivot - Rocker Arm	4	29	24 041 23	Gasket - Breather	1
12	24 186 03	Arm - Rocker	4	30	24 050 01	Filter - Breather	1
13	M-0631005	Washer - Plain	4	31	M-0545010	Screw	1
14	24 146 09	Plate - Guide	2	32	12 018 01	Retainer - Reed	1
15	24 016 01	Valve - Exhaust (Std.)	2	33	24 402 03	Reed	1
*	24 016 02	Valve - Exhaust (.25)	2	34	12 351 01	Lifter - Valve	4
16	235011	Retainer - Spring	4	35	24 411 04	Rod - Push	4
17	24 089 02	Spring - Valve	4	36	24 041 08	Gasket - Cylinder Head	2
18	12 173 01	Cap - Valve Spring	4	37	24 318 10	Head - Assembly (# 2 Cylinder)	2
19	12 755 03	Kit - Retainer	4				



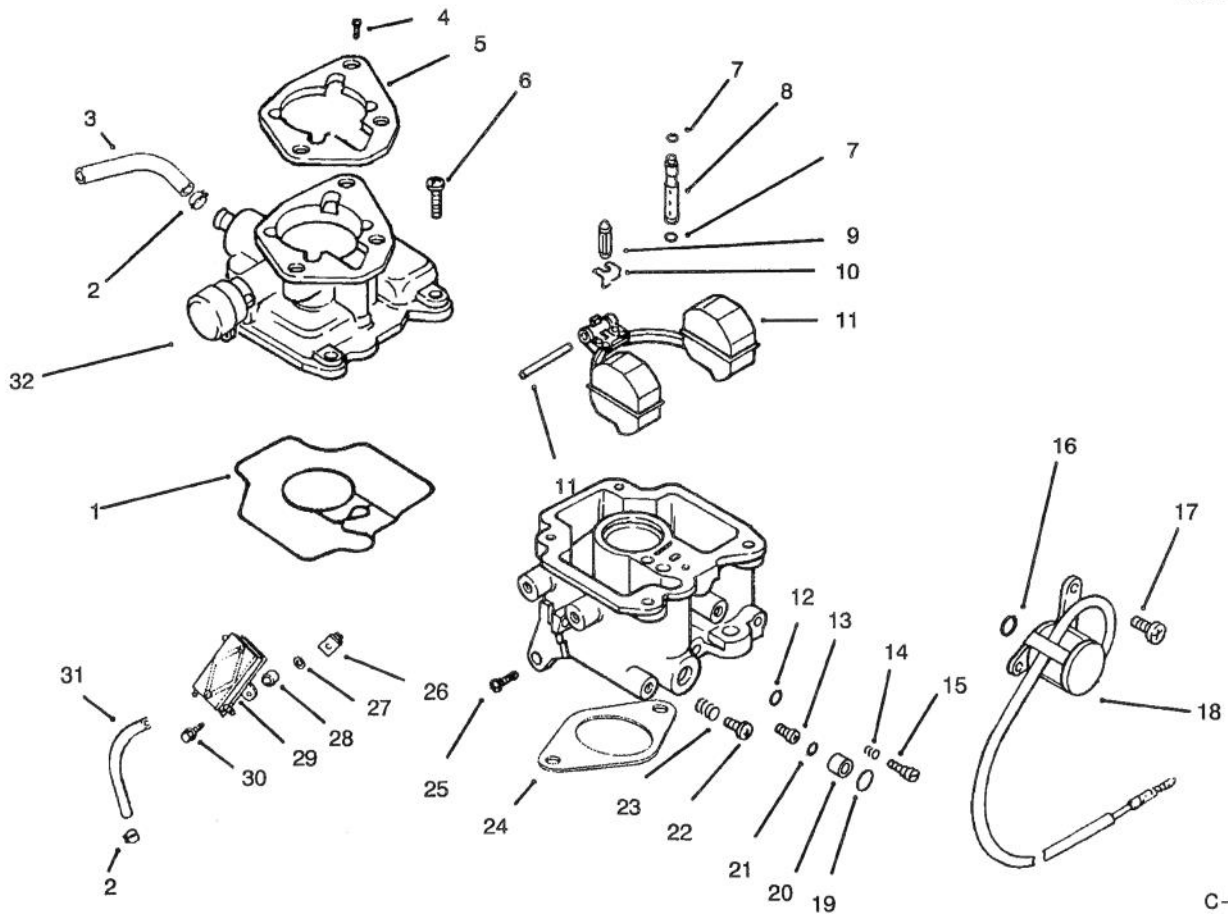
C-1613

CRANKSHAFT, PISTON AND RINGS

Ref. No.	Part No.	Description	No. Used
1	24 014 32	Crankshaft	1
2	12 139 01	Plug, cup	1
3	24 067 05	Connecting Rod (Std.)	2
*	24 067 06	Connecting Rod (.25)	2
4	24 108 01	Ring Set (Std.)	1
*	24 108 02	Ring Set (.25)	1

Ref. No.	Part No.	Description	No. Used
*	24 108 03	Ring Set (.50)	1
5	24 874 01	Piston w/Ring Set (Std.) (Incl. Ref. # 4-6)	2
*	24 874 02	Piston w/Ring Set (.25)	2
*	24 874 03	Piston w/Ring Set (.50)	2
6	24 018 01	Retainer - Piston Pin	4

*Not Illustrated



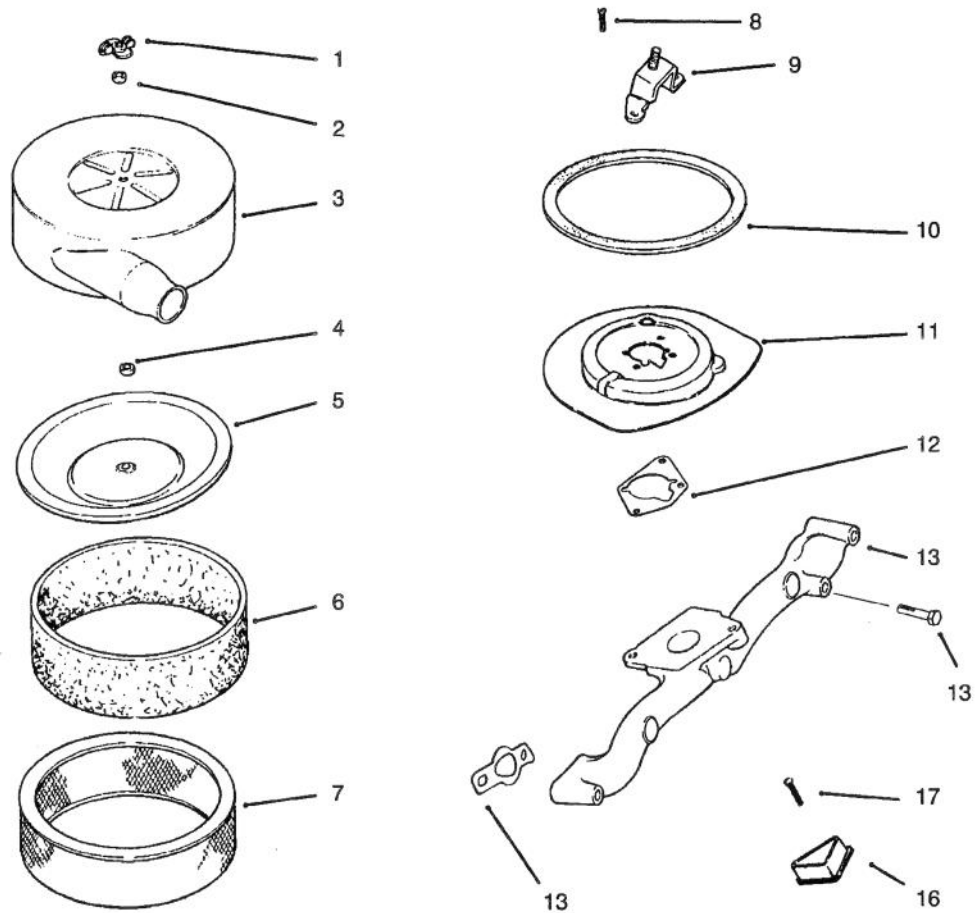
C-2348

CARBURETOR AND FUEL PUMP

Ref. No.	Part No.	Description	No. Used
1	24 041 09	Gasket - Carburetor Body	1
*	24 853 02	Kit - Carburetor w/Gasket (Incl. Ref. #1-15, 19-23 & 29)	1
2	X-426-9	Clamp - Hose	4
3	25 353 10	Line - Fuel 9"	1
4	M-0651030	Screw	2
5	24 041 06	Gasket - Air Cleaner	1
6	24 086 09	Screw	4
7	24 153 02	"O"Ring	2
8	24 337 01	Jet - Slow	1
9	24 462 01	Valve - Inlet Needle	1
10	24 154 01	Clip - Inlet Needle Valve	1
11	24 757 02	Kit - Float Repair	1
12	24 153 03	"O"Ring	1
13	24 337 02	Jet - Main	1
14	24 089 11	Spring - Idle Adjust	1
15	24 368 01	Needle - Idle Adjust	1
16	24 153 04	"O"Ring	1
17	24 086 07	Screw	2
18	24 435 01	Solenoid	1
19	24 153 05	"O"Ring	1
20	24 521 01	Seat - Solenoid	1

Ref. No.	Part No.	Description	No. Used
21	24 153 06	"O"Ring	1
22	24 086 10	Screw - Idle Speed Adjust	1
23	24 089 10	Spring - Idle Speed Adjust	1
24	24 041 17	Gasket - Carburetor	1
25	24 086 05	Screw - Throttle Stop	1
26	24 100 01	Nut	2
27	X-25-52	Washer	2
28	52 112 13	Spacer	2
29	24 393 04	Pump - Fuel, Pulse	1
30	24 086 31	Screw	2
31	24 353 02	Line - Fuel 15-1/2"	1
32	24 757 07	Kit - Choke Repair (Incl. Ref. # 33)	1
*33	24 173 02	Cap - Choke Lever	1
*		Carburetor Assembly (Incl. Ref. # 1-25 & 32)	1
*	24 041 17	Gasket - Carburetor	1
*	24 757 03	Kit - Carburetor Repair	1
*	24 757 01	Kit - Solenoid Assembly	1
*	24 755 01	Kit - High Altitude (1500 meters)	1
*	24 755 02	Kit - High Altitude (3000 meters)	1

*Not Illustrated



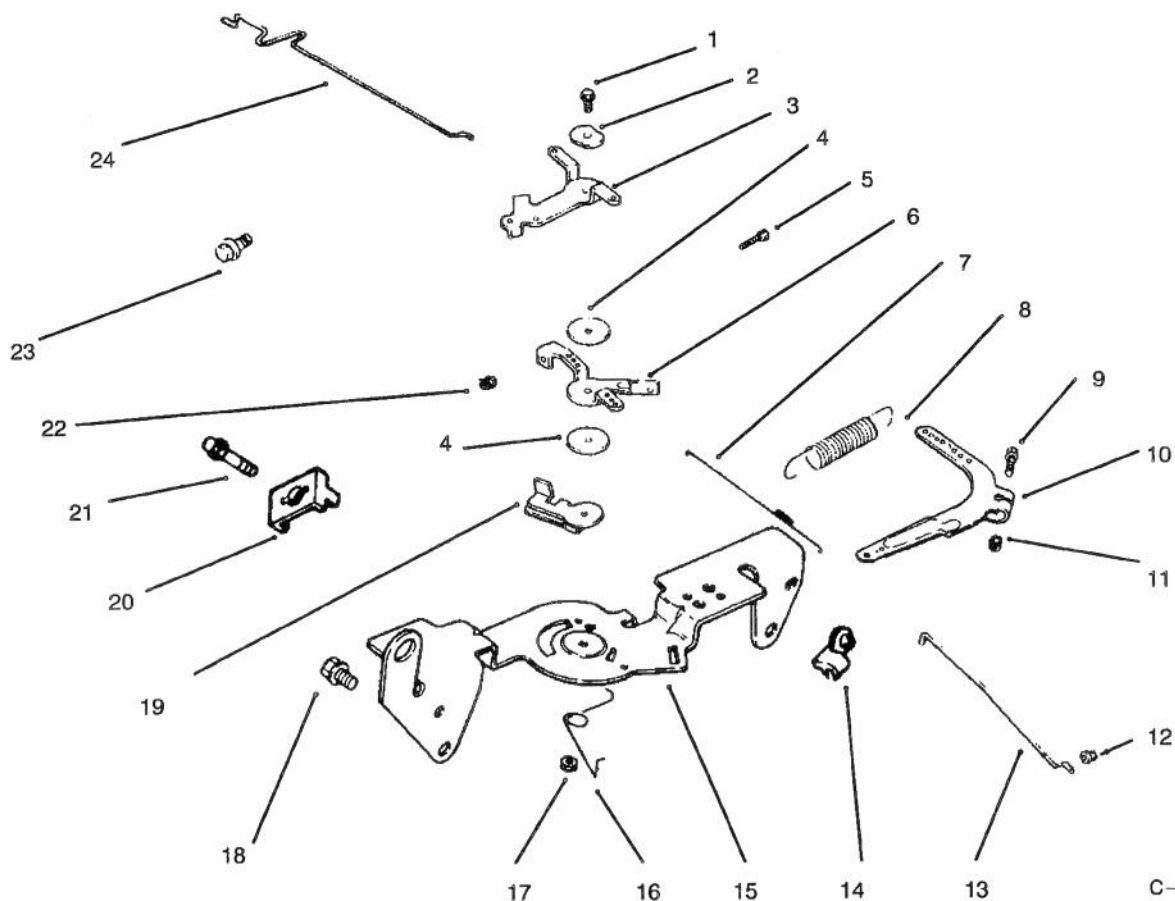
C-2349

AIR INTAKE/FILTRATION

Ref. No.	Part No.	Description	No. Used
1	12 100 01	Nut - Wing	2
2	230046	Seal - Air Filter	1
3	24 096 34	Cover - Air Cleaner	1
4	231032	Seal - Breather	1
5	24 096 01	Cover - Inner Air Cleaner	1
6	24 083 02	Element - Precleaner	1
7	47 083 03	Element - Air Cleaner	1
8	M-0639016	Screw	3
9	24 126 22	Bracket - Air Cleaner	1

Ref. No.	Part No.	Description	No. Used
10	24 032 07	Seal - Air Cleaner	1
11	24 094 05	Base - Air Cleaner	1
12	24 041 06	Gasket - Air Cleaner	1
13	24 041 01	Gasket - Intake Manifold	2
14	M-0639055	Screw	4
15	24 164 14	Manifold	1
16	24 096 17	Cover - Blower Housing	2
17	15 086 09	Screw	2
*	24 113 17	Decal - Maintenance	1

*Not Illustrated

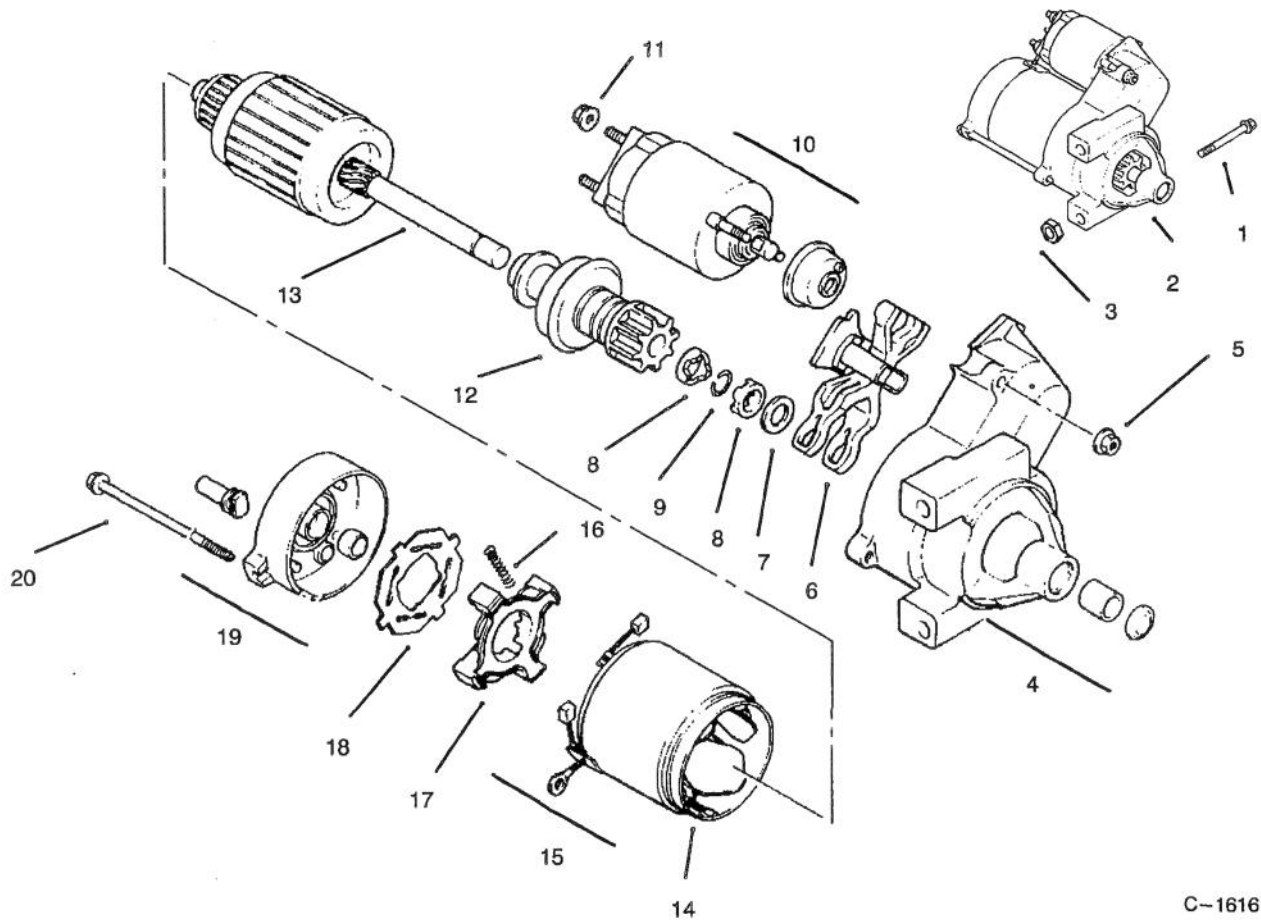


C-1615

THROTTLE LINKAGE AND GOVERNOR CONTROLS

Ref. No.	Part No.	Description	No. Used	Ref. No.	Part No.	Description	No. Used
1	SM-0545020	Screw	1	13	24 079 01	Linkage - Throttle	1
2	41 468 03	Washer - Wave	1	14	25 158 11	Bushing - Linkage	1
3	24 090 05	Lever - Choke	1	15	24 126 13	Bracket - Control	1
4	24 468 01	Washer	3	17	M-0547050	Nut	1
5	M-0401025	Screw	1	16	24 089 03	Spring - Choke Return	1
7	24 089 01	Spring - Linkage	1	18	SM-0645016	Screw	4
6	24 090 03	Lever - Throttle Control	1	19	24 090 07	Lever - Throttle Actuator	1
8	24 089 18	Spring - Governor	1	20	12 237 01	Clamp - Cable	2
9	SM-0642025	Screw	1	21	SM-0545016	Screw	2
10	24 090 14	Lever - Governor	1	22	M-0446030	Nut	1
11	SM-0641060	Nut	1	23	SM-0545016	Screw	1
12	25 158 08	Bushing - Linkage	1	24	24 079 02	Linkage - Choke	1

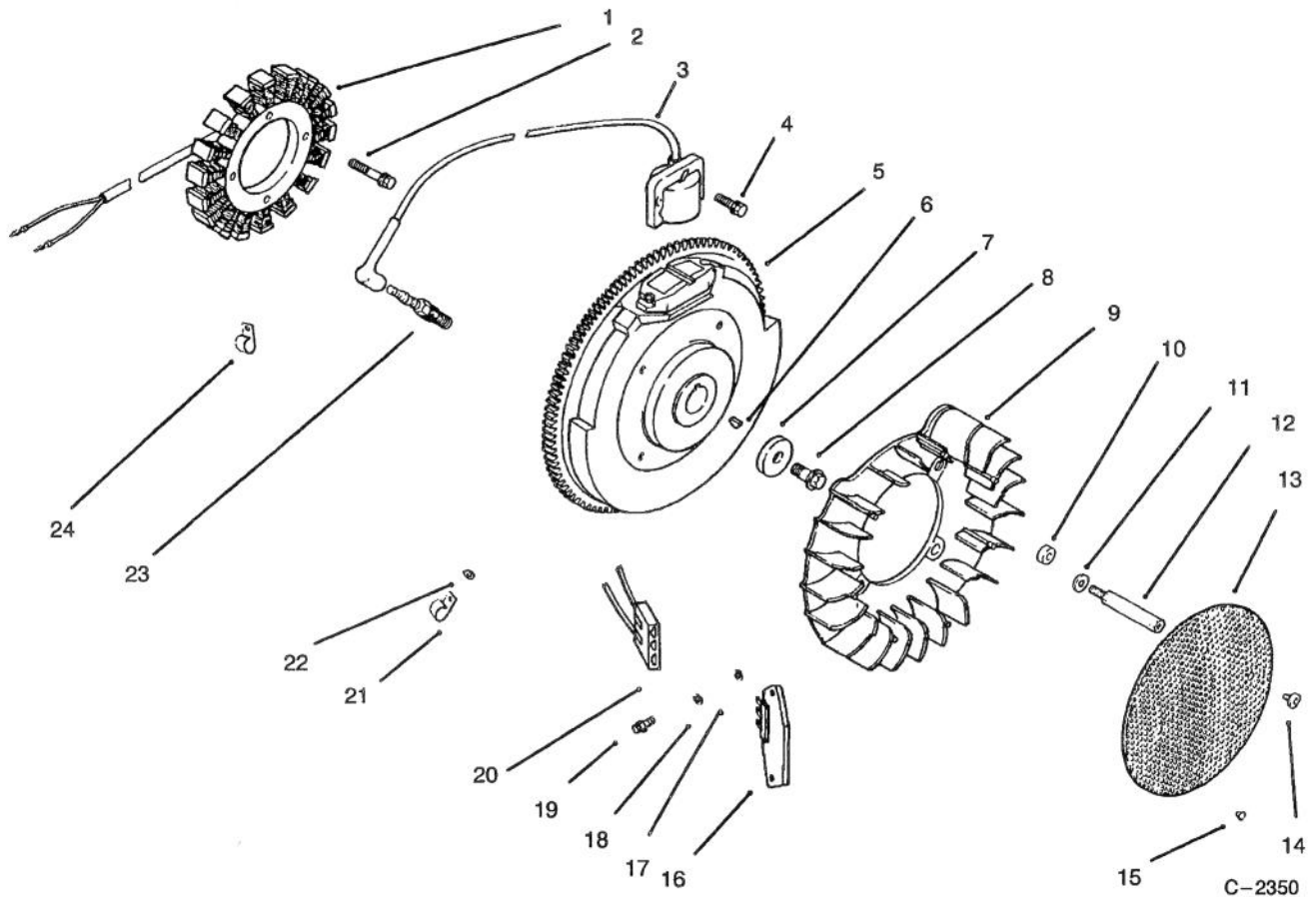
*Not Illustrated



C-1616

STARTER

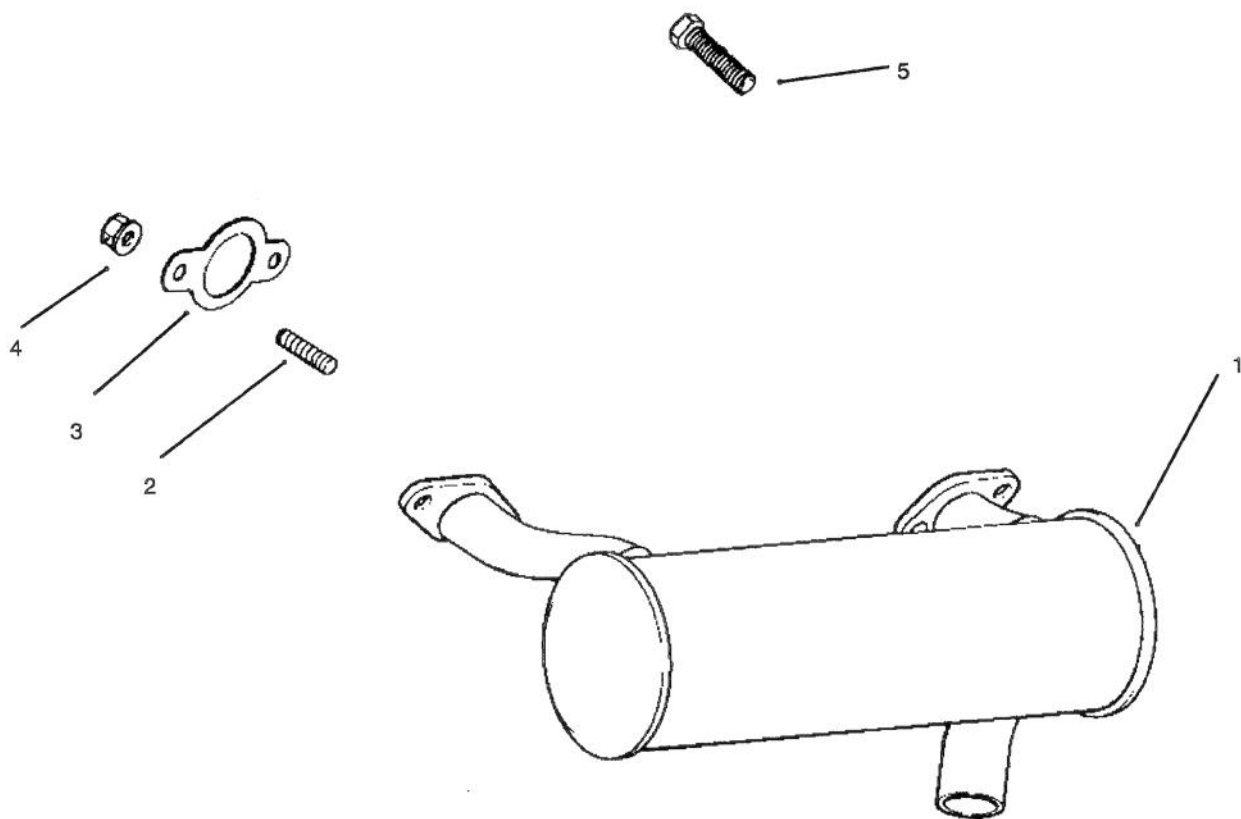
Ref. No.	Part No.	Description	No. Used	Ref. No.	Part No.	Description	No. Used
1	SM-0839080	Screw	2	11	52 100 09	Nut	1
2	24 098 01	Starter - Solenoid Shift (Incl. Ref. # 4-20)	1	12	12 239 01	Drive - Pinion	1
3	M-0841080	Nut	1	13	12 170 03	Armature - Starter	1
4	24 081 04	Cap - Drive End	1	14	12 471 01	Frame	1
5	52 100 10	Nut - Starter	2	15	52 221 01	Kit - Brush (Incl. Ref. # 16)	1
6	12 090 10	Lever - Starter Drive	1	16	52 089 09	Spring - Brush	4
7	52 468 14	Washer - Thrust	1	17	52 323 03	Holder - Brush	1
8	52 100 08	Nut - Stop Collar	2	18	52 168 01	Insulator	1
9	52 141 03	Ring - Retainer	1	19	12 301 01	Cap - Commutator End	1
10	52 435 02	Solenoid	1	20	52 211 05	Bolt	2



IGNITION AND CHARGING SYSTEM

Ref. No.	Part No.	Description	No. Used	Ref. No.	Part No.	Description	No. Used
1	24 085 01	Stator - 15 amp	1	14	M-0657010	Screw	4
2	M-0548025	Screw	2	15	25 086 43	Screw - Set	1
3	24 584 01	Module - Ignition	2	16	25 403 03	Regulator - Rectifier	1
4	SM-0545020	Screw	4	17	X-25-63	Washer	1
5	24 025 01	Flywheel Assembly	1	18	X-25-92	Washer	2
6	X-42-15	Key	1	19	24 086 18	Screw	2
7	12 468 03	Washer	1	20	236602	Connector	1
8	12 086 14	Screw	1	21	235173	Clip - Cable	1
9	24 157 01	Fan	1	22	X-25-63	Washer	1
10	12 112 01	Spacer - Fan	4	23	12 132 02	Spark Plug	2
11	X-25-53	Washer	4	24	48 154 02	Clip - Cable	1
12	24 072 01	Stud - Grass Screen	4	*	24 176 40	Harness - Wiring	1
13	24 162 13	Screen - Grass	1	*	24 518 04	Lead - Green, 18 Gauge	1

*Not Illustrated



C-1618

EXHAUST

Ref. No.	Part No.	Description	No. Used
1	24 068 11	Muffler	1
2	M-0829033	Stud - Muffler	4
3	24 041 02	Gasket - Exhaust	2

Ref. No.	Part No.	Description	No. Used
4	M-0841080	Nut	4
5	M-0839020	Screw	1

TORO PART NUMBER INDEX

Part No.	Description	Pg. No.	Ref. No.	Qty.	Part No.	Description	Pg. No.	Ref. No.	Qty.
102950	Washer	2	72	1	46-8091	Screw	13	42	2
105805	Nut	2	73	1	46-8560	Screw	5	35	7
109989	Spacer	9	3	4	46-8560	Screw - Hex. Hd.	1	5	25
113050	Cover - P.T.O. Switch	2	39	1	46-8560	Screw - Thread Forming	18	44	2
113179	Nut	2	38	1	47-1980	Cover Steering Shaft	2	31	1
114263	Spring - Seat	9	9	2	48-7610	Screw	14	4	5
116716	Switch - Clutch & Brake	2	41	1	49-6430	Pad - Reverse	1	12	1
3-6498	Washer	19	12	1	49-6470	Pad - Accelerator	1	4	1
3-6498	Washer - Thrust	3	8	5	51-0780	Slide Seat Assembly R.H.	9	*	1
3-6498	Washer - Thrust	2	52	2	51-0790	Slide Seat Adjust Assembly	9	2	1
5-0930	Key	14	21	1	53-4430	Decal - Oil	6	51	1
11-4659	Air Cleaner Assembly	8	27	1	54-0080	Transmission - Hydrostatic	19	4	1
12-1109	Lever - Idler	11	27	1	54-0090	Valve Assembly	8	23	1
12-5950	Rod - Battery Support	13	18	1	54-0100	Filter Head Assembly	6	63	1
13-5969	Differential Assembly	18	21	1	54-0110	Filter - Transmission Oil	5	44	1
14-4109	Hood	13	3	1	54-0140	Hub - Wheel	4	2	2
19-1470	Bolt - Shoulder	5	41	2	54-0150	Cylinder - Lift	11	18	1
21-9260	Cover - Dust	1	21	1	54-0220	Assembly - Clutch	14	16	1
22-8330	Plug	10	19	1	54-0230	Field Assembly	15	1	1
22-8340	Spring	10	21	1	54-0240	Fan	19	40	1
22-8350	Ball	10	22	1	54-0260	Spool	10	1	1
22-8360	Pin - Cam	10	24	1	54-0280	Shaft	12	13	1
22-8370	Seat - Check Valve	10	23	1	54-0290	Seal Repair Kit	12	*	1
22-8380	Retainer - Spring	10	3	2	54-0300	Piston	12	3	1
22-8410	Spring	10	4	1	54-0310	Head	12	6	1
22-8480	Ring - Retaining	10	6	1	54-0320	Gear	19	3	1
22-8490	Ring - Retaining	10	7	1	54-0330	Frame - Rear	3	13	1
22-8500	"O" Ring	10	2	2	54-0450	Axle Stand - R.H.	6	60	1
23-1120	Washer - Flat	6	58	2	54-0460	Axle Stand - L.H.	5	39	1
24-5790	Weight - Rear	3	17	1	54-0560	Spindle L. H.	3	22	1
27-0410	Bolt - Shoulder	5	28	2	54-0570	Spindle R.H.	3	7	1
27-5200	Spacer	10	5	1	54-0880	Decal - Tunnel	2	47	1
27-6230	Bolt - Shoulder	11	31	1	54-0900	Decal - Lift Control	8	13	1
27-9080	Bushing	1	1	3	54-0910	Decal - Warning	5	32	1
27-9080	Bushing	11	6	4	54-0920	Decal - Parking Brake	8	1	2
27-9080	Bushing	3	31	2	54-0930	Pulley - Transmission	19	38	1
28-1120	Plug	10	18	1	54-0960	Spring - Parking Brake	11	42	1
28-2480	Washer - Flat	3	2	2	54-1000	Tower - Top	1	24	1
28-3894	Wire - Positive	14	29	1	54-1010	Channel - Front	5	45	1
28-3940	Collar - Steering Shaft	2	45	2	54-1060	Bracket - Idler Mount	6	55	1
29-0590	Screen	13	35	1	54-1120	Bracket - Filter Head	6	64	1
29-6163	Switch	19	26	1	54-1130	Link - Idler Anchor	5	22	2
33-1300	Element Assembly	7	6	1	54-1170	Spring - Extension	11	30	1
33-1310	Baffle	7	5	1	54-1220	Support - Seat R.H.	8	8	1
33-1320	Cup	7	4	1	54-1260	Clamp - Battery	13	9	1
33-1330	Nut Assembly	7	3	1	54-1270	Bracket - Parking Brake	11	8	1
33-1340	Clamp Assembly	7	2	1	54-1340	Link - Steering	2	43	1
33-1350	Band Assembly	7	1	2	54-1380	JackShaft - V-Belt	5	40	1
36-3220	Pulley - Idler	11	26	1	54-1380	V-Belt	14	17	1
36-4950	Cap - Oil	13	36	1	54-1390	V-Belt - Traction	6	59	1
37-7250	Spacer	6	53	2	54-1390	V-Belt	14	18	1
38-8000	Filter - Fuel	13	26	1	54-1410	Spring - Idler	5	21	2
43-5220	Ring - Retaining	12	12	1	54-1440	Bracket - Tunnel	2	50	2
44-8160	Washer - Flat	14	14	1	54-1451	Control - Throttle, Choke	1	25	2
44-8310	Ring - Retaining	15	3	2	54-1470	Footrest - L.H.	2	63	1
44-8320	Spring	15	10	3	54-1490	Rod - Steering	18	40	1
44-8330	Spacer - Bearing	15	6	1	54-1491	Rod - Steering, Rear	3	29	1
44-8340	Collar - Bearing	15	7	1	54-1550	Support - Hood	8	30	1
44-8360	Field Coil, Rotor & Bearing	15	4	1	54-1600	Jackshaft	18	29	1
44-8370	Armature & Pulley Assembly	15	5	1	54-1770	Bracket - Cable Traction	2	64	1
46-6680	Bushing	3	9	6	54-1800	Plate - Engine Front	5	8	2
46-6680	Bushing - Flanged	18	42	2	54-1810	Plate - Engine, Rear	5	11	2
46-7510	Hood - Intake	7	10	1	54-1830	Support - Shield	5	25	1

*Not Illustrated

TORO PART NUMBER INDEX (Cont.)

Part No.	Description	Pg. No.	Ref. No.	Qty.	Part No.	Description	Pg. No.	Ref. No.	Qty.
54-1850	Support - Battery	13	16	1	56-2940	Cam Ring Assembly	20	14	1
54-1860	Stop - Hood Upper	13	6	2	56-2950	Piston	20	15	2
54-1870	Stop - Hood, Lower	5	31	2	56-2960	Ring - Backup	20	16	2
54-1880	Strap - Fuel Tank	13	4	2	56-2970	"O"Ring	20	17	2
54-1890	Foam - Tank	13	20	2	56-2980	Pin - Coil	20	18	1
54-1900	Tower - Front	1	3	1	56-2990	Pintle Assembly	20	19	1
54-1910	Channel - Side R.H.	5	6	1	56-3000	Ring - Retaining	20	20	2
54-1920	Channel - Side L.H.	5	33	1	56-3010	Ball	20	21	2
54-1930	Fender R.H.	5	1	1	56-3020	Body - Check Valve	20	22	2
54-1940	Fender L.H.	5	36	1	56-3030	Ball	20	25	1
54-1950	Bracket - Support Bearing	1	22	2	56-3040	Spring - Relief Valve	20	24	1
54-2000	Pin - Pivot	11	13	1	56-3050	Plug - Relief Valve	20	23	1
54-2040	Follower Lever	2	54	1	56-3060	Pin - Dowel	20	26	1
54-2060	Bellcrank Assembly	18	41	1	56-3080	Ring - Retaining	21	49	1
54-2070	Anchor - Spring	5	18	1	56-3090	Ring - Retaining	21	48	2
54-2100	Pin - Pivot	11	39	2	56-3100	Screw - Hex. Socket Hd.	21	45	4
54-2110	Lever - Brake	11	2	1	56-3110	Pin - Roll	21	44	6
54-2120	Link - Parking Brake	11	1	1	56-3120	Carrier	20	3	1
54-2160	Bracket - Anchor	14	10	1	56-3130	Seal - Oil	21	43	1
54-2260	Pad Footrest L.H.	2	62	1	56-3140	Control Shaft Kit	21	42	1
54-2270	Pad - Footrest R.H.	2	68	1	56-3170	Insert - Cam Ring	20	30	1
54-2290	Pipe - Exhaust	14	13	1	56-3180	Spring - Valve	20	27	2
54-2310	Hydraulic Tube Assembly	17	2	1	56-3200	Body - Valve	20	28	2
54-2310	Hydraulic Tube Assembly	13	28	1	56-3210	Ball	20	29	2
54-2330	Pulley - Engine	14	19	1	56-3220	Motor Rotor & Ball Assembly	21	39	1
54-2380	Pulley - Input	18	28	1	56-3230	Output Shaft Assembly	21	40	1
54-2390	Pulley - Output	18	1	1	56-3240	Race - Motor	21	41	1
54-2470	Reservoir - Hydraulic	13	34	1	56-3250	Plug Assembly	21	33	1
54-2500	Channel - Middle	5	19	1	56-3260	"O"Ring	21	34	1
54-2570	Hydraulic Hose Assembly	17	4	1	56-3270	Seal - Oil	21	35	1
54-2580	Hydraulic Hose Assembly	17	3	1	56-3280	Bearing - Output	21	36	1
54-2590	Hydraulic Hose Assembly	17	7	1	56-3290	Ring - Retaining	21	37	1
54-2610	Hydraulic Hose Assembly	17	5	1	56-3300	Screw - Hex. Socket Hd.	21	38	2
54-2620	Hydraulic Hose Assembly	17	6	1	56-3310	Kit - Overhaul Seal	21	*	1
54-2630	Follower - Steering Shaft	2	53	1	56-3320	THook	11	20	1
54-2640	Cable - Traction Control	2	44	1	56-3370	Bracket - Spring	11	22	2
54-3110	Hinge - Seat	8	3	1	56-3390	Hydraulic Hose Assembly	17	1	1
54-8970	UBolt	18	22	1	56-6590	Screw	8	14	1
54-9200	Lever - Idler	6	52	2	56-6920	Bracket - Cable Extension	11	40	1
55-3570	Cap - Fuel	13	2	1	57-3100	Tie Rod - Steering	3	35	2
55-3630	Adjustable Relief Valve	10	*	1	59-1470	Shaft - Bellcrank	18	43	1
55-3640	Seat - Relief	10	8	1	59-1500	Pivot - Axle	3	19	1
55-3650	Plug	10	26	1	59-1550	Pedal - Shaft	2	65	1
55-4300	Decal	11	43	1	59-1610	Tube - Grease Fitting	1	14	1
55-4320	Gasket	19	2		59-1620	Bracket - Transaxle	18	15	1
55-4860	Guide - Belt	5	37	1	60-8990	Plate - Transaxle	18	17	1
55-7120	Switch - Brake	11	9	1	60-9050	Bearing - Steering Shaft	2	46	1
55-7310	Bracket - Idler	11	34	1	60-9130	Bracket - Jackshaft	18	3	1
55-8660	Assembly - Clamp	14	9	1	60-9140	Frame - Footrest	2	51	1
56-2760	Spring - Extension	11	21	2	60-9150	Tunnel	2	66	1
56-2800	Screw - Hex. Socket Hd.	20	1	1	61-3610	Decal - Warning	11	29	2
56-2810	Bearing - Input	21	47	1	61-9780	Hub Cap	3	1	2
56-2820	Seal - Oil	21	46	1	62-4040	Tank - Fuel	13	15	1
56-2830	Charge Pump Assembly	20	2	1	62-4420	Spacer	3	32	9
56-2850	Ring - Seal	20	4	1	62-4530	Idler - VBelt	5	43	2
56-2860	Plate - Pump	20	5	1	62-4540	Idler - Flat	6	56	2
56-2870	Ring - Seal	20	6	1	62-6780	Shaft - Steering	2	30	1
56-2880	Button	20	7	2	62-7400	Decal - Toro	2	70	1
56-2890	Pin - Dowel	20	8	1	63-7590	Relay	8	42	1
56-2900	Pin - Drive	20	9	1	63-8360	Key	2	35	2
56-2910	Input Shaft Assembly	20	10	1	63-8440	Decal - Hot Surface	14	5	1
56-2920	Ring - Seal	20	11	1	65-5100	Handle	13	41	1
56-2930	Pump Rotor & Ball Assembly	20	12	1	66-0120	Knob	1	26	2

*Not Illustrated

TORO PART NUMBER INDEX (Cont.)

3316-997

Part No.	Description	Pg. No.	Ref. No.	Qty.	Part No.	Description	Pg. No.	Ref. No.	Qty.
66-1570	Frame - Lift	11	14	1	237-42	"O"Ring	13	30	2
68-7330	Decal - Danger	13	*	1	237-78	"O"Ring	11	17	2
72-4060	Bearing Assembly	18	9	2	237-78	"O"Ring	8	19	2
74-0110	Pedal - Traction	1	11	1	237-79	"O"Ring	19	7	2
74-0720	Tube - Manual	8	41	1	237-79	"O"Ring	6	62	1
75-4130	Spacer	19	27	2	237-80	"O"Ring	19	49	2
75-5470	Spacer Bearing	19	22	1	237-100	Grommet	13	19	1
75-6820	Meter - Hour	8	29	1	242-50	Nut	4	6	8
76-8640	Stud - Traction	19	13	1	242-60	Rim	3	6	2
76-9430	Spring - Extension	18	19	1	242-71	Bolt - Wheel	4	1	8
76-9430	Spring - Extension	19	9		242-76	Rim	4	8	2
77-0981	Boot - Terminal	13	10	1	2411-34	Ball Joint	1	16	1
77-3100	Decal - Caution	5	7	2	2411-34	Joint - Ball	19	30	1
80-3750	Spacer	18	12	2	2412-92	Clamp - Hose	14	32	1
80-3760	Support - Seat, Front	8	2	1	2412-93	Clamp - Hose	9	7	1
80-4910	Footrest - R.H.	2	69	1	2412-93	Clamp - Hose	8	47	1
80-4920	Pedal - Accelerator	1	8	1	2412-93	Clamp - Hose	14	3	2
80-4930	Footrest - Pedal	1	6	1	2412-100	JClamp	5	13	2
82-4640	Battery	13	12	1	2412-100	RClamp	13	22	1
82-4680	Lever - Valve	8	10	1	2412-108	Clamp - Hose	13	23	4
82-4700	Bracket - Lever, Valve	8	20	1	2412-120	RClamp	8	38	2
82-4720	Pad - Footrest	2	74	1	251-210	Bearing - Ball	3	3	4
88-9830	Switch - Ignition	2	36	1	251-288	Bearing w/Collar	18	24	2
92-5435	Support - Seat L.H.	8	32	1	251-291	Bearing - Pulley	15	8	1
92-6250	Mount - Engine	5	10	1	251-292	Bearing - Field	15	2	1
92-6251	Mount - Engine	5	12	1	251-304	Rod End	3	33	2
92-6252	Mount - Cylinder	6	47	1	251-304	Rod End	2	57	1
92-6254	Bar - Tension	5	24	1	251-304	Rod End	18	35	1
92-6255	Axle - Rear	3	10	1	251-305	Rod End	3	25	3
92-6257	Plate - Pivot	3	24	1	251-305	Rod End	18	37	1
92-6259	Bracket	8	43	1	251-307	Bearing	19	19	2
92-6260	Duct - Engine	14	6	1	251-341	Flange - Bearing	18	31	4
92-6266	Panel - Tower Rear	2	37	1	256-154	Bushing	11	32	2
92-6267	Shield - Heat	13	21	1	256-156	Bushing	1	10	2
92-6269	Lever - Traction	19	28	2	283-17	Pin - Clevis	8	16	1
92-6273	Bracket - Spring	18	23	1	283-55	Pin - Clevis	11	23	1
92-6274	Plug - Cap	13	25	1	288-10	Cap - Pipe	14	28	1
92-6276	Decal - ProLine 120	13	37	2	289-46	Nipple - Pipe	14	27	1
92-6277	Decal - Switch	2	40	1	302-2	Fitting - Grease	18	20	2
92-6278	Decal - Throttle Choke	2	32	1	302-5	Fitting - Grease	3	4	4
92-6279	Harness - Wire	16	*	1	302-22	Fitting - Grease	1	13	1
92-6280	Seat	9	1	1	302-49	Fitting - Grease	3	21	3
92-6281	Plate - Seat	8	12	1	302-49	Fitting - Grease	18	25	1
92-6282	Switch - Seat	9	11	1	302-60	Fitting - Grease 90°	19	10	
92-6283	Hose - Fuel	13	24	2	321-2	Screw	11	36	2
92-6284	Plate - Adapter, Seat	9	5	2	321-2	Screw - Hex. Hd.	1	27	4
92-6287	Wire - Ground	14	25	1	321-2	Screw - Hex. Hd.	19	43	1
92-6288	Decal - Service	13	40	1	321-3	Screw	6	49	2
92-6289	Swing Arm Assembly	19	11		321-3	Screw - Hex. Hd.	1	9	2
92-6290	Spacer	19	20	1	321-3	Screw - Hex. Hd.	13	1	2
92-6291	Decal - Refueling	13	38	1	321-4	Screw	9	10	2
92-6292	Pad - Fender R.H.	5	2	1	321-4	Screw	3	15	4
92-6293	Pad - Fender L.H.	5	38	1	321-4	Screw	8	36	5
94-1296	Hose - Carburetor	14	2	1	321-4	Screw - Hex. Hd.	2	61	14
94-1297	Engine - Kohler 20 HP	14	1	1	321-14	Screw	8	7	2
231-122	Tire	4	9	2	321-14	Screw	5	16	2
231-126	Tire	3	5	2	321-23	Screw	8	9	2
232-27	Valve Stem w/Cap	4	7	2	322-2	Screw	5	30	4
232-27	Valve Stem w/Cap	3	36	2	322-3	Screw - Hex. Hd.	13	5	2
233-37	Knob	11	3	1	322-4	Screw	9	4	4
233-37	Knob	8	11	1	322-4	Screw	8	6	12
237-42	"O"Ring	10	20	2	322-4	Screw	5	26	13
237-42	"O"Ring	8	24	2	322-4	Screw	11	33	4

*Not Illustrated

TORO PART NUMBER INDEX (Cont.)

Part No.	Description	Pg. Ref.		Part No.	Description	Pg. Ref.	
		No.	Qty.			No.	Qty.
322-4	Screw - Hex. Hd.	1	2	3256-3	Washer - Flat	6	54
322-4	Screw - Hex. Hd.	18	18	3256-4	Washer - Flat	3	26
322-4	Screw - Hex. Hd.	18	5	3256-4	Washer - Flat	2	56
322-4	Screw - Hex. Hd.	13	17	3256-23	Washer - Flat	5	4
322-5	Screw	9	6	3256-23	Washer - Flat	8	5
322-6	Screw	5	9	3256-23	Washer - Flat	2	49
322-6	Screw	11	11	3256-24	Washer - Flat	11	4
322-6	Screw	5	23	3256-39	Washer	3	40
322-6	Screw - Hex. Hd.	19	15	3256-51	Washer	8	39
322-7	Screw - Hex. Hd.	19	17	3256-55	Washer	19	41
322-10	Screw	4	5	3256-68	Washer	19	8
322-10	Screw - Hex. Hd.	2	67	3257-5	Key - Woodruff	18	26
322-10	Screw - Hex. Hd.	18	11	3257-5	Key - Woodruff	19	36
323-7	Screw	5	20	3257-10	Key - Woodruff	4	3
323-8	Screw - Hex. Hd.	18	10	3257-24	Key - Woodruff	19	5
323-9	Screw	14	30	3258-19	Screw - Round Hd.	7	7
323-9	Screw	6	57	3272-6	Pin - Cotter	8	15
323-10	Screw	11	25	3272-10	Pin - Cotter	11	5
323-10	Screw - Hex. Hd.	14	22	3272-12	Pin - Cotter	3	37
323-11	Screw	5	42	3290-211	Washer - Spring	5	29
323-12	Screw - Hex. Hd.	14	23	3290-250	Pin - Cotter	5	15
323-13	Screw - Hex. Hd.	19	46	3290-355	Pin - Cotter	11	24
323-14	Screw - Hex. Hd.	19	34	3290-357	Nut - Wizz	14	31
323-16	Screw - Hex. Hd.	19	47	3290-379	Cable Tie	6	66
324-7	Screw	3	27	3290-440	Washer - Belleville	2	42
324-7	Screw - Hex. Hd.	2	58	3296-3	Nut - Hex.	1	15
324-7	Screw - Hex. Hd.	18	36	3296-3	Nut - Lock	19	32
324-11	Screw - Hex. Hd.	14	12	3296-6	Nut	11	35
325-6	Screw	3	38	3296-6	Nut - Lock	15	9
327-24	Screw	6	48	3296-9	Nut	19	25
3212-24	Screw - Hex. Hd.	14	15	3296-15	Nut	11	41
3217-6	Nut	19	16	3296-25	Nut	19	29
3217-6	Nut - Square	14	7	3296-29	Nut - Lock	8	4
3220-1	Nut - Hex. Jam	19	31	3296-29	Nut - Lock	11	7
3220-1	Nut - Jam	1	17	3296-29	Nut - Lock	5	14
3220-4	Nut - Hex. Jam	18	38	3296-29	Nut - Lock	3	16
3220-4	Nut - Jam	3	28	3296-29	Nut - Lock	13	7
3220-6	Nut - Jam	11	12	3296-29	Nut - Lock	18	4A/R
3220-19	Nut - Jam	3	34	3296-29	Nut - Lock	4	4
3229-1	Bolt - Carriage	13	11	3296-29	Nut - Lock	9	8
3230-1	Bolt - Carriage	18	30	3296-29	Nut - Lock	19	14A/R
3230-3	Bolt - Carriage	14	20	3296-29	Nut - Lock	1	18
3234-1	Screw - Hex. Flange Hd.	18	14	3296-39	Nut	8	37
3234-14	Screw	5	3	3296-39	Nut	14	26
3241-1	Screw - Set	18	2	3296-41	Nut - Hex.	3	12
3241-2	Screw - Set	19	37	3296-42	Nut - Lock	6	65
3245-35	Screw - Set	18	8	3296-42	Nut - Lock	13	14
3250-46	Screw	19	33	3296-42	Nut - Lock	8	21
3253-3	Washer	11	37	3296-42	Nut - Lock	1	23
3253-3	Washer - Lock	19	42	3296-44	Nut - Lock	11	28
3253-3	Washer - Lock	6	50	3296-44	Nut - Lock	5	17
3253-4	Washer - Lock	14	8	3296-44	Nut - Lock	18	6
3253-5	Washer - Lock	19	39	3296-48	Nut	3	23
3253-5	Washer - Lock	19	48	3296-48	Nut - Lock	18	39
3253-6	Washer - Lock	14	11	3296-48	Nut - Lock	2	55
3253-7	Washer	3	39	3296-61	Nut	6	46
3254-6	Washer - Lock, Int. Tooth	14	24	32103-22	Nut - Wing	13	8
3255-5	Washer - Lock	19	45	32104-76	Screw	8	40
3255-8	Washer - Lock, Ext. Tooth	6	69	32107-11	Nut - Square	7	8
3256-1	Washer	13	13	32115-5	Nut - Square	2	60
3256-1	Washer	11	38	32120-64	Ring - Snap	19	1
3256-1	Washer - Flat	8	25	32121-10	Pin - Roll	1	28
3256-3	Washer - Flat	18	7	32121-20	Pin - Roll	1	19

*Not Illustrated

TORO PART NUMBER INDEX (Cont.) 3316-997

Part No.	Description	Pg. Ref. No. No. Qty.	Part No.	Description	Pg. Ref. No. No. Qty.
32121-31	Pin - Roll	1 20 2	32151-48	Ring - Retaining	3 11 2
32121-51	Pin - Roll	1 7 1	32152-10	Nut - Lock	12 2 1
32121-51	Pin - Roll	3 30 1	32153-3	Nut	11 15 2
32121-77	Pin Roll	2 59 2	353-370	Fitting - Hydraulic 90°	19 6 2
32128-20	Nut - Flange Lock	2 48 2	353-371	Fitting - 90°	6 61 2
32128-20	Nut - Flange Lock	6 67 1	353-375	Fitting - 90°	11 19 1
32144-1	Screw - Thread Forming	11 10 2	353-375	Fitting - 90°	8 22 1
32144-11	Screw - Thread Forming	5 5 2	353-385	Fitting - Hydraulic Straight	13 29 2
32144-15	Screw	3 18 2	353-431	Fitting - 45°	11 16 1
32144-18	Screw	8 45 2	353-511	Fitting	8 17 2
32144-19	Screw - Round Hd.	19 44 3	353-511	Fitting - Hydraulic 90°	19 35 2
32149-1	Nut - Lock	5 27 1	353-545	Fitting	8 18 1
32149-1	Nut - Lock	18 32 6			

*Not Illustrated

PRODUCT CHANGES

In an effort to make improvements available to TORO owners as quickly as possible, minor changes are incorporated into Toro's products from time to time that do not become immediately shown in the Parts Catalog. If such a change has been made in your unit, which is not reflected in your manual, see your TORO Distributor or his Authorized TORO Service Dealer for information and part numbers.

IDENTIFICATION AND ORDERING

MODEL AND SERIAL NUMBERS

The ProLine 120 has two identification numbers; a model number and a serial number. The two numbers are stamped on a plate which is located on the main frame under the seat. In any correspondence concerning the ProLine 120, supply model and serial numbers to assure that correct information and replacement parts are obtained.

To order replacement parts from an Authorized TORO Service Dealer, supply the following information:

1. Model and serial number of the ProLine 120.
2. Part number, description, and the quantity of part(s) desired.

NOTE: Do not order by reference number if a parts catalog is being used; use the PART NUMBER.

TABLE OF CONTENTS

Description	Page	Description	Page
Frame And Steering Assembly	1	Transmission Assembly	19
Rear Axle Assembly	3	Hydrostatic Transmission Assembly	20
Front Wheel Assembly	4	Differential Assembly	22
Frame And Jackshaft Assembly	5	Engine Kohler Model CH2OQS Spec 64556	
Air Cleaner Assembly	7	Baffles & Shroud	24
Seat Support Assembly	8	Oil Pan/Lubrication	25
Seat Assembly	9	Crankcase	26
Valve Assembly No.54-0090	10	Cylinder Head, Valve & Breather	27
Parking Brake & Frame Assembly	11	Crankshaft, Piston & Rings	28
Hydraulic Lift Cylinder No. 54-0150	12	Carburetor And Fuel Pump	29
Hood, Fuel Tank & Hydraulic Reservoir Assembly	13	Air Intake / Filtration	30
Engine Assembly	14	Throttle Linkage & Governor Control	31
Clutch Assembly No. 54-0220	15	Starter	32
Electric Schematic	16	Ignition And Charging System	33
Hydraulic Schematic	17	Exhaust	34
Differential Assembly	18	Numeric Index, Toro P/N Only	35

Optional equipment

Description	Model No./Part No.	Description	Model No./Part No.
Flotation Kit	30759	44" Grass Collection System	30751
44" Deck Baffle Kit	60-9030	52" Grass Collection System	30576
52" Deck Baffle Kit	68-7210	44" Recycler Kit	59220
44" Leaf Mulcher Deck	30752	52" Recycler Kit	59225
52" Leaf Mulcher Deck	30700	Brake Kit	30758
Wheel Weight Kit	56-6620	Tire Chain Kit	56-6630
44" Snowthrower	30761	Rear Weight	62-6590
44" Side Discharge Deck	30544	Cab Kit	
48" Rear Discharge Deck	30747		
52" Side Discharge Deck	30753	European Complacence Parts Kit	93-9450