



GrandStand[®] Mower With 48in TURBO FORCE[®] Cutting Unit

Model No. 74558 - 290003001 and up.

Parts Catalog

Ordering Replacement Parts

To order replacement parts, please supply the part number, the quantity, and the description of each part desired.

Understanding Reference Numbers

Each Identified part in an illustration has a reference number. The reference number for a part also appears in the parts list, along with other information about the part.

This catalog uses two special reference number formats, one to indicate parts in a service assembly and another to indicate the quantity of a given part in an illustration.

Service Assembly Reference Numbers

Parts in service assemblies have reference numbers in the form a:b. The a represents the reference number of the entire service assembly and the b represents a sequential number unique to each part within the service assembly.

For example, a wheel assembly might be identified by reference number 6, the tire by 6:1, the valve by 6:2, and the wheel by 6:3. When you order the assembly identified by reference number 6, you receive all parts identified by reference numbers 6:1, 6:2, and 6:3. However, you may also order any part individually. Reference numbers of this type appear in illustrations and in part lists.

Reference Numbers Indicating Quantity

In an illustration, if a reference number indicates more than one part, the reference number has the form nX y. The n represents the quantity of the part, the X is the multiplication symbol, and the y represents the reference number.

For example, in an illustration, the reference number 2X 37 means that two of the parts identified by reference number 37 are indicated.

Contents

| Description | Page | Description | Page |
|---------------------------------------|------|--|------|
| 48 Inch Deck Assembly | 3 | Cylinder and Crankcase Assembly Kawasaki FH580V-FS30 | 26 |
| Deck Assembly No. 117-5764 | 4 | Piston and Crankshaft Assembly Kawasaki FH580V-FS30 | 27 |
| Spring Idler Assembly No. 117-0445 | 5 | Valve and Camshaft Assembly Kawasaki FH580V-FS30 | 28 |
| Idler Adjust Assembly No. 117-0446 | 6 | Lubrication Equipment Assembly Kawasaki FH580V-FS30 | 29 |
| Spindle Assembly No. 107-8504 | 7 | Cooling Equipment Assembly Kawasaki FH580V-FS30 | 30 |
| Deflector Assembly No. 114-1910 | 8 | Electric Equipment Assembly Kawasaki FH580V-FS30 | 31 |
| Wheel Assembly | 9 | Control Equipment Assembly Kawasaki FH580V-FS30 | 32 |
| Frame and Muffler Guard Assembly | 10 | Carburetor Assembly Kawasaki FH580V-FS30 | 33 |
| Deck Lift Assembly | 11 | Air Filter and Muffler Assembly Kawasaki FH580V-FS30 | 34 |
| Upper Control and Tower Assembly | 12 | Fuel Tank and Valve Assembly Kawasaki FH580V-FS30 | 35 |
| Lower Control Assembly | 13 | Starter Assembly Kawasaki FH580V-FS30 | 36 |
| Hydraulic Assembly | 14 | Label Assembly Kawasaki FH580V-FS30 | 37 |
| Hydraulic Motor Assembly No. 114-0549 | 16 | Attachments and Accessories List | 38 |
| Hydraulic Pump Assembly No. 117-3597 | 17 | | |
| Hydraulic Belt Drive Assembly | 18 | | |
| Platform Assembly | 19 | | |
| Cushion Assembly No. 114-1917 | 20 | | |
| Platform Assembly No. 117-9640 | 21 | | |
| Parking Brake Assembly | 22 | | |
| Electrical Assembly | 23 | | |
| Fuel Tank Assembly | 24 | | |
| Engine Assembly | 25 | | |

Part Description Abbreviations

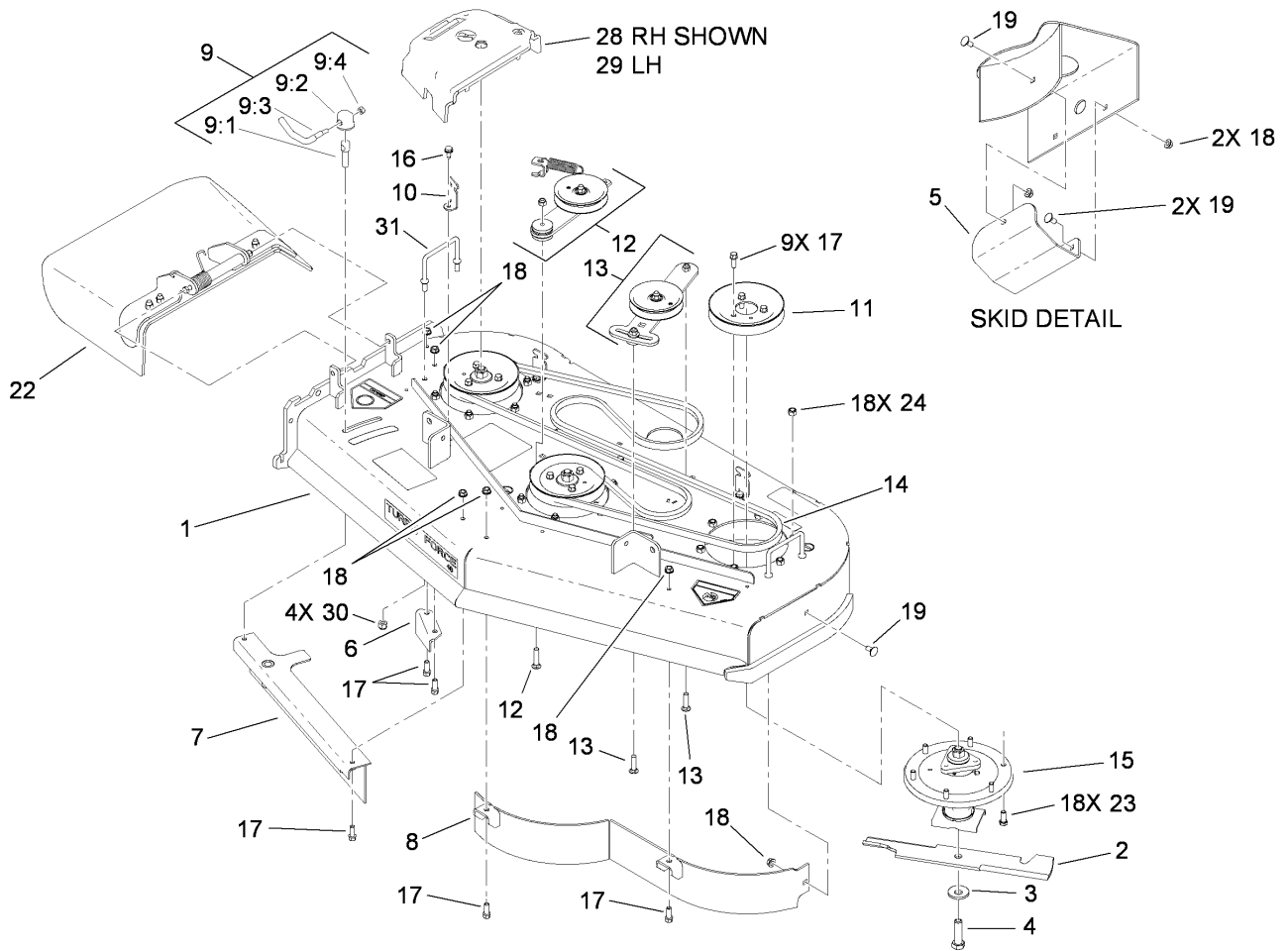
Part descriptions in this catalog may include the following abbreviations.

| | |
|--|--|
| AR. as required | HWHTF. hex washer head thread forming |
| ASM. assembly | HYD. hydraulic |
| BBC. blade brake clutch | LH. left hand |
| CARR. carriage | NI. nylon insert |
| CCW. counter clock wise | NPTF. national pipe thread fine |
| CW. clockwise | PFH. phillips flat head |
| DEG. degrees | PPH. phillips pan head |
| ECM. electronic control module | PPHTF. phillips pan head thread forming |
| EXT. external | PRH. phillips round head |
| FH. flat head | PTH. phillips truss head |
| GA. gauge | PTO. power-take-off |
| HD. heavy-duty | RH. right hand |
| HF. hex flange | ROPS. roll-over protection system |
| HH. hex head | SFH. slotted fillister head |
| HHF. hex head flange | SHH. slotted hex head |
| HHFTF. hex head flange thread forming | SHWH. slotted hex washer head |
| HJ. hex jam | SPH. slotted pan head |
| HLH. hex lag head | SQH. square head |
| HOC. height-of-cut | SRH. slotted round head |
| HSBH. hex socket button head | STD. standard |
| HSFH. hex socket flat head | TAP. self tapping |
| HSH. hex socket head | TTH. torx truss head |
| HWH. hex washer head | |

Footnotes

❶ Not serviced separately

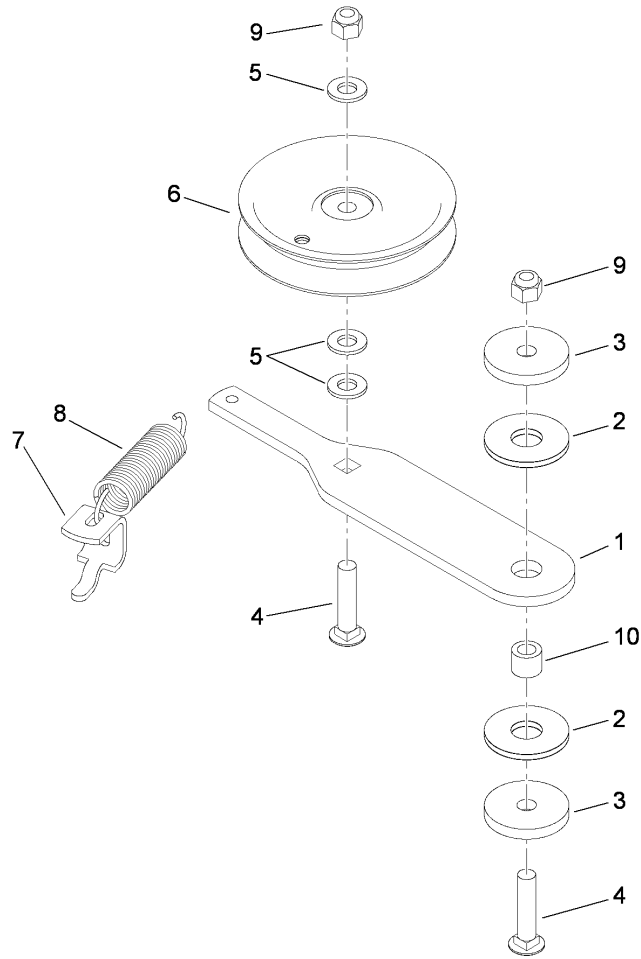
❷ Obtain parts from www.kawpowerepc.com



48 Inch Deck Assembly

| Ref | Part No. | Qty. | Description |
|-----|-------------|------|-----------------------------|
| 1 | 117-5764 | 1 | Deck ASM |
| 2 | 107-3192-03 | 3 | Blade-16.5 Inch (High Flow) |
| 3 | 103-0865 | 3 | Washer-Blade Bolt, Heavy |
| 4 | 103-0862 | 3 | Screw-Cap |
| 5 | 114-1908-01 | 1 | Skid |
| 6 | 107-8541-01 | 1 | Baffle-Discharge |
| 7 | 105-7755-01 | 1 | Baffle ASM |
| 8 | 117-0410-01 | 1 | 48 Inch Baffle ASM |
| 9 | 107-1664 | 1 | Lever ASM |
| 9:1 | 106-3239 | 1 | Screw-Lock |
| 9:2 | 107-1644 | 1 | Cap-Lock |
| 9:3 | 106-3241 | 1 | Lever-Lock |
| 9:4 | 3296-29 | 1 | Nut-Lock, NI |
| 10 | 117-5758-03 | 4 | Bracket-Cover |
| 11 | 115-7440 | 3 | Pulley |
| 12 | 117-0445 | 1 | Spring Idler ASM |
| 13 | 117-0446 | 1 | Idler Adjust ASM |
| 14 | 114-0453 | 1 | Belt-V |
| 15 | 107-8504 | 3 | Spindle ASM |
| 16 | 32144-70 | 4 | Screw-HWHTF |
| 17 | 92-1624 | 14 | Screw-HWH |
| 18 | 3290-357 | 9 | Nut-HHF, Whiz |
| 19 | 3231-1 | 4 | Screw-CARR |
| 22 | 114-1910 | 1 | Deflector ASM |

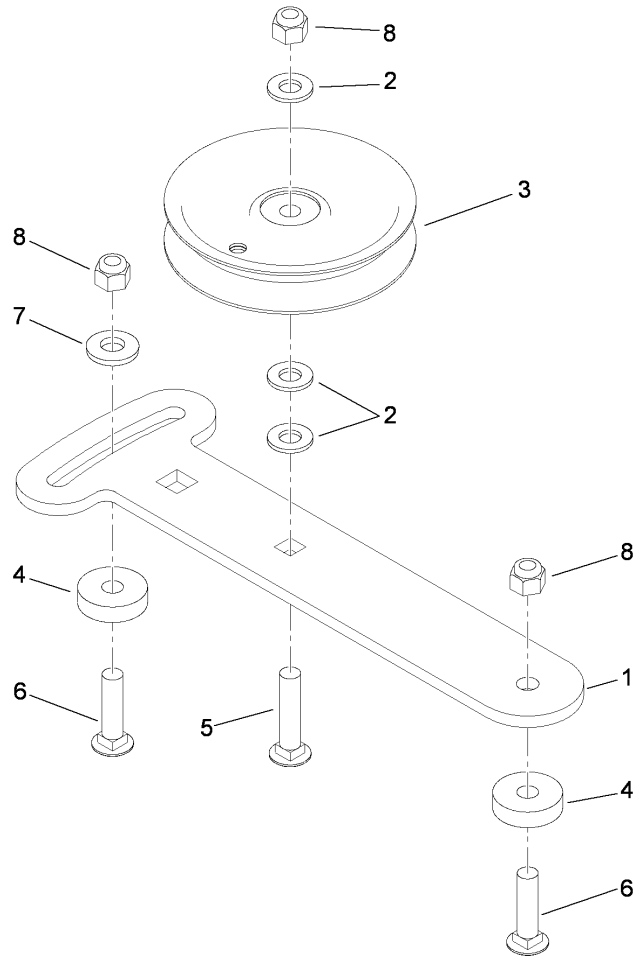
| Ref | Part No. | Qty. | Description |
|-----|-----------|------|----------------|
| 23 | 33115-025 | 18 | Screw-HH |
| 24 | 33025-00 | 18 | Nut-Lock |
| 28 | 109-6935 | 1 | Cover-Belt, RH |
| 29 | 109-6936 | 1 | Cover-Belt, LH |
| 30 | 3296-39 | 4 | Nut-Lock, NI |
| 31 | 109-6982 | 2 | Wireform-Cover |



Spring Idler Assembly No. 117-0445

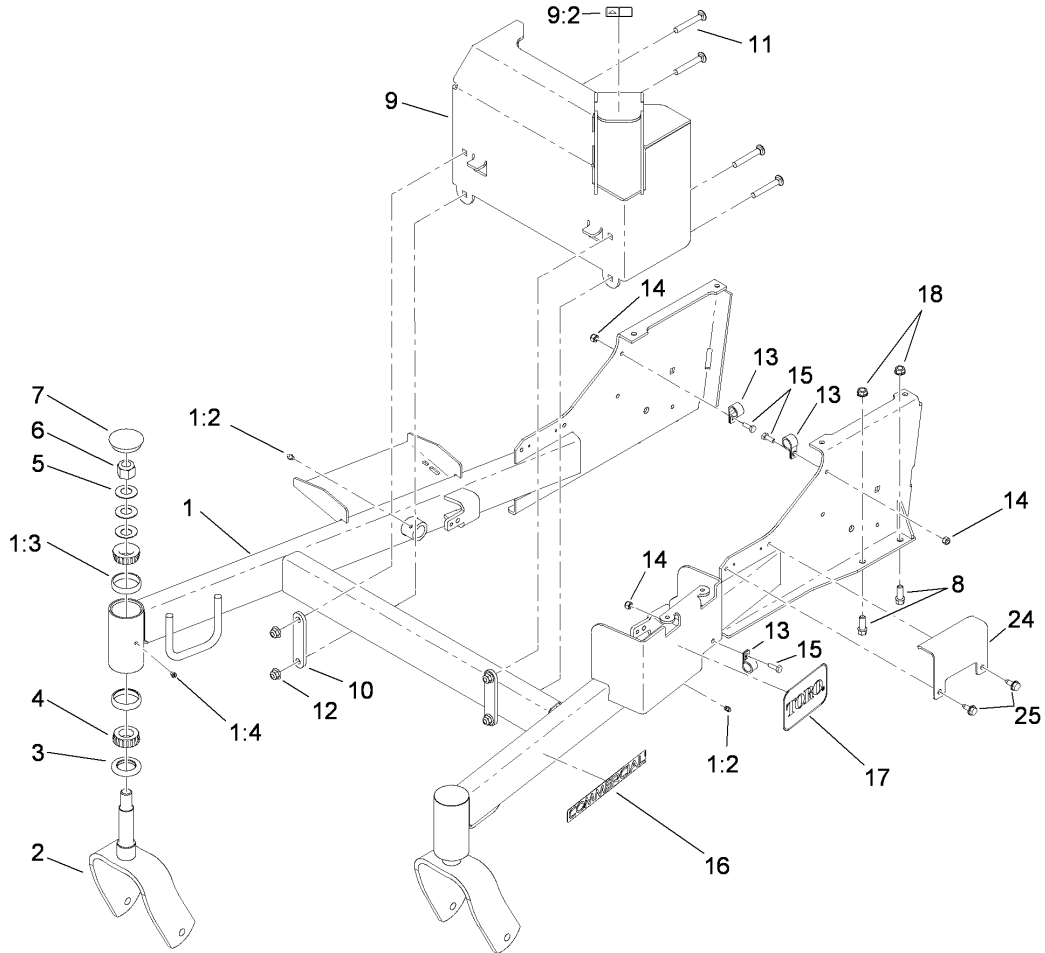
| Ref | Part No. | Qty. | Description |
|-----|-------------|------|----------------------------|
| 1 | 114-1992 | 1 | Plate-Idler |
| 2 | 114-0463 | 2 | Washer-Friction, Composite |
| 3 | 110-9981 | 2 | Washer-Plain |
| 4 | 3231-5 | 2 | Screw-CARR |
| 5 | 3256-24 | 3 | Washer-Flat |
| 6 | 93-1622 | 1 | Pulley-Idler |
| 7 | 117-0447-01 | 1 | Bracket-Anchor, Spring |
| 8 | 108-4056 | 1 | Spring-Extension |
| 9 | 3296-39 | 2 | Nut-Lock, NI |
| 10 | 1-413088 | 1 | Bushing-Lever, Lift |

| | | | |
|--|--|--|--|
| | | | |
|--|--|--|--|



Idler Adjust Assembly No. 117-0446

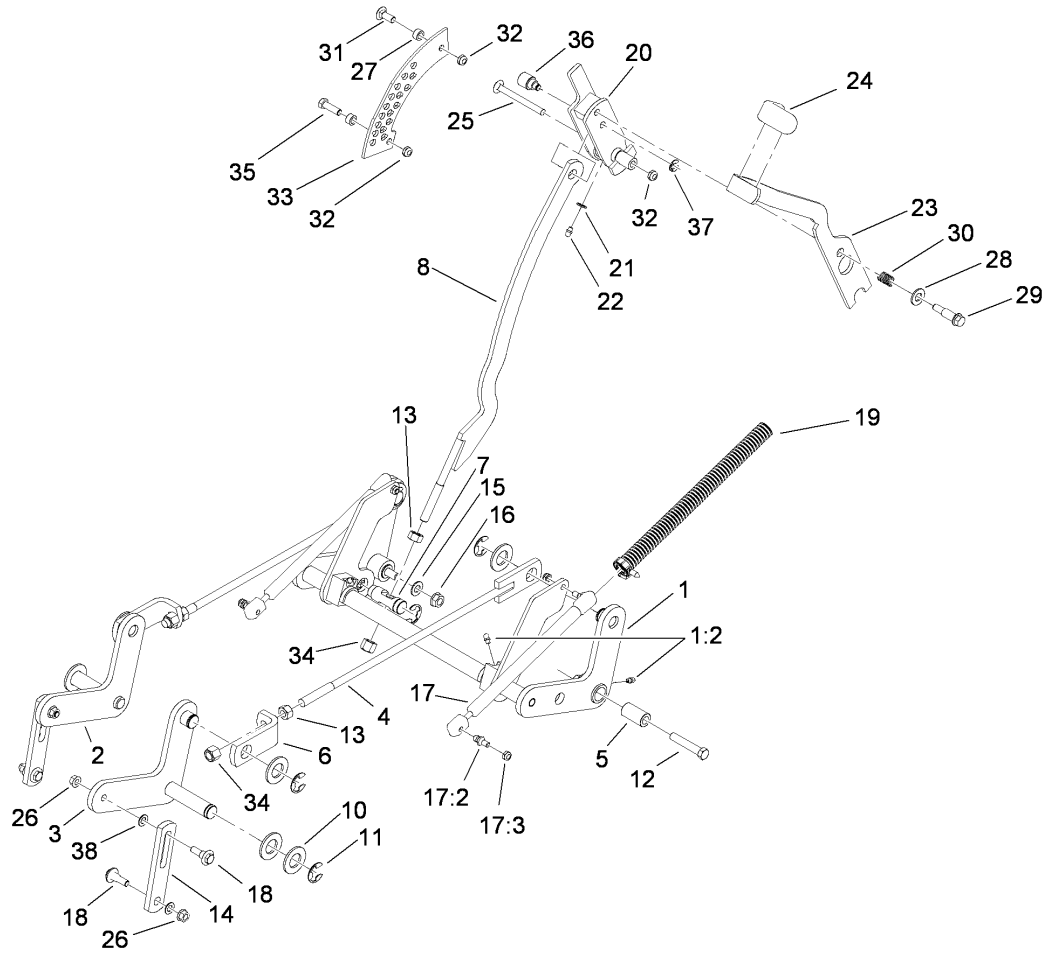
| Ref | Part No. | Qty. | Description |
|-----|----------|------|-------------------|
| 1 | 114-1991 | 1 | Plate-Idler |
| 2 | 3256-24 | 3 | Washer-Flat |
| 3 | 93-1622 | 1 | Pulley-Idler |
| 4 | 105-7788 | 2 | Spacer |
| 5 | 3231-5 | 1 | Screw-CARR |
| 6 | 3231-4 | 2 | Screw-CARR |
| 7 | 98-5975 | 1 | Washer-Belleville |
| 8 | 3296-39 | 3 | Nut-Lock, NI |



Frame and Muffler Guard Assembly

| Ref | Part No. | Qty. | Description |
|-----|-------------|------|-------------------------|
| 1 | 117-9630 | 1 | Front Frame ASM |
| 1:2 | 302-5 | 2 | Fitting-Grease |
| 1:3 | 1-543508 | 4 | Cup-Bearing |
| 1:4 | 1-811010 | 2 | Plug |
| 2 | 103-8618-01 | 2 | Fork-Caster |
| 3 | 1-543511 | 2 | Seal-Grease |
| 4 | 1-543509 | 4 | Bearing-Roller, Tapered |
| 5 | 1-633508 | 6 | Washer-Bellville |
| 6 | 3296-51 | 2 | Nut-Lock, NI |
| 7 | 103-4882 | 2 | Cap-Grease |
| 8 | 92-1624 | 4 | Screw-HWH |
| 9 | 117-0434 | 1 | Muffler Guard ASM |
| 9:2 | 106-5517 | 1 | Decal-Surface, Hot |
| 10 | 117-0427-01 | 2 | Bracket-Mounting, Guard |
| 11 | 3231-31 | 4 | Screw-CARR |
| 12 | 104-8301 | 4 | Nut-Flange, NI |
| 13 | 2412-87 | 3 | Clamp-Cable |
| 14 | 3296-42 | 3 | Nut-Lock, NI |
| 15 | 321-4 | 3 | Screw-HH |
| 16 | 117-3591 | 2 | Decal-Commercial |
| 17 | 68-3640 | 1 | Decal |
| 18 | 3290-357 | 4 | Nut-HHF, Whiz |
| 24 | 117-2620-01 | 2 | Support-Hose |
| 25 | 32144-70 | 4 | Screw-HWHTF |

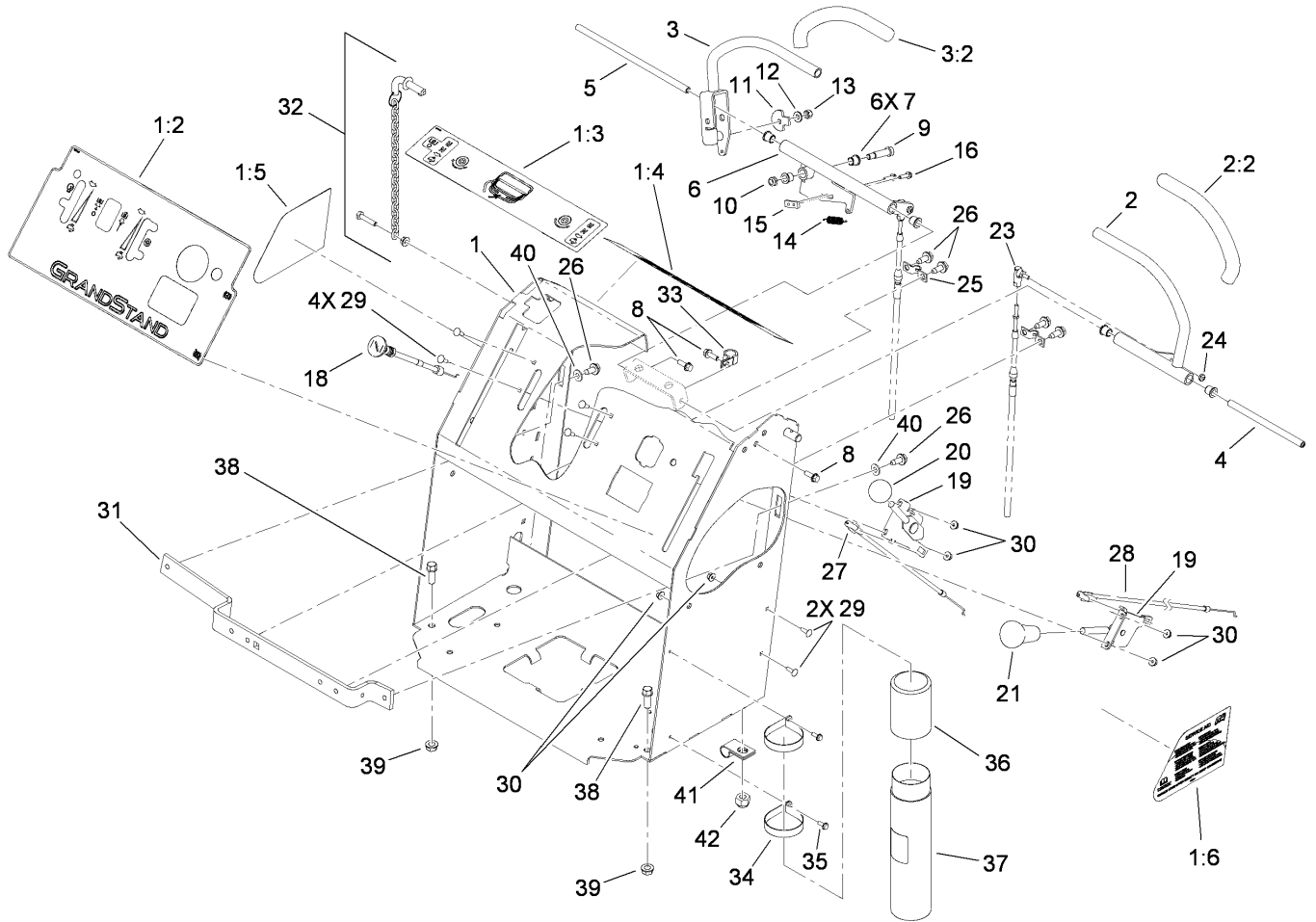
| | | | |
|--|--|--|--|
| | | | |
| | | | |
| | | | |
| | | | |



Deck Lift Assembly

| Ref | Part No. | Qty. | Description |
|------|-------------|------|---------------------|
| 1 | 117-0505 | 1 | Lift ASM |
| 1:2 | 302-5 | 4 | Fitting-Grease |
| 2 | 117-0489-01 | 1 | RH Lift ASM |
| 3 | 117-0488-01 | 1 | LH Lift ASM |
| 4 | 114-5268 | 2 | Lift Rod ASM |
| 5 | 117-0498 | 2 | Spacer |
| 6 | 117-0513 | 2 | Bracket-Rod, Lift |
| 7 | 114-5274 | 1 | Pin-HOC |
| 8 | 117-3611 | 1 | Bar-Lift |
| 10 | 3256-29 | 8 | Washer-Flat |
| 11 | 32151-103 | 7 | Ring-Retaining, EXT |
| 12 | 324-10 | 2 | Screw-HH |
| 13 | 3217-9 | 3 | Nut-HH |
| 14 | 117-0519 | 2 | Link-Lift |
| 15 | 3256-25 | 2 | Washer-Flat |
| 16 | 3296-48 | 2 | Nut-Lock, NI |
| 17 | 117-0506 | 2 | Gas Spring ASM |
| 17:2 | 88-6770 | 2 | Stud-Ball |
| 17:3 | 3296-47 | 2 | Nut-Lock, NI |
| 18 | 109-9840 | 4 | Screw-Shoulder, HHF |
| 19 | 117-3575 | 2 | Cover-Spring |
| 20 | 114-3512 | 1 | HOC Handle ASM |
| 21 | 3256-22 | 1 | Washer-Flat |
| 22 | 302-5 | 1 | Fitting-Grease |

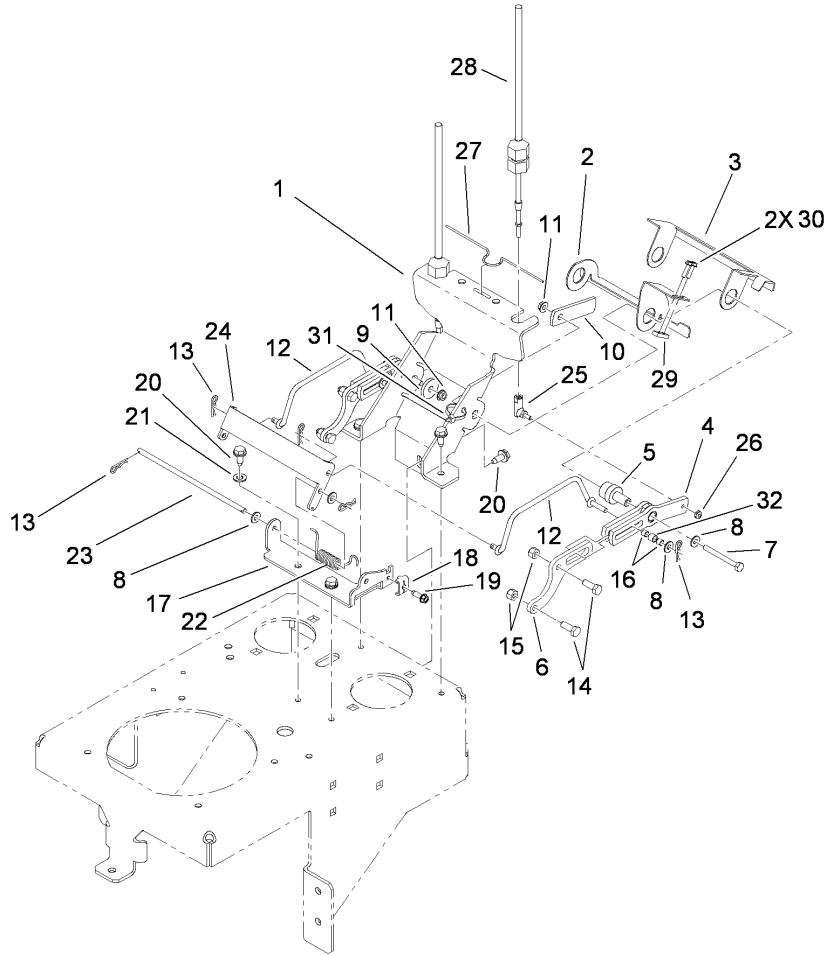
| Ref | Part No. | Qty. | Description |
|-----|-------------|------|-------------------|
| 23 | 114-5305-03 | 1 | Lever-HOC |
| 24 | 1-633268 | 1 | Grip-Lever, Brake |
| 25 | 3231-24 | 1 | Screw-CARR |
| 26 | 32128-21 | 4 | Nut-HF |
| 27 | 111044 | 2 | Spacer |
| 28 | 3256-26 | 1 | Washer-Flat |
| 29 | 66-0561 | 1 | Screw-Shoulder |
| 30 | 65-9940 | 1 | Spring |
| 31 | 3231-22 | 1 | Screw-CARR |
| 32 | 3296-59 | 3 | Nut-Lock, NI |
| 33 | 114-5307 | 1 | Bracket-HOC |
| 34 | 3296-23 | 3 | Nut-Lock, NI |
| 35 | 323-7 | 1 | Screw-HH |
| 36 | 117-3645 | 1 | Hub-Pivot |
| 37 | 32151-47 | 1 | Ring-Retaining |
| 38 | 40-1940 | 4 | Washer |



Upper Control and Tower Assembly

| Ref | Part No. | Qty. | Description |
|-----|----------|------|-----------------------------|
| 1 | 114-1922 | 1 | Control Tower ASM |
| 1:2 | 117-0453 | 1 | Decal-Panel, Control |
| 1:3 | 117-0454 | 1 | Decal-Opc |
| 1:4 | 117-3626 | 1 | Decal-Warning |
| 1:5 | 117-0456 | 1 | Decal-HOC |
| 1:6 | 117-0485 | 1 | Decal-Service Aid |
| 2 | 114-3593 | 1 | LH Lever ASM |
| 2:2 | 114-0241 | 1 | Grip-Lever |
| 3 | 114-3594 | 1 | RH Lever ASM |
| 3:2 | 114-0241 | 1 | Grip-Lever |
| 4 | 114-0260 | 1 | Shaft-Pivot |
| 5 | 114-1904 | 1 | Shaft-Pivot, Motion Control |
| 6 | 114-5302 | 1 | Motion Control ASM |
| 7 | 103-9928 | 6 | Bearing |
| 8 | 3234-4 | 3 | Screw-HHF |
| 9 | 114-0239 | 1 | Screw-HSH |
| 10 | 3296-47 | 1 | Nut-Lock, NI |
| 11 | 114-0268 | 1 | Cam-Lever, Handle Stop |
| 12 | 3256-22 | 1 | Washer-Flat |
| 13 | 3296-42 | 1 | Nut-Lock, NI |
| 14 | 114-0249 | 1 | Spring-Extension |
| 15 | 1-633181 | 1 | Plate-Tapped |
| 16 | 32105-13 | 2 | Screw-HWH |
| 18 | 106-9962 | 1 | Control-Choke, Push / Pull |

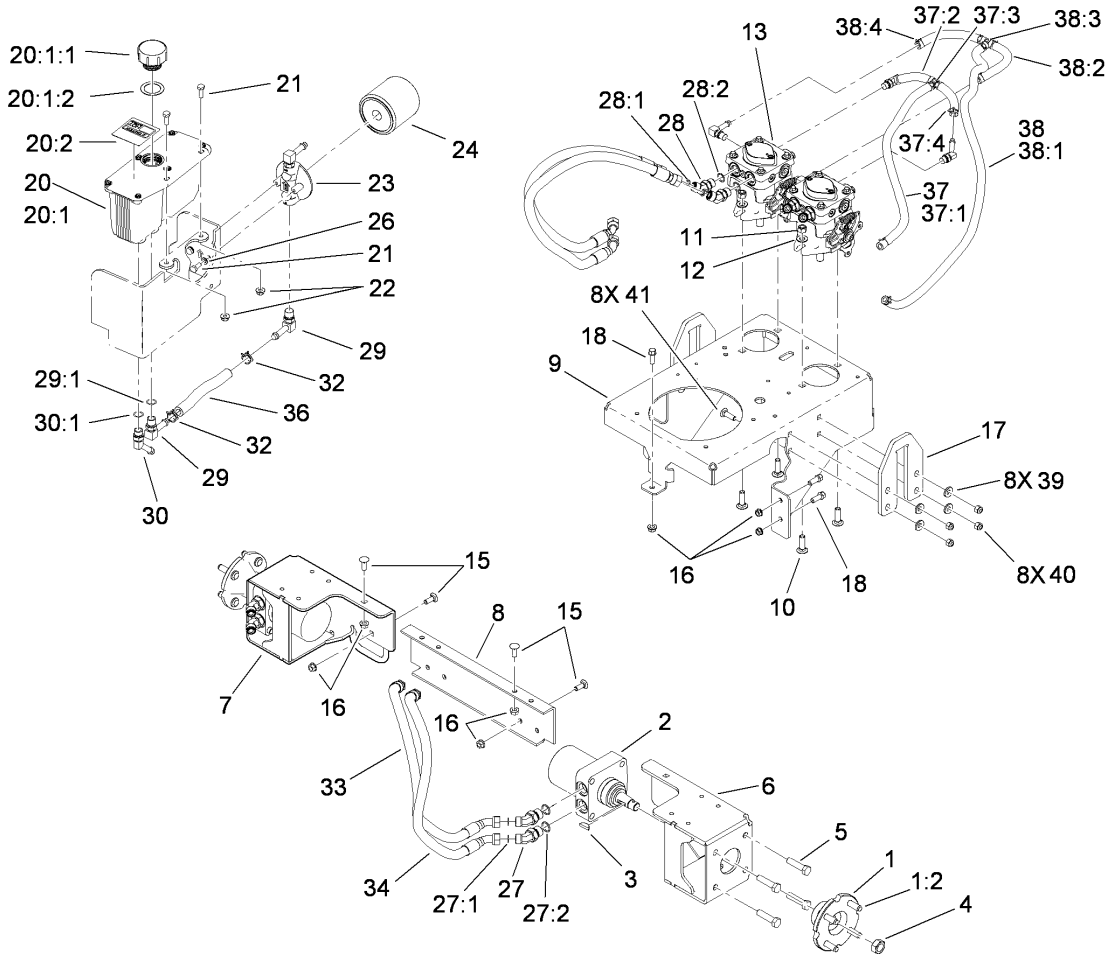
| Ref | Part No. | Qty. | Description |
|-----|-------------|------|-------------------|
| 19 | 110-5547 | 2 | Control Lever ASM |
| 20 | 1-603175 | 1 | Knob-Ball |
| 21 | 99-7981 | 1 | Knob-Grip, Soft |
| 23 | 2411-38 | 2 | Joint-Ball |
| 24 | 3296-27 | 2 | Nut-Lock, NI |
| 25 | 93-2279 | 2 | Clamp-Cable |
| 26 | 32144-70 | 6 | Screw-HWHTF |
| 27 | 114-1966 | 1 | Cable-Control |
| 28 | 114-1950 | 1 | Cable-Speed |
| 29 | 1-807533 | 6 | Bolt-CARR |
| 30 | 3290-148 | 6 | Nut-HF |
| 31 | 114-1921-01 | 1 | Bar-Cable |
| 32 | 114-0409 | 1 | HOC Pin ASM |
| 33 | 2412-87 | 1 | Clamp-Cable |
| 34 | 2412-120 | 2 | R-Clamp |
| 35 | 32144-1 | 2 | Screw-Taptite |
| 36 | 104-7048 | 1 | Cap-Housing |
| 37 | 104-7050 | 1 | Tube-Manual |
| 38 | 92-1624 | 4 | Screw-HWH |
| 39 | 3290-357 | 3 | Nut-HHF, Whiz |
| 40 | 3256-23 | 2 | Washer-Flat |
| 41 | 2412-138 | 1 | R-Clamp |
| 42 | 3296-39 | 1 | Nut-Lock, NI |



Lower Control Assembly

| Ref | Part No. | Qty. | Description |
|-----|-------------|------|----------------------|
| 1 | 114-5304-01 | 1 | Mount-Linkage, Drive |
| 2 | 114-1993 | 1 | Lever-Switch |
| 3 | 114-1999 | 1 | Lever-Switch |
| 4 | 114-1956 | 2 | Control Fork ASM |
| 5 | 114-1955 | 2 | Hub-Shoulder |
| 6 | 114-3547 | 2 | Arm-Control |
| 7 | 321-15 | 2 | Screw-HH |
| 8 | 3256-22 | 8 | Washer-Flat |
| 9 | 65-8270 | 1 | Washer |
| 10 | 114-5155-03 | 1 | Arm-Switch, Stop |
| 11 | 32128-14 | 2 | Nut-Hex, Flange |
| 12 | 114-5295 | 2 | Rod-Link, Shifter |
| 13 | 3290-307 | 6 | Pin-Hair |
| 14 | 322-4 | 4 | Screw-HH |
| 15 | 3296-29 | 4 | Nut-Lock, NI |
| 16 | 114-3534 | 4 | Roller |
| 17 | 114-1912-03 | 1 | Bracket-Shifter |
| 18 | 106-7297 | 1 | Clamp-Cable |
| 19 | 49-2040 | 1 | Screw-HWHTF |
| 20 | 32144-70 | 5 | Screw-HWHTF |
| 21 | 3256-23 | 2 | Washer-Flat |
| 22 | 106-2584 | 1 | Spring-Torsion |
| 23 | 114-1978 | 1 | Pin-Hinge |
| 24 | 114-5347 | 1 | Arm-Dual, Shifter |

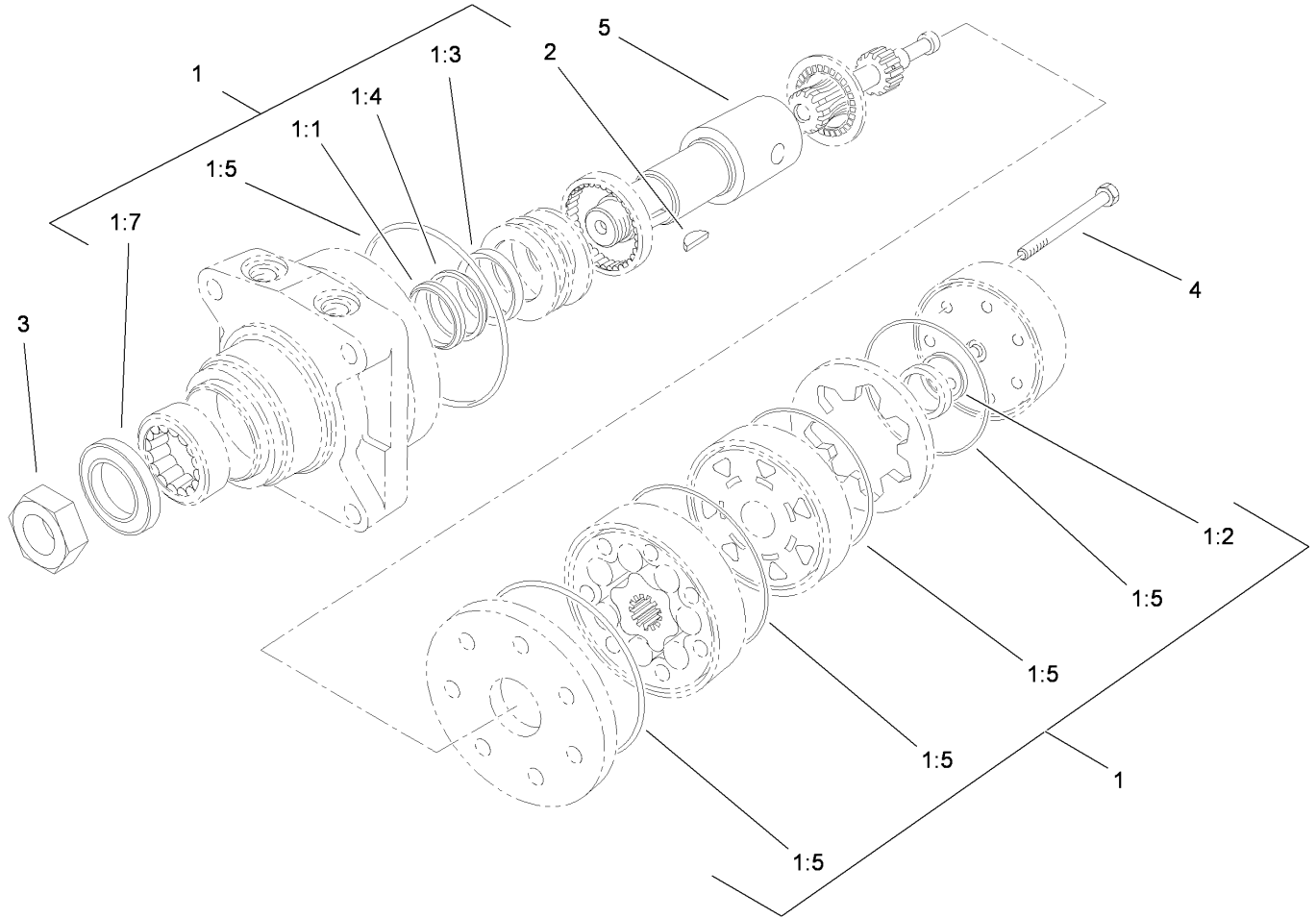
| Ref | Part No. | Qty. | Description |
|-----|----------|------|-------------------------|
| 25 | 2411-38 | 2 | Joint-Ball |
| 26 | 3296-27 | 2 | Nut-Lock, NI |
| 27 | 114-0433 | 1 | Clip-Spring |
| 28 | 117-0474 | 2 | Cable-Control, Traction |
| 29 | 1-633181 | 1 | Plate-Tapped |
| 30 | 32105-13 | 2 | Screw-HWH |
| 31 | 3290-378 | 1 | Tie-Cable |
| 32 | 114-3576 | 2 | Bushing-Guide, Drill |



Hydraulic Assembly

| Ref | Part No. | Qty. | Description |
|--------|-------------|------|----------------------|
| 1 | 105-0800 | 2 | Wheel Hub / Stud ASM |
| 1:2 | 10-6830 | 4 | Stud-Type, Drive |
| 2 | 114-0549 | 2 | Motor-Wheel |
| 3 | 3257-8 | 2 | Key-Woodruff |
| 4 | 85-7310 | 2 | Nut-Motor, Wheel |
| 5 | 325-8 | 8 | Screw-HH |
| 6 | 117-3572-01 | 1 | LH Motor Mount ASM |
| 7 | 117-3571-01 | 1 | RH Motor Mount ASM |
| 8 | 114-5168-01 | 1 | Mount-Motor, Center |
| 9 | 114-5166-01 | 1 | Base-Engine |
| 10 | 3232-3 | 4 | Screw-CARR |
| 11 | 3296-48 | 4 | Nut-Lock, NI |
| 12 | 3256-25 | 4 | Washer-Flat |
| 13 | 117-3597 | 2 | Pump-Hydraulic |
| 15 | 3231-22 | 4 | Screw-CARR |
| 16 | 3290-357 | 9 | Nut-HHF, Whiz |
| 17 | 114-5345-01 | 2 | Plate-Lift |
| 18 | 92-1624 | 5 | Screw-HWH |
| 20 | 107-8433 | 1 | HYD Reservoir ASM |
| ●20:1 | | 1 | Reservoir-HYD |
| 20:1:1 | 103-1948 | 1 | Cap-Reservoir, HYD |
| 20:1:2 | 103-1949 | 1 | Gasket-Cap |
| 20:2 | 115-4212 | 1 | Decal-Warning |
| 21 | 321-4 | 4 | Screw-HH |

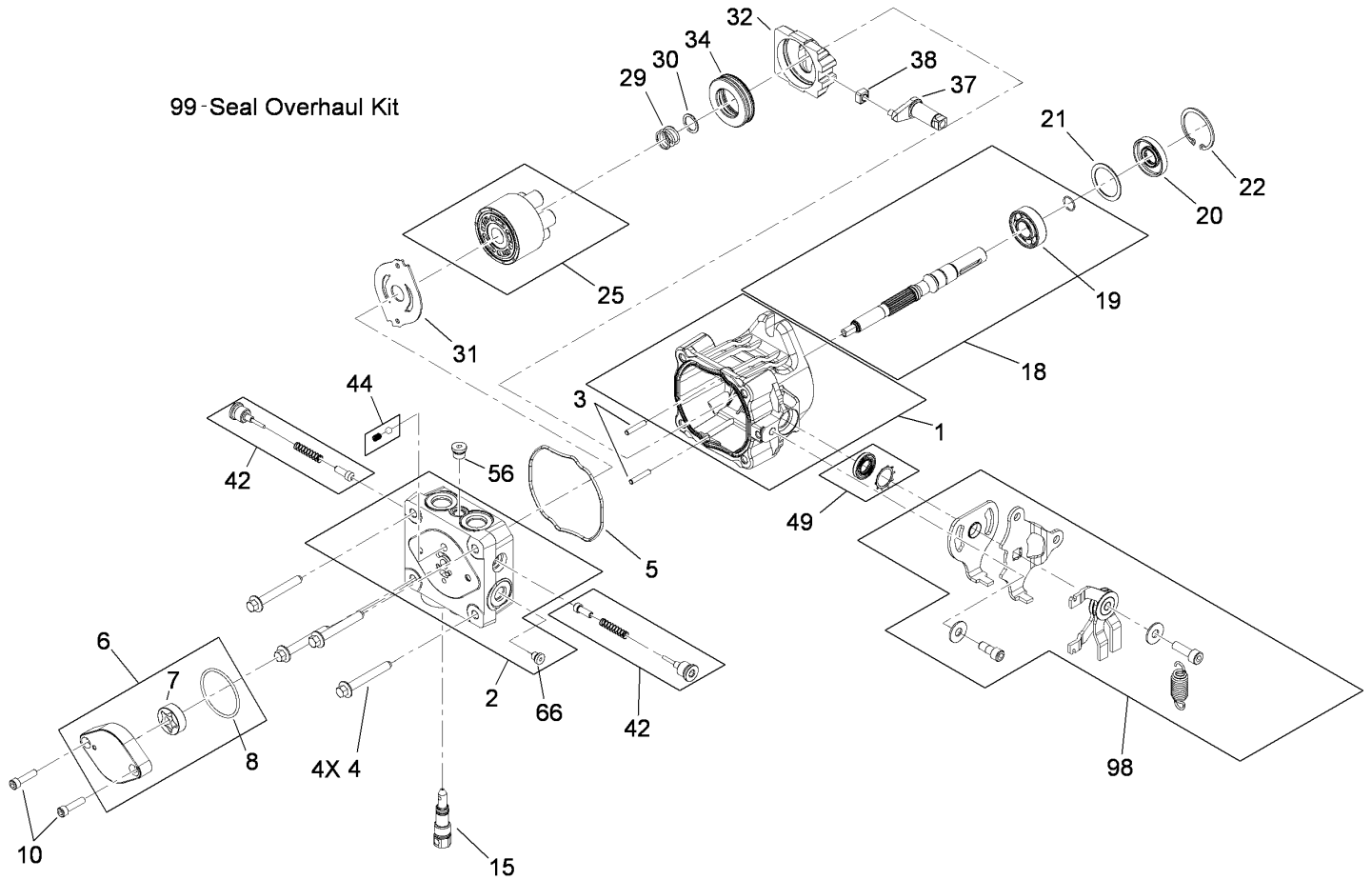
| Ref | Part No. | Qty. | Description |
|------|----------|------|---------------------|
| 22 | 32128-33 | 2 | Nut-HF |
| 23 | 104-7836 | 1 | Head-Filter |
| 24 | 1-633750 | 1 | Filter-Oil, HYD |
| 26 | 3256-22 | 2 | Washer-Flat |
| 27 | 340-89 | 4 | Fitting-HYD, 45 DEG |
| 27:1 | 237-30 | 1 | O-Ring |
| 27:2 | 237-80 | 1 | O-Ring |
| 28 | 340-101 | 4 | Fitting-HYD, 45 DEG |
| 28:1 | 237-30 | 1 | O-Ring |
| 28:2 | 237-79 | 1 | O-Ring |
| 29 | 100-4887 | 5 | Fitting-Barb |
| 29:1 | 237-42 | 1 | O-Ring |
| 30 | 103-1807 | 3 | Elbow-45 DEG |
| 30:1 | 237-42 | 1 | O-Ring |
| 32 | 103-1988 | 2 | Clamp-Hose |
| 33 | 117-0442 | 2 | HYD Hose ASM |
| 34 | 117-0449 | 2 | HYD Hose ASM |
| 36 | 117-0459 | 1 | Hose-Hydraulic |
| 37 | 117-3569 | 1 | Filter Hose ASM |
| 37:1 | 117-0460 | 1 | Hose-Hydraulic |
| 37:2 | 117-0458 | 2 | Hose-Hydraulic |
| 37:3 | 1-603721 | 2 | Fitting-Tee, Hose |
| 37:4 | 103-1988 | 6 | Clamp-Hose |
| 38 | 117-3570 | 1 | Tank Hose ASM |



Hydraulic Motor Assembly No. 114-0549

| Ref | Part No. | Qty. | Description |
|-------|----------|------|-----------------------|
| 1 | 1-000119 | 1 | Seal Kit |
| ● 1:1 | | 1 | Ring-Back Up |
| ● 1:2 | | 1 | Seal-Commutator |
| ● 1:3 | | 1 | Seal-Shaft (Viton) |
| ● 1:4 | | 1 | Washer-Back Up, Steel |
| ● 1:5 | | 5 | Ring-Seal (Viton) |
| ● 1:7 | | 1 | Seal-Dirt And Water |
| 2 | 3257-8 | 1 | Key-Woodruff |
| 3 | 85-7310 | 1 | Nut-Motor, Wheel |
| 4 | 106-5549 | 6 | Bolt-Special |
| 5 | 106-8764 | 1 | Shaft-Coupling |

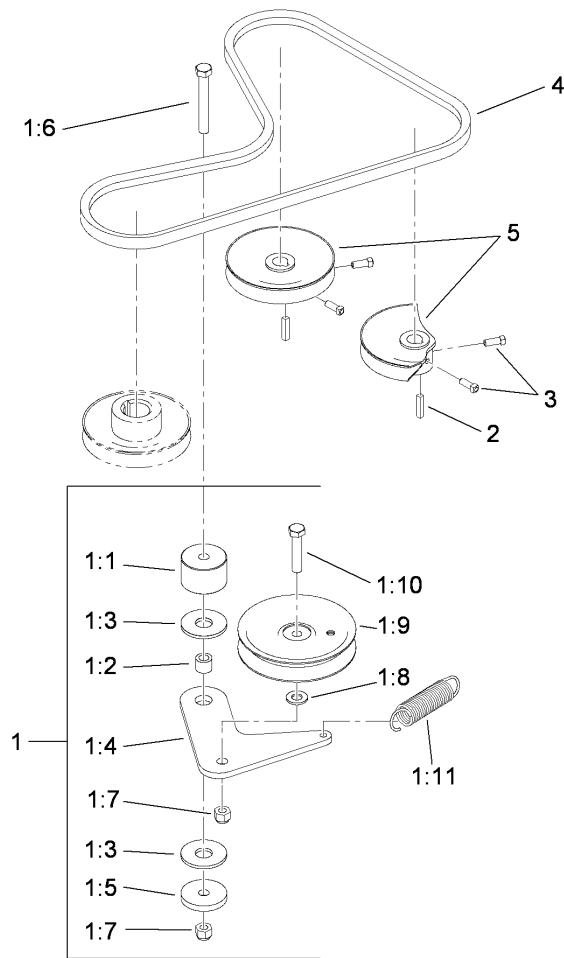
| | | | |
|--|--|--|--|
| | | | |
| | | | |
| | | | |
| | | | |
| | | | |



Hydraulic Pump Assembly No. 117-3597

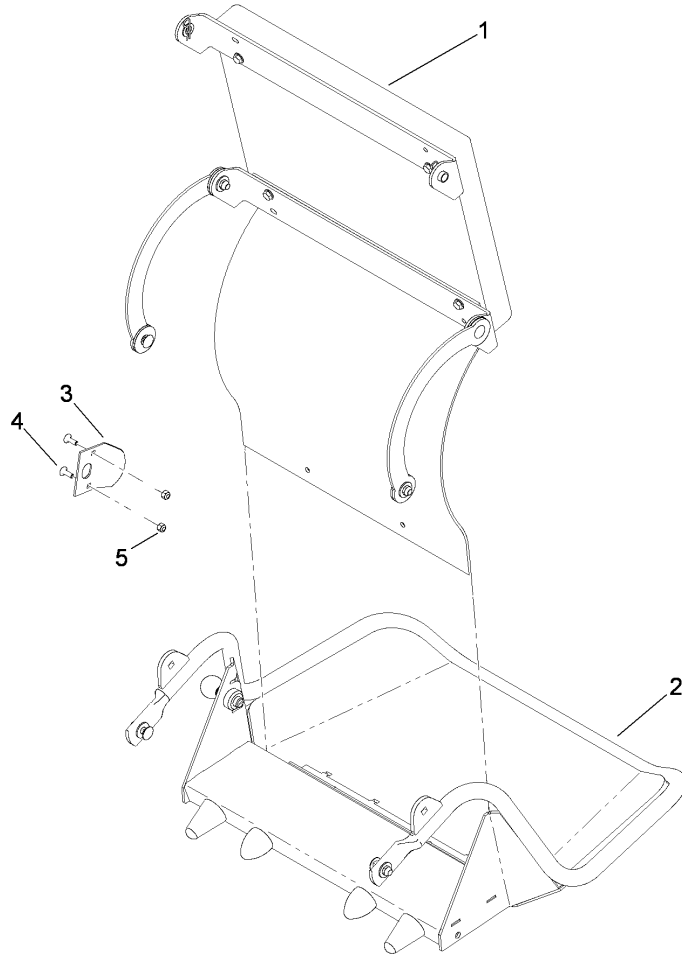
| Ref | Part No. | Qty. | Description |
|-----|----------|------|------------------------------|
| 1 | 115-4464 | 1 | Housing Kit |
| 2 | 106-8752 | 1 | End Cap Kit (W/Poppets) |
| 3 | 106-8753 | 2 | Pin-Headless, Straight |
| 4 | 106-8754 | 4 | Bolt-HF |
| 5 | 106-8755 | 1 | O-Ring |
| 6 | 106-8756 | 1 | Charge Pump Kit |
| 7 | 104-2122 | 1 | Gerotor ASM |
| 8 | 106-8757 | 1 | O-Ring |
| 10 | 104-2111 | 2 | Capscrew |
| 15 | 106-8759 | 1 | Bypass Valve Kit |
| 18 | 103-2664 | 1 | Input Shaft Kit |
| 19 | 104-5311 | 1 | Bearing-Ball |
| 20 | 104-5310 | 1 | Seal-Lip |
| 21 | 104-5308 | 1 | Spacer |
| 22 | 104-5309 | 1 | Ring-Retaining |
| 25 | 103-2666 | 1 | Cylinder Block Kit |
| 29 | 94-1936 | 1 | Spring-Block |
| 30 | 94-1937 | 1 | Washer-Thrust, Block |
| 31 | 105-6185 | 1 | Plate-Valve |
| 32 | 94-1907 | 1 | Swashplate-Variable |
| 34 | 94-6922 | 1 | Bearing-Thrust |
| 37 | 115-4458 | 1 | Arm-Trunnion, Tapered Square |
| 38 | 94-1910 | 1 | Guide-Slot |
| 42 | 98-3252 | 2 | Valve-Check (W/Poppet) |

| Ref | Part No. | Qty. | Description |
|-----|----------|------|-------------------------|
| 44 | 106-8760 | 1 | Charge Relief Valve Kit |
| 49 | 114-8155 | 1 | Trunnion Seal Kit |
| 56 | 106-8762 | 1 | Plug-HSH |
| 66 | 106-8763 | 1 | Plug-HSH |
| 98 | 117-3629 | 1 | Kit-Return |
| 99 | 105-6184 | 1 | Seal Overhaul Kit |



Hydraulic Belt Drive Assembly

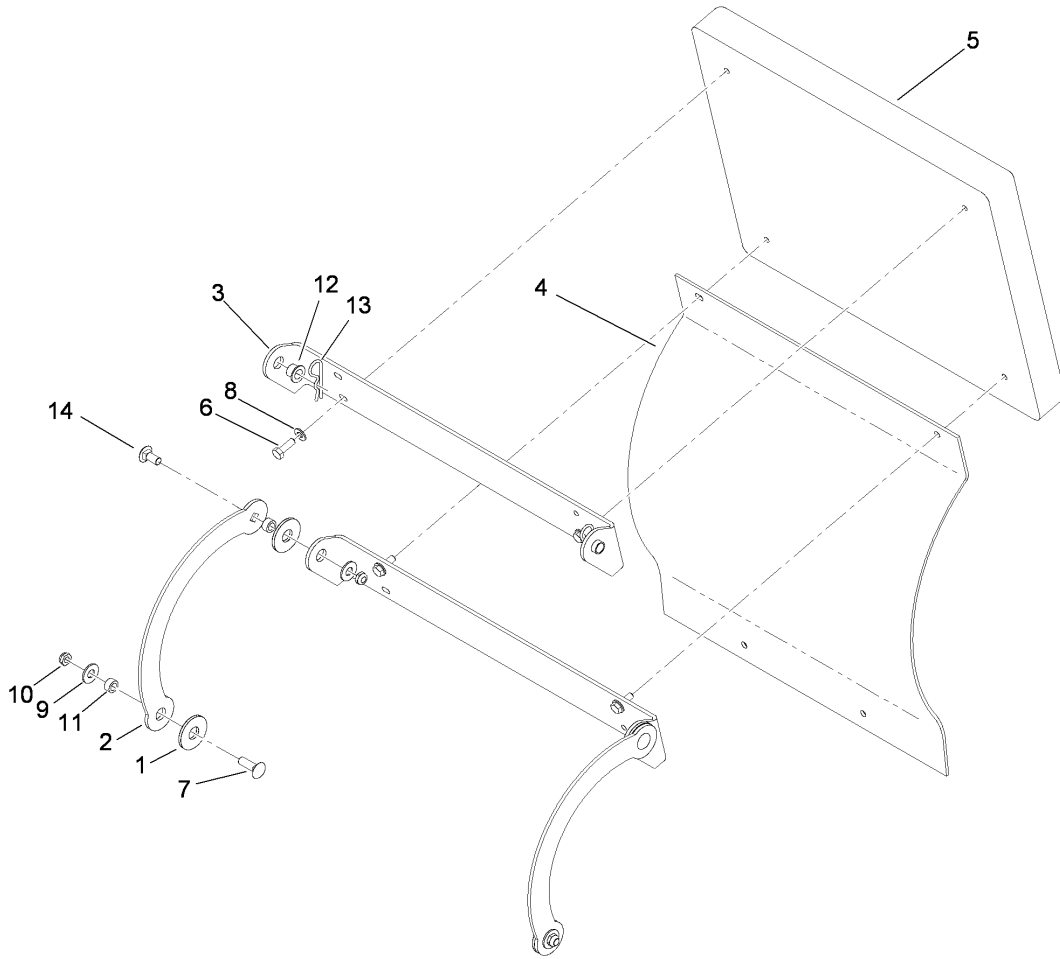
| Ref | Part No. | Qty. | Description |
|------|----------|------|----------------------------|
| 1 | | 1 | Pump Idler Assembly |
| 1:1 | 117-3568 | 1 | Hub-Idler |
| 1:2 | 1-413088 | 1 | Bushing-Lever, Lift |
| 1:3 | 114-0463 | 2 | Washer-Friction, Composite |
| 1:4 | 117-3622 | 1 | Plate-Idler |
| 1:5 | 110-9981 | 1 | Washer-Plain |
| 1:6 | 323-13 | 1 | Screw-HH |
| 1:7 | 3296-39 | 2 | Nut-Lock, NI |
| 1:8 | 3256-24 | 1 | Washer-Flat |
| 1:9 | 93-1622 | 1 | Pulley-Idler |
| 1:10 | 323-9 | 1 | Screw-HH |
| 1:11 | 108-4056 | 1 | Spring-Extension |
| 2 | 1-807272 | 2 | Key |
| 3 | 3241-5 | 4 | Screw-Set |
| 4 | 114567 | 1 | Belt-V Lower PTO |
| 5 | 105-5648 | 2 | Pulley-Pump |



Platform Assembly

| Ref | Part No. | Qty. | Description |
|-----|----------|------|--------------|
| 1 | 114-1917 | 1 | Cushion ASM |
| 2 | 117-9640 | 1 | Platform ASM |
| 3 | 114-1924 | 1 | Plate-Strike |
| 4 | 1-807512 | 2 | Bolt-CARR |
| 5 | 3296-42 | 2 | Nut-Lock, NI |

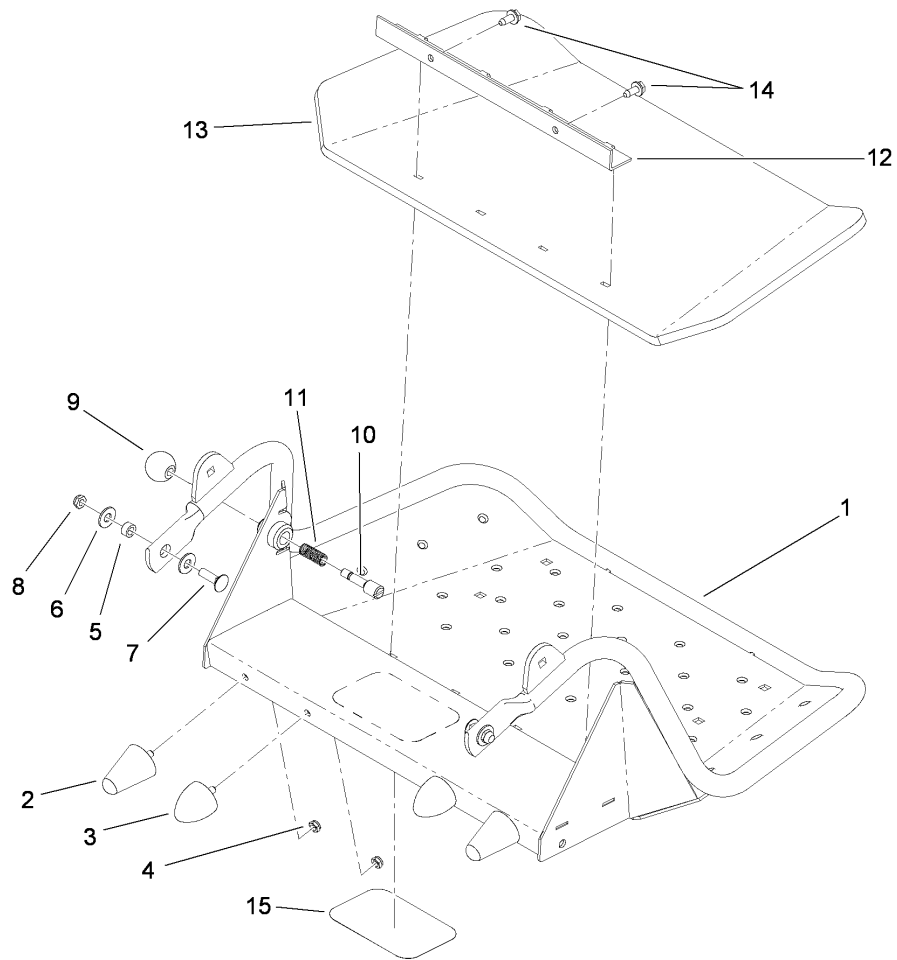
| | | | |
|--|--|--|--|
| | | | |
|--|--|--|--|



Cushion Assembly No. 114-1917

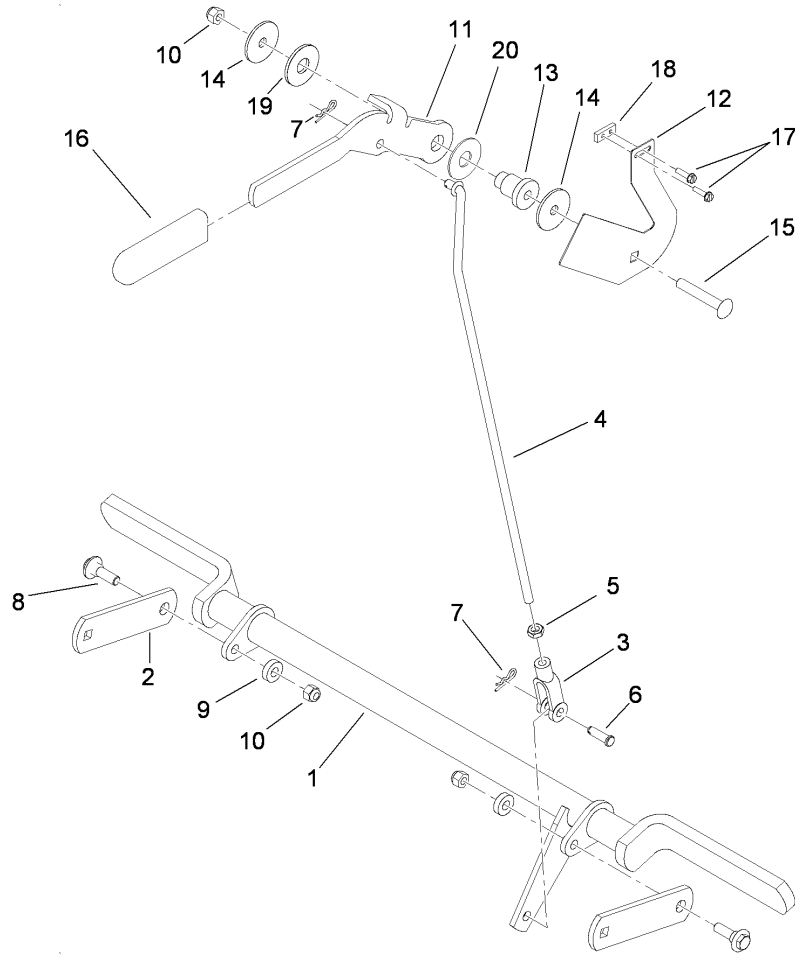
| Ref | Part No. | Qty. | Description |
|-----|-------------|------|----------------------------|
| 1 | 114-0463 | 4 | Washer-Friction, Composite |
| 2 | 114-1915-01 | 2 | Link-Pad |
| 3 | 114-1918-03 | 2 | Hinge-Pad |
| 4 | 114-1919 | 1 | Shield-Rear |
| 5 | 114-5314 | 1 | Cushion-Pad |
| 6 | 322-5 | 4 | Screw-HH |
| 7 | 3231-2 | 2 | Screw-CARR |
| 8 | 3256-23 | 4 | Washer-Flat |
| 9 | 3256-4 | 8 | Washer-Flat |
| 10 | 3296-59 | 4 | Nut-Lock, NI |
| 11 | 111044 | 4 | Spacer |
| 12 | 93-2891 | 2 | Bushing-Plastic |
| 13 | 3290-355 | 2 | Pin-Hair |
| 14 | 3231-27 | 2 | Screw-CARR |

| | | | |
|--|--|--|--|
| | | | |
|--|--|--|--|



Platform Assembly No. 117-9640

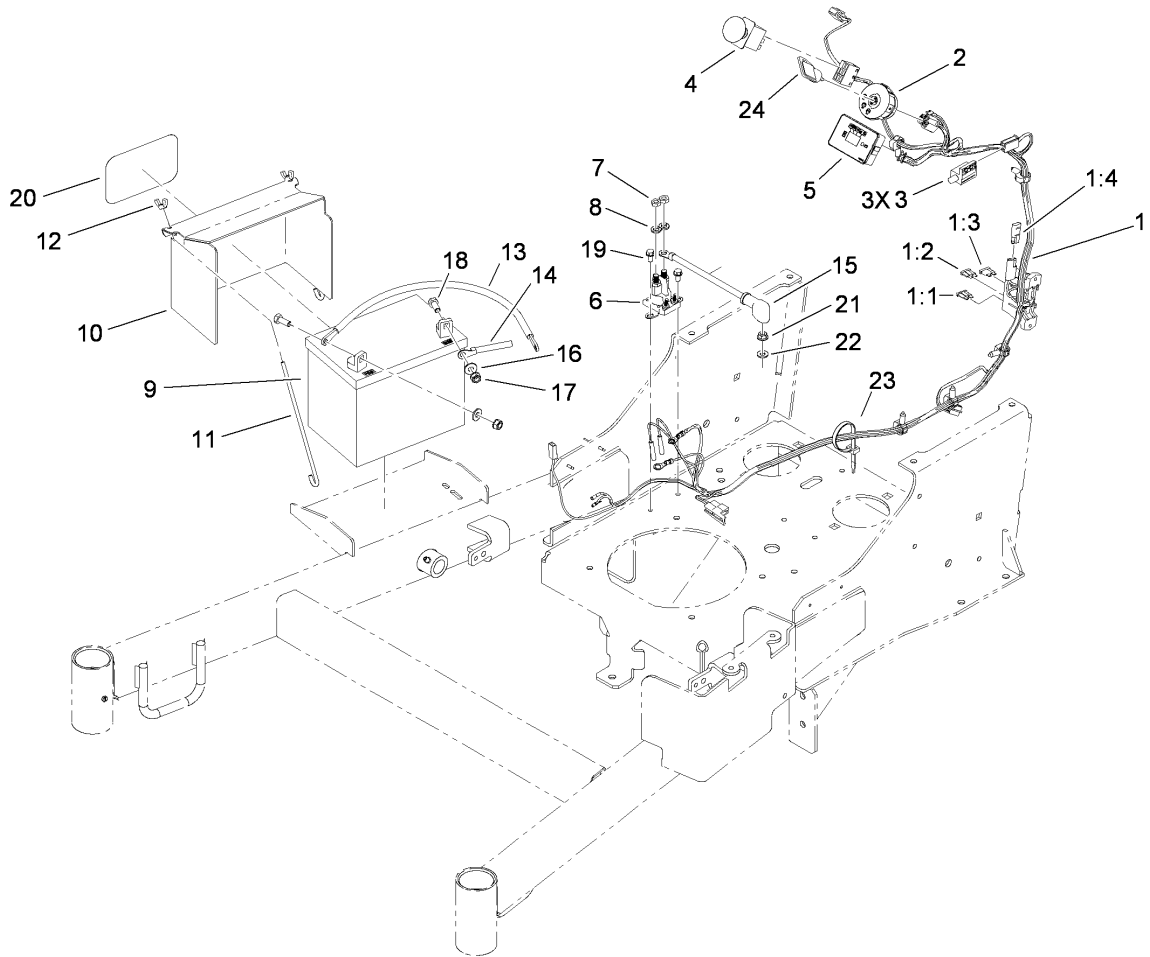
| Ref | Part No. | Qty. | Description | | | | |
|-----|-------------|------|---------------|--|--|--|--|
| 1 | 117-9641-01 | 1 | Platform ASM | | | | |
| 2 | 114-1925 | 2 | Bumper-Rubber | | | | |
| 3 | 114-1926 | 2 | Bumper-Rubber | | | | |
| 4 | 3296-47 | 4 | Nut-Lock, NI | | | | |
| 5 | 111044 | 2 | Spacer | | | | |
| 6 | 3256-4 | 4 | Washer-Flat | | | | |
| 7 | 3231-25 | 2 | Screw-CARR | | | | |
| 8 | 3296-59 | 2 | Nut-Lock, NI | | | | |
| 9 | 1-603175 | 1 | Knob-Ball | | | | |
| 10 | 114-5288 | 1 | Pin-Latch | | | | |
| 11 | 114-5348 | 1 | Spring | | | | |
| 12 | 114-1920-03 | 1 | Clamp-Shield | | | | |
| 13 | 114-5349 | 1 | Mat-Foot | | | | |
| 14 | 32144-70 | 2 | Screw-HWHTF | | | | |
| 15 | 68-3640 | 1 | Decal | | | | |



Parking Brake Assembly

| Ref | Part No. | Qty. | Description |
|-----|-------------|------|----------------------------|
| 1 | 114-5187-03 | 1 | Brake ASM |
| 2 | 114-5186-01 | 2 | Support-Brake |
| 3 | 1-633131 | 1 | Yoke-Linkage, Brake |
| 4 | 114-5196 | 1 | Rod-Brake |
| 5 | 3220-3 | 1 | Nut-HJ |
| 6 | 283-2 | 1 | Pin-Clevis |
| 7 | 3290-307 | 2 | Pin-Hair |
| 8 | 614672 | 2 | Bolt-Shoulder |
| 9 | 5-0652 | 2 | Spacer |
| 10 | 3296-39 | 3 | Nut-Lock, NI |
| 11 | 117-5759-03 | 1 | Lever-Brake |
| 12 | 117-0452-03 | 1 | Plate-Switch, Brake |
| 13 | 106-3214 | 1 | Mount-Pulley |
| 14 | 63-7400 | 2 | Washer-Rebound |
| 15 | 3231-44 | 1 | Screw-CARR |
| 16 | 1-633268 | 1 | Grip-Lever, Brake |
| 17 | 32105-13 | 2 | Screw-HWH |
| 18 | 1-633181 | 1 | Plate-Tapped |
| 19 | 114-0463 | 1 | Washer-Friction, Composite |
| 20 | 3256-7 | 1 | Washer-Flat |

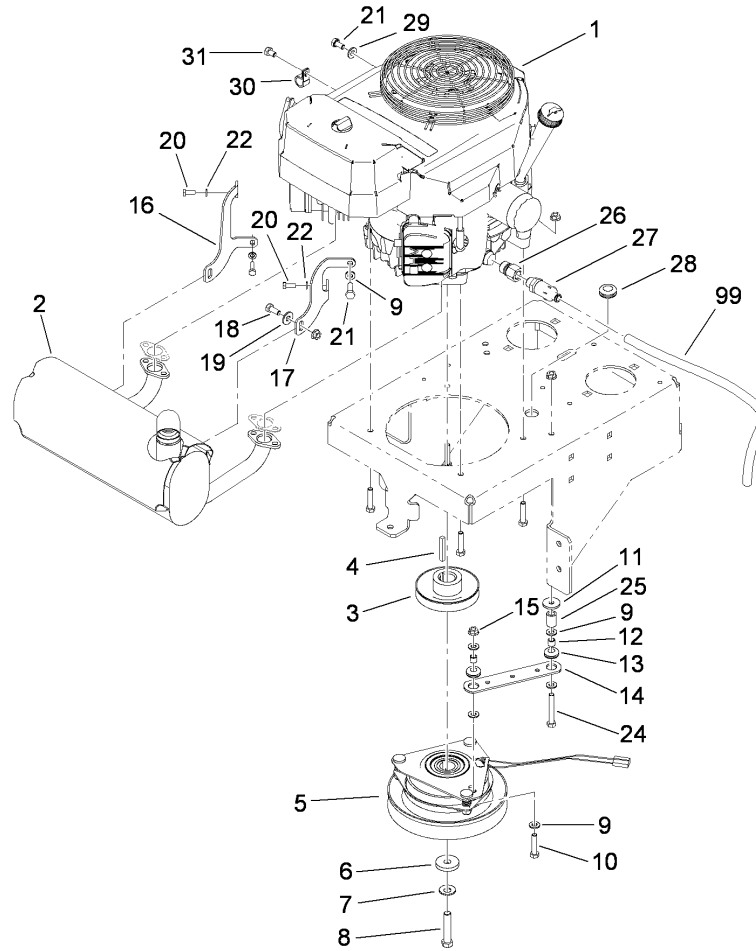
| | | | |
|--|--|--|--|
| | | | |
| | | | |
| | | | |
| | | | |



Electrical Assembly

| Ref | Part No. | Qty. | Description |
|-----|-------------|------|-------------------------|
| 1 | 114-3536 | 1 | Harness-Wire |
| 1:1 | 109103 | 1 | Fuse-30 Amp |
| 1:2 | 109102 | 1 | Fuse-25 Amp |
| 1:3 | 218-578 | 1 | Fuse-10 Amp |
| 1:4 | 116-0053 | 1 | Cap-Plug |
| 2 | 110-6764 | 1 | Switch-Ignition |
| 3 | 1-513152 | 3 | Switch-Closed, Normally |
| 4 | 114-0279 | 1 | Switch-PTO |
| 5 | 115-4180 | 1 | Module-Meter, Hour |
| 6 | 117-1197 | 1 | Solenoid |
| 7 | 3220-2 | 2 | Nut-Jam |
| 8 | 3253-4 | 2 | Washer-Lock |
| 9 | 104-2491 | 1 | Battery |
| 10 | 117-0543-01 | 1 | Cover-Battery |
| 11 | 1-633651 | 2 | Bolt-Holddown |
| 12 | 1-543792 | 2 | Wingnut |
| 13 | 114-9404 | 1 | Cable-Battery, Positive |
| 14 | 105-0836 | 1 | Cable-Battery, Black |
| 15 | 106-8268 | 1 | Cable-Battery, Red |
| 16 | 3256-23 | 2 | Washer-Flat |
| 17 | 109-5715 | 2 | Nut-HHF, Smooth |
| 18 | 322-3 | 2 | Screw-HH |
| 19 | 32144-4 | 2 | Screw-HWH |
| 20 | 68-3640 | 1 | Decal |

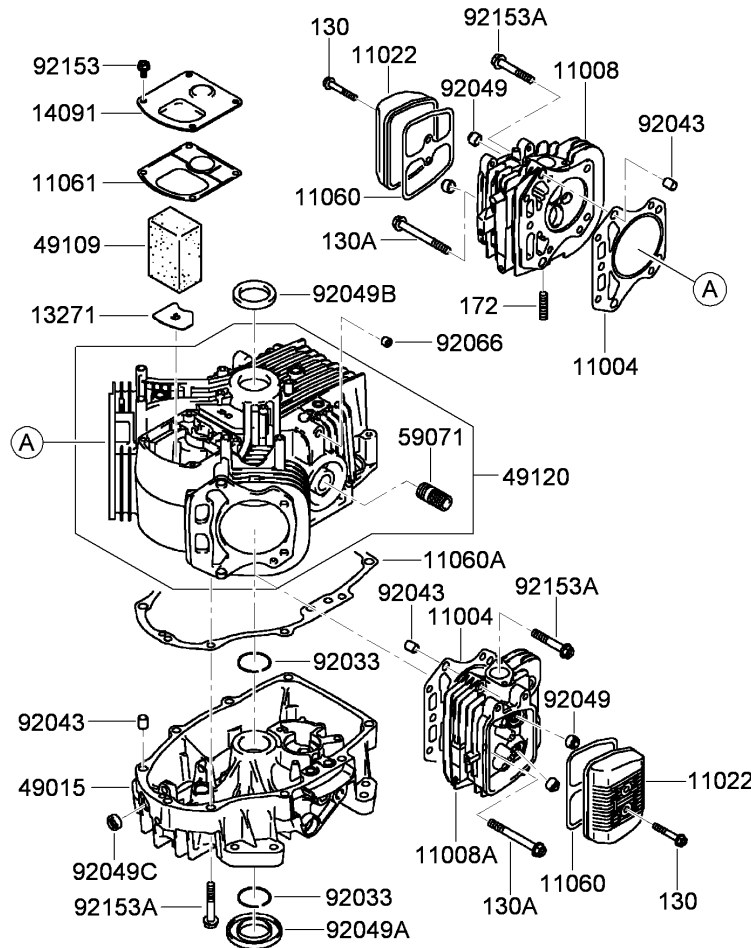
| Ref | Part No. | Qty. | Description |
|-----|----------|------|--------------|
| 21 | 3256-22 | 1 | Washer-Flat |
| 22 | 32128-33 | 1 | Nut-HF |
| 23 | 3290-378 | 1 | Tie-Cable |
| 24 | 63-8360 | 1 | Key-Ignition |



Engine Assembly

| Ref | Part No. | Qty. | Description |
|-----|-------------|------|------------------------------|
| 1 | 114-3590 | 1 | Engine-Kawasaki, FH580V-Fs30 |
| 2 | 117-0430 | 1 | Muffler-Engine |
| 3 | 112-7067 | 1 | Pulley |
| 4 | 608006 | 1 | Key-Square |
| 5 | 105-2635 | 1 | Clutch / Brake |
| 6 | 107-4136 | 1 | Washer |
| 7 | 1-603610 | 1 | Washer-Spring |
| 8 | 3212-9 | 1 | Screw-HH |
| 9 | 3256-23 | 6 | Washer-Flat |
| 10 | 322-7 | 5 | Screw-HH |
| 11 | 1-613235 | 1 | Washer |
| 12 | 1-633545 | 2 | Spacer |
| 13 | 1-633630 | 2 | Grommet-Brake |
| 14 | 1-633543-03 | 1 | Strap-Clutch, Brake |
| 15 | 32128-20 | 8 | Nut-HF |
| 16 | 109-3476-03 | 1 | Bracket-Muffler, LH |
| 17 | 109-3477-03 | 1 | Bracket-Muffler, RH |
| 18 | 322-3 | 2 | Screw-HH |
| 19 | 3256-3 | 2 | Washer-Flat |
| 20 | 33113-016 | 3 | Screw-HH |
| 21 | 33114-016 | 2 | Screw-HH |
| 22 | 3256-22 | 3 | Washer-Flat |
| 24 | 322-11 | 1 | Screw-HH |
| 25 | 104-6373 | 1 | Tube-Retainer |

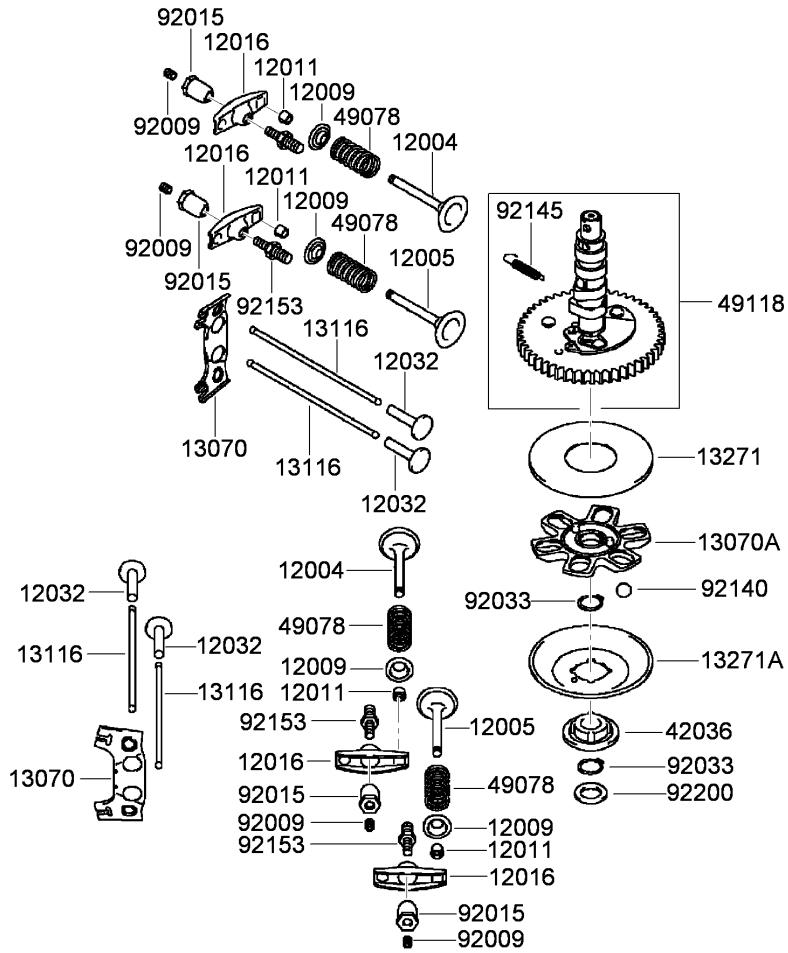
| Ref | Part No. | Qty. | Description |
|-----|----------|------|------------------|
| 26 | 103-1966 | 1 | Adapter |
| 27 | 92-6877 | 1 | Valve-Drain, Oil |
| 28 | 112-7069 | 1 | Grommet |
| 29 | 33094-00 | 1 | Washer-Plain |
| 30 | 2412-87 | 1 | Clamp-Cable |
| 31 | 46-8090 | 1 | Screw-Plastite |
| 99 | 103-1964 | 1 | Hose-Drain, Oil |



Cylinder and Crankcase Assembly Kawasaki FH580V-FS30

| Ref | Part No. | Qty. | Description |
|----------|------------|------|-------------------------------|
| ● 130 | 130AA0640 | 4 | Bolt-Flanged (6X40) |
| ● 130A | 130CA0875 | 2 | Bolt-Flanged (8X75) |
| ● 172 | 172BA0818 | 4 | Bolt-Stud (8X18) |
| ● 11004 | 11004-7016 | 2 | Gasket-Head |
| ● 11008 | 11008-6043 | 1 | Head-Cylinder, No. 1 |
| ● 11008A | 11008-7020 | 1 | Head-Cylinder, No. 2 |
| ● 11022 | 11022-7018 | 2 | Case-Rocker |
| ● 11060 | 11060-7001 | 2 | Gasket-Case, Rocker |
| ● 11060A | 11060-7008 | 1 | Gasket-Cover, Crankcase |
| ● 11061 | 11061-7001 | 1 | Gasket-Breather |
| ● 13271 | 13271-7016 | 1 | Plate |
| ● 14091 | 14091-7006 | 1 | Cover |
| ● 49015 | 49015-6253 | 1 | Cover-Crankcase |
| ● 49109 | 49109-7002 | 1 | Element-Breather |
| ● 49120 | 49120-7113 | 1 | Crankcase |
| ● 59071 | 59071-2079 | 1 | Joint |
| ● 92033 | 92033-7003 | 2 | Ring-Snap |
| ● 92043 | 92043-7001 | 6 | Pin |
| ● 92049 | 92049-7001 | 4 | Seal-Oil, R V C2 (6X11X10.2) |
| ● 92049A | 92049-7015 | 1 | Seal-Oil, S D (35X62X8 L HSH) |
| ● 92049B | 92049-7016 | 1 | Seal-Oil, S D (35X48X8 R HSH) |
| ● 92049C | 92049-7019 | 1 | Seal-Oil, S O (8X14X5 HSH) |
| ● 92066 | 92066-7026 | 1 | Plug |
| ● 92153 | 92153-7043 | 4 | Bolt (6X12) |

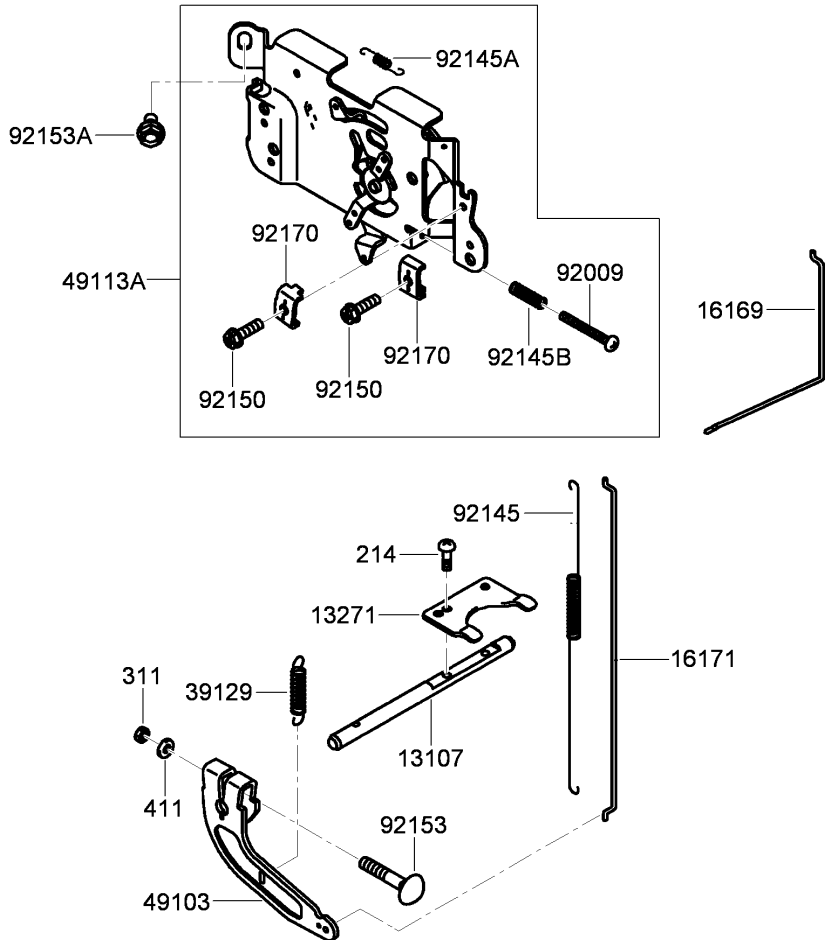
| Ref | Part No. | Qty. | Description |
|----------|------------|------|-------------|
| ● 92153A | 92153-7054 | 17 | Bolt (8X50) |



Valve and Camshaft Assembly Kawasaki FH580V-FS30

| Ref | Part No. | Qty. | Description |
|-----|-------------|------|------------------------|
| ② | 12004-7003 | 2 | Valve-Intake |
| ② | 12005-7003 | 2 | Valve-Exhaust |
| ④ | 12009-7001 | 4 | Retainer-Spring, Valve |
| ⑧ | 12011-2056 | 8 | Collet |
| ④ | 12016-7008 | 4 | Arm-Rocker |
| ④ | 12032-7001 | 4 | Tappet |
| ② | 13070-7001 | 2 | Guide |
| ① | 13070A-7004 | 1 | Guide |
| ④ | 13116-2057 | 4 | Rod-Push |
| ① | 13271-7007 | 1 | Plate |
| ① | 13271A-7021 | 1 | Plate-Governor |
| ① | 42036-7010 | 1 | Sleeve |
| ④ | 49078-7001 | 4 | Spring-Valve, Engine |
| ① | 49118-7004 | 1 | Camshaft |
| ④ | 92009-2341 | 4 | Screw |
| ④ | 92015-2253 | 4 | Nut |
| ② | 92033-7001 | 2 | Ring-Snap |
| ⑥ | 92140-7005 | 6 | Ball |
| ① | 92145-7001 | 1 | Spring |
| ④ | 92153-7019 | 4 | Bolt |
| ① | 92200-7001 | 1 | Washer |

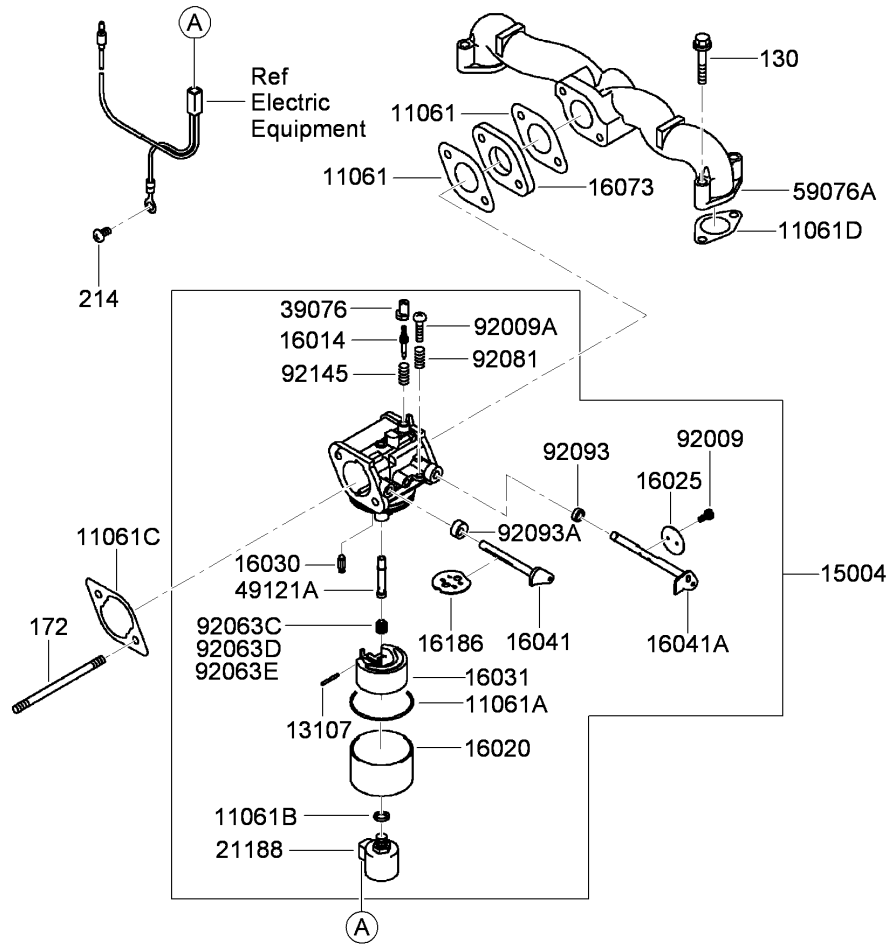
| | | | |
|--|--|--|--|
| | | | |
| | | | |
| | | | |
| | | | |



Control Equipment Assembly Kawasaki FH580V-FS30

| Ref | Part No. | Qty. | Description |
|-----|-----------|------|--------------------|
| 2 | 214AA0408 | 2 | Screw-Pan +-(4X8) |
| 1 | 311AA0600 | 1 | Nut-Hex (6Mm) |
| 1 | 411AA0600 | 1 | Washer-Plain (6Mm) |
| 1 | 13107 | 1 | Shaft |
| 1 | 13271 | 1 | Plate |
| 1 | 16169 | 1 | Link-Choke |
| 1 | 16171 | 1 | Link |
| 1 | 39129 | 1 | Spring-Governor |
| 1 | 49103 | 1 | Arm-Governor |
| 1 | 49113A | 1 | Panel-Comp-Control |
| 1 | 92009 | 1 | Screw (4X35) |
| 1 | 92145 | 1 | Spring |
| 1 | 92145A | 1 | Spring |
| 1 | 92145B | 1 | Spring |
| 2 | 92150 | 2 | Bolt (5X18) |
| 1 | 92153 | 1 | Bolt (6X35) |
| 2 | 92153A | 2 | Bolt (6X12) |
| 2 | 92170 | 2 | Clamp |

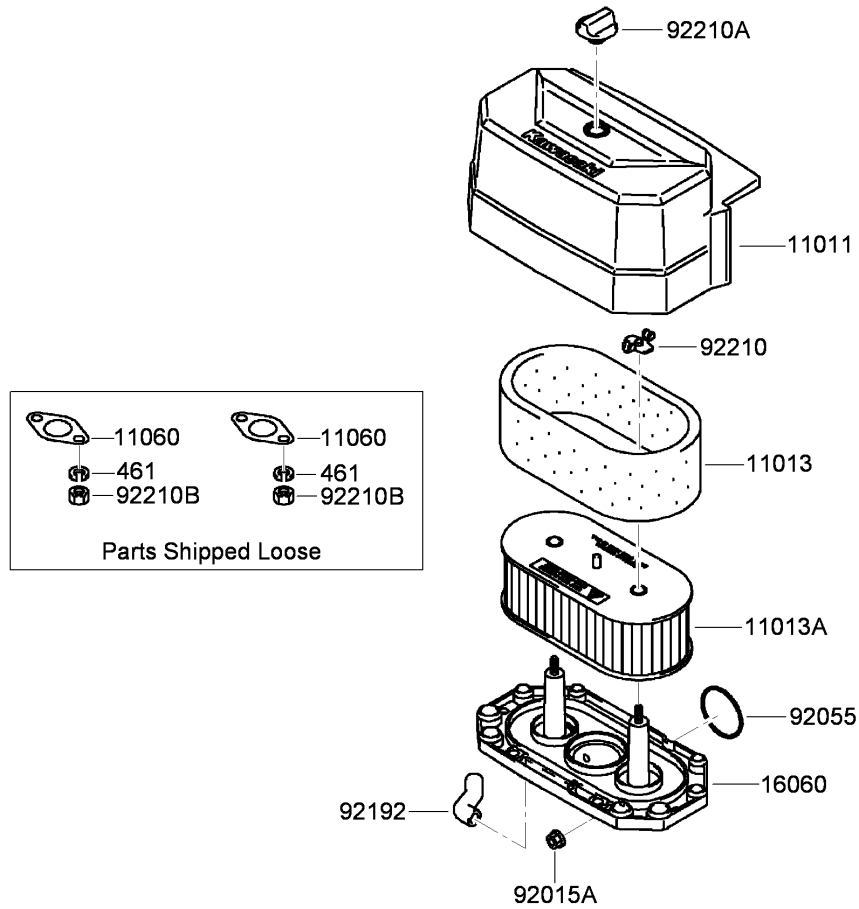
| | | | |
|--|--|--|--|
| | | | |
| | | | |
| | | | |
| | | | |



Carburetor Assembly Kawasaki FH580V-FS30

| Ref | Part No. | Qty. | Description |
|----------|------------|------|----------------------------|
| ● 130 | 130AA0635 | 4 | Bolt-Flanged (6X35) |
| ● 172 | 172BA0690 | 2 | Bolt-Stud (6X90) |
| ● 214 | 214AA0510 | 1 | Screw-Pan +- (5X10) |
| ● 11061 | 11061-7004 | 2 | Gasket-Insulator |
| ● 11061A | 11061-7009 | 1 | Gasket-Chamber |
| ● 11061B | 11061-7010 | 1 | Gasket-Screw |
| ● 11061C | 11061-7018 | 1 | Gasket-Cleaner, Air |
| ● 11061D | 11061-7019 | 2 | Gasket |
| ● 13107 | 13107-7018 | 1 | Shaft |
| ● 15004 | 15004-7060 | 1 | Carburetor ASM |
| ● 16014 | 16014-7005 | 1 | Screw-Air, Pilot |
| ● 16020 | 16020-7003 | 1 | Chamber-Float |
| ● 16025 | 16025-7006 | 1 | Valve-Throttle |
| ● 16030 | 16030-7003 | 1 | Valve-Float |
| ● 16031 | 16031-7002 | 1 | Float |
| ● 16041 | 16041-7016 | 1 | Shaft-Choke, Carburetor |
| ● 16041A | 16041-7018 | 1 | Shaft-Throttle, Carburetor |
| ● 16073 | 16073-7007 | 1 | Insulator |
| ● 16186 | 16186-7001 | 1 | Choke Valve ASM |
| ● 21188 | 21188-7002 | 1 | Solenoid |
| ● 39076 | 39076-7001 | 1 | Limiter |
| ● 49121A | 49121-7016 | 1 | Nozzle-Main |
| ● 59076A | 59076-7017 | 1 | Manifold-Intake |
| ● 92009 | 92009-2083 | 2 | Screw |

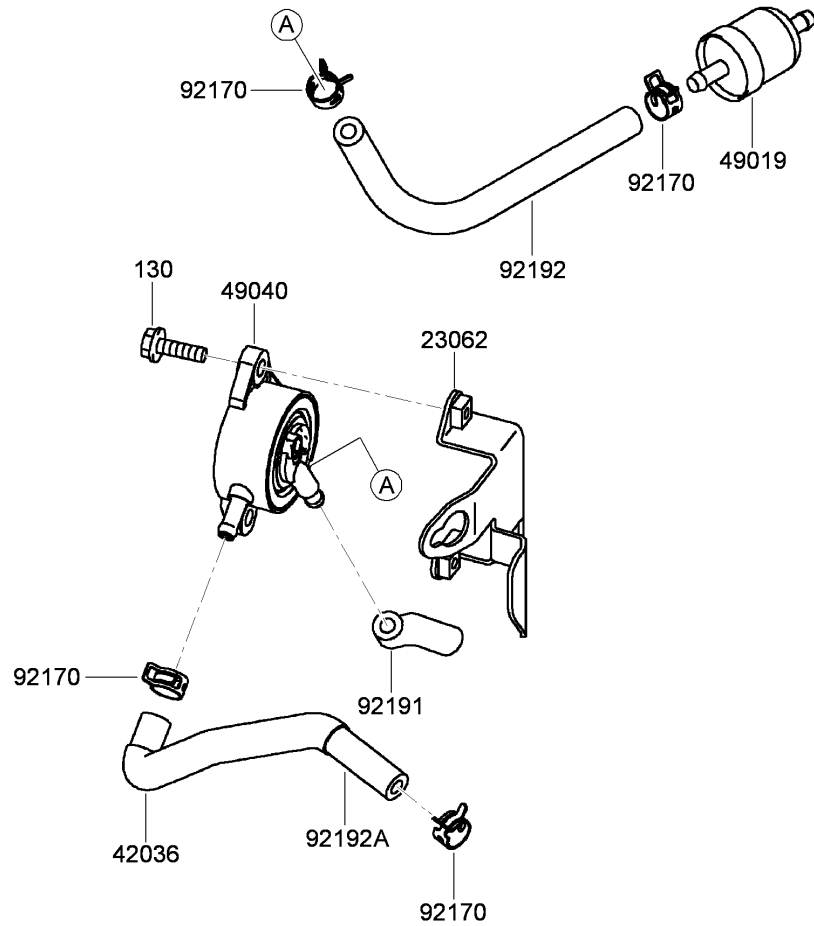
| Ref | Part No. | Qty. | Description |
|----------|------------|------|---------------------------|
| ● 92009A | 92009-2349 | 1 | Screw |
| ● 92063C | 92063-7066 | 1 | Jet-Main, No. 108 |
| ● 92063D | 92063-7090 | 1 | Jet-Main, No.106 (2380Ft) |
| ● 92063E | 92063-7091 | 1 | Jet-Main, No.104 (6560Ft) |
| ● 92081 | 92081-2234 | 1 | Spring |
| ● 92093 | 92093-2100 | 1 | Seal |
| ● 92093A | 92093-7003 | 1 | Seal |
| ● 92145 | 92145-7015 | 1 | Spring |



Air Filter and Muffler Assembly Kawasaki FH580V-FS30

| Ref | Part No. | Qty. | Description |
|---------|------------|------|---------------------|
| ②461 | 461DA0800 | 4 | Washer-Spring (8Mm) |
| ②11011 | 11011-7046 | 1 | Case-Filter, Air |
| ②11013 | 11013-7025 | 1 | Element-Filter, Air |
| ②11013A | 11013-7031 | 1 | Element-Filter, Air |
| ②11060 | 11060-7021 | 2 | Gasket-Muffler |
| ②16060 | 16060-7016 | 1 | Pipe-Intake |
| ②92015A | 92015-1367 | 2 | Nut |
| ②92055 | 92055-7015 | 1 | O-Ring |
| ②92192 | 92192-7010 | 1 | Tube |
| ②92210 | 92210-7004 | 2 | Nut (M6) |
| ②92210A | 92210-7019 | 1 | Nut |
| ②92210B | 92210-7027 | 4 | Nut (M8) |

| | | | |
|--|--|--|--|
| | | | |
|--|--|--|--|



Fuel Tank and Valve Assembly Kawasaki FH580V-FS30

| Ref | Part No. | Qty. | Description | | | | |
|----------|---------------|------|----------------------|--|--|--|--|
| ② 130 | 130AA0620 | 2 | Bolt-Flanged (6X20) | | | | |
| ② 23062 | 23062-7019-9H | 1 | Bracket | | | | |
| ② 42036 | 42036-7012 | 1 | Sleeve | | | | |
| ② 49019 | 49019-7001 | 1 | Filter-Fuel | | | | |
| ② 49040 | 49040-7001 | 1 | Pump-Fuel | | | | |
| ② 92170 | 92170-2009 | 4 | Clamp | | | | |
| ② 92191 | 92191-7002 | 1 | Tube | | | | |
| ② 92192 | 92192-7135 | 1 | Tube (6.35X12.7X160) | | | | |
| ② 92192A | 92192-7136 | 1 | Tube (6.35X12.7X180) | | | | |

Attachments and Accessories

For 74558 - GrandStand Mower, With 48in TURBO FORCE Cutting Unit

| Product Name | Model/Part |
|---|------------|
| Blade-Hi Flow, 16.5 Inch (6 Pack) | 110-0414 |
| Blade-Lo Flow, 16.5 Inch (6 Pack) | 110-0415 |
| Blade-Recycler, 16.5 Inch (6 Pack) | 110-0416 |
| Blade-Atomic, 16.5 Inch (6 Pack) | 110-0417 |
| Blade-Mid Flow, 16.5 Inch (6 Pack) | 110-0418 |
| Light Kit | 114-3505 |
| Trash Bag Kit | 117-0448 |
| Recycler Kit | 117-0540 |
| Operator-Controlled Discharge Chute Kit | 117-3600 |
| Weight Kit | 117-3620 |
| Soft Bag (3 Bushel) | 30104 |

NOTES

