



# Spark Arrestor Kit

## Kawasaki-Powered Walk-Behind Greensmaster Mowers

Model No. 117-1441

### Installation Instructions

## Installation

# 1

**For models with serial numbers prior to 269999999**

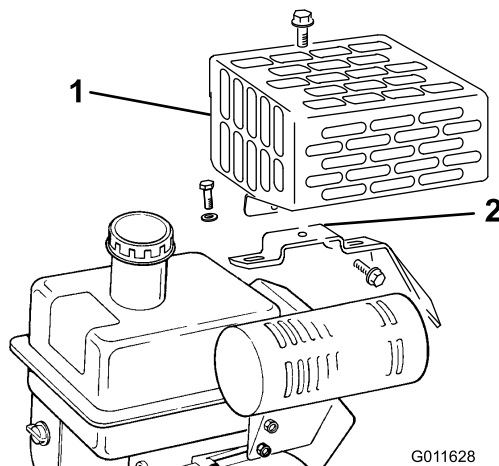
### No Parts Required

### Procedure

1. Remove the muffler guard from the muffler bracket(s) (Figure 1). Retain the fasteners.

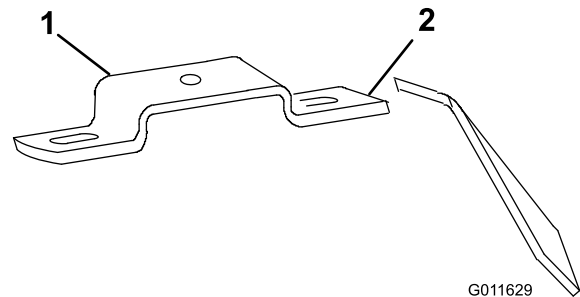
**Note:** Steps 2 thru 5 are not required unless the spark arrestor kit is being mounted on any Greensmaster 500 or a Greensmaster Flex 21 with a serial number prior to 220000001.

2. Remove the muffler bracket from the engine (Figure 1). Retain the fasteners.



**Figure 1**

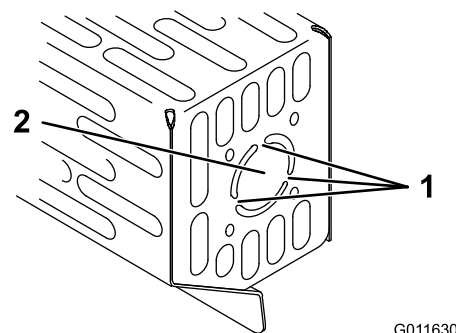
1. Muffler guard
2. Muffler bracket



**Figure 2**

1. Muffler mounting bracket
2. Cut off here

4. Remount the muffler bracket to the engine with the fasteners previously removed.
5. Cut the three connecting tabs allowing the removal of the knockout plug in the end of the muffler guard (Figure 3).

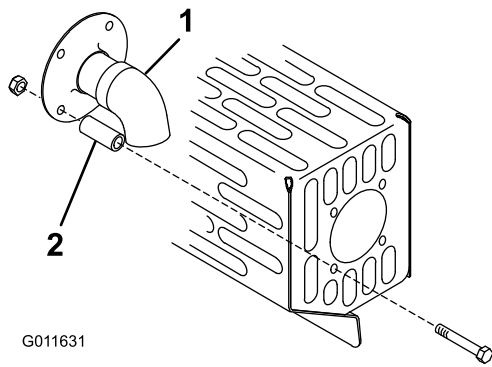


**Figure 3**

1. Connecting tabs
2. Knockout plug

6. Mount the spark arrestor to the muffler guard with (4) #10-24 x 1-1/4 inch hex-head screws, spacer tubes and locknuts (Figure 4). Assemble the spark arrestor with the exhaust pipe directed downward at a 45 degree angle and away from engine.

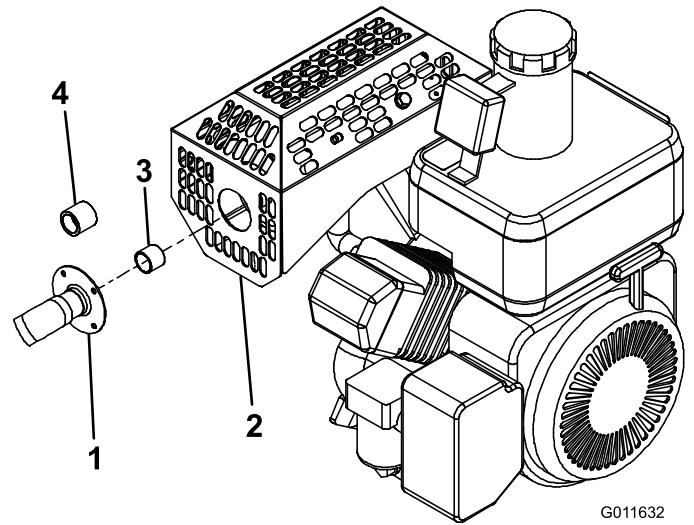
3. Cut off the deflector end of the mounting bracket at the bend as shown in Figure 2.



G011631

**Figure 4**

1. Spark arrester                      2. Spacer



G011632

**Figure 5**

1. Spark arrester                      3. Short spacer (standard)  
2. Muffler guard                      4. Long spacer (CARB)

7. Loosely mount the muffler guard and the spark arrester to the muffler bracket with the fasteners previously removed.
8. Position the assembly to eliminate any gap between the muffler exhaust pipe and the spark arrester. Then, tighten the fasteners.

# 2

## For models with serial numbers 270000000 and up

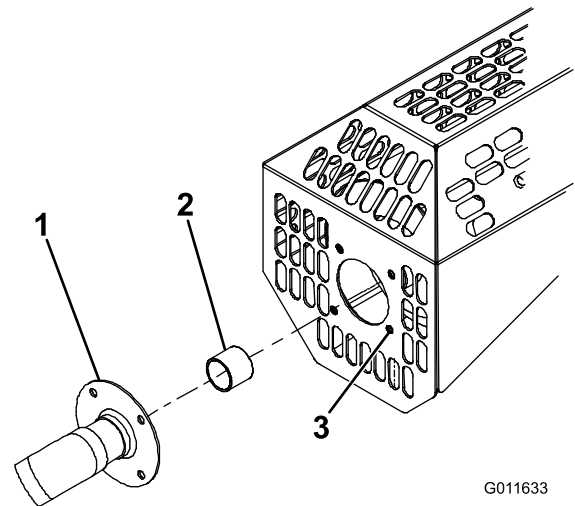
### No Parts Required

#### Procedure

1. Insert a spacer onto the muffler exhaust tube (Figure 5).

**Note:** The short tube is to be used on standard engines and the long tube is for CARB certified engines.

2. If the muffler guard does not have mounting holes for the spark arrester, proceed to next step. Otherwise proceed to step 6.
  - Insert the spark arrester onto the spacer with the exhaust pipe directed downward at a 45 degree angle and away from engine (Figure 6).



G011633

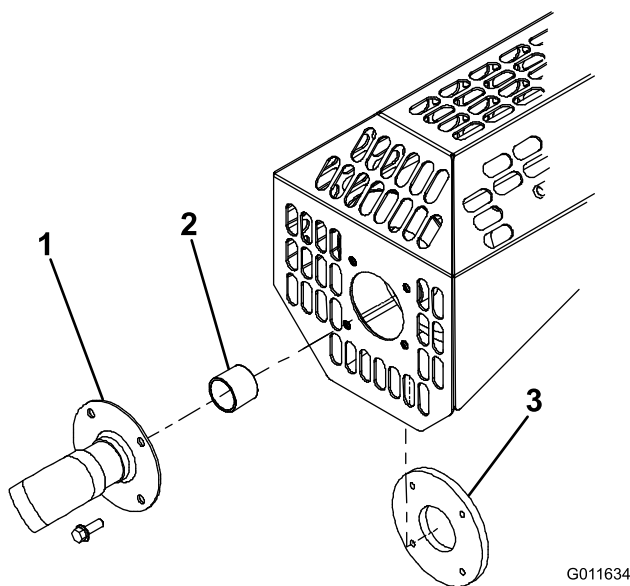
**Figure 6**

1. Spark arrester                      3. Mounting hole (4)  
2. Spacer

- Using the spark arrester as a template, locate, mark and drill (4) 3/16 inch diameter holes in the muffler guard.
  - Remove the spark arrester and spacer from the muffler.
3. Inside the muffler guard, insert the mounting plate onto the spacer while inserting the spacer onto the muffler exhaust tube (Figure 7).

# Maintenance

Periodically remove the spark arrestor and examine the screen. If the screen becomes plugged, clean the screen thoroughly.



**Figure 7**

1. Spark arrestor
2. Spacer
3. Mounting plate

- 
4. Insert the spark arrestor onto the spacer. Make sure the exhaust pipe is directed downward at a 45 degree angle and away from engine (Figure 7).
  5. Loosely mount the spark arrestor to the mounting plate with (4) #10-24 x 3/8 inch hex-head screws (Figure 7).
  6. Position the assembly to eliminate any gap between the muffler exhaust pipe and the spark arrestor. Then, tighten the fasteners.



**Count on it.**