



LX427 Lawn Tractor

Model No. 13AX61RG848 - 1 and up.

Parts Catalog

Ordering Replacement Parts

To order replacement parts, please supply the part number, the quantity, and the description of each part desired.

Understanding Reference Numbers

Each identified part in an illustration has a reference number. The reference number for a part also appears in the parts list, along with other information about the part.

This catalog uses two special reference number formats, one to indicate parts in a service assembly and another to indicate the quantity of a given part in an illustration.

Service Assembly Reference Numbers

Parts in service assemblies have reference numbers in the form a:b. The a represents the reference number of the entire service assembly and the b represents a sequential number unique to each part within the service assembly.

For example, a wheel assembly might be identified by reference number 6, the tire by 6:1, the valve by 6:2, and the wheel by 6:3. When you order the assembly identified by reference number 6, you receive all parts identified by reference numbers 6:1, 6:2, and 6:3. However, you may also order any part individually. Reference numbers of this type appear in illustrations and in part lists.

Reference Numbers Indicating Quantity

In an illustration, if a reference number indicates more than one part, the reference number has the form nX y. The n represents the quantity of the part, the X is the multiplication symbol, and the y represents the reference number.

For example, in an illustration, the reference number 2X 37 means that two of the parts identified by reference number 37 are indicated.

Contents

Description	Page	Description	Page
Front and Rear Wheel Assembly 3	Transmission, Belt and Control Pedal Assembly. 12
Steering and Front Axle Assembly 4	Transmission Assembly No. 112-6019 14
Frame, Battery and Manual PTO Assembly 6	42 Inch Deck Spindle and Belt Drive Assembly 16
Seat, Fender and Deck Lift Assembly 8	Muffler and Shield Assembly 18
Fuel Tank, Hood and Dash Assembly 10	Attachments and Accessories List 19

Part Description Abbreviations

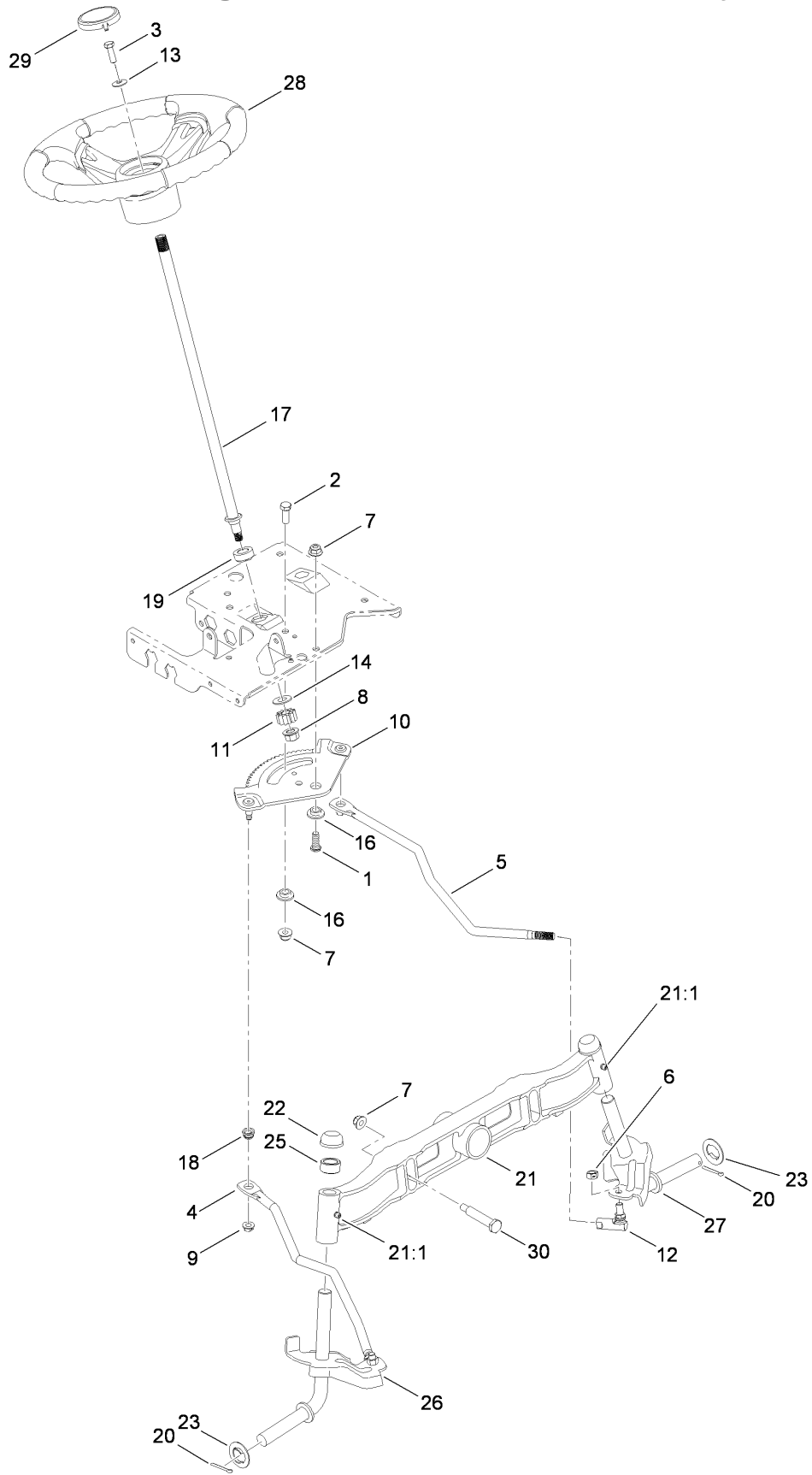
Part descriptions in this catalog may include the following abbreviations.

AR. as required	HWHTF. hex washer head thread forming
ASM. assembly	HYD. hydraulic
BBC. blade brake clutch	LH. left hand
CARR. carriage	NI. nylon insert
CCW. counter clock wise	NPTF. national pipe thread fine
CW. clockwise	PFH. phillips flat head
DEG. degrees	PPH. phillips pan head
ECM. electronic control module	PPHTF. phillips pan head thread forming
EXT. external	PRH. phillips round head
FH. flat head	PTH. phillips truss head
GA. gauge	PTO. power-take-off
HD. heavy-duty	RH. right hand
HF. hex flange	ROPS. roll-over protection system
HH. hex head	SFH. slotted fillister head
HHF. hex head flange	SHH. slotted hex head
HHFTF. hex head flange thread forming	SHWH. slotted hex washer head
HJ. hex jam	SPH. slotted pan head
HLH. hex lag head	SQH. square head
HOC. height-of-cut	SRH. slotted round head
HSBH. hex socket button head	STD. standard
HSFH. hex socket flat head	TAP. self tapping
HSH. hex socket head	TTH. torx truss head
HWH. hex washer head	

Footnotes

- ❶ Not illustrated

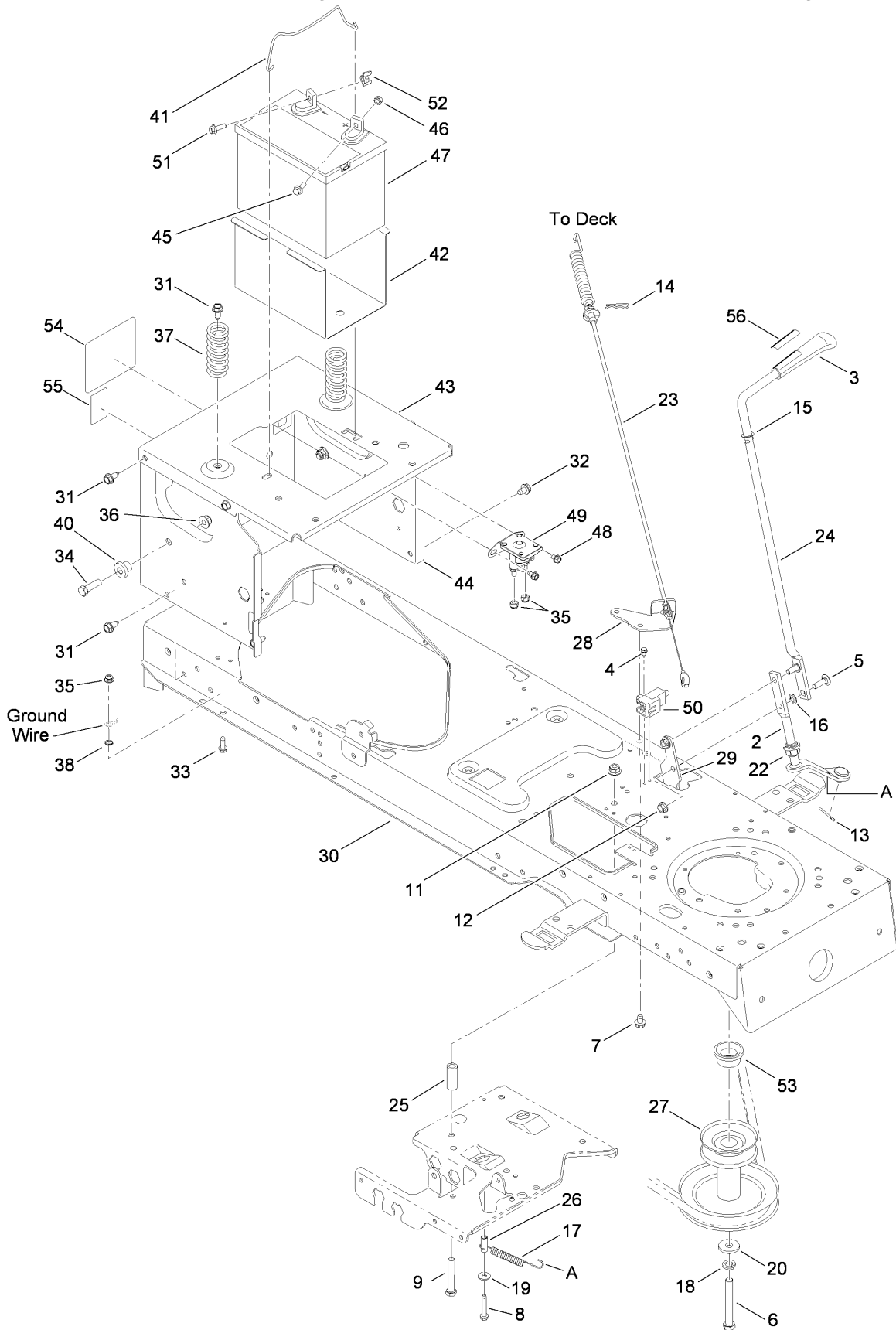
Steering and Front Axle Assembly



Steering and Front Axle Assembly

Ref	Part No.	Qty.	Description				
1	112-0631	1	Screw-HH				
2	112-0492	1	Screw-HH				
3	112-0473	1	Screw-HH				
4	112-0355	1	Link-Drag, RH				
5	112-0346	1	Link-Drag, LH				
6	112-0483	1	Nut-Hex, Lock				
7	112-0668	1	Nut-Lock, Flange				
8	112-0859	1	Nut-Lock, Flange				
9	112-0511	1	Nut-Lock, Flange				
10	112-0862	1	Gear-Steering				
11	112-0863	1	Gear-Pinion, Steering				
12	112-0917	1	Ball Joint ASM				
13	112-0924	1	Washer-Flat				
14	112-0925	1	Washer-Flat				
16	112-0881	1	Spacer-Shoulder				
17	112-6097	1	Shaft-Steering				
18	112-0929	1	Bushing				
19	112-6257	1	Bearing-Flange, Hex				
20	112-0860	1	Pin-Cotter				
21	112-6099	1	Pivot-Axle, Cast Iron				
21:1	112-0926	1	Fitting-Grease				
22	112-0323	1	Cap				
23	112-6258	1	Washer-Flat				
25	112-6136	1	Spacer				
26	112-6015	1	RH Axle ASM				
27	112-6016	1	LH Axle ASM				
28	112-6100	1	3 Spoke Wheel Steering ASM				
29	112-3734	1	Cap-Wheel, Steering				
30	112-0699	1	Bolt-Shoulder				

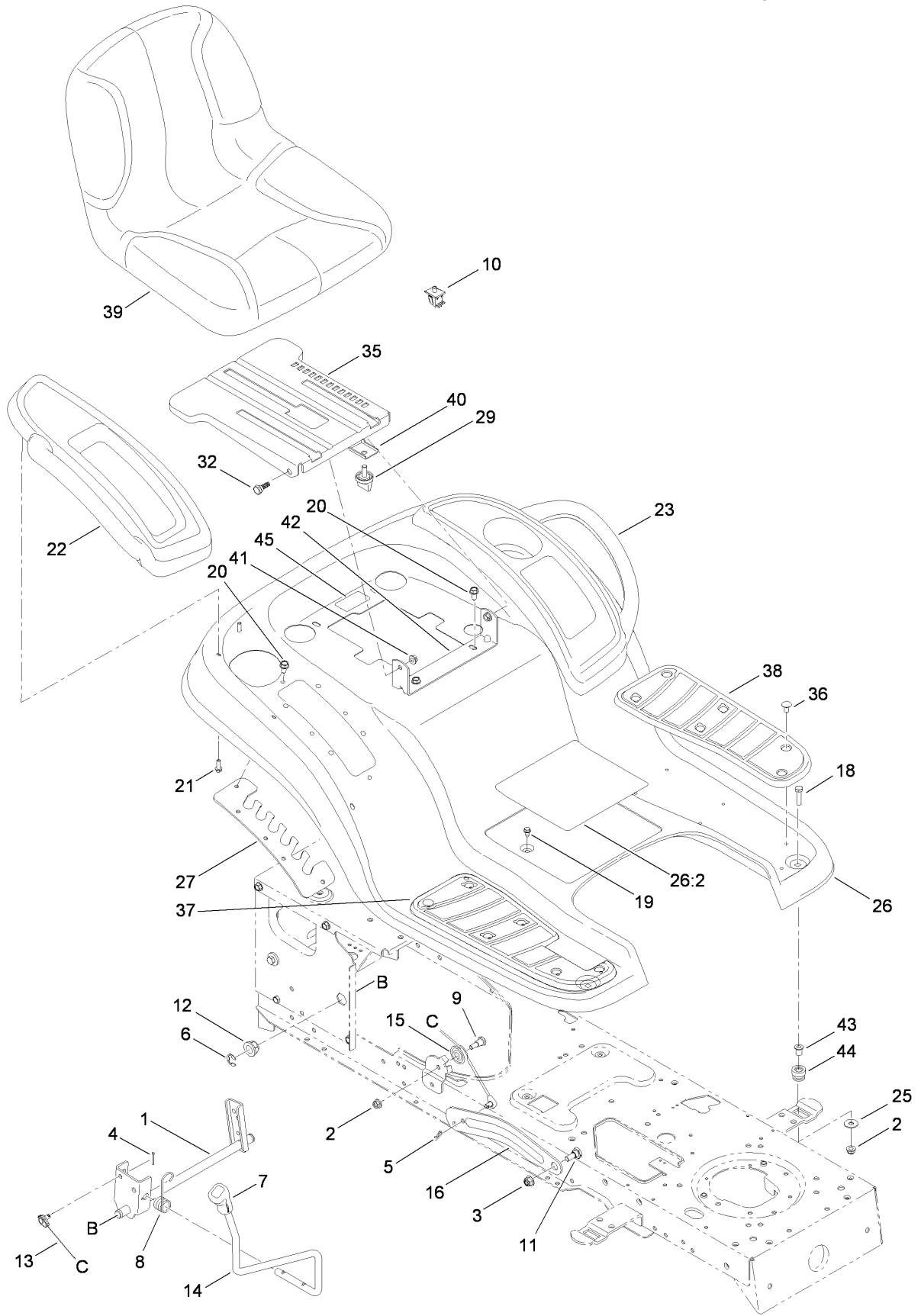
Frame, Battery and Manual PTO Assembly



Frame, Battery and Manual PTO Assembly

Ref	Part No.	Qty.	Description				
2	112-6007	1	Lever-Engage, PTO				
3	112-6011	1	Knob-PTO				
4	112-6206	1	Bolt-Shoulder				
5	112-0598	1	Bolt-CARR				
6	112-6008	1	Screw-HH				
7	112-0676	1	Screw-TAP				
8	112-0843	1	Screw-HWH				
9	112-6009	1	Screw-HH				
11	112-0668	1	Nut-Lock, Flange				
12	112-0511	1	Nut-Lock, Flange				
13	112-6010	1	Pin-Cotter				
14	112-0398	1	Pin-Click				
15	112-0498	1	Washer-Flat				
16	112-0645	1	Nut-Push				
17	112-0567	1	Spring-Extension				
18	112-0428	1	Washer-Lock				
19	112-5989	1	Washer-Flat				
20	112-0380	1	Washer-Flat				
22	112-0384	1	Bearing-Flange, Hex (Split)				
23	112-6137	1	Cable-Engage, Deck				
24	112-0393	1	Handle-Engage, Deck				
25	112-0433	1	Spacer				
26	112-0644	1	Spacer				
27	112-6207	1	Pulley-Engine				
28	112-6105	1	Bracket-Mount, Cable				
29	112-0516	1	Bracket-Stop				
30	112-5974	1	Lower Frame ASM				
31	112-6070	1	Screw-TAP				
32	112-0676	1	Screw-TAP				
33	112-0587	1	Screw-TAP				
34	112-0557	1	Screw-HH				
35	112-0636	1	Nut-Lock, Flange				
36	112-0668	1	Nut-Lock, Flange				
37	112-6208	1	Spring-Compression				
38	112-0703	1	Washer-Lock, External				
40	112-0661	1	Spacer-Shoulder				
41	112-0581	1	Rod-Holddown, Battery				
42	112-0570	1	Tray-Battery				
43	112-6209	1	Bracket-Frame, Seat				
44	112-6254	1	Frame-Upper				
45	112-1070	1	Bolt-Carriage				
46	112-0546	1	Nut-Sems				
47	112-0425	1	Battery-245, Cca (Dry Flat Top)				
48	112-6108	1	Screw-TAP				
49	112-6073	1	Solenoid-12V, 2 Post 2 Tab				
50	112-6210	1	Switch-Interlock, No/Nc				
51	112-6182	1	Bolt-Shoulder				
52	112-1121	1	Nut-Wing				
53	112-6211	1	Spacer				
54	112-1284	1	Decal				
55	112-6289	1	Decal-Hydro Release				
56	112-6286	1	Decal-PTO				

Seat, Fender and Deck Lift Assembly



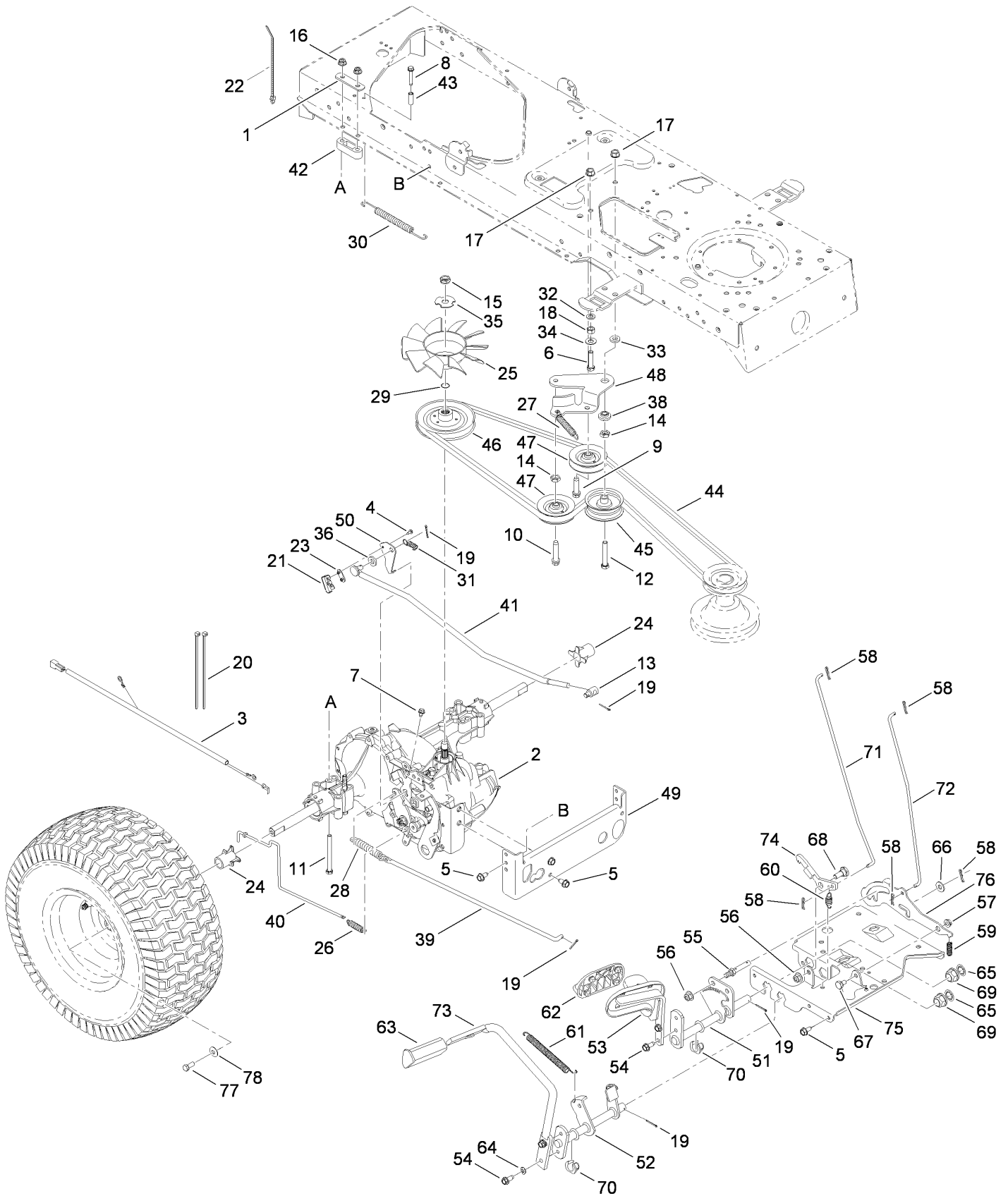
Seat, Fender and Deck Lift Assembly

Ref	Part No.	Qty.	Description				
1	112-5969	1	Lift Shaft ASM				
2	112-0650	1	Nut-Lock, Flange				
3	112-0668	1	Nut-Lock, Flange				
4	112-0459	1	Pin-Cotter				
5	112-0568	1	Pin-Cotter				
6	112-0586	1	Ring-E				
7	112-0585	1	Grip-Handle				
8	112-0477	1	Spring-Torsion				
9	112-0443	1	Bolt-Shoulder				
10	110-9889	1	Switch-Seat				
11	112-0669	1	Bolt-Shoulder				
12	112-0347	1	Bearing-Flange				
13	112-0374	1	Cable-Lift				
14	112-5970	1	Handle-Lift				
15	112-0502	1	Pulley-Roller				
16	112-6259	1	Arm-Lift, RH				
17	112-6260	1	Arm-Lift, LH				
18	112-0373	1	Screw-HH				
19	112-0524	1	Screw-HWHTF				
20	112-6070	1	Screw-TAP				
21	112-0509	1	Screw-TAP				
22	112-6212	1	Cover-Fender, RH				
23	112-6065	1	Cover-Fender, LH (W/Cupholder)				
25	112-0582	1	Washer-Flat				
26	112-6294	1	Fender With Decal				
26:2	112-6290	1	Decal-Safety				
27	112-0629	1	Bracket-Adjusting, Lift				
29	112-0409	1	Knob				
32	112-0575	1	Bolt-Shoulder				
35	112-6214	1	Bracket-Mount, Seat				
36	112-0549	1	Clip-Ratchet, Fastener				
37	112-0540	1	Pad-Foot, RH				
38	112-0545	1	Pad-Foot, LH				
39	112-6215	1	Seat-High				
40	112-6216	1	Bracket-Knob, Adjustment				
41	112-0511	1	Nut-Lock, Flange				
42	112-6217	1	Bracket-Pivot, Seat				
43	112-3733	1	Spacer				
44	112-3732	1	Grommet				
45	112-6282	1	Decal-Toro Hotline				

Fuel Tank, Hood and Dash Assembly

Ref	Part No.	Qty.	Description				
1	112-0444	1	Hood				
2	112-6070	1	Screw-TAP				
3	112-0587	1	Screw-TAP				
4	112-0509	1	Screw-TAP				
5	112-0381	1	Grill				
6	112-5989	1	Washer-Flat				
7	112-6128	1	Bolt-Shoulder, TAP				
8	112-5985	1	Bracket-Pivot				
9	112-6127	1	Bracket-Pivot				
10	112-5986	1	Bracket-Support, Hood				
11	112-6218	1	Bracket-Support, Pivot (LH)				
12	112-6219	1	Bracket-Support, Pivot (RH)				
13	112-6124	1	Plenium-Hood				
14	112-0524	1	Screw-HWHTF				
15	112-0676	1	Screw-TAP				
16	112-0550	1	Screw-TAP				
17	112-0563	1	Screw-TAP				
18	112-0526	1	Lever-Cruise				
19	112-0580	1	Lever-Brake				
20	112-6123	1	Dash-Manual, PTO				
21	112-0485	1	Washer-Spring				
22	112-0604	1	Rod-Lever, Bent				
23	112-6262	1	Support-Dash, Plate (RH)				
24	112-6263	1	Support-Dash, Plate (LH)				
25	112-0678	1	Rod-Support				
26	112-6264	1	Cap-Fuel				
27	112-6119	1	Tank-Fuel, 3 Gal				
28	112-0447	1	Lens-RH				
29	112-0446	1	Lens-LH				
30	112-5810	1	Reflector-RH				
31	112-5811	1	Reflector-LH				
32	112-0408	1	Socket-Headlight				
33	112-0402	1	Lamp-12V, Miniature				
34	112-0535	1	Plug-Choke				
35	112-6265	1	Cbl:throttle				
36	112-6117	1	Meter-Hour				
37	112-6116	1	Module-Switch, Ignition				
38	112-6115	1	Key-Ignition				
39	112-6288	2	Decal				
40	112-5952	1	Decal-Hood, Left Side				
41	112-5953	1	Decal-Hood, Right Side				
42	112-3716	1	Decal-Hood				
43	112-6283	1	Decal-Throttle				
44	112-6295	1	Harness-Wire				
45	112-5943	1	Fuse-20 Amp				

Transmission, Belt and Control Pedal Assembly

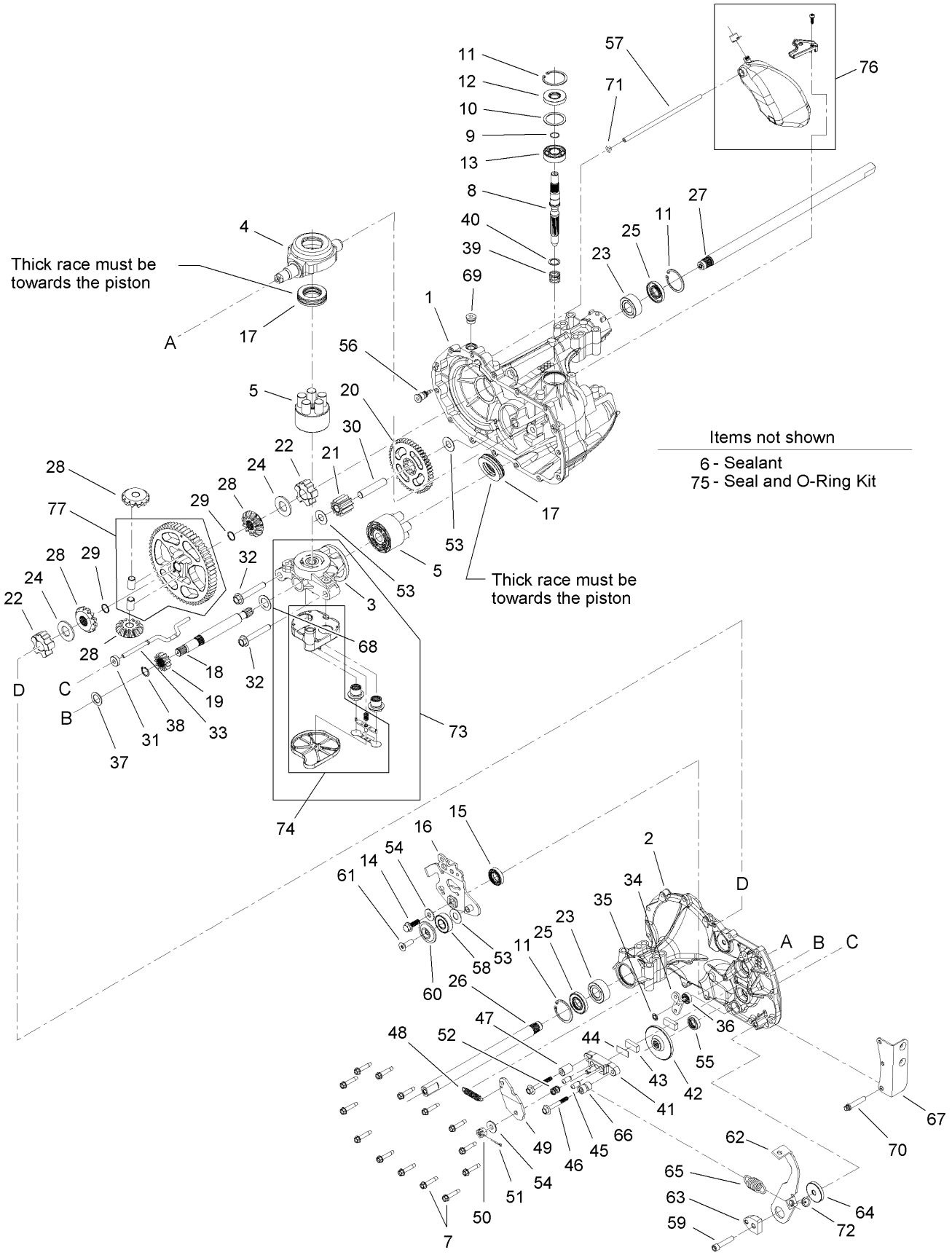


Transmission, Belt and Control Pedal Assembly

Ref	Part No.	Qty.	Description
1	112-0628	1	Bracket-Mounting, Transmission
2	112-6019	1	Hydro Transmission ASM
3	112-0620	1	Bracket-Pivot, Support
4	112-6026	1	Fan-Blade, 10
5	112-6070	1	Screw-TAP
6	112-0578	1	Screw-HH
7	112-6022	1	Screw-TAP
8	112-0843	1	Screw-HWH
9	112-0469	1	Screw-TAP
10	112-6143	1	Screw-TAP
11	112-0667	1	Screw-HH
12	112-6009	1	Screw-HH
13	112-0908	1	Ferrule
14	112-0493	1	Nut-Jam
15	112-6144	1	Nut-Jam
16	112-0650	1	Nut-Lock, Flange
17	112-0385	1	Nut-Lock, Flange
18	112-0668	1	Nut-Lock, Flange
19	112-0568	1	Pin-Cotter
20	112-0527	1	Tie-Cable
21	112-0602	1	Switch-Spring, Short
22	112-0866	1	Tie-Cable
23	112-0625	1	Plate-Insulator
24	112-6025	1	Sleeve
25	112-6145	1	Fan
26	112-6027	1	Spring-Extension
27	112-0873	1	Spring-Extension
28	112-0350	1	Spring-Extension
29	112-6028	1	Ring-Wire
30	112-6029	1	Spring-Extension
31	112-0875	1	Spring-Extension
32	112-0415	1	Washer-Lock
33	112-0920	1	Washer-Flat
34	112-0572	1	Washer-Flat
35	112-6146	1	Washer-Lock
36	112-0544	1	Washer-Flat
38	112-0345	1	Spacer-Shoulder
39	112-6030	1	Rod-Brake
40	112-6031	1	Rod-Hydro
41	112-6032	1	Rod-Control
42	112-0673	1	Spacer-Transaxle
43	112-0644	1	Spacer
44	112-6147	1	Belt-V
45	112-0313	1	Pulley-Idler, Flat
46	112-6148	1	Pulley-Input
47	112-6149	1	Pulley-Idler, Y Type
48	112-0525	1	Bracket-Idler, Center Double
49	112-6034	1	Bracket-Torq, Transmission
50	112-6035	1	Bracket-Actuator
51	112-0850	1	Control ASM
52	112-5998	1	Speed Control ASM
53	112-0851	1	Control Pedal ASM

Ref	Part No.	Qty.	Description
54	112-0395	1	Screw-HWH
55	112-0599	1	Pin
56	112-0668	1	Nut-Lock, Flange
57	112-0511	1	Nut-Lock, Flange
58	112-0459	1	Pin-Cotter
59	112-0506	1	Spring
60	112-0510	1	Spring-Extension
61	112-0348	1	Spring-Extension
62	112-0543	1	Pad-Pedal
63	112-6001	1	Pad-Brake
64	112-0366	1	Washer-Lock
65	112-0339	1	Washer-Flat
66	112-0541	1	Washer-Flat
67	112-0542	1	Bolt-Shoulder
68	112-0442	1	Bolt-Shoulder
69	112-0347	1	Bearing-Flange
70	112-0387	1	Bearing-Flange, Hex (Split)
71	112-6150	1	Rod-Brake, Lock
72	112-0662	1	Rod-Control, Cruise
73	112-6005	1	Pedal-Brake
74	112-6004	1	Latch-Cruise
75	112-0681	1	Bracket-Support, Steering
76	112-5812	1	Bracket-Lockout
77	112-0551	1	Screw-HH
78	112-0435	1	Washer-Bell

Transmission Assembly No. 112-6019

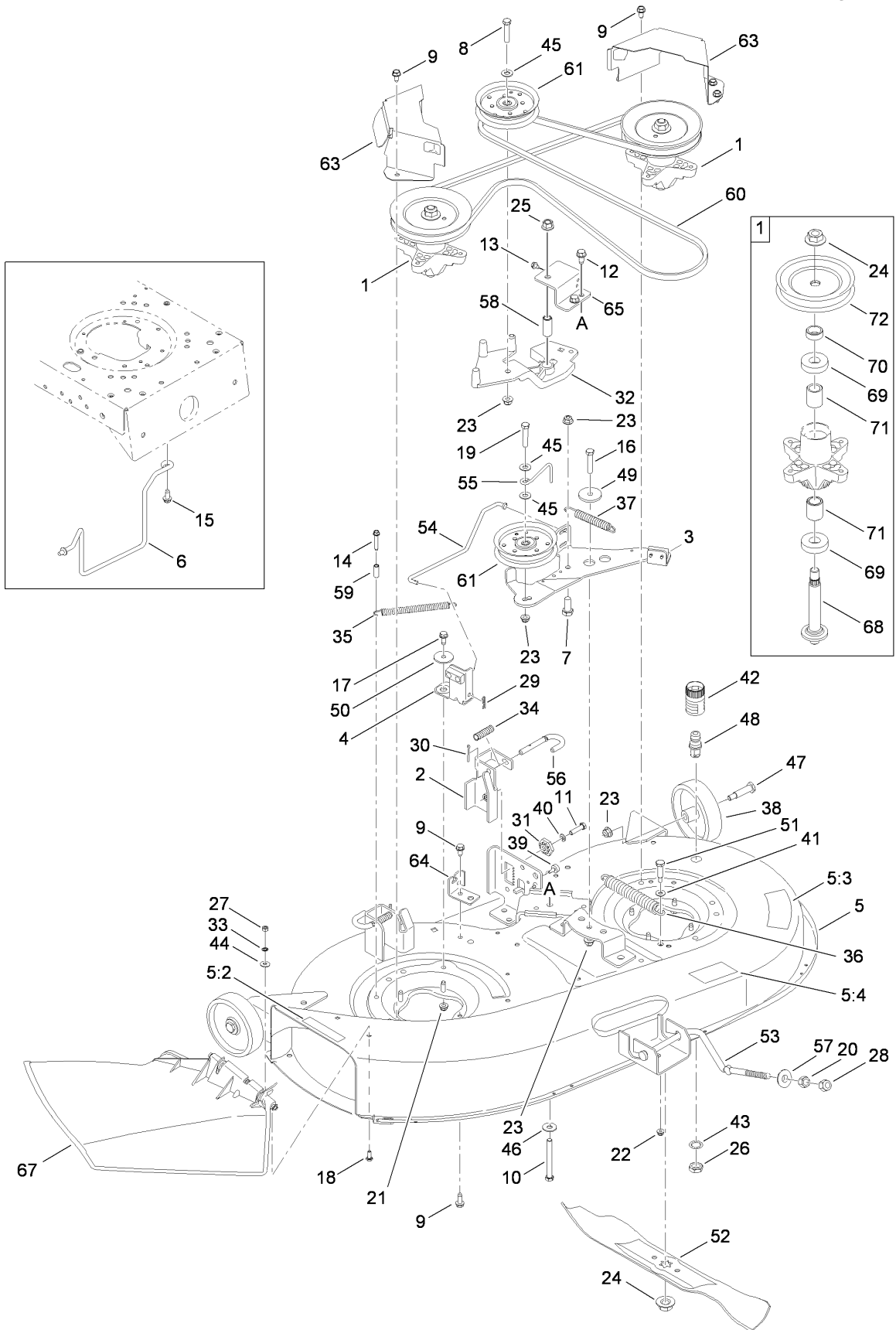


Transmission Assembly No. 112-6019

Ref	Part No.	Qty.	Description
1	104-5301	1	Main Housing ASM
2	104-5302	1	Side Housing ASM
3	104-5303	1	Center Section ASM
4	104-5304	1	Swashplate-Trunnion
5	103-2666	2	Cylinder Block Kit
6	104-2147	1	Sealant
7	104-5305	14	Screw-HHF
8	104-5306	1	Shaft-Input
9	104-5307	1	Ring-Retaining
10	104-5308	1	Spacer
11	104-5309	3	Ring-Retaining
12	104-5310	1	Seal-Lip
13	104-5311	1	Bearing-Ball
14	104-5312	1	Screw-HF
15	104-5313	1	Seal-Lip
16	112-6190	1	Control-Arm
17	94-6922	2	Bearing-Thrust
18	104-5315	1	Shaft-Motor
19	104-5316	1	Gear-Pinion, 13T
20	104-5317	1	Gear
21	104-5318	1	Gear-Jackshaft, 10T
22	104-5320	2	Bearing-Sleeve
23	104-5321	2	Bearing-Sleeve, Outboard
24	94-1943	2	Washer
25	104-5322	2	Seal-Lip
26	112-6191	1	Axle-Shaft
27	112-6192	1	Axle-Shaft
28	112-6193	1	Miter Gear Kit
29	104-5328	2	Ring-Retaining, Spiral
30	104-5329	1	Pin-Jackshaft
31	104-5330	1	Magnet-Ring
32	94-6926	2	Bolt
33	104-5335	1	Rod-Actuator, Bypass
34	104-5336	1	Arm-Bypass
35	104-5337	1	Ring-Retaining
36	104-5338	1	Seal-Lip
37	104-5339	1	Washer-Flat
38	104-5340	1	Ring-Retaining
39	94-1936	1	Spring-Block
40	94-1937	1	Washer-Thrust, Block
41	104-5343	1	Yoke-Brake
42	104-5344	1	Rotor-Brake
43	104-2171	2	Puck-Brake
44	104-2181	1	Puck-Plate
45	104-2176	2	Pin-Brake
46	104-5345	2	Screw-HF
47	104-2180	1	Spacer
48	112-6194	1	Spring Kit
49	112-6195	1	Brake-Arm
50	93-3807	1	Nut-Castle
51	3272-7	1	Pin-Cotter
52	104-2188	1	Spring-Brake, Anti Drag

Ref	Part No.	Qty.	Description
53	94-1933	3	Washer
54	5-4460	2	Washer-Pivot
55	104-5347	1	Seal-Oil
56	104-5349	1	Fitting-Sae
57	104-5350	1	Hose-Expansion, Tank
58	104-2156	1	Bearing
59	104-2155	1	Screw
60	104-2157	1	Spacer-Locating
61	104-2158	1	Screw-Countersunk
62	112-6196	1	Return-Arm
63	104-2119	1	Puck-Adjusting
64	112-6197	1	Washer-Flat
65	104-5356	1	Spring-Extension
66	104-5357	1	Spacer
67	112-6198	1	Bracket-Torque
68	104-5360	1	Washer-Shaft, Motor
69	104-2189	1	Plug-Thread, Straight
70	104-2148	1	Screw-TTH
71	104-5361	1	O-Ring
72	104-5363	1	Guide-Spring
73	106-6522	1	Center Section Filter Bypass ASM
74	106-6523	1	Filter ASM
75	104-5368	1	Seal Kit
76	104-5369	1	Expansion Tank Kit
77	112-6199	1	60T Bull Gear Differential Kit (W/Pins)

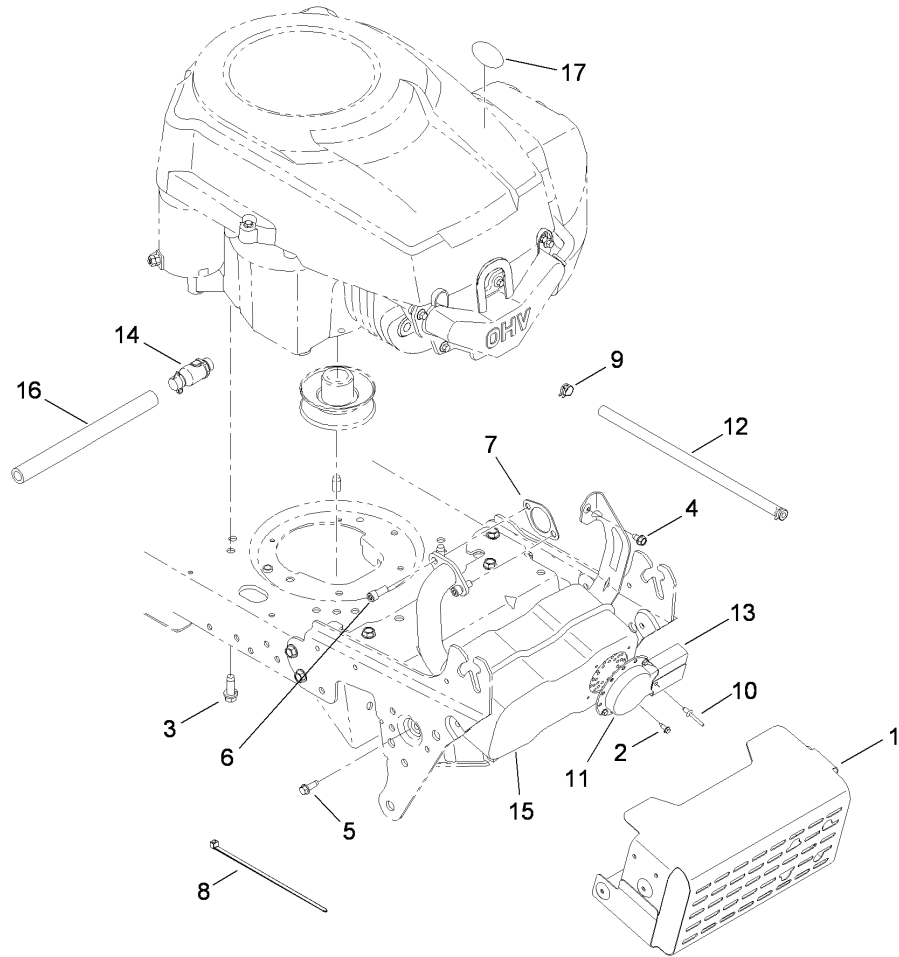
42 Inch Deck Spindle and Belt Drive Assembly



42 Inch Deck Spindle and Belt Drive Assembly

Ref	Part No.	Qty.	Description
1	112-6221	1	Spindle ASM
2	112-0413	1	LH Hanger Bracket ASM
3	112-6172	1	Bracket-Idler
4	112-3742	1	Brake ASM
5	112-6293	1	Deck ASM (With Decals)
5:2	112-6285	1	Decal-Chute
5:3	112-6284	1	Decal-Deck
5:4	112-1270	1	Decal-Routing, Belt
6	112-6071	1	Rod-Keeper, Belt
7	112-0855	1	Screw-HH
8	112-0513	1	Screw-HH
9	112-6070	1	Screw-TAP
10	112-3745	1	Screw-HH
11	112-0373	1	Screw-HH
12	112-0906	1	Screw-HWHTF
13	112-6022	1	Screw-TAP
14	112-0843	1	Screw-HWH
15	112-0395	1	Screw-HWH
16	112-0557	1	Screw-HH
17	112-1090	1	Screw-HH
18	112-0499	1	Screw-HH
19	112-0421	1	Screw-HH
20	112-0458	1	Nut-Hex
21	112-0650	1	Nut-Lock, Flange
22	112-0636	1	Nut-Lock, Flange
23	112-0668	1	Nut-Lock, Flange
24	112-0330	1	Nut-Lock, Flange
25	112-0859	1	Nut-Lock, Flange
26	112-0351	1	Nut-Hex
27	112-0522	1	Nut-Hex
28	112-0476	1	Nut-Lock, Hex (Nylon)
29	112-0459	1	Pin-Cotter
30	112-0412	1	Pin-Cotter
31	112-0327	1	Gear-Adjustment, Deck
32	112-6069	1	Bracket-Idler
33	112-0623	1	Retainer-Bolt
34	112-0406	1	Spring-Compression
35	112-0528	1	Spring-Extension
36	112-6043	1	Spring-Extension
37	112-3746	1	Spring-Extension
38	112-0337	1	Wheel-Deck, Rear
39	112-6273	1	Bumper
40	112-0366	1	Washer-Lock
41	112-5989	1	Washer-Flat
42	112-0916	1	Adapter-Nozzle, Water
43	112-0643	1	Washer-Lock
44	112-0485	1	Washer-Spring
45	112-0572	1	Washer-Flat
46	112-0380	1	Washer-Flat
47	112-0334	1	Bolt-Shoulder
48	112-6274	1	Nozzle-Water, Deck
49	112-0584	1	Spacer-Shoulder

Ref	Part No.	Qty.	Description
50	112-3747	1	Spacer-Shoulder
51	112-6068	1	Bolt-Shoulder
52	112-0315	1	Blade
53	112-0607	1	Rod-Deck, Front Adjustment
54	112-3748	1	Rod-Brake
55	112-5879	1	Rod-Keeper, Belt
56	112-0436	1	Pin-Handle, Deck Release
57	112-0641	1	Cup-Pivot, Lift
58	112-6274	1	Nozzle-Water, Deck
59	112-0644	1	Spacer
60	112-5800	1	Belt-V Type
61	112-0314	1	Pulley-Idler
63	112-6067	1	Cover-Belt
64	112-0718	1	Bracket-Cable, Deck
65	112-6066	1	Support-Bracket, Pivot
67	112-0353	1	Discharge Chute ASM
68	112-6062	1	Shaft-Spindle
69	112-0377	1	Bearing-Ball
70	112-6061	1	Spacer
71	112-0389	1	Spacer
72	112-0613	1	Pulley-Deck



Muffer and Shield Assembly

Ref	Part No.	Qty.	Description
1	112-6202	1	Shield-Muffer
2	112-0626	1	Screw-HWHTF
3	112-6163	1	Screw-HH, TAP
4	112-0524	1	Screw-HWHTF
5	112-0587	1	Screw-TAP
6	112-6012	1	Screw-HSH
7	112-6203	1	Gasket-Exhaust
8	112-0527	1	Tie-Cable
9	112-0573	1	Clamp-Hose
10	112-3741	1	Rivet-Pop
11	112-0453	1	Deflector-Muffer
12	112-0720	1	Hose-Fuel
13	112-0730	1	Deflector-Muffer, Long
14	112-6094	1	Drain-Oil
15	112-6204	1	Muffer-Single, Kohler
16	112-0553	1	Hose-Drain
17	112-5960	1	Decal-Check Oil

Attachments and Accessories

For 13AX61RG848 - LX427 Lawn Tractor

Product Name	Model/Part
Washout Port Kit	112-5803
Blade Kit, Extreme (42 Inch Deck)	112-6048
42 Inch Two-Stage Snowthrower	190-032-101
42 Inch Twin Bagger	190-180-190
46 Inch Front Blade	190-833-000
8 Inch Rear Wheel Weight Kit	59159
Mulch Kit (42 Inch Deck)	77210
10 cu. ft. Poly Dump Cart	79935
Folding Loading Ramp	79949
Sweeper	79985
Tire Chain Kit	82722
Blade Kit (2 Blades, 42 Inch Deck)	98022

