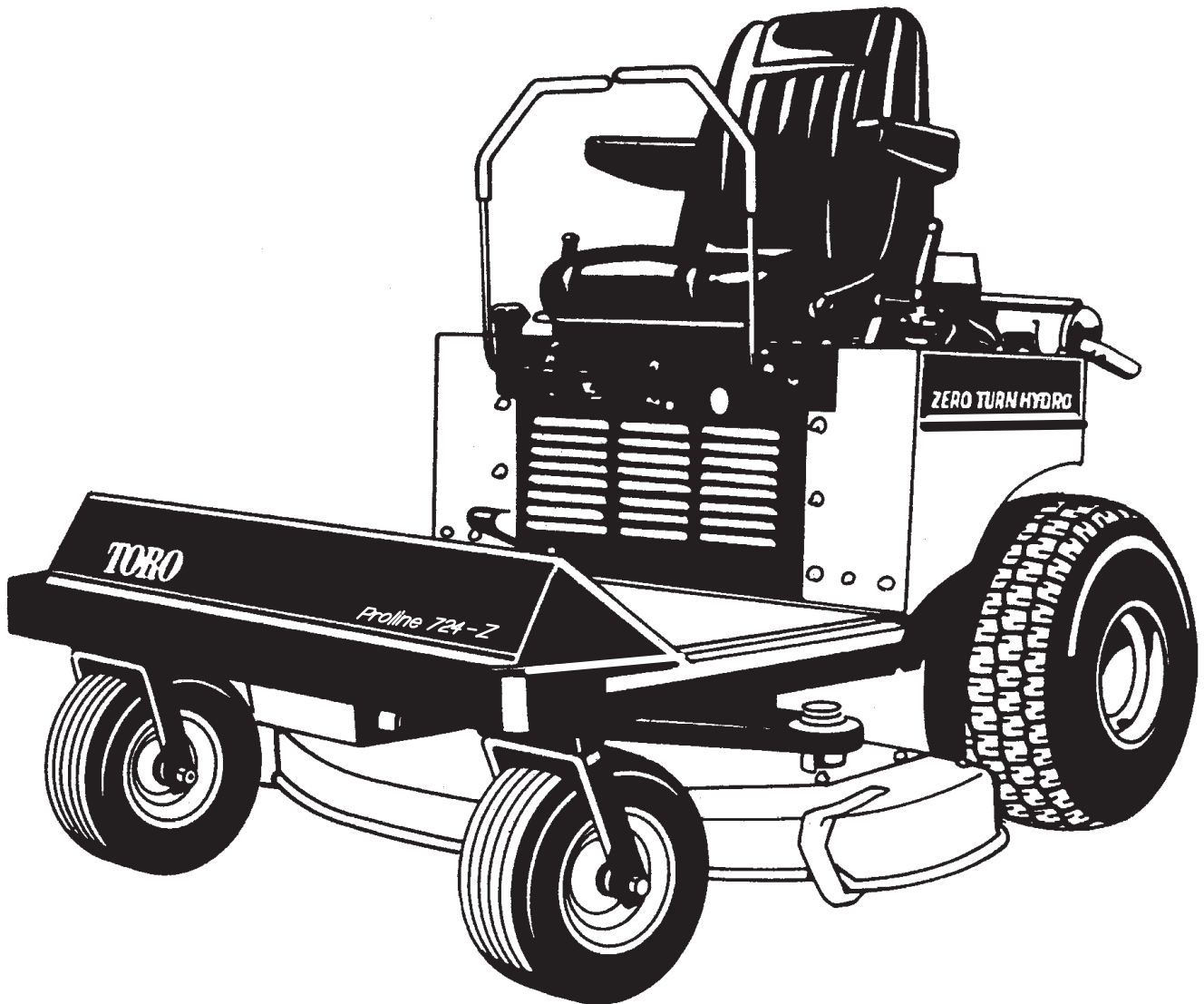


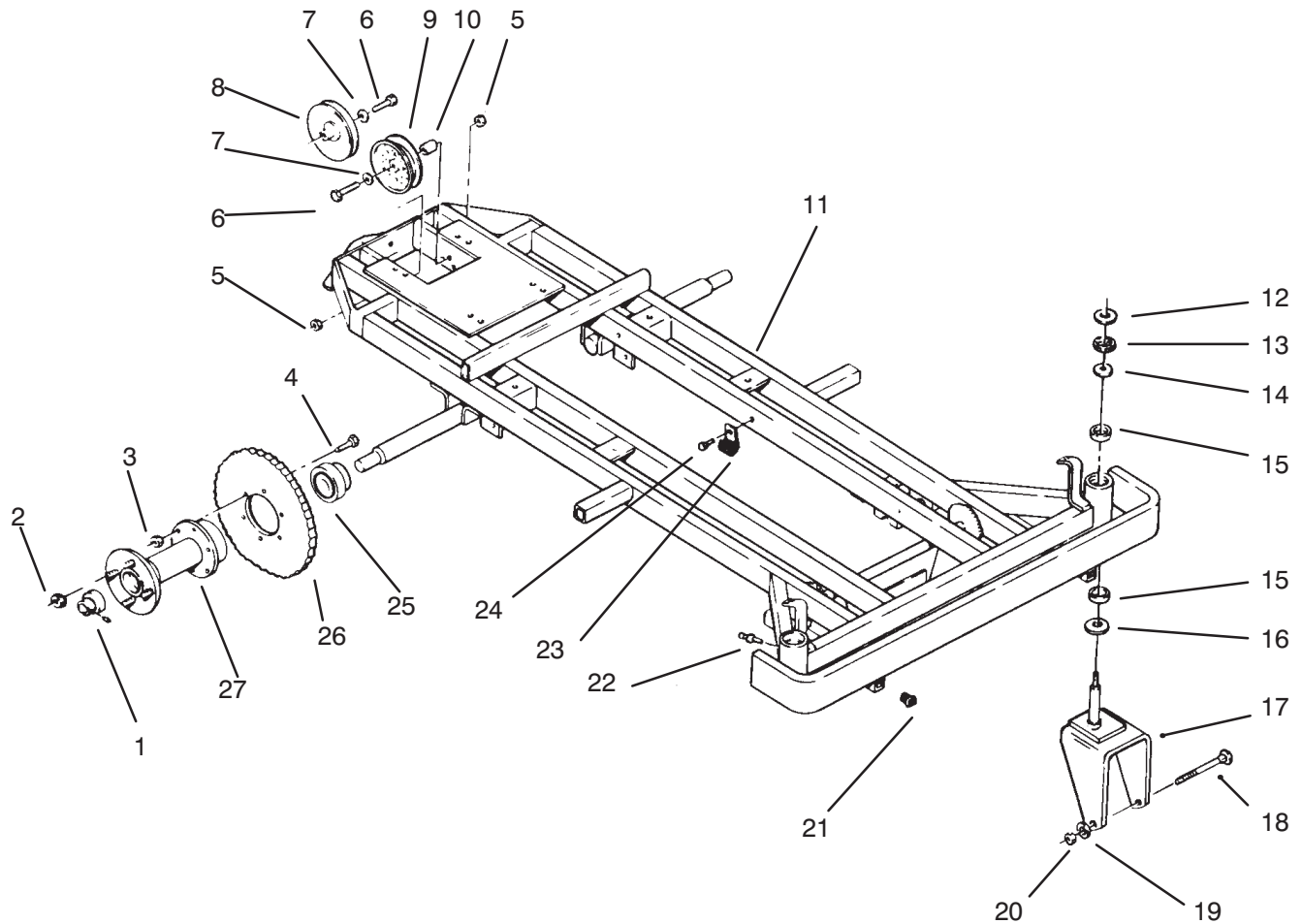


MODEL NO. 74140-590001 & UP

PARTS
CATALOG

Proline 724-Z
HYDROSTATIC MOWER





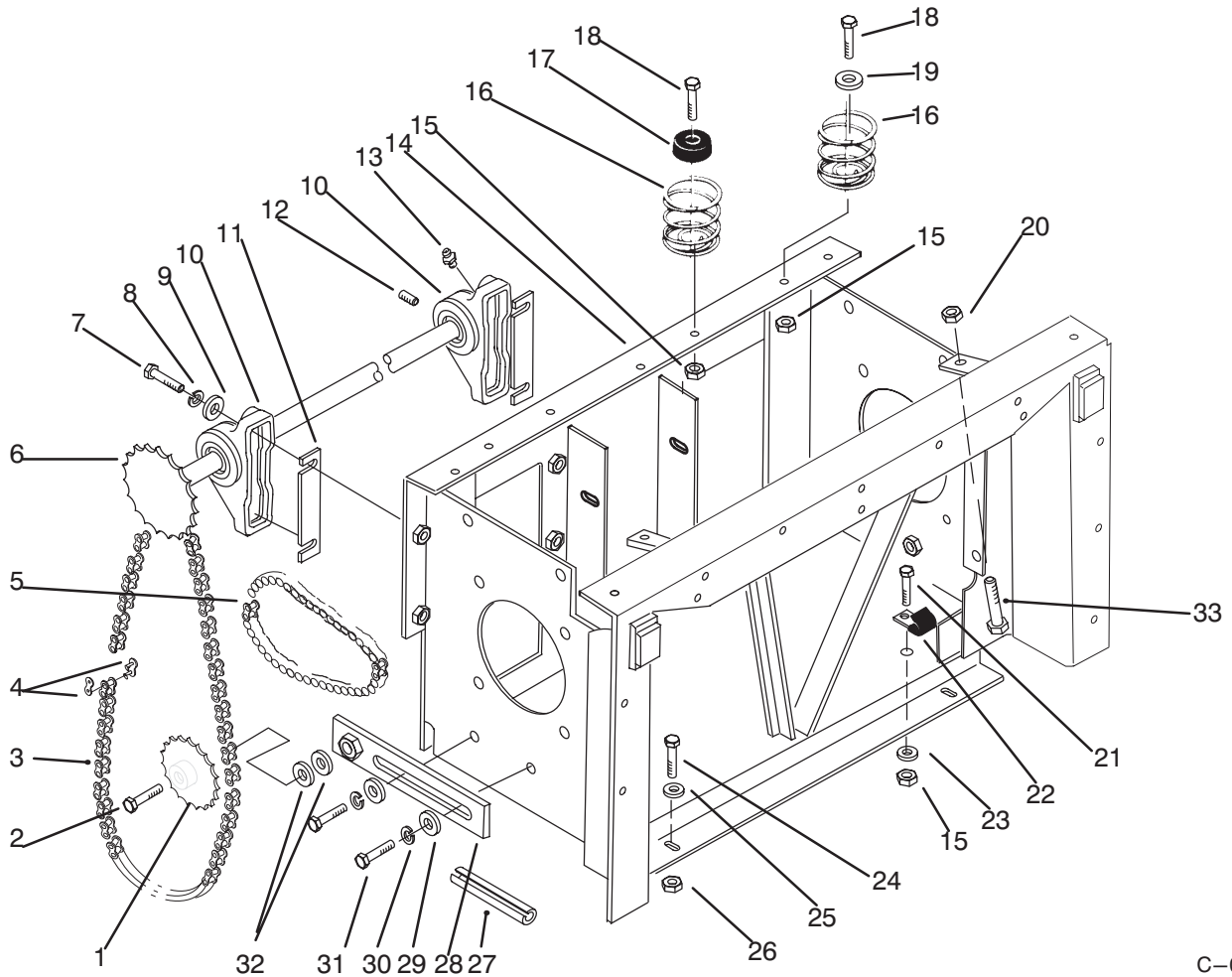
C-0911

FRAME, REAR HUB AND FRONT WHEEL FORK

Ref. No.	Part No.	Description	No. Used
1	113530	Axle Hub Bearing – Outer	2
2	242-50	Nut – Lug	8
3	3296-39	Nut	12
4	323-7	Bolt	12
5	3296-39	Nut	2
6	323-10	Bolt	2
7	3256-4	Washer	2
8	115102	Pulley – V-Idler	1
9	113633	Pulley – Flat Idler	1
10	115101	Bushing	1
11	92-1759	Frame w/Bumper	1
12	32151-91	Ring – Retaining	2
13	9547	Washer – Thrust	2
14	920251	Washer	4
15	92-1714	Bushing – Front Bearing	4

Ref. No.	Part No.	Description	No. Used
16	9548	Washer – Thrust	2
17	79-4210	Fork – Front Wheel	2
18	327-15	Bolt	2
19	3253-8	Washer – Lock	2
20	3217-30	Nut	2
21	115226	Cap	2
22	302-5	Fitting – Grease	4
23	8830	Clip	3
24	32144-4	Bolt	3
25	113529	Axle Hub Bearing – Inner	2
26	114295	Sprocket	1
27	92-4845	Hub – Rear Wheel (Incl. Ref.# 22)	2
*	3290-378	Tie – Cable	1

*Not Illustrated

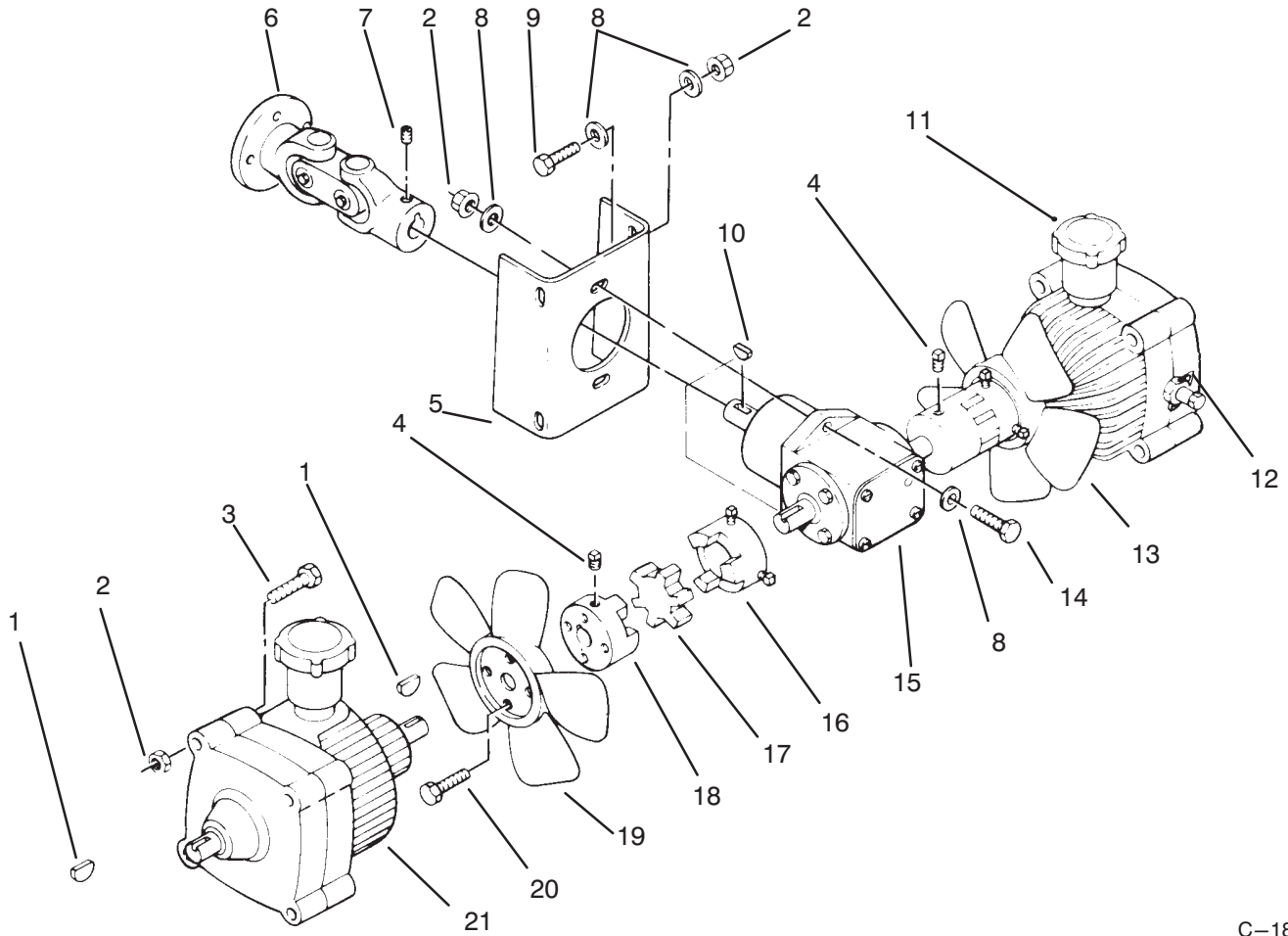


C-0912

TRANSMISSION DRIVE FRAME

Ref. No.	Part No.	Description	No. Used
1	111887	Sprocket - Idler	2
2	327-4	Bolt - Idler Sprocket	2
3	116735	Chain - Secondary	2
4	109002	Link - Connecting	2
5	113691	Chain - Primary	2
6	113671	Jackshaft	2
7	323-8	Bolt	8
8	3253-21	Washer - Lock	4
9	3256-4	Washer - Flat	8
10	113531	Bearing - Pillow Block (Incl. Ref. #12 & 13)	4
11	113567	Shim - Bearing	X
12	3245-32	Screw - Set	4
13	302-2	Fitting - Grease	4
14	116888	Frame - Transaxle	1
15	3296-29	Nut	3
16	114497	Spring - Seat	4

Ref. No.	Part No.	Description	No. Used
17	116839	Bumper	2
18	322-5	Bolt	4
19	2844	Washer	2
20	3217-6	Nut	2
21	322-3	Bolt	2
22	8830	Clip	1
23	3256-23	Washer - Flat	1
24	323-6	Bolt	4
25	3256-24	Washer	2
26	3296-39	Nut	4
27	115200	Edge - Trim	1
28	112304	Bracket - Chain Tensioner	2
29	2844	Washer	4
30	3253-21	Washer - Lock	4
31	323-6	Bolt - Hex	5
32	3256-27	Washer	6
33	322-41	Screw - Machine, Hex. Hd.	2

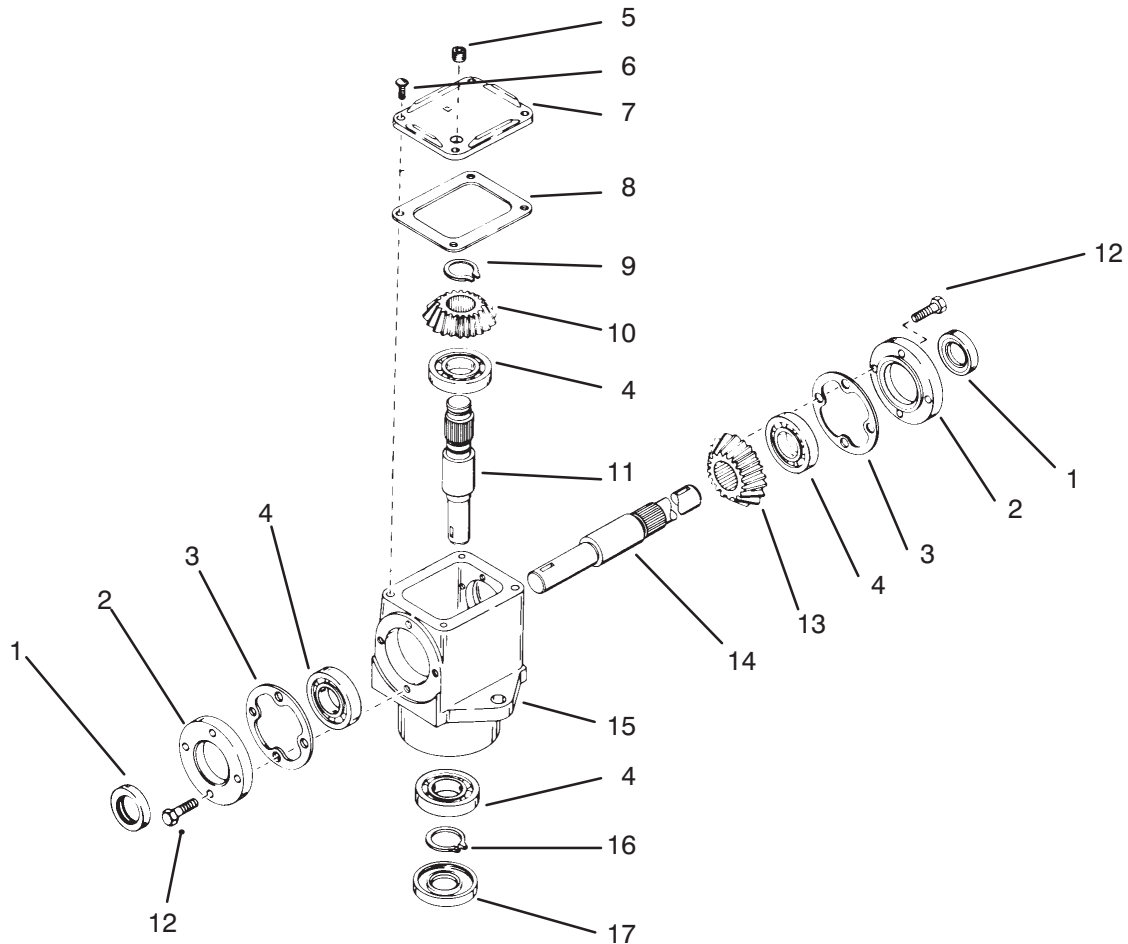


C-1800

TRANSMISSION DRIVE

Ref. No.	Part No.	Description	No. Used
1	937218	Key – Hi-Pro	4
2	3296-39	Nut	14
3	323-14	Bolt	8
4	3248-6	Screw – Set Sq	8
5	117295	Bracket – Gearbox	1
6	113578	U-Joint – Double	1
7	3247-3	Screw – Set	2
8	3256-4	Washer	18
9	323-6	Bolt	4
10	937225	Key – Hi-Pro	3
11	113569	Transmission – Hydrostatic, Clockwise Rotation Input Shaft	1
12	115960	Clip – Dump Valve	2

Ref. No.	Part No.	Description	No. Used
13	92-1799	Fan – LH, Clockwise	1
14	323-7	Bolt	2
15	113640	Gear Box – “T” Peerless 794381 (Model 1000-010)	1
16	115857	Coupler – LJ, .670 x .125 Keyway	2
17	113663	Spider – Coupling	2
18	115856	Coupler – LJ, .875 x .1875 Keyway	2
19	113650	Fan – RH Counterclockwise	1
20	32144-1	Screw	8
21	113568	Transmission – Hydrostatic, Counterclockwise Rotation Input Shaft	1



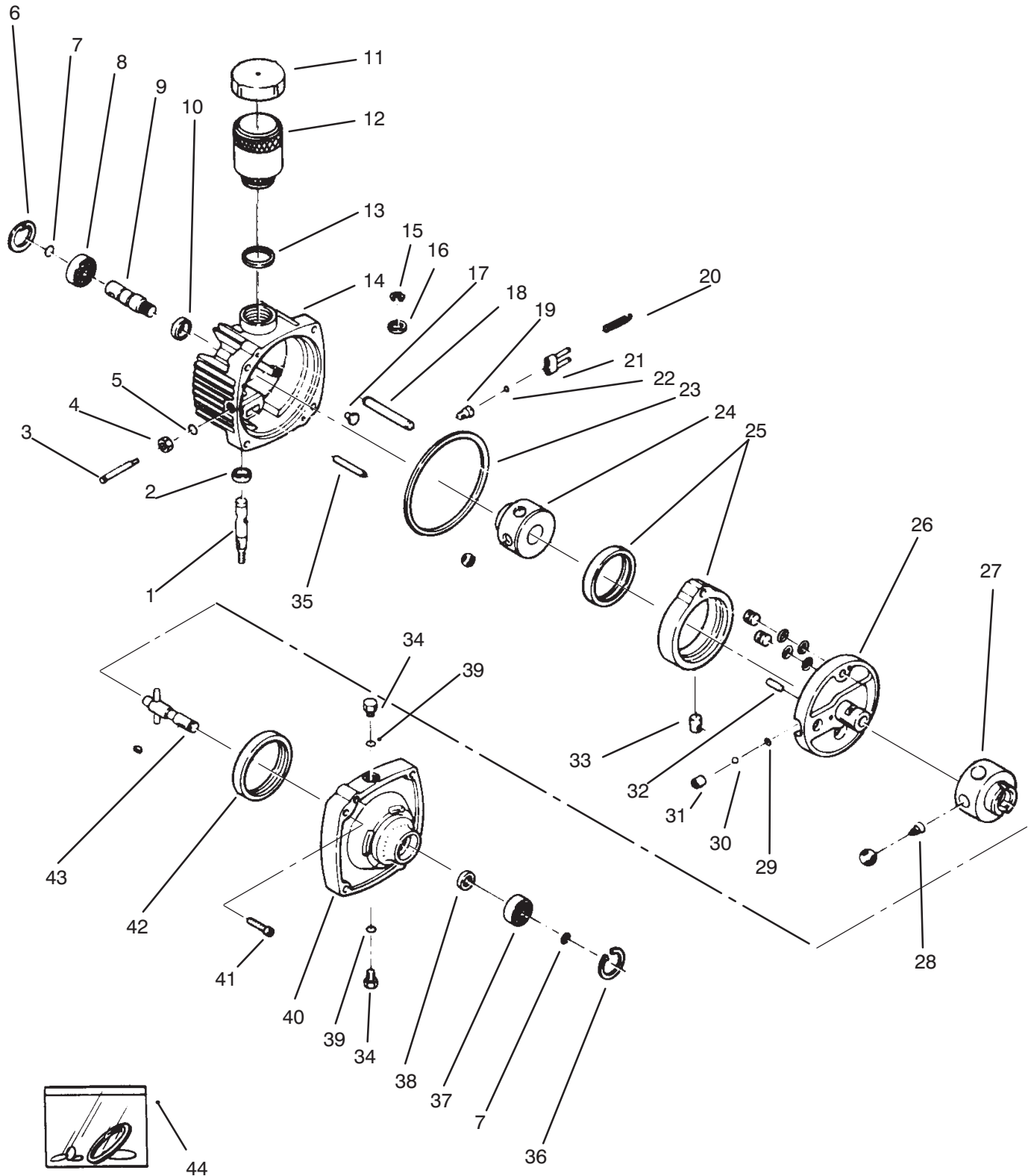
C-1801

“T” GEARBOX ASSEMBLY

Ref. No.	Part No.	Description	No. Used	Ref. No.	Part No.	Description	No. Used
1	788031	Seal – Oil	2	12	792026	Screw– Hex. Hd.	8
2		Cap – End	2	13	778210	Gear – Miter	1
3	788030	Gasket – Cap	2	14	776127	Shaft – Input	
4	780034	Bearing – Ball	4	15	770047A	Housing – T–Drive	1
5	28534	Plug – Pipe	1	16	788019	Ring – Snap	1
6	792025	Screw – Pan Hd.	4	17	788029	Seal – Oil	1
7	772067	Cover	1	*	794381	Head Assy – T–Drive (Incl. Cap & Seal Assembly & Ref.# 1 & 2)	1
8	788028	Cover – Gasket	1	*	786029	Cap & Seal Assy – Retainer (Incl. Ref. #1 & 2)	2
9	788018	Ring – Snap	1				
10	778101	Gear – Miter	1				
11	776060A	Shaft – Output	1				

*Not Illustrated

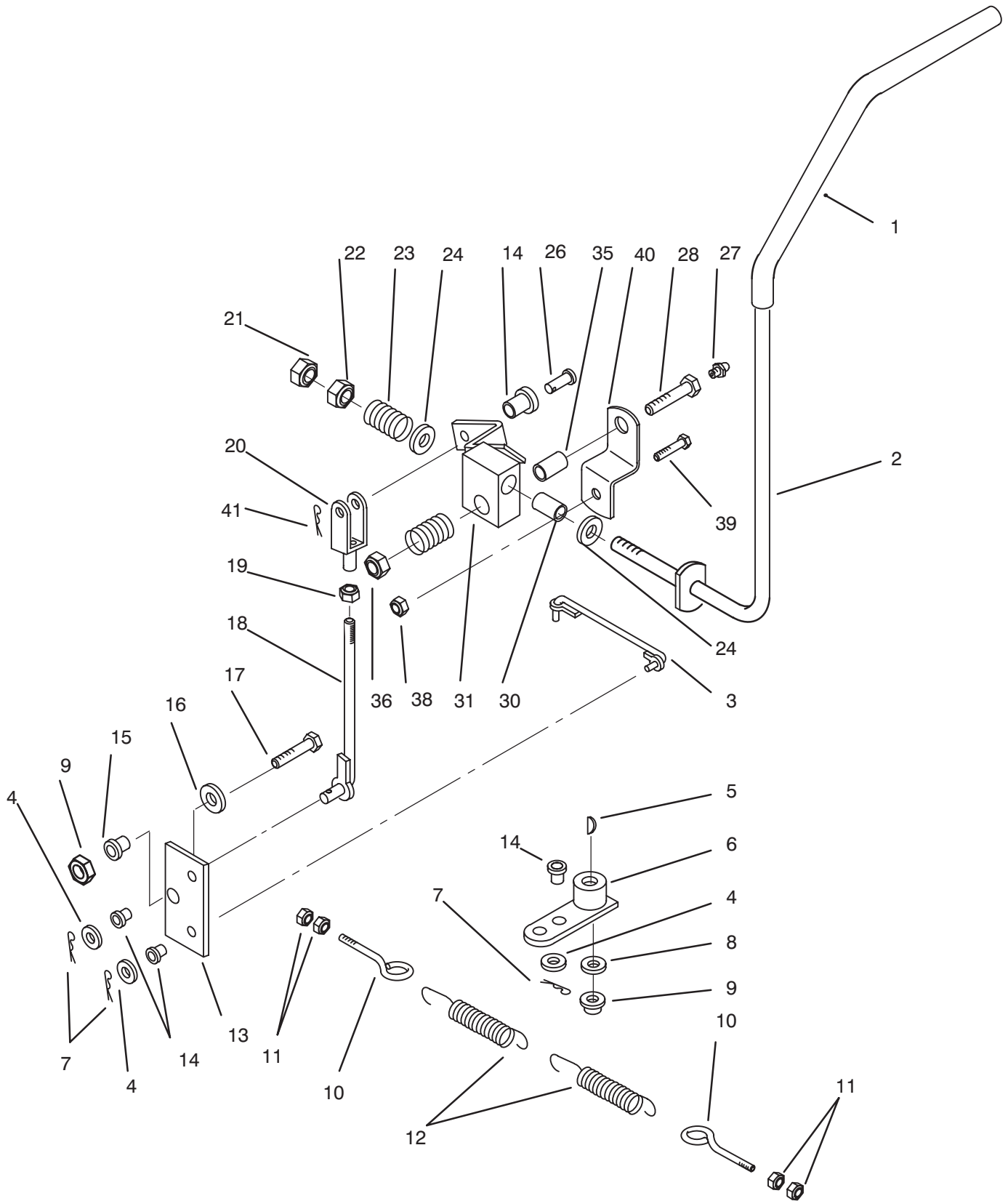
HYDROSTATIC TRANSMISSION



HYDROSTATIC TRANSMISSION

Ref. No.	Part No.	Description	No. Used	Ref. No.	Part No.	Description	No. Used
1	112606	Kit – Control Shaft	2	26	112630	Pintle Assembly – Used in CCW rotation trans. Model #00700-023 (Incl. Ref.#29-32)	1
2	112605	Seal – Oil	2	27	112599	Rotor & Balls Assembly – Motor Incl. Ref. #28)	2
3	112633	Valve – Dump	2	28	112612	Spring – Piston	10
4		Nut	2	29	112611	Ring – Retaining	4
5	112631	O-Ring	2	30	112610	Ball	4
6	56-3290	Ring – Retaining	2	31	112609	Body – Check Valve	4
7	112601	Ring – Retaining	2	32	112608	Pin – Coil	4
8	112602	Bearing – Ball, Input	2	33	112607	Insert – Cam Ring	2
9	112603	Shaft – Input	2	34	112613	Plug Assembly – O-Ring (Incl. Ref. #39)	2
10	56-2820	Seal – Oil	2	35		Dowel (Ref.)	1
11	112589	Cover – Reservoir	2	36		Ring – Retaining	1
12	112590	Body – Reservoir	2	37		Bearing – Ball	1
13	112591	Seal – Ring, Sq	2	38		Ring – Retaining	1
14	112625	Kit – Cover (Incl. Ref. # 1, 2, 10, 15, 16, 18 & 35)	1	39	112614	O-Ring	2
15	112593	Ring – External Retaining	2	40	112620	Body Assembly (Incl. Ref.# 7, 34, 36-39, 41 & 43)	2
16	112594	Washer – Control Shaft	2	41	112616	Screw – Socket Hd.	4
17	112595	Button	2	42		Seal – Oil	1
18		Dowel (Ref.)	1	43	112615	Shaft Assembly – Output	2
19	112626	Fitting – Guide Assembly	2	44	112618	Kit – Overhaul Sealing (Incl. Gasket Ass'y & Ref. #2, 4, 5, 10, 13, 19, 22, 23, & 39)	1
20	112629	Spring – Dump Valve	4		112632		
21	112628	Bracket & Pins Assembly	2	*	740315	Manual – Hydrostatic Transmission Repair	1
22	112627	O-Ring	2				
23	112596	Seal – Ring, Sq	2				
24	112597	Rotor & Balls Assembly – Pump	2				
25	112619	Ring Sub-Assembly – Cam (Incl. Pump Race & Cam Ring)	2				

TRANSMISSION DRIVE LINKAGE

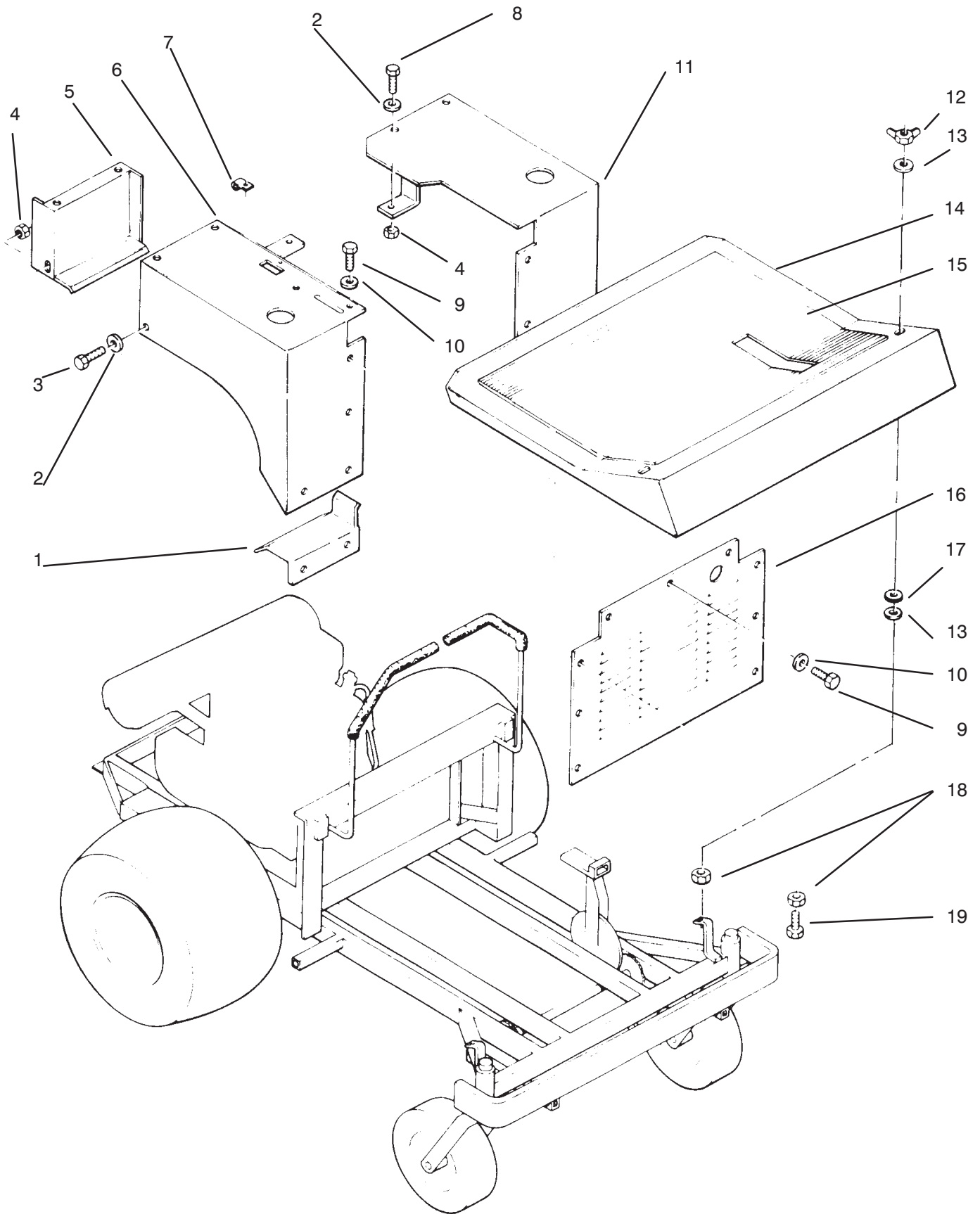


TRANSMISSION DRIVE LINKAGE

Ref. No.	Part No.	Description	No. Used	Ref. No.	Part No.	Description	No. Used
1	92-6519	Grip Handle - Control	2	19	3219-2	Nut - Hex	2
2	117561	Lever - Steering LH	1	20	282-2	Yoke - Threaded	2
*	117560	Lever - Steering RH	1	21	3218-5	Nut - Jam	4
3	78-7560	Linkage Drive, Lower RH	1	22	3296-23	Nut	2
*	78-7570	Linkage Drive, Lower LH	1	23	113632	Spring	4
4	3256-23	Washer	6	24	3256-26	Washer - Special	4
5	937082	Key - Woodruff	2	26	283-61	Pin - Clevis	2
6	113680	Arm - Hydro Control	2	27	302-5	Fitting - Grease	2
7	3272-7	Pin - Cotter	6	28	116460	Bolt - Shoulder (Incl. Ref. #27)	2
8	3256-24	Washer - Flat	2	30	113675	Bushing - Bronze	2
9	3296-39	Nut	4	31	114661	Pivot - Steering Lever LH	1
10	113688	Bolt - Eye	4	*	114662	Pivot - Steering Lever RH	1
11	3217-5	Nut	8	35	115295	Bushing	1
12	113081	Spring - Neutral	4	36	3296-23	Nut	1
13	79-1260	Block - Pivot	2	38	3296-29	Nut	1
14	113509	Bushing - Nylon	8	39	322-3	Bolt	1
15	104859	Spacer	2	40	79-0560	Strap	2
16	2844	Washer - Special	2	41	9335044	Pin - Cotter	2
17	323-7	Bolt	2	*	3290-378	Tie - Cable	4
18	113570	Linkage - Drive, Upper	2				

*Not Illustrated

FENDERS AND COVERS



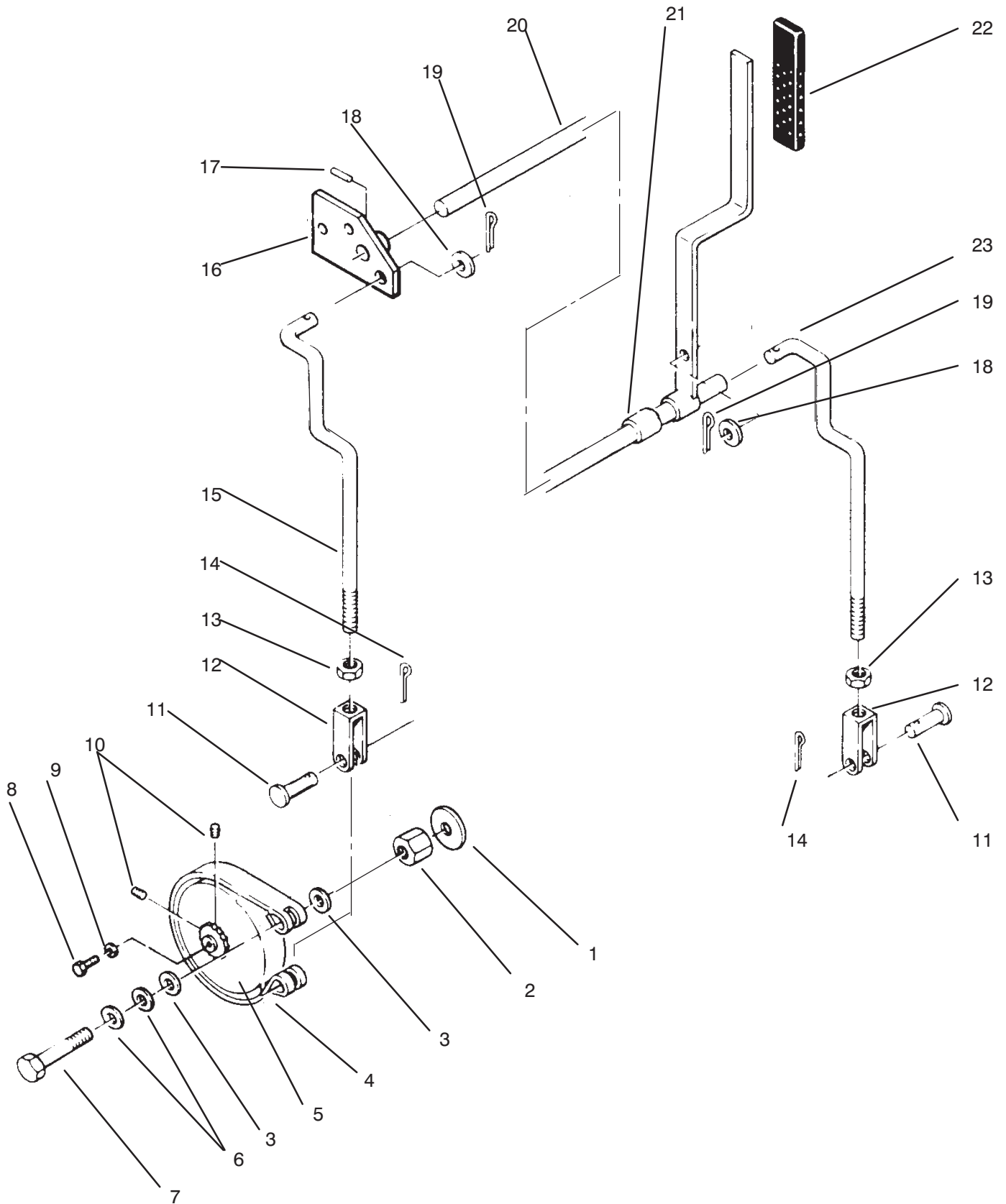
FENDERS AND COVERS

Ref. No.	Part No.	Description	No. Used
1	111911	Bracket – Fender, RH Front	1
*	111912	Bracket – Fender, LH Front	1
2	3256-22	Washer – Flat	10
3	321-3	Bolt	10
4	3296-42	Nut	10
5	111909	Bracket – Fender, RH Rear	1
*	111910	Bracket – Fender, LH Rear	1
6	79-5630	Fender – RH	1
7	111357	Clip	1
8	321-4	Bolt	2
9	32144-4	Bolt	11

Ref. No.	Part No.	Description	No. Used
10	3256-2	Washer	11
11	113659	Fender – LH	1
12	915585	Nut – Wing	2
13	3256-68	Washer – Fender	4
14	111891	Pan – Floor	1
15	93-3226	Mat – Footrest	1
16	79-2710	Panel – Front	2
17	107675	Washer – Rubber	2
18	3217-6	Nut	4
19	322-41	Bolt	2

*Not Illustrated

PARKING BRAKE

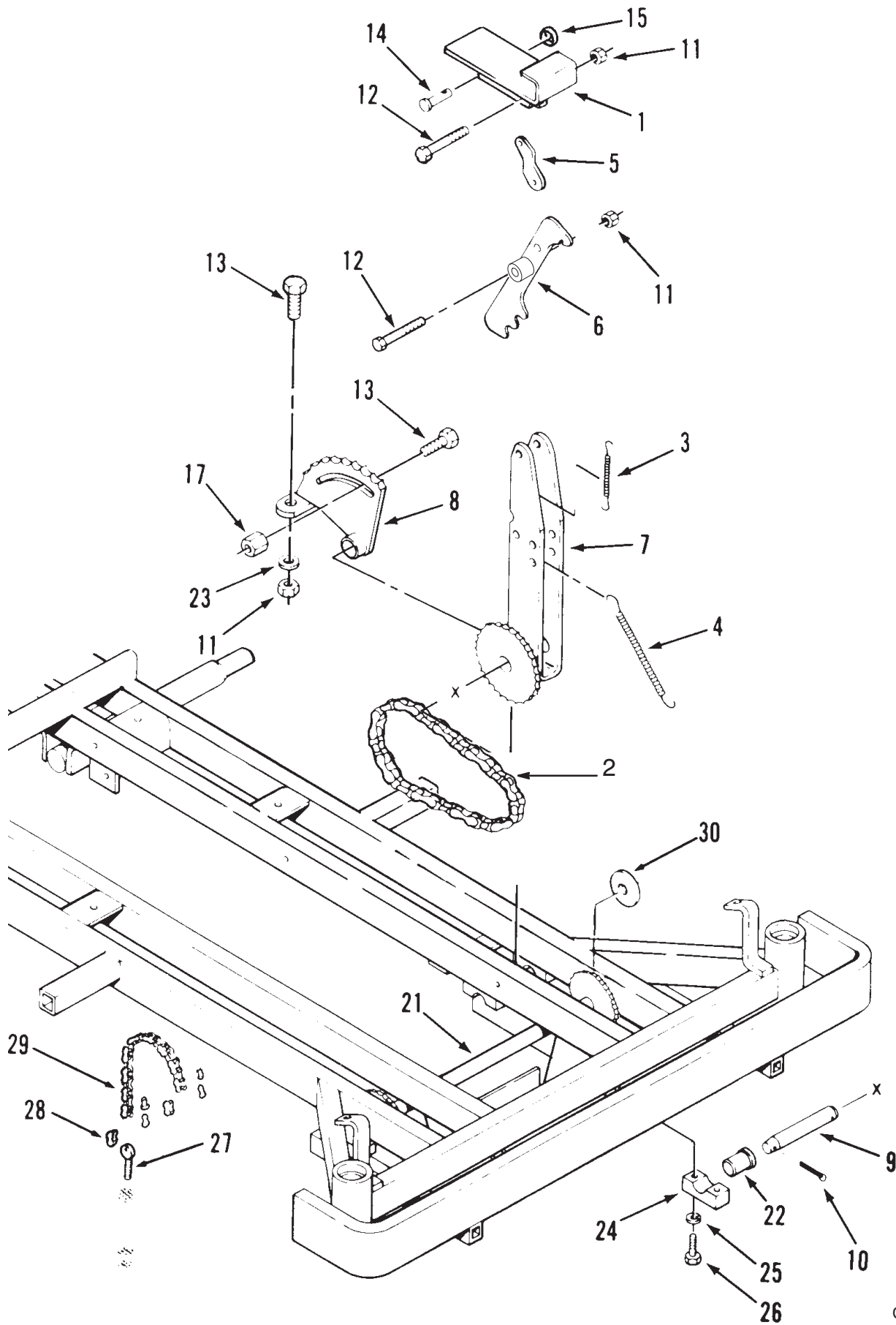


PARKING BRAKE

Ref. No.	Part No.	Description	No. Used	Ref. No.	Part No.	Description	No. Used
1	2844	Washer	2	13	3219-2	Nut	2
2	113690	Nut - Coupling Rod	1	14	3272-6	Pin - Cotter	2
3	3256-24	Washer	1	15	115794	Rod - Brake RH	1
4	113624	Bands - Brake	2	16	116478	Lever - Parking Brake	1
5	113518	Sprocket & Drum #50	2	17	32121-114	Pin - Spirol	1
6	108571	Washer - Spring	4	18	3256-23	Washer - Flat	2
7	323-7	Bolt	2	19	3272-6	Pin - Cotter	2
8	321-3	Bolt	1	20	113668	Rod Assembly - Brake	1
9	103995	Washer	1	21	113665	Spacer	1
10	909848	Setscrew	2	22	62-9130	Grip PTO & Brake - Handle	2
11	283-6	Pin - Clevis	2	23	115793	Rod - Brake LH	1
12	113623	Yoke - Threaded	2				

*Not Illustrated

ATTACHMENT HEIGHT CONTROL



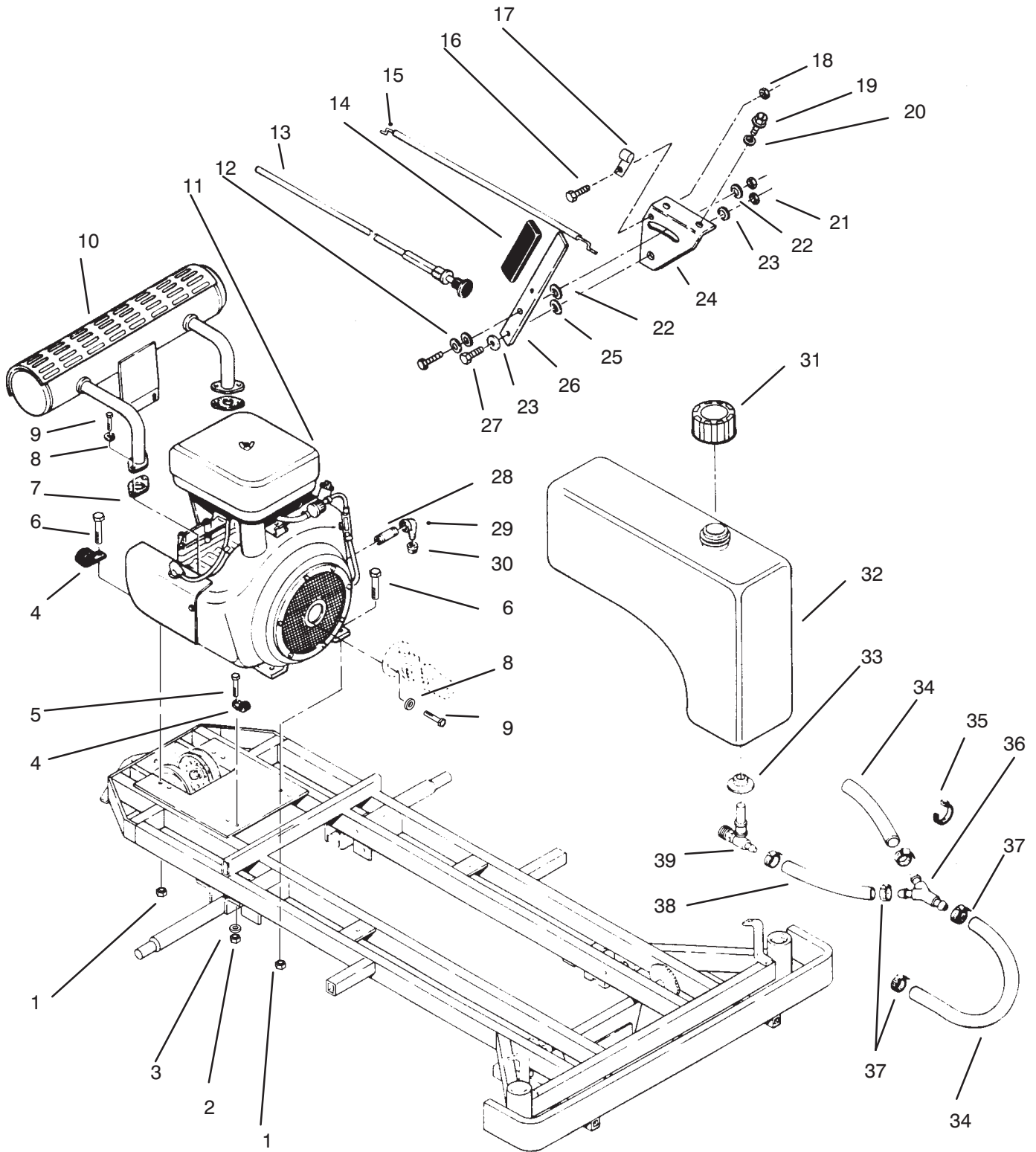
C-1804

ATTACHMENT HEIGHT CONTROL

Ref. No.	Part No.	Description	No. Used	Ref. No.	Part No.	Description	No. Used
1	112954	Pedal – Foot	1	14	114613	Pin – Clevis	1
2	115855	Chain – Foot Pedal	1	15	100307	Ring – Retaining	1
3	113081	Spring – Foot, Short	1	17	112941	Nut – Hex, Special	1
4	114183	Spring – Foot, Long	1	21	113684	Sprocket Assembly	1
5	112955	Link – Pivot	1	22	113687	Bearing – Flanged	4
6	112956	Arm – Lift Pawl	1	23	3253-23	Washer – Flat	8
7	112957	Lever Arm & Sprocket Assy	1	24	114294	Clamp – Cross Shaft	1
8	112958	Sprocket – Height Control	1	25	3256-21	Washer – Lock	8
9	113149	Pin	1	26	323-7	Bolt	8
10	3272-19	Pin – Cotter	2	27	113697	Bolt – Eye	2
11	3296-29	Nut	2	28	6392	Link – Master	2
12	322-9	Bolt	2	29	113699	Chain – Link, Mower Deck	2
13	322-5	Bolt – Hex	2	30	920225	Washer	2

*Not Illustrated

ENGINE AND FUEL SYSTEMS

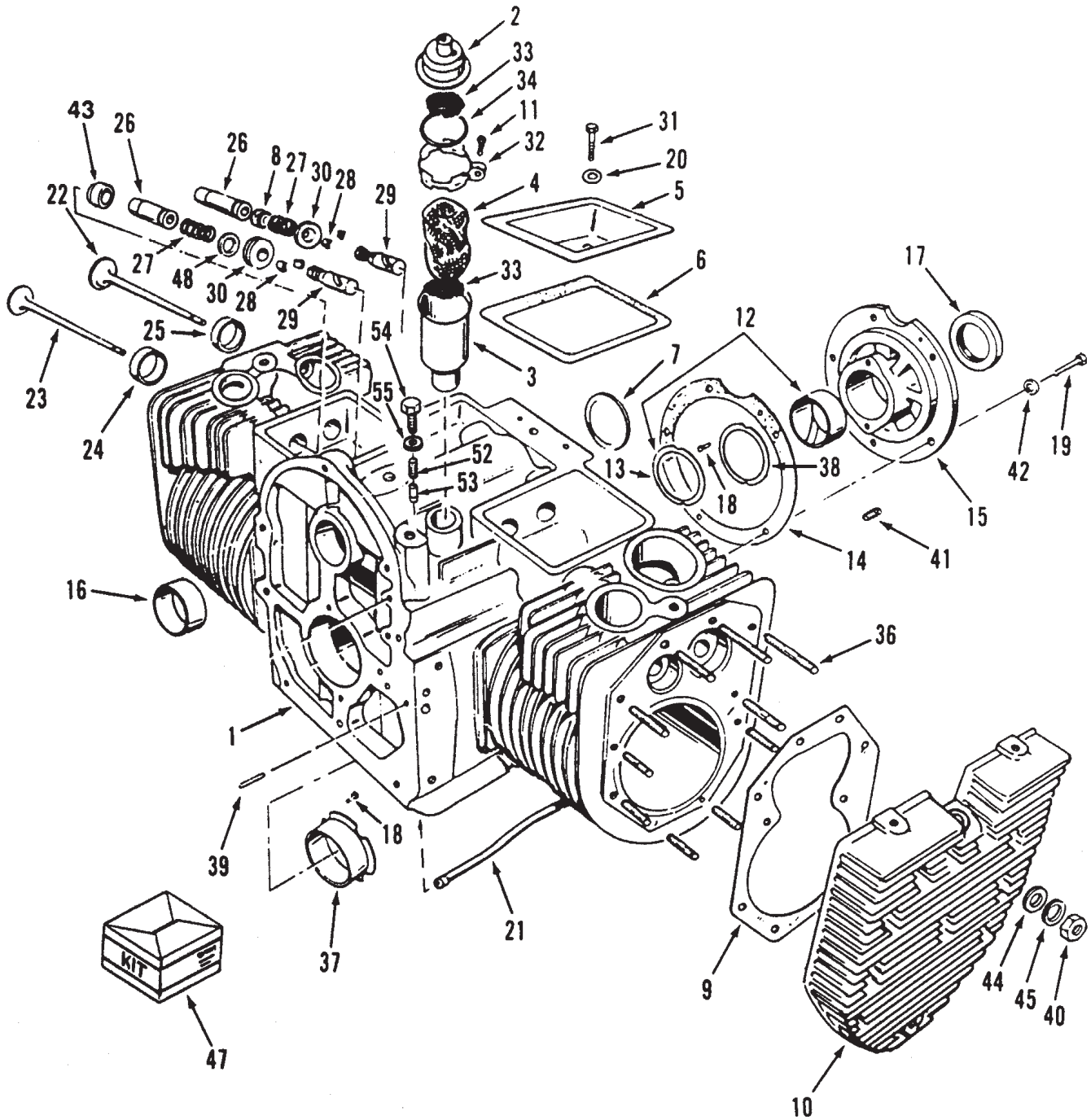


ENGINE AND FUEL SYSTEMS

Ref. No.	Part No.	Description	No. Used	Ref. No.	Part No.	Description	No. Used
1	3296-39	Nut	4	20	3253-3	Washer - Lock	2
2	3296-29	Nut	1	21	108881	Nut	2
3	3256-23	Washer - Flat	1	22	100305	Washer - Friction	2
4	8830	Clip	2	23	3256-24	Washer	1
5	322-3	Bolt	1	24	14-9079	Bracket & Cable - Throttle	1
6	3234-18	Bolt	4	25	6331	Spacer	2
7	82-1520	Gasket - Exhaust	2	26	79-4800	Handle	1
8	3253-4	Washer - Lock	8	27	323-6	Bolt	2
9	3274-22	Bolt	8	28	289-45	Nipple	1
10	117580	Muffler	1	29	2811-10	Elbow	1
11	79-5250	Engine - 24 HP Toro Power Plus P224 G I/10966 Spec. E Engine	1	30	288-4	Cap	1
12	100365	Washer - Lock	2	31	55-3570	Cap - Fuel	1
13	113693	Control - Choke	1	32	78-3270	Tank - Fuel (Incl. Items #33 & 39)	2
14	111922	Grip - Handle	1	33	104047	Bushing	2
15	105014	Cable - Throttle	1	34	47-2967	Line - Fuel (29.5")	2
16	3290-134	Screw	1	35	3290-378	Straps - Tie	4
17	7059	Clip	1	36	111879	Fitting - Fuel Line	2
18	3296-2	Nut	1	37	2412-98	Clamp - Hose	5
19	321-2	Screw	2	38	47-2966	Line - Fuel (5")	1
				39	104048	Valve Assembly - Fuel	2

*Not Illustrated

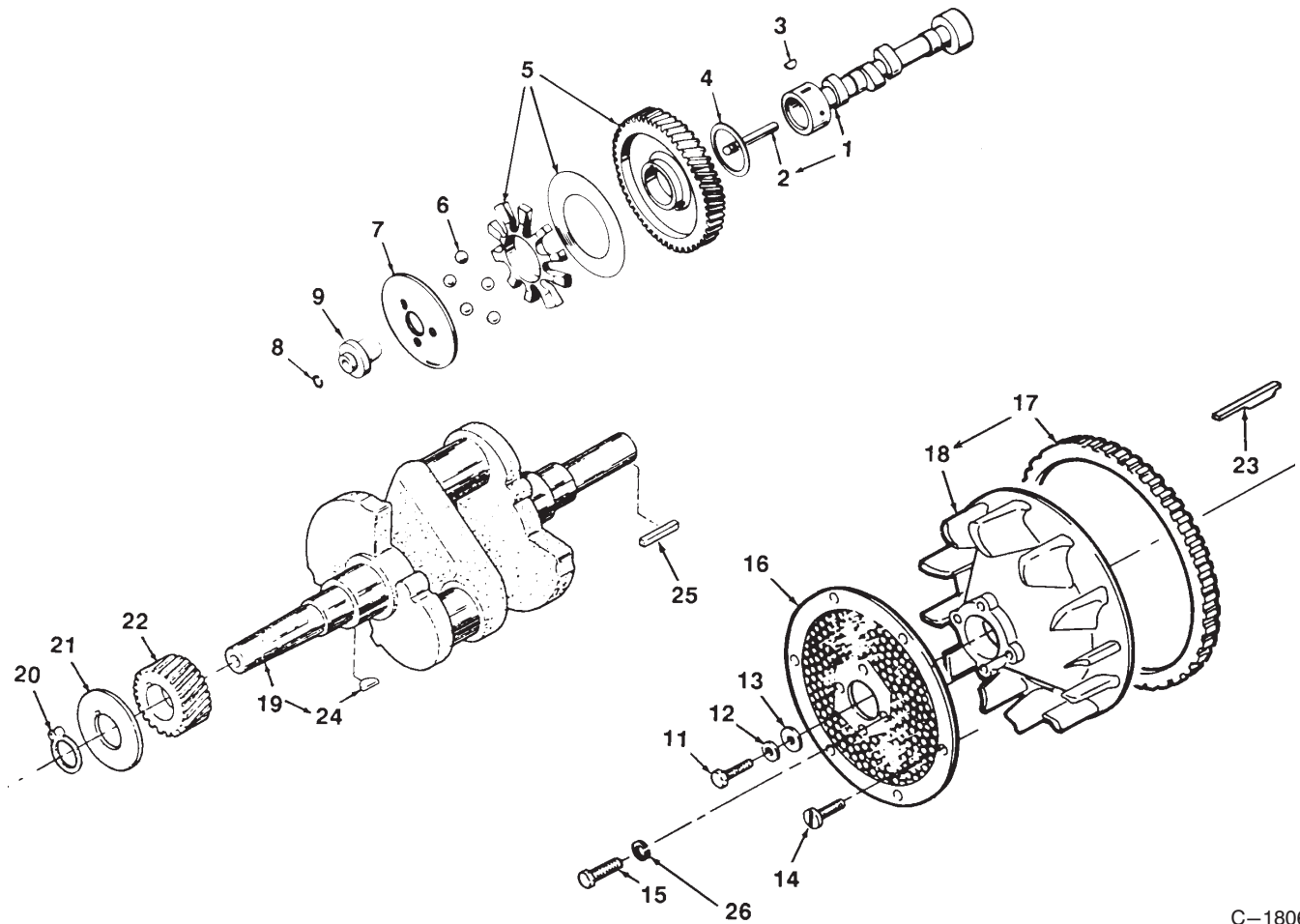
ENGINE CYLINDER BLOCK P224 G Spec. E



ENGINE CYLINDER BLOCK P224 G Spec. E

Ref. No.	Part No.	Description	No. Used	Ref. No.	Part No.	Description	No. Used
1	92-0924	Block - Short 24 HP. Spec E (Incl. Ref.# 3, 7, 13-16,18, 21, 24-26, 30, 36, 38, & 39)	1			.002" Oversize	2
2	82-0550	Cap & Valve - Breather	1	*	92-0925	Insert - Intake Seat .005" Oversize	2
3	82-0540	Tube - Breather	1	*	92-0926	Insert - Intake Seat .010" Oversize	2
4	57-8580	Baffle - Breather Tube	1	*	92-0927	Insert - Intake Seat .025" Oversize	2
5	NN10045	Cover - Valve Compartment	2	26	82-0140	Guide - Exhaust Valve	2
6	82-0260	Gasket - Valve Cover	2	*	82-0150	Guide - Intake Valve	2
7	57-9690	Plug - Expansion	1	27	57-8250	Spring - Valve	4
8	82-0270	Seal - Intake Valve	2	28	82-0250	Lock - Valve Spring	8
9	82-0130	Gasket - Cylinder Hea	2	29	57-8450	Tappet - Valve STD	4
10	82-0210	Cylinder Head	2	*	59-0260	Tappet - Valve .005	4
11	82-1480	Screw - Round Hd	1	30	57-8270	Rotator - Valve	2
12	57-8050	Bearing - Crankshaft , Rear STD	1	31	82-1380	Bolt	2
*	59-0020	Bearing - Crankshaft, Rear .002 Under	1	32	82-0530	Clamp - Breather Tube	1
*	57-8060	Bearing - Crankshaft, Rear .010 Under	1	33	82-0560	Screen - Breather Tube	2
*	59-0030	Bearing - Crankshaft, Rear .020 Under	1	34	82-0570	Seal - Breather	1
*	59-0040	Bearing - Crankshaft, Rear .030 Under	1	36	92-0928	Mtg. Stud - Cylinder Hd (Install 4 Bottom Holes LH, RH Hd)	8
13	57-8160	Washer - Crankshaft Bearing, Thrust	2	*	92-0929	Mtg. Stud - Cylinder Hd (2 Top Holes LH, RH Hd)	4
14	57-8010	Gasket - Bearing Plate	1	*	92-0932	Mtg. Stud - Cylinder Hd (4 Middle Holes LH, RH Hd)	8
15	82-0020	Plate - Bearing, STD. Rear	1	37	57-8020	Bearing - Flanged Sleeve STD	1
16	57-8000	Bearing - Camshaft	2	*	57-9360	Bearing - Flanged Sleeve .002 Under	1
17	57-9590	Seal - Oil Crankshaft	1	*	57-8030	Bearing - Flanged Sleeve .010 Under	1
18	59-0730	Pin - Bearing Stop	4	*	57-9800	Bearing - Flanged Sleeve .020 Under	1
19	59-0880	Bolt	5	*	59-0010	Bearing - Flanged Sleeve .030 Under	1
20	57-9740	Washer - Flat, Copper	2	38	57-8170	Shim - Crankshaft Thrust .005	A/R
21	82-0480	Tube - Oil Crankcase	1	39	59-0750	Pin - Gearcase Alignment	2
22	82-0220	Valve - Intake	2	40	82-0040	Nut	20
23	82-0230	Valve - Exhaust	2	41	3247-4	Screw	2
24	82-0080	Insert - Exhaust Seat STD	2	42	82-1310	Washer - Lock	5
*	82-0090	Insert - Exhaust Seat. .002" Oversize	2	43	82-0240	Cap - Exhaust Valve	2
*	82-0100	Insert - Exhaust Seat .005" Oversize	2	44	82-1300	Washer - Flat	20
*	82-0110	Insert - Exhaust Seat .010" Oversize	2	45	82-1650	Washer - Lock	24
*	82-0120	Insert - Exhaust Seat .025" .025" Oversize	2	47	NN10923	Kit - Gasket, Carbon Removal	1
25	82-0160	Insert - Intake Seat STD	2	48	82-0070	Washer	2
*	82-0180	Insert - Intake Seat					

*Not Illustrated



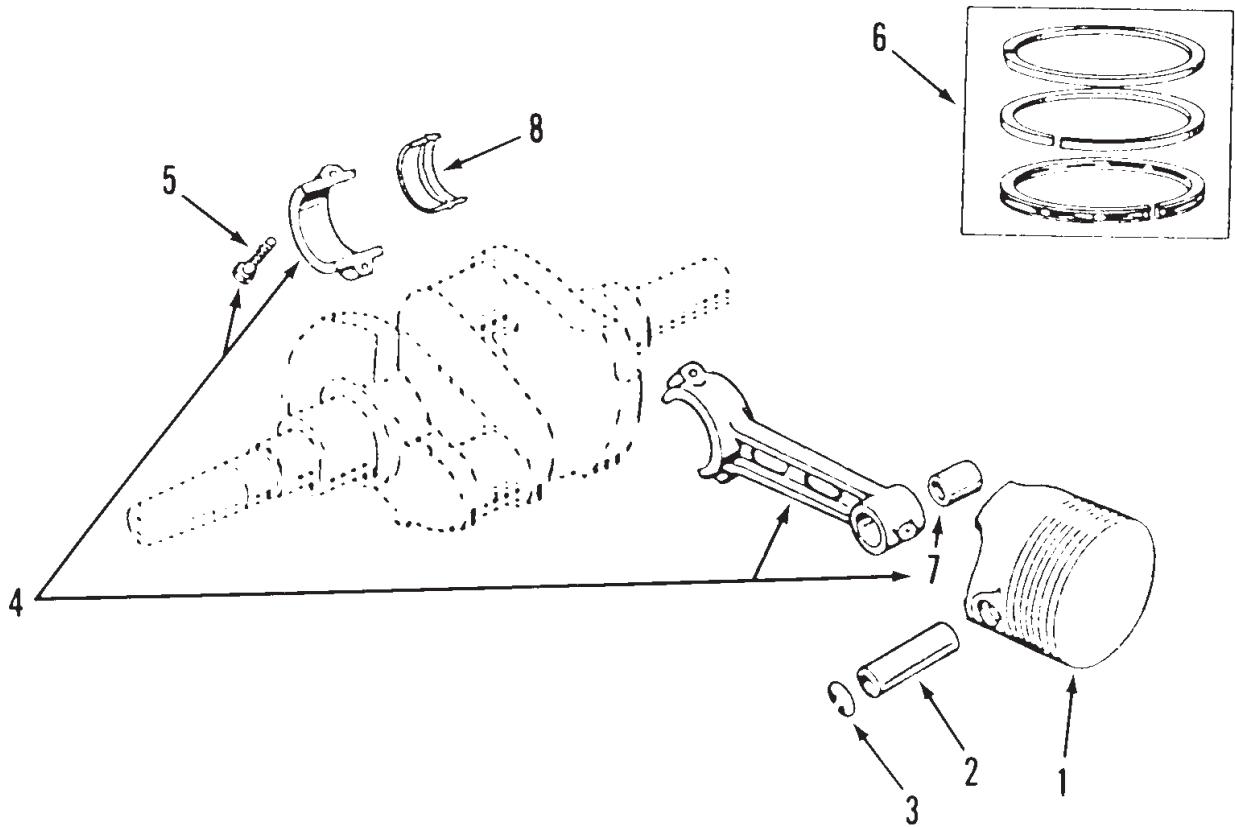
C-1806

CRANKSHAFT, CAMSHAFT AND FLYWHEEL

Ref. No.	Part No.	Description	No. Used
1	82-0880	Camshaft (Incl. Center Pin)	1
2	59-0400	Pin - Camshaft	1
3	57-9660	Key - Camshaft Gear	1
4	57-8230	Washer - Thrust	1
5	57-8210	Gear - Camshaft (Incl. Plate & Spacer)	1
6	57-9640	Ball - Governor Fly	5
7	59-0450	Cup - Governor	1
8	57-9090	Ring - Retaining	9
9	57-9130	Hub - Governor Cup	1
11	57-8150	Bolt - Special	1
12	82-1320	Washer - Flat	1
13	59-0810	Washer - Flat	1

Ref. No.	Part No.	Description	No. Used
14	71-6340	Screw	6
15	59-1120	Bolt	4
16	79-6440	Guard - Flywheel	1
17	57-8180	Ring - Gear	1
18	82-0610	Flywheel (Incl. Ring - Gear)	1
19	NN10026	Crankshaft (Incl. Keys)	1
20	57-9710	Ring - Retaining	1
21	57-8140	Washer - Gear Retaining	1
22	92-0941	Gear - Crankshaft	1
23	71-6190	Key - Flywheel	1
24	57-9660	Key - Crankshaft Gear	1
25	82-1160	Key - Crankshaft Stub	1
26	82-1630	Washer - Lock	4

*Not Illustrated



C-1807

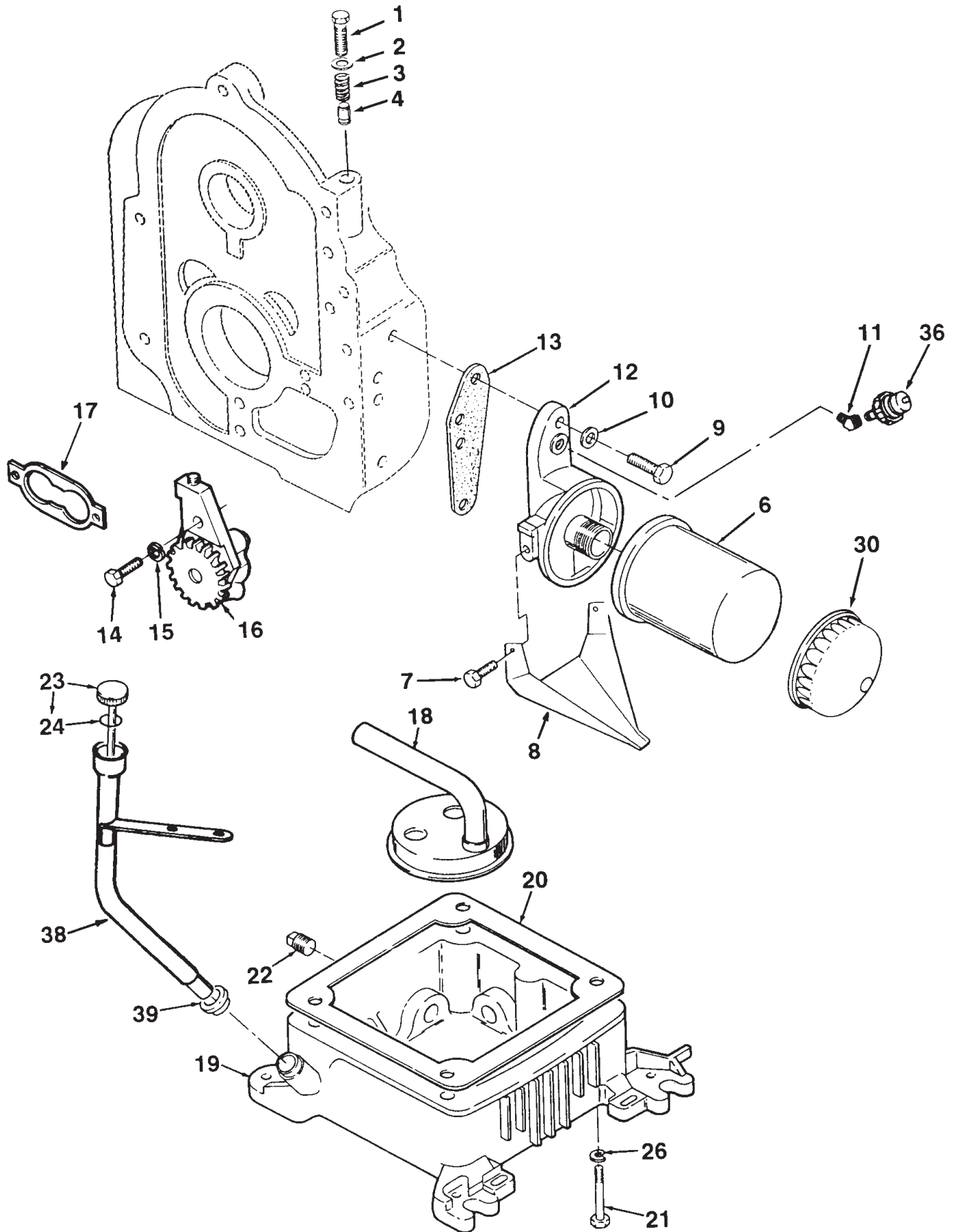
PISTON AND ROD

Ref. No.	Part No.	Description	No. Used
1		Piston & Pin (Incl. Pin & Retaining Ring)	
*	92-9804	Standard	2
*	92-0934	.005 Oversize	2
*	92-0935	.010 Oversize	2
*	92-0936	.020 Oversize	2
*	92-0937	.030 Oversize	2
2	92-0938	Pin - Piston	2
3	92-0933	Ring - Retaining	4
4	82-0470	Rod - Connecting (Incl. Bolts)	2
5	82-1470	Bolt - Rod Cap	4
6	92-0939	Set - Piston Ring (Std)	2
*	92-0940	.005 Oversize	2
*		.010 Oversize	2
*		.020 Oversize	2
*		.030 Oversize	2

Ref. No.	Part No.	Description	No. Used
7	82-0410	Bushing - Piston Ring	2
8		Bearing - Connecting Rod, Half	
*	82-0420	Standard	4
*	82-0430	.002 Undersize	4
*	82-0440	.010 Undersize	4
*	82-0450	.020 Undersize	4
*	82-0460	.030 Undersize	4

*Not Illustrated

OIL SYSTEM

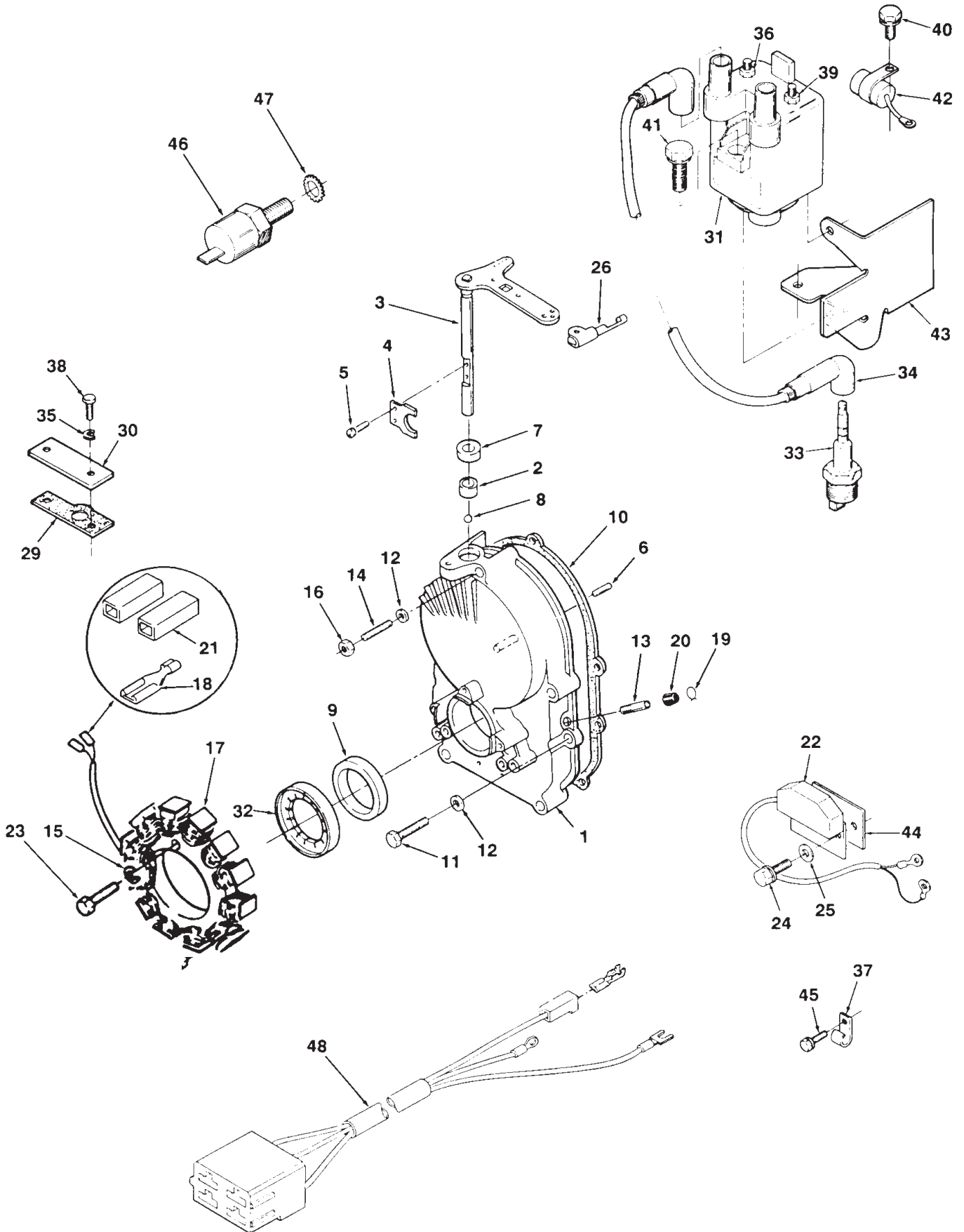


OIL SYSTEM

Ref. No.	Part No.	Description	No. Used	Ref. No.	Part No.	Description	No. Used
1	59-1160	Bolt	1	17	57-8460	Kit - Oil Pump Gasket	1
2	57-9760	Washer- Bypass Valve Flat	1	18	92-0944	Cup - Oil Pump Intake	1
3	59-0280	Spring - Bypass Valve	1	19	92-0942	Base - Oil (Incl. Plugs)	1
4	57-8470	Valve - Plunger, Bypass	1	20	57-8090	Gasket - Oil Base	1
6	57-8530	Filter - Oil	1	21	323-25	Screw	4
7	82-1510	Screw - Cap Hex. Hd.	2	22	92-0943	Plug - Drain	1
8	82-0510	Drain - Oil	1	23	82-0590	Oil Fill Cap & Indicator (Incl. O-Ring)	1
9	NN10373	Bolt	2	24	57-9610	O-Ring - Oil Fill Cap	1
10	57-9750	Washer - Flat, Copper	2	26	82-1310	Washer - Flat	4
11	59-0640	Elbow - Street 45_	1	30	NN10775	Wrench - Oil Filter	1
12	82-0500	Adapter - Oil Filter	1	36	NN10520	Switch - Oil Pressure	1
13	79-6470	Gasket - Adapter	1	38	92-0947	Tube - Oil Fill Spec.	1
14	82-1370	Bolt	1	39	71-6170	Seal	1
15	82-1340	Washer - Lock, Spring	2				
16	57-8480	Pump - Oil	1				

*Not Illustrated

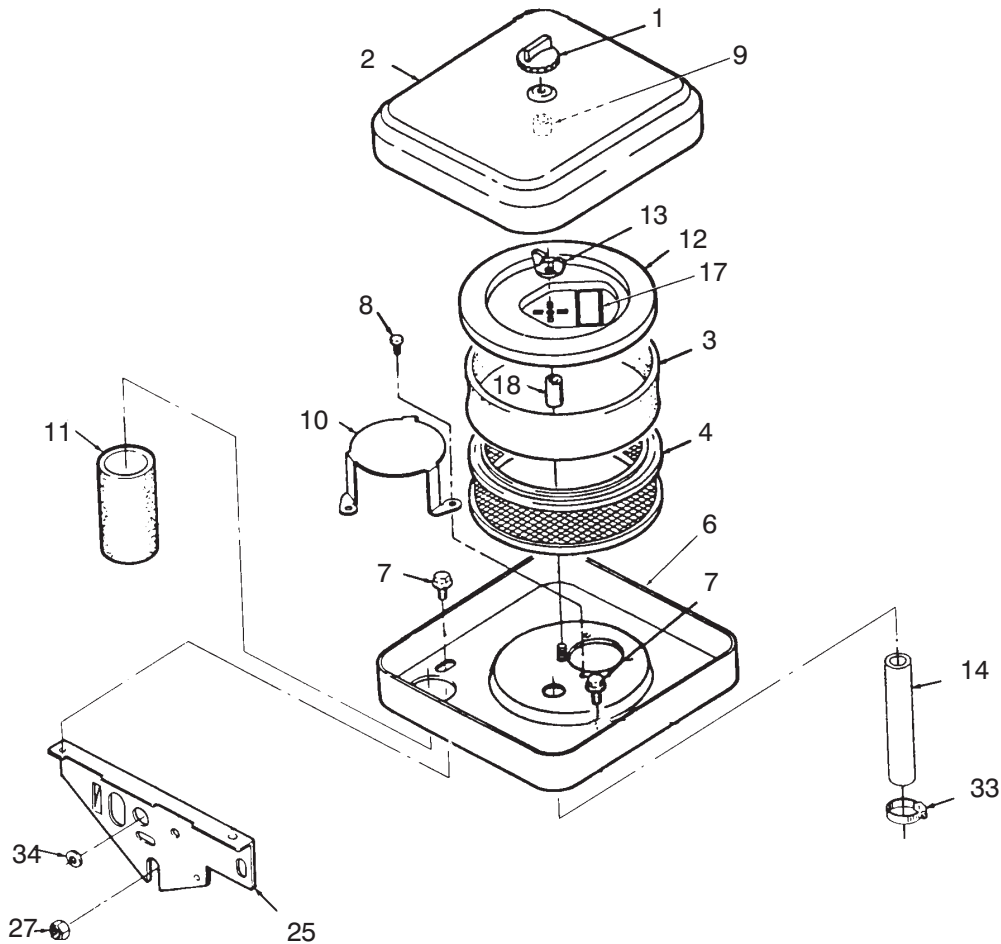
GEARCASE AND IGNITION CONTROLS



GEARCASE AND IGNITION CONTROLS

Ref. No.	Part No.	Description	No. Used	Ref. No.	Part No.	Description	No. Used
1	57-8120	Kit – Gearcase (Incl. Ref.#2 thru 9)	1	22	71-6380	Control – Ignition	1
2	57-9650	Bearing – Governor Shaft	1	23	82-1500	Screw – Machine, Hex. Hd.	3
3	59-0440	Governor Shaft & Arm – Chromed	1	24	NN10394	Screw – Hex Washer Hd	2
4	59-0420	Yoke – Governor Shaft	1	25	82-1660	Washer – Lock	2
5	59-0950	Screw – Machine, Pan Hd	2	26	57-9730	Clip – Retaining	1
6	59-0740	Pin – Dowel, Governor Cup Stop	1	29	79-6490	Gasket – Plate	1
7	57-9570	Seal – Governor Shaft Oil	1	30	71-5990	Cover – Ignition Plunger	1
8	57-9630	Bearing – Ball, Governor Shaft	1	31	71-6000	Coil Incl. Nuts	1
9	57-9580	Seal – Crankshaft Oil	1	32	71-6010	Rotor – Ignition	1
10	NN10895	Gasket – Gearcase Mounting	1	33	57-9340	Plug – Spark	2
11	NN10545	Bolt	4	34	NN10253	Cable – Spark Plug 9”	1
12	57-9750	Washer – Flat, Copper	5	*	71-6020	Cable – Spark Plug 18”	1
13	59-0360	Tube – Vacuum Port	1	35	82-1340	Washer – Lock	2
14	59-0790	Stud – Gear Cover	1	36	71-6440	Nut – Hex Flange	1
15	3253-2	Washer – Lock	3	37	71-6220	Clamp – Wire	1
16	59-1130	Nut	1	38	82-1360	Screw – Hex. Hd. Cap	1
17	92-0967	Stator with Terminals	1	39	71-6430	Nut – Hex Flange	1
18	59-0590	Terminal – Stator Leads	3	40	59-0970	Screw – Hex. Hd.	1
19	57-9550	Clamp – Vacuum Port	1	41	71-6460	Screw – Hex Washer Hd	2
20	59-0370	Cap – Vacuum Port	1	42	59-1180	Capacitor	1
21	82-1000	Kit – Terminal Connector	1	43	82-0920	Bracket – Ignition Coil	1
				44	71-6410	Insulator – Ignition Module	1
				45	NN10545	Screw – Hex. Hd. Cap	1
				46	NN10274	Switch – Temp. Cut-Off	1
				47	NN10924	Washer – Lock	1
				48	92-0960	Harness – Wire	1

*Not Illustrated

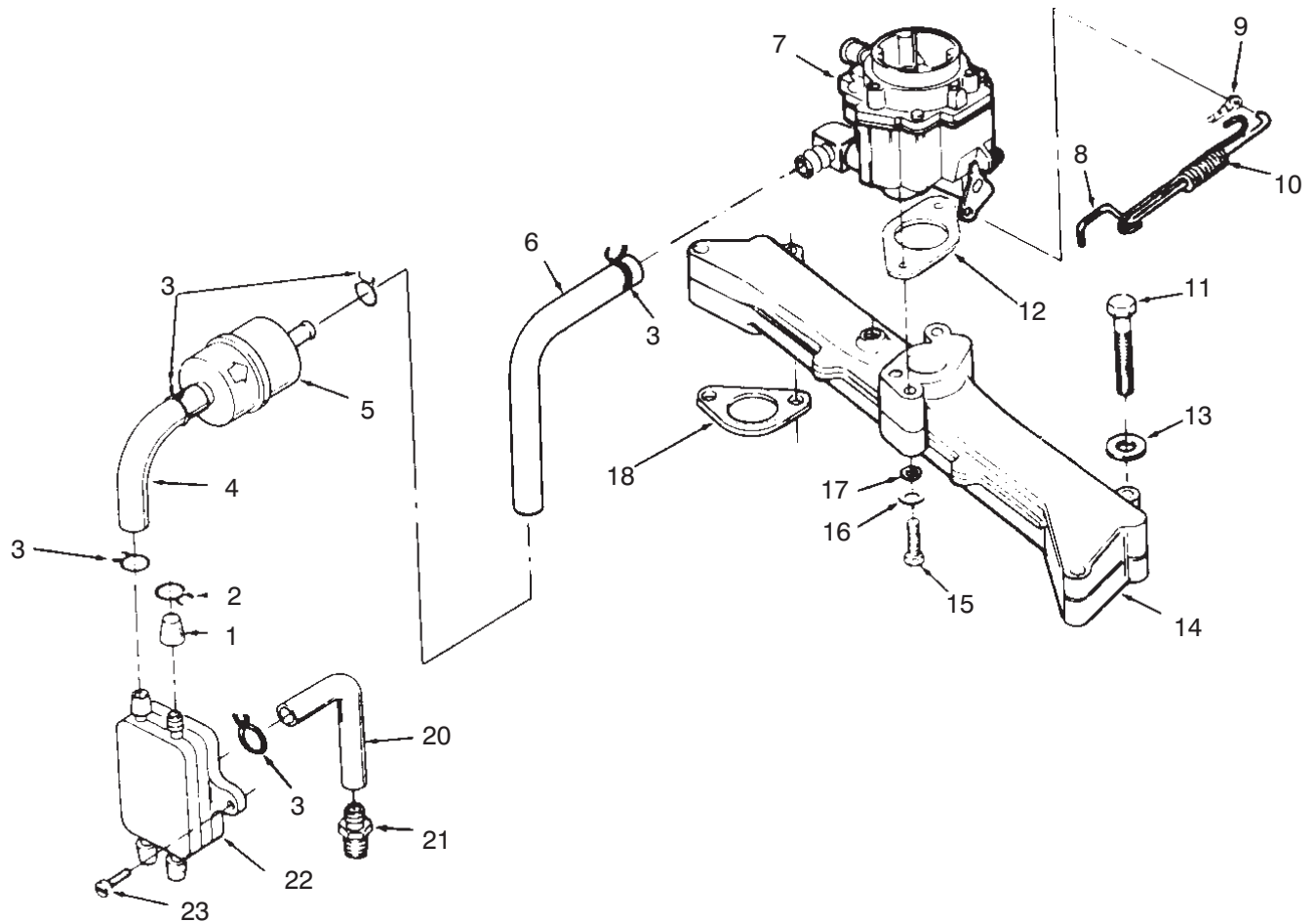


C-1810

AIR CLEANER

Ref. No.	Part No.	Description	No. Used	Ref. No.	Part No.	Description	No. Used
1	79-6350	Knob	1	12	82-0650	Cover - Element	1
2	82-0690	Cover - Air Cleaner	1	13	92-0913	Nut - Wing	1
3	82-0670	Foam Element - Air Cleaner	1	14	92-0945	Tube - Crankcase Breather	1
4	82-0660	Element - Air Cleaner	1	17	82-0010	Decal - Air Cleaner Maintenance	1
6	NN10926	Housing - Air Cleaner	1	18	82-0980	Spacer	1
7	82-1550	Screw - Hex Washer Hd	2	25	82-0720	Support - Air Cleaner	1
8	92-0915	Screw - Machine, Hex. Hd.	3	27	82-1690	Nut - Hex Washer Hd	2
9	82-1550	Spacer - Cover	1	33	82-1090	Clamp - Breather Hose	2
10	92-0946	Plate - Air Deflector	1	34	71-6140	Grommet - Rubber	1
11	82-0700	Tube - Air Intake	1				

*Not Illustrated



C-1811

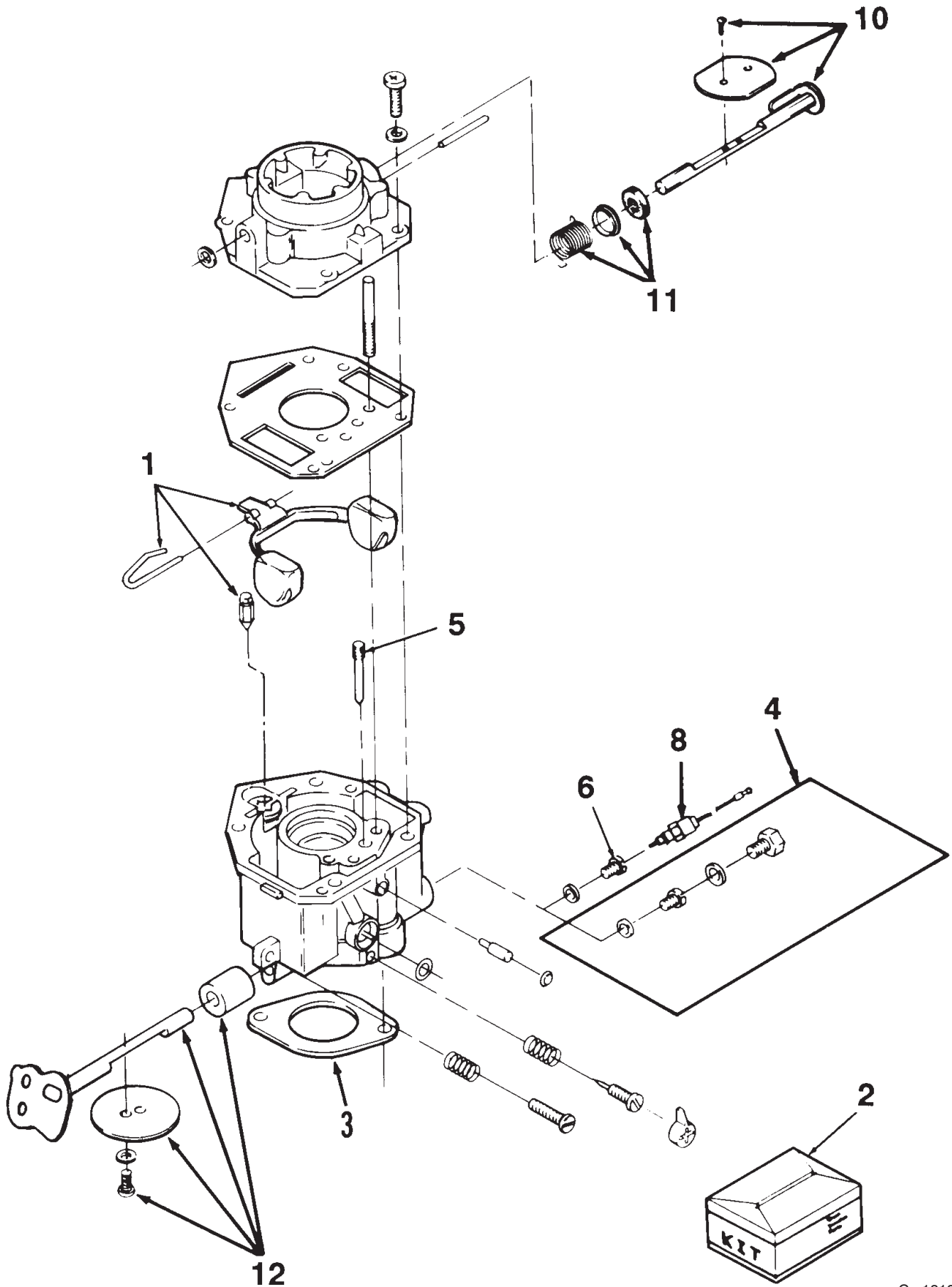
CARBURETOR, INTAKE MANIFOLD & FUEL PUMP

Ref. No.	Part No.	Description	No. Used
1	59-0370	Cap - Fuel Outlet	1
2	57-9550	Clamp - Hose	1
3	82-1080	Clamp - Wire	6
4	71-6120	Hose	1
5	71-5960	Filter - Fuel	1
6	82-1110	Hose - Fuel	1
7	82-0770	Carburetor	1
8	NN10928	Rod - Governor Control	1
9	57-9700	Clip - Retaining	1
10	NN10877	Spring - Governor Rod	1
11	323-14	Screw - Hex. Hd. Cap	4
12	82-0850	Gasket - Carburetor	1

Ref. No.	Part No.	Description	No. Used
13	82-1310	Washer - Flat	4
14	82-0870	Manifold - Intake	1
15	NN10927	Screw - Hex. Hd. Cap	2
16	82-1350	Washer - Flat	2
17	82-1340	Washer	2
18	82-0860	Gasket - Manifold to Block	2
20	71-6100	Hose - Vacuum	1
21	82-1070	Connector - Hose	1
22	NN10842	Pump - Fuel (Incl. Ref. #1 & 2)	1
23	NN10403	Screw	1

*Not Illustrated

CARBURETOR COMPONENTS

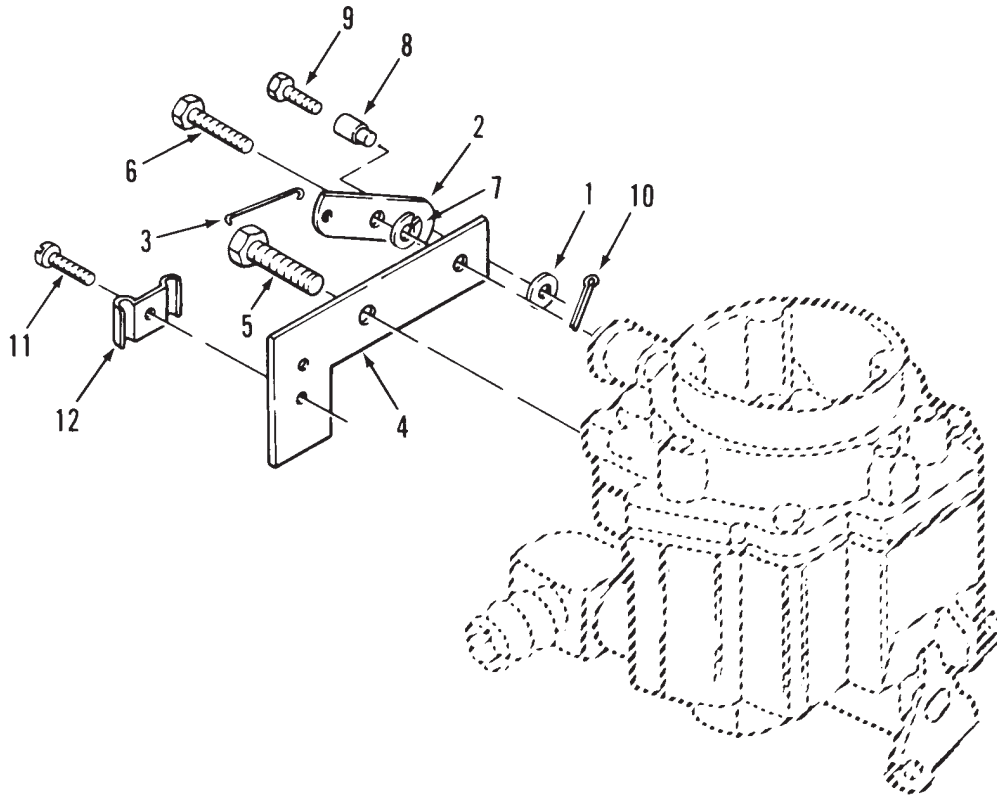


CARBURETOR COMPONENTS

Ref. No.	Part No.	Description	No. Used
1	62-2800	Kit – Float (Incl. Float, Pin, & Valve)	1
2	82-0780	Kit – Repair (Incl. Screw & Plug Package, Gasket Package, Float Valve, Idle Adjustment Needle & Spring, Mounting Gaskets, & Idle Limit Cap)	1
3	82-0850	Gasket – Carburetor	1
4	82-0740	Jet – Power, High Altitude	1
5	82-0750	Jet – Idle	1
6	82-0790	Jet – Power	1

Ref. No.	Part No.	Description	No. Used
8	82-0800	Solenoid – Fuel Cut-Off (Incl. Gasket)	1
10	72-3860	Kit – Choke Shaft (Incl. Choke Valve, Valve Set Screw, & Air Filter)	1
11	72-3870	Kit – Choke Lever (Incl. Choke Lever Ring, Choke Spring, & Choke Collar)	1
12	82-0810	Kit – Throttle Shaft (Incl. Valve Set Screw, Air Filter, & Throttle Valve)	1

*Not Illustrated



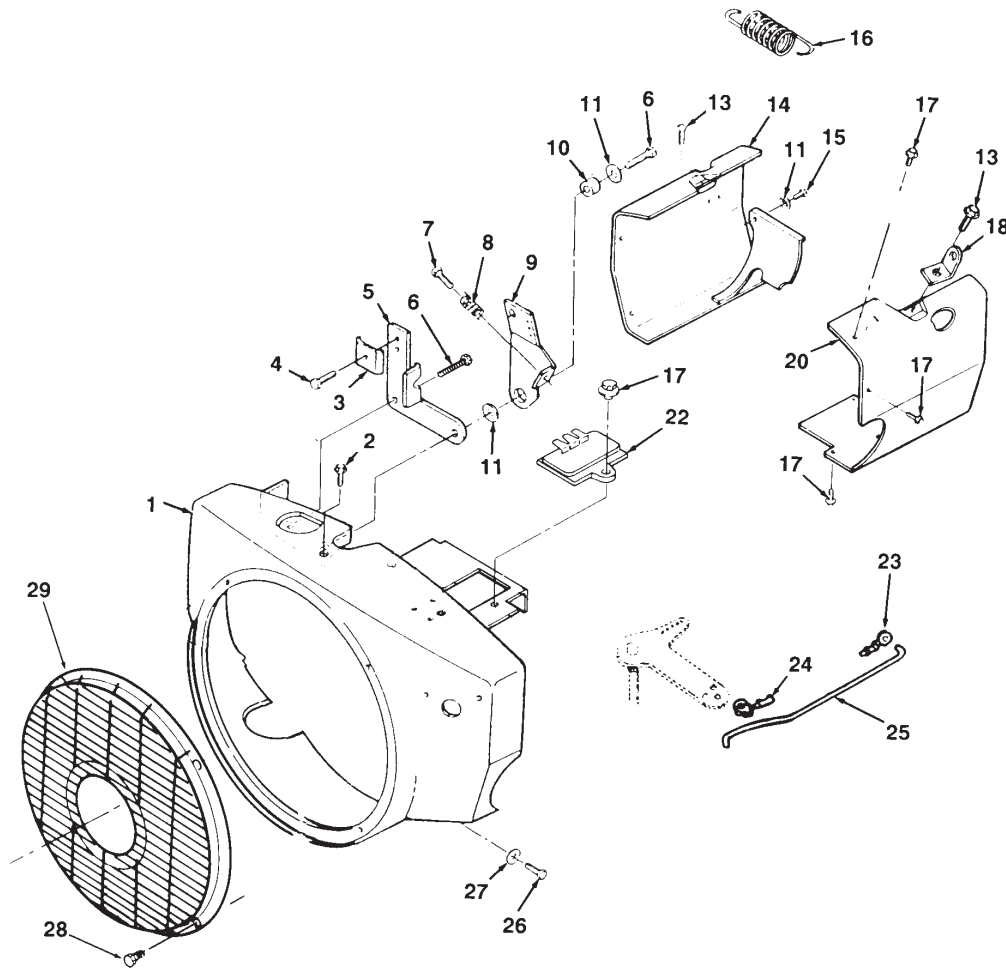
C-1813

CHOKE LINKAGE

Ref. No.	Part No.	Description	No. Used
1	59-0850	Washer - Flat	1
2	59-0460	Lever - Choke	1
3	57-9180	Link - Choke	1
4	59-0470	Bracket - Choke Cable	1
5	72-3880	Screw - Washer Hd Cap	1
6	59-1020	Screw - Shoulder	1

Ref. No.	Part No.	Description	No. Used
7	82-1660	Washer - Lock	1
8	57-9170	Swivel - Choke Lever	1
9	72-3890	Screw - Machine	1
10	59-0720	Pin - Cotter	1
11	72-3900	Screw - Washer Hd	1
12	57-9190	Clip - Choke Cable	1

*Not Illustrated

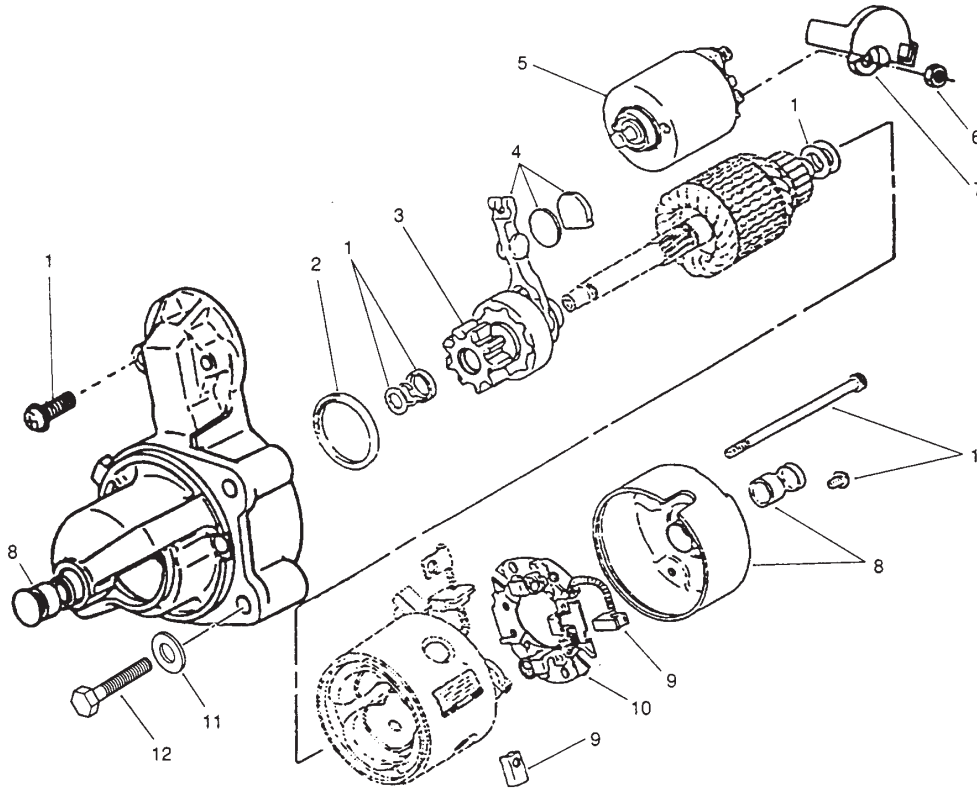


C-1814

BLOWER HOUSING ASSEMBLY

Ref. No.	Part No.	Description	No. Used	Ref. No.	Part No.	Description	No. Used
1	92-0948	Housing - Blower	1	15	59-0980	Screw - Hex Washer Hd	2
2	59-1100	Screw - Hex Flange Hd	2	16	57-9100	Spring - Extension	1
3	57-9190	Clamp - Cable	1	17	59-1080	Screw - Hex Washer Hd	5
4	72-3900	Screw - Hex. Hd.	1	18	71-6080	Bracket - Lifting	2
5	57-9150	Bracket - Cable	1	20	92-0950	Housing - Air R.H.	1
6	59-1010	Screw - Hex. Hd. Cap	2	22	57-9430	Regulator - Voltage	1
7	59-1030	Screw - Hex. Hd. Cap	1	23	57-9700	Clip - Retaining	1
8	59-0430	Spring - Compression	1	24	57-9730	Clip - Retaining	1
9	57-9140	Arm - Governor Control	1	25	NN10928	Rod - Governor Control	1
10	57-9120	Bushing - Control Arm	1	26	NN10931	Screw - Tapping	3
11	59-0830	Washer - Flat	4	27	59-0820	Washer - Flat	4
13	82-1600	Screw - Hex Washer Hd	2	28	82-1590	Screw - Pan Hd	4
14	92-0949	Housing - Air L.H.	1	29	82-0620	Guard	1

*Not Illustrated

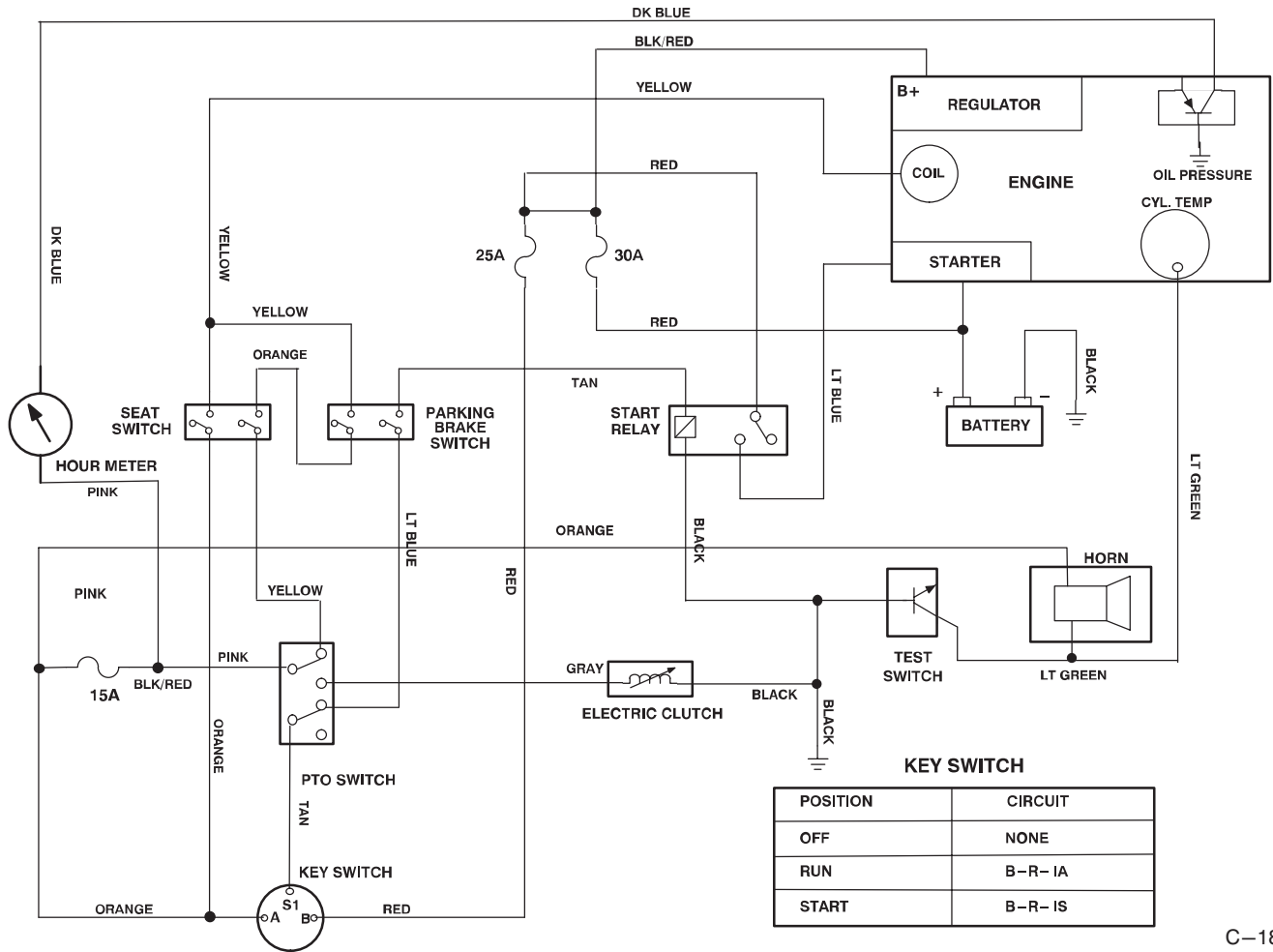


C-1815

STARTER

Ref. No.	Part No.	Description	No. Used
1	62-2760	Kit - Hardware, Starter (Incl. Solenoid Screws, Brush Holder Screws, Thru Bolts, Shims, Pinion Stop Collar, & Pinion Retaining Rings)	1
2	NN10886	Seal - Dust, Starter	1
3	72-3940	Kit - Clutch, Starter	1
4	62-2770	Kit - Shift Lever	1
5	72-3930	Solenoid - Starter	1
6	82-1730	Nut - Hex, Starter	1
7	NN10930	Cap - Starter, Starter	1

Ref. No.	Part No.	Description	No. Used
8	62-2730	Kit - Bushing, Starter (Incl. Rear Cap, Front & Rear Bushings)	1
9	62-2740	Kit - Brush, Starter (Incl. Ref. #10)	1
10		Holder - Brush, Starter	1
11	57-9770	Washer - Flat	2
12	322-22	Screw - Hex. Hd.	2
13	NN10929	Kit - Mounting Bracket	1
14	57-9770	Washer - Flat	2
*	62-2710	Starter - Complete	1



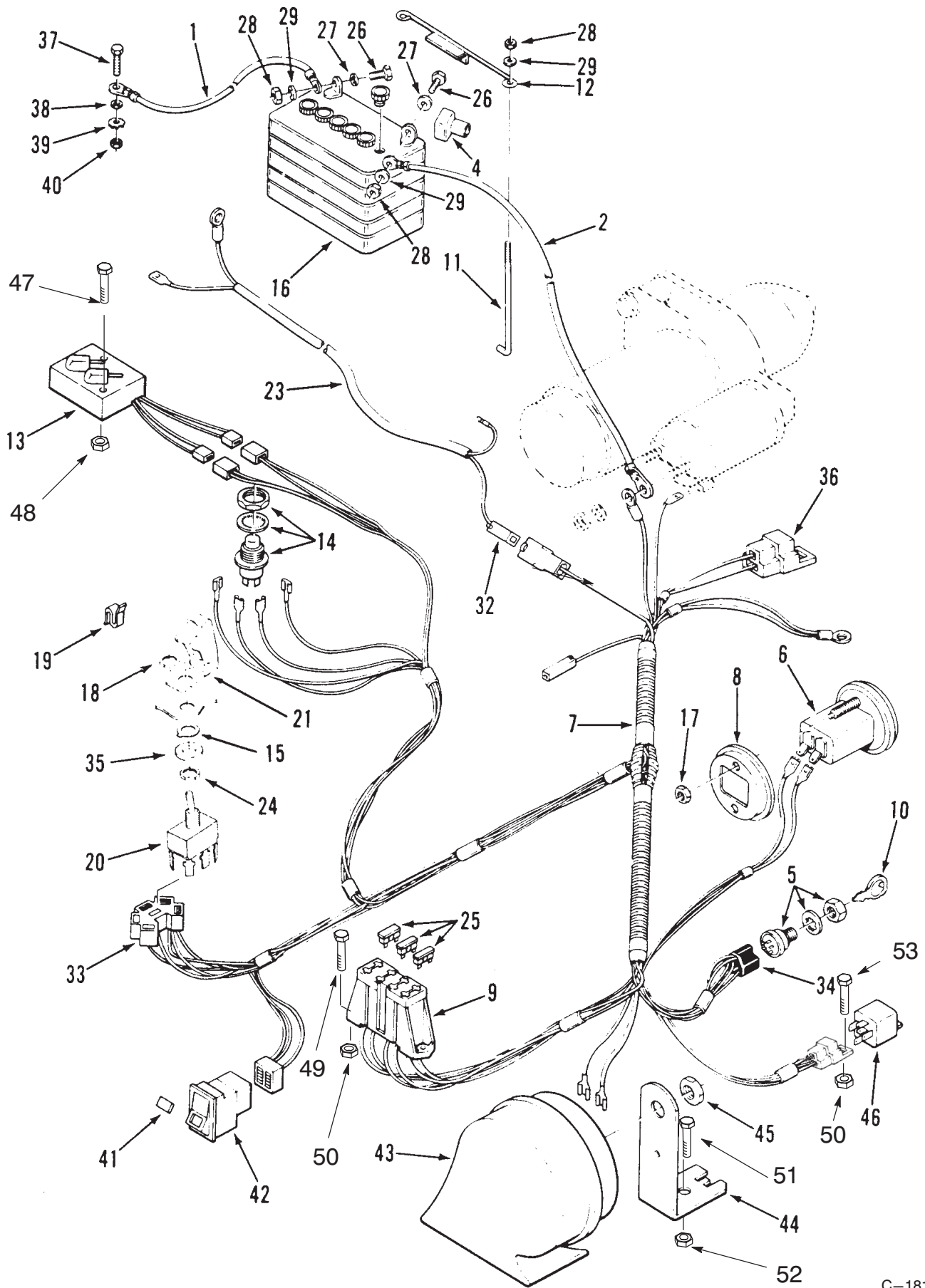
C-1816

ELECTRICAL SCHEMATIC

Ref. No.	Part No.	Description	No. Used
*	92-9810	Wire Harness	1

Ref. No.	Part No.	Description	No. Used

ELECTRICAL SYSTEM

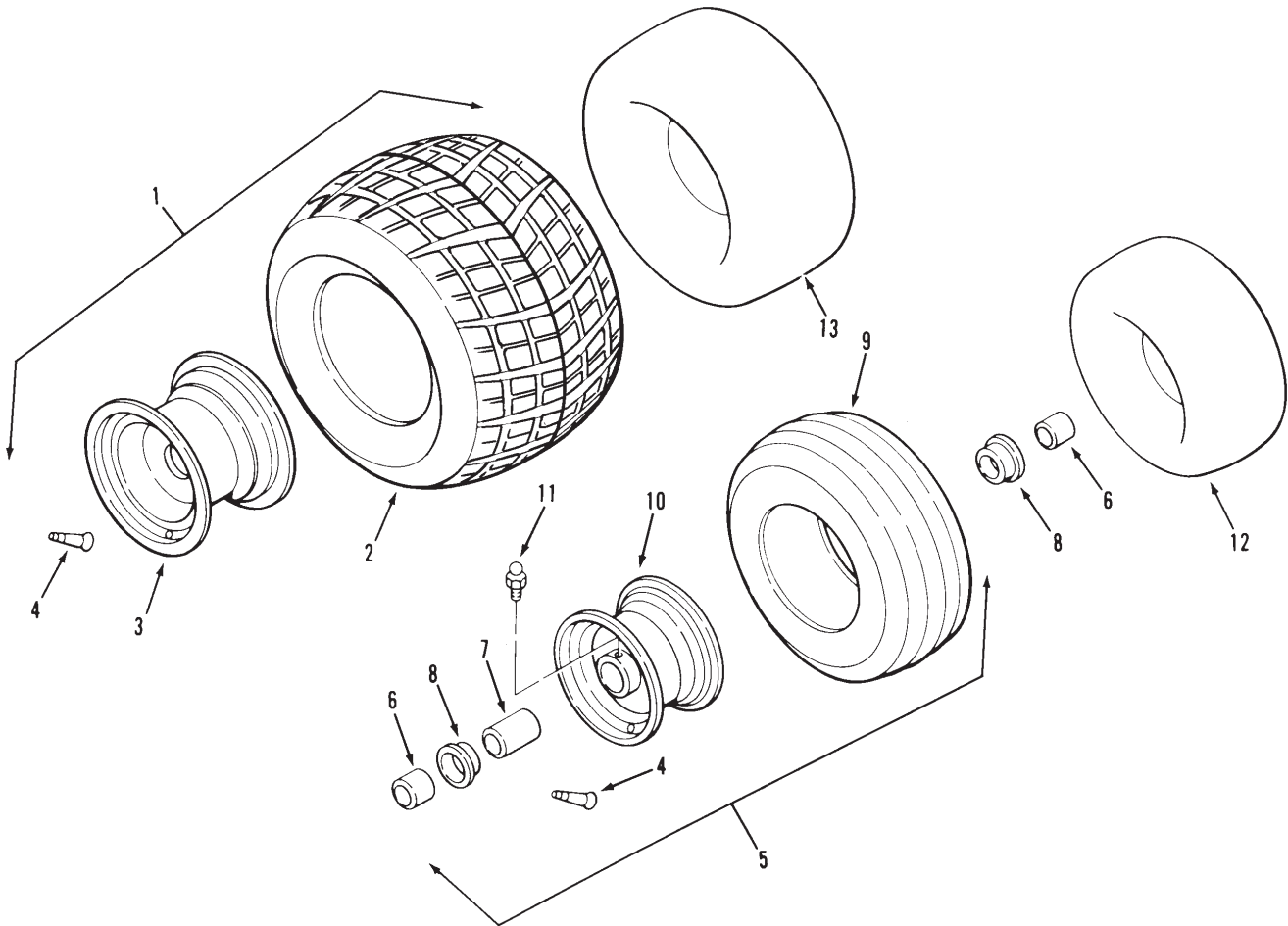


C-1817

ELECTRICAL SYSTEM

Ref. No.	Part No.	Description	No. Used	Ref. No.	Part No.	Description	No. Used
1	111078	Cable – Battery to Ground	1	26	321-4	Bolt	2
2	115023	Solenoid – Battery to Starter	1	27	3256-22	Washer	2
4	109553	Boot – Terminal	1	28	32103-22	Nut Wing	2
5	103990	Switch – Ignition (Incl. Nut 101884 & Screw 103990)	1	29	3253-3	Washer – Lock	2
6	78-0020	Hourmeter (Incl. Ref. # 8)	1	32	NN10282	Connector	1
7	92-9810	Harness – Wiring (Incl. Ref.#9, 33, & 34)	1	33		Connector – PTO Switch	1
8	78-3320	Bracket – Gauge Mounting	1	34	105302	Connector – Ignition Switch	1
9	109117	Block – Fuse	1	35	920242	Spacer	1
10	62-7770	Key	1	36	109357	Connector – Electric Clutch	1
11	113969	Hook	2	37	321-4	Bolt	1
12	113010	Hold Down – Battery	1	38	3256-22	Washer	1
13	116237	Switch – Parking Brake	1	39	3253-3	Washer – Lock	1
14	116194	Switch – Seat	1	40	3217-5	Nut	3
15	102950	Washer – Tab	1	41	116753	Lens – Engine Temp.	1
16	115877	Battery	1	42	116752	Switch – Test (Incl. Ref.#41)	1
17	3217-27	Nut – Keps	1	43	116749	Horn And Bracket Assembly (Inc. Ref.# 44 & 45)	1
18	113179	Nut – Special	1	44	116755	Bracket – Horn	1
19	519337	Clip – Cable	1	45	3296-65	Nut	1
20	92-9811	Switch – PTO	1	46	48-4700	Relay	1
21	113050	Cover – PTO Switch	1	47	9107964	Screw	2
23	NN10295	Harness – Wiring (Inc. Ref.#32)	1	48	32149-7	Nut	2
24	105805	Nut – Switch	1	49	3290-134	Screw	2
25	109355	Fuse – 15 Amp ATO or ATC	1	50	3296-2	Nut	3
*	109102	Fuse – 25 Amp ATO or ATC	1	51	322-3	Screw	1
*	NN10277	Fuse – 30 Amp ATO or ATC	1	52	3296-29	Nut – Lock	1
				53	32105-2	Screw	1

*Not Illustrated



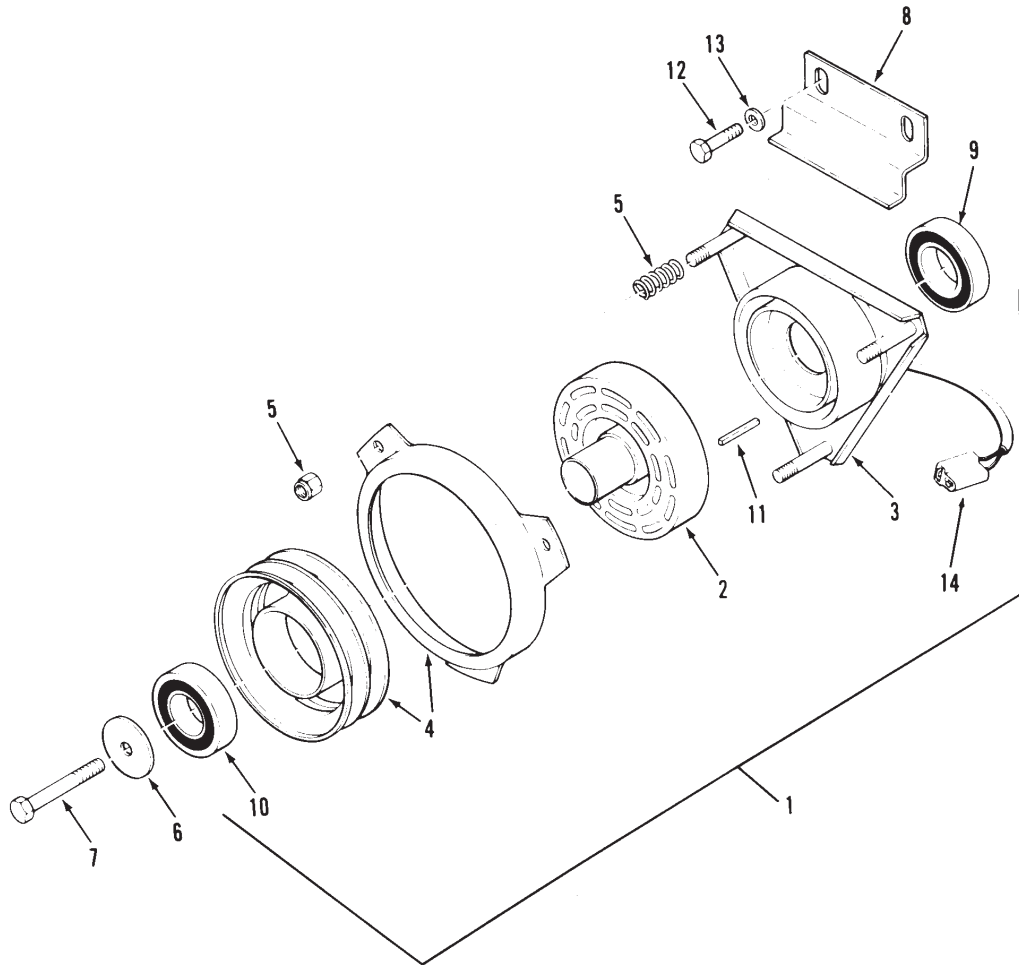
C-1818

WHEELS AND TIRES

Ref. No.	Part No.	Description	No. Used
1		Rear Wheel & Tire - 21 x 11.00-8 (Incl. Ref.s 2, 3, & 4)	1
*		Rear Wheel & Tire, Knobby 21 X 12.00-8 (Incl. Ref.s # 2*, 3*, & 4) Optional	1
2	116973	Tire - Turf Trac, Rear	2
*	88-6530	Tire - Knobby, Rear	2
3	117006	Wheel - Rear, Silver	2
*	111917	Wheel - Rear	2
4	5108	Stem - Valve	4

Ref. No.	Part No.	Description	No. Used
5		Front Wheel & Tire Assy (Incl. Ref.s 7, 8, 9, & 10)	2
6	92-1715	Spacer - Front Wheel	4
7	10204	Spacer - Front Wheel Inner	2
8	10205	Bearing - Front Wheel	4
9	83-3560	Tire - Front 13 x 5.00-6	2
10	111916	Wheel - Front, Silver	2
11	1030	Fitting - Grease	2
12	5712	Tube - Front	2
13	10127	Tube - Rear	2

*Not Illustrated



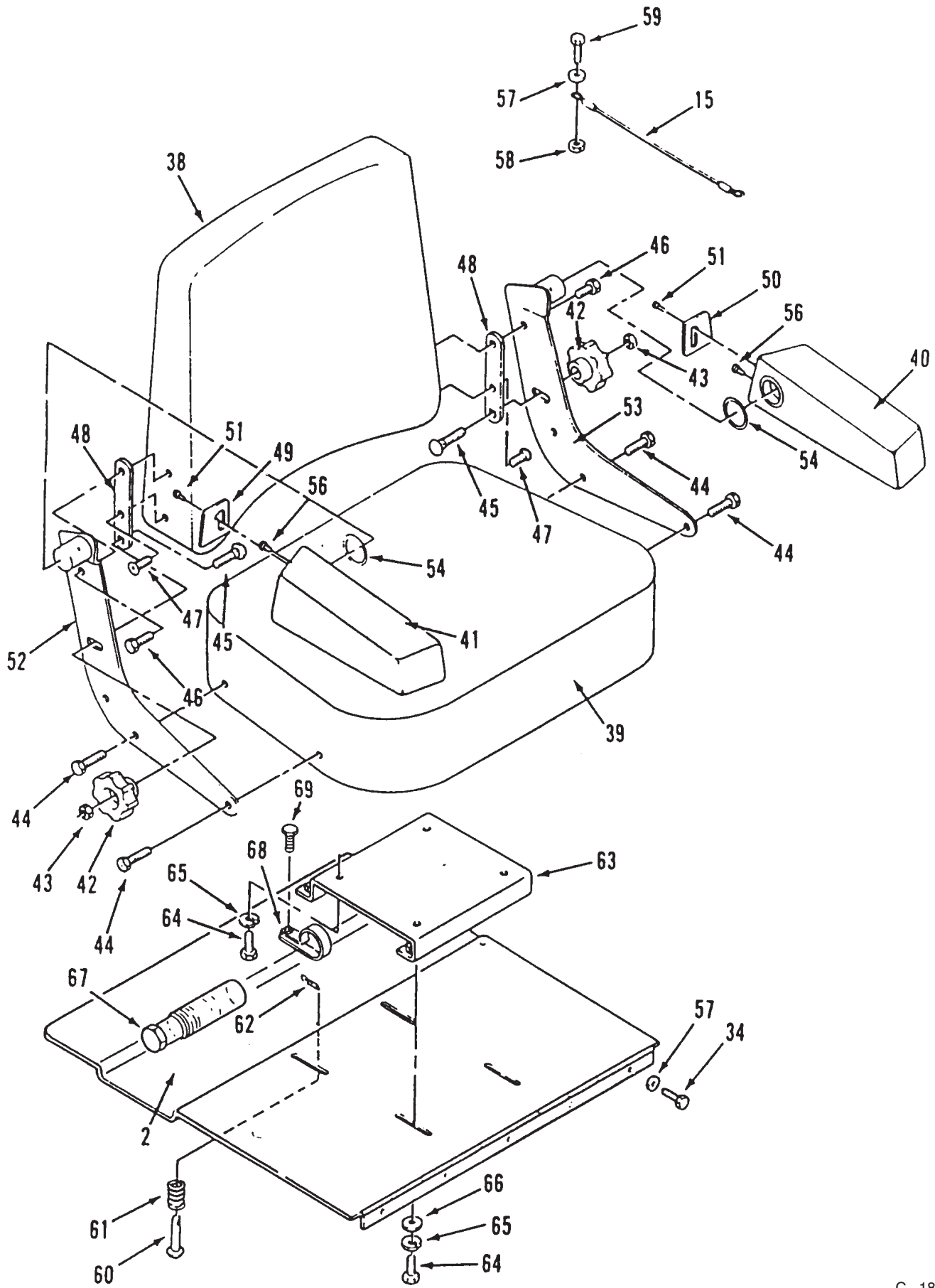
C-1819

P.T.O. ELECTRIC CLUTCH

Ref. No.	Part No.	Description	No. Used
1	93-3160	Electric Clutch - Complete (Incl. Ref.s #2, 3, 4, 5, 9, 10, & 14)	1
2	93-3176	Rotor & Armature Asm (Incl. Ref. #4 & 10)	1
3	115134	Field (Incl. Ref. #9)	1
5	113823	Kit - Spring & Nuts	1
6	113602	Retainer - Bearing	1

Ref. No.	Part No.	Description	No. Used
7	3211-5	Bolt	1
8	113674	Bracket	1
9	115170	Bearing	1
10	114064	Bearing	1
11	1121	Key	1
12	323-4	Bolt	2
13	3256-24	Washer	2
14	110459	Connector	1

SEAT

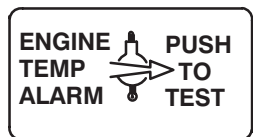
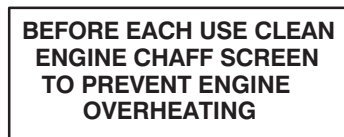
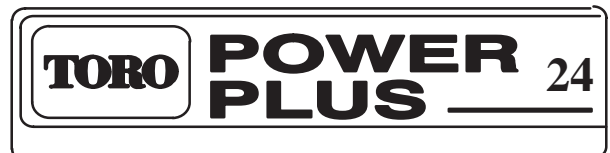
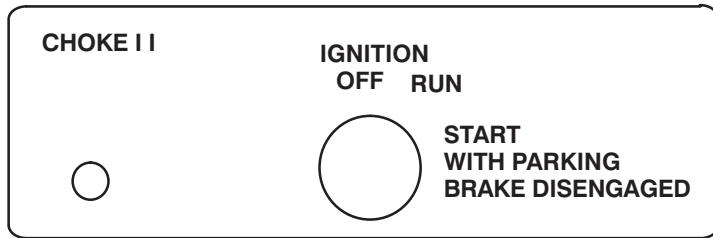
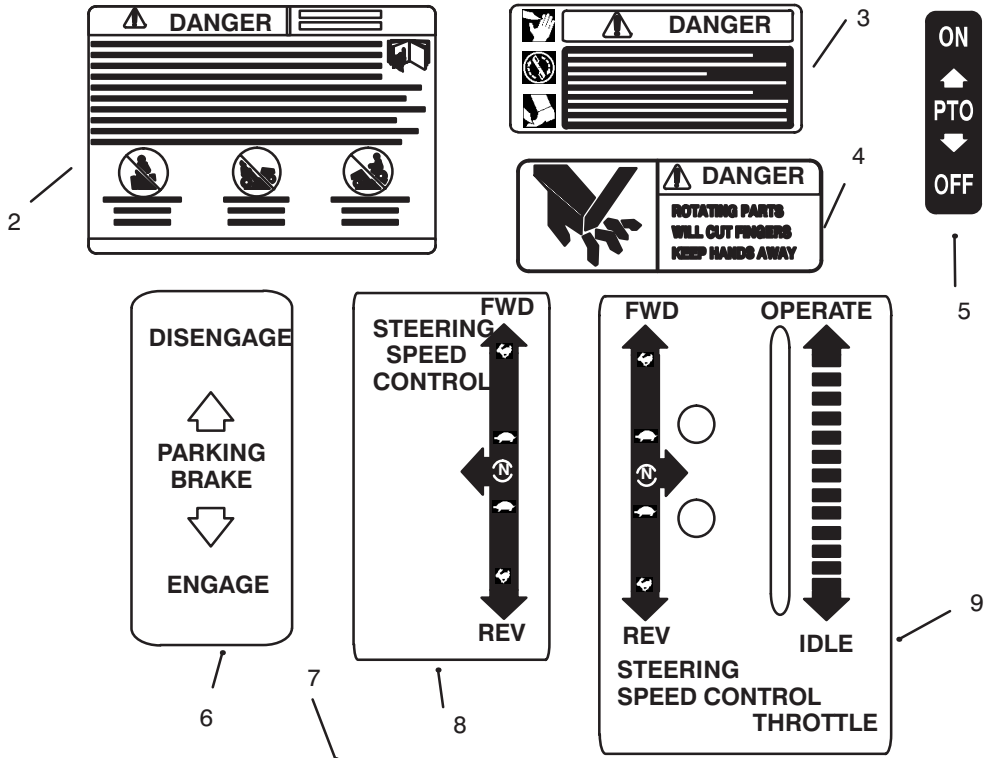


SEAT

Ref. No.	Part No.	Description	No. Used	Ref. No.	Part No.	Description	No. Used
2	92-4075	Bracket - Seat Mounting	1	54	W114	Washer	2
15	115850	Cable - Seat	1	56	911037	Screw	2
34	32144-4	Bolt	5	57	3256-2	Washer	8
38	88-2150	Seat - Back	1	58	3296-42	Nut	2
39	88-2160	Seat - Bottom	1	59	321-4	Bolt	2
40	40103	Arm Rest - LH	1	60	106449	Pin	1
41	40104	Arm Rest - RH	1	61	116195	Spring	1
42	40105	Knob - Lumbar Control	2	62	3272-7	Pin - Cotter	2
43	88-3250	Nut - Lock	2	63	113585	Support - Seat	1
44	325-5	Bolt	4	64	323-4	Bolt	8
45	3231-4	Bolt - Carriage	2	65	3256-21	Washer - Lock	8
46	323-4	Bolt	2	66	3256-24	Washer - Flat	4
47	908849	Screw - Phillips Hd	2	67	74-0720	Tube - Manual	1
48	88-3300	Plate - Lumbar Friction	2	68	2412-120	Clamp - Tube	2
49	40224	Plate - Arm Rest Cover, RH	1	69	32144-1	Screw	2
50	40225	Plate - Arm Rest Cover, LH	1	*	113698	Seat Ass'y (Incl. all Items except #2, 34, 57, & 60 thru 66)	1
51	S102	Screw	2				
52	88-3310	Support - Back, LH	1				
53	40226	Support - Back, RH	1				

*Not Illustrated

DECALS



DECALS

Ref. No.	Part No.	Description	No. Used	Ref. No.	Part No.	Description	No. Used
2	92-2504	Decal - Danger	1	10	92-2505	Decal - Zero Turn RH	1
3	92-2500	Decal - Danger	2	11	115094	Decal - Engine Screen	1
4	88-2790	Decal - Danger	2	12	118570	Decal - Power Plus	1
5	112845	Decal - PTO	1	13	92-2369	Decal - Temperature Alarm	1
6	92-2502	Decal - Parking Brake	1	14	92-2506	Decal - Zero Turn LH	1
7	114574	Decal - Choke - Ignition	1	15	92-2509	Decal - Proline 724-Z	1
8	92-2501	Decal - Speed Control	1	16	76-1340	Decal - Made in USA	1
9	92-2503	Decal - Steering/Throttle	1				

*Not Illustrated

TORO PART NUMBER INDEX

Part No.	Description	Pg. Ref. No. No. Qty.	Part No.	Description	Pg. Ref. No. No. Qty.
1030	Fitting – Grease	36 11 2	111917	Wheel – Rear	36 * 2
1121	Key	37 11 1	111922	Grip – Handle	17 14 1
2844	Washer	3 19 2	112304	Bracket – Chain Tensioner	23 2
2844	Washer	24 4	112304	Bracket – Chain Tensioner	3 28 2
2844	Washer	3 29 4	112589	Cover – Reservoir	7 11 2
2844	Washer	42 2	112590	Body – Reservoir	7 12 2
2844	Washer – Special	9 16 2	112591	Seal – Ring, Sq	7 13 2
5108	Stem – Valve	36 4 4	112593	Ring – External Retaining	7 15 2
5712	Tube – Front	36 12 2	112594	Washer – Control Shaft	7 16 2
6331	Spacer	17 25 2	112595	Button	7 17 2
6392	Link – Master	15 28 2	112596	Seal – Ring, Sq	7 23 2
7059	Clip	17 17 1	112597	Rotor & Balls Assembly	7 24 2
8830	Clip	17 4 2	112599	Rotor & Balls Assembly	7 27 2
8830	Clip	3 22 1	112601	Ring – Retaining	7 7 2
8830	Clip	2 23 3	112602	Bearing – Ball, Input	7 8 2
8830	Clip	36 1	112603	Shaft – Input	7 9 2
9547	Washer – Thrust	2 13 2	112605	Seal – Oil	7 2 2
9548	Washer – Thrust	2 16 2	112606	Kit – Control Shaft	7 1 2
10127	Tube – Rear	36 13 2	112607	Insert – Cam Ring	7 33 2
10204	Spacer – Front Wheel Inner	36 7 2	112608	Pin – Coil	7 32 4
10205	Bearing – Front Wheel	36 8 4	112609	Body – Check Valve	7 31 4
28534	Plug – Pipe	5 5 1	112610	Ball	7 30 4
40103	Arm Rest – LH	39 40 1	112611	Ring – Retaining	7 29 4
40104	Arm Rest – RH	39 41 1	112612	Spring – Piston	7 28 10
40105	Knob – Lumbar Control	39 42 2	112613	Plug Assembly – O–Ring	7 34 2
40224	Plate	39 49 1	112614	O–Ring	7 39 2
40225	Plate	39 50 1	112615	Shaft Assembly – Output	7 43 2
40226	Support – Back, RH	39 53 1	112616	Screw – Socket Hd.	7 41 4
100305	Washer – Friction	17 22 2	112618	Kit – Overhaul Sealing	7 44
100307	Ring – Retaining	15 15 1	112619	Ring Sub–Assembly	7 25 2
100365	Washer – Lock	17 12 2	112620	Body Assembly	7 40 2
102950	Washer – Tab	35 15 1	112625	Kit – Cover	7 14 1
103990	Switch – Ignition	35 5 1	112626	Fitting – Guide Assembly	7 19 2
103995	Washer	13 9 1	112627	O–Ring	7 22 2
104047	Bushing	17 33 2	112628	Bracket & Pins Assembly	7 21 2
104048	Valve Assembly – Fuel	17 39 2	112629	Spring – Dump Valve	7 20 4
104859	Spacer	9 15 2	112630	Pintle Assembly – Used in	7 26 1
105014	Cable – Throttle	17 15 1	112631	O–Ring	7 5 2
105302	Connector – Ignition Switch	35 34 1	112632	Gasket Ass'y ,	7 1
105805	Nut – Switch	35 24 1	112633	Valve – Dump	7 3 2
106449	Pin	39 60 1	112845	Decal – PTO	41 5 1
107675	Washer – Rubber	11 17 2	112941	Nut – Hex, Special	15 17 1
108571	Washer – Spring	13 6 4	112954	Pedal – Foot	15 1 1
108881	Nut	17 21 2	112955	Link – Pivot	15 5 1
109002	Link – Connecting	3 4 2	112956	Arm – Lift Pawl	15 6 1
109002	Link – Connecting	15 2	112957	Lever Arm & Sprocket	15 7 1
109102	Fuse – 25 Amp ATO or ATC	35 * 1	112958	Sprocket – Height Control	15 8 1
109117	Block – Fuse	35 9 1	113010	Hold Down – Battery	35 12 1
109355	Fuse – 15 Amp ATO or ATC	35 25 1	113050	Cover – PTO Switch	35 21 1
109357	Connector – Electric Clutch	35 36 1	113081	Spring – Foot, Short	15 3 1
109553	Boot – Terminal	35 4 1	113081	Spring – Neutral	9 12 4
110459	Connector	37 14 1	113149	Pin	15 9 1
111078	Cable – Battery to Ground	35 1 1	113179	Nut – Special	35 18 1
111357	Clip	11 7 1	113353	Fitting – Grease	16 4
111879	Fitting – Fuel Line	17 36 2	113509	Bushing – Nylon	9 14 8
111887	Sprocket – Idler	3 1 2	113518	Sprocket & Drum #50	13 5 2
111887	Sprocket – Idler	27 2	113529	Axle Hub Bearing – Inner	2 25 2
111891	Pan – Floor	11 14 1	113530	Axle Hub Bearing – Outer	2 1 2
111909	Bracket – Fender, RH Rear	11 5 1	113531	Bearing – Pillow Block	2 4
111910	Bracket – Fender, LH Rear	11 * 1	113531	Bearing – Pillow Block	3 10 4
111911	Bracket – Fender, RH Front	111 1	113567	Shim – Bearing	3 11 X
111912	Bracket – Fender, LH Front	11 * 1	113567	Shim – Bearing	18 X
111916	Wheel – Front, Silver	36 10 2	113568	Transmission – Hydrostatic,	4 21 1

*Not Illustrated

TORO PART NUMBER INDEX (Continued)

Part No.	Description	Pg. Ref. No. No. Qty.	Part No.	Description	Pg. Ref. No. No. Qty.
113569	Transmission — Hydrostatic,	4 11 1	116460	Bolt — Shoulder	9 28 2
113570	Linkage — Drive, Upper	9 18 2	116478	Lever — Parking Brake	13 16 1
113578	U-Joint — Double	4 6 1	116735	Chain — Secondary	3 3 2
113585	Support — Seat	39 63 1	116735	Chain — Secondary	13 2
113602	Retainer — Bearing	37 6 1	116749	Horn And Bracket Assembly	35 43 1
113623	Yoke — Threaded	13 12 2	116752	Switch — Test	35 42 1
113624	Bands — Brake	13 4 2	116753	Lens — Engine Temp.	35 41 1
113632	Spring	9 23 4	116755	Bracket — Horn	35 44 1
113633	Pulley — Flat Idler	2 9 1	116839	Bumper	6 2
113640	Gear Box — "T Peerless	4 15 1	116839	Bumper	3 17 2
113650	Fan— RH Counterclockwise	4 19 1	116888	Frame — Transaxle	3 14 1
113659	Fender — LH	11 11 1	116888	Frame — Transaxle	19 1
113663	Spider — Coupling	4 17 2	116973	Tire — Turf Trac, Rear	36 2 2
113665	Spacer	13 21 1	117006	Wheel — Rear, Silver	36 3 2
113668	Rod Assembly — Brake	13 20 1	117295	Bracket — Gearbox	4 5 1
113671	Jackshaft	1 2	117560	Lever — Steering RH	9 * 1
113671	Jackshaft	3 6 2	117561	Lever — Steering LH	9 2 1
113674	Bracket	37 8 1	117580	Muffler	17 10 1
113675	Bushing — Bronze	9 30 2	118570	Decal — Power Plus	41 12 1
113680	Arm — Hydro Control	9 6 2	519337	Clip — Cable	35 19 1
113684	Sprocket Assembly	15 21 1	740315	Manual — Hydrostatic	7 * 1
113687	Bearing — Flanged	15 22 4	770047A	Housing — T-Drive	5 15 1
113688	Bolt — Eye	9 10 4	772067	Cover	5 7 1
113690	Nut — Coupling Rod	13 2 1	776060A	Shaft — Output	5 11 1
113691	Chain — Primary	3 5 2	776127	Shaft — Input	5 14
113691	Chain — Primary	12 2	778101	Gear — Miter	5 10 1
113693	Control — Choke	17 13 1	778210	Gear — Miter	5 13 1
113697	Bolt — Eye	15 27 2	780034	Bearing — Ball	5 4 4
113698	Seat Ass'y	39 * 1	786029	Cap & Seal Assy — Retainer	5 * 2
113699	Chain — Link, Mower Deck	15 29 2	788018	Ring — Snap	5 9 1
113823	Kit — Spring & Nuts	37 5 1	788019	Ring — Snap	5 16 1
113969	Hook	35 11 2	788028	Cover — Gasket	5 8 1
114064	Bearing	37 10 1	788029	Seal — Oil	5 17 1
114183	Spring — Foot, Long	15 4 1	788030	Gasket — Cap	5 3 2
114294	Clamp — Cross Shaft	15 24 1	788031	Seal — Oil	5 1 2
114295	Sprocket	2 26 1	792025	Screw — Pan Hd.	5 6 4
114497	Spring — Seat	10 4	792026	Screw— Hex. Hd.	5 12 8
114497	Spring — Seat	3 16 4	794381	Head Assy — T-Drive	5 * 1
114574	Decal — Choke — Ignition	41 7 1	908849	Screw — Phillips Hd	39 47 2
114613	Pin — Clevis	15 14 1	909848	Screw — Set	29 4
114661	Pivot — Steering Lever LH	9 31 1	909848	Setscrew	13 10 2
114662	Pivot — Steering Lever RH	9 * 1	911037	Screw	39 56 2
115023	Solenoid — Battery to Starter	35 2 1	911444	Screw — Machine, Hex Hd	9 2
115094	Decal — Engine Screen	41 11 1	915585	Nut — Wing	11 12 2
115101	Bushing	2 10 1	920225	Washer	15 30 2
115102	Pulley — V-Idler	2 8 1	920242	Spacer	35 35 1
115134	Field	37 3 1	920251	Washer	2 14 4
115170	Bearing	37 9 1	937082	Key — Woodruff	9 5 2
115200	Edge — Trim	3 27 1	937218	Key — Hi-Pro	4 1 4
115200	Edge — Trim	40 1	937225	Key — Hi-Pro	4 10 3
115226	Cap	2 21 2	9107964	Screw	35 47 2
115295	Bushing	9 35 1	NN10026	Crankshaft	20 19 1
115793	Rod — Brake LH	13 23 1	NN10045	Cover — Valve	19 5 2
115794	Rod — Brake RH	13 15 1	NN10253	Cable — Spark Plug 9	25 34 1
115850	Cable — Seat	39 15 1	NN10274	Switch — Temp. Cut-Off	25 46 1
115855	Chain — Foot Pedal	15 2 1	NN10277	Fuse — 30 Amp ATO or ATC	35 * 1
115856	Coupler — LJ, .875 x .1875	4 18 2	NN10282	Connector	35 32 1
115857	Coupler — LJ, .670 x .125	4 16 2	NN10295	Harness — Wiring	35 23 1
115877	Battery	35 16 1	NN10373	Bolt	23 9 2
115960	Clip — Dump Valve	4 12 2	NN10394	Screw — Hex Washer Hd	25 24 2
116194	Switch — Seat	35 14 1	NN10403	Screw	27 23 1
116195	Spring	39 61 1	NN10520	Switch — Oil Pressure	23 36 1
116237	Switch — Parking Brake	35 13 1	NN10545	Bolt	25 11 4

*Not Illustrated

TORO PART NUMBER INDEX (Continued)

Part No.	Description	Pg. No.	Ref. No.	Qty.	Part No.	Description	Pg. No.	Ref. No.	Qty.
NN10545	Screw – Hex. Hd. Cap	25	45	1	57-9610	O-Ring – Oil Fill Cap	23	24	1
NN10775	Wrench – Oil Filter	23	30	1	57-9630	Bearing – Ball,	25	8	1
NN10842	Pump – Fuel	27	22	1	57-9640	Ball – Governor Fly	20	6	5
NN10877	Spring – Governor Rod	27	10	1	57-9650	Bearing – Governor Shaft	25	2	1
NN10886	Seal – Dust, Starter	32	2	1	57-9660	Key – Camshaft Gear	20	3	1
NN10895	Gasket – Gearcase	25	10	1	57-9660	Key – Crankshaft Gear	20	24	1
NN10923	Kit – Gasket,	19	47	1	57-9690	Plug – Expansion	19	7	1
NN10924	Washer – Lock	25	47	1	57-9700	Clip – Retaining	27	9	1
NN10926	Housing – Air Cleaner	26	6	1	57-9700	Clip – Retaining	31	23	1
NN10927	Screw – Hex. Hd. Cap	27	15	2	57-9710	Ring – Retaining	20	20	1
NN10928	Rod – Governor Control	27	8	1	57-9730	Clip – Retaining	31	24	1
NN10928	Rod – Governor Control	31	25	1	57-9730	Clip – Retaining	25	26	1
NN10929	Kit – Mounting Bracket	32	13	1	57-9740	Washer – Flat, Copper	19	20	2
NN10930	Cap – Starter, Starter	32	7	1	57-9750	Washer – Flat, Copper	23	10	2
NN10931	Screw – Tapping	31	26	3	57-9750	Washer – Flat, Copper	25	12	5
47-2966	Line – Fuel (5)	17	38	1	57-9760	Washer – Bypass Valve Flat	23	2	1
47-2967	Line – Fuel (29.5)	17	34	2	57-9770	Washer – Flat	32	11	2
48-4700	Relay	35	46	1	57-9770	Washer – Flat	32	14	2
55-3570	Cap – Fuel	17	31	1	57-9800	Bearing – Flanged Sleeve	19	*	1
56-2820	Seal – Oil	7	10	2	59-0010	Bearing – Flanged Sleeve	19	*	1
56-3290	Ring – Retaining	7	6	2	59-0020	Bearing – Crankshaft,	19	*	1
Piston & Pin (Incl. Pin		211			59-0030	Bearing – Crankshaft,	19	*	1
57-8000	Bearing – Camshaft	19	16	2	59-0040	Bearing – Crankshaft,	19	*	1
57-8010	Gasket – Bearing Plate	19	14	1	59-0260	Tappet – Valve .005	19	*	4
57-8020	Bearing – Flanged	19	37	1	59-0280	Spring – Bypass Valve	23	3	1
57-8030	Bearing – Flanged Sleeve	19	*	1	59-0360	Tube – Vacuum Port	25	13	1
57-8050	Bearing – Crankshaft	19	12	1	59-0370	Cap – Vacuum Port	25	20	1
57-8060	Bearing – Crankshaft,	19	*	1	59-0400	Pin – Camshaft	20	2	1
57-8090	Gasket – Oil Base	23	20	1	59-0420	Yoke – Governor Shaft	25	4	1
57-8120	Kit – Gearcase	25	1	1	59-0430	Spring – Compression	31	8	1
57-8140	Washer – Gear Retaining	20	21	1	59-0440	Governor Shaft & Arm –	25	3	1
57-8150	Bolt – Special	20	11	1	59-0450	Cup – Governor	20	7	1
57-8160	Washer – Crankshaft	19	13	2	59-0460	Lever – Choke	30	2	1
57-8170	Shim – Crankshaft	19	38A/R		59-0470	Bracket – Choke Cable	30	4	1
57-8180	Ring – Gear	20	17	1	59-0590	Terminal – Stator Leads	25	18	3
57-8210	Gear – Camshaft	20	5	1	59-0640	Elbow – Street 45_	23	11	1
57-8230	Washer – Thrust	20	4	1	59-0720	Pin – Cotter	30	10	1
57-8250	Spring – Valve	19	27	4	59-0730	Pin – Bearing Stop	19	18	4
57-8270	Rotator – Valve	19	30	2	59-0740	Pin – Dowel, Governor	25	6	1
57-8450	Tappet – Valve STD	19	29	4	59-0750	Pin – Gearcase Alignment	19	39	2
57-8460	Kit – Oil Pump Gasket	23	17	1	59-0790	Stud – Gear Cover	25	14	1
57-8470	Valve – Plunger, Bypass	23	4	1	59-0810	Washer – Flat	20	13	1
57-8480	Pump – Oil	23	16	1	59-0820	Washer – Flat	31	27	4
57-8530	Filter – Oil	23	6	1	59-0830	Washer – Flat	31	11	4
57-8580	Baffle – Breather Tube	19	4	1	59-0850	Washer – Flat	30	1	1
57-9090	Ring – Retaining	20	8	9	59-0880	Bolt	19	19	5
57-9100	Spring – Extension	31	16	1	59-0950	Screw – Machine, Pan Hd	25	5	2
57-9120	Bushing – Control Arm	31	10	1	59-0970	Screw – Hex. Hd.	25	40	1
57-9130	Hub – Governor Cup	20	9	1	59-0980	Screw – Hex Washer Hd	31	15	2
57-9140	Arm – Governor Control	31	9	1	59-1010	Screw – Hex. Hd. Cap	31	6	2
57-9150	Bracket – Cable	31	5	1	59-1020	Screw – Shoulder	30	6	1
57-9170	Swivel – Choke Lever	30	8	1	59-1030	Screw – Hex. Hd. Cap	31	7	1
57-9180	Link – Choke	30	3	1	59-1080	Screw – Hex Washer Hd	31	17	5
57-9190	Clamp – Cable	31	3	1	59-1100	Screw – Hex Flange Hd	31	2	2
57-9190	Clip – Choke Cable	30	12	1	59-1120	Bolt	20	15	4
57-9340	Plug – Spark	25	33	2	59-1130	Nut	25	16	1
57-9360	Bearing – Flanged Sleeve	19	*	1	59-1180	Capacitor	25	42	1
57-9430	Regulator – Voltage	31	22	1	62-2710	Starter – Complete	32	*	1
57-9550	Clamp – Hose	27	2	1	62-2730	Kit – Bushing, Starter	32	8	1
57-9550	Clamp – Vacuum Port	25	19	1	62-2740	Kit – Brush, Starter	32	9	1
57-9570	Seal – Governor Shaft Oil	25	7	1	62-2760	Kit – Hardware, Starter	32	1	1
57-9580	Seal – Crankshaft Oil	25	9	1	62-2770	Kit – Shift Lever	32	4	1
57-9590	Seal – Oil Crankshaft	19	17	1	62-2800	Kit – Float	29	1	1

*Not Illustrated

TORO PART NUMBER INDEX (Continued)

Part No.	Description	Pg. No.	Ref. No.	Qty.	Part No.	Description	Pg. No.	Ref. No.	Qty.
62-7770	Key	35	10	1	82-0250	Lock - Valve Spring	19	28	8
62-9130	Grip PTO & Brake - Handle	13	22	2	82-0260	Gasket - Valve Cover	19	6	2
71-5960	Filter - Fuel	27	5	1	82-0270	Seal - Intake Valve	19	8	2
71-5990	Cover - Ignition Plunger	25	30	1	82-0410	Bushing - Piston Ring	21	7	2
71-6000	Coil	25	31	1	82-0420	Standard	21	*	4
71-6010	Rotor - Ignition	25	32	1	82-0430	.002 Undersize	21	*	4
71-6020	Cable - Spark Plug 18"	25	*	1	82-0440	.010 Undersize	21	*	4
71-6080	Bracket - Lifting	31	18	2	82-0450	.020 Undersize	21	*	4
71-6100	Hose - Vacuum	27	20	1	82-0460	.030 Undersize	21	*	4
71-6120	Hose	27	4	1	82-0470	Rod - Connecting	21	4	2
71-6140	Grommet - Rubber	26	34	1	82-0480	Tube - Oil Crankcase	19	21	1
71-6170	Seal	23	39	1	82-0500	Adapter - Oil Filter	23	12	1
71-6190	Key - Flywheel	20	23	1	82-0510	Drain - Oil	23	8	1
71-6220	Clamp - Wire	25	37	1	82-0530	Clamp - Breather Tube	19	32	1
71-6340	Screw	20	14	6	82-0540	Tube - Breather	19	3	1
71-6380	Control - Ignition	25	22	1	82-0550	Cap & Valve - Breather	19	2	1
71-6410	Insulator - Ignition Module	25	44	1	82-0560	Screen - Breather Tube	19	33	2
71-6430	Nut - Hex Flange	25	39	1	82-0570	Seal - Breather	19	34	1
71-6440	Nut - Hex Flange	25	36	1	82-0590	Oil Fill Cap & Indicator	23	23	1
71-6460	Screw - Hex Washer Hd	25	41	2	82-0610	Flywheel	20	18	1
72-3860	Kit - Choke Shaft	29	10	1	82-0620	Guard	31	29	1
72-3870	Kit - Choke Lever	29	11	1	82-0650	Cover - Element	26	12	1
72-3880	Screw - Washer Hd Cap	30	5	1	82-0660	Element - Air Cleaner	26	4	1
72-3890	Screw - Machine	30	9	1	82-0670	Foam Element - Air Cleaner	26	3	1
72-3900	Screw - Hex. Hd.	31	4	1	82-0690	Cover - Air Cleaner	26	2	1
72-3900	Screw - Washer Hd	30	11	1	82-0700	Tube - Air Intake	26	11	1
72-3930	Solenoid - Starter	32	5	1	82-0720	Support - Air Cleaner	26	25	1
72-3940	Kit - Clutch, Starter	32	3	1	82-0740	Jet - Power, High Altitude	29	4	1
74-0720	Tube - Manual	39	67	1	82-0750	Jet - Idle	29	5	1
76-1340	Decal - Made in USA	41	16	1	82-0770	Carburetor	27	7	1
78-0020	Hourmeter	35	6	1	82-0780	Kit - Repair	29	2	1
78-3270	Tank - Fuel	17	32	2	82-0790	Jet - Power	29	6	1
78-3320	Bracket - Gauge Mounting	35	8	1	82-0800	Solenoid - Fuel Cut-Off	29	8	1
78-7560	Linkage Drive, Lower RH	9	3	1	82-0810	Kit - Throttle Shaft	29	12	1
78-7570	Linkage Drive, Lower LH	9	*	1	82-0850	Gasket - Carburetor	29	3	1
79-0560	Strap	9	40	2	82-0850	Gasket - Carburetor	27	12	1
79-1260	Block - Pivot	9	13	2	82-0860	Gasket - Manifold to Block	27	18	2
79-2710	Panel - Front	11	16	2	82-0870	Manifold - Intake	27	14	1
79-4210	Fork - Front Wheel	2	17	2	82-0920	Bracket - Ignition Coil	25	43	1
79-4800	Handle	17	26	1	82-0980	Spacer	26	18	1
79-5250	Engine - 24 HP Toro Power	17	11	1	82-1000	Kit - Terminal Connector	25	21	1
79-5630	Fender - RH	11	6	1	82-1070	Connector - Hose	27	21	1
79-6440	Guard - Flywheel	20	16	1	82-1080	Clamp - Wire	27	3	6
79-6470	Gasket - Adapter	23	13	1	82-1090	Clamp - Breather Hose	26	33	2
79-6490	Gasket - Plate	25	29	1	82-1110	Hose - Fuel	27	6	1
82-0010	Decal - Air Cleaner	26	17	1	82-1160	Key - Crankshaft Stub	20	25	1
82-0020	Plate - Bearing,	19	15	1	82-1300	Washer - Flat	19	44	20
82-0040	Nut	19	40	20	82-1310	Washer - Flat	27	13	4
82-0070	Washer	19	48	2	82-1310	Washer - Flat	23	26	4
82-0080	Insert - Exhaust Seat STD	19	24	2	82-1310	Washer - Lock	19	42	5
82-0090	Insert - Exhaust Seat.	19	*	2	82-1320	Washer - Flat	20	12	1
82-0100	Insert - Exhaust Seat	19	*	2	82-1340	Washer	27	17	2
82-0110	Insert - Exhaust Seat	19	*	2	82-1340	Washer - Lock	25	35	2
82-0120	Insert - Exhaust Seat .025	19	*	2	82-1340	Washer - Lock, Spring	23	15	2
82-0130	Gasket - Cylinder Hea	19	9	2	82-1350	Washer - Flat	27	16	2
82-0140	Guide - Exhaust Valve	19	26	2	82-1360	Screw - Hex. Hd. Cap	25	38	1
82-0150	Guide - Intake Valve	19	*	2	82-1370	Bolt	23	14	1
82-0160	Insert - Intake Seat STD	19	25	2	82-1380	Bolt	19	31	2
82-0180	Insert - Intake Seat	19	*	2	82-1470	Bolt - Rod Cap	21	5	4
82-0210	Cylinder Head	19	10	2	82-1480	Screw - Round Hd	19	11	1
82-0220	Valve - Intake	19	22	2	82-1500	Screw - Machine, Hex. Hd.	25	23	3
82-0230	Valve - Exhaust	19	23	2	82-1510	Screw - Cap Hex. Hd.	23	7	2
82-0240	Cap - Exhaust Valve	19	43	2	82-1520	Gasket - Exhaust	17	7	2

*Not Illustrated

TORO PART NUMBER INDEX (Continued)

Part No.	Description	Pg. Ref. No. No. Qty.	Part No.	Description	Pg. Ref. No. No. Qty.
82-1550	Screw - Hex Washer Hd	26 7 2	92-9810	Wire Harness	33 * 1
82-1550	Spacer - Cover	26 9 1	92-9811	Switch - PTO	35 20 1
82-1590	Screw - Pan Hd	31 28 4	93-3160	Electric Clutch - Complete	37 1 1
82-1600	Screw - Hex Washer Hd	31 13 2	93-3176	Rotor & Armature Asm	37 2 1
82-1630	Washer - Lock	20 26 4	93-3226	Mat - Footrest	11 15 1
82-1650	Washer - Lock	19 45 24	242-50	Nut - Lug	2 2 8
82-1660	Washer - Lock	25 25 2	2412-98	Clamp - Hose	17 37 5
82-1660	Washer - Lock	30 7 1	2412-120	Clamp - Tube	39 68 2
82-1690	Nut - Hex Washer Hd	26 27 2	282-2	Yoke - Threaded	9 20 2
82-1730	Nut - Hex, Starter	32 6 1	283-6	Pin - Clevis	13 11 2
83-3560	Tire - Front 13 x 5.00-6	36 9 2	283-61	Pin - Clevis	9 26 2
88-2150	Seat - Back	39 38 1	288-4	Cap	17 30 1
88-2160	Seat - Bottom	39 39 1	289-45	Nipple	17 28 1
88-2790	Decal - Danger	41 4 2	2811-10	Elbow	17 29 1
88-3250	Nut - Lock	39 43 2	302-2	Fitting - Grease	3 13 4
88-3300	Plate - Lumbar Friction	39 48 2	302-5	Fitting - Grease	2 22 4
88-3310	Support - Back, LH	39 52 1	302-5	Fitting - Grease	9 27 2
88-6530	Tire - Knobby, Rear	36 * 2	321-2	Screw	17 19 2
92-0913	Nut - Wing	26 13 1	321-3	Bolt	13 8 1
92-0915	Screw - Machine, Hex. Hd.	26 8 3	321-3	Bolt	11 3 10
92-0924	Block - Short 24 HP.	19 1 1	321-4	Bolt	35 26 2
92-0925	Insert - Intake Seat	19 * 2	321-4	Bolt	35 37 1
92-0926	Insert - Intake Seat	19 * 2	321-4	Bolt	39 59 2
92-0927	Insert - Intake Seat	19 * 2	321-4	Bolt	11 8 2
92-0928	Mtg. Stud - Cylinder Hd	19 36 8	322-3	Bolt	17 5 1
92-0929	Mtg. Stud - Cylinder Hd	19 * 4	322-3	Bolt	3 21 2
92-0932	Mtg. Stud - Cylinder Hd	19 * 8	322-3	Bolt	9 39 1
92-0933	Ring - Retaining	21 3 4	322-3	Bolt	34 2
92-0934	.005 Oversize	21 * 2	322-3	Screw	35 51 1
92-0935	.010 Oversize	21 * 2	322-5	Bolt	3 18 4
92-0936	.020 Oversize	21 * 2	322-5	Bolt - Hex	15 13 2
92-0937	.030 Oversize	21 * 2	322-5	Bolt	39 4
92-0938	Pin - Piston	21 2 2	322-9	Bolt	15 12 2
92-0940	.005 Oversize	21 * 2	322-22	Screw - Hex. Hd.	32 12 2
92-0941	Gear - Crankshaft	20 22 1	322-41	Bolt	11 19 2
92-0942	Base - Oil	23 19 1	322-41	Screw - Machine, Hex. Hd.	3 33 2
92-0943	Plug - Drain	23 22 1	323-4	Bolt	39 64 8
92-0944	Cup - Oil Pump Intake	23 18 1	323-4	Bolt	37 12 2
92-0945	Tube - Crankcase Breather	26 14 1	323-4	Bolt	39 46 2
92-0946	Plate - Air Deflector	26 10 1	323-6	Bolt	4 9 4
92-0947	Tube - Oil Fill Spec.	23 38 1	323-6	Bolt	3 24 4
92-0949	Housing - Air L.H.	31 14 1	323-6	Bolt	17 27 2
92-0950	Housing - Air R.H.	31 20 1	323-6	Bolt - Hex	3 31 5
92-0960	Harness - Wire	25 48 1	323-6	Bolt - Hex	25 5
92-0967	Stator with Terminals	25 17 1	323-6	Bolt	31 4
92-1714	Bushing - Front Bearing	2 15 4	323-7	Bolt	4 14 2
92-1715	Spacer - Front Wheel	36 6 4	323-7	Bolt	15 26 8
92-1759	Frame w/Bumper	2 11 1	323-7	Bolt	2 4 12
92-1799	Fan - LH, Clockwise	4 13 1	323-7	Bolt	13 7 2
92-2369	Decal - Temperature Alarm	41 13 1	323-7	Bolt	9 17 2
92-2500	Decal - Danger	41 3 2	323-8	Bolt	3 7 8
92-2501	Decal - Speed Control	41 8 1	323-8	Bolt	8 8
92-2502	Decal - Parking Brake	41 6 1	323-10	Bolt	2 6 2
92-2503	Decal - Steering/Throttle	41 9 1	323-14	Bolt	4 3 8
92-2504	Decal - Danger	41 2 1	323-14	Screw - Hex. Hd. Cap	27 11 4
92-2505	Decal - Zero Turn RH	41 10 1	323-25	Screw	23 21 4
92-2506	Decal - Zero Turn LH	41 14 1	325-5	Bolt	39 44 4
92-2509	Decal - Proline 724-Z	41 15 1	327-4	Bolt - Idler Sprocket	3 2 2
92-4075	Bracket - Seat Mounting	39 2 1	327-4	Bolt - Idler Sprocket	26 2
92-4845	Hub - Rear Wheel	2 27 2	327-15	Bolt	2 18 2
92-6519	Grip Handle - Control	9 1 2	3211-5	Bolt	37 7 1
92-9804	Standard	21 * 2	3217-5	Nut	35 40 3
92-9810	Harness - Wiring	35 7 1	3217-5	Nut	9 11 8

*Not Illustrated

TORO PART NUMBER INDEX (Continued)

Part No.	Description	Pg. Ref. No. No. Qty.	Part No.	Description	Pg. Ref. No. No. Qty.
3217-6	Nut	3 20 2	3256-24	Washer - Flat	39 66 4
3217-6	Nut	11 18 4	3256-24	Washer	32 2
3217-6	Nut	5 4	3256-26	Washer - Special	9 24 4
3217-27	Nut - Keps	35 17 1	3256-27	Washer	3 32 6
3217-30	Nut	2 20 2	3256-27	Washer	28 6
3218-5	Nut - Jam	9 21 4	3256-68	Washer - Fender	11 13 4
3219-2	Nut	13 13 2	3272-6	Pin - Cotter	13 19 2
3219-2	Nut - Hex	9 19 2	3272-6	Pin - Cotter	13 14 2
3231-4	Bolt - Carriage	39 45 2	3272-7	Pin - Cotter	9 7 6
3234-18	Bolt	17 6 4	3272-7	Pin - Cotter	39 62 2
3245-32	Screw - Set	3 12 4	3272-19	Pin - Cotter	15 10 2
3247-3	Screw - Set	4 7 2	3274-22	Bolt	17 9 8
3247-4	Screw	19 41 2	3290-134	Screw	17 16 1
3248-6	Screw - Set Sq	4 4 8	3290-134	Screw	35 49 2
3253-2	Washer - Lock	25 15 3	3290-378	Straps - Tie	17 35 4
3253-3	Washer - Lock	17 20 2	3290-378	Tie - Cable	2 * 1
3253-3	Washer - Lock	35 39 1	3290-378	Tie - Cable	9 * 4
3253-3	Washer - Lock	35 29 2	3296-2	Nut	17 18 1
3253-4	Washer - Lock	17 8 8	3296-2	Nut	35 50 3
3253-8	Washer - Lock	2 19 2	3296-23	Nut	9 22 2
3253-21	Washer - Lock	3 30 4	3296-23	Nut	9 36 1
3253-21	Washer - Lock	3 8 4	3296-29	Nut	35 3
3253-21	Washer - Lock	30 4	3296-29	Nut	17 2 1
3253-21	Washer - Lock	41 4	3296-29	Nut	15 11 2
3253-23	Washer - Flat	15 23 8	3296-29	Nut	3 15 3
3256-2	Washer	39 57 8	3296-29	Nut	9 38 1
3256-2	Washer	11 10 11	3296-29	Nut - Lock	35 52 1
3256-4	Washer	2 7 2	3296-39	Nut	4 2 14
3256-4	Washer	4 8 18	3296-39	Nut	2 5 2
3256-4	Washer - Flat	3 9 8	3296-39	Nut	2 3 12
3256-4	Washer - Flat	7 8	3296-39	Nut	9 9 4
3256-21	Washer - Lock	15 25 8	3296-39	Nut	3 26 4
3256-21	Washer - Lock	39 65 8	3296-39	Nut 3/8-16	33 4
3256-22	Washer	35 27 2	3296-42	Nut	11 4 10
3256-22	Washer	35 38 1	3296-42	Nut	39 58 2
3256-22	Washer - Flat	11 2 10	3296-65	Nut	35 45 1
3256-23	Washer	9 4 6	32103-22	Nut Wing	35 28 2
3256-23	Washer - Flat	17 3 1	32105-2	Screw	35 53 1
3256-23	Washer - Flat	13 18 2	32121-114	Pin - Spirol	13 17 1
3256-23	Washer - Flat	3 23 1	32144-1	Screw	4 20 8
3256-23	Washer - Flat	37 1	32144-1	Screw	39 69 2
3256-24	Washer	13 3 1	32144-4	Bolt	2 24 3
3256-24	Washer	17 23 1	32144-4	Bolt	39 34 5
3256-24	Washer	37 13 2	32144-4	Bolt	11 9 11
3256-24	Washer	3 25 2	32149-7	Nut	35 48 2
3256-24	Washer - Flat	9 8 2	32151-91	Ring - Retaining	2 12 2

*Not Illustrated

In an effort to make improvements available to TORO owners as quickly as possible, minor changes are incorporated into Toro's products from time to time that do not become immediately shown in the Parts Catalog. If such a change has been made in your unit, which is not reflected in your manual, see your TORO Distributor or his Authorized TORO Service Dealer for information and part numbers.

IDENTIFICATION AND ORDERING

MODEL AND SERIAL NUMBERS

The two identification numbers; a model number and a serial number. The two numbers are stamped on a plate which is located on the main frame under the seat. In any correspondence concerning the Product, supply model and serial numbers to assure that correct information and replacement parts are obtained.

To order replacement parts from an Authorized TORO Service Dealer, supply the following information:

1. Model and serial number.
2. Part number, description, and the quantity of part(s) desired.

NOTE: Do not order by reference number if a parts catalog is being used; use the PART NUMBER.

TABLE OF CONTENTS

Description	Page	Description	Page
Frame, Rear Hub And Front Wheel Fork	2	Gearcase And Ignition Controls	24
Transmission Drive Frame	3	Air Cleaner	26
Transmission Drive	4	Carburetor, Intake Manifold And Fuel Pump	27
"T" Gearbox Assembly	5	Carburetor Components	28
Hydrostatic Transmission	6	Choke Linkage	30
Transmission Drive Linkage	8	Blower Housing Assembly	31
Fender And Covers	10	Starter	32
Parking Brake	12	Electrical Schematic	33
Attachment Height Control	14	Electrical Systems	34
Engine And Fuel System	16	Wheel And Tires	36
Engine Cylinder Block	18	P.T.O. Electric Clutch	37
Crankshaft, Camshaft, And Flywheel	20	Seat	38
Piston And Rod	21	Decals	40
Oil System	22	Numeric Index	42

Optional Equipment

Description	Part /Model No.	Description	Part /Model No.
50" Side Discharge Mower	78445	Knobby Tire Assembly	111920
60" Side Discharge Mower	78475	Drawbar	112951
8 cu. ft. Canister Vac (50" Mower*)	79430	Front Weight Kit	81127
8 cu. ft. Canister Vac (60" Mower*)	79431		

* Require Front Weight Kit # 81127