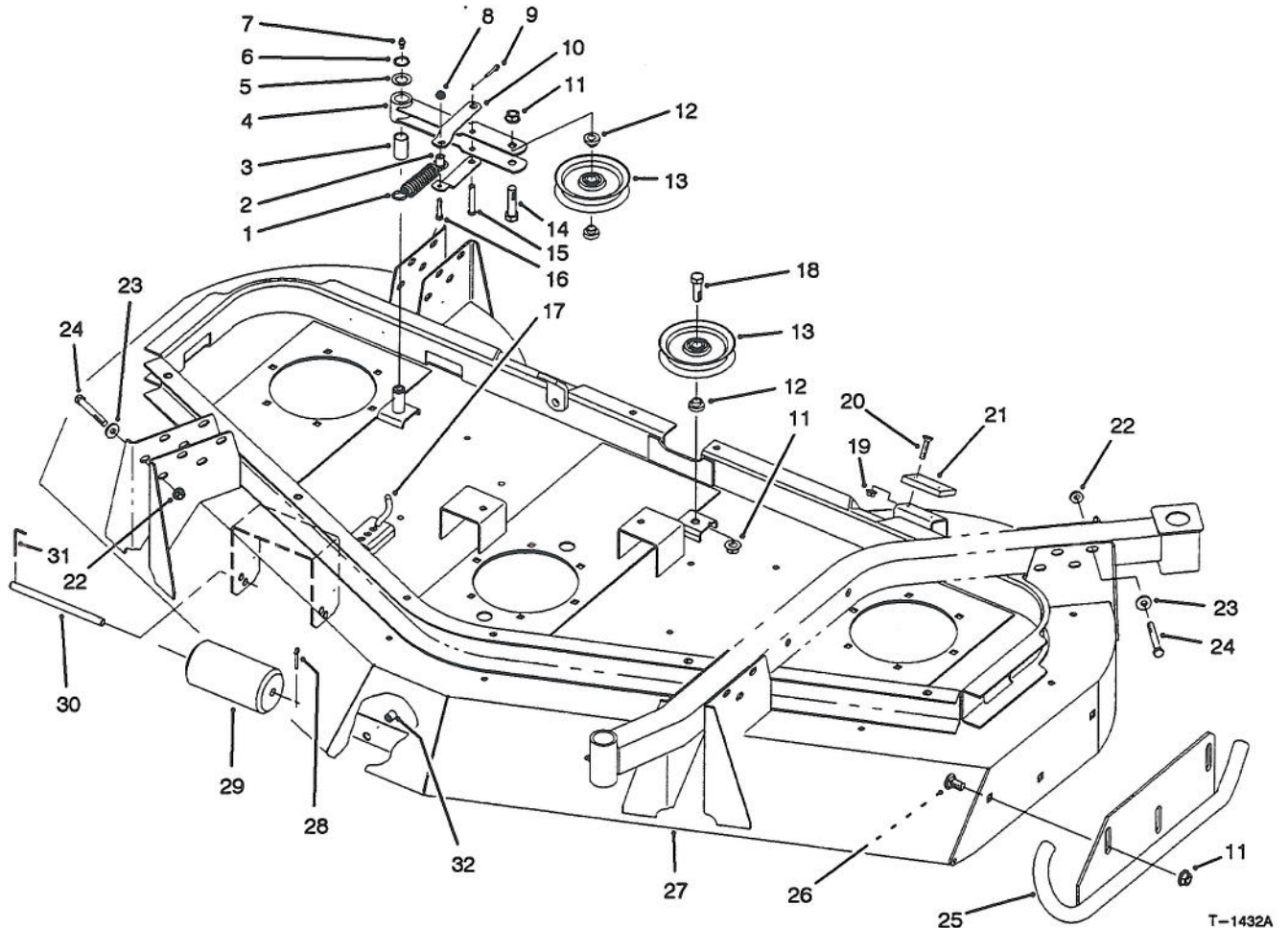




MODEL NO. 30716-50101 & UP

PARTS  
CATALOG

GUARDIAN® 72" RECYCLER®



HOUSING, IDLERS & SKIDS ASSEMBLY

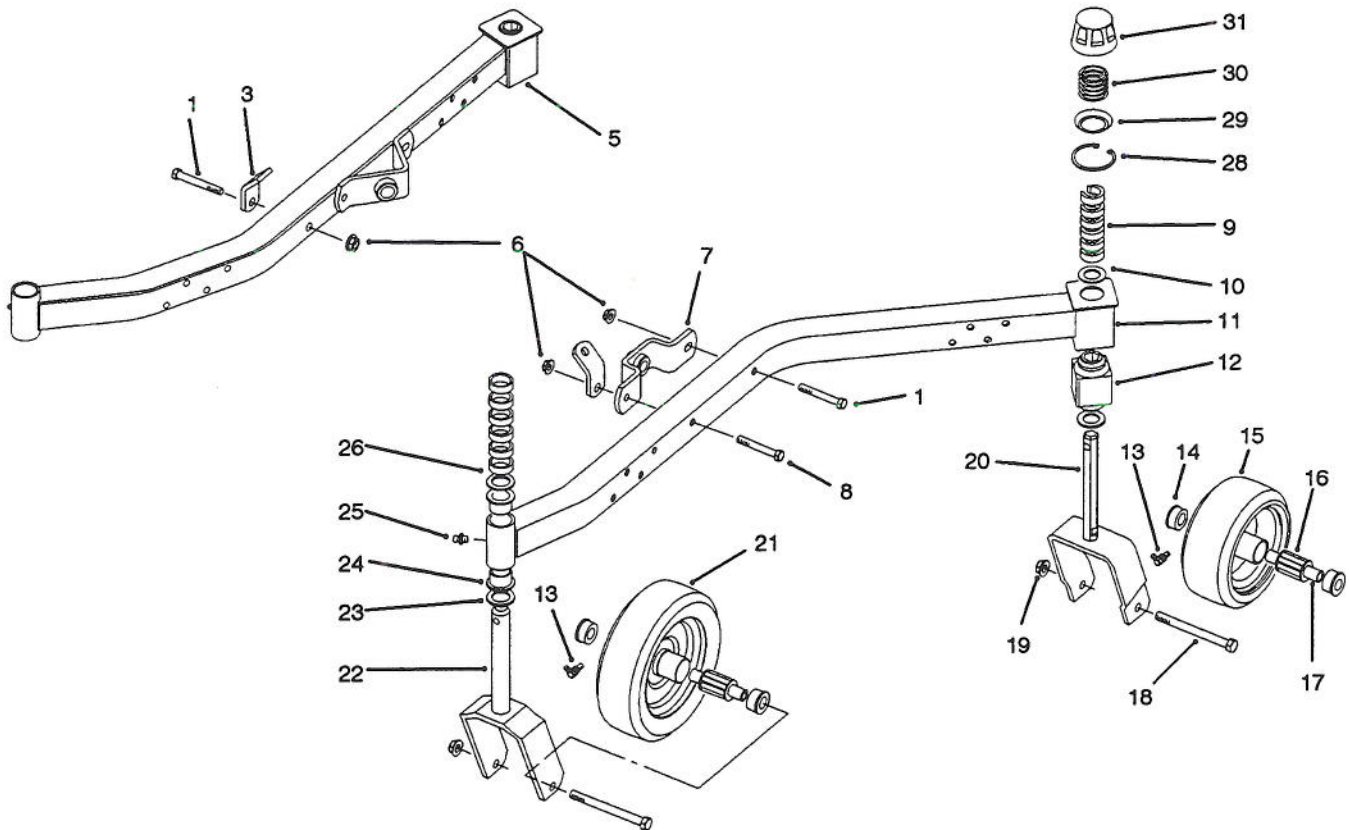
Ref. No.	Part No.	Description	No. Used
1	85-6390	Spring	1
2	85-5930	Tube - Spring	1
3	256-188	Bushing	1
4	85-5900	Arm - Idler	1
5	3-6498	Washer	1
6	32120-72	Ring - Retaining	1
7	302-2	Fitting - Grease	1
8	32128-32	Nut - Flange Head	1
9	3290-467	Pin - Cotter	1
10	85-5920	Bracket - Idler Arm	2
11	32128-49	Nut - Flange Head	8
12	69-6960	Spacer - Idler	3
13	63-1540	Pulley - Idler	2
14	325-8	Screw - Cap Hex. Hd.	1
15	283-82	Pin - Clevis	1
16	321-8	Screw - Cap Hex. Hd.	1
17	85-5940	Rod - Spring	1

Ref. No.	Part No.	Description	No. Used
18	325-6	Screw - Cap Hex. Hd.	1
19	32128-25	Nut - Flange Head	2
20	32108-103	Screw - Flat Head	2
21	69-9290	Pad - Bumper	1
22	32128-19	Nut - Lock Fl. Hd.	16
23	5-0838	Washer	16
24	323-14	Screw - Cap Hex. Hd.	16
25	85-5980	Skid - LH	1
*	85-5950	Skid - RH	1
26	3233-9	Bolt - Carriage	6
27	93-9340	Housing Assembly (Incl. Ref. #32)	1
28	3272-11	Pin - Cotter	2
29	36-1740	Roller	3
30	40-6400	Shaft - Roller	3
31	57-0690	Pin - Special	3
32	32148-7	Insert - Threaded	12

\*Not Illustrated

©The TORO Company - 1995  
All Rights Reserved

TPS



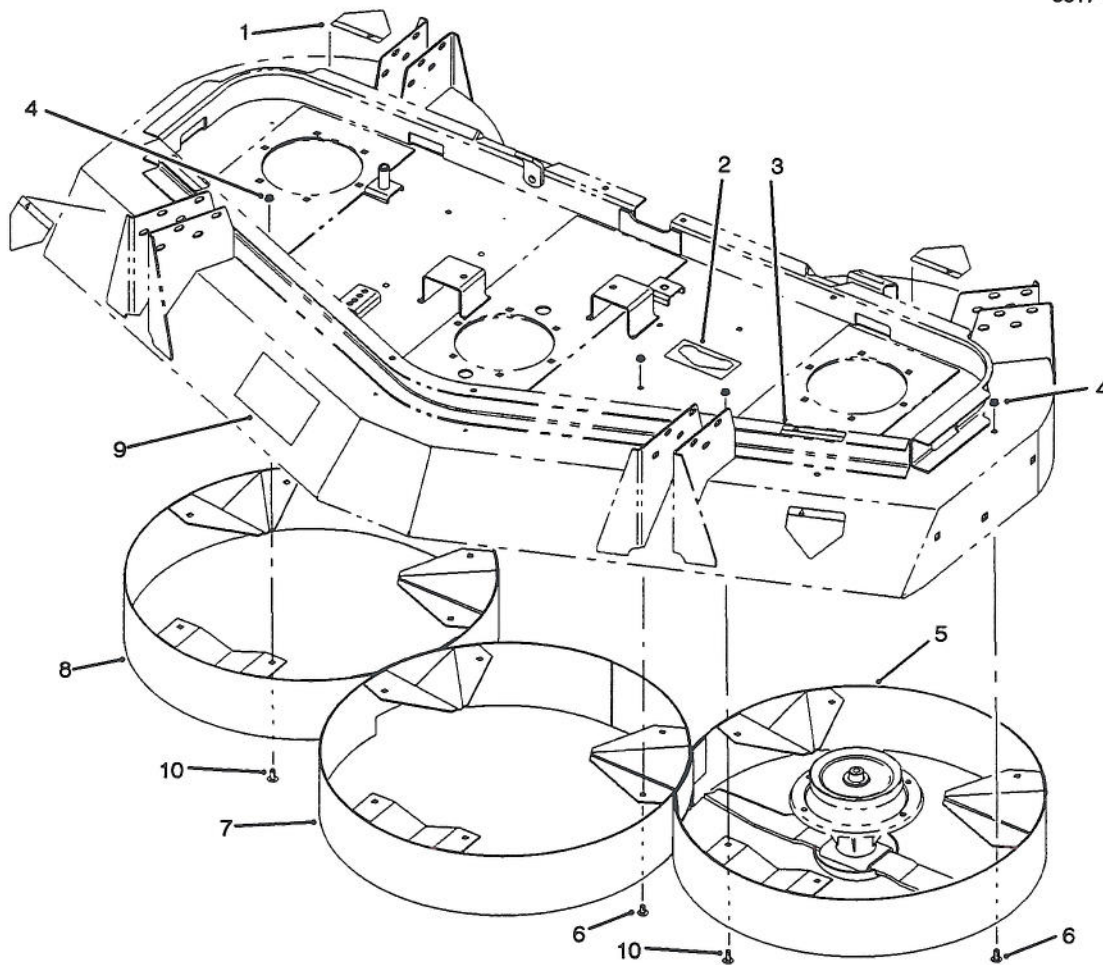
T-1433

## CASTOR WHEELS & ARM ASSEMBLY

Ref. No.	Part No.	Description	No. Used
1	324-12	Screw - Cap Hex. Hd.	4
3	85-5830	Bracket - Chain	2
5	92-1766	Castor Arm Assembly RH (Incl. Ref. #12, 24 & 25)	1
6	32128-42	Nut - Flange Head	3
7	85-5810	Mount - Ball Joint, LH	1
8	324-13	Screw - Cap Hex. Hd.	1
9	92-8866	Spacer	12
10	92-1765	Washer	4
11	92-1768	Castor Arm Assembly LH (Incl. Ref. #12, 24 & 25)	1
12	93-8471	Bushing - Rubber	2
13	302-40	Fitting - Grease	4
14	62-5580	Bearing	8
15	85-5760	8" Wheel Assembly (Incl. Ref. #13-14 & 16)	2
16	83-4740	Bearing - Roller	4
17	62-4340	Spanner	4
18	325-22	Screw - Cap Hex. Hd.	4

Ref. No.	Part No.	Description	No. Used
19	32128-23	Nut - Lock, Flange Head	4
20	92-1761	Fork - Castor, Rear	2
21	92-1655	10" Wheel Assembly (Incl. Ref.#13-14 & 16)	2
22	26-1530	Fork - Castor Front	2
23	3-6781	Washer	4
24	28-9290	Bushing	4
25	302-5	Fitting - Grease	2
26	63-0070	Spacer	12
28	92-5581	Ring - Retaining	4
29	92-5583	Washer - Cap	4
30	92-5584	Spring - Compression	4
31	92-8861	Cap - HOC	4
*	92-8862	HOC Cap Assembly (Incl. Ref. #28-31)	2
*	76-1880	Segmented Tire Assy. - 10" (Optional)	2
*	12-1509	Pneumatic Wheel/Tire Assy. (Optional)	2

\*Not Illustrated

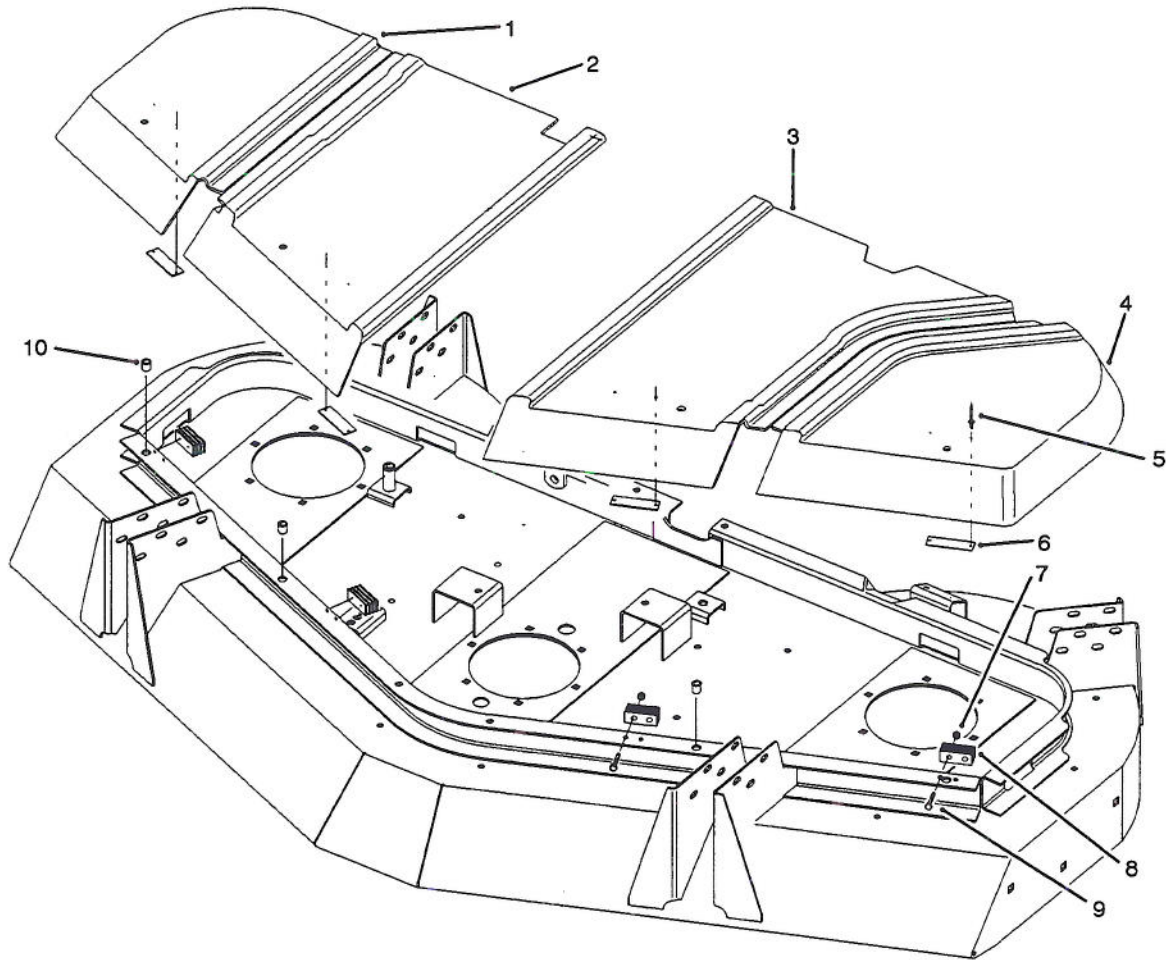


T-1434

## CHAMBERS, KICKERS & DECALS

Ref. No.	Part No.	Description	No. Used
1	43-8480	Decal - Danger	4
2	85-6120	Decal - Belt Routing	1
3	85-6410	Decal - Danger	4
4	32128-25	Nut - Flange Head	18
5	85-6460	Chamber - LH	1

Ref. No.	Part No.	Description	No. Used
6	3230-18	Bolt - Carriage	16
7	85-6480	Chamber - Center	1
8	85-6470	Chamber - RH	1
9	85-6430	Decal - Guardian	1
10	3230-23	Bolt - Carriage	2

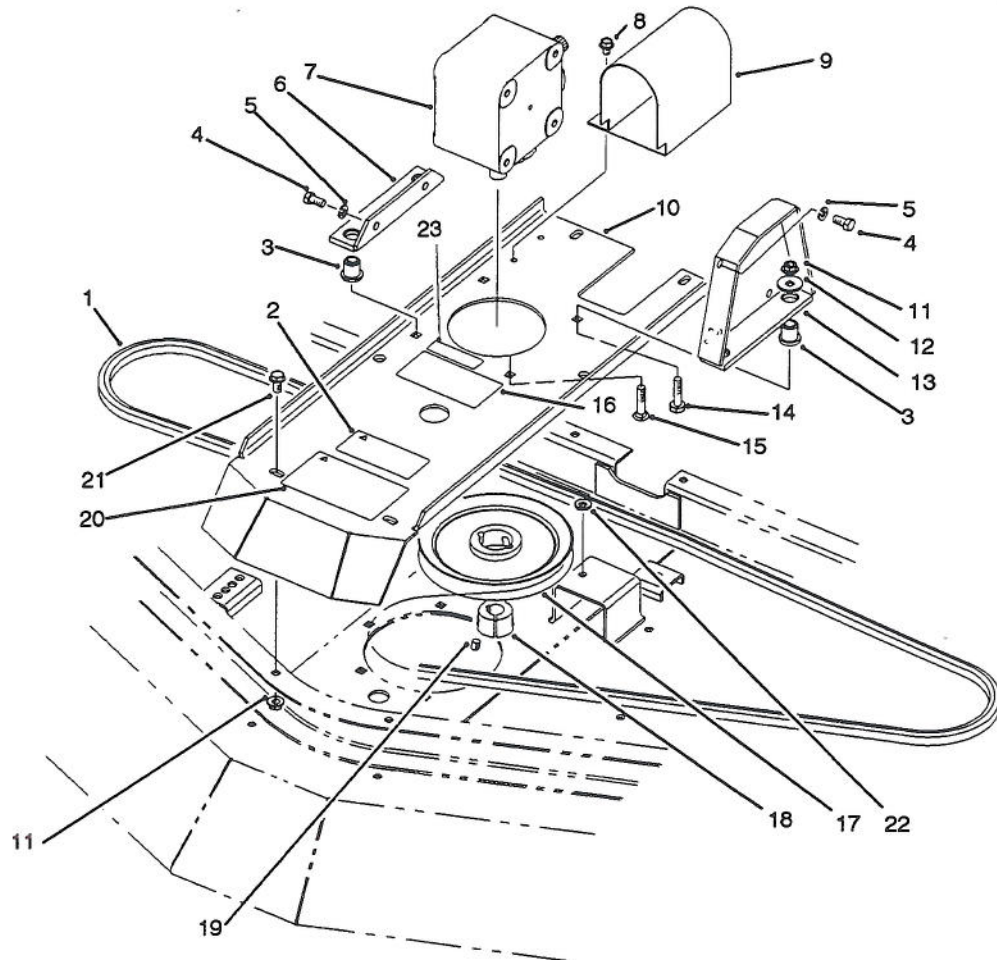


T-1435

### COVER ASSEMBLY

Ref. No.	Part No.	Description	No. Used
1	85-6080	Cover - RH	1
2	85-6070	Cover - RH Center	1
3	85-6060	Cover - LH Center	1
4	85-6050	Cover - LH	1
5	3269-25	Rivet - Pop	8

Ref. No.	Part No.	Description	No. Used
6	69-6870	Plate - Magnet	4
7	3296-2	Nut - Lock	8
8	69-6260	Magnet	4
9	32105-1	Screw - Hex. Hd. Machine	8
10	32148-7	Insert - Threaded	4

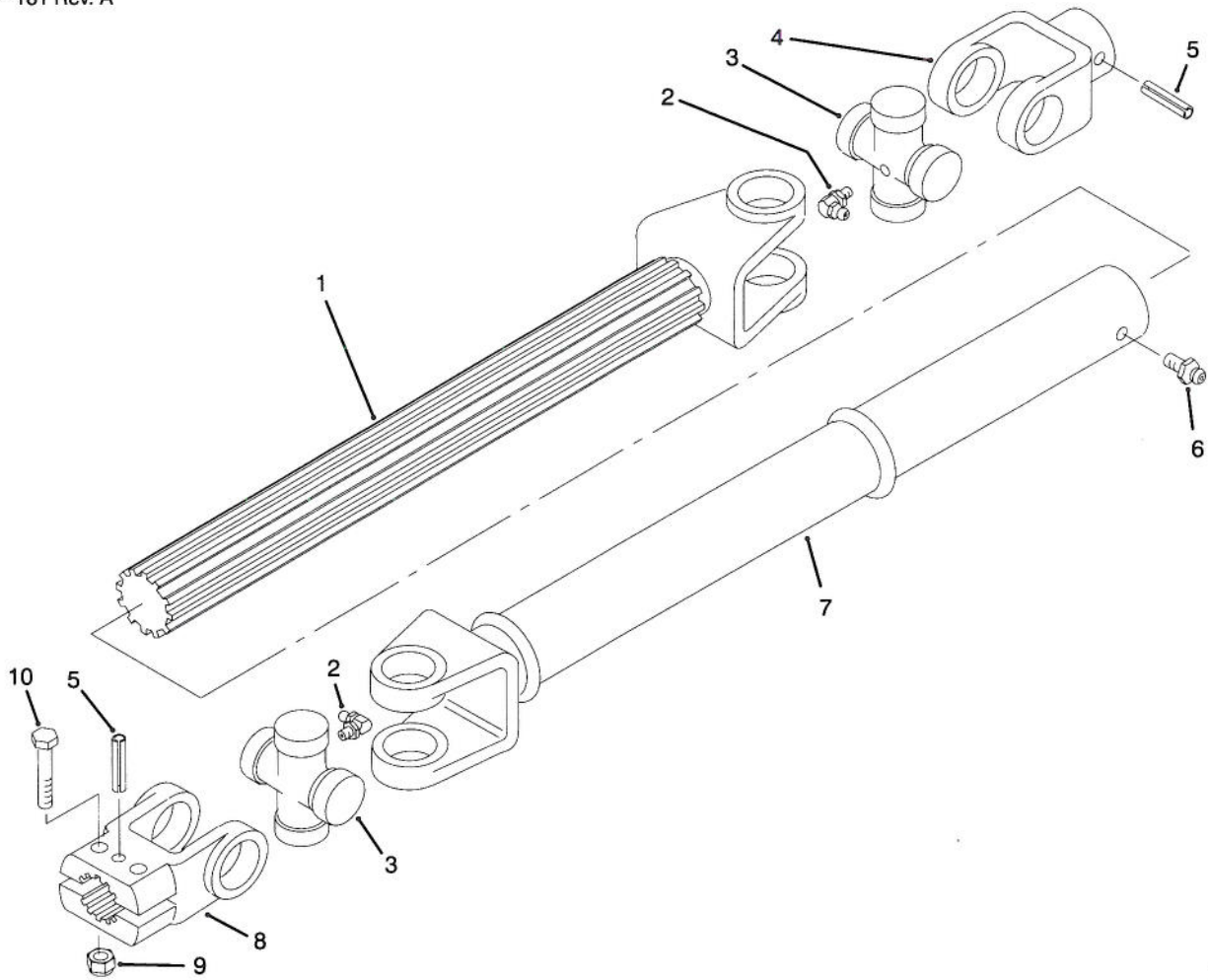


T-1436

## GEAR BOX & MOUNT ASSEMBLY

Ref. No.	Part No.	Description	No. Used
1	93-8457	Belt - Drive	1
2	68-8340	Decal - Torque	1
3	63-9750	Mount	4
4	323-4	Screw - Cap Hex. Hd.	5
5	3253-21	Washer - Lock	5
6	68-8560	Bracket - Gear Box RH	1
7	68-6810	Assembly - Gear Box	1
8	32104-82	Screw - Flange Head	2
9	93-9839	Shroud - Drive Shaft	1
10	16-1259	Gear Box Plate Assembly (Incl. Ref. #2, 16, & 20)	1
11	32128-21	Nut - Lock, Flange Head	10
12	63-8410	Washer	4

Ref. No.	Part No.	Description	No. Used
13	85-6330	Bracket - Gear Box	1
14	3234-18	Screw - Cap Fl. Hd.	1
15	3231-26	Bolt - Carriage	3
16	85-6130	Decal - Height-Of-Cut	1
17	85-5860	Pulley	1
18	23-1640	Bushing - Taperlock (Incl. Ref. #19)	1
19	3247-4	Screw - Set	2
20	92-7847	Decal - Warning	1
21	3234-11	Screw - Flange Head	6
22	3256-24	Washer - Flat	A/R
23	70-2560	Decal - Lube	1



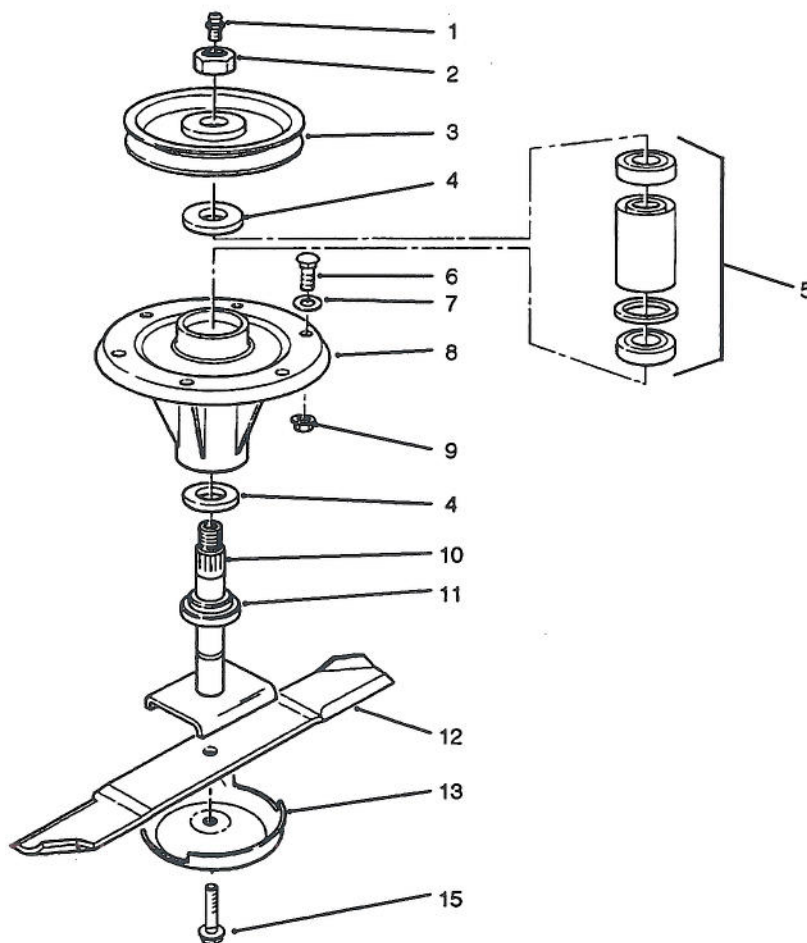
T-2041

## DRIVE SHAFT ASSEMBLY NO. 93-9962

Ref. No.	Part No.	Description	No. Used
1	93-9957	Shaft - Slip Yoke	1
2	62-3820	Fitting - Grease	2
3	54-9180	Kit - Universal Joint	2
4	62-3800	Yoke - End	1
5	32121-34	Pin - Roll	2
6	302-58	Fitting - Grease	1

Ref. No.	Part No.	Description	No. Used
7	93-9961	Tube - Slip Yoke	1
8	54-9040	Yoke - End	1
9	3296-29	Nut - Lock	2
10	322-9	Screw - Cap Hex. Hd.	2
*	93-9995	Drive Shaft & Guards (CE)	1

\*Not Illustrated



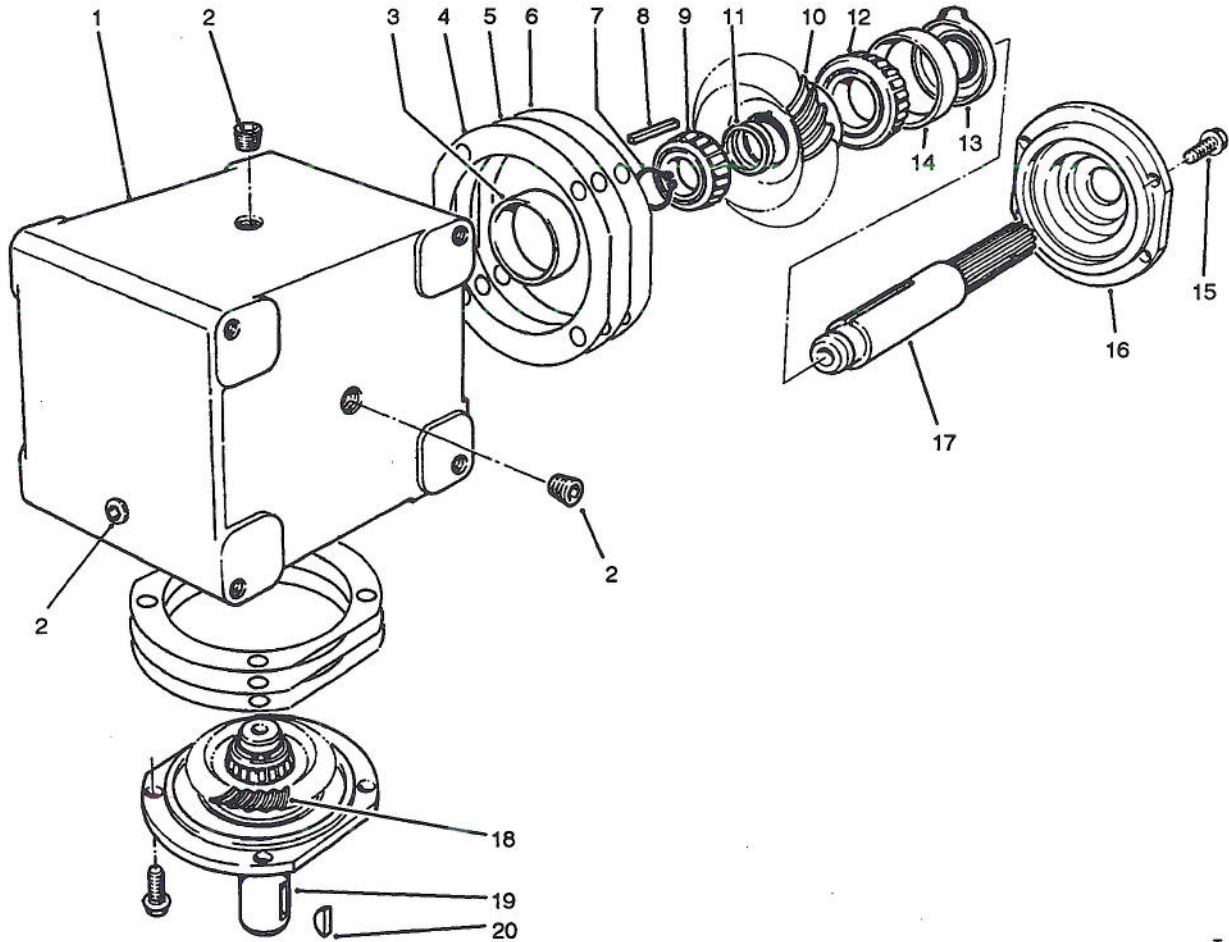
T-1438A

### SPINDLE ASSEMBLY

Ref. No.	Part No.	Description	No. Used
1	302-2	Fitting - Grease	3
2	3296-49	Nut - Lock	3
3	85-6030	Pulley - Spindle	3
4	253-154	Seal - Wave	6
5	71-2530	Bearing Assembly	3
6	3231-27	Bolt - Carriage	18
7	3256-24	Washer - Flat	A/R

Ref. No.	Part No.	Description	No. Used
8	69-1530	Housing - Spindle	3
9	32128-21	Nut - Flange Head	18
10	85-6010	Shaft - Spindle	3
11	92-9800	Spacer - Spindle Shaft	3
12	85-6040	Blade - 25.18"	3
13	72-9361	Cup - Anti-Scalp	3
15	92-5816	Screw - Blade	3

Quantities shown are for three deck spindles.

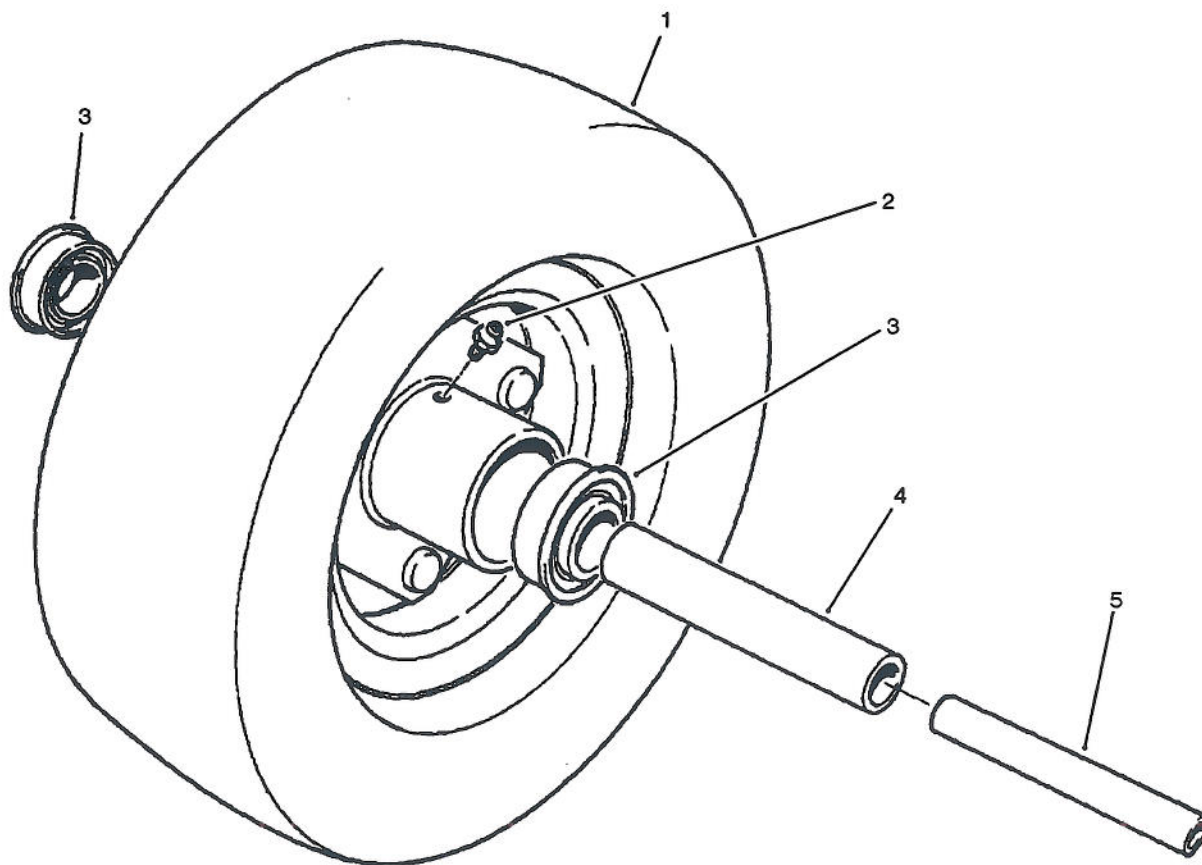


T-0977A

## GEAR BOX ASSEMBLY NO. 68-6810

Ref. No.	Part No.	Description	No. Used
1	68-7030	Housing	1
2	62-3490	Plug - Pipe (Solid)	4
3	62-3360	Cup - Bearing	2
4	62-3420	Gasket (.015 in.)	A/R
5	62-3430	Gasket (.005 in.)	A/R
6	62-3440	Gasket (.003 in.)	A/R
7	68-7070	Ring - Retaining	2
8	62-3380	Key	2
9	62-3370	Cone - Bearing	2
10	68-7080	Gear	1

Ref. No.	Part No.	Description	No. Used
11	72-9370	Shim (.020 in.)	2
12	254-94	Cone - Bearing	2
13	62-3400	Seal	2
14	62-3340	Cup - Bearing	2
15	62-3310	Screw - Cap	8
16	62-3410	Cap	2
17	68-7040	Shaft	1
18	68-7060	Gear	1
19	68-7050	Shaft	1
20	3257-5	Key - Woodruff	1

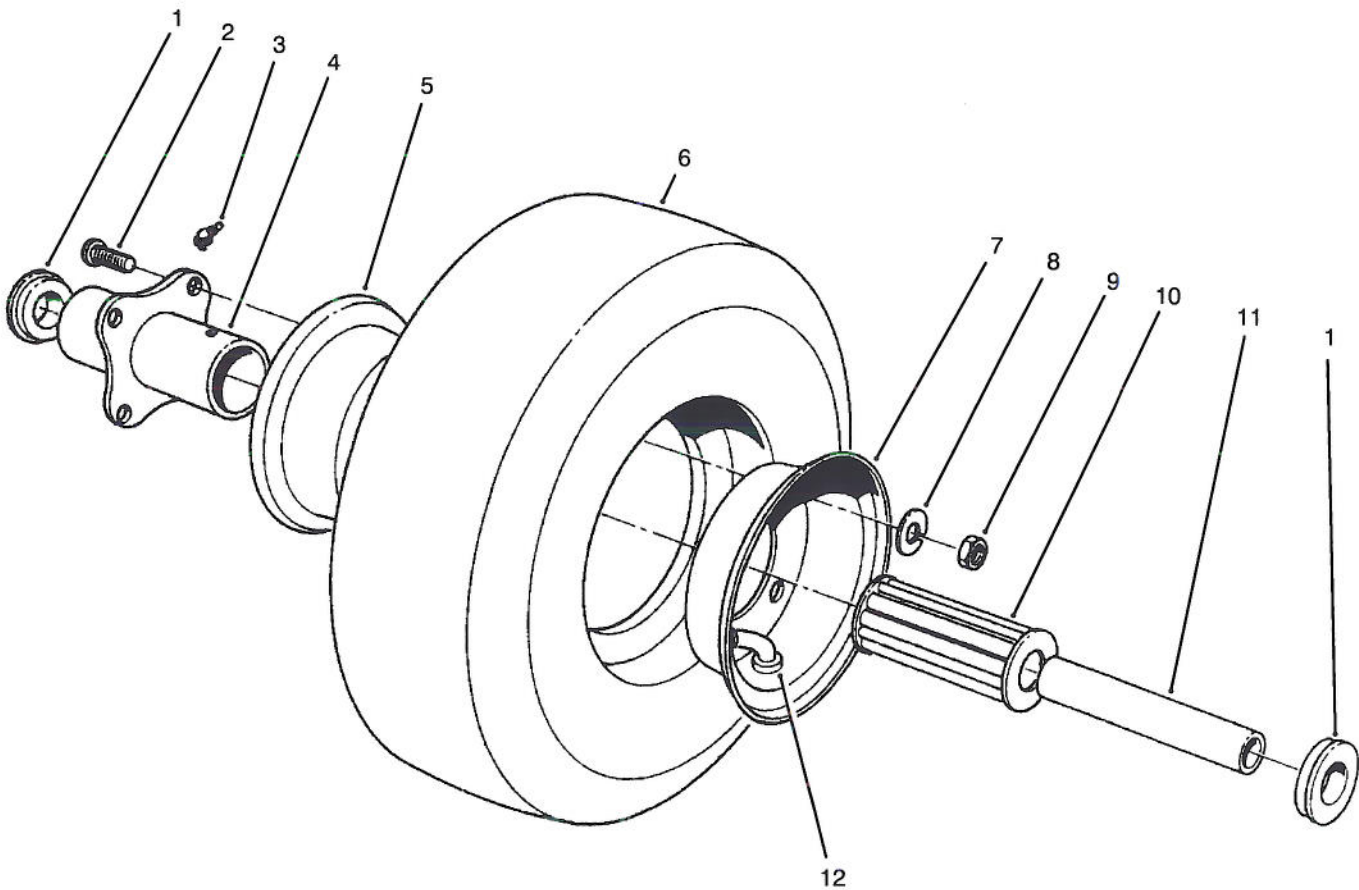


T-1177

## 10" SEGMENTED FRONT CASTER WHEEL (Optional)

Ref. No.	Part No.	Description	No. Used
1	76-1880	10" Segmented Wheel Assy. (Incl. Ref. #2-5)	1
2	302-5	Fitting - Grease	1

Ref. No.	Part No.	Description	No. Used
3	251-321	Bearing - Ball	2
4	251-332	Spacer - Inner	1
5	80-0040	Spacer	1



T-0448

## PNEUMATIC TIRE & WHEEL ASSEMBLY (Optional)

Ref. No.	Part No.	Description	No. Used
1	54-8930	Retainer	2
2	54-8890	Bolt - Wheel	4
3	302-10	Fitting - Grease	1
4	54-8920	Hub - Centered	1
5	54-8910	Wheel Half - Female	1
6	54-8960	Tire	1
7	54-8900	Wheel Half - Male	1
8	3253-4	Washer - Lock	4

Ref. No.	Part No.	Description	No. Used
9	3217-6	Nut - Hex.	4
10	54-8940	Bearing - Roller (Open Cage)	1
11	55-7080	Bushing - Spanner	1
12	54-8950	Tube w/Valve	1
*	12-1509	Pneumatic Wheel Assembly (Incl. Ref #1-12)	1

\*Not Illustrated

# TORO PART NUMBER INDEX

Part No.	Description	Pg. Ref. No. No. Qty.	Part No.	Description	Pg. Ref. No. No. Qty.
3-6498	Washer	1 5 1	85-5930	Tube - Spring	1 2 1
3-6781	Washer	2 23 4	85-5940	Rod - Spring	1 17 1
5-0838	Washer	1 23 16	85-5950	Skid - RH	1 * 1
12-1509	Pneumatic Wheel/Tire Assy.	2 * 2	85-5980	Skid - LH	1 25 1
16-1259	Plate - Mount, Gear Box	5 10 1	85-6010	Shaft - Spindle	7 10 3
23-1640	Bushing - Taperlock	5 18 1	85-6030	Pulley - Spindle	7 3 3
26-1530	Fork - Castor Front	2 22 2	85-6040	Blade - 25.18	7 12 3
28-9290	Bushing	2 24 4	85-6050	Cover - LH	4 4 1
36-1740	Roller	1 29 3	85-6060	Cover - LH Center	4 3 1
40-6400	Shaft - Roller	1 30 3	85-6070	Cover - RH Center	4 2 1
43-8480	Decal - Danger	3 1 4	85-6080	Cover - RH	4 1 1
54-8890	Bolt - Wheel	10 2 4	85-6120	Decal - Belt Routing	3 2 1
54-8900	Wheel Half - Male	10 7 1	85-6130	Decal - Height-Of-Cut	5 16 1
54-8910	Wheel Half - Female	10 5 1	85-6330	Bracket - W.A., Gear Box	5 13 1
54-8920	Hub - Centered	10 4 1	85-6390	Spring	1 1 1
54-8930	Retainer	10 1 2	85-6410	Decal - Danger	3 3 4
54-8940	Bearing - Roller	10 10 1	85-6430	Decal - Guardian	3 9 1
54-8950	Tube w/Valve	10 12 1	85-6460	Chamber - LH	3 5 1
54-8960	Tire	10 6 1	85-6470	Chamber - RH	3 8 1
54-9040	Yoke - End	6 8 1	85-6480	Chamber - Center	3 7 1
54-9180	Kit - Universal Joint	6 3 2	92-1655	10 Wheel Assembly	2 21 2
55-7080	Bushing - Spanner	10 11 1	92-1761	Fork - Castor, Rear	2 20 2
57-0690	Pin - Special	1 31 3	92-1765	Washer	2 10 4
62-3310	Screw - Cap	8 15 8	92-1766	Castor Arm Assembly RH	2 5 1
62-3340	Cup - Bearing	8 14 2	92-1768	Castor Arm Assembly LH	2 11 1
62-3360	Cup - Bearing	8 3 2	92-5581	Ring - Retaining	2 28 4
62-3370	Cone - Bearing	8 9 2	92-5583	Washer - Cap	2 29 4
62-3380	Key	8 8 2	92-5584	Spring - Compression	2 30 4
62-3400	Seal	8 13 2	92-5816	Screw - Blade	7 15 3
62-3410	Cap	8 16 2	92-7847	Decal - Warning	5 20 1
62-3420	Gasket (.015 in.)	8 4 A/R	92-8861	Cap - HOC	2 31 4
62-3430	Gasket (.005 in.)	8 5 A/R	92-8862	HOC Cap Assembly	2 * 2
62-3440	Gasket (.003 in.)	8 6 A/R	92-8866	Spacer	2 9 12
62-3490	Plug - Pipe (Solid)	8 2 4	92-9800	Spacer - Spindle Shaft	7 11 3
62-3800	Yoke - End	6 4 1	93-8457	Belt - Drive	5 1 1
62-3820	Fitting - Grease	6 2 2	93-8471	Bushing - Rubber	2 12 2
62-4340	Spanner	2 17 4	93-9340	Housing Assembly	1 27 1
62-5580	Bearing	2 14 8	93-9839	Shroud - Drive Shaft	5 9 1
63-0070	Spacer	2 26 12	93-9957	Shaft - Slip Yoke	6 1 1
63-1540	Pulley - Idler	1 13 2	93-9961	Tube - Slip Yoke	6 7 1
63-8410	Washer	5 12 4	93-9995	Drive Shaft & Guards (CE)	6 * 1
63-9750	Mount	5 3 4	251-321	Bearing - Ball	9 3 2
68-6810	Assembly - Gear Box	5 7 1	251-332	Spacer - Inner	9 4 1
68-7030	Housing	8 1 1	253-154	Seal - Wave	7 4 6
68-7040	Shaft	8 17 1	254-94	Cone - Bearing	8 12 2
68-7050	Shaft	8 19 1	256-188	Bushing	1 3 1
68-7060	Gear	8 18 1	283-82	Pin - Clevis	1 15 1
68-7070	Ring - Retaining	8 7 2	302-2	Fitting - Grease	7 1 3
68-7080	Gear	8 10 1	302-2	Fitting - Grease	1 7 1
68-8340	Decal - Torque	5 2 1	302-5	Fitting - Grease	9 2 1
68-8560	Bracket - RH, Gear Box	5 6 1	302-5	Fitting - Grease	2 25 2
69-1530	Housing - Spindle3	7 8 3	302-10	Fitting - Grease	10 3 1
69-6260	Magnet	4 8 4	302-40	Fitting - Grease	2 13 4
69-6870	Plate - Magnet	4 6 4	302-58	Fitting - Grease	6 6 1
69-6960	Spacer - Idler	1 12 3	321-8	Screw - Cap Hex. Hd.	1 16 1
69-9290	Pad - Bumper	1 21 1	322-9	Screw - Cap Hex. Hd.	6 10 2
70-2560	Decal - Lube	5 23 1	323-4	Screw - Cap Hex. Hd.	5 4 5
71-2530	Bearing Assembly	7 5 3	323-14	Screw - Cap Hex. Hd.	1 24 16
72-9361	Cup - Anti-Scalp	7 13 3	324-12	Screw - Cap Hex. Hd.	2 1 4
72-9370	Shim (.020 in.)	8 11 2	324-13	Screw - Cap Hex. Hd.	2 8 1
76-1880	10 Segmented Wheel Assy.	9 1 1	325-6	Screw - Cap Hex. Hd.	1 18 1
76-1880	Segmented Tire Assy. - 10	2 * 2	325-8	Screw - Cap Hex. Hd.	1 14 1
80-0040	Spacer	9 5 1	325-22	Screw - Cap Hex. Hd.	2 18 4
83-4740	Bearing - Roller	2 16 4	3217-6	Nut - Hex.	10 9 4
85-5760	8 Wheel Assembly	2 15 2	3230-18	Bolt - Carriage	3 6 16
85-5810	Mount - Ball Joint, LH	2 7 1	3230-23	Bolt - Carriage	3 10 2
85-5830	Bracket - Chain	2 3 2	3231-26	Bolt - Carriage	5 15 3
85-5860	Pulley - W.A.	5 17 1	3231-27	Bolt - Carriage	7 6 18
85-5900	Arm - Idler	1 4 1	3233-9	Bolt - Carriage	1 26 6
85-5920	Bracket - Idler Arm	1 10 2	3234-11	Screw - Flange Head	5 21 6

\*Not Illustrated

# PART NUMBER INDEX (Cont.)

Part No.	Description	Pg. Ref.		Part No.	Description	Pg. Ref.	
		No.	Qty.			No.	Qty.
3234-18	Screw - Cap Fl. Hd.	5	14 1	32108-103	Screw - Flat Head	1	20 2
3247-4	Screw - Set	5	19 2	32120-72	Ring - Retaining	1	6 1
3253-4	Washer - Lock	10	8 4	32121-34	Pin - Roll	6	5 2
3253-21	Washer - Lock	5	5 5	32128-19	Nut - Lock Fl. Hd.	1	22 16
3256-24	Washer - Flat	7	7 A/R	32128-21	Nut - Flange Head	7	9 18
3256-24	Washer - Flat	5	22 A/R	32128-21	Nut - Lock, Flange Head	5	11 10
3257-5	Key - Woodruff	8	20 1	32128-23	Nut - Lock, Flange Head	2	19 4
3269-25	Rivet - Pop	4	5 8	32128-25	Nut - Flange Head	3	4 18
3272-11	Pin - Cotter	1	28 2	32128-25	Nut - Flange Head	1	19 2
3290-467	Pin - Cotter	1	9 1	32128-32	Nut - Flange Head	1	8 1
3296-2	Nut - Lock	4	7 8	32128-42	Nut - Flange Head	2	6 3
3296-29	Nut - Lock	6	9 2	32128-49	Nut - Flange Head	1	11 8
3296-49	Nut - Lock	7	2 3	32148-7	Insert - Threaded	4	10 4
32104-82	Screw - Flange Head	5	8 2	32148-7	Insert - Threaded	1	32 12
32105-1	Screw - Hex. Hd. Machine	4	9 8				

## PRODUCT CHANGES

In an effort to make improvements available to TORO owners as quickly as possible, minor changes are incorporated into Toro's products from time to time that do not become immediately shown in the Parts Catalog. If such a change has been made in your unit, which is not reflected in your manual, see your TORO Distributor or his Authorized TORO Service Dealer for information and part numbers.

## IDENTIFICATION AND ORDERING

### MODEL AND SERIAL NUMBERS

The Guardian ® 72" Recycler ® has two identification numbers; a model number and a serial number. The two numbers are stamped on a plate which is located on the right hand side of the rear deck channel. In any correspondence concerning the Guardian ® 72" Recycler, supply model and serial numbers to assure that correct information and replacement parts are obtained.

To order replacement parts from an Authorized TORO Service Dealer, supply the following information:

1. Model and serial number of the Guardian ® 72" Recycler.
2. Part number, description, and the quantity of part(s) desired.

**NOTE:** Do not order by reference number if a parts catalog is being used; use the PART NUMBER.

## TABLE OF CONTENTS

Description	Page	Description	Page
Housing, Idler & Skids Assembly .....	1	Spindle Assembly .....	7
Castor Wheels & Arm Assembly .....	2	Gear Box Assembly No. 68-6810 .....	8
Chambers, Kickers & Decals .....	3	10" Segmented Front Caster Wheel (Optional) ....	9
Cover Assembly .....	4	Pneumatic Tire & Wheel Assembly (Optional) ....	10
Gear Box & Mount Assembly .....	5	Numerical Parts Index .....	11-12
Drive Shaft Assembly No. 85-5880 .....	6		





