



Count on it.

Form No. 3362-142 Rev B

Parts Catalog

Deluxe Hard Cab

Workman® MD/MDX/MDE Utility Vehicle

Model No. 07328

Ordering Replacement Parts

To order replacement parts, please supply the part number, the quantity, and the description of each part desired.

Understanding Reference Numbers

Each identified part in an illustration has a reference number. The reference number for a part also appears in the parts list, along with other information about the part.

This catalog uses two special reference number formats, one to indicate parts in a service assembly and another to indicate the quantity of a given part in an illustration.

Service Assembly Reference Numbers

Parts in service assemblies have reference numbers in the form a:b. The a represents the reference number of the entire service assembly and the b represents a sequential number unique to each part within the service assembly.

For example, a wheel assembly might be identified by reference number 6, the tire by 6:1, the valve by 6:2, and the wheel by 6:3. When you order the assembly identified by reference number 6, you receive all parts identified by reference numbers 6:1, 6:2, and 6:3. However, you may also order any part individually. Reference numbers of this type appear in illustration and in parts lists.

Reference Numbers Indicating Quantity

In an illustration, if a reference number indicates more than one part, the reference number has the form nX y. The n represents the quantity of the part, the X is the multiplication symbol, and the y represents the reference number.

For example, in an illustration, the reference number 2X 37 means that two of the parts identified by reference number 37 are indicated.

List of Abbreviations

AR: as required	HLH: hex lag head	PTO: power-take-off
ASM: assembly	HOC: height-of-cut	RH: right hand
BBC: blade brake clutch	HSBH: hex socket button head	ROPS: roll-over protection system
CARR: carriage	HSFH: hex socket flat head	SFH: slotted fillister head
CCW: counter clock wise	HSH: hex socket head	SHH: slotted hex head
CW: clockwise	HWH: hex washer head	SHWH: slotted hex washer head
DEG: degrees	HWHTF: hex washer head thread forming	SPH: slotted pan head
ECM: electronic control module	HYD: hydraulic	SQH: square head
EXT: external	LH: left hand	SRH: slotted round head
FH: flat head	NI: nylon insert	STD: standard
GA: gauge	NPTF: national pipe thread fine	TAP: self tapping
HD: heavy-duty	PFH: phillips flat head	TTH: torx truss head
HF: hex flange	PPH: phillips pan head	
HH: hex head	PPHTF: phillips pan head thread forming	
HHF: hex head flange	PRH: phillips round head	
HHFTF: hex head flange thread forming	PTH: phillips truss head	
HJ: hex jam		

Contents

Cab Assembly 4

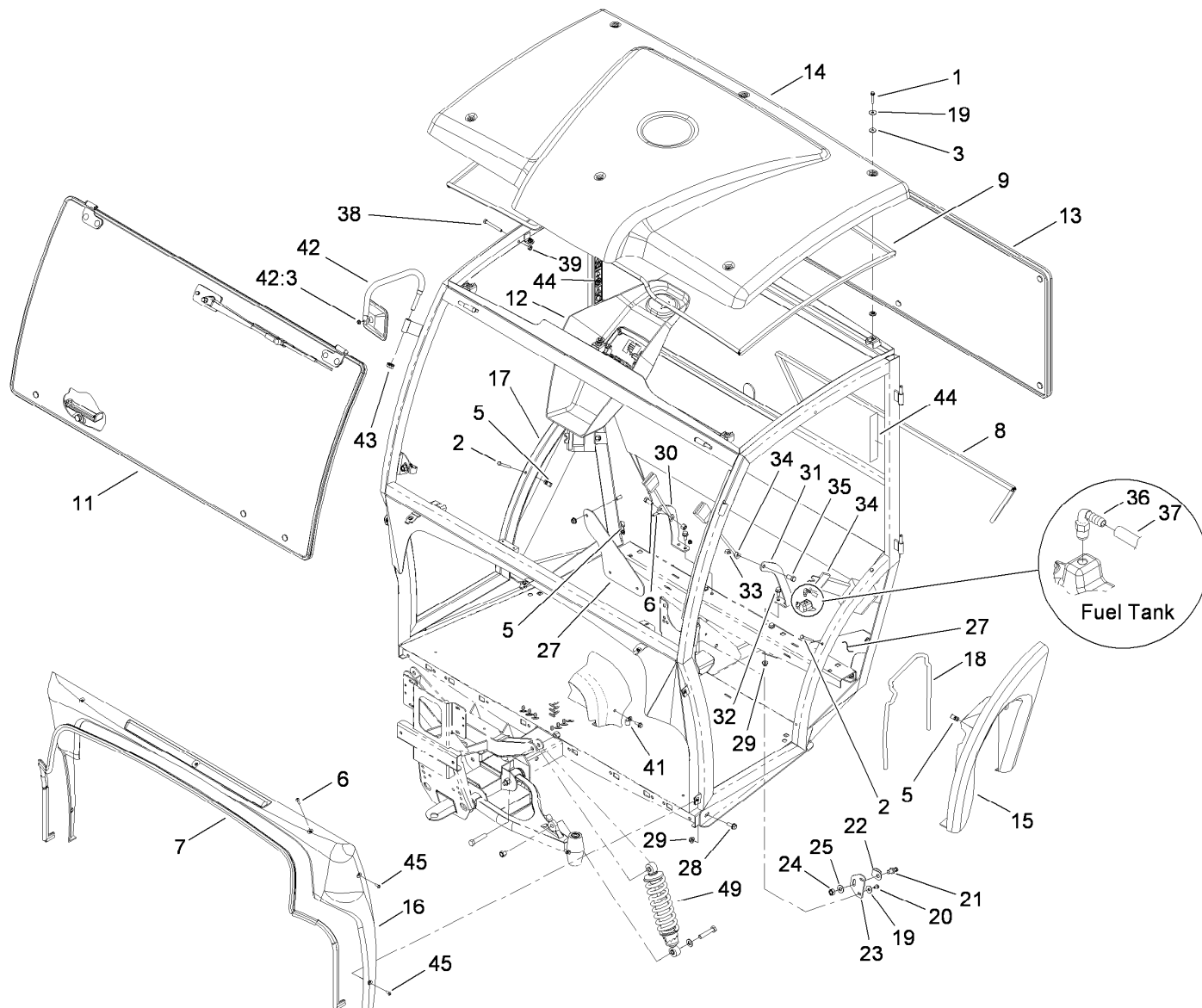
Front Winshield Assembly 6

Winshield Glass Kit Assembly No. 115-7930..... 7

Headliner Assembly 8

Switch Plate Assembly 9

Rear Window Assembly No. 115-7940..... 10

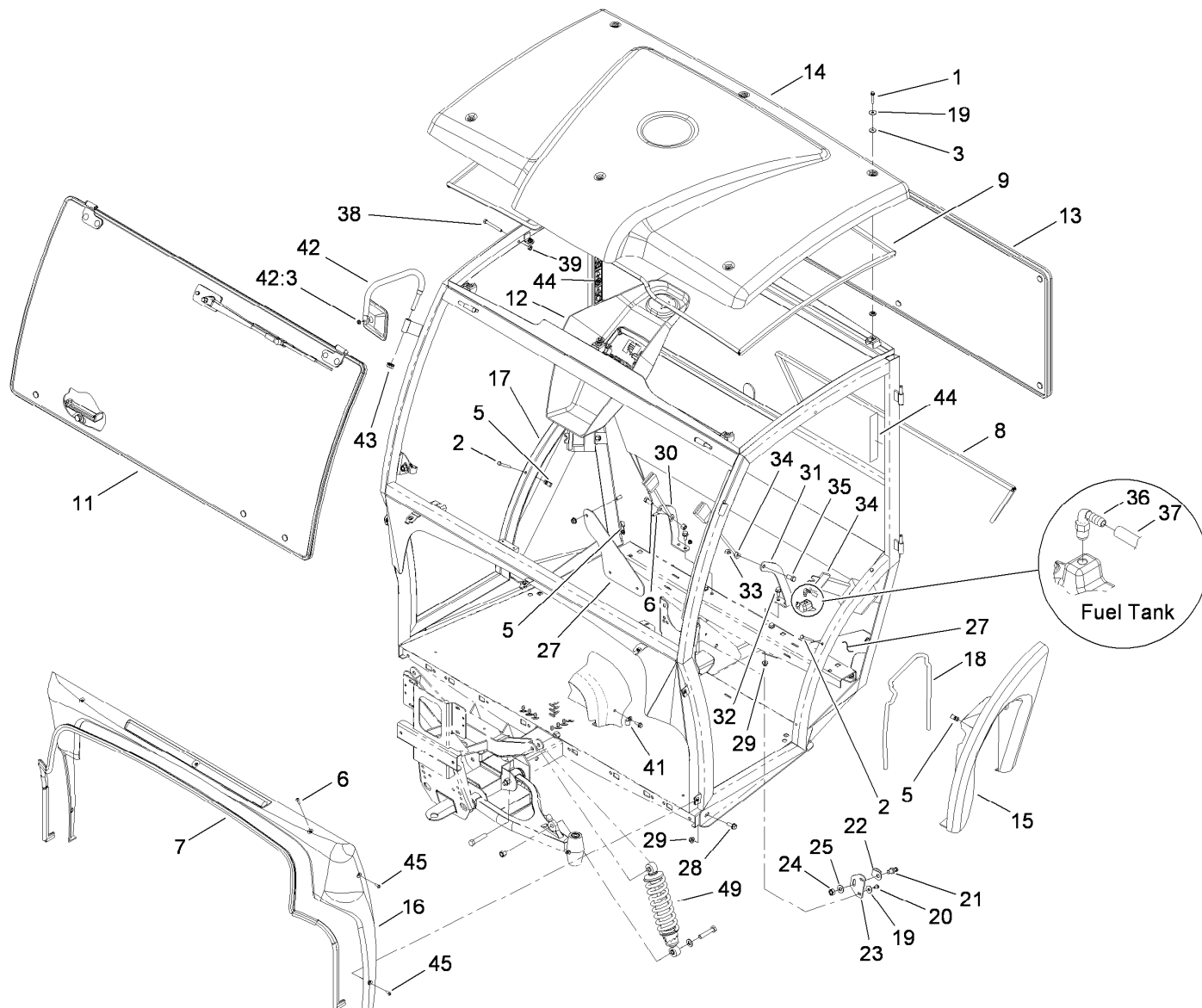


Cab Assembly

Ref.	Part Number	Qty.	Description
1	94-5781	6	Screw-HHF
2	321-15	6	Screw-HH
3	115-5570	12	Bushing-Thin
5	115-5586	25	Nut-Panel, Deep
6	3274-65	13	Screw-HSBH
7	115-7938	1	Trim-Front, Bulb Seal (102In)
8	115-7937	1	Trim-Rear, Bulb Seal (64.5In)
9	115-7936	1	Trim-Roof
11		1	Front Windshield ASM ●
12		1	Headliner ASM ●
13	115-7940	1	Rear Window ASM
14	115-7673	1	Roof
15	115-7697	1	Panel-Tank, LH
16	115-7699	1	Panel-Front
17	115-7698	1	Panel-Tank, RH
18	115-7939	1	Trim-Tank, Bulb Seal (36In)
19	115-5581	10	Washer-Flat

Ref.	Part Number	Qty.	Description
20	3234-13	4	Screw-HHF
21	115-5576	2	Striker
22	115-5577	2	Guard-Striker
23	117-2777	2	Plate-Striker
24	115-5579	2	Nut-HH
25	3256-26	2	Washer-Flat
27	117-5096	2	Support-Bracket, Rear
28	110-5052	10	Screw-HHF
29	104-8301	18	Nut-Flange, NI
30	99-7802-03	1	Anchor-Seat Belt, RH
31	99-7803-03	1	Anchor-Seat Belt, LH
32	3234-1	4	Screw-HHF
33	3296-48	4	Nut-Lock, NI
34	100-4928	2	Belt-Seat
35	324-4	4	Screw-HH
36	94-7222	1	Barb-Hose
37	108-4582	1	Hose-Fuel
38	323-12	2	Screw-HH
39	3217-7	2	Nut-Hex

● Not serviced separately

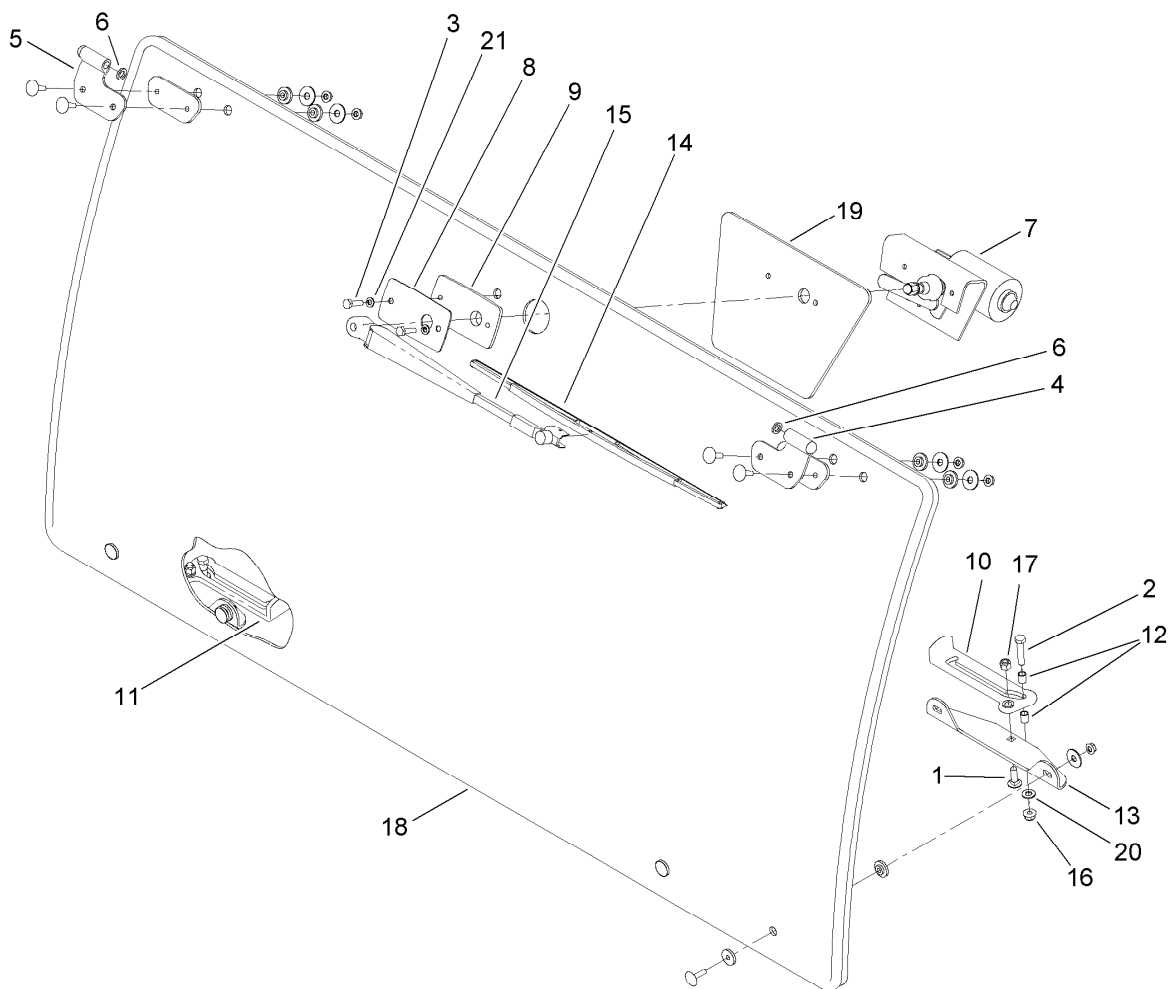


Cab Assembly (continued)

Ref.	Part Number	Qty.	Description
41	2412-93	1	Clamp-R
42	117-4959	2	Mirror And Arm ASM
42:3	32128-10	1	Nut-Lock, HHF
43	115-5582	2	Nut-Flange, Crimplock

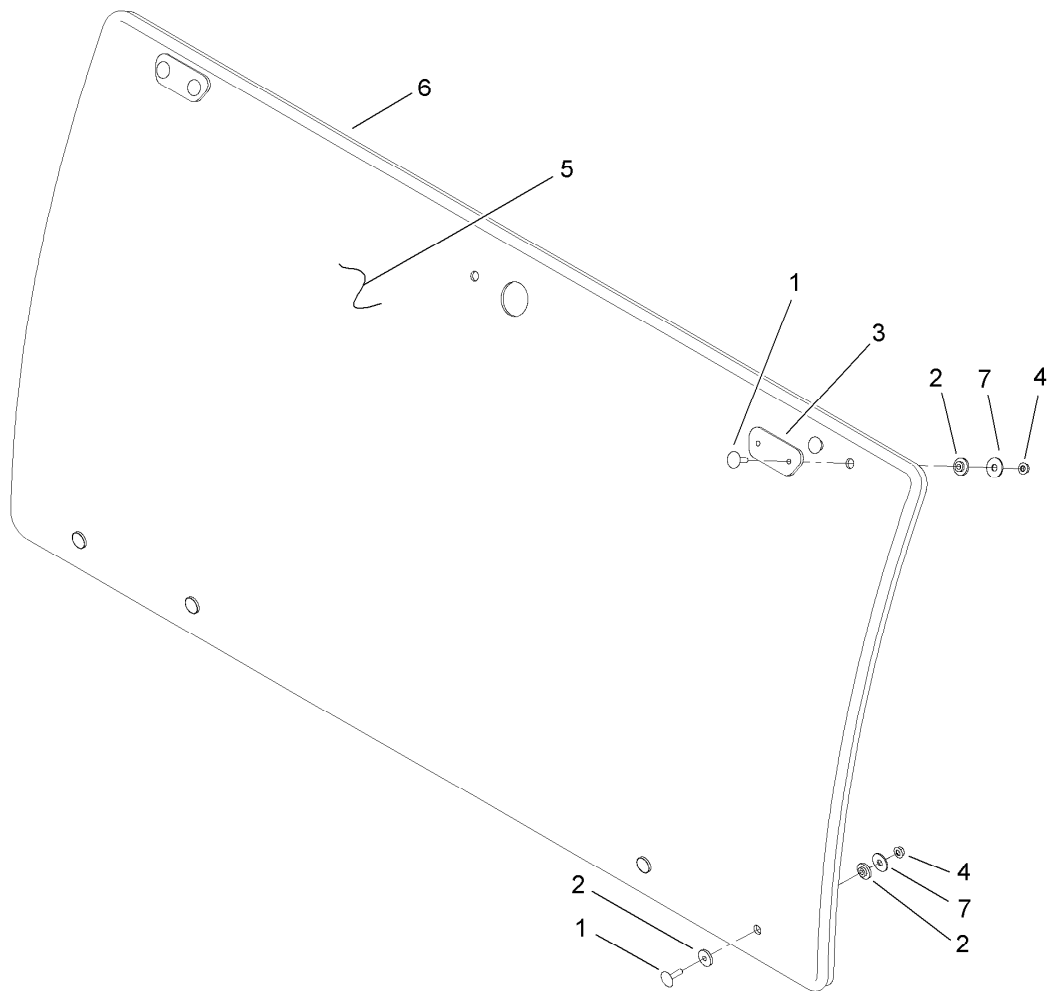
Ref.	Part Number	Qty.	Description
44	117-4955	2	Decal-Danger, ROPS (Ce)
45	3274-68	4	Screw-HSBH
49	117-5073	2	Spring

● Not serviced separately



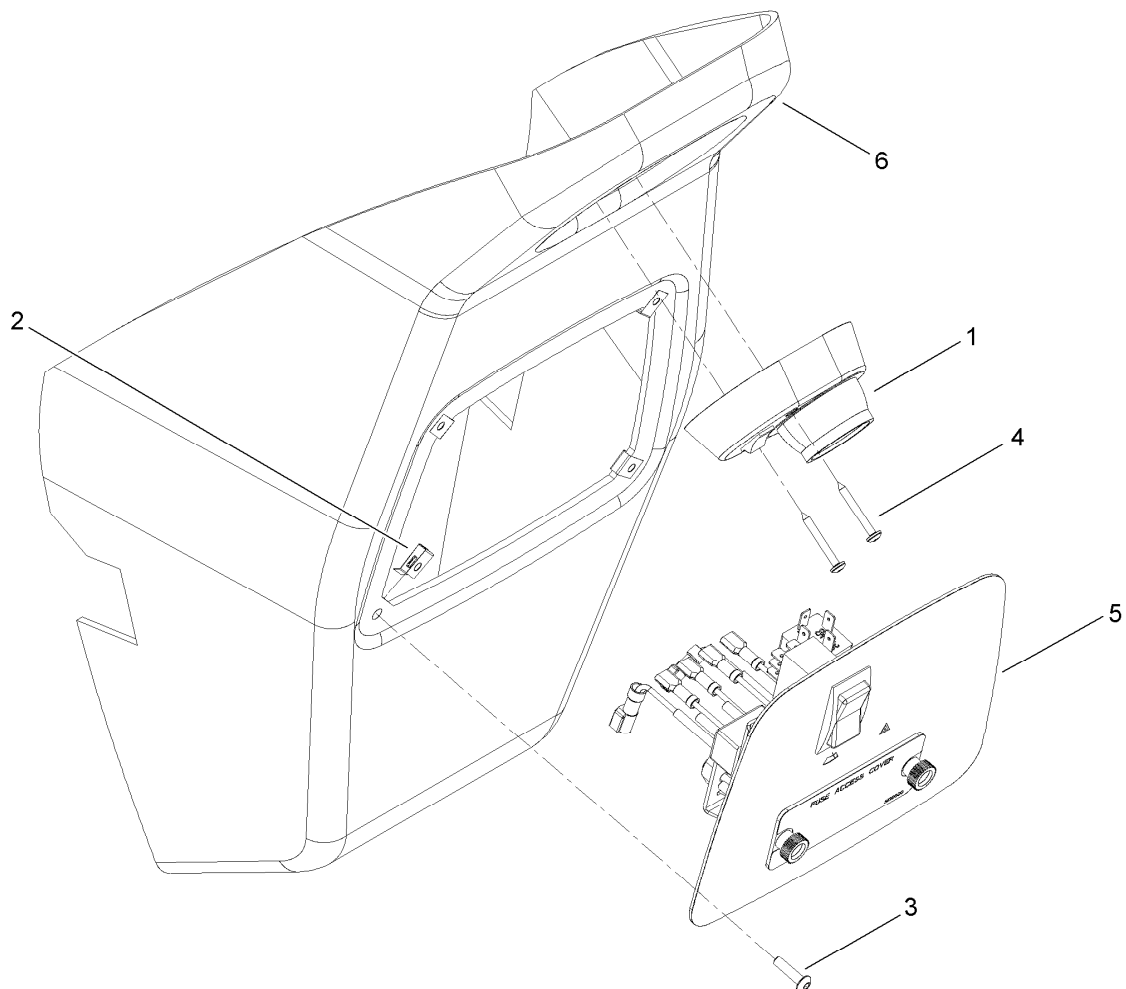
Front Windshield Assembly

Ref.	Part Number	Qty.	Description
1	3230-2	2	Bolt-CARR
2	322-7	2	Screw-HH
3	329-6	2	Screw-HH
4	115-7688	1	LH Hinge ASM
5	115-7689	1	RH Hinge ASM
6	115-7696	2	Washer-Hinge, Brass
7	115-8831	1	Motor-Wiper
8	115-7933	1	Plate-Mount, Wiper
9	115-7934	1	Bushing-Mount, Windshield
10	115-7694	1	Slider-Window, LH
11	115-7695	1	Slider-Window, RH
12	115-7693	4	Sleeve-Slide, Window
13	115-7692	2	Mount-Window Slider, Front
14	115-7691	1	Blade-Wiper
15	115-7686	1	Arm-Radial
16	104-8300	2	Nut-Flange, NI
17	3296-29	2	Nut-Lock, NI
18	115-7930	1	Windshield Glass Kit
19	115-7935	1	Cover-Motor, Wiper
20	3256-23	2	Washer-Flat
21	3253-3	2	Washer-Lock



Windshield Glass Kit Assembly No. 115-7930

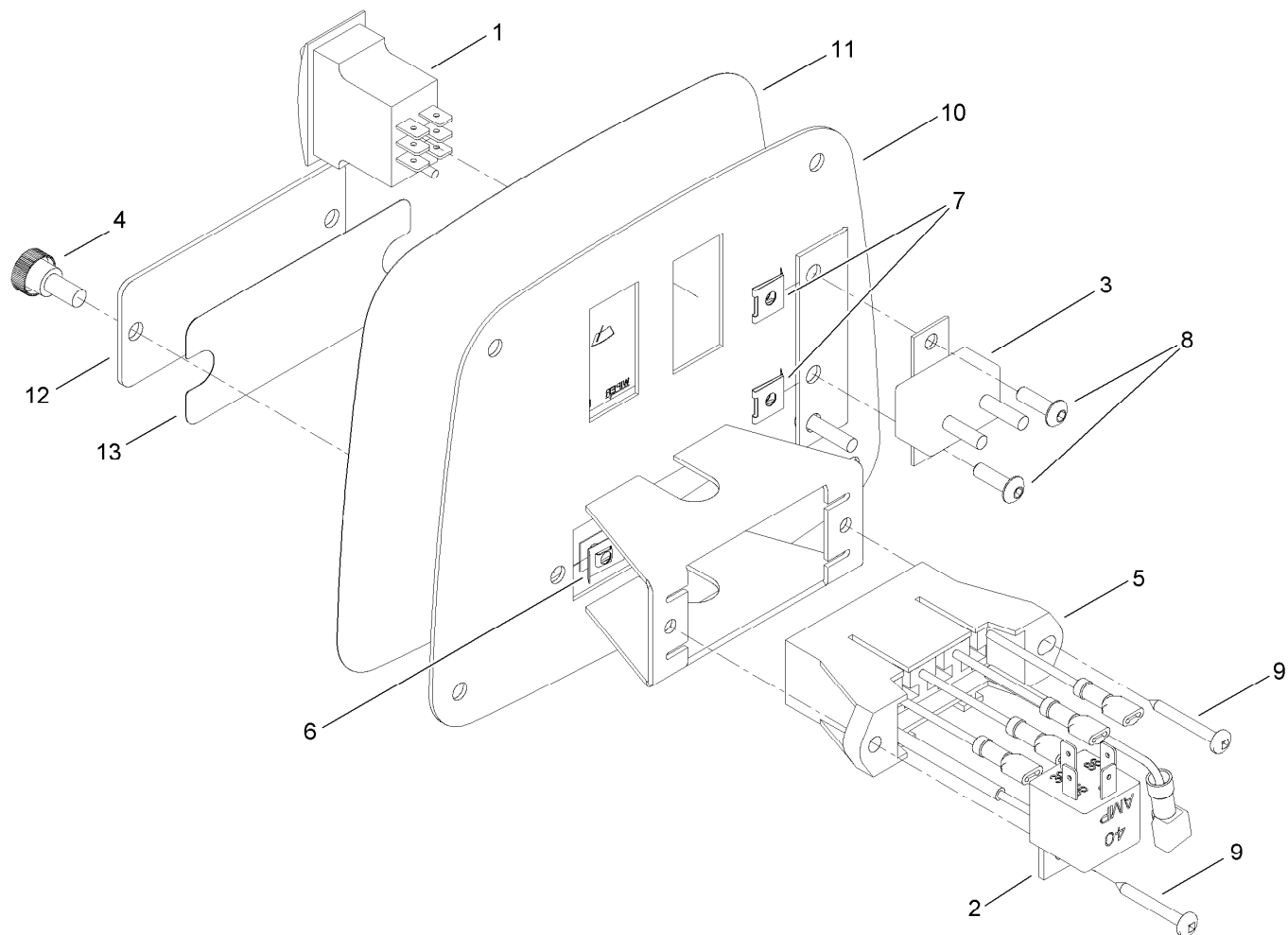
Ref.	Part Number	Qty.	Description
1	115-7685	8	Bolt-Step
2	115-5570	12	Bushing-Thin
3	115-7687	2	Mount-Glass, Bushing (Hinge)
4	115-5572	8	Nut-Flange
5	115-7931	1	Glass-Windshield
6	115-7932	1	Trim-Bulb Seal, Windshield
7	115-5581	4	Washer-Flat



Headliner Assembly

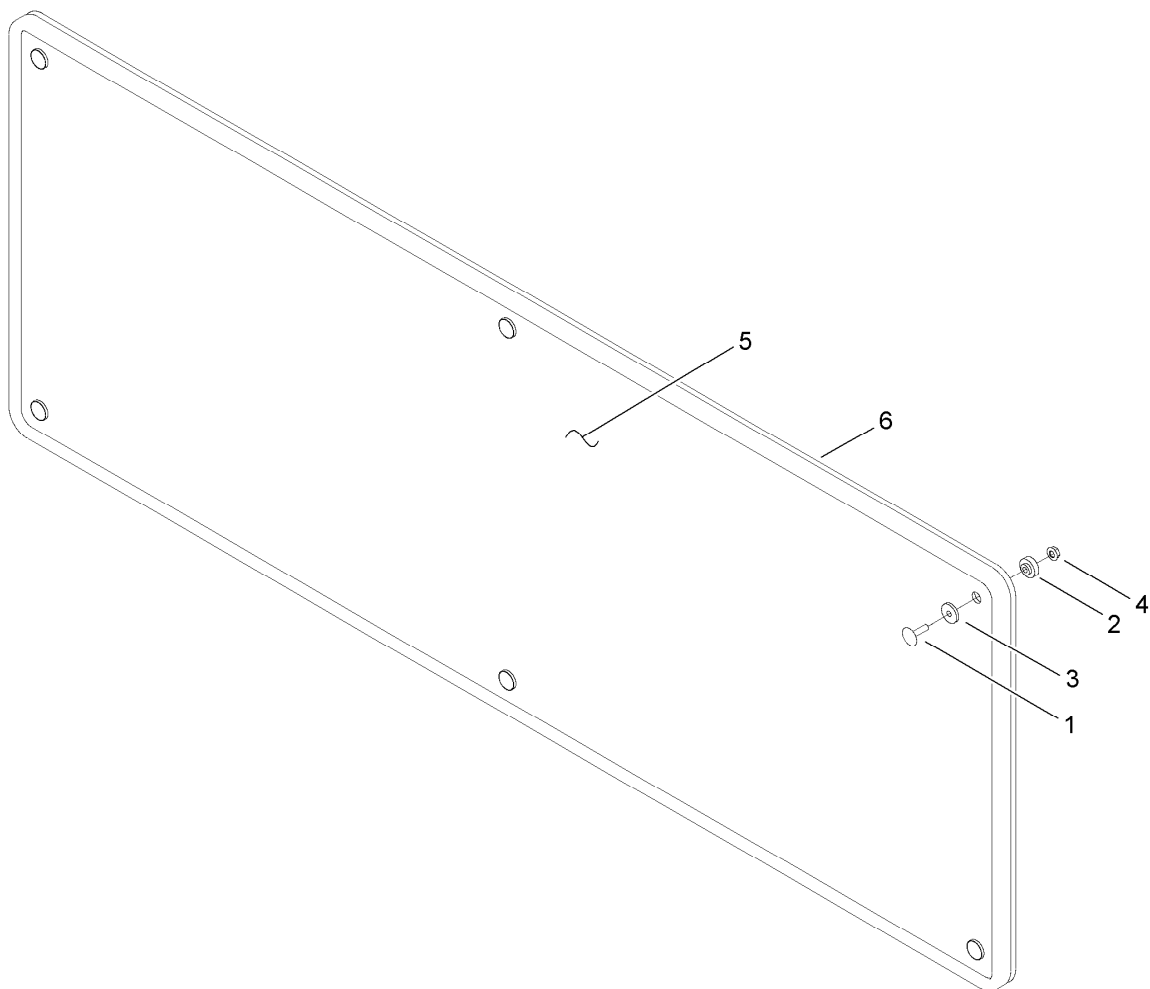
<i>Ref.</i>	<i>Part Number</i>	<i>Qty.</i>	<i>Description</i>
1	115-7946	1	Light-Dome
2	115-7952	4	Nut-Panel
3	104-2408	4	Screw-HSBH
4	115-5594	2	Screw-HSBH
5		1	Switch Plate ASM ●
6	115-7944	1	Headliner

● Not serviced separately



Switch Plate Assembly

Ref.	Part Number	Qty.	Description
1	115-7955	1	Switch-Momentary
2	115-7956	1	Relay-40 Amp
3	115-7951	1	Circuit Breaker-40 Amp
4	115-5506	2	Knob
5	115-7953	1	Fuse Block ASM
6	115-7952	2	Nut-Panel
7	115-5505	2	Nut-Panel, Spring
8	3274-39	2	Screw-HSBH
9	115-5594	2	Screw-HSBH
10	115-7947	1	Plate-Switch
11	115-7948	1	Decal-Plate, Switch
12	115-7957	1	Cover-Access, Fuse
13	115-7958	1	Decal-Block, Fuse



Rear Window Assembly No. 115-7940

<i>Ref.</i>	<i>Part Number</i>	<i>Qty.</i>	<i>Description</i>
1	115-7685	6	Bolt-Step
2	115-5574	6	Bushing-Thick
3	115-5570	6	Bushing-Thin
4	115-5572	6	Nut-Flange
5	115-7941	1	Glass-Window, Rear
6	115-7942	1	Trim-Bulb Seal (155In), Rear Window

Notes:



Count on it.