



**Wheel Horse[®]
Yard And Garden Tractor
42" Snowthrower**

Model No. 79262-5900001 & Up

Parts Catalog

ORDERING REPLACEMENT PARTS

To order replacement parts, please supply: the part number, the quantity, and the description of each part desired.

Note:

Part Description Abbreviations

Part descriptions in this catalog may include the following abbreviations.

Abbreviation	Meaning	Abbreviation	Meaning
AR	as required	HWHTF	hex washer head thread forming
ASM	assembly	INCL	includes
CARR	carriage	LH	left hand
DEG	degrees	PH	pan head
FH	flat head	PPH	Phillips pan head
GA	gauge	PTO	power take off
HF	hex flange	RH	right hand
HFV	hex flange washer	SFH	slotted fillister head
HH	hex head	SH	square head
HHF	hex head flange	SHWH	slotted hex washer head
HHST	hex head self tapping	SPH	slotted pan head
HJ	hex jam	STD	standard
HOC	height-of-cut	TAP	self tapping
HS	hex socket	TH	truss head
HSBH	hex socket button head	TTH	Torx truss head
HSFH	hex socket flat head	WH	wing head
HSH	hex socket head		
HWH	hex washer head		

Important Format Explanations

This catalog uses special formats to convey information in illustrations and parts lists. Specifically, one format is used in conjunction with service assemblies and another with quantities associated with reference numbers.

Service Assemblies

Parts within service assemblies have reference numbers in the form *X:Y*. *X* is the reference number of the service assembly and *Y* is a sequential number unique to each part within the service assembly.

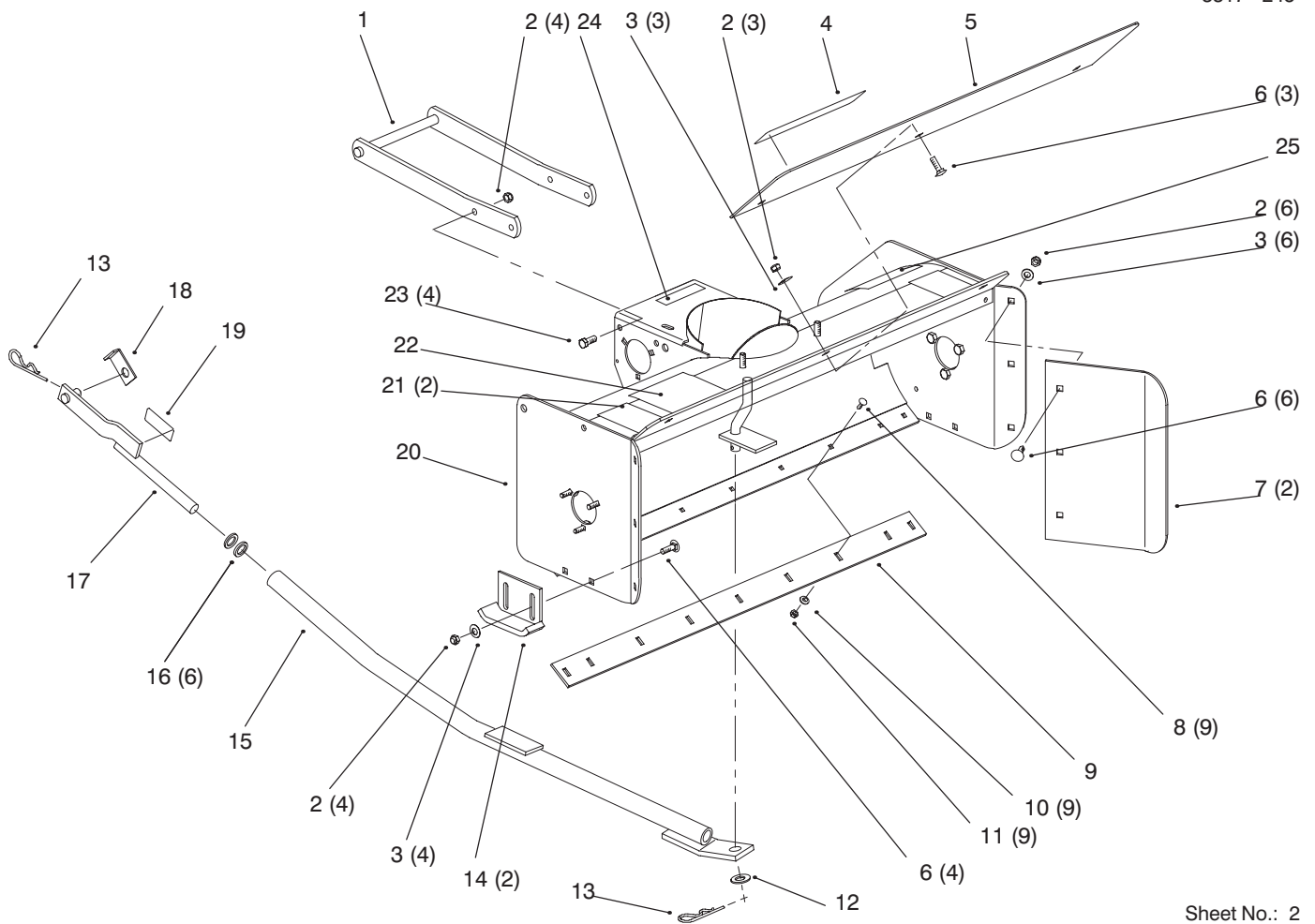
For example, a wheel assembly might be identified by reference number 6, the tire by 6:1, the valve by 6:2, and the wheel by 6:3. When you order the assembly identified by reference number 6, you receive all parts identified by reference numbers 6:1, 6:2, and 6:3. However, you may also order any part individually.

Reference numbers of this type appear in part lists and as callouts in illustrations.

Reference Numbers with Quantities

Illustrations may have a quantity in parentheses next to a reference number, in the form *X (Y)*. *X* is the reference number. *Y* in parentheses is the quantity of the part identified by the reference number.

For example, the illustration callout 4 (2) indicates that two parts are used in that instance.

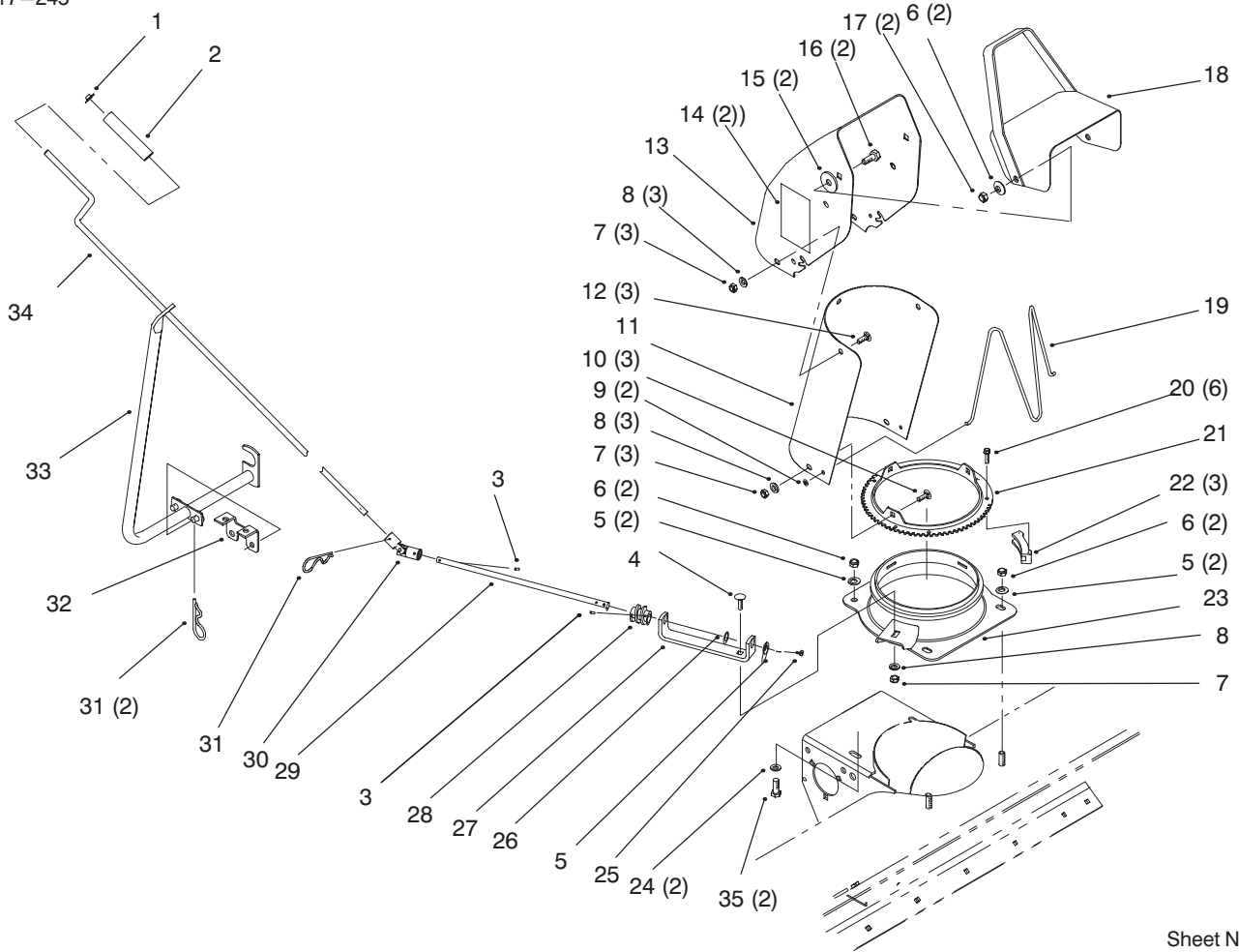


Sheet No.: 2

Auger Housing

Ref. No.	Part No.	Description	No. Used
1	79-6800-01	Mounting Frame	1
2	3296-39	Nut-Lock	18
3	3256-24	Washer-Flat	13
4	92-8748	Decal-Attachment	1
5	93-1616-01	Plate-Extension	1
6	3231-2	Screw-CARR	13
7	93-1617-01	Plate-Extension	2
8	3229-25	Screw-CARR	9
9	79-6170-01	Scraper-Reversible	1
10	3256-22	Washer-Flat	9
11	3296-42	Nut-Hex Lock	9
12	3256-27	Washer-Flat	1
13	9335064	Hairpin-Cotter	2

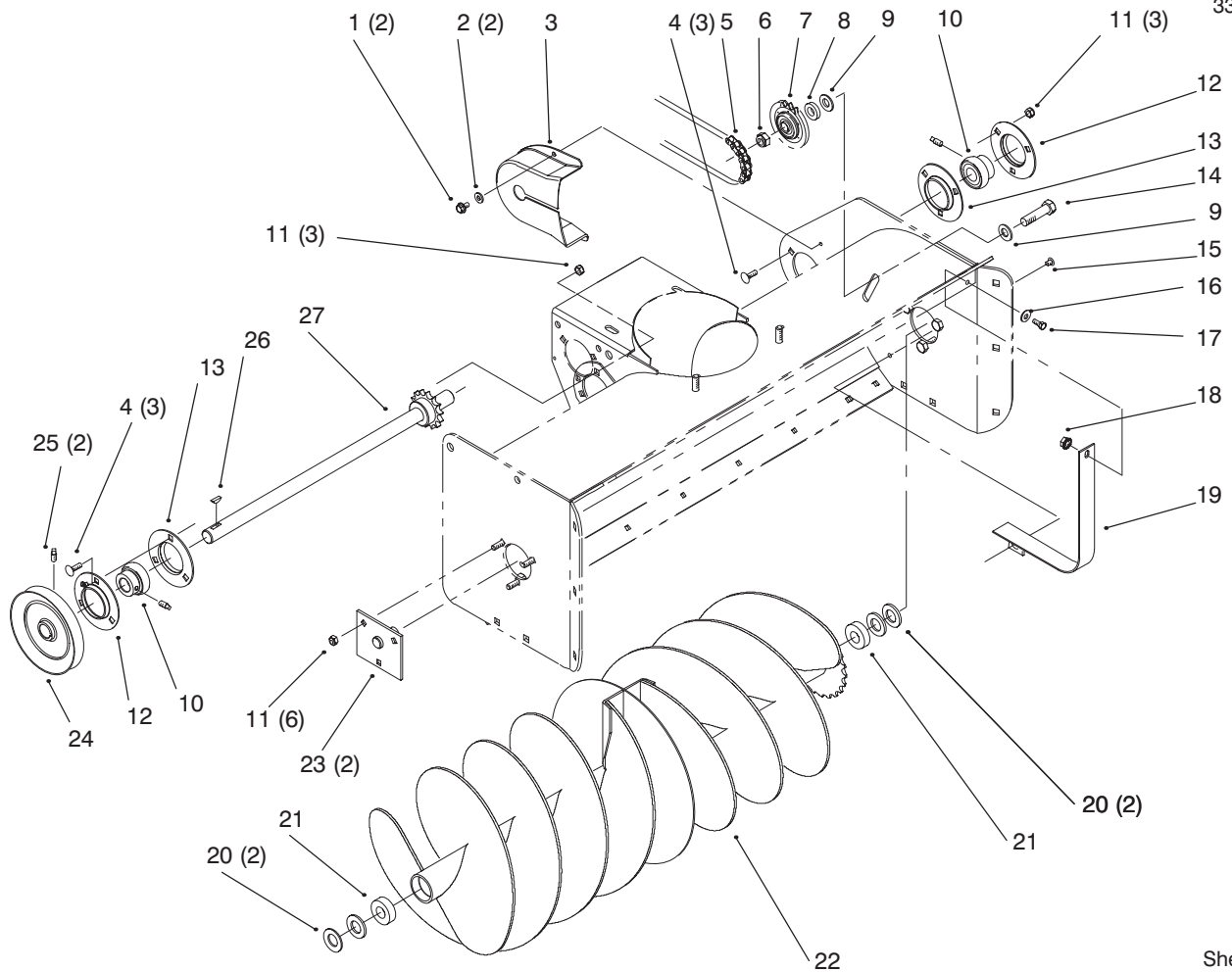
Ref. No.	Part No.	Description	No. Used
14	93-1620-01	Skid	2
15	79-3251-03	Rod	1
16	9202324	Washer	6
17	79-3430-03	Rod	1
18	92-9778-03	Asm-Lift Rod/Decal	1
19	79-7090	Clip-Retainer	1
20	92-9777-01	Auger Housing ASM (Incl. Ref.# 21, 22 & 25)	1
21	63-2380	Decal-Danger	2
22	92-8652	Decal-Warning	1
23	323-6	Screw-HH	4
25	86-5100	Decal-Warning	1



Chute And Direction Control

Ref. No.	Part No.	Description	No. Used
1	3290-320	Nut-Push On	1
2	40-8230	Grip-Control	1
3	32121-50	Pin-Roll	2
4	3230-2	Screw-CARR	1
5	3256-24	Washer-Flat	5
6	3296-39	Nut-Lock	6
7	3296-29	Nut-Hex Lock	7
8	3256-23	Washer-Flat	7
9	3290-326	Nut-Push	2
10	3230-1	Screw-CARR	3
11	26-1110-01	Extender-Chute	1
12	322-2	Screw-HH	3
13	92-6335-01	Discharge Chute/Decal As	1
14	63-3740	Decal-Danger	2
15	20-4320	Washer-RUBBER	2
16	3231-2	Screw-CARR	2
17	3290-340	Washer-Belleville	2
18	11-7120-01	Deflector	1

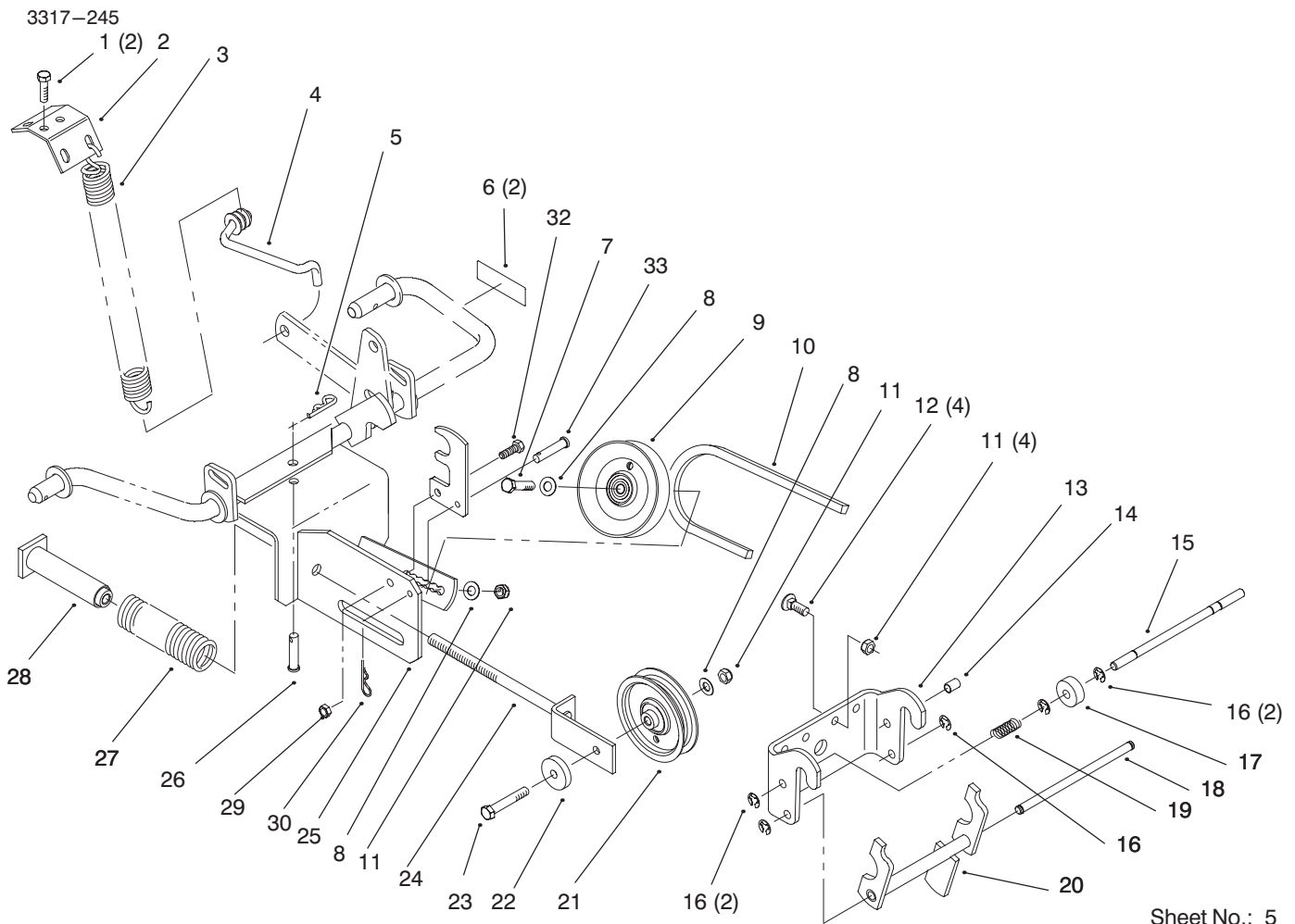
Ref. No.	Part No.	Description	No. Used
19	12-2040	Wire-Guard	1
20	27-0220	Screw-HWH	6
21	78-0160-01	Ring-Swivel	1
22	25-5450	Retainer-Chute	3
23	78-0330-01	Adapter	1
24	9202414	Washer-Spacer	2
25	3272-10	Pin-Cotter	1
26	3290-212	Washer	1
27	79-3770-03	Bracket-Worm	1
28	8-8600	Gear-Worm	1
29	92-7046	Rod	1
30	78-0230	Joint-Universal	1
31	9335054	Hairpin	3
32	78-0441-03	Bracket	1
33	92-7043-03	Support	1
34	79-4090	Rod-Control	1
35	323-6	Screw-HH	2



Auger

Ref. No.	Part No.	Description	No. Used
1	9266714	Screw-HWHTF	2
2	3256-22	Washer-Flat	2
3	79-4000	Guard-Chain	1
4	3230-1	Screw-CARR	6
5	115165	Chain	1
6	3296-23	Nut-HH	1
7	93-1614-01	Sprocket-Idler	1
8	6417	Spacer	1
9	3256-26	Washer-Flat	2
10	110569	Bearing & Collar	2
11	3296-29	Nut-Hex Lock	12
12	110567	Flange-Relube W/Zerk	2
13	110568	Flange-Plain W/O Zerk	2
14	325-8	Screw-HH	1

Ref. No.	Part No.	Description	No. Used
15	1391	Screw	1
16	3256-2	Washer-Flat	1
17	321-3	Screw-HH	1
18	32149-2	Nut-Hex	1
19	93-1619-01	Guard	1
20	3256-28	Washer-Flat	4
21	101480	Bearing-Ball	2
22	93-1615-01	Auger	1
23	93-1618-01	Support	2
24	113356	Pulley	1
25	3242-2	Screw-Sqh Set	2
26	937159	Key	1
27	79-4840-01	Shaft W/Sprocket	1



Sheet No.: 5

Mounting Hitch and Idler Support

Ref. No.	Part No.	Description	No. Used
1	322-6	Screw-HH	2
2	93-1123-03	Bracket	1
3	92-9821	Spring-Extension	1
4	93-3161	Rod	1
5	9335054	Hairpin	1
6	85-7490	Decal-Warning	2
7	323-9	Screw-HH	1
8	3256-24	Washer-Flat	3
9	92-7099	Pulley-Idler	1
10	78-6240	"V" Belt	1
11	3296-39	Nut-Lock	6
12	3231-22	Bolt-CARR	4
13	78-1720-01	Hitch-Front	1
14	105316	Cap-Rod	1
15	101751	Rod-Lock	1
16	105797	Ring-Ext Ret	5
17	101707	Lock-Attachment	1

Ref. No.	Part No.	Description	No. Used
18	101750	Rod-Latch Pivot	1
19	8616	Spring	1
20	93-1613	Latch	1
21	92-7084	Pulley-Idler	1
22	79-3720	Bushing	1
23	323-11	Screw	1
24	79-3230	Slide	1
25	93-0530-03	Support Idler	1
26	9329664	Pin-Clevis	1
27	93-1621	Spring-Compression	1
28	79-3270-03	Spring Tensioner	1
29	3296-29	Nut-Hex Lock	1
30	9335044	Hairpin	1
31	93-0528-03	Catch-Idler Support	1
32	322-5	Screw-HH	1
33	9321204	Pin-Clevis	1

TORO PART NUMBER INDEX

3317-245

Part No.	Description	Pg. Ref. No. No. Qty.	Part No.	Description	Pg. Ref. No. No. Qty.
1391	Screw	3 15 1	92-8652	Decal-Warning	1 22 1
6417	Spacer	3 8 1	92-8748	Decal-Attachment	1 4 1
8616	Spring	4 19 1	92-9777-01	Auger Housing ASM	1 20 1
101480	Bearing-Ball	3 21 2	92-9778-03	Asm-Lift Rod/Decal	1 17 1
101707	Lock-Attachment	4 17 1	92-9821	Spring-Extension	4 3 1
101750	Rod-Latch Pivot	4 18 1	93-0528-03	Catch-Idler Support	4 31 1
101751	Rod-Lock	4 15 1	93-0530-03	Support Idler	4 25 1
105316	Cap-Rod	4 14 1	93-1123-03	Bracket	4 2 1
105797	Ring-Ext Ret	4 16 5	93-1613	Latch	4 20 1
110567	Flange-Relube W/Zerk	3 12 2	93-1614-01	Sprocket-Idler	3 7 1
110568	Flange-Plain W/O Zerk	3 13 2	93-1615-01	Auger	3 22 1
110569	Bearing & Collar	3 10 2	93-1616-01	Plate-Extension	1 5 1
113356	Pulley	3 24 1	93-1617-01	Plate-Extension	1 7 2
115165	Chain	3 5 1	93-1618-01	Support	3 23 2
937159	Key	3 26 1	93-1619-01	Guard	3 19 1
9202324	Washer	1 16 6	93-1620-01	Skid	1 14 2
9202414	Washer-Spacer	2 24 2	93-1621	Spring-Compression	4 27 1
9266714	Screw-HWHTF	3 1 2	93-3161	Rod	4 4 1
9321204	Pin-Clevis	4 33 1	321-3	Screw-HH	3 17 1
9329664	Pin-Clevis	4 26 1	322-2	Screw-HH	2 12 3
9335044	Hairpin	4 30 1	322-5	Screw-HH	4 32 1
9335054	Hairpin	4 5 1	322-6	Screw-HH	4 1 2
9335054	Hairpin	2 31 3	323-6	Screw-HH	1 23 4
9335064	Hairpin-Cotter	1 13 2	323-6	Screw-HH	2 35 2
8-8600	Gear-Worm	2 28 1	323-9	Screw-HH	4 7 1
11-7120-01	Deflector	2 18 1	323-11	Screw	4 23 1
12-2040	Wire-Guard	2 19 1	325-8	Screw-HH	3 14 1
79-6800-01	Mounting Frame	1 1 1	3229-25	Screw-CARR	1 8 9
20-4320	Washer-Rubber	2 15 2	3230-1	Screw-CARR	3 4 6
25-5450	Retainer-Chute	2 22 3	3230-1	Screw-CARR	2 10 3
26-1110-01	Extender-Chute	2 11 1	3230-2	Screw-CARR	2 4 1
27-0220	Screw-HWH	2 20 6	3231-2	Screw-CARR	1 613
40-8230	Grip-Control	2 2 1	3231-2	Screw-CARR	2 16 2
63-2380	Decal-Danger	1 21 2	3231-22	Bolt-CARR	4 12 4
63-3740	Decal-Danger	2 14 2	3242-2	Screw-Sqh Set	3 25 2
78-0160-01	Ring-Swivel	2 21 1	3256-2	Washer-Flat	3 16 1
78-0230	Joint-Universal	2 30 1	3256-22	Washer-Flat	3 2 2
78-0330-01	Adapter	2 23 1	3256-22	Washer-Flat	1 10 9
78-0441-03	Bracket	2 32 1	3256-23	Washer-Flat	2 8 7
78-1720-01	Hitch-Front	4 13 1	3256-24	Washer-Flat	1 313
78-6240	v Belt	4 10 1	3256-24	Washer-Flat	2 5 5
79-3230	Slide	4 24 1	3256-24	Washer-Flat	4 8 3
79-3251-03	Rod	1 15 1	3256-26	Washer-Flat	3 9 2
79-3270-03	Spring Tensioner	4 28 1	3256-27	Washer-Flat	1 12 1
79-3430-03	Rod	1 17 1	3256-28	Washer-Flat	3 20 4
79-3720	Bushing	4 22 1	3272-10	Pin-Cotter	2 25 1
79-3770-03	Bracket-Worm	2 27 1	3290-212	Washer	2 26 1
79-4000	Guard-Chain	3 3 1	3290-320	Nut-Push On	2 1 1
79-4090	Rod-Control	2 34 1	3290-326	Nut-Push	2 9 2
79-4840-01	Shaft W/Sprocket	3 27 1	3290-340	Washer-Belleville	2 17 2
79-6170-01	Scraper-Reversible	1 9 1	3296-23	Nut-HH	3 6 1
79-7090	Clip-Retainer	1 18 1	3296-29	Nut-Hex Lock	2 7 7
85-7480	Decal-Warning	1 19 1	3296-29	Nut-Hex Lock	3 1112
85-7490	Decal-Warning	4 6 2	3296-29	Nut-Hex Lock	4 29 1
86-5100	Decal-Warning	1 25 1	3296-39	Nut-Lock	1 218
92-6335-01	Discharge Chute Asm	2 13 1	3296-39	Nut-Lock	2 6 6
92-7043-03	Support	2 33 1	3296-39	Nut-Lock	4 11 6
92-7046	Rod	2 29 1	3296-42	Nut-Hex Lock	1 11 9
92-7084	Pulley-Idler	4 21 1	32121-50	Pin-Roll	2 3 2
92-7099	Pulley-Idler	4 9 1	32149-2	Nut-Hex	3 18 1

*Not Illustrated

