



**Count on it.**

# Parts Catalog

## Grass Collection System

Reelmaster® 2300/3100-D

Model No. 03227

# Ordering Replacement Parts

To order replacement parts, please supply the part number, the quantity, and the description of each part desired.

## Understanding Reference Numbers

Each identified part in an illustration has a reference number. The reference number for a part also appears in the parts list, along with other information about the part.

This catalog uses two special reference number formats, one to indicate parts in a service assembly and another to indicate the quantity of a given part in an illustration.

## Service Assembly Reference Numbers

Parts in service assemblies have reference numbers in the form a:b. The a represents the reference number of the entire service assembly and the b represents a sequential number unique to each part within the service assembly.

For example, a wheel assembly might be identified by reference number 6, the tire by 6:1, the valve by 6:2, and the wheel by 6:3. When you order the assembly identified by reference number 6, you receive all parts identified by reference numbers 6:1, 6:2, and 6:3. However, you may also order any part individually. Reference numbers of this type appear in illustration and in parts lists.

## Reference Numbers Indicating Quantity

In an illustration, if a reference number indicates more than one part, the reference number has the form nX y. The n represents the quantity of the part, the X is the multiplication symbol, and the y represents the reference number.

For example, in an illustration, the reference number 2X 37 means that two of the parts identified by reference number 37 are indicated.

# List of Abbreviations

<b>AR:</b> as required	<b>HLH:</b> hex lag head	<b>PTO:</b> power-take-off
<b>ASM:</b> assembly	<b>HOC:</b> height-of-cut	<b>RH:</b> right hand
<b>BBC:</b> blade brake clutch	<b>HSBH:</b> hex socket button head	<b>ROPS:</b> roll-over protection system
<b>CARR:</b> carriage	<b>HSFH:</b> hex socket flat head	<b>SFH:</b> slotted fillister head
<b>CCW:</b> counter clock wise	<b>HSH:</b> hex socket head	<b>SHH:</b> slotted hex head
<b>CW:</b> clockwise	<b>HWH:</b> hex washer head	<b>SHWH:</b> slotted hex washer head
<b>DEG:</b> degrees	<b>HWHTF:</b> hex washer head thread forming	<b>SPH:</b> slotted pan head
<b>ECM:</b> electronic control module	<b>HYD:</b> hydraulic	<b>SQH:</b> square head
<b>EXT:</b> external	<b>LH:</b> left hand	<b>SRH:</b> slotted round head
<b>FH:</b> flat head	<b>NI:</b> nylon insert	<b>STD:</b> standard
<b>GA:</b> gauge	<b>NPTF:</b> national pipe thread fine	<b>TAP:</b> self tapping
<b>HD:</b> heavy-duty	<b>PFH:</b> phillips flat head	<b>TTH:</b> torx truss head
<b>HF:</b> hex flange	<b>PPH:</b> phillips pan head	
<b>HH:</b> hex head	<b>PPHTF:</b> phillips pan head thread forming	
<b>HHF:</b> hex head flange	<b>PRH:</b> phillips round head	
<b>HHFTF:</b> hex head flange thread forming	<b>PTH:</b> phillips truss head	
<b>HJ:</b> hex jam		

# Contents

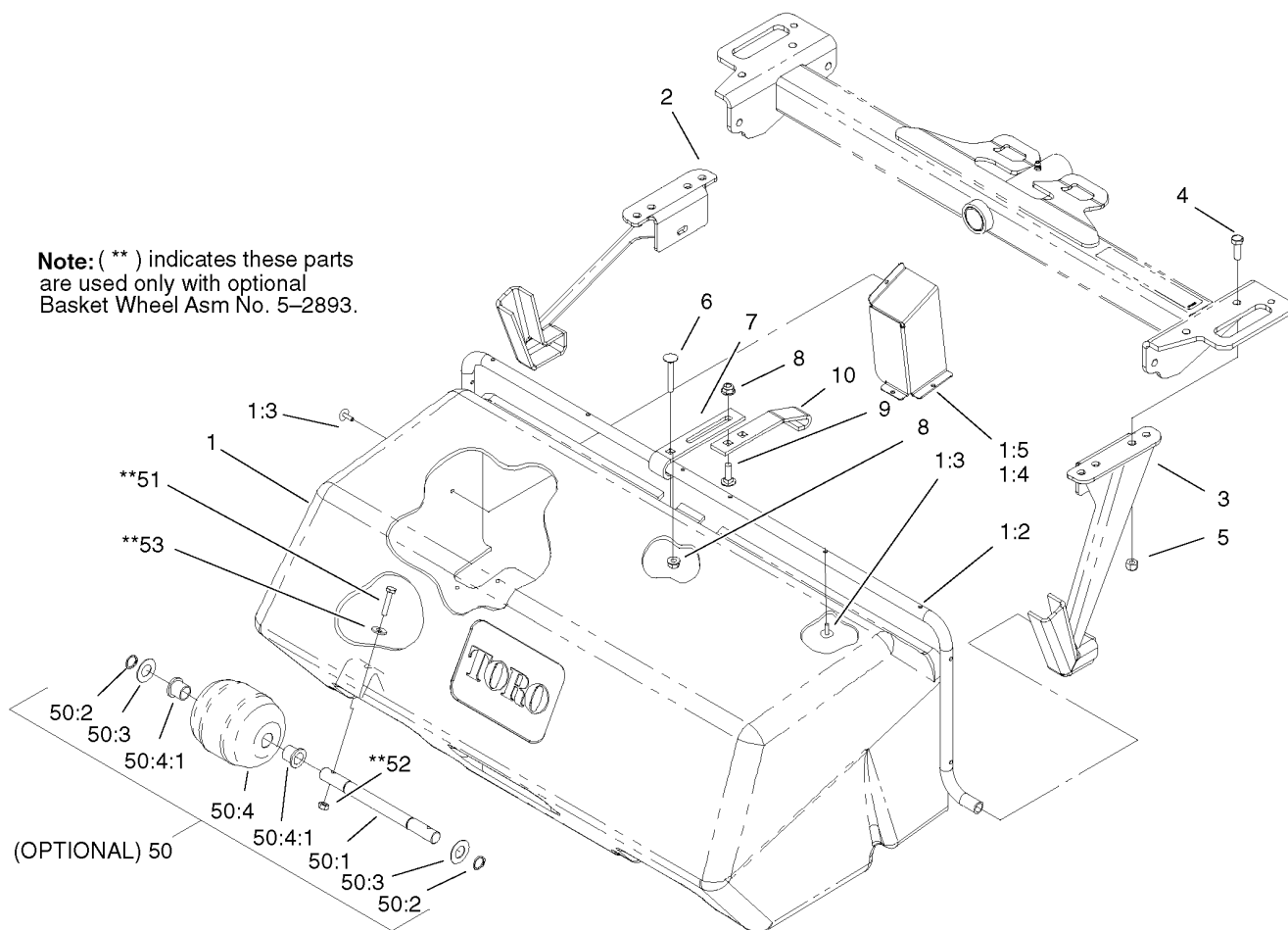
Front Basket Assembly ..... 4

Rear Grass Basket Assembly..... 5

Rear Grass Basket Assembly No. 105-6860..... 6

Top Basket Assembly No. 105-6875..... 7

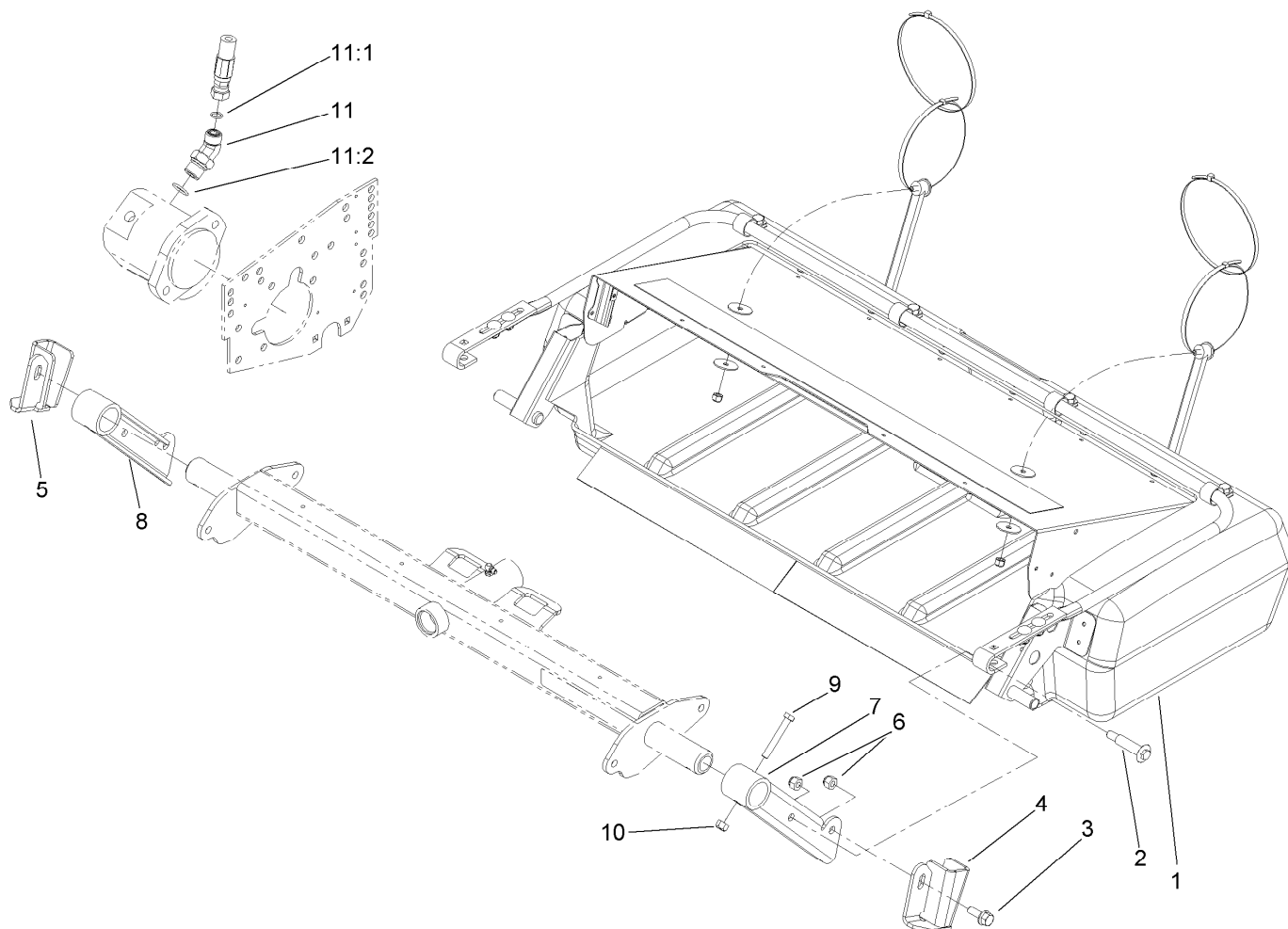
Rear Roller Bumper Assembly (For Reelmaster 3100-D Only)..... 8



## Front Basket Assembly

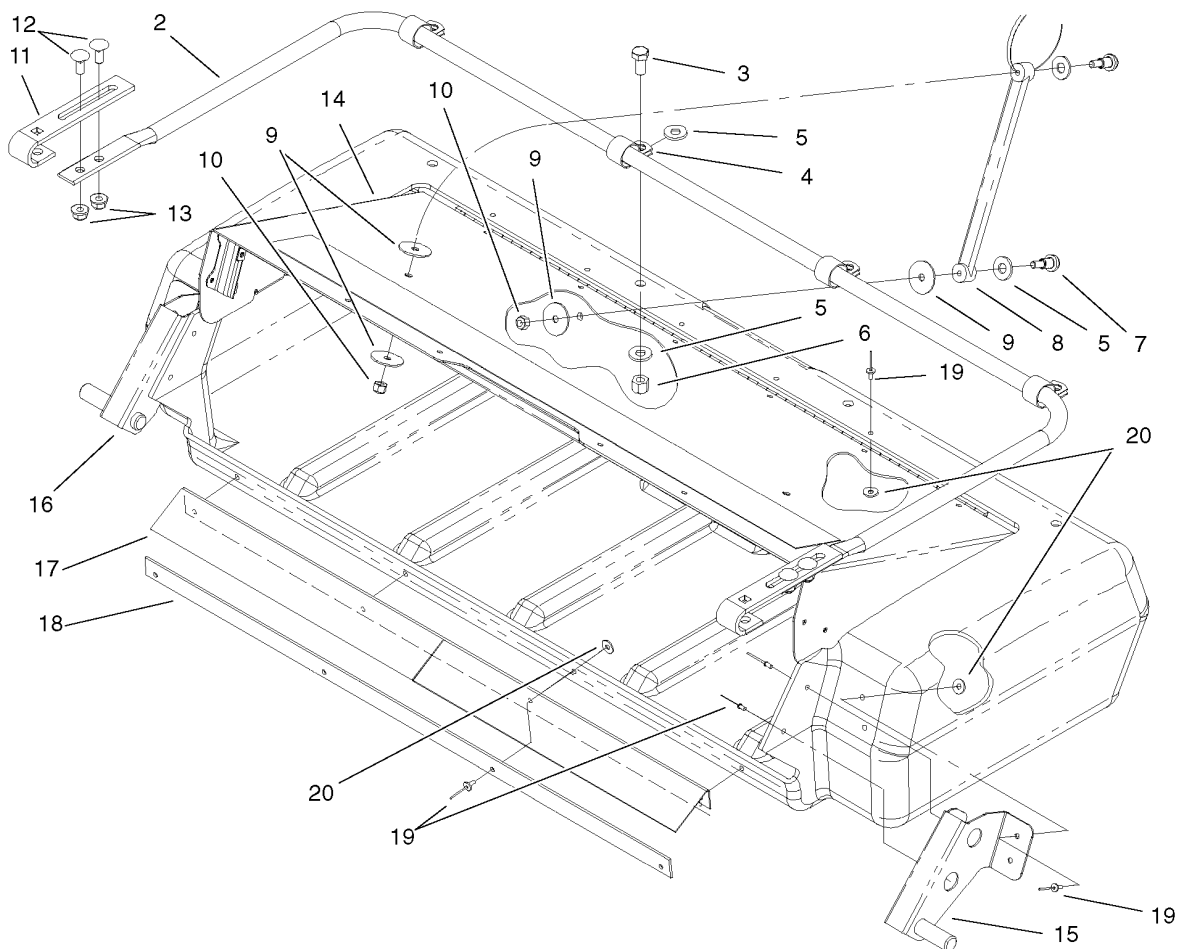
Ref.	Part Number	Qty.	Description
1	105-6882	2	Front Grass Basket ASM
1:2	61-1190	1	Tube-Basket, Front
1:3	3269-21	16	Rivet-Pop
1:4	105-0183-03	1	Bracket-LH ●
1:5	105-0182-03	1	Bracket-RH
2	105-6870-03	2	RH Bracket ASM
3	105-6871-03	2	LH Bracket ASM
4	322-5	8	Screw-HH
5	3296-29	8	Nut-Lock, NI
6	3230-5	2	Screw-CARR
7	61-3160	2	Hanger-Basket, Front
8	104-8300	6	Nut-Flange, NI
9	3230-16	4	Screw-CARR
10	104-1351	2	Bracket-Hanger
50	5-2893	4	Basket Wheel ASM
50:1	5-2891	1	Shaft-Wheel
50:2	32120-64	2	Ring-Snap, External
50:3	3-9274	2	Spacer
50:4	4-7439	1	Wheel And Bushing ASM
50:4:1	256-90	2	Bushing-Flange
51	321-8	8	Screw-HH
52	32153-4	8	Nut-Hex, Side Deform
53	3256-2	8	Washer-Flat

● Not illustrated



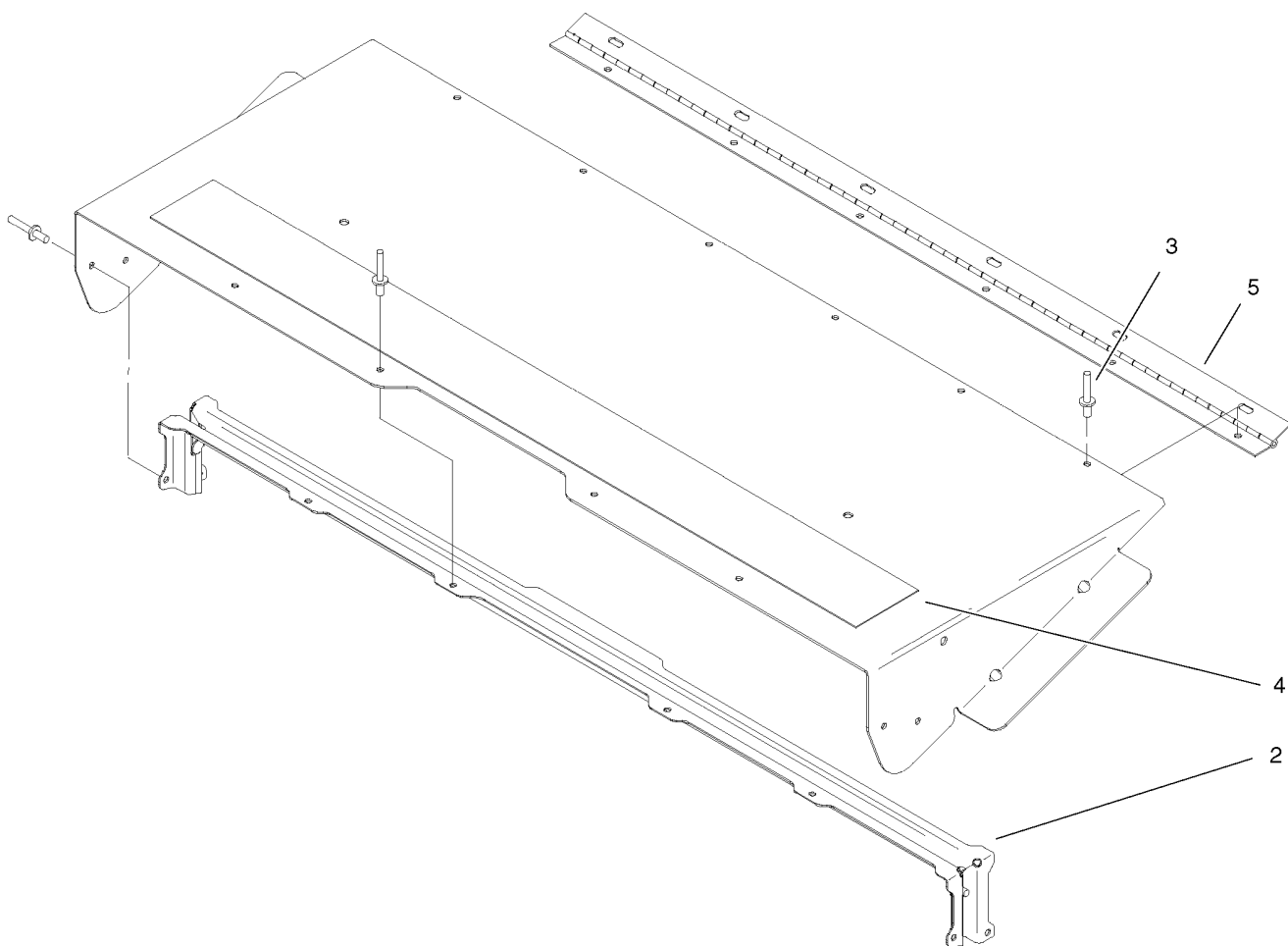
## Rear Grass Basket Assembly

Ref.	Part Number	Qty.	Description
1	105-6860	1	Rear Grass Basket ASM
2	92-1057	2	Bolt-Shoulder
3	3234-11	2	Screw-HHF
4	94-3683-03	1	LH Basket Bracket ASM
5	94-3679-03	1	RH Basket Bracket ASM
6	3296-39	4	Nut-Lock, NI
7	104-1357-03	1	Bracket-LH
8	104-1356-03	1	Bracket-RH
9	322-10	2	Screw-HH
10	3296-47	2	Nut-Lock, NI
11	340-89	1	Fitting-HYD, 45 DEG
11:1	237-30	1	O-Ring
11:2	237-80	1	O-Ring



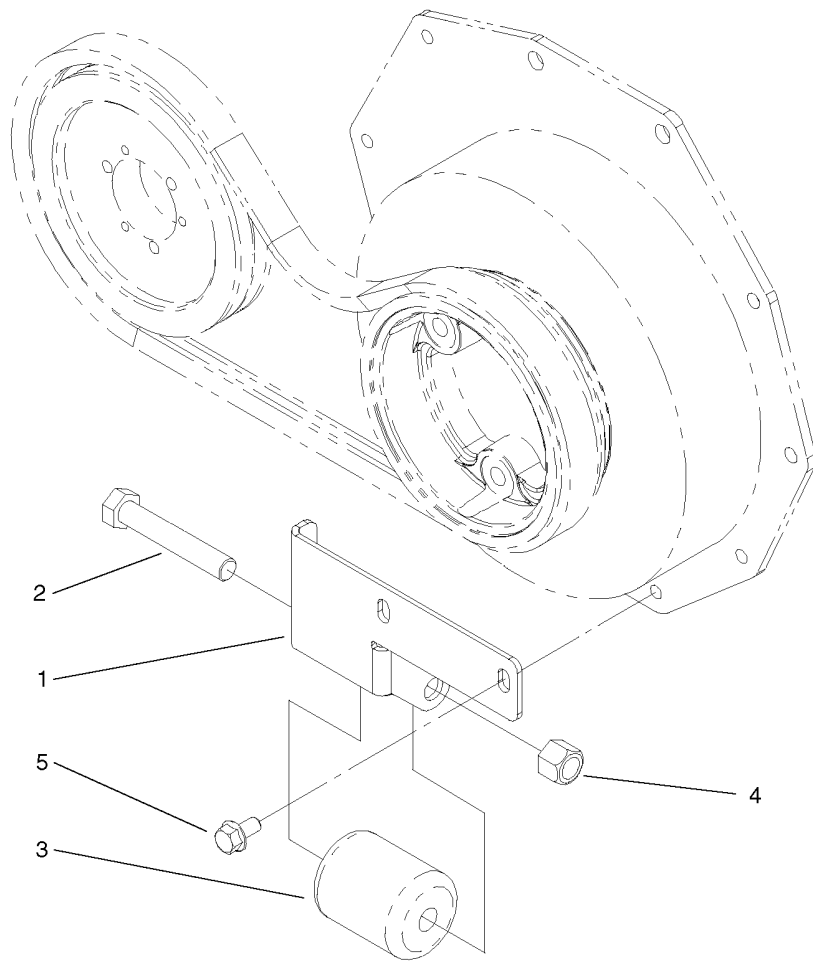
## Rear Grass Basket Assembly No. 105-6860

Ref.	Part Number	Qty.	Description
2	105-6864-03	1	Tube-Latch
3	323-6	4	Screw-HH
4	2412-41	4	Clamp
5	3256-24	12	Washer-Flat
6	3296-39	4	Nut-Lock, NI
7	104-0858	4	Bolt-Shoulder
8	105-6877	2	Strap-Latch
9	3256-58	8	Washer-Flat
10	32153-4	4	Nut-Hex, Side Deform
11	61-3160	2	Hanger-Basket, Front
12	3230-16	4	Screw-CARR
13	104-8300	4	Nut-Flange, NI
14	105-6875	1	Basket-Top ASM
15	105-6861-03	1	LH Bracket ASM
16	105-6862-03	1	RH Bracket ASM
17	62-5130	1	Flap-Plastic
18	63-8740	1	Strap-Basket
19	3269-21	18	Rivet-Pop
20	3256-49	14	Washer-Flat



## Top Basket Assembly No. 105-6875

<i>Ref.</i>	<i>Part Number</i>	<i>Qty.</i>	<i>Description</i>
2	105-6887-03	1	Top Support ASM
3	3269-23	14	Rivet-Pop
4	105-6878	1	Pad-Wear
5	105-6899	1	Hinge-Cover



## Rear Roller Bumper Assembly (For Reelmaster 3100-D Only)

<i>Ref.</i>	<i>Part Number</i>	<i>Qty.</i>	<i>Description</i>
1	105-6874-03	1	Bracket-Roller Bumper
2	325-14	1	Screw-HH
3	75-5390	1	Roller
4	3296-23	1	Nut-Lock, NI
5	33104-016	2	Screw-HHF

**Notes:**

**Notes:**

**Notes:**



**Count on it.**