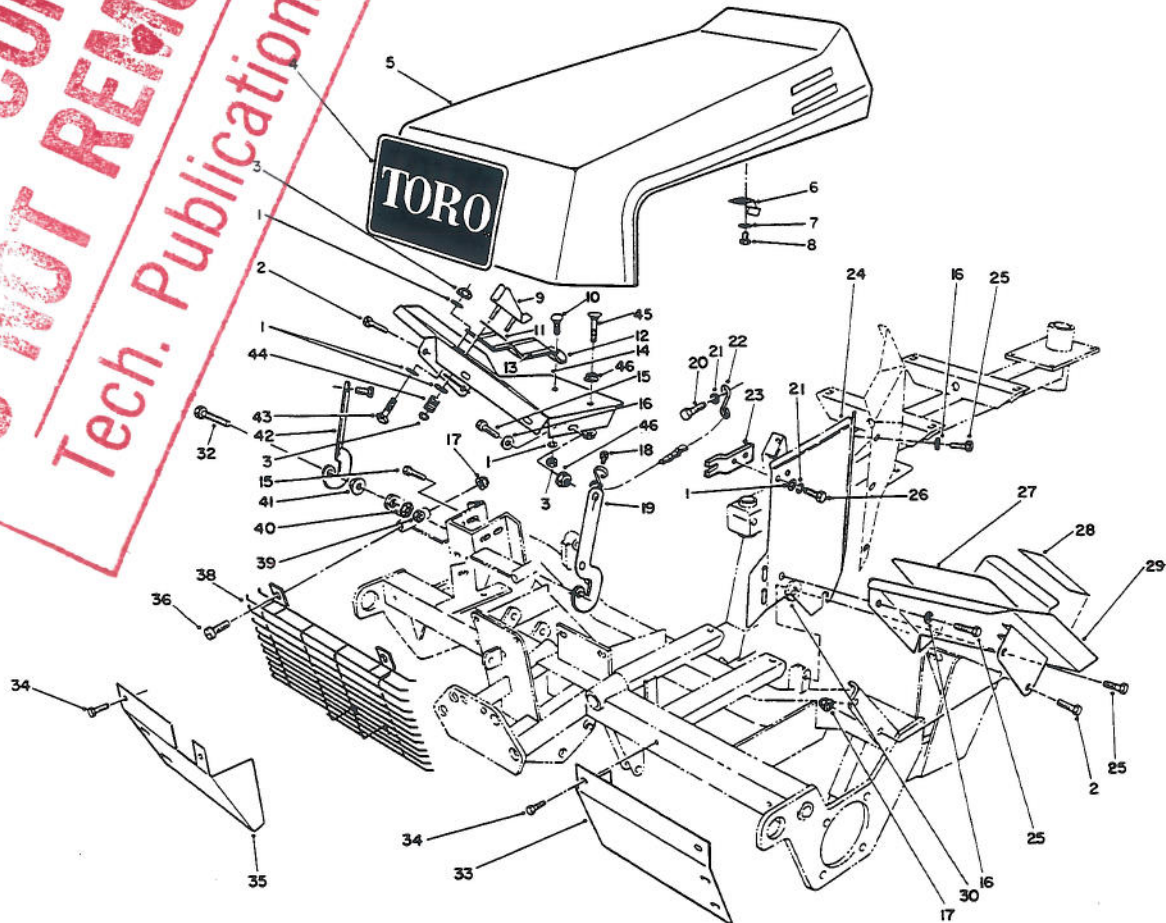


TORO

MODEL NO. 03410-50001 & UP

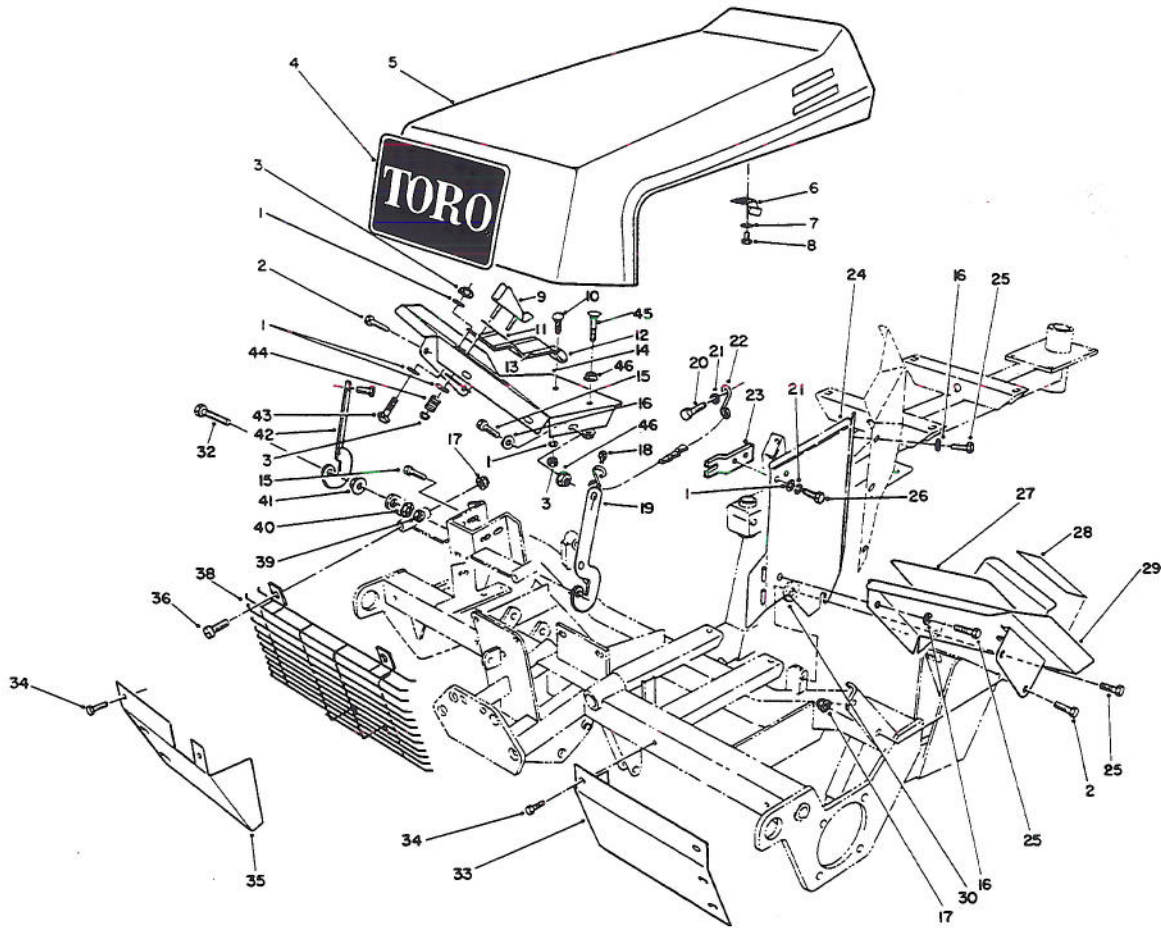
**PARTS
CATALOG****REELMASTER® 216G 2wd
Traction Unit**

T-0881A

HOOD ASSEMBLY

Ref. No.	Part No.	Description	No. Used
1	3256-22	Washer - Flat	8
2	3234-17	Screw - Cap Hex. Hd.	10
3	3296-16	Nut - Lock	5
4	62-7400	Decal - Toro Logo	1
5	62-5400	Hood Assembly	1
6	75-9310	Latch - Hood	1
7	3256-21	Washer - Flat	2
8	32104-77	Screw - Hex. Hd. Self-Tap	2
9	62-7320	Stop - Traction Pedal	1
10	3229-1	Bolt - Carriage	2
11	62-7350	Slide - Pedal Stop	2
12	76-2200	Footrest - Traction	1
13	76-2260	Pad - Footrest	1
14	80-4240	Footrest R.H.	1
15	3234-17	Screw - Cap Hex. Hd.	6
16	3256-23	Washer - Flat	1

Ref. No.	Part No.	Description	No. Used
17	32128-25	Nut - Flange Lock	5
18	32144-22	Screw - Hex. Hd. Self-Tap	4
19	28-0120	Bracket - Hinge L.H.	1
20	321-5	Screw - Cap Hex. Hd.	1
21	3253-3	Washer - Lock	3
22	76-0130	Hood Stop Chain Assembly	1
23	72-9540	Bracket - Heat Shield	1
24	72-4150	Shield - Heat	1
25	322-3	Screw - Cap Hex. Hd.	31
26	321-2	Screw	2
27	66-6120	Pad - Foot	1
28	84-1650	Decal - Brake	1
28	93-7267	Decal - Brake (Europe)	1
29	72-4360	Footrest - L.H.	1
30	62-7190	Spacer	1
32	57-3210	Screw - Hex. Washer Hd.	2



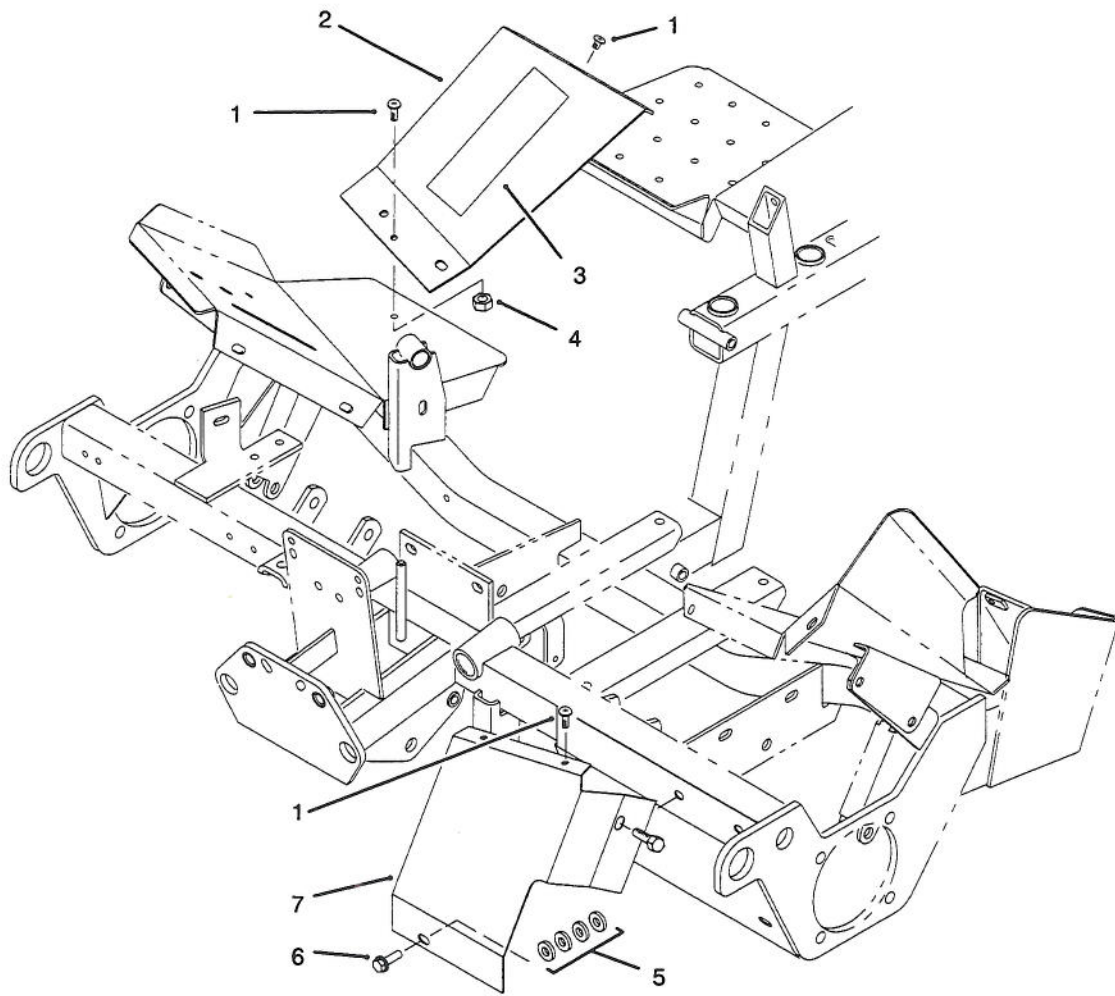
T-0881.

HOOD ASSEMBLY (Continued)

Ref. No.	Part No.	Description	No. Used
33	83-9800	Shield - Front Grass L.H.	1
34	32104-82	Screw - Hex. Hd. Self-Tap	4
35	83-8860	Shield - Front R.H.	1
36	3250-50	Screw - Pan Hd.	2
38	66-5340	Grille - Front	1
39	3217-7	Nut - Hex.	2
40	3290-224	Washer - Lock Pyramidal	2

Ref. No.	Part No.	Description	No. Used
41	92-1841	Nut - Hood Pivot	2
42	28-0130	Bracket - Hinge R.H.	1
43	3229-22	Bolt - Carriage	1
44	10-4850	Spring - Compression	2
45	77-0480	Screw - Traction Stop	1
46	32128-20	Nut - Flange	3
*	93-7252	Decal - C.E. (Europe)	1

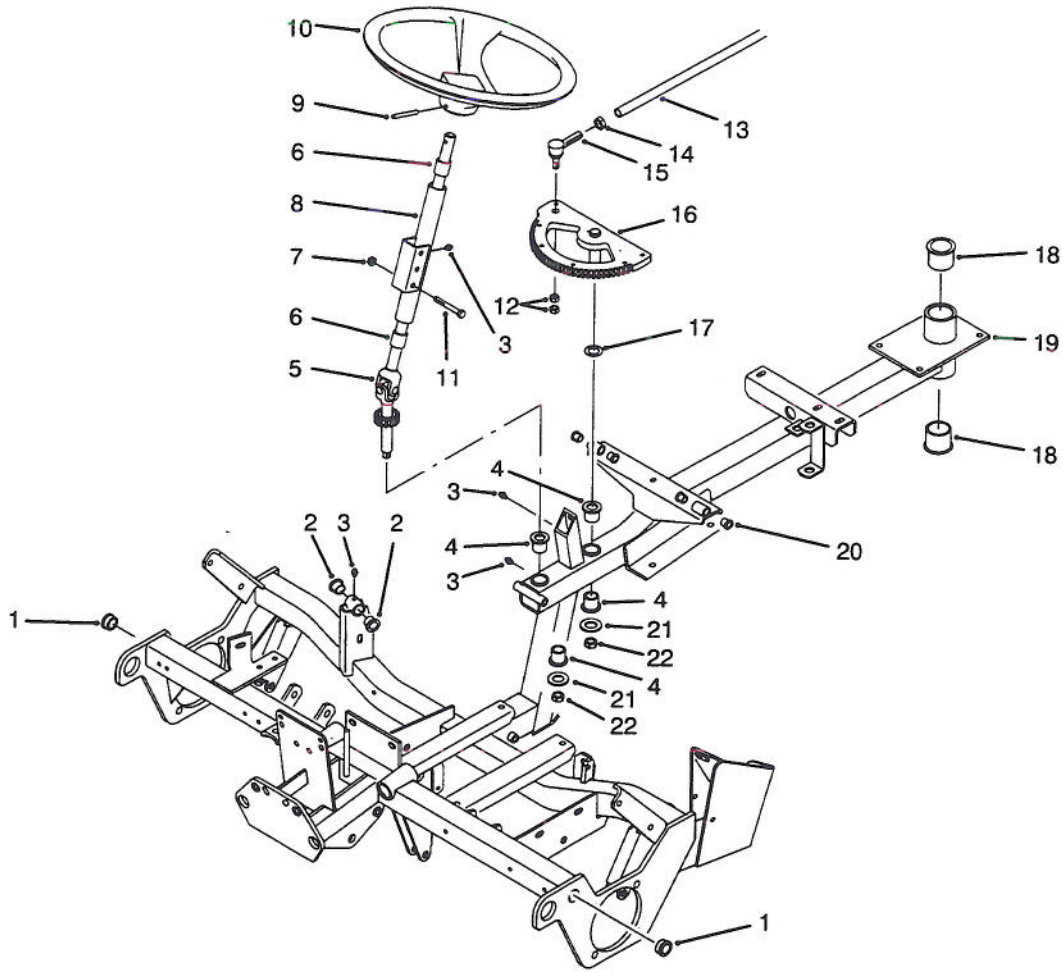
*Not Illustrated



T-2056

SHIELD ASSEMBLY (EUROPE)

Ref. No.	Part No.	Description	No. Used	Ref. No.	Part No.	Description	No. Used
1	3250-32	Screw - Phillips Pan Hd.	4	5	3256-56	Washer - Flat	4
2	93-7724	Shield - Footrest, RH	1	6	3234-17	Screw - Hex. Flange Hd.	1
3	76-2260	Pad - Footrest	1	7	93-7725	Shield - Footrest, LH	1
4	3296-42	Nut - Lock	4				

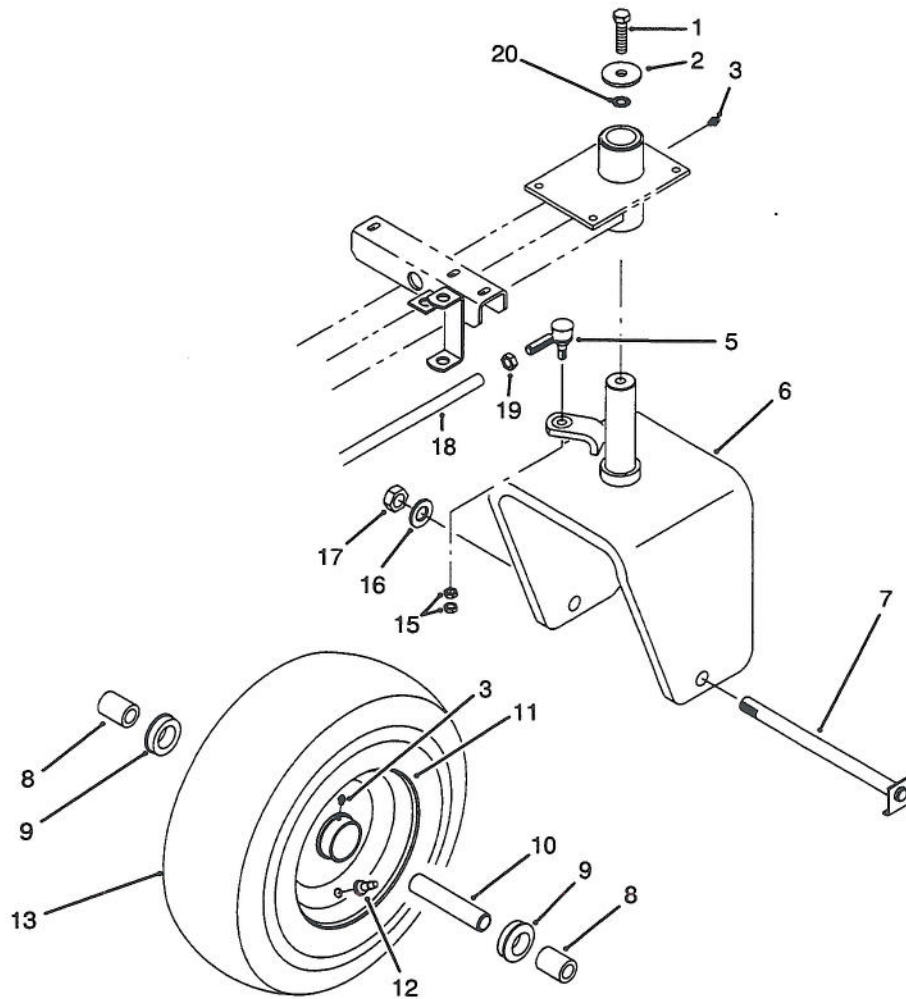


T-1415

FRAME ASSEMBLY

Ref. No.	Part No.	Description	No. Used
1	256-247	Bushing - Flange	2
2	256-287	Bushing - Flange	2
3	302-5	Fitting - Grease	4
4	92-3162	Bushing - Flange	4
5	92-3165	Steering Shaft & Gear	1
6	256-27	Bushing - Sleeve	2
7	3296-29	Nut - Flange Lock	1
8	61-2090	Steering Column Assembly (Incl. Ref. #6)	1
9	32121-10	Pin - Roll	1
10	76-1420	Wheel - Steering	1
11	322-12	Screw - Cap Hex. Hd.	1
12	3220-3	Nut - Jam	2

Ref. No.	Part No.	Description	No. Used
13	61-2070	Rod - Steering	1
14	3220-5	Nut - Jam	1
15	21-0141	Rod End Assembly (Incl. Ref. #12)	1
16	92-31	Gear - Steering	1
17	3-6498	Washer - Thrust	A/R
18	256-245	Bushing - Flange	2
19	92-1820	Frame Assembly (Incl. Ref. #1, 2, 4, 19 & 20)	1
20	256-321	Bushing - Flange	4
21	3256-26	Washer - Flat	2
22	3296-28	Nut - Lock	2



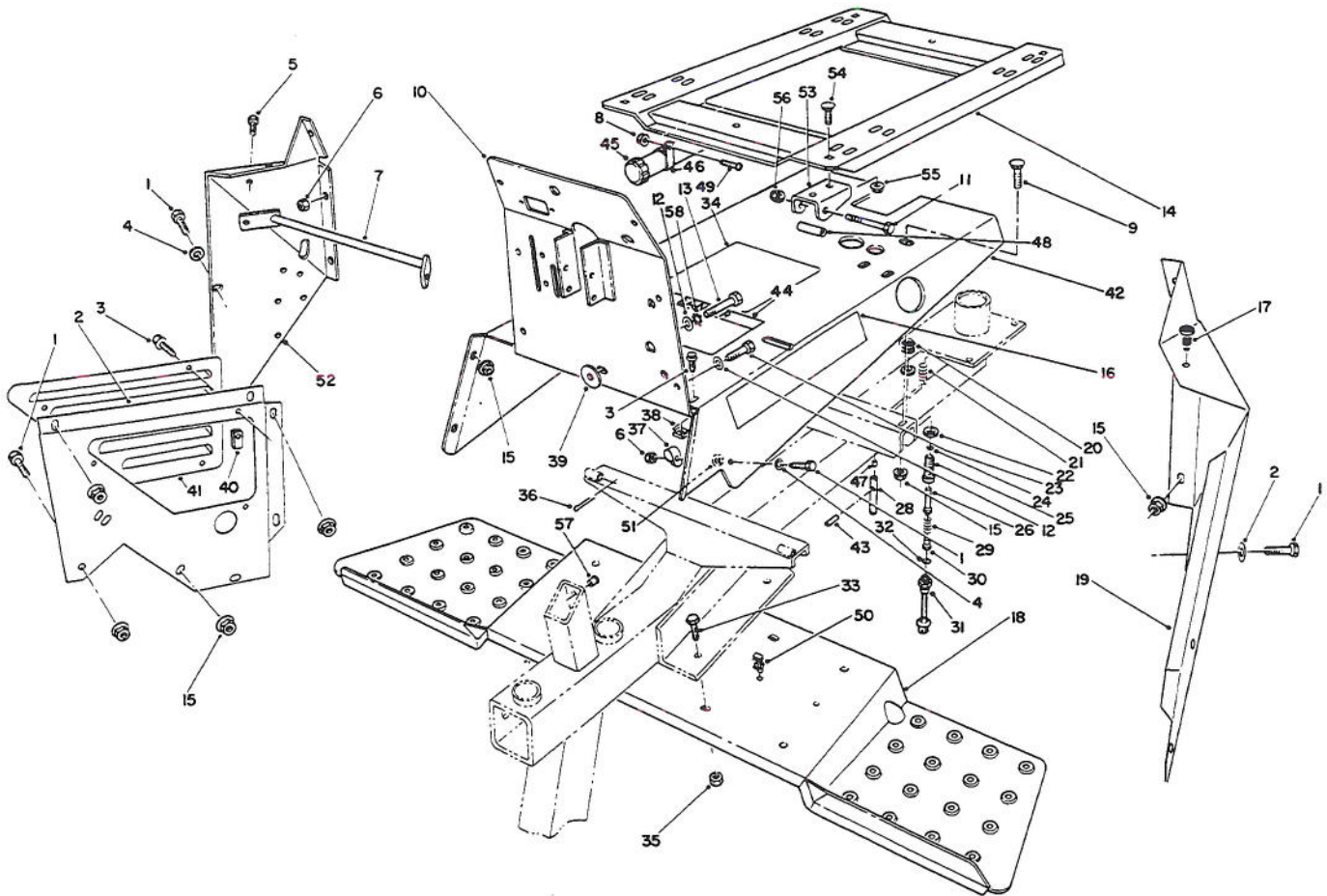
T-1421

REAR WHEEL ASSEMBLY

Ref. No.	Part No.	Description	No. Used
1	325-6	Screw - Cap Hex. Hd.	1
2	75-7730	Spacer	1
3	302-5	Fitting - Grease	2
5	20-0151	Rod End Assembly (Incl. Ref. #15)	1
6	83-7340	Fork - Caster	1
7	61-1960	Axle - Wheel	1
8	68-4210	Spacer - Wheel	2
9	251-321	Bearing - Wheel	2
10	241-130	Spacer - Bearing	1

Ref. No.	Part No.	Description	No. Used
11	241-129	Rim	1
12	232-47	Valve - Stem	1
13	231-122	Tire	1
15	3220-3	Nut - Jam	2
16	3256-28	Washer - Flat	1
17	3296-51	Nut - Lock	1
18	61-2070	Rod - Steering	1
19	3220-12	Nut - Jam	1
20	3255-2	Washer - Lock	1
*	232-47	Tube - Inner	1

*Not Illustrated

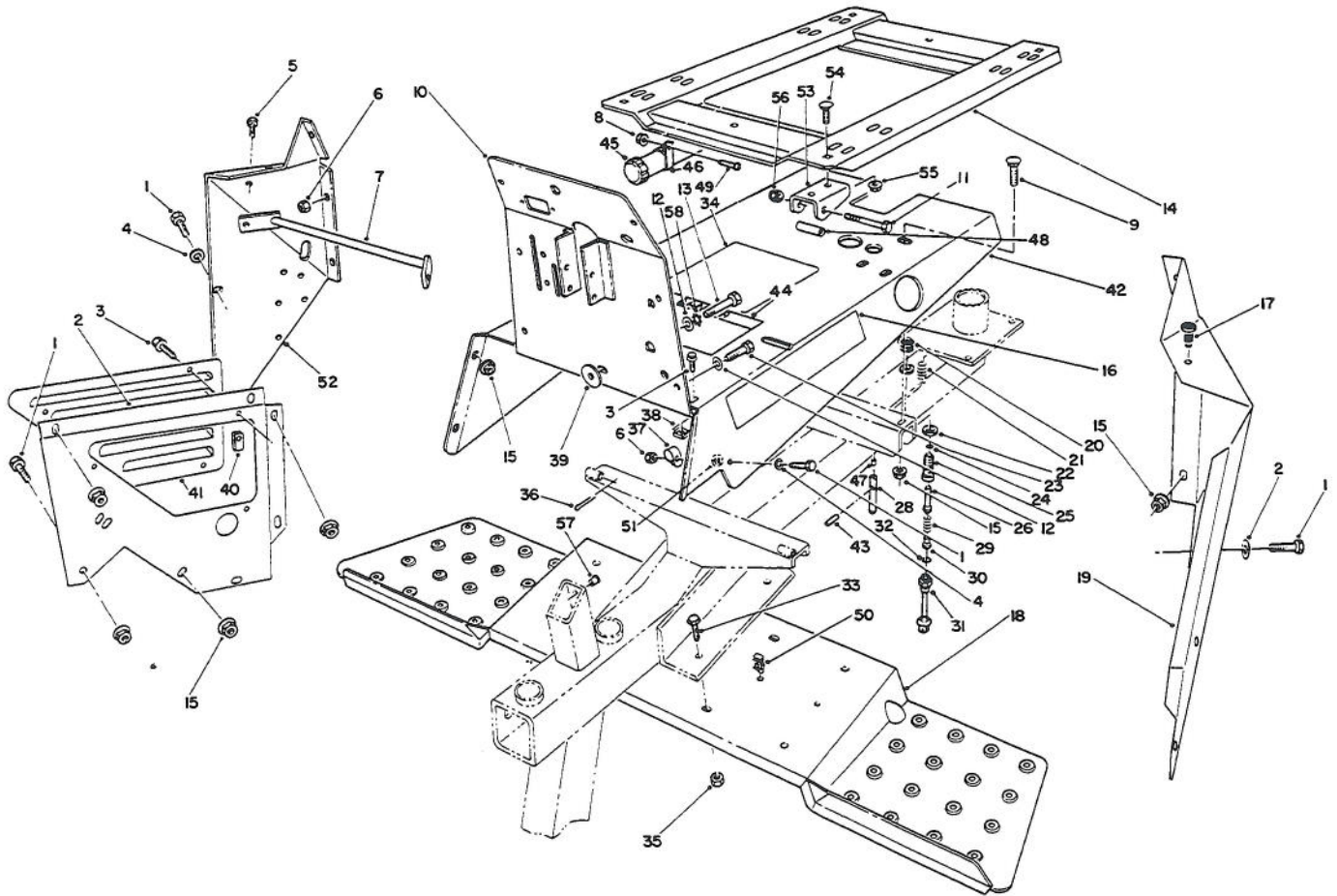


T-1066

SEAT SUPPORT ASSEMBLY

Ref. No.	Part No.	Description	No. Used
1	322-3	Screw - Hex. Hd. Cap	9
2	75-9260	Support - Hydraulic Tank	1
3	3234-13	Screw - Hex. Flange Hd.	6
4	3256-23	Washer - Flat	9
5	3234-14	Screw - Hex. Hd. Cap	2
6	3296-29	Nut - Lock	2
7	62-5330	Bracket - Side Panel	1
8	32128-44	Nut - Flange	2
9	3230-15	Bolt - Carriage	2
10	92-4426	Panel - Instrument	1
11	321-11	Screw - Cap Hex. Hd.	2
12	3256-70	Washer - Flat	7
13	322-45	Screw - Hex. Hd. Cap	1
14	85-5330	Plate - Seat	1
15	32128-25	Nut - Flange Lock	17
16	61-3840	Decal - Reelmaster 216	2
17	237-37	Bumper - Rubber	2
18	83-9730	Step - Foot	1
19	72-4350	Panel - Access L.H.	1
20	43-8870	Boot - Switch	1
21	37-9590	Spring	1
22	218-461	Nut - Jam	2
23	322-43	Screw - Cap Hex. Hd.	1
24	237-7	Seal - O-Ring	1
25	43-8620	Guide - Switch Pin	1
26	43-8860	Plunger - Switch	1

Ref. No.	Part No.	Description	No. Used
27	3234-17	Screw - Hex. Flange Hd.	2
28	27-9870	Pin - Seat Spring	1
29	43-8600	Spring - Compression	1
30	43-8610	Guide - Spring & Ball Seat	1
31	72-4320	Switch - Neutral	1
32	237-30	Seal - O-Ring	1
33	3255-8	Screw - Hex. Flange Hd.	4
34	88-9550	Decal - Service Information	1
34	93-7278	Decal - Service (Europe)	1
35	32128-43	Nut - Flange Lock	4
36	3272-4	Pin - Cotter	2
37	2412-71	Clamp - R	1
38	3290-196	Nut - Retainer	3
39	62-7170	Spacer	1
40	3290-199	Nut - Speed	3
41	76-0500	Cover - Reservoir Support	1
42	92-3180	Panel	1
43	32121-6	Pin - Roll	1
44	83-9550	Decal - Warning	1
44	93-7271	Decal - Warning (Europe)	1
45	74-0720	Tube - Manual	1
46	2412-133	Clamp - R	2
47	28-6180	Pin	1
48	85-5340	Tube - Pivot	2
49	32122-14	Screw - Truss Hd.	2
50	80-3940	Clip - Rosebud	1

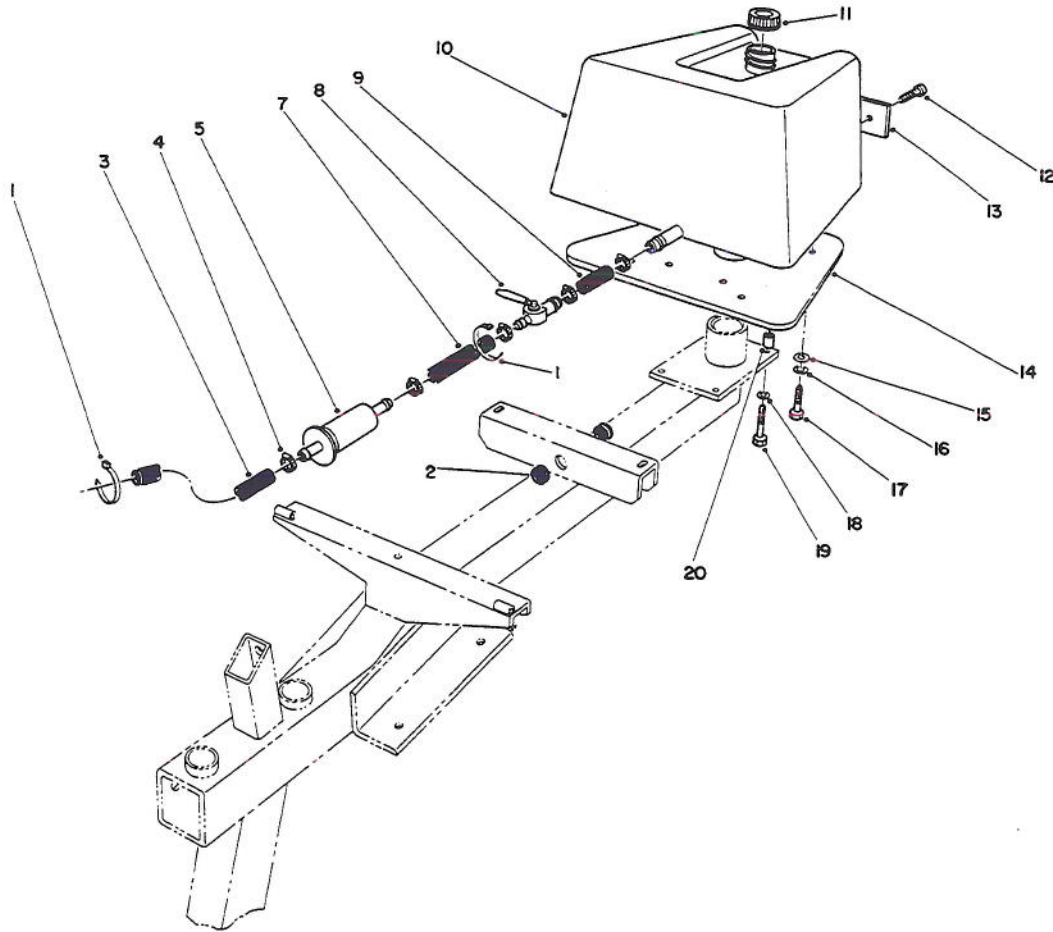


T-1066

SEAT SUPPORT ASSEMBLY (Continued)

Ref. No.	Part No.	Description	No. Used
51	237-88	Grommet	1
52	61-3880	Panel - Access R.H.	1
53	85-5230	Bracket - Seat Pivot	2
54	3229-22	Bolt - Carriage	2

Ref. No.	Part No.	Description	No. Used
55	32128-33	Nut - Flange Lock	2
56	3296-42	Nut - Lock	2
57	32148-8	Insert - Threaded	1
58	3255-8	Washer - Lock E.T.L.W.	1



T-1067

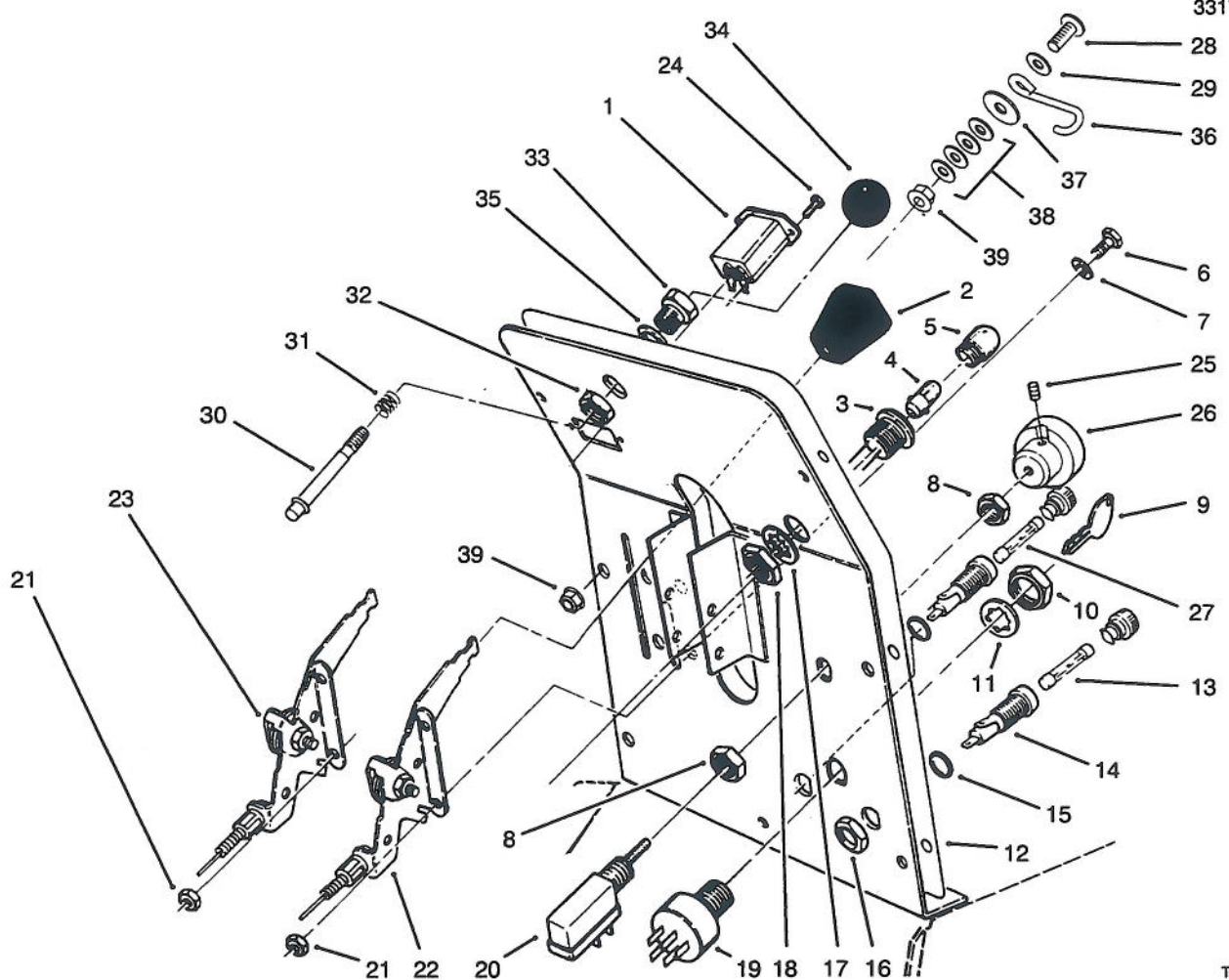
FUEL TANK ASSEMBLY

Ref. No.	Part No.	Description	No. Used
1	3290-379	Tie - Cable	2
2	237-125	Grommet	2
3	47-2980	Hose - Fuel	1
4	2412-36	Clamp - Hose	6
5	38-8000	Filter - Fuel	1
7	47-2988	Hose - Fuel	1
8	61-3550	Valve - Ball	1
9	56-2230	Hose - Fuel	1
10	61-0030	Tank - Fuel	1
11	93-7198	Cap - Fuel	1
12	3290-470	Screw - Machine	2

Ref. No.	Part No.	Description	No. Used
13	61-3310	Plate - Toro Logo	1
14	61-2680	Weight - Standard	1
*	62-5140	Weight - 8 Blade (Optional)	1
15	3256-23	Washer - Flat	4
16	3253-4	Washer - Lock	4
17	322-3	Capscrew - Hex. Hd.	4
18	3253-21	Washer - Lock	4
19	323-9	Capscrew - Hex. Hd.	4
†20	61-2220	Spacer	4

*Not Illustrated

†Use with 5 blade cutting units only.



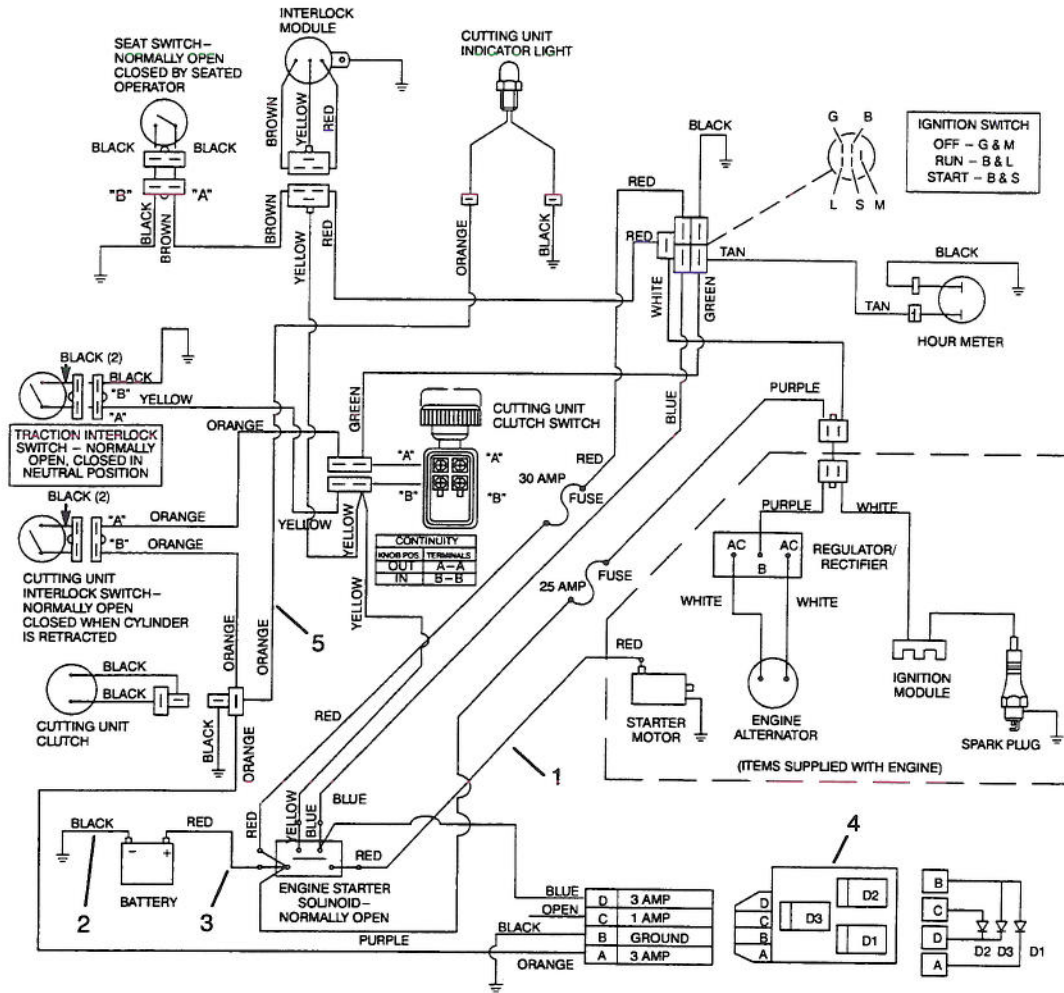
T-0264A

INSTRUMENT PANEL ASSEMBLY

Ref. No.	Part No.	Description	No. Used
1	75-6820	Meter - Hour	1
2	66-0120	Knob	2
3	44-2212	Lamp - Pilot (Incl. Ref. #4, 5 & 17-18)	1
†4	219-18	Bulb - Light (GE #1893)	1
5	218-562	Lens	1
6	321-39	Screw - Cap Hex. Hd.	4
7	3256-1	Washer - Flat	4
8	3218-19	Nut - Hex.	2
9	63-8360	Key	1
10	218-461	Nut	1
11	3254-5	Washer - Lock	1
12	93-4424	Decal - Instrument Panel	1
12	93-7268	Decal - Instrument Panel (Europe)	1
†13		Fuse - 30 Amp.	1
14	218-489	Fuse Holder Assembly (Incl. Ref. #15-16)	2
15		Seal - O-Ring	2
16		Nut - Hex.	2
17	218-536	Washer - Lock	1
18	218-535	Nut	1
19	23-0660	Switch - Key (Incl. Ref. #9-11)	1

Ref. No.	Part No.	Description	No. Used
20	92-3194	Switch - Clutch (Incl. Ref. #8, 25 & 26)	1
21	3296-42	Nut - Lock	4
22	80-4120	Control - Choke	1
23	80-4110	Control - Throttle	1
24	32144-18	Screw - Cap Hex. Hd.	2
25	3298-8	Screw - Set	1
26	92-3195	Knob	1
27	93-4410	Fuse - 25 Amp. Slo-Blo	1
28	32122-35	Screw - Phillips Truss Hd. (Europe)	1
29	3256-2	Washer - Flat (Europe)	1
30	75-9330	Pin - Hood Latch	1
31	5-4723	Spring - Compression	1
32	3218-5	Nut - Hex. Jam	1
33	75-9320	Bushing - Hood Latch	1
34	233-17	Knob	1
35	3256-26	Washer - Flat	1
36	93-7726	Hook (Europe)	1
37	3256-35	Washer - Flat (Europe)	1
38	3256-2	Washer - Flat (Europe)	A/R
39	32128-44	Nut - Flange Lock (Europe)	2

†Obtain Locally

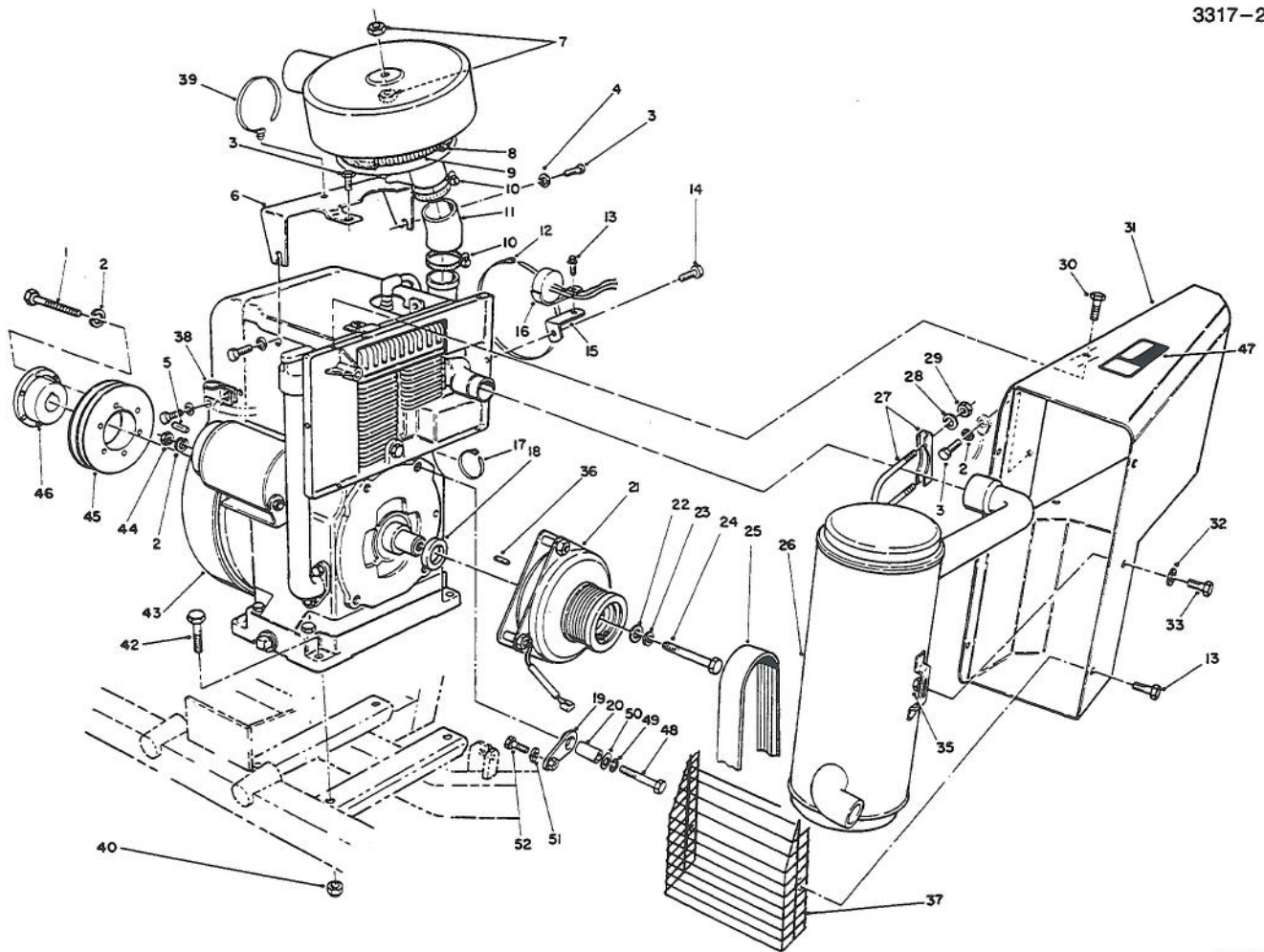


T-1068A

ELECTRICAL SCHEMATIC

Ref. No.	Part No.	Description	No. Used
1	61-2660	Wire - Solenoid/Starter	1
2	61-2670	Wire - Ground	1
3	10-7130	Wire - Battery/Solenoid	1

Ref. No.	Part No.	Description	No. Used
4	92-3191	Diode - Circuit Board	1
5	93-4423	Wire Harness Assembly	1

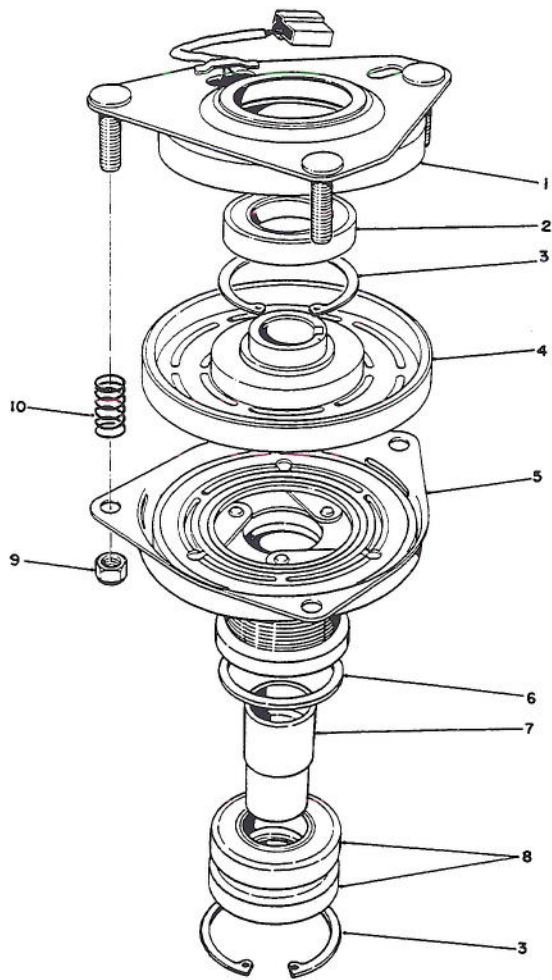


T-0266

ENGINE & CLUTCH ASSEMBLY

Ref. No.	Part No.	Description	No. Used
1	321-13	Screw - Cap Hex. Hd.	3
2	3253-3	Washer - Lock	3
3	3234-4	Screw - Cap Hex. Hd.	3
4	3255-7	Washer - Lock	1
5	10-7070	Key - Square	1
6	61-2120	Bracket - Air Cleaner	1
7	3296-56	Nut - Lock	2
8		Precleaner - Air Cleaner	1
9		Element - Air Cleaner	1
10	2412-92	Clamp - Hose	2
11	61-3470	Hose	1
12	3333-975	Tie - Cable	1
13	49-2040	Screw - Tapping	5
14	3234-4	Screw - Cap Hex. Hd.	1
15	76-0070	Bracket - Interlock Module	1
16	59-9810	Module - Ignition	1
17	3290-378	Tie - Cable	1
18	70-7080	Spacer - Clutch	1
19	92-1810	Arm - Torque	1
20	92-1813	Spacer - Torque Arm	1
21	70-8020	Clutch Assembly	1
22	70-8040	Washer - Flat	1
23	3253-27	Washer - Lock	1
24	3213-9	Capscrew - Hex. Hd.	1
25	61-3390	Belt - Poly-V	1
26	92-7949	Muffler	1
27	2112-9	Clamp - Muffler (Incl. Ref. #28-29)	1

Ref. No.	Part No.	Description	No. Used
28	3253-4	Washer - Lock	2
29	3217-6	Nut - Hex.	2
30	12-3270	Screw - Cap Hex. Hd.	4
31	61-0020	Shroud - Muffler	1
32	3256-70	Washer - Flat	2
33	322-46	Screw - Cap Hex. Hd.	2
35	32128-25	Nut - Lock	2
36	70-8030	Key	1
37	84-1840	Grille - Muffler	1
38	2412-41	Clamp - R	1
39	3290-410	Tie - Push Mount	1
40	3296-39	Nut - Lock	4
42	323-8	Screw - Cap Hex. Hd.	4
43		Engine - Kohler Model No. M16 Spec. No. 711563	1
44	3218-1	Nut - Hex.	1
45	92-1819	Pulley - Engine	1
46	61-3340	Bushing - Taper (Incl. Ref. #1-2)	1
47	66-6840	Decal - Hot	1
47	93-8071	Decal - Hot (Europe)	1
48	324-7	Screw - Cap Hex. Hd.	1
49	3253-6	Washer - Lock	1
50	3256-25	Washer - Flat	1
51	92-1814	Spacer - Torque Arm	1
52	322-3	Screw - Cap Hex. Hd.	1

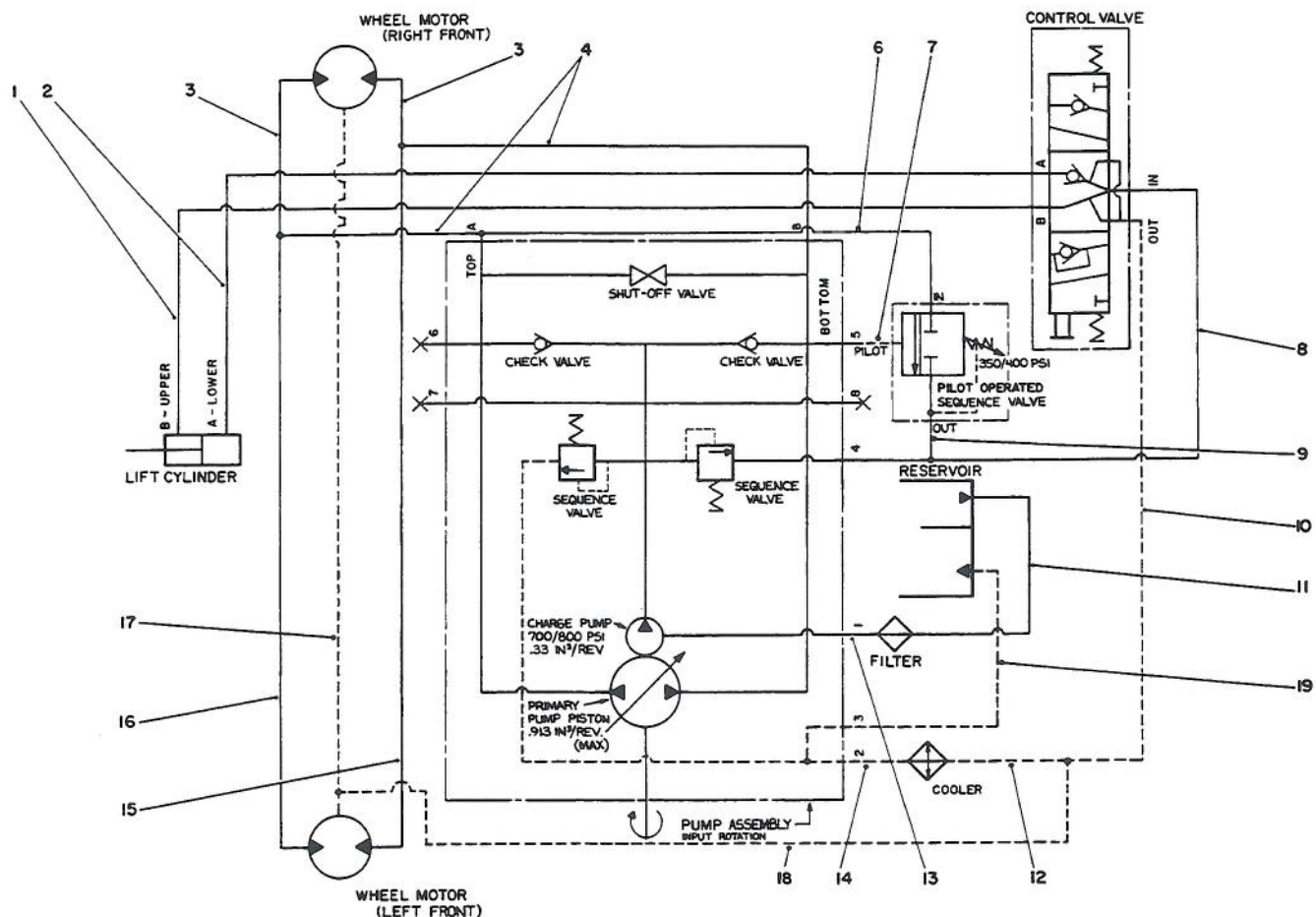


T-0267

ELECTRIC CLUTCH ASSEMBLY NO. 70-8020

Ref. No.	Part No.	Description	No. Used
1	44-8350	Field Assembly (Incl. Ref. #2 & 3)	1
2	251-292	Bearing - Field	1
3	44-8310	Ring - Retaining	2
4	44-8360	Field Coil, Rotor & Bearing Assembly (Incl. Ref. #1)	1

Ref. No.	Part No.	Description	No. Used
5	62-5250	Armature & Pulley Assembly (Incl. Ref. #3, 6, 7 & 8)	1
6	44-8330	Spacer - Pulley Bearing	1
7	76-0080	Collar - Bearing	1
8	251-291	Bearing - Pulley	2
9	3296-6	Nut - Lock	3
10	44-8320	Spring - Compression	3

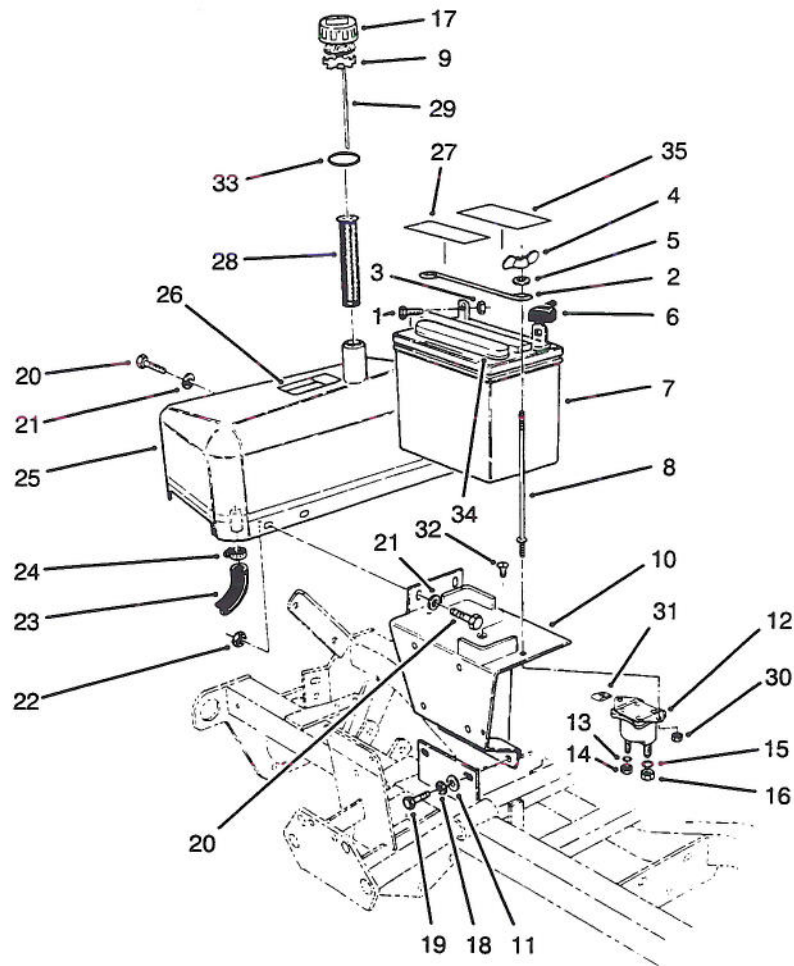


T-0268

HYDRAULIC SCHEMATIC

Ref. No.	Part No.	Description	No. Used
1	61-2500	Hose Assembly	1
2	61-2490	Hose Assembly	1
3	61-3060	Tube - Hydraulic R.H.	2
4	76-2520	Hydraulic Hose Assembly	2
6	76-2530	Hose - Hydraulic	1
7	63-4890	Hose - Hydraulic	1
8	61-2520	Hydraulic Hose Assy. Upper	1
9	63-4880	Hose - Hydraulic	1
10	61-2510	Hydraulic Hose Assy. Lower	1

Ref. No.	Part No.	Description	No. Used
11	61-2550	Hose - Hydraulic	1
12	92-2406	Hose - Hydraulic	1
13	61-2540	Hose - Hydraulic	1
14	92-2407	Hose - Hydraulic	1
15	61-3070	Tube - Hydraulic L.H. Rear	1
16	61-3080	Tube - Hydraulic L.H. Front	1
17	76-2550	Hose - Hydraulic	1
18	76-2540	Hose - Hydraulic	1
19	92-2408	Hose - Hydraulic	1

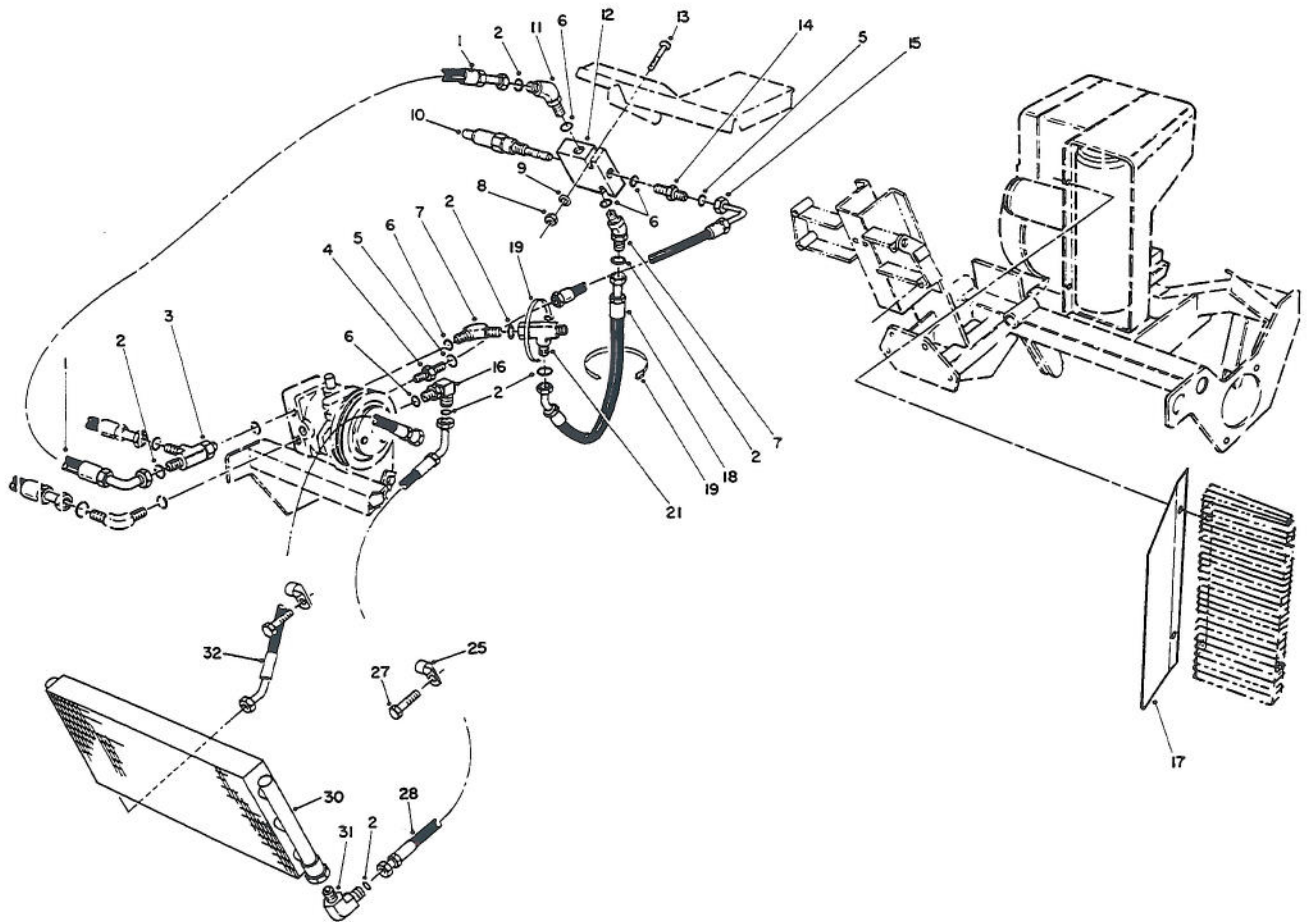


T-0269A

HYDRAULIC TANK & BATTERY ASSEMBLY

Ref. No.	Part No.	Description	No. Used	Ref. No.	Part No.	Description	No. Used
1	322-3	Screw - Cap Hex. Hd.	2	20	322-43	Screw - Cap Hex. Hd.	4
2	72-4790	Clamp - Battery	1	21	3256-70	Washer - Flat	4
3	3217-6	Nut - Hex.	2	22	32128-25	Nut - Lock	2
4	32103-12	Nut - Wing	2	23	92-2408	Hose - Hydraulic	1
5	3256-1	Washer - Flat	2	24	2412-34	Clamp - Hose	1
6	28-8080	Boot - Battery Terminal	1	25	61-0100	Tank - Hydraulic	1
7	82-4640	Battery - 12 Volt	1	26	66-6840	Decal - Hot	1
8	10-8120	Bolt - Battery	2	26	93-8071	Decal - Hot (Europe)	1
9	76-0220	Foam - Oil Filter	1	27	93-7276	Decal - Danger (Europe)	1
10	76-0440	Battery Support W.A.	1	28	61-2790	Screen - Filler	1
11	3256-24	Washer - Flat	2	29	76-0240	Dipstick Assembly	1
12	28-4210	Solenoid - Starter	1	30	32149-2	Nut - Hex.	2
13	3254-1	Washer - Lock	2	31	3290-199	Nut - Speed	1
14	3219-14	Nut - Hex.	2	32	32108-101	Screw - Flathead	1
15	3253-4	Washer - Lock	2	33	237-71	O-Ring	1
16	3218-13	Nut - Lock	2	34	84-1830	Cap - Battery Vent	6
17	76-0190	Cap - Oil	1	*	76-0200	Oil Cap Assembly (Incl. Ref. #9, 17, 29 & 33)	1
18	3253-21	Washer - Lock	2	35	93-6668	Decal - Battery (Europe)	1
19	11-0590	Screw - Cap Hex. Hd.	2				

*Not Illustrated



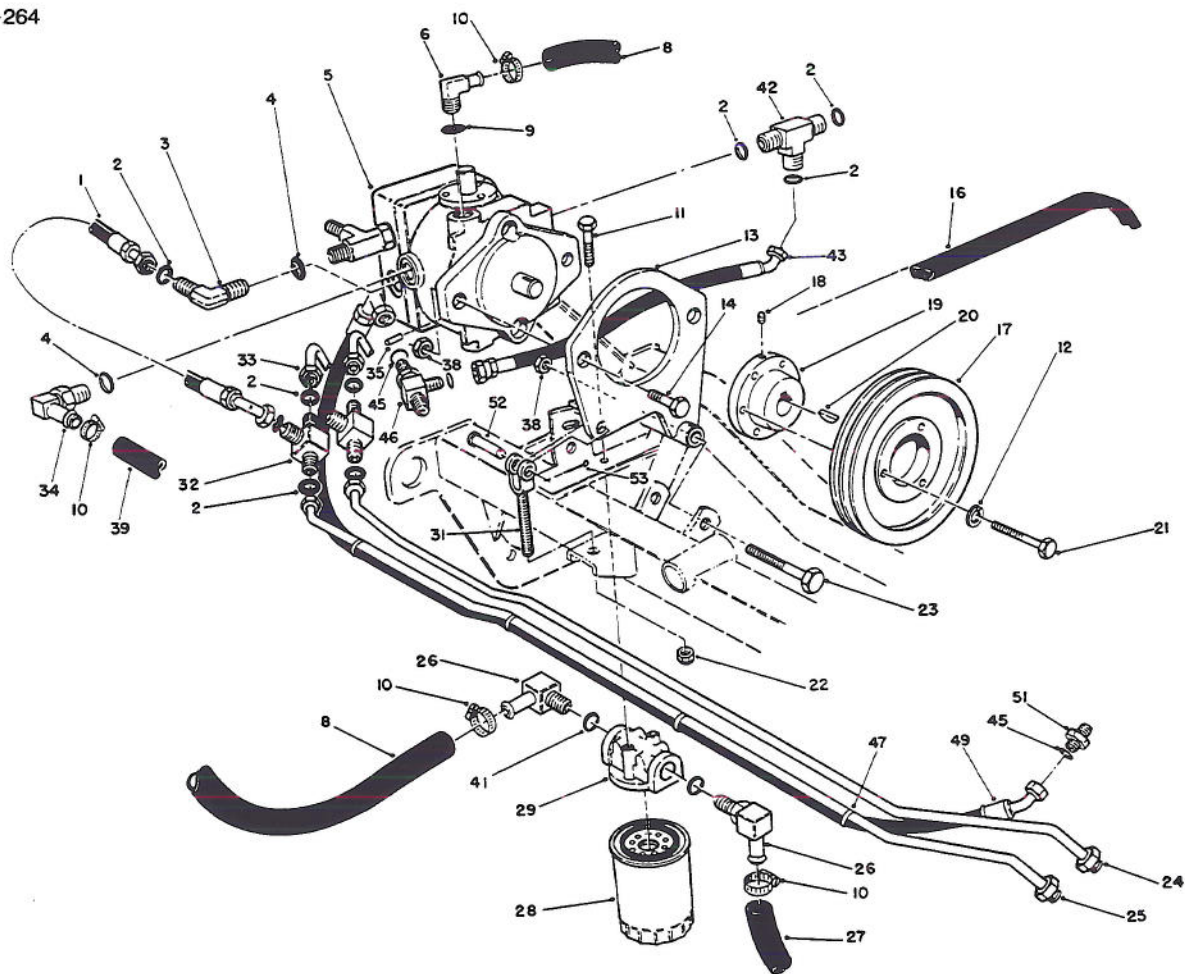
T-0886

HYDRAULIC OIL COOLER ASSEMBLY

Ref. No.	Part No.	Description	No. Used
1	76-2530	Hydraulic Hose Assembly	1
2	237-30	Seal - O-Ring	8
3	340-109	Fitting - Male Tee (Incl. Ref. #2)	1
4	340-92	Fitting - Straight (Incl. Ref. #5)	1
5	237-150	Seal - O-Ring	2
6	237-22	Seal - O-Ring	5
7	340-96	Fitting - 45° Elbow (Incl. Ref. #2 & 6)	2
8	32128-32	Nut - Hex. Flange	2
9	3256-22	Washer - Flat	2
10	63-8790	Cartridge Valve Assembly	1
11	63-8770	Fitting - 45° Orifice (Incl. Ref. #2 & 6)	1
12	63-5080	Pressure Sequence Valve (Incl. Ref. #10)	1
13	321-11	Screw - Cap Hex. Hd.	2
14	340-1	Fitting - Straight (Incl. Ref. #5 & 6)	1

Ref. No.	Part No.	Description	No. Used
15	63-4890	Hydraulic Hose Assembly	1
16	340-99	Fitting - Hydraulic 90° (Incl. Ref. #2)	1
17	63-8940	Shield - Cooler	1
18	63-4880	Hydraulic Hose Assembly	1
19	3290-379	Tie - Cable	2
21	340-104	Fitting - Male/Female Tee (Incl. Ref. #2)	1
25	2412-81	Clamp - R	2
27	32144-69	Screw - Self Tapping	2
28	92-2407	Hydraulic Hose Assembly	1
30	63-5400	Exchanger - Heat	1
31	340-168	Fitting - 90° Male Elbow (Incl. Ref. #2)	2
32	92-2406	Hydraulic Hose Assembly	1
*	63-8800	Seal Kit Pressure Sequence Valve (For Ref. #10 & 12)	1
*	56-7982	Sleeve - Protective	1

*Not Illustrated

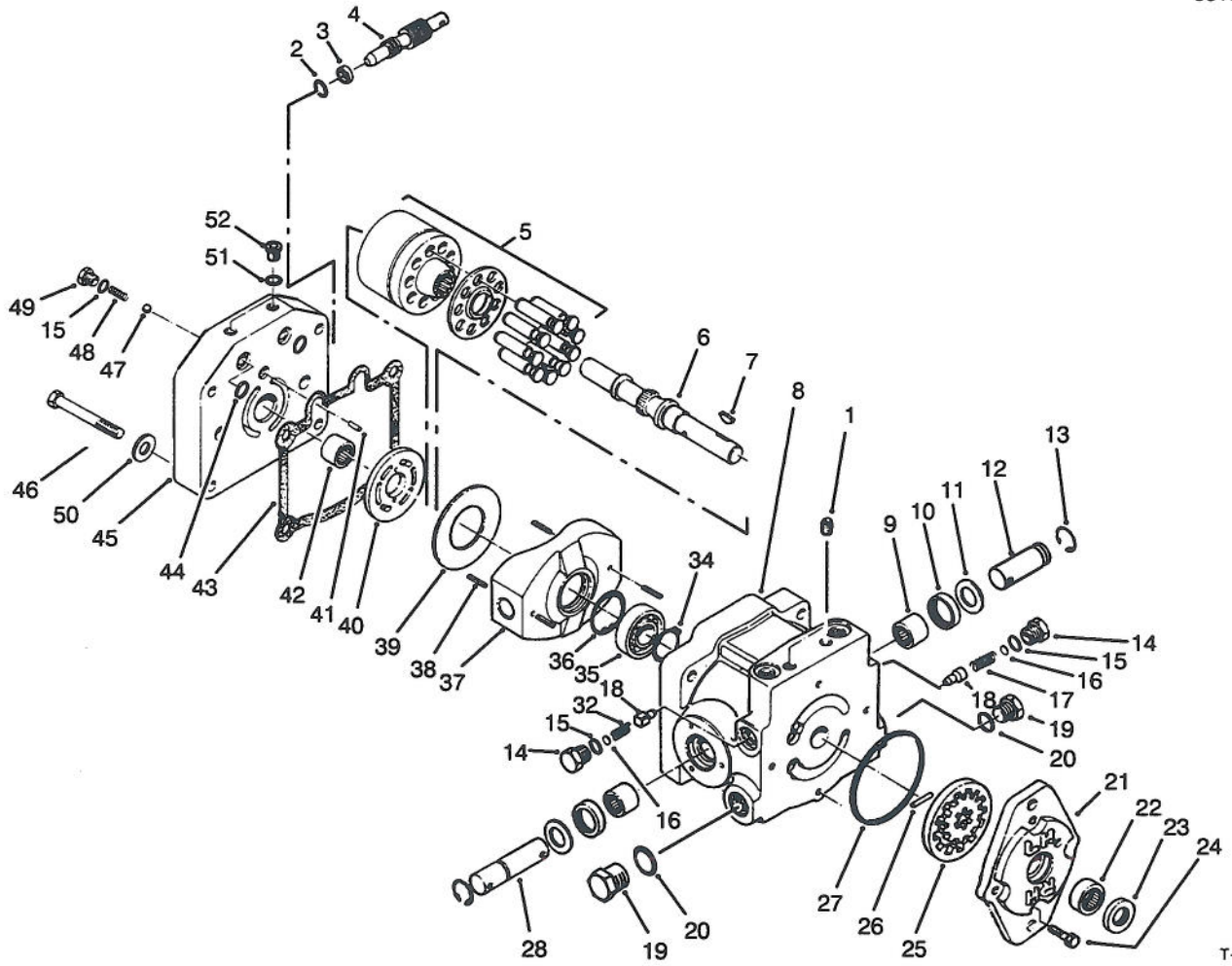


T-0271

HYDRAULIC DRIVE ASSEMBLY

Ref. No.	Part No.	Description	No. Used
1	76-2520	Hydraulic Hose	2
2	237-30	O-Ring	12
3	340-98	Fitting - 90° Elbow (Incl. Ref. #2 & 4)	1
4	237-79	O-Ring	2
5	92-9023	Pump Assembly (Incl. Ref. #20)	1
6	61-2710	Fitting - 90° Hose Elbow (Incl. Ref. #9)	1
8	61-2540	Hose - Hydraulic	1
9	237-80	O-Ring	1
10	2412-34	Clamp - Hose	5
11	3234-4	Screw - Hex Washer Hd.	2
12	3253-3	Washer - Lock	3
13	61-2230	Plate - Pump Mount	1
14	325-7	Screw - Cap Hex Hd.	2
16	92-1821	V-Belt - Pump	1
17	61-3320	Pulley - Pump	1
18	3245-9	Screw - Set	1
19	61-3350	Bushing - Taper (Incl. Ref. #12, 18 & 21)	1
20	3257-32	Key - Woodruff	1
21	321-13	Screw - Cap Hex Hd.	3
22	3296-6	Nut - Lock	1
23	325-18	Screw - Cap Hex Hd.	1
24	61-3080	Tube - Hyd. L.H. (Front)	1
25	61-3070	Tube - Hyd. L.H. (Rear)	1

Ref. No.	Part No.	Description	No. Used
26	23-8910	Fitting - 90° Hose Elbow (incl. Ref. #41)	2
27	61-2550	Hose - Hydraulic	1
28	54-0110	Filter - Oil	1
29	61-3770	Head - Filter	1
31	76-2220	Adjustment Yoke Assembly	1
32	340-102	Fitting - Tee (Incl. Ref. #2)	2
33	61-3060	Tube - Hydraulic R.H.	2
34	353-954	Fitting - 90° Elbow (Incl. Ref. #4)	1
35	32121-34	Pin - Roll	1
38	3296-23	Nut - Lock	3
39	92-2408	Hose - Hydraulic	1
41	237-117	O-Ring	2
42	340-102	Fitting - Hydraulic Tee (Incl. Ref. #2)	1
43	76-2540	Hose Assembly - Hyd.	1
45	237-30	O-Ring	3
46	340-140	Fitting - Tee	1
47	3290-379	Cable Tie	4
49	76-2550	Hose Assembly	1
50	237-78	O-Ring	1
51	340-92	Fitting	1
52	283-2	Pin - Yoke	1
53	3272-6	Pin - Cotter	1



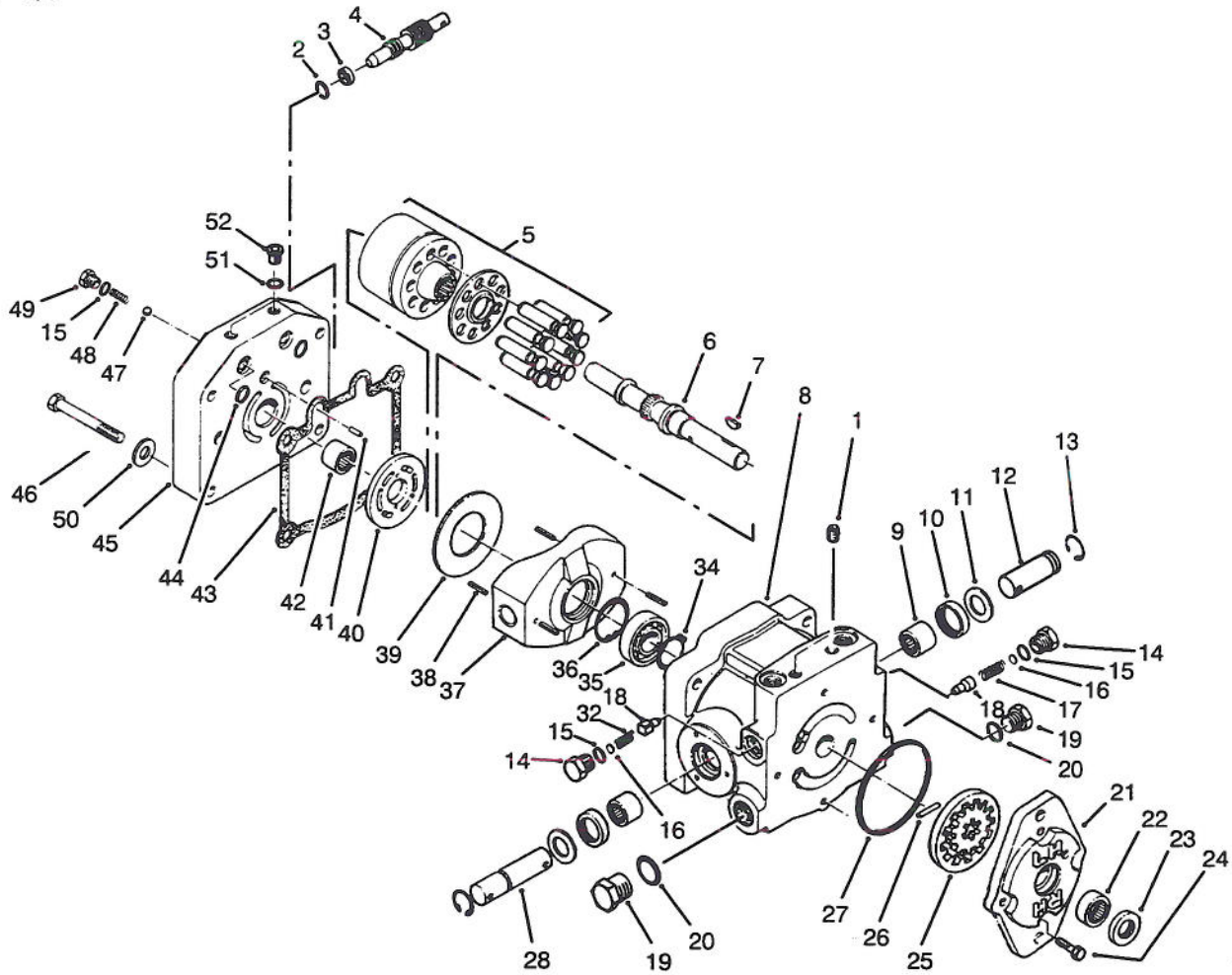
T-1809

HYDRAULIC PUMP ASSEMBLY NO. 92-9023

Ref. No.	Part No.	Description	No. Used
1	285-17	Plug - Pipe	6
2	237-22	O-Ring	1
3	25-2630	Ring	1
4	88-8220	Valve - By-Pass	1
5	48-1800	Cylinder Block Kit	1
6	67-8020	Shaft - Pump	1
7	3257-32	Key - Woodruff	1
8	92-9023	Hydraulic Pump Assembly (Complete)	1
9	252-82	Bearing - Needle	2
10	25-3210	Seal - Lip	2
11	25-2510	Washer	2
12	49-8480	Shaft - Trunion	1
13	32151-46	Ring - Retaining	2
14	25-2460	Plug	2
15	237-86	O-Ring	4
16	25-2470	Kit - Shim Pack	2
17	25-2570	Spring - Relief Valve	1
18	83-7260	Cone - Relief Valve	2
19	67-8030	Plug Assembly (Incl. Ref. #20)	2
20	67-8040	O-Ring	2
21	92-7940	Housing - Charge Pump	1
22	67-8050	Bearing - Needle	1
23	67-8060	Seal - Lip	1

Ref. No.	Part No.	Description	No. Used
24	322-4	Screw - Cap Hex. Hd.	4
25	25-2680	Gerotor Assembly	1
26	25-2530	Pin - Straight	1
27	237-95	O-Ring	1
28	28-3670	Shaft - Trunion	1
32	25-2480	Spring - Charge Relief	1
34	32120-15	Ring - Retaining	1
35	251-8	Bearing - Ball	1
36	32120-11	Ring - Retaining	1
37	25-2450	Swash/Plate	1
38	32121-91	Pin - Coiled Spring	3
39	25-2380	Plate - Thrust	1
40	25-2390	Plate - Valve	1
41	25-2430	Pin - Straight	1
42	46-8400	Bearing - Needle	1
43	25-2400	Gasket	1
44	62-4290	O-Ring	2
45		Cap - Pump End	1
46	323-11	Screw - Cap Hex. Hd.	4
47	25-2490	Ball - Check Valve	2
48	25-2640	Spring - Check Valve	2
49	25-2650	Plug - Check Valve	2
50	3256-24	Washer	1
51	92-8777	Seal - O-Ring	2

*Not Illustrated



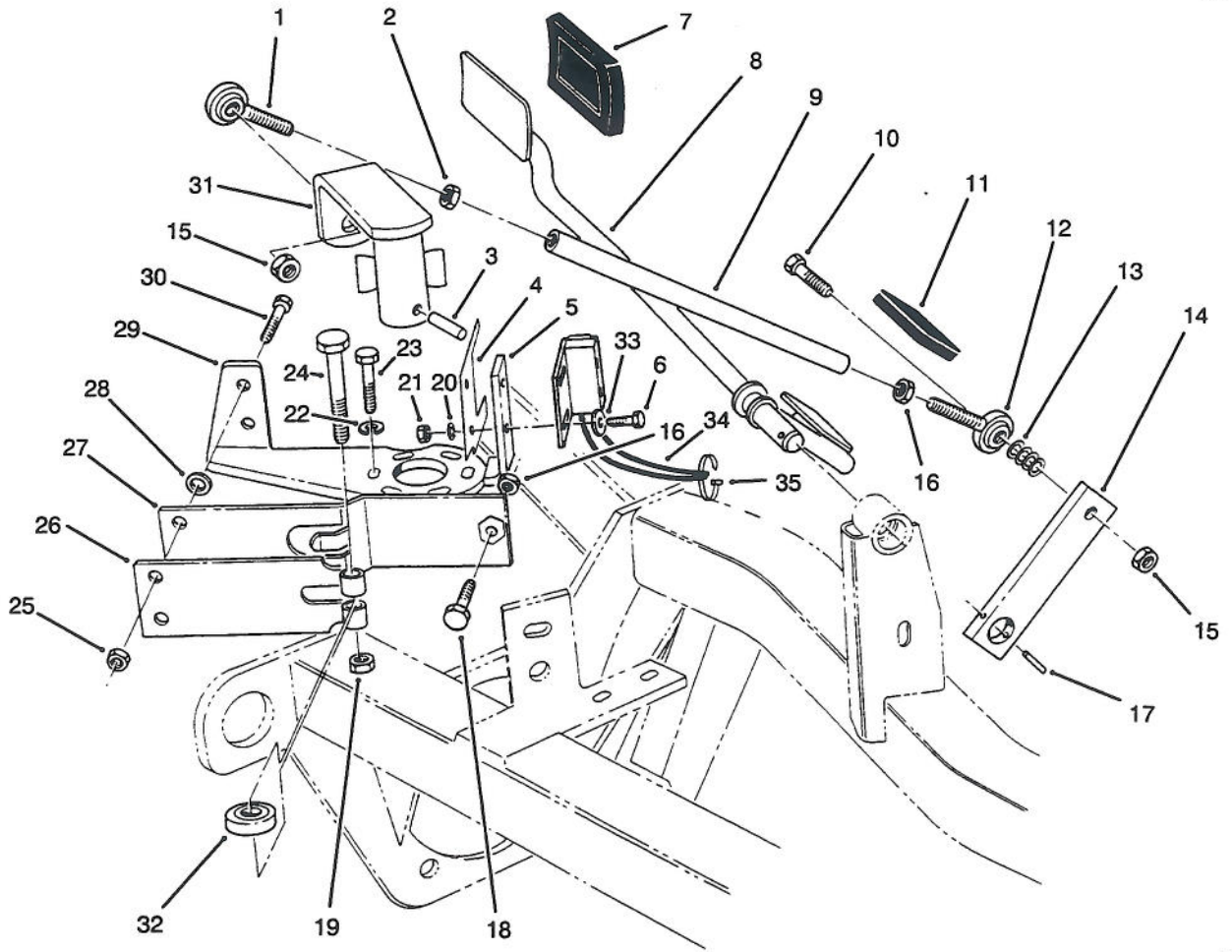
T-1809

HYDRAULIC PUMP ASSEMBLY NO. 92-9023 (Continued)

Ref. No.	Part No.	Description	No. Used
52	92-8776	Plug Assembly (Incl. Ref. #51)	2
*	49-8510	Kit - Charge Relief (Incl. Ref. #14-16, 18 & 32)	1

Ref. No.	Part No.	Description	No. Used
*	25-3180	Kit - Check Valve (Incl. Ref. #15, 47-49)	1
*	49-8520	Kit - Implement Relief (Incl. Ref. #14-18)	1

*Not Illustrated

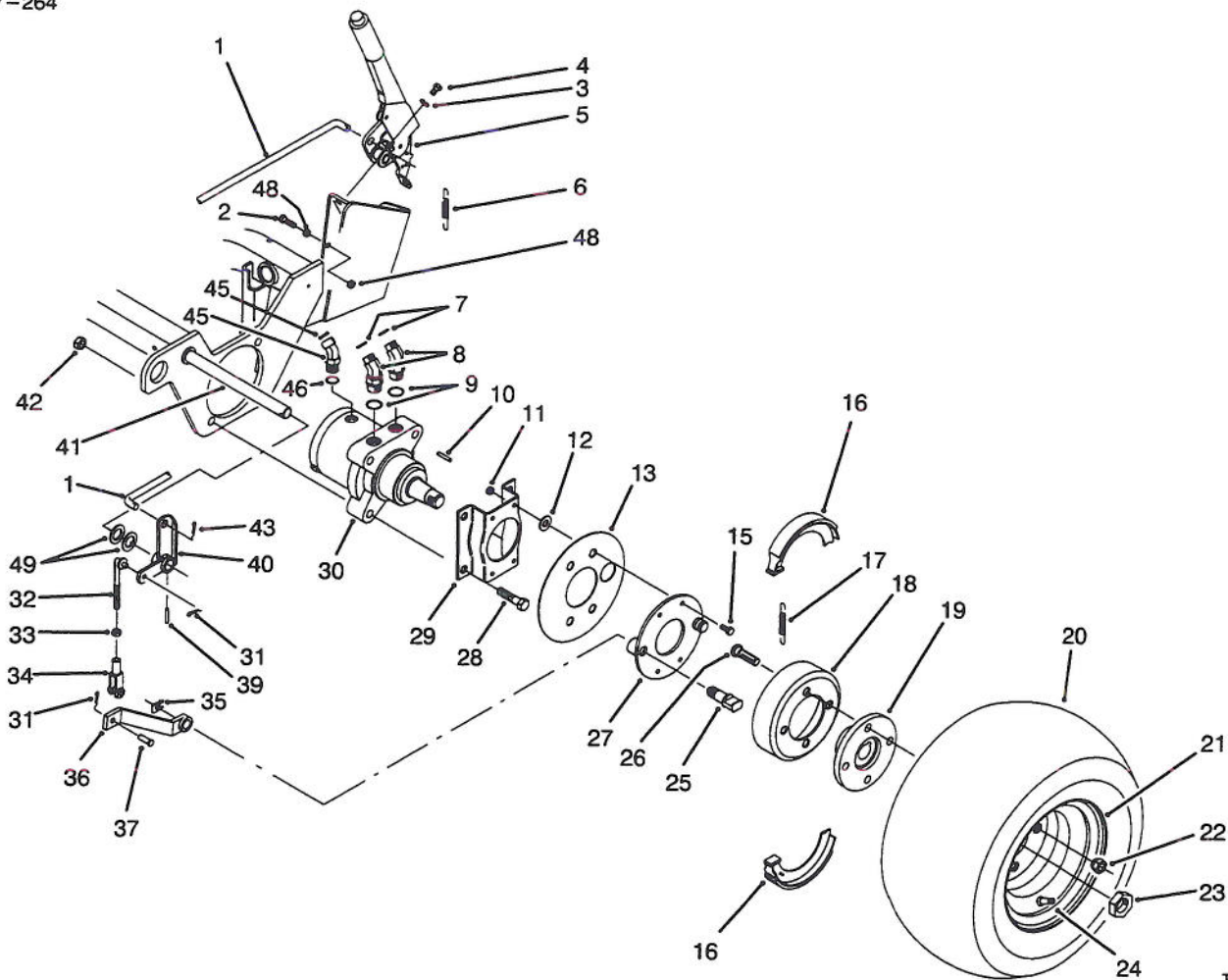


T-1069A

TRACTION CONTROLS ASSEMBLY

Ref. No.	Part No.	Description	No. Used
1	2411-53	Bearing - Rod End L.H.	1
2	3220-20	Nut - Jam L.H.	1
3	32121-24	Pin - Roll	1
4	46-8810	Stop - Spring	1
5	92-7905	Neutral Switch Assembly (Incl. Ref. #34)	1
6	3249-3	Screw - Rd. Hd. Machine	2
7	74-9100	Pad - Pedal Forward	1
8	76-2170	Pedal - Traction	1
9	76-0420	Rod - Pump Control	1
10	322-7	Capscrew - Hex. Nd.	2
11	74-9110	Pad - Pedal Reverse	1
12	2411-52	Bear - Rod End R.H.	1
13	3256-74	Washer - Flat	8
14	61-2610	Arm - Traction	1
15	32153-3	Nut - Lock	2
16	3220-2	Nut - Jam R.H.	1
17	32121-6	Pin - Roll	1

Ref. No.	Part No.	Description	No. Used
18	3210-7	Capscrew - Hex. Hd.	1
19	3296-29	Nut - Lock	1
20	3254-9	Washer - Lock	2
21	3217-29	Nut - Lock	2
22	3255-7	Washer - Lock	3
23	42-2040	Screw - Hex. Hd. Self Tap	3
24	322-17	Capscrew - Hex. Hd.	1
25	3296-16	Nut - Lock	2
26	29-6150	Spring - Leaf	1
27	29-6170	Spring - Extended Leaf	1
28	51-3150	Shim - Spring Arm	1
29	29-6120	Plate - Pump	1
30	321-6	Screw - Cap Hex. Hd.	2
31	61-2940	Lever - Pump	1
32	251-259	Bearing - Ball	1
33	3256-53	Washer - Flat	2
34	92-7906	Switch - Neutral	1
35	3290-378	Tie - Cable	1



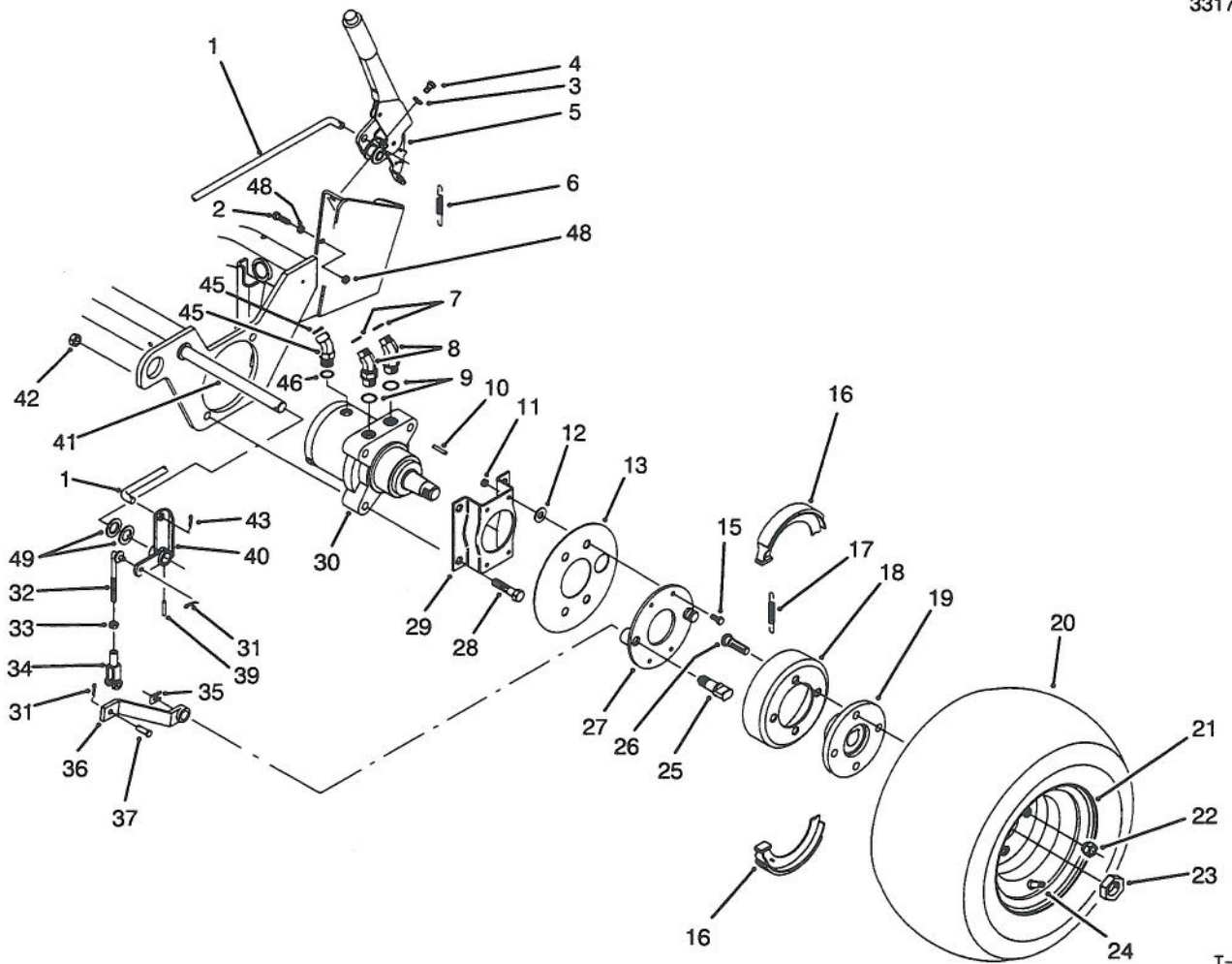
T-1416

FRONT WHEEL ASSEMBLY

Ref. No.	Part No.	Description	No. Used
1	83-9350	Rod - Parking Brake	1
2	322-17	Screw - Cap Hex. Hd.	1
3	3253-4	Washer - Lock	2
4	322-4	Screw - Hex. Washer Hd.	2
5	61-3990	Parking Brake Assembly	1
6	5-7290	Spring - Extension	1
7	237-30	Seal - O-Ring	4
8	340-89	Fitting - Hydraulic 45° (Incl. Ref. 7 & 9)	2
9	237-80	Seal - O-Ring	4
10	65-4640	Key - Square	2
11	3296-42	Nut - Lock	8
12	3256-16	Washer - Flat	8
13	83-9340	Shield - Grass	2
14	3253-3	Washer - Lock	8
15	321-5	Screw - Cap Hex. Hd.	8
16	70-9840	Shoe - Brake	4
17	70-9880	Spring - Extension	4
18	10-6821	Brake Drum Assembly (Incl. Ref. #19 & 26)	2
19	10-6870	Hub - Wheel	2
20	231-127	Tire	2
21	217-60	Rim	2

Ref. No.	Part No.	Description	No. Used
22	242-50	Nut - Lug	8
23	26-3790	Nut - Lock	2
24	232-27	Valve - Stem	2
25	70-9860	Pin - Pivot Brake	2
26	85-6540	Stud - Drive	8
27	70-9870	Plate - Brake	2
28	325-11	Screw - Cap Hex. Hd.	8
29	84-2000	Bracket - Brake	2
30	66-5291	Hydraulic Motor Assembly (Incl. Ref. #10)	2
31	3272-6	Pin - Cotter	4
32	84-1990	Rod - Adjusting	2
33	3220-2	Nut - Jam	2
34	282-2	Clevis	2
35	70-9850	Clip - Retaining	2
36	83-9250	Lever - Brake	2
37	283-1	Pin - Clevis	2
39	32121-79	Pin - Roll	2
40	83-9270	Pivot - Brake L.H.	1
*	83-9310	Pivot - Brake R.H.	1
41	83-9330	Shaft - Brake	1
42	3296-23	Nut - Lock	8
43	3272-7	Pin - Cotter	1

*Not Illustrated



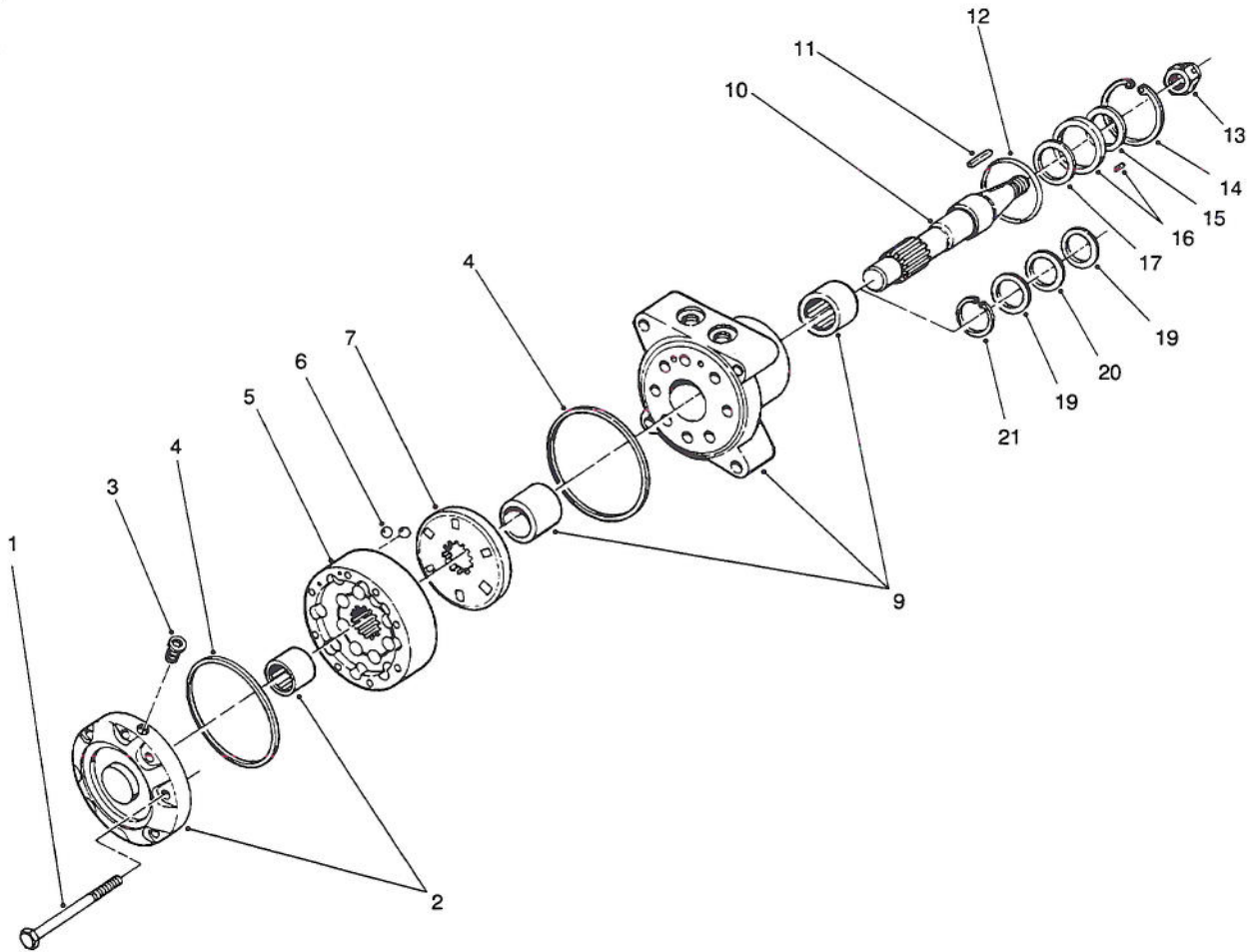
T-1416

FRONT WHEEL ASSEMBLY (Continued)

Ref. No.	Part No.	Description	No. Used
45	340-103	Fitting - Hydraulic 45° (Incl. Ref. #46 & 47) (For Left Wheel Motor)	1
*	340-140	Fitting - Hydraulic Tee (Incl. Ref. #46 & 47) (For Right Wheel Motor)	1
46	237-78	Seal - O-Ring	2

Ref. No.	Part No.	Description	No. Used
47	237-21	Seal - O-Ring	3
48	32128-20	Nut - Lock	2
49	3-6498	Washer	4
*	71-1500	Brake Assembly (Incl. Ref. #16, 17, 25, 27 & 35)	2

*Not Illustrated



T-0274

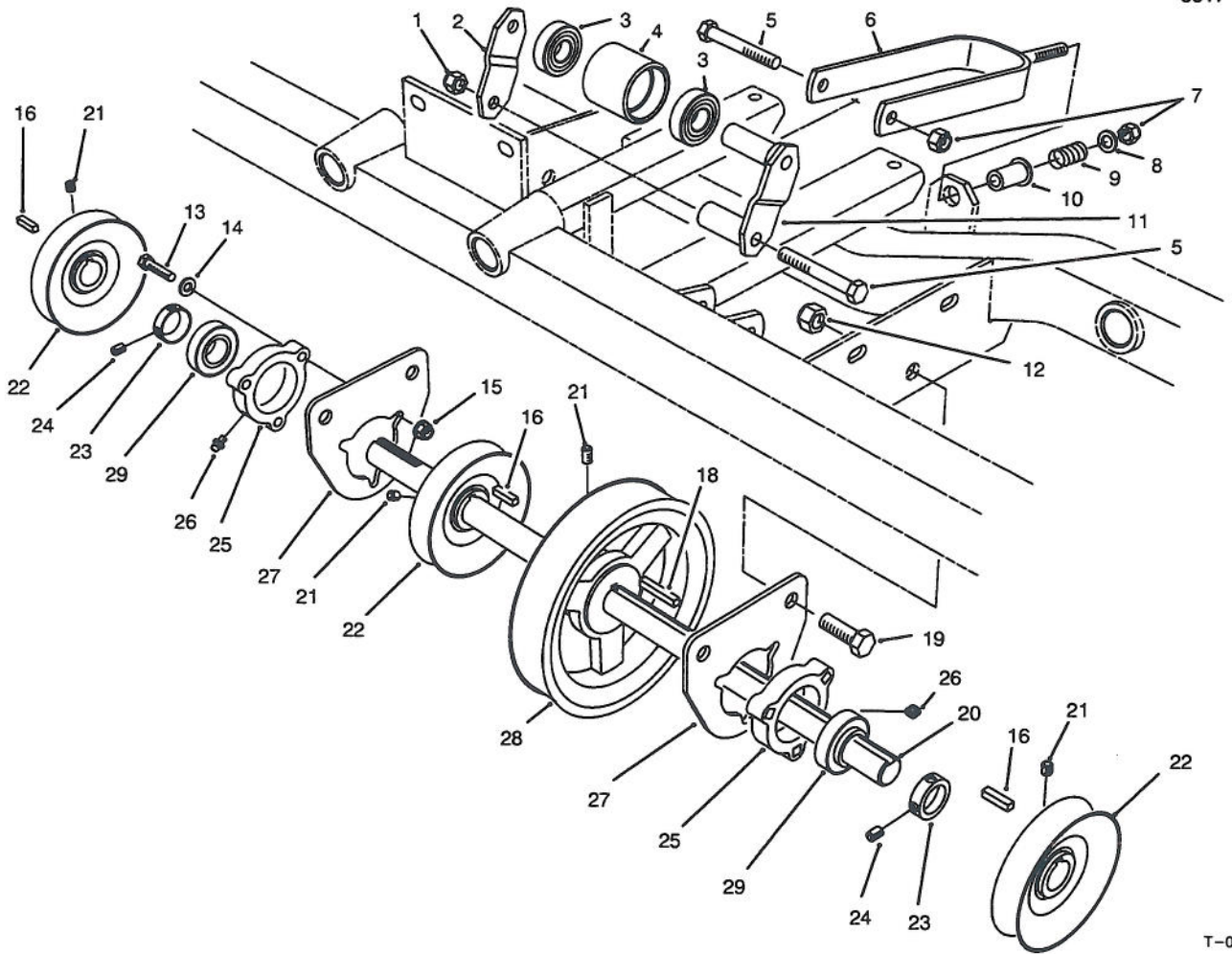
HYDRAULIC DRIVE MOTOR ASSEMBLY NO. 66-5291

Ref. No.	Part No.	Description	No. Used
1	65-4580	Screw - Cap Hex Hd.	8
2	65-4680	Cover & Bearing Assembly	1
3	65-4560	Plug - Hex (Hollow)	1
4	65-4570	Seal - Square Ring	2
5	66-6110	IGR Assembly	1
6	65-4550	Valve - Check Ball	2
7	70-8150	Plate - Valve	1
9	65-4670	Body & Bearing Assembly	1
10	92-1157	Shaft	1
11	3272-15	Key - Woodruff	1
12	65-4620	Seal - O-Ring	1

Ref. No.	Part No.	Description	No. Used
14	65-4500	Seal - Snap Ring	1
†15		Seal - Dust	1
†16		Retainer/Pin	1
†17		Seal - Lip	1
*	76-2350	Seal/Retainer Assembly (Incl. Ref. #15-17)	1
19	65-4600	Washer - Thrust	2
20	65-4610	Bearing - Thrust	1
21	65-4590	Ring - Snap	1
*	76-2360	Body Seal Kit (Incl. Ref. #4,12 & 15-17)	1

*Not Illustrated

†Not available from Toro as a replacement part.



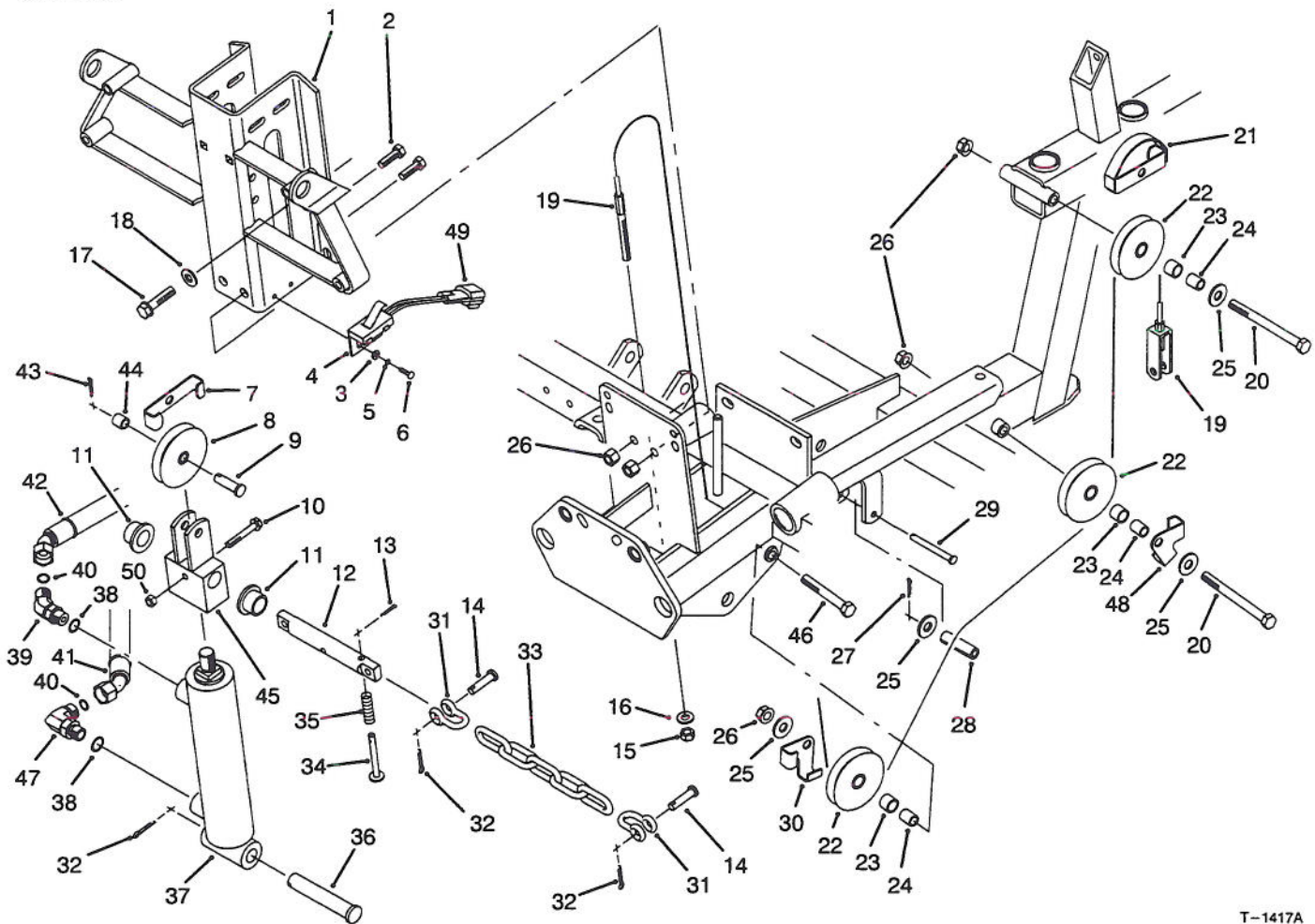
T-0276

JACKSHAFT ASSEMBLY

Ref. No.	Part No.	Description	No. Used
1	3296-39	Nut - Lock	2
2	67-7911	Strap - Idler Bracket	1
3	38-7820	Bearing - Idler	2
4	67-7750	Pulley - Idler	1
5	323-15	Screw - Cap Hex. Hd.	2
6	67-7890	Belt Tensioner W.A.	1
7	3296-59	Nut - Lock	1
8	3256-24	Washer - Flat	1
9	83-9690	Spring - Compression	1
10	83-9810	Bushing - Flange	1
11	67-7870	Idler Bracket W.A.	1
12	3296-23	Nut - Lock	4
13	322-17	Screw - Cap Hex. Hd.	6
14	3256-23	Washer - Flat	6
15	32128-25	Nut - Flange Lock	6
16	5-7280	Key - Square (Short)	3

Ref. No.	Part No.	Description	No. Used
18	67-7490	Key - Square (Long)	1
19	325-4	Screw - Cap Hex. Hd.	4
20	83-7820	Shaft - Drive	1
21	3242-4	Screw - Set	8
22	61-0140	Pulley - Jackshaft	3
23	251-77	Collar - Locking (Incl. Ref. #24)	2
24	3245-35	Screw - Set	4
25	76-2460	Bearing Assembly (Incl. Ref. #23, 26 & 29)	2
26	302-5	Fitting - Grease	2
27	61-2350	Mount - Bearing	2
28	61-0070	Pulley - Poly V	1
29	251-337	Bearing	2
*	13-1279	Idler Pulley Assembly (Incl. Ref. #3, 4 & 11)	1

*Not Illustrated

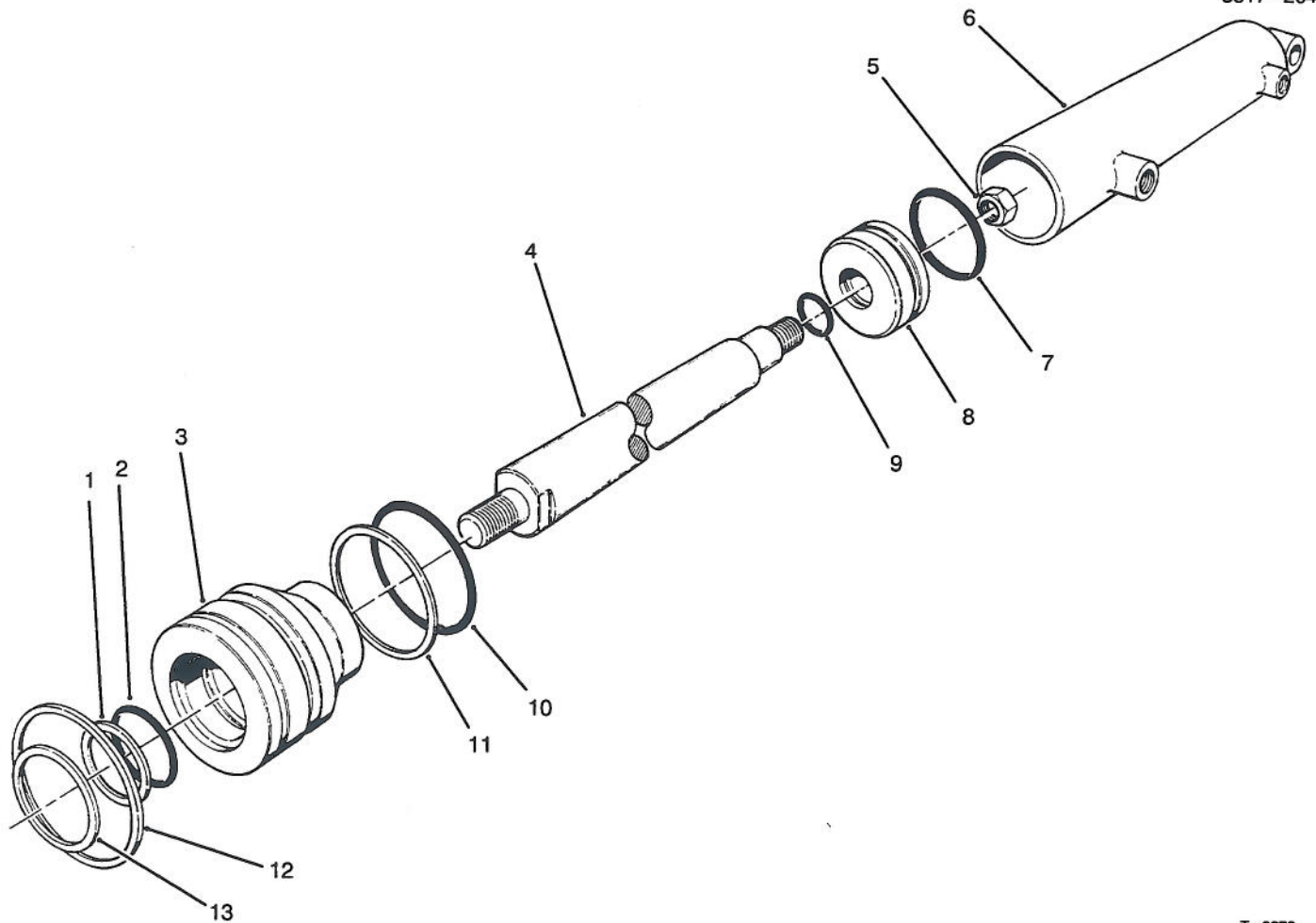


T-1417A

CUTTING UNIT LIFT ASSEMBLY

Ref. No.	Part No.	Description	No. Used
1	92-1840	Bracket - Cylinder & Cooler	1
2	323-6	Screw - Cap Hex. Hd.	2
3	3256-53	Washer - Flat	2
4	92-7905	Lift Switch Assembly (Incl. Ref. #49)	1
5	3254-9	Washer - Lock Internal	2
6	3249-5	Screw - Round Hd.	2
7	5-2655	Keeper - Cable	1
8	5-2653	Cable Pulley Assembly (Incl. Ref. #44)	1
9	283-42	Pin - Clevis	1
10	321-43	Screw - Hex. Flange Hd.	1
11	84-8440	Bushing - Flange	2
12	72-4190	Pin - Cylinder Guide	1
13	3272-4	Pin - Cotter	1
14	283-6	Pin - Clevis	4
15	3296-4	Nut - Lock	1
16	3256-23	Washer - Flat	1
17	11-0590	Screw - Thread Forming	4
18	3256-24	Washer - Flat	4
19	61-3260	Cable - Lift	1
20	323-23	Screw - Cap Hex. Hd.	2
21	61-3240	Keeper - Cable	1
22	61-3210	Cable Pulley Assembly (Incl. Ref. #23)	3
23	256-1	Bushing - Sleeve	3
24	61-3230	Spacer	3
25	3256-4	Washer - Flat	4

Ref. No.	Part No.	Description	No. Used
26	3296-39	Nut - Flange Lock	5
27	3272-4	Pin - Cotter	1
28	32121-124	Pin - Roll	1
29	283-79	Pin - Clevis	1
30	5-2656	Keeper - Cable	1
31	282-4	Clevis	4
32	3272-11	Pin - Cotter	5
33	61-3830	Chain - Lift	2
34	71-1380	Pin - Spring	1
35	71-1370	Spring - Compression	1
36	283-78	Pin - Clevis	1
37	76-0020	Hydraulic Cylinder Assembly	1
38	237-42	Seal - O-Ring	2
39	340-87	Fitting - Hydraulic 45° (Incl. Ref. #38 & 40)	1
40	237-22	Seal - O-Ring	2
41	61-2500	Hose - Hydraulic	1
42	61-2490	Hose - Hydraulic	1
43	3272-6	Pin - Cotter	1
44	61-2430	Hub - Lift	1
45	256-2	Bushing - Sleeve	1
46	323-13	Screw - Cap Hex. Hd.	1
47	340-77	Fitting - Hydraulic 90° (Incl. Ref. #38 & 40)	1
48	83-9130	Keeper - Cable	1
49	92-7906	Switch - Lift	1
50	3296-56	Nut - Lock	1



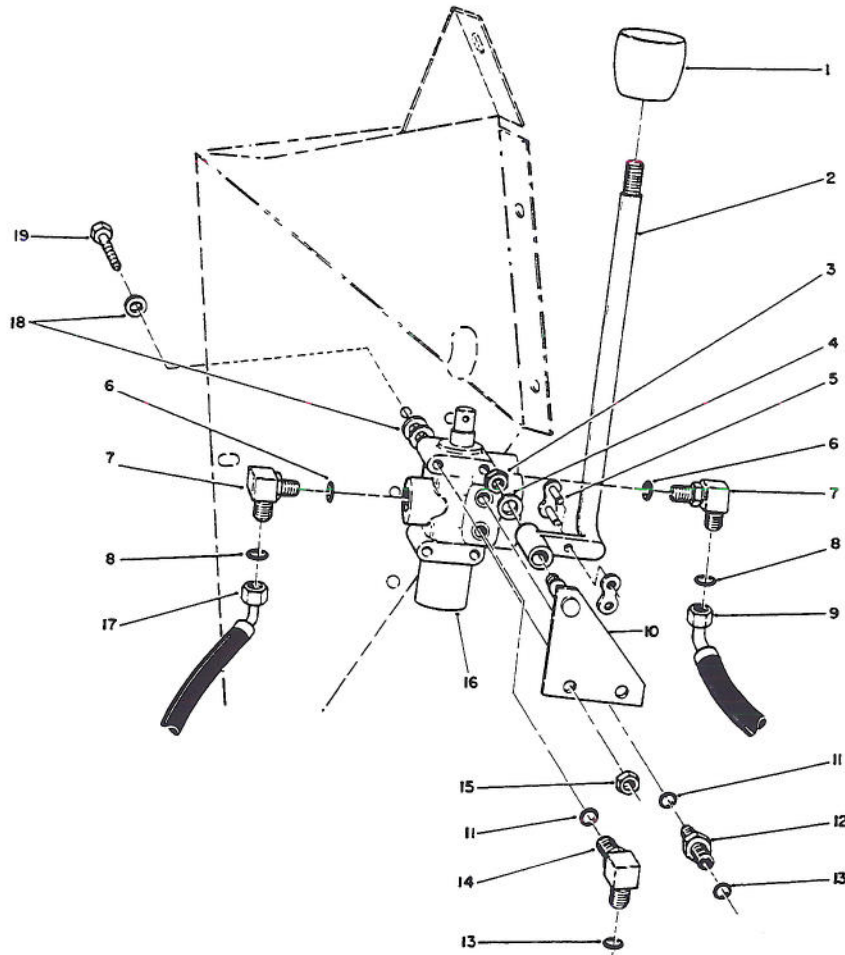
T-0278

HYDRAULIC CYLINDER ASSEMBLY NO. 76-0020

Ref. No.	Part No.	Description	No. Used
1		Washer - Backup	1
2		O-Ring	1
3	76-0090	Head	1
4	76-2320	Shaft	1
5	76-2330	Nut - Lock	1
6		Barrel	1
7		Uniring	1
8	76-0040	Piston	1

Ref. No.	Part No.	Description	No. Used
9		O-Ring	1
10		O-Ring	1
11		Washer - Backup	1
12	76-0050	Ring - Retaining	1
13		Seal-Dust	1
*	76-0030	Repair Kit (Incl. Ref. #1-2, 7, 9-11 &13)	1

*Not Illustrated

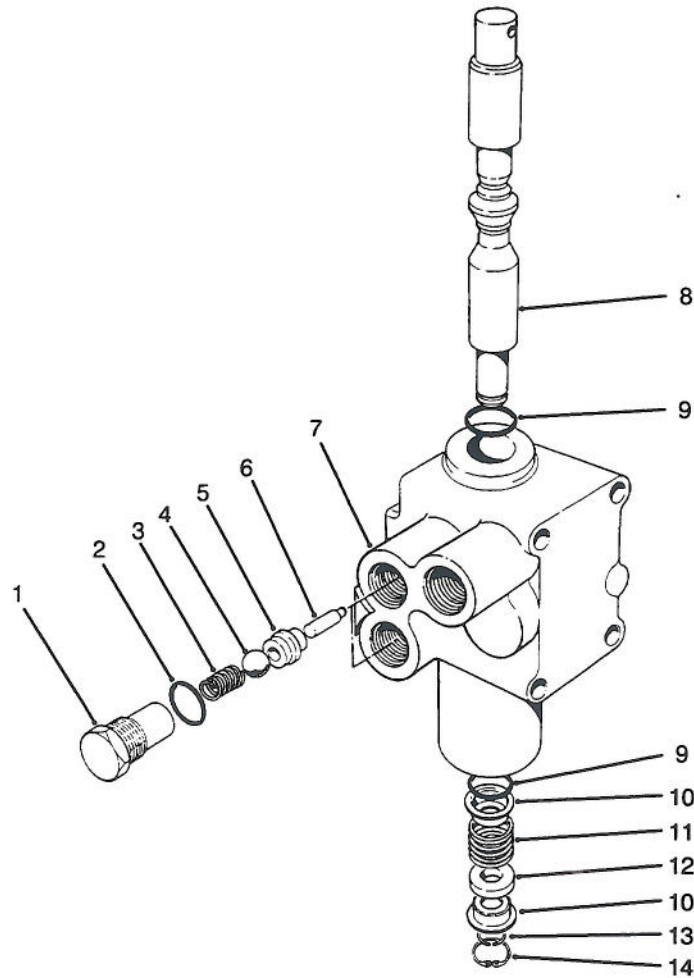


T-0279

CUTTING UNIT LIFT VALVE INSTALLATION ASSEMBLY

Ref. No.	Part No.	Description	No. Used
1	233-37	Knob	1
2	85-5160	Lever - Lift Valve	1
3	3296-39	Nut - Lock	1
4	3256-24	Washer	1
5	2710-16	Link - Connecting	1
6	237-79	Seal - O-Ring	1
7	340-99	Fitting - Hydraulic 90° (Incl. Ref. #6 & 8)	2
8	237-22	Seal - O-Ring	2
9	61-2510	Hose - Hydraulic	1
10	61-2720	Bracket - Lever	1

Ref. No.	Part No.	Description	No. Used
11	237-78	Seal - O-Ring	2
12	340-88	Fitting - Hydraulic Straight (Incl. Ref. #11 & 13)	1
13	237-21	Seal - O-Ring	2
14	340-97	Fitting - Hydraulic 90° (Incl. Ref. #14 & 16)	1
15	3296-16	Nut - Lock	3
16	43-1950	Valve - Hydraulic	1
17	61-2520	Hose - Hydraulic	1
18	3256-22	Washer - Flat	9
19	321-23	Screw - Cap Hex. Hd.	3

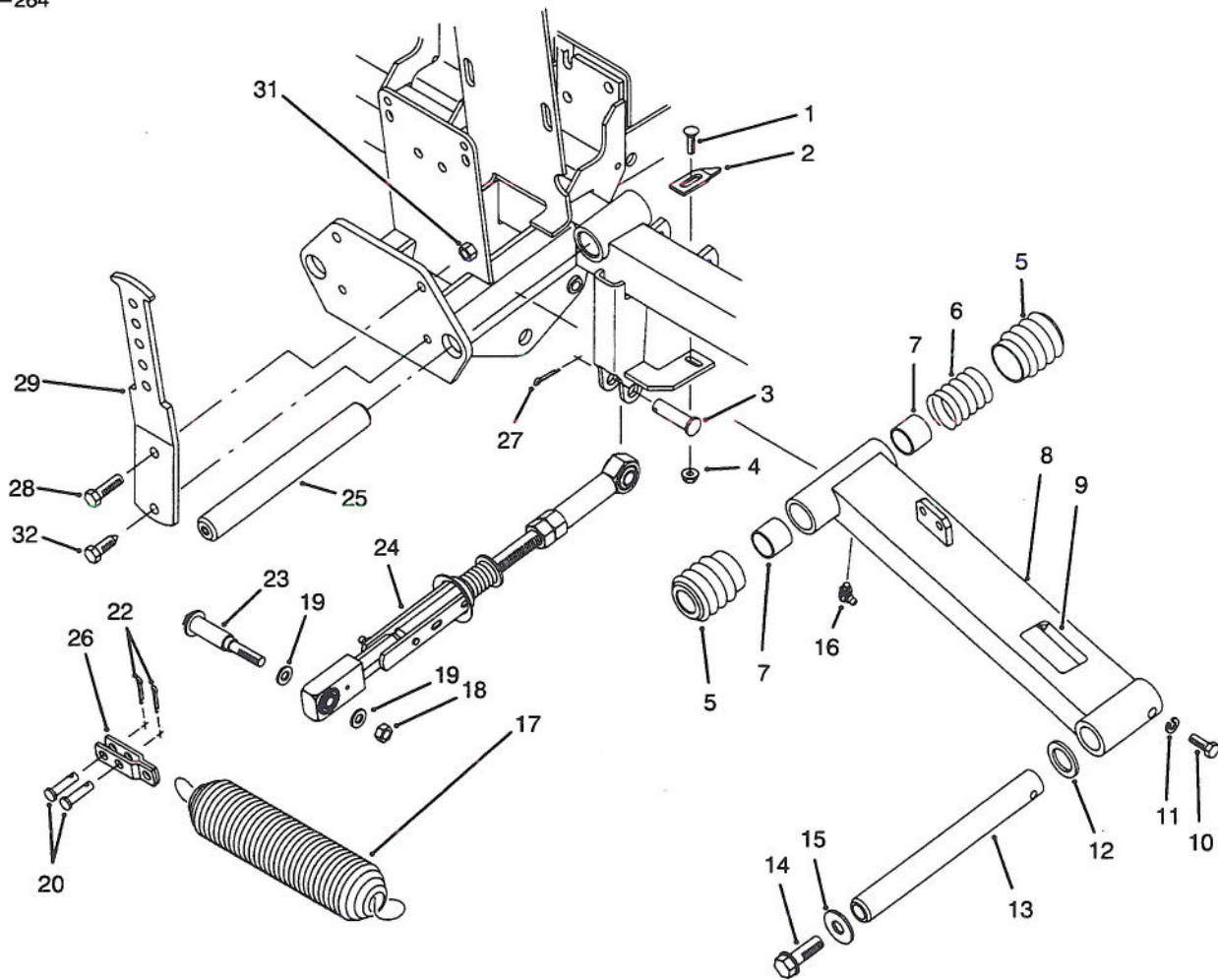


T-0280

CONTROL VALVE ASSEMBLY NO. 43-1950

Ref. No.	Part No.	Description	No. Used
1	22-8330	Plug	2
2	237-42	O-Ring	2
3	22-8340	Spring	2
4	22-8350	Ball	2
5	22-8370	Seat - Check Valve	2
6	22-8360	Pin - Cam	2
7		Body	1

Ref. No.	Part No.	Description	No. Used
8	22-8420	Spool	1
9	22-8500	O-Ring	2
10	22-8380	Retainer - Spring	2
11	22-8410	Spring	1
12	23-3030	Spacer	1
13	22-8480	Snap Ring - Spool	1
14	22-8490	Snap Ring	1



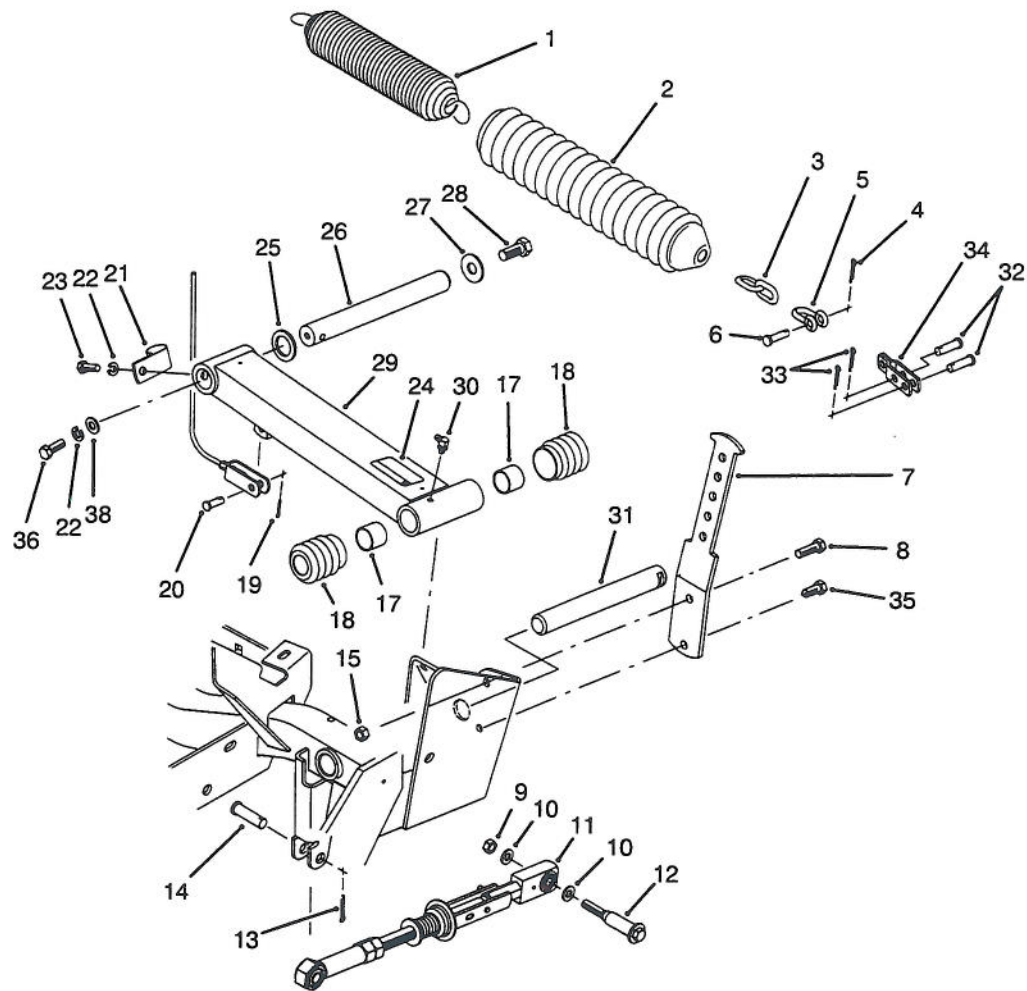
T-1419

FRONT CUTTING UNIT LIFT ARM ASSEMBLY

Ref. No.	Part No.	Description	No. Used
1	3229-1	Bolt - Carriage	2
2	76-2430	Scraper - Pulley	2
3	283-40	Pin - Clevis	2
4	32128-33	Nut - Flange Lock	2
5	61-7250	Boot	4
6	61-3270	Spring - Compression	2
7	3-0348	Bushing - Sleeve	4
8	16-1159	Lift Arm Assembly L.H. (Incl. Ref. #7, 9 & 16)	1
*	16-1169	Lift Arm Assembly R.H. (Incl. Ref. #7, 9 & 16)	1
9	55-4300	Decal - Warning	2
9	93-6696	Decal - Warning (Europe)	2
10	322-4	Screw - Cap Hex. Hd.	2
11	3253-4	Washer - Lock	2
12	256-115	Washer - Thrust	2
13	92-1815	Rod - Pivot	2

Ref. No.	Part No.	Description	No. Used
14	3234-32	Screw - Hex. Flange Hd.	2
15	3256-6	Washer - Flat	2
16	302-60	Fitting - Grease	2
17	5-0743	Spring - Extension	2
18	3296-59	Nut - Lock	2
19	3256-45	Washer - Flat	4
20	283-75	Pin - Clevis	4
22	3272-10	Pin - Cotter	4
23	76-0370	Bolt - Shoulder	2
24	83-7900	Belt Tensioner Assembly	2
25	92-1812	Shaft - Lift Pivot	2
26	92-1822	Shackle	2
27	3272-13	Pin - Cotter	2
28	323-7	Screw - Cap Hex. Hd.	2
29	92-1818	Arm - Tension	2
31	3296-39	Nut - Lock	2
32	32104-6	Screw - Cap Hex. Hd.	2

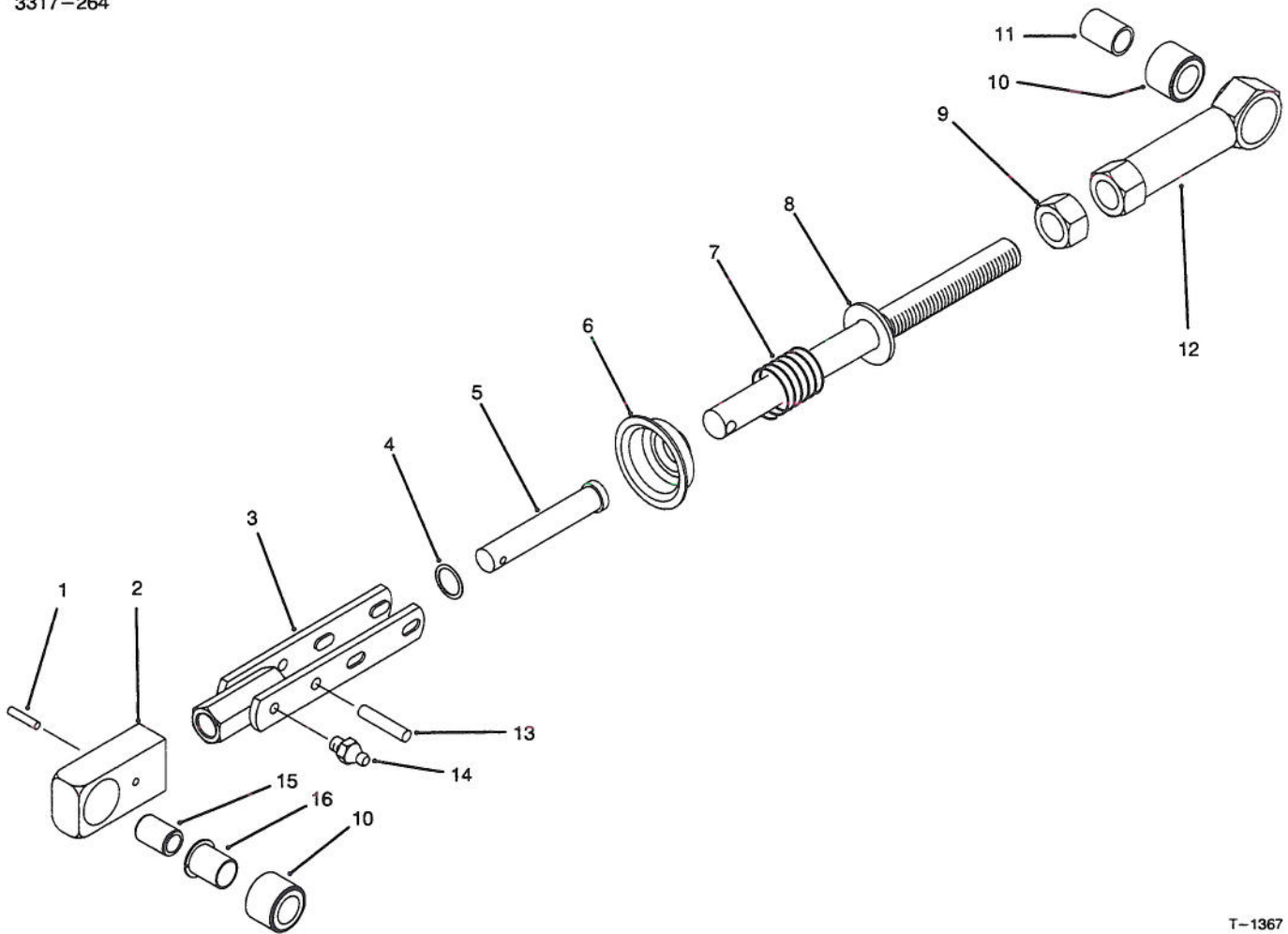
*Not Illustrated



T-1366A

REAR CUTTING UNIT LIFT ARM ASSEMBLY

Ref. No.	Part No.	Description	No. Used	Ref. No.	Part No.	Description	No. Used
1	5-0743	Spring - Extension	1	21	18-2970	Clamp - R	1
2	62-7240	Cover - Spring	1	22	3253-4	Washer - Lock	2
3	62-7300	Chain	1	23	322-4	Screw - Cap Hex. Hd.	1
4	3272-11	Pin - Cotter	1	24	55-4300	Decal - Warning	1
5	282-4	Clevis	1	24	93-6696	Decal - Warning (Europe)	1
6	283-6	Pin - Clevis	1	25	256-115	Washer - Thrust	1
7	92-1818	Arm - Tension	1	26	92-1815	Rod - Pivot	1
8	323-7	Screw - Cap Hex. Hd.	1	27	3256-6	Washer - Flat	1
9	3296-59	Nut - Lock	2	28	3234-32	Screw - Cap Hex. Hd.	1
10	3256-45	Washer - Flat	4	29	16-1089	Lift Arm Assembly (Incl. Ref. #17, 24 & 30)	1
11	83-7900	Belt Tensioner Assembly	2	30	302-60	Fitting - Grease	1
12	76-0370	Bolt - Shoulder	2	31	92-1812	Shaft - Lift Pivot	1
13	3272-13	Pin - Cotter	2	32	283-75	Pin - Clevis	2
14	283-40	Pin - Clevis	2	33	3272-10	Pin - Cotter	2
15	3296-39	Nut - Lock	1	34	92-1822	Shackle	1
17	3-0348	Bushing - Sleeve	2	35	32104-6	Screw - Cap Hex. Hd.	1
18	62-7250	Boot	2	36	322-26	Screw - Cap Hex. Hd.	1
19	3272-6	Pin - Cotter	1	38	3256-57	Washer - Flat	1
20	283-1	Pin - Clevis	1				



T-1367

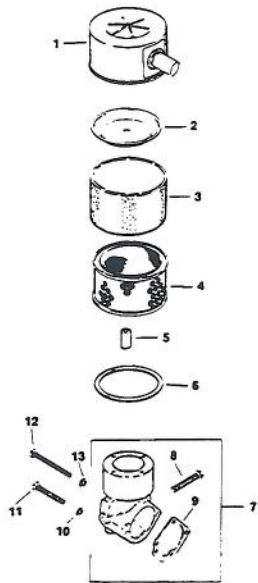
BELT TENSIONER ASSEMBLY NO. 83-7900

Ref. No.	Part No.	Description	No. Used
1	32121-23	Pin - Roll	1
2	76-0350	Housing - Bushing	1
3	83-7930	Yoke	1
4	3256-54	Washer - Flat	1
5	283-55	Pin - Clevis	1
6	76-0360	Cup - Retainer	1
7	76-0410	Spring - Compression	1
8	83-7910	Rod	1

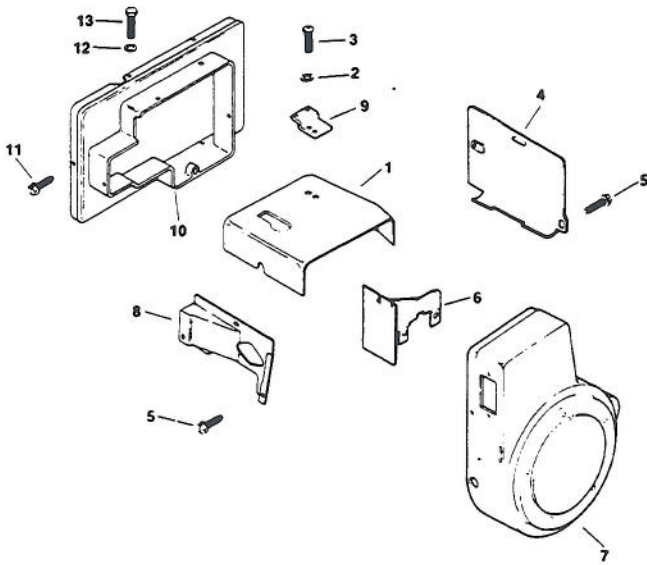
Ref. No.	Part No.	Description	No. Used
9	3218-6	Nut - Jam	1
10	56-9510	Bushing Assembly	2
11	256-173	Bushing - Sleeve	1
12	76-0300	Housing - Bushing	1
13	32121-9	Pin - Roll	1
14	302-5	Fitting - Grease	1
15	76-0390	Spacer	1
16	56-9520	Bushing - Nyliner	1

ENGINE KOHLER MODEL NO. M16QS SPEC NO. 711563

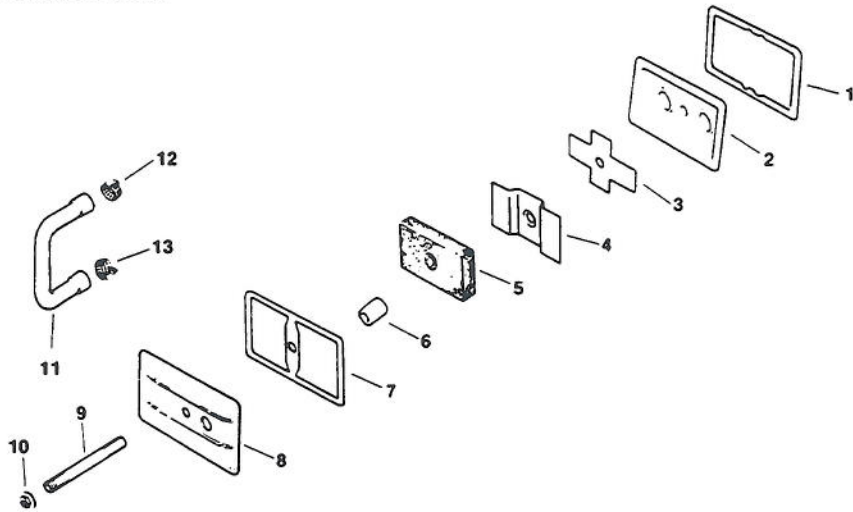
Air Intake



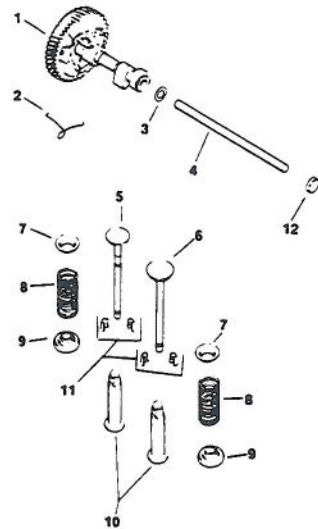
Baffles & Shroud



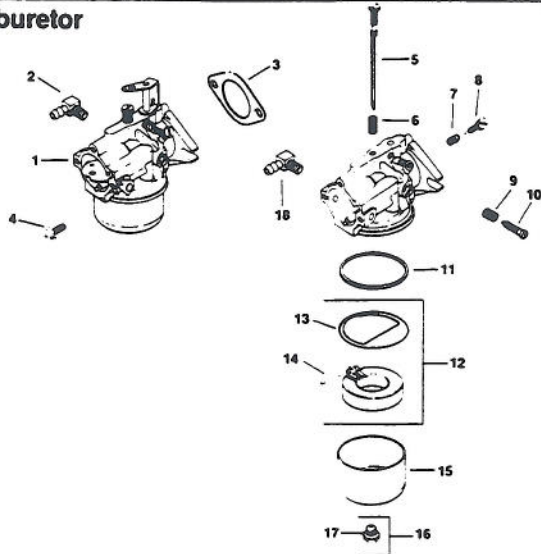
Breather & Vent



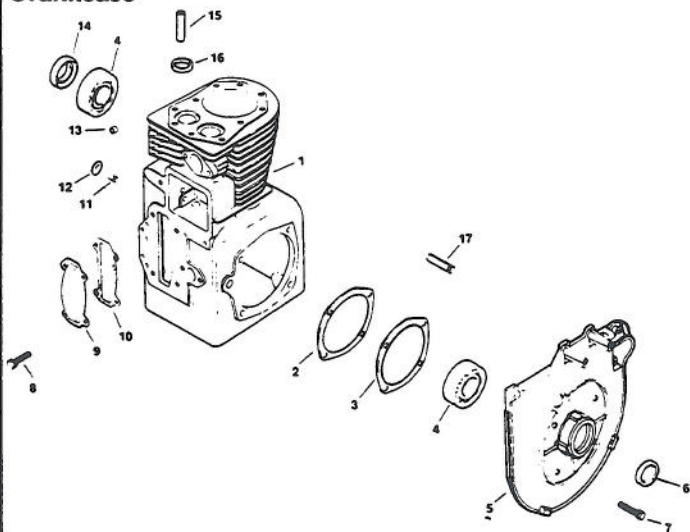
Camshaft & Valves



Carburetor



Crankcase

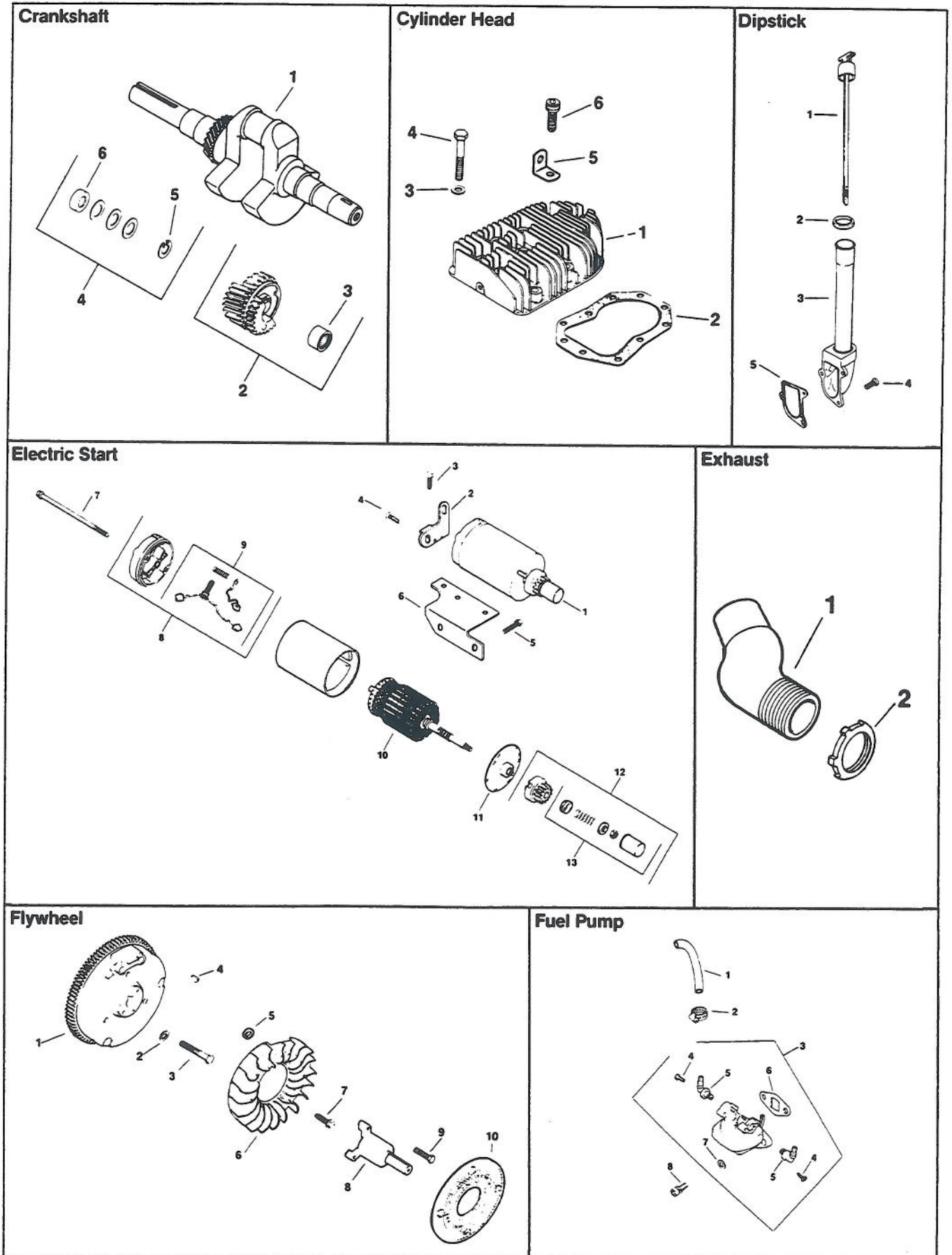


ENGINE KOHLER MODEL NO. M16QS SPEC NO. 711563

Ref. No.	Part No.	Description	No. Used
Air Intake			
1	52 096 26	Cover – Air Cleaner	1
2	52 082 04	Cover – Element	1
3	45 083 01	Precleaner	1
4	45 083 02	Element – Air Cleaner	1
5	231032	Seal	1
6	47 041 11	Gasket – Base	1
7	48 754 03	Kit – Air Cleaner Elbow (Incl. Ref. #8 & 9)	1
8	52 086 11	Screw – Self Tap	1
9	25 041 06	Gasket – Air Cleaner Elbow	1
10	X-22-9	Washer – I.T.L.W.	2
11	X-50-57	Screw – Pan Hd. Mach.	2
12	X-50-37	Screw – Pan Hd. Mach.	1
13	X-25-79	Washer – Plain	1
Baffles & Shroud			
1	45 063 08	Baffle – Head	1
2	X-25-53	Washer – Plain	1
3	47 086 08	Screw – Pozidriv T.H.	1
4	47 063 10	Baffle – Cylinder	1
5	52 086 11	Screw – Hex Wash. Hd.	6
6	47 063 07	Baffle – Inner	1
7	47 027 42	Housing – Blower	1
8	47 063 06	Baffle – Side Air	1
9	47 126 23	Bracket – Duct	1
10	47 755 33	Kit – Air Duct	1
11	X-67-64	Screw – Hex Wash. Hd.	3
12	X-25-20	Washer – Plain	1
13	X-154A	Screw – H.C.	1
Breather & Vent			
1	235048	Gasket – Breather Plate	1
2	235631	Plate – Breather	1
3	235047	Reed – Breather	1
4	235117	Baffle – Breather	1
5	235118	Filter – Breather	1
6	231032	Seal – Breather	1
7	275144	Gasket – Valve Cover	1
8	275839	Cover – Valve	1
9	275220	Stud – Valve Cover	1
10	X-799-1	Palnut	1
11	47 326 02	Hose	1
12	X-426-3	Clamp – Hose	1
13	X-426-9	Clamp – Hose	1
Camshaft & Valves			
1	47 010 11	Camshaft Assembly	1
2	47 089 01	Spring – Actuating	1
3	275066	Spacer .005	A/R
	275067	Spacer.010	A/R
4	47 380 09	Pin – Camshaft	1
5	237672	Valve – Exhaust	1
6	235582	Valve – Intake	1
7	235011	Retainer – Upper Spring	2
8	235168	Spring – Valve	2
9	52 413 01	Rotator – Valve	2
10	D-235327	Tappet	2
11	41 755 10	Kit – Retainer	2
12	X-702-3	Plug – Cup	1

Ref. No.	Part No.	Description	No. Used
Carburetor			
1	45 053 76	Carburetor Assembly (Incl. Ref. #5-18)	1
2	25 155 02	Connector – Hose	1
3	47 049 01	Gasket – Carburetor	1
4	X-770-1	Screw – Slted. Hd.	2
5	45 103 01	Needle – Main Fuel Adj.	1
6	200383	Spring – Main Fuel	1
7	200380	Spring – Idle Fuel	1
8	275231	Needle – Idle Fuel Adj.	1
9	232555	Spring – Idle Speed	1
10	232556	Screw – Idle Speed Adj.	1
11	200375	Gasket – Bowl	1
12	25 757 03	Kit – Float (Incl. Ref. #13)	1
13	25 041 02	Gasket – Bowl Baffle	1
14	200376	Pin – Float Hinge	1
15	235448	Bowl – Fuel	1
16	47 100 06	Screw – Bowl Retainer (Incl. Ref. #17)	1
17	200372	Gasket – Bowl Screw	1
18	X-391-10	Connector – Hose	1
	25 757 02	Kit – Carburetor Repair	1
	25 757 05	Kit – Choke/Throttle Repair	1
Crankcase			
1		Block Cylinder Assembly (Incl. Ref. #13,15,16) (USE: Miniblock 4578233)	1
2	47 422 05	Gasket – Shim	A/R
3	47 041 09	Gasket – Bearing Plate	1
4	235376	Bearing – Ball	2
5	47 146 11	Plate – Bearing	1
6	47 032 06	Seal – Front Oil	1
7	X-159-2	Screw – H.C.	4
8	X-132-6	Screw – H.C.	4
9	235026	Cover – Camshaft	1
10	235025	Gasket – Camshaft Cover	1
11	235125-5	Shaft – Governor Gear	1
12	X-230-11	Plug – Expansion	1
13	234866	Bearing – Gov. Cross Shaft	1
14	47 032 07	Seal – Rear Oil	1
15	230265	Insert – Valve	2
16	235007-5	Guide – Valve	2
17	236559	Shaft – Balance Gear Stub	3

ENGINE KOHLER MODEL NO. M16QS SPEC NO. 711563

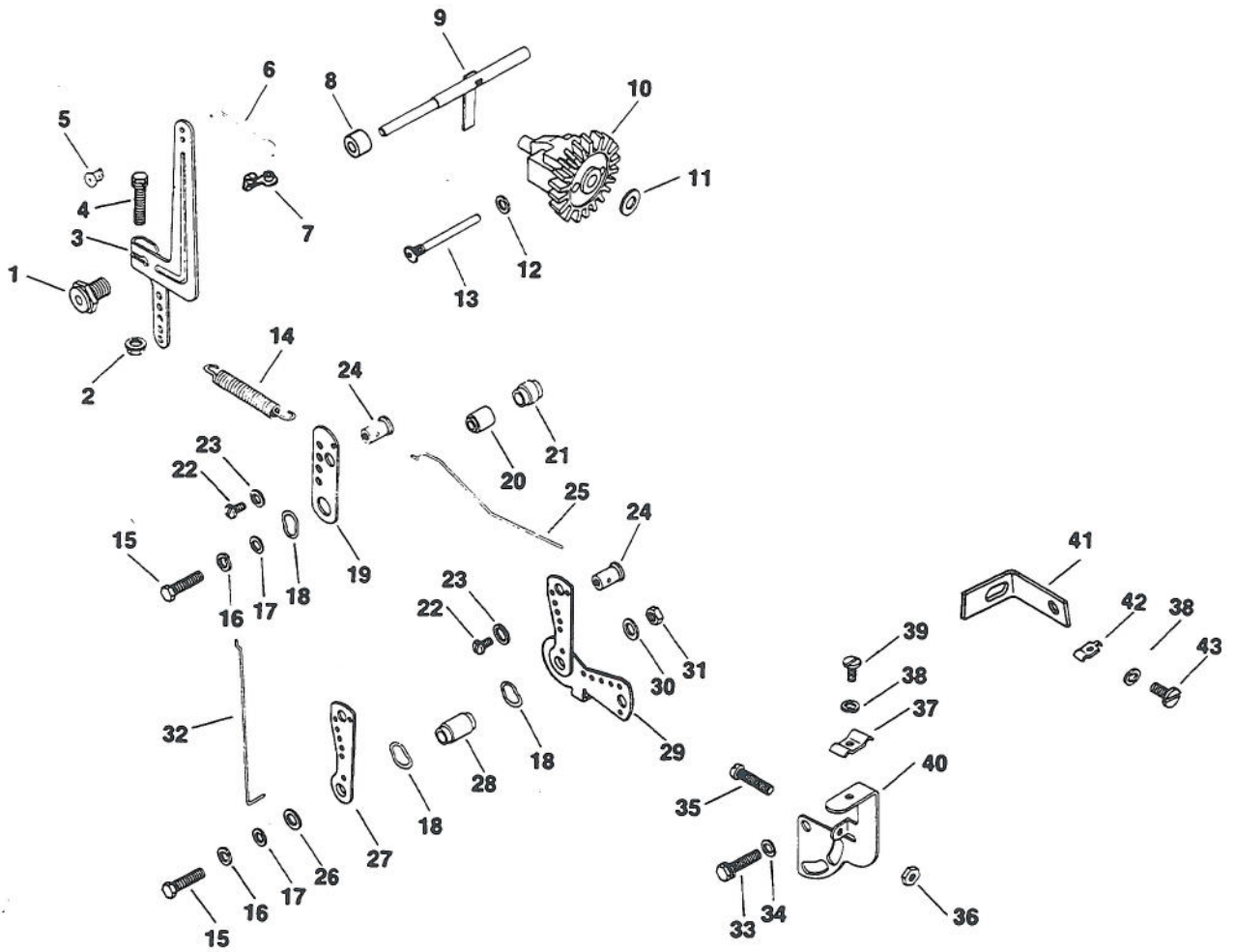


ENGINE KOHLER MODEL NO. M16QS SPEC NO. 711563

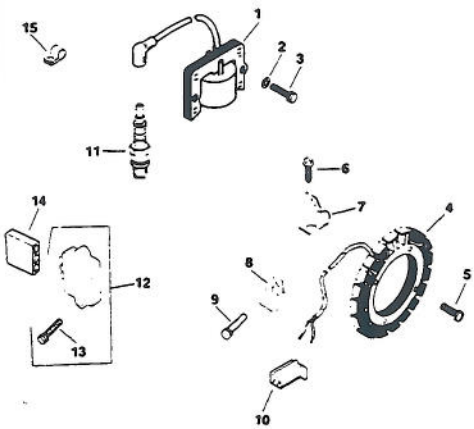
Ref. No.	Part No.	Description	No. Used
Crankshaft			
1	45 014 86	Crankshaft	
2	45 043 03	Gear Assembly (Incl. Ref. #3)	3
3	47 030 01	Bearing - Needle	3
4	47 755 01	Kit - Spacer (Incl. Ref. #5 & 6)	1
5	X-269-34	Retainer	3
6	237769	Spacer	3
Cylinder Head			
1	45 015 09	Head - Cylinder	1
2	45 041 17	Gasket - Head	1
3	270889	Washer - Plain	10
4	270158	Screw - H.C.	9
5	47 445 02	Strap - Lifting	1
6	47 086 17	Screw - Hex Socket Hd.	1
Dipstick			
1	47 038 27	Dipstick	1
2	41 153 01	O-Ring	1
3	47 029 06	Adapter - Oil Fill	1
4	X-131-2	Screw - F.H.	3
5	237064	Gasket	1
Electric Start			
1	41 098 04	Starter Assembly (Incl. Ref. #7-13)	1
2	45 126 17	Brace - Tail	1
3	X-67-83	Screw - Hex Wash. Hd.	1
4	X-67-62	Screw - Hex Wash. Hd.	1
5	X-159-2	Screw - H.C.	2
6	47 126 29	Bracket - Solenoid	1
7	41 086 19	Bolt - Thru	2
8	41 227 04	Cap - Commutator End (Incl. Ref. #9)	1
9	52 755 15	Kit - Brush	1
10	45 170 02	Armature	1
11	41 227 03	Cap - Drive End	1
12	47 755 07	Kit - Drive (Incl. Ref. #13)	1
13	47 755 13	Kit - Drive Parts	1
	25 450 03	Tag - Caution	1
	52 357 01	Lubricant - Starter	

Ref. No.	Part No.	Description	No. Used
Exhaust			
1	45 054 04	Elbow - Exhaust	1
2	45 100 01	Nut - Lock	1
Flywheel			
1	47 025 53	Flywheel	1
2	52 468 15	Washer - Plain	1
3	25 086 24	Screw - Hex Mach.	1
4	X-46-3	Key - Woodruff	1
5	25 112 04	Spacer	4
6	25 157 01	Fan	1
7	25 086 21	Screw - Hex Wash. Hd.	4
8	235954	Shaft - Front Drive	1
9	X-159-2	Screw - H.C.	4
10	25 162 03	Screen - Grass	1
Fuel Pump			
1	25 353 01	Line - Fuel	1
2	X-426-9	Clamp - Hose	2
3	47 559 08	Pump - Fuel Assembly (Incl. Ref. #4-7)	1
4	25 086 35	Screw - Tapping	2
5	25 294 01	Fitting & O-Ring - 90°	2
6	25 041 05	Gasket - Fuel Pump	1
7	X-25-63	Washer - Plain	2
8	X-174-2	Screw - F.H.M.	2

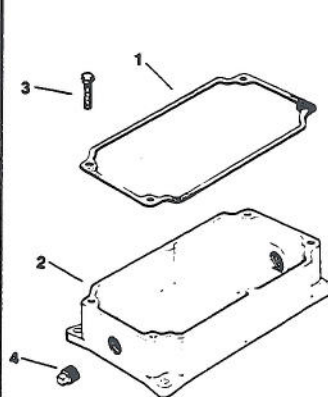
Governor



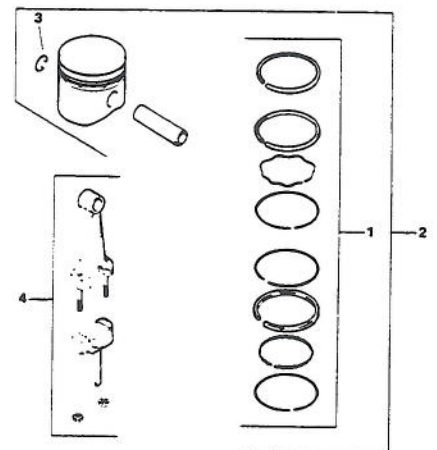
Ignition



Oil Pan



Piston & Rod



ENGINE KOHLER MODEL NO. M16QS SPEC NO. 711563

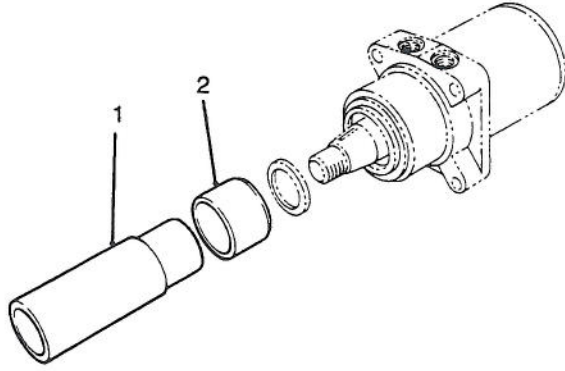
Ref. No.	Part No.	Description	No. Used
Governor			
1	235476	Bushing - Governor	1
2	X-799-1	Palnut	1
3	47 090 20	Lever - Governor	1
4	X-776-1	Screw - H.C.	1
5	25 158 09	Bushing - Linkage Rtng.	1
6	47 079 05	Linkage - Governor	1
7	47 158 07	Bushing - Linkage Rtng.	1
8	X-400-80	Spacer	1
9	A-235256-S	Kit - Governor Cross Shaft	1
10	A-235743-S	Kit - Governor Gear	1
11	237022	Washer-Thrust	1
12	25 468 01	Washer - Plain	1
13	231355	Pin - Governor Stop	1
14	235496	Spring - Governor	1
15	X-5-26	Screw - H.C.	2
16	X-20-1	Washer - Lock	2
17	X-25-63	Washer - Plain	2
18	275690	Washer - Wave	3
19	235086	Bracket - Speed Control	1
20	235085	Spacer	1
21	X-384-2	Spacer	1
22	X-51-8	Screw - Std. Pan Hd.	1
23	X-25-102	Washer - Plain	1
24	48 755 10	Kit - Clamp (Incl. Ref. #22 & 23)	1
25	47 079 08	Linkage - Throttle	1
26	X-25-82	Washer - Plain	1
27	47 090 05	Lever - Choke	1
28	47 112 19	Spacer	1
29	47 090 09	Lever - Throttle	1
30	X-25-95	Washer - Plain	1
31	X-81-1	Nut - Hex	1
32	47 079 01	Linkage - Choke	1
33	X-132-6	Screw - H.C.	1
34	X-25-72	Washer - Plain	1
35	232556	Screw	1
36	X-72-4	Nut - Hex	1
37	1223701	Clamp - Cable	1
38	X-19-1	Washer-Lock	2
39	X-67-38	Screw	1
40	47 126 13	Bracket - Choke	1
41	47 126 36	Bracket - Choke	1
†42	81-1690	Clamp - Cable	1
43	X-15-5	Screw - F.H.M.	1

Ref. No.	Part No.	Description	No. Used
Ignition			
1	47 584 02	Module - Ignition	
2	X-25-79	Washer - Plain	2
3	X-156-1	Screw - H.C.	2
4	237878	Kit - Stator	1
5	X-67-51	Screw - Hex. Wash. Hd.	4
6	X-67-59	Screw - Hex. Wash. Hd.	1
7	X-728-1	Clip (Mounts to Bearing Plate)	1
8	235173	Clip (Mounts to Cylinder Block)	1
9	X-132-6	Screw	1
10	41 155 03	Connector - Male	1
11	235041-5	Spark Plug RH-10	1
12	25 755 03	Kit - Rectifier-Regulator (Incl. Ref. #13)	1
13	X-132-5	Screw - H.C.	2
14	236602	Connector - Female	1
15	210281	Clip - Hi-Tension Lead	1
	47 518 38	Lead - White, Module to Connector (23"-18 g. - insulated push on tab - uninsulated push on tab terminals)	1
	47 518 46	Lead - Violet, Rectifier Regulator to Connector (12.5" - 14-gauge - uninsulated push on tab terminals)	1
Oil Pan			
1	235057	Gasket - Oil Pan	1
2	47 199 10	Pan-Oil	1
3	X-159-3	Screw - H.C.	4
4	X-75-6	Plug - Sq. Hd. Solid	2
Piston & Rod			
1	45 108 10	Ring Set (Std. & .003)	1
	45 108 11	Ring Set(.010)	1
	45 108 12	Ring Set (.020)	1
	45 108 13	Ring Set (.030)	1
2	45 874 11	Piston w/Ring Set (Std.)	1
	45 874 12	Piston w/Ring Set (.003)	1
	45 874 13	Piston w/Ring Set (.010)	1
	45 874 14	Piston w/Ring Set (.020)	1
	45 874 15	Piston w/Ring Set (.030)	1
3	47 018 01	Retainer - Piston Pin	2
4	45 067 24	Connecting Rod (Std.)	1
	45 067 25	Connecting Rod (.010)	
	45 782 33	Miniblock	1
	47 004 02	Gasket Set w/o Seals	1
	45 755 12	Gasket Set w/Seals	1

†Available from your local TORO Distributor

SPECIAL TOOLS

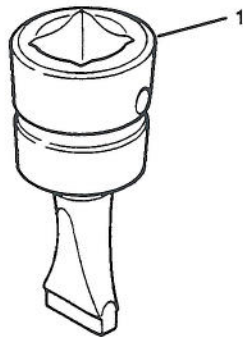
DRIVE MOTOR SEAL INSTALLATION TOOL NO. *19-2660



T-0728

Ref. No.	Part No.	Description	No. Used
1		Driver - Seal	1
2		Holder - Seal	1

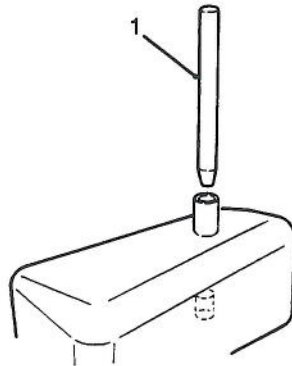
BEDKNIFE SCREW TOOL NO. *TOR510880



T-0729

Ref. No.	Part No.	Description	No. Used
1		Tool - Bedknife Screw	1

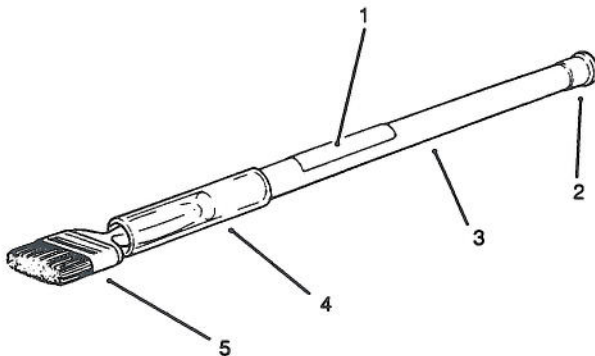
HYDRAULIC OIL RESERVOIR PLUG NO. *88-9220



T-1213

Ref. No.	Part No.	Description	No. Used
1		Plug - Reservoir	1

BACKLAPPING BRUSH ASSEMBLY NO. *TOR299100



T-0731

Ref. No.	Part No.	Description	No. Used
1	12-9140	Decal	1
2	2410-18	Plug	1
3	29-9080	Handle	1
4	29-9090	Hose - Handle	1
5	36-4310	Brush	1

*Obtain these items directly from OTC 2013 4th St. Owatonna, MN. 55060 1-800-533-0492
(in Minnesota and Canada 1-507-455-7050) Fax. 507-455-7011.

TORO PART NUMBER INDEX

3317-264

Part No.	Description	Pg. Ref. No. No. Qty.	Part No.	Description	Pg. Ref. No. No. Qty.
3-0348	Bushing - Sleeve	28 7 4	28-3670	Shaft - Trunion	17 28 1
3-0348	Bushing - Sleeve	29 17 2	28-4210	Solenoid - Starter	14 12 1
3-6498	Washer	21 49 4	28-6180	Pin	6 47 1
3-6498	Washer - Thrust	4 17 A/R	28-8080	Boot - Battery Terminal	14 6 1
5-0743	Spring - Extension	29 1 1	29-6120	Plate - Pump	19 29 1
5-0743	Spring - Extension	28 17 2	29-6150	Spring - Leaf	19 26 1
5-2653	Cable Pulley Assembly	24 8 1	29-6170	Spring - Extended Leaf	19 27 1
5-2655	Keeper - Cable	24 7 1	37-9590	Spring	6 21 1
5-2656	Keeper - Cable	24 30 1	38-7820	Bearing - Idler	23 3 2
5-4723	Spring - Compression	9 31 1	38-8000	Filter - Fuel	8 5 1
5-7280	Key - Square (Short)	23 16 3	42-2040	Screw - Hex. Hd. Self Tap	19 23 3
5-7290	Spring - Extension	20 6 1	43-1950	Valve - Hydraulic	26 16 1
10-4850	Spring - Compression	2 44 2	43-8600	Spring - Compression	6 29 1
10-6821	Brake Drum Assembly	20 18 2	43-8610	Guide - Spring & Ball Seat	6 30 1
10-6870	Hub - Wheel	20 19 2	43-8620	Guide - Switch Pin	6 25 1
10-7070	Key-Square	11 5 1	43-8860	Plunger - Switch	6 26 1
10-7130	Wire - Battery/Solenoid	10 3 1	43-8870	Boot - Switch	6 20 1
10-8120	Bolt - Battery	14 8 2	44-2212	Lamp - Pilot	9 3 1
11-0590	Screw - Thread Forming	24 17 4	44-8310	Ring - Retaining	12 3 2
11-0590	Screw - Cap Hex. Hd.	14 19 2	44-8320	Spring - Compression	12 10 3
12-3270	Screw - Cap Hex. Hd.	11 30 4	44-8330	Spacer - Pulley Bearing	12 6 1
13-1279	Idler Pulley Assembly	23 * 1	44-8350	Field Assembly	12 1 1
16-1089	Lift Arm Assembly	29 29 1	44-8360	Field Coil, Rotor & Bearing	12 4 1
16-1159	Lift Arm Assembly L.H.	28 8 1	46-8400	Bearing - Needle	17 42 1
16-1169	Lift Arm Assembly R.H.	28 * 1	46-8810	Stop - Spring	19 4 1
18-2970	Clamp - R	29 21 1	47-2980	Hose - Fuel	8 3 1
20-0151	Rod End Assembly	5 5 1	47-2988	Hose - Fuel	8 7 1
21-0141	Rod End Assembly	4 15 1	48-1800	Cylinder Block Kit	17 5 1
22-8330	Plug	27 1 2	49-2040	Screw - Tapping	11 13 5
22-8340	Spring	27 3 2	49-8480	Shaft - Trunion	17 12 1
22-8350	Ball	27 4 2	49-8510	Kit - Charge Relief	18 * 1
22-8360	Pin - Cam	27 6 2	49-8520	Kit - Implement Relief	18 * 1
22-8370	Seat - Check Valve	27 5 2	51-3150	Shim - Spring Arm	19 28 1
22-8380	Retainer - Spring	27 10 2	54-0110	Filter - Oil	16 28 1
22-8410	Spring	27 11 1	55-4300	Decal - Warning	28 9 2
22-8420	Spool	27 8 1	55-4300	Decal - Warning	29 24 1
22-8480	Snap Ring- Spool	27 13 1	56-2230	Hose - Fuel	8 9 1
22-8490	Snap Ring	27 14 1	56-7982	Sleeve - Protective	15 * 1
22-8500	O-Ring	27 9 2	56-9510	Bushing Assembly	30 10 2
23-0660	Switch - Key	9 19 1	56-9520	Bushing - Nyliner	30 16 1
23-3030	Spacer	27 12 1	57-3210	Screw - Hex. Washer Hd.	1 32 2
23-8910	Fitting - 90° Hose Elbow	16 26 2	59-9810	Module - Ignition	11 16 1
25-2380	Plate - Thrust	17 39 1	61-0020	Shroud - Muffler	11 31 1
25-2390	Plate - Valve	17 40 1	61-0030	Tank-Fuel	8 10 1
25-2400	Gasket	17 43 1	61-0070	Pulley - Poly V	23 28 1
25-2430	Pin - Straight	17 41 1	61-0100	Tank - Hydraulic	14 25 1
25-2450	Swash/Plate	17 37 1	61-0140	Pulley - Jackshaft	23 22 3
25-2460	Plug	17 14 2	61-1960	Axle - Wheel	5 7 1
25-2470	Kit - Shim Pack	17 16 2	61-2070	Rod - Steering	4 13 1
25-2480	Spring - Charge Relief	17 32 1	61-2070	Rod - Steering	5 18 1
25-2490	Ball - Check Valve	17 47 2	61-2090	Steering Column Assembly	4 8 1
25-2510	Washer	17 11 2	61-2120	Bracket - Air Cleaner	11 6 1
25-2530	Pin - Straight	17 26 1	61-2220	Spacer	8 {20 4
25-2570	Spring - Relief Valve	17 17 1	61-2230	Plate - Pump Mount	16 13 1
25-2630	Ring	17 3 1	61-2350	Mount - Bearing	23 27 2
25-2640	Spring - Check Valve	17 48 2	61-2430	Hub - Lift	24 45 1
25-2650	Plug - Check Valve	17 49 2	61-2490	Hose - Hydraulic	24 42 1
25-2680	Gerotor Assembly	17 25 1	61-2490	Hose Assembly	13 2 1
25-3180	Kit - Check Valve	18 * 1	61-2500	Hose - Hydraulic	24 41 1
25-3210	Seal - Lip	17 10 2	61-2500	Hose Assembly	13 1 1
26-3790	Nut - Lock	20 23 2	61-2510	Hose - Hydraulic	26 9 1
27-9870	Pin - Seat Spring	6 28 1	61-2510	Hydraulic Hose Assy. Lower	13 10 1
28-0120	Bracket - Hinge L.H.	1 19 1	61-2520	Hose - Hydraulic	26 17 1
28-0130	Bracket - Hinge R.H.	2 42 1	61-2520	Hydraulic Hose Assy. Upper	13 8 1

*Not Illustrated

TORO PART NUMBER INDEX (Cont.)

3317-264

Part No.	Description	Pg. Ref. No. No. Qty.	Part No.	Description	Pg. Ref. No. No. Qty.
61-2540	Hose - Hydraulic	16 8 1	65-4580	Screw - Cap Hex Hd.	22 1 8
61-2540	Hose - Hydraulic	13 13 1	65-4590	Ring - Snap	22 21 1
61-2550	Hose - Hydraulic	13 11 1	65-4600	Washer - Thrust	22 19 2
61-2550	Hose - Hydraulic	16 27 1	65-4610	Bearing - Thrust	22 20 1
61-2610	Arm - Traction	19 14 1	65-4620	Seal - O-Ring	22 12 1
61-2660	Wire - Solenoid/Starter	10 1 1	65-4640	Key - Square	20 10 2
61-2670	Wire - Ground	10 2 1	65-4670	Body & Bearing Assembly	22 9 1
61-2680	Weight - Standard	8 14 1	65-4680	Cover & Bearing Assembly	22 2 1
61-2710	Fitting - 90° Hose Elbow	16 6 1	66-0120	Knob	9 2 2
61-2720	Bracket - Lever	26 10 1	66-5291	Hydraulic Motor Assembly	20 30 2
61-2790	Screen - Filler	14 28 1	66-5340	Grille - Front	2 38 1
61-2940	Lever-Pump	19 31 1	66-6110	IGR Assembly	22 5 1
61-3060	Tube - Hydraulic R.H.	13 3 2	66-6120	Pad-Foot	1 27 1
61-3060	Tube - Hydraulic R.H.	16 33 2	66-6840	Decal - Hot	14 26 1
61-3070	Tube - Hyd. L.H. (Rear)	16 25 1	66-6840	Decal - Hot	11 47 1
61-3070	Tube - Hydraulic L.H. Rear	13 15 1	67-7490	Key - Square (Long)	23 18 1
61-3080	Tube - Hyd. L.H. (Front)	16 24 1	67-7750	Pulley - Idler	23 4 1
61-3080	Tube - Hydraulic L.H. Front	13 16 1	67-7870	Idler Bracket W.A.	23 11 1
61-3210	Cable Pulley Assembly	24 22 3	67-7890	Belt Tensioner W.A.	23 6 1
61-3230	Spacer	24 24 3	67-7911	Strap - Idler Bracket	23 2 1
61-3240	Keeper - Cable	24 21 1	67-8020	Shaft - Pump	17 6 1
61-3260	Cable - Lift	24 19 1	67-8030	Plug Assembly	17 19 2
61-3270	Spring - Compression	28 6 2	67-8040	O-Ring	17 20 2
61-3310	Plate - Toro Logo	8 13 1	67-8050	Bearing - Needle	17 22 1
61-3320	Pulley- Pump	16 17 1	67-8060	Seal - Lip	17 23 1
61-3340	Bushing - Taper	11 46 1	68-4210	Spacer - Wheel	5 8 2
61-3350	Bushing - Taper	16 19 1	70-7080	Spacer - Clutch	11 18 1
61-3390	Belt - Poly-V	11 25 1	70-8020	Clutch Assembly	11 21 1
61-3470	Hose	11 11 1	70-8030	Key	11 36 1
61-3550	Valve - Ball	8 8 1	70-8040	Washer - Flat	11 22 1
61-3770	Head - Filter	16 29 1	70-8150	Plate - Valve	22 7 1
61-3830	Chain - Lift	24 33 2	70-9840	Shoe - Brake	20 16 4
61-3840	Decal - Reelmaster 216	6 16 2	70-9850	Clip - Retaining	20 35 2
61-3880	Panel - Access R.H.	7 52 1	70-9860	Pin - Pivot Brake	20 25 2
61-3990	Parking Brake Assembly	20 5 1	70-9870	Plate - Brake	20 27 2
61-7250	Boot	28 5 4	70-9880	Spring - Extension	20 17 4
62-4290	O-Ring	17 44 2	71-1370	Spring - Compression	24 35 1
62-5140	Weight - 8 Blade	8 * 1	71-1380	Pin - Spring	24 34 1
62-5250	Armature & Pulley Assembly	12 5 1	71-1500	Brake Assembly	21 * 2
62-5330	Bracket - Side Panel	6 7 1	72-4150	Shield - Heat	1 24 1
62-5400	Hood Assembly	1 5 1	72-4190	Pin - Cylinder Guide	24 12 1
62-7170	Spacer	6 39 1	72-4320	Switch - Neutral	6 31 1
62-7190	Spacer	1 30 1	72-4350	Panel - Access L.H.	6 19 1
62-7240	Cover - Spring	29 2 1	72-4360	Footrest - L.H.	1 29 1
62-7250	Boot	29 18 2	72-4790	Clamp - Battery	14 2 1
62-7300	Chain	29 3 1	72-9540	Bracket - Heat Shield	1 23 1
62-7320	Stop - Traction Pedal	1 9 1	74-0720	Tube - Manual	6 45 1
62-7350	Slide - Pedal Stop	1 11 2	74-9100	Pad - Pedal Forward	19 7 1
62-7400	Decal - Toro Logo	1 4 1	74-9110	Pad - Pedal Reverse	19 11 1
63-4880	Hose - Hydraulic	13 9 1	75-6820	Meter - Hour	9 1 1
63-4880	Hydraulic Hose Assembly	15 18 1	75-7730	Spacer	5 2 1
63-4890	Hose - Hydraulic	13 7 1	75-9260	Support - Hydraulic Tank	6 2 1
63-4890	Hydraulic Hose Assembly	15 15 1	75-9310	Latch - Hood	1 6 1
63-5080	Pressure Sequence Valve	15 12 1	75-9320	Bushing - Hood Latch	9 33 1
63-5400	Exchanger - Heat	15 30 1	75-9330	Pin - Hood Latch	9 30 1
63-8360	Key	9 9 1	76-0020	Hydraulic Cylinder Assembly	24 37 1
63-8770	Fitting - 45° Orifice	15 11 1	76-0030	Repair Kit	25 * 1
63-8790	Cartridge Valve Assembly	15 10 1	76-0040	Piston	25 8 1
63-8800	Seal Kit	15 * 1	76-0050	Ring - Retaining	25 12 1
63-8940	Shield - Cooler	15 17 1	76-0070	Bracket - Interlock Module	11 15 1
65-4500	Seal - Snap Ring	22 14 1	76-0080	Collar - Bearing	12 7 1
65-4550	Valve - Check Ball	22 6 2	76-0090	Head	25 3 1
65-4560	Plug - Hex (Hollow)	22 3 1	76-0130	Hood Stop Chain Assembly	1 22 1
65-4570	Seal - Square Ring	22 4 2	76-0190	Cap-Oil	14 17 1

*Not Illustrated

TORO PART NUMBER INDEX (Cont.)

Part No.	Description	Pg. Ref. No. No. Qty.	Part No.	Description	Pg. Ref. No. No. Qty.
76-0200	Oil Cap Assembly	14 * 1	84-8440	Bushing - Flange	24 11 2
76-0220	Foam - Oil Filter	14 9 1	85-5160	Lever - Lift Valve	26 2 1
76-0240	Dipstick Assembly	14 29 1	85-5230	Bracket - Seat Pivot	7 53 2
76-0300	Housing - Bushing	30 12 1	85-5330	Plate - Seat	6 14 1
76-0350	Housing - Bushing	30 2 1	85-5340	Tube - Pivot	6 48 2
76-0360	Cup - Retainer	30 6 1	85-6540	Stud - Drive	20 26 8
76-0370	Bolt - Shoulder	29 12 2	88-8220	Valve - By-Pass	17 4 1
76-0370	Bolt - Shoulder	28 23 2	88-9550	Decal - Service Information	6 34 1
76-0390	Spacer	30 15 1	92-31	Gear - Steering	4 16 1
76-0410	Spring - Compression	30 7 1	92-1157	Shaft	22 10 1
76-0420	Rod - Pump Control	19 9 1	92-1810	Arm - Torque	11 19 1
76-0440	Battery Support W.A.	14 10 1	92-1812	Shaft - Lift Pivot	28 25 2
76-0500	Cover - Reservoir Support	6 41 1	92-1812	Shaft - Lift Pivot	29 31 1
76-1420	Wheel - Steering	4 10 1	92-1813	Spacer - Torque Arm	11 20 1
76-2170	Pedal - Traction	19 8 1	92-1814	Spacer - Torque Arm	11 51 1
76-2200	Footrest - Traction	1 12 1	92-1815	Rod - Pivot	28 13 2
76-2220	Adjustment Yoke Assembly	16 31 1	92-1815	Rod - Pivot	29 26 1
76-2260	Pad - Footrest	3 3 1	92-1818	Arm - Tension	29 7 1
76-2260	Pad - Footrest	1 13 1	92-1818	Arm - Tension	28 29 2
76-2320	Shaft	25 4 1	92-1819	Pulley - Engine	11 45 1
76-2330	Nut - Lock	25 5 1	92-1820	Frame Assembly	4 19 1
76-2350	Seal/Retainer Assembly	22 * 1	92-1821	V-Belt - Pump	16 16 1
76-2360	Body Seal Kit	22 * 1	92-1822	Shackle	28 26 2
76-2430	Scraper - Pulley	28 2 2	92-1822	Shackle	29 34 1
76-2460	Bearing Assembly	23 25 2	92-1840	Bracket - Cylinder & Cooler	24 1 1
76-2520	Hydraulic Hose	16 1 2	92-1841	Nut - Hood Pivot	2 41 2
76-2520	Hydraulic Hose Assembly	13 4 2	92-2406	Hose - Hydraulic	13 12 1
76-2530	Hose - Hydraulic	13 6 1	92-2406	Hydraulic Hose Assembly	15 32 1
76-2530	Hydraulic Hose Assembly	15 1 1	92-2407	Hose - Hydraulic	13 14 1
76-2540	Hose - Hydraulic	13 18 1	92-2407	Hydraulic Hose Assembly	15 28 1
76-2540	Hose Assembly - Hyd.	16 43 1	92-2408	Hose - Hydraulic	13 19 1
76-2550	Hose - Hydraulic	13 17 1	92-2408	Hose - Hydraulic	14 23 1
76-2550	Hose Assembly	16 49 1	92-2408	Hose - Hydraulic	16 39 1
77-0480	Screw - Traction Stop	2 45 1	92-3162	Bushing - Flange	4 4 4
80-3940	Clip - Rosebud	6 50 1	92-3165	Steering Shaft & Gear	4 5 1
80-4110	Control - Throttle	9 23 1	92-3180	Panel	6 42 1
80-4120	Control - Choke	9 22 1	92-3191	Diode - Circuit Board	10 4 1
80-4240	Footrest R.H.	1 14 1	92-3194	Switch - Clutch	9 20 1
82-4640	Battery - 12 Volt	14 7 1	92-3195	Knob	9 26 1
83-7260	Cone - Relief Valve	17 18 2	92-4426	Panel - Instrument	6 10 1
83-7340	Fork - Caster	5 6 1	92-7905	Lift Switch Assembly	24 4 1
83-7820	Shaft - Drive	23 20 1	92-7905	Neutral Switch Assembly	19 5 1
83-7900	Belt Tensioner Assembly	29 11 2	92-7906	Switch - Lift	24 49 1
83-7900	Belt Tensioner Assembly	28 24 2	92-7906	Switch - Neutral	19 34 1
83-7910	Rod	30 8 1	92-7940	Housing - Charge Pump	17 21 1
83-7930	Yoke	30 3 1	92-7949	Muffler	11 26 1
83-8860	Shield - Front R.H.	2 35 1	92-8776	Plug Assembly	18 52 2
83-9130	Keeper - Cable	24 48 1	92-8777	Seal - O-Ring	17 51 2
83-9250	Lever - Brake	20 36 2	92-9023	Hydraulic Pump Assembly	17 8 1
83-9270	Pivot - Brake L.H.	20 40 1	92-9023	Pump Assembly	16 5 1
83-9310	Pivot - Brake R.H.	20 * 1	93-4410	Fuse - 25 Amp. Slo-Blo	9 27 1
83-9330	Shaft - Brake	20 41 1	93-4423	Wire Harness Assembly	10 5 1
83-9340	Shield - Grass	20 13 2	93-4424	Decal - Instrument Panel	9 12 1
83-9350	Rod - Parking Brake	20 1 1	93-6668	Decal - Battery (Europe)	14 35 1
83-9550	Decal - Warning	6 44 1	93-6696	Decal - Warning (Europe)	28 9 2
83-9690	Spring - Compression	23 9 1	93-6696	Decal - Warning (Europe)	29 24 1
83-9730	Step - Foot	6 18 1	93-7198	Cap-Fuel	8 11 1
83-9800	Shield - Front Grass L.H.	2 33 1	93-7252	Decal - C.E. (Europe)	2 * 1
83-9810	Bushing - Flange	23 10 1	93-7267	Decal - Brake (Europe)	1 28 1
84-1650	Decal - Brake	1 28 1	93-7268	Decal - Instrument Panel	9 12 1
84-1830	Cap - Battery Vent	14 34 6	93-7271	Decal - Warning (Europe)	6 44 1
84-1840	Grille - Muffler	11 37 1	93-7276	Decal - Danger (Europe)	14 27 1
84-1990	Rod - Adjusting	20 32 2	93-7278	Decal - Service (Europe)	6 34 1
84-2000	Bracket - Brake	20 29 2	93-7724	Shield - Footrest, RH	3 2 1

*Not Illustrated

TORO PART NUMBER INDEX (Cont.)

3317-264

Part No.	Description	Pg. No.	Ref. No.	Qty.	Part No.	Description	Pg. No.	Ref. No.	Qty.
93-7725	Shield - Footrest, LH	3	7	1	251-259	Bearing - Ball	19	32	1
93-7726	Hook (Europe)	9	36	1	251-291	Bearing - Pulley	12	8	2
93-8071	Decal - Hot (Europe)	14	26	1	251-292	Bearing - Field	12	2	1
93-8071	Decal - Hot (Europe)	11	47	1	251-321	Bearing - Wheel	5	9	2
217-60	Rim	20	21	2	251-337	Bearing	23	29	2
218-461	Nut	9	10	1	252-82	Bearing - Needle	17	9	2
218-461	Nut - Jam	6	22	2	256-1	Bushing - Sleeve	24	23	3
218-489	Fuse Holder Assembly	9	14	2	256-2	Bushing - Sleeve	24	44	1
218-535	Nut	9	18	1	256-27	Bushing - Sleeve	4	6	2
218-536	Washer - Lock	9	17	1	256-115	Washer - Thrust	28	12	2
218-562	Lens	9	5	1	256-115	Washer - Thrust	29	25	1
219-18	Bulb - Light (GE #1893)	9	{	1	256-173	Bushing - Sleeve	30	11	1
2112-9	Clamp - Muffler	11	27	1	256-245	Bushing - Flange	4	18	2
231-122	Tire	5	13	1	256-247	Bushing - Flange	4	1	2
231-127	Tire	20	20	2	256-287	Bushing - Flange	4	2	2
232-27	Valve - Stem	20	24	2	256-321	Bushing - Flange	4	20	4
232-47	Tube - Inner	5	*	1	2710-16	Link - Connecting	26	5	1
232-47	Valve - Stem	5	12	1	282-2	Clevis	20	34	2
233-17	Knob	9	34	1	282-4	Clevis	29	5	1
233-37	Knob	26	1	1	282-4	Clevis	24	31	4
237-7	Seal - O-Ring	6	24	1	283-1	Pin - Clevis	29	20	1
237-21	Seal - O-Ring	26	13	2	283-1	Pin - Clevis	20	37	2
237-21	Seal - O-Ring	21	47	3	283-2	Pin - Yoke	16	52	1
237-22	O-Ring	17	2	1	283-6	Pin - Clevis	29	6	1
237-22	Seal - O-Ring	15	6	5	283-6	Pin - Clevis	24	14	4
237-22	Seal - O-Ring	26	8	2	283-40	Pin - Clevis	28	3	2
237-22	Seal - O-Ring	24	40	2	283-40	Pin - Clevis	29	14	2
237-30	O-Ring	16	2	12	283-42	Pin - Clevis	24	9	1
237-30	O-Ring	16	45	3	283-55	Pin - Clevis	30	5	1
237-30	Seal - O-Ring	15	2	8	283-75	Pin - Clevis	28	20	4
237-30	Seal - O-Ring	20	7	4	283-75	Pin - Clevis	29	32	2
237-30	Seal - O-Ring	6	32	1	283-78	Pin - Clevis	24	36	1
237-37	Bumper - Rubber	6	17	2	283-79	Pin - Clevis	24	29	1
237-42	O-Ring	27	2	2	285-17	Plug - Pipe	17	1	6
237-42	Seal - O-Ring	24	38	2	302-5	Fitting - Grease	4	3	4
237-71	O-Ring	14	33	1	302-5	Fitting - Grease	5	3	2
237-78	O-Ring	16	50	1	302-5	Fitting - Grease	30	14	1
237-78	Seal - O-Ring	26	11	2	302-5	Fitting - Grease	23	26	2
237-78	Seal - O-Ring	21	46	2	302-60	Fitting - Grease	28	16	2
237-79	O-Ring	16	4	2	302-60	Fitting - Grease	29	30	1
237-79	Seal - O-Ring	26	6	1	321-2	Screw	1	26	2
237-80	O-Ring	16	9	1	321-5	Screw - Cap Hex. Hd.	20	15	8
237-80	Seal - O-Ring	20	9	4	321-5	Screw - Cap Hex. Hd.	1	20	1
237-86	O-Ring	17	15	4	321-6	Screw - Cap Hex. Hd.	19	30	2
237-88	Grommet	7	51	1	321-11	Screw - Cap Hex. Hd.	6	11	2
237-95	O-Ring	17	27	1	321-11	Screw - Cap Hex. Hd.	15	13	2
237-117	O-Ring	16	41	2	321-13	Screw - Cap Hex. Hd.	16	21	3
237-125	Grommet	8	2	2	321-13	Screw - Cap Hex. Hd.	11	1	3
237-150	Seal - O-Ring	15	5	2	321-23	Screw - Cap Hex. Hd.	26	19	3
241-129	Rim	5	11	1	321-39	Screw - Cap Hex. Hd.	9	6	4
241-130	Spacer - Bearing	5	10	1	321-43	Screw - Hex. Flange Hd.	24	10	1
242-50	Nut - Lug	20	22	8	322-3	Capscrew - Hex. Hd.	8	17	4
2411-52	Bear - Rod End R.H.	19	12	1	322-3	Screw - Cap Hex. Hd.	14	1	2
2411-53	Bearing - Rod End L.H.	19	1	1	322-3	Screw - Cap Hex. Hd.	1	25	31
2412-34	Clamp - Hose	16	10	5	322-3	Screw - Cap Hex. Hd.	11	52	1
2412-34	Clamp - Hose	14	24	1	322-3	Screw - Hex. Hd. Cap	6	1	9
2412-36	Clamp - Hose	8	4	6	322-4	Screw - Cap Hex. Hd.	28	10	2
2412-41	Clamp - R	11	38	1	322-4	Screw - Cap Hex. Hd.	29	23	1
2412-71	Clamp - R	6	37	1	322-4	Screw - Cap Hex. Hd.	17	24	4
2412-81	Clamp - R	15	25	2	322-4	Screw - Hex. Washer Hd.	20	4	2
2412-92	Clamp - Hose	11	10	2	322-7	Capscrew - Hex. Nd.	19	10	2
2412-133	Clamp - R	6	46	2	322-12	Screw - Cap Hex. Hd.	4	11	1
251-8	Bearing - Ball	17	35	1	322-17	Capscrew - Hex. Hd.	19	24	1
251-77	Collar - Locking	23	23	2	322-17	Screw - Cap Hex. Hd.	20	2	1

*Not Illustrated

TORO PART NUMBER INDEX (Cont.)

Part No.	Description	Pg. No.	Ref. No.	Qty.	Part No.	Description	Pg. No.	Ref. No.	Qty.
322-17	Screw - Cap Hex. Hd.	23	13	6	3253-3	Washer - Lock	16	12	3
322-26	Screw - Cap Hex. Hd.	29	36	1	3253-3	Washer - Lock	20	14	8
322-43	Screw - Cap Hex. Hd.	14	20	4	3253-3	Washer - Lock	1	21	3
322-43	Screw - Cap Hex. Hd.	6	23	1	3253-4	Washer - Lock	20	3	2
322-45	Screw - Hex. Hd. Cap	6	13	1	3253-4	Washer - Lock	28	11	2
322-46	Screw - Cap Hex. Hd.	11	33	2	3253-4	Washer - Lock	14	15	2
323-6	Screw - Cap Hex. Hd.	24	2	2	3253-4	Washer - Lock	8	16	4
323-7	Screw - Cap Hex. Hd.	29	8	1	3253-4	Washer - Lock	29	22	2
323-7	Screw - Cap Hex. Hd.	28	28	2	3253-4	Washer - Lock	11	28	2
323-8	Screw - Cap Hex. Hd.	11	42	4	3253-6	Washer - Lock	11	49	1
323-9	Capscrew - Hex. Hd.	8	19	4	3253-21	Washer - Lock	14	18	2
323-11	Screw - Cap Hex. Hd.	17	46	4	3253-21	Washer - Lock	8	18	4
323-13	Screw - Cap Hex. Hd.	24	46	1	3253-27	Washer - Lock	11	23	1
323-15	Screw - Cap Hex. Hd.	23	5	2	3254-1	Washer - Lock	14	13	2
323-23	Screw - Cap Hex. Hd.	24	20	2	3254-5	Washer - Lock	9	11	1
324-7	Screw - Cap Hex. Hd.	11	48	1	3254-9	Washer - Lock	19	20	2
325-4	Screw - Cap Hex. Hd.	23	19	4	3254-9	Washer - Lock Internal	24	5	2
325-6	Screw - Cap Hex. Hd.	5	1	1	3255-2	Washer - Lock	5	20	1
325-7	Screw - Cap Hex Hd.	16	14	2	3255-7	Washer - Lock	11	4	1
325-11	Screw - Cap Hex. Hd.	20	28	8	3255-7	Washer - Lock	19	22	3
325-18	Screw - Cap Hex Hd.	16	23	1	3255-8	Screw - Hex. Flange Hd.	6	33	4
3210-7	Capscrew - Hex. Hd.	19	18	1	3255-8	Washer - Lock E.T.L.W.	7	58	1
3213-9	Capscrew - Hex. Hd.	11	24	1	3256-1	Washer - Flat	14	5	2
3217-6	Nut - Hex.	14	3	2	3256-1	Washer - Flat	9	7	4
3217-6	Nut - Hex.	11	29	2	3256-2	Washer - Flat (Europe)	9	29	1
3217-7	Nut - Hex.	2	39	2	3256-2	Washer - Flat (Europe)	9	38	A/R
3217-29	Nut-Lock	19	21	2	3256-4	Washer - Flat	24	25	4
3218-1	Nut - Hex.	11	44	1	3256-6	Washer - Flat	28	15	2
3218-5	Nut - Hex. Jam	9	32	1	3256-6	Washer - Flat	29	27	1
3218-6	Nut - Jam	30	9	1	3256-16	Washer - Flat	20	12	8
3218-13	Nut-Lock	14	16	2	3256-21	Washer - Flat	1	7	2
3218-19	Nut - Hex.	9	8	2	3256-22	Washer - Flat	1	1	8
3219-14	Nut - Hex.	14	14	2	3256-22	Washer - Flat	15	9	2
3220-2	Nut - Jam	20	33	2	3256-22	Washer - Flat	26	18	9
3220-2	Nut - Jam R.H.	19	16	1	3256-23	Washer - Flat	6	4	9
3220-3	Nut - Jam	4	12	2	3256-23	Washer - Flat	23	14	6
3220-3	Nut - Jam	5	15	2	3256-23	Washer - Flat	8	15	4
3220-5	Nut - Jam	4	14	1	3256-23	Washer - Flat	1	16	1
3220-12	Nut - Jam	5	19	1	3256-23	Washer - Flat	24	16	1
3220-20	Nut - Jam L.H.	19	2	1	3256-24	Washer	26	4	1
3229-1	Bolt - Carriage	28	1	2	3256-24	Washer	17	50	1
3229-1	Bolt - Carriage	1	10	2	3256-24	Washer - Flat	23	8	1
3229-22	Bolt - Carriage	2	43	1	3256-24	Washer - Flat	14	11	2
3229-22	Bolt - Carriage	7	54	2	3256-24	Washer - Flat	24	18	4
3230-15	Bolt - Carriage	6	9	2	3256-25	Washer - Flat	11	50	1
3234-4	Screw - Cap Hex. Hd.	11	3	3	3256-26	Washer - Flat	4	21	2
3234-4	Screw - Cap Hex. Hd.	11	14	1	3256-26	Washer - Flat	9	35	1
3234-4	Screw - Hex Washer Hd.	16	11	2	3256-28	Washer - Flat	5	16	1
3234-13	Screw - Hex. Flange Hd.	6	3	6	3256-35	Washer - Flat (Europe)	9	37	1
3234-14	Screw - Hex. Hd. Cap	6	5	2	3256-45	Washer - Flat	29	10	4
3234-17	Screw - Cap Hex. Hd.	1	15	6	3256-45	Washer - Flat	28	19	4
3234-17	Screw - Hex. Flange Hd.	3	6	1	3256-53	Washer - Flat	24	3	2
3234-17	Screw - Hex. Flange Hd.	6	27	2	3256-53	Washer - Flat	19	33	2
3234-17	Screw - Cap Hex. Hd.	1	2	10	3256-54	Washer - Flat	30	4	1
3234-32	Screw - Cap Hex. Hd.	29	28	1	3256-56	Washer - Flat	3	5	4
3234-32	Screw - Hex. Flange Hd.	28	14	2	3256-57	Washer - Flat	29	38	1
3242-4	Screw - Set	23	21	8	3256-70	Washer - Flat	6	12	7
3245-9	Screw - Set	16	18	1	3256-70	Washer - Flat	14	21	4
3245-35	Screw - Set	23	24	4	3256-70	Washer - Flat	11	32	2
3249-3	Screw - Rd. Hd. Machine	19	6	2	3256-74	Washer - Flat	19	13	8
3249-5	Screw - Round Hd.	24	6	2	3257-32	Key - Woodruff	17	7	1
3250-32	Screw - Phillips Pan Hd.	3	1	4	3257-32	Key - Woodruff	16	20	1
3250-50	Screw - Pan Hd.	2	36	2	3272-4	Pin - Cotter	24	13	1
3253-3	Washer - Lock	11	2	3	3272-4	Pin - Cotter	24	27	1

*Not Illustrated

TORO PART NUMBER INDEX (Cont.)

3317-264

Part No.	Description	Pg. No.	Ref. No.	Qty.	Part No.	Description	Pg. No.	Ref. No.	Qty.
3272-4	Pin - Cotter	6	36	2	32108-101	Screw - Flathead	14	32	1
3272-6	Pin - Cotter	29	19	1	32120-11	Ring - Retaining	17	36	1
3272-6	Pin - Cotter	20	31	4	32120-15	Ring - Retaining	17	34	1
3272-6	Pin - Cotter	24	43	1	32121-6	Pin - Roll	19	17	1
3272-6	Pin - Cotter	16	53	1	32121-6	Pin - Roll	6	43	1
3272-7	Pin - Cotter	20	43	1	32121-9	Pin - Roll	30	13	1
3272-10	Pin - Cotter	28	22	4	32121-10	Pin - Roll	4	9	1
3272-10	Pin - Cotter	29	33	2	32121-23	Pin - Roll	30	1	1
3272-11	Pin - Cotter	29	4	1	32121-24	Pin - Roll	19	3	1
3272-11	Pin - Cotter	24	32	5	32121-34	Pin - Roll	16	35	1
3272-13	Pin - Cotter	29	13	2	32121-79	Pin - Roll	20	39	2
3272-13	Pin - Cotter	28	27	2	32121-91	Pin - Coiled Spring	17	38	3
3272-15	Key - Woodruff	22	11	1	32121-124	Pin - Roll	24	28	1
3290-196	Nut - Retainer	6	38	3	32122-14	Screw - Truss Hd.	6	49	2
3290-199	Nut - Speed	14	31	1	32122-35	Screw - Phillips Truss Hd.	9	28	1
3290-199	Nut - Speed	6	40	3	32128-20	Nut - Flange	2	46	3
3290-224	Washer - Lock Pyramidal	2	40	2	32128-20	Nut - Lock	21	48	2
3290-378	Tie - Cable	11	17	1	32128-25	Nut - Flange Lock	23	15	6
3290-378	Tie - Cable	19	35	1	32128-25	Nut - Flange Lock	6	15	17
3290-379	Cable Tie	16	47	4	32128-25	Nut - Flange Lock	1	17	5
3290-379	Tie - Cable	8	1	2	32128-25	Nut - Lock	11	35	2
3290-379	Tie - Cable	15	19	2	32128-25	Nut - Lock	14	22	2
3290-410	Tie - Push Mount	11	39	1	32128-32	Nut - Hex. Flange	15	8	2
3290-470	Screw - Machine	8	12	2	32128-33	Nut - Flange Lock	28	4	2
3296-4	Nut - Lock	24	15	1	32128-33	Nut - Flange Lock	7	55	2
3296-6	Nut - Lock	12	9	3	32128-43	Nut - Flange Lock	6	35	4
3296-6	Nut - Lock	16	22	1	32128-44	Nut - Flange	6	8	2
3296-16	Nut - Lock	1	3	5	32128-44	Nut - Flange Lock	9	39	2
3296-16	Nut - Lock	26	15	3	32144-18	Screw - Cap Hex. Hd.	9	24	2
3296-16	Nut - Lock	19	25	2	32144-22	Screw - Hex. Hd. Self-Tap	1	18	4
3296-23	Nut - Lock	23	12	4	32144-69	Screw - Self Tapping	15	27	2
3296-23	Nut - Lock	16	38	3	32148-8	Insert - Threaded	7	57	1
3296-23	Nut - Lock	20	42	8	32149-2	Nut - Hex.	14	30	2
3296-28	Nut - Lock	4	22	2	32151-46	Ring - Retaining	17	13	2
3296-29	Nut - Flange Lock	4	7	1	32153-3	Nut - Lock	19	15	2
3296-29	Nut - Lock	6	6	2	3333-975	Tie - Cable	11	12	1
3296-29	Nut - Lock	19	19	1	340-1	Fitting - Straight	15	14	1
3296-39	Nut - Flange Lock	24	26	5	340-77	Fitting - Hydraulic 90°	24	47	1
3296-39	Nut - Lock	23	1	2	340-87	Fitting - Hydraulic 45°	24	39	1
3296-39	Nut - Lock	26	3	1	340-88	Fitting - Hydraulic Straight	26	12	1
3296-39	Nut - Lock	29	15	1	340-89	Fitting - Hydraulic 45°	20	8	2
3296-39	Nut - Lock	28	31	2	340-92	Fitting	16	51	1
3296-39	Nut - Lock	11	40	4	340-92	Fitting - Straight	15	4	1
3296-42	Nut - Lock	3	4	4	340-96	Fitting - 45° Elbow	15	7	2
3296-42	Nut - Lock	20	11	8	340-97	Fitting - Hydraulic 90°	26	14	1
3296-42	Nut - Lock	9	21	4	340-98	Fitting - 90° Elbow	16	3	1
3296-42	Nut - Lock	7	56	2	340-99	Fitting - Hydraulic 90°	26	7	2
3296-51	Nut - Lock	5	17	1	340-99	Fitting - Hydraulic 90°	15	16	1
3296-56	Nut - Lock	11	7	2	340-102	Fitting - Hydraulic Tee	16	42	1
3296-56	Nut - Lock	24	50	1	340-102	Fitting - Tee	16	32	2
3296-59	Nut - Lock	23	7	1	340-103	Fitting - Hydraulic 45°	21	45	1
3296-59	Nut - Lock	29	9	2	340-104	Fitting - Male/Female Tee	15	21	1
3296-59	Nut - Lock	28	18	2	340-109	Fitting - Male Tee	15	3	1
3298-8	Screw - Set	9	25	1	340-140	Fitting - Hydraulic Tee	21	*	1
32103-12	Nut - Wing	14	4	2	340-140	Fitting - Tee	16	46	1
32104-6	Screw - Cap Hex. Hd.	28	32	2	340-168	Fitting - 90° Male Elbow	15	31	2
32104-6	Screw - Cap Hex. Hd.	29	35	1	353-954	Fitting - 90° Elbow	16	34	1
32104-77	Screw - Hex. Hd. Self-Tap	1	8	2					
32104-82	Screw - Hex. Hd. Self-Tap	2	34	4					

*Not Illustrated

PRODUCT CHANGES

In an effort to make improvements available to TORO owners as quickly as possible, minor changes are incorporated into Toro's products from time to time that do not become immediately shown in the Parts Catalog. If such a change has been made in your unit, which is not reflected in your manual, see your TORO Distributor or his Authorized TORO Service Dealer for information and part numbers.

IDENTIFICATION AND ORDERING

MODEL AND SERIAL NUMBERS

The Reelmaster 216 has two identification numbers; a model number and a serial number. The two numbers are stamped on a plate which is located on the main frame under the seat. In any correspondence concerning the Reelmaster 216, supply model and serial numbers to assure that correct information and replacement parts are obtained.

To order replacement parts from an Authorized TORO Service Dealer, supply the following information:

1. Model and serial number of the Reelmaster 216.
2. Part number, description, and the quantity of part(s) desired.

NOTE: Do not order by reference number if a parts catalog is being used; use the PART NUMBER.

TABLE OF CONTENTS

Description	Page	Description	Page
Hood Assembly	1-2	Traction Controls Assembly	19
Shield Assembly	3	Front Wheel Assembly	20-21
Frame Assembly	4	Hydraulic Drive Motor No. 66-5291	22
Rear Wheel Assembly	5	Jackshaft Assembly	23
Seat Support Assembly	6-7	Cutting Unit Lift Assembly	24
Fuel Tank Assembly	8	Hydraulic Cylinder No. 76-0020	25
Instrument Panel Assembly	9	Cutting Unit Lift Valve Installation Assembly	26
Electrical Schematic	10	Control Valve No. 43-1950	27
Engine & Clutch Assembly	11	Front Cutting Unit Lift Arm Assembly	28
Electric Clutch Assembly No. 70-8020	12	Rear Cutting Unit Lift Arm Assembly	29
Hydraulic Schematic	13	Belt Tensioner Assembly No. 83-7900	30
Hydraulic Tank & Battery Assembly	14	Engine Kohler	
Hydraulic Oil Cooler Assembly	15	Model No. M1605 Spec. No. 711563	31-36
Hydraulic Drive Assembly	16	Special Tools	37
Hydraulic Pump Assembly No. 92-9023	17-18	TORO Part Number Index	38-43

European parts kit number 93-7720 contains all of the individual parts on the preceding pages designated as (Europe).