



Count on it.

Parts Catalog

**52in Side Discharge Mower
Groundsmaster® 200, 3320 and 3280-D
Series Traction Unit**

Model No. 30555—Serial No. 310000001 and Up

Ordering Replacement Parts

To order replacement parts, please supply the part number, the quantity, and the description of each part desired.

Understanding Reference Numbers

Each identified part in an illustration has a reference number. The reference number for a part also appears in the parts list, along with other information about the part.

This catalog uses two special reference number formats, one to indicate parts in a service assembly and another to indicate the quantity of a given part in an illustration.

Service Assembly Reference Numbers

Parts in service assemblies have reference numbers in the form a:b. The a represents the reference number of the entire service assembly and the b represents a sequential number unique to each part within the service assembly.

For example, a wheel assembly might be identified by reference number 6, the tire by 6:1, the valve by 6:2, and the wheel by 6:3. When you order the assembly identified by reference number 6, you receive all parts identified by reference numbers 6:1, 6:2, and 6:3. However, you may also order any part individually. Reference numbers of this type appear in illustration and in parts lists.

Reference Numbers Indicating Quantity

In an illustration, if a reference number indicates more than one part, the reference number has the form nX y. The n represents the quantity of the part, the X is the multiplication symbol, and the y represents the reference number.

For example, in an illustration, the reference number 2X 37 means that two of the parts identified by reference number 37 are indicated.

List of Abbreviations

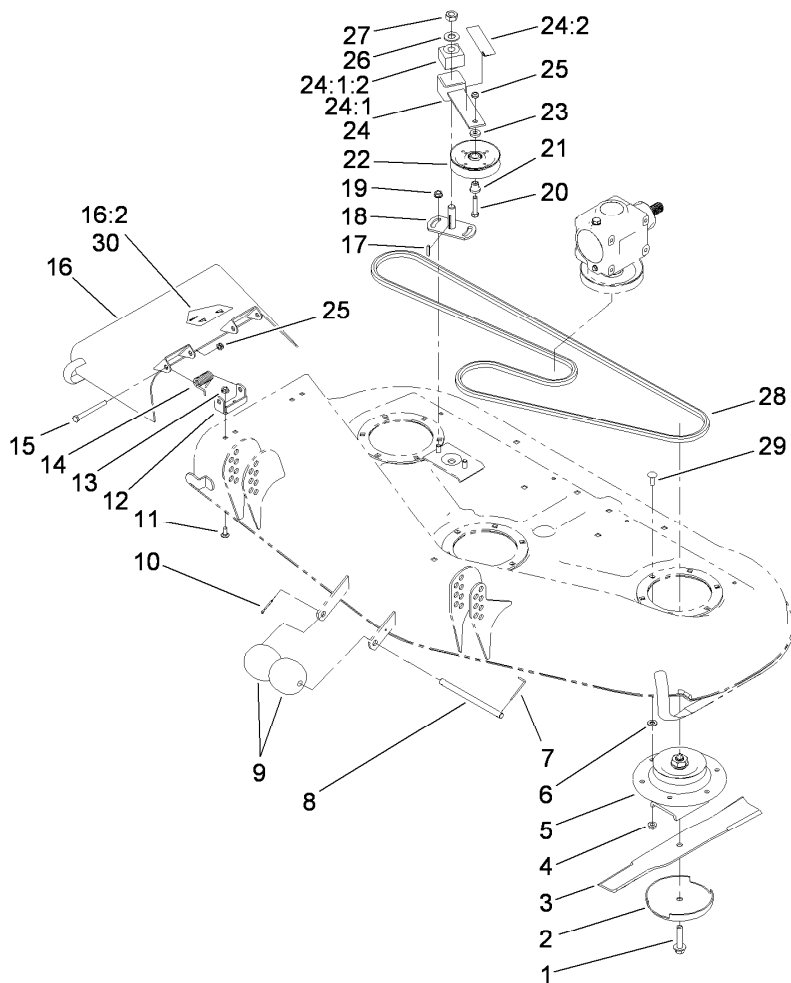
AR: as required
ASM: assembly
BBC: blade brake clutch
CARR: carriage
CCW: counter clock wise
CW: clockwise
DEG: degrees
ECM: electronic control module
EXT: external
FH: flat head
GA: gauge
HD: heavy-duty
HF: hex flange
HH: hex head
HHF: hex head flange
HHFTF: hex head flange thread forming
HJ: hex jam
HLH: hex lag head
HOC: height-of-cut

HSBH: hex socket button head
HSFH: hex socket flat head
HSH: hex socket head
HWH: hex washer head
HWHTF: hex washer head thread forming
HYD: hydraulic
LH: left hand
NI: nylon insert
NPTF: national pipe thread fine
PFH: phillips flat head
PPH: phillips pan head
PPHTF: phillips pan head thread forming
PRH: phillips round head
PTH: phillips truss head
PTO: power-take-off
RH: right hand
ROPS: roll-over protection system
RRB: rear roller brush

SFH: slotted fillister head
SHH: slotted hex head
SHWH: slotted hex washer head
SPH: slotted pan head
SQH: square head
SRH: slotted round head
STD: standard
TAP: self tapping
TTH: torx truss head

Contents

- Deck and Spindle Assembly 4
- Drive Spindle Assembly No. 27-0870 5
- Deck Assembly 6
- Cover and Gearbox Assembly 7
- Carrier Frame Assembly 8
- Tire and Bearing Assembly No. 68-8970 9
- Pivot Pin and Spacer Assembly 10
- Attachments and Accessories 11

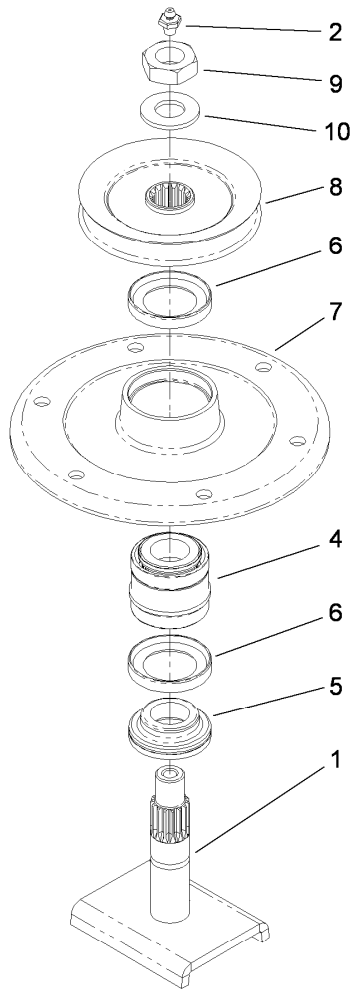


Deck and Spindle Assembly

<i>Ref.</i>	<i>Part Number</i>	<i>Qty.</i>	<i>Description</i>	<i>Ref.</i>	<i>Part Number</i>	<i>Qty.</i>	<i>Description</i>
1	92-5816	3	Bolt-Blade	16:2	106-6753	1	Decal-Danger, Ce
2	72-9361	3	Cup-Scalp, Anti	17	5-1077	1	Key-Square
3	104-1301	3	Blade-Atomic ●	18	28-9060	1	Plate-Idler
3	27-0990-03	3	Blade-18 Inch	19	3290-357	2	Nut-HHF, Whiz
3	44-5480-03	3	Blade-High Sail ●	20	3211-8	1	Screw-HH
3	56-2390-03	3	Blade-Sail, Extra High ●	21	65-5950	1	Bushing-Pulley
4	32128-21	18	Nut-HF	22	65-5940	1	Pulley-Idler
5	27-0870	3	Spindle ASM	23	7-0081	1	Washer-Flat
6	3256-24	4	Washer-Flat	24	100-6178	1	Idler Arm ASM
7	57-0690	1	Pin-Special	24:1		1	Arm-Idler ■
8	40-6400	1	Shaft-Roller	24:1:2	27-8490	1	Bushing-Rubber
9	29-4820	2	Roller	24:2	100-6578	1	Decal-Danger
10	3272-11	1	Pin-Cotter	25	3296-5	3	Nut-Lock
11	3230-23	4	Screw-CARR	26	3256-27	1	Washer-Flat
12	29-5590-01	2	Bracket-Pivot	27	3296-33	1	Nut-Lock, NI
13	32128-20	4	Nut-HF	28	27-1160	1	V-Belt
14	40-6230	2	Spring	29	3231-22	18	Screw-CARR
15	3211-15	2	Screw-HH	30	43-8480	1	Decal-Danger
16	93-8714	1	Deflector ASM				

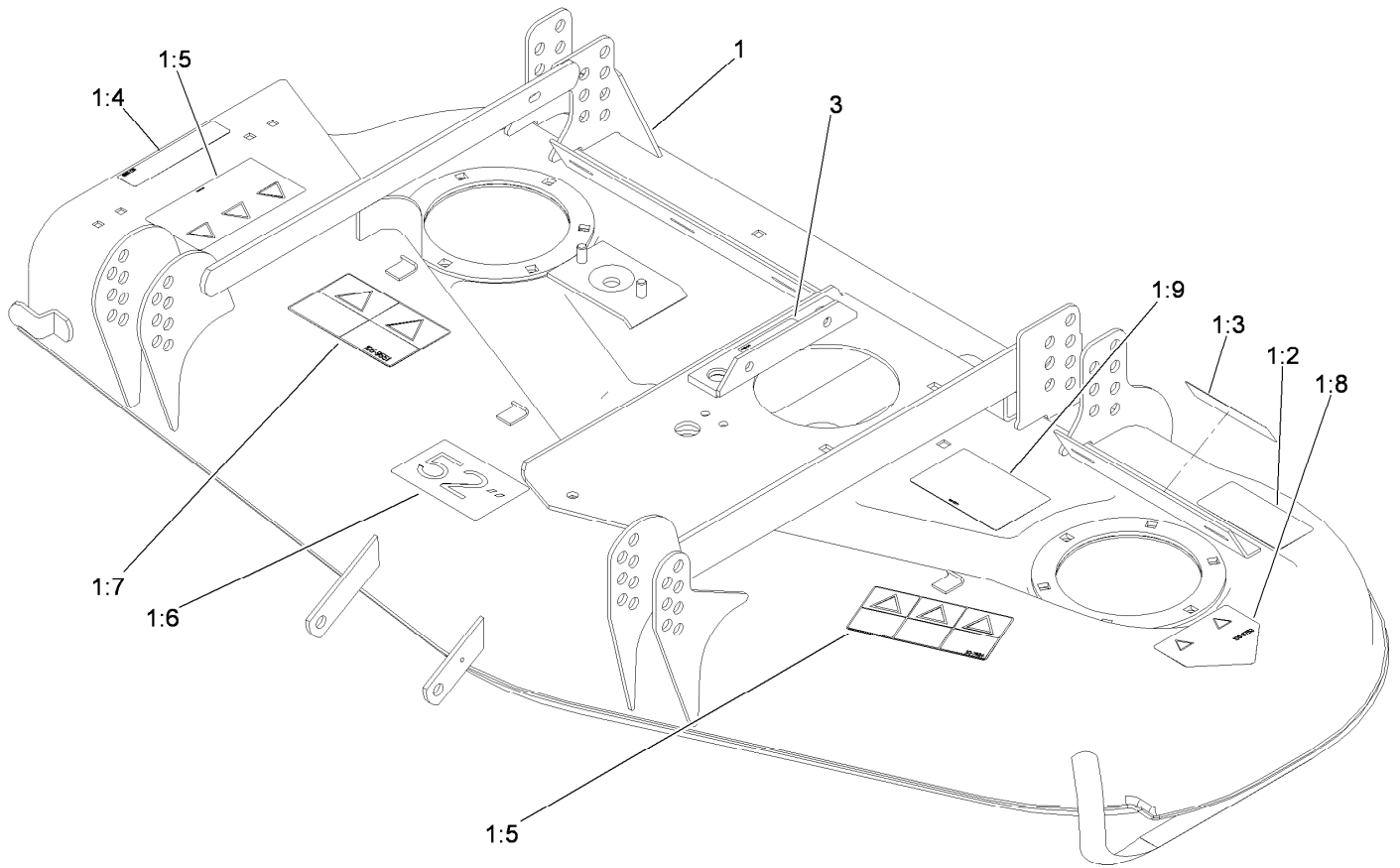
● Optional Equipment

■ Not serviced separately



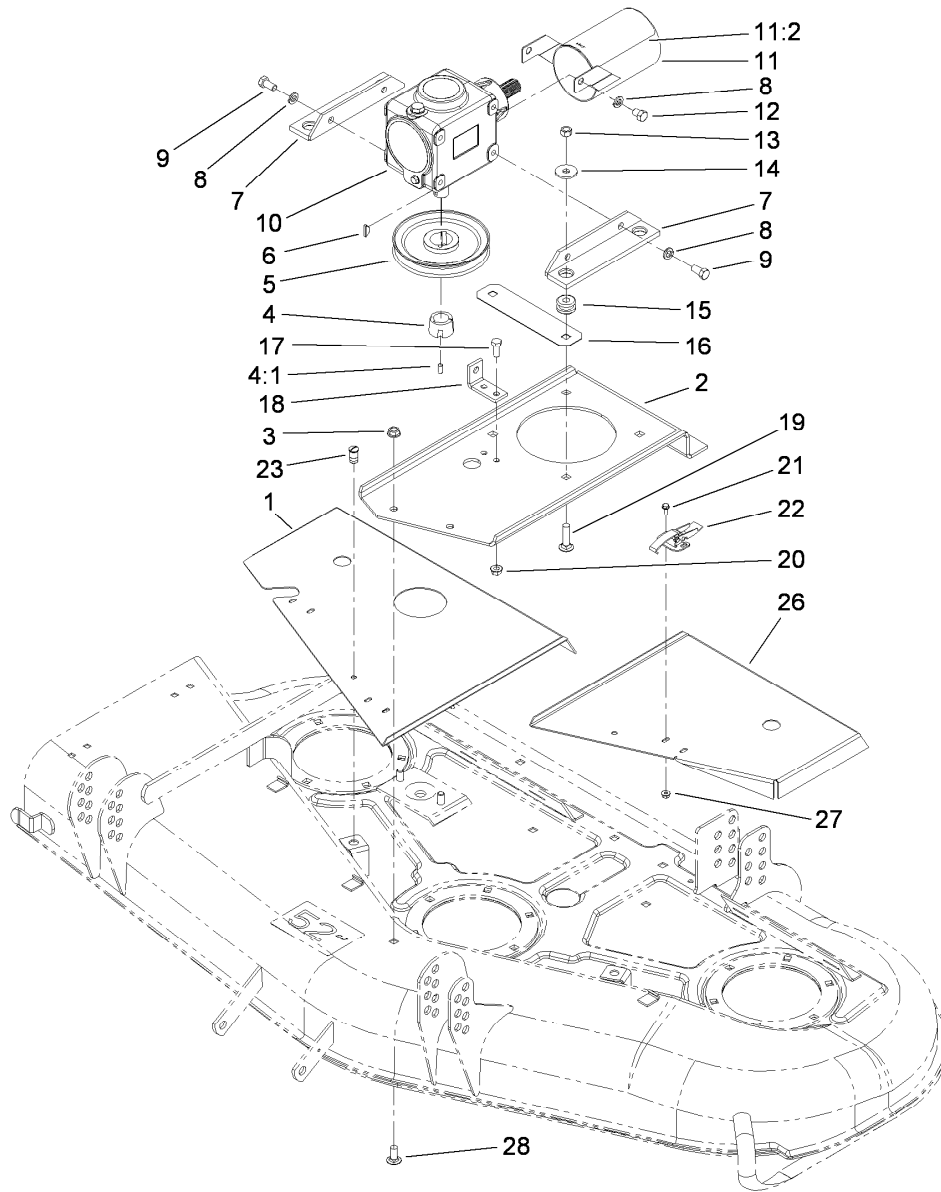
Drive Spindle Assembly No. 27-0870

<i>Ref.</i>	<i>Part Number</i>	<i>Qty.</i>	<i>Description</i>
1	27-0920-03	1	Shaft ASM
2	302-2	1	Fitting-Grease
4	46-8530	1	Bearing ASM
5	27-0950	1	Spacer
6	253-139	2	Seal-Oil
7	61-4160	1	Housing-Spindle
8	27-0970	1	Pulley And Hub ASM
9	32146-20	1	Nut-Jam
10	106-0776	1	Washer-Pinion



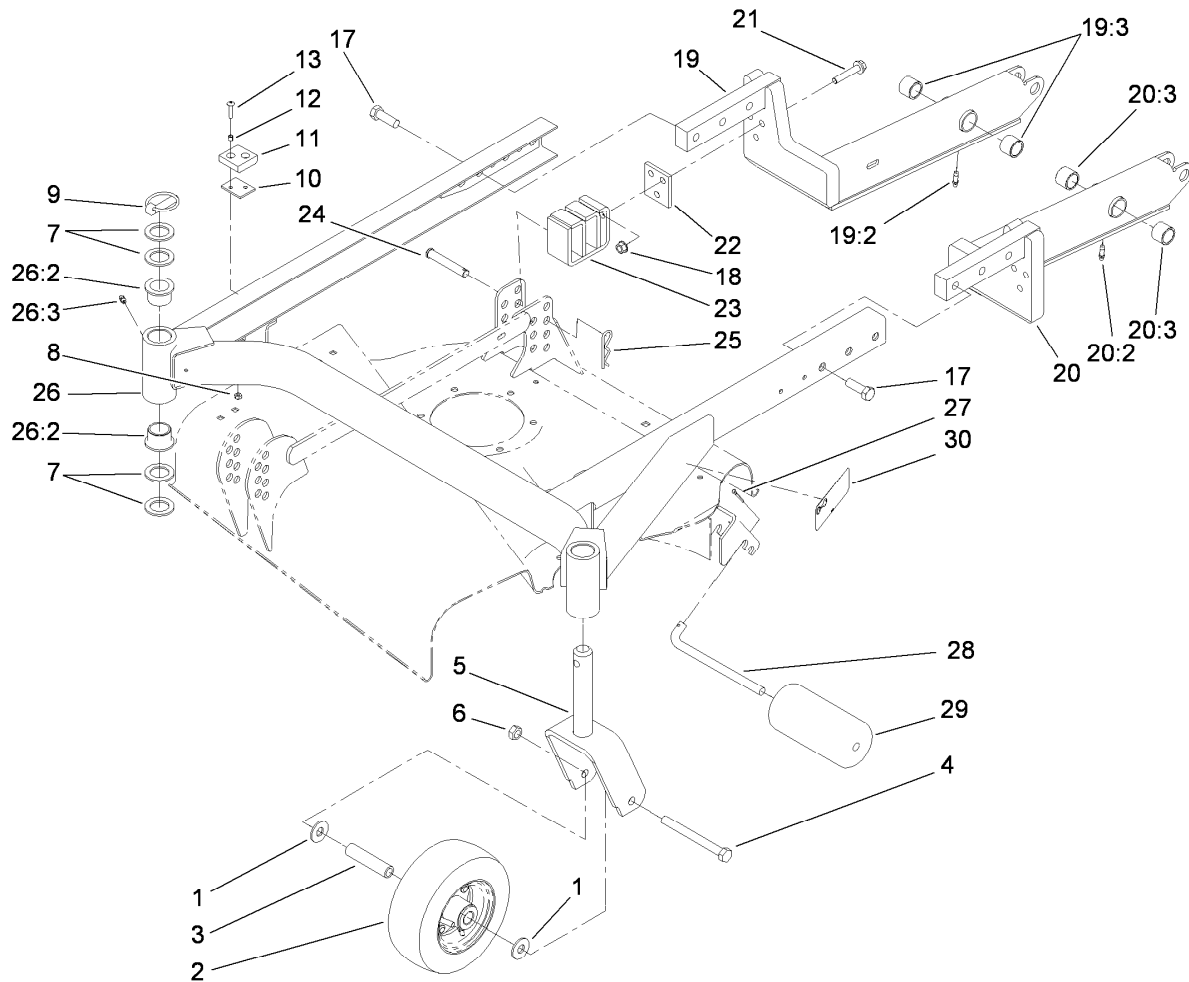
Deck Assembly

<i>Ref.</i>	<i>Part Number</i>	<i>Qty.</i>	<i>Description</i>
1	119-4761	1	Deck ASM
1:2	93-7818	1	Decal-Torque, Blade Bolt
1:3	100-6578	1	Decal-Danger
1:4	107-2916	1	Decal-Warning
1:5	107-2908	2	Decal-Danger, Combination
1:6	51-3960	1	Decal
1:7	105-9551	1	Decal-Warning
1:8	106-6753	1	Decal-Danger, Ce
1:9	99-5171	1	Decal - Belt Routing
3	93-6697	1	Decal-Lube



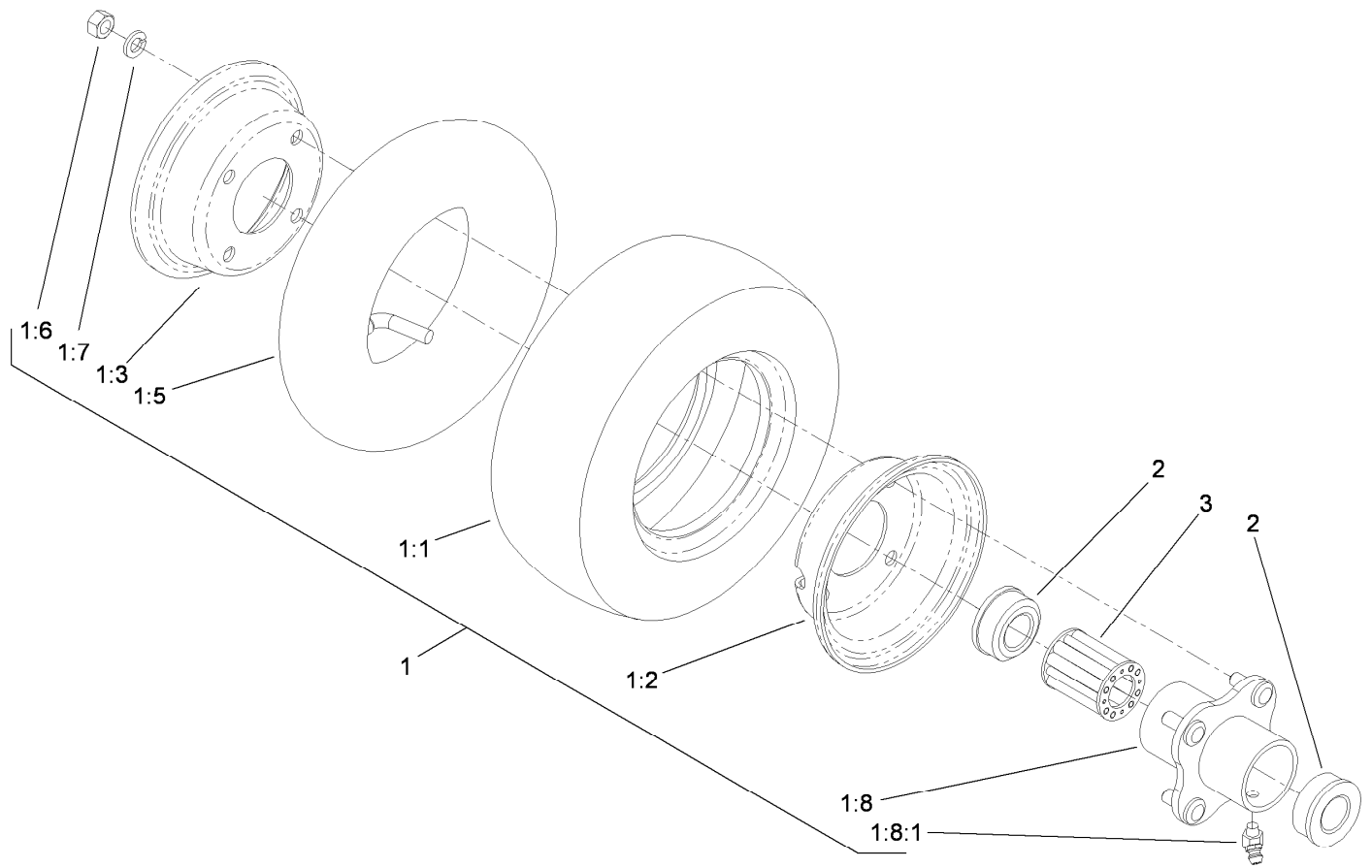
Cover and Gearbox Assembly

<i>Ref.</i>	<i>Part Number</i>	<i>Qty.</i>	<i>Description</i>	<i>Ref.</i>	<i>Part Number</i>	<i>Qty.</i>	<i>Description</i>
1	119-4763-01	1	Cover-Belt, RH	14	63-8410	4	Washer
2	72-9230-01	1	Base-Case, Gear	15	63-9750	4	Mount
3	3290-357	4	Nut-HHF, Whiz	16	68-9890-01	1	Cover-Gearbox, Front
4	27-6140	1	Bushing-Lock, Taper	17	322-4	2	Screw-HH
4:1	3245-9	2	Screw-Set	18	72-9240-01	1	Bracket-Extension
5	63-9900-03	1	Gearbox Pulley ASM	19	3231-26	4	Screw-CARR
6	3257-5	1	Key-Woodruff	20	32128-20	2	Nut-HF
7	68-8560-03	2	Bracket-Gearbox	21	3290-321	6	Screw-HWH
8	3253-21	6	Washer-Lock	22	249-21	3	Clamp-Slotted
9	323-4	4	Screw-HH	23	117-6989	2	Fractional Turn Oval Head Stud ASM
10	108-1370	1	Gearbox Replacement Kit	26	119-4762-01	1	Cover-Belt, LH
11	107-2904	1	PTO Guard ASM	27	32128-17	6	Nut-Lock, Flange
11:2	107-2915	1	Decal-Danger	28	3231-27	4	Screw-CARR
12	323-2	2	Screw-HH				
13	32153-2	4	Nut-Lock, Side				



Carrier Frame Assembly

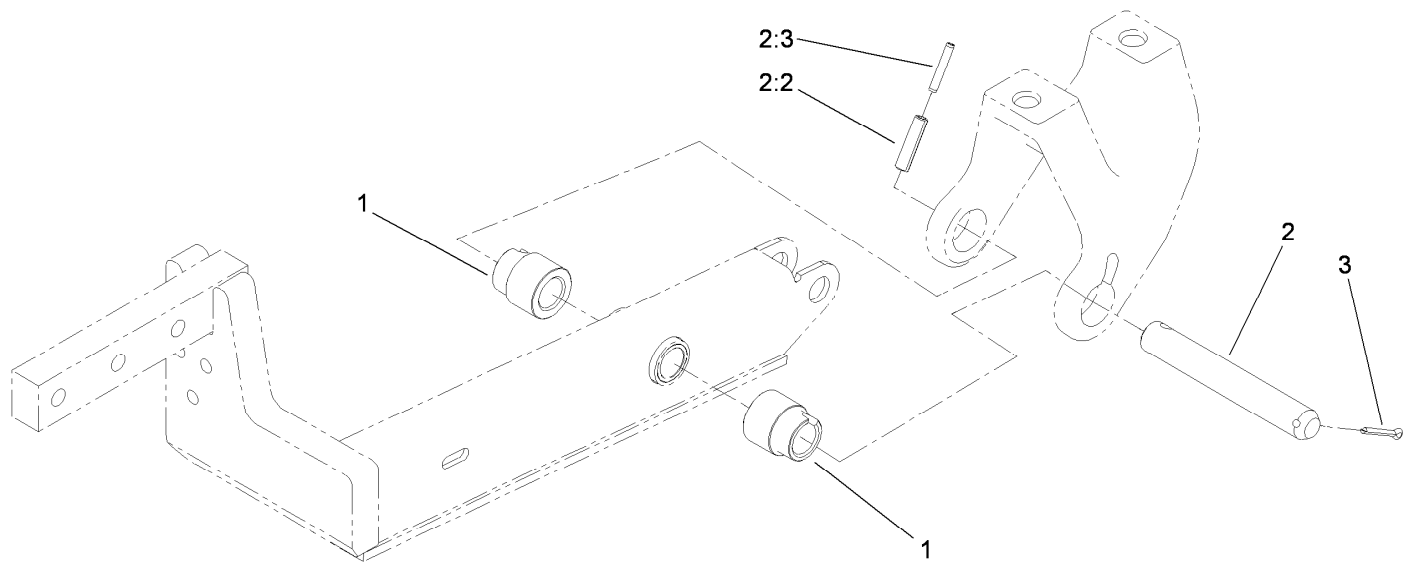
<i>Ref.</i>	<i>Part Number</i>	<i>Qty.</i>	<i>Description</i>	<i>Ref.</i>	<i>Part Number</i>	<i>Qty.</i>	<i>Description</i>
1	3256-6	4	Washer-Flat	19:3	92-5648	2	Bushing
2	68-8970	2	Tire And Bearing ASM	20	76-3090	1	LH Lift Arm ASM
3	68-8980	2	Spanner-Tire	20:2	302-62	1	Fitting-Grease
4	325-19	2	Screw-HH	20:3	92-5648	2	Bushing
5	68-8900-01	2	Front Castor Fork ASM	21	66-9302	6	Screw-HHF, Whiz
6	32153-5	2	Nut-Hex	22	83-4580-01	2	Spacer-Cradle
7	3-6781	8	Washer-Thrust	23	83-4520-01	2	Rear Cradle ASM
8	3296-2	4	Nut-Lock, NI	24	283-55	4	Pin-Clevis
9	283-71	2	Pin-Lynch	25	3290-355	4	Pin-Hair
10	42-6200	3	Shim-Cushion	26	83-4550	1	52-Inch Carrier Frame ASM
11	40-0330	2	Cushion-Rubber	26:2	94-1291	4	Bushing
12	40-9520	4	Spacer	26:3	302-5	2	Fitting-Grease
13	32122-28	4	Screw	27	3272-11	2	Pin-Cotter
17	325-32	6	Screw-HH	28	40-0340	2	Shaft-Roller, Rear
18	32128-40	6	Nut-Flange	29	36-1740	2	Roller-Deck
19	76-3080	1	RH Lift Arm ASM	30	93-7819	1	Decal-HOC
19:2	302-62	1	Fitting-Grease				



Tire and Bearing Assembly No. 68-8970

<i>Ref.</i>	<i>Part Number</i>	<i>Qty.</i>	<i>Description</i>
1		1	Pneumatic Wheel ASM ●
1:1	68-8960	1	Tire
1:2	68-8920	1	Female Wheel Half
1:3	68-8930	1	Male Wheel Half
1:5	68-8950	1	Tube-Inner (W/Valve)
1:6	3219-2	4	Nut-Hex
1:7	3253-4	4	Washer-Lock
1:8	68-8940	1	Hub-Center
1:8:1	302-11	1	Fitting-Lube, 45 DEG
2	62-5580	2	Bearing-Outside
3	62-5570	1	Bearing-Roller

● Not serviced separately



Pivot Pin and Spacer Assembly

<i>Ref.</i>	<i>Part Number</i>	<i>Qty.</i>	<i>Description</i>
1	98-7926	4	Spacer-Lift Arm
2	98-2348	2	Pivot Pin ASM
2:2	32121-49	1	Pin-Roll
2:3	32121-71	1	Pin-Spring
3	3272-17	2	Pin-Cotter

Attachments and Accessories

For 30555 52in Side Discharge Mower, Groundsmaster 200, 3320 and 3280-D Series Traction Unit

Product Name	Model/Part
Blade-Atomic	104-1301
18in Blade Service Pack	108-1477
Castor Wheel	27-1050
52in Blower Kit	30502
Blade-High Sail	44-5480-03
Blade-18in	56-2390-03
Recycler Kit	59225
Tire and Bearing Asm	68-8970
Blade and Belt Kit	95-3070
Caster Wheel Kit	95-3077
Spindle Kit	95-3078



Count on it.