



**Count on it.**

**Parts Catalog**

**Verticutter**

**Reelmaster® 5210/5410 Series Cutting Unit  
with 5in Reel**

**Model No. 03664—Serial No. 280000001 and Up**

# Ordering Replacement Parts

To order replacement parts, please supply the part number, the quantity, and the description of each part desired.

## Understanding Reference Numbers

Each identified part in an illustration has a reference number. The reference number for a part also appears in the parts list, along with other information about the part.

This catalog uses two special reference number formats, one to indicate parts in a service assembly and another to indicate the quantity of a given part in an illustration.

## Service Assembly Reference Numbers

Parts in service assemblies have reference numbers in the form a:b. The a represents the reference number of the entire service assembly and the b represents a sequential number unique to each part within the service assembly.

For example, a wheel assembly might be identified by reference number 6, the tire by 6:1, the valve by 6:2, and the wheel by 6:3. When you order the assembly identified by reference number 6, you receive all parts identified by reference numbers 6:1, 6:2, and 6:3. However, you may also order any part individually. Reference numbers of this type appear in illustration and in parts lists.

## Reference Numbers Indicating Quantity

In an illustration, if a reference number indicates more than one part, the reference number has the form nX y. The n represents the quantity of the part, the X is the multiplication symbol, and the y represents the reference number.

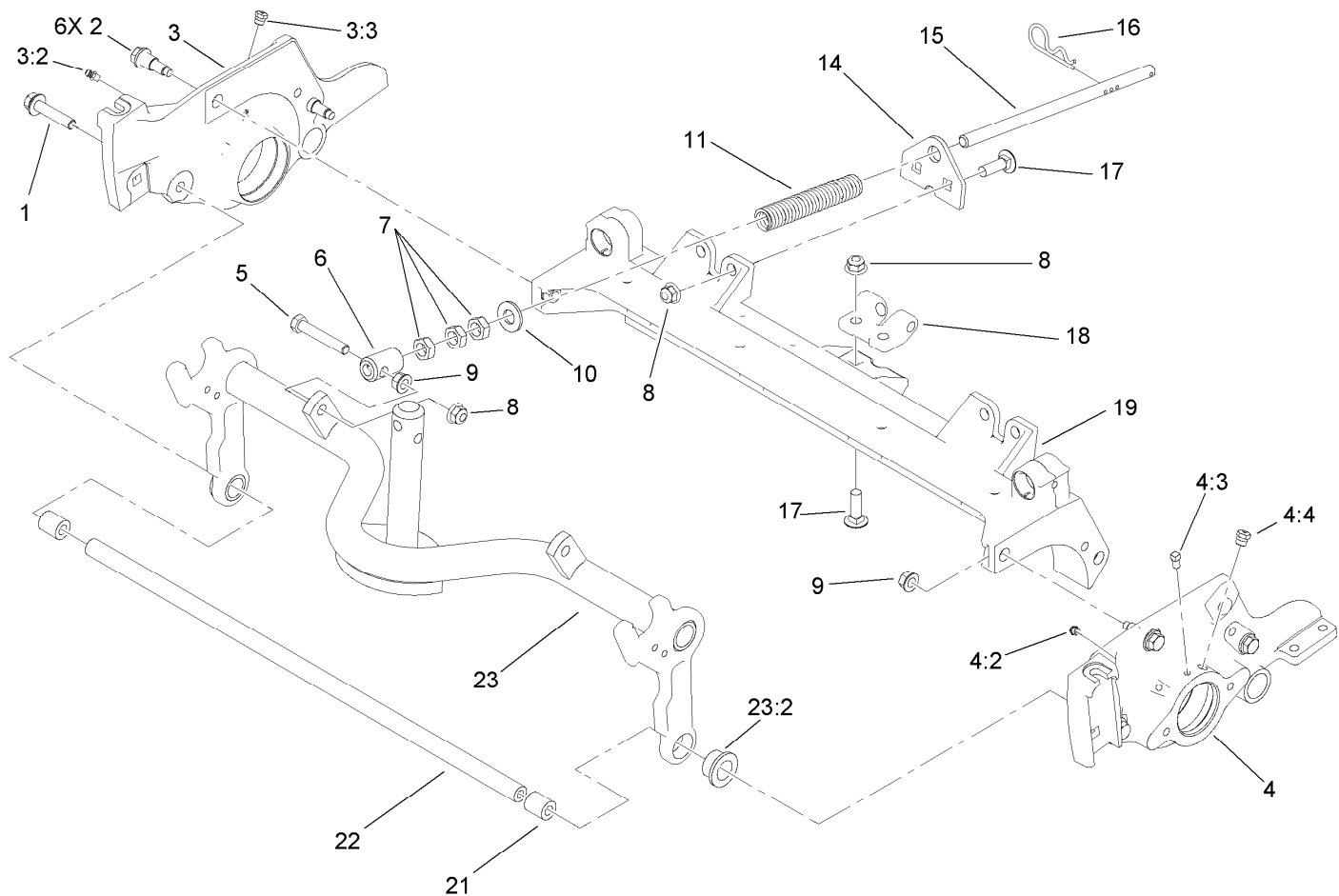
For example, in an illustration, the reference number 2X 37 means that two of the parts identified by reference number 37 are indicated.

# List of Abbreviations

<b>AR:</b> as required	<b>HLH:</b> hex lag head	<b>PTO:</b> power-take-off
<b>ASM:</b> assembly	<b>HOC:</b> height-of-cut	<b>RH:</b> right hand
<b>BBC:</b> blade brake clutch	<b>HSBH:</b> hex socket button head	<b>ROPS:</b> roll-over protection system
<b>CARR:</b> carriage	<b>HSFH:</b> hex socket flat head	<b>SFH:</b> slotted fillister head
<b>CCW:</b> counter clock wise	<b>HSH:</b> hex socket head	<b>SHH:</b> slotted hex head
<b>CW:</b> clockwise	<b>HWH:</b> hex washer head	<b>SHWH:</b> slotted hex washer head
<b>DEG:</b> degrees	<b>HWHTF:</b> hex washer head thread forming	<b>SPH:</b> slotted pan head
<b>ECM:</b> electronic control module	<b>HYD:</b> hydraulic	<b>SQH:</b> square head
<b>EXT:</b> external	<b>LH:</b> left hand	<b>SRH:</b> slotted round head
<b>FH:</b> flat head	<b>NI:</b> nylon insert	<b>STD:</b> standard
<b>GA:</b> gauge	<b>NPTF:</b> national pipe thread fine	<b>TAP:</b> self tapping
<b>HD:</b> heavy-duty	<b>PFH:</b> phillips flat head	<b>TTH:</b> torx truss head
<b>HF:</b> hex flange	<b>PPH:</b> phillips pan head	
<b>HH:</b> hex head	<b>PPHTF:</b> phillips pan head thread forming	
<b>HHF:</b> hex head flange	<b>PRH:</b> phillips round head	
<b>HHFTF:</b> hex head flange thread forming	<b>PTH:</b> phillips truss head	
<b>HJ:</b> hex jam		

# Contents

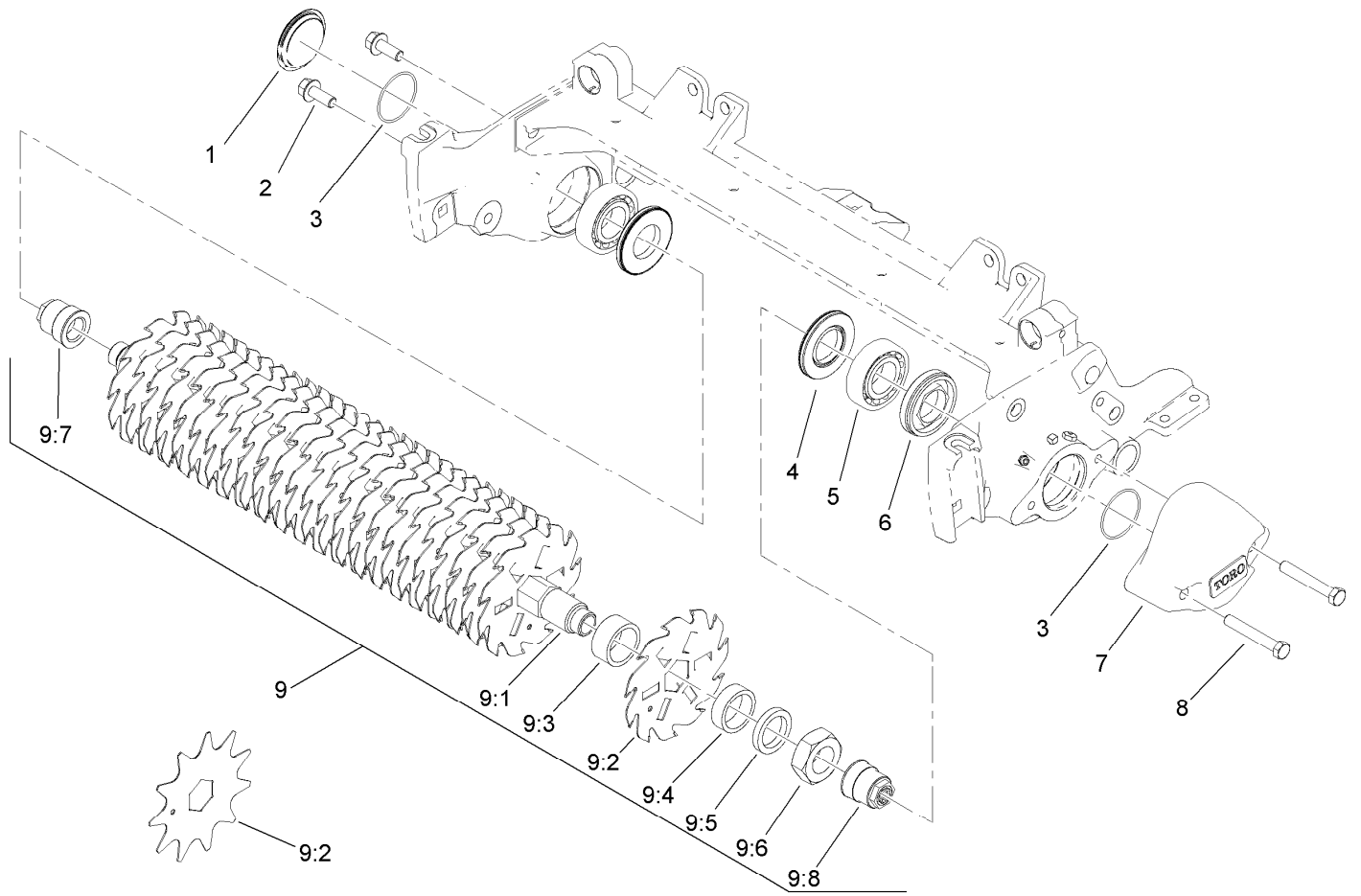
- Frame Assembly..... 4
- Verticutter Assembly ..... 5
- Roller and Scraper Assembly..... 6
- Roller Kickstand and Shield Assembly ..... 7



## Frame Assembly

<i>Ref.</i>	<i>Part Number</i>	<i>Qty.</i>	<i>Description</i>
1	3234-19	2	Screw-HHF
2	107-2979	4	Bolt-Shoulder
3	110-9629	1	RH Side Plate ASM
3:2	302-5	1	Fitting-Grease
3:3	302-39	1	Fitting-Plug
4	110-9628	1	LH Side Plate ASM
4:2	302-5	1	Fitting-Grease
4:3	106-4214	1	Setscrew-SQH
4:4	302-39	1	Fitting-Plug
5	104-3396	1	Screw-HH
6	99-8662	1	Tube-Spring
7	3218-5	3	Nut-Jam
8	104-8301	5	Nut-Flange, NI

<i>Ref.</i>	<i>Part Number</i>	<i>Qty.</i>	<i>Description</i>
9	3290-357	5	Nut-HHF, Whiz
10	87-7270	1	Washer-Thrust
11	108-4960	1	Spring-Compression
14	110-4069	1	Bracket
15	108-4959	1	Rod-Turf
16	92-2762	1	Pin-Hair
17	3231-25	4	Screw-CARR
18	110-4058	1	Bracket-Chain
19	107-2951	1	Frame
21	108-4279	2	Spacer-Frame
22	108-4284	1	Tube-Support
23	106-3937	1	Carrier Frame ASM
23:2	93-2877	2	Bushing

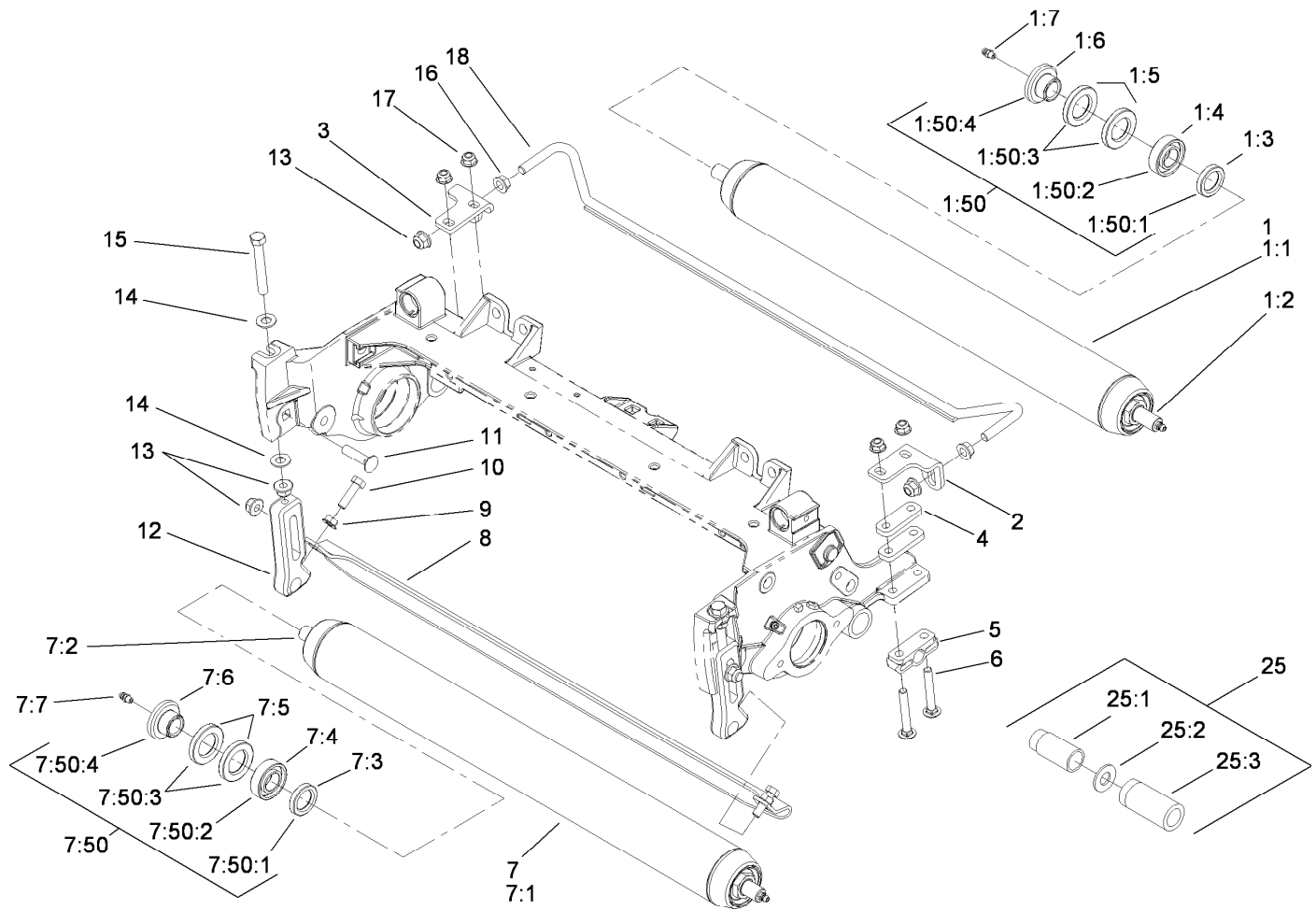


## Verticutter Assembly

Ref.	Part Number	Qty.	Description
1	2410-30	1	Cap-Plastic
2	3234-11	2	Screw-HHF
3	237-68	2	O-Ring
4	107-4028	2	Seal-Grease
5	93-2489	2	Bearing
6	107-2954	1	Nut-Adjuster, Bearing
7	108-9090-01	1	Weight-End
8	323-12	2	Screw-HH
9		1	Shaft And Blade ASM ■
9:1	108-4955	1	Shaft ASM
9:2	106-6355	25	Blade-11 Tooth (Carbide)
9:2	17-1590	25	Blade-11 Tooth ●
9:3	17-1580	1	Spacer (0.5 Inch)
9:3	17-1600	1	Spacer (0.25 Inch)
9:3	82-6600	24	Spacer (0.73 Inch)
9:4	17-1580	1	Spacer (0.5 Inch)
9:5	108-4994	1	Spacer
9:6	67-5840	1	Nut-Jam
9:7	108-4958	1	Insert-RH
9:8	108-4957	1	Insert-LH

● Optional Equipment

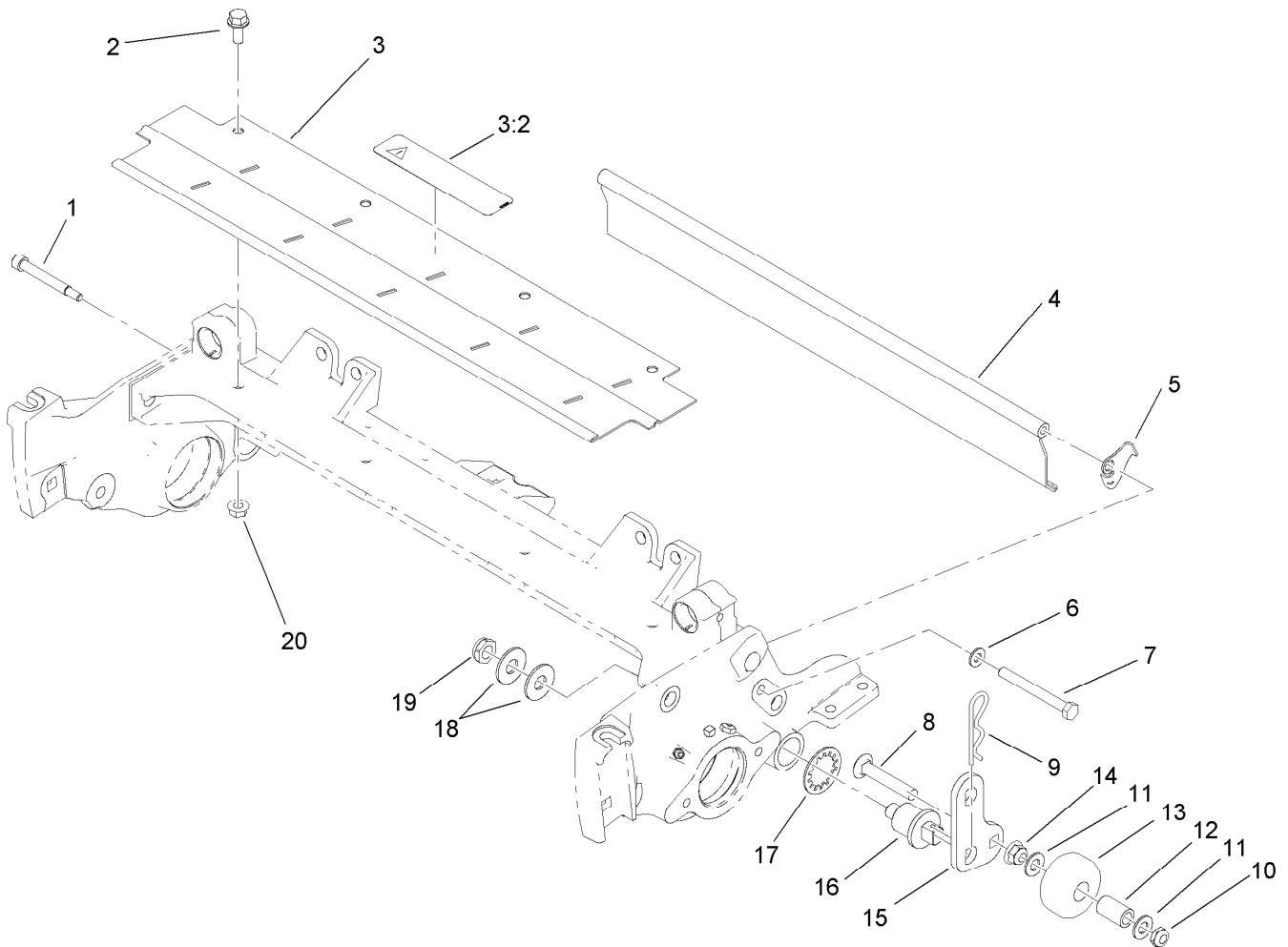
■ Not serviced separately



## Roller and Scraper Assembly

Ref.	Part Number	Qty.	Description	Ref.	Part Number	Qty.	Description
1	114-5404	1	2.5 In Dia Roller ASM (Long)	7:4	112-5290	2	Bearing-Steel, Stainless
1:1	114-5405-03	1	2.5 In Dia Long Roller Tube ASM	7:5	112-7494	4	Seal
1:2	114-5407	1	Shaft-Long, Rear Roller	7:6	114-5411	2	Nut-Bearing, Lock
1:3	114-3717	2	Seal-Oil	7:7	302-5	2	Fitting-Grease
1:4	112-5290	2	Bearing-Steel, Stainless	7:50	114-5430	1	Roller Rebuild Kit
1:5	112-7494	4	Seal	7:50:1	114-3717	2	Seal-Oil
1:6	114-5411	2	Nut-Bearing, Lock	7:50:2	112-5290	2	Bearing-Steel, Stainless
1:7	302-5	2	Fitting-Grease	7:50:3	112-7494	4	Seal
1:50	114-5430	1	Roller Rebuild Kit	7:50:4	114-5411	2	Nut-Bearing, Lock
1:50:1	114-3717	2	Seal-Oil	2	107-3279	1	Bracket-Scraper, LH
1:50:2	112-5290	2	Bearing-Steel, Stainless	3	107-3281	1	Bracket-Scraper, RH
1:50:3	112-7494	4	Seal	4	106-3925	4	Shim-Roller, 0.25
1:50:4	114-5411	2	Nut-Bearing, Lock	5	106-3924	2	Bracket-Roller, Rear
2	107-3279	1	Bracket-Scraper, LH	6	3230-7	4	Screw-CARR
3	107-3281	1	Bracket-Scraper, RH	7	114-5419	1	2.5 In Dia Full Front Roller ASM
4	106-3925	4	Shim-Roller, 0.25	7:1	114-5420-03	1	2.5 In Dia Roller Tube ASM (Long)
5	106-3924	2	Bracket-Roller, Rear	7:2	114-5403	1	Shaft-Roller, Front
6	3230-7	4	Screw-CARR	7:3	114-3717	2	Seal-Oil
7	114-5419	1	2.5 In Dia Full Front Roller ASM				
7:1	114-5420-03	1	2.5 In Dia Roller Tube ASM (Long)	8	108-4475-03	1	Scraper-Roller, Full Front (2.5 Inch)
7:2	114-5403	1	Shaft-Roller, Front	9	32128-20	2	Nut-HF
7:3	114-3717	2	Seal-Oil	10	322-16	2	Screw-HH
				11	3231-4	2	Screw-CARR
				12	107-2952	2	Bracket-HOC, Front
				13	104-8301	6	Nut-Flange, NI
				14	48-9220	4	Washer
				15	112-7451	2	Screw-TAP
				16	3290-357	2	Nut-HHF, Whiz
				17	104-8300	4	Nut-Flange, NI
				18	107-2999	1	Scraper Rod ASM
				25	115-0803	1	Roller Rebuild Tool Kit ●
				25:1	115-0852	1	Tool-Inner Seal
				25:2	107-8133	1	Washer-Flat
				25:3	115-0853	1	Tool-Bearing/Outer Seals

● Optional Equipment



## Roller Kickstand and Shield Assembly

Ref.	Part Number	Qty.	Description
1	107-7773	1	Screw-HSH
2	3234-7	4	Screw-HHF
3	107-2996	1	Front Grass Shield ASM
3:2	93-6688	1	Decal-Danger
4	107-7777-01	1	Rear Shield ASM
5	108-4961	1	Tab-Stop, Shield
6	3256-74	1	Washer-Flat
7	322-14	1	Screw-HH
8	3231-33	2	Screw-CARR
9	3290-355	2	Pin-Hair
10	3296-59	2	Nut-Lock, NI
11	48-9220	4	Washer
12	59-2580	2	Spacer-Tubular
13	108-4293	2	Roller
14	104-8301	2	Nut-Flange, NI
15	108-4286	2	Bracket-Adjustment
16	108-4289	2	Pin-Mount, Roller
17	3254-21	2	Washer-Lock/Int
18	3256-5	4	Washer-Flat
19	3296-28	2	Nut-Lock, NI
20	32128-20	4	Nut-HF



**Count on it.**