



Count on it.

Operator's Manual

Snowthrower

for Compact Utility Loaders

Model No. 22456—Serial No. 310000001 and Up

This product complies with all relevant European directives, for details please see the separate product specific Declaration of Conformity (DOC) sheet.

Introduction

This snowthrower is intended to be used on a Toro compact utility loader. It is designed primarily for removing snow from paved surfaces, such as driveways and sidewalks, and other surfaces for traffic on residential or commercial properties. It is not designed for removing materials other than snow, nor is it a model with a pivoting scraper designed for clearing off gravel surfaces. It is not designed for use on non-Toro traction units.

Read this information carefully to learn how to operate and maintain your product properly and to avoid injury and product damage. You are responsible for operating the product properly and safely.

You may contact Toro directly at www.Toro.com for product and accessory information, help finding a dealer, or to register your product.

Whenever you need service, genuine Toro parts, or additional information, contact an Authorized Service Dealer or Toro Customer Service and have the model and serial numbers of your product ready. The model and serial numbers are printed on a plate located on the right side of the drive head. Write the numbers in the space provided.

Model No. _____
Serial No. _____

This manual identifies potential hazards and has safety messages identified by the safety alert symbol (Figure 1), which signals a hazard that may cause serious injury or death if you do not follow the recommended precautions.



Figure 1

1. Safety alert symbol

This manual also uses 2 words to highlight information. **Important** calls attention to special mechanical information and **Note** emphasizes general information worthy of special attention.

Contents

Introduction.....	2
Safety	3
General Snowthrower Safety.....	3
Toro Snowthrower Safety	4
Stability Ratings.....	5
Safety and Instructional Decals	5
Setup.....	7
1 Installing the Discharge Chute.....	7
2 Installing the Cable Guide (200/300 Series Traction Units Only).....	7
3 Installing the Snowthrower	8
Product Overview	10
Specifications	10
Attachments/Accessories.....	10
Operation.....	10
Removing the Snowthrower.....	10
Operating Tips	10
Maintenance.....	12
Recommended Maintenance Schedule(s)	12
Checking/Adjusting the Discharge Chute	12
Checking the Auger Gear Box Oil	12
Replacing the Scraper Blade	13
Adjusting the Skids.....	13
Storage.....	14
Troubleshooting.....	15

Safety

Improper use or maintenance by the operator or owner can result in injury. To reduce the potential for injury, comply with these safety instructions and those in the traction unit *Operator's Manual*. Always pay attention to the safety alert symbol, which means *Caution*, *Warning*, or *Danger*—personal safety instruction. Failure to comply with the instruction may result in personal injury or death.

⚠ DANGER

When the snowthrower is in operation, the impeller and auger can be rotating and cut off or injure hands and feet.

- Before adjusting, cleaning, repairing and inspecting the snowthrower, and before unclogging the discharge chute, *move the auxiliary hydraulics lever to the off position, stop the engine, and wait for all moving parts to stop*. Remove the key.
- Use a stick, *not your hands*, to remove an obstruction from the discharge chute.
- Stay behind the handles and away from the discharge opening while operating the snowthrower.
- Keep face, hands, feet, and any other part of your body or clothing away from concealed, moving, or rotating parts.

⚠ WARNING

The auger/impeller may pick up and throw stones, toys, and other foreign objects, causing serious personal injury to the operator or to bystanders.

- Keep the area to be cleared free of all objects that could be picked up and thrown by the auger/impeller.
- Keep all children and pets away from area of operation.

⚠ WARNING

When the engine is off, attachments in the raised position can gradually lower. Someone nearby may be pinned or injured by the attachment as it lowers.

Always lower the attachment lift each time you shut off the traction unit.

⚠ WARNING

If you do not fully seat the attachment locking pins in the attachment mount plate holes, the attachment could fall off of the traction unit severely injuring the operator or bystanders.

- Ensure that you fully seat the attachment locking pins through the holes in the attachment mount plate before lifting the attachment.
- Ensure that the attachment mount plate is free of any dirt or debris that may hinder the connection of the traction unit to the attachment.
- Refer to your traction unit *Operator's Manual* for detailed information on safely connecting an attachment to your traction unit.

⚠ CAUTION

Hydraulic couplers, hydraulic lines/valves, and hydraulic fluid may be hot and can burn you if you touch them.

- Wear gloves when operating the hydraulic couplers.
- Allow the traction unit to cool before touching hydraulic components.
- Do not touch hydraulic fluid spills.

General Snowthrower Safety

The following instructions have been adapted from the ANSI/OPEI and ISO standards.

Preparation

- Thoroughly inspect the area where the equipment is to be used and remove all doormats, sleds, boards, wires, and other foreign objects.
- Do not operate the equipment without wearing adequate winter outer garments. Wear footwear that will improve footing on slippery surfaces.
- Adjust the auger housing height to clear gravel or crushed rock surface.
- Never attempt to make any adjustments while the engine is running, except when specifically recommended by Toro.
- Let engine and machine adjust to outdoor temperatures before starting to clear snow.
- The operation of any powered machine can result in foreign objects being thrown into the eyes. Always wear safety glasses or eye shields during operation or while performing an adjustment or repair.

Operation

- Do not put hands or feet near or under rotating parts. Keep clear of the discharge opening at all times.
- Exercise extreme caution when operating on or crossing gravel drives, walks, or roads. Stay alert for hidden hazards or traffic. Do not carry passengers.
- After striking a foreign object, stop the engine, cycle the auxiliary hydraulics lever, disconnect the hydraulic lines, thoroughly inspect the snowthrower for any damage, and repair the damage before restarting and operating the snowthrower.
- If the unit should start to vibrate abnormally, stop the engine and check immediately for the cause. Vibration is generally a warning of trouble.
- Stop the engine whenever you leave the operating position, before unclogging the auger/impeller housing or discharge chute, and when making any repairs, adjustments, or inspections.
- When cleaning, repairing, or inspecting, stop the engine, make certain the auger/impeller and all moving parts have stopped, cycle the auxiliary hydraulics lever, and disconnect the hydraulic lines.
- Do not clear snow across the face of slopes. Exercise extreme caution when changing direction on slopes. Do not attempt to clear steep slopes.
- Never operate the snowthrower without proper guards, plates, or other safety protective devices in place.
- Never operate the snowthrower near glass enclosures, automobiles, window wells, drop-offs, and the like without proper adjustment of the snow discharge angle. Keep children and pets away.
- Do not overload the machine capacity by attempting to clear snow at too fast a rate.
- Never operate the machine at high transport speeds on slippery surfaces. Look behind and use care when moving in reverse.
- Never direct discharge at bystanders or allow anyone in front of the unit.
- Disengage power to the auger/impeller when the snowthrower is transported or not in use.
- Never operate the snowthrower without good visibility or light.

Maintenance and Storage

- Check fasteners at frequent intervals for proper tightness to be sure the equipment is in safe working condition.

- Always refer to the *Operator's Manual* for important details if the snowthrower is to be stored for an extended period.
- Maintain or replace safety and instruction labels, as necessary.
- Run the machine a few minutes after throwing snow to prevent freeze-up of the auger/impeller.

Toro Snowthrower Safety

The following list contains safety information specific to Toro products or other safety information that you must know that is not included in the ANSI or ISO standards.

- The rotating auger/impeller or rotor blades can cut off or injure fingers or hands. Stay in the operator's position and away from the discharge opening while operating the snowthrower. Keep your face, hands, feet, and any other part of your body or clothing away from concealed, moving, or rotating parts.
- Before adjusting, cleaning, repairing, and inspecting the snowthrower, and before unclogging the discharge chute, stop the engine, remove the key, and wait for all moving parts to stop. Also, cycle the auxiliary hydraulics lever and disconnect the hydraulic lines.
- Use a stick, not your hands to remove obstructions from the discharge chute.
- Before leaving the operator's position, stop the engine, remove the key, and wait for all moving parts to stop.
- Do not wear loose fitting clothing that could possibly get caught in moving parts.
- If a shield, safety device, or decal is damaged, illegible, or lost, repair or replace it before beginning operation. Also, tighten any loose fasteners.
- Do not use the snowthrower on a roof.
- Perform only those maintenance instructions described in this manual. Before performing any maintenance, service, or adjustment, stop the engine, remove the key, cycle the auxiliary hydraulics lever, and disconnect the hydraulic lines. If major repairs are ever needed, contact your Authorized Toro Service Dealer.
- To ensure the best performance and safety, purchase only genuine Toro replacement parts and accessories to keep the Toro all Toro. Do not use "Will Fit" replacement parts and accessories as they could cause a safety hazard.
- When using the snowthrower in a raised position, stay away from overhead power lines and drive the traction unit only on level surfaces.

- Always transport the snowthrower in a lowered position.
- Use the snowthrower only to remove snow. Other materials may damage the snowthrower and cause a hazard.
- Do not tilt the snowthrower so that it discharges towards the operator or bystanders.

Stability Ratings

To determine the degree of slope you can traverse with the attachment installed on a traction unit, find the stability rating for the hill position you want to travel in the appropriate table below, then find the degree of slope for the same rating and hill position in the Stability Data section of the traction unit *Operator's Manual*.

⚠ WARNING

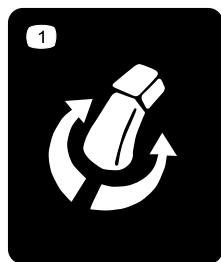
Exceeding the maximum recommended slope can cause the traction unit to tip, crushing you or bystanders.

Do not drive the traction unit on a slope steeper than the maximum recommended slope, as determined in the following tables and the traction unit *Operator's Manual*.

Safety and Instructional Decals



Safety decals and instructions are easily visible to the operator and are located near any area of potential danger. Replace any decal that is damaged or lost.

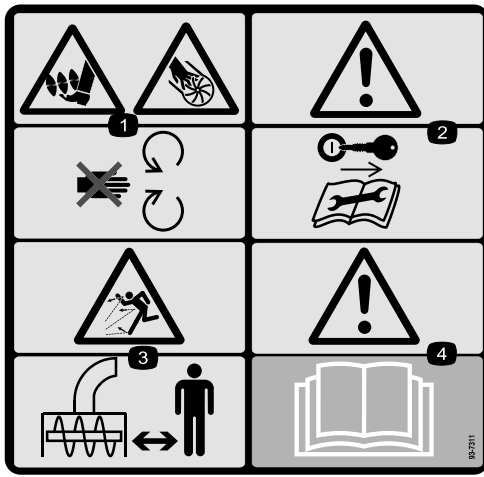


63-3510

1. Discharge chute rotation

Important: If you have a traction unit other than the TX, the snowthrower is rated for use without the counterweight. If you use the counterweight with the snowthrower, the traction unit will be less stable in the front and side uphill positions.

Orientation	Stability Rating
Front Uphill 	C
Rear Uphill 	C
Side Uphill 	B



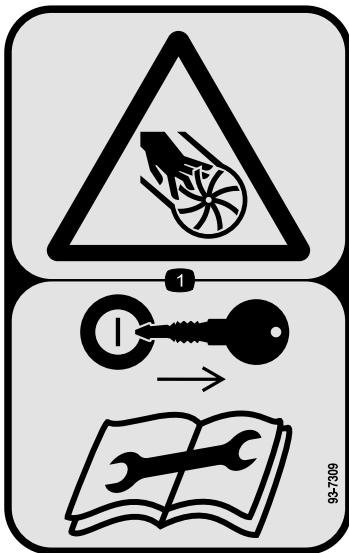
93-7133

1. Cutting/dismemberment hazard, auger/impeller—stay away from moving parts.
2. Warning—remove the ignition key and read the instructions before servicing or performing maintenance.
3. Thrown object hazard—keep bystanders away from the machine.
4. Warning—read the *Operator's Manual*.



93-7310

1. Cutting/dismemberment hazard, auger—keep bystanders away from the machine.



93-7309

1. Cutting/dismemberment hazard, impeller—remove the ignition key and read the instructions before servicing or performing maintenance.

Setup

Loose Parts

Use the chart below to verify that all parts have been shipped.

Procedure	Description	Qty.	Use
1	Snowthrower housing	1	Install the discharge chute.
	Discharge chute assembly	1	
	Deflector shield	1	
	Carriage bolt	3	
	Washer	3	
	Locknut	3	
2	Cable guide	1	Install the cable guide (200/300 series traction units only).
3	Chute control bracket	1	Instal the snowthrower.
	Knob	2	
	Handle clamp (200/300 series only)	1	
	Washer, large (200/300 series only)	1	
	Washer, small (200/300 series only)	1	
	Mounting bracket (TX series only)	1	
	Self-tapping screws (5/16 x 3/4 inch) (TX series only)	2	
	Retaining plate (TX series only)	1	

1

Installing the Discharge Chute

Parts needed for this procedure:

1	Snowthrower housing
1	Discharge chute assembly
1	Deflector shield
3	Carriage bolt
3	Washer
3	Locknut

Procedure

Install the deflector shield and the discharge chute assembly onto the snowthrower housing with three carriage bolts (heads to inside), washers, and lock nuts (Figure 2).

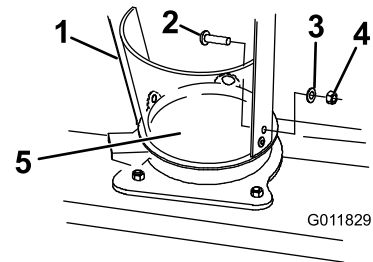


Figure 2

- | | |
|--------------------|---------------------|
| 1. Discharge chute | 4. Locknut |
| 2. Carriage bolt | 5. Deflector shield |
| 3. Washer | |

2

Installing the Cable Guide (200/300 Series Traction Units Only)

Parts needed for this procedure:

1	Cable guide
---	-------------

Procedure

1. If your traction unit has a bolt installed in the underside of the loader arm cross bar, between the right loader arm and the hydraulic hoses, remove the bolt.
2. Place the cable guide over the loader arm cross bar on the far right side (Figure 3).

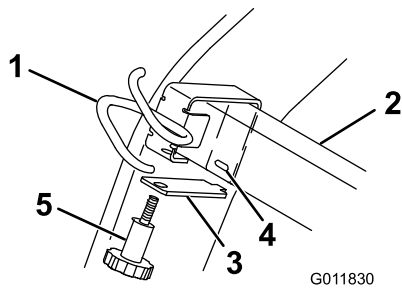


Figure 3

- | | |
|-------------------------|---------|
| 1. Cable guide | 4. Slot |
| 2. Loader arm cross bar | 5. Knob |
| 3. Clamp | |

3. Insert the clamp into the slot in the cable guide, then secure it with a knob (Figure 3).

3

Installing the Snowthrower

Parts needed for this procedure:

1	Chute control bracket
2	Knob
1	Handle clamp (200/300 series only)
1	Washer, large (200/300 series only)
1	Washer, small (200/300 series only)
1	Mounting bracket (TX series only)
2	Self-tapping screws (5/16 x 3/4 inch) (TX series only)
1	Retaining plate (TX series only)

Installing the Snowthrower on a 200/300 Series Traction Unit

1. Connect the snowthrower to the traction unit mount plate and connect the hydraulic lines. Refer to your traction unit *Operator's Manual* for instructions.
2. Locate the hole in the side plate of the frame (Figure 4) that is located just behind and to the left of the left handle.

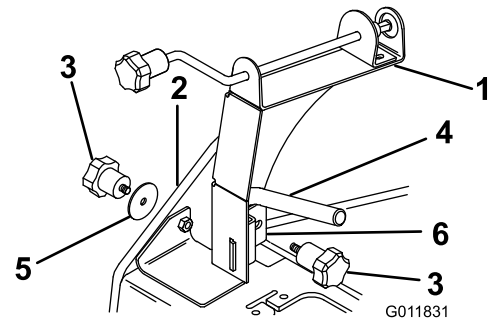


Figure 4

- | | |
|--------------------------|-----------------|
| 1. Chute control bracket | 4. Left handle |
| 2. Upper left side plate | 5. Large washer |
| 3. Knob | 6. Handle clamp |

If there is no hole, complete the following:

- A. Copy the template at the back of the book, cut out the template, and align it with the upper left side plate of the traction unit (the arrow on the template should point up).

Note: The template is designed to fit on the outside of the side plate.

- B. Mark the hole location on the side plate at the center of the cross hairs on the template.

- C. Drill a 3/8 to 1/2 inch (1 to 1.25 cm) hole through the frame at the marked location.
3. Place the chute control bracket between the left handle and the side plate (Figure 4).
4. Secure the bracket to the frame with a knob and the large washer (Figure 4).
5. Insert the handle clamp into the slot in the chute control bracket, wrapping it around the handle, then secure it with a knob (Figure 4).
6. Route the chute control cable through the cable guide.

Installing the Snowthrower on a TX Series Traction Unit

1. Connect the snowthrower to the traction unit mount plate and connect the hydraulic lines. Refer to your traction unit *Operator's Manual* for instructions.
2. Align the bracket assembly on the left side of the traction unit as illustrated in Figure 5.

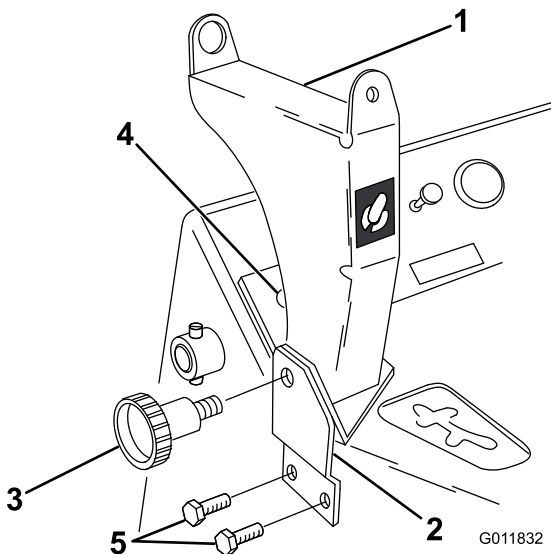


Figure 5

- | | |
|--------------------------|--|
| 1. Chute control bracket | 4. Location for 3/8 in. hole through the control panel. |
| 2. Mounting bracket | 5. Self-tapping screws (5/16 x 3/4 inch) and location of the two 0.290 in. holes through the frame |
| 3. Knob | |

6. Using a 3/8 inch drill bit, drill the hole for the control bracket in the control panel (Figure 5).
7. Install the mounting bracket with the 2 self-tapping screws (5/16 x 3/4 inch) (Figure 5)
8. Secure the control bracket to the control panel using the other knob and the retaining plate (inserted from behind the control panel) (Figure 6).

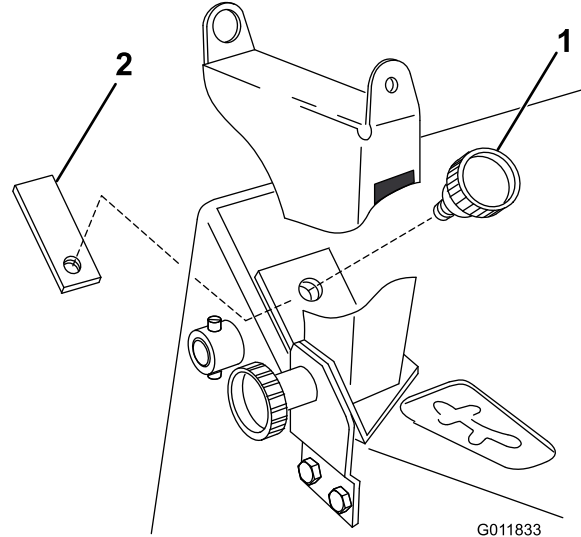


Figure 6

- | | |
|---------|--------------------|
| 1. Knob | 2. Retaining plate |
|---------|--------------------|

- 3.
4. Mark the hole locations on the traction unit for the two mounting bracket holes and for the hole in the control bracket on the control panel (Figure 5).
5. Using an 0.290 inch (size L) drill bit, drill the holes for the mounting bracket through the traction unit frame (Figure 5).

Product Overview

Specifications

Note: Specifications and design are subject to change without notice.

Width	47.75 inches (121.3 cm)
Length	43.2 inches (109.7 cm)
Height	50.4 inches (128 cm)
Weight	335 lbs (152 Kg)
Clearing width	44 inches (111.7 cm)

Attachments/Accessories

A selection of Toro approved attachments and accessories are available for use with the machine to enhance and expand its capabilities. Contact your Authorized Service Dealer or Distributor or go to www.Toro.com for a list of all approved attachments and accessories.

Operation

⚠ DANGER

When the snowthrower is in operation, the impeller and auger can be rotating and cut off or injure hands and feet.

- Before adjusting, cleaning, repairing and inspecting the snowthrower, and before unclogging the discharge chute, *move the auxiliary hydraulics lever to the off position, stop the engine, and wait for all moving parts to stop.* Remove the key.
- Use a stick, *not your hands*, to remove an obstruction from the discharge chute.
- Stay behind the handles and away from the discharge opening while operating the snowthrower.
- Keep face, hands, feet, and any other part of your body or clothing away from concealed, moving, or rotating parts.

Refer to your traction unit *Operator's Manual* for more information on installing and removing attachments on your traction unit.

Important: Always use the traction unit to lift and move the attachment.

Removing the Snowthrower

Note: To install the snowthrower, refer to Setup.

1. Start the engine and lower the attachment to the ground or onto a trailer, then stop the engine.
2. Remove the chute control bracket as follows:
 - On 200/300 series traction units, remove the knobs, washer, and handle clamp from the chute control bracket and remove the bracket.
 - On TX series traction units, remove the knobs and retaining plate from the chute control bracket and remove the bracket.
3. Install the fastening hardware on the chute control bracket for safe keeping.
4. On 200/300 series traction units, remove the chute control cable from the cable guide.
5. Disconnect the hydraulic lines and remove the snowthrower from the mount plate. Refer to your traction unit *Operator's Manual* for instructions.

Operating Tips

- Always use full throttle (maximum engine speed).

- If your traction unit has a speed selector, use the slow position (turtle).
- If your traction unit has a flow divider, set it as appropriate for the snow conditions (i.e., vary the setting from 10 o'clock for heavy snow to 12 o'clock for lighter snow).
- The discharge chute can be rotated 180° side to side. The direction is controlled by turning the chute control crank in the chute control bracket.
- The chute deflector, on top of the discharge chute, can be moved up and down to control the height and distance snow is thrown (Figure 7).

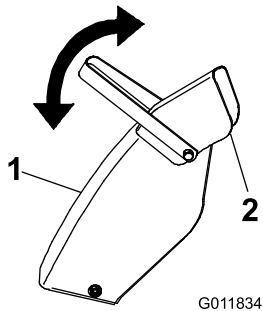


Figure 7

1. Discharge chute 2. Chute deflector

-
- Remove snow as soon as possible after it falls. This produces the best snow removal results.
 - Adjust the skids to match the type of surface being cleaned; refer to Adjusting Skids.
 - The snowthrower is designed to clean snow down to the contact surface, but there are times when the front of the snowthrower may tend to ride up. If this happens, reduce forward speed.
 - Discharge snow downwind whenever possible, and overlap each pass to ensure complete snow removal. If wheels slip, reduce forward speed.
 - Run the snowthrower for a few minutes after clearing snow so moving parts do not freeze.
 - Do not overload the snowthrower by clearing snow at too fast a rate. If the engine slows down, reduce forward speed or adjust the flow divider (where applicable) to supply more power to the snowthrower.
 - In some snow and cold weather conditions, some controls and moving parts may freeze. Therefore, when any control becomes hard to operate, stop the machine and wait for all moving parts to stop; then check all parts for freeze up. **Do not use excessive force when trying to operate frozen controls.** Free all controls and moving parts before operating.

Maintenance

Recommended Maintenance Schedule(s)

Maintenance Service Interval	Maintenance Procedure
Every 25 hours	<ul style="list-style-type: none"> • Check/adjust the discharge chute.
Every 50 hours	<ul style="list-style-type: none"> • Check the auger gear box oil.
Every 100 hours	<ul style="list-style-type: none"> • Check the condition of the scraper blade.
Before storage	<ul style="list-style-type: none"> • Paint chipped surfaces.
Yearly or before storage	<ul style="list-style-type: none"> • Check/adjust the discharge chute. • Check the auger gear box oil. • Check the condition of the scraper blade. • Adjust the skids as required.

⚠ CAUTION

If you leave the key in the traction unit ignition switch while the snowthrower is attached, someone could accidentally start the engine and seriously injure you or other bystanders.

Remove the key from the ignition and disconnect the wire(s) from the spark plug(s) before you do any maintenance, requiring that the snowthrower be attached to the traction unit. Set the wire(s) aside so that it does not accidentally contact the spark plug(s).

Checking/Adjusting the Discharge Chute

Service Interval: Every 25 hours

Yearly or before storage

Ensure that the chute rotates smoothly when the chute control crank is turned. If it does not rotate smoothly, adjust the worm gear as follows:

1. Loosen the worm bracket mounting screws (Figure 8), firmly pushing the worm gear against the teeth in the retaining ring.

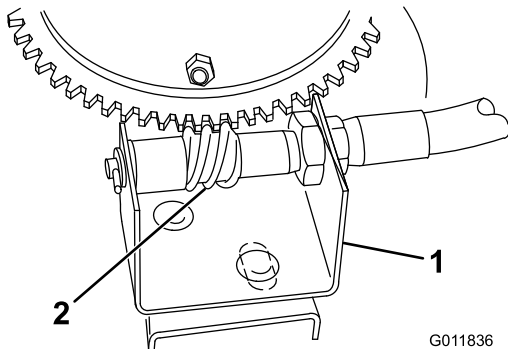


Figure 8

1. Worm bracket
2. Worm gear

2. While holding the bracket in place, tighten the mounting screws.

Checking the Auger Gear Box Oil

Service Interval: Every 50 hours

Yearly or before storage

1. With the snowthrower lowered and on a level surface, remove the pipe plug from the auger gear box (Figure 9) by placing the open end of a 3/8 in. drive socket extension over the plug and using a 3/8 in. open end wrench on the square end of the extension.

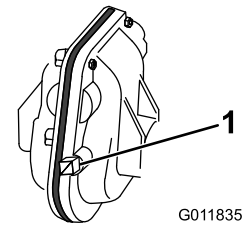


Figure 9

1. Pipe plug

2. Check the level of oil in the gear box. The oil must be at the point of overflowing in the filler opening.
3. If the oil level is low, add SAE 90 EP GL-4 transmission oil to the gear box.
4. Install the pipe plug in the gear box.

Replacing the Scraper Blade

Service Interval: Every 100 hours—Check the condition of the scraper blade.

Yearly or before storage—Check the condition of the scraper blade.

The scraper blade contacts the ground preventing damage to the snowthrower housing. Periodically inspect the scraper blade for wear. When the scraper becomes worn, before the working surface contacts the housing, replace the scraper blade.

1. Raise the snowthrower a foot off of the ground and stop the engine.
2. Remove the nuts, washers, carriage bolts, and scraper blade (Figure 10).

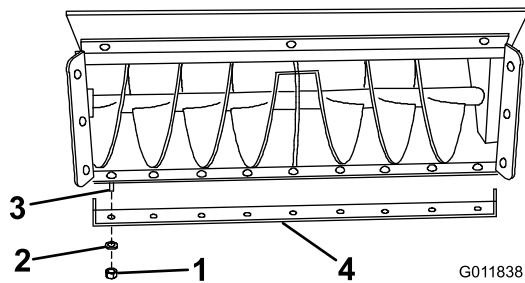


Figure 10

1. Nut
2. Washer
3. Carriage bolt
4. Scraper blade

3. Replace the scraper blade and secure the new blade with the previously removed hardware (Figure 10).

Adjusting the Skids

Service Interval: Yearly or before storage

The distance between the scraper blade and the ground is controlled by skids on each side of the housing. The height can be adjusted so the scraper blade will not catch on uneven surfaces

1. Lower the snowthrower until it is 1 to 2 inches (2.5 to 5 cm) above a level surface, then stop the engine.
2. Remove the nuts, washers, and bolts securing the skids to the housing (Figure 11).

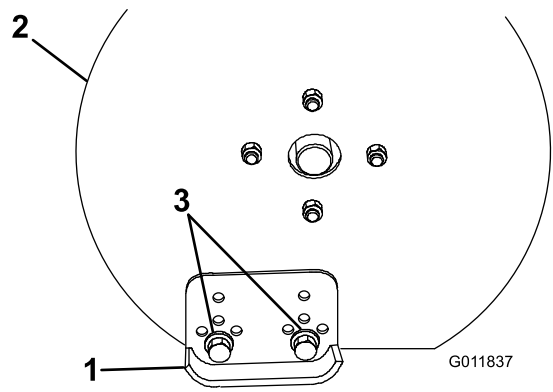


Figure 11

1. Skid
2. Housing
3. Nuts, washers, and bolts (bolt heads to the outside)

3. Position the skids equally on both sides, to obtain a level scraping action, and secure the skids with the nuts, washers, and bolts (Figure 11).

Note: On smooth, paved surfaces, the scraper blade can be close to the surface. On uneven, gravel or crushed rock surfaces, adjust the skids to raise the scraper, to prevent catching or picking up rocks.

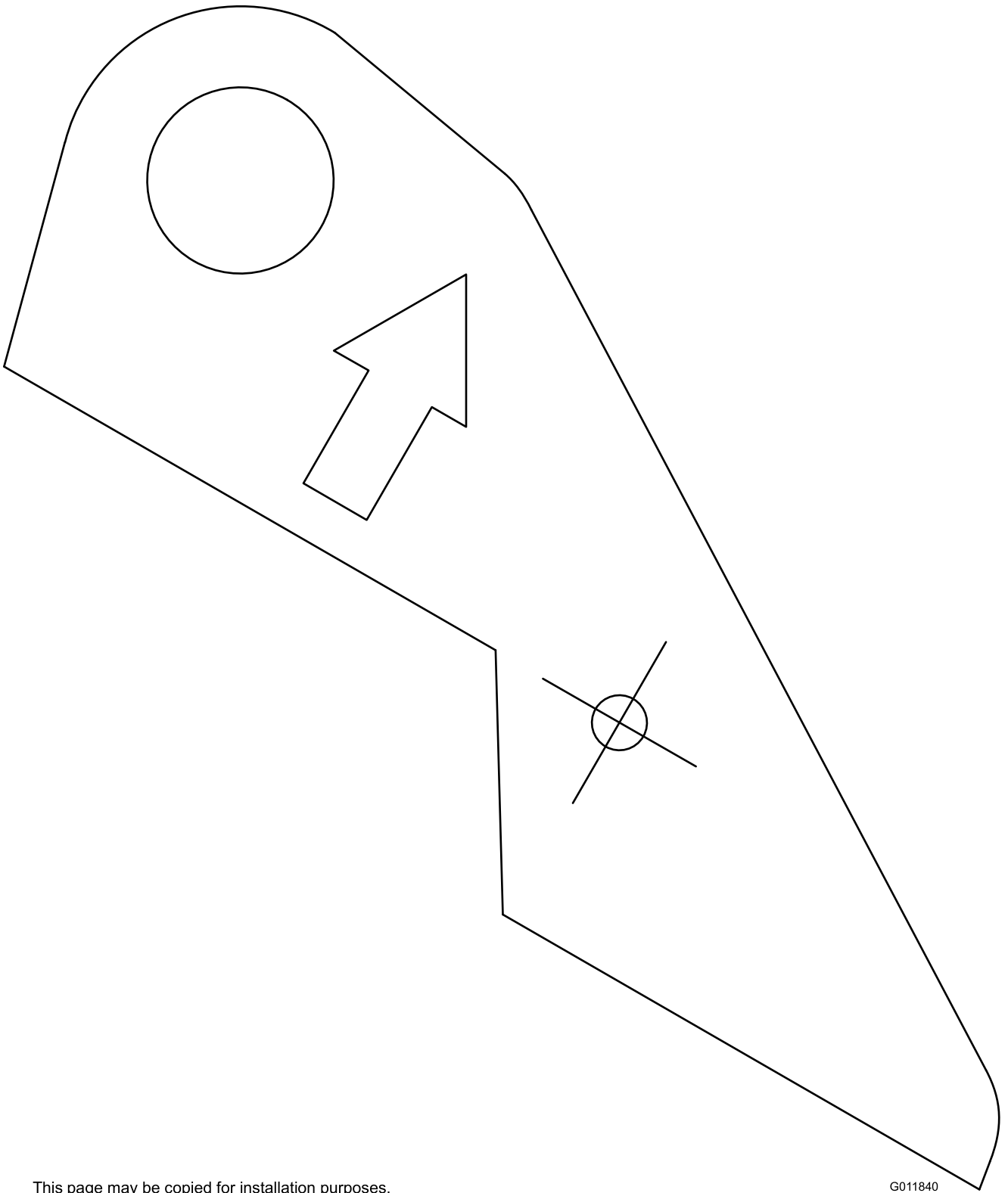
Important: The scraper should be higher above the pavement if the pavement surfaces on which the snowthrower will be used are cracked, rough, or uneven.

Storage

1. Before long term storage, wash the attachment with mild detergent and water to remove dirt and grime.
2. Check the condition of the scraper blade.
3. Check the auger gear box oil level.
4. Check and tighten all bolts, nuts, and screws. Repair or replace any damaged or worn part.
5. Paint all scratched or bare metal surfaces. Paint is available from your Authorized Service Dealer.
6. Store the attachment in a clean, dry garage or storage area. Cover it to protect it and keep it clean.

Troubleshooting

Problem	Possible Cause	Corrective Action
The snowthrower does not operate.	<ol style="list-style-type: none">1. A hydraulic coupler is not completely connected2. A hydraulic coupler is damaged.3. There is an obstruction in a hydraulic hose.4. A hydraulic hose is kinked.5. The auxiliary valve on the traction unit is not opening.6. A hydraulic motor is damaged or worn.	<ol style="list-style-type: none">1. Check and tighten all couplers.2. Check the couplers and replace any that are damaged.3. Find and remove the obstruction.4. Replace the kinked hose5. Repair the valve.6. Replace or repair the motor.



This page may be copied for installation purposes.

G011840

Notes:

Notes:



Toro Compact Utility Equipment Warranty

A One-Year Limited Warranty

CUE Products

Conditions and Products Covered

The Toro® Company and its affiliate, Toro Warranty Company, pursuant to an agreement between them, jointly warrant your Toro Compact Utility Equipment ("Product") to be free from defects in materials or workmanship. The following time periods apply from the date of purchase:

Products	Warranty Period
Loaders, Trenchers and Attachments	1 year or 1000 operating hours, whichever occurs first
Kohler Engines	3 years
All other Engines	2 years

Where a warrantable condition exists, we will repair the Product at no cost to you including diagnosis, labor, and parts.

Instructions for Obtaining Warranty Service

If you think that your Toro Product contains a defect in materials or workmanship, follow this procedure:

1. Contact any Authorized Toro Compact Utility Equipment (CUE) Service Dealer to arrange service at their dealership. To locate a dealer convenient to you, access our website at www.Toro.com. You may also call our Toro Customer Care Department toll free at 888-865-5676 (U.S. customers) or 888-865-5691 (Canadian customers).
2. Bring the product and your proof of purchase (sales receipt) to the Service Dealer.
3. If for any reason you are dissatisfied with the Service Dealer's analysis or with the assistance provided, contact us at:

LCB Customer Care Department
Toro Warranty Company
8111 Lyndale Avenue South
Bloomington, MN 55420-1196
Toll Free: 888-865-5676 (U.S. customers)
Toll Free: 888-865-5691 (Canada customers)

Owner Responsibilities

You must maintain your Toro Product by following the maintenance procedures described in the *Operator's Manual*. Such routine maintenance, whether performed by a dealer or by you, is at your expense. Parts scheduled for replacement as required maintenance ("Maintenance Parts"), are warranted for the period of time up to the scheduled replacement time for that part. Failure to perform required maintenance and adjustments can be grounds for disallowing a warranty claim.

Items and Conditions Not Covered

Not all product failures or malfunctions that occur during the warranty period are defects in materials or workmanship. This express warranty does not cover the following:

- Product failures which result from the use of non-Toro replacement parts, or from installation and use of add-on, modified, or unapproved accessories
- Product failures which result from failure to perform required maintenance and/or adjustments
- Product failures which result from operating the Product in an abusive, negligent or reckless manner
- Parts subject to consumption through use unless found to be defective. Examples of parts which are consumed, or used up, during normal Product operation include, but are not limited to, digging teeth, tines, spark plugs, tires, tracks, filters, chains, etc.
- Failures caused by outside influence. Items considered to be outside influence include, but are not limited to, weather, storage practices, contamination, use of unapproved coolants, lubricants, additives, or chemicals, etc.
- Normal "wear and tear" items. Normal "wear and tear" includes, but is not limited to, worn painted surfaces, scratched decals or windows, etc.
- Any component covered by a separate manufacturer's warranty
- Pickup and delivery charges

General Conditions

Repair by an Authorized Toro Compact Utility Equipment (CUE) Service Dealer is your sole remedy under this warranty.

Neither The Toro® Company nor Toro Warranty Company is liable for indirect, incidental or consequential damages in connection with the use of the Toro Products covered by this warranty, including any cost or expense of providing substitute equipment or service during reasonable periods of malfunction or non-use pending completion of repairs under this warranty. All implied warranties of merchantability and fitness for use are limited to the duration of this express warranty. Some states do not allow exclusions of incidental or consequential damages, or limitations on how long an implied warranty lasts, so the above exclusions and limitations may not apply to you.

This warranty gives you specific legal rights, and you may also have other rights which vary from state to state.

Except for the engine warranty coverage and the Emissions warranty referenced below, if applicable, there is no other express warranty. The Emissions Control System on your Product may be covered by a separate warranty meeting requirements established by the U.S. Environmental Protection Agency (EPA) or the California Air Resources Board (CARB). The hour limitations set forth above do not apply to the Emissions Control System Warranty. Refer to the California Emission Control Warranty Statement supplied with your Product or contained in the engine manufacturer's documentation for details.

Countries Other than the United States or Canada

Customers who have purchased Toro products exported from the United States or Canada should contact their Toro Distributor (Dealer) to obtain guarantee policies for your country, province, or state. If for any reason you are dissatisfied with your Distributor's service or have difficulty obtaining guarantee information, contact the Toro importer. If all other remedies fail, you may contact us at Toro Warranty Company.