



CE Kit

for Grass Collection System for Groundsmaster 7200 Series with 60-inch Mower

Model No. 117-9249

Installation Instructions

Note: Determine the left and right sides of the machine from the normal operating position.

Installation

Loose Parts

Use the chart below to verify that all parts have been shipped.

Procedure	Description	Qty.	Use
1	No parts required	–	Prepare the mower.
2	Warning decal Cover missing decal	1 1	Install the decals.
3	Blower cover	1	Install the cover.
4	Left guard Back guard Front guard Lower guard Bolt (5/16 x 7/8 inch) Flange nut (5/16 inch)	1 1 1 1 1 1	Install the guards.
5	Throttle stop	1	Install the throttle stop

1

Preparing the Mower

No Parts Required

Procedure

1. Thoroughly clean mower deck. All debris must be removed to ensure the kit will fit properly.
2. Repair all bent or damaged areas and replace any missing parts.

2

Installing the Decals

Parts needed for this procedure:

1	Warning decal
1	Cover missing decal

Procedure

1. Remove the blower cover (Figure 2). Discard the cover but retain the hardware.
2. Clean the area where the decals will go (Figure 1).
3. Install the decals as shown in Figure 1.
4. Do not re-install the blower cover at this time.

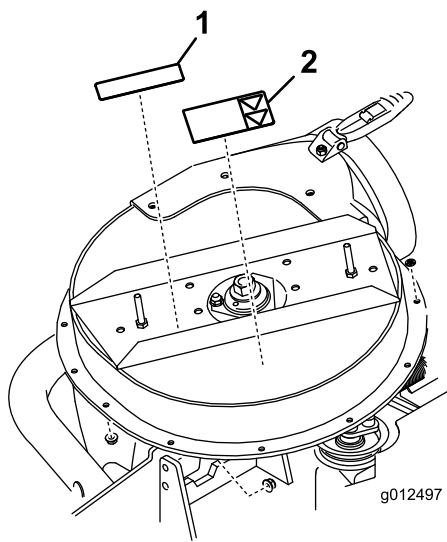


Figure 1

1. Cover missing decal 2. Warning decal

3

Installing the Cover

Parts needed for this procedure:

1	Blower cover
---	--------------

Procedure

Install the new blower cover using the hardware previously removed (Figure 2).

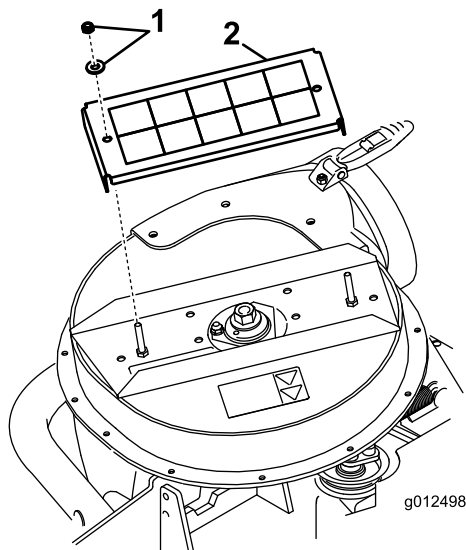


Figure 2

1. Existing hardware 2. New blower cover

4

Installing the Guards

Parts needed for this procedure:

1	Left guard
1	Back guard
1	Front guard
1	Lower guard
1	Bolt (5/16 x 7/8 inch)
1	Flange nut (5/16 inch)

Procedure

1. Remove the existing hardware around the blower for the left guard, lower guard and back guard (Figure 3). Save all existing hardware
2. Install the left guard with existing hardware (Figure 3).
3. Install the back guard with existing hardware (Figure 3).
4. Install the lower guard with existing hardware (Figure 3).
5. Install the front guard with a bolt (5/16 x 7/8 inch) and a flange nut (5/16 inch) (Figure 3).

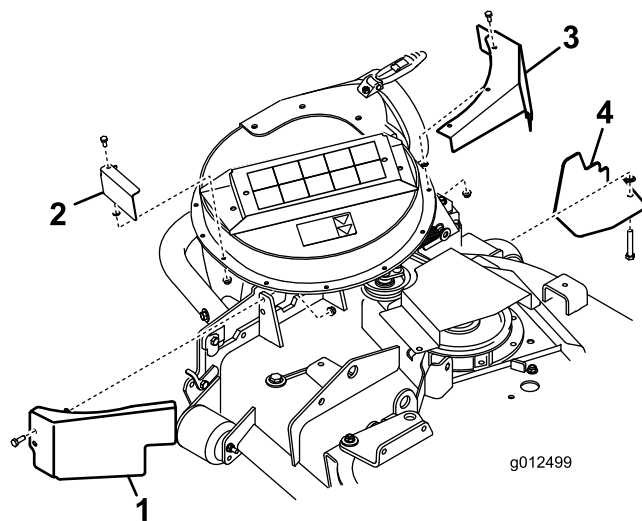


Figure 3

1. Front guard 3. Back guard
2. Left guard 4. Lower guard

5

Installing the Throttle Stop

Parts needed for this procedure:

1	Throttle stop
---	---------------

Procedure

1. Remove the nut and washer securing the speed control lever to the governor shaft (Figure 4).

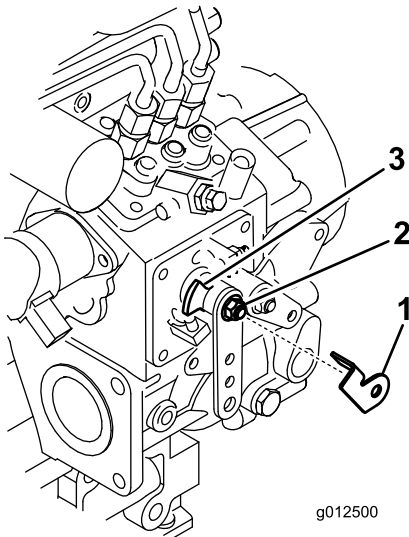


Figure 4

- | | |
|-------------------|------------------------|
| 1. Throttle stop | 3. Speed control lever |
| 2. Nut and washer | |
-
2. Insert the throttle stop onto the governor shaft so the tab rests against the flat on the speed control lever (Figure 4).
 3. Install the washer and nut onto the shaft and tighten to 86-106 ft-lbs.



Count on it.