



# TimeCutter™ Riding Mowers

Model No. All models

Form No. 3363-807 Rev A

## Setup Instructions

### Loose Parts

Use the chart below to verify that all parts have been shipped.

Procedure	Description	Qty.	Use
<b>1</b>	No parts required	–	Set up the motion control levers.
<b>2</b>	No parts required	–	Connect the battery.
<b>3</b>	Ignition Key Hose coupling Operator's Manual Engine Operator's Manual Operator Training Material	1 1 1 1 1	Complete the Setup.

**Note:** Determine the left and right sides of the machine from the normal operating position.

# 1

## Setting Up the Motion Control Levers

### No Parts Required

#### Procedure

1. Remove the upper bolt ( $3/8 \times 1$  inch) and washer; loosen the lower bolt ( $3/8 \times 1$  inch) as shown in Figure 1. Raise the motion control levers.
2. Align the holes in the motion control lever with the holes in the control arm shaft and install the bolt and washer removed previously (Figure 1). Hand tighten all fasteners. Repeat this for both controls levers.

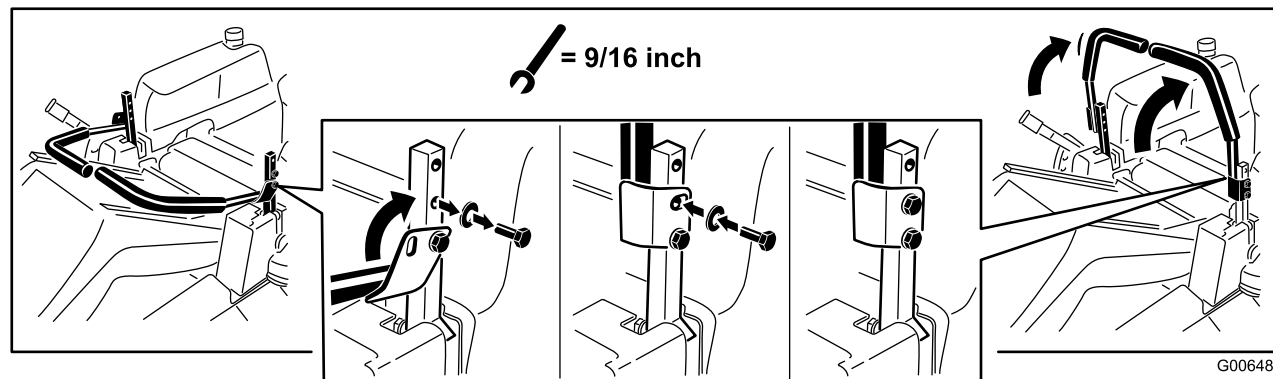
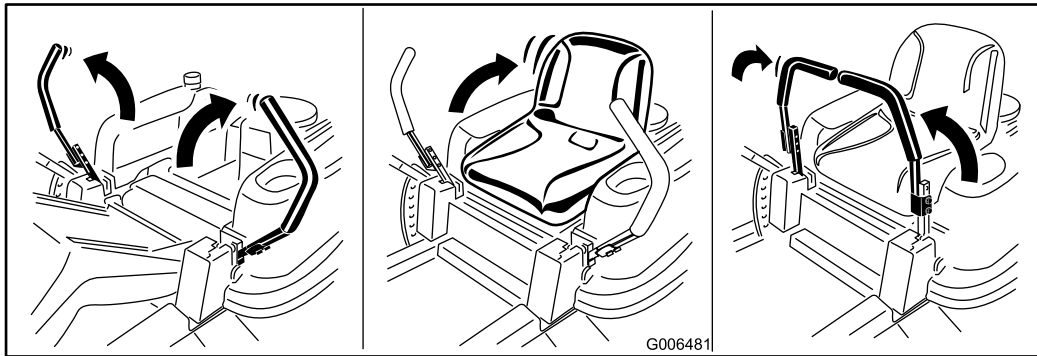


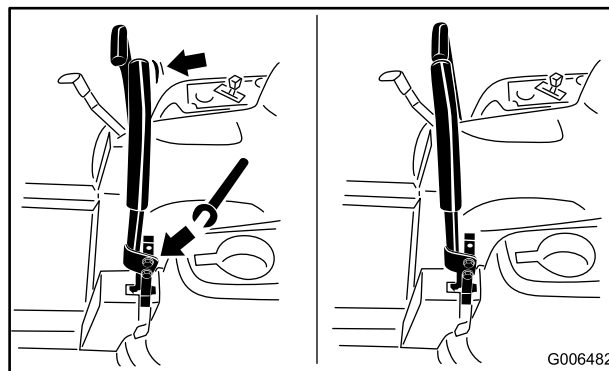
Figure 1

3. Open the motion control levers and raise the seat (Figure 2). Move the control levers back to the center position (neutral).



**Figure 2**

4. Verify the motion control levers are properly aligned (Figure 3). Adjust as necessary. Tighten all fasteners.



**Figure 3**

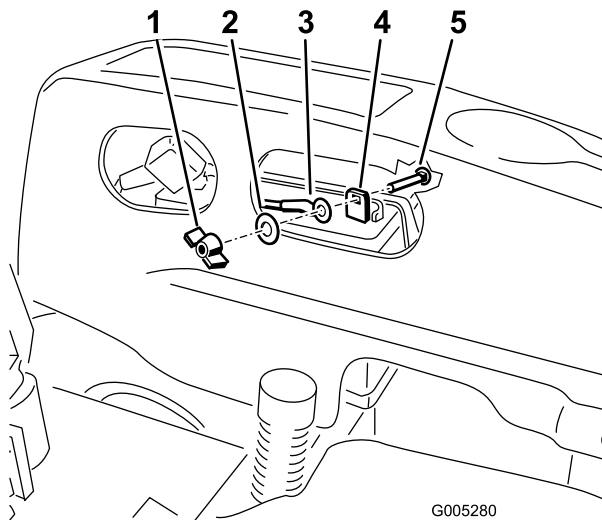
# 2

## Connecting the Battery

### No Parts Required

### Procedure

1. Locate the battery and negative battery cable in the left hand console of the machine.
2. Remove the fasteners on the negative battery post and use them to secure the negative battery cable to the negative battery post (Figure 4).



**Figure 4**

1. Wing nut
2. Washer
3. Negative battery cable
4. Negative battery post
5. Carriage bolt

# 3

## Completing the Setup

### Parts needed for this procedure:

1	Ignition Key
1	Hose coupling
1	<i>Operator's Manual</i>
1	<i>Engine Operator's Manual</i>
1	Operator Training Material

### Procedure

#### Checking the Tire Pressure

Check the front and rear tires for proper inflation. Refer to Checking the Tire Pressure in the *Operator's Manual* for the recommended inflation pressure.

#### Checking the Side Discharge Chute

Remove the packing restraint holding the side discharge chute up and lower the chute into place.

#### Checking the Engine Oil Level

Before you start the engine and use the machine, check the oil level in the engine crankcase; refer to Checking the Oil Level in the *Operator's Manual*.

#### Checking the Mower Adjustment

The mower deck was leveled at the factory. If the mower is not cutting level, adjust the side-to-side level and the front-to-rear blade slope. See the *Operator's Manual* for the proper procedure.

#### Review the Remaining Parts

Keep all the following items with the machine:

- Ignition Key
- Hose coupling
- *Operator's Manual*
- *Engine Operator's Manual*
- View the Operator training material.



**Count on it.**