



# Ultra Blower/Vacuum

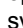
Model No. 51594—Serial No. 31000001 and Up

## Operator's Manual

This product is hand held electric blower and vacuum. It is intended for residential use for blowing dirt, debris, and loose materials and for vacuuming light organic matter, such as grass and leaves. It is not intended for use in enclosed or highly dusty areas, for starting fires, or for vacuuming hard objects. Product Weight: 10.5 lb (4.8 kg)

This product complies with all relevant European directives, for details please see the separate product specific Declaration of Conformity (DOC) sheet.

## Safety

To ensure maximum safety, best performance, and to gain knowledge of the appliance, it is essential that you or any other operator of the appliance read and understand the contents of this manual before operating the appliance. Pay particular attention to the safety alert symbol  which means CAUTION, WARNING or DANGER—personal safety instruction. Read and understand the instruction because it has to do with safety. **Failure to comply with these instructions may result in personal injury, risk of fire, or electrical shock.**

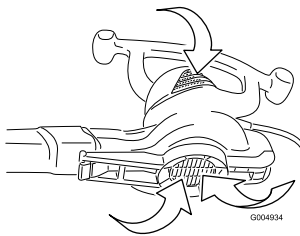
**NOTICE!** This appliance is for household use only.

## Training

- Read the instructions carefully. Be familiar with the controls and the proper use of the appliance.
- Never allow children to use the appliance.
- Never allow people unfamiliar with these instructions to use the appliance. Local regulations may restrict the age of the operator.
- Never operate the appliance while people, especially children, or pets are nearby.
- The operator or user is responsible for accidents or hazards occurring to other people or their property.

## Preparation

- While operating the appliance, always wear substantial footwear and long trousers.
- Do not wear loose clothing or jewelry that can be drawn into the air inlet (refer to the following figure). Keep long hair away from the air inlets.



- Wear protective goggles while operating.
- To prevent dust irritation, wear a face mask.
- Before using, check the supply and extension cord for signs of damage and aging. Do not use the appliance if the cord is damaged or worn.

- Never operate the appliance with defective guards or shields, or without safety devices in place, such as the vacuum bag/vacuum tube or blower tube/inlet cover.
- Only use a CE approved, weather proof extension cord fitted with the proper plug for your location, according to local ordinances.

## Operation

- **Do not** use the appliance on wet surfaces. **Do not** expose it to rain. Store it indoors.
- Do not handle plug or appliance with wet hands.
- Always direct the cord to the rear away from the appliance.
- If a cord becomes damaged during use, disconnect the supply cord from the mains immediately. **Do not touch the cord before disconnecting the supply.**
- Do not carry the appliance by the cord, use the cord as a handle, close a door on the cord, or pull the cord around sharp edges or corners. Keep the cord away from heated surfaces.
- Turn off all controls before unplugging.
- Do not unplug by pulling on cord. To unplug, grasp the plug, not the cord.
- Disconnect the appliance from the power source as follows:
  - Whenever you leave the machine
  - Before clearing a blockage
  - Before checking, cleaning, or working on the appliance
  - If the appliance starts to vibrate abnormally
- Operate the appliance only in daylight or in good artificial light.
- Do not overreach and keep your balance at all times.
- Always be sure of your footing on slopes.
- Walk, never run.
- Keep all cooling air inlets clear of debris. Do not put any object into openings. Do not use with any opening blocked.
- Never blow debris in the direction of bystanders.
- Use extra care when cleaning on stairs.
- Do not use to vacuum up flammable or combustible liquids, such as gasoline, or use in areas where they may be present.
- Do not vacuum anything that is burning or smoking, such as cigarettes, matches, or hot ashes.
- This appliance is provided with double insulation (i.e., Class 2 device). Use only identical replacement parts. See instructions for servicing of Double-Insulated (Class 2) appliances.
- Lightning can cause severe injury or death. If lightning is seen or thunder is heard in the area, do not operate the machine; seek shelter.

## Maintenance and storage

- Keep all nuts, bolts, and screws tight to be sure the appliance is in safe working condition.
- Check the vacuum bag frequently for wear or deterioration.
- Replace worn or damaged parts.
- If appliance is not working as it should, has been dropped, damaged, left outdoors, or dropped into water, return it to a service dealer.

- Use only genuine replacement parts and accessories.
- Store the appliance in a dry place.

## Sound Pressure

This unit has a sound pressure level at the operator's ear of 97 dBA, which includes an Uncertainty Value (K) of 1 dBA.

Sound pressure level was determined according to the procedures outlined in EN ISO 11201.

## Sound Power

This unit has a guaranteed sound power level of 103 dBA, which includes an Uncertainty Value (K) of 1 dBA.


Sound power level was determined according to the procedures outlined in ISO 11094.

## Vibration

- Measured vibration level = 4.0 m/s<sup>2</sup>
- Uncertainty Value (K) = 2.0 m/s<sup>2</sup>

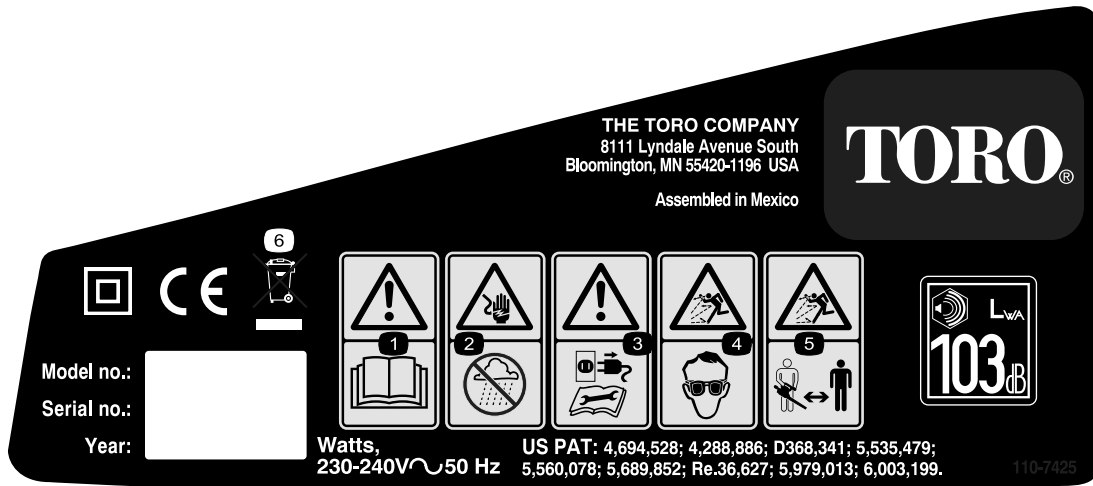
Measured values were determined according to the procedures outlined in EN ISO 20643.

## Waste of Electrical/Electronic Equipment (WEEE)

	<ul style="list-style-type: none"> <li>• EU directive 2002/96/EC classifies this product as an electrical or electronic tool.</li> <li>• <b>Do Not</b> dispose of this tool as unsorted municipal waste.</li> <li>• Dispose of this tool at a collection or recycling center according to local and national law.</li> <li>• The consumer has an important role in reducing the disposal of waste by returning waste electronic/electrical tools for recycling.</li> <li>• Recycling avoids the dispersion of hazardous materials into the municipal waste stream.</li> <li>• The crossed-out bin symbol reminds the user not to dispose of this product as unsorted municipal waste.</li> </ul>
---	--

## Safety and Instructional Decals

**NOTICE!** Safety and instruction decals are located near areas of potential danger. Replace damaged or lost decals.



THE TORO COMPANY  
8111 Lyndale Avenue South  
Bloomington, MN 55420-1196 USA  
Assembled in Mexico

**TORO**®

6

Model no.:

Serial no.:

Year:

1

2

3

4

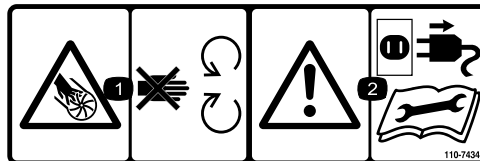
5

103 dBA L<sub>WA</sub>

Watts, 230-240V~50 Hz US PAT: 4,694,528; 4,288,886; D368,341; 5,535,479; 5,560,078; 5,689,852; Re.36,627; 5,979,013; 6,003,199. 110-7425

110-7425

1. Read the *Operator's Manual*.
2. Electric shock hazard—keep the blower out of the rain and other wet conditions.
3. Warning—disconnect the blower from the power outlet and read the instructions before servicing or performing maintenance.
4. Thrown object hazard—wear eye protection.
5. Thrown object hazard—keep bystanders a safe distance from the machine.
6. Contains recyclable materials, do not discard.



110-7434

1. Cutting/dismemberment hazard, impeller—stay away from moving parts.
2. Warning—disconnect the blower from the power outlet and read the instructions before servicing or performing maintenance.

# Setup

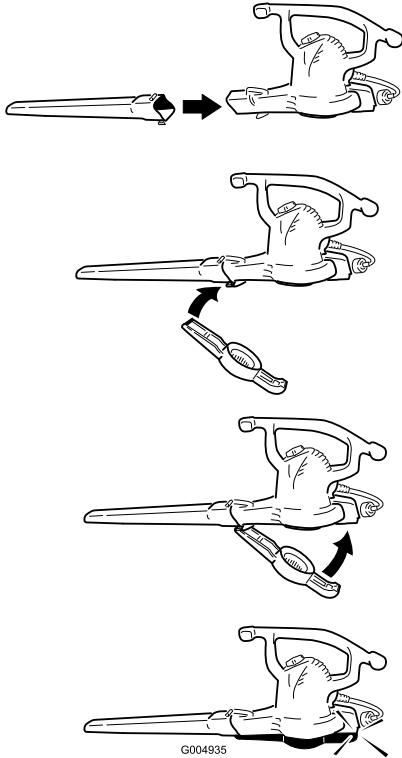
## 1

### Assembling the Blower

#### Parts needed for this procedure:

Install the blower tube and then the inlet cover onto the blower housing.

**NOTICE!** You must install the blower tube before installing the inlet cover because the inlet cover hooks onto the blower tube. The blower will not run unless the bottom inlet cover is locked in place.



## 2

### Converting from Blower to Vacuum

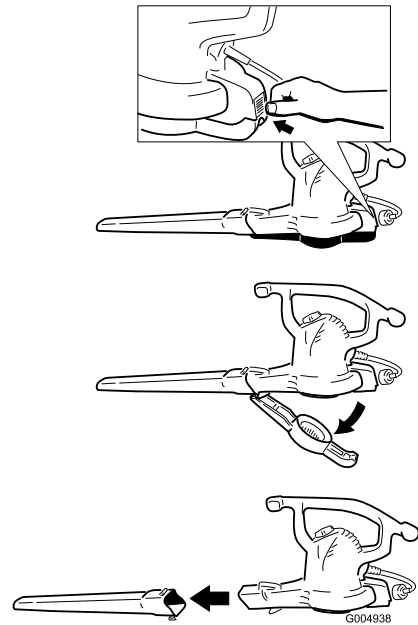
#### Parts needed for this procedure:

#### **⚠ WARNING**

The impeller rotates for a few seconds after you turn off the blower and can cut or injure fingers.

Do not remove the bottom inlet cover when the motor is running or when the unit is plugged into a power outlet.

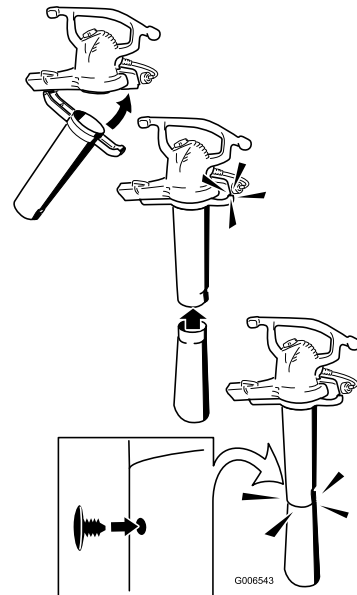
1. Remove the inlet cover and the blower tube from the blower housing.



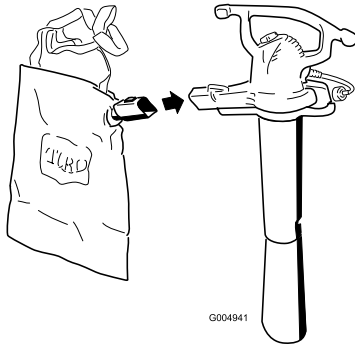
2. Install the vacuum tube onto the blower housing and connect the lower vacuum tube to the upper tube, securing it with the supplied fastener.

**NOTICE!** The vacuum will not run unless the vacuum tube is locked in place.

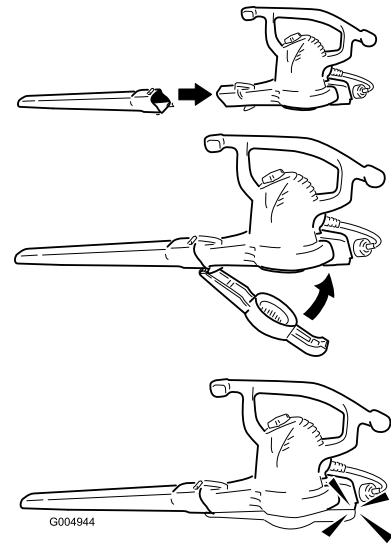
**Note:** You may need to push the connector firmly to ensure that it seats all the way into the vacuum tube.



3. Install the vacuum bag.



4. Adjust the strap as needed for comfortable operation.

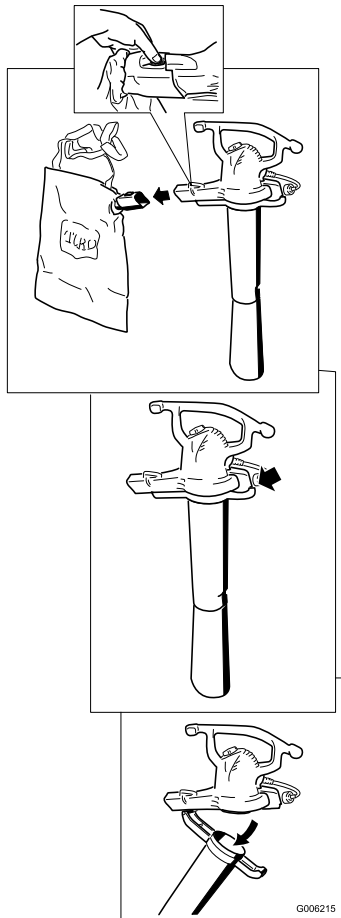


# 3

## Converting from Vacuum to Blower

### Parts needed for this procedure:

1. Remove the vacuum bag and the vacuum tube from the blower housing.



2. Install the blower tube and then the inlet cover onto the blower housing.

**NOTICE!** The blower will not run unless the bottom inlet cover is locked in place.

## Operation

**NOTICE!** This blower is intended for outdoor, residential use only. Do not use it indoors or for commercial or industrial purposes.

### Connecting to a Power Source

The power supply you use with this appliance should be a residential current device (RCD) with a tripping current of not more than 30 mA. Use only a CE approved extension cord recommended for outdoor use. Do not change the appliance or extension cord plug in any way.

### ⚠ WARNING

If you do not fully seat the extension cord on the inlet plug, or if the plug and cord do not fit firmly, the loose plug could lead to overheating and cause a fire, possibly burning you or others.

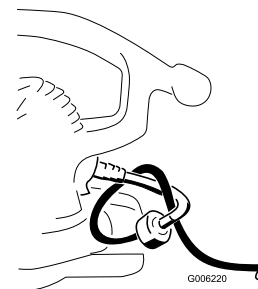
- Ensure that you fully seat the cord on the plug.
- Check the connection regularly to ensure that the cord is firmly attached.
- Do not use a worn-out or loose extension cord.

Extension Cord Length	Minimum Wire Gage
30 m	1.0 mm <sup>2</sup>
45 m	2.0 mm <sup>2</sup>

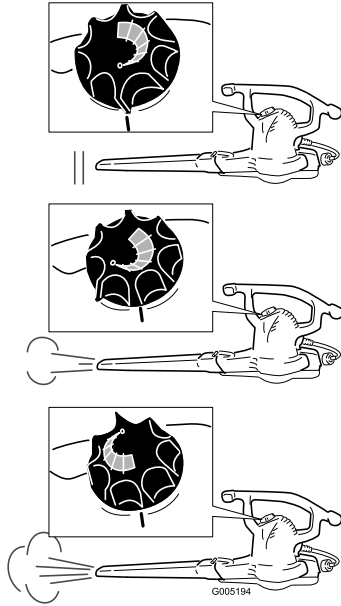
**Note:** Do not use an extension cord over 45 m.

**NOTICE!** Check the extension cord frequently during use for holes in the insulation. Do not use a damaged cord. Do not run the cord through standing water or wet grass.

Secure the extension cord to the blower cord using an overhand knot, as shown.



## Starting/Stopping/Adjusting the Air Speed

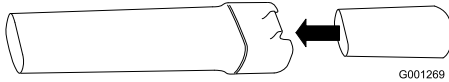


**NOTICE!** Vacuum only leaves and soft items. Hard items such as sticks, rocks, acorns, and pine cones will damage the impeller.

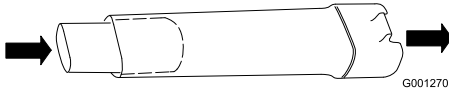
**NOTICE!** Do not force the vacuum tube into a pile of debris or hold the tube upright while force feeding debris into the tube. Either action may clog and damage the impeller. If the vacuum starts to vibrate or make abnormal noise, stop it, *unplug* the cord, and check for the cause.

## Using the Concentrator Nozzle Accessory

Install the concentrator nozzle into the blower tube to help reach into narrow spaces or to remove matted debris from hard surfaces.



Remove the concentrator nozzle when finished.



## Using the Blower

The blower is intended for residential use only. Use the blower outdoors to move debris as needed.

### ⚠ WARNING

The blower can throw debris, possibly causing serious personal injury to the operator or bystanders.

- Do not blow hard objects such as nails, bolts, or rocks.
- Do not operate the blower near bystanders or pets.
- Use extra care when cleaning debris from stairs or other tight areas.
- Wear safety goggles or other suitable eye protection, long pants, and shoes.

## Using the Vacuum

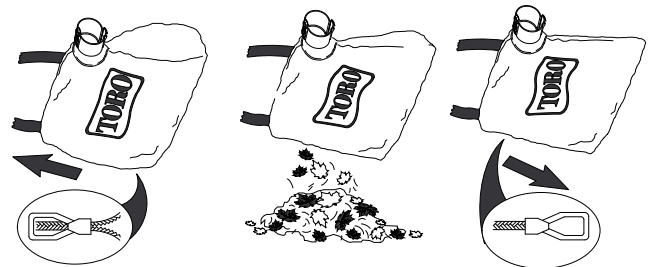
### ⚠ WARNING

The vacuum can throw debris, possibly causing serious personal injury to the operator or bystanders.

- Do not operate the vacuum without the bag installed or with the bag zipper open.
- Do not vacuum sharp, pointed, or hard objects that could be thrown through the fabric of the bag, such as wires, staples, nails, or rocks.

## Emptying the Bag

1. Turn off and unplug the vacuum from the power source.
2. Empty any debris from the bag.



Do not store debris in the bag. To clean the bag, turn it inside out and shake out any excess debris. Once a year, hand wash the bag in soapy water and allow it to air dry.

### ⚠ DANGER

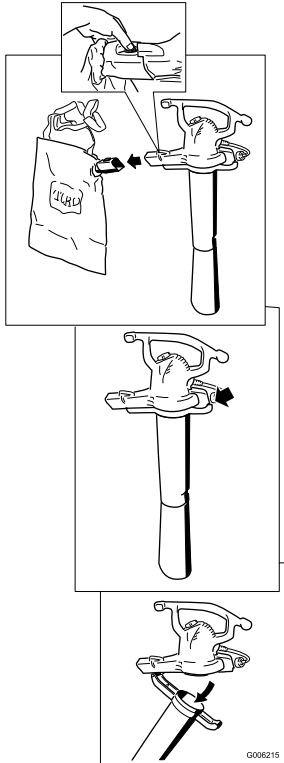
Normal usage of the bag causes it to wear and deteriorate over time. A worn or deteriorated bag allows small objects to be thrown through the bag, possibly injuring the operator or bystanders.

Check the bag frequently. If it is worn or deteriorated, replace it with a genuine Toro vacuum bag.

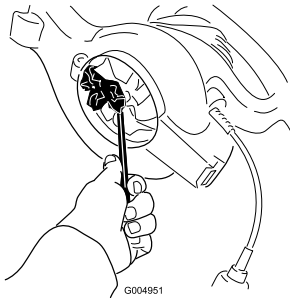
## Removing Clogged Debris from the Impeller

1. Turn off and **unplug** the vacuum from the power source and wait for all moving parts to stop.

2. Remove the vacuum tube.



3. Remove the debris from impeller blades.




4. Check the impeller for any signs of damage. If it is damaged, contact your Authorized Toro Dealer.
5. Install the vacuum tube or, if you want to switch to blower mode, the bottom inlet cover. Refer to Converting from Blower to Vacuum or Converting from Vacuum to Blower for more information.

## Service

Toro has designed this product to give you years of trouble free use. Should it need service, bring the product to your Authorized Toro Service Dealer. Your Toro Dealer is specially trained to repair Toro products and will ensure that your Toro stays "All" Toro.

## Double-insulated (Class 2) Appliances

In a double-insulated (Class 2) appliance, two systems of insulation are provided instead of grounding. No grounding means is provided on a double-insulated (Class 2) appliance, nor should a means for grounding be added to the appliance. Servicing a double-insulated (Class 2) appliance requires extreme care and knowledge of the system, and should be done only by the qualified service personnel at your Authorized Toro Service Dealer. Replacement parts for a double-insulated (Class 2) appliance must be identical to the parts they

replace. A double-insulated (Class 2) appliance is marked with the symbol (square within a square) .

## Storage

Store the blower/vacuum and extension cord indoors, in a cool dry location, out of reach of children and animals.

## Troubleshooting

- Ensure that the bottom inlet cover or vacuum tube is locked in place.
- Ensure that the power cord is secured in place on the back of the blower and that the plug is fully seated.

## International Distributor List

<b>Distributor:</b>	<b>Country:</b>	<b>Phone Number:</b>
Atlantis Su ve Sulama Sisstemleri Lt	Turkey	90 216 344 86 74
Balama Prima Engineering Equip.	Hong Kong	852 2155 2163
B-Ray Corporation	Korea	82 32 551 2076
Casco Sales Company	Puerto Rico	787 788 8383
Ceres S.A.	Costa Rica	506 239 1138
CSSC Turf Equipment (pvt) Ltd.	Sri Lanka	94 11 2746100
Cyril Johnston & Co.	Northern Ireland	44 2890 813 121
Equiver	Mexico	52 55 539 95444
Femco S.A.	Guatemala	502 442 3277
G.Y.K. Company Ltd.	Japan	81 726 325 861
Geomechaniki of Athens	Greece	30 10 935 0054
Guandong Golden Star	China	86 20 876 51338
Hako Ground and Garden	Sweden	46 35 10 0000
Hako Ground and Garden	Norway	47 22 90 7760
Hayter Limited (U.K.)	United Kingdom	44 1279 723 444
Hydroturf Int. Co Dubai	United Arab Emirates	97 14 347 9479
Hydroturf Egypt LLC	Egypt	202 519 4308
Ibea S.P.A.	Italy	39 0331 853611
Irriamc	Portugal	351 21 238 8260
Irrigation Products Int'l Pvt Ltd.	India	86 22 83960789
Jean Heybroek b.v.	Netherlands	31 30 639 4611
Lely (U.K.) Limited	United Kingdom	44 1480 226 800
Maquiver S.A.	Colombia	57 1 236 4079
Maruyama Mfg. Co. Inc.	Japan	81 3 3252 2285
Metra Kft	Hungary	36 1 326 3880
Mountfield a.s.	Czech Republic	420 255 704 220
Munditol S.A.	Argentina	54 11 4 821 9999
Oslinger Turf Equipment SA	Ecuador	593 4 239 6970
Oy Hako Ground and Garden Ab	Finland	358 987 00733
Parkland Products Ltd.	New Zealand	64 3 34 93760
Prochaska & Cie	Austria	43 1 278 5100
RT Cohen 2004 Ltd.	Israel	972 986 17979
Riversa	Spain	34 9 52 83 7500
Roth Motorgerate GmBh & Co.	Germany	49 7144 2050
Sc Svend Carlsen A/S	Denmark	45 66 109 200
Solvart S.A.S.	France	33 1 30 81 77 00
Spypros Stavrinides Limited	Cyprus	357 22 434131
Surge Systems India Limited	India	91 1 292299901
T-Markt Logistics Ltd.	Hungary	36 26 525 500
Toro Australia	Australia	61 3 9580 7355
Toro Europe BVBA	Belgium	32 14 562 960



# The Toro Warranty

## Conditions and Products Covered

The Toro® Company and its affiliate, Toro Warranty Company, pursuant to an agreement between them, jointly promise to repair the Toro Product listed below if used for residential purposes\* if defective in materials or workmanship.

The following time periods apply from the date of purchase:

<b>Products</b>	<b>Warranty Period</b>
Walk Power Mowers	2 year limited warranty
Rear Engine Riders	2 year limited warranty
Lawn & Garden Tractors	2 year limited warranty
Electric Hand Held Products	2 year limited warranty
Snowthrowers	2 year limited warranty
Consumer Zero Turn	2 year limited warranty

\*Original Purchaser means the person who originally purchased the Toro Product

\*Residential purposes means use of the product on the same lot as your home. Use at more than one location, or institutional or rental use, is considered commercial use, and the commercial use warranty would apply.

## Limited Warranty for Commercial Use

Toro Consumer Products and attachments used for commercial, institutional, or rental use, are warranted against defects in materials or workmanship for the following time periods from the date of original purchase:

<b>Products</b>	<b>Warranty Period</b>
Walk Power Mowers	90 day warranty
Rear Engine Riders	90 day warranty
Lawn & Garden Tractors	90 day warranty
Electric Hand Held Products	90 day warranty
Snowthrowers	90 day warranty
Consumer Zero Turn	45 day warranty

## Instructions for Obtaining Warranty Service

If you think that your Toro Product contains a defect in materials or workmanship, follow this procedure:

1. Contact your seller to arrange service of the product. If for any reason it is impossible for you to contact your seller, you may contact any Toro Authorized Distributor to arrange service.
2. Bring the product and your proof of purchase (sales receipt) to the Service Dealer. If for any reason you are dissatisfied with the Service Dealer's analysis or with the assistance provided, contact us at:

Customer Care Department, Consumer Division  
 The Toro Company  
 8111 Lyndale Avenue South  
 Bloomington, MN 55420-1196  
 Manager: Technical Product Support: 001-952-887-8248

See attached Distributor List

## Owner Responsibilities

You must maintain your Toro Product by following the maintenance procedures described in the *Operator's Manual*. Such routine maintenance, whether performed by a dealer or by you, is at your expense.

## Items and Conditions Not Covered

This express warranty does not cover the following:

- Cost of regular maintenance service or wear parts, such as rotor blades (paddles), scraper blades, belts, fuel, lubricants, oil changes, spark plugs, cable/linkage or brake adjustments
- Any product or part which has been altered or misused and requires replacement or repair due to accidents or lack of proper maintenance
- Repairs necessary due to failure to use fresh fuel (less than one month old), or failure to properly prepare the unit prior to any period of non-use over one month
- Engine and transmission. These are covered by the appropriate manufacturer's guarantees with separate terms and conditions

All repairs covered by these warranties must be performed by an Authorized Toro Service Dealer using Toro approved replacement parts.

## General Conditions

The purchaser is covered by the national laws of each country. The rights to which the purchaser is entitled with the support of these laws are not restricted by this warranty.