



Count on it.

Parts Catalog

**Debris Blower, Groundsmaster®
300 Series**

Model No. 30855—Serial No. 31000001 and Up

Ordering Replacement Parts

To order replacement parts, please supply the part number, the quantity, and the description of each part desired.

Understanding Reference Numbers

Each identified part in an illustration has a reference number. The reference number for a part also appears in the parts list, along with other information about the part.

This catalog uses two special reference number formats, one to indicate parts in a service assembly and another to indicate the quantity of a given part in an illustration.

Service Assembly Reference Numbers

Parts in service assemblies have reference numbers in the form a:b. The a represents the reference number of the entire service assembly and the b represents a sequential number unique to each part within the service assembly.

For example, a wheel assembly might be identified by reference number 6, the tire by 6:1, the valve by 6:2, and the wheel by 6:3. When you order the assembly identified by reference number 6, you receive all parts identified by reference numbers 6:1, 6:2, and 6:3. However, you may also order any part individually. Reference numbers of this type appear in illustration and in parts lists.

Reference Numbers Indicating Quantity

In an illustration, if a reference number indicates more than one part, the reference number has the form nX y. The n represents the quantity of the part, the X is the multiplication symbol, and the y represents the reference number.

For example, in an illustration, the reference number 2X 37 means that two of the parts identified by reference number 37 are indicated.

List of Abbreviations

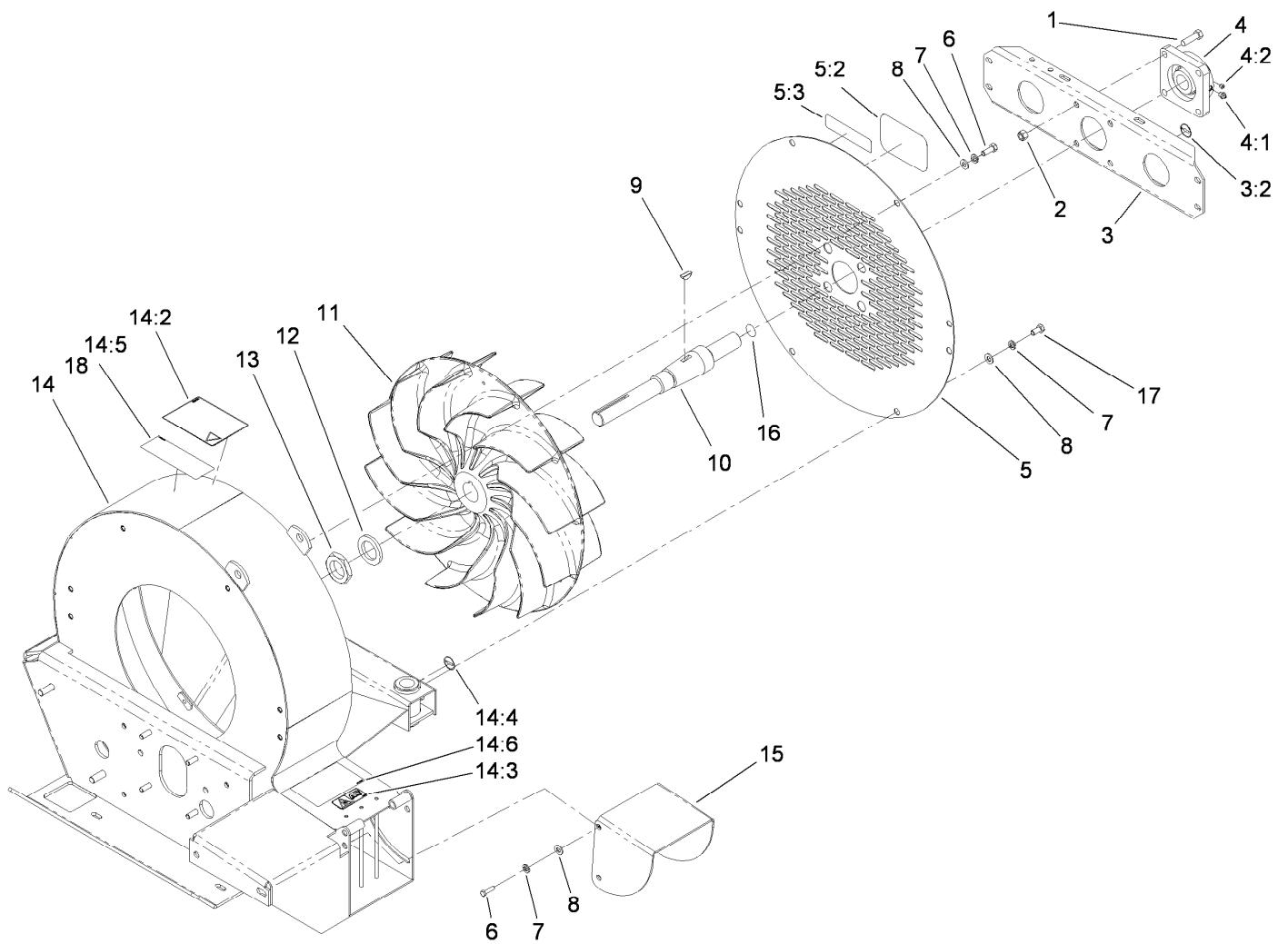
AR: as required
ASM: assembly
BBC: blade brake clutch
CARR: carriage
CCW: counter clock wise
CW: clockwise
DEG: degrees
ECM: electronic control module
EXT: external
FH: flat head
GA: gauge
HD: heavy-duty
HF: hex flange
HH: hex head
HHF: hex head flange
HHFTF: hex head flange thread forming
HJ: hex jam
HLH: hex lag head
HOC: height-of-cut

HSBH: hex socket button head
HSFH: hex socket flat head
HSH: hex socket head
HWH: hex washer head
HWHTF: hex washer head thread forming
HYD: hydraulic
LH: left hand
NI: nylon insert
NPTF: national pipe thread fine
PFH: phillips flat head
PPH: phillips pan head
PPHTF: phillips pan head thread forming
PRH: phillips round head
PTH: phillips truss head
PTO: power-take-off
RH: right hand
ROPS: roll-over protection system
RRB: rear roller brush

SFH: slotted fillister head
SHH: slotted hex head
SHWH: slotted hex washer head
SPH: slotted pan head
SQH: square head
SRH: slotted round head
STD: standard
TAP: self tapping
TTH: torx truss head

Contents

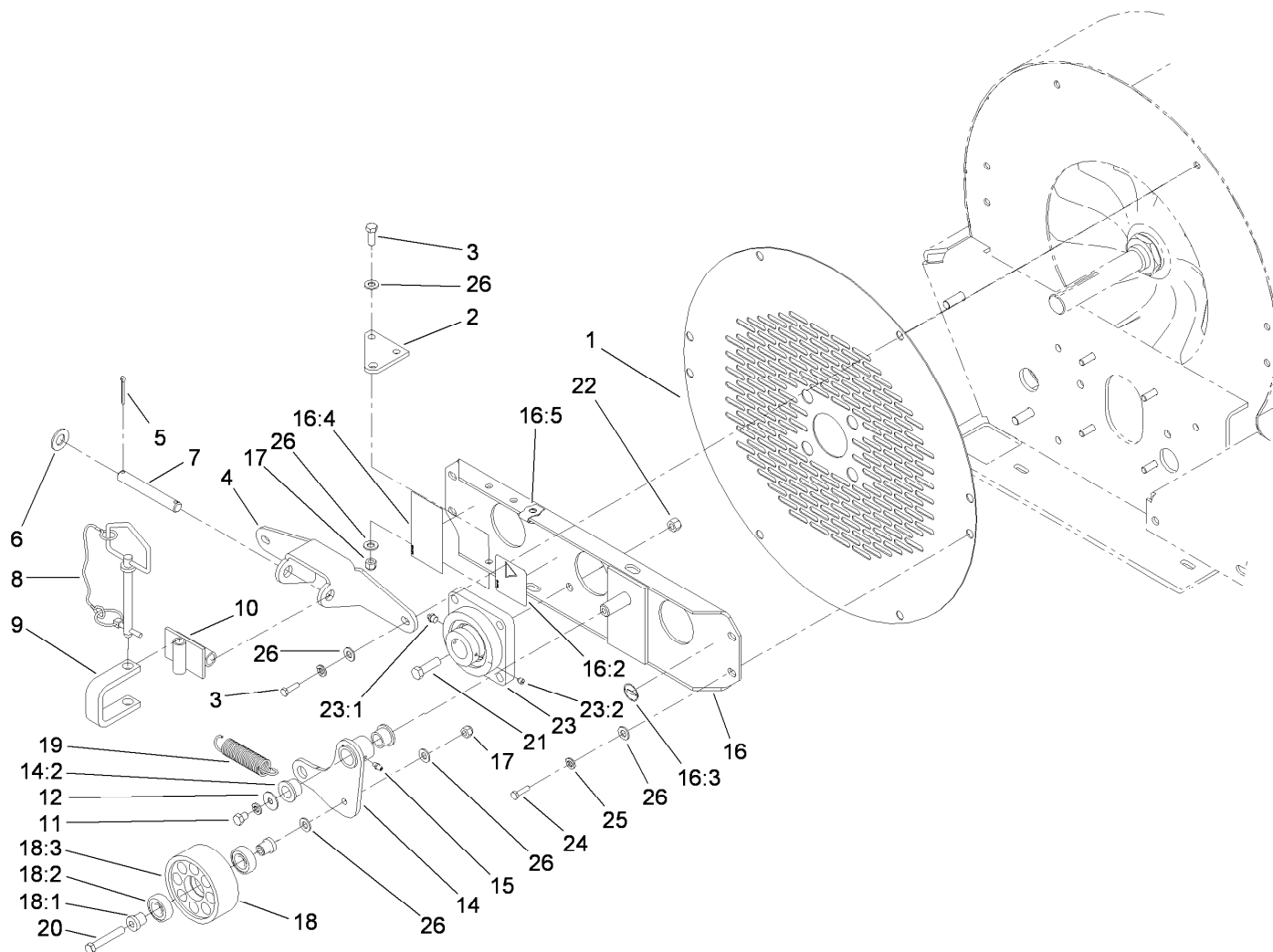
- Blower and Fan Assembly 4
- Bearing and Screen Assembly..... 5
- Drive Shaft and Belt Assembly..... 6
- Drive Shaft Assembly No. 104-0264..... 7
- Castor Assembly 8



Blower and Fan Assembly

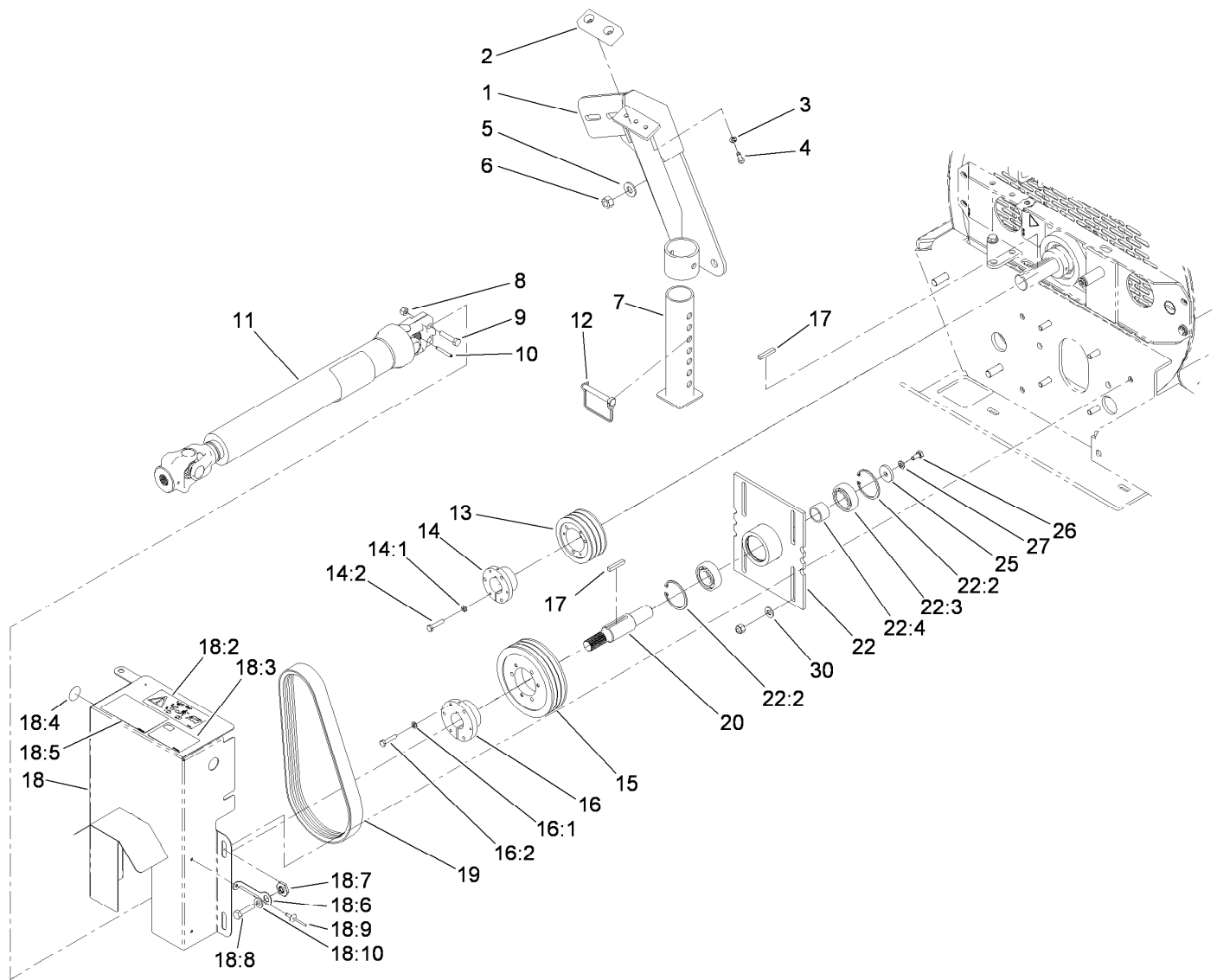
Ref.	Part Number	Qty.	Description
1	324-6	4	Screw-HH
2	3296-48	4	Nut-Lock, NI
3	119-4757	1	Plate ASM
3:2	58-6520	1	Decal-Grease
4	94-8987	1	Bearing
4:1	302-52	1	Fitting-Grease
4:2	106-9662	1	Screw-Set, HSH
5	99-4479	1	Screen-Front
5:2	67-1300	1	Decal
5:3	93-9083	1	Decal-Caution
6	323-6	10	Screw-HH
7	3253-21	12	Washer-Lock
8	3256-24	12	Washer-Flat
9	3257-42	1	Key-Woodruff

Ref.	Part Number	Qty.	Description
10	100-4070	1	Shaft-Fan
11	94-8950	1	Fan
12	77-0950	1	Washer-Castor
13	3218-17	1	Nut-Jam
14	100-4078	1	Housing ASM
14:2	98-3110	1	Decal-Caution
14:3	93-6674	1	Decal-Warning
14:4	58-6520	2	Decal-Grease
14:5	105-0707	1	Decal-Warning
14:6	105-0708	1	Decal-Danger
15	98-1140-01	1	Chute Fan ASM
16	98-3111	1	Decal-Rotating
17	323-4	2	Screw-HH
18	105-0698	1	Decal-Caution



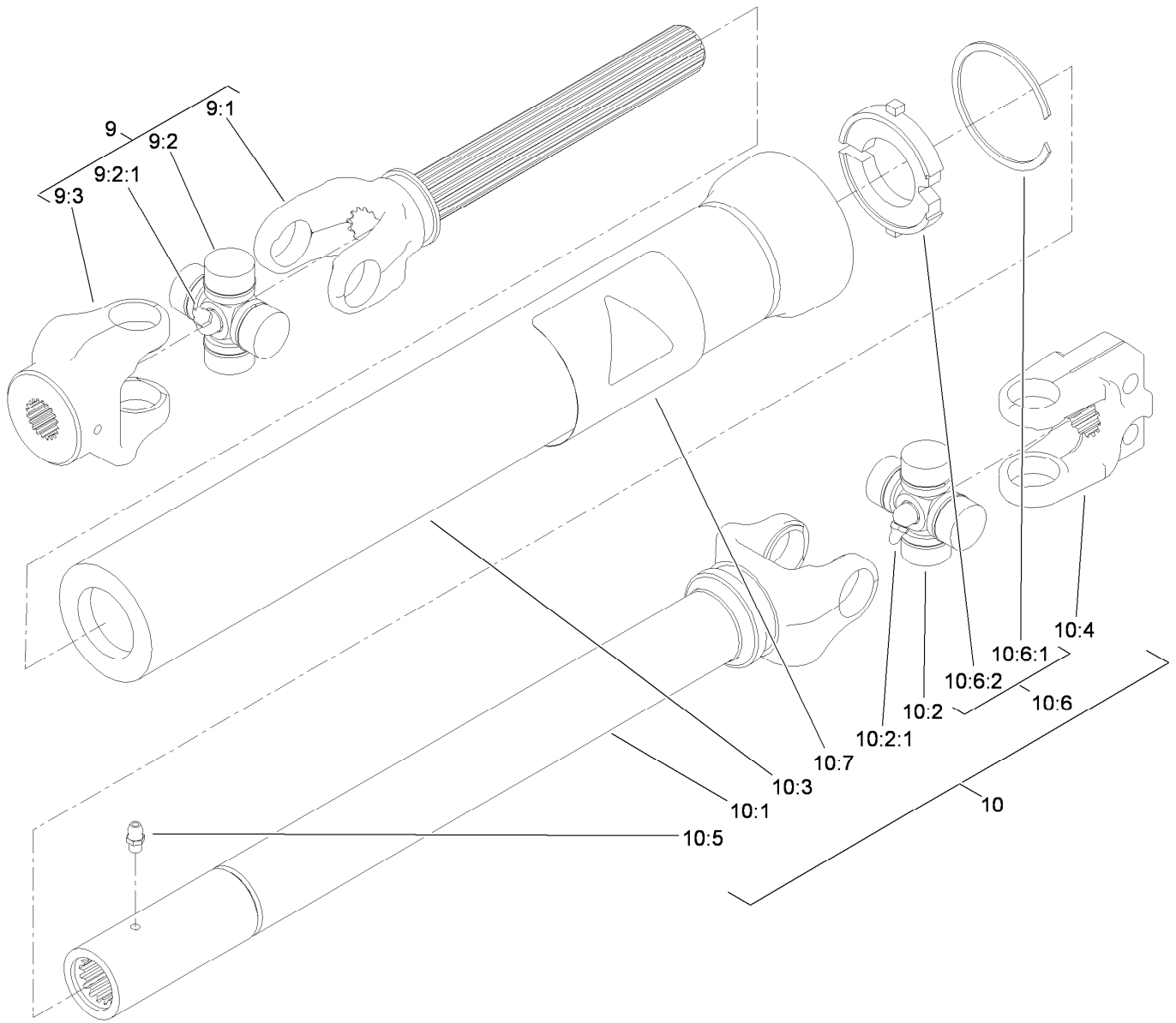
Bearing and Screen Assembly

<i>Ref.</i>	<i>Part Number</i>	<i>Qty.</i>	<i>Description</i>	<i>Ref.</i>	<i>Part Number</i>	<i>Qty.</i>	<i>Description</i>
1	98-5877-01	1	Screen	16:4	105-0709	1	Decal-Warning
2	100-4092-01	1	Mount-Spring	16:5	105-4886	1	Nut-Tinnerman
3	323-7	4	Screw-HH	17	3296-39	7	Nut-Lock, NI
4	100-4046-01	1	Mount-Pin	18	92-0625	1	Flat Pulley ASM
5	3272-18	2	Pin-Cotter	18:1	100-2587	2	Spacer-Bearing
6	3256-27	2	Washer-Flat	18:2	38-7820	2	Bearing-Ball
7	100-4045	1	Hinge-Rod	18:3	84-0920	1	Pulley-Flat
8	99-8441	1	Pin	19	104-0265	1	Spring-Extension
9	99-6531	1	Bracket-Lift Arm	20	323-13	1	Screw-HH
10	99-6530	1	Bracket-Lift	21	324-6	4	Screw-HH
11	323-2	1	Screw-HH	22	3296-48	4	Nut-Lock, NI
12	3256-35	1	Washer-Flat	23	94-8987	1	Bearing
14	110-9657	1	Idler Arm ASM	23:1	302-52	1	Fitting-Grease
14:2	256-244	2	Bushing	23:2	106-9662	1	Screw-Set, HSH
15	302-5	3	Fitting-Grease	24	323-6	6	Screw-HH
16	104-0270	1	Mount-Bearing	25	3253-21	9	Washer-Lock
16:2	99-4486	1	Decal-Warning	26	3256-24	14	Washer-Flat
16:3	58-6520	1	Decal-Grease				



Drive Shaft and Belt Assembly

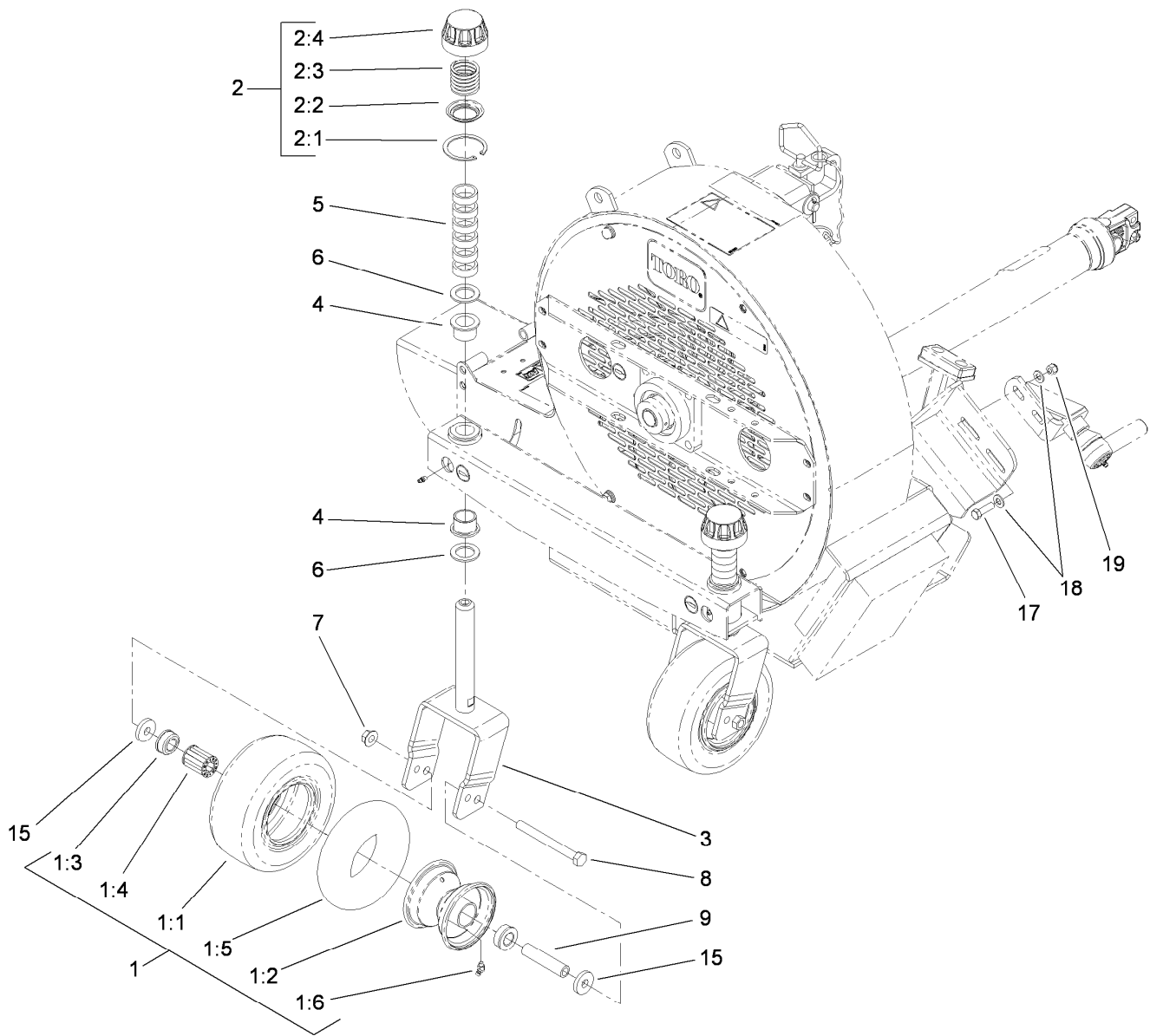
Ref.	Part Number	Qty.	Description	Ref.	Part Number	Qty.	Description
1	100-4084-01	1	Lift Arm ASM	18	100-4079	1	Cover-Belt
2	86-5350	1	Bumper-Rubber	18:2	98-3113	1	Decal-Caution
3	3253-3	2	Washer-Lock	18:3	99-4487	1	Decal-Grease
4	321-4	2	Screw-HH	18:4	58-6520	1	Decal-Grease
5	3256-26	2	Washer-Flat	18:5	105-0709	1	Decal-Warning
6	3217-9	2	Nut-HH	18:6	117-8339	5	Lanyard-3 Inch
7	100-4097-01	1	Stand ASM	18:7	117-8347	5	Nut-Shoulder
8	3296-29	2	Nut-Lock, NI	18:8	323-50	5	Bolt-TAP
9	322-7	2	Screw-HH	18:9	114439	5	Rivet-Pop
10	32121-34	1	Pin-Roll	18:10	3256-24	5	Washer-Flat
11	104-0264	1	Drive Shaft ASM	19	104-0309	1	V-Belt
12	93-4696	1	Pin-Hitch	20	94-8973	1	Shaft
13	95-0883	1	Pulley	22	110-9658	1	Tensioner ASM
14	95-0884	1	Hub	22:2	32120-8	2	Ring-Snap
14:1	3253-18	3	Washer-Lock	22:3	94-8978	2	Bearing
14:2	32104-96	3	Screw-HH	22:4	94-8972	1	Spacer-Bearing
15	104-0271	1	Pulley	25	71-5320	1	Washer-Support, Engine
16	95-0882	1	Hub	26	33114-020	1	Screw-HH
16:1	3253-18	3	Washer-Lock	27	3253-4	1	Washer-Lock
16:2	32104-96	3	Screw-HH	30	3256-24	4	Washer-Flat
17	67-7490	2	Key-Square				



Drive Shaft Assembly No. 104-0264

Ref.	Part Number	Qty.	Description	Ref.	Part Number	Qty.	Description
9	104-0253	1	Joint And Shaft Half ASM	10:2:1	62-3820	1	Fitting-Grease
9:1	104-0254	1	Yoke And Shaft	10:3	104-0257	1	Inner Guard
9:2	54-9180	2	U-Joint Kit	10:4	54-9040	1	Yoke-End
9:2:1	62-3820	1	Fitting-Grease	10:5	302-5	1	Fitting-Grease
9:3	62-3800	1	Yoke-End	10:6	93-9958	1	Nylon Repair Kit
10	104-0252	1	Joint And Tube Half ASM	10:6:1		1	Ring-Retaining ●
10:1	104-0255	1	Yoke, Tube, And Slip Sleeve	10:6:2		1	Bushing-Nylon ●
10:2	54-9180	2	U-Joint Kit	10:7	107-2915	1	Decal-Danger

● Not serviced separately



Castor Assembly

Ref.	Part Number	Qty.	Description	Ref.	Part Number	Qty.	Description
1	99-1268	2	Castor Wheel ASM	3	98-7068-01	2	Castor Fork ASM
1:1	93-9939	1	Tire	4	94-1291	4	Bushing
1:2	100-2348	1	Rim ASM	5	63-0070	12	Spacer
1:3	62-5580	2	Bearing-Outside	6	3-6781	4	Washer-Thrust
1:4	62-5570	1	Bearing-Roller	7	32128-23	2	Nut-HF
1:5	100-5832	1	Tube	8	325-19	2	Screw-HH
1:6	302-11	1	Fitting-Lube, 45 DEG	9	68-8980	2	Spanner-Tire
2	92-8862	2	HOC Cap ASM	15	70-8040	4	Washer
2:1	92-5581	1	Ring-Retaining	17	323-7	4	Screw-HH
2:2	92-5583	1	Washer-Cap	18	3256-24	8	Washer-Flat
2:3	92-5584	1	Spring-Compression	19	3296-39	4	Nut-Lock, NI
2:4	92-8861	1	Cap-HOC				

Notes:

Notes:

Notes:



Count on it.