



Count on it.

Parts Catalog

53cm Heavy-Duty

Recycler®/Rear Bagging Lawn Mower

Model No. 22177TE—Serial No. 31000001 and Up

Ordering Replacement Parts

To order replacement parts, please supply the part number, the quantity, and the description of each part desired.

Understanding Reference Numbers

Each identified part in an illustration has a reference number. The reference number for a part also appears in the parts list, along with other information about the part.

This catalog uses two special reference number formats, one to indicate parts in a service assembly and another to indicate the quantity of a given part in an illustration.

Service Assembly Reference Numbers

Parts in service assemblies have reference numbers in the form a:b. The a represents the reference number of the entire service assembly and the b represents a sequential number unique to each part within the service assembly.

For example, a wheel assembly might be identified by reference number 6, the tire by 6:1, the valve by 6:2, and the wheel by 6:3. When you order the assembly identified by reference number 6, you receive all parts identified by reference numbers 6:1, 6:2, and 6:3. However, you may also order any part individually. Reference numbers of this type appear in illustration and in parts lists.

Reference Numbers Indicating Quantity

In an illustration, if a reference number indicates more than one part, the reference number has the form nX y. The n represents the quantity of the part, the X is the multiplication symbol, and the y represents the reference number.

For example, in an illustration, the reference number 2X 37 means that two of the parts identified by reference number 37 are indicated.

List of Abbreviations

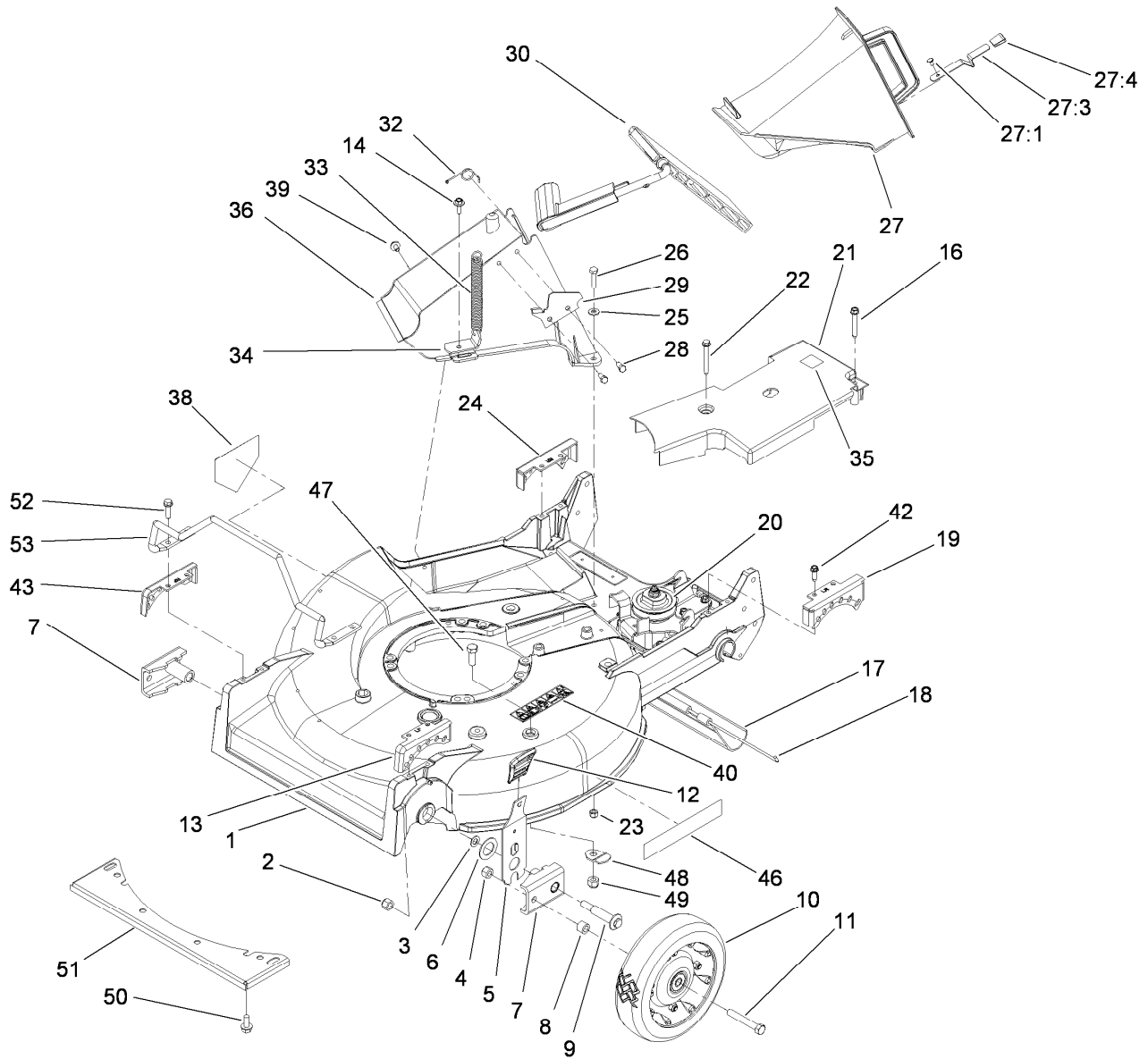
AR: as required
ASM: assembly
BBC: blade brake clutch
CARR: carriage
CCW: counter clock wise
CW: clockwise
DEG: degrees
ECM: electronic control module
EXT: external
FH: flat head
GA: gauge
HD: heavy-duty
HF: hex flange
HH: hex head
HHF: hex head flange
HHFTF: hex head flange thread forming
HJ: hex jam
HLH: hex lag head
HOC: height-of-cut

HSBH: hex socket button head
HSFH: hex socket flat head
HSH: hex socket head
HWH: hex washer head
HWHTF: hex washer head thread forming
HYD: hydraulic
LH: left hand
NI: nylon insert
NPTF: national pipe thread fine
PFH: phillips flat head
PPH: phillips pan head
PPHTF: phillips pan head thread forming
PRH: phillips round head
PTH: phillips truss head
PTO: power-take-off
RH: right hand
ROPS: roll-over protection system
RRB: rear roller brush

SFH: slotted fillister head
SHH: slotted hex head
SHWH: slotted hex washer head
SPH: slotted pan head
SQH: square head
SRH: slotted round head
STD: standard
TAP: self tapping
TTH: torx truss head

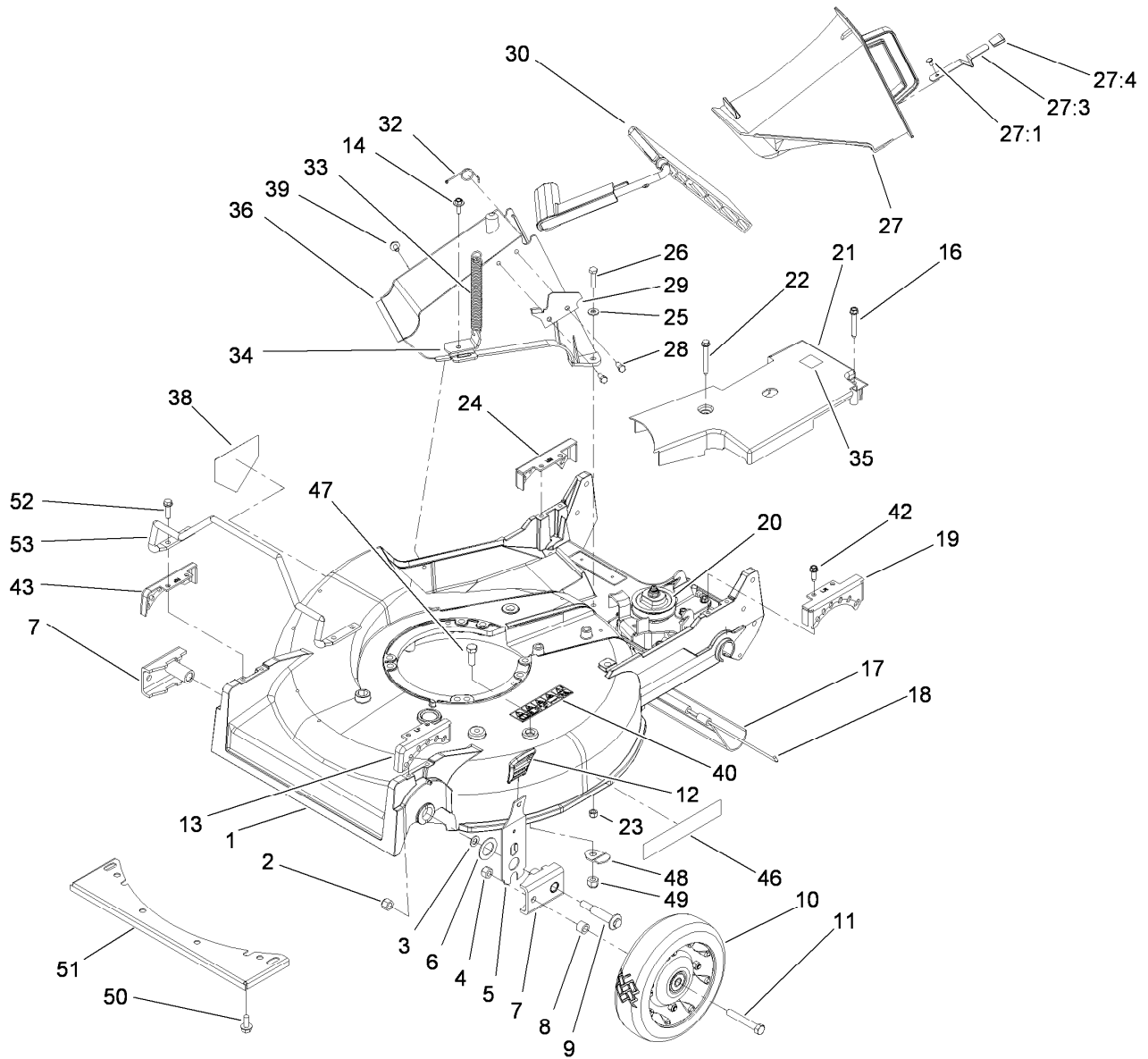
Contents

Housing, Chute and Wheel Assembly.....	4
Housing Assembly No. 98-7146	6
Front Wheel and Tire Assembly No. 100-2870	7
Gear Case Assembly No. 74-1860	8
Engine and Blade Assembly.....	9
Fuel Tank Assembly.....	11
Handle Assembly	12
Control Panel Assembly	13
Rear Drive and Wheel Assembly.....	14
Rear Wheel Assembly No. 100-2860	15
Grass Bag Assembly No. 106-0975	16
Cylinder and Crankcase Assembly	17
Piston and Crankshaft Assembly.....	18
Valve and Camshaft Assembly.....	19
Lubrication Equipment Assembly	20
Cooling Equipment Assembly	21
Electrical Equipment Assembly	22
Control Equipment Assembly	23
Carburetor Assembly	24
Air Filter and Muffler Assembly.....	25
Starter Assembly	26



Housing, Chute and Wheel Assembly

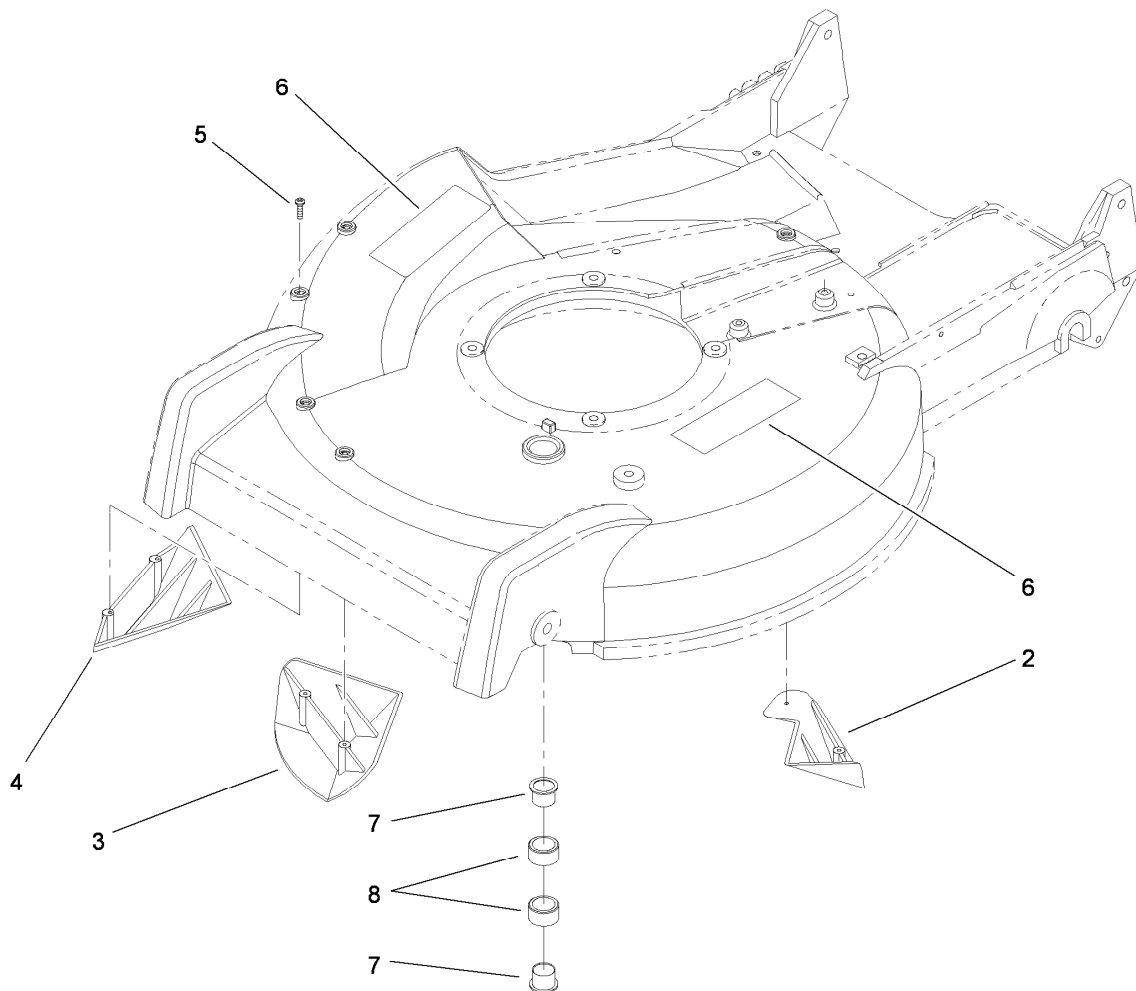
Ref.	Part Number	Qty.	Description	Ref.	Part Number	Qty.	Description
1	98-7146	1	Housing	23	3296-42	2	Nut-Lock, NI
2	3296-6	2	Nut-Lock	24	49-8750	1	Quadrant-Rear, RH
3	40-1940	2	Washer	25	3256-22	2	Washer-Flat
4	32152-2	2	Nut-Lock, Cone	26	321-8	2	Screw-HH
5	115-0980	2	Front Spring Arm ASM	27	77-0502	1	Discharge Plug ASM
6	257-3	2	Washer-Thrust	27:1	3295-35	1	Rivet-Head, Flat
7	61-8300	2	Arm-Pivot, Front	27:3	76-4640	1	Latch-Plug, Discharge
8	52-2480	2	Spacer-Wheel	27:4	76-4650	1	Grip-Latch
9	114-3468	2	Screw-Shoulder	28	46-8090	2	Screw-Plastite
10	100-2870	1	Wheel And Tire ASM	29	93-3154	1	Latch-Plate
11	323-12	2	Screw-HH	30	93-7351	1	Discharge Door ASM
12	110-0549	2	Knob-HOC	32	80-3770	1	Retainer-Door
13	49-8760	1	Quadrant-Front, LH	33	76-4660	1	Spring-Door
14	46-6811	1	Screw-HWH	34	71-9350	1	Bracket-Spring
16	92-1616	1	Screw-HWHTF	35	93-6664	1	Decal-Grease
17	112-9989	1	Shield-Trailing	36	82-9151	1	Tunnel-Discharge
18	33-3208	1	Rod-Shield	38	112-8760	1	Decal-Danger
19	49-8740	1	Quadrant-Rear, LH	39	46-6810	1	Screw And Washer ASM
20	74-1860	1	Gear Case ASM	40	110-4978	1	Decal-Danger
21	74-1770	1	Cover-Belt	42	49-2040	4	Screw-HWHTF
22	37-7260	1	Screw-HHFTF	43	49-8770	1	Quadrant-Front, RH



Housing, Chute and Wheel Assembly (continued)

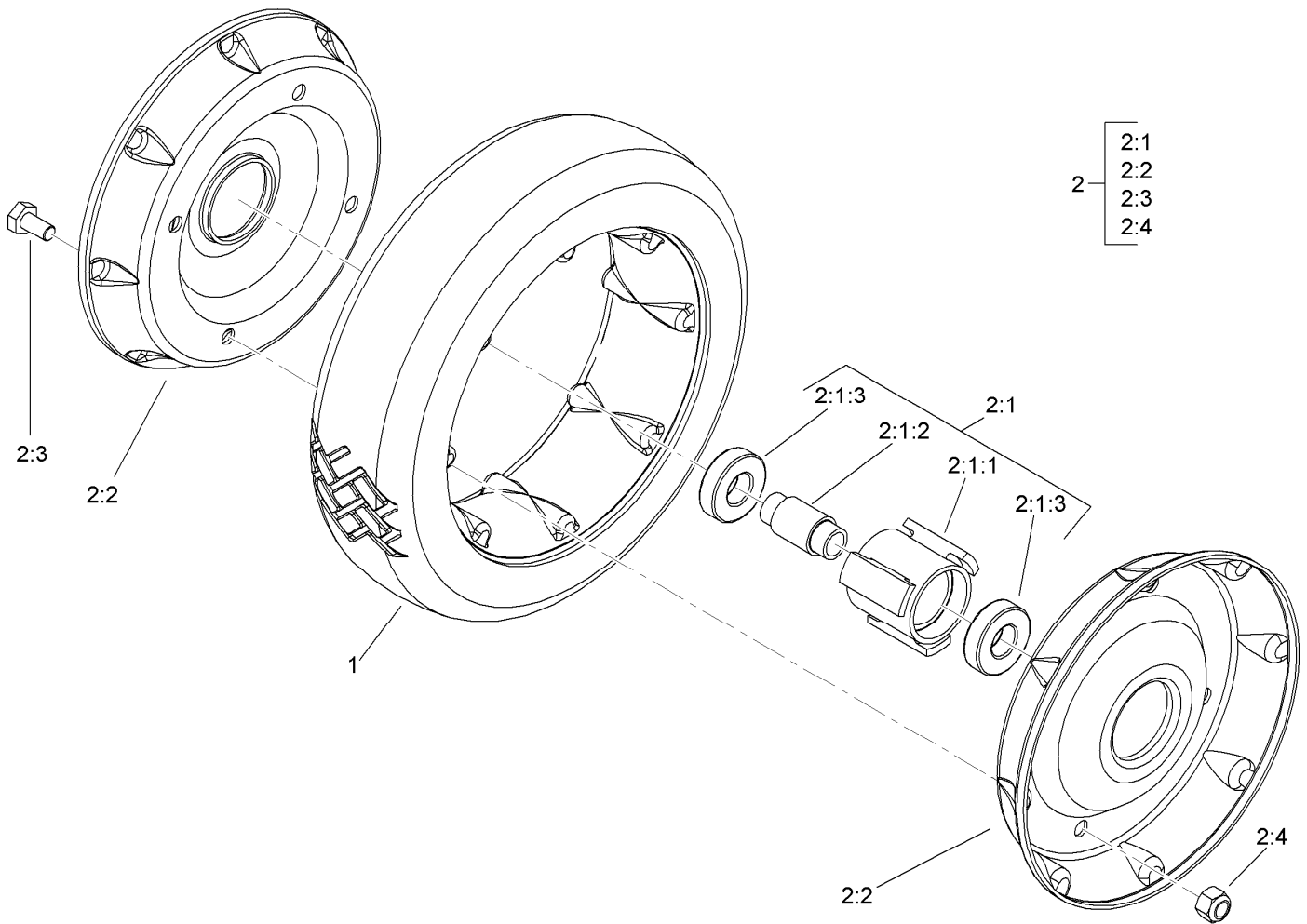
<i>Ref.</i>	<i>Part Number</i>	<i>Qty.</i>	<i>Description</i>
46	106-0689	1	Decal
47	323-6	3	Screw-HH
48	84-8930	2	Shield-Retainer
49	3296-39	3	Nut-Lock, NI

<i>Ref.</i>	<i>Part Number</i>	<i>Qty.</i>	<i>Description</i>
50	32144-70	4	Screw-HWHTF
51	46-5400-03	1	Shield
52	32144-86	4	Screw-HWHTF
53	99-6722	1	Guard-Engine



Housing Assembly No. 98-7146

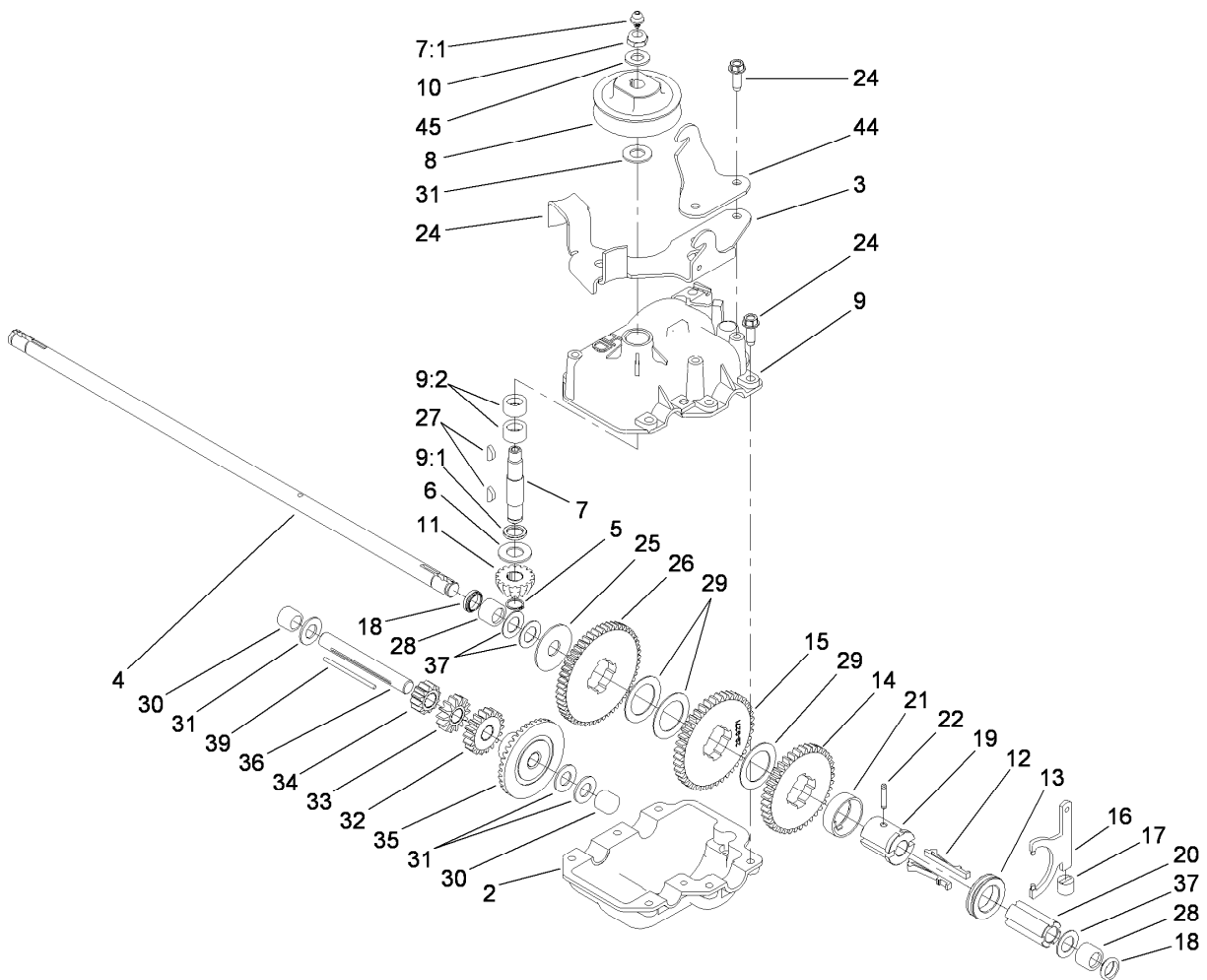
<i>Ref.</i>	<i>Part Number</i>	<i>Qty.</i>	<i>Description</i>
2	92-1750	1	Kicker-Rear
3	92-1720	1	Kicker-Front
4	92-1730	1	Kicker-RH
5	32144-111	6	Screw-PPH
6	110-4978	2	Decal-Danger
7	2410-72	2	Caplug
8	68-9780	2	Bearing



Front Wheel and Tire Assembly No. 100-2870

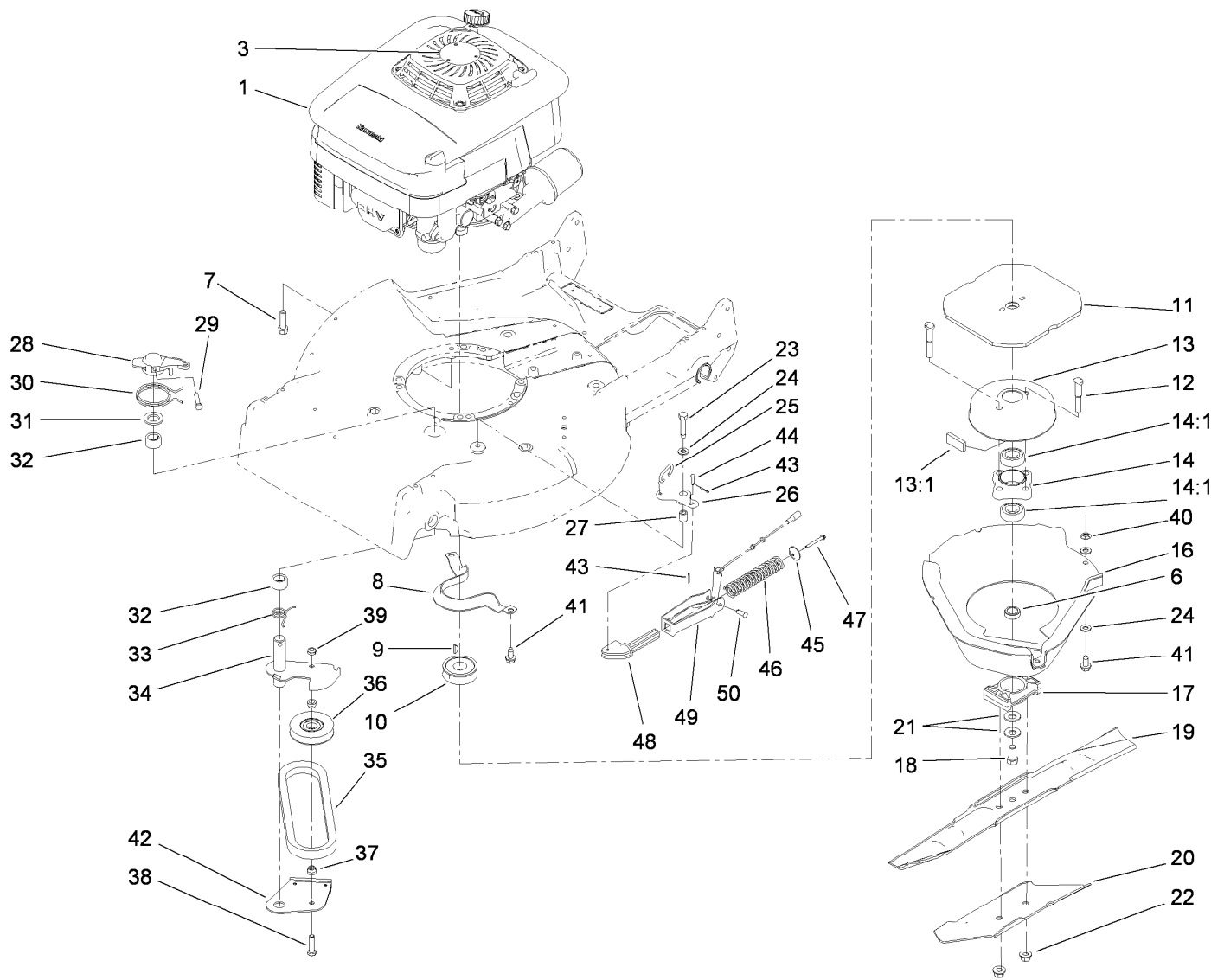
Ref.	Part Number	Qty.	Description
1	53-7740	1	Tire
2		1	Wheel ASM ●
2:1		1	Hub And Bearing ASM ●
2:1:1	52-2410	1	Hub-Bearing
2:1:2	52-2440	1	Spacer-Bearing
2:1:3	52-2450	2	Bearing-Wheel
2:2	53-7780-06	2	Plate-Wheel, Half
2:3	321-2	4	Screw-HH
2:4	3296-42	4	Nut-Lock, NI

● Not serviced separately



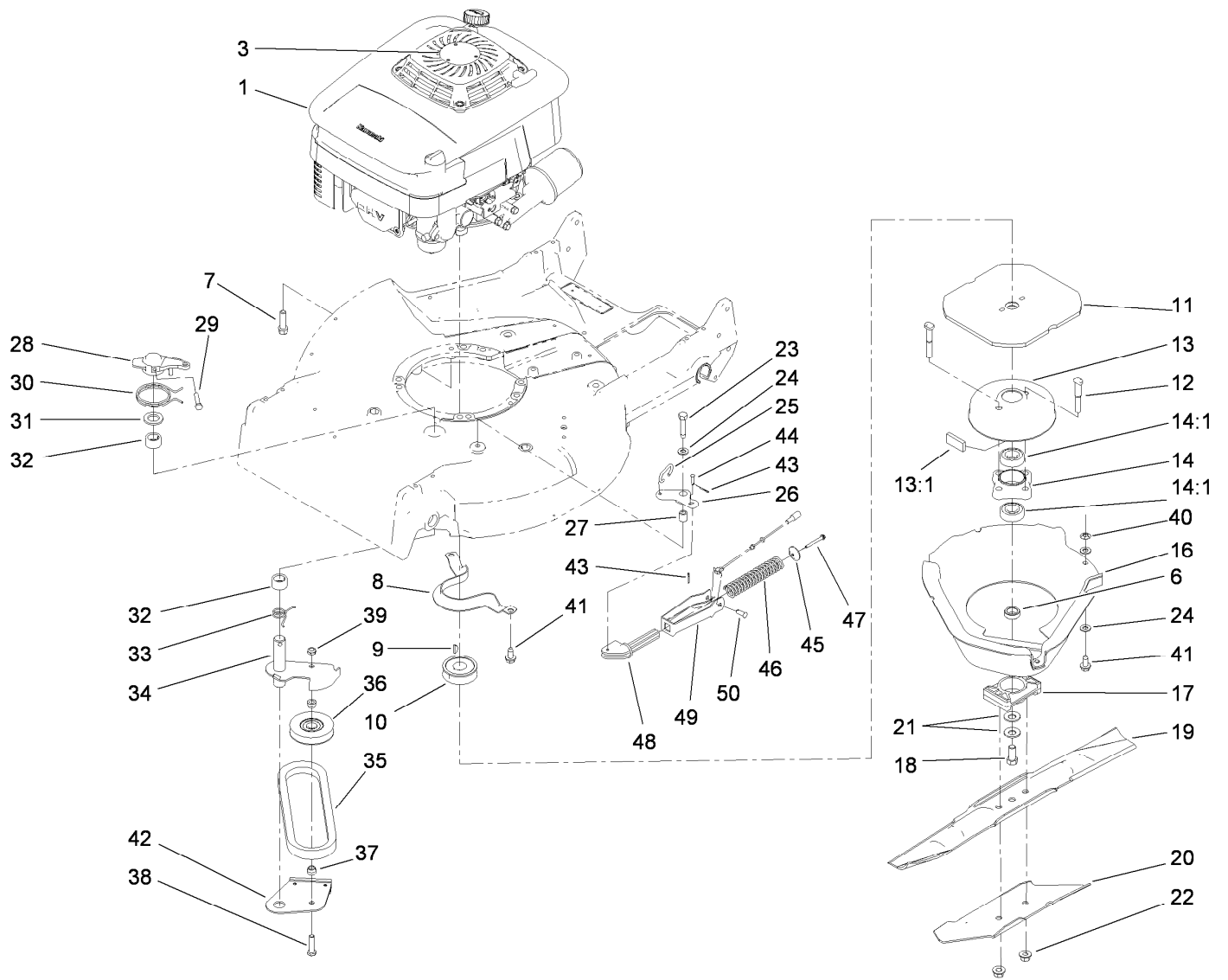
Gear Case Assembly No. 74-1860

<i>Ref.</i>	<i>Part Number</i>	<i>Qty.</i>	<i>Description</i>	<i>Ref.</i>	<i>Part Number</i>	<i>Qty.</i>	<i>Description</i>
2	74-1920	1	Case-Gear, Lower	20	39-6720	1	Sleeve
3	49-8461-03	1	Bracket-Guide, Belt	21	55-8020	1	Retainer-Key
4	74-1890	1	Shaft-Output	22	3285-19	1	Pin-Groove
5	32151-57	1	Ring-Retaining	24	49-2040	8	Screw-HWHTF
6	47-2910	1	Washer-Thrust	25	29-9690	1	Washer
7	13-5149	1	Input Shaft ASM	26	46-3560	1	Gear
7:1	302-63	1	Zerk	27	3257-1	2	Key-Woodruff
8	39-6740	1	Pulley	28	117-3500	2	Bearing-Caged Needle Roller
9	13-9739	1	Upper Gearcase ASM	29	36-4770	3	Washer
9:1	47-7260	1	Seal	30	252-103	2	Bearing-Closed
9:2	47-7270	2	Bearing	31	36-4792	4	Washer-Thrust
10	3296-5	1	Nut-Lock	32	39-6650	1	Gear-18T
11	39-6660	1	Pinion-Bevel	33	46-3550	1	Gear-14T
12	29-9330	2	Key-Shift	34	46-3540	1	Gear-12T
13	29-9340	1	Collar-Shift	35	74-1760	1	Gear-Bevel
14	42-4740	1	Gear-38T	36	53-7950	1	Shaft-Intermediate
15	29-9271	1	Gear-42T	37	36-4780	3	Washer-Plain
16	60-8870	1	Yoke-Shift	39	39-7842	1	Key
17	29-9570	1	Bushing-Yoke	44	74-1750-03	1	Bracket-Engage, Traction
18	47-6730	2	Seal-Oil	45	3256-45	1	Washer-Flat
19	55-8010	1	Sleeve-Gear				



Engine and Blade Assembly

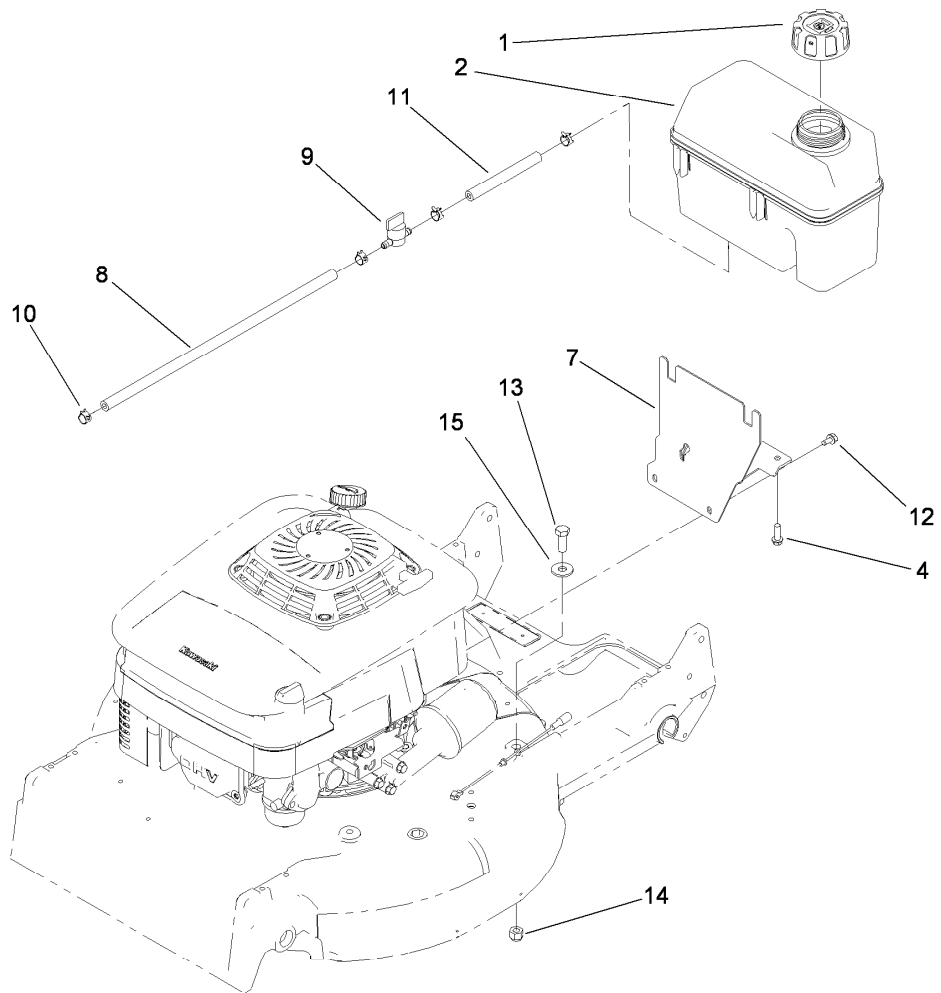
Ref.	Part Number	Qty.	Description	Ref.	Part Number	Qty.	Description
1	106-0845	1	Engine ASM	24	3256-23	3	Washer-Flat
3	110-0520	1	Decal	25	49-2810	1	Link-Control
6	107-4058	1	Spacer-Shaft, Output	26	49-7960	1	Bellcrank
7	95-1727	4	Screw-Taptite	27	49-7950	1	Sleeve-Bellcrank
8	66-0570-03	1	Bracket-Guide, Belt	28	49-2820	1	Lever
9	3257-17	1	Key-Woodruff	29	32104-96	1	Screw-HH
10	56-6180	1	Pulley-Driver	30	49-7970	1	Spring-Torsion
11	56-6160-03	1	Flywheel-BBC	31	70-1160	1	Washer
12	42-3190	2	Bolt-Blade	32	68-9780	2	Bearing
13	94-9431	1	Brake Drum ASM	33	85-6880	1	Spring-Torsion
13:1	52-3480	2	Dampener-Vibration	34	84-9130	1	Arm-Idler
14	42-6890	1	Hub ASM	35	42-0884	1	V-Belt
14:1	100-1048	2	Bearing-Ball	36	117-5299	1	Pulley-Idler
16	46-5693	1	Shield	37	46-5631	2	Spacer-Pulley, Idler
17	107-4275	1	Spacer-Blade	38	322-6	1	Screw-HH
18	3212-4	1	Screw-HH	39	3296-47	1	Nut-Lock, NI
19	91-2256-03	1	Blade-21 Inch	40	117-2749	1	Nut-Push
20	91-2255-03	1	Stiffener-Blade	41	32144-70	3	Screw-HWHTF
21	1-603610	2	Washer-Spring	42	84-9180	1	Brake Plate ASM
22	54-9190	2	Nut-Lock	43	3272-1	2	Pin-Cotter
23	32104-107	1	Screw-HH	44	84-9050	1	Pin-Spring



Engine and Blade Assembly (continued)

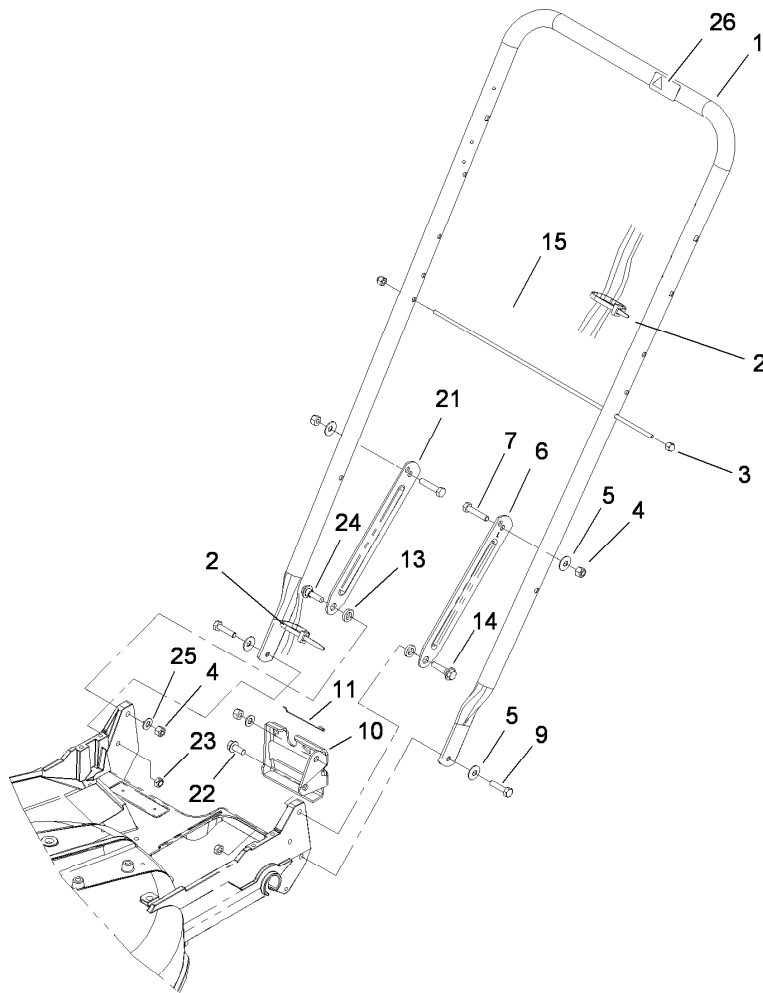
<i>Ref.</i>	<i>Part Number</i>	<i>Qty.</i>	<i>Description</i>
45	65-5280	1	Retainer-Spring
46	84-9100	1	Spring
47	46-7040	1	Screw-HWHTF

<i>Ref.</i>	<i>Part Number</i>	<i>Qty.</i>	<i>Description</i>
48	106-0842	1	Guide-Spring
49	107-4087-03	1	Bracket-Spring
50	84-9040	1	Pin-Cable



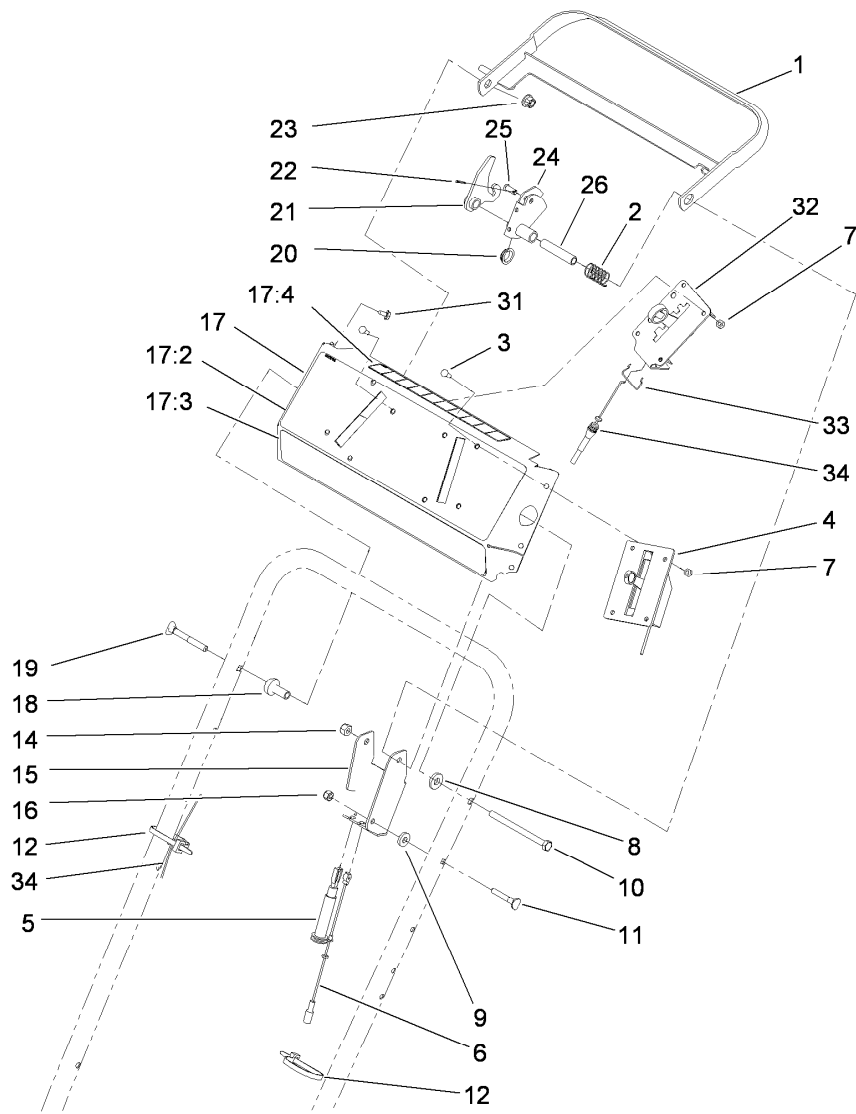
Fuel Tank Assembly

<i>Ref.</i>	<i>Part Number</i>	<i>Qty.</i>	<i>Description</i>
1	93-7198	1	Gas Cap ASM
2	117-3510	1	Fuel Tank ASM
4	46-8091	2	Screw-HWH
7	115-0954-03	1	Tank Mount ASM
8	109-0296	1	Hose-Fuel
9	1-603770	1	Valve-Fuel
10	2412-98	4	Clamp
11	109-0650	1	Hose-Fuel
12	104-2628	3	Screw-HWH
13	323-7	1	Screw-HH
14	3296-39	1	Nut-Lock, NI
15	80-6990	1	Washer-Hardened



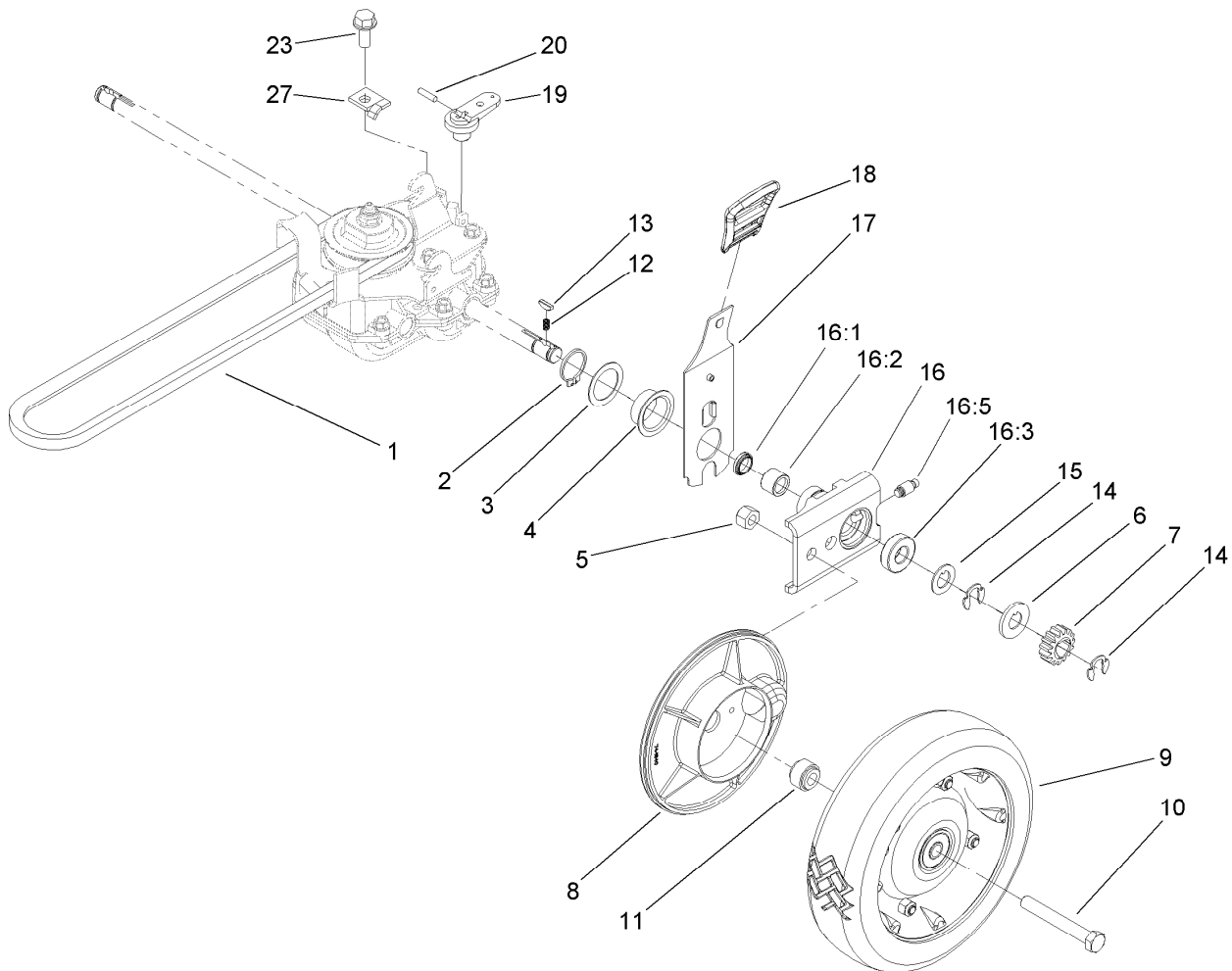
Handle Assembly

<i>Ref.</i>	<i>Part Number</i>	<i>Qty.</i>	<i>Description</i>
1	98-2385-03	1	Handle
2	3290-378	2	Tie-Cable
3	32111-7	2	Nut-Cap
4	3296-29	4	Nut-Lock, NI
5	3290-456	4	Washer-Belleville
6	100-3298-03	1	Latch-Handle, LH
7	322-7	2	Screw-HH
9	322-6	2	Screw-HH
10	74-1741	1	Bracket-Adjustment, Traction
11	46-7030	1	Retainer-Cable
13	3-3287	2	Spacer-Latch, Handle
14	27-7210	1	Screw-Shoulder
15	48-2810	1	Rod-Support, Bag
21	100-3297-03	1	Latch-Handle, RH
22	32144-70	1	Screw-HWHTF
23	3296-47	2	Nut-Lock, NI
24	27-7211	1	Screw-Shoulder
25	3256-23	2	Washer-Flat
26	98-4387	1	Decal-Protection, Ear



Control Panel Assembly

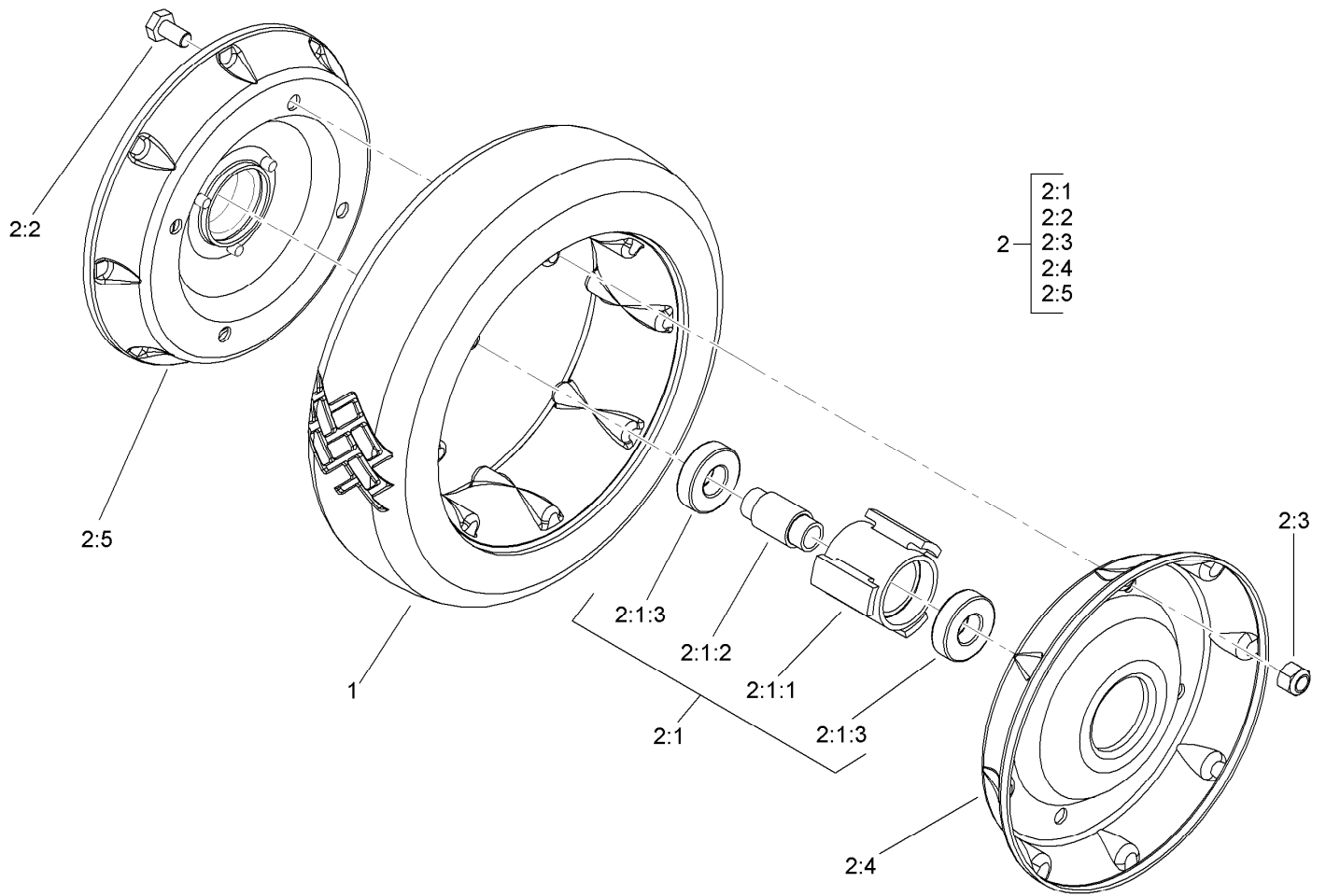
<i>Ref.</i>	<i>Part Number</i>	<i>Qty.</i>	<i>Description</i>	<i>Ref.</i>	<i>Part Number</i>	<i>Qty.</i>	<i>Description</i>
1	84-8940-03	1	Bar-Control	17:2	98-2006	1	Decal-Panel, Control
2	85-6750	1	Spring-Control	17:3	106-0771	1	Decal-Panel
3	3250-12	8	Screw-PPH	17:4	93-6655	1	Decal-Panel, Rear
4	117-3543	1	Control-Throttle	18	49-1631	1	Spacer-Support
5	84-9120	1	Cable-Traction	19	17-9427	1	Screw
6	84-9110	1	Cable-Clutch	20	86-9320	1	Bushing-Flange
7	3296-2	8	Nut-Lock, NI	21	84-9000	1	Lever-Traction
8	71-9310	1	Spacer	22	3272-1	1	Pin-Cotter
9	71-9320	1	Spacer	23	3296-58	1	Nut-Lock, NI
10	322-19	1	Screw-HH	24	84-8990	1	Lever-BBC
11	46-6430	1	Screw-Handle	25	84-9040	1	Pin-Cable
12	3290-378	2	Tie-Cable	26	84-9030	1	Spacer-Bracket, Control
14	3296-29	1	Nut-Lock, NI	31	32104-76	6	Screw
15	92-1778-03	1	Bracket-Control	32	99-2542	1	Control-Shift
16	3296-42	1	Nut-Lock, NI	33	85-6780	1	Retainer-Cable, Throttle
17	99-8137	1	Panel ASM	34	99-2541	1	Cable-Shift



Rear Drive and Wheel Assembly

<i>Ref.</i>	<i>Part Number</i>	<i>Qty.</i>	<i>Description</i>	<i>Ref.</i>	<i>Part Number</i>	<i>Qty.</i>	<i>Description</i>
1	36-8070	1	V-Belt	15	49-7700	2	Washer-Thrust, Outer
2	32151-36	2	Ring-Retaining	16	74-1851	2	Pivot Arm ASM
3	74-1810	2	Washer	16:1	47-6730	1	Seal-Oil
4	48-2170	2	Cap-End	16:2	117-3500	1	Bearing-Caged Needle Roller
5	32152-2	2	Nut-Lock, Cone	16:3	52-2450	1	Bearing-Wheel
6	62-3830	2	Washer-Thrust, Outer	16:5	92-6316	1	Zerk
7	39-9160	2	Gear-Pinion	17	115-0981	2	Rear Spring Arm ASM
8	74-1640	2	Cover-Wheel	18	110-0549	2	Knob-HOC
9	100-2860	2	Wheel And Tire ASM	19	29-9560	1	Lever-Shift
10	323-13	2	Screw-HH	20	32121-99	1	Pin-Coil
11	74-1650	2	Spacer-Cover, Wheel	23	32144-70	1	Screw-HWHTF
12	39-9650	2	Spring-Compression	27	62-3720	1	Clamp-Cable
13	612066	2	Key	99	106-0975	1	Grass Bag ASM ●
14	32151-68	4	Ring-Retaining				

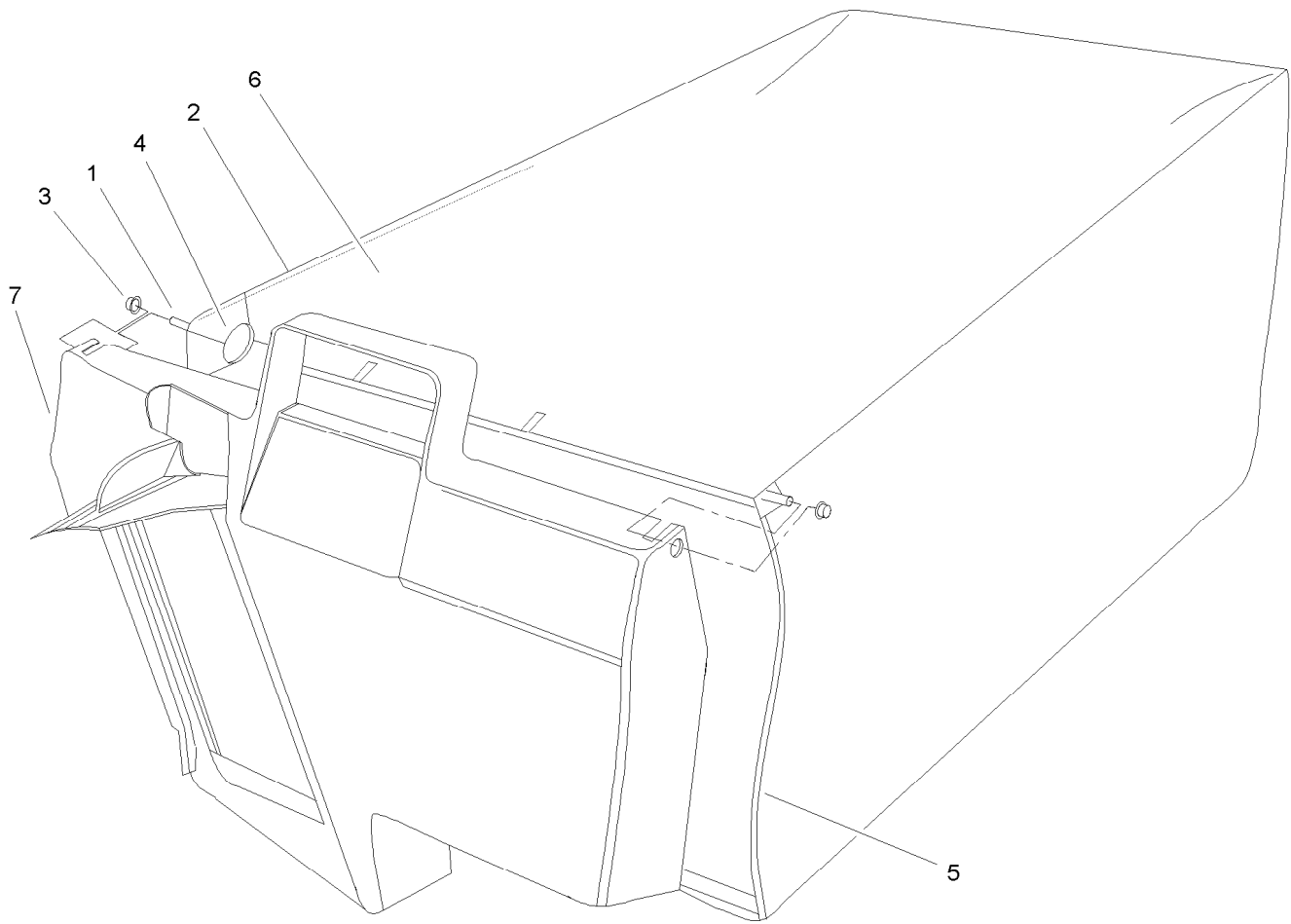
● Not illustrated



Rear Wheel Assembly No. 100-2860

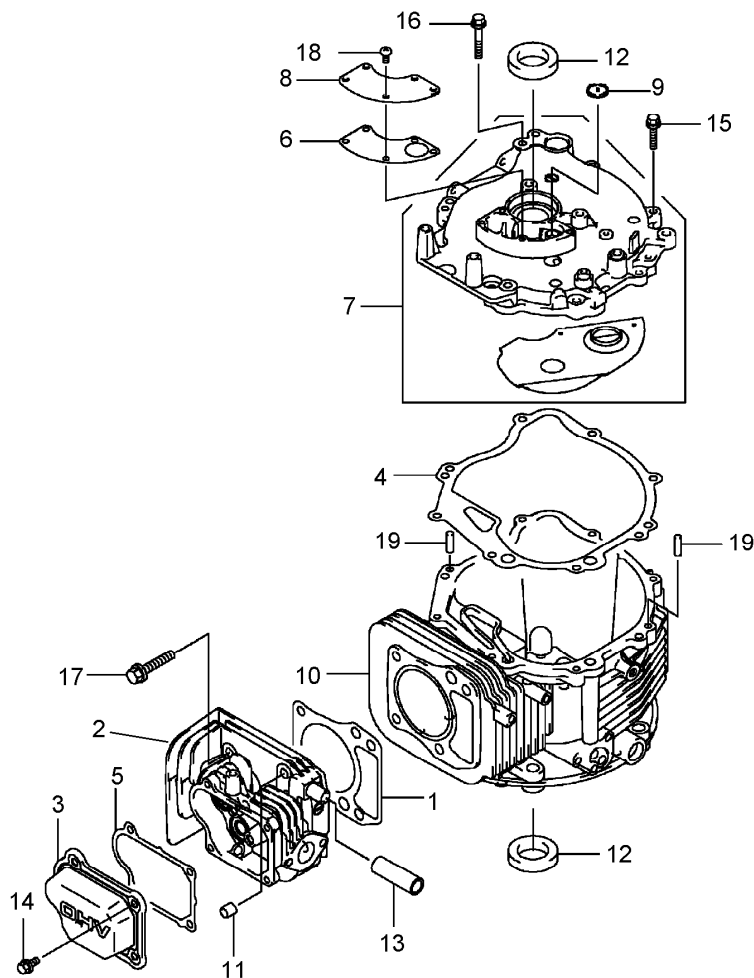
Ref.	Part Number	Qty.	Description
1	53-7740	1	Tire
2		1	Wheel ASM ●
2:1		1	Hub And Bearing ASM ●
2:1:1	52-2410	1	Hub-Bearing
2:1:2	52-2440	1	Spacer-Bearing
2:1:3	52-2450	2	Bearing-Wheel
2:2	321-2	4	Screw-HH
2:3	3296-42	4	Nut-Lock, NI
2:4	53-7780-06	1	Plate-Wheel, Half
2:5	92-4957-06	1	Wheel Half And Gear ASM

● Not serviced separately



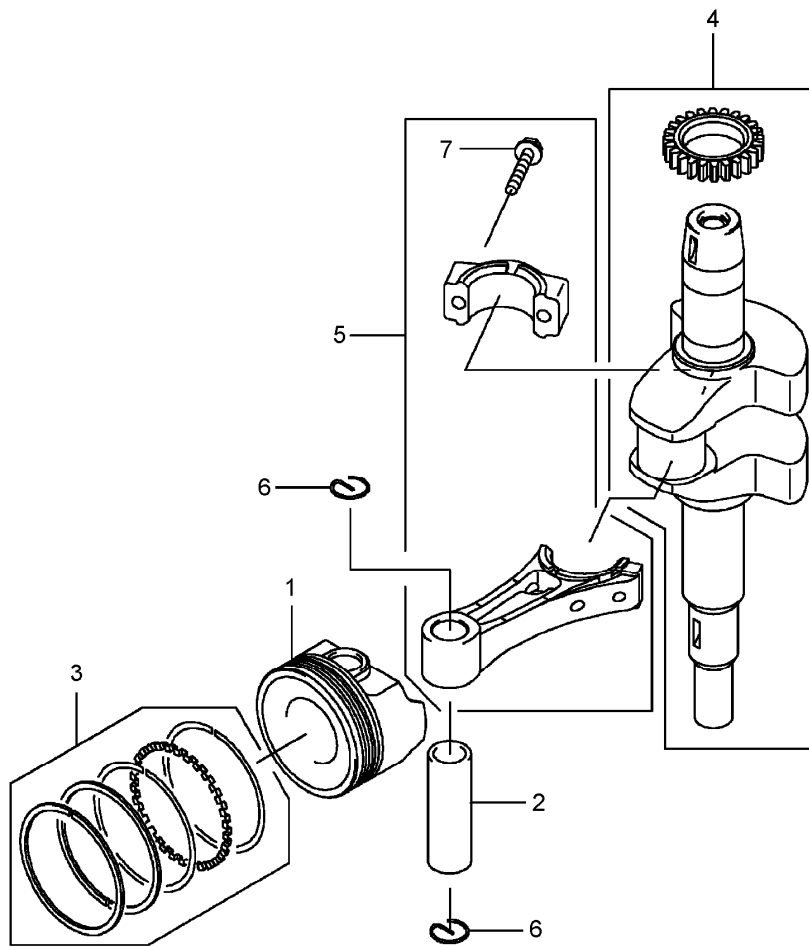
Grass Bag Assembly No. 106-0975

<i>Ref.</i>	<i>Part Number</i>	<i>Qty.</i>	<i>Description</i>
1	33-4820	1	Hinge-Door, Bag
2	42-4030	1	Frame-Bag, Upper
3	3290-422	2	Nut-Push
4	36-6910	2	Spring
5	42-4020	1	Frame-Bag
6	106-0926	1	Bag-Grass
7	48-2840	1	Door-Bag, Grass



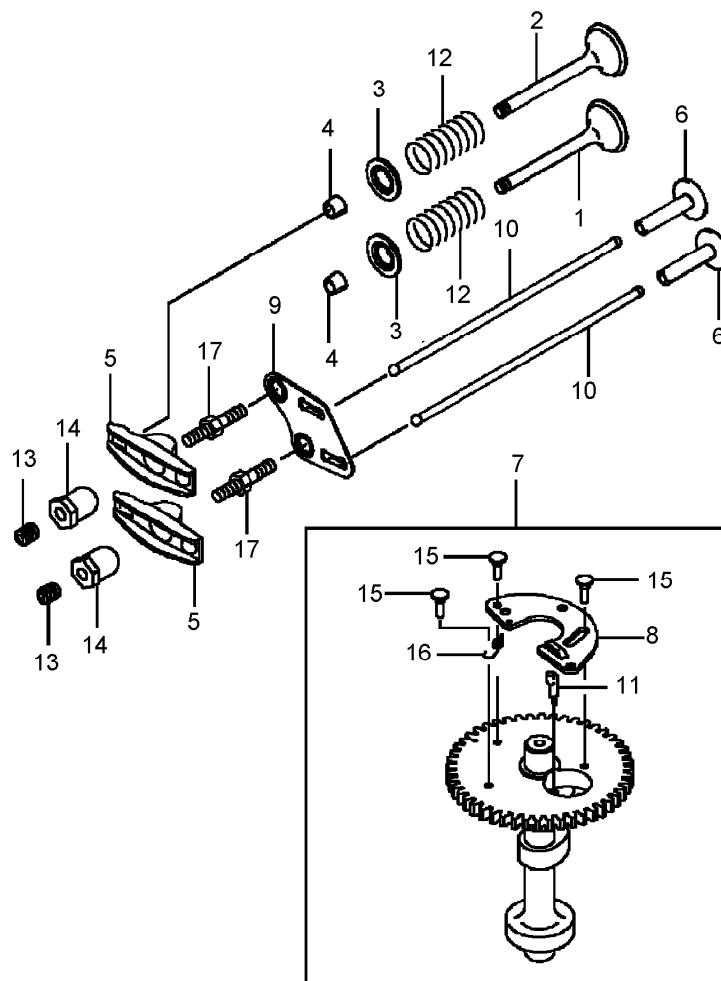
Cylinder and Crankcase Assembly

<i>Ref.</i>	<i>Part Number</i>	<i>Qty.</i>	<i>Description</i>
1	108-2627	1	Gasket-Head
2	108-2501	1	Head-Cylinder
3	108-2502	1	Case-Rocker
4	108-2503	1	Gasket
5	108-2504	1	Gasket-Case, Rocker
6	108-2505	1	Gasket-Breather
7	108-2506	1	Cover
8	108-2507	1	Cover-Breather
9	108-2508	1	Valve-Breather
10	108-2509	1	Crankcase-Complete
11	108-2510	2	Pin
12	108-2511	2	Seal-Oil, Tc (28-44-9)
13	108-2512	1	Tube (12X16X49)
14	100-2804	4	Bolt-Flanged
15	100-2610	7	Bolt-Flanged (6X25)
16	108-2513	1	Bolt-Flange
17	108-2514	4	Bolt-Flange
18	100-2763	5	Screw-Pan
19	108-2515	2	Pin-Dowel (6X12)



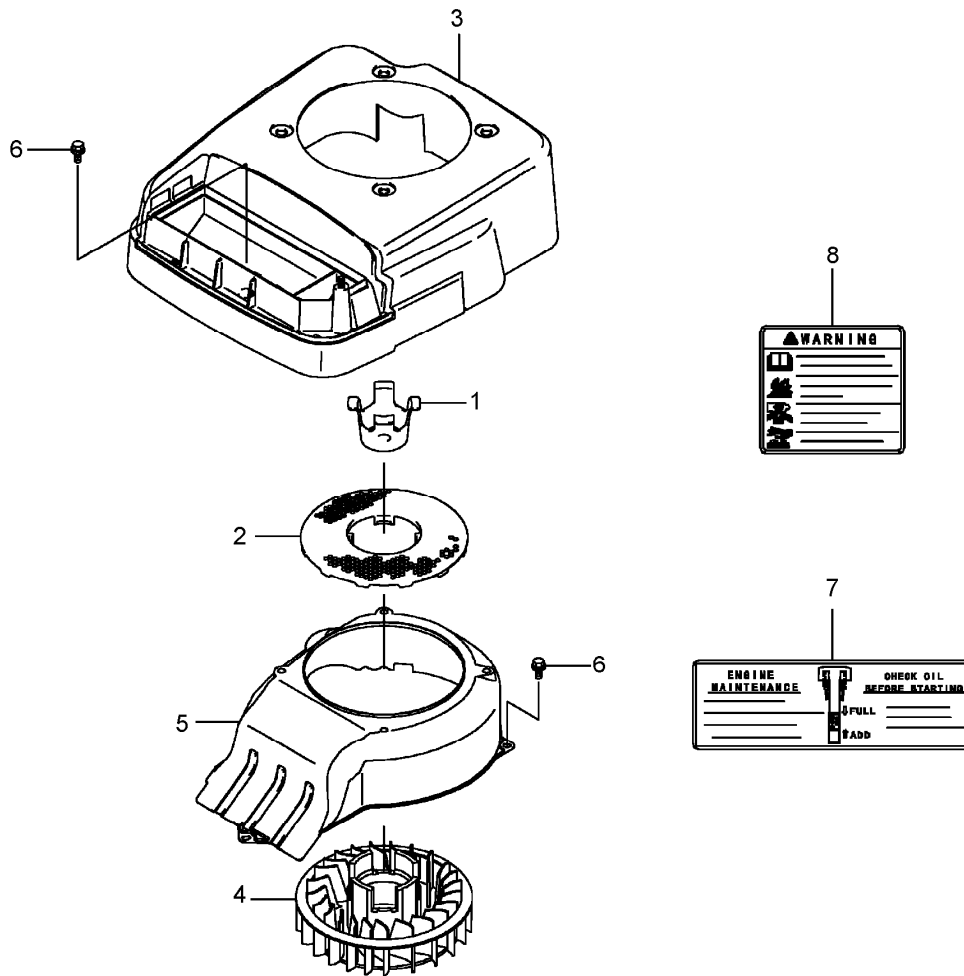
Piston and Crankshaft Assembly

<i>Ref.</i>	<i>Part Number</i>	<i>Qty.</i>	<i>Description</i>
1	108-2516	1	Piston-Engine
2	108-2517	1	Pin-Piston
3	108-2518	1	Ring-Set, Piston
4	108-2626	1	Crankshaft-Comp (BBC)
5	108-2520	1	Connecting Rod ASM
6	108-2521	2	Ring-Snap
7	108-2522	2	Bolt-Flanged (6X30)



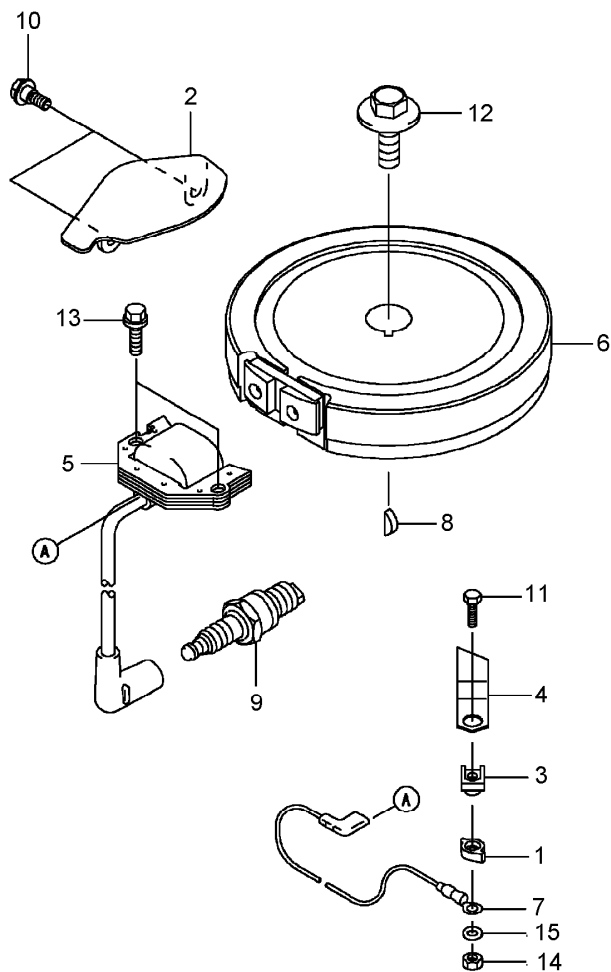
Valve and Camshaft Assembly

<i>Ref.</i>	<i>Part Number</i>	<i>Qty.</i>	<i>Description</i>
1	108-2523	1	Valve-Intake
2	108-2524	1	Valve-Exhaust
3	108-2525	2	Retainer-Spring, Valve
4	95-9744	4	Collet
5	108-2526	2	Arm-Rocker
6	108-2527	2	Tappet
7	108-2528	1	Camshaft Valve ASM
8	108-2529	1	Weight
9	108-2530	1	Guide
10	108-2531	2	Rod-Push
11	108-2532	1	Arm
12	108-2533	2	Spring-Valve, Engine
13	108-2534	2	Screw
14	93-8534	2	Nut
15	108-2535	3	Pin
16	108-2536	1	Spring
17	108-2537	2	Bolt



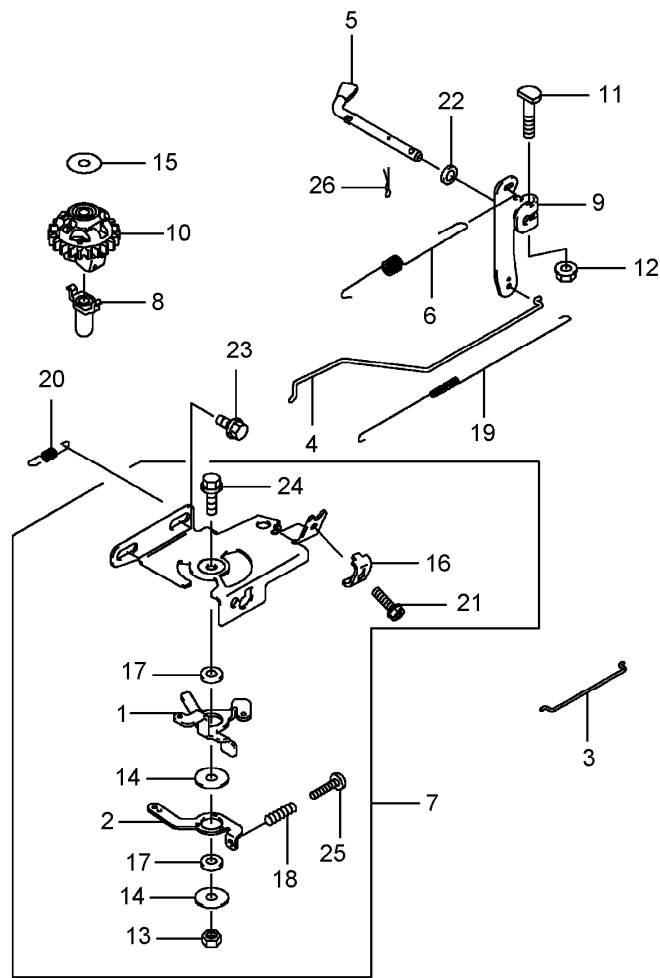
Cooling Equipment Assembly

<i>Ref.</i>	<i>Part Number</i>	<i>Qty.</i>	<i>Description</i>
1	108-2548	1	Bracket-Fan
2	108-2549	1	Screen
3	108-2550	1	Cover
4	108-2551	1	Fan
5	108-2552	1	Housing-Fan
6	100-2804	2	Bolt-Flanged
7	108-2624	1	Label-Manual
8	108-2625	1	Label-Warning



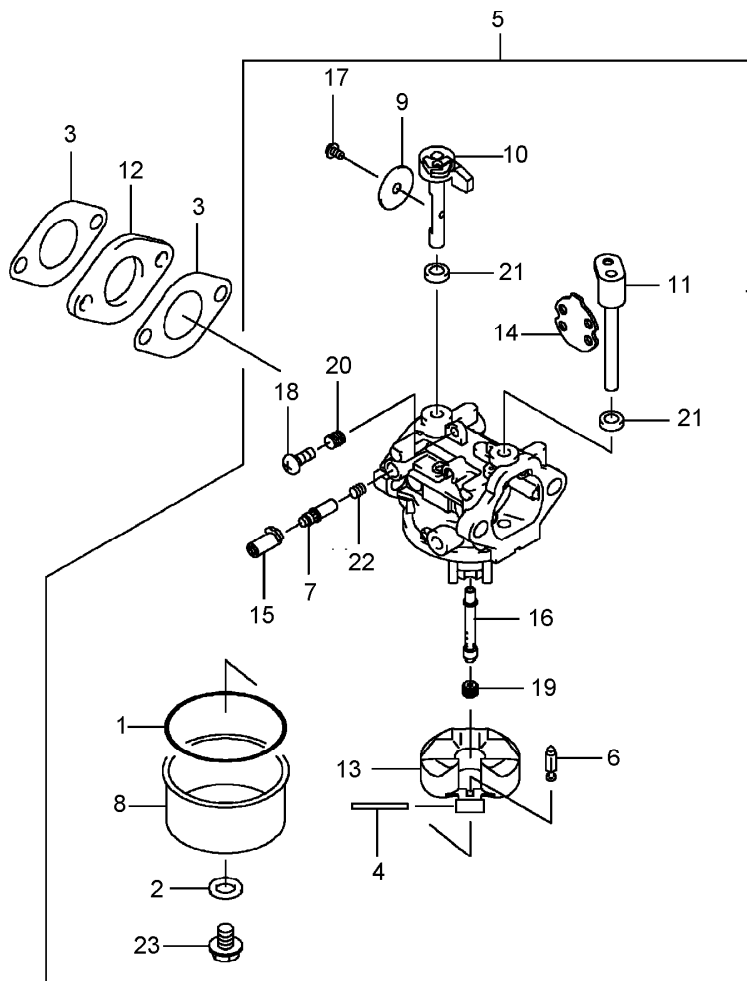
Electrical Equipment Assembly

<i>Ref.</i>	<i>Part Number</i>	<i>Qty.</i>	<i>Description</i>
1	100-2652	1	Cover
2	108-2553	1	Cover
3	100-2653	1	Insulator
4	100-2796	1	Terminal
5	108-2554	1	Coil Ignition ASM
6	108-2555	1	Flywheel
7	108-2556	1	Wire-Lead
8	93-8571	1	Key
9	KW10676	1	Spark Plug
10	108-2544	2	Bolt
11	108-2558	1	Bolt
12	108-2559	1	Bolt (12X30)
13	95-9893	2	Bolt-Flanged (6X20)
14	100-2668	1	Nut-Hex (4Mm)
15	100-2798	1	Washer-Plain



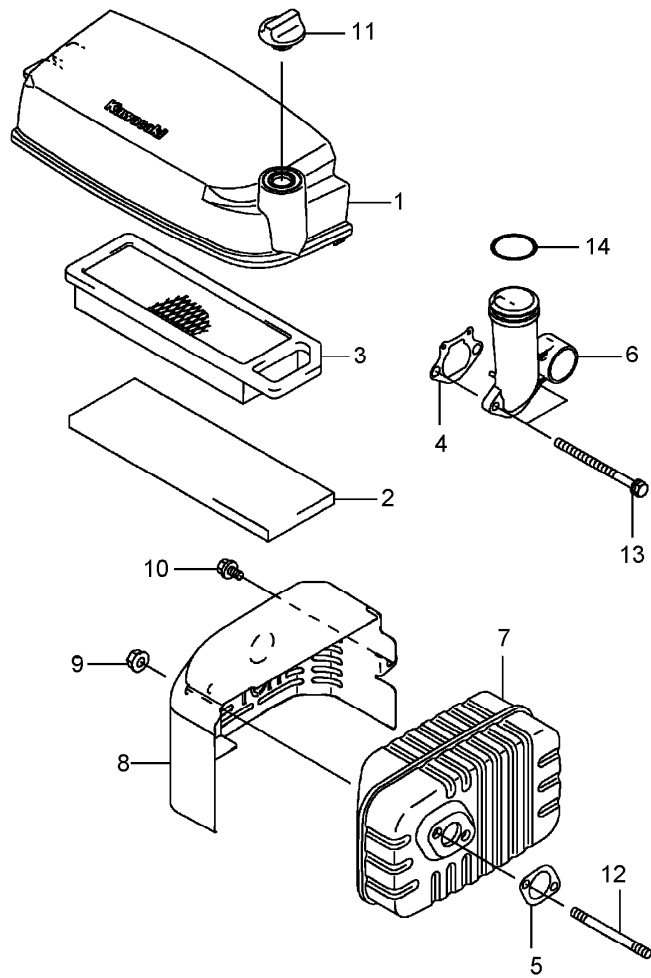
Control Equipment Assembly

<i>Ref.</i>	<i>Part Number</i>	<i>Qty.</i>	<i>Description</i>	<i>Ref.</i>	<i>Part Number</i>	<i>Qty.</i>	<i>Description</i>
1	108-2560	1	Lever	14	100-2715	2	Washer
2	108-2561	1	Lever	15	93-8612	1	Washer
3	108-2562	1	Link-Choke	16	95-9849	1	Clamp
4	108-2563	1	Link-Throttle	17	100-2718	2	Collar
5	108-2564	1	Arm-Pivot	18	93-8588	1	Spring
6	108-2565	1	Spring-Governor	19	108-2573	1	Spring-Throttle
7	108-2566	1	Control Panel ASM	20	108-2574	1	Spring
8	108-2567	1	Sleeve	21	95-9853	1	Bolt (5X18)
9	108-2568	1	Arm-Governor	22	108-2575	1	Washer (6.5X11.5X2.0)
10	108-2569	1	Governor ASM	23	100-2804	2	Bolt-Flanged
11	108-2570	1	Bolt	24	108-2576	1	Bolt-Flange
12	108-2571	1	Nut	25	108-2577	1	Screw-Pan
13	108-2572	1	Nut	26	108-2578	1	Pin-Snap



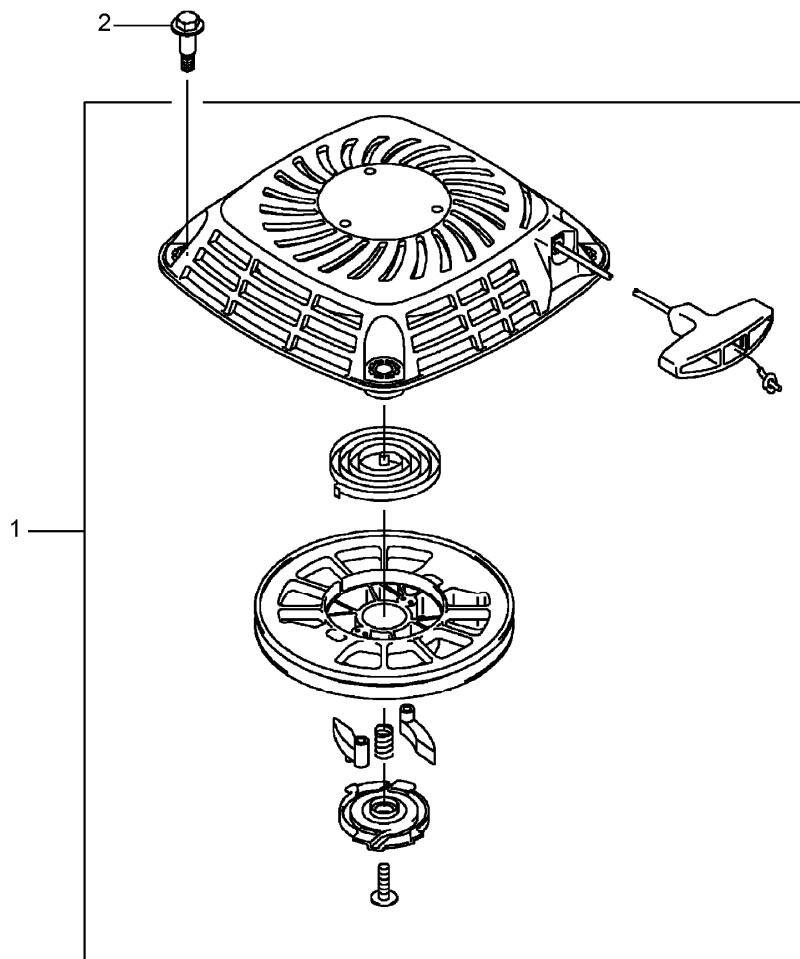
Carburetor Assembly

<i>Ref.</i>	<i>Part Number</i>	<i>Qty.</i>	<i>Description</i>
1	108-2579	1	Gasket
2	108-2580	1	Gasket-Screw
3	108-2581	2	Gasket
4	108-2582	1	Shaft
5	108-2583	1	Carburetor ASM
6	108-2584	1	Needle-Jet
7	108-2585	1	Screw-Pilot, Air
8	108-2586	1	Chamber-Float
9	108-2587	1	Valve-Throttle
10	108-2588	1	Shaft-Carburetor
11	108-2589	1	Shaft-Carburetor
12	108-2590	1	Insulator
13	108-2591	1	Float ASM
14	108-2592	1	Choke Valve ASM
15	108-2593	1	Limiter
16	108-2594	1	Nozzle-Main
17	108-2595	1	Screw
18	108-2596	1	Screw
19	108-2597	1	Jet-Main (No.74)
20	108-2598	1	Spring
21	108-2599	2	Seal
22	108-2600	1	Spring
23	108-2601	1	Screw



Air Filter and Muffler Assembly

Ref.	Part Number	Qty.	Description
1	108-2602	1	Case-Filter, Air
2	108-2603	1	Element-Filter, Air
3	108-2604	1	Air Filter Element ASM
4	108-2605	1	Gasket-Pipe, Intake
5	108-2606	1	Gasket-Muffler
6	108-2607	1	Pipe-Intake
7	108-2608	1	Muffler
8	108-2609	1	Cover-Muffler
9	108-2610	2	Nut
10	108-2611	1	Bolt (6X10)
11	108-2612	1	Nut
12	100-2761	2	Bolt-Stud
13	100-2762	2	Bolt
14	108-2613	1	O-Ring (32Mm)



Starter Assembly

<i>Ref.</i>	<i>Part Number</i>	<i>Qty.</i>	<i>Description</i>
1	108-2614	1	Starter-Recoil
2	108-2615	4	Bolt

Notes:



Count on it.