



Count on it.

Parts Catalog

Commercial Walk-Behind Mower
Fixed Deck, T-Bar, Gear Drive with 32in
Cutting Unit

Model No. 30672—Serial No. 310000001 and Up

Ordering Replacement Parts

To order replacement parts, please supply the part number, the quantity, and the description of each part desired.

Understanding Reference Numbers

Each identified part in an illustration has a reference number. The reference number for a part also appears in the parts list, along with other information about the part.

This catalog uses two special reference number formats, one to indicate parts in a service assembly and another to indicate the quantity of a given part in an illustration.

Service Assembly Reference Numbers

Parts in service assemblies have reference numbers in the form a:b. The a represents the reference number of the entire service assembly and the b represents a sequential number unique to each part within the service assembly.

For example, a wheel assembly might be identified by reference number 6, the tire by 6:1, the valve by 6:2, and the wheel by 6:3. When you order the assembly identified by reference number 6, you receive all parts identified by reference numbers 6:1, 6:2, and 6:3. However, you may also order any part individually. Reference numbers of this type appear in illustration and in parts lists.

Reference Numbers Indicating Quantity

In an illustration, if a reference number indicates more than one part, the reference number has the form nX y. The n represents the quantity of the part, the X is the multiplication symbol, and the y represents the reference number.

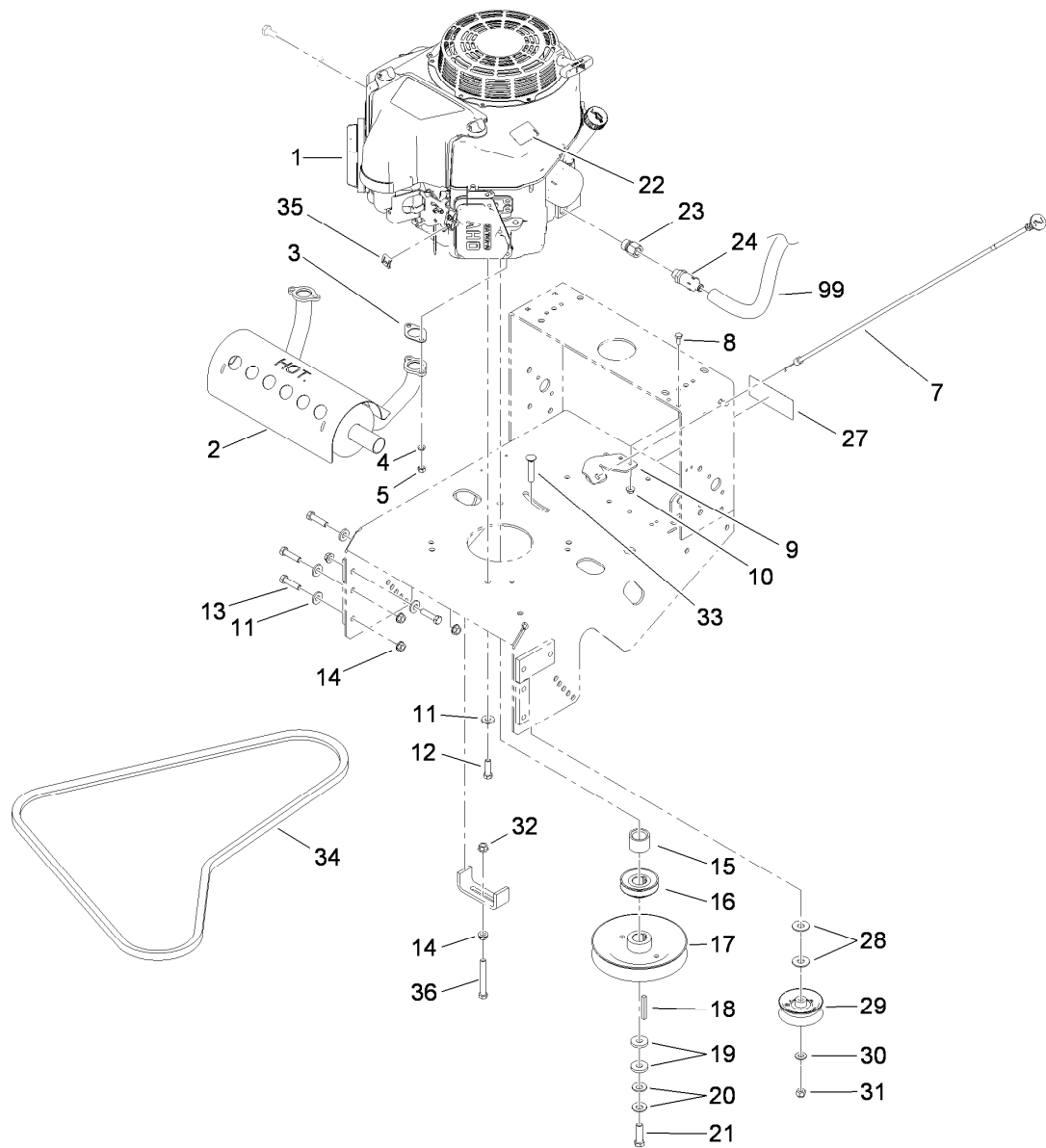
For example, in an illustration, the reference number 2X 37 means that two of the parts identified by reference number 37 are indicated.

List of Abbreviations

AR: as required	HLH: hex lag head	RH: right hand
ASM: assembly	HOC: height-of-cut	ROPS: roll-over protection system
BBC: blade brake control	HSBH: hex socket button head	RRB: rear roller brush
BHTF: button head thread forming	HSFH: hex socket flat head	SFH: slotted fillister head
CARR: carriage	HSH: hex socket head	SHH: slotted hex head
CCW: counter clockwise	HWH: hex washer head	SHWH: slotted hex washer head
CW: clockwise	HWHTF: hex washer head thread forming	SPH: slotted pan head
DEG: degrees	HYD: hydraulic	SQH: square head
ECM: electronic control module	LH: left hand	SRH: slotted round head
EXT: external	NI: nylon insert	STD: standard
FH: flat head	NPTF: national pipe thread fine	TAP: self tapping
GA: gauge	PFH: phillips flat head	TTH: torx truss head
HD: heavy-duty	PPH: phillips pan head	
HF: hex flange	PPHTF: phillips pan head thread forming	
HH: hex head	PRH: phillips round head	
HHF: hex head flange	PTH: phillips truss head	
HHFTF: hex head flange thread forming	PTO: power-take-off	
HJ: hex jam		

Contents

Engine and Exhaust Assembly.....	4
Fuel System Assembly	5
Frame and Transmission Assembly	6
Drive Wheel and Brake Assembly	7
Handle and Control Assembly	9
Wire Harness Assembly	10
Deck and Shield Assembly	11
Deck Assembly No. 110-6901	12
Deflector Assembly No. 119-6529.....	13
Idler Arm and Caster Wheel Assembly	14
Spindle and Blade Assembly	16
Attachments and Accessories	17



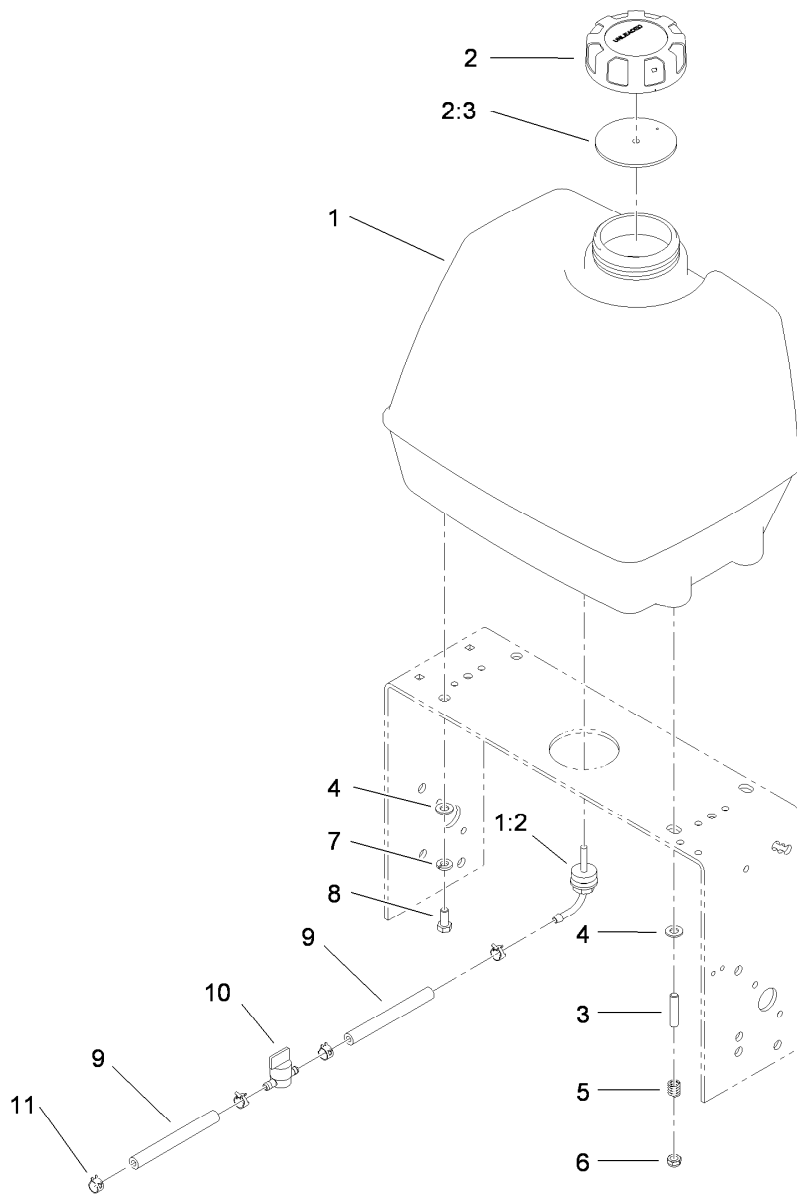
Engine and Exhaust Assembly

Ref.	Part Number	Qty.	Description
1		1	Engine-Kawasaki, Fs481V-As05 ●■
2	116-2970	1	Muffler-Horizontal, Offset
3	1-653313	2	Gasket-Exhaust
4	114-3550	4	Washer-Lock, Spring
5	114-3549	4	Nut
7	103-1796	1	Cable-Choke
8	321-3	2	Screw-HH
9	103-1797-01	1	Bracket-Cable, Choke
10	32128-33	2	Nut-HF
11	98-5975	12	Washer-Belleville
12	323-7	4	Screw-HH
13	323-8	8	Screw-HH
14	3290-357	9	Nut-HHF, Whiz
15	1-633453	1	Spacer-Clutch
16	103-1666	1	Sheave-Transmission
17	103-1667	1	Sheave
18	103-4177	1	Key

Ref.	Part Number	Qty.	Description
19	1-373034	2	Washer
20	1-603610	2	Washer-Spring
21	3212-6	1	Screw-HH
22	106-0699	1	Decal-Warning
23	103-1966	1	Adapter
24	92-6877	1	Valve-Drain, Oil
27	98-0776	1	Decal-Caution
28	3256-5	2	Washer-Flat
29	1-323285	1	Pulley-Idler, Flat
30	3256-24	1	Washer-Flat
31	3296-39	1	Nut-Lock, NI
32	32128-21	1	Nut-HF
33	3231-6	1	Screw-CARR
34	1-323745	1	Belt-V
35	81-1690	1	Clamp-Cable
36	323-14	1	Screw-HH
99	103-1964	1	Hose-Drain, Oil

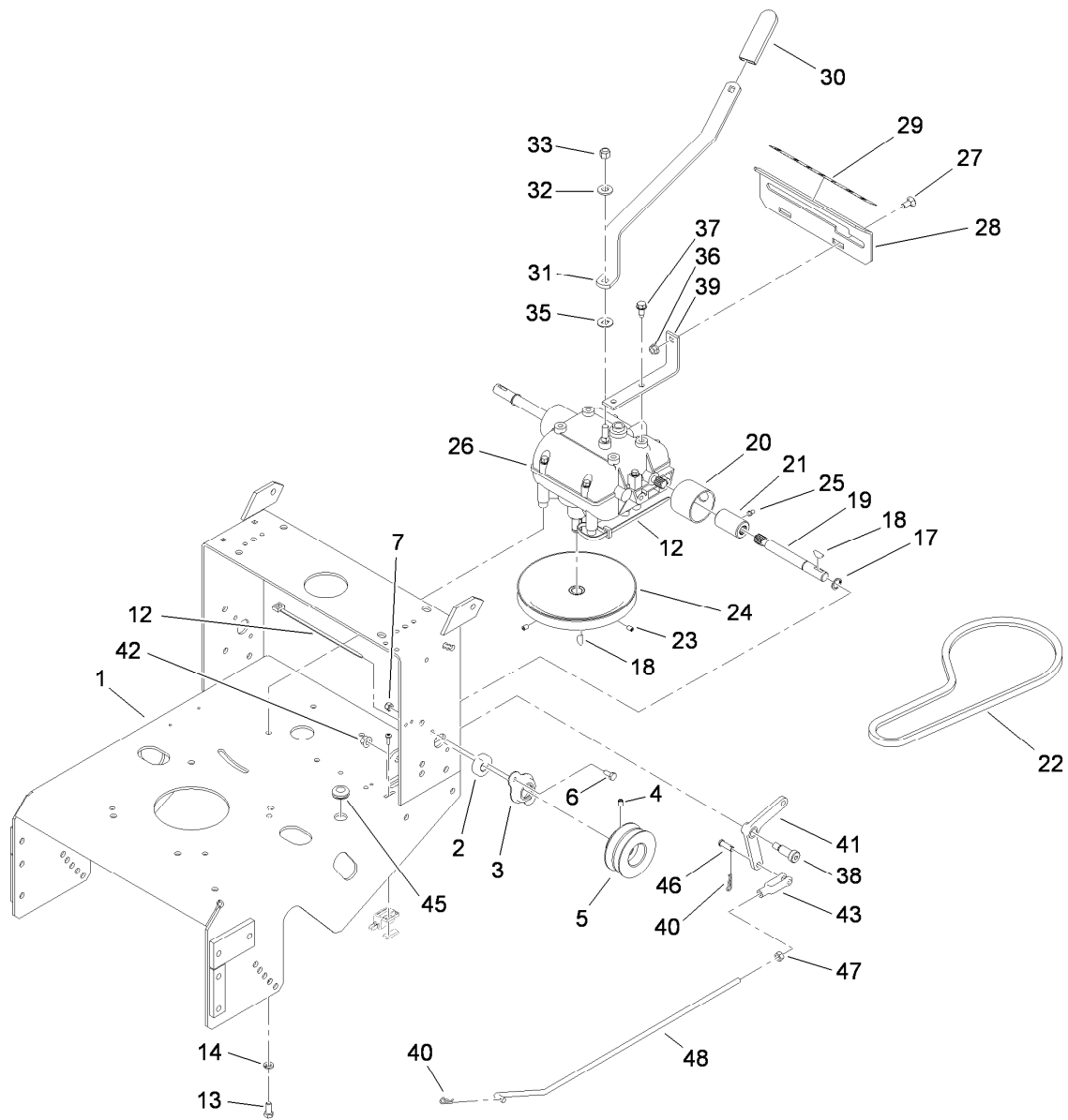
● Not serviced separately

■ Obtain parts from www.kawpowerepc.com



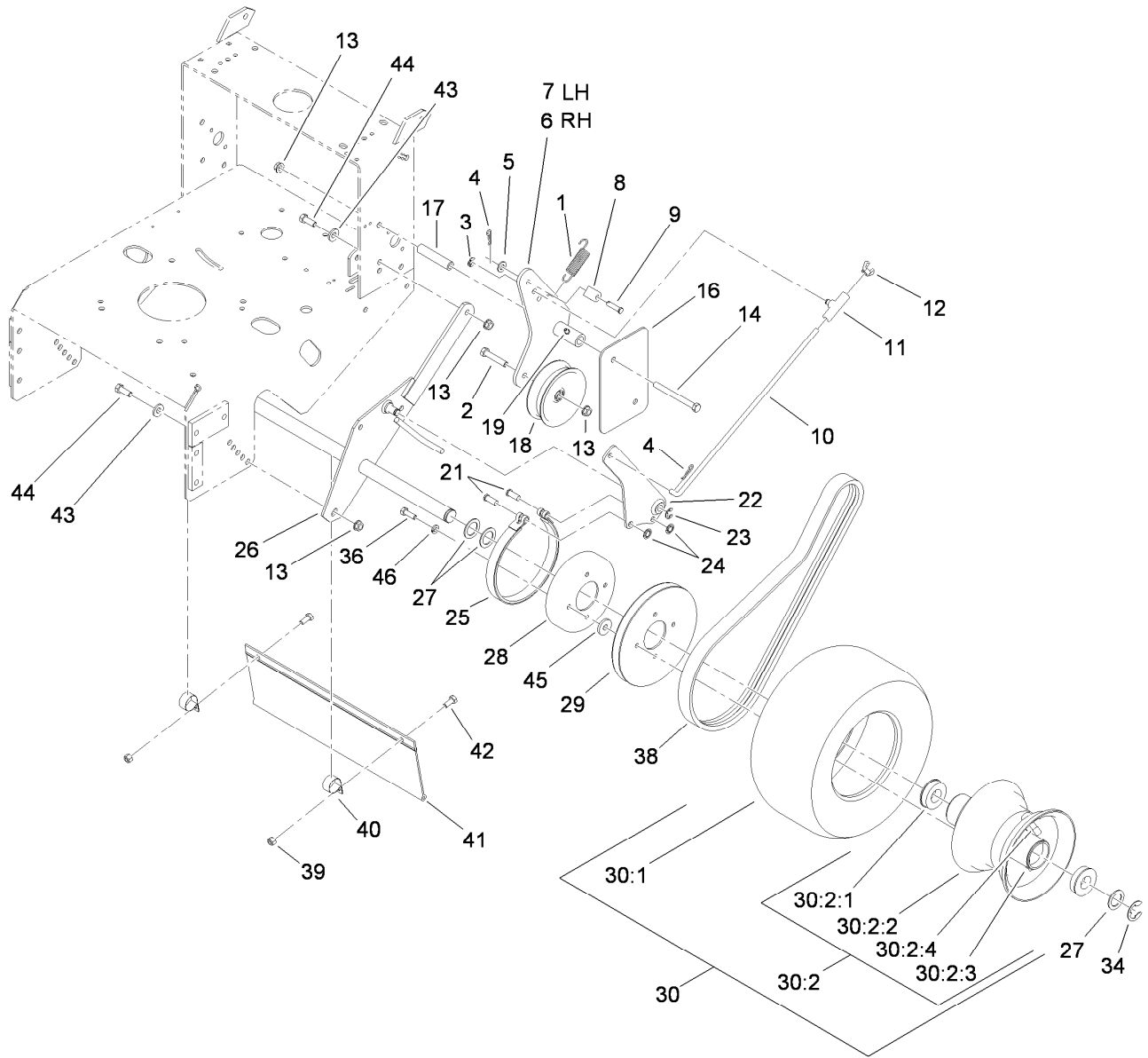
Fuel System Assembly

<i>Ref.</i>	<i>Part Number</i>	<i>Qty.</i>	<i>Description</i>
1	106-0730	1	Fuel Tank ASM
1:2	103-2605	1	Fitting-Fuel, Bulkhead
2	88-3980	1	Gas Cap ASM
2:3	88-4010	1	Gasket-Cap, Gas
3	1-633023	2	Stud
4	3256-23	4	Washer-Flat
5	1-633349	2	Spring-Tank, Fuel
6	3296-47	2	Nut-Lock, NI
7	1-805005	2	Washer-Lock
8	322-3	2	Screw-HH
9	109-0650	2	Hose-Fuel
10	1-603770	1	Valve-Fuel
11	2412-98	4	Clamp



Frame and Transmission Assembly

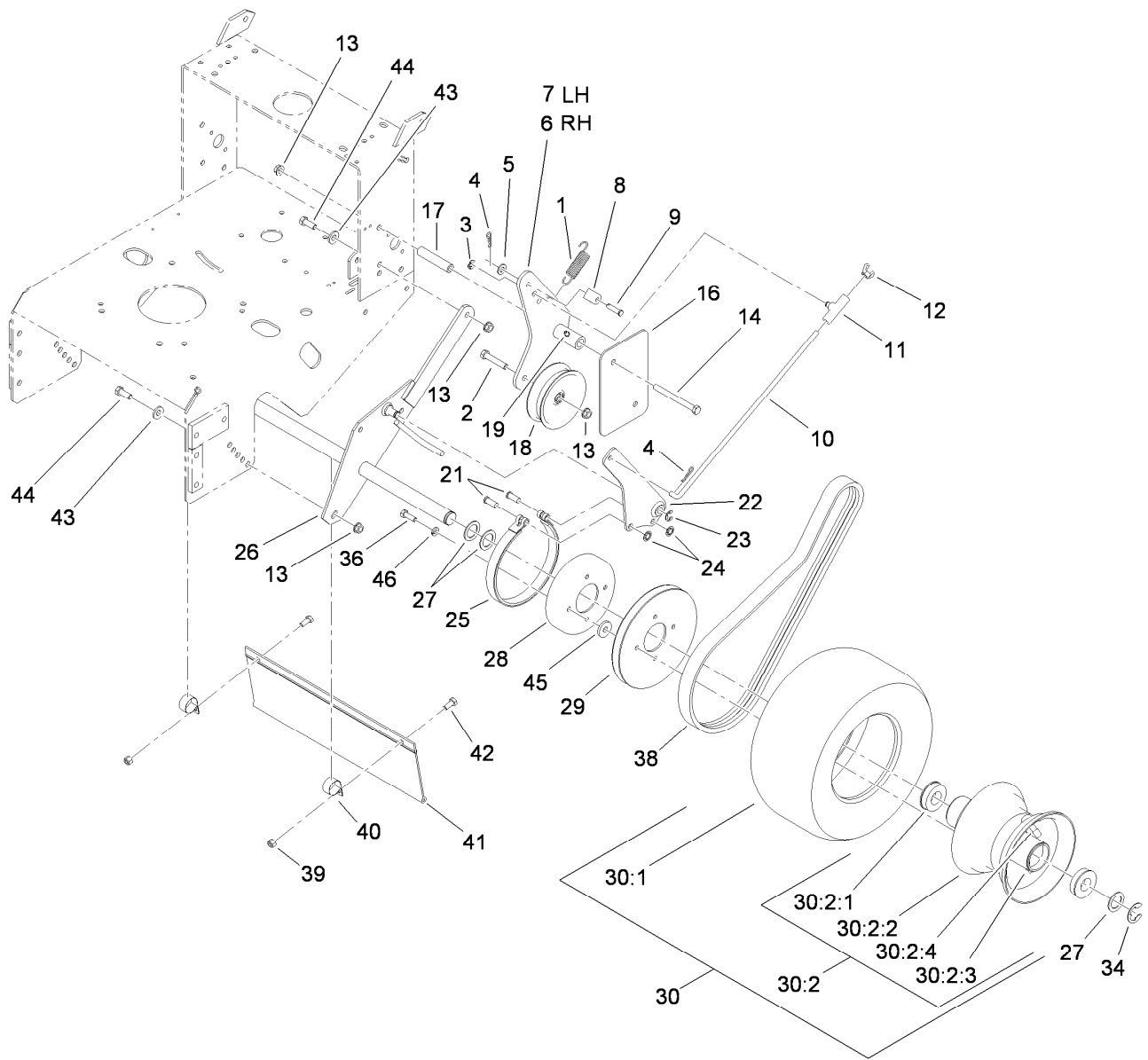
Ref.	Part Number	Qty.	Description	Ref.	Part Number	Qty.	Description
1	117-3521-01	1	Gear Frame ASM	27	3230-1	2	Bolt-CARR
2	1-323252	2	Bearing-Shaft	28	1-323387-03	1	Plate-Shift
3	1-323254	2	Flange-Output	29	98-3256	1	Decal-Speed, Ground
4	1-803310	2	Screw-Set	30	1-303020	1	Grip-Lever
5	103-6512	2	Sheave-Transmission	31	98-3274-03	1	Lever-Shift
6	321-3	4	Screw-HH	32	98-5975	1	Washer-Belleville
7	3296-42	4	Nut-Lock, NI	33	3296-6	1	Nut-Lock
12	1-303335	2	Tie-Plastic	35	1-323379	1	Washer
13	322-3	4	Screw-HH	36	32128-20	2	Nut-HF
14	1-805005	4	Washer-Lock	37	9264964	4	Screw-HWH, Thread Cut
17	32151-62	2	Ring-Retaining	38	1-603403	1	Bolt-Shoulder
18	3257-5	3	Key-Woodruff	39	1-323389-03	2	Bracket-Plate, Shift
19	1-323502	2	Shaft-Transmission	40	1-806003	2	Pin-Cotter, Hair
20	51-4220	2	Guard-Coupler	41	1-303186	1	Bellcrank
21	1-323680	2	Coupler	42	32128-21	1	Nut-HF
22	1-323630	1	V-Belt	43	1-303105	1	Yoke-Adjustable
23	3245-41	2	Screw-HSH	45	1-543296	1	Grommet
24	1-323278	1	Sheave-Transmission	46	1-808280	1	Pin-Clevis
25	302-19	2	Fitting-Grease	47	3219-2	1	Nut-Hex
26	1-323500	1	Transmission	48	1-323303	1	Linkage-Arm



Drive Wheel and Brake Assembly

Ref.	Part Number	Qty.	Description	Ref.	Part Number	Qty.	Description
1	98-3273	2	Spring-Extension	22	1-322209-03	2	Brake Arm ASM
2	323-10	2	Screw-HH	23	32120-47	2	Ring-Retaining, External
3	32151-47	2	Ring-Retaining	24	1-803051	4	Nut-Push
4	1-806003	4	Pin-Cotter, Hair	25	1-323595	2	Band-Brake
5	3256-23	2	Washer-Flat	26	1-322232-03	1	Axle ASM
6	110-4925-03	1	RH Idler Arm ASM	27	1-543436	8	Washer-Spacer
7	110-4926-03	1	LH Idler Arm ASM	27	1-523157	6	Washer-Spacer
8	74-0521	2	Fitting-Rod	28	1-323261	2	Drum-Brake
9	283-6	2	Pin-Clevis	29	1-323349	2	Sheave-Wheel, Drive
10	1-323296	2	Rod-Brake	30	1-323346	2	Wheel And Tire ASM
11	110-5866	2	Swivel-Brake	30:1	1-323361	1	Tire
12	1-513959	2	Wingnut-Nylock	30:2	1-323360	1	Wheel And Hub ASM
13	3290-357	10	Nut-HHF, Whiz	30:2:1	1-323329	2	Bearing-Flanged
14	323-16	4	Screw-HH	30:2:2		1	Rim ASM ●
16	98-5131-01	2	Shield-Wheel, Drive	30:2:3		1	Fitting-Grease ●
17	1-323694	4	Spacer-Shield	30:2:4		1	Valve Stem And Cap ●
18	1-323634	2	Idler-Drive, Wheel	34	1-808519	2	Ring-Snap
19	302-19	2	Fitting-Grease	36	322-5	8	Screw-HH
21	1-323307	4	Pin-Clevis	38	1-323744	2	Belt-Drive, Wheel

● Not serviced separately

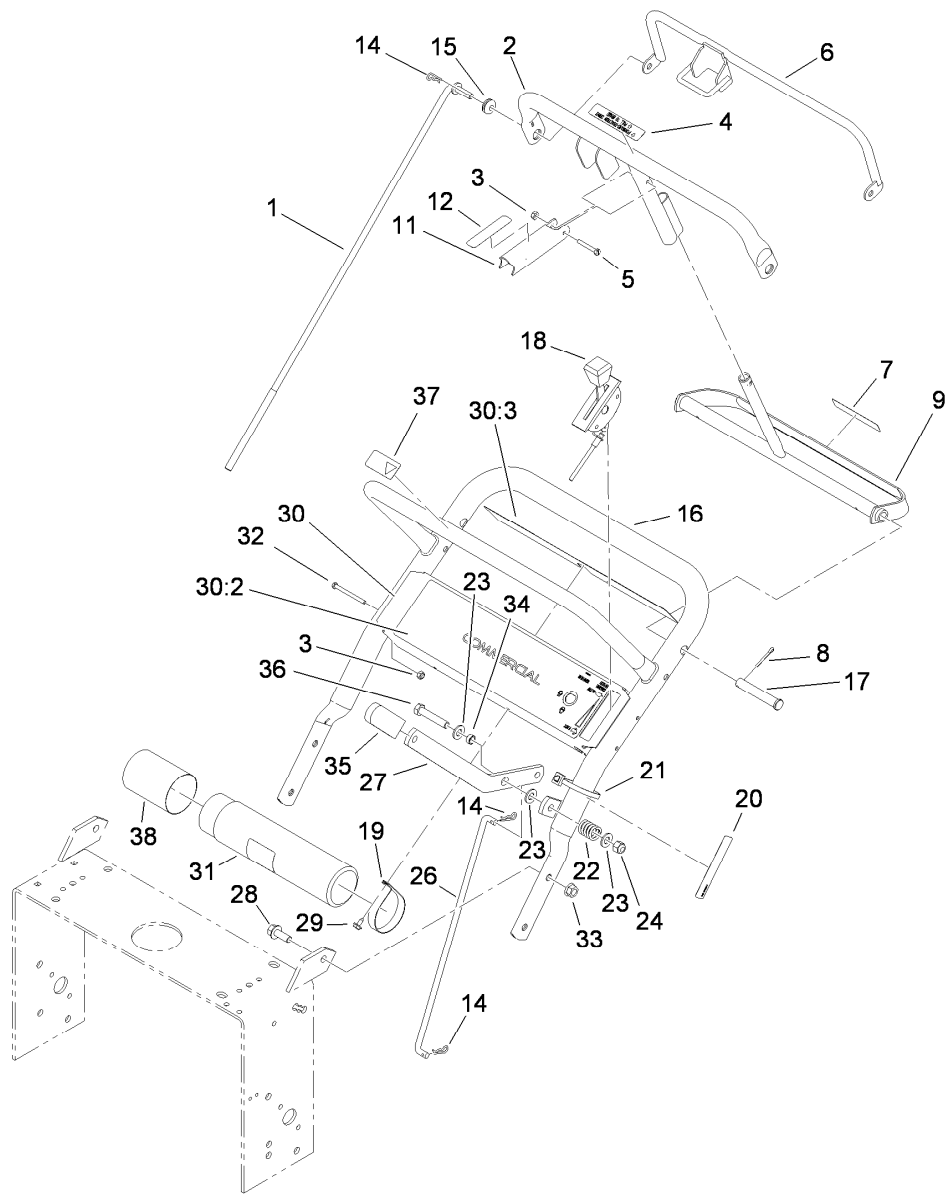


Drive Wheel and Brake Assembly (continued)

Ref.	Part Number	Qty.	Description
39	3296-29	2	Nut-Lock, NI
40	2412-104	2	R-Clamp
41	98-3259	1	Shield-Trailing
42	322-3	2	Screw-HH

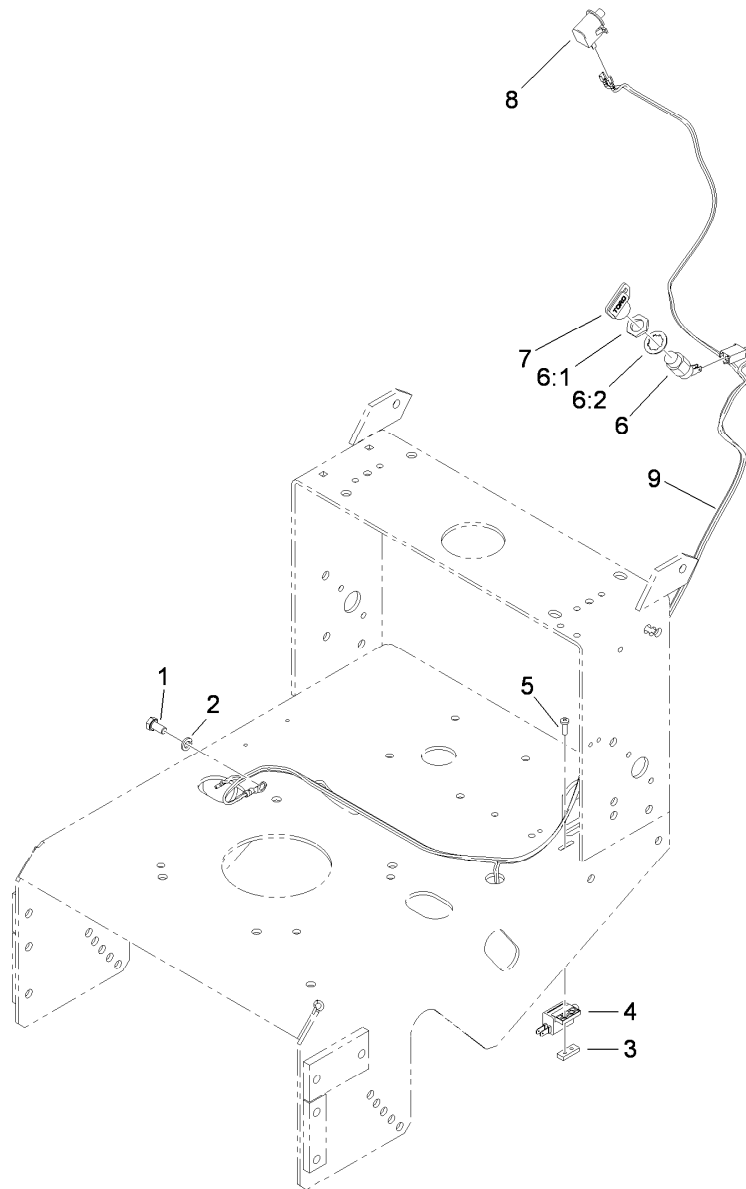
Ref.	Part Number	Qty.	Description
43	98-5975	4	Washer-Belleville
44	323-6	4	Screw-HH
45	1-373034	8	Washer
46	1-805005	8	Washer-Lock

● Not serviced separately



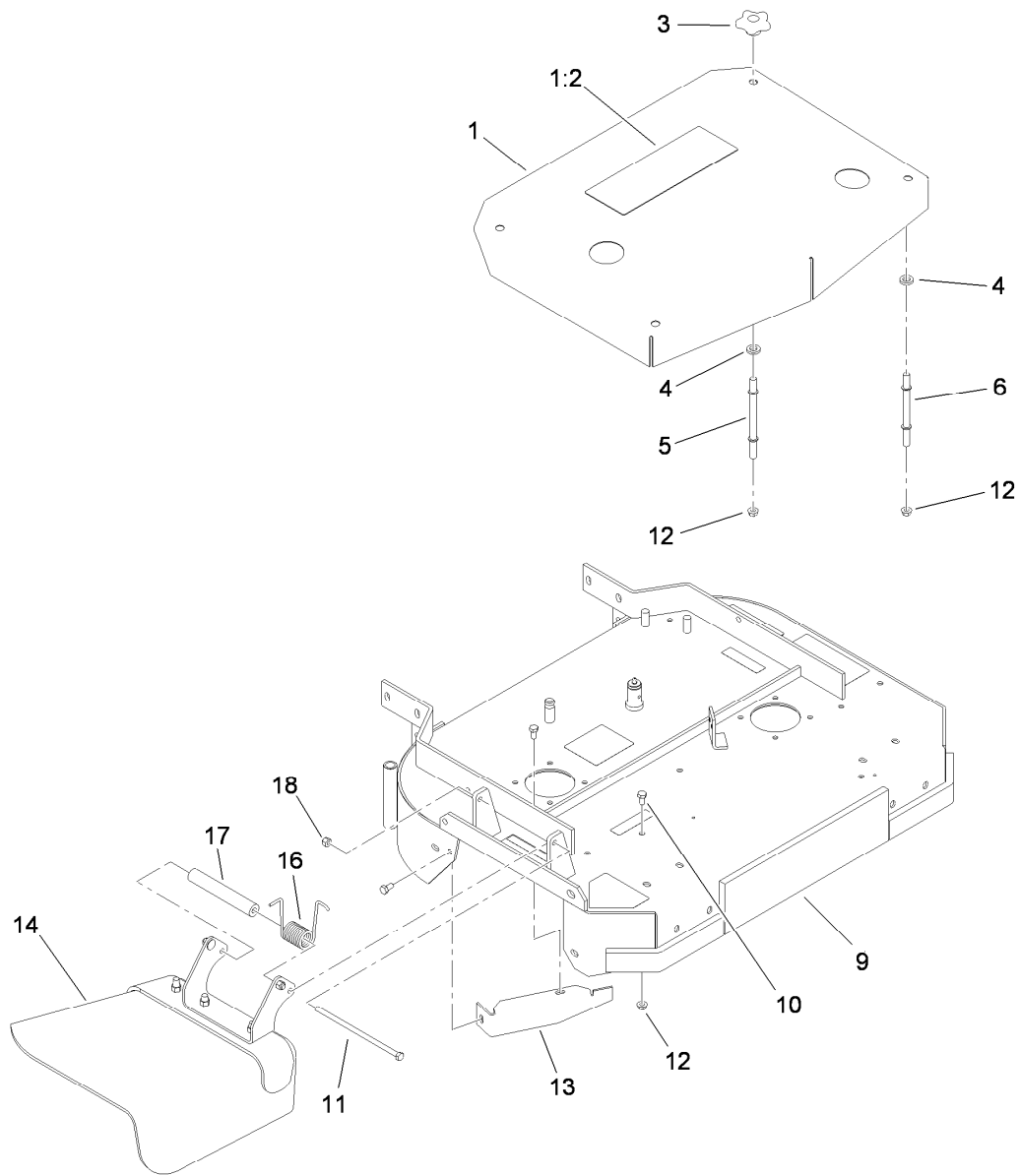
Handle and Control Assembly

Ref.	Part Number	Qty.	Description	Ref.	Part Number	Qty.	Description
1	98-3282	2	Rod-Control	22	1-303160	1	Spring-Compression
2	95-5522-03	1	Control Bar ASM	23	3256-24	3	Washer-Flat
3	3296-2	5	Nut-Lock, NI	24	3296-39	1	Nut-Lock, NI
4	82-2290	1	Decal	26	98-3279	1	Linkage-Drive, Blade
5	32105-1	1	Screw-SHH	27	98-3287-03	1	Lever-Engagement, Blade
6	82-7680-03	1	Bail ASM	28	3234-11	4	Screw-HHF
7	82-2280	1	Decal	29	32104-76	2	Screw
8	3272-11	2	Pin-Cotter	30	110-6905	1	Control Panel ASM
9	99-8501-03	1	Control-Pivot	30:2	110-6916	1	Decal-Panel, Control
11	98-3261-03	1	Lever-Brake, Parking	30:3	105-0884	1	Decal-Danger
12	98-3266	1	Decal	31	104-7050	1	Tube-Manual
14	1-806003	3	Pin-Cotter, Hair	32	32105-14	4	Screw-SHH
15	237-141	2	Grommet-Rubber	33	32128-21	4	Nut-HF
16	98-3267-03	1	Upper Handle ASM	34	99-8509	1	Spacer
17	283-55	2	Pin-Clevis	35	1-303020	1	Grip-Lever
18	119-6539	1	Cable-Throttle	36	323-10	1	Screw-HH
19	2412-120	2	R-Clamp	37	98-4387	1	Decal-Protection, Ear
20	95-5537	1	Decal-Engage, Deck	38	104-7048	1	Cap-Housing
21	1-303335	1	Tie-Plastic				



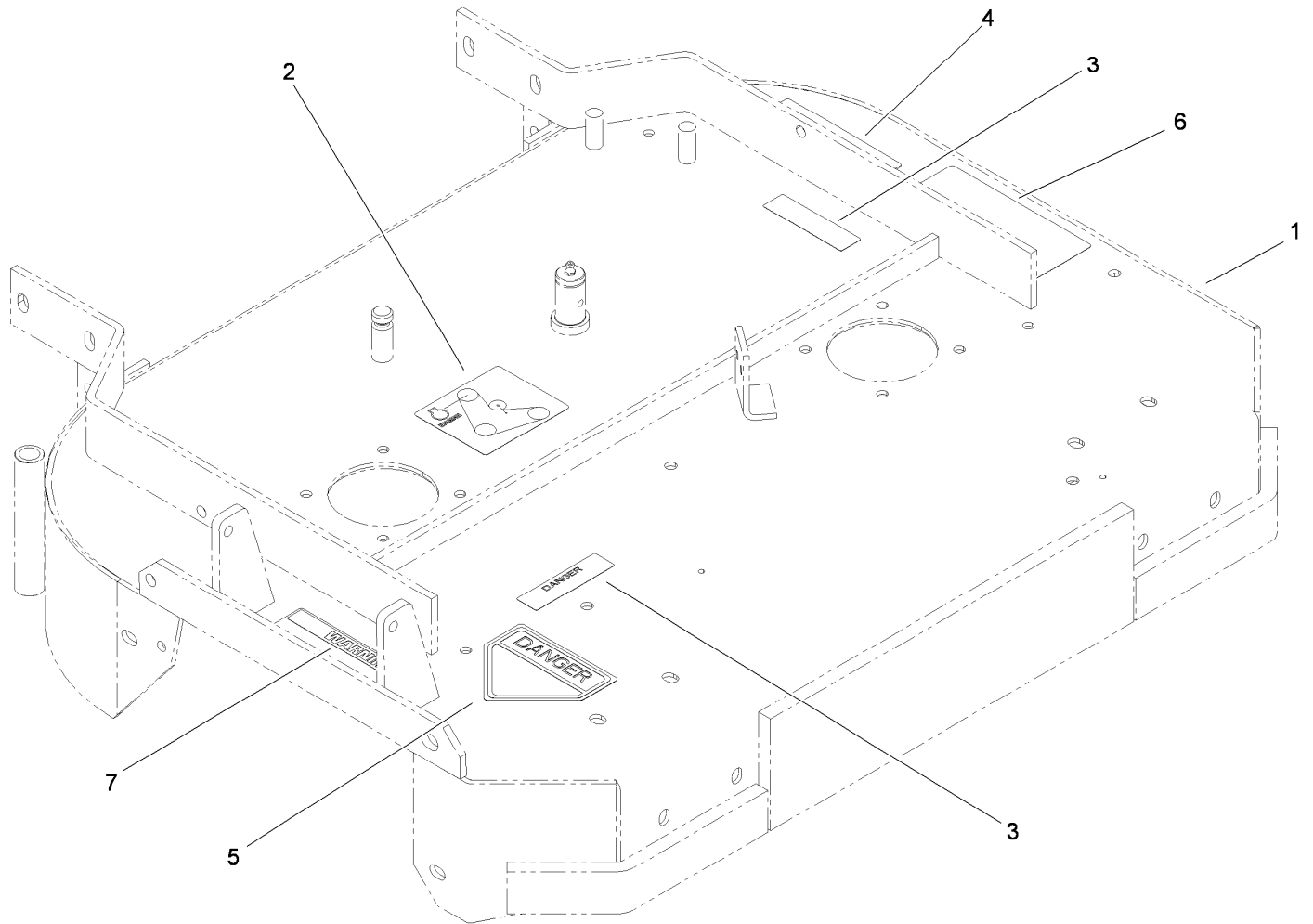
Wire Harness Assembly

Ref.	Part Number	Qty.	Description
1	33114-016	1	Screw-HH
2	3253-4	1	Washer-Lock
3	1-633181	1	Plate-Tapped
4	1-513152	1	Switch-Closed, Normally
5	3290-500	2	Screw-PPH
6	29-5560	1	Switch-On / Off
6:1	218-461	1	Nut-HH
6:2	3254-5	1	Washer-Tooth, Internal
7	63-8360	1	Key-Ignition
8	740275	1	Switch-Seat
9	119-6535	1	Harness-Wire



Deck and Shield Assembly

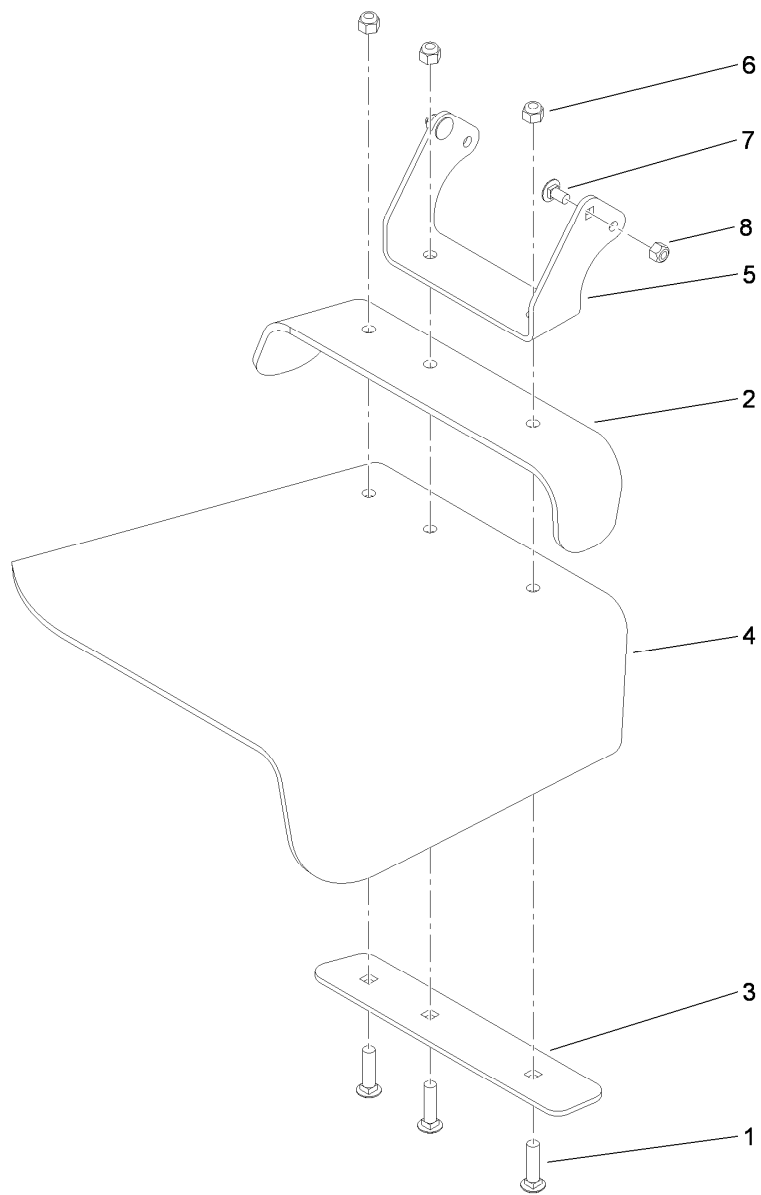
Ref.	Part Number	Qty.	Description
1	1-324407	1	Shield-Belt
1:2	106-0710	1	Decal
3	106-4161	4	Knob-Handle
4	1-323417	4	Washer
5	1-303536	2	Stud-Shield, Belt (Long)
6	1-303537	2	Stud-Shield, Belt (Short)
9	110-6901	1	32 Inch Deck ASM
10	322-2	7	Screw-HH
11	322-50	1	Screw-HH
12	32128-20	11	Nut-HF
13	116-1730-01	1	Baffle-Dogleg
14	119-6529	1	Deflector ASM
16	104-8554	1	Spring-Torsion
17	105-4622	1	Spacer
18	3296-29	1	Nut-Lock, NI



Deck Assembly No. 110-6901

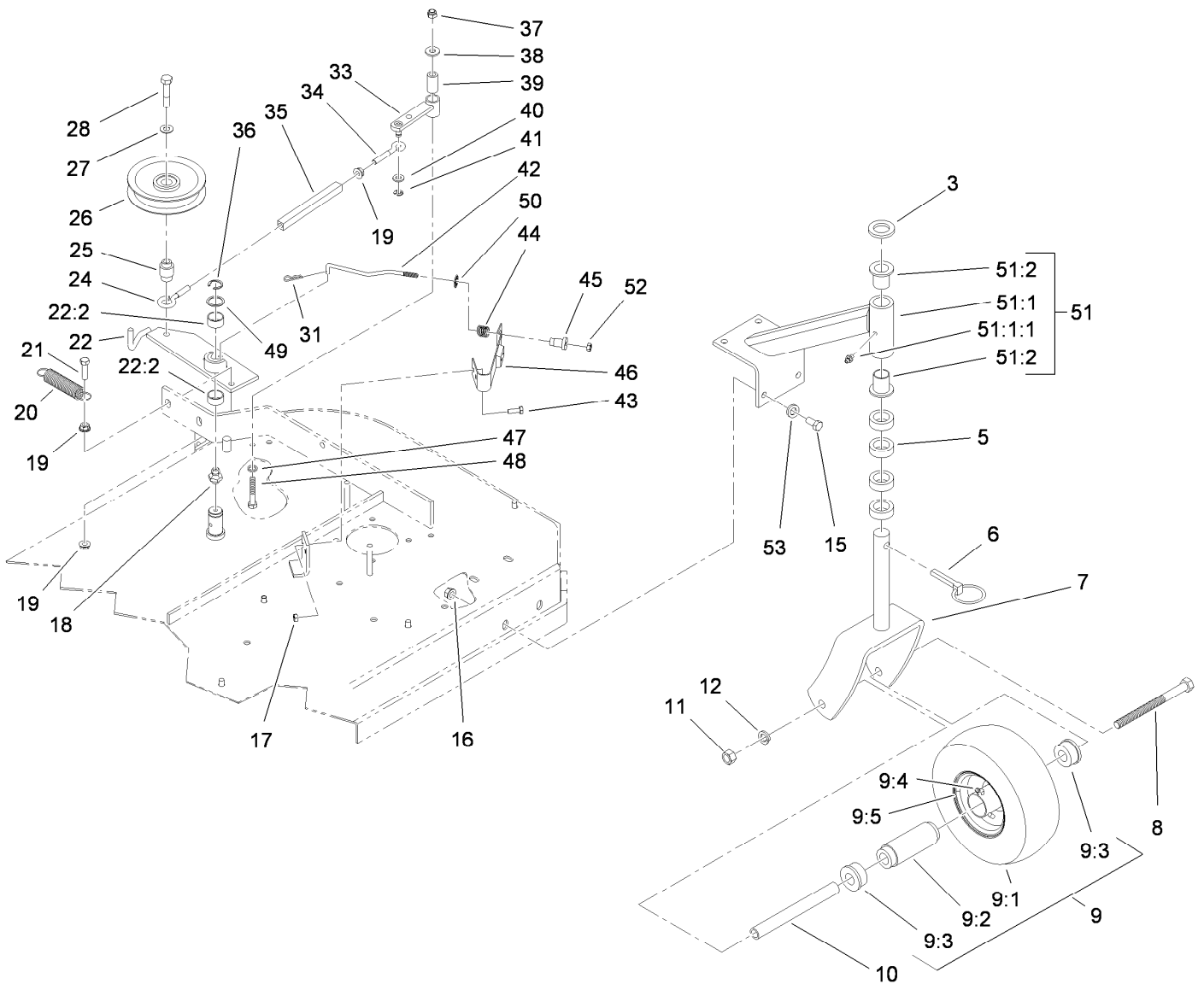
Ref.	Part Number	Qty.	Description
1		1	Deck ●
2	98-3296	1	Decal-Routing, Belt
3	98-5954	2	Decal-Cover, Missing
4	98-5130	1	Decal-Torque, Bolt
5	43-8480	1	Decal-Danger
6	66-1340	1	Decal-Danger, Thrown Object
7	104-8569	1	Decal-Warning

● Not serviced separately



Deflector Assembly No. 119-6529

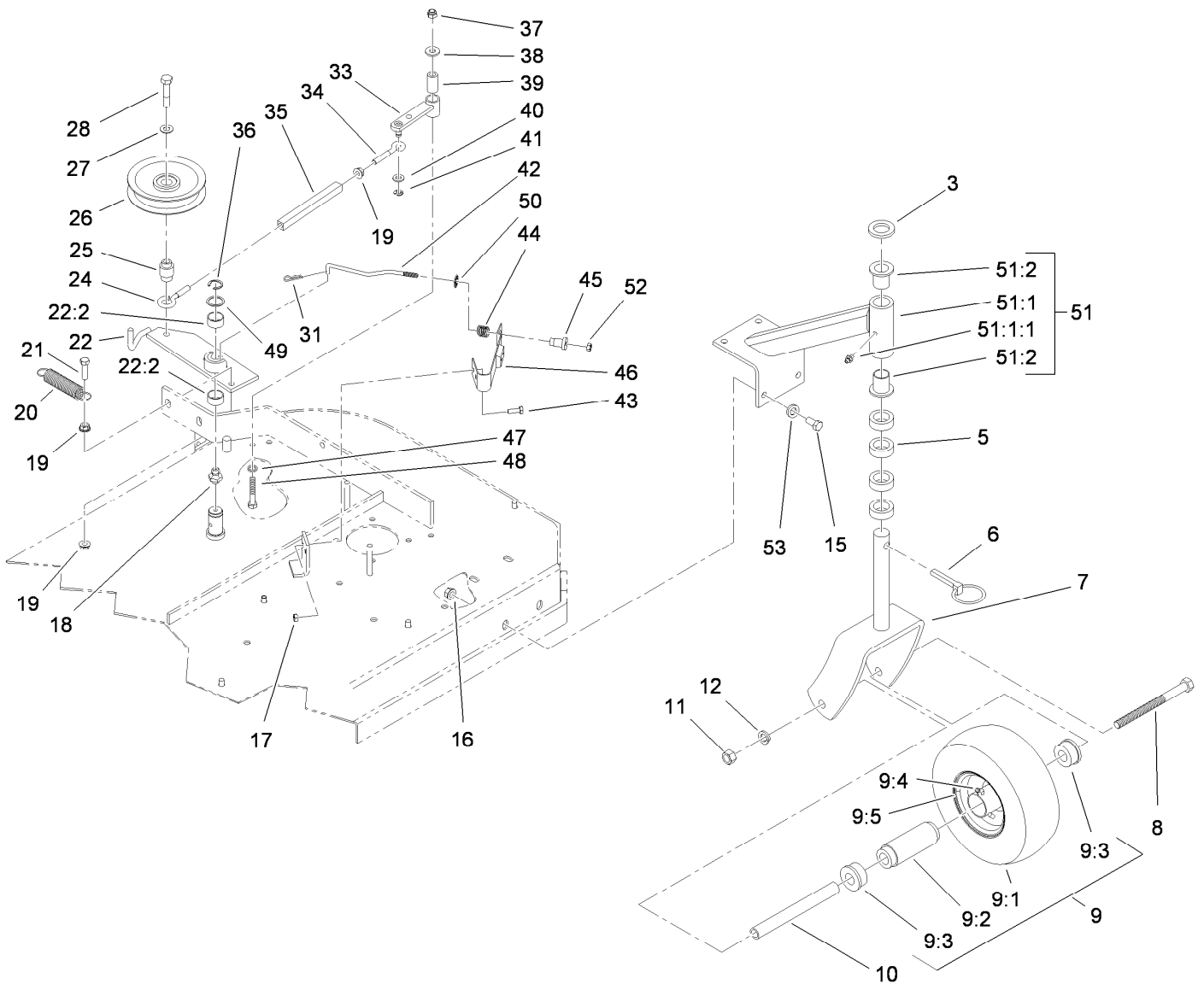
<i>Ref.</i>	<i>Part Number</i>	<i>Qty.</i>	<i>Description</i>
1	3231-4	3	Screw-CARR
2	107-4138-01	1	Strap-Deflector, Top
3	107-4139-01	1	Strap-Discharge
4	107-4137	1	Deflector-Rubber
5	119-6532-01	1	Bracket-Mounting, Deflector
6	3296-39	3	Nut-Lock, NI
7	3230-18	2	Screw-CARR
8	3296-29	2	Nut-Lock, NI



Idler Arm and Caster Wheel Assembly

Ref.	Part Number	Qty.	Description	Ref.	Part Number	Qty.	Description
3	1-513338	2	Washer-Flat	20	1-323071	1	Spring-Extension
5	1-303314	8	Spacer-Caster	21	322-6	1	Screw-HH
6	1-809020	2	Pin	22	103-3600	1	Idler Arm ASM
7	1-322145-01	2	Fork	22:2	1-323729	2	Sleeve-Bearing
8	325-20	2	Screw-HH	24	1-303348	1	Eyebolt-Thread, LH
9	110-5023	2	Wheel And Tire ASM	25	1-303434	1	Bushing-Engagement
9:1		1	Tire ●	26	1-603843	1	Pulley-Idler
9:2	1-513809	1	Bearing	27	98-5975	1	Washer-Belleville
9:3	1-513810	2	Bushing	28	702809	1	Screw-HH
9:4	302-61	1	Zerk	31	1-806003	1	Pin-Cotter, Hair
9:5		1	Wheel ●	33	1-322235	1	Arm-Assist
10	1-513547	2	Spacer	34	1-303238	1	Eyebolt-Thread, RH
11	3217-9	2	Nut-HH	35	1-303236	1	Body-Turnbuckle
12	3253-7	2	Washer-Lock	36	32151-103	1	Ring-Retaining, EXT
15	323-6	8	Screw-HH	37	3296-29	1	Nut-Lock, NI
16	3290-357	8	Nut-HHF, Whiz	38	3256-3	1	Washer-Flat
17	3296-42	2	Nut-Lock, NI	39	1-403179	1	Tube-Pivot
18	302-19	1	Fitting-Grease	40	3256-23	1	Washer-Flat
19	32128-20	3	Nut-HF	41	32120-35	1	Ring-Retaining, EXT

● Not serviced separately

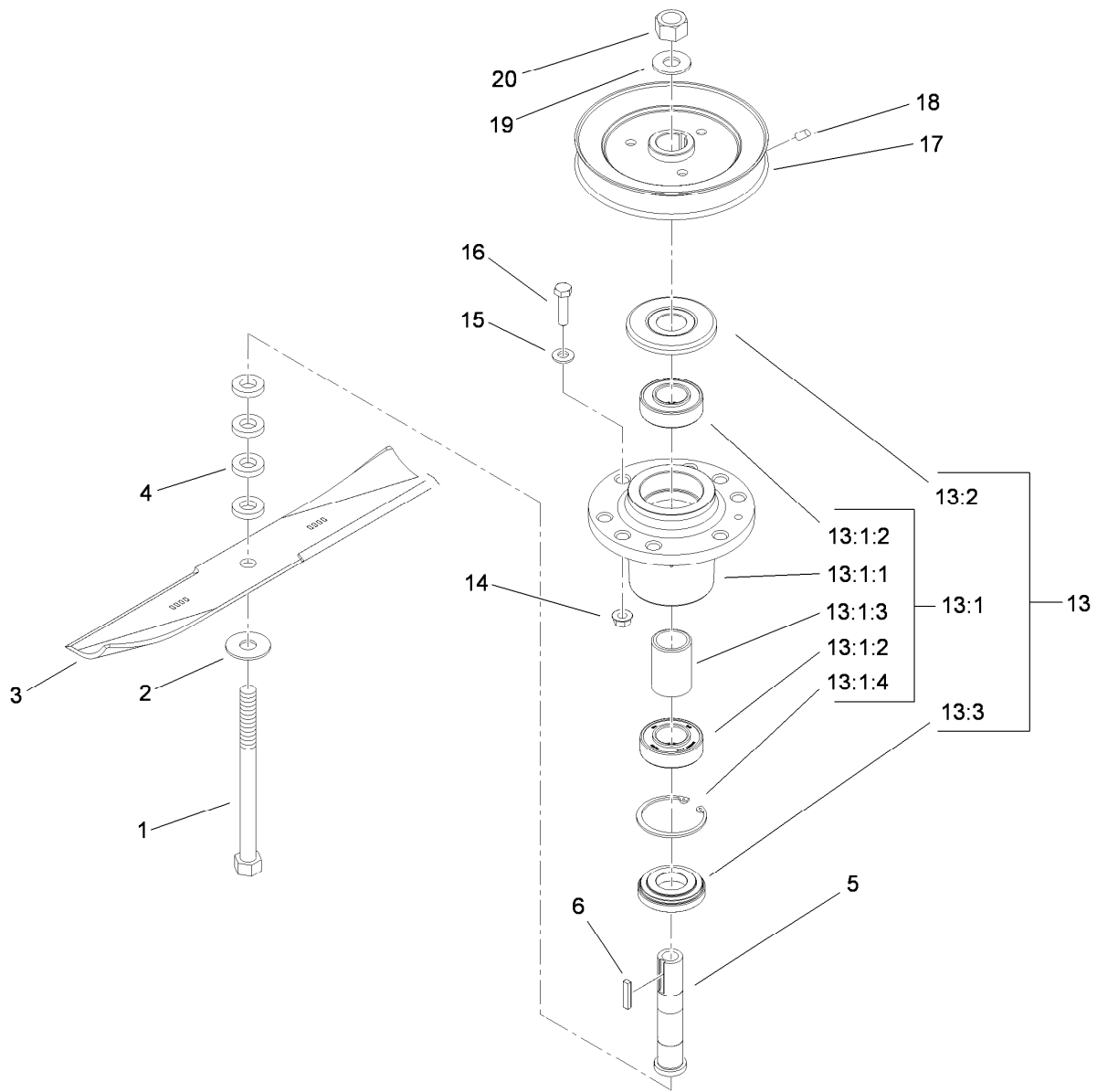


Idler Arm and Caster Wheel Assembly (continued)

Ref.	Part Number	Qty.	Description
42	1-323718	1	Rod-Brake
43	321-4	2	Screw-HH
44	1-323747	1	Spring-Compression
45	1-323746	1	Spacer-Flanged
46	1-324372	1	Pad And Spring ASM
47	1-303334	1	Washer-Spring
48	322-10	1	Screw-HH
49	1-303352	1	Washer-Spindle

Ref.	Part Number	Qty.	Description
50	1-323748	1	Ring-Push On
51	1-302203	2	Support ASM
51:1		1	Support-Caster ●
51:1:1	302-52	1	Fitting-Grease
51:2	1-303514	2	Bearing-Flanged
52	3296-56	1	Nut-Lock, NI
53	3256-24	8	Washer-Flat

● Not serviced separately



Spindle and Blade Assembly

Ref.	Part Number	Qty.	Description	Ref.	Part Number	Qty.	Description
1	1-800861	2	Screw-Cap, HH	13:1:3	103-2534	1	Spacer-Bearing
2	1-513208	2	Washer-Spring	13:1:4	32120-8	1	Ring-Snap
3	103-2527	2	Blade-Notched ●	13:2	103-1330	1	Guard-Bearing, Top
3	103-2507	2	Blade-Lift, Low	13:3	103-2535	1	Spacer-Guard, Bottom
4	1-323539	8	Spacer	14	32128-20	8	Nut-HF
5	1-323529	2	Tube-Spindle, Short	15	1-303334	8	Washer-Spring
6	1-807267	2	Key	16	322-6	8	Screw-HH
13	107-4065	2	Cutter Housing Service ASM	17	1-403183	2	Sheave
13:1		1	Cutter Housing ASM ■	18	1-803310	2	Screw-Set
13:1:1	103-7975	1	Housing-Spindle	19	1-323339	2	Washer-Retainer, Sheave
13:1:2	103-2477	2	Bearing-Jackshaft	20	3219-6	2	Nut-Hex

● Optional Equipment

■ Not serviced separately

Attachments and Accessories

For 30672 Commercial Walk-Behind Mower, Fixed Deck, T-Bar, Gear Drive with 32in Cutting Unit

Product Name	Model/Part
32 inch and 48 inch Fixed Deck Low Lift Blades.....	103-2507
Blade-Notched.....	103-2527
Atomic Blade and Decal Assembly	104-8595
Blade-Atomic, 16.25 inch (6 Pack).....	110-0407
Spring-Extension	110-1119
32 inch Recycler Kit	110-4915
Soft Bag (3 Bushel).....	30198

Notes:

Notes:



Count on it.