



**Count on it.**

**Parts Catalog**

**Commercial Walk-Behind Mower  
15HP T-Bar Hydro Drive with 91cm TURBO  
FORCE® Cutting Unit**

**Model No. 30032—Serial No. 310000001 and Up**

# Ordering Replacement Parts

To order replacement parts, please supply the part number, the quantity, and the description of each part desired.

## Understanding Reference Numbers

Each identified part in an illustration has a reference number. The reference number for a part also appears in the parts list, along with other information about the part.

This catalog uses two special reference number formats, one to indicate parts in a service assembly and another to indicate the quantity of a given part in an illustration.

## Service Assembly Reference Numbers

Parts in service assemblies have reference numbers in the form a:b. The a represents the reference number of the entire service assembly and the b represents a sequential number unique to each part within the service assembly.

For example, a wheel assembly might be identified by reference number 6, the tire by 6:1, the valve by 6:2, and the wheel by 6:3. When you order the assembly identified by reference number 6, you receive all parts identified by reference numbers 6:1, 6:2, and 6:3. However, you may also order any part individually. Reference numbers of this type appear in illustration and in parts lists.

## Reference Numbers Indicating Quantity

In an illustration, if a reference number indicates more than one part, the reference number has the form nX y. The n represents the quantity of the part, the X is the multiplication symbol, and the y represents the reference number.

For example, in an illustration, the reference number 2X 37 means that two of the parts identified by reference number 37 are indicated.

# List of Abbreviations

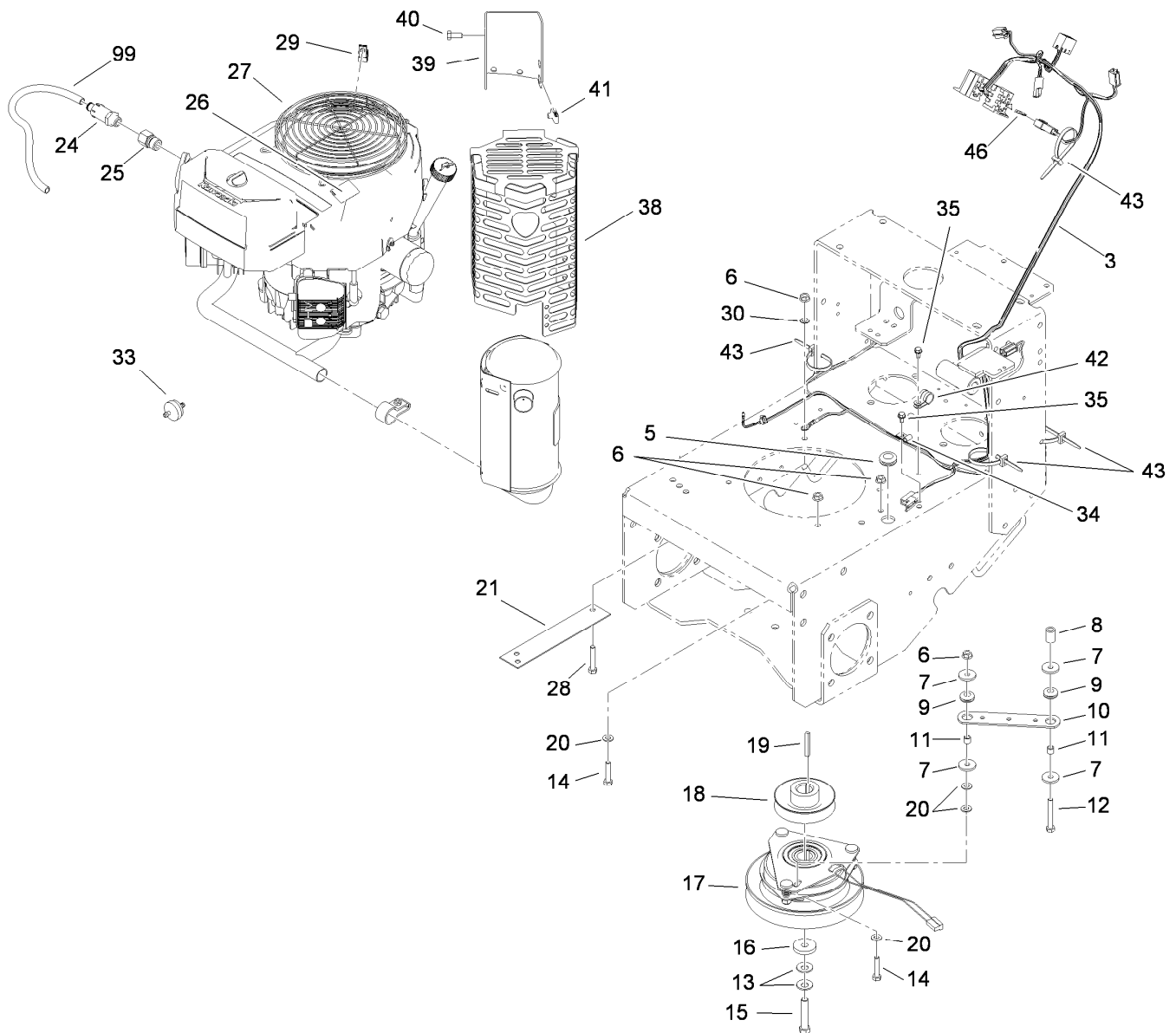
**AR:** as required  
**ASM:** assembly  
**BBC:** blade brake clutch  
**CARR:** carriage  
**CCW:** counter clock wise  
**CW:** clockwise  
**DEG:** degrees  
**ECM:** electronic control module  
**EXT:** external  
**FH:** flat head  
**GA:** gauge  
**HD:** heavy-duty  
**HF:** hex flange  
**HH:** hex head  
**HHF:** hex head flange  
**HHFTF:** hex head flange thread forming  
**HJ:** hex jam  
**HLH:** hex lag head  
**HOC:** height-of-cut

**HSBH:** hex socket button head  
**HSFH:** hex socket flat head  
**HSH:** hex socket head  
**HWH:** hex washer head  
**HWHTF:** hex washer head thread forming  
**HYD:** hydraulic  
**LH:** left hand  
**NI:** nylon insert  
**NPTF:** national pipe thread fine  
**PFH:** phillips flat head  
**PPH:** phillips pan head  
**PPHTF:** phillips pan head thread forming  
**PRH:** phillips round head  
**PTH:** phillips truss head  
**PTO:** power-take-off  
**RH:** right hand  
**ROPS:** roll-over protection system  
**RRB:** rear roller brush

**SFH:** slotted fillister head  
**SHH:** slotted hex head  
**SHWH:** slotted hex washer head  
**SPH:** slotted pan head  
**SQH:** square head  
**SRH:** slotted round head  
**STD:** standard  
**TAP:** self tapping  
**TTH:** torx truss head

# Contents

Engine and Clutch Assembly .....	4
Fuel System, Hydraulic Pump and Filter Assembly.....	5
Hydraulic Pump Assembly No. 115-4480.....	7
Hydraulic Pump Assembly No. 115-4481.....	8
Pump Drive and Wheel Assembly .....	9
Hydraulic Motor Assembly No. 104-1171 .....	10
Lower Control Assembly .....	11
Hydraulic Hose Assembly.....	12
Upper Control Assembly .....	13
Control Panel Assembly .....	14
Parking Brake Assembly.....	15
Power-Take-Off Idler and Weight Assembly.....	16
Carrier Frame Assembly.....	17
Deck Drive and Baffle Assembly .....	18
Deck Assembly No. 115-4230 .....	19
Spindle Assembly No. 110-6950 .....	20
Spindle Assembly No. 110-0728 .....	21
Deck Deflector, Roller and Cover Assembly .....	22
Deflector Assembly No. 110-0790.....	23
Attachments and Accessories .....	24



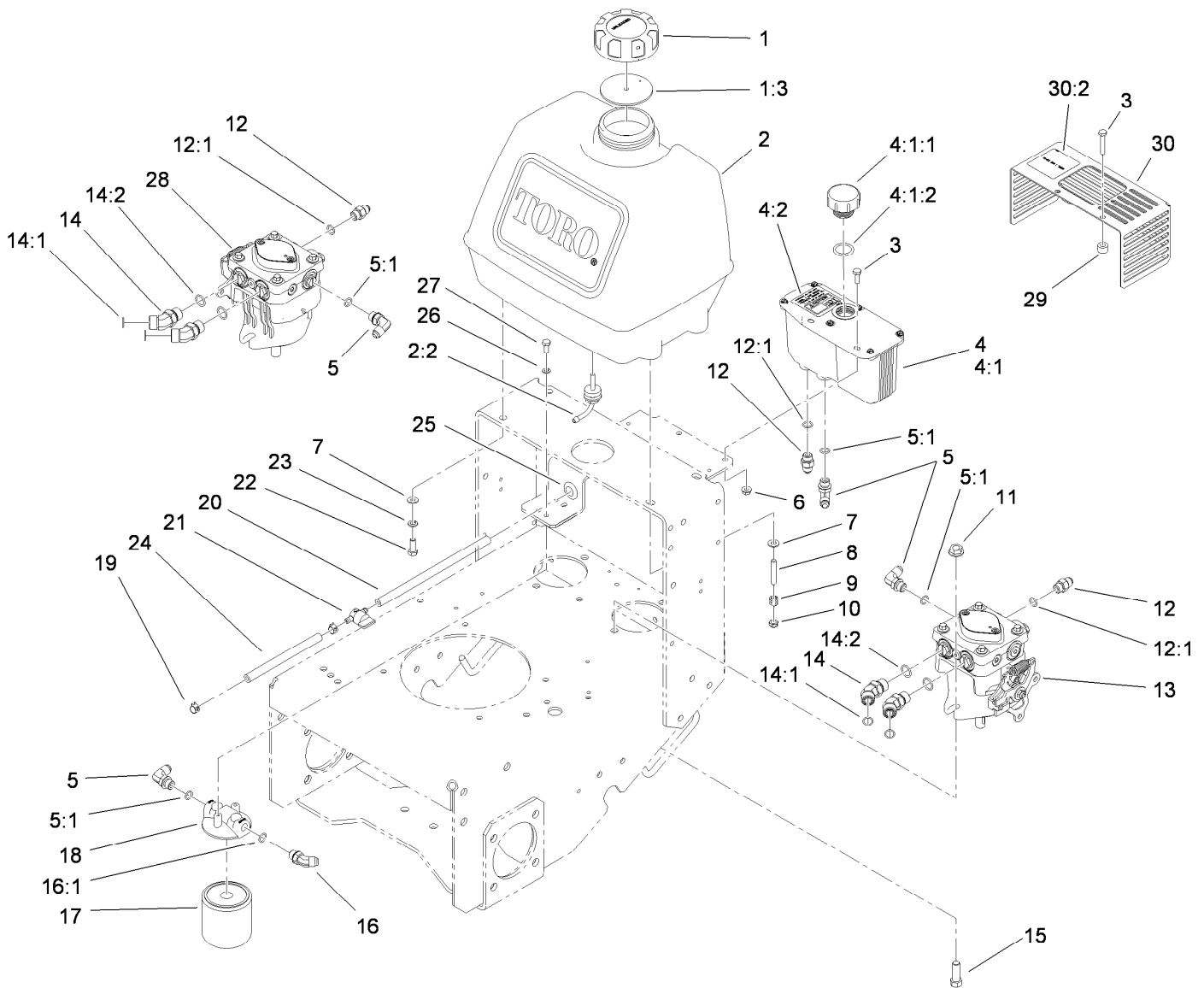
## Engine and Clutch Assembly

Ref.	Part Number	Qty.	Description
3	114-3420	1	Harness-Wire
5	112-7069	1	Grommet
6	32128-20	6	Nut-HF
7	1-613235	4	Washer
8	104-6373	1	Tube-Retainer
9	1-633630	2	Grommet-Brake
10	1-633543-03	1	Strap-Clutch, Brake
11	1-633545	2	Spacer
12	322-11	1	Screw-HH
13	1-603610	2	Washer-Spring
14	322-7	4	Screw-HH
15	3212-9	1	Screw-HH
16	107-4136	1	Washer
17	105-2635	1	Clutch / Brake ASM
18	44-5940	1	Pulley
19	608006	1	Key-Square
20	3256-23	5	Washer-Flat
21	94-5847-01	1	Cover-Pulley
24	92-6877	1	Valve-Drain, Oil

Ref.	Part Number	Qty.	Description
25	103-1966	1	Adapter
26	106-5517	1	Decal-Surface, Hot
27		1	Engine-Kawasaki, FH430V-As53 ●■
28	322-9	1	Screw-HH
29	2412-87	1	Clamp-Cable
30	3255-8	1	Washer-Lock
33	56-6360	1	Filter-Fuel
34	2412-72	1	Clip-Closed, Insulated
35	12-3270	2	Screw
38	115-4150-03	1	Muffer Shield ASM
39	115-4154-03	1	Bracket-Muffer
40	322-3	4	Screw-HH
41	94-2413	4	U-Nut
42	2412-134	1	Clamp-R
43	3290-378	5	Tie-Cable
46	218-578	1	Fuse-10 Amp
99	103-1964	1	Hose-Drain, Oil

● Not serviced separately

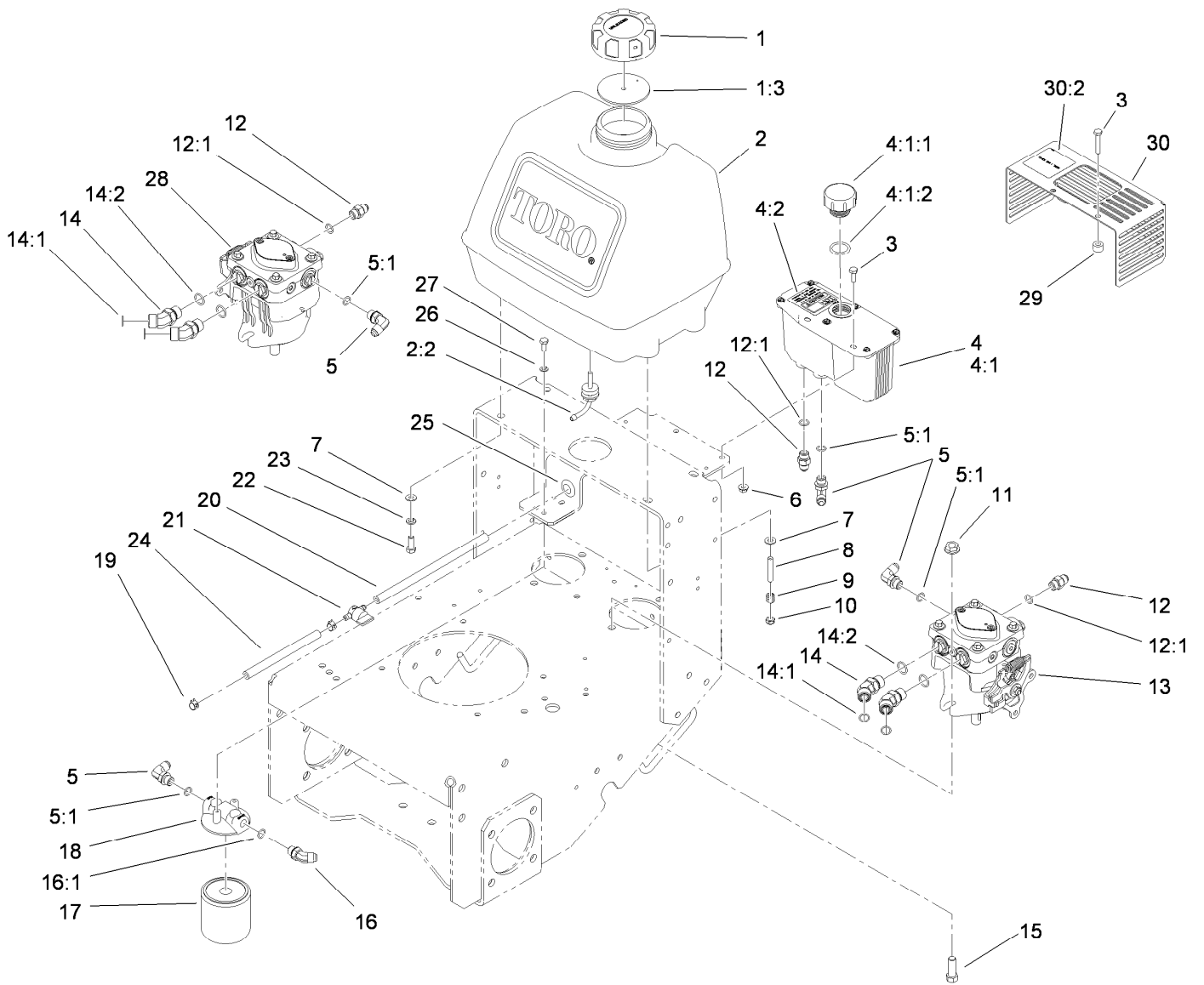
■ Obtain parts from [www.kawpowerepc.com](http://www.kawpowerepc.com)



## Fuel System, Hydraulic Pump and Filter Assembly

Ref.	Part Number	Qty.	Description	Ref.	Part Number	Qty.	Description
1	88-3980	1	Gas Cap ASM	12:1	237-42	1	O-Ring
1:3	88-4010	1	Gasket-Cap, Gas	13	115-4480	1	Pump-Hydraulic
2	106-0730	1	Fuel Tank ASM	14	340-101	4	Fitting-HYD, 45 DEG
2:2	103-2605	1	Fitting-Fuel, Bulkhead	14:1	237-30	1	O-Ring
3	321-9	2	Screw-HH	14:2	237-79	1	O-Ring
4	107-8433	1	HYD Reservoir ASM	15	324-5	4	Screw-HH
4:1		1	Reservoir-HYD ●	16	353-212	1	Fitting-HYD, 45 DEG
4:1:1	103-1948	1	Cap-Reservoir, HYD	16:1	237-42	1	O-Ring
4:1:2	103-1949	1	Gasket-Cap	17	1-633750	1	Filter-Oil, HYD
4:2	115-4212	1	Decal-Warning	17	1-633752	1	Filter-HYD, Winter
5	353-374	4	Elbow-90 DEG	18	104-7836	1	Head-Filter
5:1	237-42	1	O-Ring	19	2412-98	4	Clamp
6	32128-33	2	Nut-HF	20	110-4894	1	Hose-Fuel
7	3256-23	4	Washer-Flat	21	1-603770	1	Valve-Fuel
8	104-8121	2	Stud-Threaded	22	322-4	2	Screw-HH
9	1-633349	2	Spring-Tank, Fuel	23	3253-4	2	Washer-Lock
10	3296-47	2	Nut-Lock, NI	24	107-0588	1	Hose-Fuel
11	32128-42	4	Nut-HF	25	112-7069	1	Grommet
12	353-384	3	Fitting-Straight	26	3253-3	2	Washer-Lock

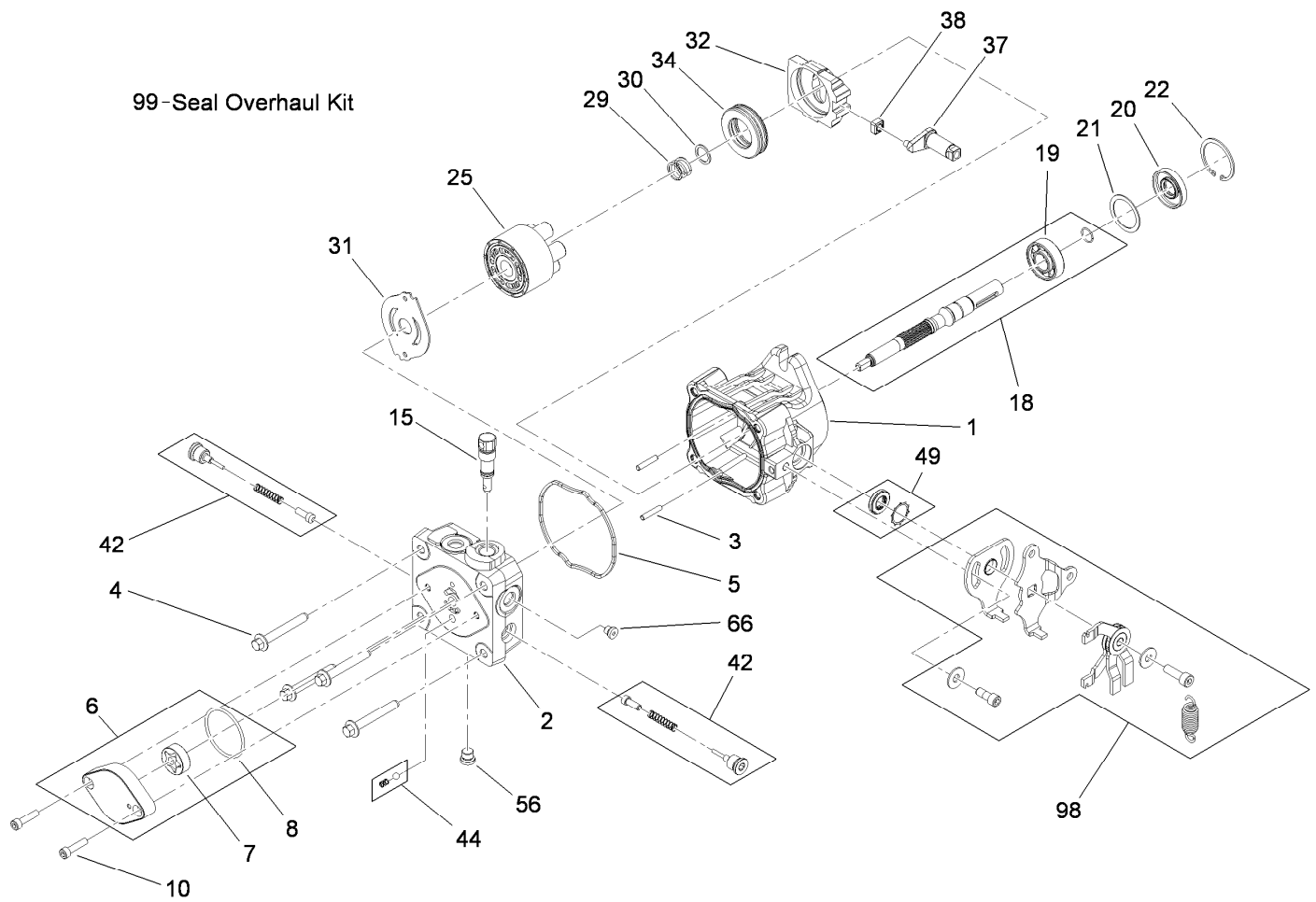
● Not serviced separately



## Fuel System, Hydraulic Pump and Filter Assembly (continued)

Ref.	Part Number	Qty.	Description	Ref.	Part Number	Qty.	Description
27	321-3	2	Screw-HH	30	112-7060	1	Shield ASM
28	115-4481	1	Pump-Hydraulic	30:2	115-4212	1	Decal-Warning
29	105-3619	2	Spacer				

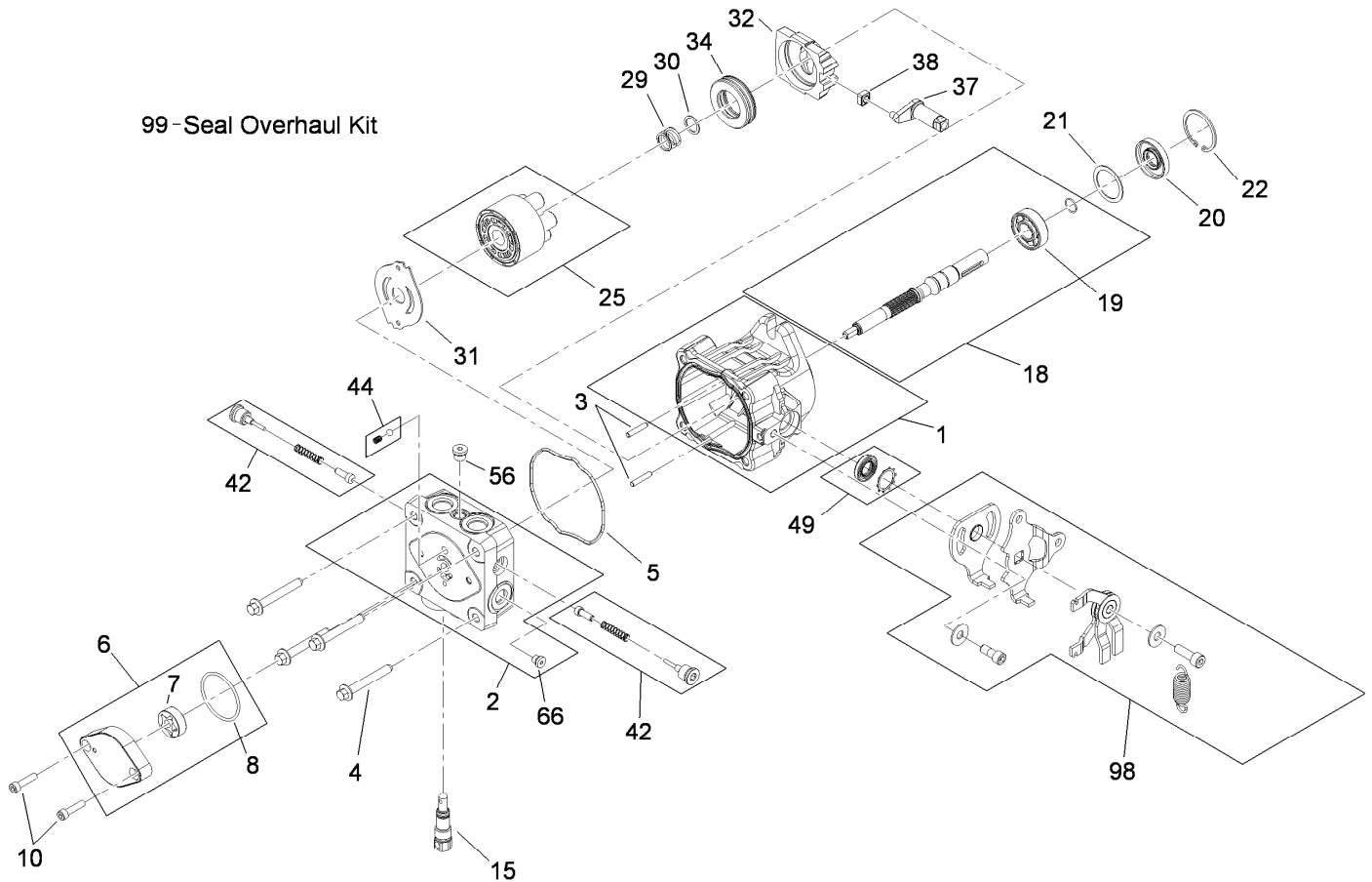
● Not serviced separately



## Hydraulic Pump Assembly No. 115-4480

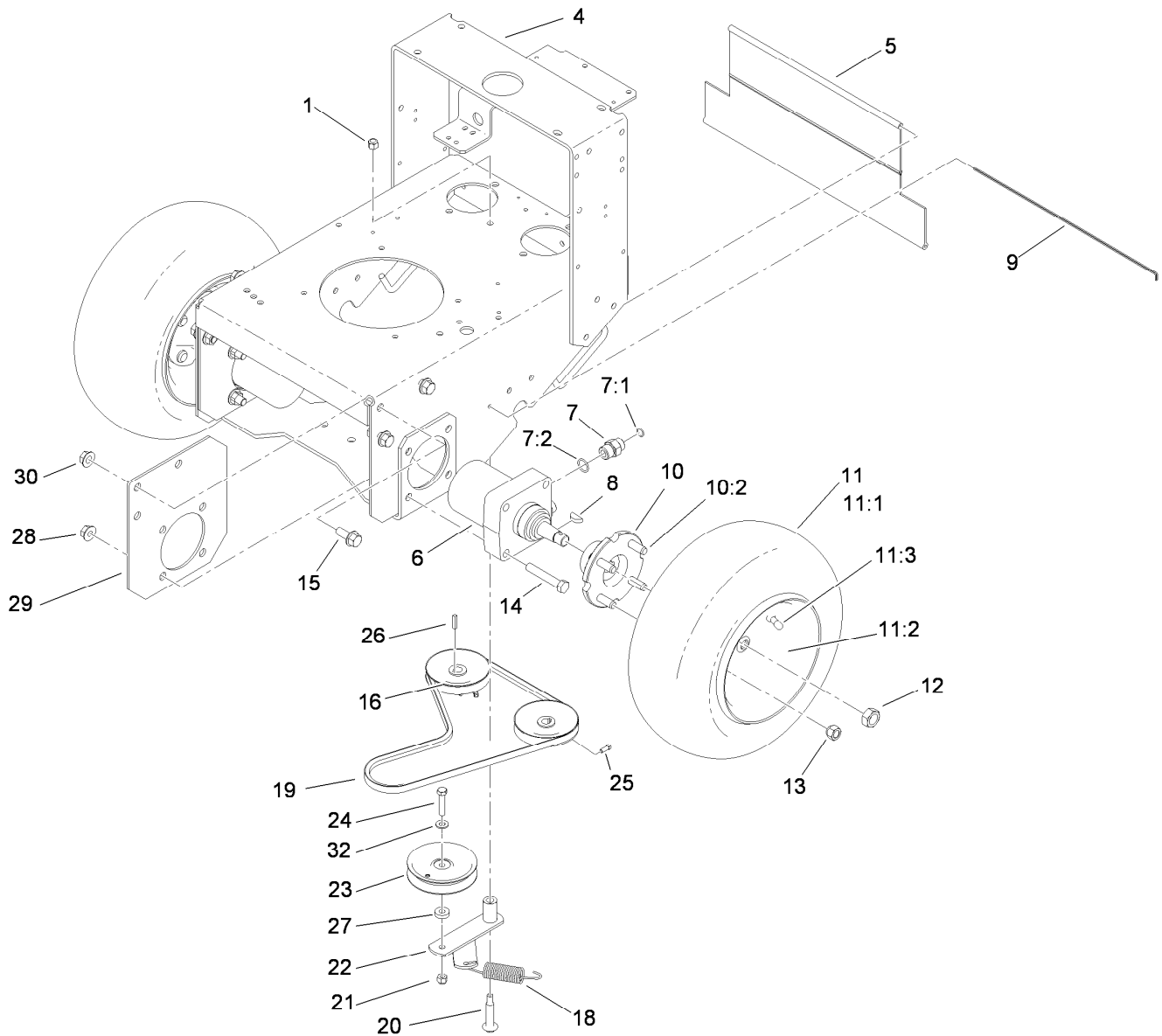
Ref.	Part Number	Qty.	Description	Ref.	Part Number	Qty.	Description
1	115-4464	1	Housing Kit	29	94-1936	1	Spring-Block
2	106-8752	1	End Cap Kit (W/Poppets)	30	94-1937	1	Washer-Thrust, Block
3	106-8753	2	Pin-Headless, Straight	31	105-6185	1	Plate-Valve
4	106-8754	4	Bolt-HF	32	94-1907	1	Swashplate-Variable
5	106-8755	1	O-Ring	34	94-6922	1	Bearing-Thrust
6	106-8756	1	Charge Pump Kit	37	115-4458	1	Arm-Trunnion, Tapered Square
7	104-2122	1	Gerotor ASM	38	94-1910	1	Guide-Slot
8	106-8757	1	O-Ring	42	98-3252	2	Valve-Check (W/Poppet)
10	104-2111	2	Capscrew	44	106-8760	1	Charge Relief Valve Kit
15	106-8759	1	Bypass Valve Kit	49	114-8155	1	Trunnion Seal Kit
18	103-2664	1	Input Shaft Kit	56	106-8762	1	Plug-HSH
19	104-5311	1	Bearing-Ball	66	106-8763	1	Plug-HSH
20	104-5310	1	Seal-Lip	98	115-4459	1	Kit-Return
21	104-5308	1	Spacer	99	105-6184	1	Seal Overhaul Kit
22	104-5309	1	Ring-Retaining				
25	103-2666	1	Cylinder Block Kit				

99-Seal Overhaul Kit



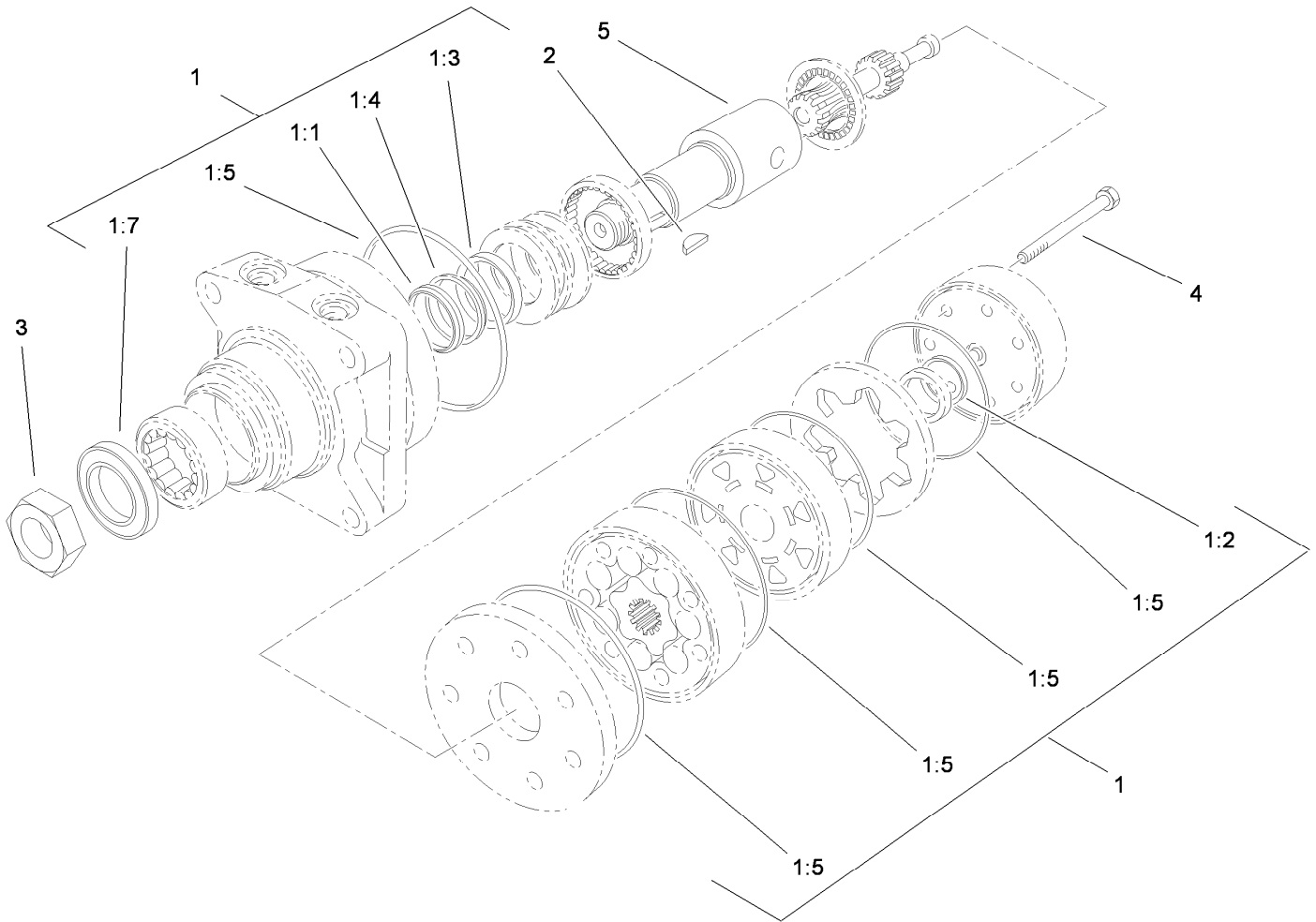
## Hydraulic Pump Assembly No. 115-4481

Ref.	Part Number	Qty.	Description	Ref.	Part Number	Qty.	Description
1	115-4464	1	Housing Kit	29	94-1936	1	Spring-Block
2	106-8752	1	End Cap Kit (W/Poppets)	30	94-1937	1	Washer-Thrust, Block
3	106-8753	2	Pin-Headless, Straight	31	105-6185	1	Plate-Valve
4	106-8754	4	Bolt-HF	32	94-1907	1	Swashplate-Variable
5	106-8755	1	O-Ring	34	94-6922	1	Bearing-Thrust
6	106-8756	1	Charge Pump Kit	37	115-4458	1	Arm-Trunnion, Tapered Square
7	104-2122	1	Gerotor ASM	38	94-1910	1	Guide-Slot
8	106-8757	1	O-Ring	42	98-3252	2	Valve-Check (W/Poppet)
10	104-2111	2	Capscrew	44	106-8760	1	Charge Relief Valve Kit
15	106-8759	1	Bypass Valve Kit	49	114-8155	1	Trunnion Seal Kit
18	103-2664	1	Input Shaft Kit	56	106-8762	1	Plug-HSH
19	104-5311	1	Bearing-Ball	66	106-8763	1	Plug-HSH
20	104-5310	1	Seal-Lip	98	115-4459	1	Kit-Return
21	104-5308	1	Spacer	99	105-6184	1	Seal Overhaul Kit
22	104-5309	1	Ring-Retaining				
25	103-2666	1	Cylinder Block Kit				



## Pump Drive and Wheel Assembly

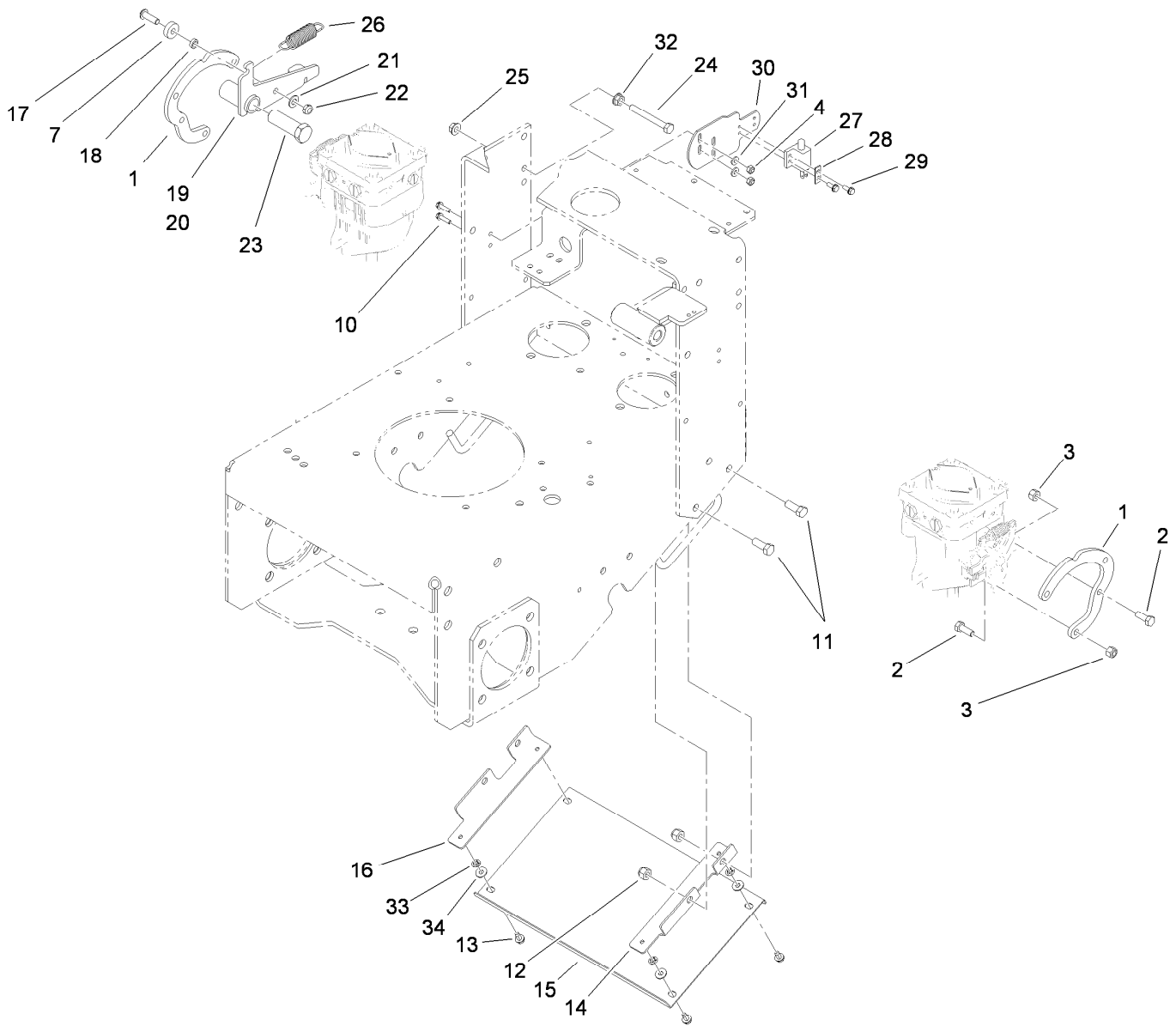
Ref.	Part Number	Qty.	Description	Ref.	Part Number	Qty.	Description
1	3296-6	1	Nut-Lock	14	325-12	8	Screw-HH
4	114-0243-01	1	Frame ASM	15	3234-32	6	Screw-HHF
5	95-1526	1	Shield-Trailing	16	105-5648	2	Pulley-Pump
6	104-1171	2	Motor-Wheel	18	68-9950	1	Spring-Traction
7	340-6	4	Fitting-HYD, Straight	19	110-5049	1	Belt-V
7:1	237-30	1	O-Ring	20	27-6230	1	Bolt-Wheel
7:2	237-80	1	O-Ring	21	3296-39	1	Nut-Lock, NI
8	3257-8	2	Key-Woodruff	22	86-4770	1	Idler Lever ASM
9	95-1529	1	Rod-Shield	23	93-1622	1	Pulley-Idler
10	105-0800	2	Wheel Hub / Stud ASM	24	323-9	1	Screw-HH
10:2	10-6830	4	Stud-Type, Drive	25	3241-5	4	Screw-Set
11	106-0892	2	Wheel And Tire ASM	26	1-807272	2	Key
11:1	104-6322	1	Tire	27	9202204	1	Washer
11:2	106-0893	1	Wheel	28	32128-49	8	Nut-HHF
11:3	232-27	1	Stem-Valve	29	108-6657-01	2	Plate-Frame
12	85-7310	2	Nut-Motor, Wheel	30	32128-23	6	Nut-HF
13	242-50	8	Nut-Lug	32	3256-24	1	Washer-Flat



## Hydraulic Motor Assembly No. 104-1171

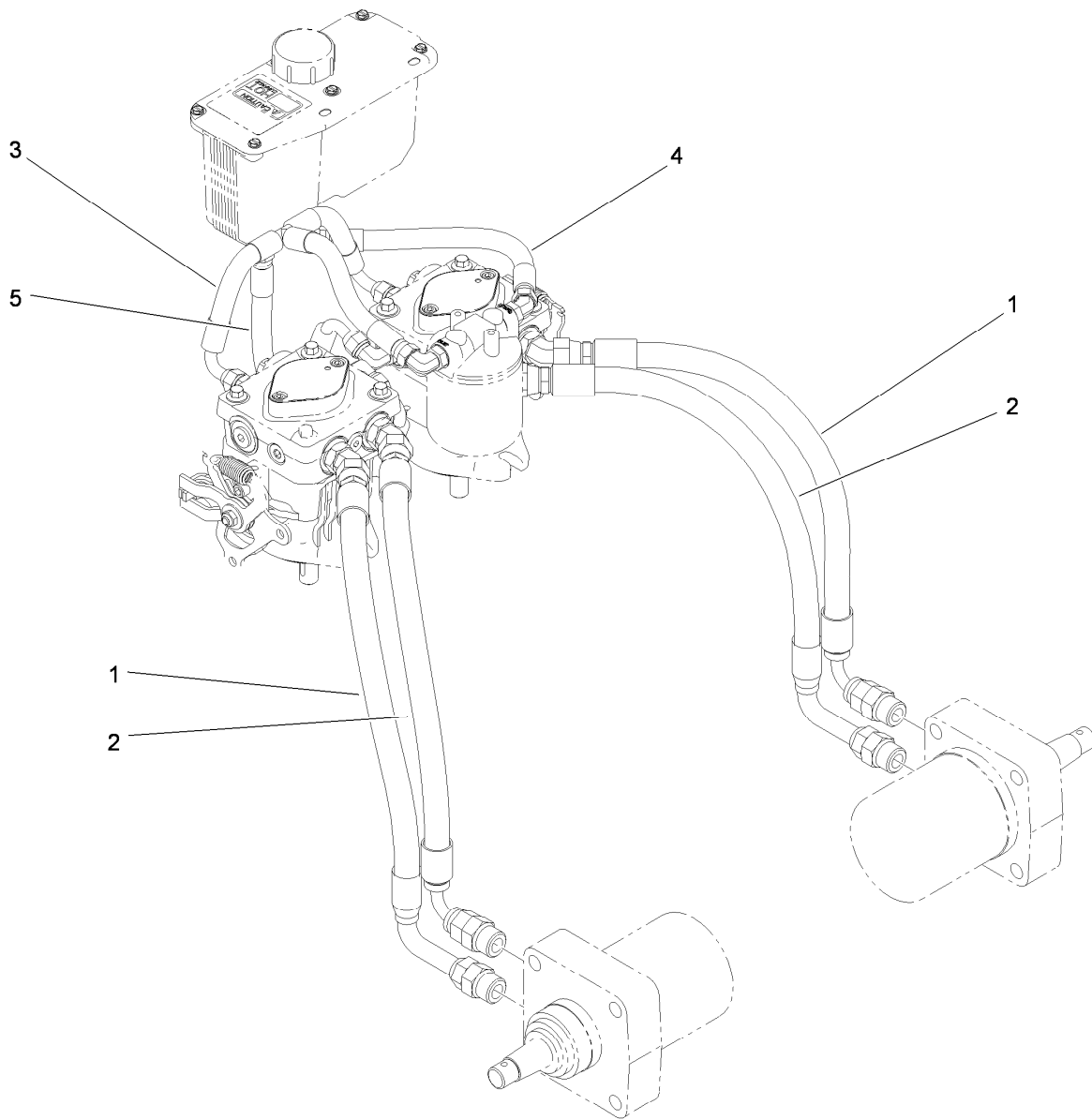
Ref.	Part Number	Qty.	Description
1	1-000119	1	Seal Kit
1:1		1	Ring-Back Up ●
1:2		1	Seal-Commutator ●
1:3		1	Seal-Shaft (Viton) ●
1:4		1	Washer-Back Up, Steel ●
1:5		5	Ring-Seal (Viton) ●
1:7		1	Seal-Dirt And Water ●
2	3257-8	1	Key-Woodruff
3	85-7310	1	Nut-Motor, Wheel
4	106-5549	6	Bolt-Special
5	106-8764	1	Shaft-Coupling

● Not serviced separately



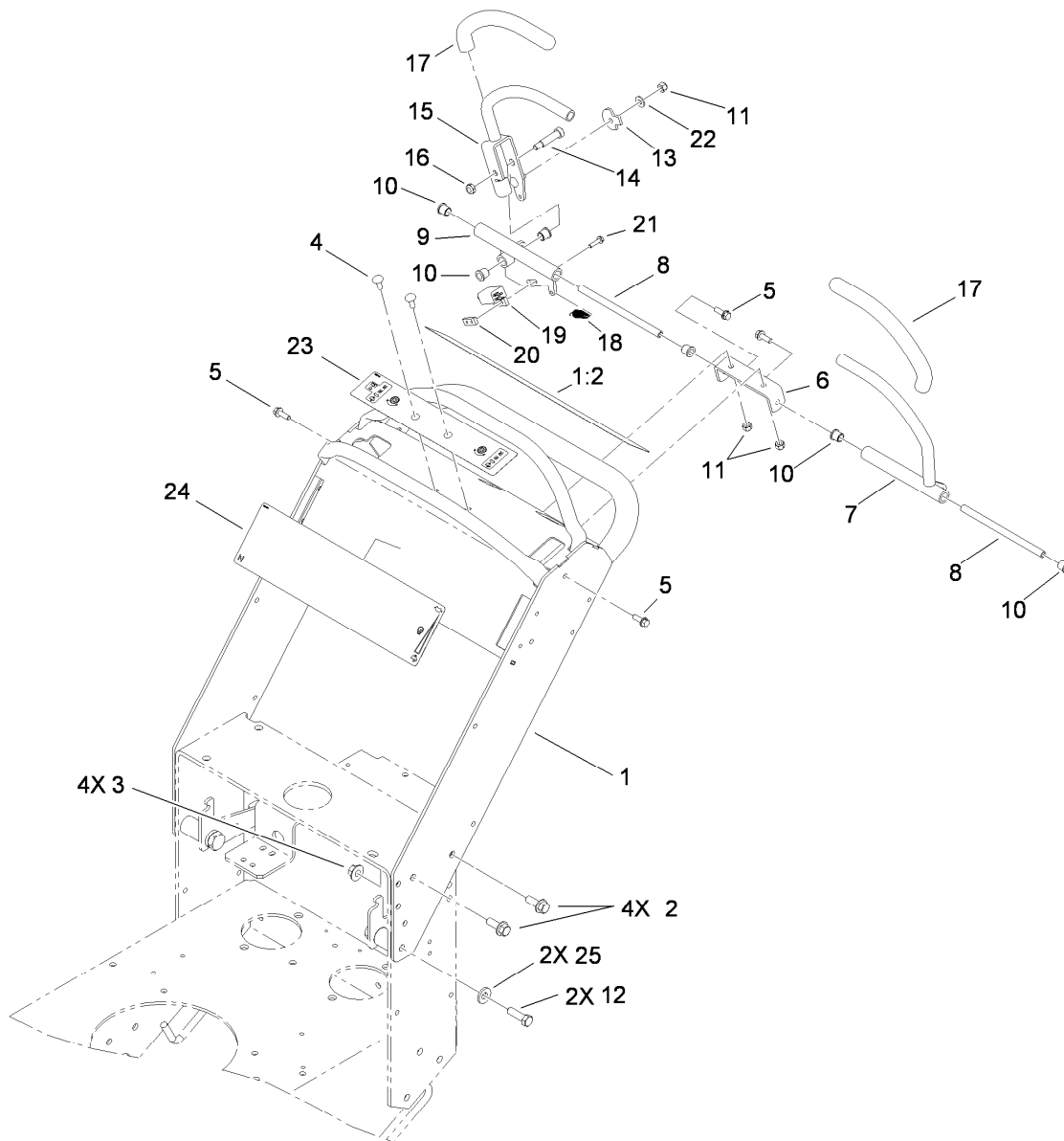
## Lower Control Assembly

<i>Ref.</i>	<i>Part Number</i>	<i>Qty.</i>	<i>Description</i>	<i>Ref.</i>	<i>Part Number</i>	<i>Qty.</i>	<i>Description</i>
1	112-9722	2	Bracket-Adapter, Pump	20	112-9725	1	LH Detent Arm ASM
2	322-4	4	Screw-HH	21	3256-23	2	Washer-Flat
3	3296-29	4	Nut-Lock, NI	22	3296-47	2	Nut-Lock, NI
4	3296-2	4	Nut-Lock, NI	23	112-9724	2	Pin-Adjustment, Neutral
7	251-259	2	Bearing-Ball	24	322-13	2	Screw-HH
10	32105-13	4	Screw-HWH	25	32128-25	2	Nut-HF
11	323-6	4	Screw-HH	26	105-1210	2	Spring-Extension
12	3296-39	4	Nut-Lock, NI	27	1-513152	2	Switch-Closed, Normally
13	12-3270	4	Screw	28	82-4570	2	Plate-Switch
14	110-5012-01	1	Angle-Mounting, Left	29	32144-1	4	Screw-Taptite
15	110-5014-01	1	Panel-Bottom	30	112-9723-01	2	Bracket-Neutral
16	110-5013-01	1	Angle-Mounting, Right	31	3256-14	4	Washer-Flat
17	3274-104	2	Screw-HSBH	32	109-5715	2	Nut-HHF, Smooth
18	82-4240	2	Spacer-Bearing	33	106-8737	4	Nut-Retainer
19	112-9726	1	RH Detent Arm ASM	34	3256-1	4	Washer-Flat



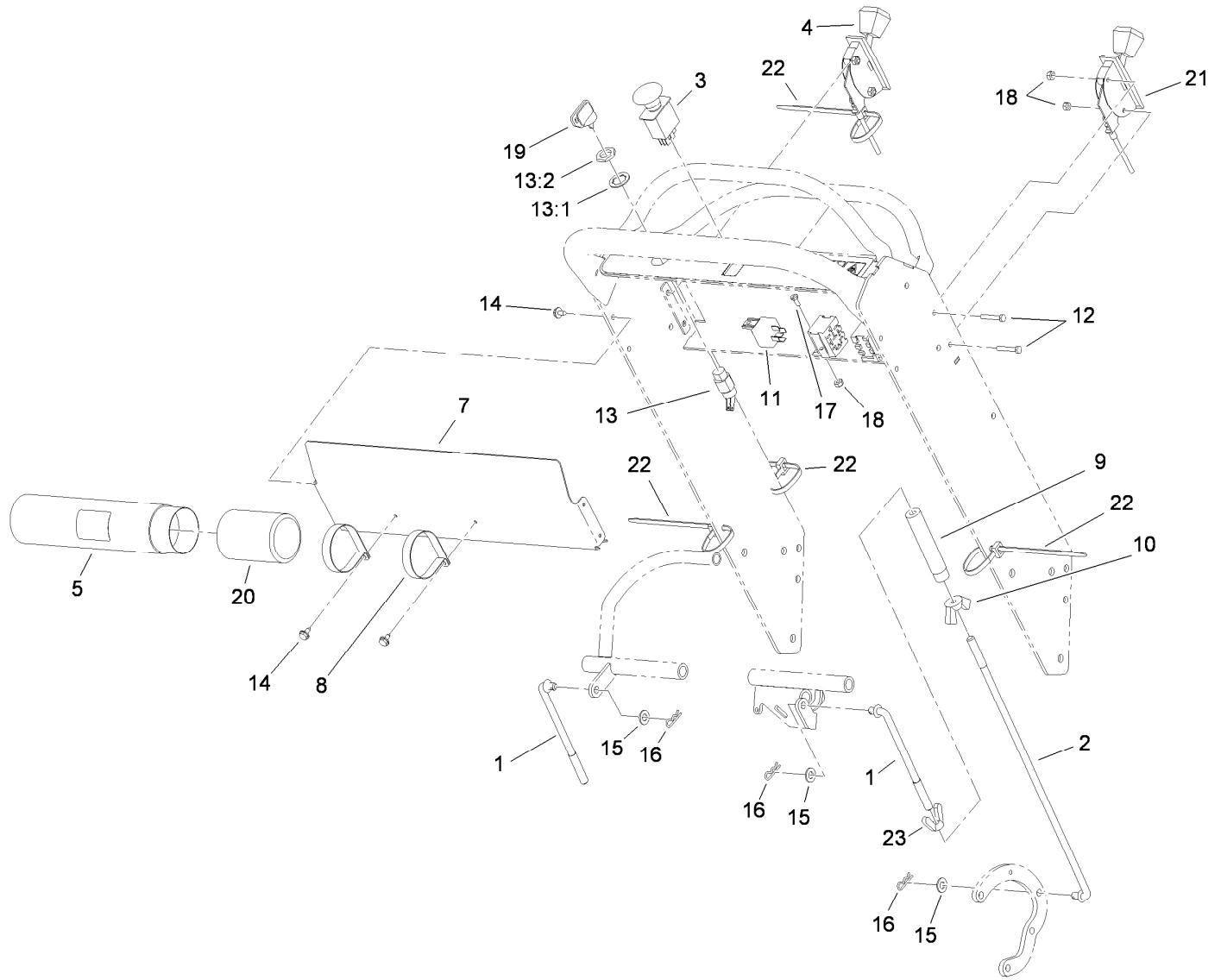
## Hydraulic Hose Assembly

<i>Ref.</i>	<i>Part Number</i>	<i>Qty.</i>	<i>Description</i>
1	112-9704	2	HYD Hose ASM
2	114-3430	2	HYD Hose ASM
3	114-3436	1	HYD Hose ASM
4	105-5699	1	HYD Hose ASM
5	114-3434	1	HYD Hose ASM



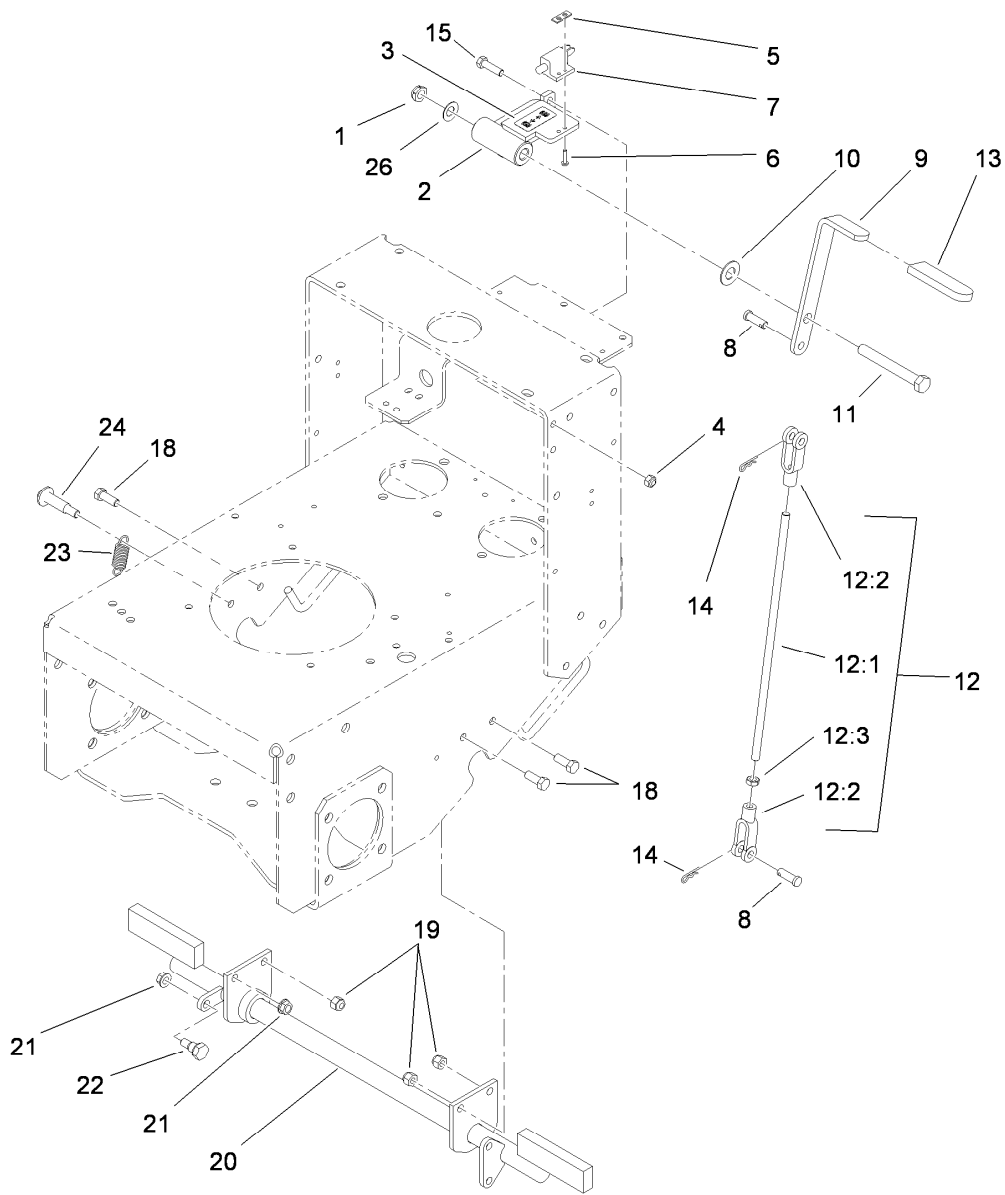
## Upper Control Assembly

Ref.	Part Number	Qty.	Description	Ref.	Part Number	Qty.	Description
1	114-3437	1	Handle ASM	13	114-0268	1	Cam-Lever
1:2	114-3422	1	Decal-Warning, Control	14	114-0239	1	Screw-HSH
2	3234-42	4	Screw-HHF	15	114-0238-03	1	Lever ASM
3	32128-43	4	Nut-Flange	16	3296-47	1	Nut-Lock, NI
4	3229-1	2	Screw-CARR	17	114-0241	2	Grip-Lever
5	3234-4	4	Screw-HHF	18	114-0249	1	Spring-Extension
6	114-0235	1	Bracket-Support	19	1-513152	1	Switch-Closed, Normally
7	114-0272-03	1	Control Lever ASM	20	1-633181	1	Plate-Tapped
8	114-0260	2	Shaft-Pivot	21	32105-13	2	Screw-HWH
9	114-0234	1	Motion Control ASM	22	3256-22	1	Washer-Flat
10	103-9928	6	Bearing	23	114-3424	1	Decal-Control
11	3296-42	3	Nut-Lock, NI	24	114-3442	1	Decal-Panel, Control
12	323-7	2	Screw-HH	25	98-5975	2	Washer-Belleville



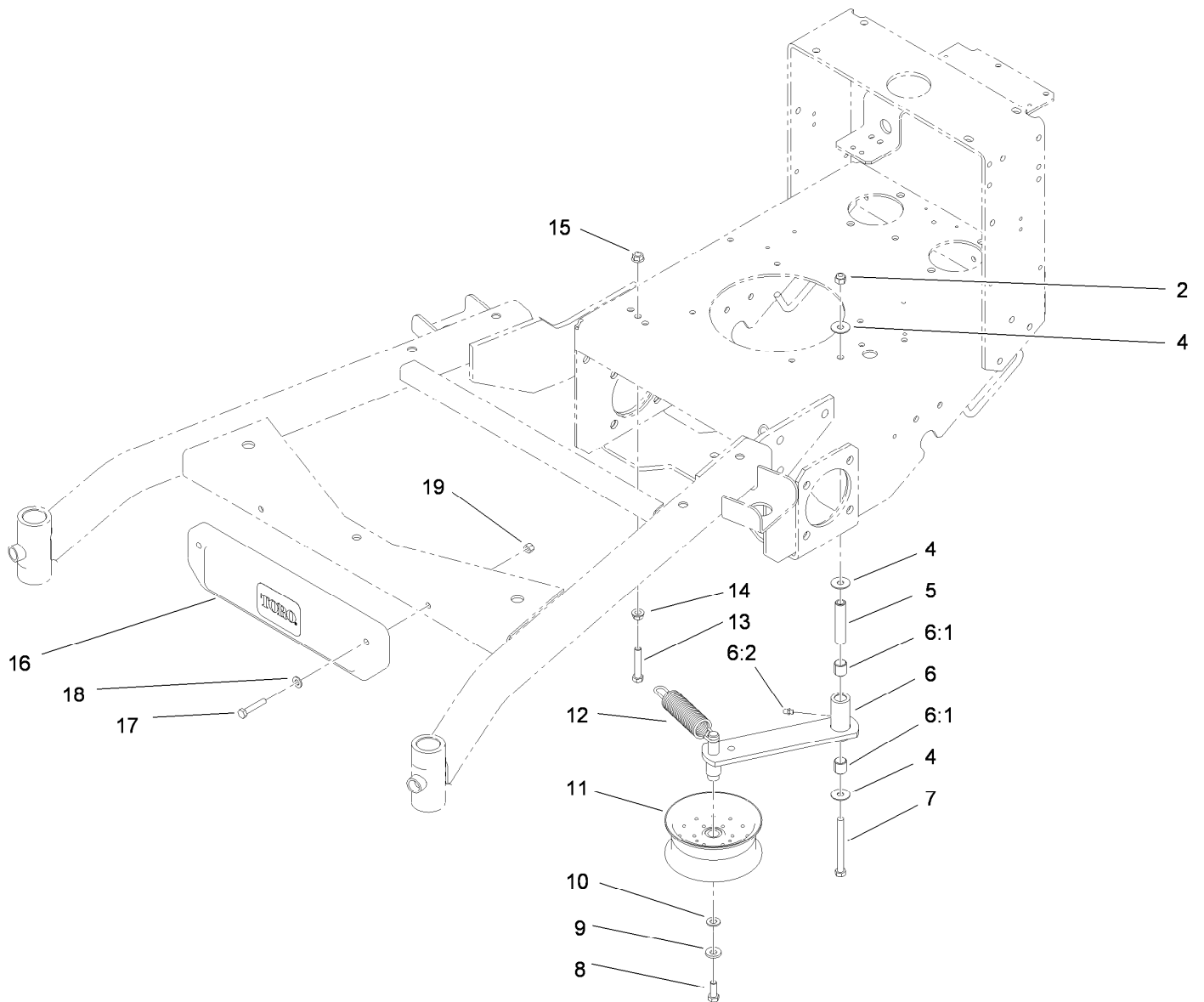
## Control Panel Assembly

<i>Ref.</i>	<i>Part Number</i>	<i>Qty.</i>	<i>Description</i>	<i>Ref.</i>	<i>Part Number</i>	<i>Qty.</i>	<i>Description</i>
1	114-0275	2	Rod-Control, Upper	13:1	218-461	1	Nut-HH
2	114-0276	2	Rod-Control, Lower	13:2	3254-5	1	Washer-Tooth, Internal
3	114-0279	1	Switch-PTO	14	32104-76	6	Screw
4	110-4994	1	Cable-Throttle	15	3256-23	4	Washer-Flat
5	104-7050	1	Tube-Manual	16	3290-307	4	Pin-Hair
7	114-0270-03	1	Cover-Panel, Control	17	32105-8	2	Screw-SHH
8	2412-120	2	R-Clamp	18	3296-2	6	Nut-Lock, NI
9	95-1504	2	Turnbuckle	19	63-8360	1	Key-Ignition
10	32103-3	2	Nut-Wing	20	104-7048	1	Cap-Housing
11	105-4145	2	Relay	21	110-4995	1	Cable-Choke
12	3290-360	4	Screw-HH	22	3290-378	4	Tie-Cable
13	29-5560	1	Switch-On / Off	23	114-0281	2	Nut-Wing, LH



## Parking Brake Assembly

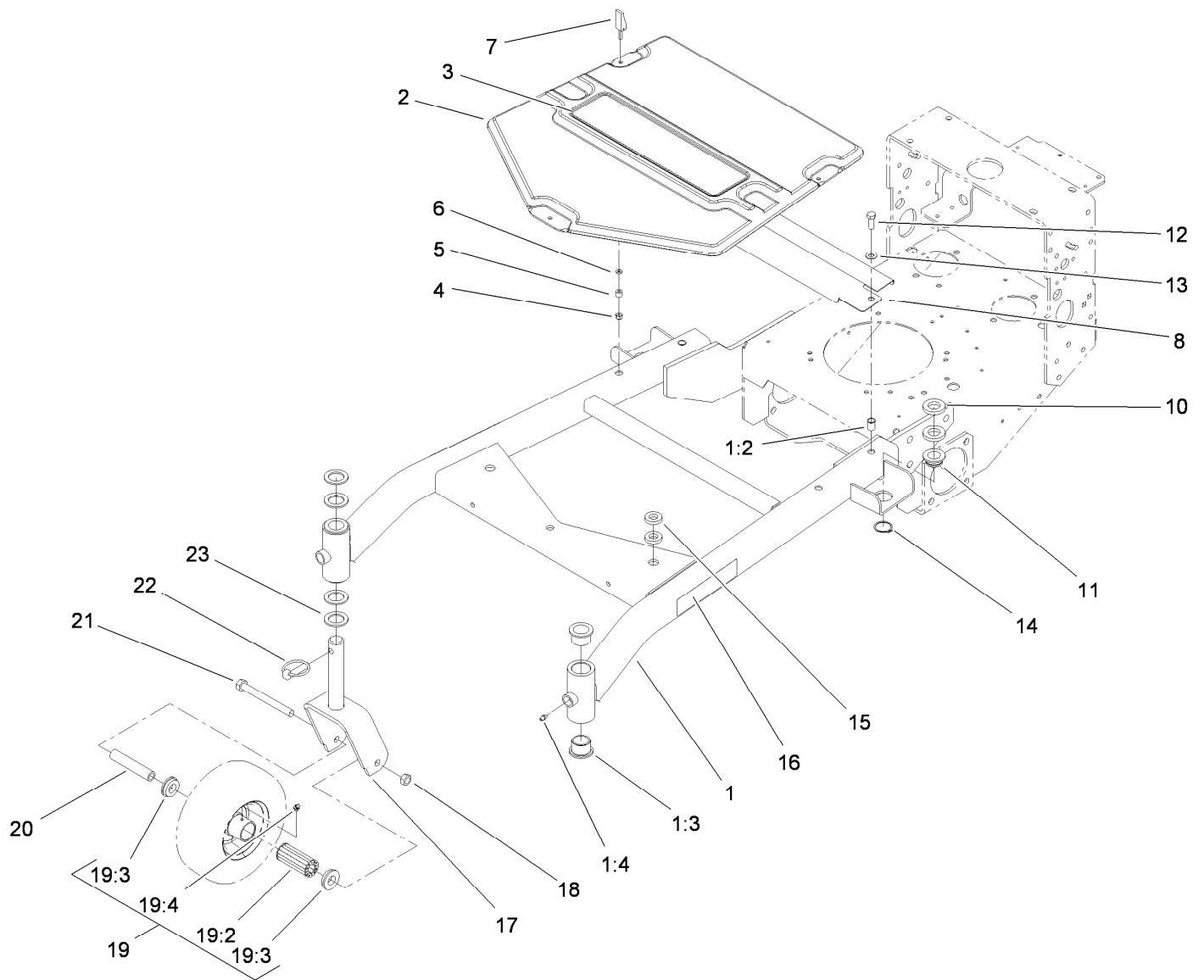
<i>Ref.</i>	<i>Part Number</i>	<i>Qty.</i>	<i>Description</i>	<i>Ref.</i>	<i>Part Number</i>	<i>Qty.</i>	<i>Description</i>
1	3296-45	1	Nut-Lock, NI	12:2	1-633131	2	Yoke-Linkage, Brake
2	112-8716-01	1	Support-Handle	12:3	3219-3	1	Nut-Hex
3	112-8721	1	Decal-Brake	13	1-303020	1	Grip-Lever
4	3296-29	2	Nut-Lock, NI	14	3290-307	2	Pin-Hair
5	1-633181	1	Plate-Tapped	15	322-6	2	Screw-HH
6	32105-13	2	Screw-HWH	18	323-6	3	Screw-HH
7	1-513152	1	Switch-Closed, Normally	19	3296-39	3	Nut-Lock, NI
8	1-808285	2	Pin-Clevis	20	110-4976-01	1	Parking Brake ASM
9	106-0671-01	1	Handle-Brake	21	3290-357	2	Nut-HHF, Whiz
10	257-7	1	Bearing-Thrust	22	27-5240	1	Bolt-Shoulder
11	325-17	1	Screw-HH	23	613386	1	Spring-Brake
12	115-1465	1	Brake Rod ASM	24	56-6590	1	Bolt-Wheel
12:1	108-2747	1	Rod-Brake	26	112-9972	1	Washer-Conical, Spring



## Power-Take-Off Idler and Weight Assembly

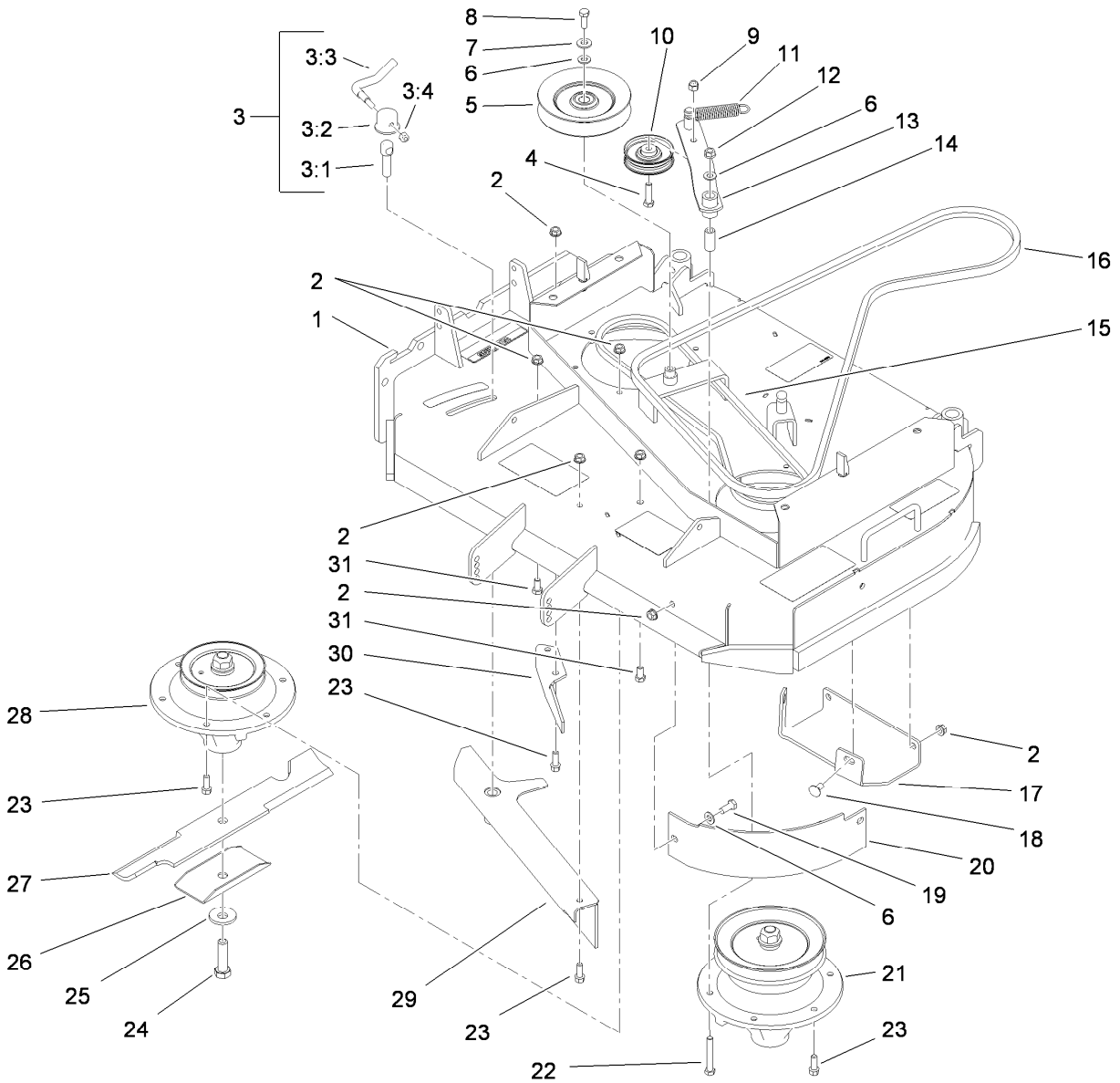
Ref.	Part Number	Qty.	Description
2	3296-39	1	Nut-Lock, NI
4	52-2860	3	Washer
5	104-6377	1	Tube-Idler
6	112-7055	1	Idler Arm ASM
6:1	1-513034	2	Sleeve-Bearing
6:2	302-5	1	Fitting-Grease
7	323-42	1	Screw-HH
8	323-6	1	Screw-HH
9	98-5975	1	Washer-Belleville
10	3256-24	1	Washer-Flat

Ref.	Part Number	Qty.	Description
11	1-413099	1	Pulley-Idler
12	105-8443	1	Spring-Extension
13	323-10	1	Screw-HH
14	3290-357	1	Nut-HHF, Whiz
15	32128-21	1	Nut-HF
16	112-7059-01	1	Weight-Cast
17	322-9	2	Screw-HH
18	3256-23	2	Washer-Flat
19	3296-29	2	Nut-Lock, NI



## Carrier Frame Assembly

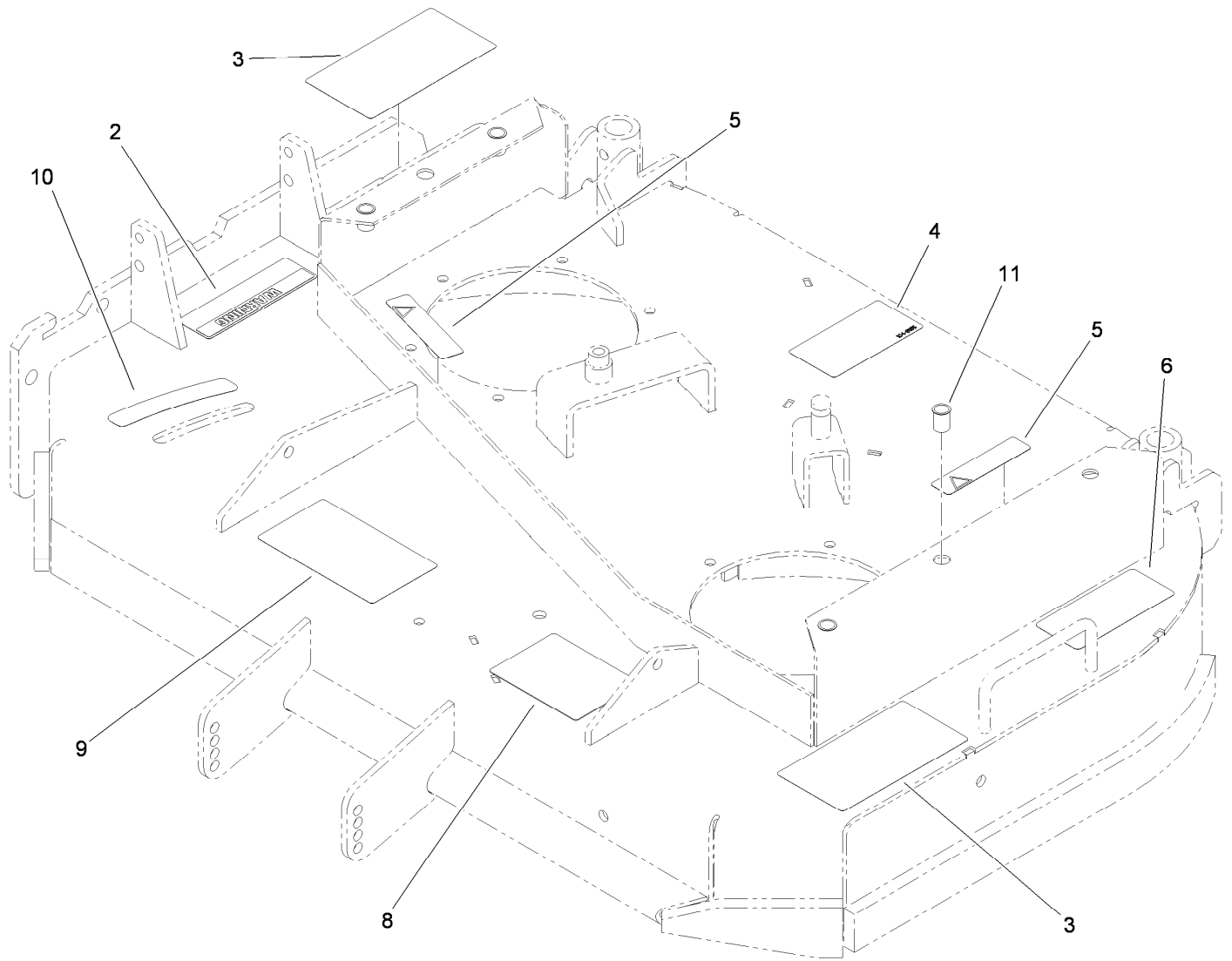
<i>Ref.</i>	<i>Part Number</i>	<i>Qty.</i>	<i>Description</i>	<i>Ref.</i>	<i>Part Number</i>	<i>Qty.</i>	<i>Description</i>
1	110-6960	1	Carrier Frame ASM	13	3256-24	2	Washer-Flat
1:2	32148-9	2	Insert-Nut	14	32120-33	2	Ring-Retaining
1:3	94-1291	4	Bushing	15	1-323539	4	Spacer
1:4	302-5	2	Fitting-Grease	16	106-0636	2	Decal
2	110-6970	1	Cover-Frame, Carrier	17	105-3159-01	2	Castor Fork ASM
3	112-9710	1	Decal	18	32153-5	2	Nut-Hex
4	1-804254	3	Nut	19	110-5024	2	Wheel And Tire ASM
5	106-6778	3	Bushing-Latch, Swell	19:2	112-7066	1	Bearing-Roller
6	99-3058	3	Washer	19:3	1-513810	2	Bushing
7	106-6777	3	Handle-Latch, Swell	19:4	302-61	1	Zerk
8	110-6971-01	1	Shield-Belt	20	100-6453	2	Bushing-Spanner
10	104-1105	4	Spacer-Support, Deck	21	325-19	2	Screw-HH
11	1-513336	2	Bushing-Deck	22	283-71	2	Pin-Lynch
12	323-6	2	Screw-HH	23	3-6781	8	Washer-Thrust



## Deck Drive and Baffle Assembly

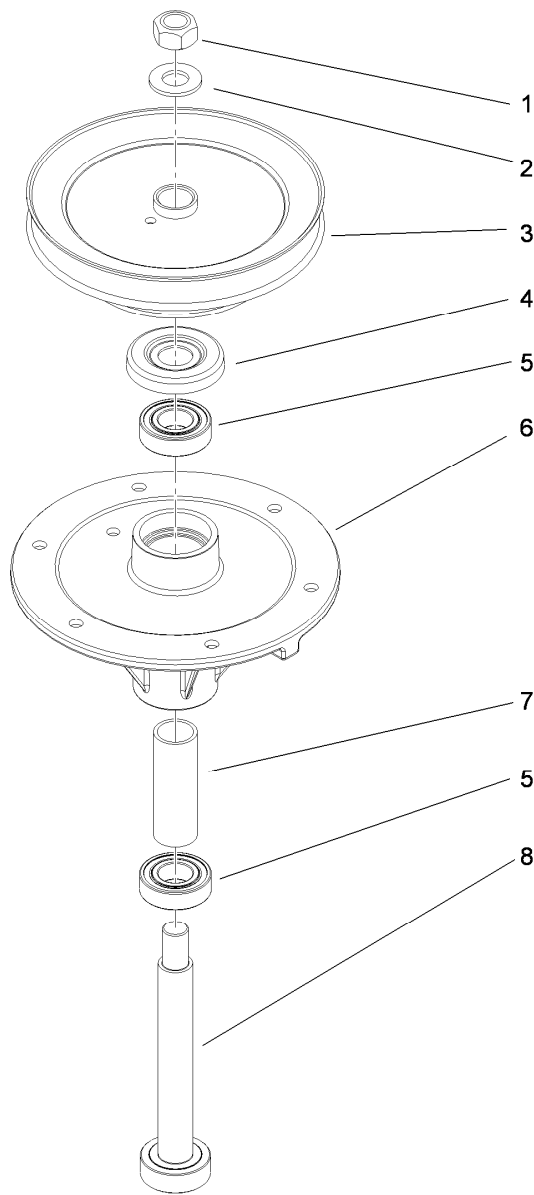
Ref.	Part Number	Qty.	Description
1	115-4230	1	91Cm Deck And Decal ASM
2	3290-357	22	Nut-HHF, Whiz
3	107-1664	1	Lever ASM
3:1	106-3239	1	Screw-Lock
3:2	107-1644	1	Cap-Lock
3:3	106-3241	1	Lever-Lock
3:4	3296-29	1	Nut-Lock, NI
4	323-8	1	Screw-HH
5	1-633166	1	Pulley-Idler
6	3256-24	4	Washer-Flat
7	98-5975	1	Washer-Belleville
8	323-6	1	Screw-HH
9	3296-39	1	Nut-Lock, NI
10	51-3660	1	Pulley-Idler
11	105-2673	1	Spring-Extension
12	32128-21	1	Nut-HF
13	105-0889	1	Idler Arm ASM
14	51-3641	1	Sleeve-Pivot, Idler

Ref.	Part Number	Qty.	Description
15	110-6953	1	Belt-V
16	105-0886	1	Belt-Drive, PTO
17	110-2037-01	1	Plate-Skid
18	3231-1	4	Screw-CARR
19	323-5	2	Screw-HH
20	110-6903-03	1	Baffle-Front, LH
21	110-6950	1	Spindle ASM
22	323-12	1	Screw-HH
23	92-1624	14	Screw-HWH
24	51-4060	2	Screw-Blade
25	103-0865	2	Washer-Blade Bolt, Heavy
26	108-2727	2	Stiffener-Blade
27	105-7781-03	2	Blade-18 Inch (Hi Flow)
28	110-0728	1	Spindle ASM
29	110-6955-03	1	Adjust Baffle ASM
30	110-0754-01	1	Baffle-Discharge
31	323-4	2	Screw-HH



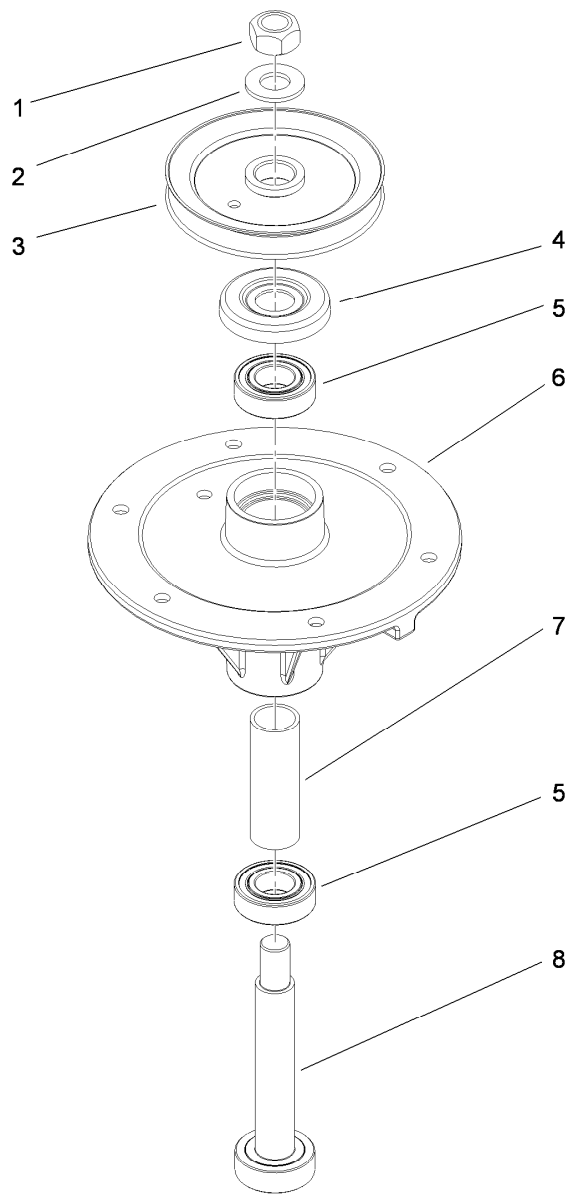
## Deck Assembly No. 115-4230

<i>Ref.</i>	<i>Part Number</i>	<i>Qty.</i>	<i>Description</i>
2	93-7828	1	Decal-Warning, Deflector
3	114-3449	2	Decal-Danger
4	104-8185	1	Decal
5	98-1977	2	Decal-Warning
6	93-7818	1	Decal-Torque, Blade Bolt
8	99-8939	1	Decal-Anti Scalp
9	110-2068	1	Decal-Adjustment, Baffle
10	110-2067	1	Decal-Setting, Baffle
11	32148-9	4	Insert-Nut



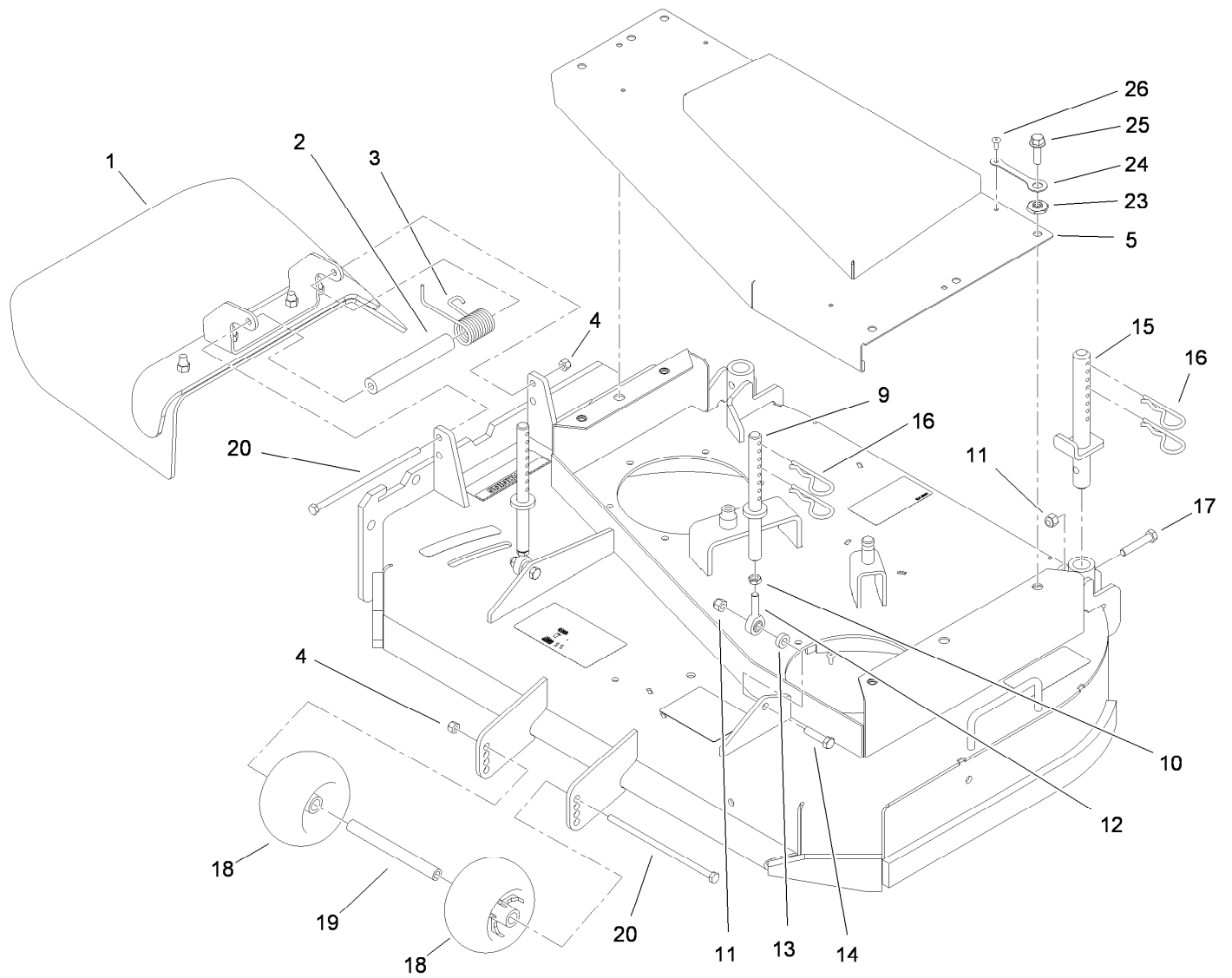
## Spindle Assembly No. 110-6950

<i>Ref.</i>	<i>Part Number</i>	<i>Qty.</i>	<i>Description</i>
1	3219-7	1	Nut-Hex
2	7-4150	1	Washer
3	110-6951	1	Pulley And Hub ASM
4	106-0873	1	Shield-Bearing
5	104-6325	2	Bearing-Ball
6	108-6696	1	Housing-Spindle
7	110-0727	1	Spacer-Bearing
8	110-0725	1	Shaft-Spindle



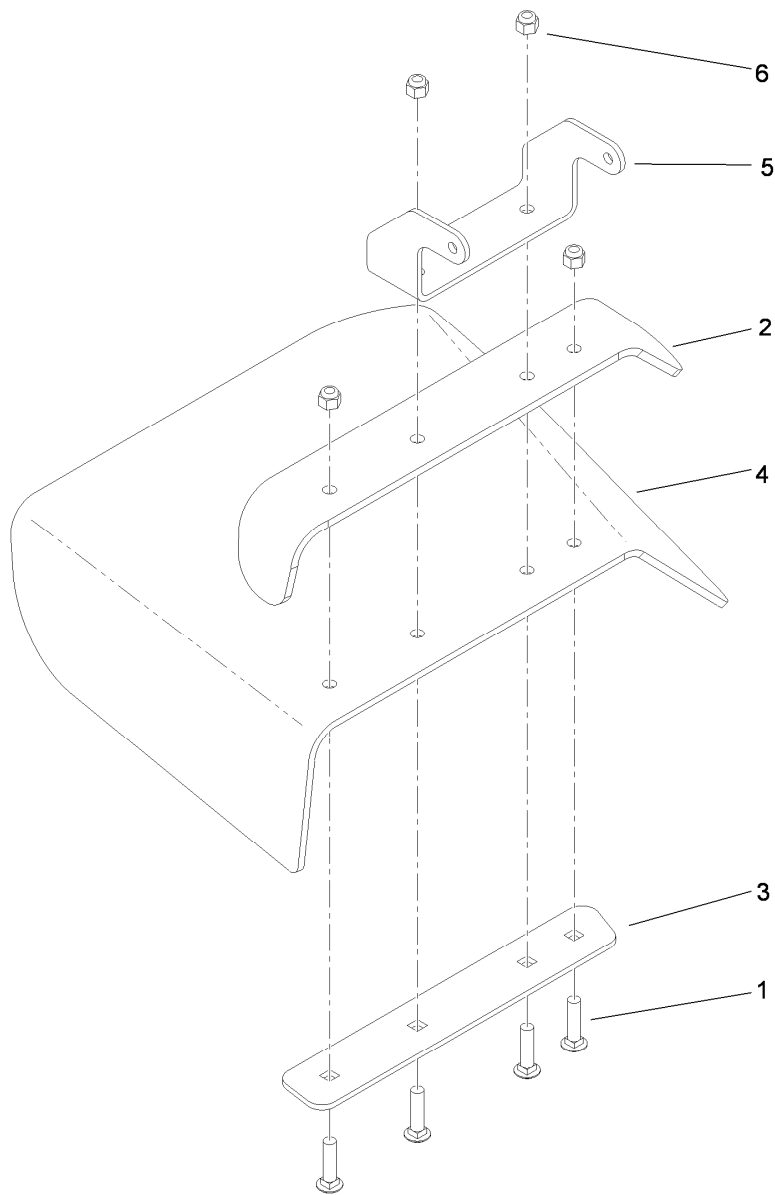
## Spindle Assembly No. 110-0728

<i>Ref.</i>	<i>Part Number</i>	<i>Qty.</i>	<i>Description</i>
1	3219-7	1	Nut-Hex
2	7-4150	1	Washer
3	104-1181	1	Pulley ASM
4	106-0873	1	Shield-Bearing
5	104-6325	2	Bearing-Ball
6	108-6696	1	Housing-Spindle
7	110-0727	1	Spacer-Bearing
8	110-0726	1	Shaft-Spindle



## Deck Deflector, Roller and Cover Assembly

<i>Ref.</i>	<i>Part Number</i>	<i>Qty.</i>	<i>Description</i>	<i>Ref.</i>	<i>Part Number</i>	<i>Qty.</i>	<i>Description</i>
1	110-0790	1	Deflector ASM	15	110-2086	2	Rear Pin ASM
2	105-4622	1	Spacer	16	3290-256	6	Pin-Hair
3	104-8554	1	Spring-Torsion	17	323-10	2	Screw-HH
4	3296-29	2	Nut-Lock, NI	18	1-603299	2	Roller-Scalp, Anti
5	119-6512-01	1	Deck Belt Cover ASM	19	98-5967	1	Spacer-Wheel
9	108-2674	2	Front Pin ASM	20	322-50	2	Screw-HH
10	3220-3	2	Nut-HJ	23	117-8347	4	Nut-Shoulder
11	3296-39	4	Nut-Lock, NI	24	117-8339	4	Lanyard-3 Inch
12	1-613204	2	Balljoint	25	3234-24	4	Screw-HHF
13	104-1156	2	Spacer	26	114439	4	Rivet-Pop
14	323-8	2	Screw-HH				



## Deflector Assembly No. 110-0790

<i>Ref.</i>	<i>Part Number</i>	<i>Qty.</i>	<i>Description</i>
1	3231-4	4	Screw-CARR
2	110-0792-01	1	Deflector
3	110-0793-03	1	Strap-Discharge
4	110-0791	1	Deflector-Rubber
5	107-4164-01	1	Bracket-Mounting, Deflector
6	3296-39	4	Nut-Lock, NI

# Attachments and Accessories

## For 30032 Commercial Walk-Behind Mower, 15HP, T-Bar, Hydro Drive with 91cm TURBO FORCE Cutting Unit

<b>Product Name</b>	<b>Model/Part</b>
Blade-Recycler, 18 Inch.....	105-7779-03
Blade-Med Flow, 18 Inch .....	105-7794-03
Blade-Low Flow, 18 Inch.....	105-7795-03
Blade-Atomic, 18 Inch.....	105-7796-03
Blade-Hi-Flow, 18 Inch (6 Pack).....	108-1117
Blade-Atomic, 18 Inch (6 Pack).....	108-1118
Blade-Lo-Flow, 18 Inch (6 Pack).....	110-0406
Blade-Recycler, 18 Inch (6 Pack).....	110-0408
Blade-Med-Flow, 18 Inch (6 Pack).....	110-0409
36 Inch Bagger Enhancement Kit .....	110-2026
36 Inch Recycler Kit.....	110-2080
Weight-Cast.....	112-7059-01
Soft Bag (3 Bushel).....	30104
Tru Trak Sulky.....	30110

**Notes:**

**Notes:**

**Notes:**



**Count on it.**