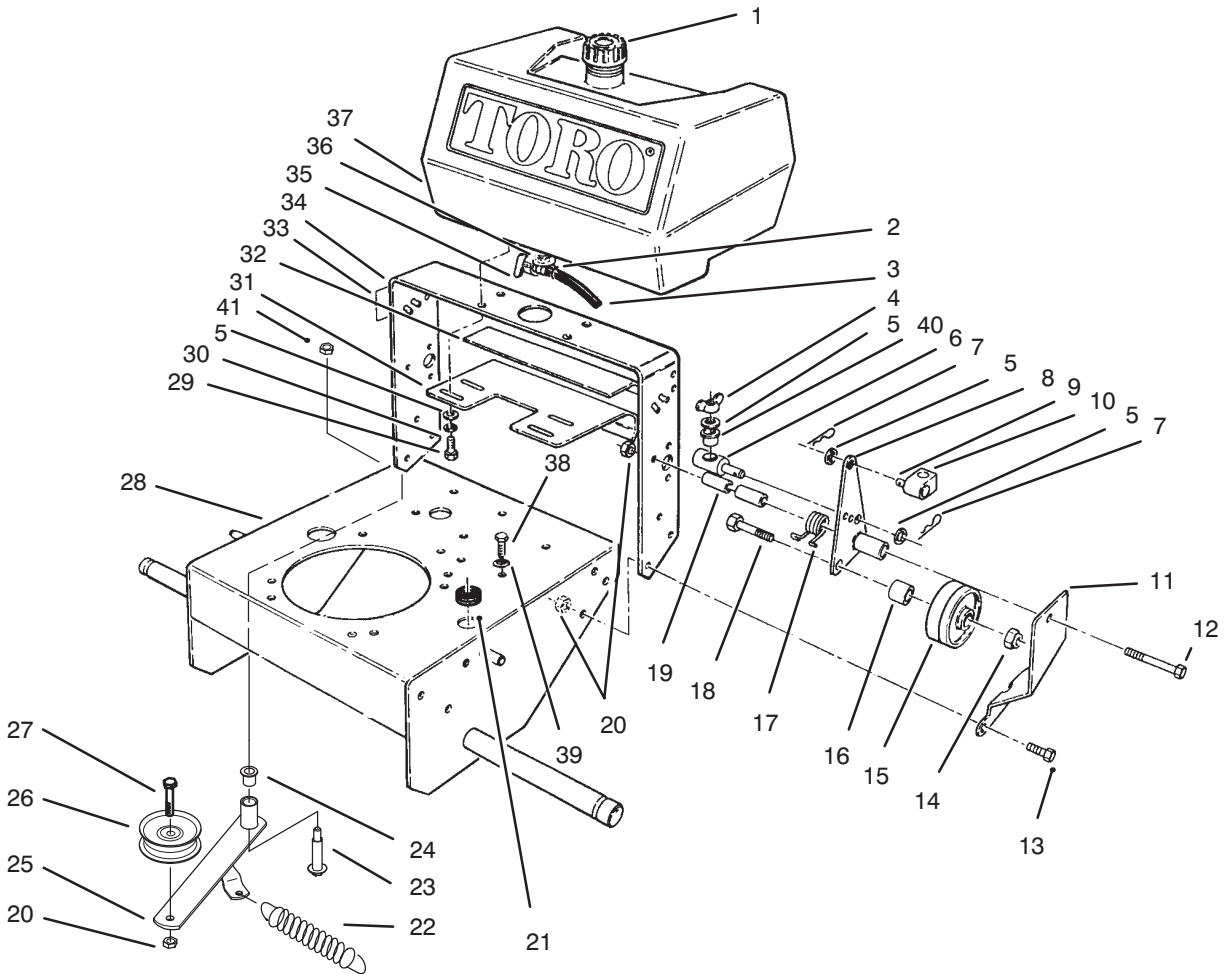




MODEL NO. 30176-690001 & UP

PARTS
CATALOG

ProLine® MIDSIZE TRACTION UNIT
14 HP Kohler Gear Drive



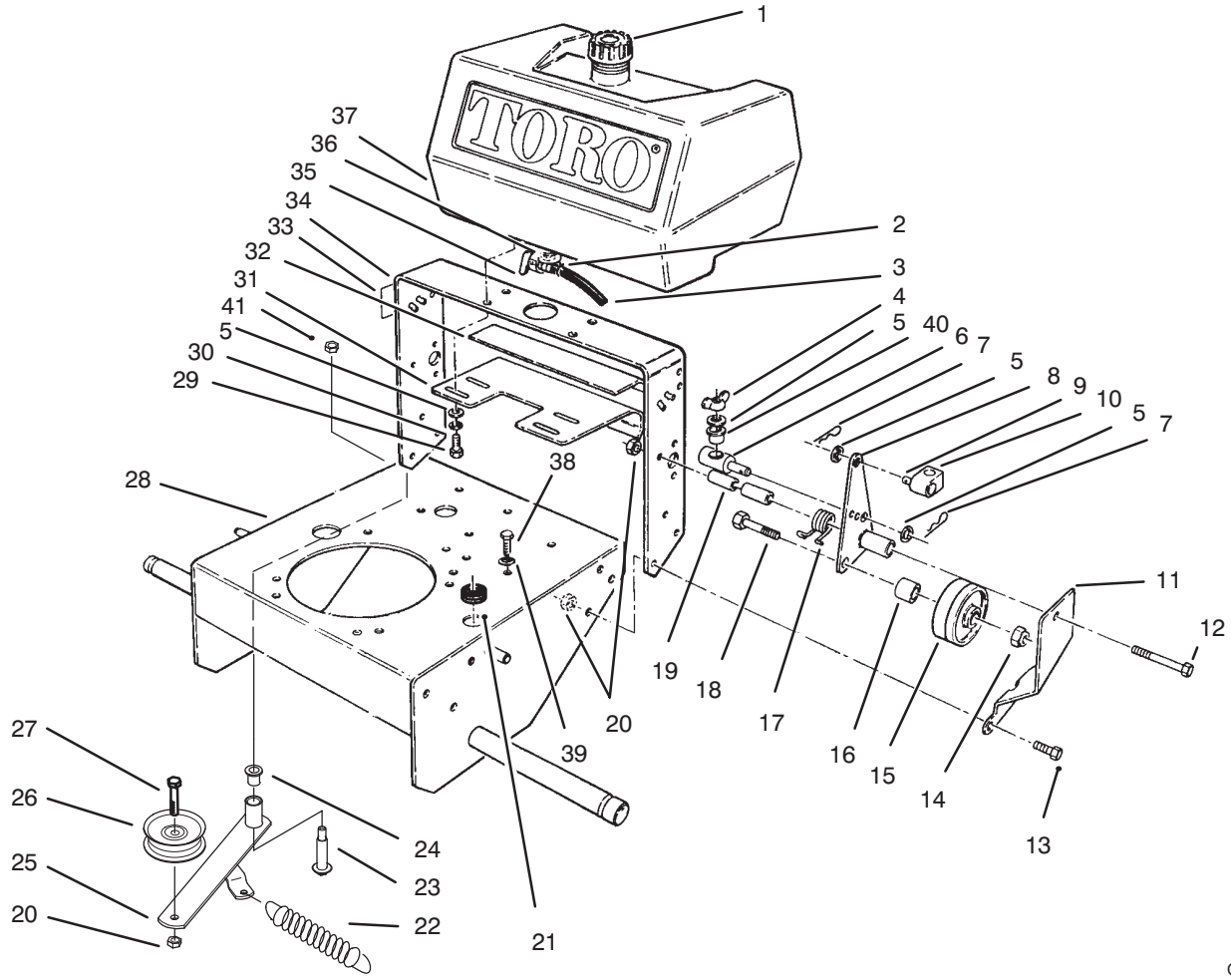
C-2096

FRAME ASSEMBLY

Ref. No.	Part No.	Description	No. Used
1	55-3570	Cap - Fuel Tank	1
2	2412-103	Clamp - Fuel line	1
3	47-2982	Hose - Fuel	1
4	32103-25	Nut - Wing	2
5	3256-23	Washer - Flat	10
6	68-9690	Fitting - Rod	2
7	3290-307	Pin - Cotter	4
8	74-0220	Idler - Bracket L.H.	1
*	74-0230	Idler - Bracket R.H.	2
9	283-6	Pin - Clevis	4
10	74-0521	Fitting - Rod	2
11	67-6380	Bracket - Support L.H.	1
*	67-6370	Bracket - Support R.H.	1
12	323-16	Screw - Hex. Hd.	2
13	323-6	Screw - Hex. Hd.	6
14	3296-23	Nut - Lock	2
15	51-4480	Idler - Wheel	2

Ref. No.	Part No.	Description	No. Used
16	51-4490	Spacer - Idler Wheel	2
17	51-4380	Spring - Torsion L.H.	1
*	51-4370	Spring - Torsion R.H.	1
18	51-4450	Screw - Leveler	2
19	74-0040	Spacer - Pivot Idler	4
20	3296-39	Nut - Lock	9
21	237-124	Grommet	1
22	68-2190	Spring - Extension	1
23	27-6230	Bolt - Wheel	1
24	256-155	Bushing	2
25	16-7509	Lever - Idler (Incl. Ref. #24)	1
26	62-4540	Pulley - Idler	1
27	323-8	Screw - Hex. Hd.	1
28	93-1156	Frame	1
29	322-4	Screw - Hex. Hd.	4
30	3253-4	Washer - Lock	4

*Not Illustrated

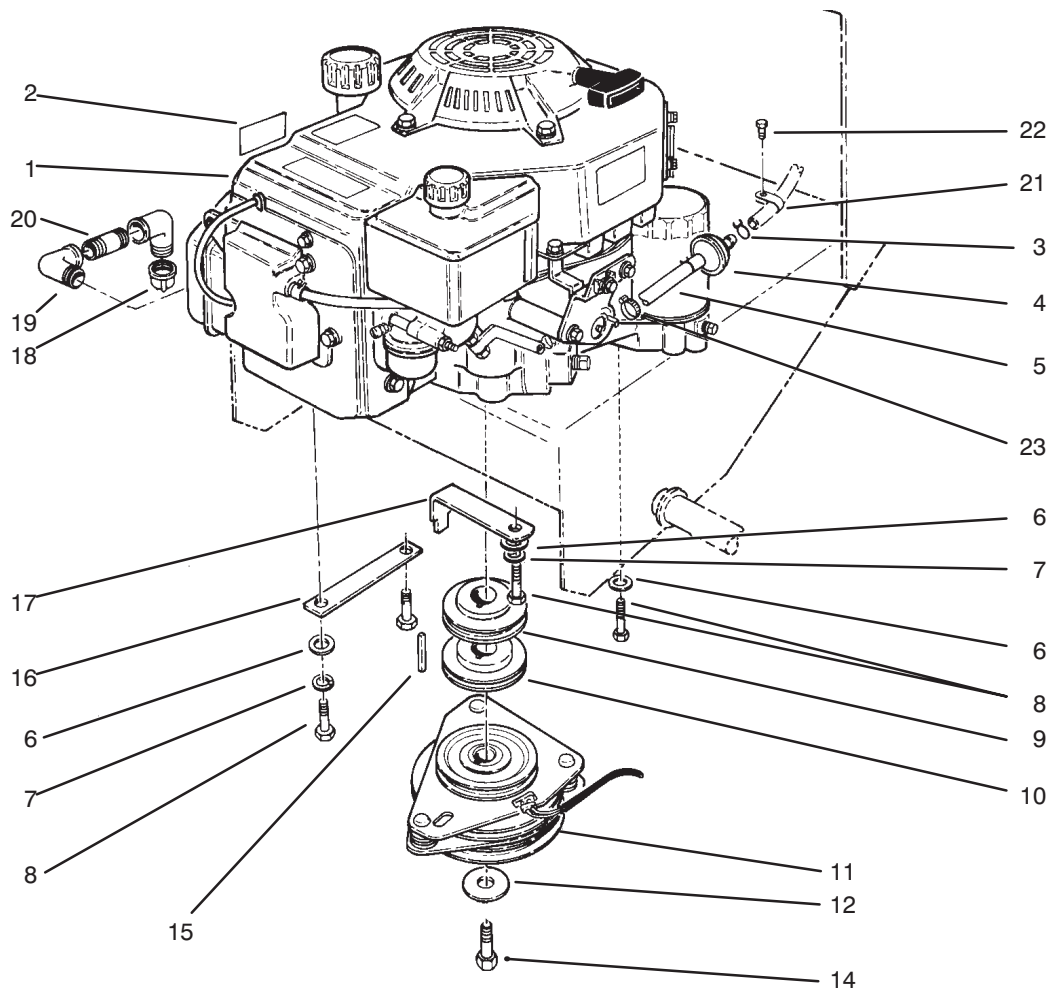


C-2096

FRAME ASSEMBLY (Continued)

Ref. No.	Part No.	Description	No. Used
31	66-7400	Plate - Control	1
32	82-7750	Decal - Ground Speed	1
33	74-0490	Decal - Fuel Shut Off	1
34	74-0360	Frame - Rear	1
35	74-0510	Valve - Fuel	1
36	237-7	"O" Ring	1

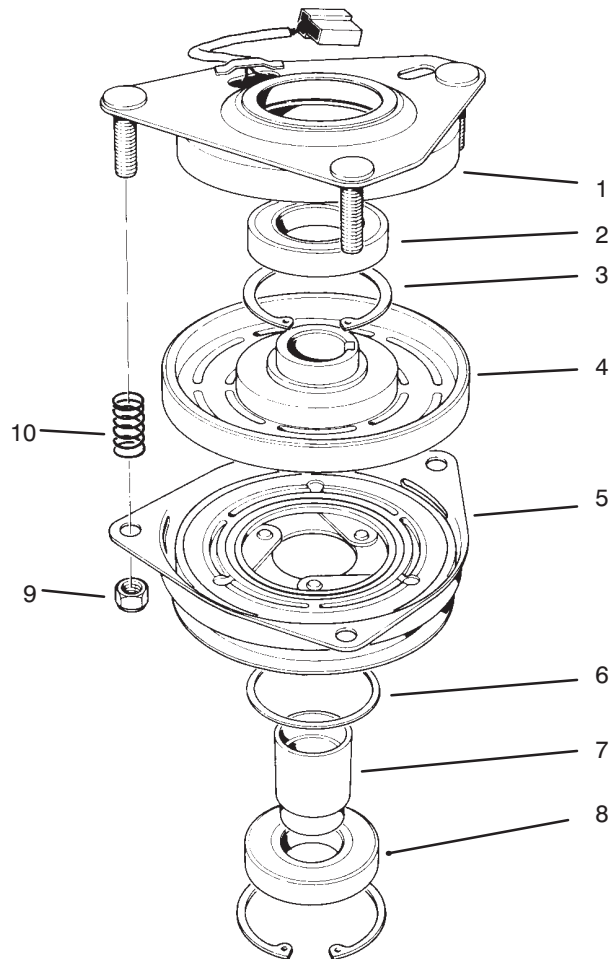
Ref. No.	Part No.	Description	No. Used
37	82-8440	Tank - Fuel	1
38	12-3270	Screw	1
39	3255-7	Washer - Ext. Tooth	1
40	52-2890	Bushing	2
41	3296-6	Nut - Lock	1



C-2097

ENGINE ASSEMBLY

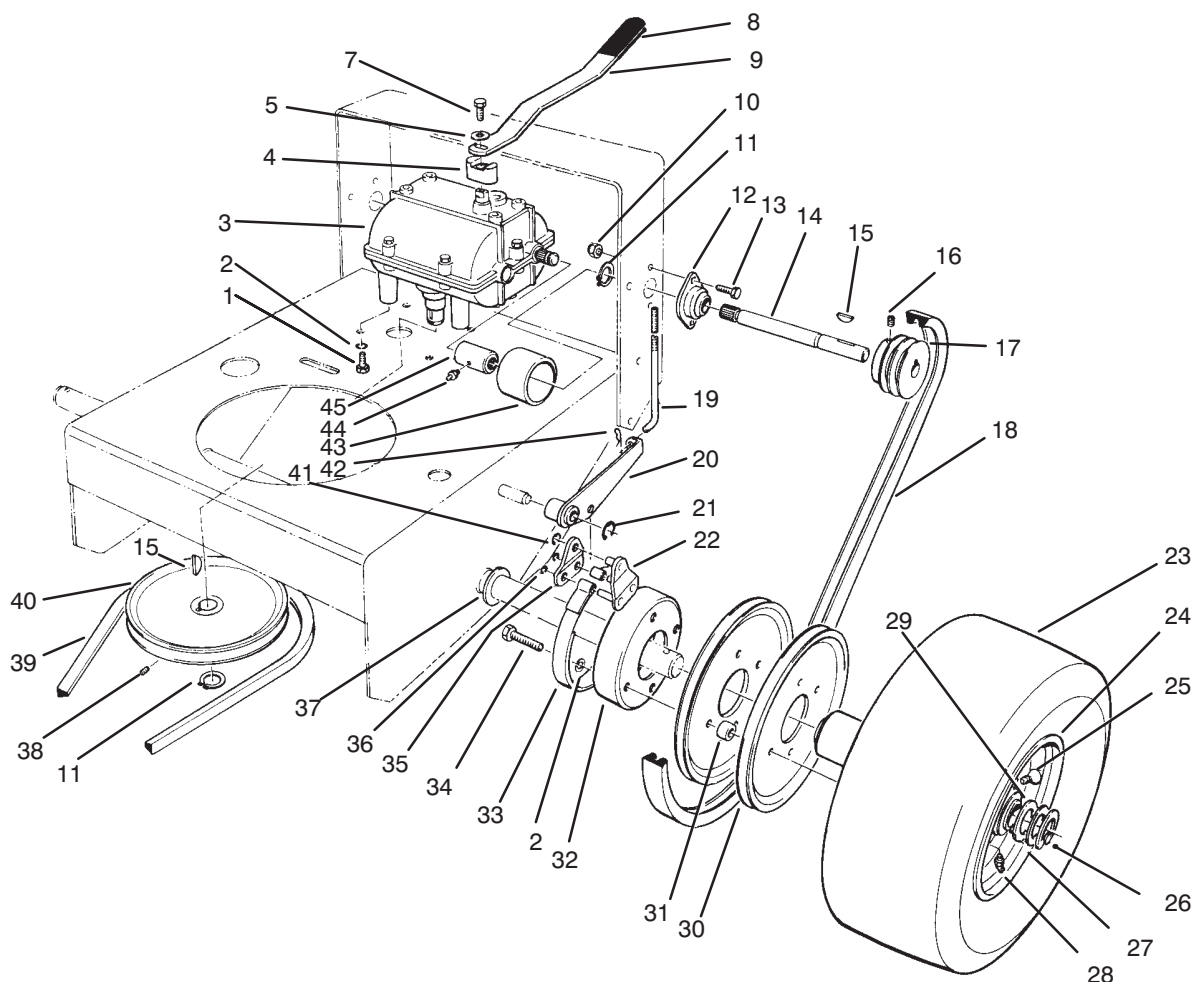
Ref. No.	Part No.	Description	No. Used	Ref. No.	Part No.	Description	No. Used
1		Engine	1	12	112843	Washer – Clutch	1
2	63-8440	Decal – Hot	1	14	57-6360	Screw – Hex. Hd.	1
3	2412-98	Clamp – Fuel Filter	3	15	608006	Key – Crankshaft	1
4	56-6360	Filter – Fuel	1	16	74-0930	Guard – Pulley	1
5	47-2964	Line – Fuel	1	17	51-4540	Retainer – Clutch	1
6	3256-23	Washer – Flat	3	18	288-4	Cap – Pipe	1
7	3253-4	Washer – Lock	3	19	74-0950	Elbow	2
8	57-6380	Screw – Hex. Hd.	4	20	289-51	Nipple	1
9	74-0060	Sheave – Upper Half	1	21	2412-87	Clamp – Hose	1
10	74-0050	Sheave – Lower Half	1	22	32144-19	Screw	1
11	54-3200	Clutch Assembly	1	23	2412-108	Clamp	1



T-0080

CLUTCH ASSEMBLY NO. 54-3200

Ref. No.	Part No.	Description	No. Used	Ref. No.	Part No.	Description	No. Used
1	54-0230	Field Ass'y (Incl. Ref. #2 & 3)	1	5	55-7410	Armature & Pulley Assembly (Incl. Ref. # 3, 6, 7, & 8)	1
2	251-292	Bearing - Field	1	6	44-8330	Spacer - Pulley Bearing	1
3	44-8310	Ring - Retaining	2	7	44-8340	Collar - Bearing	1
4	44-8360	Field Coil, Rotor & Bearing Assembly (Incl. Ref. # 1)	1	8	251-291	Bearing - Pulley	1
				9	3296-5	Nut - Lock	3
				10	44-8320	Spring	3



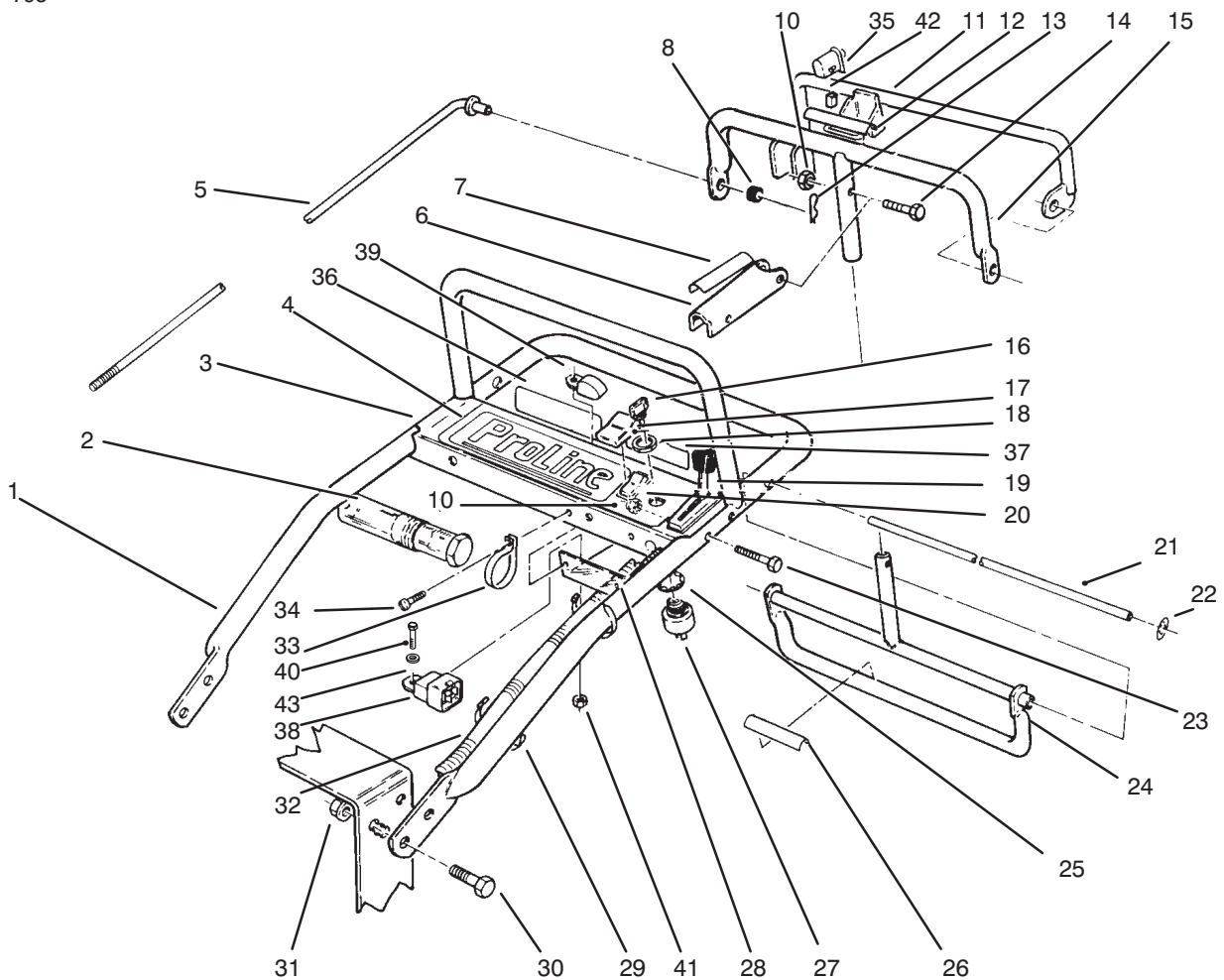
C-0502

AXLE ASSEMBLY

Ref. No.	Part No.	Description	No. Used
1	322-2	Screw - Hex. Hd.	4
2	3253-4	Washer - Lock	12
3	74-0610	Transmission	1
4	72-2190	Mount - Shift Lever	1
5	7-5461	Spacer	1
7	329-10	Screw - Hex. Hd.	1
8	47-1970	Grip - Engagement	1
9	74-0320	Lever - Shift	1
10	3296-42	Nut - Lock	4
11	32120-64	Ring - Retaining	3
12	51-4270	Bearing - Shaft Extension	2
13	321-4	Screw - Hex. Hd.	4
14	51-4240	Shaft - Extension R.H.	1
*	51-4250	Shaft - Extension L.H.	1
15	3257-5	Key - Woodruff	3
16	3245-3	Screw - Set Socket Hd.	2
17	74-0480	Pulley - Drive	2
18	51-4290	Belt - Drive	2
19	51-4580	Rod - Brake	2
20	51-4610	Brake Arm L.H.	1
*	51-4600	Brake Arm R.H.	1
21	32151-40	Ring - Retaining	2
22	51-4650	Link - Brake	2

Ref. No.	Part No.	Description	No. Used
23	231-117	Tire	2
24	242-80	Rim	2
25	232-27	Valve Stem	2
26	32151-91	Ring - Retaining	2
27	92-1746	Bearing	4
28	302-11	Fitting - Grease	2
29	10-8110	Washer - Flat	A/R
30	51-4160	Pulley - Wheel	4
31	51-4170	Spacer - Pulley	8
32	51-4180	Drum - Brake	2
33	51-4700	Brake Band Assembly	2
34	322-7	Screw - Hex. Hd.	8
35	51-4660	Plate - Link Brake	2
36	32151-72	Ring - Retaining	4
37	51-4230	Washer - Wheel	2
38	3245-1	Screw - Set	1
39	26-9671	Belt - Traction	1
40	51-4190	Pulley - Driven	1
41	32151-56	Ring - Retaining	2
42	3290-307	Pin - Cotter	2
43	51-4220	Guard - Coupler	2
44	302-5	Fitting - Grease	2
45	51-4260	Coupler	2

*Not Illustrated

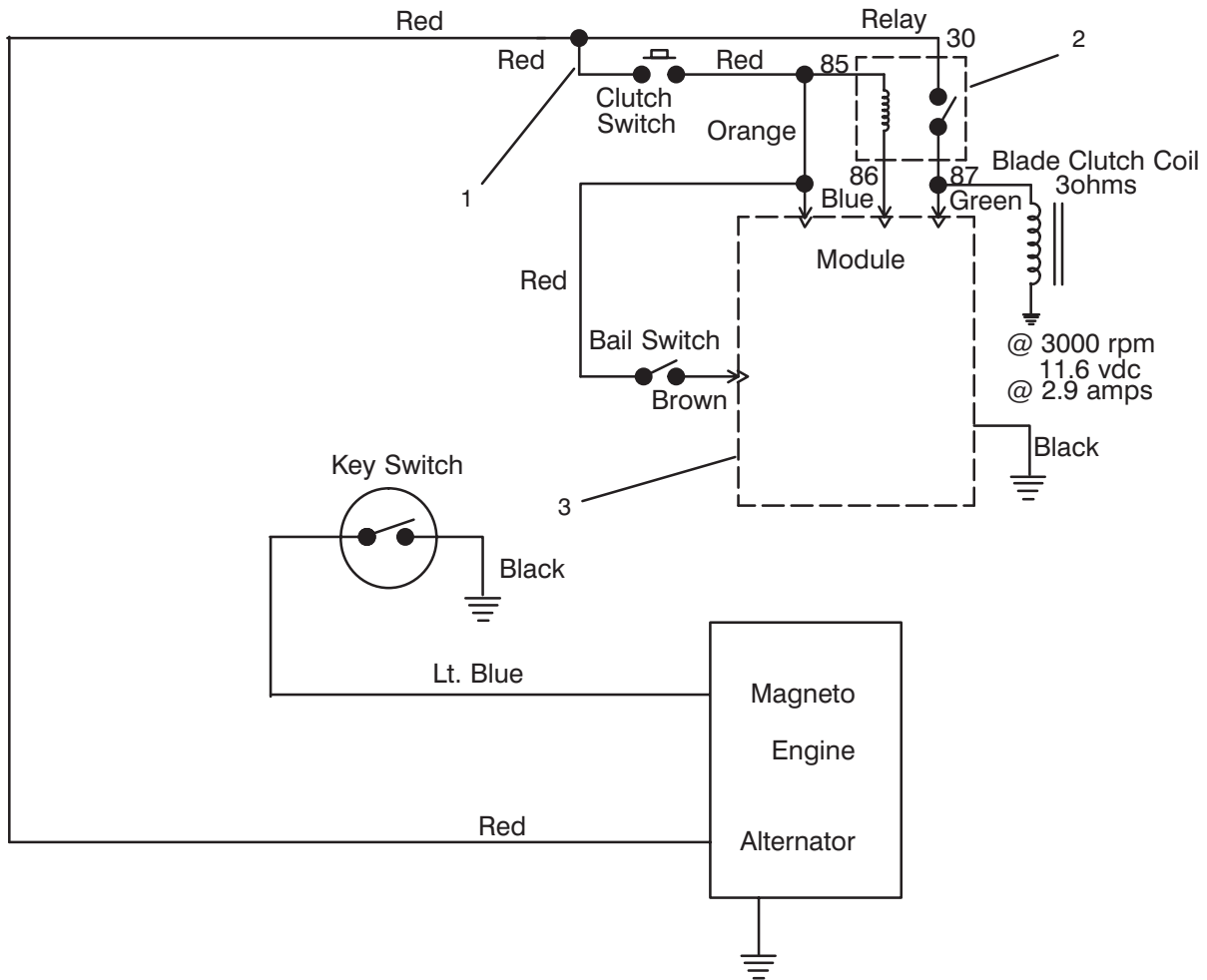


C-0503

HANDLE ASSEMBLY

Ref. No.	Part No.	Description	No. Used
1	67-6440	Handle - Upper	1
2	74-0720	Tube - Manual	1
3	82-2180	Panel - Control	1
4	82-7730	Decal - Proline	1
5	82-7631	Rod - Control	2
6	51-4850	Lever - Brake, Parking	1
7	52-2010	Decal - Parking Brake	1
8	237-141	Grommet - Rubber	2
10	3296-2	Nut - Lock	5
11	82-7680	Bail Assembly	1
12	82-2290	Decal - Control Bar	1
13	3290-307	Pin - Cotter	2
14	32105-1	Screw - Hex. Hd. Machine	1
15	82-7690	Bar - Control	1
16	63-8360	Key	2
17	82-3820	Boot	1
18	218-461	Nut	1
19	74-0630	Control - Throttle	1
20	82-2300	Switch - Clutch	1
21	74-0470	Rod - Pivot	1
22	32151-80	Ring - Push On	2
23	32105-14	Screw - Hex. Hd. Machine	4

Ref. No.	Part No.	Description	No. Used
24	74-0380	Control - Pivot	1
25	3254-5	Washer - Lock	1
26	82-2280	Decal - Reverse Handle	1
27	29-5560	Switch - Off/On (Incl. Ref. #16, 18, & 25)	1
28	57-5811	Panel - Bottom	1
29	3290-378	Cable Tie	2
30	3234-11	Screw - Hex. Hd.	4
31	32128-21	Nut - Hex. Flange	4
32		Wire Harness (Ref.)	1
33	2412-120	"R" Clamp	2
34	32144-19	Screw - Self Tapping	4
35	82-2190	Switch - Bail	1
36	71-1280	Decal - Danger	1
37	65-3090	Decal - Instruction	1
38	63-7590	Relay	1
39	86-7910	Module	1
40	321-1	Screw	2
41	3296-42	Nut - Lock	2
42	218-595	Connector - Body	1
43	3255-7	Washer	1



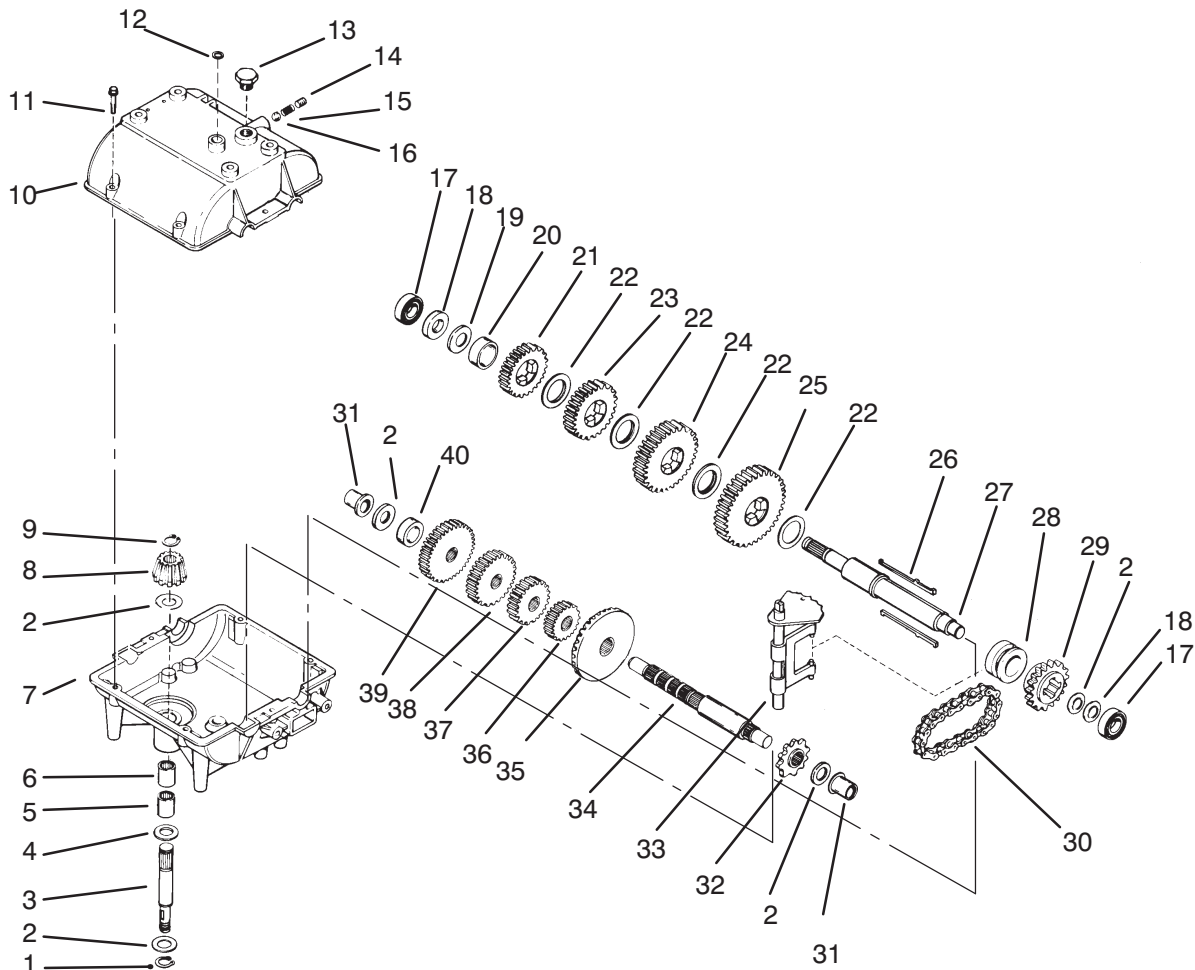
C-0748

ELECTRIC SCHEMATIC

Ref. No.	Part No.	Description	No. Used
1	82-2260	Wire Harness	1
2	63-7590	Relay	1
3	86-7910	Module - Interlock	1

Ref. No.	Part No.	Description	No. Used
*	218-595	Connector - Bail Switch	1

*Not Illustrated

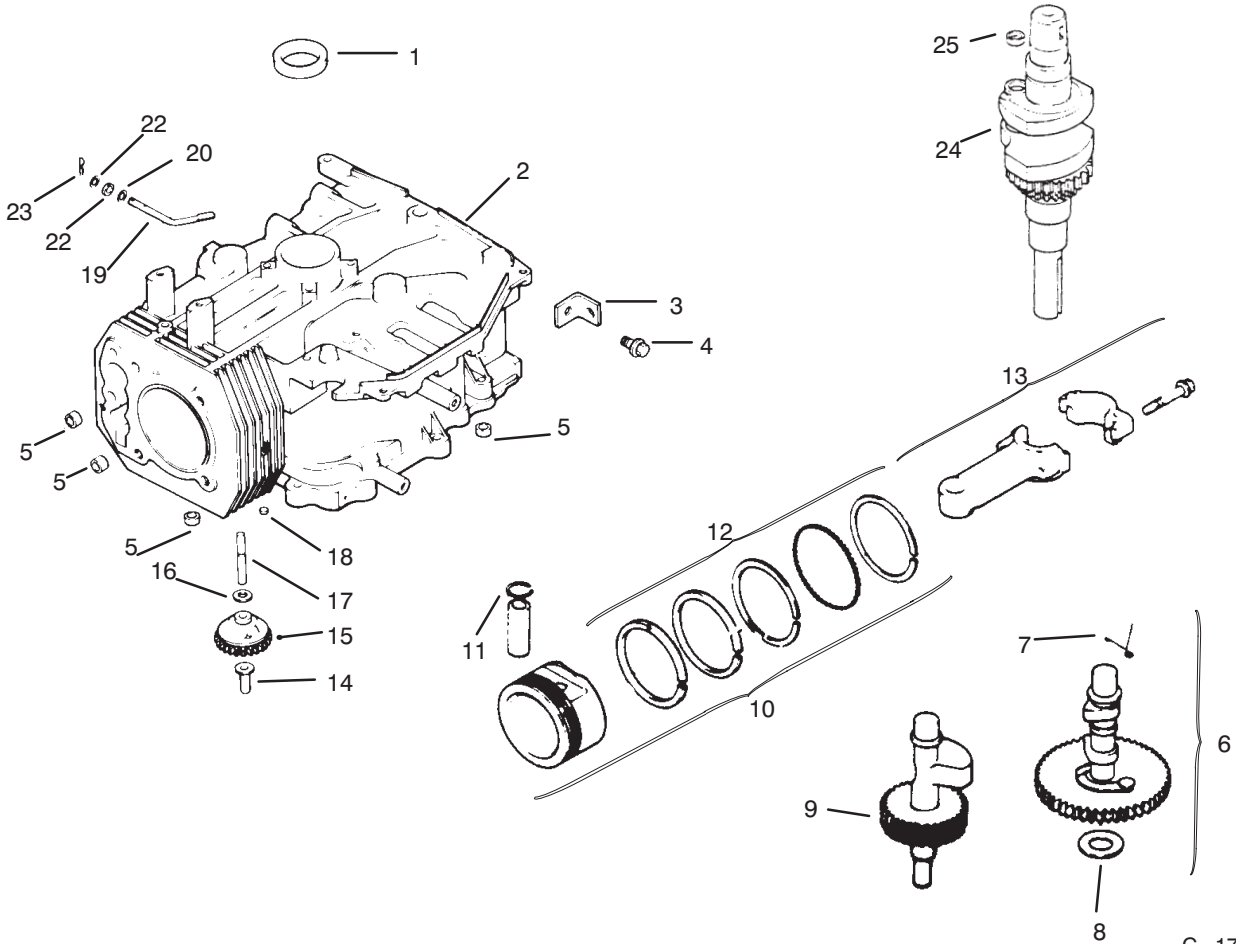


C-1776

PEERLESS TRANSMISSION MODEL NO. 700-039

Ref. No.	Part No.	Description	No. Used
1	792035	Ring – Retaining	1
2	780072	Washer – Thrust	5
3	776135	Shaft – Input	1
4	792001	”O”Ring	2
5	780142	Bearing – Needle	1
6	780086	Bearing – Needle	1
7	770090A	Case – Transmission	1
8	778153	Bevel Pinion – Input	1
9	788040	Ring – Retaining	1
10	772099A	Cover – Transmission	1
11	792073	Screw – Self Tapping	6
12	788069	Seal – Square Cut	1
13	792074	Plug – Threaded	1
14	792078	Screw – Set	1
15	792079	Spring	1
16	792077	Ball – Steel	1
17	780092	Bearing – Ball	2
18	780065	Washer – Thrust	2
19	780139	Washer – Thrust	1
20	786072	Spacer	1
21	778123A	Gear – Spur (25 Teeth)	1

Ref. No.	Part No.	Description	No. Used
22	780108	Washer – Thrust	4
23	778250	Gear – Spur (27 Teeth)	1
24	778124A	Gear – Spur (30 Teeth)	1
25	778125	Gear – Spur (35 Teeth)	1
26	792089A	Key	4
27	776289A	Shaft – Output & Brake	1
28	784266	Collar – Shift	1
29	786083	Sprocket (18 Teeth)	1
30	786081	Chain – Roller (No. 41 Chain 24 Links)	1
31	780105A	Bushing – Flanged	2
32	786082	Sprocket (9 Teeth)	1
33	784267	Rod & Fork Ass’y – Shift	1
34	776134	Shaft – Counter	1
35	778154	Gear – Bevel (42Teeth)	1
36	778136	Gear – Spur (15 Teeth)	1
37	778126A	Gear – Spur (20 Teeth)	1
38	778249	Gear – Spur (23 Teeth)	1
39	778127A	Gear – Spur (25 Teeth)	1
40	786071	Spacer	1



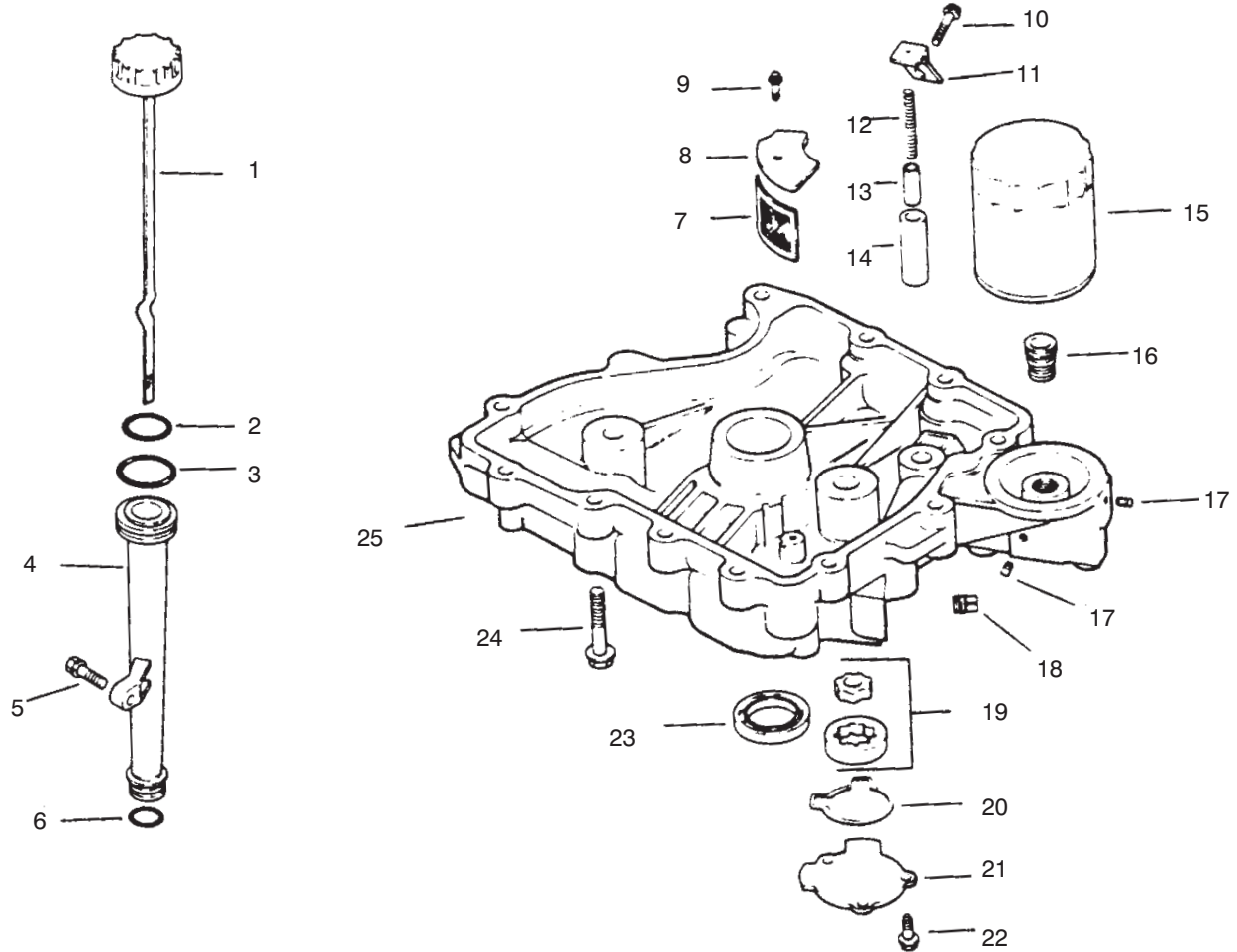
C-1792

CRANKCASE

Ref. No.	Part No.	Description	No. Used
1	12 032 03	Seal - Crankshaft	1
2	12 522 21	Short Block	1
3	12 445 02	Strap - Lifting	1
4	M-0839025	Screw - Lifting Strap	1
5	12 380 03	Dowel - Locating	4
6	12 755 49	Camshaft Assembly	1
7	12 089 18	Spring - Actuating	1
8	12 422 08	Shim - Camshaft	1
*	12 422 09	Shim - Camshaft	A/R
*	12 422 10	Shim - Camshaft	A/R
*	12 422 11	Shim - Camshaft	A/R
*	12 422 12	Shim - Camshaft	A/R
*	12 422 13	Shim - Camshaft	A/R
*	12 422 07	Shim - Camshaft	A/R
9	12 144 19	Shaft - Balance	1
10	12 847 01	Piston W/Ring Set (Std.)	1
*	12 847 02	Piston W/Ring Set (.25)	1
*	12 847 03	Piston W/Ring Set (.50)	1
11	12 018 02	Retainer - Piston Pin	2

Ref. No.	Part No.	Description	No. Used
12	12 108 01	Ring Set (Std.)	1
*	12 108 02	Ring Set (.25)	1
*	12 108 03	Ring Set (.50)	1
13	12 067 05	Connecting Rod (Std.)	1
*	12 067 06	Connecting Rod (.25)	1
14	12 380 01	Pin - Governor Regulating	1
15	12 043 05	Gear - Governor Ass'y	1
16	M-0631005	Washer - Governor Gear	1
17	12 144 02	Shaft - Governor Gear	1
18	52 139 09	Plug - Cap	1
19	12 144 01	Shaft - Governor Cross	1
20	X-25-102	Washer	1
21	12 032 01	Seal - Cross Shaft	1
22	SM-0631015	Washer - Governor Shaft	1
23	12 380 04	Pin - Governor Hitch	1
		Crankshaft Group 1	
24	12 014 29	Crankshaft Assembly	1
25	12 139 01	Plug - Cup	1

*Not Illustrated



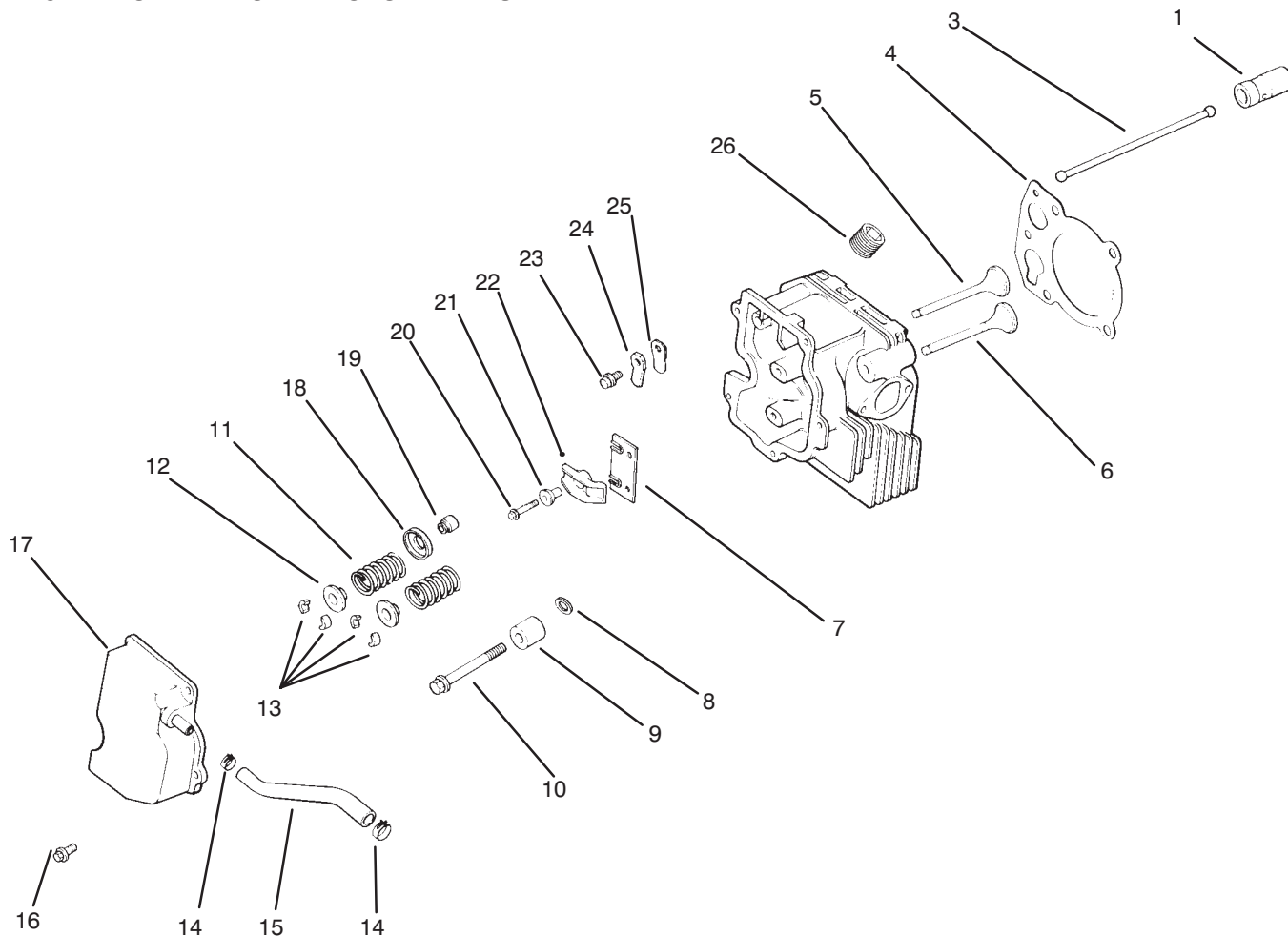
C-1794

OIL PAN / LUBRICATION

Ref. No.	Part No.	Description	No. Used
1	12 038 01	Dipstick Assembly	1
2	12 153 03	"O"Ring - Dipstick	1
3	12 153 02	"O"Ring - Upper Tube	1
4	12 123 04	Tube - Oil Fill	1
5	SM-0545020	Screw - Oil Fill Tube	1
6	12 153 01	"O"Ring - Lower Tube	2
7	25 162 07	Screen - Oil Pick Up	1
8	12 096 03	Cover - Oil Screen	1
9	SM-0545016	Screw	1
10	M-1039025	Screw	1
11	12 126 02	Bracket - Oil Pump Relief Valve	1
12	12 089 03	Spring - Oil Pump Relief Valve	1
13	12 462 01	Piston - Oil Pump	1

Ref. No.	Part No.	Description	No. Used
14	12 208 01	Relief Valve Body - Oil Pump Relief Valve	1
15	52 050 02	Filter - Oil	1
16	12 136 01	Adapter - Oil Filter	1
17	X-75-1	Plug - 1/8 N.P.T.F.	2
18	X-75-10	Plug - 3/8 N.P.T.F.	2
19	12 393 01	Pump - Oil Assembly	1
20	12 032 04	"O"Ring - Pump Cover	1
21	12 096 02	Cover - Oil Pump	1
22	SM-0545016	Screw	3
23	12 032 03	Seal - Oil (P.T.O.End)	1
24	SM-0839045	Screw - Oil Pan	11
25	12 199 21	Pan - Oil	1
*	25 755 13	Kit - Oil Fill Cap	1

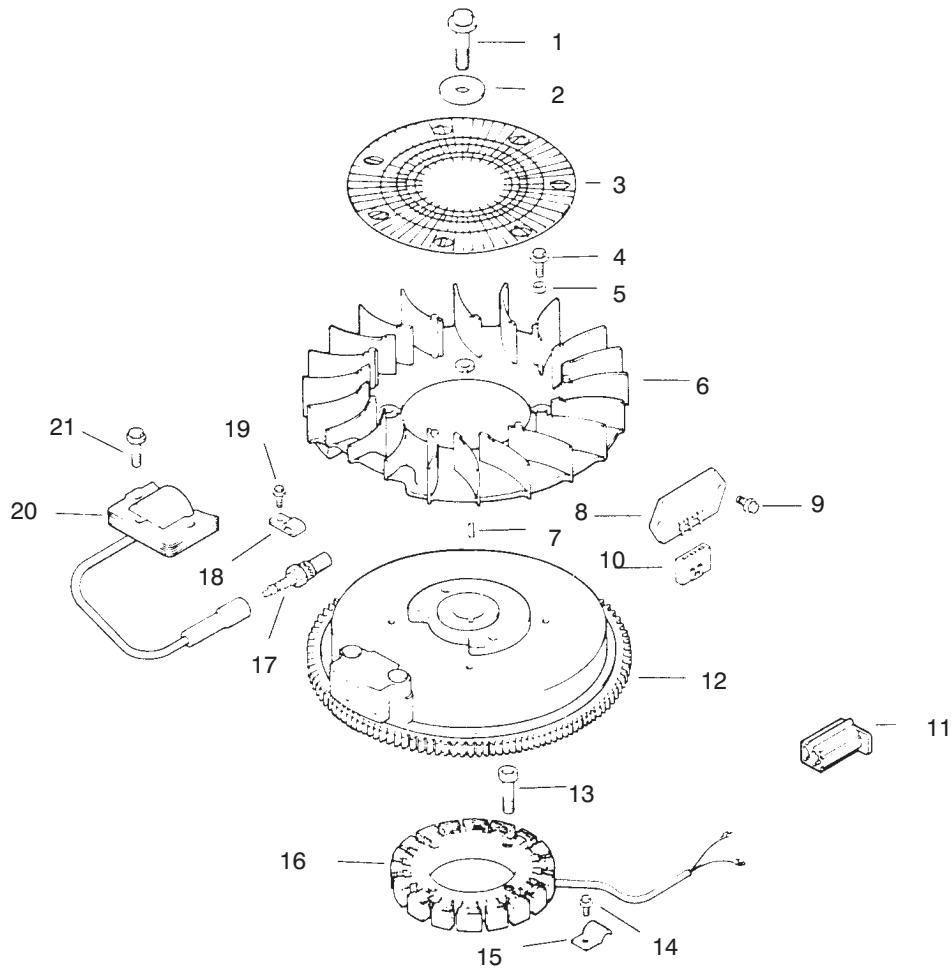
*Not Illustrated



CYLINDER HEAD, VALVE & BREATHER

Ref. No.	Part No.	Description	No. Used
1	12 351 01	Lifter – Valve	2
3	12 411 01	Rod – Push	2
4	12 041 08	Gasket – Cylinder Head	1
5	12 017 01	Valve – Intake (Std.)	1
*	12 017 02	Valve – Intake (.25)	1
6	12 016 01	Valve – Exhaust (Std)	1
*	12 016 02	Valve – Exhaust (.25)	1
7	12 146 13	Plate – Guide	1
8	12 468 05	Washer – Flat	1
9	12 112 13	Spacer – Head Bolt	1
10	12 086 15	Screw – Cylinder Head	5
11	12 089 01	Spring – Valve	1
12	12 173 01	Cap – Valve Spring	2
13	12 755 03	Kit – Retainer	2
14	X-426-9	Clamp – Hose	2

Ref. No.	Part No.	Description	No. Used
15	12 326 03	Hose – Breather	1
16	M-0645020	Screw – Valve Cover	3
17	12 096 07	Cover – Valve W/Nipple	1
18	235011	Retainer – Spring	2
19	24 032 05	Seal – Valve Stem	1
20	M-0640034	Screw – Rocker Bridge	2
21	24 194 01	Pivot – Rocker Arm	2
22	24 186 03	Arm – Rocker	2
23	M-0545010	Screw – Breather Reed	1
24	12 018 01	Retainer – Breather Reed	1
25	12 402 02	Reed – Breather	1
26	X-75-23	Plug	1
*	12 755 58	Kit – Cylinder Head (Incl. Ref. #3-13, 18-22 & 26)	1

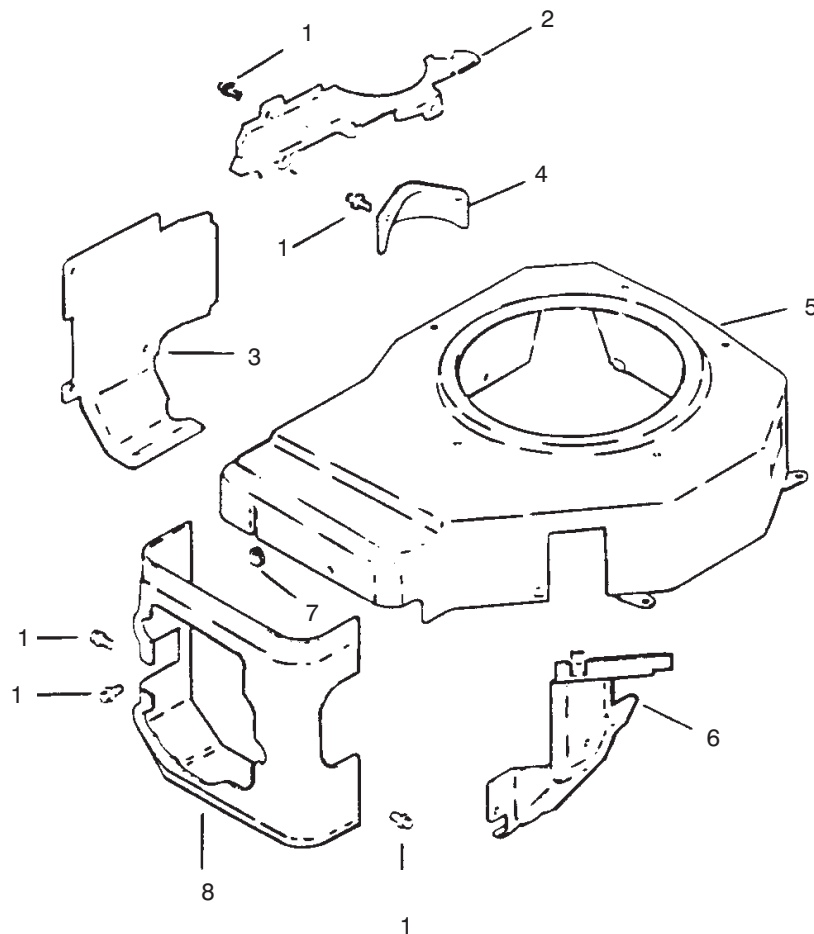


C-1796

IGNITION / ELECTRICAL

Ref. No.	Part No.	Description	No. Used	Ref. No.	Part No.	Description	No. Used
1	12 086 14	Screw - Flywheel	1	14	M-0545010	Screw - Stator Harness	1
2	12 486 03	Washer - Flywheel	1	15	12 154 02	Clip - Stator Harness	1
3	12 162 03	Screen - Grass	1	16	24 085 01	Stator - 15 Amp.	1
4	M-0639016	Screw - Fan	4	17	12 132 02	Spark Plug	1
5	12 112 01	Spacer - Fan	4	18	X-728-1	Clip - Kill Lead	1
6	12 157 01	Fan	1	19	M-0545010	Screw - Lead Clip	1
7	X-42-15	Key	1	20	12 584 02	Module - Ignition	1
8	12 403 01	Rectifier - Unregulated	1	21	SM-0545020	Screw - Ignition Module	2
9	M-0639016	Screw - Regulator	2		25 518 05	Lead - Black, Rectifier to Connector(5"-14 Gauge)	1
10	236602	Connector - Regulator	1	*	12 518 01	Lead - White, Ground to Kill (9.5"-18 Gauge)	1
11	41 155 03	Connector	1				
12	12 025 16	Flywheel Assembly	1				
13	M-0548025	Screw - Stator	4				

*Not Illustrated



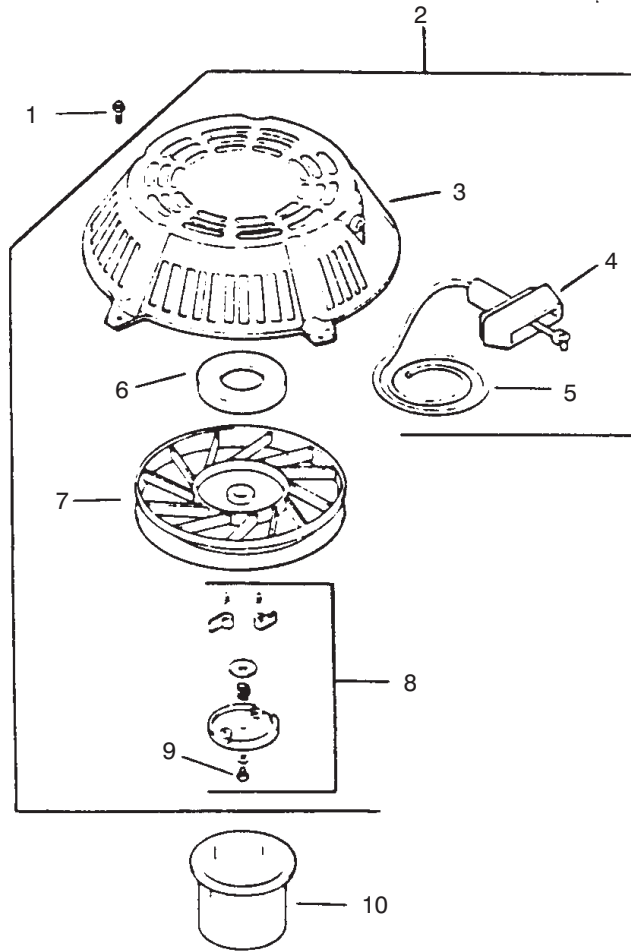
C-1797

BLOWER HOUSING & BAFFLES

Ref. No.	Part No.	Description	No. Used
1	M-0545010	Screw	15
2	12 146 07	Plate - Blower Housing	1
3	12 063 01	Baffle - Cylinder Barrel	1
4	12 096 23	Cover - Starter	1
5	12 027 11	Housing - Blower	1

Ref. No.	Part No.	Description	No. Used
6	12 063 05	Baffle - Carburetor	1
7	12 313 03	Grommet - Blower Hsg	1
8	12 063 03	Baffle - Cylinder Head	1
*	12 133 31	Decal - H.P.	1

*Not Illustrated

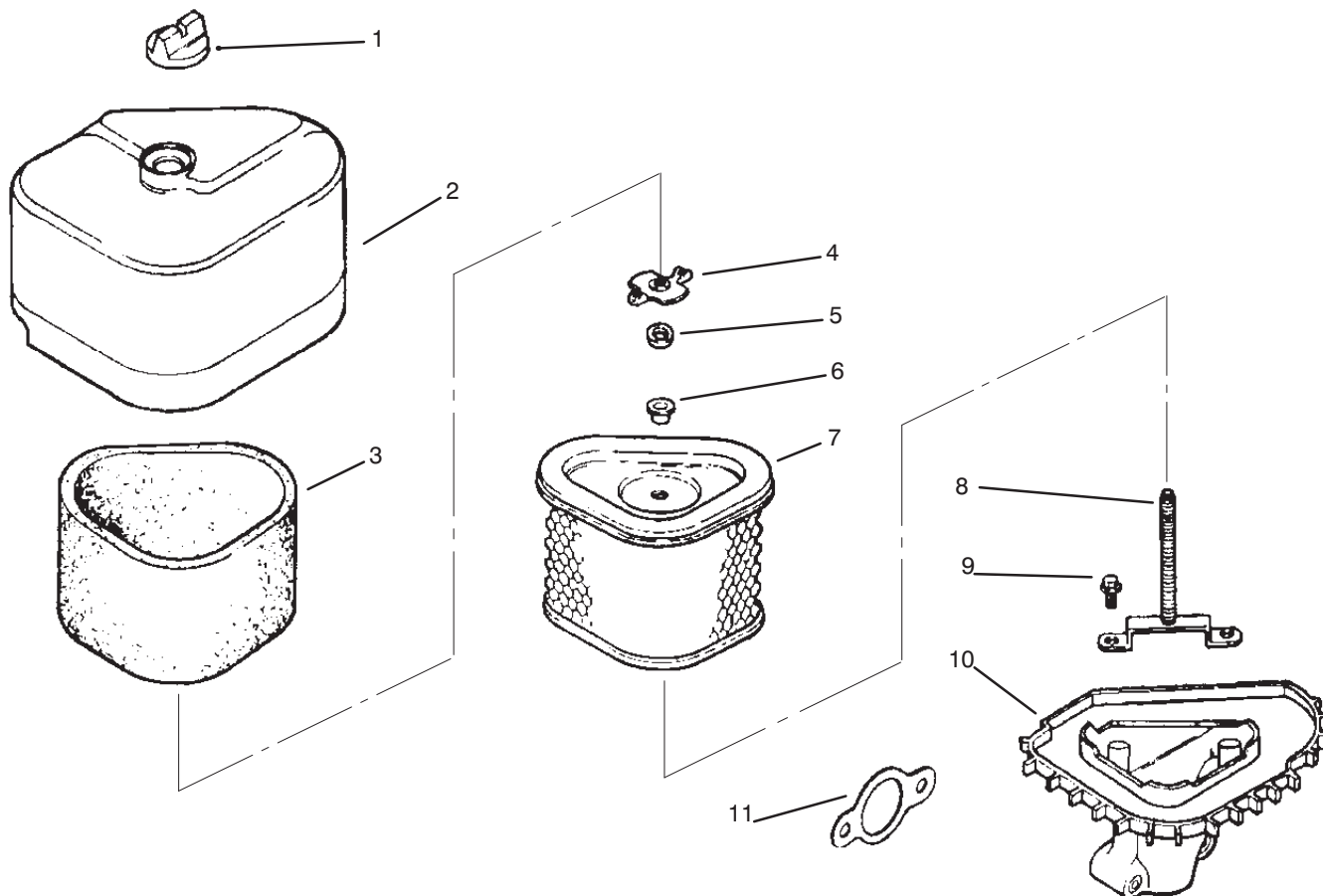


C-1798

STARTER SYSTEM

Ref. No.	Part No.	Description	No. Used
1	M-0545010	Screw	5
2	12 165 01	Starter (Incl.Ref.#3-9)	1
3	12 081 01	Housing - Starter	1
4	234452	Handle - Recoil	1
5	12 160 01	Rope - Starter	1
6	12 089 06	Spring & Keeper	1

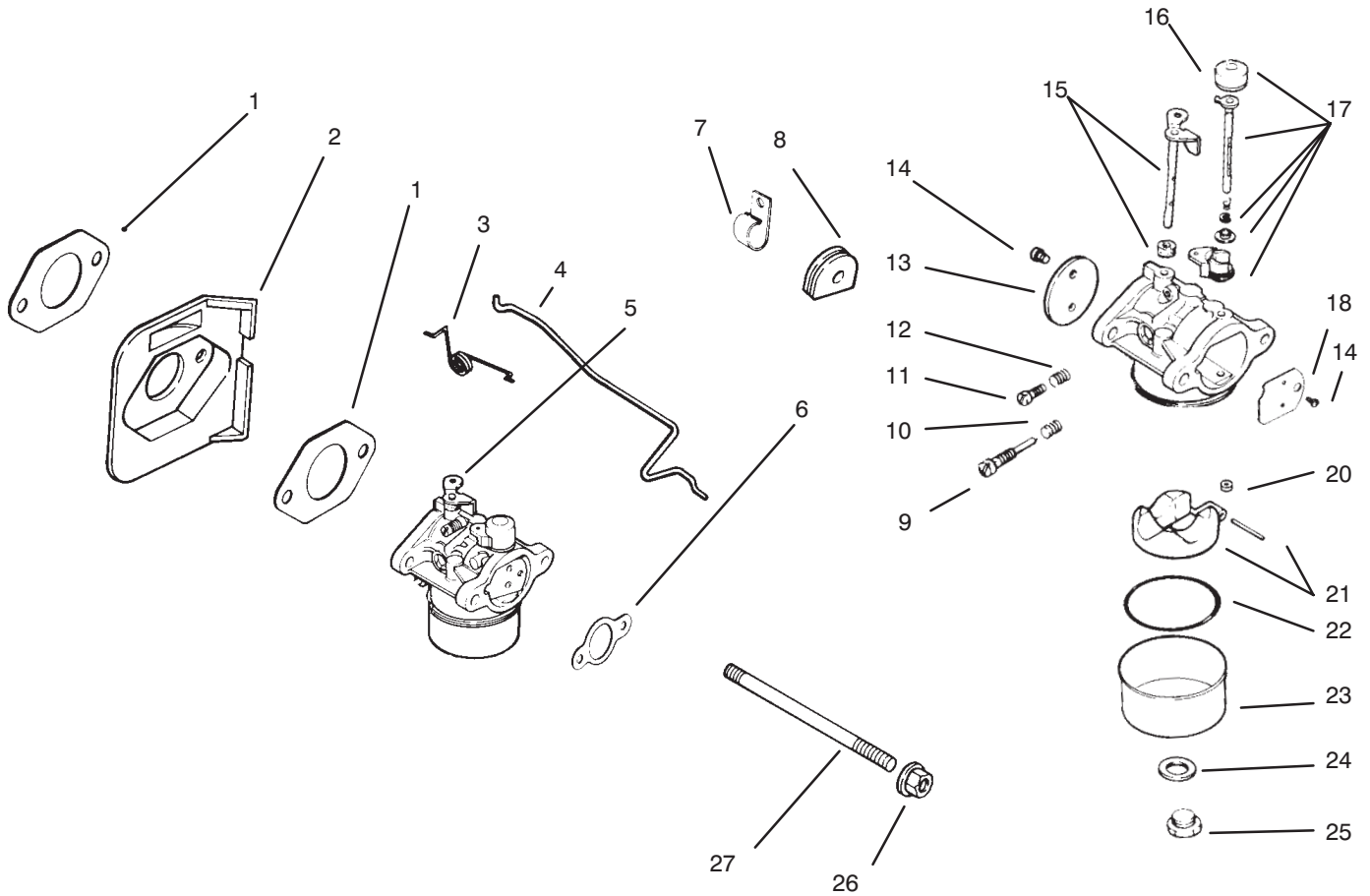
Ref. No.	Part No.	Description	No. Used
7	12 093 01	Pulley	1
8	12 757 06	Kit - Dog Replacement (Incl Ref. #9)	1
9	41 086 09	Screw - Pozidrive	1
10	15 109 01	Cup - Driver	1
*	12 113 07	Decal - Starting	1



AIR CLEANER

Ref. No.	Part No.	Description	No. Used
1	25 341 02	Knob – Air Cleaner Cover	1
2	12 096 16	Cover – Air Cleaner	1
3	12 083 12	Precleaner – Element	1
4	12 100 01	Nut – Wing	1
5	X-25-63	Washer – Flat	1
6	12 313 04	Grommet	1
7	12 083 10	Element – Air Cleaner	1

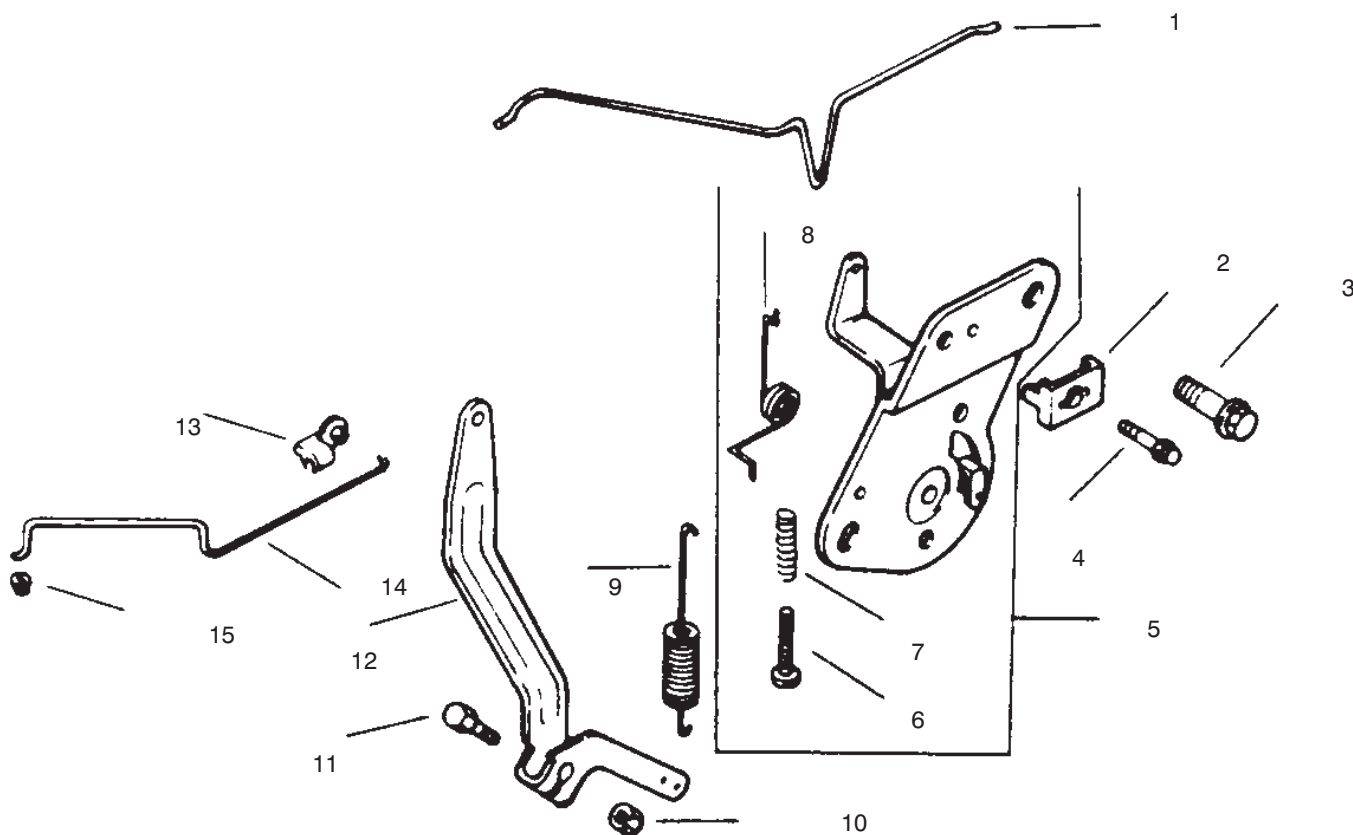
Ref. No.	Part No.	Description	No. Used
8	12 072 04	Stud – Mounting Plate	1
9	12 086 01	Screw – Mounting Plate	1
10	12 094 07	Base – Air Cleaner	1
11	12 041 02	Gasket – Air Cleaner	1
*	12 734 02	Kit – Air Cleaner (Incl. Ref. #1-11)	1
*	12 113 04	Decal – Air Cleaner	1



CARBURETOR

Ref. No.	Part No.	Description	No. Used
1	12 041 01	Gasket – Carburetor	1
2	12 265 01	Deflector – Heat	1
3	12 089 23	Spring – Choke Return	1
4	12 079 07	Linkage – Choke	1
5	12 053 47	Carburetor Assembly (Incl Ref. #9-25)	1
6	12 041 02	Gasket – Air Cleaner	1
7	47 154 01	Clamp – Fuel Line	1
8	12 313 01	Grommet	1
9	12 368 05	Needle – Idle	1
10	12 089 09	Spring – Idle	1
11	12 086 04	Screw – Idle	1
12	12 089 09	Spring – Idle	1
13	12 146 03	Plate – Throttle	1
14	25 086 27	Screw – Throttle Plate	2
15	12 144 09	Shaft Assembly–Throttle	1

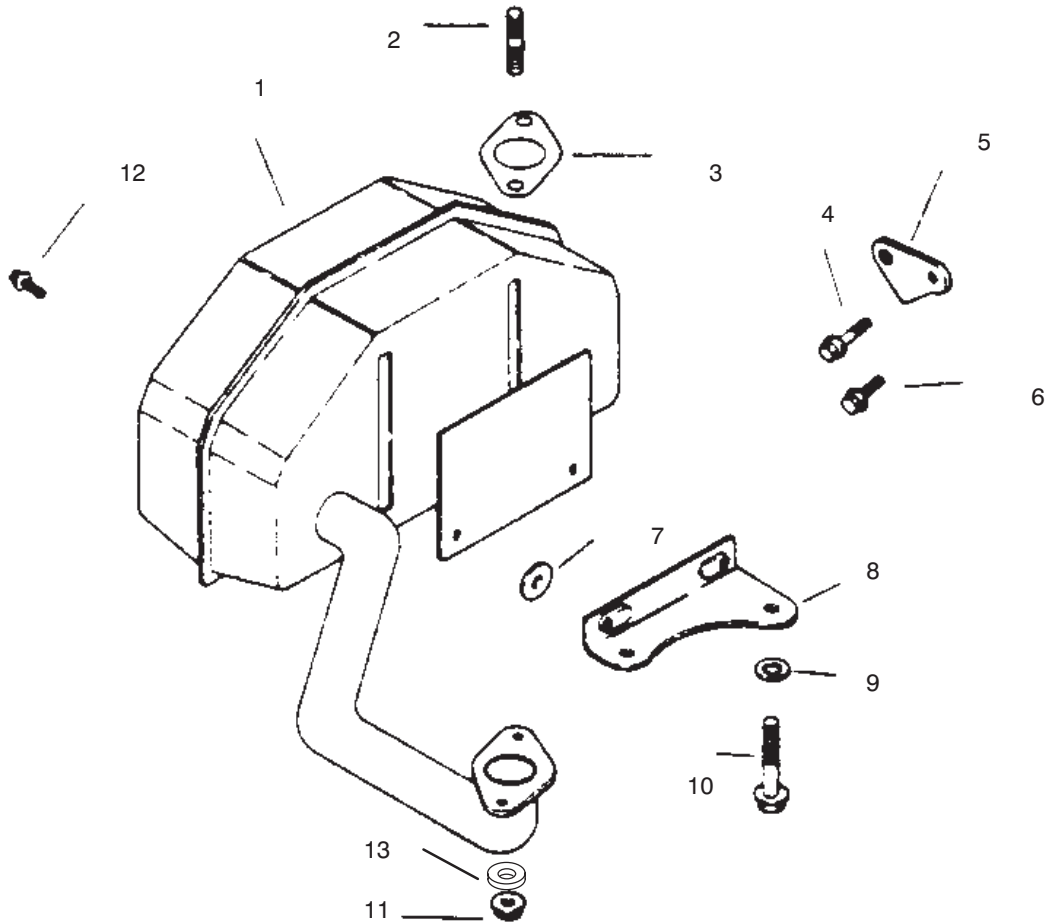
Ref. No.	Part No.	Description	No. Used
16	12 173 06	Cap – Choke Lever	1
17	12 757 08	Kit – Choke Repair (Incl. Ref.#16)	1
18	12 146 12	Plate – Choke	1
20	12 337 07	Jet – Main	1
21	12 757 02	Kit – Float	1
22	12 041 05	Gasket – Bowl	1
23	12 104 01	Bowl – Fuel	1
24	12 041 06	Gasket – Bowl	1
25	12 086 05	Screw – Bowl	1
26	M-0641060	Nut – Carburetor	2
27	M-0629122	Stud – Carburetor	2
*	12 757 01	Kit – Carburetor Repair	1
*	12 755 36	Kit – Kit High Altitude Jet	1
*	12 853 47	Kit – Carburetor (Incl Ref. #2-6)	1



ENGINE CONTROLS

Ref. No.	Part No.	Description	No. Used
1	12 079 07	Linkage - Choke	1
2	12 237 01	Clamp - Cable	1
3	M-0645016	Screw - Hex. Hd.	2
4	SM-0545016	Screw - Cable Clamp	1
5	12 536 01	Control - Speed (incl Ref.#6-8)	1
6	SM-0443025	Screw	1
7	12 089 11	Spring	1

Ref. No.	Part No.	Description	No. Used
8	12 089 23	Spring - Choke	1
9	12 089 19	Spring - Governor	1
10	M-0641060	Nut - Governor	1
11	SM-0642025	Screw - Governor	1
12	12 090 05	Lever - Governor	1
13	25 158 11	Bushing - Black Retainer	1
14	12 079 01	Linkage - Throttle	1
15	25 158 08	Bushing - Natural, Linkage	1



EXHAUST

Ref. No.	Part No.	Description	No. Used
1	12 068 03	Muffler	1
2	M-0829033	Stud - Exhaust Manifold	2
3	12 041 03	Gasket - Exhaust	1
4	M-0645025	Screw - Lifting Strap	1
5	12 445 01	Strap - Lifting	1
6	M-0645020	Screw - Valve Cover	1
7	X-25-52	Washer	2
8	12 126 39	Bracket - Muffler	1

Ref. No.	Part No.	Description	No. Used
9	12 468 01	Washer - Flat	1
10	12 086 13	Screw - Oil Pan	1
11	M-0841080	Nut - Muffler	2
12	M-0650012	Screw - Muffler	2
13	3253-4	Washer	2
*	12 755 01	Gasket Set	1
	12 755 30	Kit - Bracket	1

TORO PART NUMBER INDEX

Part No.	Description	Pg. Ref. No. No. Qty.	Part No.	Description	Pg. Ref. No. No. Qty.
112843	Washer – Clutch	3 12 1	71-1280	Decal – Danger	6 36 1
608006	Key – Crankshaft	3 15 1	72-2190	Mount – Shift Lever	5 4 1
7-5461	Spacer	5 5 1	74-0040	Spacer – Pivot Idler	1 19 4
10-8110	Washer – Flat	5 29A/R	74-0050	Sheave – Lower Half	3 10 1
12-3270	Screw	2 38 1	74-0060	Sheave – Upper Half	3 9 1
16-7509	Lever – Idler	1 25 1	74-0220	Idler – Bracket L.H.	1 8 1
26-9671	Belt – Traction	5 39 1	74-0230	Idler – Bracket R.H.	1 * 2
27-6230	Bolt – Wheel	1 23 1	74-0320	Lever – Shift	5 9 1
29-5560	Switch – Off/On	6 27 1	74-0360	Frame – Rear	2 34 1
44-8310	Ring – Retaining	4 3 2	74-0380	Control – Pivot	6 24 1
44-8320	Spring	4 10 3	74-0470	Rod – Pivot	6 21 1
44-8330	Spacer – Pulley Bearing	4 6 1	74-0480	Pulley – Drive	5 17 2
44-8340	Collar – Bearing	4 7 1	74-0490	Decal – Fuel Shut Off	2 33 1
44-8360	Field Coil, Rotor & Bearing	4 4 1	74-0510	Valve – Fuel	2 35 1
47-1970	Grip – Engagement	5 8 1	74-0521	Fitting – Rod	1 10 2
47-2964	Line – Fuel	3 5 1	74-0610	Transmission	5 3 1
47-2982	Hose – Fuel	1 3 1	74-0630	Control – Throttle	6 19 1
51-4160	Pulley – Wheel	5 30 4	74-0720	Tube – Manual	6 2 1
51-4170	Spacer – Pulley	5 31 8	74-0930	Guard – Pulley	3 16 1
51-4180	Drum – Brake	5 32 2	74-0950	Elbow	3 19 2
51-4190	Pulley – Driven	5 40 1	82-2180	Panel – Control	6 3 1
51-4220	Guard – Coupler	5 43 2	82-2190	Switch – Bail	6 35 1
51-4230	Washer – Wheel	5 37 2	82-2260	Wire Harness	1 71
51-4240	Shaft – Extension R.H.	5 14 1	82-2280	Decal – Reverse Handle	6 26 1
51-4250	Shaft – Extension L.H.	5 * 1	82-2290	Decal – Control Bar	6 12 1
51-4260	Coupler	5 45 2	82-2300	Switch – Clutch	6 20 1
51-4270	Bearing – Shaft Extension	5 12 2	82-3820	Boot	6 17 1
51-4290	Belt – Drive	5 18 2	82-7631	Rod – Control	6 5 2
51-4370	Spring – Torsion R.H.	1 * 1	82-7680	Bail Assembly	6 11 1
51-4380	Spring – Torsion L.H.	1 17 1	82-7690	Bar – Control	6 15 1
51-4450	Screw – Leveler	1 18 2	82-7730	Decal – Proline	6 4 1
51-4480	Idler – Wheel	1 15 2	82-7750	Decal – Ground Speed	2 32 1
51-4490	Spacer – Idler Wheel	1 16 2	82-8440	Tank – Fuel	2 37 1
51-4540	Retainer – Clutch	3 17 1	86-7910	Module	6 39 1
51-4580	Rod – Brake	5 19 2	86-7910	Module – Interlock	7 3 1
51-4600	Brake Arm R.H.	5 * 1	92-1746	Bearing	5 27 4
51-4610	Brake Arm L.H.	5 20 1	93-1156	Frame	1 28 1
51-4650	Link – Brake	5 22 2	218-461	Nut	6 18 1
51-4660	Plate – Link Brake	5 35 2	218-595	Connector – Bail	7 * 1
51-4700	Brake Band Assembly	5 33 2	218-595	Connector – Body	6 42 1
51-4850	Lever – Brake, Parking	6 6 1	231-117	Tire	5 23 2
52-2010	Decal – Parking Brake	6 7 1	232-27	Valve Stem	5 25 2
52-2890	Bushing	2 40 2	237-7	"O"Ring	2 36 1
54-0230	Field Ass'y	4 1 1	237-124	Grommet	1 21 1
54-3200	Clutch Assembly	3 11 1	237-141	Grommet – Rubber	6 8 2
55-3570	Cap – Fuel Tank	1 1 1	242-80	Rim	5 24 2
55-7410	Armature & Pulley Assembly	4 5 1	2412-87	Clamp – Hose	3 21 1
56-6360	Filter – Fuel	3 4 1	2412-98	Clamp – Fuel Filter	3 3 3
57-5811	Panel – Bottom	6 28 1	2412-103	Clamp – Fuel line	1 2 1
57-6360	Screw – Hex. Hd.	3 14 1	2412-108	Clamp	3 23 1
57-6380	Screw – Hex. Hd.	3 8 4	2412-120	RClamp	6 33 2
62-4540	Pulley – Idler	1 26 1	251-291	Bearing – Pulley	4 8 1
63-7590	Relay	7 2 1	251-292	Bearing – Field	4 2 1
63-7590	Relay	6 38 1	256-155	Bushing	1 24 2
63-8360	Key	6 16 2	283-6	Pin – Clevis	1 9 4
63-8440	Decal – Hot	3 2 1	288-4	Cap – Pipe	3 18 1
65-3090	Decal – Instruction	6 37 1	289-51	Nipple	3 20 1
66-7400	Plate – Control	2 31 1	302-5	Fitting – Grease	5 44 2
67-6370	Bracket – Support R.H.	1 * 1	302-11	Fitting – Grease	5 28 2
67-6380	Bracket – Support L.H.	1 11 1	321-1	Screw	6 40 2
67-6440	Handle – Upper	6 1 1	321-4	Screw – Hex. Hd.	5 13 4
68-2190	Spring – Extension	1 22 1	322-2	Screw – Hex. Hd.	5 1 4
68-9690	Fitting – Rod	1 6 2	322-4	Screw – Hex. Hd.	1 29 4

*Not Illustrated

