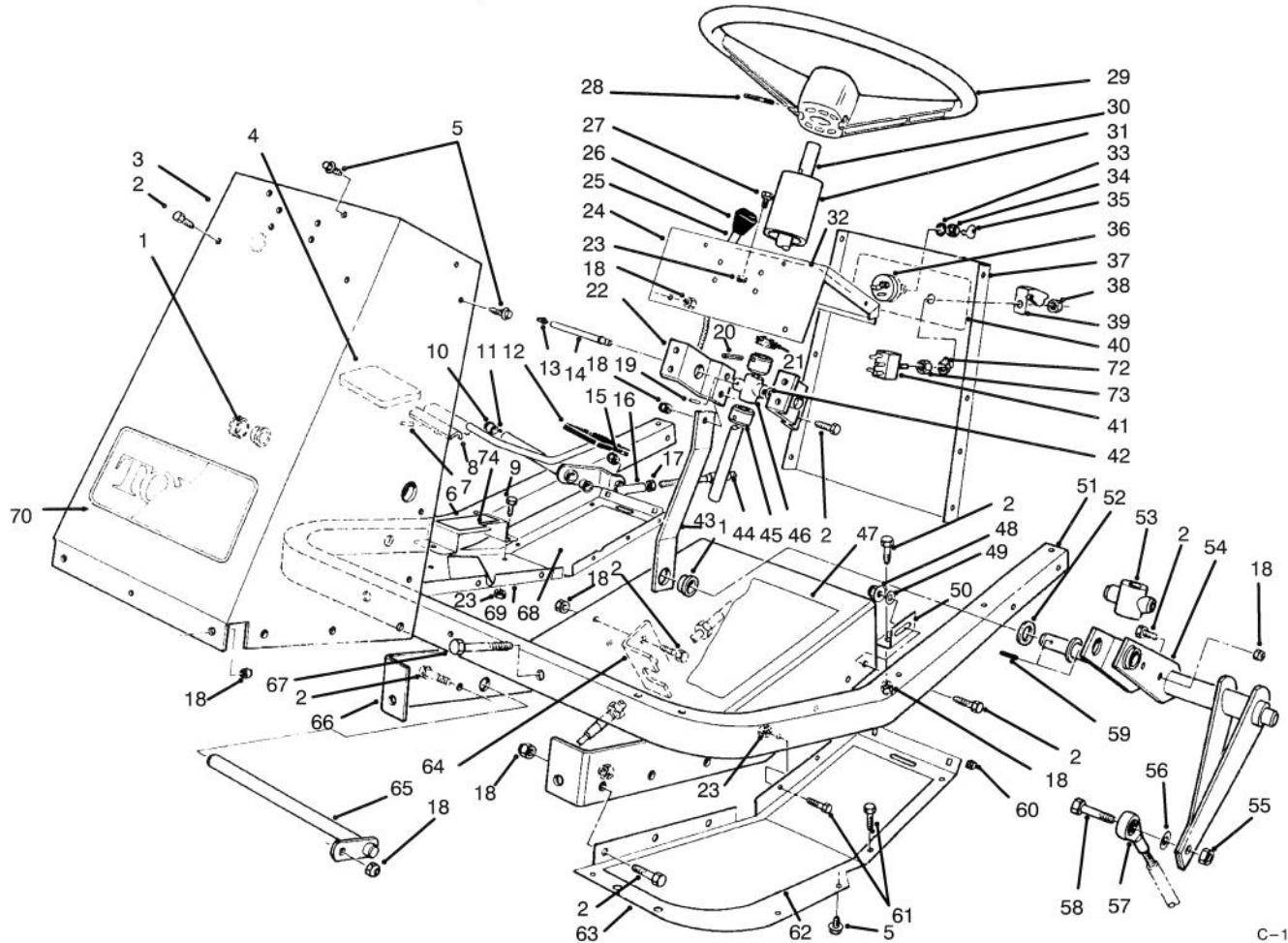




MODEL NO. 30610-690001 & UP

PARTS
CATALOG

GROUNDMASTER® 120

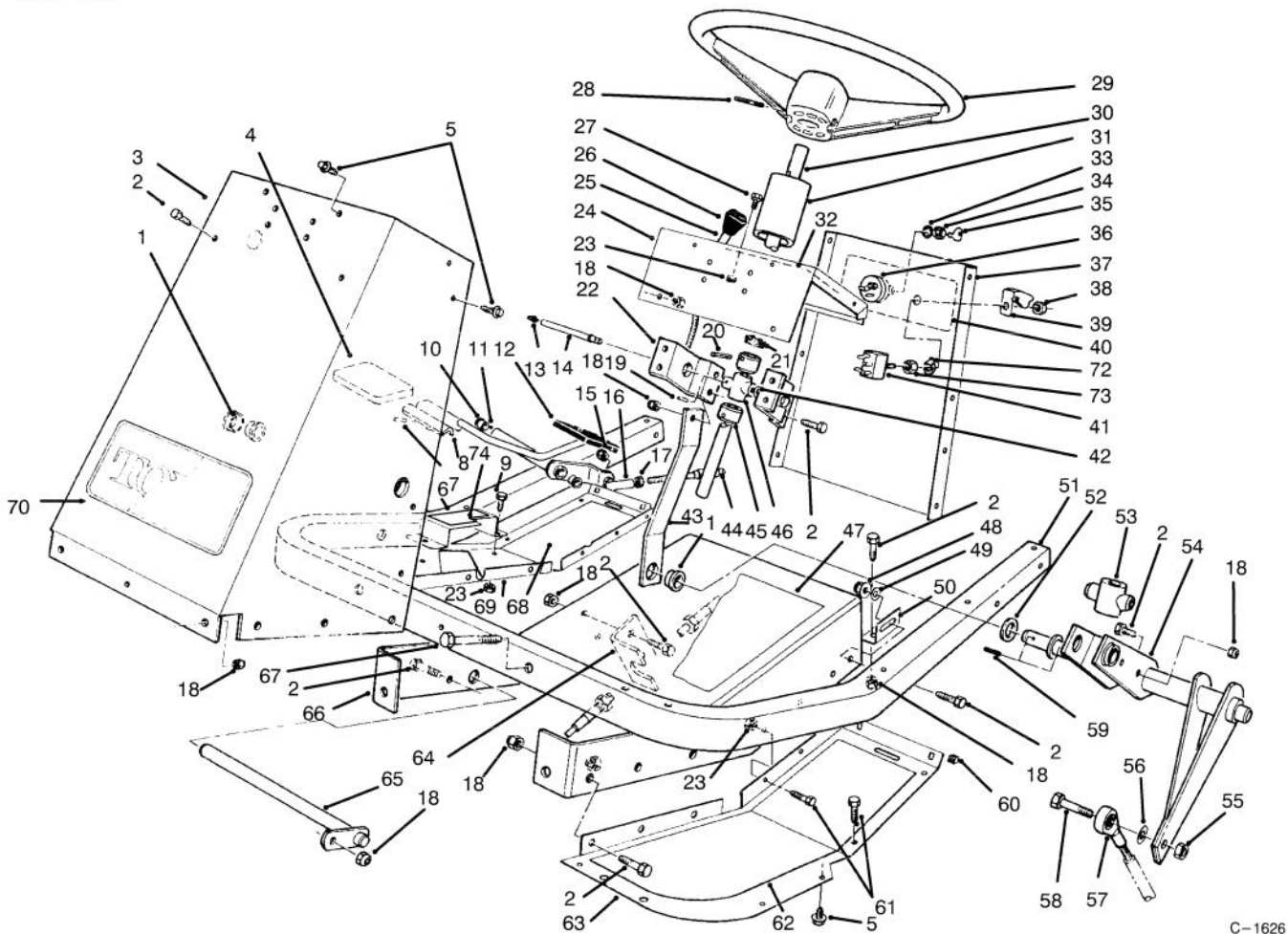


C-1626

FRAME & STEERING ASSEMBLY

| Ref. No. | Part No. | Description | No. Used |
|----------|----------|--------------------------------------|----------|
| 1 | 27-9080 | Bushing | 3 |
| 2 | 322-4 | Screw - Hex. Hd. | 19 |
| 3 | 54-1900 | Tower - Front | 1 |
| 4 | 49-6470 | Pad - Accelerator | 1 |
| 5 | 46-8560 | Screw - Hex. Hd. | 25 |
| 6 | 80-4930 | Footrest - Pedal | 1 |
| 7 | 32121-51 | Pin - Roll | 1 |
| 8 | 80-4920 | Pedal - Accelerator | 1 |
| 9 | 321-3 | Screw - Hex. Hd. | 2 |
| 10 | 256-156 | Bushing | 2 |
| 11 | 74-0110 | Pedal - Traction (Incl. Ref. #10) | 1 |
| 12 | 49-6430 | Pad - Reverse | 1 |
| 13 | 302-22 | Fitting - Grease | 1 |
| 14 | 59-1610 | Tube - Grease Fitting | 1 |

| Ref. No. | Part No. | Description | No. Used |
|----------|----------|---------------------------|----------|
| 15 | 3296-3 | Nut - Hex. | 1 |
| 16 | 2411-34 | Ball Joint | 1 |
| 17 | 3220-1 | Nut - Jam | 1 |
| 18 | 3296-29 | Nut - Lock | 24 |
| 19 | 32121-20 | Pin - Roll | 1 |
| 20 | 32121-31 | Pin - Roll | 2 |
| 21 | 21-9260 | Cover - Dust | 1 |
| 22 | 54-1950 | Bracket - Support Bearing | 2 |
| 23 | 3296-42 | Nut - Lock | 16 |
| 24 | 54-1000 | Tower - Top | 1 |
| 25 | 54-1451 | Control - Throttle, Choke | 2 |
| 26 | 66-0120 | Knob | 2 |
| 27 | 321-2 | Screw - Hex. Hd. | 4 |
| 28 | 32121-10 | Pin - Roll | 1 |

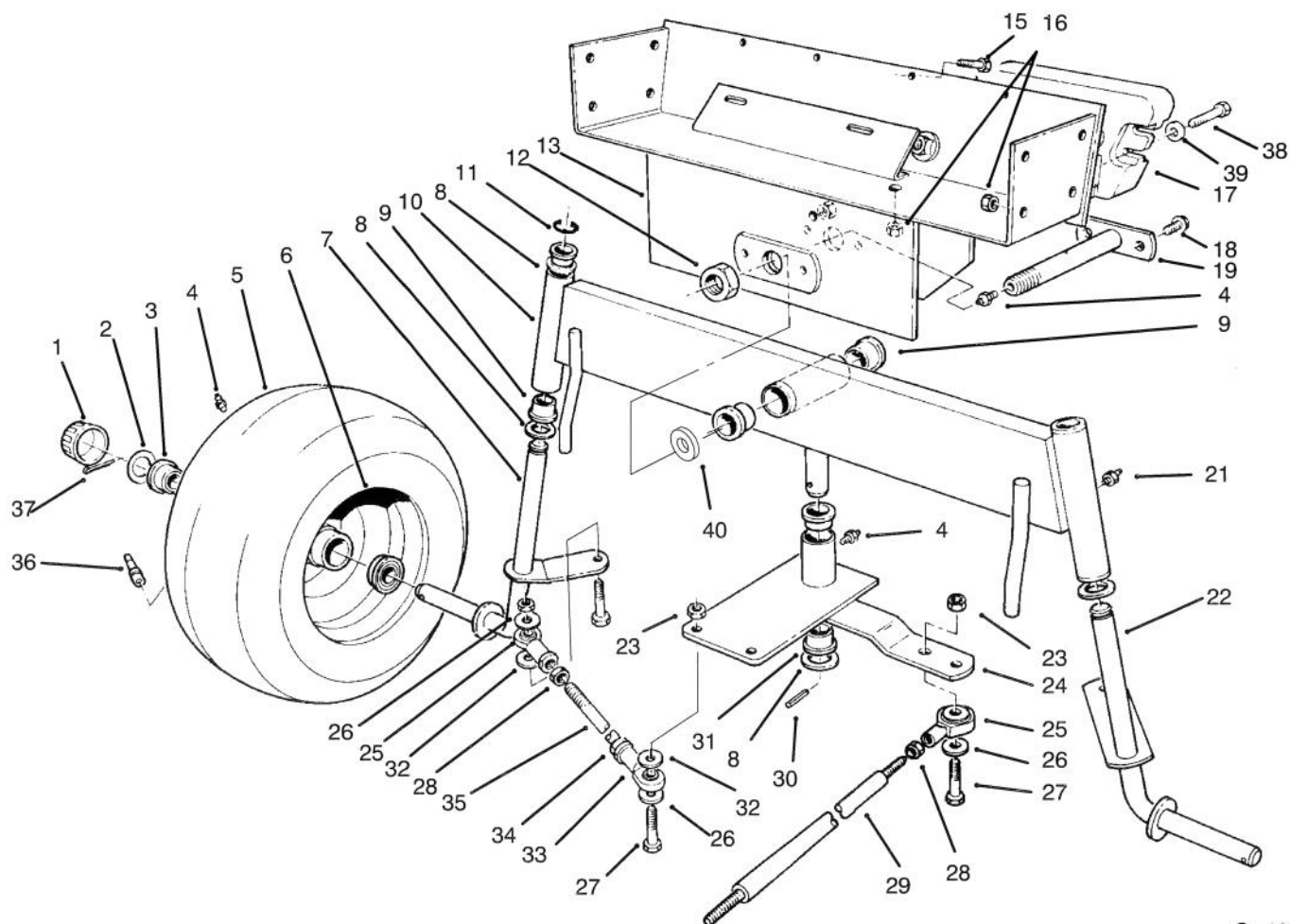


C-1626

FRAME & STEERING ASSEMBLY

| Ref. No. | Part No. | Description | No. Used |
|----------|----------|---|----------|
| 29 | 88-3850 | Wheel - Steering | 1 |
| 30 | 62-6780 | Shaft - Steering | 1 |
| 31 | 47-1980 | Cover Steering Shaft | 1 |
| 32 | 92-6278 | Decal - Throttle Choke | 1 |
| 33 | | Washer - Lock | 1 |
| 34 | | Nut - Lock | 1 |
| 35 | 63-8360 | Key | 2 |
| 36 | 88-9830 | Switch - Ignition (Incl. Ref. #33-35) | 1 |
| 37 | 92-6266 | Panel - Tower Rear | 1 |
| 38 | 113179 | Nut | 1 |
| 39 | 113050 | Cover - P.T.O. Switch | 1 |
| 40 | 92-6277 | Decal - Switch | 1 |
| 41 | 116716 | Switch - Clutch & Brake (Incl. Ref. # 38, 72 & 73) | 1 |
| 42 | 3290-440 | Washer - Belleville | 1 |
| 43 | 54-1340 | Link - Steering | 1 |
| 44 | 54-2640 | Cable - Traction Control | 1 |
| 45 | 28-3940 | Collar - Steering Shaft | 2 |
| 46 | 60-9050 | Bearing - Steering Shaft | 1 |
| 47 | 54-0880 | Decal - Tunnel | 1 |
| 48 | 32128-20 | Nut - Flange Lock | 2 |
| 49 | 3256-23 | Washer - Flat | 4 |
| 50 | 54-1440 | Bracket - Tunnel | 2 |

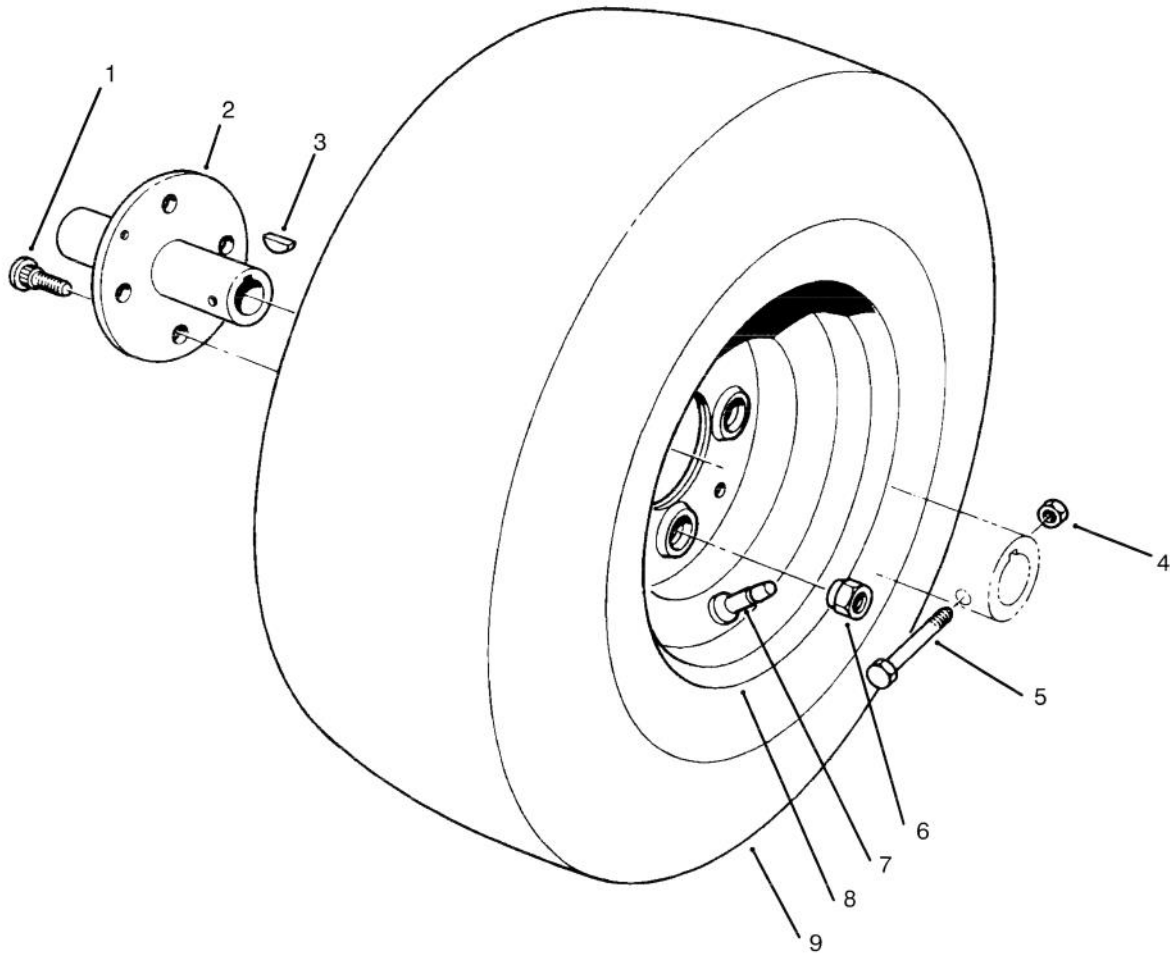
| Ref. No. | Part No. | Description | No. Used |
|----------|----------|---------------------------|----------|
| 51 | 60-9140 | Frame - Footrest | 1 |
| 52 | 3-6498 | Washer - Thrust | 2 |
| 53 | 54-2630 | Follower - Steering Shaft | 1 |
| 54 | 54-2040 | Follower Lever | 1 |
| 55 | 3296-48 | Nut - Lock | 1 |
| 56 | 3256-4 | Washer - Flat | 1 |
| 57 | 251-304 | Rod End | 1 |
| 58 | 324-7 | Screw - Hex. Hd. | 1 |
| 59 | 32121-77 | Pin Roll | 2 |
| 60 | 32115-5 | Nut - Square | 4 |
| 61 | 321-4 | Screw - Hex. Hd. | 14 |
| 62 | 54-2260 | Pad Footrest L.H. | 1 |
| 63 | 54-1470 | Footrest - L.H. | 1 |
| 64 | 54-1770 | Bracket - Cable Traction | 1 |
| 65 | 59-1550 | Pedal - Shaft | 1 |
| 66 | 60-9150 | Tunnel | 1 |
| 67 | 322-10 | Screw - Hex. Hd. | 2 |
| 68 | 54-2270 | Pad - Footrest R.H. | 1 |
| 69 | 80-4910 | Footrest - R.H. | 1 |
| 70 | 62-7400 | Decal - Toro | 1 |
| 72 | 102950 | Washer | 1 |
| 73 | 105805 | Nut | 1 |
| 74 | 82-4720 | Pad - Footrest | 1 |



C-1627

REAR AXLE ASSEMBLY

| Ref. No. | Part No. | Description | No. Used | Ref. No. | Part No. | Description | No. Used |
|----------|----------|-------------------------------------|----------|----------|----------|--------------------------------------|----------|
| 1 | 61-9780 | Hub Cap | 2 | 22 | 54-0560 | Spindle L. H. | 1 |
| 2 | 28-2480 | Washer - Flat | 2 | 23 | 3296-48 | Nut | 5 |
| 3 | 251-210 | Bearing - Ball | 4 | 24 | 92-6257 | Plate- Pivot (Incl. Ref. #4 & 30) | 1 |
| 4 | 302-5 | Fitting - Grease | 4 | 25 | 251-305 | Rod End | 3 |
| 5 | 231-126 | Tire | 2 | 26 | 3256-4 | Washer - Flat | 7 |
| 6 | 242-60 | Rim | 2 | 27 | 324-7 | Screw | 5 |
| 7 | 54-0570 | Spindle R.H. | 1 | 28 | 3220-4 | Nut - Jam | 3 |
| 8 | 3-6498 | Washer - Thrust | 5 | 29 | 54-1491 | Rod - Steering , Rear | 1 |
| 9 | 46-6680 | Bushing | 6 | 30 | 32121-51 | Pin - Roll | 1 |
| 10 | 92-6255 | Axle - Rear (Incl. Ref. #9 & 20) | 1 | 31 | 27-9080 | Bushing | 2 |
| 11 | 32151-48 | Ring - Retaining | 2 | 32 | 62-4420 | Spacer | 9 |
| 12 | 3296-41 | Nut - Hex. | 1 | 33 | 251-304 | Rod End | 2 |
| 13 | 54-0330 | Frame - Rear | 1 | 34 | 3220-19 | Nut - Jam | 2 |
| 15 | 321-4 | Screw | 4 | 35 | 57-3100 | Tie Rod - Steering | 2 |
| 16 | 3296-29 | Nut | 8 | 36 | 232-27 | Valve Stem w/Cap | 2 |
| 17 | 24-5790 | Weight - Rear | 1 | 37 | 3272-12 | Pin - Cotter | 2 |
| 18 | 32144-15 | Screw | 2 | 38 | 325-6 | Screw | 2 |
| 19 | 59-1500 | Pivot - Axle | 1 | 39 | 3253-7 | Washer | 2 |
| 21 | 302-49 | Fitting - Grease | 3 | 40 | 3256-39 | Washer | 1 |

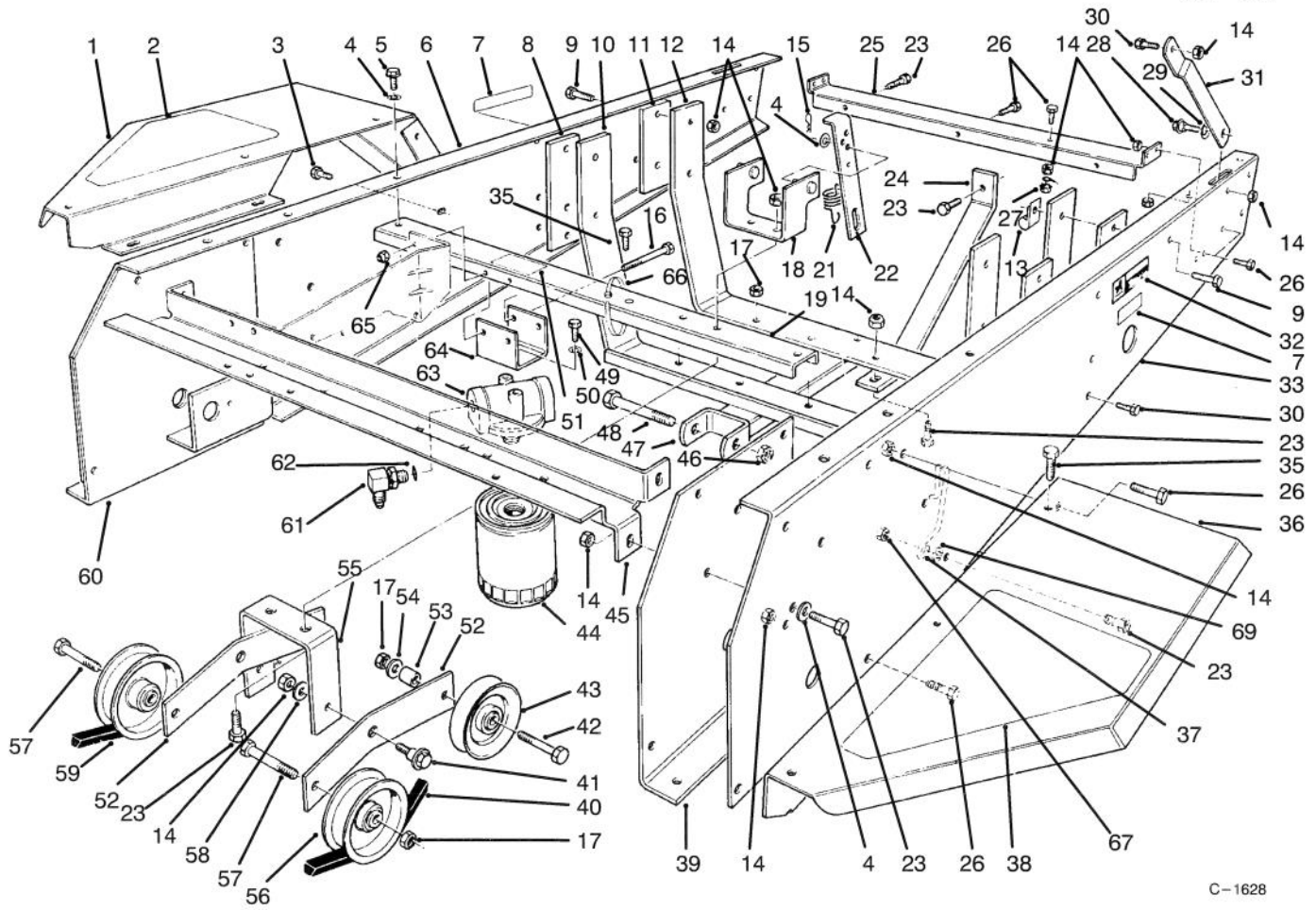


T-0071

FRONT WHEEL ASSEMBLY

| Ref. No. | Part No. | Description | No. Used |
|----------|----------|----------------|----------|
| 1 | 242-71 | Bolt - Wheel | 8 |
| 2 | 54-0140 | Hub - Wheel | 2 |
| 3 | 3257-10 | Key - Woodruff | 2 |
| 4 | 3296-29 | Nut - Lock | 2 |
| 5 | 322-10 | Screw | 2 |

| Ref. No. | Part No. | Description | No. Used |
|----------|----------|------------------|----------|
| 6 | 242-50 | Nut | 8 |
| 7 | 232-27 | Valve Stem w/Cap | 2 |
| 8 | 242-76 | Rim | 2 |
| 9 | 231-122 | Tire | 2 |

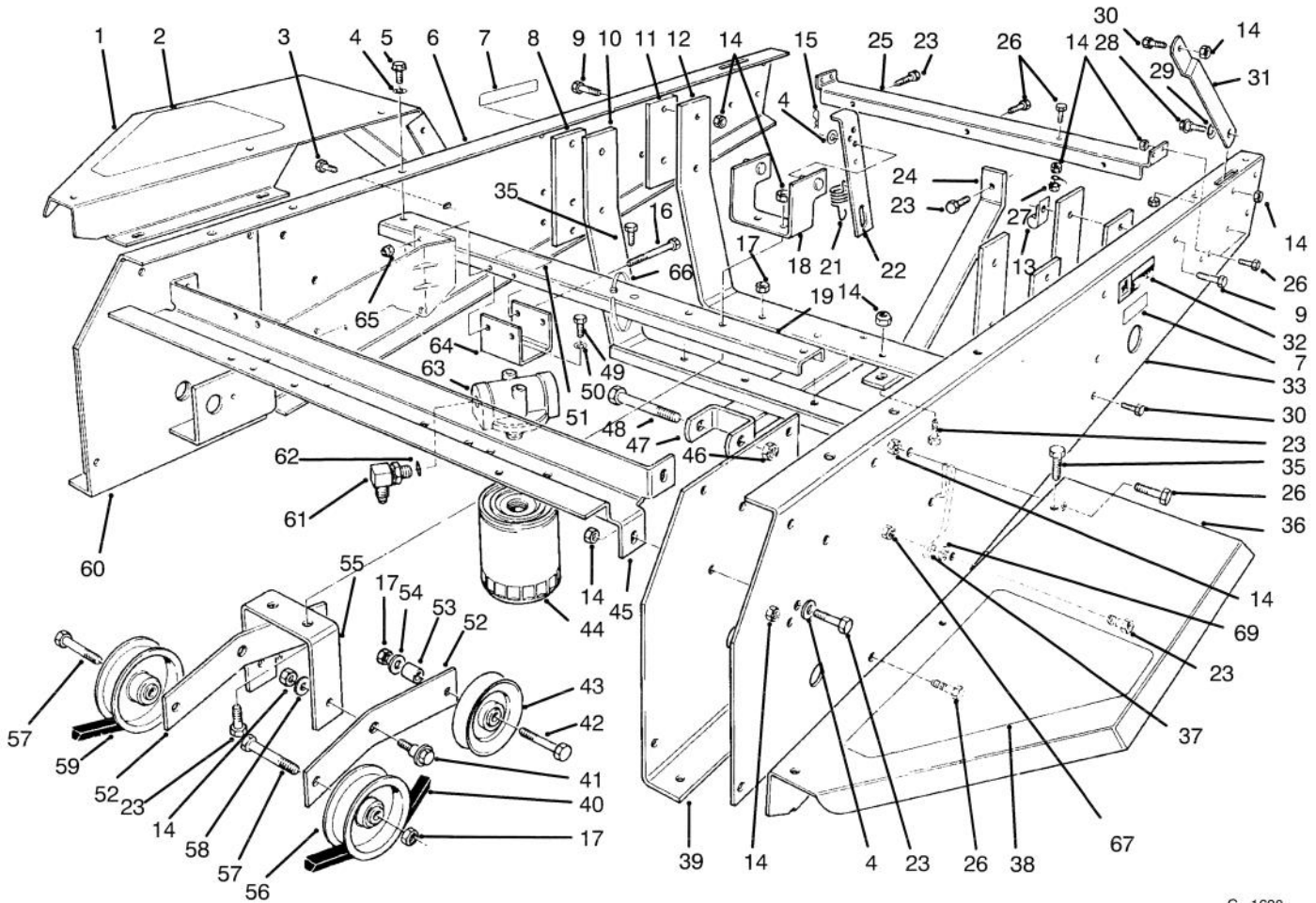


C-1628

FRAME & JACKSHAFT ASSEMBLY

| Ref. No. | Part No. | Description | No. Used |
|----------|----------|------------------------|----------|
| 1 | 54-1930 | Fender R.H. | 1 |
| 2 | 92-6292 | Pad - Fender R.H. | 1 |
| 3 | 3234-14 | Screw | 4 |
| 4 | 3256-23 | Washer - Flat | 8 |
| 5 | 32144-11 | Screw - Thread Forming | 2 |
| 6 | 54-1910 | Channel - Side R.H. | 1 |
| 7 | 77-3100 | Decal - Caution | 2 |
| 8 | 54-1800 | Plate - Engine Front | 2 |
| 9 | 322-6 | Screw | 8 |
| 10 | 92-6250 | Mount - Engine | 1 |
| 11 | 54-1810 | Plate - Engine, Rear | 2 |
| 12 | 92-6251 | Mount - Engine | 1 |
| 13 | 2412-100 | "J"Clamp | 2 |
| 14 | 3296-29 | Nut | 33 |
| 15 | 3290-250 | Pin - Cotter | 2 |
| 16 | 321-14 | Screw | 2 |
| 17 | 3296-44 | Nut | 4 |
| 18 | 54-2070 | Anchor - Spring | 1 |
| 19 | 54-2500 | Channel - Middle | 1 |
| 20 | 323-7 | Screw | 3 |
| 21 | 54-1410 | Spring - Idler | 2 |
| 22 | 54-1130 | Link - Idler Anchor | 2 |

| Ref. No. | Part No. | Description | No. Used |
|----------|----------|---------------------------|----------|
| 23 | 322-6 | Screw | 11 |
| 24 | 92-6254 | Bar - Tension | 1 |
| 25 | 54-1830 | Support - Shield | 1 |
| 26 | 322-4 | Screw | 13 |
| 27 | 32149-1 | Nut - Lock | 1 |
| 28 | 27-0410 | Bolt - Shoulder | 2 |
| 29 | 3290-211 | Washer - Spring | 2 |
| 30 | 322-2 | Screw | 4 |
| 31 | 54-1870 | Stop - Hood, Lower | 2 |
| 32 | 54-0910 | Decal - Warning | 1 |
| 33 | 54-1920 | Channel - Side L.H. | 1 |
| 35 | 46-8560 | Screw | 7 |
| 36 | 54-1940 | Fender L.H. | 1 |
| 37 | 55-4860 | Guide - Belt | 1 |
| 38 | 92-6293 | Pad - Fender L.H. | 1 |
| 39 | 54-0460 | Axle Stand - L.H. | 1 |
| 40 | 54-1380 | JackShaft - "V" Belt | 1 |
| 41 | 19-1470 | Bolt - Shoulder | 2 |
| 42 | 323-11 | Screw | 2 |
| 43 | 62-4530 | Idler - "V" Belt | 2 |
| 44 | 54-0110 | Filter - Transmission Oil | 1 |
| 45 | 54-1010 | Channel - Front | 1 |

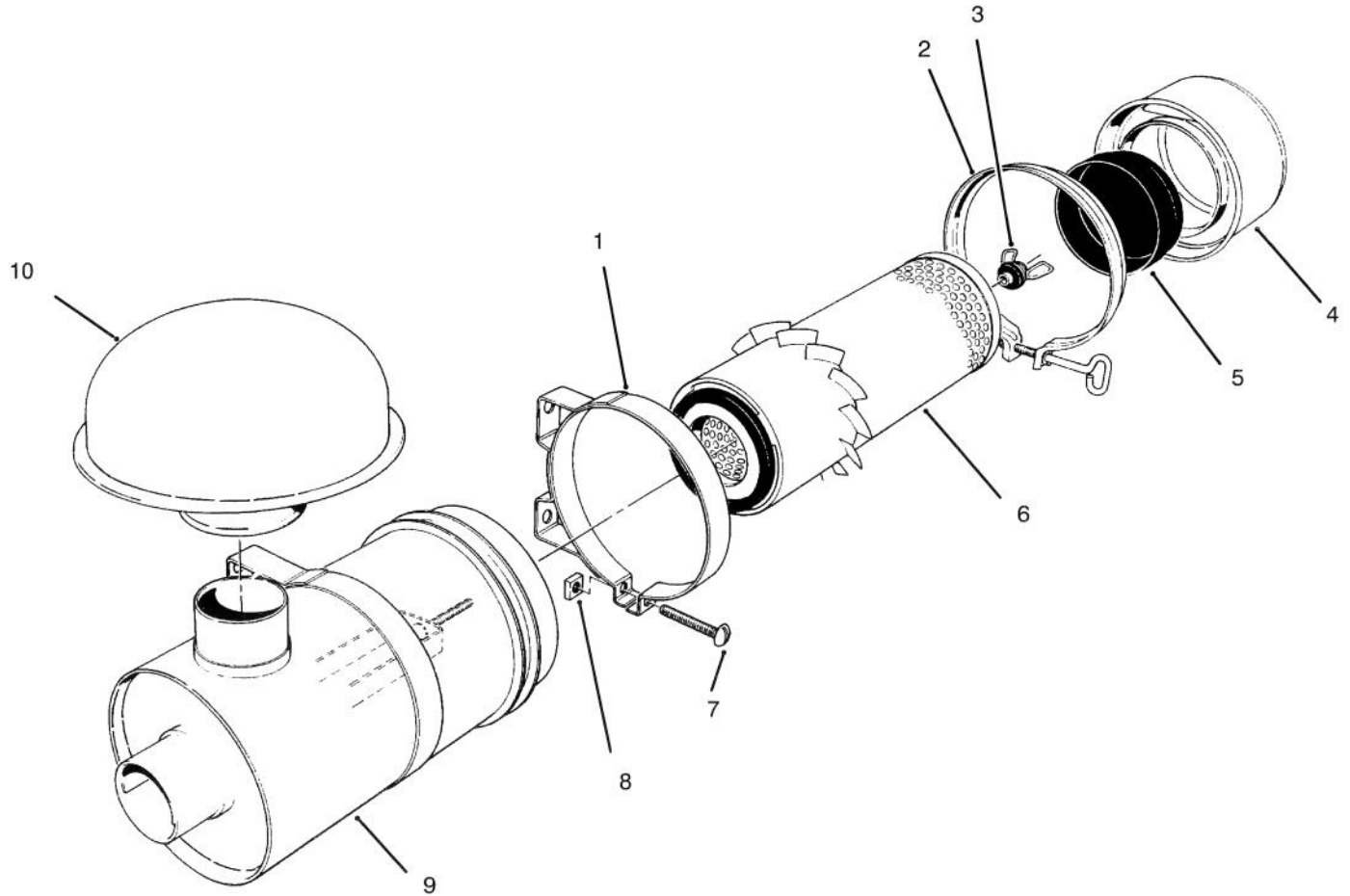


C-1628

FRAME & JACKSHAFT ASSEMBLY (Continued)

| Ref. No. | Part No. | Description | No. Used |
|----------|----------|-----------------------|----------|
| 46 | 3296-61 | Nut | 1 |
| 47 | 92-6252 | Mount - Cylinder | 1 |
| 48 | 327-24 | Screw | 1 |
| 49 | 321-3 | Screw | 2 |
| 50 | 3253-3 | Washer - Lock | 2 |
| 51 | 53-4430 | Decal - Oil | 1 |
| 52 | 54-9200 | Lever - Idler | 2 |
| 53 | 37-7250 | Spacer | 2 |
| 54 | 3256-3 | Washer - Flat | 2 |
| 55 | 54-1060 | Bracket - Idler Mount | 1 |
| 56 | 62-4540 | Idler - Flat | 2 |
| 57 | 323-9 | Screw | 2 |

| Ref. No. | Part No. | Description | No. Used |
|----------|----------|---------------------------|----------|
| 58 | 23-1120 | Washer - Flat | 2 |
| 59 | 54-1390 | "V" Belt - Traction | 1 |
| 60 | 54-0450 | Axle Stand R.H. | 1 |
| 61 | 353-371 | Fitting - 90° | 2 |
| 62 | 237-79 | "O" Ring | 1 |
| 63 | 54-0100 | Filter Head Assembly | 1 |
| 64 | 54-1120 | Bracket - Filter Head | 1 |
| 65 | 3296-42 | Nut - Lock | 2 |
| 66 | 3290-379 | Cable Tie | 7 |
| 67 | 32128-20 | Nut - Flange Lock | 1 |
| 69 | 3255-8 | Washer - Lock, Ext. Tooth | 1 |

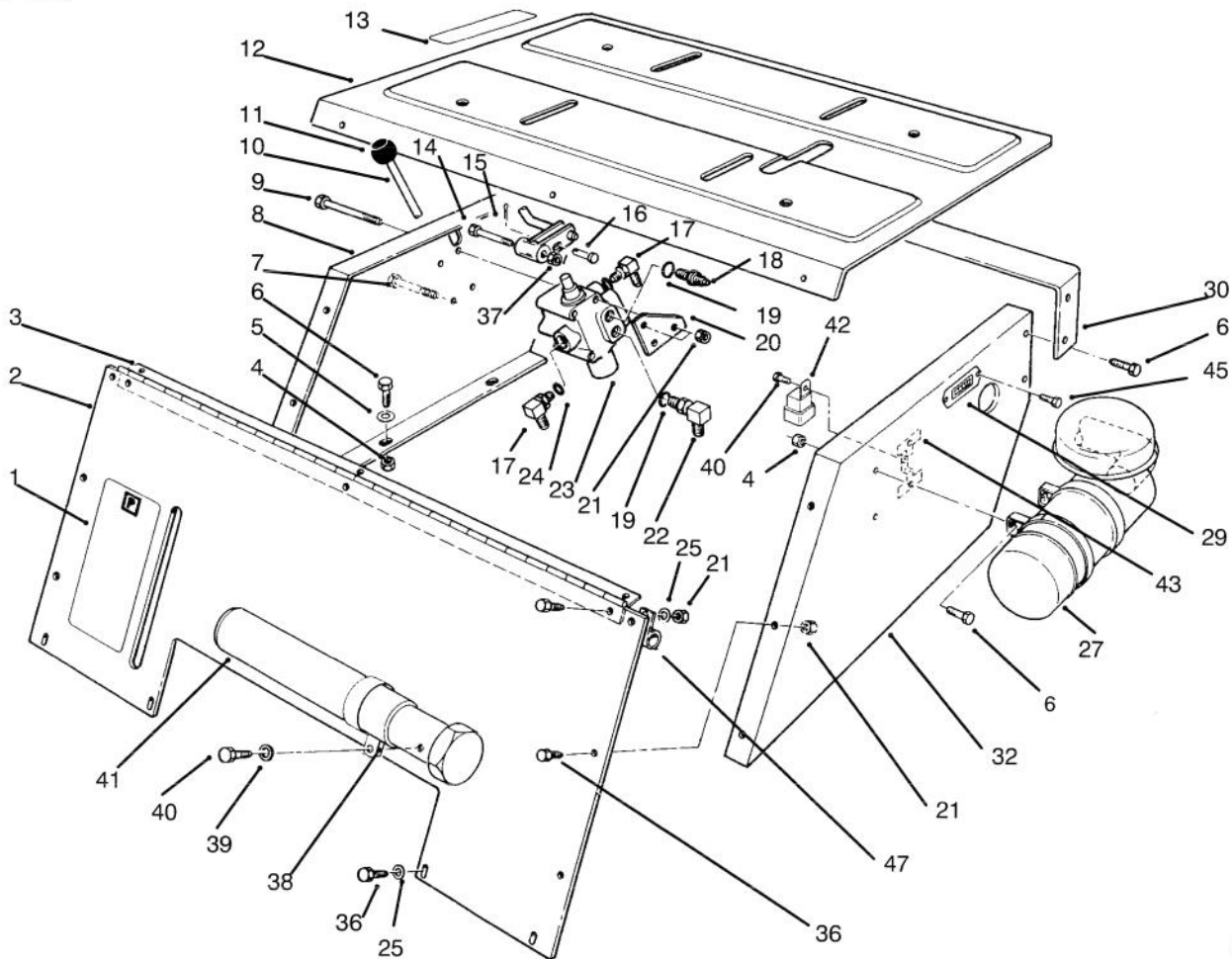


T-0248

AIR CLEANER, MODEL NO. 11-4659

| Ref. No. | Part No. | Description | No. Used |
|----------|----------|--------------------------------------|----------|
| 1 | 33-1350 | Band Assembly (Incl. Ref. #7 & 8) | 2 |
| 2 | 33-1340 | Clamp Assembly | 1 |
| 3 | 33-1330 | Nut Assembly | 1 |
| 4 | 33-1320 | Cup | 1 |
| 5 | 33-1310 | Baffle | 1 |

| Ref. No. | Part No. | Description | No. Used |
|----------|----------|-------------------|----------|
| 6 | 33-1300 | Element Assembly | 1 |
| 7 | 3258-19 | Screw - Round Hd. | 2 |
| 8 | 32107-11 | Nut - Square | 2 |
| 9 | | Body Assembly | 1 |
| 10 | 46-7510 | Hood - Intake | 1 |

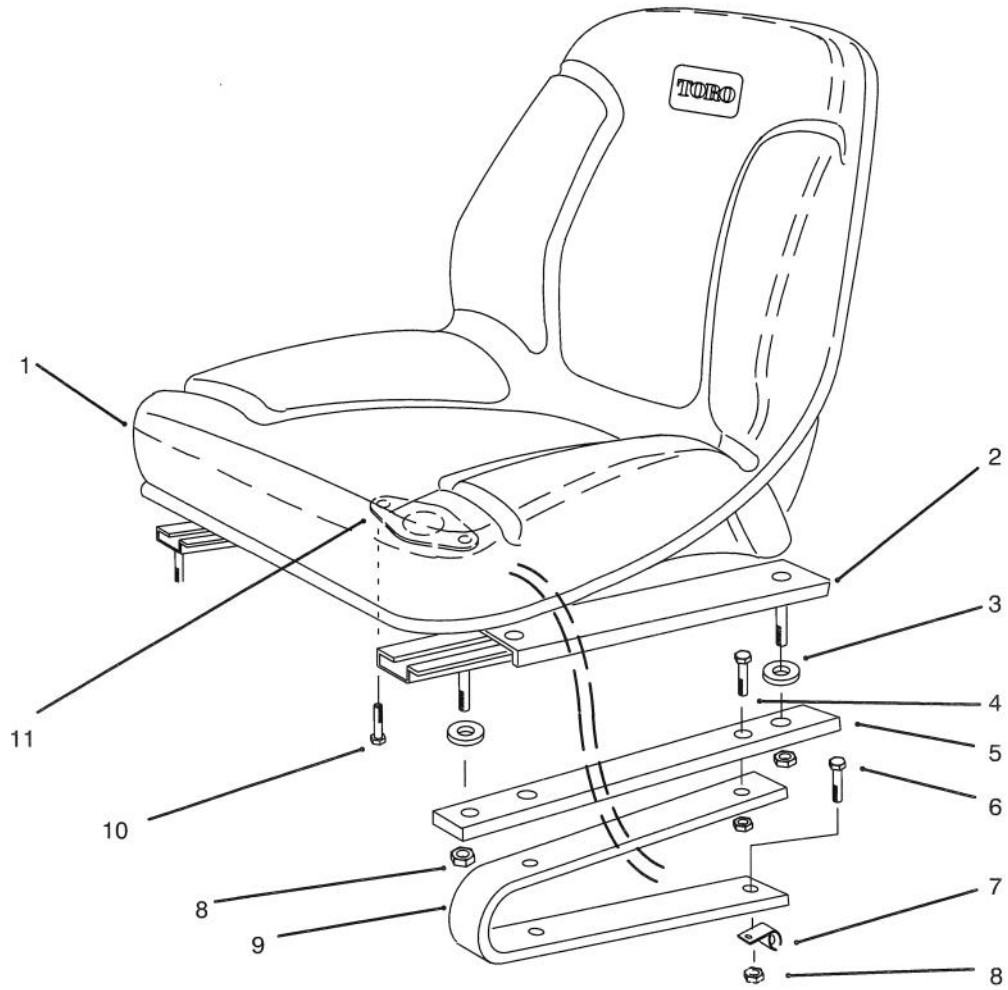


C-1629

SEAT SUPPORT ASSEMBLY

| Ref. No. | Part No. | Description | No. Used |
|----------|----------|------------------------|----------|
| 1 | 54-0920 | Decal - Parking Brake | 2 |
| 2 | 80-3760 | Support - Seat, Front | 1 |
| 3 | 54-3110 | Hinge - Seat | 1 |
| 4 | 3296-29 | Nut | 12 |
| 5 | 3256-23 | Washer - Flat | 6 |
| 6 | 322-4 | Screw | 12 |
| 7 | 321-14 | Screw | 2 |
| 8 | 54-1220 | Support - Seat R.H. | 1 |
| 9 | 321-23 | Screw | 2 |
| 10 | 82-4680 | Lever - Valve | 1 |
| 11 | 233-37 | Knob | 1 |
| 12 | 92-6281 | Plate - Seat | 1 |
| 13 | 54-0900 | Decal - Lift Control | 1 |
| 14 | 56-6590 | Screw | 1 |
| 15 | 3272-6 | Pin - Cotter | 1 |
| 16 | 283-17 | Pin - Clevis | 1 |
| 17 | 353-511 | Fitting | 2 |
| 18 | 353-545 | Fitting | 1 |
| 19 | 237-78 | "O"Ring | 2 |
| 20 | 82-4700 | Bracket - Lever, Valve | 1 |

| Ref. No. | Part No. | Description | No. Used |
|----------|----------|----------------------|----------|
| 21 | 3296-42 | Nut - Lock | 19 |
| 22 | 353-375 | Fitting - 90° | 1 |
| 23 | 54-0090 | Valve Assembly | 1 |
| 24 | 237-42 | "O"Ring | 2 |
| 25 | 3256-1 | Washer - Flat | 10 |
| 27 | 11-4659 | Air Cleaner Assembly | 1 |
| 29 | 75-6820 | Meter - Hour | 1 |
| 30 | 54-1550 | Support - Hood | 1 |
| 32 | 92-5435 | Support - Seat L.H. | 1 |
| 36 | 321-4 | Screw | 5 |
| 37 | 3296-39 | Nut | 1 |
| 38 | 2412-120 | "R"Clamp | 2 |
| 39 | 3256-51 | Washer | 2 |
| 40 | 32104-76 | Screw | 4 |
| 41 | 74-0720 | Tube - Manual | 1 |
| 42 | 63-7590 | Relay | 1 |
| 43 | 92-6259 | Bracket | 1 |
| 45 | 32144-18 | Screw | 2 |
| 47 | 2412-93 | Clamp - Wire | 1 |

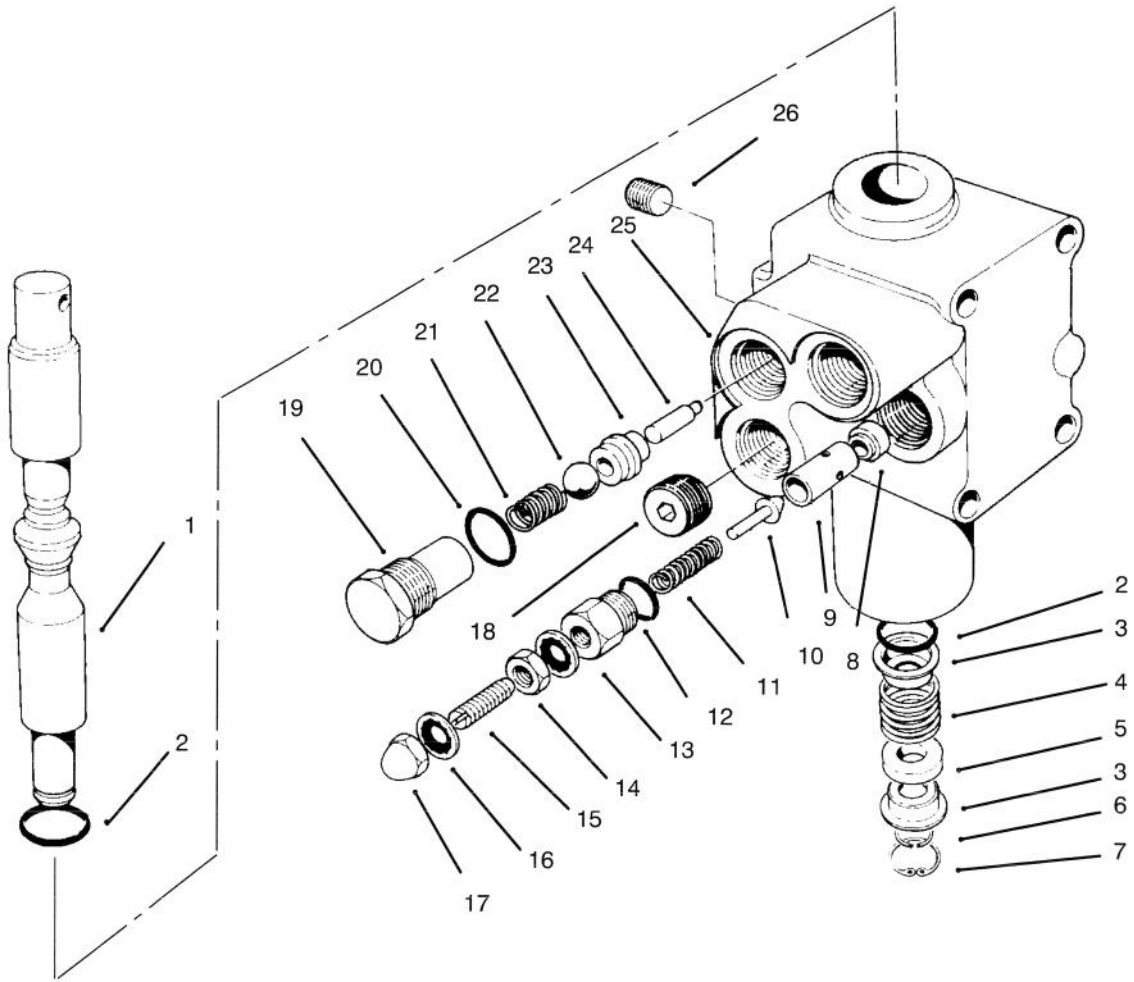


C-1603

SEAT ASSEMBLY

| Ref. No. | Part No. | Description | No. Used |
|----------|----------|----------------------------|----------|
| 1 | 92-6280 | Seat | 1 |
| 2 | 51-0790 | Slide Seat Adjust Assembly | 1 |
| * | 51-0780 | Slide Seat Assembly R.H. | 1 |
| 3 | 109989 | Spacer | 4 |
| 4 | 322-4 | Screw | 4 |
| 5 | 92-6284 | Plate - Adapter, Seat | 2 |

| Ref. No. | Part No. | Description | No. Used |
|----------|----------|---------------|----------|
| 6 | 322-5 | Screw | 4 |
| 7 | 2412-93 | Clamp - Hose | 1 |
| 8 | 3296-29 | Nut - Lock | 8 |
| 9 | 114263 | Spring - Seat | 2 |
| 10 | 321-4 | Screw | 2 |
| 11 | 92-6282 | Switch - Seat | 1 |

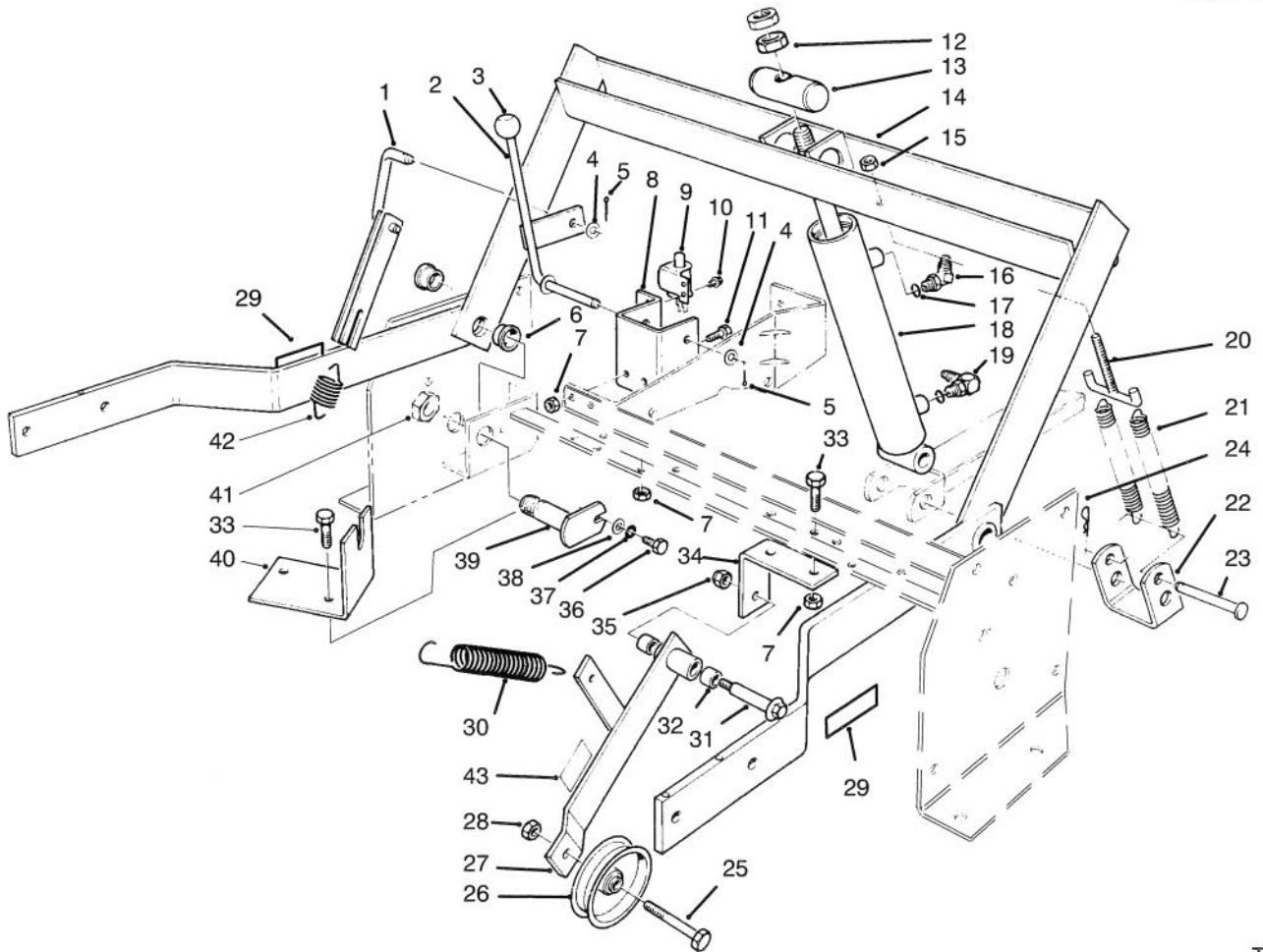


T-0075

VALVE ASSEMBLY NO. 54-0090

| Ref. No. | Part No. | Description | No. Used |
|----------|----------|---------------------|----------|
| 1 | 54-0260 | Spool | 1 |
| 2 | 22-8500 | "O"Ring | 2 |
| 3 | 22-8380 | Retainer - Spring | 2 |
| 4 | 22-8410 | Spring | 1 |
| 5 | 27-5200 | Spacer | 1 |
| 6 | 22-8480 | Ring - Retaining | 1 |
| 7 | 22-8490 | Ring - Retaining | 1 |
| 8 | 55-3640 | Seat - Relief | 1 |
| 9 | | Guide | 1 |
| 10 | | Plunger | 1 |
| 11 | | Spring | 1 |
| 12 | | "O"Ring | 1 |
| 13 | | Cap - PV Adjustment | 1 |
| 14 | | Nut | 1 |

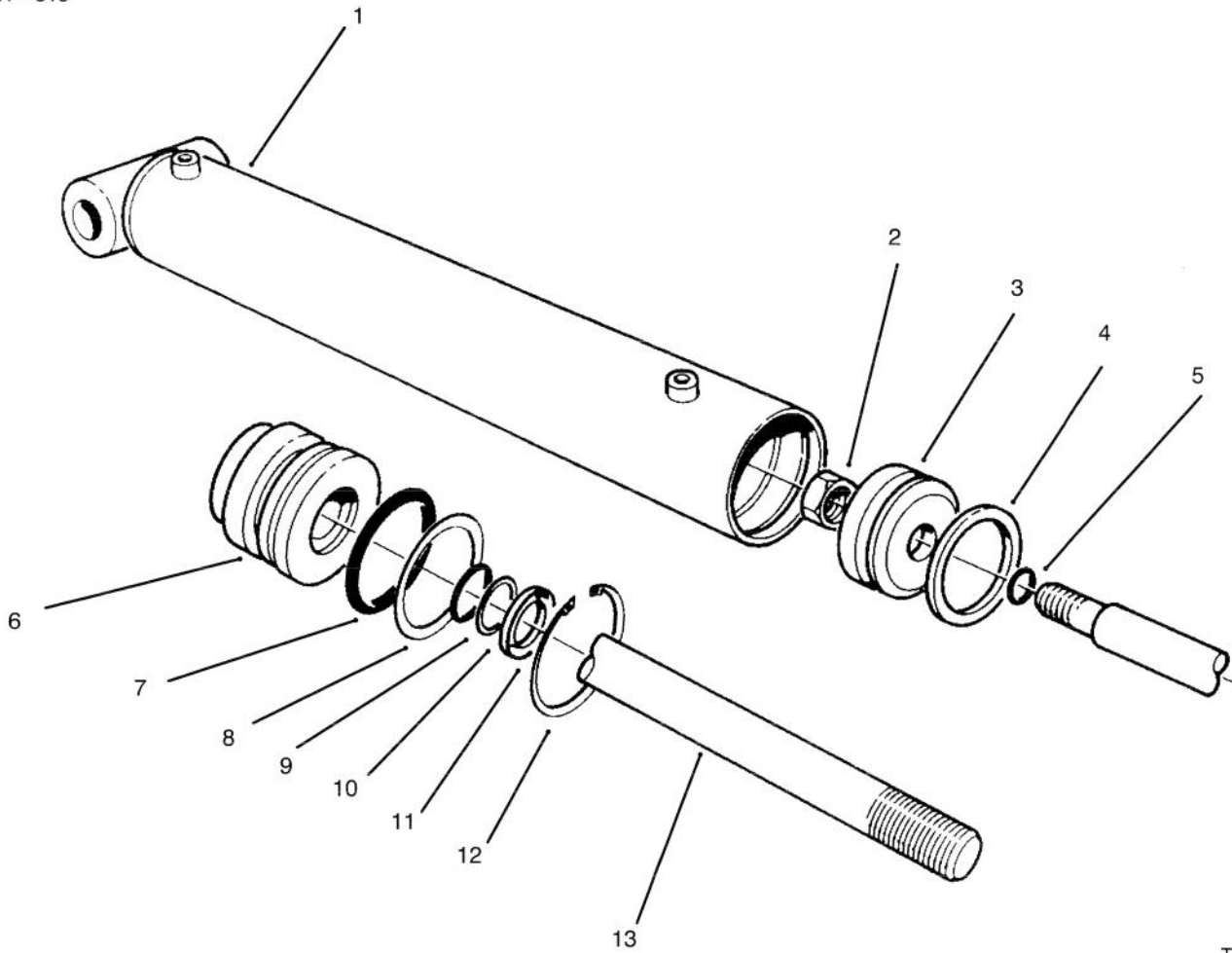
| Ref. No. | Part No. | Description | No. Used |
|----------|----------|---|----------|
| 15 | | Screw - Set | 1 |
| 16 | | Stat O Seal | 1 |
| 17 | | Nut - Acorn | 1 |
| 18 | 28-1120 | Plug | 1 |
| 19 | 22-8330 | Plug | 1 |
| 20 | 237-42 | "O"Ring | 2 |
| 21 | 22-8340 | Spring | 1 |
| 22 | 22-8350 | Ball | 1 |
| 23 | 22-8370 | Seat - Check Valve | 1 |
| 24 | 22-8360 | Pin - Cam | 1 |
| 25 | | Body | 1 |
| 26 | 55-3650 | Plug | 1 |
| * | 55-3630 | Adjustable Relief Valve (Incl. Ref. #9-17) | 1 |



T-0076

PARKING BRAKE & LIFT FRAME ASSEMBLY

| Ref. No. | Part No. | Description | No. Used | Ref. No. | Part No. | Description | No. Used |
|----------|----------|---------------------------------|----------|----------|----------|-----------------------------------|----------|
| 1 | 54-2120 | Link - Parking Brake | 1 | 23 | 283-55 | Pin - Clevis | 1 |
| 2 | 54-2110 | Lever - Brake | 1 | 24 | 3290-355 | Pin - Cotter | 1 |
| 3 | 233-37 | Knob | 1 | 25 | 323-10 | Screw | 1 |
| 4 | 3256-24 | Washer - Flat | 2 | 26 | 36-3220 | Pulley - Idler | 1 |
| 5 | 3272-10 | Pin - Cotter | 2 | 27 | 12-1109 | Lever - Idler (Incl. Ref. #43) | 1 |
| 6 | 27-9080 | Bushing | 4 | 28 | 3296-44 | Nut | 1 |
| 7 | 3296-29 | Nut | 6 | 29 | 61-3610 | Decal - Warning | 2 |
| 8 | 54-1270 | Bracket - Parking Brake | 1 | 30 | 54-1170 | Spring - Extension | 1 |
| 9 | 55-7120 | Switch - Brake | 1 | 31 | 27-6230 | Bolt - Shoulder | 1 |
| 10 | 32144-1 | Screw - Thread Forming | 2 | 32 | 256-154 | Bushing | 2 |
| 11 | 322-6 | Screw | 2 | 33 | 322-4 | Screw | 4 |
| 12 | 3220-6 | Nut - Jam | 2 | 34 | 55-7310 | Bracket - Idler | 1 |
| 13 | 54-2000 | Pin - Pivot | 1 | 35 | 3296-6 | Nut | 1 |
| 14 | 66-1570 | Frame - Lift (Incl. Ref. #6) | 1 | 36 | 321-2 | Screw | 2 |
| 15 | 32153-3 | Nut | 2 | 37 | 3253-3 | Washer | 2 |
| 16 | 353-431 | Fitting - 45° | 1 | 38 | 3256-1 | Washer | 2 |
| 17 | 237-78 | "O"Ring | 2 | 39 | 54-2100 | Pin - Pivot | 2 |
| 18 | 54-0150 | Cylinder - Lift | 1 | 40 | 56-6920 | Bracket - Cable Extension | 1 |
| 19 | 353-375 | Fitting - 90° | 1 | 41 | 3296-15 | Nut | 2 |
| 20 | 56-3320 | "T"Hook | 1 | 42 | 54-0960 | Spring - Parking Brake | 1 |
| 21 | 56-2760 | Spring - Extension | 2 | 43 | 55-4300 | Decal | 1 |
| 22 | 56-3370 | Bracket - Spring | 2 | | | | |

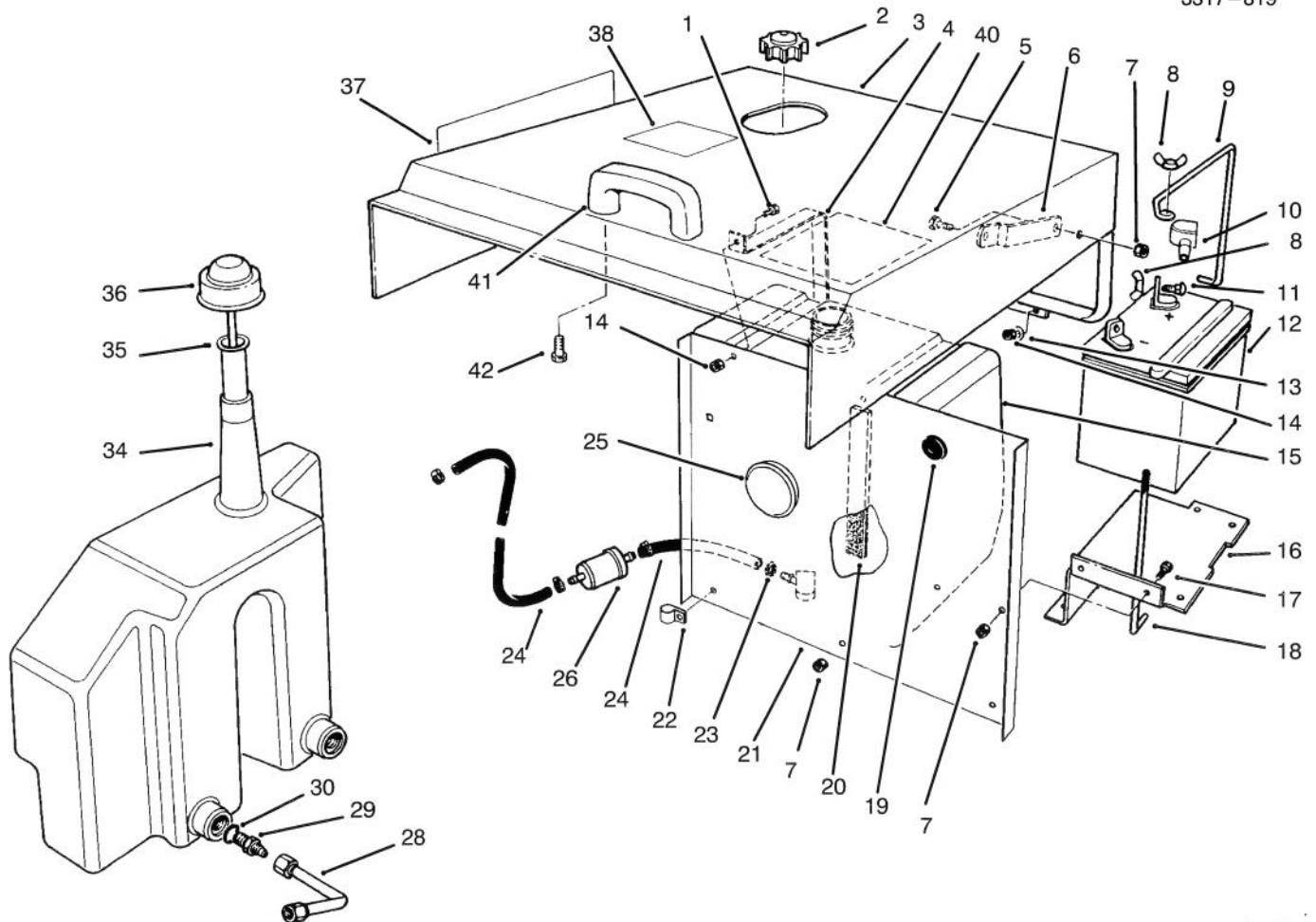


T-0077

HYDRAULIC LIFT CYLINDER NO. 54-0150

| Ref. No. | Part No. | Description | No. Used |
|----------|----------|-----------------|----------|
| 1† | | Barrel | 1 |
| 2 | 32152-10 | Nut - Lock | 1 |
| 3 | 54-0300 | Piston | 1 |
| 4 | | Uniring | 1 |
| 5 | | "O"Ring | 1 |
| 6 | 54-0310 | Head | 1 |
| 7 | | "O"Ring | 1 |
| 8 | | Washer - Backup | 1 |

| Ref. No. | Part No. | Description | No. Used |
|----------|----------|--|----------|
| 9 | | "O"Ring | 1 |
| 10 | | Washer - Backup | 1 |
| 11 | | Seal - Dust | 1 |
| 12 | 43-5220 | Ring - Retaining | 1 |
| 13 | 54-0280 | Shaft | 1 |
| * | 54-0290 | Seal Repair Kit (Incl. Ref. #4, 5 & 7-11) | 1 |

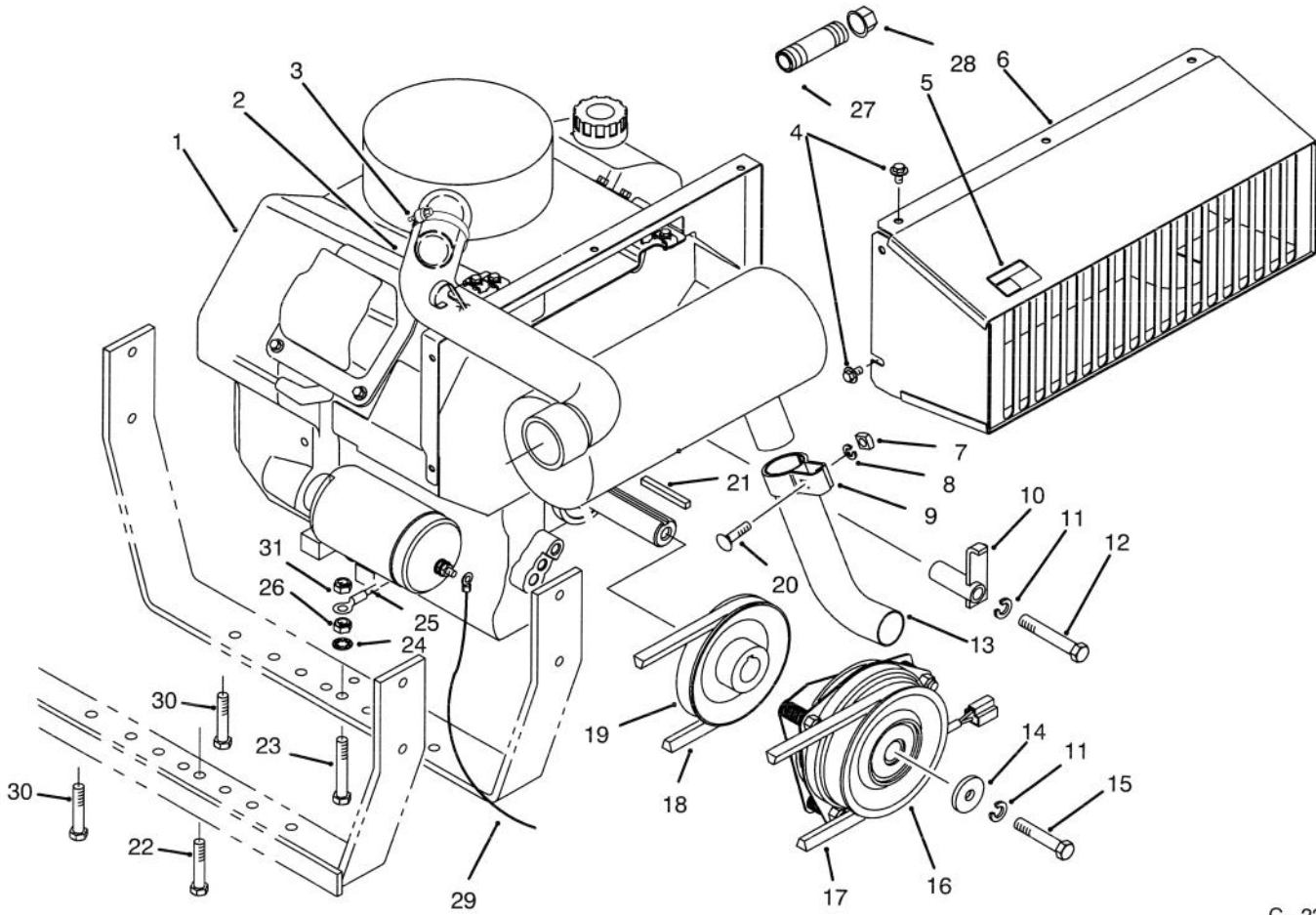


C-1630

HOOD, FUEL TANK & HYDRAULIC RESERVOIR ASSEMBLY

| Ref. No. | Part No. | Description | No. Used | Ref. No. | Part No. | Description | No. Used |
|----------|----------|-----------------------|----------|----------|----------|--|----------|
| 1 | 321-3 | Screw - Hex. Hd. | 2 | 21 | 92-6267 | Shield - Heat | 1 |
| 2 | 55-3570 | Cap - Fuel | 1 | 22 | 2412-100 | "R" Clamp | 1 |
| 3 | 14-4109 | Hood | 1 | 23 | 2412-108 | Clamp - Hose | 4 |
| 4 | 54-1880 | Strap - Fuel Tank | 2 | 24 | 92-6283 | Hose - Fuel | 2 |
| 5 | 322-3 | Screw - Hex. Hd. | 2 | 25 | 92-6274 | Plug - Cap | 1 |
| 6 | 54-1860 | Stop - Hood Upper | 2 | 26 | 38-8000 | Filter - Fuel | 1 |
| 7 | 3296-29 | Nut - Hex. | 9 | 28 | 54-2310 | Hydraulic Tube Assembly Transmission to Reservoir | 1 |
| 8 | 32103-22 | Nut - Wing | 3 | 29 | 353-385 | Fitting - Hydraulic Straight (Incl. Ref. #30) | 2 |
| 9 | 54-1260 | Clamp - Battery | 1 | 30 | 237-42 | "O" Ring | 2 |
| 10 | 77-0981 | Boot - Terminal | 1 | 34 | 54-2470 | Reservoir - Hydraulic | 1 |
| 11 | 3229-1 | Bolt - Carriage | 4 | 35 | 29-0590 | Screen | 1 |
| 12 | 82-4640 | Battery | 1 | 36 | 36-4950 | Cap - Oil | 1 |
| 13 | 3256-1 | Washer | 4 | 37 | 94-5410 | Decal - Groundsmaster 120 | 2 |
| 14 | 3296-42 | Nut - Lock | 8 | 38 | 92-6291 | Decal - Refueling | 1 |
| 15 | 62-4040 | Tank - Fuel | 1 | 40 | 92-6288 | Decal - Service | 1 |
| 16 | 54-1850 | Support - Battery | 1 | 41 | 65-5100 | Handle | 1 |
| 17 | 322-4 | Screw - Hex. Hd. | 2 | 42 | 46-8091 | Screw | 2 |
| 18 | 12-5950 | Rod - Battery Support | 1 | * | 68-7330 | Decal - Danger | 1 |
| 19 | 237-100 | Grommet | 1 | | | | |
| 20 | 54-1890 | Foam - Tank | 2 | | | | |

*Not Illustrated

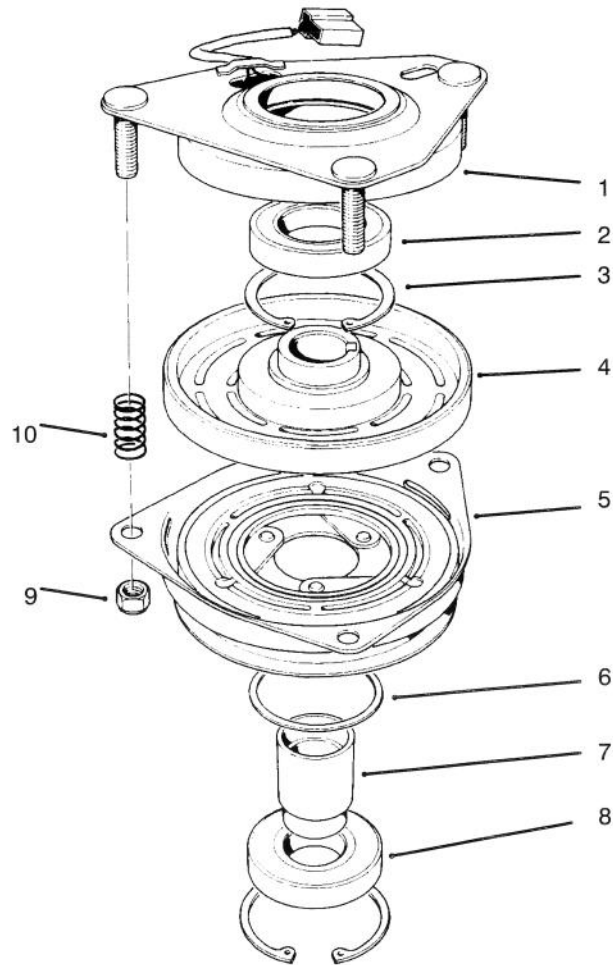


C-2344

ENGINE ASSEMBLY

| Ref. No. | Part No. | Description | No. Used |
|----------|----------|--|----------|
| 1 | | Engine – Kohler 20 HP Model CH20QS PS 64556 | 1 |
| 2 | 94-1296 | Hose – Carburetor | 1 |
| 3 | 2412-92 | Clamp – Hose | 2 |
| 4 | 48-7610 | Screw | 5 |
| 5 | 63-8440 | Decal – Hot Surface | 1 |
| 6 | 92-6260 | Duct – Engine | 1 |
| 7 | 3217-6 | Nut – Square | 1 |
| 8 | 3253-4 | Washer – Lock | 1 |
| 9 | 55-8660 | Assembly – Clamp (Incl. Ref. #7, 8 & 20) | 1 |
| 10 | 54-2160 | Bracket – Anchor | 1 |
| 11 | 3253-6 | Washer – Lock | 2 |
| 12 | 324-11 | Screw – Hex. Hd. | 1 |
| 13 | 54-2290 | Pipe – Exhaust | 1 |
| 14 | 44-8160 | Washer – Flat | 1 |
| 15 | 3212-24 | Screw – Hex. Hd. | 1 |

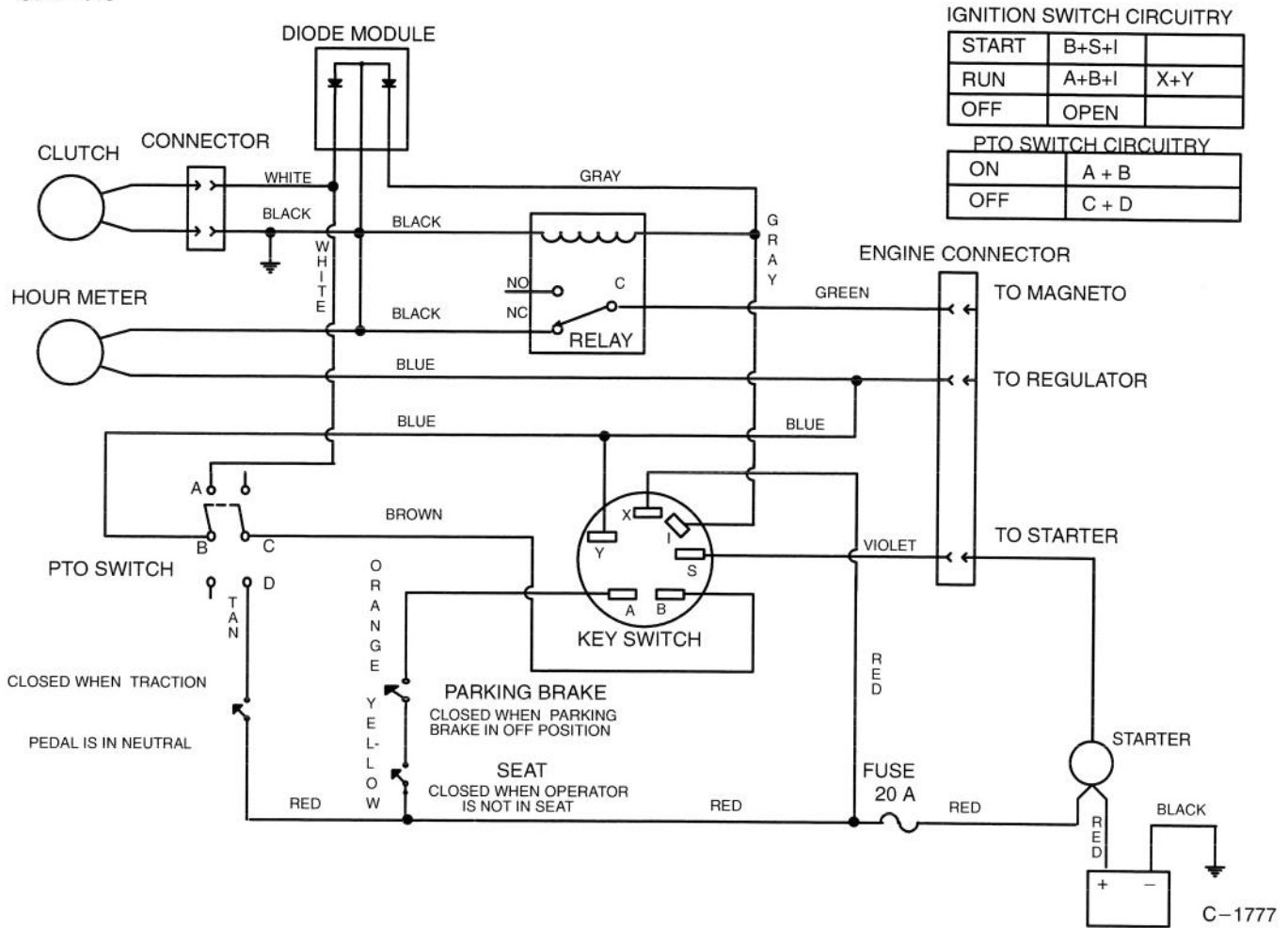
| Ref. No. | Part No. | Description | No. Used |
|----------|----------|---------------------------|----------|
| 16 | 54-0220 | Assembly – Clutch | 1 |
| 17 | 54-1380 | V-Belt | 1 |
| 18 | 54-1390 | V-Belt | 1 |
| 19 | 54-2330 | Pulley – Engine | 1 |
| 20 | 3230-3 | Bolt – Carriage | 1 |
| 21 | 5-0930 | Key | 1 |
| 22 | 323-10 | Screw – Hex. Hd. | 1 |
| 23 | 323-12 | Screw – Hex. Hd. | 1 |
| 24 | 3254-6 | Washer – Lock, Int. Tooth | 1 |
| 25 | 92-6287 | Wire – Ground | 1 |
| 26 | 3296-39 | Nut – Lock | 2 |
| 27 | 289-46 | Nipple – Pipe | 1 |
| 28 | 288-10 | Cap – Pipe | 1 |
| 29 | 28-3894 | Wire – –Positive | 1 |
| 30 | 323-9 | Screw | 2 |
| 31 | 3290-357 | Nut – Wizz | 1 |



T-0080

CLUTCH ASSEMBLY NO. 54-0220

| Ref. No. | Part No. | Description | No. Used | Ref. No. | Part No. | Description | No. Used |
|----------|----------|---|----------|----------|----------|------------------|----------|
| 1 | 54-0230 | Field Assembly (Incl. Ref. #2 & 3) | 1 | 6 | 44-8330 | Spacer - Bearing | 1 |
| 2 | 251-292 | Bearing - Field | 1 | 7 | 44-8340 | Collar - Bearing | 1 |
| 3 | 44-8310 | Ring - Retaining | 2 | 8 | 251-291 | Bearing - Pulley | 1 |
| 4 | 44-8360 | Field Coil, Rotor & Bearing (Incl. Ref. #1) | 1 | 9 | 3296-6 | Nut - Lock | 3 |
| 5 | 44-8370 | Armature & Pulley Assembly (Incl. Ref. #3, 6, 7 & 8) | 1 | 10 | 44-8320 | Spring | 3 |

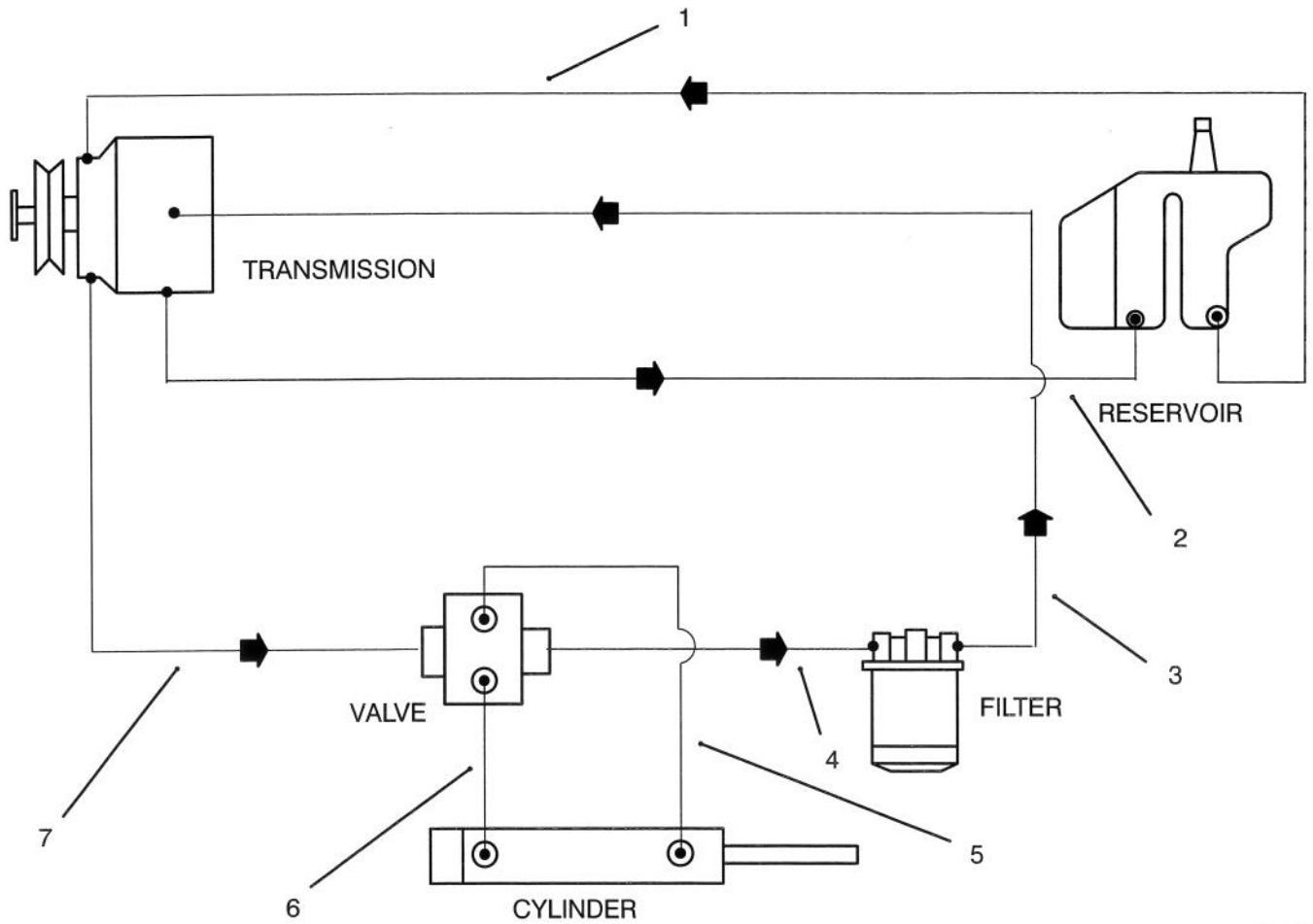


ELECTRIC SCHEMATIC

| Ref. No. | Part No. | Description | No. Used |
|----------|----------|----------------|----------|
| * | 92-6279 | Harness - Wire | 1 |
| * | 94-5849 | Diode | 1 |

| Ref. No. | Part No. | Description | No. Used |
|----------|----------|-------------|----------|
| | | | |
| | | | |
| | | | |

*Not Illustrated

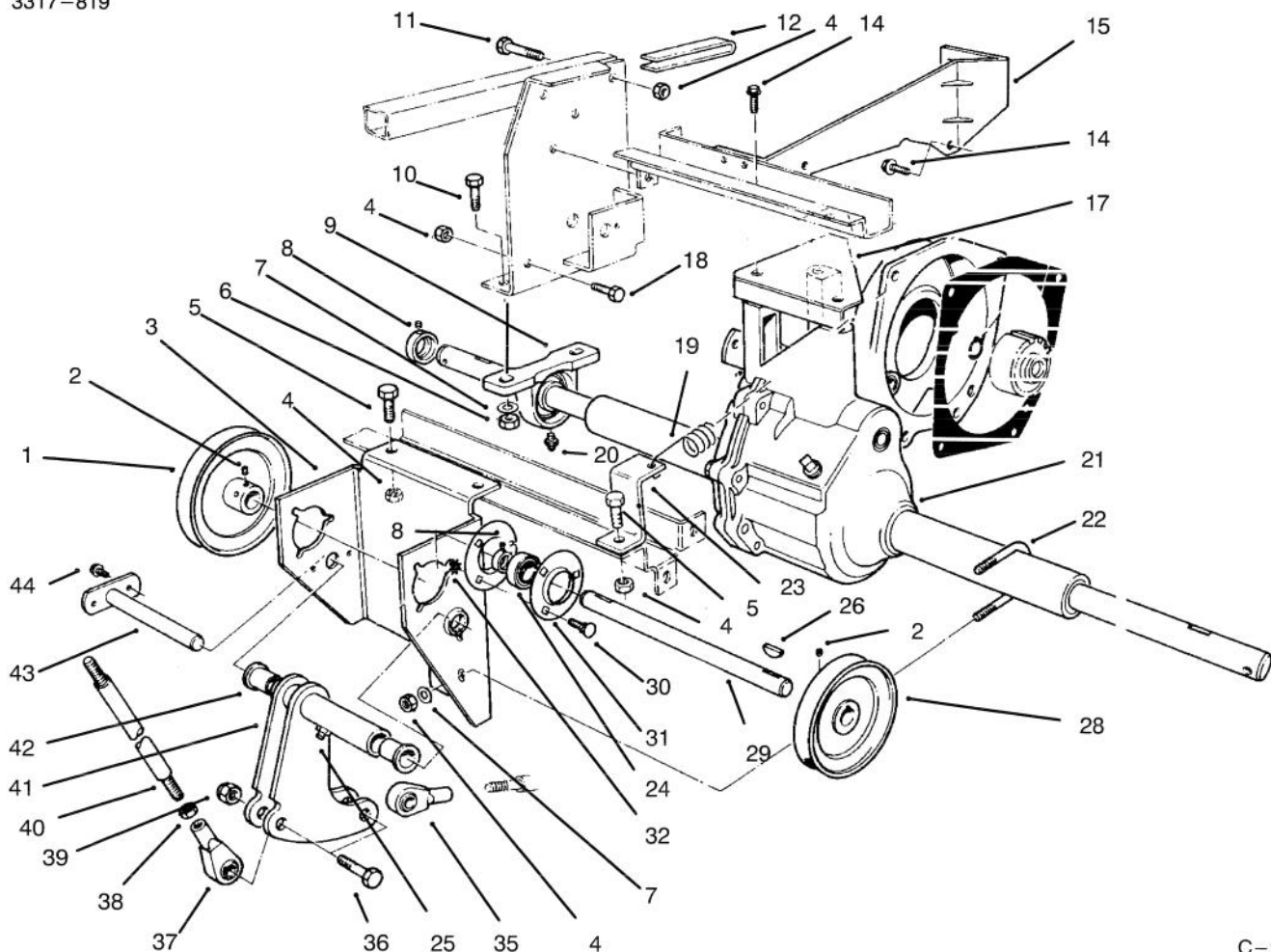


T-0084

HYDRAULIC SCHEMATIC

| Ref. No. | Part No. | Description | No. Used |
|----------|----------|--|----------|
| 1 | 56-3390 | Hydraulic Hose Assembly Reservoir to Transmission | 1 |
| 2 | 54-2310 | Hydraulic Tube Assembly | 1 |
| 3 | 54-2580 | Hydraulic Hose Assembly Filter to Transmission | 1 |
| 4 | 54-2570 | Hydraulic Hose Assembly Valve to Filter | 1 |

| Ref. No. | Part No. | Description | No. Used |
|----------|----------|--|----------|
| 5 | 54-2610 | Hydraulic Hose Assembly Cylinder to Valve | 1 |
| 6 | 54-2620 | Hydraulic Hose Assembly Cylinder to Valve | 1 |
| 7 | 54-2590 | Hydraulic Hose Assembly Transmission to Valve | 1 |



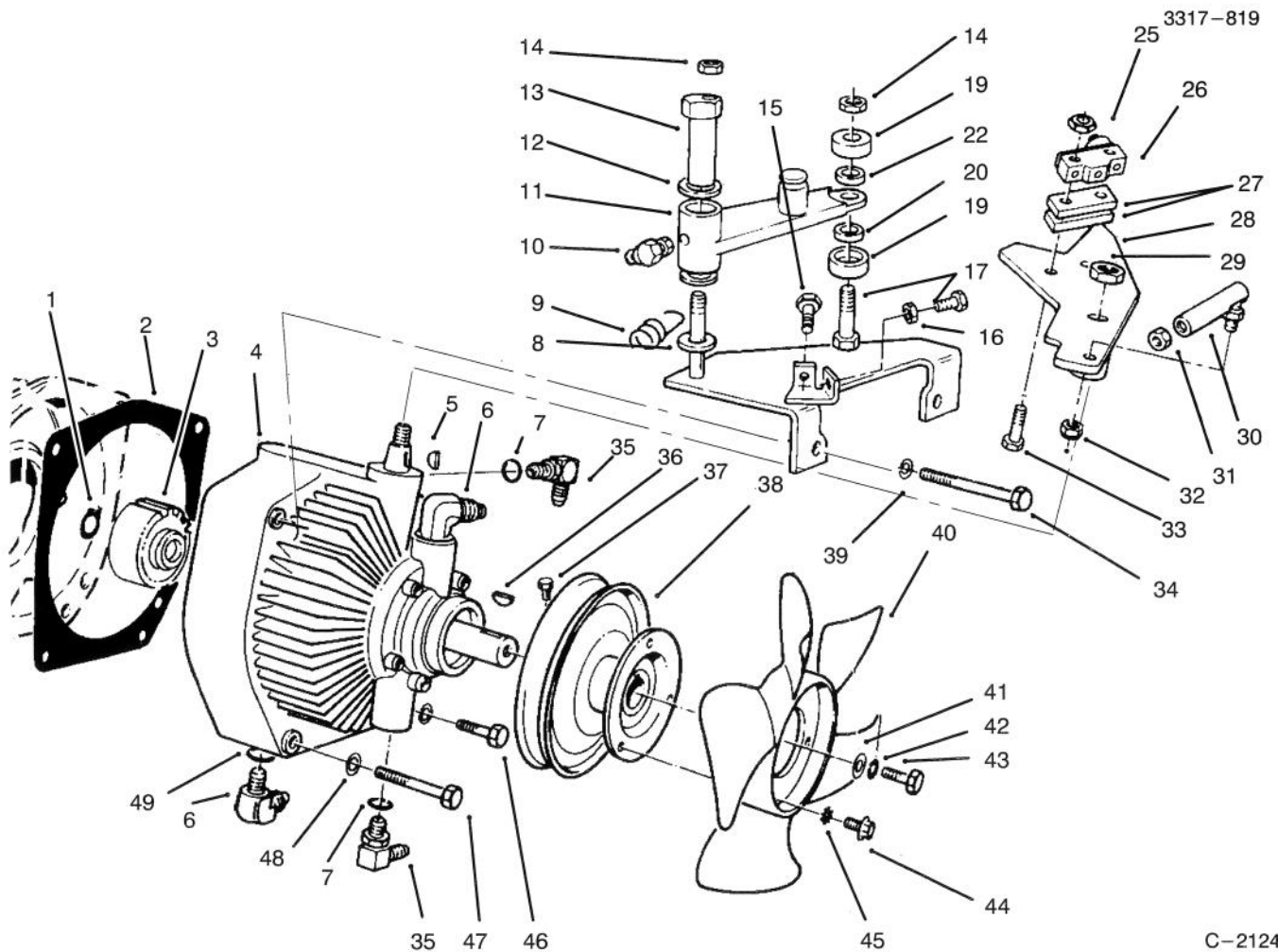
C-2123

DIFFERENTIAL ASSEMBLY

| Ref. No. | Part No. | Description | No. Used |
|----------|----------|-------------------------|----------|
| 1 | 54-2390 | Pulley - Output | 1 |
| 2 | 3241-1 | Screw - Set | 4 |
| 3 | 60-9130 | Bracket - Jackshaft | 1 |
| 4 | 3296-29 | Nut - Lock | A/R |
| 5 | 322-4 | Screw - Hex. Hd. | 6 |
| 6 | 3296-44 | Nut - Lock | 4 |
| 7 | 3256-3 | Washer - Flat | 6 |
| 8 | 3245-35 | Screw - Set | 4 |
| 9 | 72-4060 | Bearing Assembly | 2 |
| 10 | 323-8 | Screw - Hex. Hd. | 4 |
| 11 | 322-10 | Screw - Hex. Hd. | 4 |
| 12 | 80-3750 | Spacer | 2 |
| 14 | 3234-1 | Screw - Hex. Flange Hd. | 5 |
| 15 | 59-1620 | Bracket - Transaxle | 1 |
| 17 | 60-8990 | Plate - Transaxle | 1 |
| 18 | 322-4 | Screw - Hex. Hd. | 6 |
| 19 | 76-9430 | Spring - Extension | 1 |
| 20 | 302-2 | Fitting - Grease | 2 |
| 21 | 13-5969 | Differential Assembly | 1 |
| 22 | 54-8970 | "U" Bolt | 1 |

| Ref. No. | Part No. | Description | No. Used |
|----------|----------|---|----------|
| 23 | 92-6273 | Bracket - Spring | 1 |
| 24 | 251-288 | Bearing w/Collar | 2 |
| 25 | 302-49 | Fitting - Grease | 1 |
| 26 | 3257-5 | Key - Woodruff | 3 |
| 28 | 54-2380 | Pulley - Input | 1 |
| 29 | 54-1600 | Jackshaft | 1 |
| 30 | 3230-1 | Bolt - Carriage | 6 |
| 31 | 251-341 | Flange - Bearing | 4 |
| 32 | 32149-1 | Nut - Lock | 6 |
| 35 | 251-304 | Rod End | 1 |
| 36 | 324-7 | Screw - Hex. Hd. | 2 |
| 37 | 251-305 | Rod End | 1 |
| 38 | 3220-4 | Nut - Hex. Jam | 2 |
| 39 | 3296-48 | Nut - Lock | 2 |
| 40 | 54-1490 | Rod - Steering | 1 |
| 41 | 54-2060 | Bellcrank Assembly (Incl. Ref. #25 & 42) | 1 |
| 42 | 46-6680 | Bushing - Flanged | 2 |
| 43 | 59-1470 | Shaft - Bellcrank | 1 |
| 44 | 46-8560 | Screw - Thread Forming | 2 |

*Not Illustrated



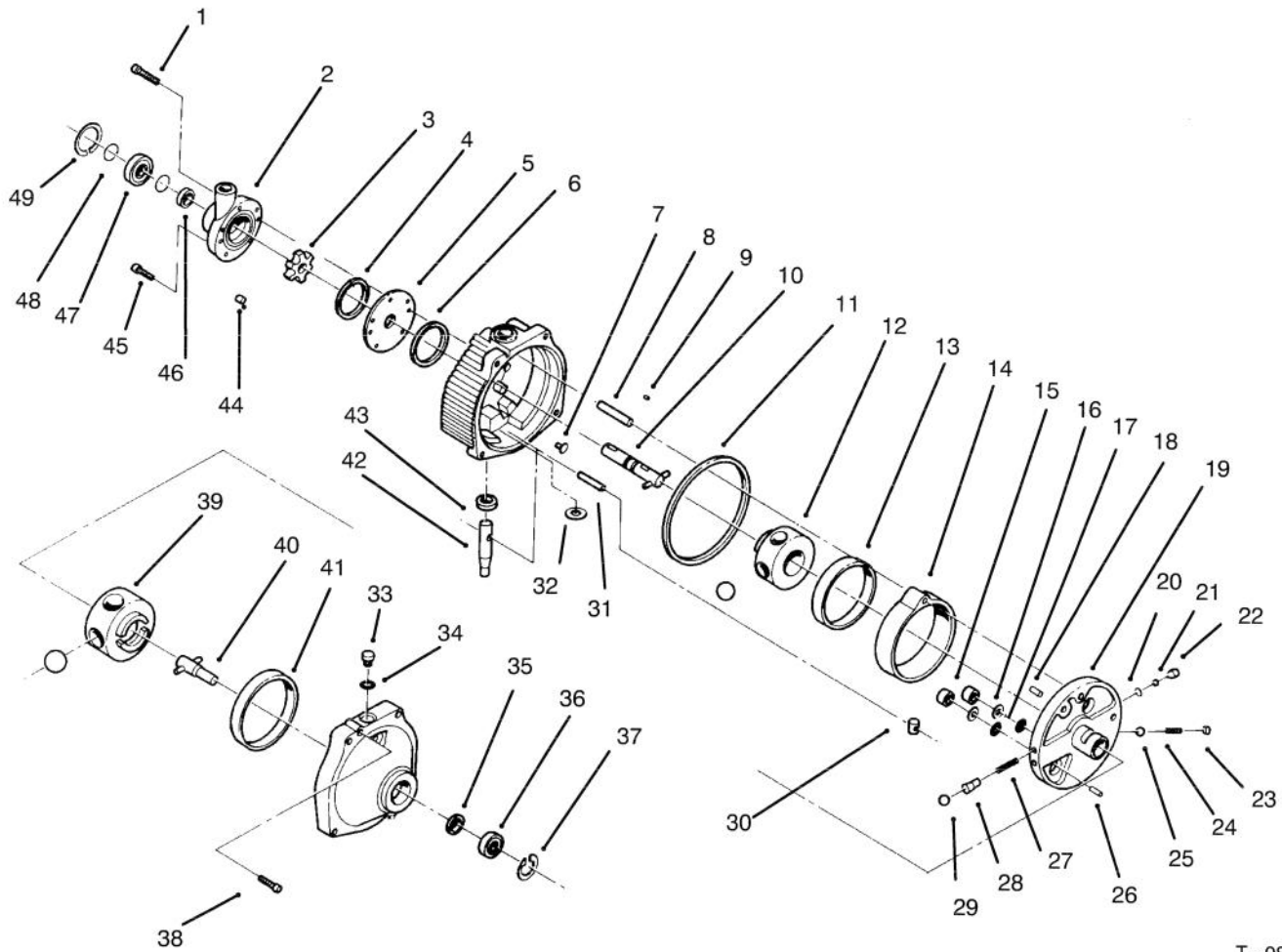
C-2124

TRANSMISSION ASSEMBLY

| Ref. No. | Part No. | Description | No. Used |
|----------|----------|--|----------|
| 1 | 32120-64 | Ring - Snap | 1 |
| 2 | 55-4320 | Gasket | |
| 3 | 54-0320 | Gear | 1 |
| 4 | 54-0080 | Transmission - Hydrostatic | 1 |
| 5 | 3257-24 | Key - Woodruff | 1 |
| 6 | 353-370 | Fitting - Hydraulic 90° (Incl. Ref. #49) | 2 |
| 7 | 237-79 | "O" Ring | 2 |
| 8 | 3256-68 | Washer | 2 |
| 9 | 76-9430 | Spring - Extension (Ref.) | |
| 10 | 302-60 | Fitting - Grease 90° | |
| 11 | 92-6289 | Swing Arm Assembly * (Incl. 256-113 Bushings (2)) | 1 |
| 12 | 3-6498 | Washer | 1 |
| 13 | 76-8640 | Stud - Traction | 1 |
| 14 | 3296-29 | Nut - Lock | A/R |
| 15 | 322-6 | Screw - Hex. Hd. | 2 |
| 16 | 3217-6 | Nut | 4 |
| 17 | 322-7 | Screw - Hex. Hd. | 1 |
| 19 | 251-307 | Bearing | 2 |
| 20 | 92-6290 | Spacer | 1 |
| 22 | 75-5470 | Spacer Bearing | 1 |
| 25 | 3296-9 | Nut | 2 |
| 26 | 29-6163 | Switch | 1 |

| Ref. No. | Part No. | Description | No. Used |
|----------|----------|--|----------|
| 27 | 75-4130 | Spacer | 2 |
| 28 | 92-6269 | Lever - Traction | 2 |
| 29 | 3296-25 | Nut | 1 |
| 30 | 2411-34 | Joint - Ball | 1 |
| 31 | 3220-1 | Nut - Hex. Jam | 1 |
| 32 | 3296-3 | Nut - Lock | 1 |
| 33 | 3250-46 | Screw | 2 |
| 34 | 323-14 | Screw - Hex. Hd. | 1 |
| 35 | 353-511 | Fitting - Hydraulic 90° (Incl. Ref. #7) | 2 |
| 36 | 3257-5 | Key - Woodruff | 3 |
| 37 | 3241-2 | Screw - Set | 2 |
| 38 | 54-0930 | Pulley - Transmission | 1 |
| 39 | 3253-5 | Washer - Lock | 4 |
| 40 | 54-0240 | Fan | 1 |
| 41 | 3256-55 | Washer | 1 |
| 42 | 3253-3 | Washer - Lock | 1 |
| 43 | 321-2 | Screw - Hex. Hd. | 1 |
| 44 | 32144-19 | Screw - Round Hd. | 3 |
| 45 | 3255-5 | Washer - Lock | 3 |
| 46 | 323-13 | Screw - Hex. Hd. | 1 |
| 47 | 323-16 | Screw - Hex. Hd. | 1 |
| 48 | 3253-5 | Washer - Lock | 4 |
| 49 | 237-80 | "O" Ring | 2 |

*Not Illustrated

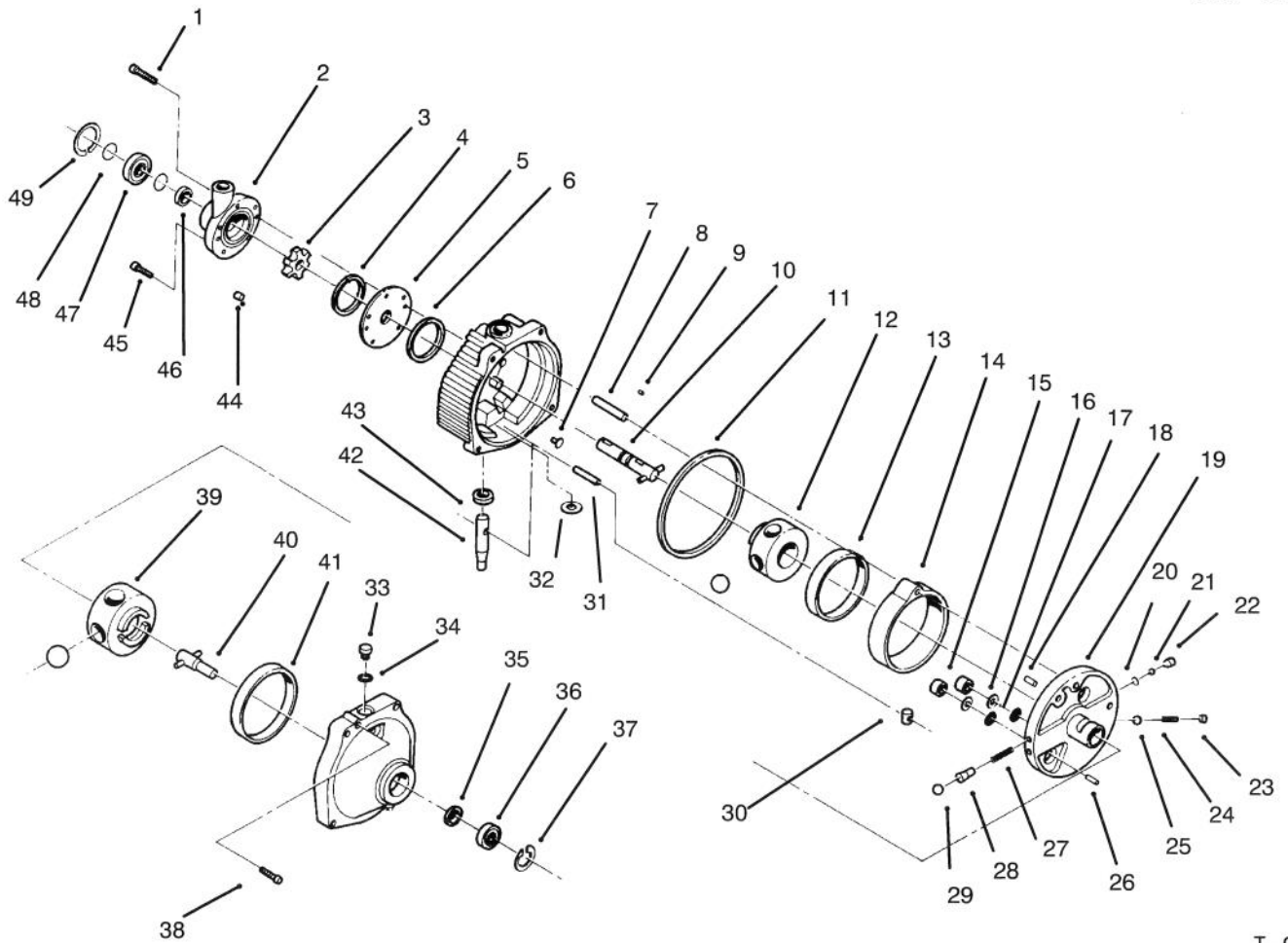


T-0883

HYDROSTATIC TRANSMISSION ASSEMBLY

| Ref. No. | Part No. | Description | No. Used |
|----------|----------|---|----------|
| 1 | 56-2800 | Screw - Hex. Socket Hd. | 1 |
| 2 | 56-2830 | Charge Pump Assembly (Incl. Ref. #1) | 1 |
| 3 | 56-3120 | Carrier | 1 |
| 4 | 56-2850 | Ring - Seal | 1 |
| 5 | 56-2860 | Plate - Pump | 1 |
| 6 | 56-2870 | Ring - Seal | 1 |
| 7 | 56-2880 | Button | 2 |
| 8 | 56-2890 | Pin - Dowel | 1 |
| 9 | 56-2900 | Pin - Drive | 1 |
| 10 | 56-2910 | Input Shaft Assembly | 1 |
| 11 | 56-2920 | Ring - Seal | 1 |
| 12 | 56-2930 | Pump Rotor & Ball Assembly | 1 |
| 13 | | Race - Pump | 1 |
| 14 | 56-2940 | Cam Ring Assembly (Incl. Ref. #13) | 1 |
| 15 | 56-2950 | Piston | 2 |
| 16 | 56-2960 | Ring - Backup | 2 |

| Ref. No. | Part No. | Description | No. Used |
|----------|----------|--|----------|
| 17 | 56-2970 | "O"Ring | 2 |
| 18 | 56-2980 | Pin - Coil | 1 |
| 19 | 56-2990 | Pintle Assembly (Incl. Ref. #15-18, 20, 22-26 & 27-29) | 1 |
| 20 | 56-3000 | Ring - Retaining | 2 |
| 21 | 56-3010 | Ball | 2 |
| 22 | 56-3020 | Body - Check Valve | 2 |
| 23 | 56-3050 | Plug - Relief Valve | 1 |
| 24 | 56-3040 | Spring - Relief Valve | 1 |
| 25 | 56-3030 | Ball | 1 |
| 26 | 56-3060 | Pin - Dowel | 1 |
| 27 | 56-3180 | Spring - Valve | 2 |
| 28 | 56-3200 | Body - Valve | 2 |
| 29 | 56-3210 | Ball | 2 |
| 30 | 56-3170 | Insert - Cam Ring | 1 |
| 31 | | Dowel | 1 |
| 32 | | Washer - Control Shaft | 1 |



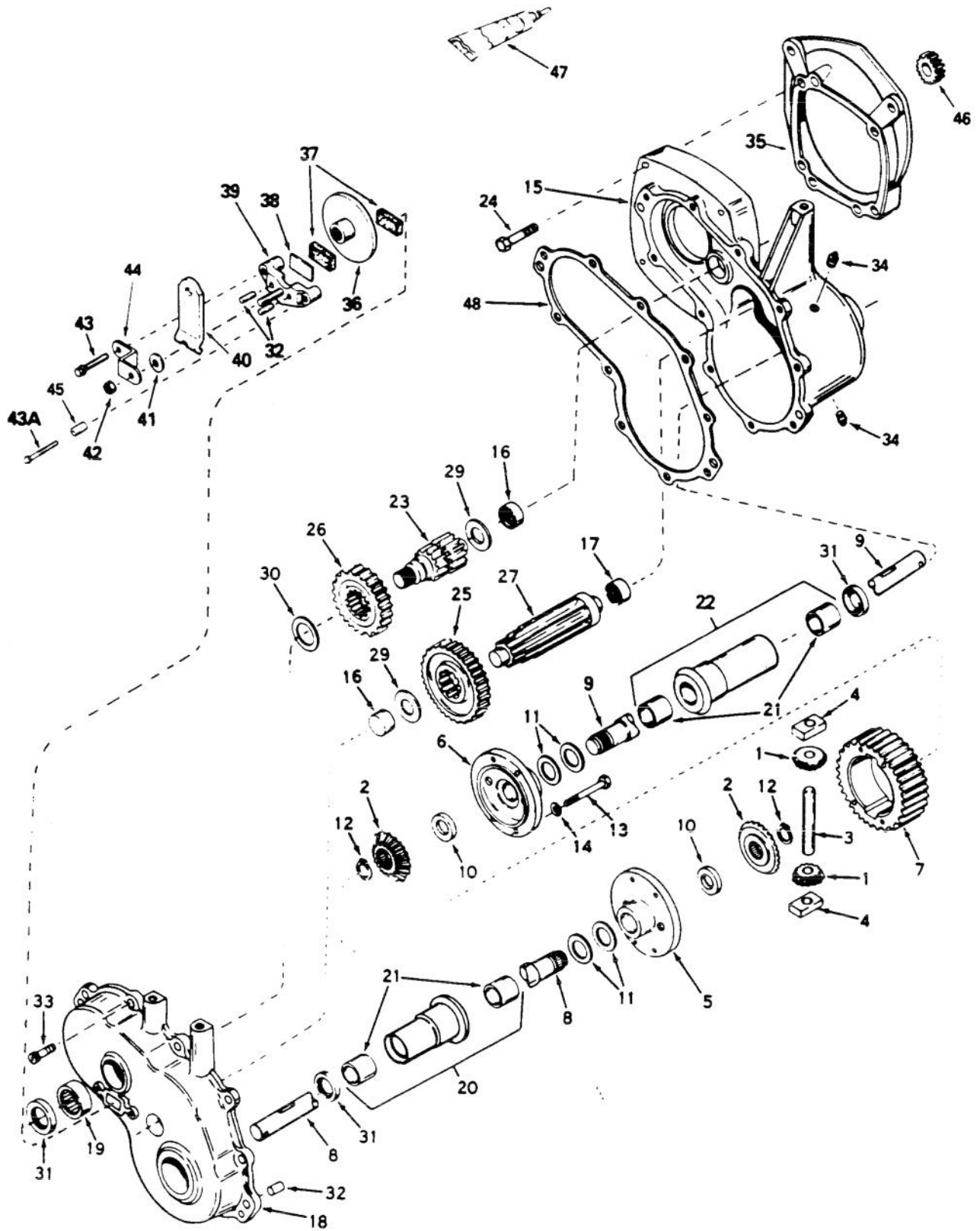
T-0083

HYDROSTATIC TRANSMISSION ASSEMBLY (Continued)

| Ref. No. | Part No. | Description | No. Used |
|----------|----------|-----------------------------------|----------|
| 33 | 56-3250 | Plug Assembly (Incl. Ref. #34) | 1 |
| 34 | 56-3260 | "O"Ring | 1 |
| 35 | 56-3270 | Seal - Oil | 1 |
| 36 | 56-3280 | Bearing - Output | 1 |
| 37 | 56-3290 | Ring - Retaining | 1 |
| 38 | 56-3300 | Screw - Hex. Socket Hd. | 2 |
| 39 | 56-3220 | Motor Rotor & Ball Assembly | 1 |
| 40 | 56-3230 | Output Shaft Assembly | 1 |
| 41 | 56-3240 | Race - Motor | 1 |
| 42 | 56-3140 | Control Shaft Kit | |

| Ref. No. | Part No. | Description | No. Used |
|----------|----------|---|----------|
| | | (Incl. Ref. #31 & 32) | 1 |
| 43 | 56-3130 | Seal - Oil | 1 |
| 44 | 56-3110 | Pin - Roll | 6 |
| 45 | 56-3100 | Screw - Hex. Socket Hd. | 4 |
| 46 | 56-2820 | Seal - Oil | 1 |
| 47 | 56-2810 | Bearing - Input | 1 |
| 48 | 56-3090 | Ring - Retaining | 2 |
| 49 | 56-3080 | Ring - Retaining | 1 |
| * | 56-3310 | Kit - Overhaul Seal (Incl. Ref. #4, 6, 11, 16, 17, 34, 35, 43 & 46) | 1 |

DIFFERENTIAL ASSEMBLY NO. 1310-001A

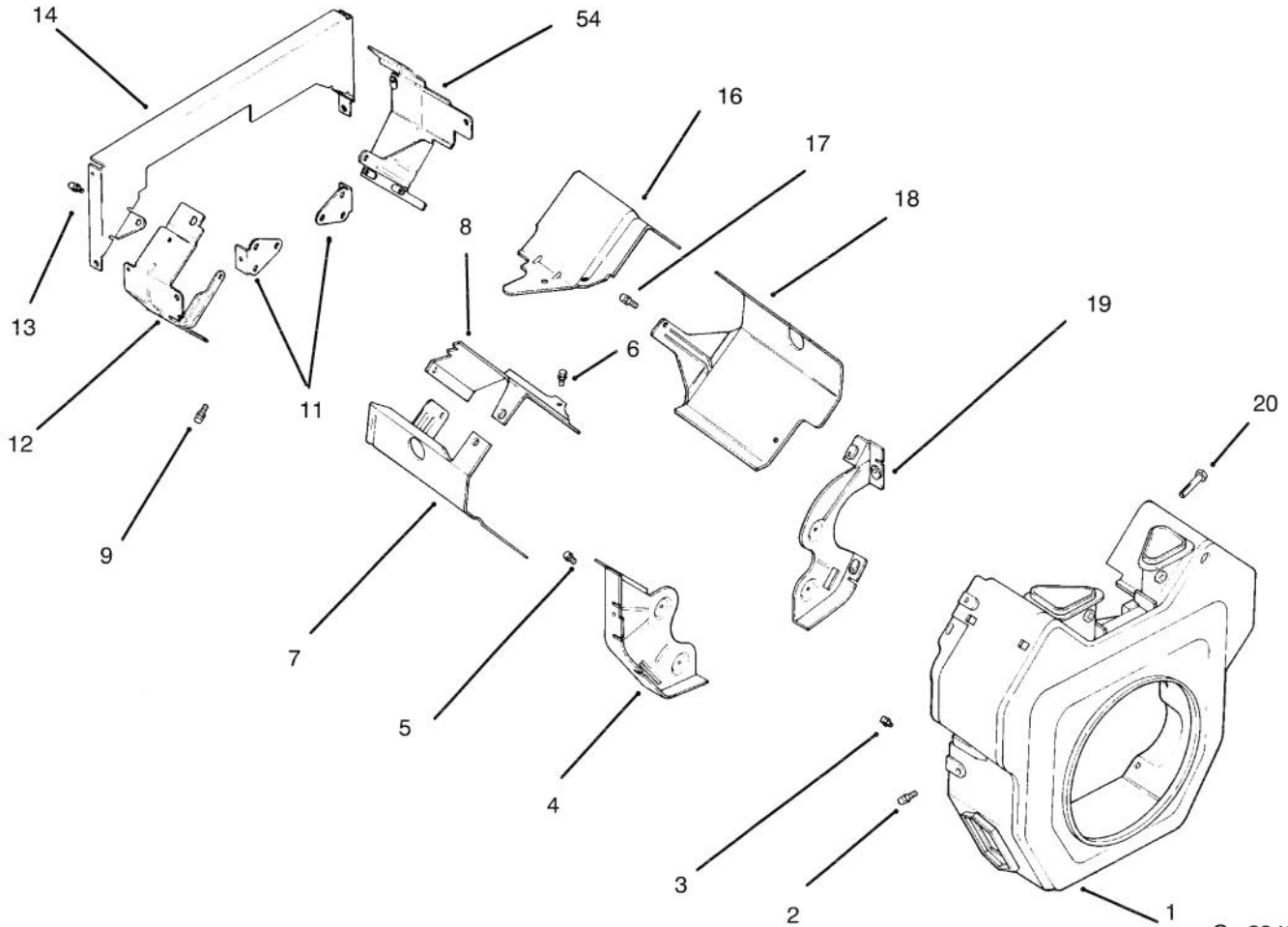


DIFFERENTIAL ASSEMBLY NO. 1310-001A

| Ref. No. | Part No. | Description | No. Used |
|----------|----------|---|----------|
| 1 | 778197 | Pinion - Bevel | 1 |
| 2 | 778198 | Gear - Bevel | 1 |
| 3 | 786019 | Pin - Drive | 1 |
| 4 | 786027 | Block - Drive | 1 |
| 5 | 774028A | Carrier - Differential | 1 |
| 6 | 774029A | Carrier - Differential | 1 |
| 7 | 778033A | Gear - Ring | 1 |
| 8 | 774607 | Axle - 16-5/8" | 1 |
| 9 | 774608 | Axle - 21-57/64" | 1 |
| 10 | 780107 | Washer | 1 |
| 11 | 780042 | Washer - Thrust | 1 |
| 12 | 792018 | Ring - Snap | 1 |
| 13 | 792020 | Screw - Hex. Hd. | 1 |
| 14 | 792006 | Washer - Lock | 1 |
| 15 | 770080 | Case Assembly (Incl. Ref. #16 & 17) | 1 |
| 16 | 780013 | Bearing - Needle | 1 |
| 17 | 780088 | Bearing - Needle | 1 |
| 18 | 772085 | Cover Assembly (Incl. Ref. #16 & 19) | 1 |
| 19 | 780089 | Bearing 0 Needle | 1 |
| 20 | 782041A | Housing Assembly - 6-5/8" (Incl. Ref. #21) | 1 |
| 21 | 780054 | Bushing | 1 |
| 22 | 782042A | Housing Assembly - 8-5/8" (Incl. Ref. #21) | 1 |

| Ref. No. | Part No. | Description | No. Used |
|----------|----------|------------------------|----------|
| 23 | 776245 | Shaft - Brake | 1 |
| 24 | 79-2120 | Screw - Hex. Hd. | 1 |
| 25 | 778036 | Gear - Output | 1 |
| 26 | 778037 | Gear - Idler | 1 |
| 27 | 776244 | Shaft - Output | 1 |
| 29 | 780001 | Washer | 1 |
| 30 | 780090 | Washer | 1 |
| 31 | 788008 | Seal - Oil | 1 |
| 32 | 786026 | Pin - Dowel | 1 |
| 33 | 792046 | Screw - Thread Forming | 1 |
| 34 | 792010 | Plug - Pipe | 1 |
| 35 | 786112 | Plate - Adapter | 1 |
| 36 | 790027 | Disc - Brake | 1 |
| 37 | 790006 | Pad - Brake | 1 |
| 38 | 790007 | Plate - Brake Pad | 1 |
| 39 | 790025 | Holder - Brake Pad | 1 |
| 40 | 790010 | Lever - Brake | 1 |
| 41 | 792076 | Washer - Flat | 1 |
| 42 | 792075 | Nut - Lock | 1 |
| 43 | 792073 | Screw - Thread Forming | 1 |
| 43A | 792085 | Screw - Thread Forming | 1 |
| 44 | 786086 | Bracket | 1 |
| 45 | 786066 | Spacer | 1 |
| 46 | 778194 | Gear - Spur 22T | 1 |
| 47 | 510334 | Gasket Eliminator | 1 |
| 48 | 788044 | Gasket | 1 |

3317-819

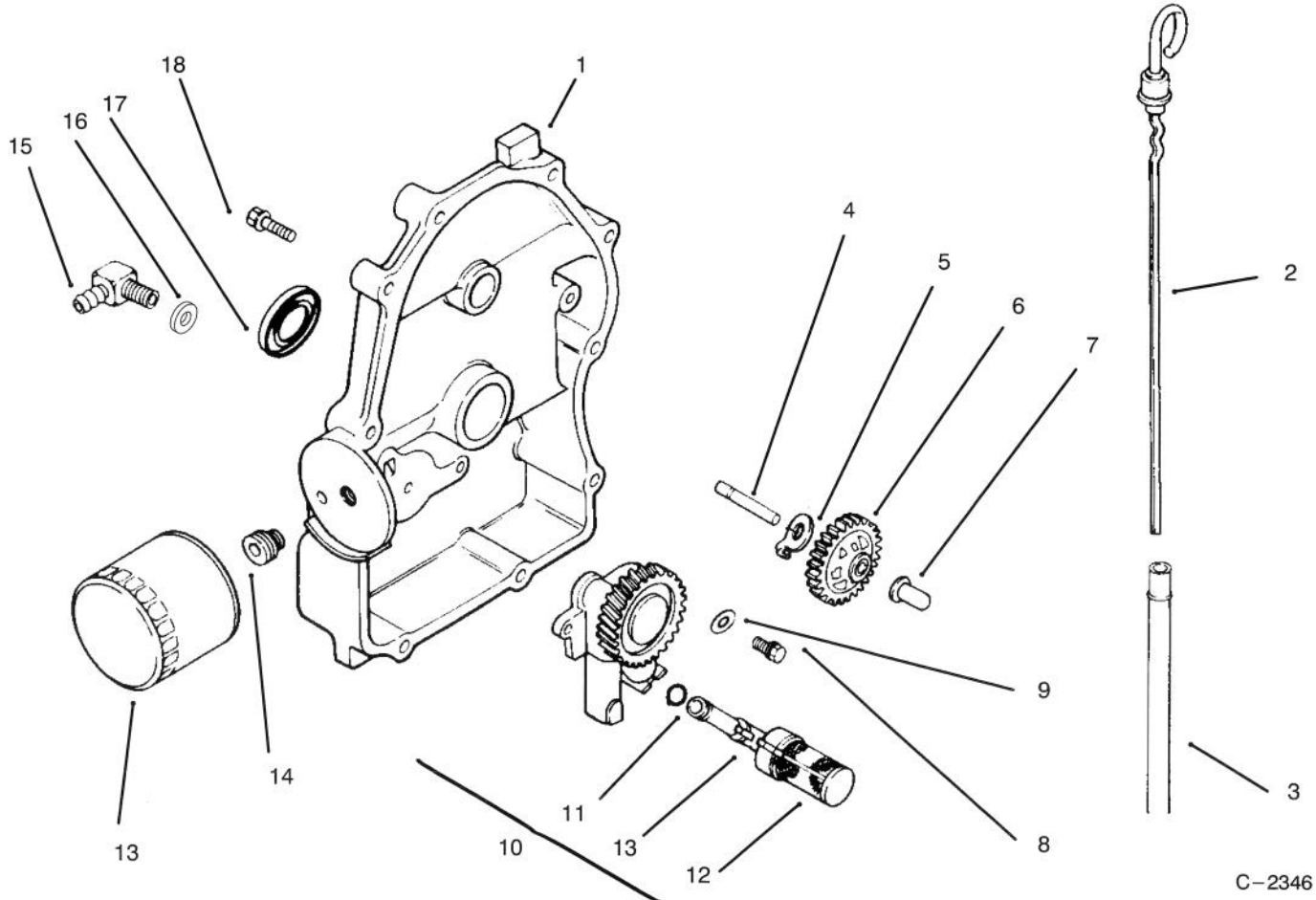


C-2345

BAFFLES & SHROUD

| Ref. No. | Part No. | Description | No. Used |
|----------|------------|-------------------------------------|----------|
| 1 | 24 027 21 | Housing – Blower | 1 |
| 2 | SM-0545016 | Screw | 5 |
| 3 | M-0551016 | Screw | 1 |
| 4 | 24 146 02 | Plate – Backing #2 side | 1 |
| 5 | M-0645016 | Screw | 4 |
| 6 | M-0645016 | Screw | 2 |
| 7 | 24 063 20 | Baffle – Cylinder Barrel # 2 side | 1 |
| 8 | 24 063 17 | Baffle – Valley #2 side | 1 |
| 9 | M-0545010 | Screw | 2 |
| *10 | 24 755 14 | Kit – "Q" Duct (Incl. Ref. # 11-15) | 1 |
| 11 | 24 126 04 | Bracket – Support | 2 |

| Ref. No. | Part No. | Description | No. Used |
|----------|------------|-----------------------------------|----------|
| 12 | 24 063 12 | Baffle, – Ducted Air # 1 side | 1 |
| 13 | M-0639010 | Screw | 8 |
| 14 | 24 146 04 | Plat – Ducted Air Backing | 1 |
| 15 | 24 063 13 | Baffle – Ducted air # 1 side | 1 |
| 16 | 24 063 24 | Baffle, Valley 1 side | 1 |
| 17 | SM-0545016 | Screw | 2 |
| 18 | 24 063 08 | Baffle – Cylinder Barrel # 1 side | 1 |
| 19 | 24 146 08 | Plate – Backing #1 side | 1 |
| 20 | M-0545020 | Screw | 2 |



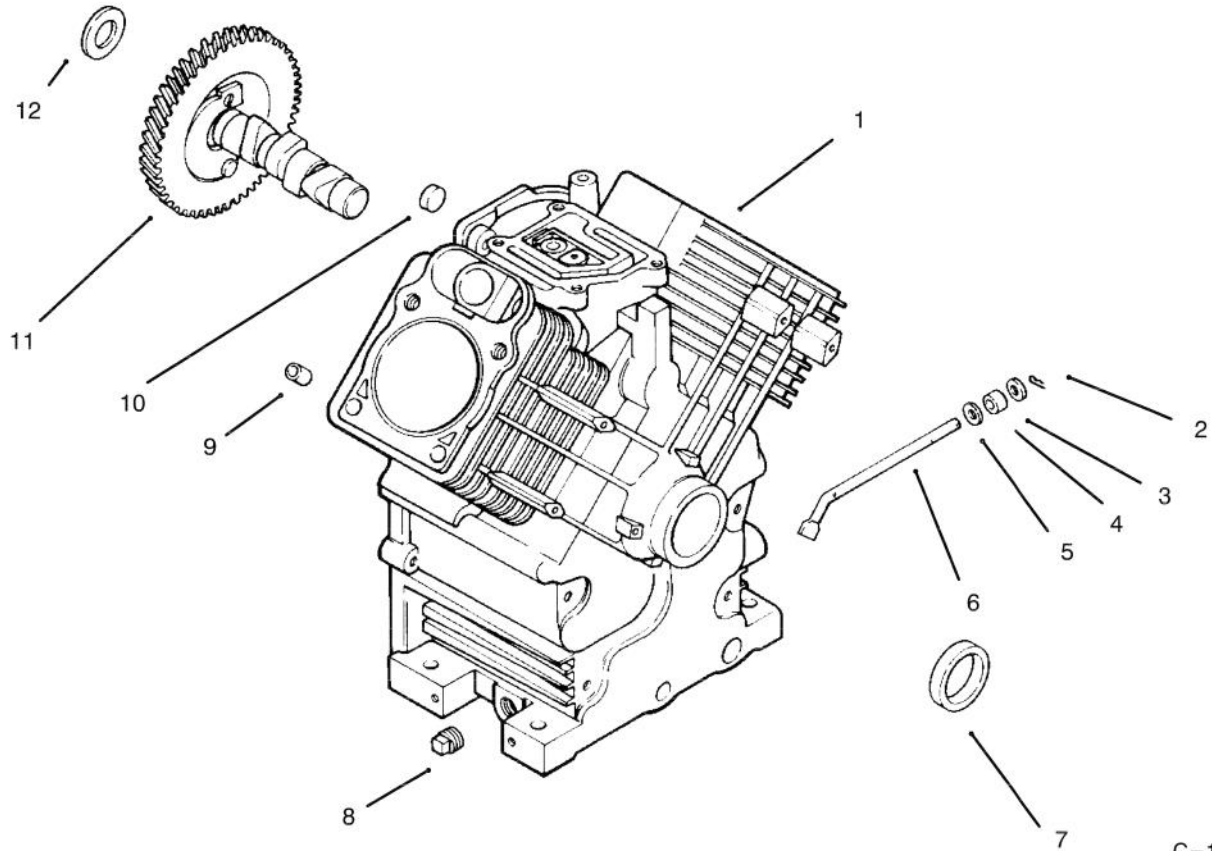
C-2346

OIL PAN/LUBRICATION

| Ref. No. | Part No. | Description | No. Used |
|----------|-----------|--|----------|
| 1 | 24 009 83 | Plate - Closure (Incl. Ref. # 2-7, 10-12, 16 & !7) | 1 |
| 2 | 24 038 01 | Dipstick | 1 |
| 3 | 24 123 04 | Tube - Dipstick | 1 |
| 4 | 12 144 02 | Shaft - Governor Gear | 1 |
| 5 | 52 448 02 | Tab - Locking | 1 |
| 6 | 24 043 12 | Kit - Governor Gear Asm (Incl. Ref. # 7) | 1 |
| 7 | 12 380 01 | Pin - Governor Regulating | 1 |
| 8 | M-0645025 | Screw | 2 |
| 9 | M-0631005 | Washer - Flat | 2 |

| Ref. No. | Part No. | Description | No. Used |
|----------|-----------|--|----------|
| 10 | 24 393 03 | Oil Pump Assembly (Incl. Ref. # 11-12) | 1 |
| 11 | 24 153 01 | "O"Ring | 1 |
| 12 | 24 381 01 | Pick-up, Oil | 1 |
| 13 | 12 050 01 | Filter - Oil | 1 |
| 14 | 24 136 01 | Adapter - Oil Filter | 1 |
| 15 | 25 155 02 | Connector, 90° Hose | 1 |
| 16 | 24 153 08 | "O"Ring | 1 |
| 17 | 52 032 08 | Seal - Oil (PTO End) | 1 |
| 18 | 24 086 16 | Screw | 10 |

*Not Illustrated



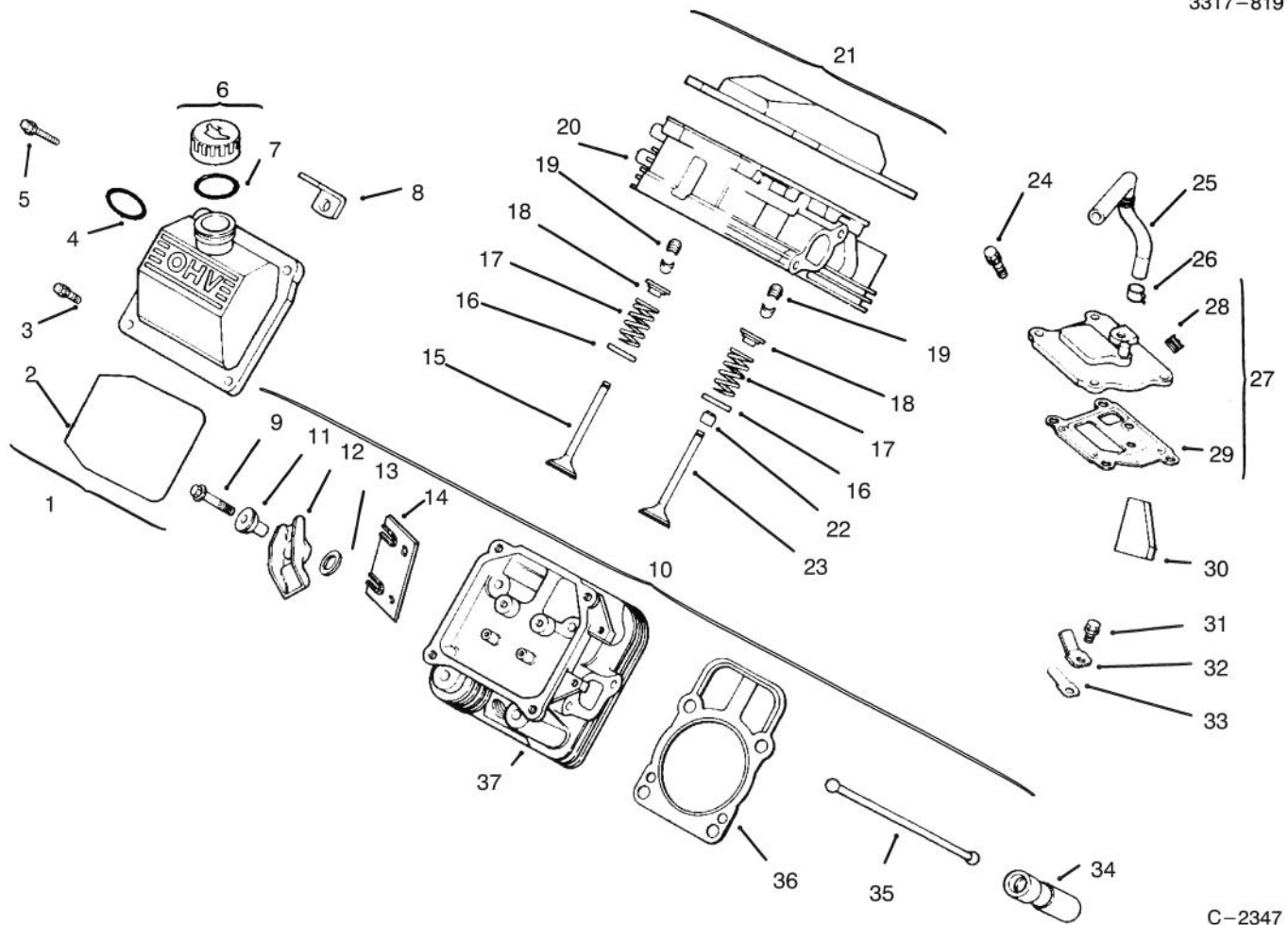
C-1611

CRANKCASE

| Ref. No. | Part No. | Description | No. Used |
|----------|-----------|---|----------|
| 1 | | Cylinder block (Use Miniblock 24 782 01) | 1 |
| 2 | 12 380 04 | Pin - Hitch | 1 |
| 3 | X-25-102 | Washer - Plain | 1 |
| 4 | 12 032 01 | Seal - Governor Cross Shaft | 1 |
| 5 | X-25-63 | Washer | 1 |
| 6 | 24 144 01 | Shaft - Governor Cross | 1 |
| 7 | 24 032 01 | Seal - Oil | 1 |
| 8 | X-75-10 | Plug, Sq. Hd. | 2 |
| 9 | 12 380 03 | Pin - Dowel | 6 |
| 10 | 52 139 09 | Plug - Cup | 1 |

| Ref. No. | Part No. | Description | No. Used |
|----------|-----------|-------------------------|----------|
| 11 | 24 012 05 | Camshaft | 1 |
| 12 | 12 422 09 | Shim - Camshaft, Green | A/R |
| * | 12 422 13 | Shim - Camshaft, Black | A/R |
| * | 12 422 07 | Shim - Camshaft, White | A/R |
| * | 12 422 08 | Shim - Camshaft, Blue | A/R |
| * | 12 422 10 | Shim - Camshaft, Yellow | A/R |
| * | 12 422 11 | Shim - Camshaft, Red | A/R |
| * | 12 422 12 | Shim - Camshaft, Gray | A/R |
| * | 24 782 01 | Short Block | 1 |
| * | 24 755 03 | Set - Gasket | 1 |

*Not Illustrated

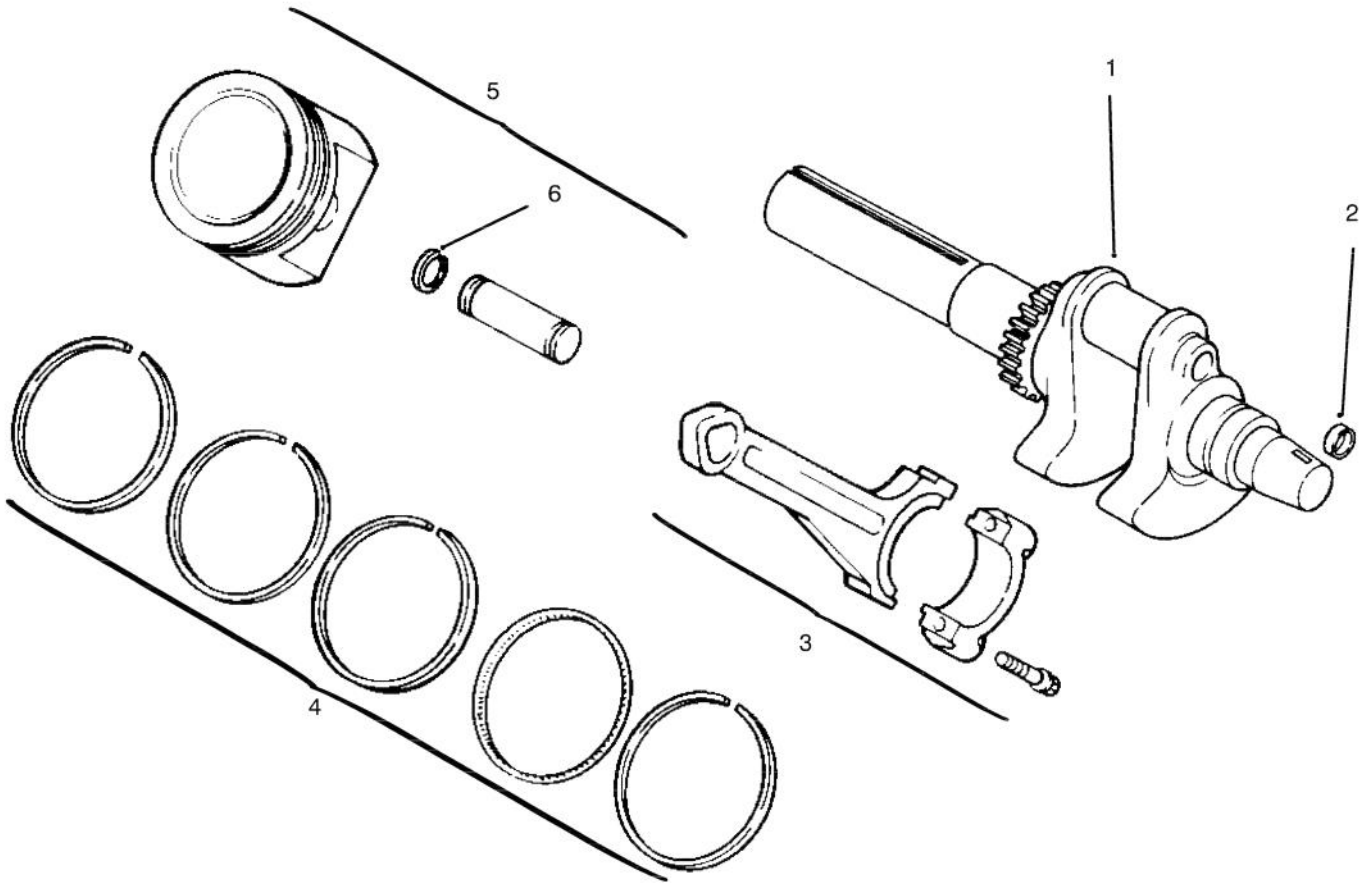


C-2347

CYLINDER HEAD, VALVE & BREATHER

| Ref. No. | Part No. | Description | No. Used |
|----------|-----------|--|----------|
| 1 | 24 755 75 | Kit - Valve Cover (Incl. Ref. #2-4) | 1 |
| 2 | 24 153 12 | "O"Ring | 1 |
| 3 | 24 086 32 | Screw - Shoulder | 4 |
| 4 | 24 153 09 | "O"Ring | 1 |
| 5 | 12 086 16 | Screw | 8 |
| 6 | 25 755 13 | Kit - Oil Fill Cap (Incl. Ref. #7) | 1 |
| 7 | 12 153 03 | "O"Ring | 1 |
| 8 | 24 445 01 | Strap - Lifting | 1 |
| 9 | M-0640034 | Screw | 4 |
| 10 | 24 755 61 | Kit - Valve Train (Incl. Ref. # 11-14 & 35) | 1 |
| 11 | 24 194 02 | Pivot - Rocker Arm | 4 |
| 12 | 24 186 03 | Arm - Rocker | 4 |
| 13 | M-0631005 | Washer - Plain | 4 |
| 14 | 24 146 09 | Plate - Guide | 2 |
| 15 | 24 016 01 | Valve - Exhaust (Std.) | 2 |
| * | 24 016 02 | Valve - Exhaust (.25) | 2 |
| 16 | 235011 | Retainer - Spring | 4 |
| 17 | 24 089 02 | Spring - Valve | 4 |
| 18 | 12 173 01 | Cap - Valve Spring | 4 |
| 19 | 12 755 03 | Kit - Retainer | 4 |

| Ref. No. | Part No. | Description | No. Used |
|----------|-----------|---|----------|
| 20 | 24 318 09 | Head Assembly (# 1 Cylinder) | 1 |
| 21 | 24 755 74 | Kit - Valve Cover (Incl. Ref. # 2 & 3) | 1 |
| 22 | 24 032 05 | Seal - Valve Stem | 2 |
| 23 | 24 017 01 | Valve - Intake (Std.) | 2 |
| * | 24 017 02 | Valve - Intake (.25) | 2 |
| 24 | M-0645020 | Screw | 4 |
| 25 | 24 326 06 | Hose - Breather | 1 |
| 26 | X-426-9 | Clamp - Breather | 1 |
| 27 | 24 033 01 | Kit - Breather w/Plug (Incl. Ref. # 28 & 29) | 1 |
| 28 | X-75-23 | Plug | 1 |
| 29 | 24 041 23 | Gasket - Breather | 1 |
| 30 | 24 050 01 | Filter - Breather | 1 |
| 31 | M-0545010 | Screw | 1 |
| 32 | 12 018 01 | Retainer - Reed | 1 |
| 33 | 24 402 03 | Reed | 1 |
| 34 | 12 351 01 | Lifter - Valve | 4 |
| 35 | 24 411 04 | Rod - Push | 4 |
| 36 | 24 041 08 | Gasket - Cylinder Head | 2 |
| 37 | 24 318 10 | Head - Assembly (# 2 Cylinder) | 2 |



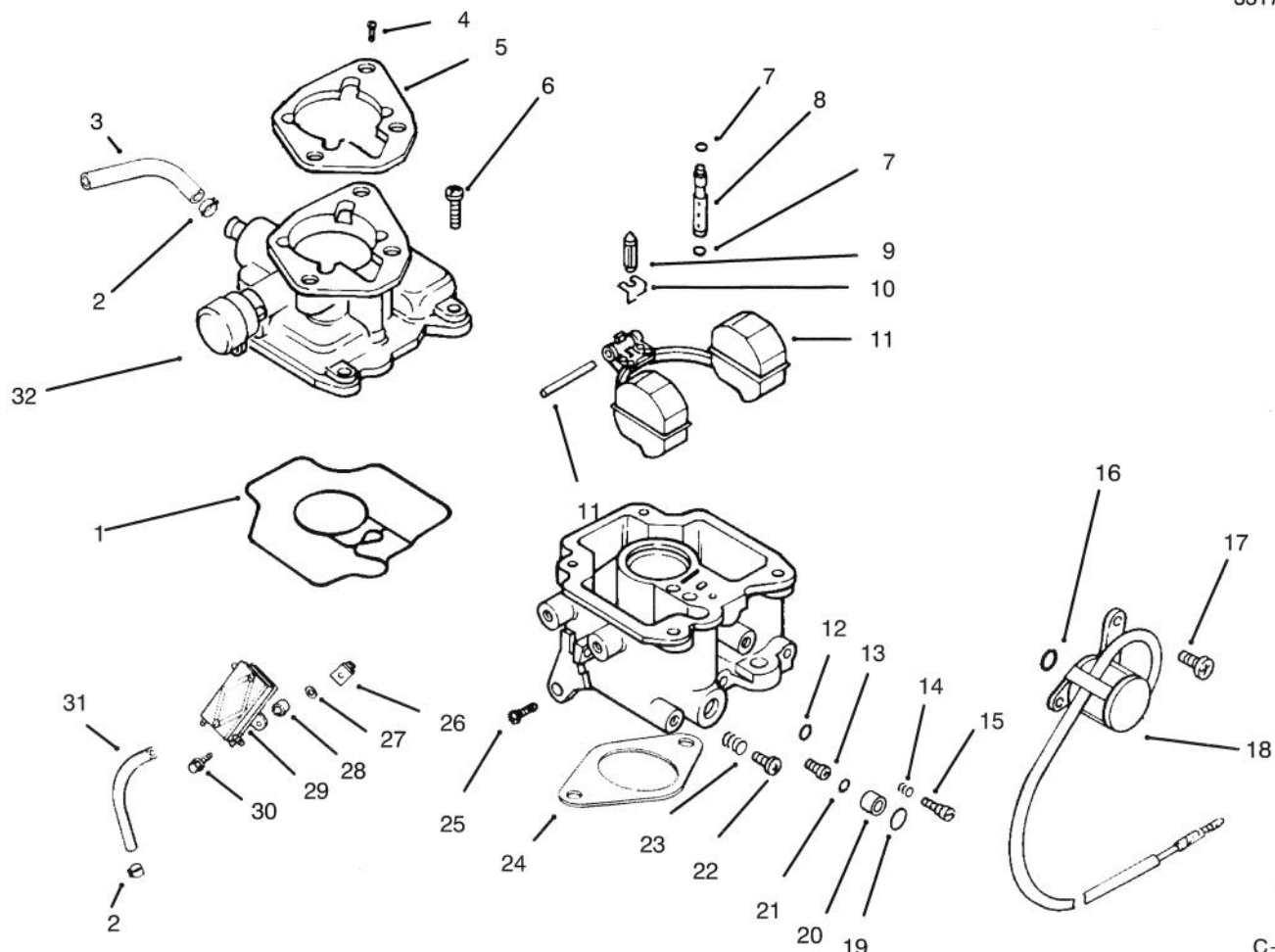
C-1613

CRANKSHAFT, PISTON AND RINGS

| Ref. No. | Part No. | Description | No. Used |
|----------|-----------|-----------------------|----------|
| 1 | 24 014 32 | Crankshaft | 1 |
| 2 | 12 139 01 | Plug, cup | 1 |
| 3 | 24 067 05 | Connecting Rod (Std.) | 2 |
| * | 24 067 06 | Connecting Rod (.25) | 2 |
| 4 | 24 108 01 | Ring Set (Std.) | 1 |
| * | 24 108 02 | Ring Set (.25) | 1 |

| Ref. No. | Part No. | Description | No. Used |
|----------|-----------|--|----------|
| * | 24 108 03 | Ring Set (.50) | 1 |
| 5 | 24 874 01 | Piston w/Ring Set (Std.) (Incl. Ref. # 4-6) | 2 |
| * | 24 874 02 | Piston w/Ring Set (.25) | 2 |
| * | 24 874 03 | Piston w/Ring Set (.50) | 2 |
| 6 | 24 018 01 | Retainer - Piston Pin | 4 |

*Not Illustrated

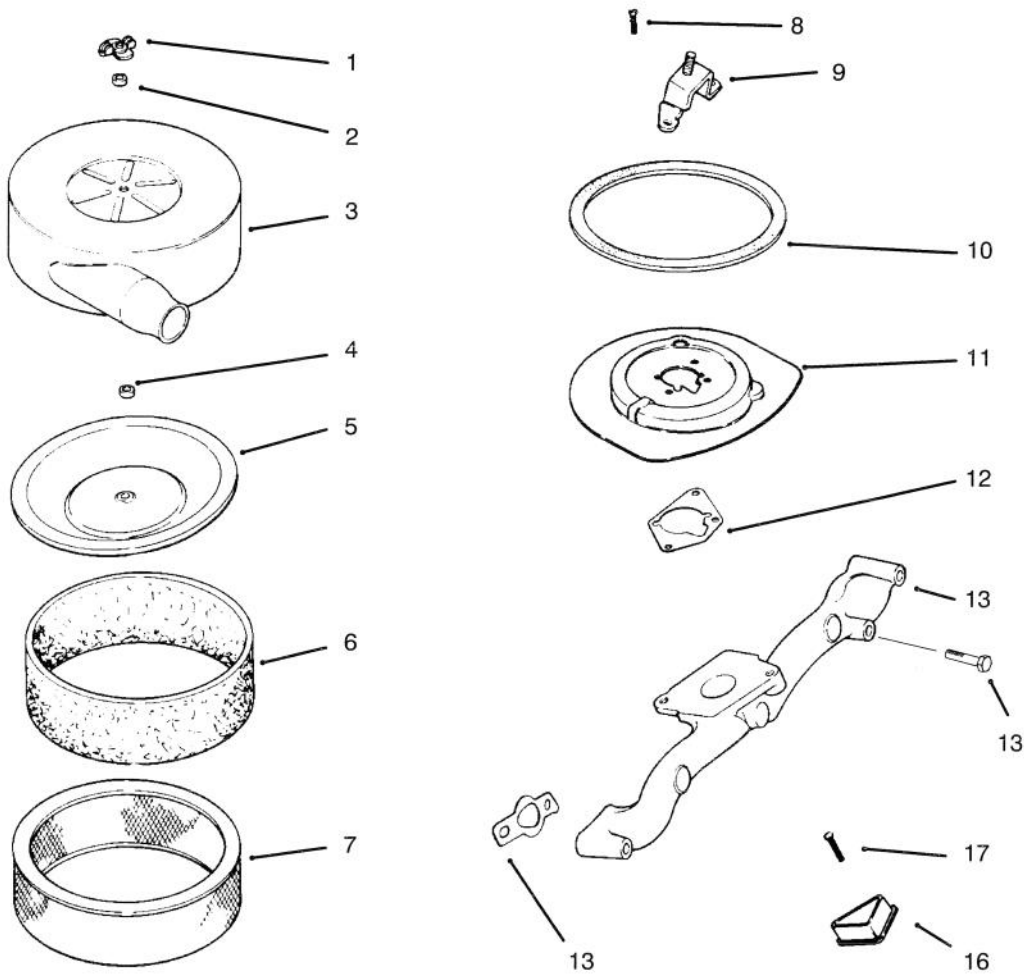


C-2348

CARBURETOR AND FUEL PUMP

| Ref. No. | Part No. | Description | No. Used | Ref. No. | Part No. | Description | No. Used |
|----------|-----------|--|----------|----------|-----------|---|----------|
| 1 | 24 041 09 | Gasket - Carburetor Body | 1 | 21 | 24 153 06 | "O"Ring | 1 |
| * | 24 853 02 | Kit - Carburetor w/Gasket (Incl. Ref. #1-15, 19-23 & 29) | 1 | 22 | 24 086 10 | Screw - Idle Speed Adjust | 1 |
| 2 | X-426-9 | Clamp - Hose | 4 | 23 | 24 089 10 | Spring - Idle Speed Adjust | 1 |
| 3 | 25 353 10 | Line - Fuel 9" | 1 | 24 | 24 041 17 | Gasket - Carburetor | 1 |
| 4 | M-0651030 | Screw | 2 | 25 | 24 086 05 | Screw - Throttle Stop | 1 |
| 5 | 24 041 06 | Gasket - Air Cleaner | 1 | 26 | 24 100 01 | Nut | 2 |
| 6 | 24 086 09 | Screw | 4 | 27 | X-25-52 | Washer | 2 |
| 7 | 24 153 02 | "O"Ring | 2 | 28 | 52 112 13 | Spacer | 2 |
| 8 | 24 337 01 | Jet - Slow | 1 | 29 | 24 393 04 | Pump - Fuel, Pulse | 1 |
| 9 | 24 462 01 | Valve - Inlet Needle | 1 | 30 | 24 086 31 | Screw | 2 |
| 10 | 24 154 01 | Clip - Inlet Needle Valve | 1 | 31 | 24 353 02 | Line - Fuel 15-1/2" | 1 |
| 11 | 24 757 02 | Kit - Float Repair | 1 | 32 | 24 757 07 | Kit - Choke Repair (Incl. Ref. # 33) | 1 |
| 12 | 24 153 03 | "O"Ring | 1 | *33 | 24 173 02 | Cap - Choke Lever | 1 |
| 13 | 24 337 02 | Jet - Main | 1 | * | | Carburetor Assembly (Incl. Ref. # 1-25 & 32) | 1 |
| 14 | 24 089 11 | Spring - Idle Adjust | 1 | * | 24 041 17 | Gasket - Carburetor | 1 |
| 15 | 24 368 01 | Needle - Idle Adjust | 1 | * | 24 757 03 | Kit - Carburetor Repair | 1 |
| 16 | 24 153 04 | "O"Ring | 1 | * | 24 757 01 | Kit - Solenoid Assembly | 1 |
| 17 | 24 086 07 | Screw | 2 | * | 24 755 01 | Kit - High Altitude (1500 meters) | 1 |
| 18 | 24 435 01 | Solenoid | 1 | * | 24 755 02 | Kit - High Altitude (3000 meters) | 1 |
| 19 | 24 153 05 | "O"Ring | 1 | | | | |
| 20 | 24 521 01 | Seat - Solenoid | 1 | | | | |

*Not Illustrated



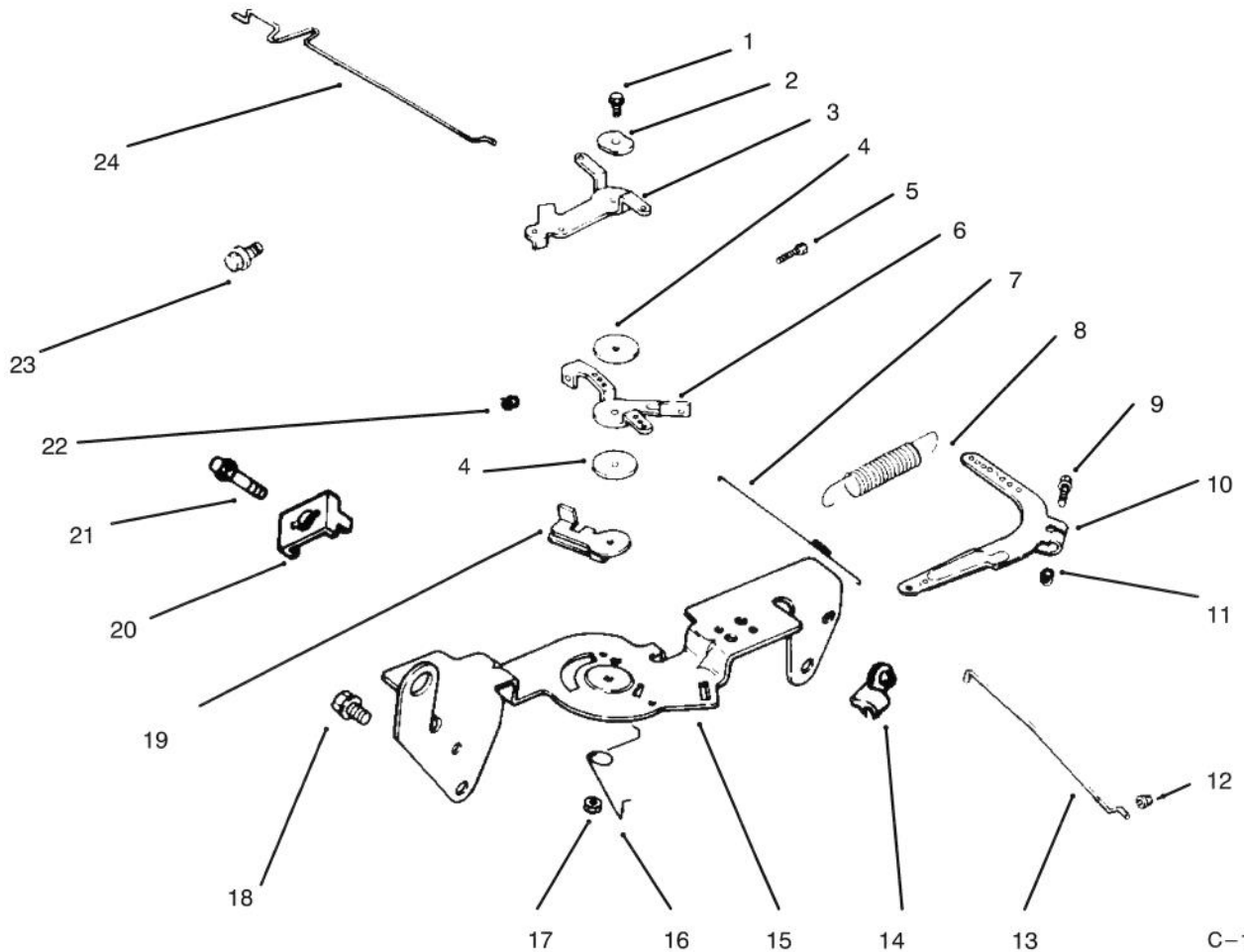
C-2349

AIR INTAKE/FILTRATION

| Ref. No. | Part No. | Description | No. Used |
|----------|-----------|---------------------------|----------|
| 1 | 12 100 01 | Nut – Wing | 2 |
| 2 | 230046 | Seal – Air Filter | 1 |
| 3 | 24 096 34 | Cover – Air Cleaner | 1 |
| 4 | 231032 | Seal – Breather | 1 |
| 5 | 24 096 01 | Cover – Inner Air Cleaner | 1 |
| 6 | 24 083 02 | Element – Precleaner | 1 |
| 7 | 47 083 03 | Element – Air Cleaner | 1 |
| 8 | M-0639016 | Screw | 3 |
| 9 | 24 126 22 | Bracket – Air Cleaner | 1 |

| Ref. No. | Part No. | Description | No. Used |
|----------|-----------|--------------------------|----------|
| 10 | 24 032 07 | Seal – Air Cleaner | 1 |
| 11 | 24 094 05 | Base – Air Cleaner | 1 |
| 12 | 24 041 06 | Gasket – Air Cleaner | 1 |
| 13 | 24 041 01 | Gasket – Intake Manifold | 2 |
| 14 | M-0639055 | Screw | 4 |
| 15 | 24 164 14 | Manifold | 1 |
| 16 | 24 096 17 | Cover – Blower Housing | 2 |
| 17 | 15 086 09 | Screw | 2 |
| * | 24 113 17 | Decal – Maintenance | 1 |

*Not Illustrated

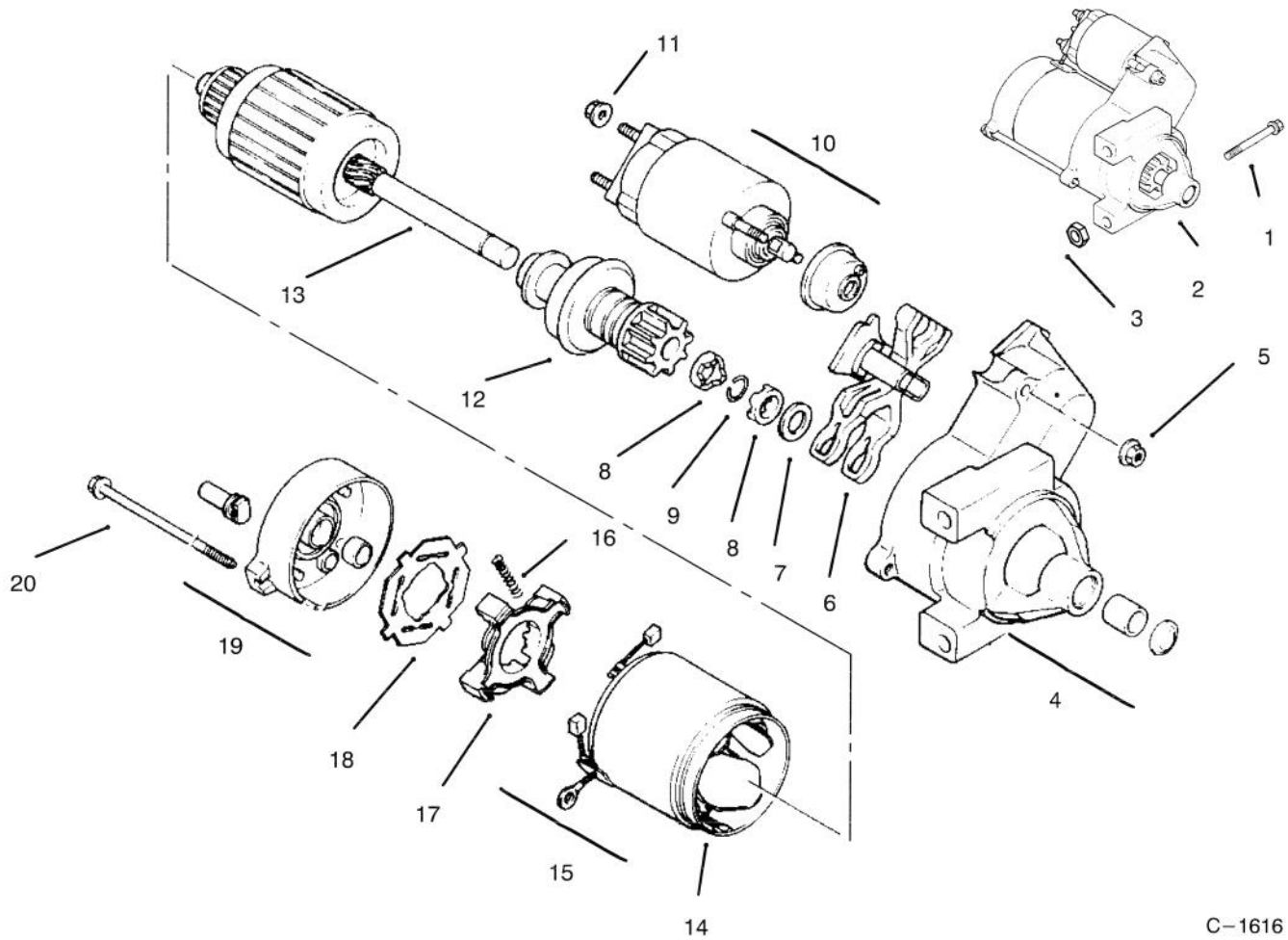


THROTTLE LINKAGE AND GOVERNOR CONTROLS

| Ref. No. | Part No. | Description | No. Used |
|----------|------------|--------------------------|----------|
| 1 | SM-0545020 | Screw | 1 |
| 2 | 41 468 03 | Washer - Wave | 1 |
| 3 | 24 090 05 | Lever - Choke | 1 |
| 4 | 24 468 01 | Washer | 3 |
| 5 | M-0401025 | Screw | 1 |
| 7 | 24 089 01 | Spring - Linkage | 1 |
| 6 | 24 090 03 | Lever - Throttle Control | 1 |
| 8 | 24 089 18 | Spring - Governor | 1 |
| 9 | SM-0642025 | Screw | 1 |
| 10 | 24 090 14 | Lever - Governor | 1 |
| 11 | SM-0641060 | Nut | 1 |
| 12 | 25 158 08 | Bushing - Linkage | 1 |

| Ref. No. | Part No. | Description | No. Used |
|----------|------------|---------------------------|----------|
| 13 | 24 079 01 | Linkage - Throttle | 1 |
| 14 | 25 158 11 | Bushing - Linkage | 1 |
| 15 | 24 126 13 | Bracket - Control | 1 |
| 17 | M-0547050 | Nut | 1 |
| 16 | 24 089 03 | Spring - Choke Return | 1 |
| 18 | SM-0645016 | Screw | 4 |
| 19 | 24 090 07 | Lever - Throttle Actuator | 1 |
| 20 | 12 237 01 | Clamp - Cable | 2 |
| 21 | SM-0545016 | Screw | 2 |
| 22 | M-0446030 | Nut | 1 |
| 23 | SM-0545016 | Screw | 1 |
| 24 | 24 079 02 | Linkage - Choke | 1 |

*Not Illustrated

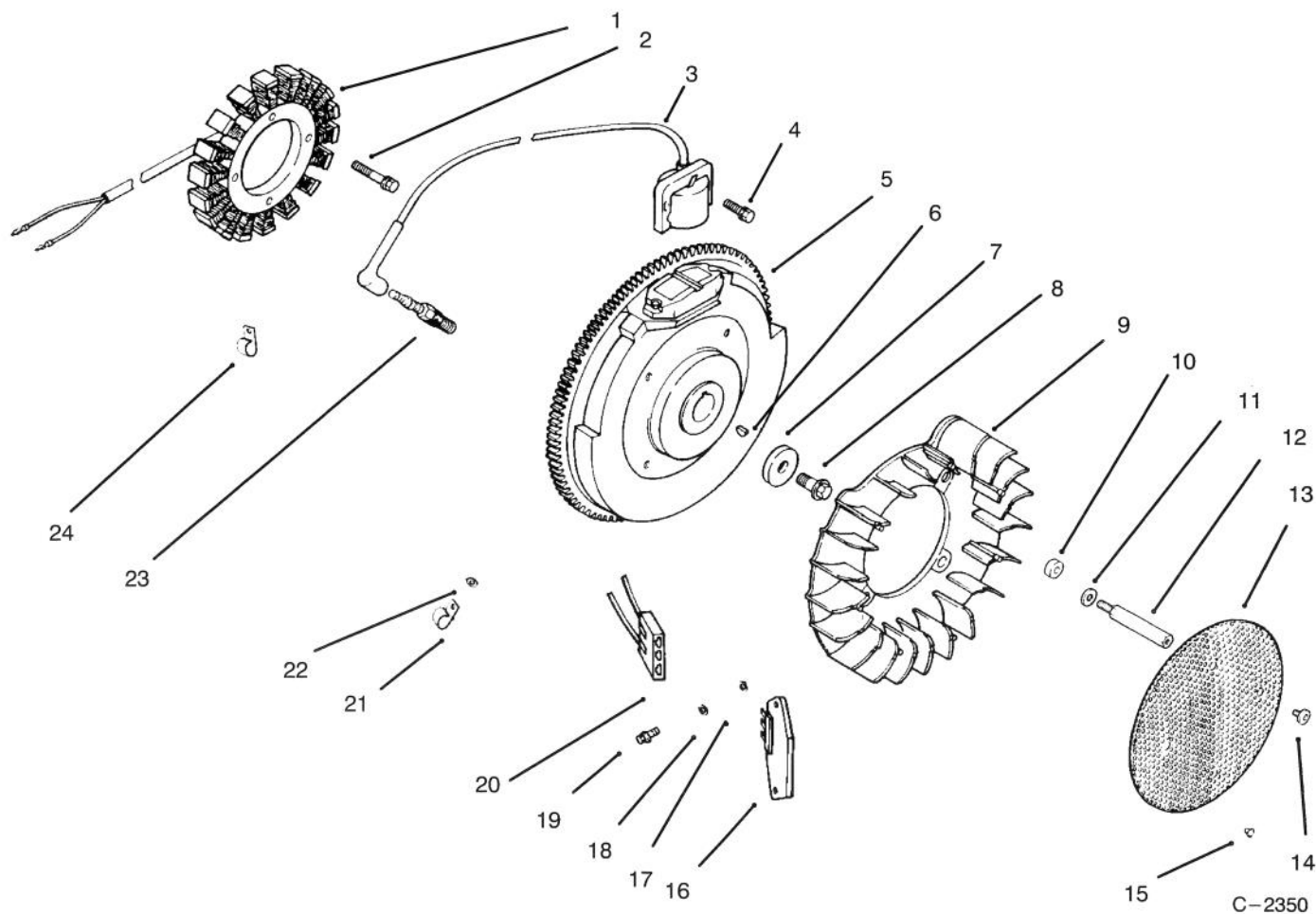


C-1616

STARTER

| Ref. No. | Part No. | Description | No. Used |
|----------|------------|---|----------|
| 1 | SM-0839080 | Screw | 2 |
| 2 | 24 098 01 | Starter - Solenoid Shift (Incl. Ref. # 4-20) | 1 |
| 3 | M-0841080 | Nut | 1 |
| 4 | 24 081 04 | Cap - Drive End | 1 |
| 5 | 52 100 10 | Nut - Starter | 2 |
| 6 | 12 090 10 | Lever - Starter Drive | 1 |
| 7 | 52 468 14 | Washer - Thrust | 1 |
| 8 | 52 100 08 | Nut - Stop Collar | 2 |
| 9 | 52 141 03 | Ring - Retainer | 1 |
| 10 | 52 435 02 | Solenoid | 1 |

| Ref. No. | Part No. | Description | No. Used |
|----------|-----------|----------------------------------|----------|
| 11 | 52 100 09 | Nut | 1 |
| 12 | 12 239 01 | Drive - Pinion | 1 |
| 13 | 12 170 03 | Armature - Starter | 1 |
| 14 | 12 471 01 | Frame | 1 |
| 15 | 52 221 01 | Kit - Brush (Incl. Ref. # 16) | 1 |
| 16 | 52 089 09 | Spring - Brush | 4 |
| 17 | 52 323 03 | Holder - Brush | 1 |
| 18 | 52 168 01 | Insulator | 1 |
| 19 | 12 301 01 | Cap - Commutator End | 1 |
| 20 | 52 211 05 | Bolt | 2 |

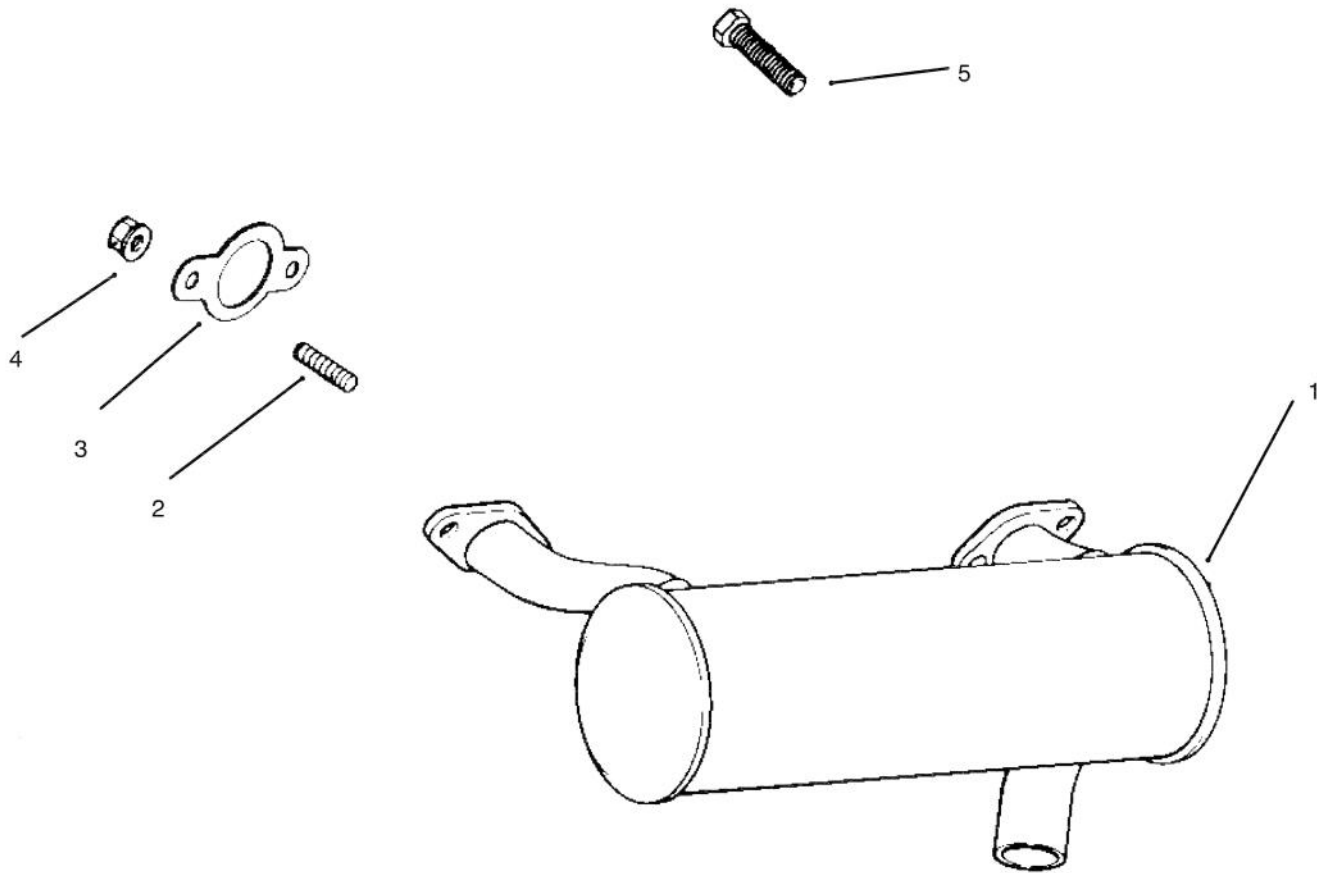


IGNITION AND CHARGING SYSTEM

| Ref. No. | Part No. | Description | No. Used |
|----------|------------|---------------------|----------|
| 1 | 24 085 01 | Stator - 15 amp | 1 |
| 2 | M-0548025 | Screw | 2 |
| 3 | 24 584 01 | Module - Ignition | 2 |
| 4 | SM-0545020 | Screw | 4 |
| 5 | 24 025 01 | Flywheel Assembly | 1 |
| 6 | X-42-15 | Key | 1 |
| 7 | 12 468 03 | Washer | 1 |
| 8 | 12 086 14 | Screw | 1 |
| 9 | 24 157 01 | Fan | 1 |
| 10 | 12 112 01 | Spacer - Fan | 4 |
| 11 | X-25-53 | Washer | 4 |
| 12 | 24 072 01 | Stud - Grass Screen | 4 |
| 13 | 24 162 13 | Screen - Grass | 1 |

| Ref. No. | Part No. | Description | No. Used |
|----------|-----------|------------------------|----------|
| 14 | M-0657010 | Screw | 4 |
| 15 | 25 086 43 | Screw - Set | 1 |
| 16 | 25 403 03 | Regulator - Rectifier | 1 |
| 17 | X-25-63 | Washer | 1 |
| 18 | X-25-92 | Washer | 2 |
| 19 | 24 086 18 | Screw | 2 |
| 20 | 236602 | Connector | 1 |
| 21 | 235173 | Clip - Cable | 1 |
| 22 | X-25-63 | Washer | 1 |
| 23 | 12 132 02 | Spark Plug | 2 |
| 24 | 48 154 02 | Clip - Cable | 1 |
| * | 24 176 40 | Harness - Wiring | 1 |
| * | 24 518 04 | Lead - Green, 18 Gauge | 1 |

*Not Illustrated



C-1618

EXHAUST

| Ref. No. | Part No. | Description | No. Used |
|----------|-----------|------------------|----------|
| 1 | 24 068 11 | Muffler | 1 |
| 2 | M-0829033 | Stud - Muffler | 4 |
| 3 | 24 041 02 | Gasket - Exhaust | 2 |

| Ref. No. | Part No. | Description | No. Used |
|----------|-----------|-------------|----------|
| 4 | M-0841080 | Nut | 4 |
| 5 | M-0839020 | Screw | 1 |

TORO PART NUMBER INDEX

| Part No. | Description | Pg. Ref. No. No. Qty. | Part No. | Description | Pg. Ref. No. No. Qty. |
|----------|-----------------------------|--------------------------|----------|----------------------------|--------------------------|
| 102950 | Washer | 2 72 1 | 46-8091 | Screw | 13 42 2 |
| 105805 | Nut | 2 73 1 | 46-8560 | Screw | 5 35 7 |
| 109989 | Spacer | 9 3 4 | 46-8560 | Screw - Hex. Hd. | 1 5 25 |
| 113050 | Cover - P.T.O. Switch | 2 39 1 | 46-8560 | Screw - Thread Forming | 18 44 2 |
| 113179 | Nut | 2 38 1 | 47-1980 | Cover Steering Shaft | 2 31 1 |
| 114263 | Spring - Seat | 9 9 2 | 48-7610 | Screw | 14 4 5 |
| 116716 | Switch - Clutch & Brake | 2 41 1 | 49-6430 | Pad - Reverse | 1 12 1 |
| 3-6498 | Washer | 19 12 1 | 49-6470 | Pad - Accelerator | 1 4 1 |
| 3-6498 | Washer - Thrust | 3 8 5 | 51-0780 | Slide Seat Assembly R.H. | 9 * 1 |
| 3-6498 | Washer - Thrust | 2 52 2 | 51-0790 | Slide Seat Adjust Assembly | 9 2 1 |
| 5-0930 | Key | 14 21 1 | 53-4430 | Decal - Oil | 6 51 1 |
| 11-4659 | Air Cleaner Assembly | 8 27 1 | 54-0080 | Transmission - Hydrostatic | 19 4 1 |
| 12-1109 | Lever - Idler | 11 27 1 | 54-0090 | Valve Assembly | 8 23 1 |
| 12-5950 | Rod - Battery Support | 13 18 1 | 54-0100 | Filter Head Assembly | 6 63 1 |
| 13-5969 | Differential Assembly | 18 21 1 | 54-0110 | Filter - Transmission Oil | 5 44 1 |
| 14-4109 | Hood | 13 3 1 | 54-0140 | Hub - Wheel | 4 2 2 |
| 19-1470 | Bolt - Shoulder | 5 41 2 | 54-0150 | Cylinder - Lift | 11 18 1 |
| 21-9260 | Cover - Dust | 1 21 1 | 54-0220 | Assembly - Clutch | 14 16 1 |
| 22-8330 | Plug | 10 19 1 | 54-0230 | Field Assembly | 15 1 1 |
| 22-8340 | Spring | 10 21 1 | 54-0240 | Fan | 19 40 1 |
| 22-8350 | Ball | 10 22 1 | 54-0260 | Spool | 10 1 1 |
| 22-8360 | Pin - Cam | 10 24 1 | 54-0280 | Shaft | 12 13 1 |
| 22-8370 | Seat - Check Valve | 10 23 1 | 54-0290 | Seal Repair Kit | 12 * 1 |
| 22-8380 | Retainer - Spring | 10 3 2 | 54-0300 | Piston | 12 3 1 |
| 22-8410 | Spring | 10 4 1 | 54-0310 | Head | 12 6 1 |
| 22-8480 | Ring - Retaining | 10 6 1 | 54-0320 | Gear | 19 3 1 |
| 22-8490 | Ring - Retaining | 10 7 1 | 54-0330 | Frame - Rear | 3 13 1 |
| 22-8500 | "O" Ring | 10 2 2 | 54-0450 | Axle Stand - R.H. | 6 60 1 |
| 23-1120 | Washer - Flat | 6 58 2 | 54-0460 | Axle Stand - L.H. | 5 39 1 |
| 24-5790 | Weight - Rear | 3 17 1 | 54-0560 | Spindle L. H. | 3 22 1 |
| 27-0410 | Bolt - Shoulder | 5 28 2 | 54-0570 | Spindle R.H. | 3 7 1 |
| 27-5200 | Spacer | 10 5 1 | 54-0880 | Decal - Tunnel | 2 47 1 |
| 27-6230 | Bolt - Shoulder | 11 31 1 | 54-0900 | Decal - Lift Control | 8 13 1 |
| 27-9080 | Bushing | 1 1 3 | 54-0910 | Decal - Warning | 5 32 1 |
| 27-9080 | Bushing | 11 6 4 | 54-0920 | Decal - Parking Brake | 8 1 2 |
| 27-9080 | Bushing | 3 31 2 | 54-0930 | Pulley - Transmission | 19 38 1 |
| 28-1120 | Plug | 10 18 1 | 54-0960 | Spring - Parking Brake | 11 42 1 |
| 28-2480 | Washer - Flat | 3 2 2 | 54-1000 | Tower - Top | 1 24 1 |
| 28-3894 | Wire - Positive | 14 29 1 | 54-1010 | Channel - Front | 5 45 1 |
| 28-3940 | Collar - Steering Shaft | 2 45 2 | 54-1060 | Bracket - Idler Mount | 6 55 1 |
| 29-0590 | Screen | 13 35 1 | 54-1120 | Bracket - Filter Head | 6 64 1 |
| 29-6163 | Switch | 19 26 1 | 54-1130 | Link - Idler Anchor | 5 22 2 |
| 33-1300 | Element Assembly | 7 6 1 | 54-1170 | Spring - Extension | 11 30 1 |
| 33-1310 | Baffle | 7 5 1 | 54-1220 | Support - Seat R.H. | 8 8 1 |
| 33-1320 | Cup | 7 4 1 | 54-1260 | Clamp - Battery | 13 9 1 |
| 33-1330 | Nut Assembly | 7 3 1 | 54-1270 | Bracket - Parking Brake | 11 8 1 |
| 33-1340 | Clamp Assembly | 7 2 1 | 54-1340 | Link - Steering | 2 43 1 |
| 33-1350 | Band Assembly | 7 1 2 | 54-1380 | JackShaft - V-Belt | 5 40 1 |
| 36-3220 | Pulley - Idler | 11 26 1 | 54-1380 | V-Belt | 14 17 1 |
| 36-4950 | Cap - Oil | 13 36 1 | 54-1390 | V-Belt - Traction | 6 59 1 |
| 37-7250 | Spacer | 6 53 2 | 54-1390 | V-Belt | 14 18 1 |
| 38-8000 | Filter - Fuel | 13 26 1 | 54-1410 | Spring - Idler | 5 21 2 |
| 43-5220 | Ring - Retaining | 12 12 1 | 54-1440 | Bracket - Tunnel | 2 50 2 |
| 44-8160 | Washer - Flat | 14 14 1 | 54-1451 | Control - Throttle, Choke | 1 25 2 |
| 44-8310 | Ring - Retaining | 15 3 2 | 54-1470 | Footrest - L.H. | 2 63 1 |
| 44-8320 | Spring | 15 10 3 | 54-1490 | Rod - Steering | 18 40 1 |
| 44-8330 | Spacer - Bearing | 15 6 1 | 54-1491 | Rod - Steering, Rear | 3 29 1 |
| 44-8340 | Collar - Bearing | 15 7 1 | 54-1550 | Support - Hood | 8 30 1 |
| 44-8360 | Field Coil, Rotor & Bearing | 15 4 1 | 54-1600 | Jackshaft | 18 29 1 |
| 44-8370 | Armature & Pulley Assembly | 15 5 1 | 54-1770 | Bracket - Cable Traction | 2 64 1 |
| 46-6680 | Bushing | 3 9 6 | 54-1800 | Plate - Engine Front | 5 8 2 |
| 46-6680 | Bushing - Flanged | 18 42 2 | 54-1810 | Plate - Engine, Rear | 5 11 2 |
| 46-7510 | Hood - Intake | 7 10 1 | 54-1830 | Support - Shield | 5 25 1 |

*Not Illustrated

TORO PART NUMBER INDEX (Cont.)

| Part No. | Description | Pg. Ref. No. No. Qty. | Part No. | Description | Pg. Ref. No. No. Qty. |
|----------|----------------------------|--------------------------|----------|-----------------------------|--------------------------|
| 54-1850 | Support - Battery | 13 16 1 | 56-2940 | Cam Ring Assembly | 20 14 1 |
| 54-1860 | Stop - Hood Upper | 13 6 2 | 56-2950 | Piston | 20 15 2 |
| 54-1870 | Stop - Hood, Lower | 5 31 2 | 56-2960 | Ring - Backup | 20 16 2 |
| 54-1880 | Strap - Fuel Tank | 13 4 2 | 56-2970 | "O"Ring | 20 17 2 |
| 54-1890 | Foam - Tank | 13 20 2 | 56-2980 | Pin - Coil | 20 18 1 |
| 54-1900 | Tower - Front | 1 3 1 | 56-2990 | Pintle Assembly | 20 19 1 |
| 54-1910 | Channel - Side R.H. | 5 6 1 | 56-3000 | Ring - Retaining | 20 20 2 |
| 54-1920 | Channel - Side L.H. | 5 33 1 | 56-3010 | Ball | 20 21 2 |
| 54-1930 | Fender R.H. | 5 1 1 | 56-3020 | Body - Check Valve | 20 22 2 |
| 54-1940 | Fender L.H. | 5 36 1 | 56-3030 | Ball | 20 25 1 |
| 54-1950 | Bracket - Support Bearing | 1 22 2 | 56-3040 | Spring - Relief Valve | 20 24 1 |
| 54-2000 | Pin - Pivot | 11 13 1 | 56-3050 | Plug - Relief Valve | 20 23 1 |
| 54-2040 | Follower Lever | 2 54 1 | 56-3060 | Pin - Dowel | 20 26 1 |
| 54-2060 | Bellcrank Assembly | 18 41 1 | 56-3080 | Ring - Retaining | 21 49 1 |
| 54-2070 | Anchor - Spring | 5 18 1 | 56-3090 | Ring - Retaining | 21 48 2 |
| 54-2100 | Pin - Pivot | 11 39 2 | 56-3100 | Screw - Hex. Socket Hd. | 21 45 4 |
| 54-2110 | Lever - Brake | 11 2 1 | 56-3110 | Pin - Roll | 21 44 6 |
| 54-2120 | Link - Parking Brake | 11 1 1 | 56-3120 | Carrier | 20 3 1 |
| 54-2160 | Bracket - Anchor | 14 10 1 | 56-3130 | Seal - Oil | 21 43 1 |
| 54-2260 | Pad Footrest L.H. | 2 62 1 | 56-3140 | Control Shaft Kit | 21 42 1 |
| 54-2270 | Pad - Footrest R.H. | 2 68 1 | 56-3170 | Insert - Cam Ring | 20 30 1 |
| 54-2290 | Pipe - Exhaust | 14 13 1 | 56-3180 | Spring - Valve | 20 27 2 |
| 54-2310 | Hydraulic Tube Assembly | 17 2 1 | 56-3200 | Body - Valve | 20 28 2 |
| 54-2310 | Hydraulic Tube Assembly | 13 28 1 | 56-3210 | Ball | 20 29 2 |
| 54-2330 | Pulley - Engine | 14 19 1 | 56-3220 | Motor Rotor & Ball Assembly | 21 39 1 |
| 54-2380 | Pulley - Input | 18 28 1 | 56-3230 | Output Shaft Assembly | 21 40 1 |
| 54-2390 | Pulley - Output | 18 1 1 | 56-3240 | Race - Motor | 21 41 1 |
| 54-2470 | Reservoir - Hydraulic | 13 34 1 | 56-3250 | Plug Assembly | 21 33 1 |
| 54-2500 | Channel - Middle | 5 19 1 | 56-3260 | "O"Ring | 21 34 1 |
| 54-2570 | Hydraulic Hose Assembly | 17 4 1 | 56-3270 | Seal - Oil | 21 35 1 |
| 54-2580 | Hydraulic Hose Assembly | 17 3 1 | 56-3280 | Bearing - Output | 21 36 1 |
| 54-2590 | Hydraulic Hose Assembly | 17 7 1 | 56-3290 | Ring - Retaining | 21 37 1 |
| 54-2610 | Hydraulic Hose Assembly | 17 5 1 | 56-3300 | Screw - Hex. Socket Hd. | 21 38 2 |
| 54-2620 | Hydraulic Hose Assembly | 17 6 1 | 56-3310 | Kit - Overhaul Seal | 21 * 1 |
| 54-2630 | Follower - Steering Shaft | 2 53 1 | 56-3320 | THook | 11 20 1 |
| 54-2640 | Cable - Traction Control | 2 44 1 | 56-3370 | Bracket - Spring | 11 22 2 |
| 54-3110 | Hinge - Seat | 8 3 1 | 56-3390 | Hydraulic Hose Assembly | 17 1 1 |
| 54-8970 | UBolt | 18 22 1 | 56-6590 | Screw | 8 14 1 |
| 54-9200 | Lever - Idler | 6 52 2 | 56-6920 | Bracket - Cable Extension | 11 40 1 |
| 55-3570 | Cap - Fuel | 13 2 1 | 57-3100 | Tie Rod - Steering | 3 35 2 |
| 55-3630 | Adjustable Relief Valve | 10 * 1 | 59-1470 | Shaft - Bellcrank | 18 43 1 |
| 55-3640 | Seat - Relief | 10 8 1 | 59-1500 | Pivot - Axle | 3 19 1 |
| 55-3650 | Plug | 10 26 1 | 59-1550 | Pedal - Shaft | 2 65 1 |
| 55-4300 | Decal | 11 43 1 | 59-1610 | Tube - Grease Fitting | 1 14 1 |
| 55-4320 | Gasket | 19 2 | 59-1620 | Bracket - Transaxle | 18 15 1 |
| 55-4860 | Guide - Belt | 5 37 1 | 60-8990 | Plate - Transaxle | 18 17 1 |
| 55-7120 | Switch - Brake | 11 9 1 | 60-9050 | Bearing - Steering Shaft | 2 46 1 |
| 55-7310 | Bracket - Idler | 11 34 1 | 60-9130 | Bracket - Jackshaft | 18 3 1 |
| 55-8660 | Assembly - Clamp | 14 9 1 | 60-9140 | Frame - Footrest | 2 51 1 |
| 56-2760 | Spring - Extension | 11 21 2 | 60-9150 | Tunnel | 2 66 1 |
| 56-2800 | Screw - Hex. Socket Hd. | 20 1 1 | 61-3610 | Decal - Warning | 11 29 2 |
| 56-2810 | Bearing - Input | 21 47 1 | 61-9780 | Hub Cap | 3 1 2 |
| 56-2820 | Seal - Oil | 21 46 1 | 62-4040 | Tank - Fuel | 13 15 1 |
| 56-2830 | Charge Pump Assembly | 20 2 1 | 62-4420 | Spacer | 3 32 9 |
| 56-2850 | Ring - Seal | 20 4 1 | 62-4530 | Idler - VBelt | 5 43 2 |
| 56-2860 | Plate - Pump | 20 5 1 | 62-4540 | Idler - Flat | 6 56 2 |
| 56-2870 | Ring - Seal | 20 6 1 | 62-6780 | Shaft - Steering | 2 30 1 |
| 56-2880 | Button | 20 7 2 | 62-7400 | Decal - Toro | 2 70 1 |
| 56-2890 | Pin - Dowel | 20 8 1 | 63-7590 | Relay | 8 42 1 |
| 56-2900 | Pin - Drive | 20 9 1 | 63-8360 | Key | 2 35 2 |
| 56-2910 | Input Shaft Assembly | 20 10 1 | 63-8440 | Decal - Hot Surface | 14 5 1 |
| 56-2920 | Ring - Seal | 20 11 1 | 65-5100 | Handle | 13 41 1 |
| 56-2930 | Pump Rotor & Ball Assembly | 20 12 1 | 66-0120 | Knob | 1 26 2 |

*Not Illustrated

TORO PART NUMBER INDEX (Cont.)

3316-997

| Part No. | Description | Pg. No. | Ref. No. | Qty. | Part No. | Description | Pg. No. | Ref. No. | Qty. |
|----------|-------------------------|---------|----------|------|----------|----------------------|---------|----------|------|
| 66-1570 | Frame - Lift | 11 | 14 | 1 | 237-42 | "O"Ring | 13 | 30 | 2 |
| 68-7330 | Decal - Danger | 13 | * | 1 | 237-78 | "O"Ring | 11 | 17 | 2 |
| 72-4060 | Bearing Assembly | 18 | 9 | 2 | 237-78 | "O"Ring | 8 | 19 | 2 |
| 74-0110 | Pedal - Traction | 1 | 11 | 1 | 237-79 | "O"Ring | 19 | 7 | 2 |
| 74-0720 | Tube - Manual | 8 | 41 | 1 | 237-79 | "O"Ring | 6 | 62 | 1 |
| 75-4130 | Spacer | 19 | 27 | 2 | 237-80 | "O"Ring | 19 | 49 | 2 |
| 75-5470 | Spacer Bearing | 19 | 22 | 1 | 237-100 | Grommet | 13 | 19 | 1 |
| 75-6820 | Meter - Hour | 8 | 29 | 1 | 242-50 | Nut | 4 | 6 | 8 |
| 76-8640 | Stud - Traction | 19 | 13 | 1 | 242-60 | Rim | 3 | 6 | 2 |
| 76-9430 | Spring - Extension | 18 | 19 | 1 | 242-71 | Bolt - Wheel | 4 | 1 | 8 |
| 76-9430 | Spring - Extension | 19 | 9 | | 242-76 | Rim | 4 | 8 | 2 |
| 77-0981 | Boot - Terminal | 13 | 10 | 1 | 2411-34 | Ball Joint | 1 | 16 | 1 |
| 77-3100 | Decal - Caution | 5 | 7 | 2 | 2411-34 | Joint - Ball | 19 | 30 | 1 |
| 80-3750 | Spacer | 18 | 12 | 2 | 2412-93 | Clamp - Hose | 9 | 7 | 1 |
| 80-3760 | Support - Seat, Front | 8 | 2 | 1 | 2412-93 | Clamp - Hose | 8 | 47 | 1 |
| 80-4910 | Footrest - R.H. | 2 | 69 | 1 | 2412-93 | Clamp - Hose | 14 | 3 | 2 |
| 80-4920 | Pedal - Accelerator | 1 | 8 | 1 | 2412-100 | "J"Clamp | 5 | 13 | 2 |
| 80-4930 | Footrest - Pedal | 1 | 6 | 1 | 2412-100 | "R"Clamp | 13 | 22 | 1 |
| 82-4640 | Battery | 13 | 12 | 1 | 2412-108 | Clamp - Hose | 13 | 23 | 4 |
| 82-4680 | Lever - Valve | 8 | 10 | 1 | 2412-120 | "R"Clamp | 8 | 38 | 2 |
| 82-4700 | Bracket - Lever, Valve | 8 | 20 | 1 | 251-210 | Bearing - Ball | 3 | 3 | 4 |
| 82-4720 | Pad - Footrest | 2 | 74 | 1 | 251-288 | Bearing w/Collar | 18 | 24 | 2 |
| 88-9830 | Switch - Ignition | 2 | 36 | 1 | 251-291 | Bearing - Pulley | 15 | 8 | 1 |
| 92-5435 | Support - Seat L.H. | 8 | 32 | 1 | 251-292 | Bearing - Field | 15 | 2 | 1 |
| 92-6250 | Mount - Engine | 5 | 10 | 1 | 251-304 | Rod End | 3 | 33 | 2 |
| 92-6251 | Mount - Engine | 5 | 12 | 1 | 251-304 | Rod End | 2 | 57 | 1 |
| 92-6252 | Mount - Cylinder | 6 | 47 | 1 | 251-304 | Rod End | 18 | 35 | 1 |
| 92-6254 | Bar - Tension | 5 | 24 | 1 | 251-305 | Rod End | 3 | 25 | 3 |
| 92-6255 | Axle - Rear | 3 | 10 | 1 | 251-305 | Rod End | 18 | 37 | 1 |
| 92-6257 | Plate - Pivot | 3 | 24 | 1 | 251-307 | Bearing | 19 | 19 | 2 |
| 92-6259 | Bracket | 8 | 43 | 1 | 251-341 | Flange - Bearing | 18 | 31 | 4 |
| 92-6260 | Duct - Engine | 14 | 6 | 1 | 256-154 | Bushing | 11 | 32 | 2 |
| 92-6266 | Panel - Tower Rear | 2 | 37 | 1 | 256-156 | Bushing | 1 | 10 | 2 |
| 92-6267 | Shield - Heat | 13 | 21 | 1 | 283-17 | Pin - Clevis | 8 | 16 | 1 |
| 92-6269 | Lever - Traction | 19 | 28 | 2 | 283-55 | Pin - Clevis | 11 | 23 | 1 |
| 92-6273 | Bracket - Spring | 18 | 23 | 1 | 288-10 | Cap - Pipe | 14 | 28 | 1 |
| 92-6274 | Plug - Cap | 13 | 25 | 1 | 289-46 | Nipple - Pipe | 14 | 27 | 1 |
| 92-6277 | Decal - Switch | 2 | 40 | 1 | 302-2 | Fitting - Grease | 18 | 20 | 2 |
| 92-6278 | Decal - Throttle Choke | 2 | 32 | 1 | 302-5 | Fitting - Grease | 3 | 4 | 4 |
| 92-6279 | Harness - Wire | 16 | * | 1 | 302-22 | Fitting - Grease | 1 | 13 | 1 |
| 92-6280 | Seat | 9 | 1 | 1 | 302-49 | Fitting - Grease | 3 | 21 | 3 |
| 92-6281 | Plate - Seat | 8 | 12 | 1 | 302-49 | Fitting - Grease | 18 | 25 | 1 |
| 92-6282 | Switch - Seat | 9 | 11 | 1 | 302-60 | Fitting - Grease 90° | 19 | 10 | |
| 92-6283 | Hose - Fuel | 13 | 24 | 2 | 321-2 | Screw | 11 | 36 | 2 |
| 92-6284 | Plate - Adapter, Seat | 9 | 5 | 2 | 321-2 | Screw - Hex. Hd. | 1 | 27 | 4 |
| 92-6287 | Wire - Ground | 14 | 25 | 1 | 321-2 | Screw - Hex. Hd. | 19 | 43 | 1 |
| 92-6288 | Decal - Service | 13 | 40 | 1 | 321-3 | Screw | 6 | 49 | 2 |
| 92-6289 | Swing Arm Assembly | 19 | 11 | | 321-3 | Screw - Hex. Hd. | 1 | 9 | 2 |
| 92-6290 | Spacer | 19 | 20 | 1 | 321-3 | Screw - Hex. Hd. | 13 | 1 | 2 |
| 92-6291 | Decal - Refueling | 13 | 38 | 1 | 321-4 | Screw | 9 | 10 | 2 |
| 92-6292 | Pad - Fender R.H. | 5 | 2 | 1 | 321-4 | Screw | 3 | 15 | 4 |
| 92-6293 | Pad - Fender L.H. | 5 | 38 | 1 | 321-4 | Screw | 8 | 36 | 5 |
| 94-1296 | Hose - Carburetor | 14 | 2 | 1 | 321-4 | Screw - Hex. Hd. | 2 | 61 | 14 |
| | Engine - Kohler 20 HP | 14 | 1 | 1 | 321-14 | Screw | 8 | 7 | 2 |
| 94-5410 | Decal Groundsmaster 120 | 13 | 37 | 2 | 321-14 | Screw | 5 | 16 | 2 |
| 231-122 | Tire | 4 | 9 | 2 | 321-23 | Screw | 8 | 9 | 2 |
| 231-126 | Tire | 3 | 5 | 2 | 322-2 | Screw | 5 | 30 | 4 |
| 232-27 | Valve Stem w/Cap | 4 | 7 | 2 | 322-3 | Screw - Hex. Hd. | 13 | 5 | 2 |
| 232-27 | Valve Stem w/Cap | 3 | 36 | 2 | 322-4 | Screw | 9 | 4 | 4 |
| 233-37 | Knob | 11 | 3 | 1 | 322-4 | Screw | 8 | 6 | 12 |
| 233-37 | Knob | 8 | 11 | 1 | 322-4 | Screw | 5 | 26 | 13 |
| 237-42 | "O"Ring | 10 | 20 | 2 | 322-4 | Screw | 11 | 33 | 4 |
| 237-42 | "O"Ring | 8 | 24 | 2 | 322-4 | Screw - Hex. Hd. | 1 | 2 | 19 |

*Not Illustrated

TORO PART NUMBER INDEX (Cont.)

| Part No. | Description | Pg. Ref. No. No. Qty. | Part No. | Description | Pg. Ref. No. No. Qty. |
|----------|---------------------------|--------------------------|----------|---------------------|--------------------------|
| 322-4 | Screw - Hex. Hd. | 18 18 6 | 3256-4 | Washer - Flat | 3 26 7 |
| 322-4 | Screw - Hex. Hd. | 18 5 6 | 3256-4 | Washer - Flat | 2 56 1 |
| 322-4 | Screw - Hex. Hd. | 13 17 2 | 3256-23 | Washer - Flat | 5 4 8 |
| 322-5 | Screw | 9 6 4 | 3256-23 | Washer - Flat | 8 5 6 |
| 322-6 | Screw | 5 9 8 | 3256-23 | Washer - Flat | 2 49 4 |
| 322-6 | Screw | 11 11 2 | 3256-24 | Washer - Flat | 11 4 2 |
| 322-6 | Screw | 5 23 11 | 3256-39 | Washer | 3 40 1 |
| 322-6 | Screw - Hex. Hd. | 19 15 2 | 3256-51 | Washer | 8 39 2 |
| 322-7 | Screw - Hex. Hd. | 19 17 1 | 3256-55 | Washer | 19 41 1 |
| 322-10 | Screw | 4 5 2 | 3256-68 | Washer | 19 8 2 |
| 322-10 | Screw - Hex. Hd. | 2 67 2 | 3257-5 | Key - Woodruff | 18 26 3 |
| 322-10 | Screw - Hex. Hd. | 18 11 4 | 3257-5 | Key - Woodruff | 19 36 3 |
| 323-7 | Screw | 5 20 3 | 3257-10 | Key - Woodruff | 4 3 2 |
| 323-8 | Screw - Hex. Hd. | 18 10 4 | 3257-24 | Key - Woodruff | 19 5 1 |
| 323-9 | Screw | 14 30 2 | 3258-19 | Screw - Round Hd. | 7 7 2 |
| 323-9 | Screw | 6 57 2 | 3272-6 | Pin - Cotter | 8 15 1 |
| 323-10 | Screw | 11 25 1 | 3272-10 | Pin - Cotter | 11 5 2 |
| 323-10 | Screw - Hex. Hd. | 14 22 1 | 3272-12 | Pin - Cotter | 3 37 2 |
| 323-11 | Screw | 5 42 2 | 3290-211 | Washer - Spring | 5 29 2 |
| 323-12 | Screw - Hex. Hd. | 14 23 1 | 3290-250 | Pin - Cotter | 5 15 2 |
| 323-13 | Screw - Hex. Hd. | 19 46 1 | 3290-355 | Pin - Cotter | 11 24 1 |
| 323-14 | Screw - Hex. Hd. | 19 34 1 | 3290-357 | Nut - Wizz | 14 31 1 |
| 323-16 | Screw - Hex. Hd. | 19 47 1 | 3290-379 | Cable Tie | 6 66 7 |
| 324-7 | Screw | 3 27 5 | 3290-440 | Washer - Belleville | 2 42 1 |
| 324-7 | Screw - Hex. Hd. | 2 58 1 | 3296-3 | Nut - Hex. | 1 15 1 |
| 324-7 | Screw - Hex. Hd. | 18 36 2 | 3296-3 | Nut - Lock | 19 32 1 |
| 324-11 | Screw - Hex. Hd. | 14 12 1 | 3296-6 | Nut | 11 35 1 |
| 325-6 | Screw | 3 38 2 | 3296-6 | Nut - Lock | 15 9 3 |
| 327-24 | Screw | 6 48 1 | 3296-9 | Nut | 19 25 2 |
| 3212-24 | Screw - Hex. Hd. | 14 15 1 | 3296-15 | Nut | 11 41 2 |
| 3217-6 | Nut | 19 16 4 | 3296-25 | Nut | 19 29 1 |
| 3217-6 | Nut - Square | 14 7 1 | 3296-29 | Nut - Lock | 8 4 12 |
| 3220-1 | Nut - Hex. Jam | 19 31 1 | 3296-29 | Nut - Lock | 11 7 6 |
| 3220-1 | Nut - Jam | 1 17 1 | 3296-29 | Nut - Lock | 5 14 33 |
| 3220-4 | Nut - Hex. Jam | 18 38 2 | 3296-29 | Nut - Lock | 3 16 8 |
| 3220-4 | Nut - Jam | 3 28 3 | 3296-29 | Nut - Lock | 13 7 9 |
| 3220-6 | Nut - Jam | 11 12 2 | 3296-29 | Nut - Lock | 18 4A/R |
| 3220-19 | Nut - Jam | 3 34 2 | 3296-29 | Nut - Lock | 4 4 2 |
| 3229-1 | Bolt - Carriage | 13 11 4 | 3296-29 | Nut - Lock | 9 8 8 |
| 3230-1 | Bolt - Carriage | 18 30 6 | 3296-29 | Nut - Lock | 19 14A/R |
| 3230-3 | Bolt - Carriage | 14 20 1 | 3296-29 | Nut - Lock | 1 18 24 |
| 3234-1 | Screw - Hex. Flange Hd. | 18 14 5 | 3296-39 | Nut | 8 37 1 |
| 3234-14 | Screw | 5 3 4 | 3296-39 | Nut | 14 26 2 |
| 3241-1 | Screw - Set | 18 2 4 | 3296-41 | Nut - Hex. | 3 12 1 |
| 3241-2 | Screw - Set | 19 37 2 | 3296-42 | Nut - Lock | 6 65 2 |
| 3245-35 | Screw - Set | 18 8 4 | 3296-42 | Nut - Lock | 13 14 8 |
| 3250-46 | Screw | 19 33 2 | 3296-42 | Nut - Lock | 8 21 19 |
| 3253-3 | Washer | 11 37 2 | 3296-42 | Nut - Lock | 1 23 16 |
| 3253-3 | Washer - Lock | 19 42 1 | 3296-44 | Nut - Lock | 11 28 1 |
| 3253-3 | Washer - Lock | 6 50 2 | 3296-44 | Nut - Lock | 5 17 6 |
| 3253-4 | Washer - Lock | 14 8 1 | 3296-44 | Nut - Lock | 18 6 4 |
| 3253-5 | Washer - Lock | 19 39 4 | 3296-48 | Nut | 3 23 5 |
| 3253-5 | Washer - Lock | 19 48 4 | 3296-48 | Nut - Lock | 18 39 2 |
| 3253-6 | Washer - Lock | 14 11 2 | 3296-48 | Nut - Lock | 2 55 1 |
| 3253-7 | Washer | 3 39 2 | 3296-61 | Nut | 6 46 1 |
| 3254-6 | Washer - Lock, Int. Tooth | 14 24 1 | 32103-22 | Nut - Wing | 13 8 3 |
| 3255-5 | Washer - Lock | 19 45 3 | 32104-76 | Screw | 8 40 4 |
| 3255-8 | Washer - Lock, Ext. Tooth | 6 69 1 | 32107-11 | Nut - Square | 7 8 2 |
| 3256-1 | Washer | 13 13 4 | 32115-5 | Nut - Square | 2 60 4 |
| 3256-1 | Washer | 11 38 2 | 32120-64 | Ring - Snap | 19 1 1 |
| 3256-1 | Washer - Flat | 8 25 10 | 32121-10 | Pin - Roll | 1 28 1 |
| 3256-3 | Washer - Flat | 18 7 6 | 32121-20 | Pin - Roll | 1 19 1 |
| 3256-3 | Washer - Flat | 6 54 2 | 32121-31 | Pin - Roll | 1 20 2 |

*Not Illustrated

TORO PART NUMBER INDEX (Cont.) 3316-997

| Part No. | Description | Pg. Ref. No. No. Qty. | Part No. | Description | Pg. Ref. No. No. Qty. |
|----------|------------------------|--------------------------|----------|------------------------------|--------------------------|
| 32121-51 | Pin - Roll | 1 7 1 | 32151-48 | Ring - Retaining | 3 11 2 |
| 32121-51 | Pin - Roll | 3 30 1 | 32152-10 | Nut - Lock | 12 2 1 |
| 32121-77 | Pin Roll | 2 59 2 | 32153-3 | Nut | 11 15 2 |
| 32128-20 | Nut - Flange Lock | 2 48 2 | 353-370 | Fitting - Hydraulic 90° | 19 6 2 |
| 32128-20 | Nut - Flange Lock | 6 67 1 | 353-371 | Fitting - 90° | 6 61 2 |
| 32144-1 | Screw - Thread Forming | 11 10 2 | 353-375 | Fitting - 90° | 11 19 1 |
| 32144-11 | Screw - Thread Forming | 5 5 2 | 353-375 | Fitting - 90° | 8 22 1 |
| 32144-15 | Screw | 3 18 2 | 353-385 | Fitting - Hydraulic Straight | 13 29 2 |
| 32144-18 | Screw | 8 45 2 | 353-431 | Fitting - 45° | 11 16 1 |
| 32144-19 | Screw - Round Hd. | 19 44 3 | 353-511 | Fitting | 8 17 2 |
| 32149-1 | Nut - Lock | 5 27 1 | 353-511 | Fitting - Hydraulic 90° | 19 35 2 |
| 32149-1 | Nut - Lock | 18 32 6 | 353-545 | Fitting | 8 18 1 |

PRODUCT CHANGES

In an effort to make improvements available to TORO owners as quickly as possible, minor changes are incorporated into Toro's products from time to time that do not become immediately shown in the Parts Catalog. If such a change has been made in your unit, which is not reflected in your manual, see your TORO Distributor or his Authorized TORO Service Dealer for information and part numbers.

IDENTIFICATION AND ORDERING

MODEL AND SERIAL NUMBERS

The Groundsmaster 120 has two identification numbers; a model number and a serial number. The two numbers are stamped on a plate which is located on the main frame under the seat. In any correspondence concerning the Groundsmaster 120, supply model and serial numbers to assure that correct information and replacement parts are obtained.

To order replacement parts from an Authorized TORO Service Dealer, supply the following information:

1. Model and serial number of the Groundsmaster 120.
2. Part number, description, and the quantity of part(s) desired.

NOTE: Do not order by reference number if a parts catalog is being used; use the PART NUMBER.

TABLE OF CONTENTS

| Description | Page | Description | Page |
|--|------|---|------|
| Frame And Steering Assembly | 1 | Transmission Assembly | 19 |
| Rear Axle Assembly | 3 | Hydrostatic Transmission Assembly | 20 |
| Front Wheel Assembly | 4 | Differential Assembly | 22 |
| Frame And Jackshaft Assembly | 5 | Engine Kohler Model CH20QS Spec 64556 | |
| Air Cleaner Assembly | 7 | Baffles & Shroud | 24 |
| Seat Support Assembly | 8 | Oil Pan/Lubrication | 25 |
| Seat Assembly | 9 | Crankcase | 26 |
| Valve Assembly No.54-0090 | 10 | Cylinder Head, Valve & Breather | 27 |
| Parking Brake & Frame Assembly | 11 | Crankshaft, Piston & Rings | 28 |
| Hydraulic Lift Cylinder No. 54-0150 | 12 | Carburetor And Fuel Pump | 29 |
| Hood, Fuel Tank & Hydraulic Reservoir Assembly | 13 | Air Intake / Filtration | 30 |
| Engine Assembly | 14 | Throttle Linkage & Governor Control | 31 |
| Clutch Assembly No. 54-0220 | 15 | Starter | 32 |
| Electric Schematic | 16 | Ignition And Charging System | 33 |
| Hydraulic Schematic | 17 | Exhaust | 34 |
| Differential Assembly | 18 | Numeric Index, Toro P/N Only | 35 |

Optional equipment

| Description | Model No./Part No. | Description | Model No./Part No. |
|-------------------------------|--------------------|--------------------------------------|--------------------|
| Flotation Kit | 30759 | 44" Grass Collection System | 30751 |
| 44" Deck Baffle Kit | 60-9030 | 52" Grass Collection System | 30576 |
| 52" Deck Baffle Kit | 68-7210 | 44" Recycler Kit | 59220 |
| 44" Leaf Mulcher Deck | 30752 | 52" Recycler Kit | 59225 |
| 52" Leaf Mulcher Deck | 30700 | Brake Kit | 30758 |
| Wheel Weight Kit | 56-6620 | Tire Chain Kit | 56-6630 |
| 44" Snowthrower | 30761 | Rear Weight | 62-6590 |
| 44" Side Discharge Deck | 30544 | Cab Kit | |
| 48" Rear Discharge Deck | 30747 | | |
| 52" Side Discharge Deck | 30753 | European Complacence Parts Kit | 93-9450 |