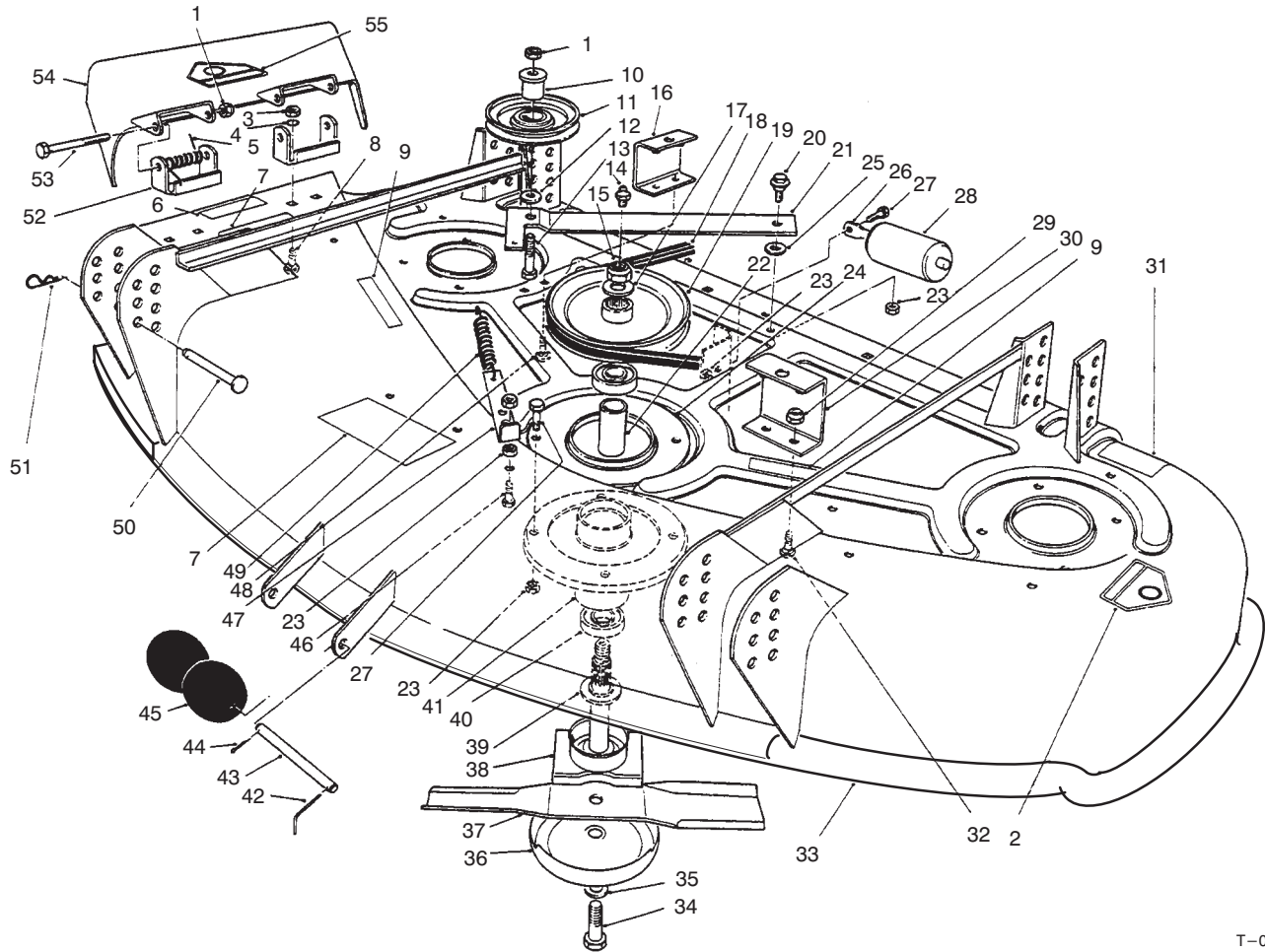




MODEL NO. 30544-690001 & UP

PARTS CATALOG

44" Side Discharge Rotary Cutting Unit
For Groundsmaster 120

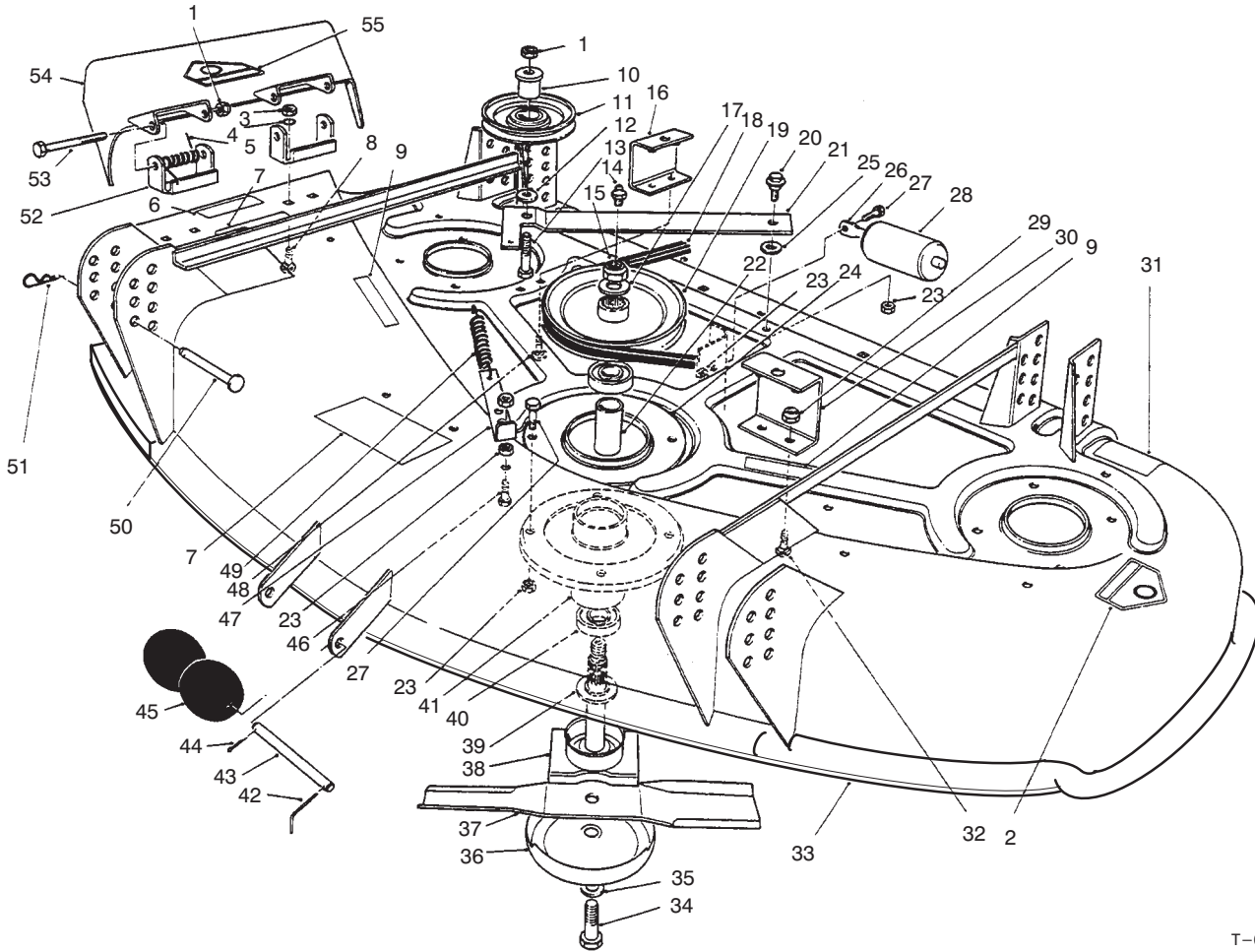


T-0085

DECK & SPINDLE ASSEMBLY

| Ref. No. | Part No. | Description | No. Used |
|----------|----------|---------------------------|----------|
| 1 | 3296-5 | Nut - Lock | 3 |
| 2 | 43-8480 | Decal - Danger | 1 |
| 3 | 3217-6 | Nut - Lock | 4 |
| 4 | 3253-4 | Washer - Lock | 4 |
| 5 | 40-6230 | Spring - Deflector | 2 |
| 6 | 66-6380 | Decal - Deflector Missing | 1 |
| 7 | 66-1340 | Decal - Danger | 2 |
| 8 | 3230-20 | Bolt - Carriage | 4 |
| 9 | 67-5360 | Decal - Cover Missing | 2 |
| 10 | 65-5950 | Bushing - Pulley | 1 |
| 11 | 65-5940 | Pulley - Idler | 1 |
| 12 | 7-0081 | Washer - Special | 1 |
| 13 | 3211-8 | Screw-Hex. Hd. | 1 |
| 14 | 302-2 | Fitting - Grease | 3 |
| 15 | 32146-20 | Nut - Hex. | 3 |
| 16 | 55-7050 | Bracket - Cover RH | 1 |
| 17 | 7-4150 | Washer - Spindle | 3 |

| Ref. No. | Part No. | Description | No. Used |
|----------|----------|--|----------|
| 18 | 54-1370 | "V"Belt | 1 |
| 19 | 67-7690 | Pulley - Spindle | 3 |
| 20 | 19-1470 | Bolt - Shoulder | 1 |
| 21 | 55-7430 | Lever - Deck | 1 |
| 22 | 67-7580 | Spacer - Bearing | 3 |
| 23 | 32152-1 | Nut - Hex. | 16 |
| 24 | 55-8280 | Ring - Deck Support | 3 |
| 25 | 23-1120 | Washer | 1 |
| 26 | 62-4480 | Rod - Roller | 1 |
| 27 | 322-4 | Screw-Hex. Hd. | 13 |
| 28 | 36-1740 | Roller - Deck | 1 |
| 29 | 3296-16 | Nut - Lock | 4 |
| 30 | 55-7060 | Bracket - Cover LH | 1 |
| 31 | 68-8340 | Decal - Blade Bolt Torque | 1 |
| 32 | 3229-3 | Bolt - Carriage | 2 |
| 33 | 94-6024 | 44" Deck Assembly (Incl. Ref. #2, 6, 7, 9 & 31) | 1 |

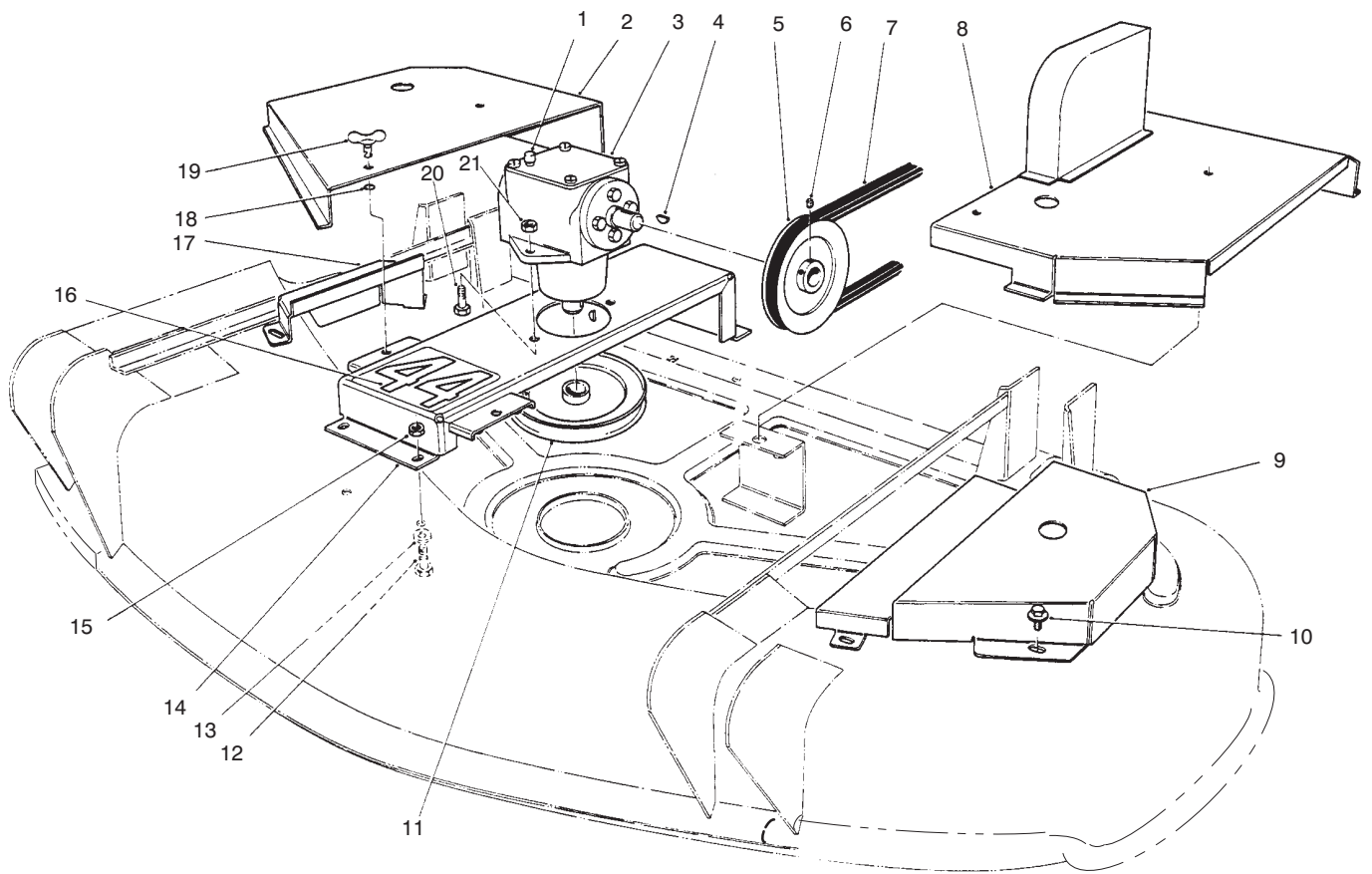


T-0085

DECK & SPINDLE ASSEMBLY (Continued)

| Ref. No. | Part No. | Description | No. Used | Ref. No. | Part No. | Description | No. Used |
|----------|----------|-------------------|----------|----------|----------|---|----------|
| 34 | 51-4060 | Bolt - Blade | 3 | 47 | 54-1180 | Anchor - Deck Spring | 1 |
| 35 | 3253-8 | Washer - Lock | 3 | 48 | 3229-11 | Bolt - Carriage | 2 |
| 36 | 67-7560 | Cup - Anti-Scalp | 3 | 49 | 54-1160 | Spring - Extension | 1 |
| 37 | 54-0010 | Blade | 3 | 50 | 283-55 | Pin - Clevis | 4 |
| 38 | 71-2780 | Shaft - Spindle | 3 | 51 | 3290-355 | Pin - Cotter | 4 |
| 39 | 67-7570 | Spacer - Spindle | 3 | 52 | 29-5590 | Bracket - Deflector Pivot | 2 |
| 40 | 251-257 | Bearing | 6 | 53 | 3211-15 | Screw - Hex. Hd. | 2 |
| 41 | 67-7590 | Housing - Spindle | 3 | 54 | 13-3899 | Deflector - Grass (Incl. Ref. #55) | 1 |
| 42 | 57-0690 | Pin - Special | 1 | 55 | 54-9220 | Decal - Danger | 1 |
| 43 | 40-6400 | Shaft - Roller | 1 | * | 67-7660 | Spindle Assembly (Incl. Ref. #14, 15, 17, 19, 22 & 38-41) | 3 |
| 44 | 3272-11 | Pin - Cotter | 1 | | | | |
| 45 | 29-4820 | Roller | 2 | | | | |
| 46 | 322-5 | Screw - Hex. Hd. | 1 | | | | |

*Not Illustrated

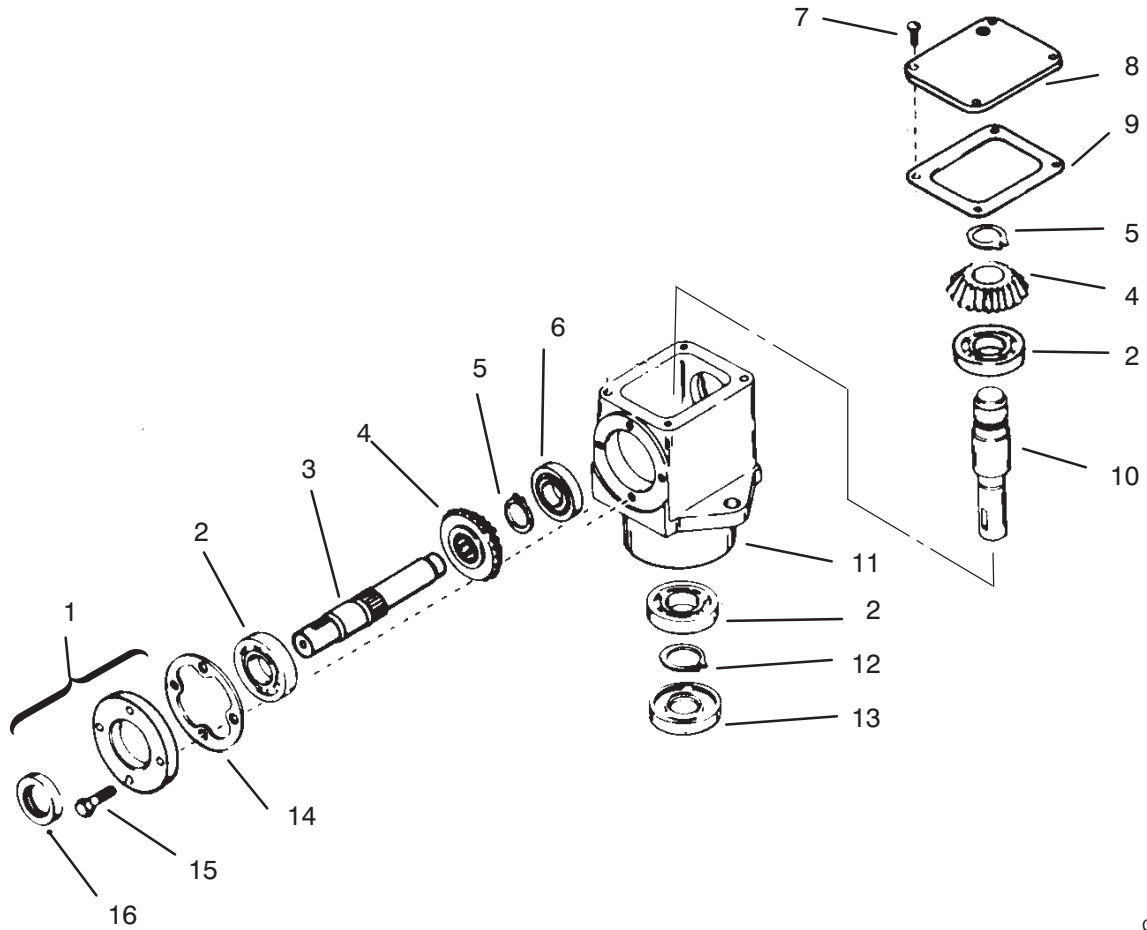


T-0086

DECK DRIVE ASSEMBLY

| Ref. No. | Part No. | Description | No. Used |
|----------|----------|---|----------|
| 1 | 302-14 | Cap - Vent | 1 |
| 2 | 54-2240 | Cover - Deck | 1 |
| 3 | 54-2320 | Gearbox - Deck Drive | 1 |
| 4 | 3257-30 | Key - Woodruff | 2 |
| 5 | 54-2360 | Input Pulley Assembly (Incl. Ref. #6) | 1 |
| 6 | 3245-9 | Screw - Set | 4 |
| 7 | 54-1360 | "V" Belt | 1 |
| 8 | 55-7040 | Cover - Deck | 1 |
| 9 | 54-2220 | Cover - Deck LH | 1 |
| 10 | 46-8560 | Screw - Self Tapping | 5 |
| 11 | 54-2350 | Output Pulley Assembly (Incl. Ref. #6) | 1 |

| Ref. No. | Part No. | Description | No. Used |
|----------|----------|-------------------|----------|
| 12 | 322-4 | Screw - Hex. Hd. | 4 |
| 13 | 3256-23 | Washer - Flat | 2 |
| 14 | 55-7030 | Bracket - Gearbox | 1 |
| 15 | 32152-1 | Nut - Hex. | 4 |
| 16 | 54-2760 | Decal - 44" | 1 |
| 17 | 54-2250 | Cover - Deck RH | 1 |
| 18 | 249-35 | Ring - Retaining | 4 |
| 19 | 249-36 | Stud - Wing | 4 |
| 20 | 323-6 | Screw - Hex. Hd. | 2 |
| 21 | 32152-2 | Nut - Lock | 2 |



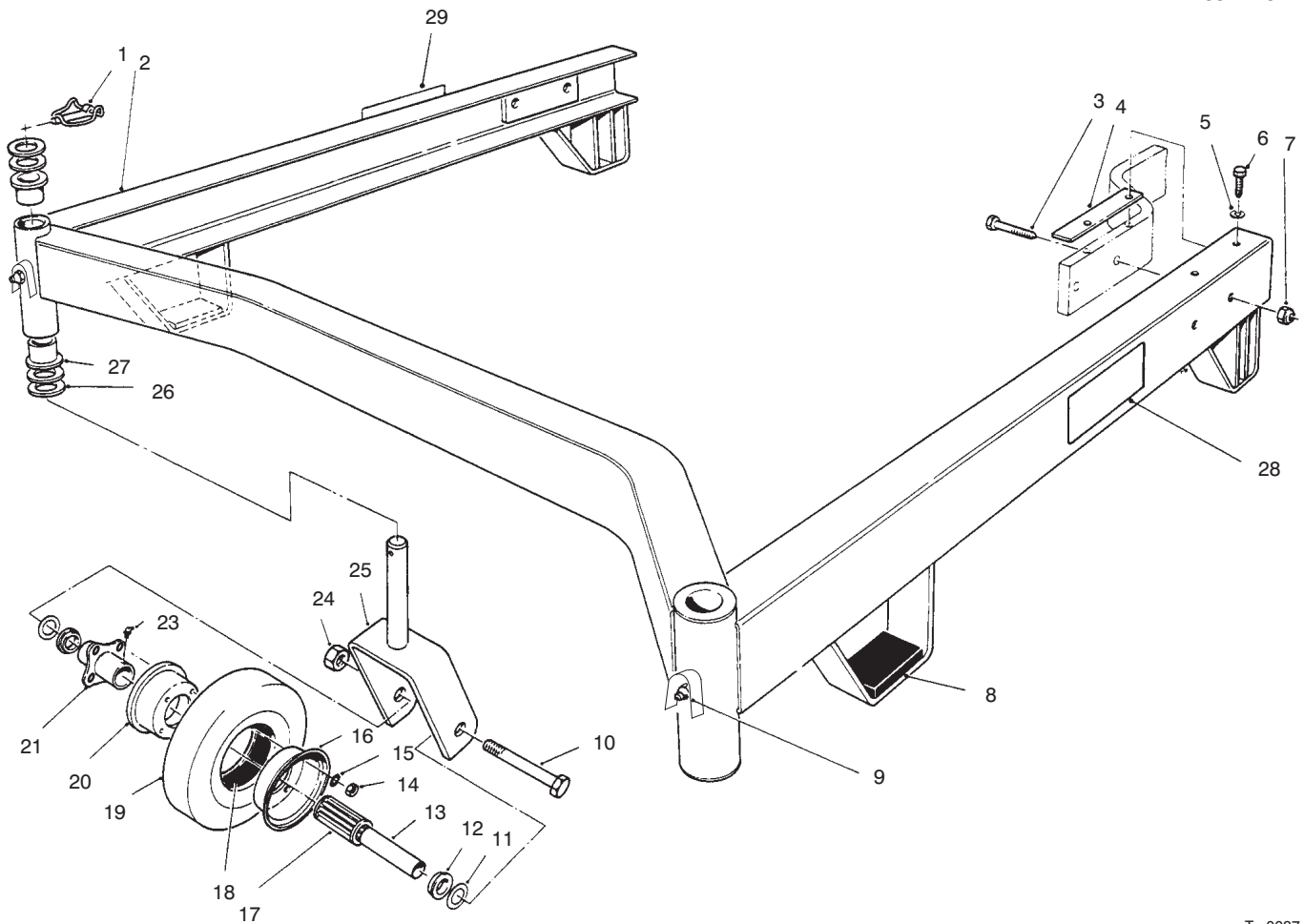
C-1304A

GEARBOX ASSEMBLY

| Ref. No. | Part No. | Description | No. Used |
|----------|----------|--|----------|
| 1 | 786029 | Retainer Assembly (Incl. Ref. #15 & 16) | 1 |
| 2 | 780034 | Bearing - Ball | 1 |
| 3 | 776196 | Shaft - Input | 1 |
| 4 | 778101 | Gear - Miter | 1 |
| 5 | 788018 | Ring - Snap | 1 |
| 6 | 780024 | Bearing - Ball | 1 |
| 7 | 792025 | Screw - Round Hd. | 1 |
| 8 | 772093 | Cover - RH | 1 |
| 9 | 788028 | Gasket - Cover | 1 |

| Ref. No. | Part No. | Description | No. Used |
|----------|----------|--|----------|
| 10 | 776153 | Shaft - Output | 1 |
| 11 | 770026A | Housing - Right Angle Drive | 1 |
| 12 | 788019 | Ring - Snap | 1 |
| 13 | 788029 | Seal - Oil | 1 |
| 14 | 788030 | Gasket - Cap | 1 |
| 15 | 792026 | Screw - Hex. Hd. | 1 |
| 16 | 788031 | Seal - Oil | 1 |
| * | 54-2320 | Gear Box Assembly | 1 |
| * | 794375 | Head Assembly RH (Incl. Ref. #2-16) | 1 |

*Not Illustrated



T-0087

CARRIER FRAME ASSEMBLY

| Ref. No. | Part No. | Description | No. Used |
|----------|----------|---|----------|
| 1 | 3290-384 | Pin - Lynch | 2 |
| 2 | 94-5830 | 44" Suspension Assembly (Incl. Ref. #9 & 27) | 1 |
| 3 | 323-9 | Screw-Hex. Hd. | 4 |
| 4 | 62-6980 | Shim - Carrier | 2 |
| 5 | 3256-24 | Washer - Flat | 4 |
| 6 | 3235-21 | Screw-Hex. Hd. | 4 |
| 7 | 32152-2 | Nut - Hex. | 4 |
| 8 | 74-0340 | Cushion - Rubber | 2 |
| 9 | 302-5 | Fitting - Grease | 2 |
| 10 | 325-19 | Screw-Hex. Hd. | 2 |
| 11 | 3256-6 | Washer - Thrust | 4 |
| 12 | 62-5580 | Bushing | 4 |
| 13 | 68-8980 | Bushing - Spanner | 2 |
| 14 | 3217-6 | Nut - Hex. | 8 |
| 15 | 3253-4 | Washer - Lock | 8 |

| Ref. No. | Part No. | Description | No. Used |
|----------|----------|--|----------|
| 16 | 68-8930 | Wheel Half - Male | 2 |
| 17 | 62-5570 | Bearing - Roller | 2 |
| 18 | 68-8950 | Tube w/Valve | 2 |
| 19 | 68-8960 | Tire | 2 |
| 20 | 68-8920 | Wheel Half - Female | 2 |
| 21 | 68-8940 | Hub Centered | 2 |
| 23 | 302-61 | Fitting - Grease | 2 |
| 24 | 32153-5 | Nut - Lock | 2 |
| 25 | 68-8900 | Fork - Caster | 2 |
| 26 | 3-6781 | Washer - Thrust | 8 |
| 27 | 94-1291 | Bushing | 4 |
| 28 | 68-8360 | Decal - H.O.C. LH | 1 |
| 29 | 74-0940 | Decal - H.O.C. RH | 1 |
| * | 13-3869 | Caster Wheel Assembly (Incl. Ref. #12-21) | 2 |

*Not Illustrated

TORO PART NUMBER INDEX

| Part No. | Description | Pg. No. | Ref. No. | Qty. | Part No. | Description | Pg. No. | Ref. No. | Qty. |
|----------|-----------------------------|---------|----------|------|----------|---------------------------|---------|----------|------|
| 770026A | Housing – Right Angle Drive | 4 | 11 | 1 | 67-7660 | Spindle Assembly | 2 | * | 3 |
| 772093 | Cover – RH | 4 | 8 | 1 | 67-7690 | Pulley – Spindle | 1 | 19 | 3 |
| 776153 | Shaft – Output | 4 | 10 | 1 | 68-8340 | Decal – Blade Bolt Torque | 1 | 31 | 1 |
| 776196 | Shaft – Input | 4 | 3 | 1 | 68-8360 | Decal – H.O.C. LH | 5 | 28 | 1 |
| 778101 | Gear – Miter | 4 | 4 | 1 | 68-8900 | Fork – Caster | 5 | 25 | 2 |
| 780024 | Bearing – Ball | 4 | 6 | 1 | 68-8920 | Wheel Half – Female | 5 | 20 | 2 |
| 780034 | Bearing – Ball | 4 | 2 | 1 | 68-8930 | Wheel Half – Male | 5 | 16 | 2 |
| 786029 | Retainer Assembly | 4 | 1 | 1 | 68-8940 | Hub Centered | 5 | 21 | 2 |
| 788018 | Ring – Snap | 4 | 5 | 1 | 68-8950 | Tube w/Valve | 5 | 18 | 2 |
| 788019 | Ring – Snap | 4 | 12 | 1 | 68-8960 | Tire | 5 | 19 | 2 |
| 788028 | Gasket – Cover | 4 | 9 | 1 | 68-8980 | Bushing – Spanner | 5 | 13 | 2 |
| 788029 | Seal – Oil | 4 | 13 | 1 | 71-2780 | Shaft – Spindle | 2 | 38 | 3 |
| 788030 | Gasket – Cap | 4 | 14 | 1 | 74-0340 | Cushion – Rubber | 5 | 8 | 2 |
| 788031 | Seal – Oil | 4 | 16 | 1 | 74-0940 | Decal – H.O.C. RH | 5 | 29 | 1 |
| 792025 | Screw – Round Hd. | 4 | 7 | 1 | 94-1291 | Bushing | 5 | 27 | 4 |
| 792026 | Screw – Hex. Hd. | 4 | 15 | 1 | 94-5830 | 44" Suspension Assembly | 5 | 2 | 1 |
| 794375 | Head Assembly RH | 4 | * | 1 | 94-6024 | 44" Deck Assembly | 1 | 33 | |
| 3-6781 | Washer – Thrust | 5 | 26 | 8 | 249-35 | Ring – Retaining | 3 | 18 | 4 |
| 7-0081 | Washer – Special | 1 | 12 | 1 | 249-36 | Stud – Wing | 3 | 19 | 4 |
| 7-4150 | Washer – Spindle | 1 | 17 | 3 | 251-257 | Bearing | 2 | 40 | 6 |
| 13-3869 | Caster Wheel Assembly | 5 | * | 2 | 283-55 | Pin – Clevis | 2 | 50 | 4 |
| 13-3899 | Deflector – Grass | 2 | 54 | 1 | 302-2 | Fitting – Grease | 1 | 14 | 3 |
| 19-1470 | Bolt – Shoulder | 1 | 20 | 1 | 302-5 | Fitting – Grease | 5 | 9 | 2 |
| 23-1120 | Washer | 1 | 25 | 1 | 302-14 | Cap – Vent | 3 | 1 | 1 |
| 29-4820 | Roller | 2 | 45 | 2 | 302-61 | Fitting – Grease | 5 | 23 | 2 |
| 29-5590 | Bracket – Deflector Pivot | 2 | 52 | 2 | 322-4 | Screw – Hex. Hd. | 3 | 12 | 4 |
| 36-1740 | Roller – Deck | 1 | 28 | 1 | 322-4 | Screw – Hex. Hd. | 1 | 27 | 13 |
| 40-6230 | Spring – Deflector | 1 | 5 | 2 | 322-5 | Screw – Hex. Hd. | 2 | 46 | 1 |
| 40-6400 | Shaft – Roller | 2 | 43 | 1 | 323-6 | Screw – Hex. Hd. | 3 | 20 | 2 |
| 43-8480 | Decal – Danger | 1 | 2 | 1 | 323-9 | Screw – Hex. Hd. | 5 | 3 | 4 |
| 46-8560 | Screw – Self Tapping | 3 | 10 | 5 | 325-19 | Screw – Hex. Hd. | 5 | 10 | 2 |
| 51-4060 | Bolt – Blade | 2 | 34 | 3 | 3211-8 | Screw – Hex. Hd. | 1 | 13 | 1 |
| 54-0010 | Blade | 2 | 37 | 3 | 3211-15 | Screw – Hex. Hd. | 2 | 53 | 2 |
| 54-1160 | Spring – Extension | 2 | 49 | 1 | 3217-6 | Nut – Hex. | 5 | 14 | 8 |
| 54-1180 | Anchor – Deck Spring | 2 | 47 | 1 | 3217-6 | Nut – Lock | 1 | 3 | 4 |
| 54-1360 | VBelt | 3 | 7 | 1 | 3229-3 | Bolt – Carriage | 1 | 32 | 2 |
| 54-1370 | VBelt | 1 | 18 | 1 | 3229-11 | Bolt – Carriage | 2 | 48 | 2 |
| 54-2220 | Cover – Deck LH | 3 | 9 | 1 | 3230-20 | Bolt – Carriage | 1 | 8 | 4 |
| 54-2240 | Cover – Deck | 3 | 2 | 1 | 3235-21 | Screw – Hex. Hd. | 5 | 6 | 4 |
| 54-2250 | Cover – Deck RH | 3 | 17 | 1 | 3245-9 | Screw – Set | 3 | 6 | 4 |
| 54-2320 | Gear Box Assembly | 4 | * | 1 | 3253-4 | Washer – Lock | 1 | 4 | 4 |
| 54-2320 | Gearbox – Deck Drive | 3 | 3 | 1 | 3253-4 | Washer – Lock | 5 | 15 | 8 |
| 54-2350 | Output Pulley Assembly | 3 | 11 | 1 | 3253-8 | Washer – Lock | 2 | 35 | 3 |
| 54-2360 | Input Pulley Assembly | 3 | 5 | 1 | 3256-6 | Washer – Thrust | 5 | 11 | 4 |
| 54-2760 | Decal – 44" | 3 | 16 | 1 | 3256-23 | Washer – Flat | 3 | 13 | 2 |
| 54-9220 | Decal – Danger | 2 | 55 | 1 | 3256-24 | Washer – Flat | 5 | 5 | 4 |
| 55-7030 | Bracket – Gearbox | 3 | 14 | 1 | 3257-30 | Key – Woodruff | 3 | 4 | 2 |
| 55-7040 | Cover – Deck | 3 | 8 | 1 | 3272-11 | Pin – Cotter | 2 | 44 | 1 |
| 55-7050 | Bracket – Cover RH | 1 | 16 | 1 | 3290-355 | Pin – Cotter | 2 | 51 | 4 |
| 55-7060 | Bracket – Cover LH | 1 | 30 | 1 | 3290-384 | Pin – Lynch | 5 | 1 | 2 |
| 55-7430 | Lever – Deck | 1 | 21 | 1 | 3296-5 | Nut – Lock | 1 | 1 | 3 |
| 55-8280 | Ring – Deck Support | 1 | 24 | 3 | 3296-16 | Nut – Lock | 1 | 29 | 4 |
| 57-0690 | Pin – Special | 2 | 42 | 1 | 32146-20 | Nut – Hex. | 1 | 15 | 3 |
| 62-4480 | Rod – Roller | 1 | 26 | 1 | 32152-1 | Nut – Hex. | 3 | 15 | 4 |
| 62-5570 | Bearing – Roller | 5 | 17 | 2 | 32152-1 | Nut – Hex. | 1 | 23 | 16 |
| 62-5580 | Bushing | 5 | 12 | 4 | 32152-2 | Nut – Hex. | 5 | 7 | 4 |
| 62-6980 | Shim – Carrier | 5 | 4 | 2 | 32152-2 | Nut – Lock | 3 | 21 | 2 |
| 65-5940 | Pulley – Idler | 1 | 11 | 1 | 32153-5 | Nut – Lock | 5 | 24 | 2 |
| 65-5950 | Bushing – Pulley | 1 | 10 | 1 | | | | | |
| 66-1340 | Decal – Danger | 1 | 7 | 2 | | | | | |
| 66-6380 | Decal – Deflector Missing | 1 | 6 | 1 | | | | | |
| 67-5360 | Decal – Cover Missing | 1 | 9 | 2 | | | | | |
| 67-7560 | Cup – Anti-Scalp | 2 | 36 | 3 | | | | | |
| 67-7570 | Spacer – Spindle | 2 | 39 | 3 | | | | | |
| 67-7580 | Spacer – Bearing | 1 | 22 | 3 | | | | | |
| 67-7590 | Housing – Spindle | 2 | 41 | 3 | | | | | |

Optional Equipment

| | |
|---------------------------|------------------|
| High Sail Blade (3 Req'd) | Part No. 55-4940 |
| Bagging System | Model No. 30751 |
| Blow Out Baffle Kit | Part No. 60-9030 |
| Leaf Mulcher Kit | Model No. 30752 |
| 44" Recycler Kit | Model No. 59220 |

