



Count on it.

Form No. 3315-683 Rev E

Parts Catalog

52in Blower Kit

Groundsmaster® 200

Model No. 30502—Serial No. 90001 and Up

Ordering Replacement Parts

To order replacement parts, please supply the part number, the quantity, and the description of each part desired.

Understanding Reference Numbers

Each identified part in an illustration has a reference number. The reference number for a part also appears in the parts list, along with other information about the part.

This catalog uses two special reference number formats, one to indicate parts in a service assembly and another to indicate the quantity of a given part in an illustration.

Service Assembly Reference Numbers

Parts in service assemblies have reference numbers in the form a:b. The a represents the reference number of the entire service assembly and the b represents a sequential number unique to each part within the service assembly.

For example, a wheel assembly might be identified by reference number 6, the tire by 6:1, the valve by 6:2, and the wheel by 6:3. When you order the assembly identified by reference number 6, you receive all parts identified by reference numbers 6:1, 6:2, and 6:3. However, you may also order any part individually. Reference numbers of this type appear in illustration and in parts lists.

Reference Numbers Indicating Quantity

In an illustration, if a reference number indicates more than one part, the reference number has the form nX y. The n represents the quantity of the part, the X is the multiplication symbol, and the y represents the reference number.

For example, in an illustration, the reference number 2X 37 means that two of the parts identified by reference number 37 are indicated.

List of Abbreviations

AR: as required
ASM: assembly
BBC: blade brake clutch
CARR: carriage
CCW: counter clock wise
CW: clockwise
DEG: degrees
ECM: electronic control module
EXT: external
FH: flat head
GA: gauge
HD: heavy-duty
HF: hex flange
HH: hex head
HHF: hex head flange
HHFTF: hex head flange thread forming
HJ: hex jam
HLH: hex lag head
HOC: height-of-cut

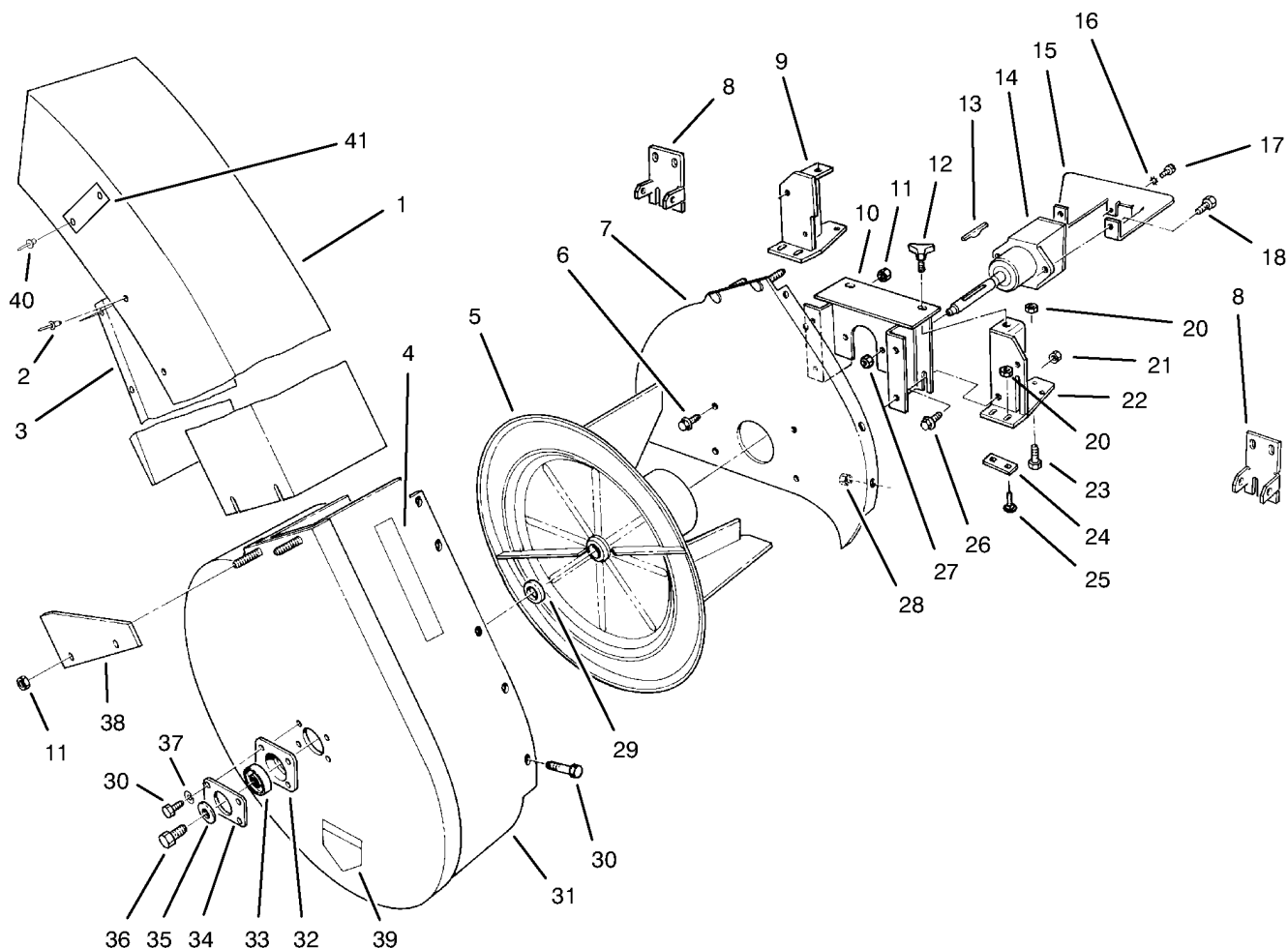
HSBH: hex socket button head
HSFH: hex socket flat head
HSH: hex socket head
HWH: hex washer head
HWHTF: hex washer head thread forming
HYD: hydraulic
LH: left hand
NI: nylon insert
NPTF: national pipe thread fine
PFH: phillips flat head
PPH: phillips pan head
PPHTF: phillips pan head thread forming
PRH: phillips round head
PTH: phillips truss head
PTO: power-take-off
RH: right hand
ROPS: roll-over protection system
RRB: rear roller brush

SFH: slotted fillister head
SHH: slotted hex head
SHWH: slotted hex washer head
SPH: slotted pan head
SQH: square head
SRH: slotted round head
STD: standard
TAP: self tapping
TTH: torx truss head

Contents

Blower Housing and Mount Assembly..... 4

Pulley and Bumper Assembly..... 5

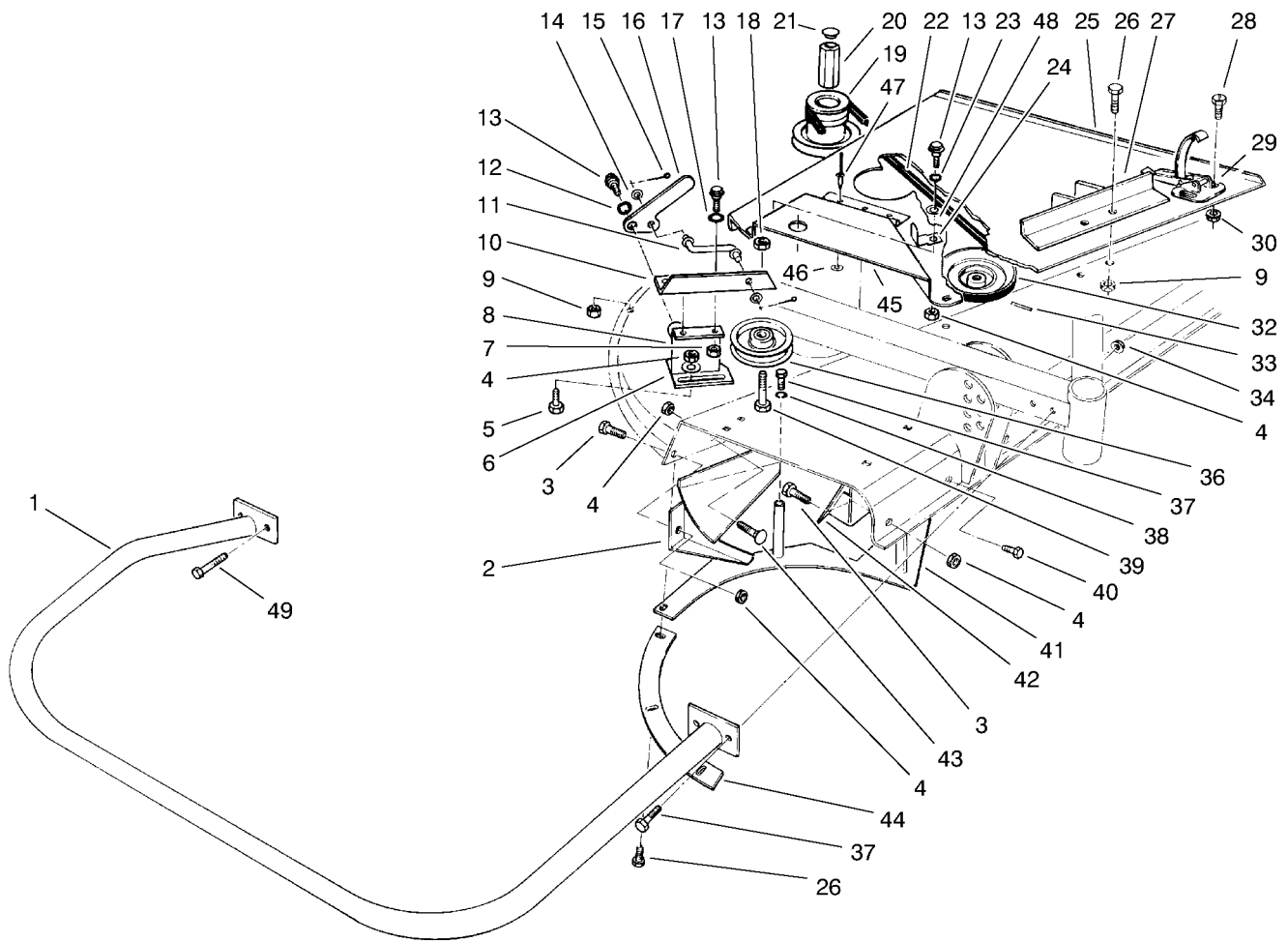


Blower Housing and Mount Assembly

Ref.	Part Number	Qty.	Description
1	94-2672	1	Assembly-Chute (Incl. Ref. #2, 3, 40 & 41)
2	3290-409	8	Rivet
3		1	Deflector-Chute ●
4	82-5510	1	Decal
4	93-7301	1	Decal-Warning
5	56-4780	1	Impeller
6	3234-14	4	Screw-HHF
7	59-5070	1	Mounting Plate
8	74-0910	2	Bracket-Pivot
9	59-5050	1	LH Bracket ASM
10	59-5140	1	Blower Mount
11	3296-29	8	Nut-Lock, NI
12	62-6520	2	Knob
13	3257-40	1	Key
14	53-4530-03	1	Gear Box ASM
15	59-5150	1	Cover-Gear Box
16	3255-17	2	Washer-Lock, EXT
17	3290-134	2	Screw
18	323-7	2	Screw-HH
20	32152-1	6	Nut-Lock, Cone
21	3218-3	2	Nut-Jam

Ref.	Part Number	Qty.	Description
22	59-5090	1	RH Bracket ASM
23	322-3	2	Screw-HH
24	44-5460	2	Plate-Bracket
25	3230-1	4	Bolt-CARR
26	3234-11	2	Screw-HHF
27	3296-44	2	Nut-Lock, NI
28	3296-42	9	Nut-Lock, NI
29	63-9710	1	Spacer-Bearing
30	321-3	13	Screw-HH
31	13-0269	1	Blower Housing ASM
32	37-6730	1	Cup-Bearing
33	38-7820	1	Bearing-Ball
34	63-9700	1	Cover-Plate
35	43-0940	1	Spacer-Hub, Blower
36	3235-22	1	Screw-HH, Lock
37	3253-3	4	Washer-Lock
38	43-0960	2	Bracket
39	54-9220	2	Decal-Danger
39	93-7316	2	Decal-Danger
40	3290-271	4	Rivet-Pop
41	80-4670	2	Plate - Warning
41	94-2556	2	Decal - Danger

● Not serviced separately



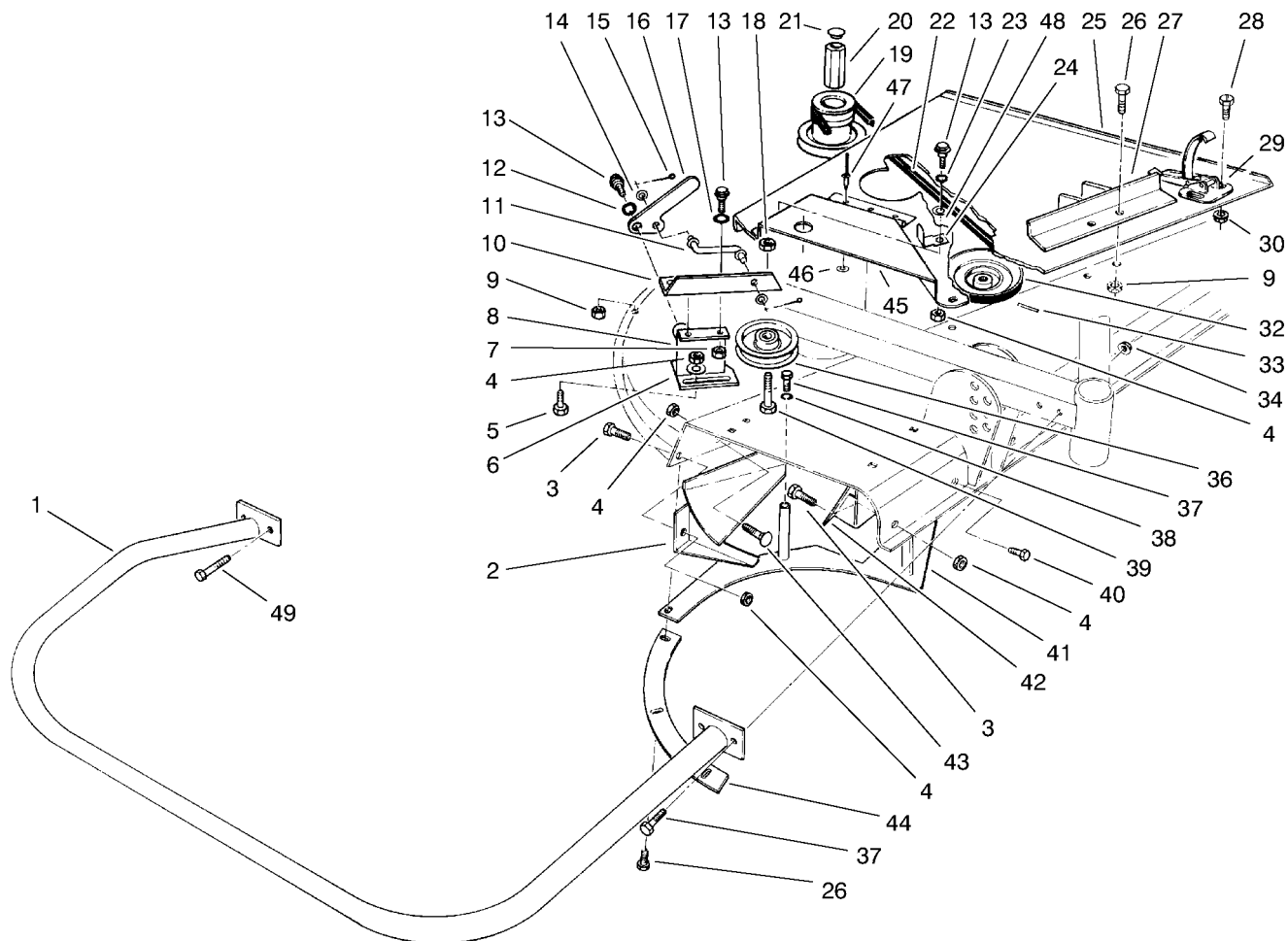
Pulley and Bumper Assembly

Ref.	Part Number	Qty.	Description
1	70-8050	1	Bumper
2	43-1060	1	Deflector Rear
3	322-4	2	Screw-HH
4	32152-1	10	Nut-Lock, Cone
5	322-3	3	Screw-HH
6	3256-3	3	Washer-Flat
7	3296-29	2	Nut-Lock, NI
8	59-4920	1	Bracket-Idler
9	32152-4	7	Nut-Lock, Cone
10	59-4930	1	Slide-Idler
11	59-4940	1	Idler Rod
12	3290-211	1	Washer-Spring
13	19-1470	4	Screw-Shoulder
14	3256-23	2	Washer-Flat
15	3272-6	2	Pin-Cotter
16	56-4900	1	Lever-Idler
17	23-1120	2	Washer
18	3296-44	1	Nut-Lock, NI
19	59-5170	1	Pulley (Splined)
20	59-5190	1	Nut-Pulley
21	59-5310	1	Nut-Cover
22	59-5270	1	V-Belt
23	3290-211	1	Washer-Spring
24	59-5290	1	Latch

Ref.	Part Number	Qty.	Description
25	77-0180	1	Cover Assembly RH (Incl. Ref. #4, 13, 23, 24, 28-30 & 45-48)
26	321-4	7	Screw-HH
27	77-0160	1	Bracket-Spring
28	3290-321	4	Screw-HWH
29	249-21	2	Clamp-Slotted
30	32128-17	4	Nut-Lock, Flange
32	56-4810	1	Pulley-Gear Box
33	32121-8	1	Pin-Roll, Slotted
34	32128-43	2	Nut-Flange
36	56-4920	1	Pulley-Idler
37	323-6	6	Screw-HH
38	3253-21	4	Washer-Lock
39	323-7	1	Screw-HH
40	322-2	2	Screw-HH
41	44-7770	1	Rear Shelf
42	92-6297	1	Deflector-Front
43	3230-1	2	Bolt-CARR
44	44-7780	1	Shelf-RH
45	77-0130	1	Cover-Pulley
46	3269-10	3	Washer-Back
47	3290-55	3	Rivet-Pop
48	3256-25	1	Washer-Flat
49	325-6	2	Screw-HH

● Not illustrated

■ Required on some units for mounting Bumper to Carrier Frame



Pulley and Bumper Assembly (continued)

Ref.	Part Number	Qty.	Description
	66-1340	1	Decal-Danger, Thrown Object ●
	93-7824	1	Decal-Danger ●

Ref.	Part Number	Qty.	Description
	44-5480	1	Blade-High Sail ●
	32128-23	2	Nut-HF ●■

● Not illustrated

■ Required on some units for mounting Bumper to Carrier Frame

Notes:



Count on it.