



Bagger Finishing Kit

TITAN ZX6000 Series Zero-Turn-Radius Riding Mower

Model No. 119-3454

Installation Instructions



This kit requires the Bagger Kit to complete installation. Contact your Authorized Service Dealer or the manufacturer Customer Service to obtain the necessary parts. For more information, visit us at www.Toro.com.

Safety

Safety and Instructional Decals



Safety decals and instructions are easily visible to the operator and are located near any area of potential danger. Replace any decal that is damaged or lost.



110-6691

1. Thrown object hazard—keep bystanders a safe distance from the machine.
2. Thrown object hazard, mower—do not operate without the deflector, discharge cover, or grass collection system in place.
3. Cutting/dismemberment of hand or foot—stay away from moving parts.

Installation

1

Installing the Bagger Frame

Parts needed for this procedure:

1	Bagger frame assembly (60 inch deck)
---	--------------------------------------

Procedure

This Bagger Finishing Kit contains a new Bagger Frame Assembly which is used for units with 60 inch decks only. The Bagger Kit comes with a Bagger Frame Assembly that should be discarded and replaced with the one included with this Bagger Finishing Kit.

Refer to the Bagger Kit installation instructions for the procedure to install the bagger frame assembly.

2

Installing the Blades

Parts needed for this procedure:

3	Hi-Lift blade
---	---------------

Procedure

1. Remove the existing mower blades installed on your deck. Refer to the Removing the Blades section in the *Operator's Manual* for more information.
2. Install the Hi-Lift mower blades located in loose parts. Refer to the Installing the Blades section in the *Operator's Manual* for more information.

3

Installing the Chute

Parts needed for this procedure:

1	Angled cut off baffle
1	Curved baffle
2	Lock nut (5/16 inch)
1	Hand knob
1	Washer
1	Chute

Procedure

⚠ WARNING

An uncovered discharge opening could allow the lawn mower to throw objects in the operator or bystander's direction and result in serious injury. Also, contact with the blade could occur.

Never operate the lawn mower unless you install a cover plate, a mulch plate, or a grass chute and catcher.

Never operate the mower with the discharge opening uncovered. A discharge cover, mulch cover or bagging chute must always be used when the mower deck is operated.

1. Remove fasteners securing the deflector assembly to the deck (Figure 1). Retain all fasteners.

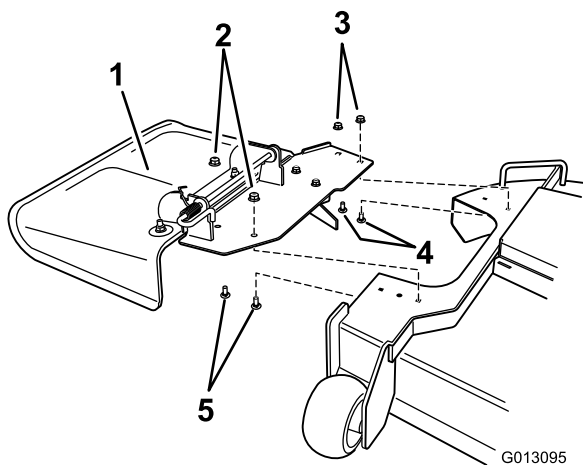


Figure 1

- | | |
|--------------------------------|-------------------------------------|
| 1. Deflector assembly | 4. Carriage bolt (existing), reuse |
| 2. Lock nut (existing), retain | 5. Carriage bolt (existing), retain |
| 3. Lock nut (existing), reuse | |

2. Remove the deflector assembly. Retain all parts to convert the deck to side discharge.
3. Locate and install the angled cut off baffle to the deck at the rear holes in the mower deck. Use the existing fasteners from that location to secure the angled cut off baffle to the deck.

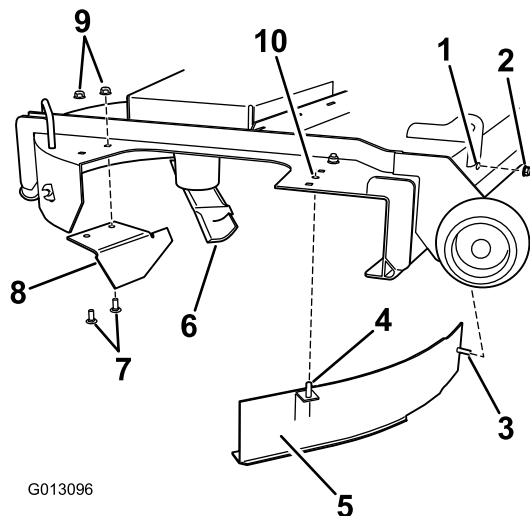


Figure 2

- | | |
|-----------------------------------|--|
| 1. Hole in front wall of the deck | 6. High lift blade |
| 2. Lock nut | 7. Carriage bolt (existing), reuse |
| 3. Horizontal post, curved baffle | 8. Angled cut off baffle |
| 4. Vertical post, curved baffle | 9. Lock nut (existing), reuse |
| 5. Curved baffle | 10. Center, forward hole in mower deck |

4. Install the curved baffle to deck. Align the vertical post in the curved baffle with center, forward hole in the deck and the horizontal post with the hole in the

front wall of the mower deck. Secure horizontal post to the front wall of the deck using a lock nut.

5. Install the chute to the deck. Make sure the opening in top of the chute aligns with the exposed post on the deck top and the forward vertical plate mates with the folded metal bracket of the chute.

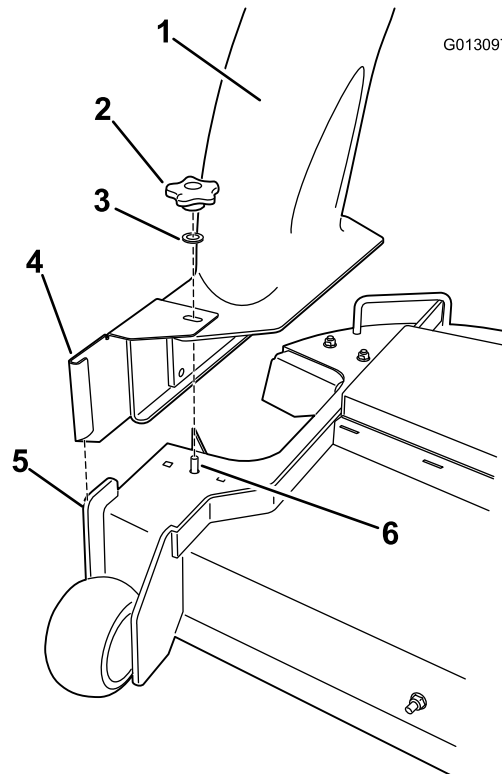


Figure 3

- | | |
|--------------------|--|
| 1. Discharge chute | 4. Folded metal bracket, chute |
| 2. Hand knob | 5. Forward vertical plate, deck |
| 3. Washer | 6. Exposed post in the deck, curved baffle |

6. Install a washer and hand knob over the post coming through the chute top. Hand tighten to secure the chute to the deck.
7. Hook the flexible latch on the chute to the retaining clasp welded to the side wall of the deck.

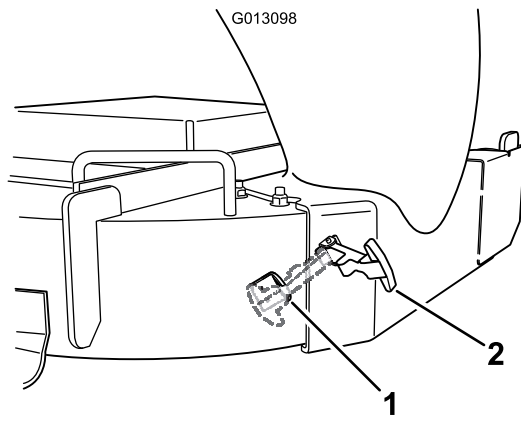


Figure 4

1. Retaining clasp 2. Flexible latch

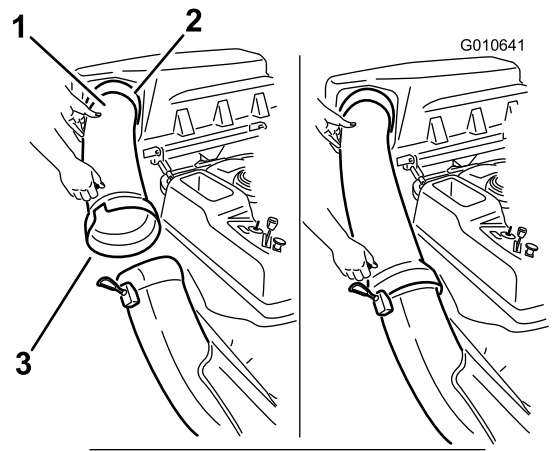


Figure 5

1. Discharge tube, curved end 4. Peg
2. Opening in bagger top 5. Rubber strap
3. Discharge tube, flared end

4

Connecting with the Discharge Tube

No Parts Required

Procedure

1. Slide the curved end of the discharge tube (supplied with the bagger kit) into the opening in the bagger top (Figure 5).

2. Slide the flared end of the discharge tube over the end of the chute. Move the rubber retaining strap on the chute snaps over the peg on the discharge tube to secure it (Figure 5).

Maintenance

Removing the Finishing Kit

Whenever the bagger kit is removed, the finishing kit should be removed using the following procedure. Retain all parts for future installation.

1. Remove the discharge tube from the machine and install the discharge cover.

⚠ WARNING

An uncovered discharge opening could allow the lawn mower to throw objects in the operator or bystander's direction and result in serious injury. Also, contact with the blade could occur.

Never operate the lawn mower unless you install a cover plate, a mulch plate, or a grass chute and catcher.

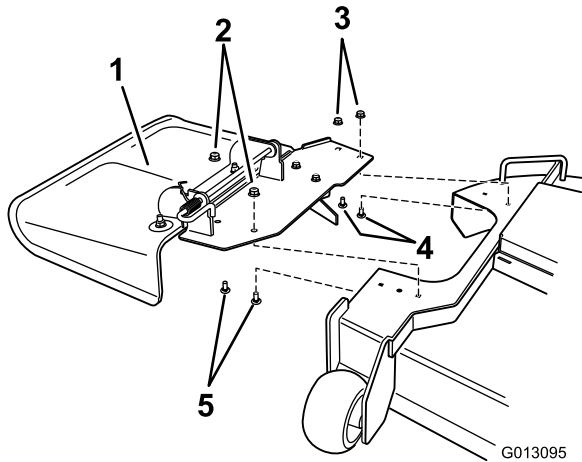


Figure 6

- | | |
|--------------------------------|-------------------------------------|
| 1. Deflector assembly | 4. Carriage bolt (existing), reuse |
| 2. Lock nut (existing), retain | 5. Carriage bolt (existing), retain |
| 3. Lock nut (existing), reuse | |

-
2. Replace the mower blades.
 - Remove the Hi-Lift mower blades installed on your deck. Refer to the Removing the Blades section in the *Operator's Manual* for more information.
 - Install the standard mower blades removed previously. Refer to the Installing the Blades section in the *Operator's Manual* for more information.

Notes:

Notes:



Count on it.