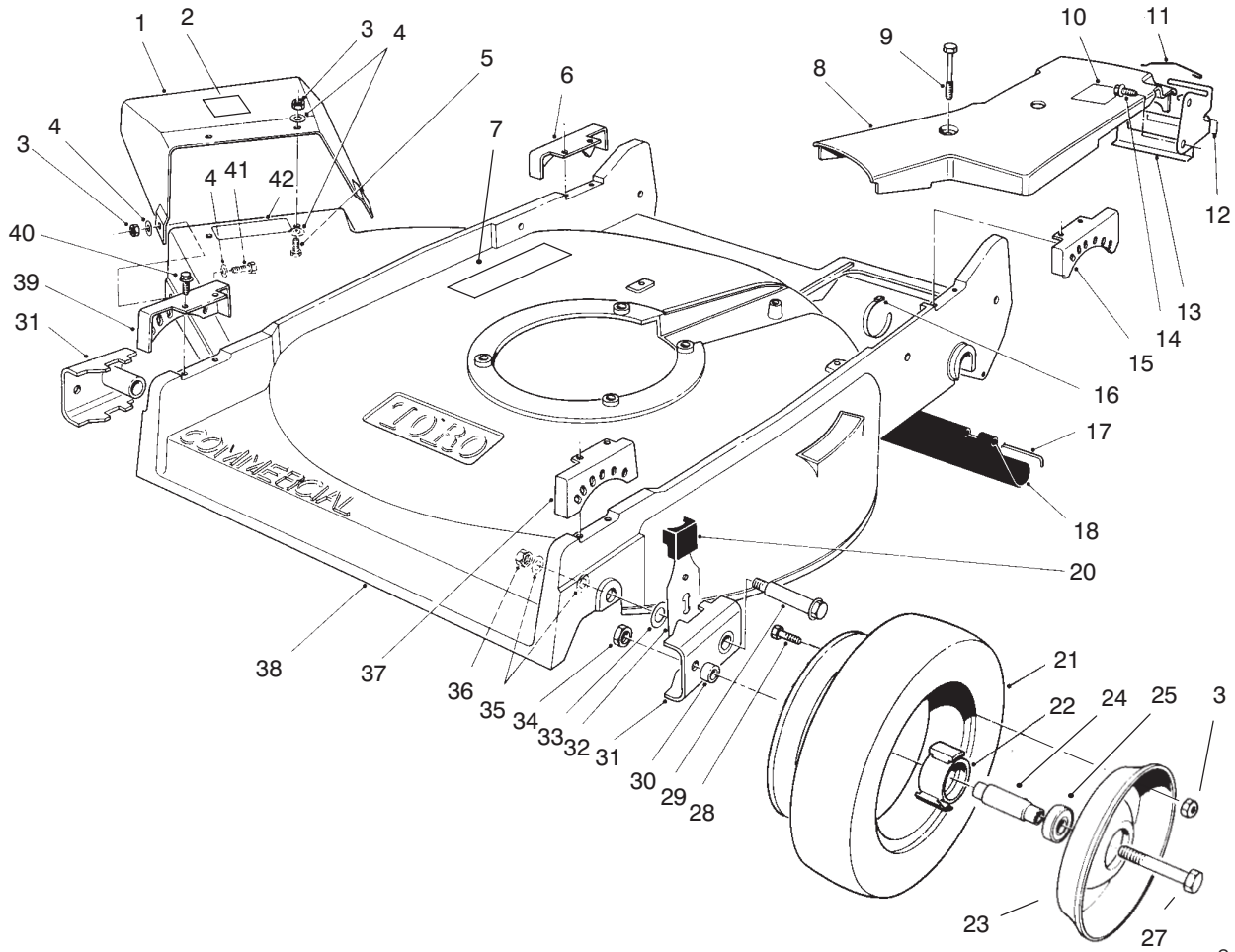




MODEL NO. 22701B-6900001 & UP
 MODEL NO. 22701-7900001 & UP

PARTS
 CATALOG

21" COMMERCIAL
 Side Discharge Mower

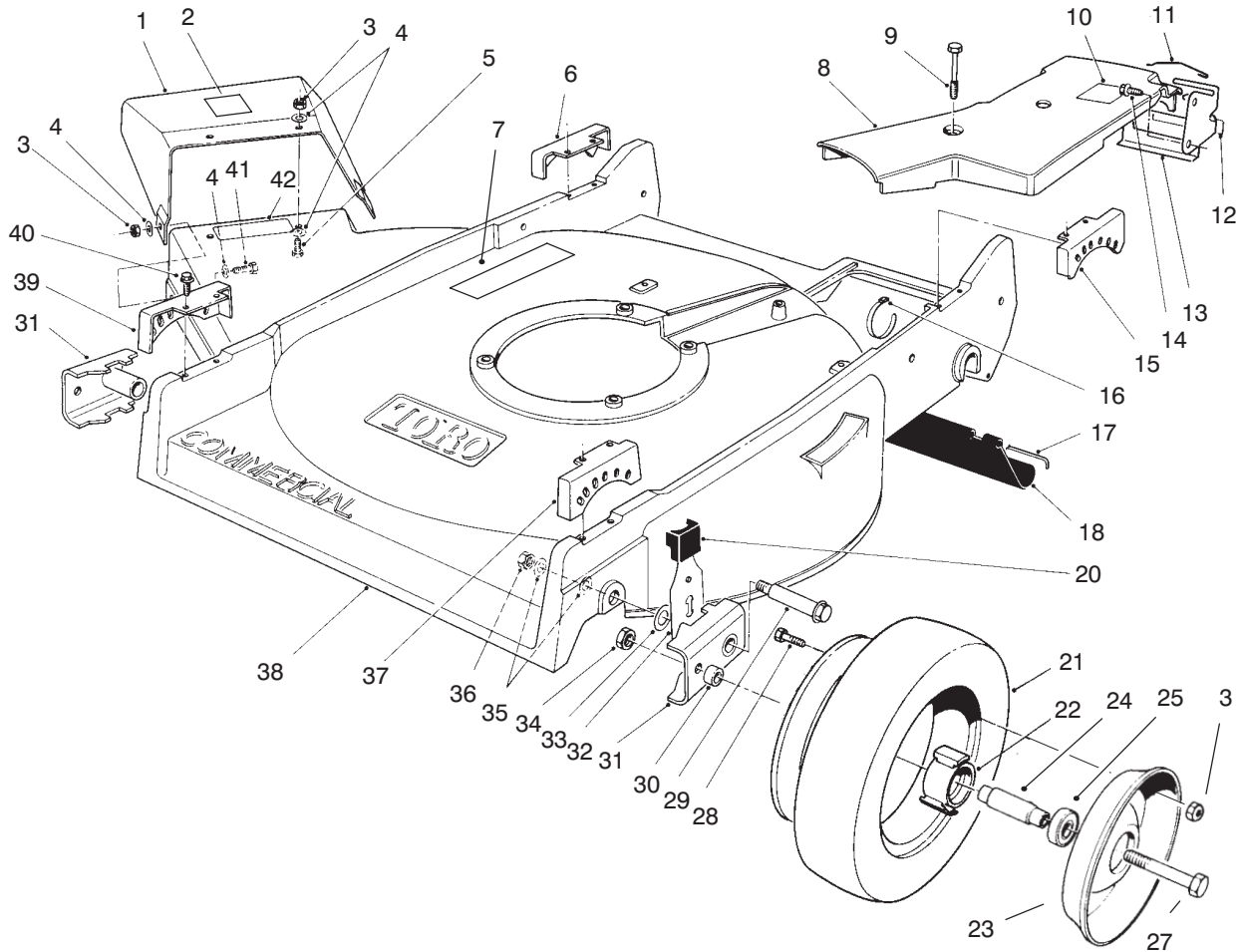


C-2199A

HOUSING ASSEMBLY

Ref. No.	Part No.	Description	No. Used
1	66-7040	Assembly - Deflector (Incl. Ref. #2)	1
2	93-6654	Decal - Danger	1
3	3296-42	Nut - Lock	11
4	3256-22	Washer - Flat	6
5	321-5	Screw - Cap Hex. Hd.	2
6	49-8750	Quadrant - Rear, R.H.	1
7	93-6657	Decal - Danger	1
8	74-1770	Cover - Belt	1
9	37-7260	Screw - Special	2
10	93-6664	Label - Grease	1
11	46-7030	Retainer - Cable	1
12	74-1970	Decal - Traction Drive	1
13	74-1741	Bracket - Adj. Traction	1
14	32144-70	Screw - Thread Forming	1
15	49-8740	Quadrant - Rear L.H.	1
16	3290-378	Tie - Cable	1
17	33-3208	Rod - Shield	1

Ref. No.	Part No.	Description	No. Used
18	44-0580	Shield - Rear, Safety	1
20	25-7740	Knob - Arm	2
21	53-7740	Tire	2
22	52-2410	Hub	2
23	53-7780	Plate - Wheel Half	4
24	52-2440	Spacer - Bearing	2
25	52-2450	Bearing - Wheel	4
27	323-12	Screw - Cap Hex. Hd.	2
28	321-2	Screw - Cap Hex. Hd.	8
29	27-6232	Screw - Pivot	2
30	52-2480	Spacer - Wheel	2
31	61-8300	Assembly - Arm, Pivot	2
32	66-7560	Assy. - Spring Arm, Front	2
33	257-3	Washer - Pivot	2
34	32152-2	Nut - Lock	2
35	40-1940	Washer - Hardened	4
36	3296-6	Nut - Lock	2
37	49-8760	Quadrant - Front, L.H.	1



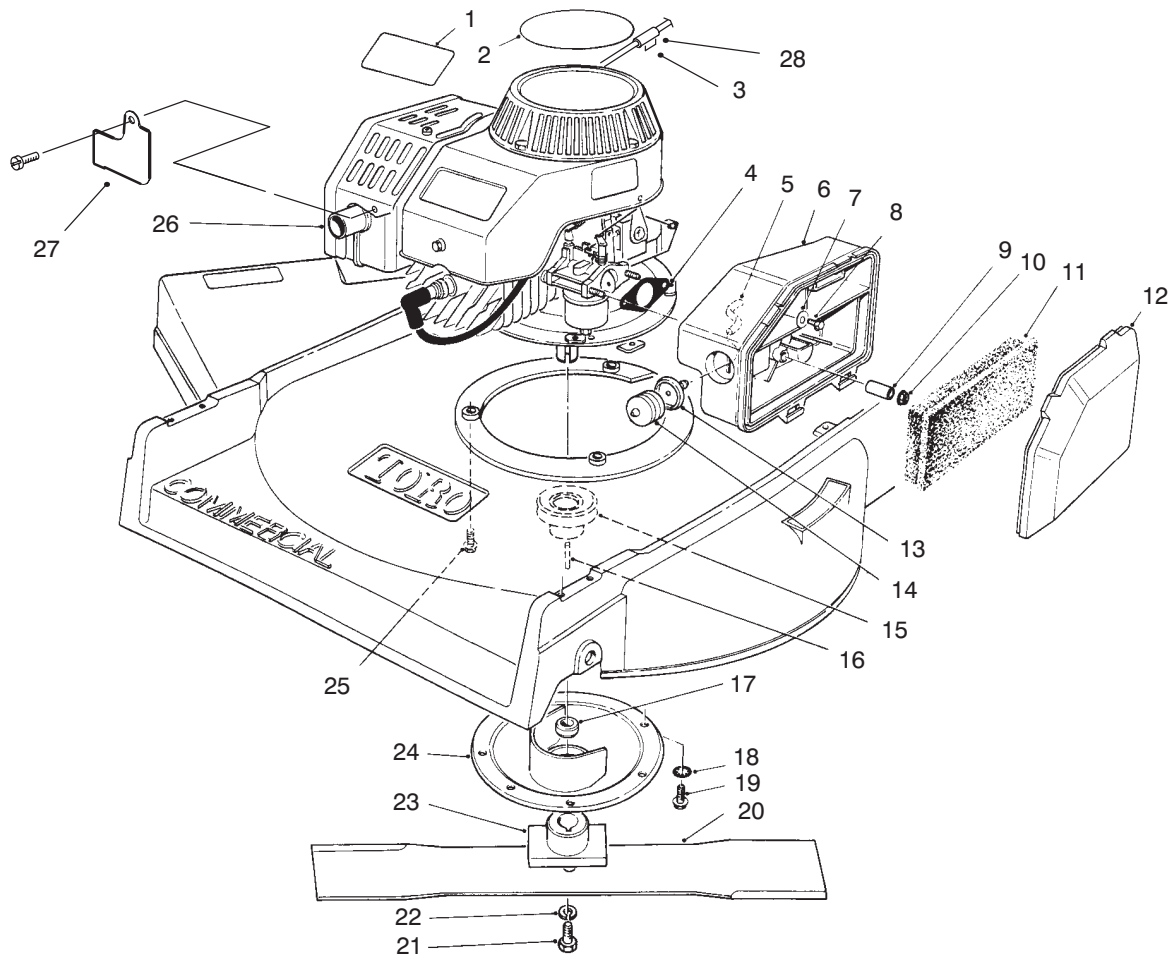
C-2199A

HOUSING ASSEMBLY (Continued)

Ref. No.	Part No.	Description	No. Used
38	16-9119	Housing – Commercial (Incl. Ref. #7 & 42)	1
39	49-8770	Quadrant – Front, R.H.	1
40	49-2040	Screw – Thread Forming	8

Ref. No.	Part No.	Description	No. Used
41	321-7	Screw – Cap Hex. Hd.	1
42	93-6667	Decal – Warning	1
*	53-7720	Tire & Wheel Assembly (Incl. Ref. #3, 21-25, & 28)	2

*Not Illustrated

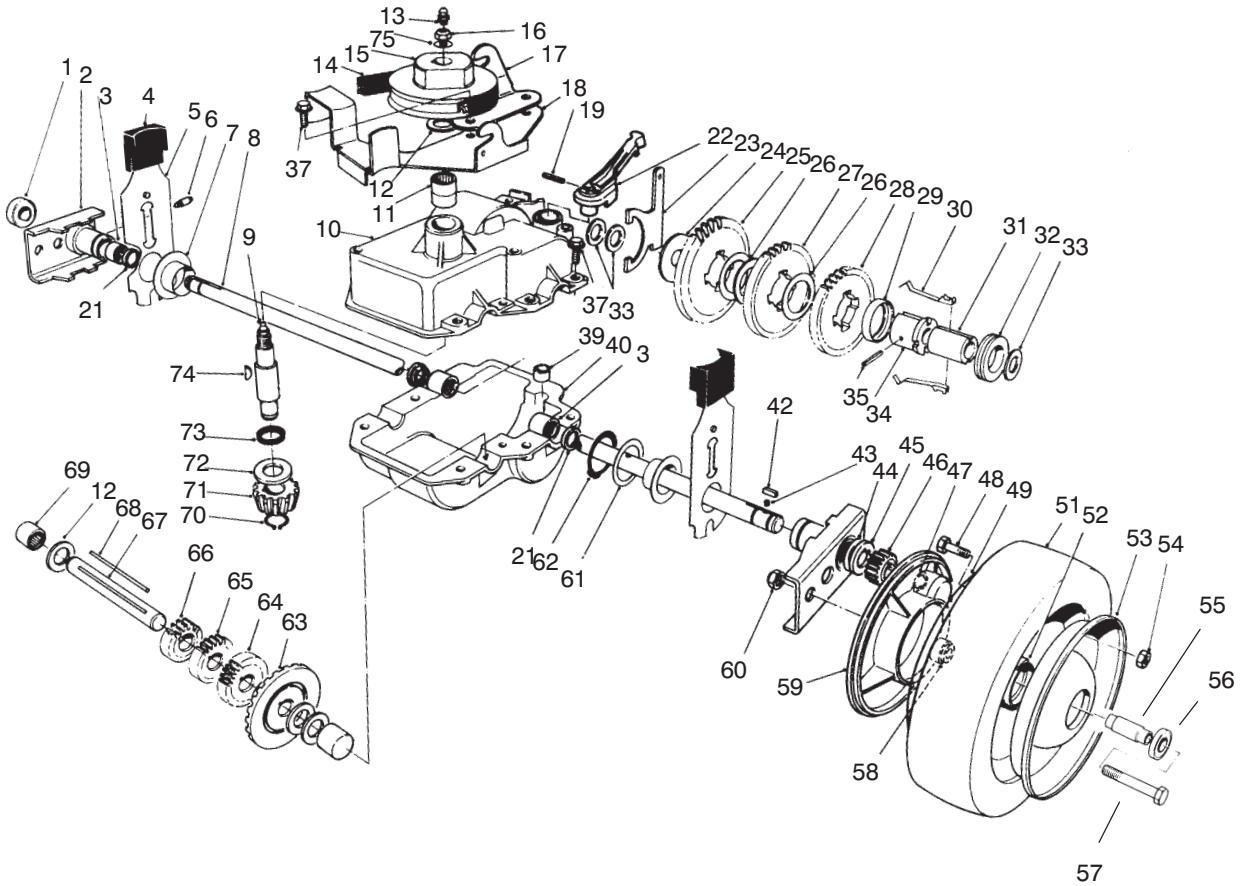


C-2200A

ENGINE ASSEMBLY

Ref. No.	Part No.	Description	No. Used	Ref. No.	Part No.	Description	No. Used
1	71-1260	Decal - Pro Line	1	15	46-7910	Pulley - Driver	1
2	77-0040	Decal - Recoil	1	16	27-6300	Key - Square	1
†3		Staple	1	17	52-2194	Spacer - Retainer, Blade	1
4	81-0090	Gasket	1	18	3254-6	Washer - Internal Tooth	3
5	44-3172	Hose - Primer	1	19	32144-70	Screw - Thread Forming	4
6	63-9330	Body - Air Cleaner	1	20	26-5790	Blade	1
7	3256-16	Washer	1	21	26-0670	Screw - Blade	1
8	51-2690	Screw - Hex. Flange Hd.	1	22	3253-22	Washer - Lock	1
9	62-3980	Sleeve	2	23	66-7190	Retainer - Blade	1
10	50-7180	Nut - Lock	2	24	65-5860	Protector - Crankshaft	1
11	63-9380	Filter - Foam	1	25	66-9300	Screw - Hex. Flange Hd.	4
12	63-9340	Cover - Air Cleaner	1	26	61-8062	Engine - Complete	1
13	44-2750	Body - Primer	1	27	93-7661	Guard - Muffler Extension	1
14	66-7460	Bulb - Primer	1	28	81-3980	Stop - Rope	1

† Obtain Locally

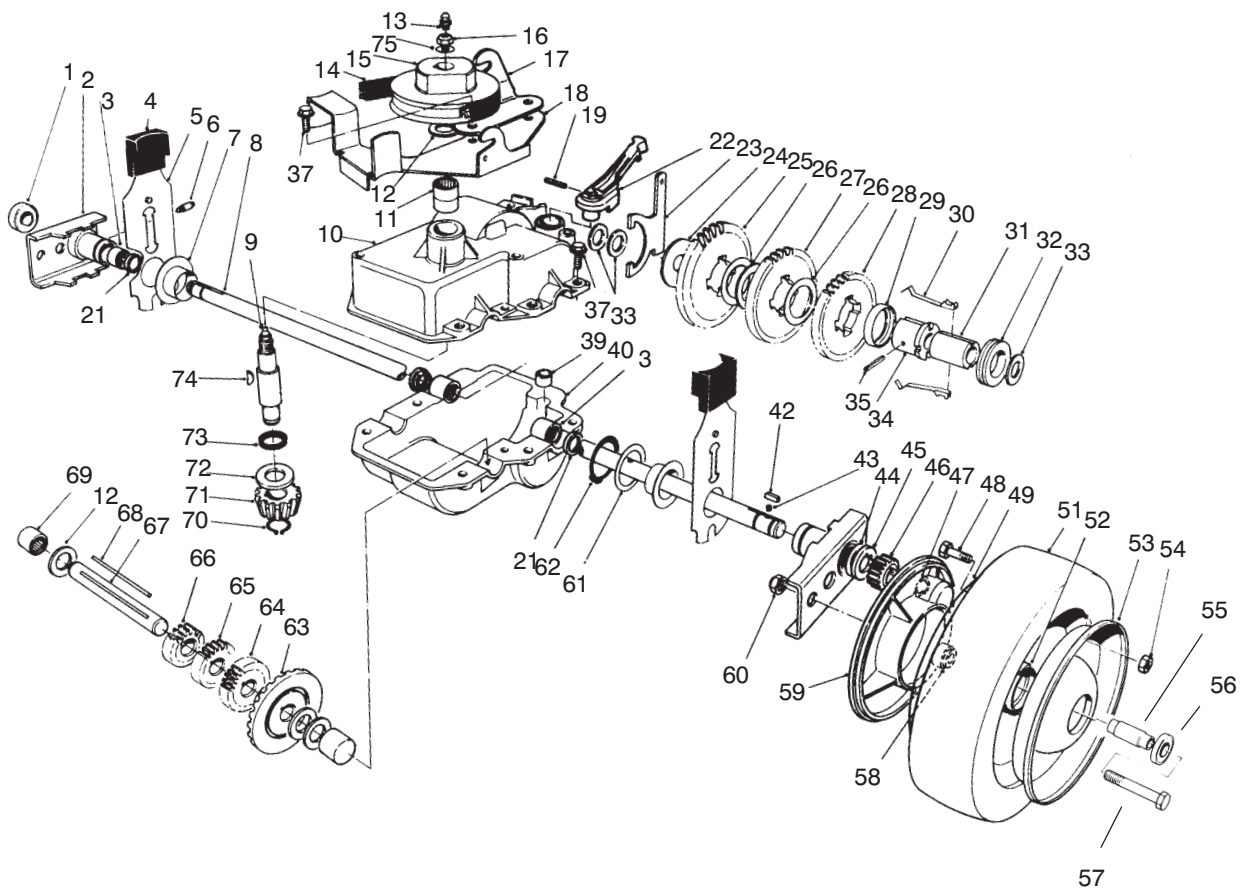


T-0678A

GEAR CASE ASSEMBLY

Ref. No.	Part No.	Description	No. Used
1	52-2450	Bearing	2
2	74-1851	Pivot Arm Assembly (Incl. Ref. #1, 3, 6 & 21)	2
3	48-2060	Bearing - Needle	4
4	25-7740	Knob - Arm	2
5	66-7561	Spring Arm Assy. - Rear	2
6	92-6316	Fitting - Grease	2
7	48-2170	Cap - End	2
8	74-1890	Shaft - Output	1
9	13-5149	Shaft - Input (Incl Ref. #13)	1
10	13-9739	Upper Case Assembly (Incl. Ref. #11 & 73)	1
11	47-7270	Bearing - Needle	2
12	36-4792	Washer - Thrust	4
13	302-63	Fitting - Grease	1
14	36-8070	V-Belt	1
15	39-6740	Pulley	1
16	3296-5	Nut - Lock	1
17	74-1750	Bracket - Traction, Engage	1
18	49-8461	Bracket - Guide, Belt	1
19	32121-99	Pin - Roll	1
21	47-6730	Seal	4

Ref. No.	Part No.	Description	No. Used
22	74-1960	Lever - Shift	1
23	60-8870	Yoke - Shift	1
24	29-9690	Washer - Flat	1
25	46-3560	Gear - 52T	1
26	36-4770	Spacer - Gear	3
27	29-9271	Gear - 42T	1
28	42-4740	Gear - 38T	1
29	55-8020	Retainer - Key	1
30	29-9330	Key - Shift	2
31	39-6720	Sleeve	1
32	29-9340	Collar - Shift	1
33	36-4780	Washer - Flat	3
34	55-8010	Sleeve - Gear	1
35	3285-19	Pin - Groove	1
37	49-2040	Screw - Self Tapping	8
39	29-9570	Bushing - Yoke	1
40	74-1920	Case - Lower	1
42	612066	Key	2
43	39-9650	Spring	2
44	49-7700	Washer - Thrust, Keyed	2
45	62-3830	Washer - Thrust, Keyed	2
46	39-9160	Pinion	2
47	32151-68	Ring - Klip	4

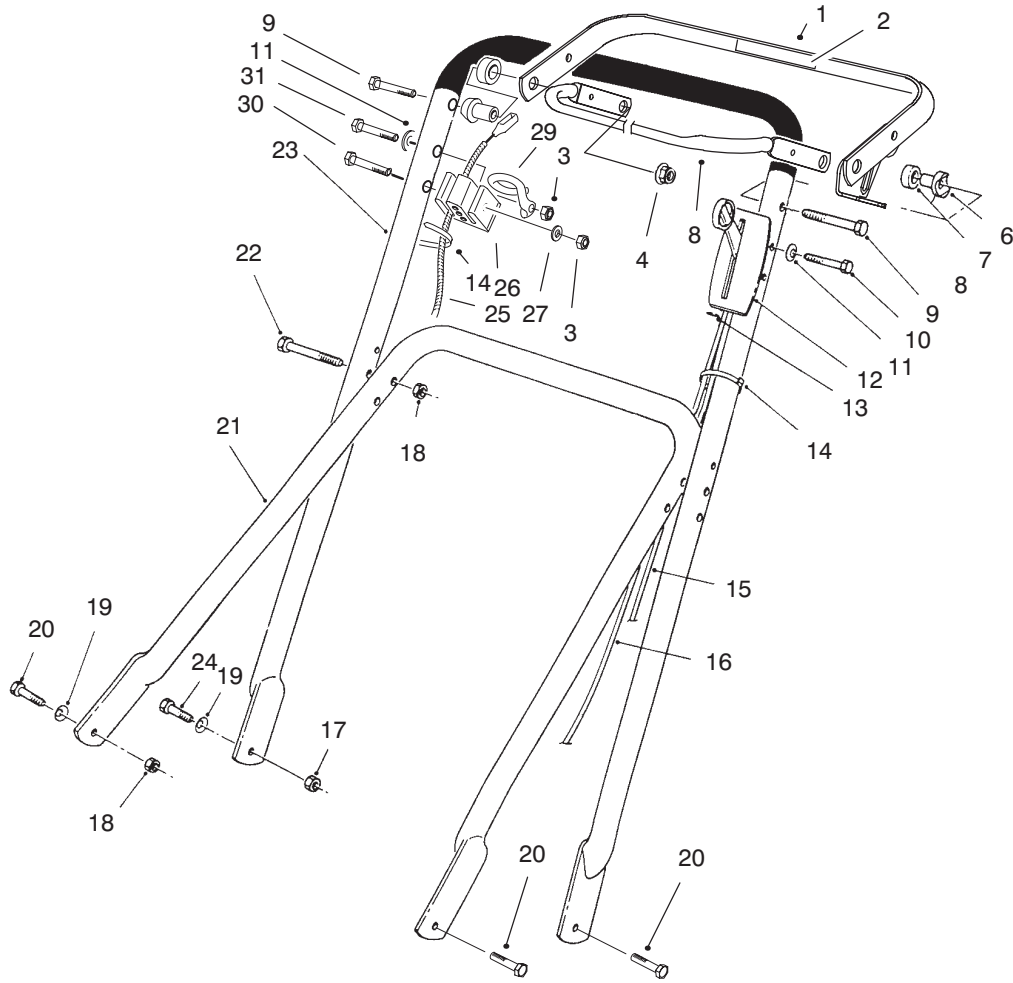


T-0678A

GEAR CASE ASSEMBLY (CONTINUED)

Ref. No.	Part No.	Description	No. Used	Ref. No.	Part No.	Description	No. Used
48	321-2	Screw - Cap, Hex. Hd.	8	66	46-3540	Gear - 12T	1
49	92-4957	Wheel - Half & Gear	2	67	53-7950	Shaft - Intermediate	1
51	53-7740	Tire	2	68	39-7842	Key - Square	1
52	52-2410	Hub	2	69	252-103	Bearing - Closed	2
53	53-7780	Plate - Wheel Half	2	70	32151-57	Ring - Retaining	1
54	3296-42	Nut - Lock	8	71	39-6660	Pinion - Bevel	1
55	52-2440	Spacer - Bearing	2	72	47-2910	Washer - Thrust	1
56	52-2450	Bearing - Wheel	4	73	47-7260	Seal	1
57	323-13	Screw - Cap, Hex. Hd.	2	74	3257-1	Key - Woodruff	2
58	74-1650	Spacer - Wheel	2	75	3256-45	Washer - Flat	1
59	74-1640	Cover - Wheel	2	*	74-1861	Gear Case Assembly (Incl. Ref. #3, 8-13, 15-18, 21, 23-40 & 63-74)	1
60	32152-2	Nut - Lock	2	*	74-1720	Wheel & Tire Assembly (Incl. Ref. #48-49 & 51-56)	2
61	74-1810	Washer	2				
62	32151-36	Ring - Retaining	2				
63	74-1760	Gear - Bevel	1				
64	39-6650	Gear - 18T	1				
65	46-3550	Gear - 14T	1				

*Not Illustrated

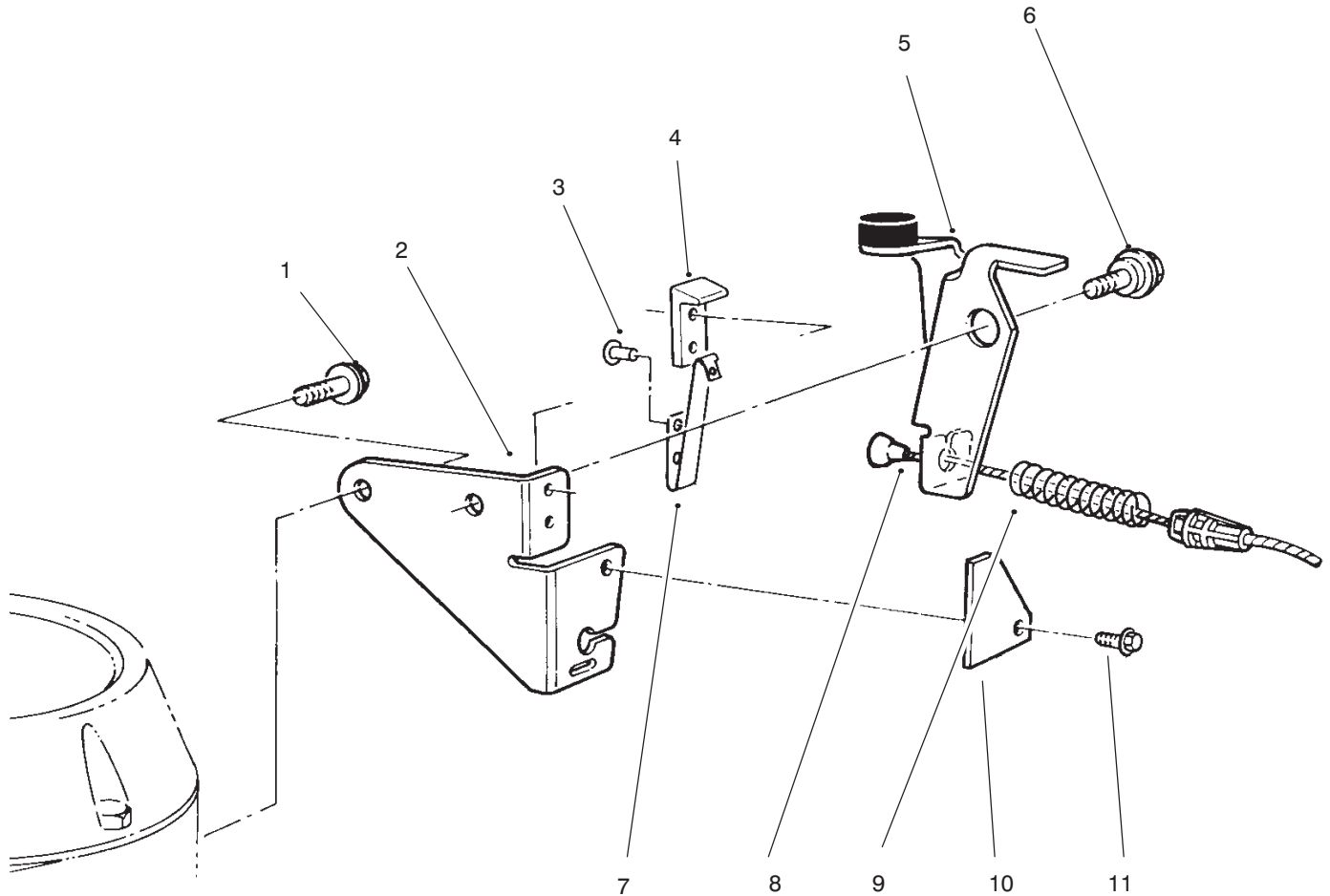


C-2424

HANDLE ASSEMBLY

Ref. No.	Part No.	Description	No. Used
1	94-4371	Bail - Traction	1
2	94-6046	Decal - Control, Traction	1
3	3296-42	Nut - Lock	2
4	3296-58	Nut - Lock	2
6	49-1631	Support - Spacer	2
7	256-276	Spacer - Plastic	2
8	94-4370	Bail - Brake	1
9	322-12	Screw - Cap Hex. Hd.	2
10	321-13	Screw - Cap Hex. Hd.	2
11	3-7501	Washer - Curved	4
12	82-9952	Assy. - Bracket, Throttle	1
13	32151-86	E-Ring	2
14	3290-378	Tie - Cable	3
15	74-1791	Cable - Traction	1
16	70-1061	Cable - Throttle	1

Ref. No.	Part No.	Description	No. Used
17	3296-47	Nut - Lock	2
18	3296-29	Nut - Lock	4
19	3290-456	Washer - Belleville	4
20	322-6	Screw - Hex Hd. Cap	3
21	66-6150	Handle - Lower	1
22	322-12	Screw - Cap Hex. Hd.	2
23	94-4372	Handle - Upper	1
24	322-7	Screw - Cap Hex. Hd.	1
25	94-5829	Cable - Brake	1
26	46-6980	Support - Cable	1
27	3256-22	Washer - flat	1
29	46-8081	Guide - Rope	1
30	321-15	Screw - Hex Hd. Cap	1
31	321-9	Screw - Hex Hd. Cap	1



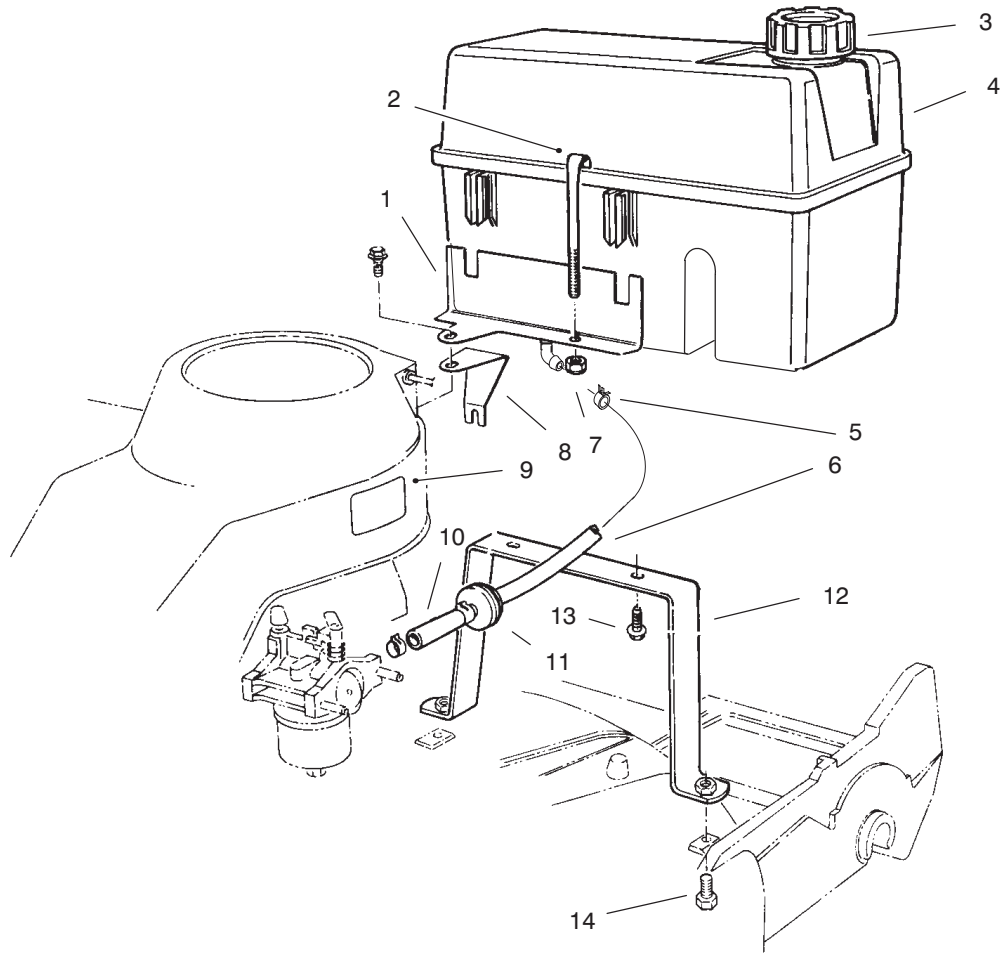
C-0531

BRAKE ASSEMBLY

Ref. No.	Part No.	Description	No. Used
1	32144-70	Screw	1
2	84-7820	Plate - Mounting	1
3	3290-459	Rivet	2
4	77-5260	Strap - Insulation	1
5	66-5380	Brake Plate Assembly	1
6	92-9698	Screw - Shoulder	1
7	60-9010	Strap - Ground	1

Ref. No.	Part No.	Description	No. Used
8	94-5829	Cable - Brake	1
9	66-5370	Spring - Compression	1
10	53-4690	Stop - Ground Strap	1
11	32144-112	Screw - Self Tapping	1
*	14-6009	Mounting Plate Assembly (Incl. Ref. #2-4, & 7)	1

*Not Illustrated

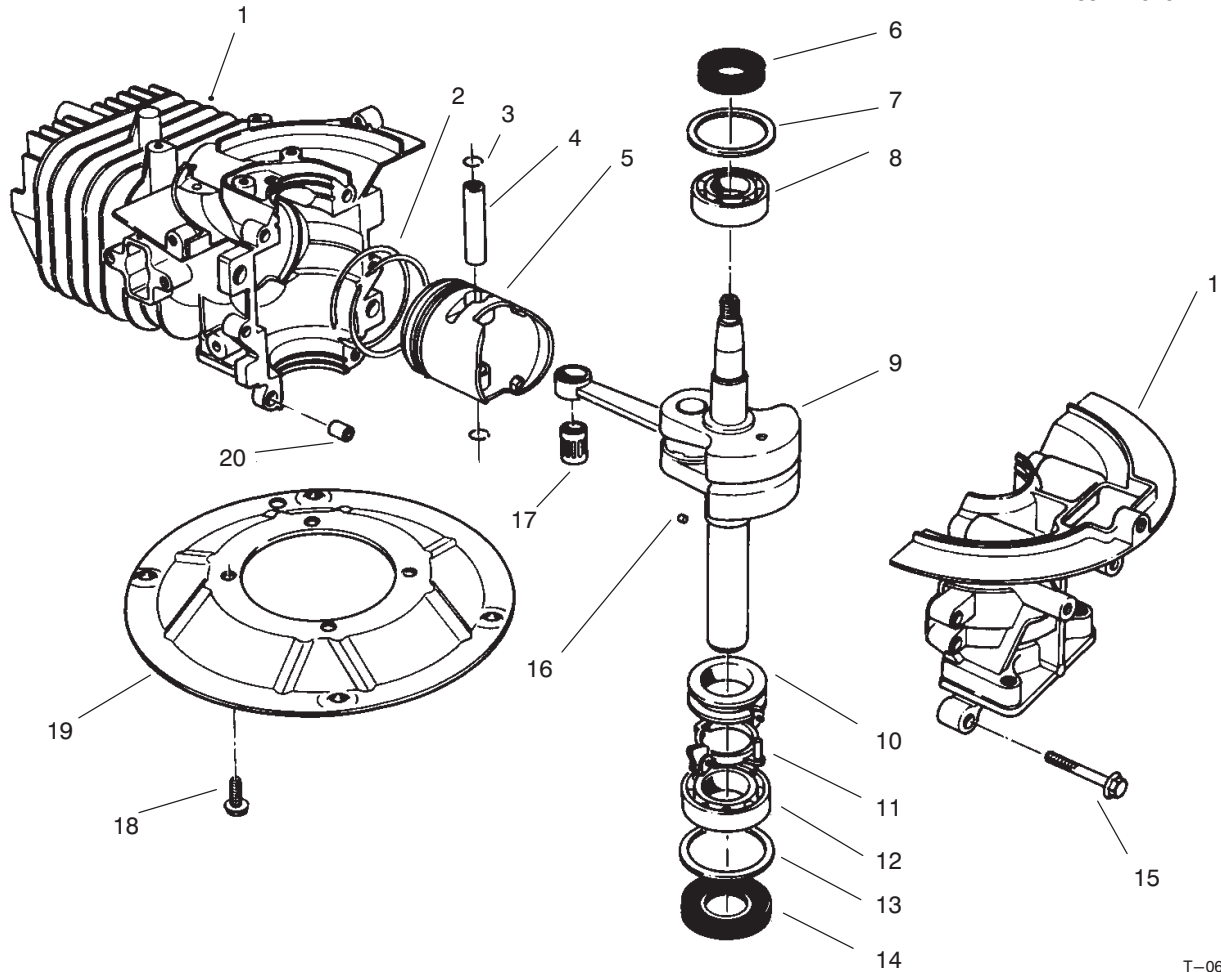


C-1019A

GAS TANK ASSEMBLY

Ref. No.	Part No.	Description	No. Used
1	74-2110	Bracket - Tank	1
2	77-2840	Retainer - Tank, Fuel	1
3	93-7199	Cap - Gas	1
4	94-5827	Tank - Gas	1
5	2412-95	Clamp - Fuel Line	4
6	68-3633	Hose - Fuel	1
7	3296-42	Nut - Lock	1

Ref. No.	Part No.	Description	No. Used
8	77-0520	Support - Bracket	1
9	93-6659	Decal - Fuel	1
10	51-3211	Hose - Fuel	1
11	71-9280	Filter - Fuel	1
12	93-7021	Mount - Tank, Bottom	1
13	46-8091	Screw - Hex. Washer Hd.	2
14	322-4	Screw - Hex Hd. Cap	2



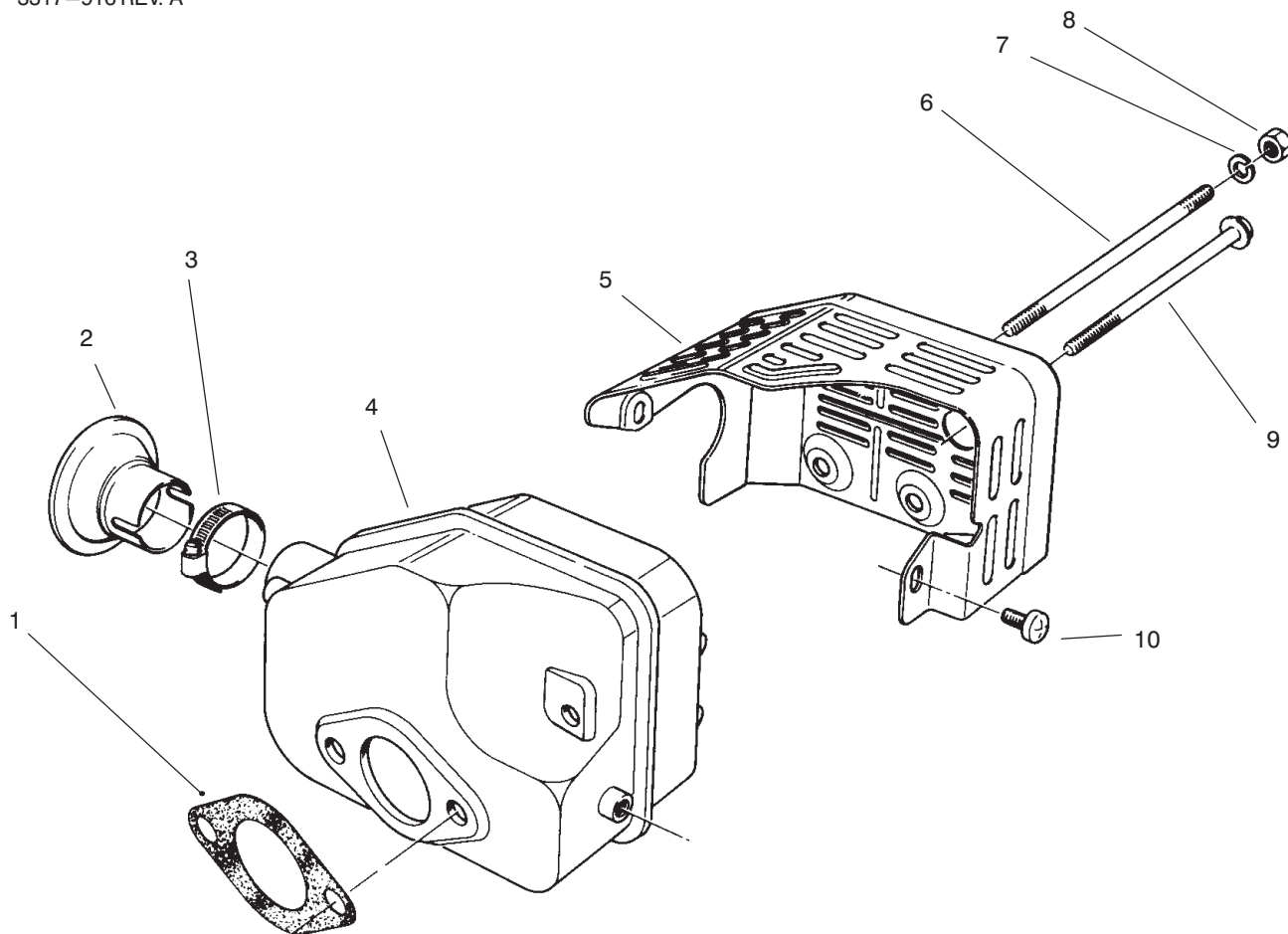
T-0663

CRANKSHAFT ASSEMBLY (Model No. 47PT6-3)

Ref. No.	Part No.	Description	No. Used
1	81-2800	Crankcase/Cylinder Assy.	1
2	81-0590	Piston Ring Set	1
3	81-0620	Circlip	2
4	81-0600	Pin - Wrist	1
5	81-2140	Piston - 58mm	1
6	81-0720	Seal - Oil, Upper	1
7	81-0710	Washer - Thrust, Upper	1
8	81-0690	Bearing - Upper 20mm	1
9	81-4680	Crankshaft/Connecting Rod Assembly	1
10	81-0770	Spacer - Governor	1

Ref. No.	Part No.	Description	No. Used
11	81-0750	Bracket - Arm, Governor	1
12	81-0700	Bearing - Lower 25mm	1
13	81-0730	Washer - Thrust, Lower	1
14	81-0740	Seal - Oil, Lower	1
15	81-0540	Bolt 30mm Lg.	5
16	81-0760	Pin - Crankshaft	1
17	81-0610	Bearing - Wrist Pin	1
18	81-0570	Bolt	4
19	81-0560	Plate - Mounting	1
20	81-0520	Pin - Crankcase	2
*	12-8099	Short Block	1

*Not Illustrated



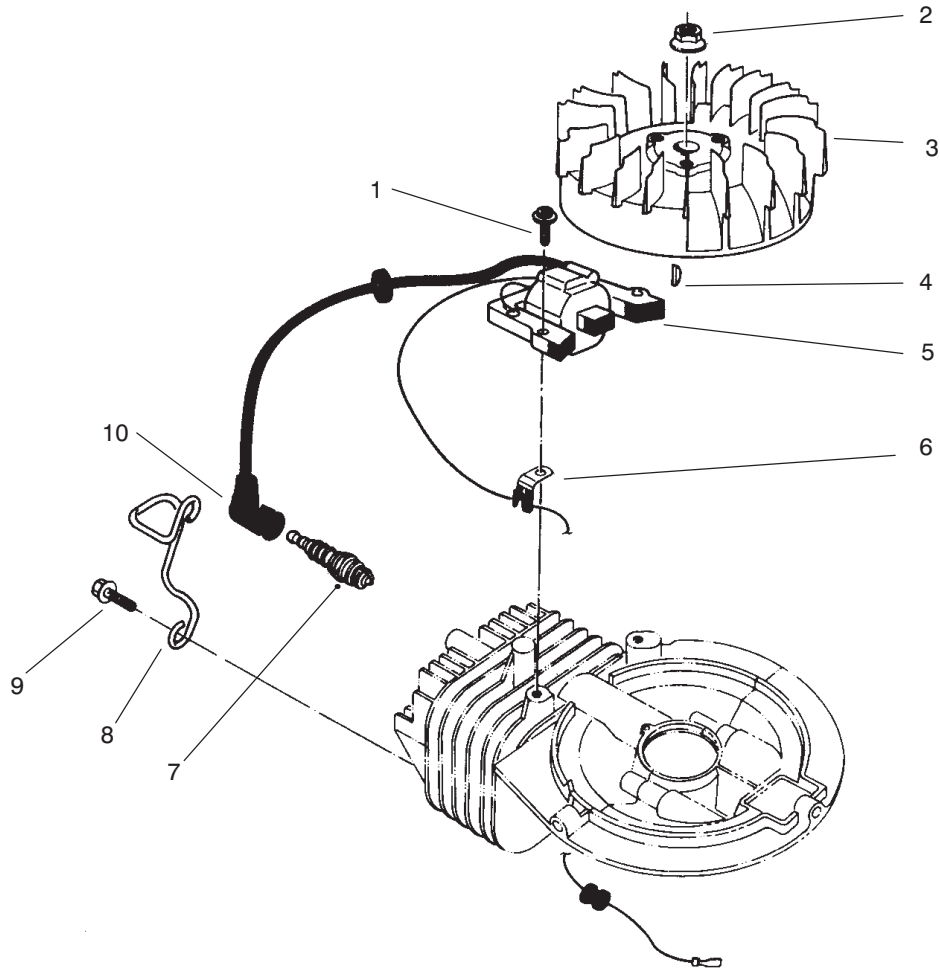
T-0667

MUFFLER ASSEMBLY (Model No. 47PT6-3)

Ref. No.	Part No.	Description	No. Used
1	81-1080	Gasket - Muffler	1
2	81-0200	Spark Arrester (Optional)	1
†3		Clamp	1
4	81-5690	Muffler	1
5	81-2450	Cover - Muffler	1

Ref. No.	Part No.	Description	No. Used
6	81-1100	Bolt	2
7	81-1120	Washer - Lock	2
8	81-1110	Nut	2
9	81-1150	Bolt - Self Tapping	1
10	81-1140	Screw - Phillips Hd.	2

†Obtain Locally



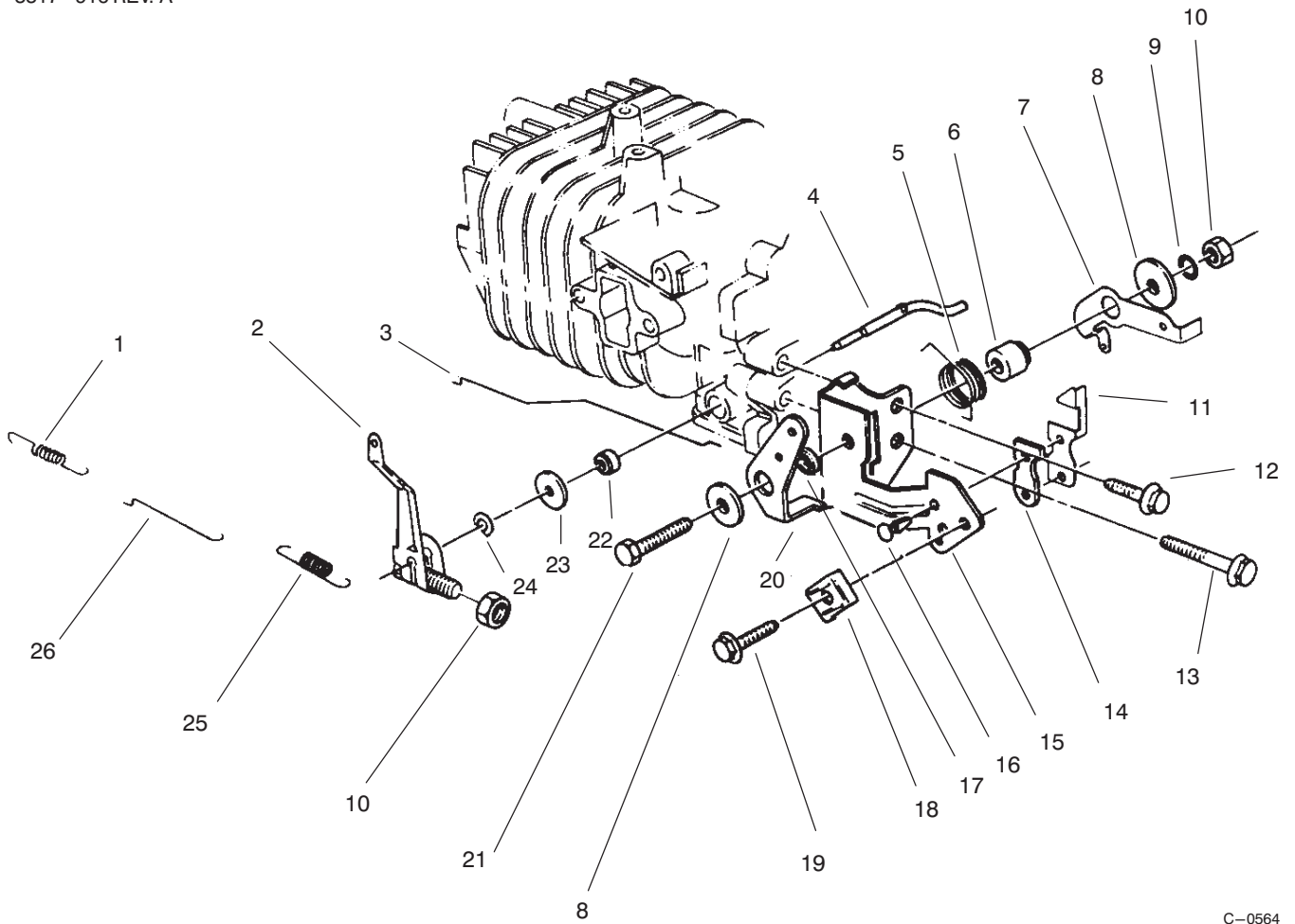
T-0664

IGNITION ASSEMBLY (Model No. 47PT6-3)

Ref. No.	Part No.	Description	No. Used
1	81-5680	Screw - Cap, Hex Hd.	2
2	81-1330	Nut	1
3	81-2810	Flywheel - Magneto	1
4	81-2370	Key - Flywheel	1
5	81-2820	Coil/Ignition Assembly	1
6	81-1480	Clamp	1

Ref. No.	Part No.	Description	No. Used
7	81-0181	Spark Plug	1
8	81-2120	Guard - Spark Plug	1
9	81-2350	Bolt - Self Tapping (20mm Lg.)	2
10	81-1500	Cap Assembly - Spark Plug	1
*	41-7650	Puller - Flywheel	1

*Not Illustrated

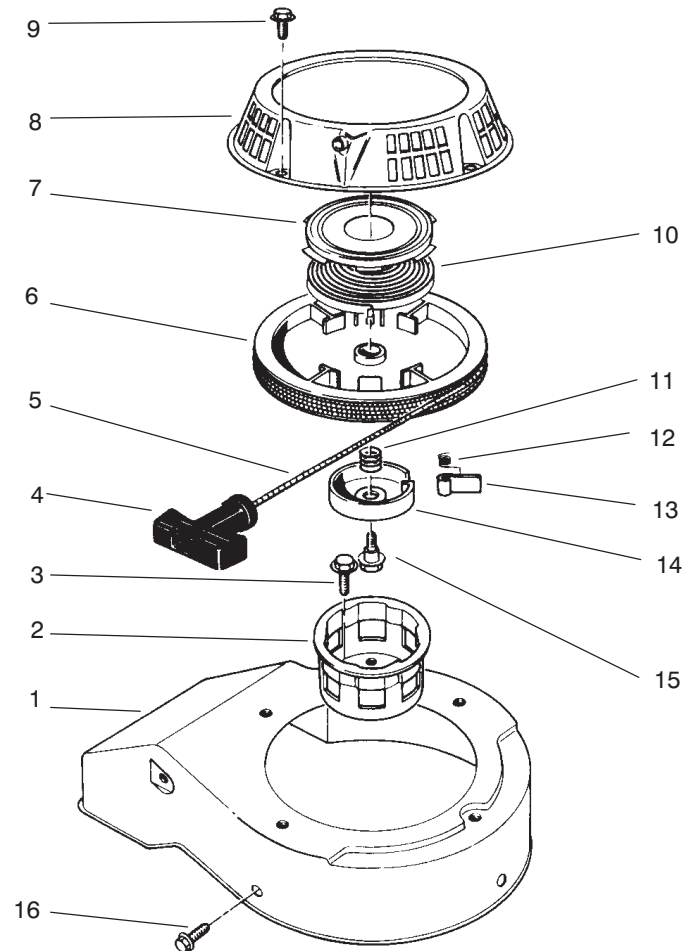


C-0564

GOVERNOR ASSEMBLY (Model No. 47PT6-3)

Ref. No.	Part No.	Description	No. Used
1	81-0920	Spring - Carburetor Rod	1
2	81-5420	Governor Arm/Bolt Assy.	1
3	81-5410	Rod - Choke	1
4	81-2880	Shaft - Governor	1
5	81-2460	Spring - Lever, Choke	1
6	81-1770	Spacer - Lever, Governor	1
7	81-2850	Lever - Governor	1
8	81-1750	Washer - Lever, Choke	2
9	81-1450	Washer - Lock	1
10	81-0900	Nut	2
11	81-1840	Terminal - Kill Switch	1
12	81-1170	Bolt - Self Tapping	1
13	81-0540	Bolt	1

Ref. No.	Part No.	Description	No. Used
14	81-1830	Insulator - Kill Switch	1
15	81-2420	Bracket - Throttle	1
16	81-4530	Rivet - Kill Switch	2
17	81-2470	Spacer - Lever, Choke	1
18	81-2430	Clamp - Cable	1
19	50-0130	Bolt - Clamp, Cable	1
20	81-1710	Lever - Choke	1
21	81-1730	Bolt - Bracket, Throttle	1
22	81-0850	Seal - Shaft, Governor	1
23	81-0860	Washer	1
24	81-0870	Ring - Retaining	1
25	81-2830	Spring - Governor	1
26	81-0910	Rod - Carburetor	1



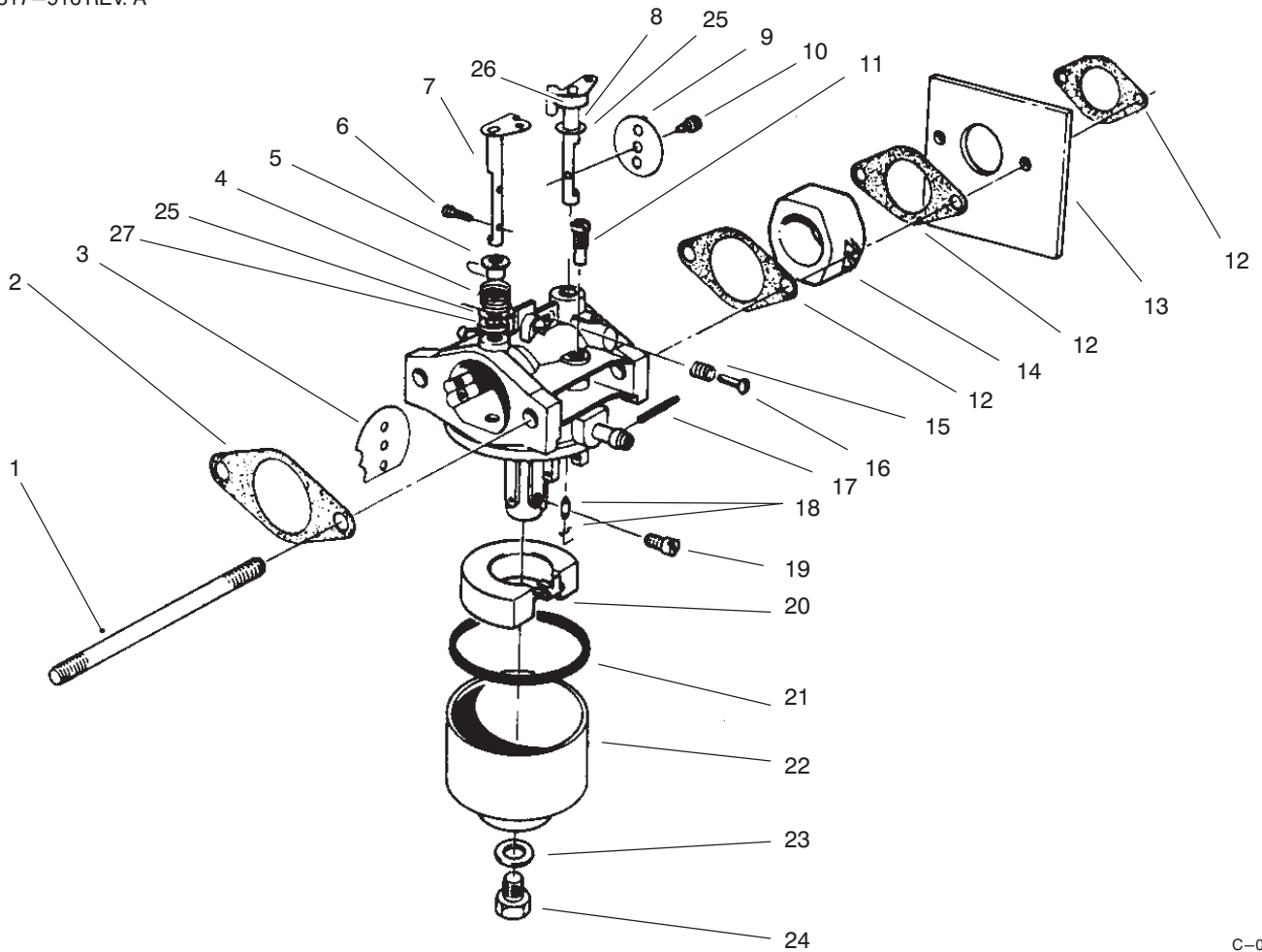
T-1102

RECOIL ASSEMBLY (Model No. 47PT6-3)

Ref. No.	Part No.	Description	No. Used
1	81-2080	Cover - Fan, Cooling	1
2	81-2170	Cup - Pulley, Starter	1
3	81-1300	Bolt	3
4	81-1630	Handle - Recoil	1
5	81-1270	Rope	1
6	81-1210	Pulley - Rope	1
7		Retainer - Spring, Recoil	1
8	81-2100	Case - Starter	1
9	81-1280	Bolt	4
10		Spring - Recoil	1
11	81-1240	Spring - Compression	1

Ref. No.	Part No.	Description	No. Used
12	81-1220	Spring - Dog	1
13	81-1230	Dog - Starter	1
14	81-1250	Retainer - Dog	1
15	81-1260	Bolt - Shoulder	1
16	53-1340	Bolt - Self Tapping (15mm Lg.)	3
*	81-5940	Starter Assembly (Incl. Ref. #4-15)	1
*	81-2300	Spring & Retainer Assembly (Incl. Ref. #7 & 10)	1

*Not Illustrated



C-0563

CARBURETOR ASSEMBLY (Model No. 47PT6-3)

Ref. No.	Part No.	Description	No. Used
1	81-5450	Stud Bolt, Carburetor	2
2	81-0090	Gasket	1
3	81-0240	Valve - Choke	1
4	81-0230	Spring - Choke	1
5	81-0220	Bushing - Choke	1
6	81-2160	Screw - Choke Plate	2
7	81-1950	Shaft - Choke	1
8	81-0250	Shaft - Throttle	1
9	81-0260	Valve - Throttle	1
10	81-0270	Screw - Throttle	1
11	81-1030	Jet - Pilot #40	1
12	81-0780	Gasket - Carburetor	3
13	81-5490	Shield - Carburetor	1
14	81-2190	Insulator - Carburetor	1
15	81-2580	Spring - Idle Stop	1
16	50-0250	Screw - Idle Stop	1
17	81-2600	Pin - Float	1
18	81-4910	Needle Valve	1
19	81-1060	Jet - Main #75	1

Ref. No.	Part No.	Description	No. Used
*	81-2340	Jet - Main #72.5 High Alt. Above 6,000 Ft. (Optional)	A/R
20	81-0970	Float	1
21	81-1010	Gasket - Bowl, Float	1
22	81-5660	Bowl - Float	1
23	81-1020	Gasket - Capscrew, Bowl	1
24	81-5670	Capscrew - Bowl	1
25	81-2530	Seal	2
26	81-2540	Ring	1
27	81-2550	Packing	1
*	81-5430	Carburetor Ass'y w/Primer	1
*	81-2520	Carburetor Ass'y	1
*	12-6379	Carburetor Kit (Incl. Ref. #2, 12, 18, 21 & 23)	1
*	81-5810	Seat Kit (Incl. Valve Seat & Ref. #18)	1

*Not Illustrated

TORO PART NUMBER INDEX

3317-916 REV. A

Part No.	Description	Pg. No.	Ref. No.	Qty.	Part No.	Description	Pg. No.	Ref. No.	Qty.
612066	Key	4	42	2	51-2690	Screw - Hex. Flange Hd.	3	8	1
3-7501	Washer - Curved	6	11	4	51-3211	Hose - Fuel	8	10	1
12-6379	Carburetor Kit	14	*	1	52-2194	Spacer - Retainer, Blade	3	17	1
12-8099	Short Block	9	*	1	52-2410	Hub	1	22	2
13-5149	Shaft - Input	4	9	1	52-2410	Hub	5	52	2
13-9739	Upper Case Assembly	4	10	1	52-2440	Spacer - Bearing	1	24	2
14-6009	Mounting Plate Assembly	7	*	1	52-2440	Spacer - Bearing	5	55	2
16-9119	Housing - Commercial	2	38	1	52-2450	Bearing - Wheel	2	25	4
25-7740	Knob - Arm	4	4	2	52-2450	Bearing - Wheel	5	56	4
25-7740	Knob - Arm	1	20	2	52-2450	Bearing	4	1	2
26-0670	Screw - Blade	3	21	1	52-2480	Spacer - Wheel	1	30	2
26-5790	Blade	3	20	1	53-1340	Bolt - Self Tapping	13	16	3
27-6232	Screw - Pivot	1	29	2	53-4690	Stop - Ground Strap	7	10	1
27-6300	Key - Square	3	16	1	53-7720	Tire & Wheel Assembly	2	*	2
29-9271	Gear - 42T	4	27	1	53-7740	Tire	1	21	2
29-9330	Key - Shift	4	30	2	53-7740	Tire	5	51	2
29-9340	Collar - Shift	4	32	1	53-7780	Plate - Wheel Half	1	23	4
29-9570	Bushing - Yoke	4	39	1	53-7780	Plate - Wheel Half	5	53	2
29-9690	Washer - Flat	4	24	1	53-7950	Shaft - Intermediate	5	67	1
33-3208	Rod - Shield	1	17	1	55-8010	Sleeve - Gear	4	34	1
36-4770	Spacer - Gear	4	26	3	55-8020	Retainer - Key	4	29	1
36-4780	Washer - Flat	4	33	3	60-8870	Yoke - Shift	4	23	1
36-4792	Washer - Thrust	4	12	4	60-9010	Strap - Ground	7	7	1
36-8070	V-Belt	4	14	1	61-8062	Engine - Complete	3	26	1
37-7260	Screw - Special	1	9	2	61-8300	Assembly - Arm, Pivot	1	31	2
39-6650	Gear - 18T	5	64	1	62-3830	Washer - Thrust, Keyed	4	45	2
39-6660	Pinion - Bevel	5	71	1	62-3980	Sleeve	3	9	2
39-6720	Sleeve	4	31	1	63-9330	Body - Air Cleaner	3	6	1
39-6740	Pulley	4	15	1	63-9340	Cover - Air Cleaner	3	12	1
39-7842	Key - Square	5	68	1	63-9380	Filter - Foam	3	11	1
39-9160	Pinion	4	46	2	65-5860	Protector - Crankshaft	3	24	1
39-9650	Spring	4	43	2	66-5370	Spring - Compression	7	9	1
40-1940	Washer - Hardened	1	35	4	66-5380	Brake Plate Assembly	7	5	1
41-7650	Puller - Flywheel	11	*	1	66-6150	Handle - Lower	6	21	1
42-4740	Gear - 38T	4	28	1	66-7040	Assembly - Deflector	1	1	1
44-0580	Shield - Rear, Safety	1	18	1	66-7190	Retainer - Blade	3	23	1
44-2750	Body - Primer	3	13	1	66-7460	Bulb - Primer	3	14	1
44-3172	Hose - Primer	3	5	1	66-7560	Assy. - Spring Arm, Front	1	32	2
46-3540	Gear - 12T	5	66	1	66-7561	Spring Arm Assy. - Rear	4	5	2
46-3550	Gear - 14T	5	65	1	66-9300	Screw - Hex. Flange Hd.	3	25	4
46-3560	Gear - 52T	4	25	1	68-3633	Hose - Fuel	8	6	1
46-6980	Support - Cable	6	26	1	70-1061	Cable - Throttle	6	16	1
46-7030	Retainer - Cable	1	11	1	71-1260	Decal - Pro Line	3	1	1
46-7910	Pulley - Driver	3	15	1	71-9280	Filter - Fuel	8	11	1
46-8081	Guide - Rope	6	29	1	74-1640	Cover - Wheel	5	59	2
46-8091	Screw - Hex. Washer Hd.	8	13	2	74-1650	Spacer - Wheel	5	58	2
47-2910	Washer - Thrust	5	72	1	74-1720	Wheel & Tire Assembly	5	*	2
47-6730	Seal	4	21	4	74-1741	Bracket - Adj. Traction	1	13	1
47-7260	Seal	5	73	1	74-1750	Bracket - Traction, Engage	4	17	1
47-7270	Bearing - Needle	4	11	2	74-1760	Gear - Bevel	5	63	1
48-2060	Bearing - Needle	4	3	4	74-1770	Cover - Belt	1	8	1
48-2170	Cap - End	4	7	2	74-1791	Cable - Traction	6	15	1
49-1631	Support - Spacer	6	6	2	74-1810	Washer	5	61	2
49-2040	Screw - Self Tapping	4	37	8	74-1851	Pivot Arm Assembly	4	2	2
49-2040	Screw - Thread Forming	2	40	8	74-1861	Gear Case Assembly	5	*	1
49-7700	Washer - Thrust, Keyed	4	44	2	74-1890	Shaft - Output	4	8	1
49-8461	Bracket - Guide, Belt	4	18	1	74-1920	Case - Lower	4	40	1
49-8740	Quadrant - Rear, L.H.	1	15	1	74-1960	Lever - Shift	4	22	1
49-8750	Quadrant - Rear, R.H.	1	6	1	74-1970	Decal - Traction Drive	1	12	1
49-8760	Quadrant - Front, L.H.	1	37	1	74-2110	Bracket - Tank	8	1	1
49-8770	Quadrant - Front, R.H.	2	39	1	77-0040	Decal - Recoil	3	2	1
50-0130	Bolt - Clamp, Cable	12	19	1	77-0520	Support - Bracket	8	8	1
50-0250	Screw - Idle Stop	14	16	1	77-2840	Retainer - Tank, Fuel	8	2	1
50-7180	Nut - Lock	3	10	2	77-5260	Strap - Insulation	7	4	1

*Not Illustrated

TORO PART NUMBER INDEX (Cont.)

Part No.	Description	Pg. No.	Ref. No.	Qty.	Part No.	Description	Pg. No.	Ref. No.	Qty.
81-0090	Gasket	14	2	1	81-1770	Spacer - Lever, Governor	12	6	1
81-0090	Gasket	3	4	1	81-1830	Insulator - Kill Switch	12	14	1
81-0181	Spark Plug	11	7	1	81-1840	Terminal - Kill Switch	12	11	1
81-0200	Spark Arrester (Optional)	10	2	1	81-1950	Shaft - Choke	14	7	1
81-0220	Bushing - Choke	14	5	1	81-2080	Cover - Fan, Cooling	13	1	1
81-0230	Spring - Choke	14	4	1	81-2100	Case - Starter	13	8	1
81-0240	Valve - Choke	14	3	1	81-2120	Guard - Spark Plug	11	8	1
81-0250	Shaft - Throttle	14	8	1	81-2140	Piston - 58mm	9	5	1
81-0260	Valve - Throttle	14	9	1	81-2160	Screw - Choke Plate	14	6	2
81-0270	Screw - Throttle	14	10	1	81-2170	Cup - Pulley, Starter	13	2	1
81-0520	Pin - Crankcase	9	20	2	81-2190	Insulator - Carburetor	14	14	1
81-0540	Bolt	12	13	1	81-2300	Spring & Retainer Assembly	13	*	1
81-0540	Bolt 30mm Lg.	9	15	5	81-2340	Jet - Main #72.5 High Alt.	14	*	A/R
81-0560	Plate - Mounting	9	19	1	81-2350	Bolt - Self Tapping	11	9	2
81-0570	Bolt	9	18	4	81-2370	Key - Flywheel	11	4	1
81-0590	Piston Ring Set	9	2	1	81-2420	Bracket - Throttle	12	15	1
81-0600	Pin - Wrist	9	4	1	81-2430	Clamp - Cable	12	18	1
81-0610	Bearing - Wrist Pin	9	17	1	81-2450	Cover - Muffler	10	5	1
81-0620	Circlip	9	3	2	81-2460	Spring - Lever, Choke	12	5	1
81-0690	Bearing - Upper 20mm	9	8	1	81-2470	Spacer - Lever, Choke	12	17	1
81-0700	Bearing - Lower 25mm	9	12	1	81-2520	Carburetor Ass'y	14	*	1
81-0710	Washer - Thrust, Upper	9	7	1	81-2530	Seal	14	25	2
81-0720	Seal - Oil, Upper	9	6	1	81-2540	Ring	14	26	1
81-0730	Washer - Thrust, Lower	9	13	1	81-2550	Packing	14	27	1
81-0740	Seal - Oil, Lower	9	14	1	81-2580	Spring - Idle Stop	14	15	1
81-0750	Bracket - Arm, Governor	9	11	1	81-2600	Pin - Float	14	17	1
81-0760	Pin - Crankshaft	9	16	1	81-2800	Crankcase/Cylinder Assy.	9	1	1
81-0770	Spacer - Governor	9	10	1	81-2810	Flywheel - Magneto	11	3	1
81-0780	Gasket - Carburetor	14	12	3	81-2820	Coil/Ignition Assembly	11	5	1
81-0850	Seal - Shaft, Governor	12	22	1	81-2830	Spring - Governor	12	25	1
81-0860	Washer	12	23	1	81-2850	Lever - Governor	12	7	1
81-0870	Ring - Retaining	12	24	1	81-2880	Shaft - Governor	12	4	1
81-0900	Nut	12	10	2	81-3980	Stop - Rope	3	28	1
81-0910	Rod - Carburetor	12	26	1	81-4530	Rivet - Kill Switch	12	16	2
81-0920	Spring - Carburetor Rod	12	1	1	81-4680	Crankshaft/Connecting Rod	9	9	1
81-0970	Float	14	20	1	81-4910	Needle Valve	14	18	1
81-1010	Gasket - Bowl, Float	14	21	1	81-5410	Rod - Choke	12	3	1
81-1020	Gasket - Capscrew, Bowl	14	23	1	81-5420	Governor Arm/Bolt Assy.	12	2	1
81-1030	Jet - Pilot #40	14	11	1	81-5430	Carburetor Ass'y w/Primer	14	*	1
81-1060	Jet - Main #75	14	19	1	81-5450	Stud Bolt, Carburetor	14	1	2
81-1080	Gasket - Muffler	10	1	1	81-5490	Shield - Carburetor	14	13	1
81-1100	Bolt	10	6	2	81-5660	Bowl - Float	14	22	1
81-1110	Nut	10	8	2	81-5670	Capscrew - Bowl	14	24	1
81-1120	Washer - Lock	10	7	2	81-5680	Screw - Cap, Hex Hd.	11	1	2
81-1140	Screw - Phillips Hd.	10	10	2	81-5690	Muffler	10	4	1
81-1150	Bolt - Self Tapping	10	9	1	81-5810	Seat Kit	14	*	1
81-1170	Bolt - Self Tapping	12	12	1	81-5940	Starter Assembly	13	*	1
81-1210	Pulley - Rope	13	6	1	82-9952	Assy. - Bracket, Throttle	6	12	1
81-1220	Spring - Dog	13	12	1	84-7820	Plate - Mounting	7	2	1
81-1230	Dog - Starter	13	13	1	92-4957	Wheel - Half & Gear	5	49	2
81-1240	Spring - Compression	13	11	1	92-6316	Fitting - Grease	4	6	2
81-1250	Retainer - Dog	13	14	1	92-9698	Screw - Shoulder	7	6	1
81-1260	Bolt - Shoulder	13	15	1	93-6654	Decal - Danger	1	2	1
81-1270	Rope	13	5	1	93-6657	Decal - Danger	1	7	1
81-1280	Bolt	13	9	4	93-6659	Decal - Fuel	8	9	1
81-1300	Bolt	13	3	3	93-6664	Label - Grease	1	10	1
81-1330	Nut	11	2	1	93-6667	Decal - Warning	2	42	1
81-1450	Washer - Lock	12	9	1	93-7021	Mount - Tank, Bottom	8	12	1
81-1480	Clamp	11	6	1	93-7199	Cap - Gas	8	3	1
81-1500	Cap Assembly - Spark Plug	11	10	1	93-7661	Guard - Muffler Extension	3	27	1
81-1630	Handle - Recoil	13	4	1	94-4370	Bail - Brake	6	8	1
81-1710	Lever - Choke	12	20	1	94-4371	Bail - Traction	6	1	1
81-1730	Bolt - Bracket, Throttle	12	21	1	94-4372	Handle - Upper	6	23	1
81-1750	Washer - Lever, Choke	12	8	2	94-5827	Tank - Gas	8	4	1

*Not Illustrated

TORO PART NUMBER INDEX (Cont.)

Part No.	Description	Pg. Ref. No. No. Qty.	Part No.	Description	Pg. Ref. No. No. Qty.
94-5829	Cable - Brake	7 8 1	3285-19	Pin - Groove	4 35 1
94-5829	Cable - Brake	6 25 1	3290-378	Tie - Cable	6 14 3
94-6046	Decal - Control, Traction	6 2 1	3290-378	Tie - Cable	1 16 1
2412-95	Clamp - Fuel Line	8 5 4	3290-456	Washer - Belleville	6 19 4
252-103	Bearing - Closed	5 69 2	3290-459	Rivet	7 3 2
256-276	Spacer - Plastic	6 7 2	3296-5	Nut - Lock	4 16 1
257-3	Washer - Pivot	1 33 2	3296-6	Nut - Lock	1 36 2
302-63	Fitting - Grease	4 13 1	3296-29	Nut - Lock	6 18 4
321-2	Screw - Cap Hex. Hd.	1 28 8	3296-42	Nut - Lock	1 3 11
321-2	Screw - Cap, Hex. Hd.	5 48 8	3296-42	Nut - Lock	6 3 2
321-5	Screw - Cap Hex. Hd.	1 5 2	3296-42	Nut - Lock	8 7 1
321-7	Screw - Cap Hex. Hd.	2 41 1	3296-42	Nut - Lock	5 54 8
321-9	Screw - Hex Hd. Cap	6 31 1	3296-47	Nut - Lock	6 17 2
321-13	Screw - Cap Hex. Hd.	6 10 2	3296-58	Nut - Lock	6 4 2
321-15	Screw - Hex Hd. Cap	6 30 1	32121-99	Pin - Roll	4 19 1
322-4	Screw - Hex Hd. Cap	8 14 2	32144-70	Screw	7 1 1
322-6	Screw - Hex Hd. Cap	6 20 3	32144-70	Screw - Thread Forming	1 14 1
322-7	Screw - Cap Hex. Hd.	6 24 1	32144-70	Screw - Thread Forming	3 19 4
322-12	Screw - Cap Hex. Hd.	6 9 2	32144-112	Screw - Self Tapping	7 11 1
322-12	Screw - Cap Hex. Hd.	6 22 2	32151-36	Ring - Retaining	5 62 2
323-12	Screw - Cap Hex. Hd.	1 27 2	32151-57	Ring - Retaining	5 70 1
323-13	Screw - Cap, Hex. Hd.	5 57 2	32151-68	Ring - Klip	4 47 4
3253-22	Washer - Lock	3 22 1	32151-86	E-Ring	6 13 2
3254-6	Washer - Internal Tooth	3 18 3	32152-2	Nut - Lock	1 34 2
3256-16	Washer	3 7 1	32152-2	Nut - Lock	5 60 2
3256-22	Washer - Flat	1 4 6			
3256-22	Washer - flat	6 27 1			
3256-45	Washer - Flat	5 75 1			
3257-1	Key - Woodruff	5 74 2			

OPTIONAL EQUIPMENT

Spark Arrestor Muffler Part No. 81-0200

