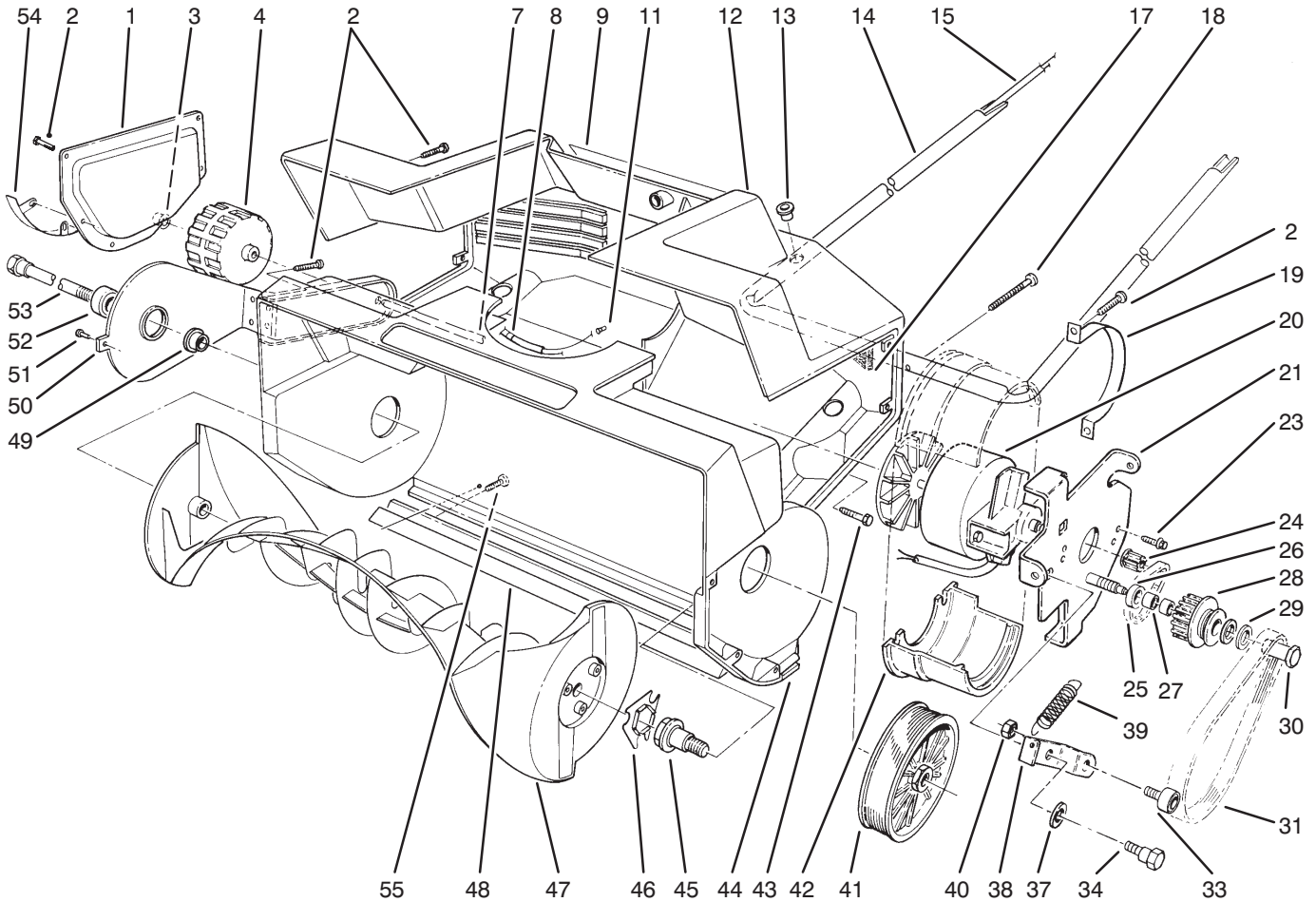




MODEL NO. 38025-690001 & UP

PARTS CATALOG

1800 POWER CURVE SNOWTHROWER

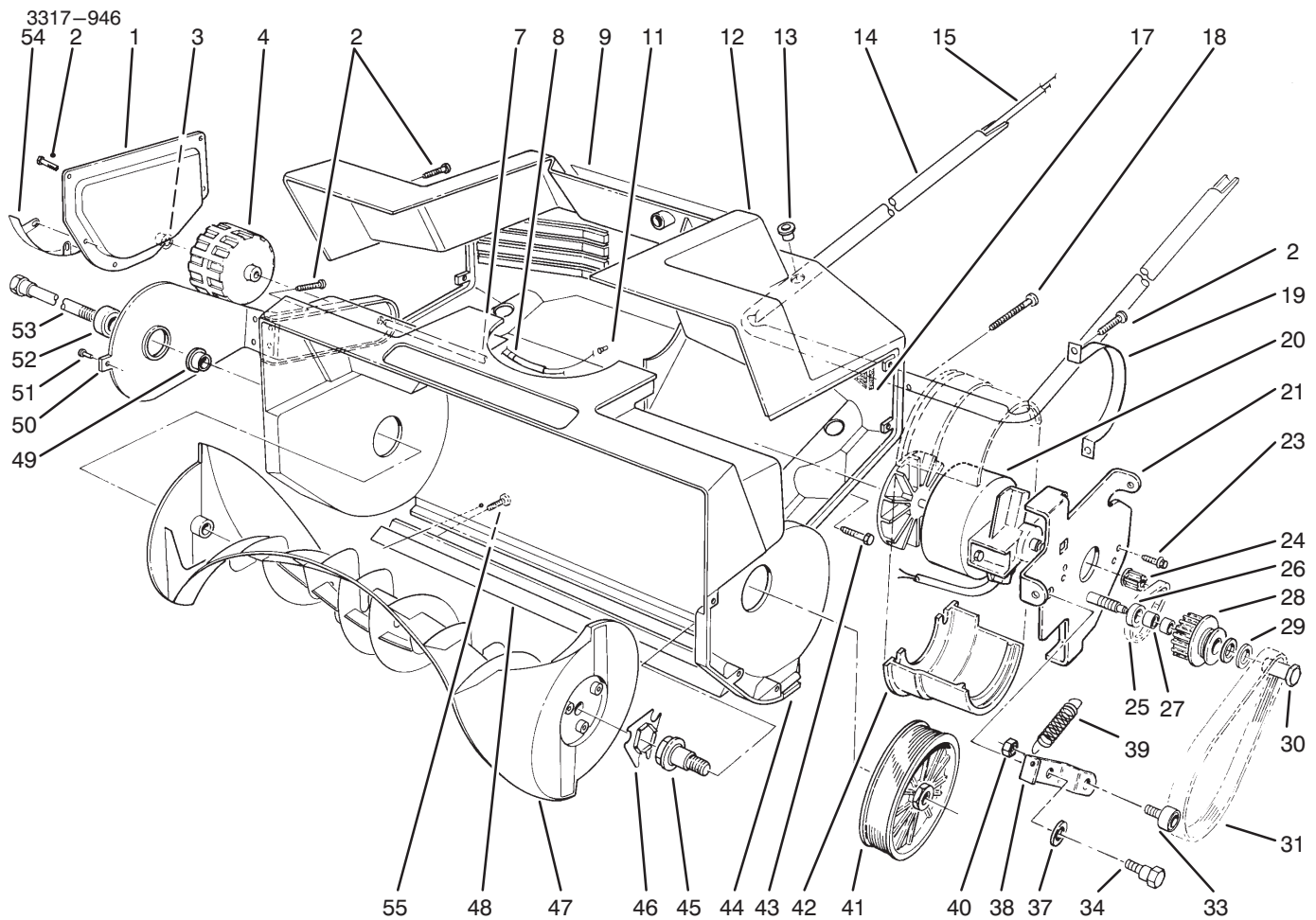


C-0455B

HOUSING & ROTOR ASSEMBLY

Ref. No.	Part No.	Description	No. Used
1	73-9370	Plate - Side	2
2	32104-121	Screw - Pan Hd.	19
3	32112-1	Nut - Push	2
4	73-5720	Wheel	2
7	73-0370	Shaft - Axle	1
8	64-5820	Relief - Strain	1
9	73-0450	Decal - Danger	1
11	218-511	Connector	2
12	73-9320	Shroud - Housing	1
13	256-307	Bushing	1
14	73-0280	Tube - Lower Handle	1
15	73-3630	Wire Harness	1
17	73-1800	Filter - Foam	1
18	32144-88	Screw - Pan Hd.	4
19	73-0120	Strap - Motor	1
20	73-3520	Motor	1

Ref. No.	Part No.	Description	No. Used
21	73-8680	Motor Plate Assembly	1
23	32144-100	Screw - Hex Washer Hd.	2
24	73-3660	Pulley - Driver	1
25	73-0160	Belt - Timing	1
26	73-3580	Washer	1
27		Bearing - Needle	2
28	73-3810	Pulley Assembly - Idler (Incl. Ref. #27)	1
29	73-0041	Washer - Thrust	2
30	73-3530	Bolt - Idler	1
31	61-8802	Belt - Drive	1
33	73-5730	Bearing Assembly (Incl. Ref. #40)	1
34	27-0411	Screw - Shoulder	1
37	25-5641	Washer	1
38	73-3600	Bracket - Idler	1

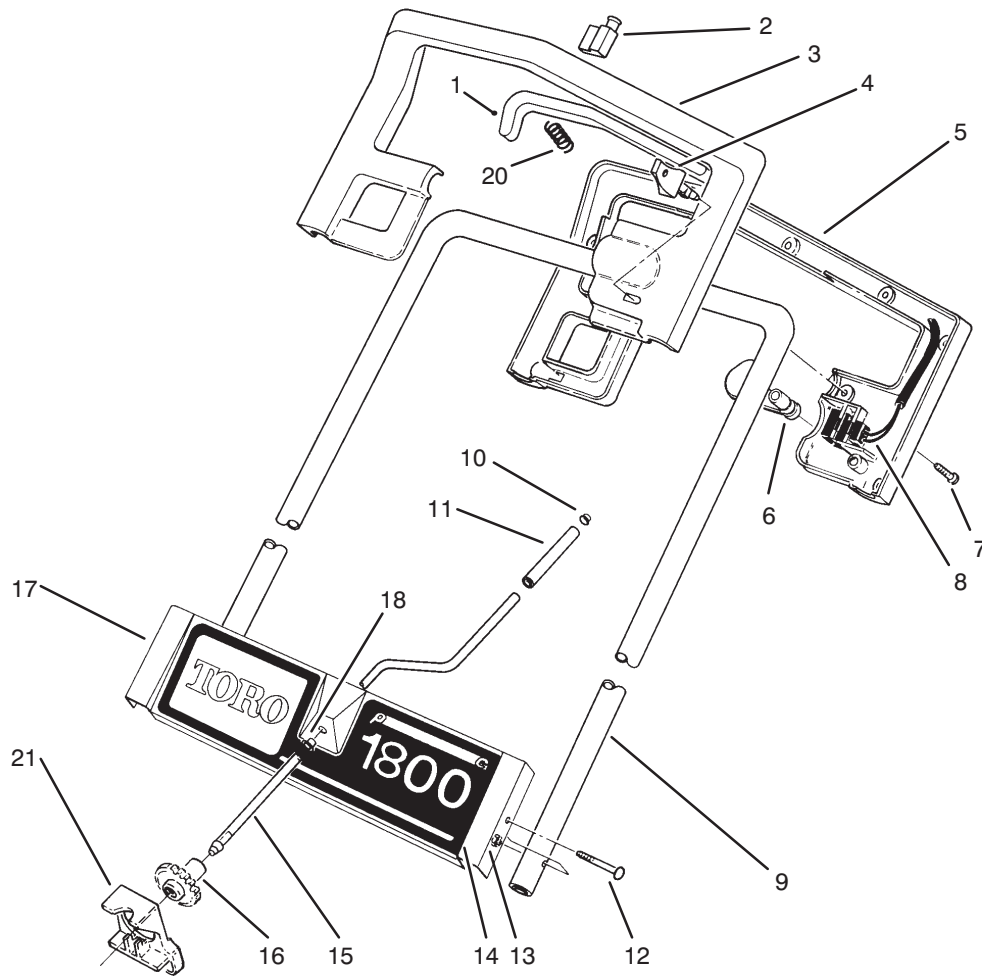


C-0455B

HOUSING & ROTOR ASSEMBLY (Continued)

Ref. No.	Part No.	Description	No. Used
39	73-3680	Spring	1
40	3296-47	Nut - Lock	1
41	73-3550	Pulley - Driven	1
42	73-3650	Clamp - Motor Bracket	2
43	32104-97	Screw - Hex Hd.	2
44	73-3640	Housing - Rotor	1
45	73-0990	Shaft - Rotor Driver	1
46	73-0860	Coupler - Rotor	1
47	73-8590	Rotor	1

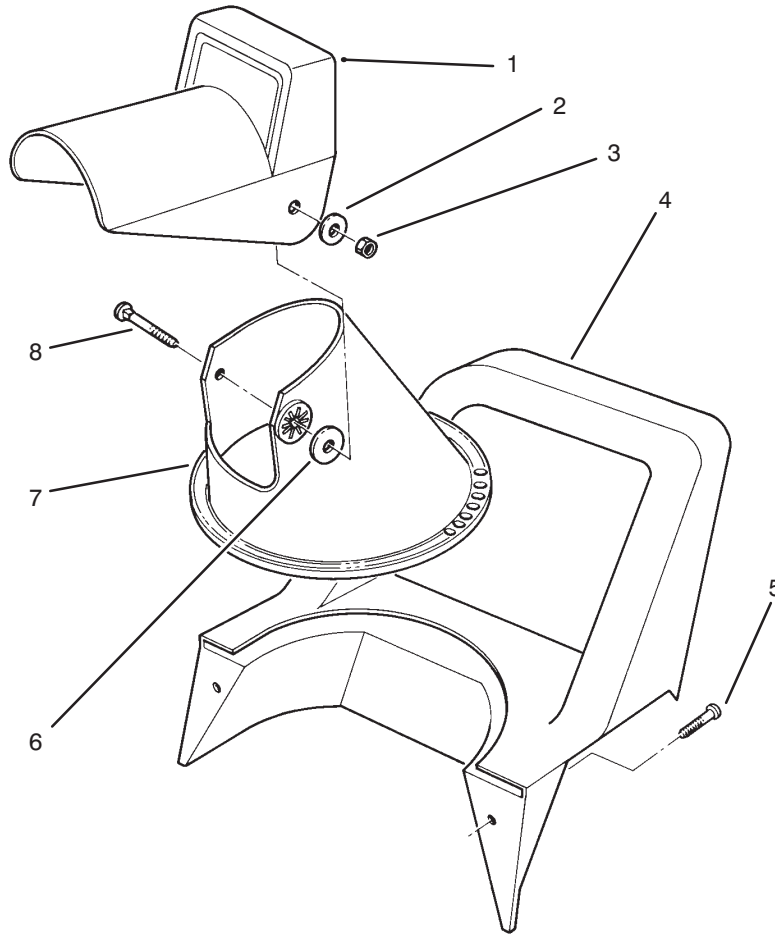
Ref. No.	Part No.	Description	No. Used
48	73-3690	Scraper	1
49	73-8580	Bushing	1
50	73-1900	Bracket - Wheel (Incl. Ref. #52)	2
51	3290-271	Rivet - Pop	2
52	61-8780	Bearing - Ball	2
53	73-0020	Shaft - Rotor	1
54	73-1570	Skid - Housing	2
55	32144-108	Screw - Pan Hd.	2



C-0456

HANDLE ASSEMBLY

Ref. No.	Part No.	Description	No. Used	Ref. No.	Part No.	Description	No. Used
1	73-3510	Bar - Switch	1	11	73-0251	Sleeve - Chute Crank	1
2	64-4930	Switch	1	12	33-8951	Screw - Hex Hd. Mach.	2
3	73-5700	Handle - Upper Control	1	13	3296-12	Nut - Lock	2
4	73-5190	Key	1	14	73-0490	Decal - Escutcheon	1
5	73-5710	Handle - Lower Control	1	15	73-0240	Rod - Chute Crank	1
6	73-5690	Tab - Lock	1	16	73-0230	Gear - Chute Crank	1
7	32104-121	Screw - Pan Hd. Form.	11	17	73-0310	Plate - Escutcheon	1
8	73-5642	Cord - Supply	1	18	256-306	Bushing - Snap In	1
9	73-3460	Tube - Upper Handle	1	20	73-3450	Spring	2
10	32112-1	Nut - Push	1	21	73-3710	Brake - Gear	1



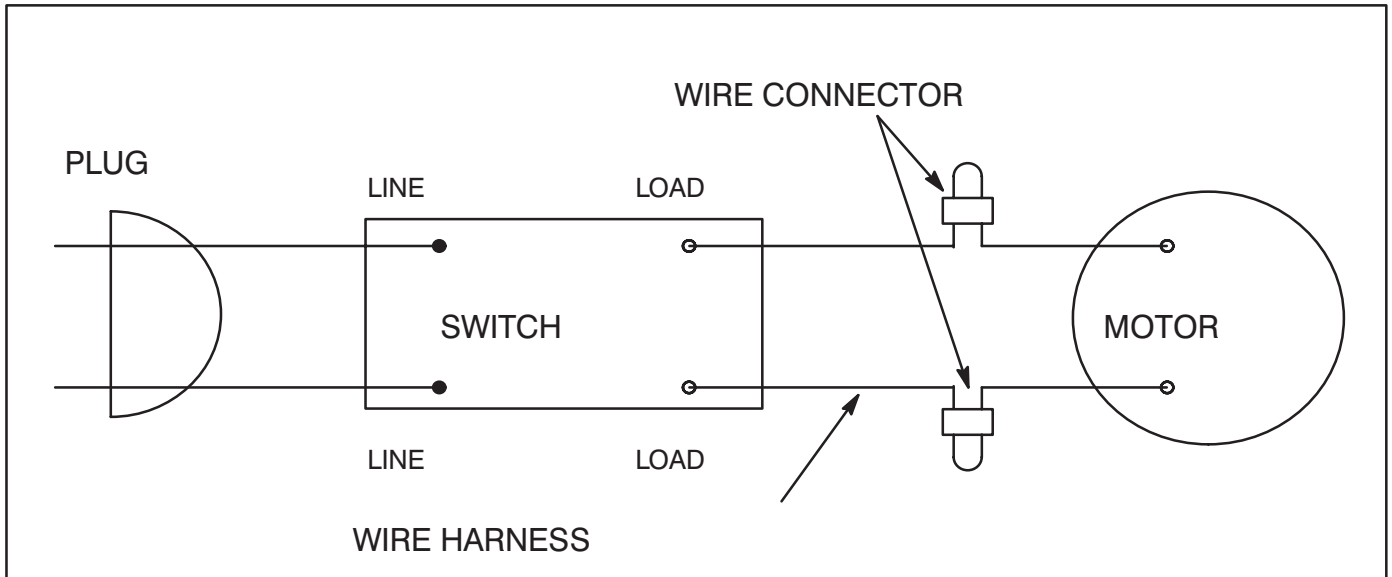
C-0457

CHUTE ASSEMBLY

Ref. No.	Part No.	Description	No. Used
1	73-0190	Chute - Deflector	1
2	3256-68	Washer - Flat	2
3	3296-29	Nut - Lock	2
4	73-0260	Handle - Middle	1
5	32104-121	Screw - Pan Hd. Form	4
6	20-4320	Washer - Rubber	2
7	73-0180	Chute - Lower	1

Ref. No.	Part No.	Description	No. Used
8	3230-2	Bolt - Carriage	2
*	73-0520	Loose Parts (Incl. Ref. #2, 3, 6, & 8, page 4) (Incl. Ref. #12, & 13 page 3)	1

*Not Illustrated



C-1721

ELECTRICAL ASSEMBLY

Ref. No.	Part No.	Description	No. Used

Ref. No.	Part No.	Description	No. Used

TORO PART NUMBER INDEX

Part No.	Description	Pg. No.	Ref. No.	Qty.	Part No.	Description	Pg. No.	Ref. No.	Qty.
	Bearing Needle	1	27	2	73-3630	Wire Harness	1	15	1
20-4320	Washer - Rubber	4	6	2	73-3640	Housing - Rotor	2	44	1
25-5641	Washer	1	37	1	73-3650	Clamp - Motor Bracket	2	42	2
27-0411	Screw - Shoulder	1	34	1	73-3660	Pulley - Driver	1	24	1
33-8951	Screw - Hex Hd. Mach.	3	12	2	73-3680	Spring	2	39	1
61-8780	Bearing - Ball	2	52	2	73-3690	Scraper	2	48	1
61-8802	Belt - Drive	1	31	1	73-3710	Brake - Gear	3	21	1
64-4930	Switch	3	2	1	73-3810	Pulley Assembly - Idler	1	28	1
64-5820	Relief - Strain	1	8	1	73-5190	Key	3	4	1
73-0020	Shaft - Rotor	2	53	1	73-5642	Cord - Supply	3	8	1
73-0041	Washer - Thrust	1	29	2	73-5690	Tab - Lock	3	6	1
73-0120	Strap - Motor	1	19	1	73-5700	Handle - Upper Control	3	3	1
73-0160	Belt - Timing	1	25	1	73-5710	Handle - Lower Control	3	5	1
73-0180	Chute - Lower	4	7	1	73-5720	Wheel	1	4	2
73-0190	Chute - Deflector	4	1	1	73-5730	Bearing Assembly	1	33	1
73-0230	Gear - Chute Crank	3	16	1	73-8580	Bushing	2	49	1
73-0240	Rod - Chute Crank	3	15	1	73-8590	Rotor	2	47	1
73-0251	Sleeve - Chute Crank	3	11	1	73-8680	Motor Plate Assembly	1	21	1
73-0260	Handle - Middle	4	4	1	73-9320	Shroud - Housing	1	12	1
73-0280	Tube - Lower Handle	1	14	1	73-9370	Plate - Side	1	1	2
73-0310	Plate - Escutcheon	3	17	1	218-511	Connector	1	11	2
73-0370	Shaft - Axle	1	7	1	256-306	Bushing - Snap In	3	18	1
73-0450	Decal - Danger	1	9	1	256-307	Bushing	1	13	1
73-0490	Decal - Escutcheon	3	14	1	3230-2	Bolt - Carriage	4	8	2
73-0520	Loose Parts	4	*	1	3256-68	Washer - Flat	4	2	2
73-0860	Coupler - Rotor	2	46	1	3290-271	Rivet - Pop	2	51	2
73-0990	Shaft - Rotor Driver	2	45	1	3296-12	Nut - Lock	3	13	2
73-1570	Skid - Housing	2	54	2	3296-29	Nut - Lock	4	3	2
73-1800	Filter - Foam	1	17	1	3296-47	Nut - Lock	2	40	1
73-1900	Bracket - Wheel	2	50	2	32104-97	Screw - Hex Hd.	2	43	2
73-3450	Spring	3	20	2	32104-121	Screw - Pan Hd.	1	2	19
73-3460	Tube - Upper Handle	3	9	1	32104-121	Screw - Pan Hd. Form.	3	7	11
73-3510	Bar - Switch	3	1	1	32104-121	Screw - Pan Hd. Form	4	5	4
73-3520	Motor	1	20	1	32112-1	Nut - Push	1	3	2
73-3530	Bolt - Idler	1	30	1	32112-1	Nut - Push	3	10	1
73-3550	Pulley - Driven	2	41	1	32144-88	Screw - Pan Hd.	1	18	4
73-3580	Washer	1	26	1	32144-100	Screw - Hex Washer Hd.	1	23	2
73-3600	Bracket - Idler	1	38	1	32144-108	Screw - Pan Hd.	2	55	2

