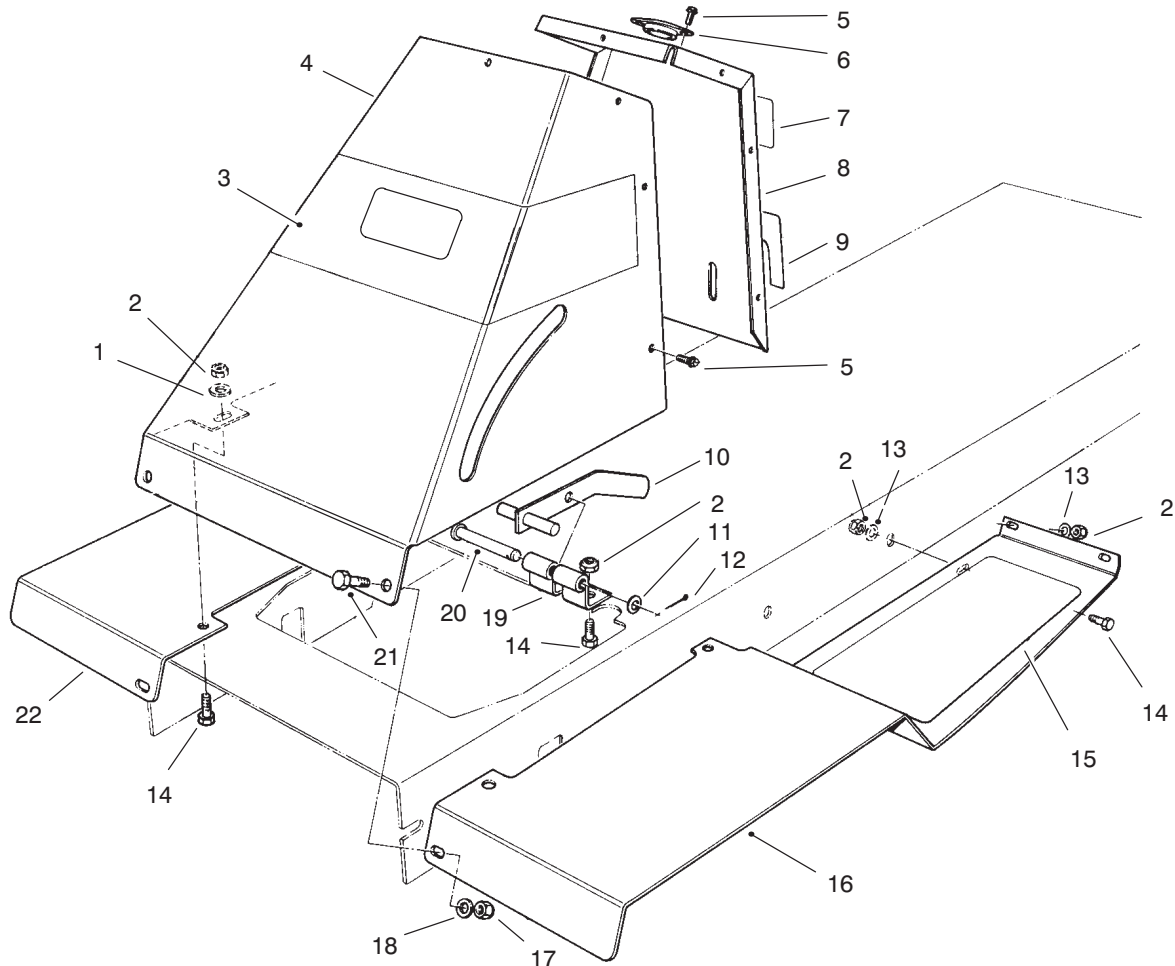




MODEL NO. 70080-690001 & UP  
MODEL NO. 70120-690001 & UP

PARTS  
CATALOG

**WHEEL HORSE®**  
1032 & 1232 Recycler® Riding Mower



C-1933

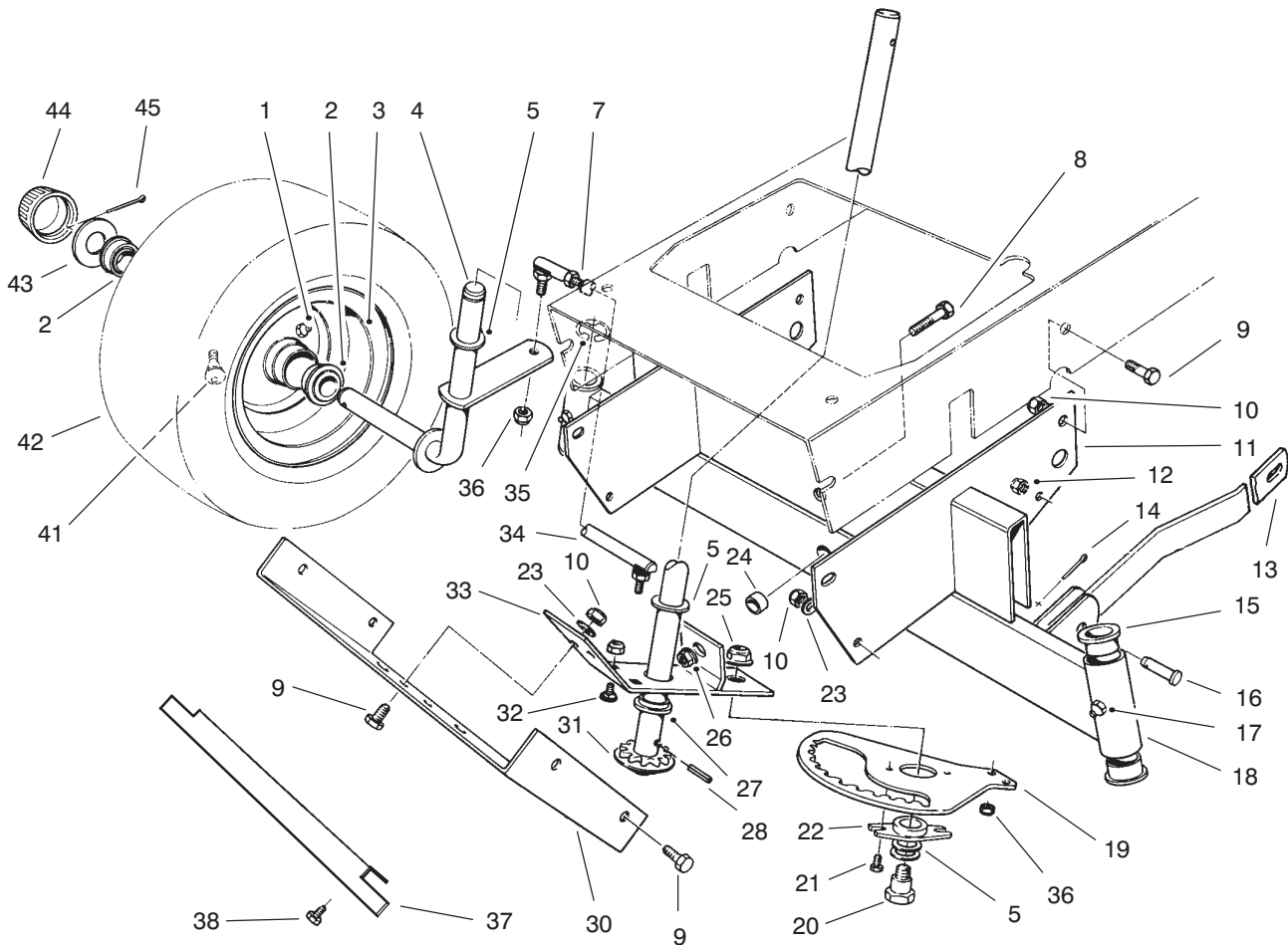
## FRONT TOWER ASSEMBLY

| Ref. No. | Part No. | Description                | No. Used | Ref. No. | Part No. | Description               | No. Used |
|----------|----------|----------------------------|----------|----------|----------|---------------------------|----------|
| 1        | 3256-35  | Washer - Flat              | 4        | 14       | 322-5    | Screw - Cap Hex. Hd.      | 10       |
| 2        | 3296-29  | Nut - Lock                 | 14       | 15       | 92-7975  | Tread - Foot L.H.         | 1        |
| 3        | 92-7987  | Decal - Recycler           | 1        | *        | 92-7974  | Tread - Foot R.H.         | 1        |
| 4        | 56-7130  | Tower - Front              | 1        | 16       | 47-0940  | Footrest - L.H.           | 1        |
| 5        | 32104-76 | Screw - Self Tap Acorn Hd. | 9        | 17       | 3296-42  | Nut - Lock                | 2        |
| 6        | 56-7170  | Guide - Shaft, Steering    | 1        | 18       | 3256-22  | Washer - Flat             | 2        |
| 7        | 79-0370  | Decal - Danger             | 1        | 19       | 47-2060  | Bracket - Brake, Parking  | 1        |
| 8        | 56-7140  | Tower - Rear               | 1        | 20       | 283-52   | Pin - Clevis              | 1        |
| 9        | 56-7810  | Decal - Brake, Parking     | 1        | 21       | 321-4    | Screw - Cap Hex. Hd.      | 2        |
| 10       | 47-1290  | Brake - Parking            | 1        | 22       | 47-0930  | Footrest - R.H.           | 1        |
| 11       | 3256-24  | Washer - Flat              | 1        | *        | 12-8829  | Loose Parts               | 1        |
| 12       | 3272-6   | Pin - Cotter               | 1        | *        | 12-8819  | Loose Parts               | 1        |
| 13       | 3256-23  | Washer - Flat              | 8        |          |          | (Includes Steering Wheel) | 1        |

\*Not Illustrated

© The TORO Company -1995  
All Rights Reserved

TPS



C-0438C

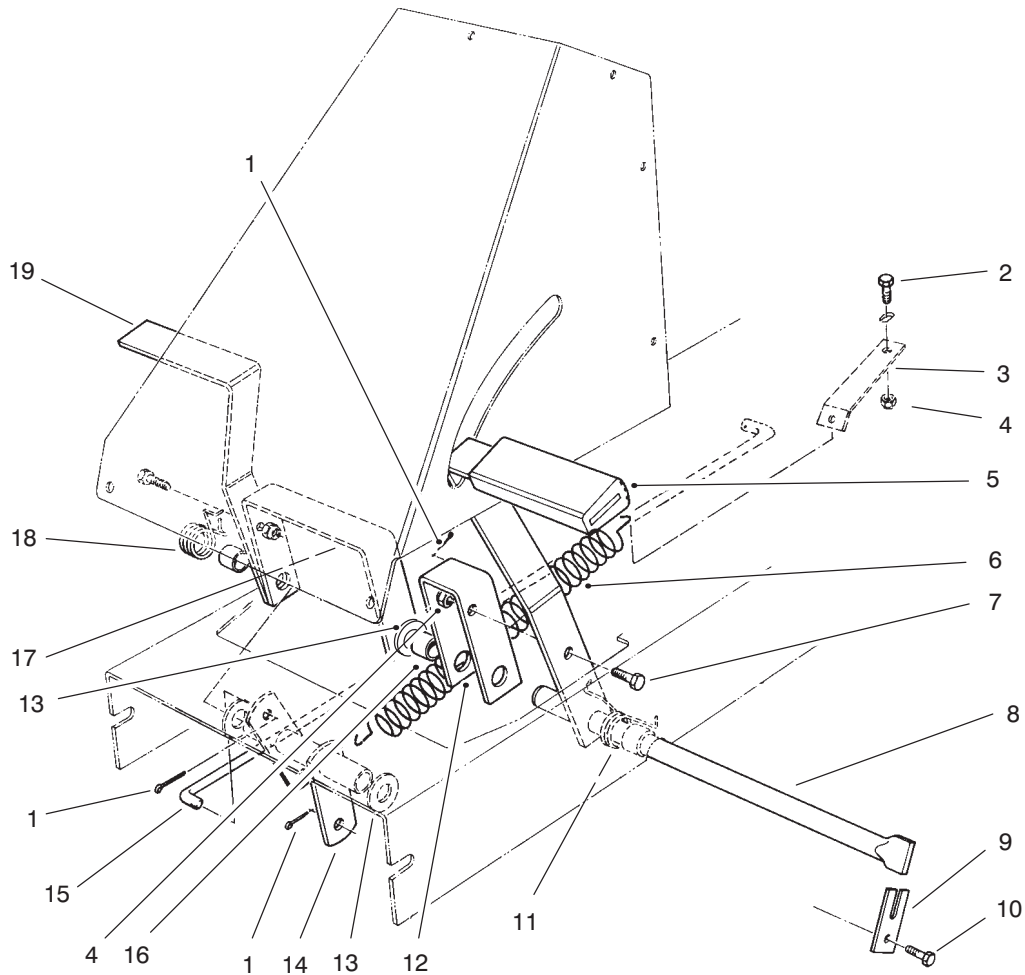
## FRONT AXLE ASSEMBLY

| Ref. No. | Part No. | Description                           | No. Used |
|----------|----------|---------------------------------------|----------|
| 1        | 302-5    | Fitting - Grease                      | 2        |
| 2        | 110513   | Bearing                               | 4        |
| 3        | 217-80   | Rim                                   | 2        |
| 4        | 47-0600  | Spindle - R.H.                        | 1        |
| *        | 47-0590  | Spindle - L.H.                        | 1        |
| 5        | 3-6498   | Washer - Thrust                       | 5        |
| 7        | 3220-2   | Nut - Hex. Jam                        | 1        |
| 8        | 325-6    | Screw - Cap Hex. Hd.                  | 1        |
| 9        | 322-5    | Screw - Cap Hex. Hd.                  | 8        |
| 10       | 3296-29  | Nut - Lock                            | 8        |
| 11       | 47-0760  | Support - Axle, Front                 | 1        |
| 12       | 3296-8   | Nut - Lock                            | 1        |
| 13       | 47-0010  | Arm - Suspension, Front               | 2        |
| 14       | 3272-6   | Pin - Cotter                          | 2        |
| 15       | 27-9080  | Bearing - Flange                      | 4        |
| 16       | 283-2    | Pin - Clevis                          | 2        |
| 17       | 302-49   | Fitting - Grease                      | 2        |
| 18       | 80-2430  | Axle - Front<br>(Incl. Ref. #15 & 17) | 1        |
| 19       | 80-2450  | Rack - Steering                       | 1        |
| 20       | 56-7530  | Bolt - Shoulder                       | 1        |
| 21       | 32144-4  | Screw - Special                       | 2        |
| 22       | 56-7520  | Bushing - Sector                      | 1        |
| 23       | 3256-23  | Washer - Flat                         | 6        |

| Ref. No. | Part No. | Description                                  | No. Used |
|----------|----------|--|----------|
| 24       | 28-0380  | Spacer - Axle, Front                         | 1        |
| 25       | 32128-21 | Nut - Lock, Flange Hd.                       | 1        |
| 26       | 32128-23 | Nut - Lock, Flange Hd.                       | 1        |
| 27       | 47-0700  | Bearing - Flange                             | 1        |
| 28       | 32121-9  | Pin - Roll                                   | 1        |
| 30       | 56-7180  | Cover - Front                                | 1        |
| 31       | 56-7500  | Shaft - Steering                             | 1        |
| 32       | 3230-18  | Bolt - Carriage                              | 2        |
| 33       | 56-7470  | Bracket - Rack, Steering<br>(Incl. Ref. #27) | 1        |
| 34       | 47-0610  | Tie Rod - Adjustable<br>(Incl. Ref. #7)      | 1        |
| *        | 80-2460  | Tie Rod - Fixed                              | 1        |
| 35       | 32151-48 | Ring - Retaining, External                   | 2        |
| 36       | 3296-4   | Nut - Lock                                   | 4        |
| 37       | 92-0876  | Guard - Front                                | 1        |
| 38       | 32144-14 | Screw - Thread Forming                       | 2        |
| 41       | 237-27   | Valve Stem w/Cap                             | 2        |
| 42       | 231-116  | Tire   | 2        |
| 43       | 28-2480  | Washer                                       | 2        |
| 44       | 61-9780  | Cap - Hub                                    | 2        |
| 45       | 3272-12  | Pin - Cotter                                 | 2        |
| †        | 232-44   | Tube - Inner                                 | 2        |

\*Not Illustrated

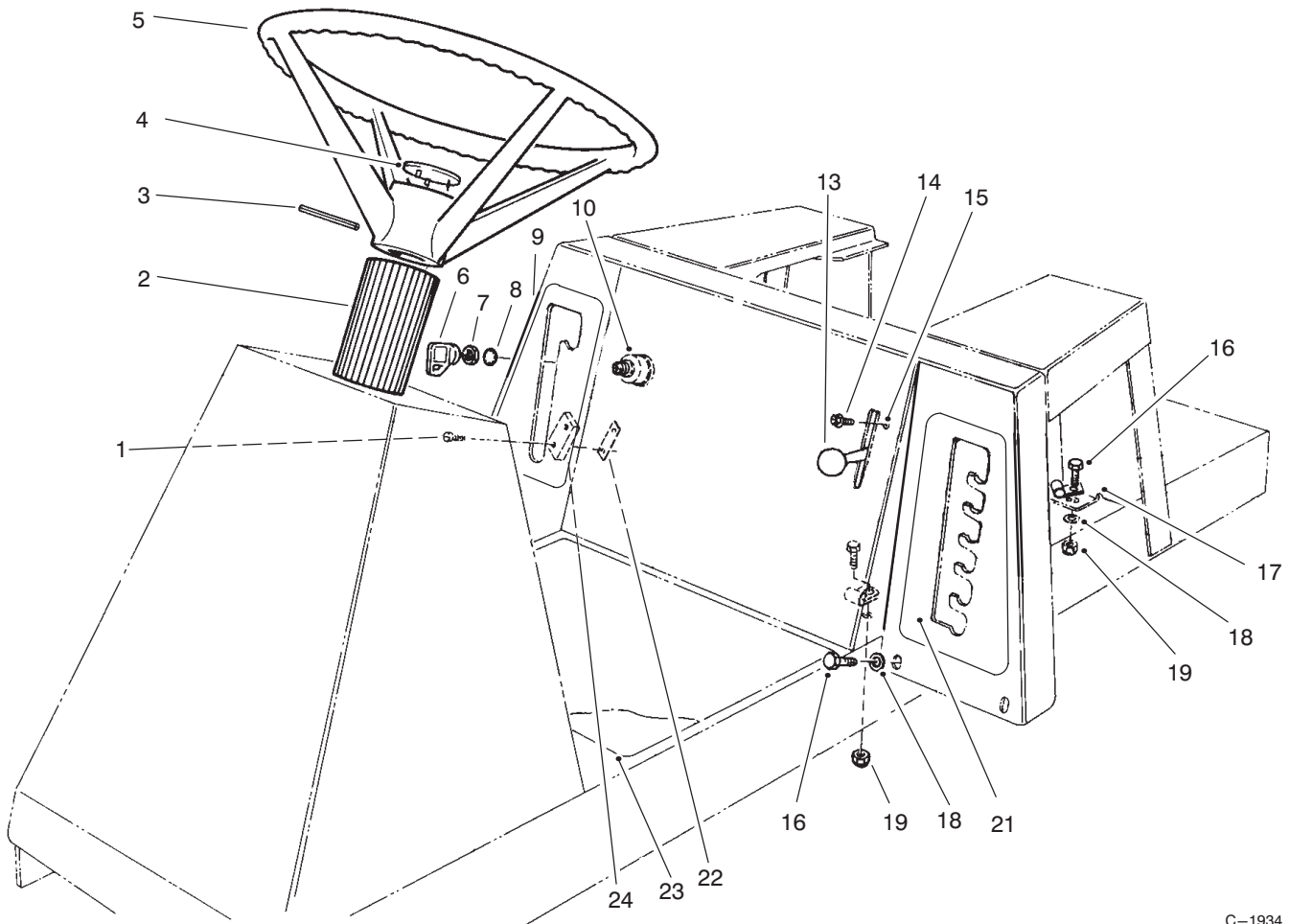
†Service Replacement Part



C-0439A

## BRAKE & CLUTCH ASSEMBLY

| Ref. No. | Part No. | Description                 | No. Used | Ref. No. | Part No. | Description              | No. Used |
|----------|----------|-----------------------------|----------|----------|----------|--------------------------|----------|
| 1        | 3272-6   | Pin - Cotter                | 3        | 11       | 56-7070  | Spring - Torsion, Clutch | 1        |
| 2        | 322-5    | Screw - Cap Hex. Hd.        | 1        | 12       | 47-0560  | Bracket - Clutch, Pedal  | 1        |
| 3        | 56-7240  | Bracket - Retaining, Spring | 1        | 13       | 3256-27  | Washer - Flat            | 3        |
| 4        | 3296-29  | Nut - Lock                  | 3        | 14       | 56-7650  | Tube - Pivot             | 1        |
| 5        | 65-2920  | Pad - Pedal, Foot           | 2        | 15       | 56-7570  | Rod - Engagement         | 1        |
| 6        | 62-3930  | Spring - Extension          | 1        | 16       | 47-0570  | Spacer - Pedal           | 3        |
| 7        | 322-5    | Screw - Cap Hex. Hd.        | 2        | 17       | 47-0550  | Bracket - Brake, Pedal   | 1        |
| 8        | 47-0770  | Shaft - Pivot, Pedal        | 1        | 18       | 56-7080  | Spring - Torsion, Brake  | 1        |
| 9        | 47-0780  | Retainer - Shaft            | 1        | 19       | 47-0540  | Pedal                    | 2        |
| 10       | 321-4    | Screw - Cap Hex. Hd.        | 1        |          |          |                          |          |

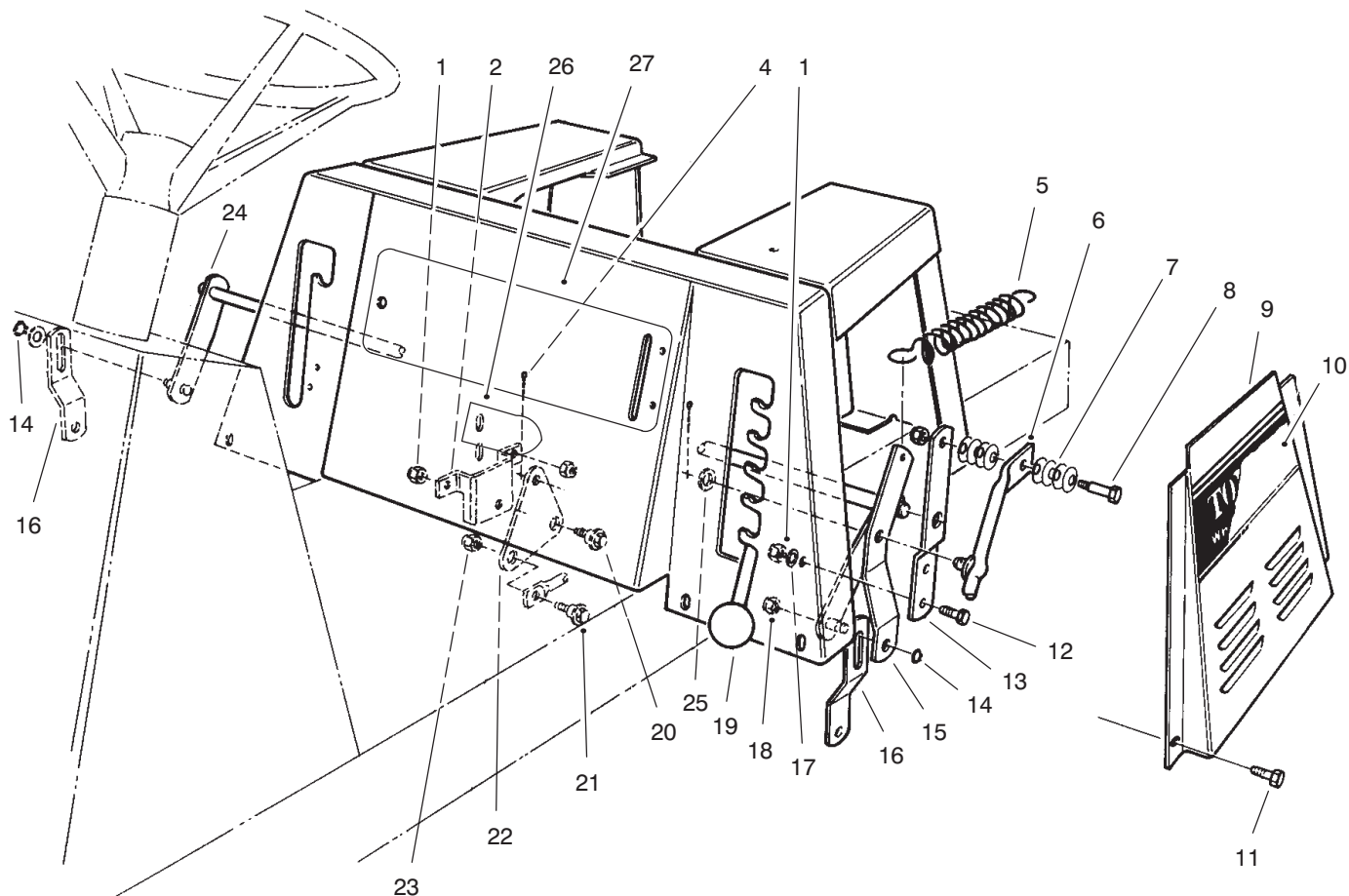


C-1934

## STEERING WHEEL, SWITCHES & DECALS

| Ref. No. | Part No. | Description                                | No. Used |
|----------|----------|--|----------|
| 1        | 147665   | Screw – Phillips Head                      | 2        |
| 2        | 66-6740  | Cover – Shaft, Steering                    | 1        |
| 3        | 32121-78 | Pin – Roll                                 | 1        |
| 4        | 92-7990  | Insert – Wheel, Steering                   | 1        |
| 5        | 49-3242  | Assy. – Wheel, Steering<br>(Incl. Ref. #4) | 1        |
| 6        | 63-8360  | Key  | 1        |
| 7        | 218-461  | Nut – Lock                                 | 1        |
| 8        | 3254-5   | Washer – Lock, Int. Tooth                  | 1        |
| 9        | 92-7244  | Decal – Deck Engage                        | 1        |
| 10       | 23-0660  | Switch – Ignition<br>(Incl. Ref. #6-8)     | 1        |

| Ref. No. | Part No. | Description                            | No. Used |
|----------|----------|--|----------|
| 13       | 233-25   | Knob                                   | 1        |
| 14       | 32104-76 | Screw – Self-Tapping                   | 2        |
| 15       | 92-0890  | Control – Throttle<br>(Incl. Ref. #13) | 1        |
| 16       | 322-5    | Screw – Cap Hex. Hd.                   | 8        |
| 17       | 2412-68  | Clamp                                  | 2        |
| 18       | 3256-23  | Washer – Flat                          | 7        |
| 19       | 3296-29  | Nut – Lock                             | 4        |
| 21       | 92-7245  | Decal – H.O.C.                         | 1        |
| 22       | 3290-354 | Nut – Double                           | 1        |
| 23       | 76-1090  | Decal – Instructions                   | 1        |
| 24       | 88-9931  | Switch – Micro                         | 1        |

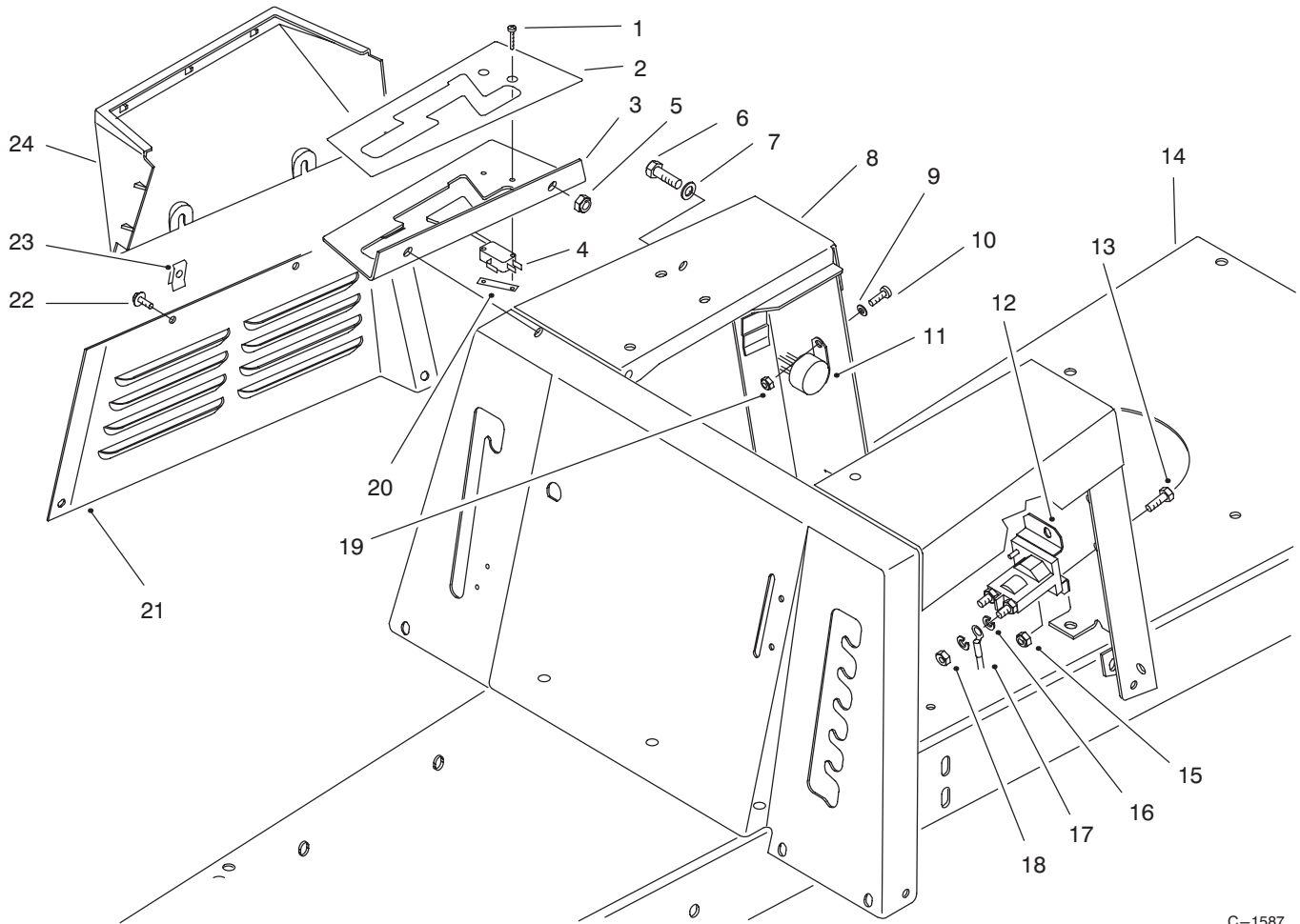


C-1935

## LINKAGE ASSEMBLY

| Ref. No. | Part No. | Description                | No. Used |
|----------|----------|----------------------------|----------|
| 1        | 3296-29  | Nut - Lock                 | 7        |
| 2        | 80-2310  | Bracket - Bell Crank Mount | 1        |
| 4        | 3272-6   | Pin - Cotter               | 2        |
| 5        | 62-3930  | Spring - Extension         | 1        |
| 6        | 47-1850  | Lever - Height-of-Cut      | 1        |
| 7        | 3290-413 | Washer - Belleville        | 8        |
| 8        | 28-0540  | Bolt - Shoulder            | 1        |
| 9        | 92-0878  | Panel L.H. - Base, Seat    | 1        |
| 10       | 92-7986  | Decal - L.H. (Model 70120) | 1        |
| 10       | 92-7985  | Decal - L.H. (Model 70080) | 1        |
| 11       | 321-4    | Screw - Cap Hex. Hd.       | 4        |
| 12       | 322-5    | Screw - Cap Hex. Hd.       | 2        |
| 13       | 47-1840  | Bracket - Height-of-Cut    | 1        |
| 14       | 32151-61 | Ring - Retaining           | 2        |

| Ref. No. | Part No. | Description               | No. Used |
|----------|----------|---------------------------|----------|
| 15       | 80-2320  | Bracket - H.O.C., Engage  | 1        |
| 16       | 63-5830  | Link - Suspension, Deck   | 2        |
| 17       | 3256-23  | Washer - Flat             | 4        |
| 18       | 3296-42  | Nut - Lock                | 1        |
| 19       | 233-48   | Knob                      | 1        |
| 20       | 19-1470  | Bolt - Shoulder           | 1        |
| 21       | 65-5670  | Bolt - Shoulder           | 1        |
| 22       | 80-2360  | Crank - Bell, Deck Engage | 1        |
| 23       | 3296-8   | Nut - Lock                | 1        |
| 24       | 56-7400  | Arm - Lever, H.O.C.       | 1        |
| 25       | 3256-26  | Washer - Flat             | 1        |
| 26       | 76-1340  | Decal - Made In USA       | 1        |
| 27       | 92-7243  | Decal - Control Panel     | 1        |

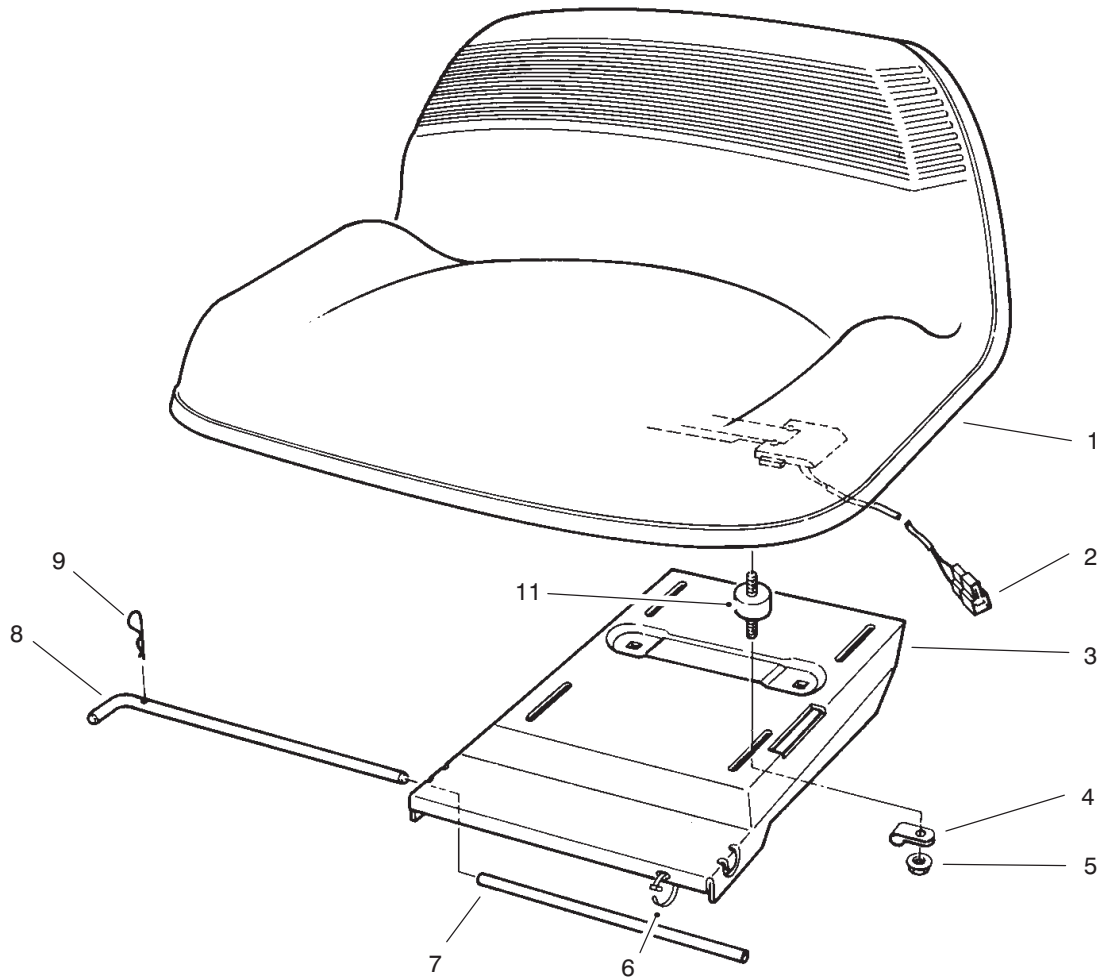


C-1587

## SEAT BODY & SIDE PANEL ASSEMBLY

| Ref. No. | Part No. | Description              | No. Used |
|----------|----------|--------------------------|----------|
| 1        | 147665   | Screw – Phillips Hd.     | 2        |
| 2        | 92-1751  | Decal – Shift Pattern    | 1        |
| 3        | 92-0895  | Gate – Shift             | 1        |
| 4        | 88-9930  | Switch – Micro, Short    | 1        |
| 5        | 3296-29  | Nut – Lock               | 2        |
| 6        | 322-5    | Screw – Cap Hex. Hd.     | 2        |
| 7        | 3256-23  | Washer – Flat            | 2        |
| 8        | 92-0866  | Body W.A. – Seat Support | 1        |
| 9        | 3256-14  | Washer – Flat            | 1        |
| 10       | 3290-134 | Screw – Machine          | 1        |
| 11       | 28-7890  | Module – Interlock       | 1        |
| 12       | 47-1910  | Solenoid                 | 1        |

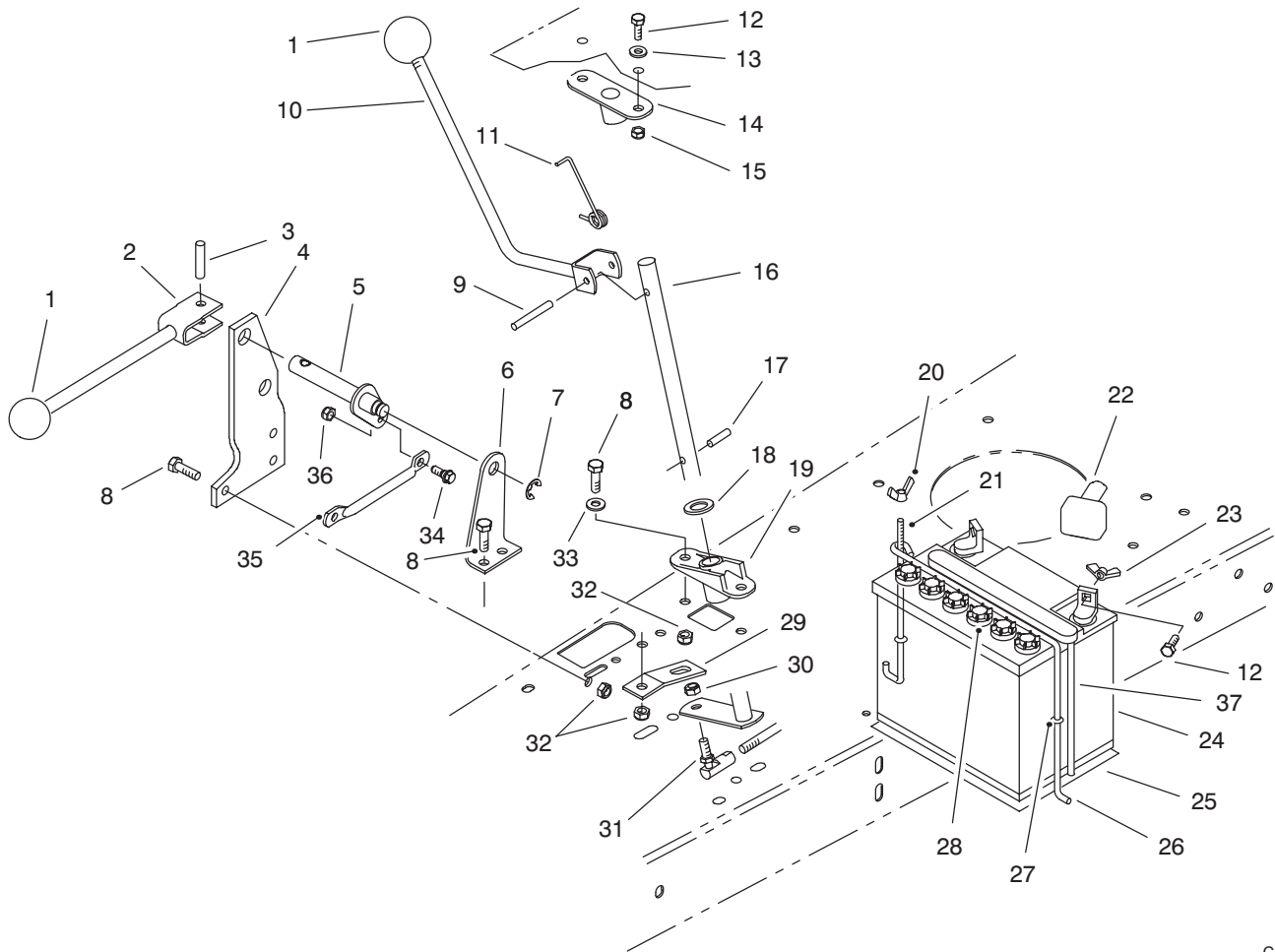
| Ref. No. | Part No.  | Description             | No. Used |
|----------|-----------|-------------------------|----------|
| 13       | 321-4     | Screw – Cap Hex. Hd.    | 2        |
| 14       | 92-0860   | Frame                   | 1        |
| 15       | 3296-42   | Nut – Lock              | 2        |
| 16       | 3253-3    | Washer – Lock           | 4        |
| 17       | 56-7670   | Cable – Positive        | 1        |
| 18       | 3218-1    | Nut – Jam               | 2        |
| 19       | 3296-2    | Nut – Lock              | 1        |
| 20       | 3290-354  | Nut – Double            | 1        |
| 21       | 92-0877   | Panel – Seat Base, R.H. | 1        |
| 22       | 32144-112 | Screw – Sems            | 2        |
| 23       | 3290-191  | Nut – Speed             | 2        |
| 24       | 88-9800   | Cover – Gate, Shift     | 1        |



C-1936

## SEAT ASSEMBLY

| Ref. No. | Part No. | Description        | No. Used | Ref. No. | Part No. | Description             | No. Used |
|----------|----------|--------------------|----------|----------|----------|-------------------------|----------|
| 1        | 88-3950  | Assembly - Seat    | 1        | 6        | 3290-378 | Tie - Cable             | 1        |
| 2        | 38-1420  | Switch - Interlock | 1        | 7        | 63-5670  | Tube - Bumper, Seat Rod | 1        |
| 3        | 63-5540  | Base - Seat        | 1        | 8        | 80-2620  | Rod - Base, Seat        | 1        |
| 4        | 2412-68  | Clamp - Wire       | 1        | 9        | 3290-307 | Pin - Cotter, Hair      | 1        |
| 5        | 32128-20 | Nut - Flange Hd.   | 4        | 11       | 62-5480  | Isolator - Seat         | 4        |



C-1601

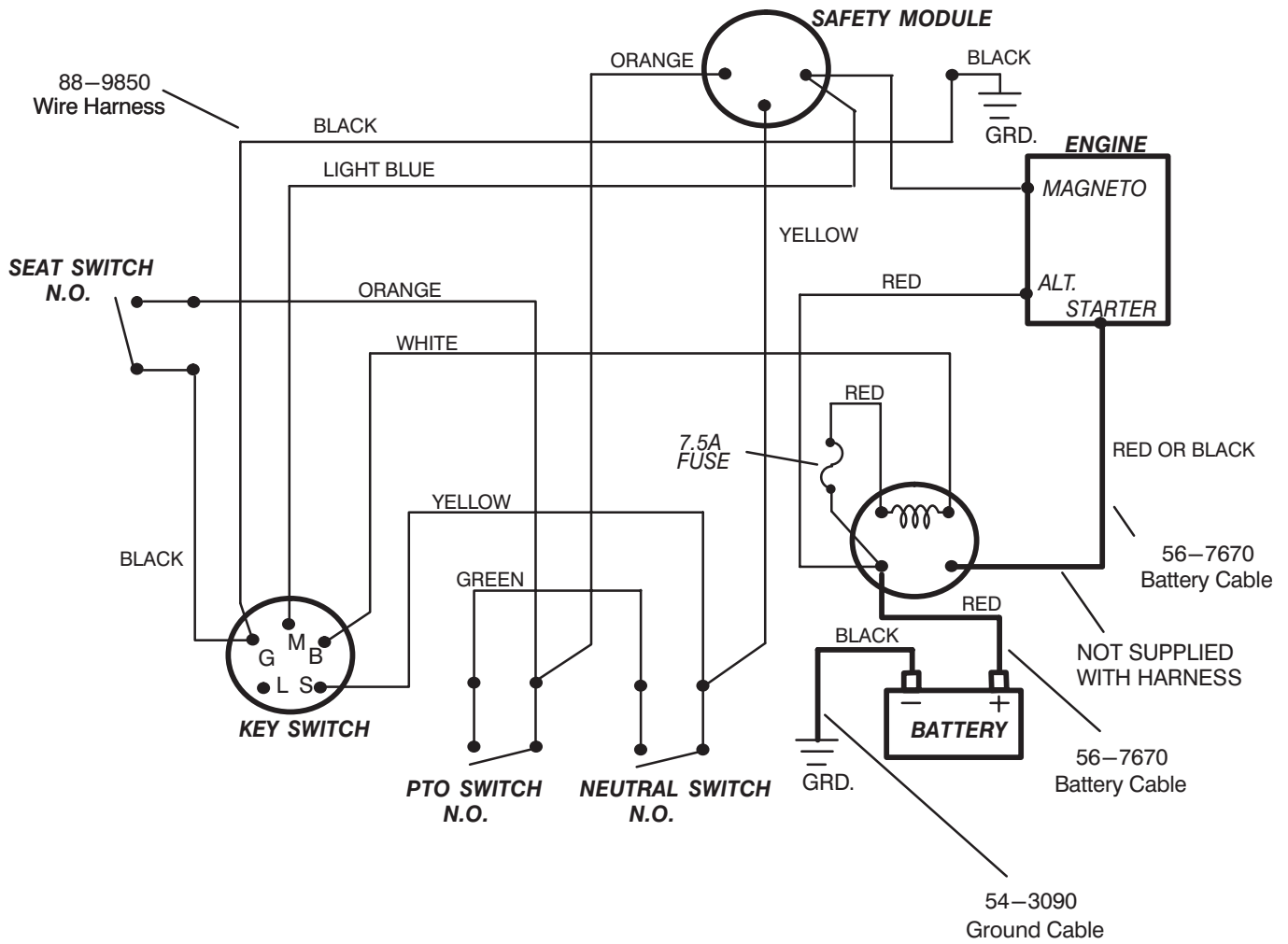
## TRANSMISSION LINKAGE ASSEMBLY

| Ref. No. | Part No. | Description            | No. Used |
|----------|----------|------------------------|----------|
| 1        | 233-48   | Knob                   | 2        |
| 2        | 80-2400  | Lever W.A. - Engage    | 1        |
| 3        | 32121-25 | Pin - Roll             | 1        |
| 4        | 80-2350  | Pivot - Outer          | 1        |
| 5        | 80-2370  | Shaft W.A. - Pivot     | 1        |
| 6        | 80-2340  | Bracket - Pivot, Inner | 1        |
| 7        | 32120-47 | Ring - Retaining       | 1        |
| 8        | 322-5    | Screw - Cap Hex. Hd.   | 4        |
| 9        | 32121-78 | Pin - Roll             | 1        |
| 10       | 92-0884  | Lever W.A. - Shaft     | 1        |
| 11       | 92-0894  | Spring - Torsion       | 1        |
| 12       | 321-4    | Screw - Cap Hex. Hd.   | 2        |
| 13       | 3256-22  | Washer - Flat          | 2        |
| 14       | 92-0888  | Support - Shift, Upper | 1        |
| 15       | 3296-42  | Nut - Lock             | 2        |
| 16       | 92-0891  | Shaft W. A. - Shift    | 1        |
| 17       | 32121-16 | Pin - Roll             | 1        |
| 18       | 257-11   | Washer                 | 1        |
| 19       | 92-0887  | Support - Shift, Lower | 1        |

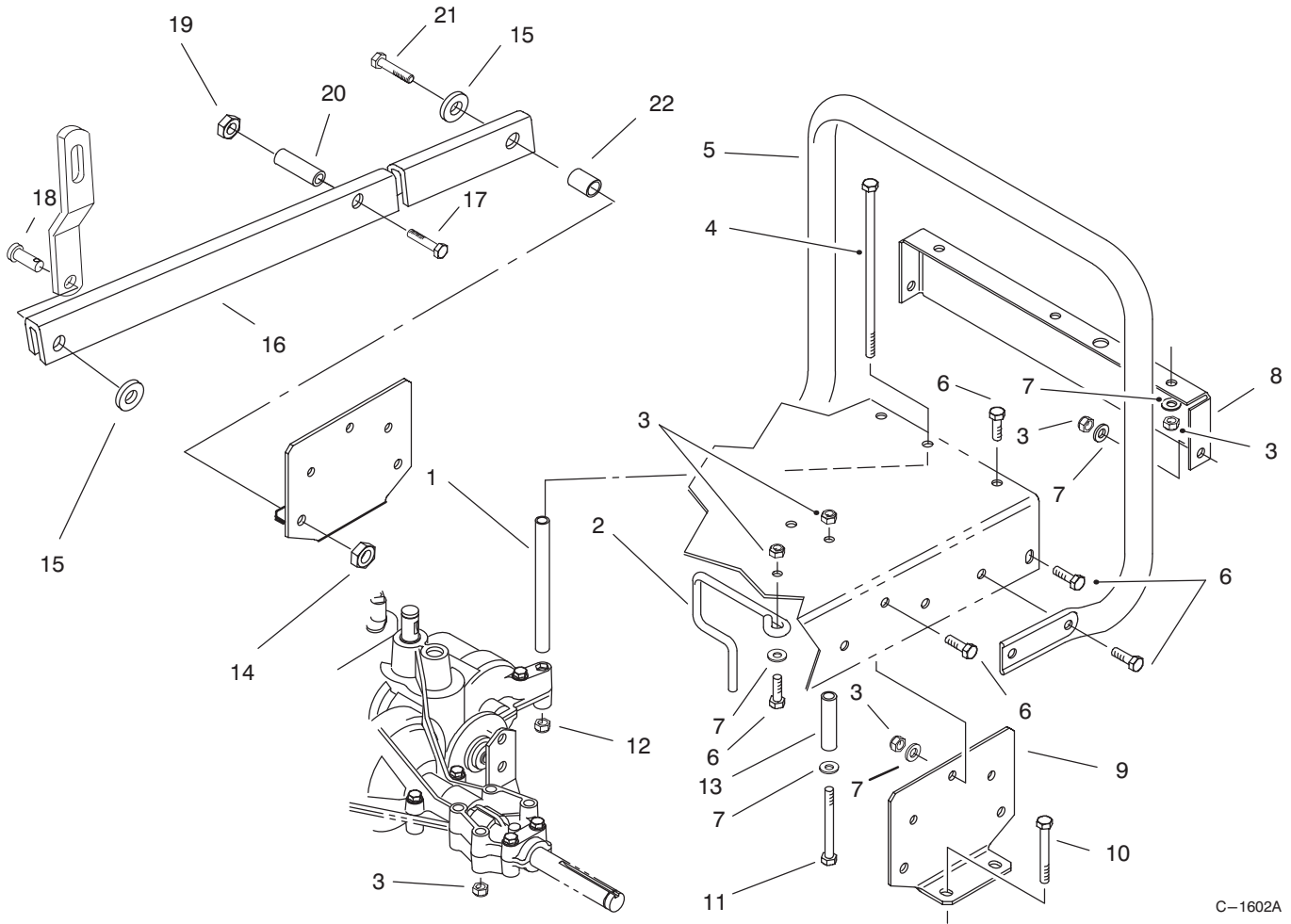
| Ref. No. | Part No. | Description                                | No. Used |
|----------|----------|--|----------|
| 20       | 32103-12 | Nut - Wing                                 | 1        |
| 21       | 56-7720  | Post - Battery                             | 1        |
| 22       | 28-8080  | Boot - Terminal                            | 1        |
| 23       | 32103-22 | Nut - Wing                                 | 2        |
| 24       | 80-2600  | Battery - 12 Volt<br>(Incl. Ref. #28 & 37) | 1        |
| 25       | 62-4300  | Pad - Battery                              | 1        |
| 26       | 56-7710  | Hold Down - Battery                        | 1        |
| 27       | 237-143  | O-Ring                                     | 2        |
| 28       | 218-560  | Cap - Battery                              | 6        |
| 29       | 92-0896  | Retainer - Spring                          | 1        |
| 30       | 3296-4   | Nut - Lock                                 | 1        |
| 31       | 2411-32  | Ball Joint                                 | 1        |
| 32       | 3296-29  | Nut - Lock                                 | 4        |
| 33       | 3256-23  | Washer - Flat                              | 2        |
| 34       | 65-5670  | Screw - Shoulder                           | 1        |
| 35       | 80-2330  | Link - Bell Crank                          | 1        |
| 36       | 3296-8   | Nut - Lock                                 | 1        |
| 37       | 56-2540  | Tube - Vent, Battery                       | 1        |



# ELECTRICAL SCHEMATIC







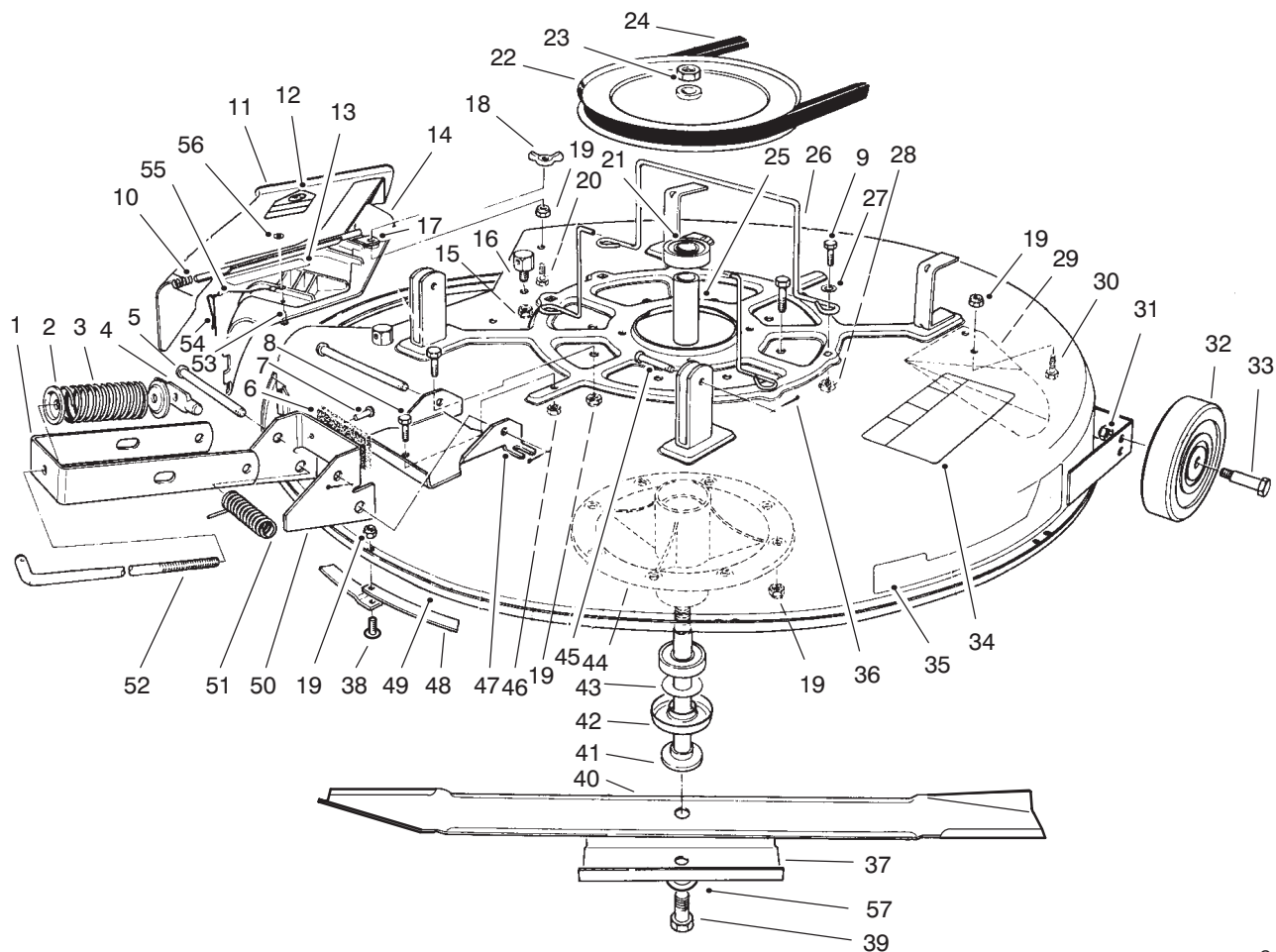
C-1602A

## STAND BAR ASSEMBLY

| Ref. No. | Part No. | Description          | No. Used |
|----------|----------|----------------------|----------|
| 1        | 92-0897  | Spacer               | 1        |
| 2        | 92-0898  | Guide - Belt         | 1        |
| 3        | 3296-29  | Nut - Lock           | 17       |
| 4        | 322-50   | Screw - Cap Hex. Hd. | 1        |
| 5        | 92-0864  | Standbar             | 1        |
| 6        | 322-5    | Screw - Cap Hex. Hd. | 15       |
| 7        | 3256-23  | Washer - Flat        | 12       |
| 8        | 92-0861  | Frame - Rear         | 1        |
| 9        | 92-0865  | Support - Axle       | 2        |
| 10       | 322-12   | Screw - Cap Hex. Hd. | 4        |
| 11       | 322-14   | Screw - Cap Hex. Hd. | 2        |
| 12       | 3296-47  | Nut - Lock           | 1        |

| Ref. No. | Part No. | Description           | No. Used |
|----------|----------|-----------------------|----------|
| 13       | 76-1560  | Spacer                | 2        |
| 14       | 3296-59  | Nut - Lock            | 3        |
| 15       | 3256-24  | Washer - Flat         | 4        |
| 16       | 76-1540  | Arm - Suspension R.H. | 1        |
| *        | 76-1550  | Arm - Suspension L.H. | 1        |
| 17       | 323-14   | Screw - Hex Hd. Cap   | 2        |
| 18       | 283-42   | Pin - Clevis          | 2        |
| 19       | 3296-39  | Nut - Lock            | 1        |
| 20       | 76-1560  | Spacer - Split        | 2        |
| 21       | 323-9    | Screw - Hex Hd. Cap   | 2        |
| 22       | 56-7430  | Pin - Support         | 2        |

\*Not Illustrated

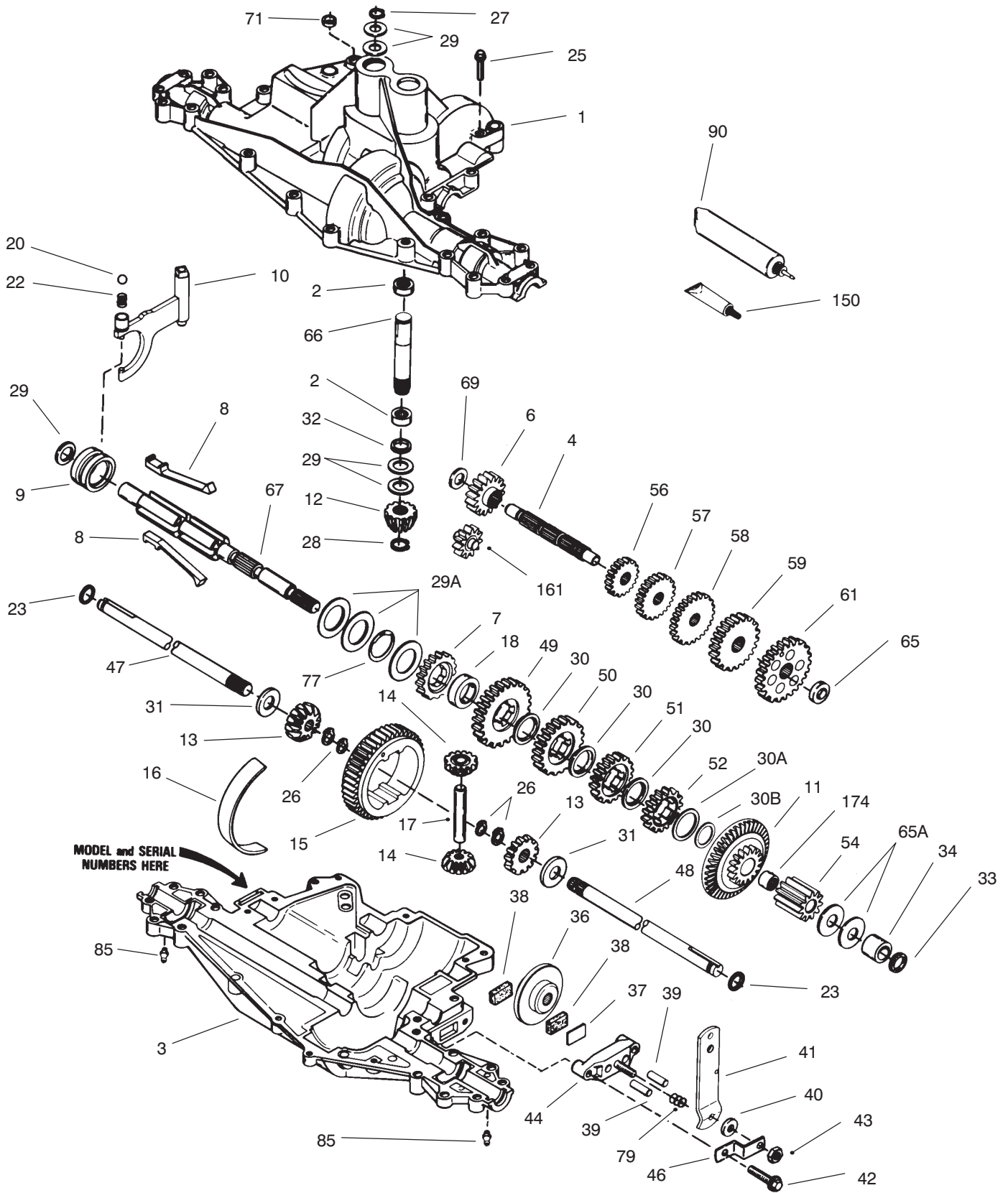


C-0792B

## MOWER ASSEMBLY – RECYCLER

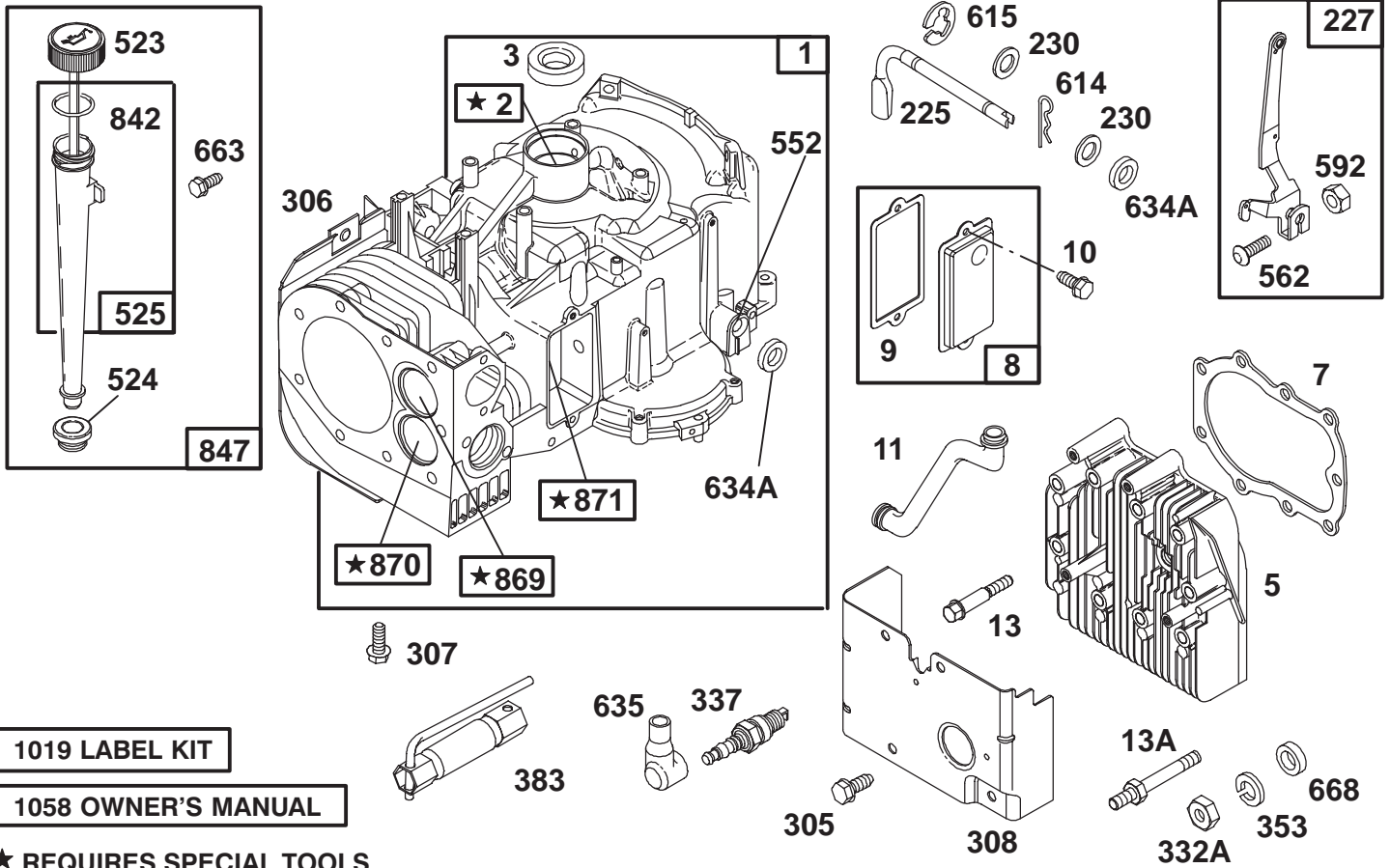
| Ref. No. | Part No. | Description                                     | No. Used | Ref. No. | Part No. | Description                           | No. Used |
|----------|----------|---|----------|----------|----------|---------------------------------------|----------|
| 1        | 47-1180  | Bracket – Engagement                            | 1        | 29       | 80-2630  | Kicker – 32"                          | 4        |
| 2        | 47-1140  | Retainer – Spring, Top                          | 2        | 30       | 322-3    | Screw – Cap Hex. Hd.                  | 7        |
| 3        | 47-0960  | Spring – Compression                            | 1        | 31       | 3296-39  | Nut – Lock                            | 2        |
| 4        | 47-1200  | Shaft – Adjusting                               | 1        | 32       | 61-9760  | Wheel – Deck                          | 2        |
| 5        | 80-2570  | Pin – Clevis                                    | 2        | 33       | 56-6590  | Bolt – Wheel                          | 2        |
| 6        | 80-2550  | Pad – Brake                                     | 1        | 34       | 66-1340  | Decal – Danger                        | 1        |
| 7        | 3290-282 | Rivet   | 2        | 35       | 92-9521  | Decal – Recycler                      | 1        |
| 8        | 321-4    | Screw – Cap Hex. Hd.                            | 1        | 36       | 3272-6   | Pin – Cotter                          | 2        |
| 9        | 322-5    | Screw – Cap Hex. Hd.                            | 12       | 37       | 80-4570  | Stiffener – Blade                     | 1        |
| 10       | 28-8010  | Spring – Torsion                                | 1        | 38       | 32122-14 | Screw – Truss, Phillips Hd.           | 8        |
| 11       | 44-5930  | Assembly – Deflector<br>(Incl. Ref. #12)        | 1        | 39       | 26-0671  | Bolt – Blade                          | 1        |
| 12       | 54-9220  | Decal – Caution, Deflector                      | 1        | 40       | 80-4430  | Blade – Recycler                      | 1        |
| 13       | 68-3650  | Decal – Warning, Deflector                      | 1        | 41       | 80-4350  | Shaft – Spindle                       | 1        |
| 14       | 82-6150  | Assy. – Cover, Discharge<br>(Incl. Ref. #53-56) | 1        | 42       | 80-4370  | Shield – Bearing                      | 1        |
| 15       | 3296-59  | Nut – Lock                                      | 1        | 43       | 80-4390  | Spacer – Hardened                     | 1        |
| 16       | 28-7350  | Post – Pivot                                    | 1        | 44       | 56-7030  | Body – Spindle                        | 1        |
| 17       | 83-7010  | Brace – Cover, Rear                             | 1        | 45       | 283-2    | Pin – Clevis                          | 2        |
| 18       | 32103-2  | Nut – Wing                                      | 1        | 46       | 3296-8   | Nut – Lock                            | 1        |
| 19       | 3296-29  | Nut – Lock                                      | 24       | 47       | 80-2560  | Plate – Deck, Brake Mtg.              | 1        |
| 20       | 322-6    | Screw – Cap Hex. Hd.                            | 1        | 48       | 80-4490  | Ring – Deck                           | 4        |
| 21       | 251-297  | Bearing   | 2        | 49       | 14-9999  | Deck – Cutting, Recycler              | 1        |
| 22       | 80-4470  | Pulley  | 1        | 50       | 80-2530  | Assembly – Brake<br>(Incl. Ref. #6-7) | 1        |
| 23       | 3219-7   | Nut – Hex. Hd.                                  | 1        | 51       | 40-6230  | Spring – Torsion                      | 1        |
| 24       | 92-0875  | V-Belt  | 1        | 52       | 80-2580  | Rod – Adjusting                       | 1        |
| 25       | 83-7020  | Spacer – Bearing                                | 1        | 53       | 3290-282 | Rivet                                 | 2        |
| 26       | 60-9730  | Guide – Belt                                    | 2        | 54       | 28-8130  | Pin – Chute, Locking                  | 1        |
| 27       | 3256-23  | Washer – Flat                                   | 4        | 55       | 28-8070  | Lanyard                               | 1        |
| 28       | 3290-496 | Nut – Retainer                                  | 4        | 56       | 3256-49  | Washer – Flat                         | 1        |
|          |          |   |          | 57       | 3290-465 | Washer – Belleville                   | 1        |

# PEERLESS TRANSAXLE MODEL NO. 915-019



# PEERLESS TRANSAXLE MODEL NO. 915-019

| Ref. No. | Part No. | Description  | No. Used | Ref. No. | Part No. | Description                                 | No. Used |
|----------|----------|--|----------|----------|----------|---|----------|
| 1        | 772117   | Transaxle Cover  | 1        | 38       | 790006   | Brake Pad                                   | 2        |
| 2        | 780086   | Needle Bearing   | 2        | 39       | 786026   | Dowel Pin                                   | 2        |
| 3        | 770114   | Transaxle Case   | 1        | 40       | 792076   | Washer                                      | 1        |
| 4        | 776300   | Countershaft   | 1        | 41       | 790045   | Brake Lever                                 | 1        |
| 6        | 778281   | Spur Gear (16 Teeth)                                       | 1        | 42       | 792073   | Screw                                       | 2        |
| 7        | 778122A  | Spur Gear (22 Teeth)                                       | 1        | 43       | 792075   | Locknut                                     | 1        |
| 8        | 792133   | Shift Key  | 4        | 44       | 790025   | Brake Pad Holder                            | 1        |
| 9        | 784352   | Shift Collar   | 1        | 46       | 786086   | Brake Lever Bracket                         | 1        |
| 10       | 784365   | Shift Rod & Fork   | 1        | 47       | 774930   | Axle (16-3/4" lg.)                          | 1        |
| 11       | 778290   | Bevel Gear & Bearing<br>(44/16 Teeth)<br>(Incl. Ref. #174) | 1        | 48       | 774931   | Axle (11-9/16" lg.)<br>(Incl. Ref. #26)     | 1        |
| 12       | 778262   | Bevel Pinion (14 Teeth)                                    | 1        | 49       | 778124A  | Spur Gear (30 Teeth)                        | 1        |
| 13       | 778221   | Bevel Gear (16 Teeth)                                      | 2        | 50       | 778123A  | Spur Gear (25 Teeth)                        | 1        |
| 14       | 778068   | Differential Pinion  | 2        | 51       | 778122A  | Spur Gear (22 Teeth)                        | 1        |
| 15       | 778260   | Ring Gear  | 1        | 52       | 778273   | Spur Gear (19 Teeth)                        | 1        |
| 16       | 786150   | Bearing Strip  | 1        | 54       | 778263   | Spur Gear (11 Teeth)                        | 1        |
| 17       | 78139    | Drive Pin  | 1        | 56       | 778126A  | Spur Gear (20 Teeth)                        | 1        |
| 18       | 786147   | Neutral Spacer   | 1        | 57       | 778127A  | Spur Gear (25 Teeth)                        | 1        |
| 20       | 792139   | Ball (3/8" dia.)   | 1        | 58       | 778128A  | Spur Gear (28 Teeth)                        | 1        |
| 22       | 792142   | Spring   | 1        | 59       | 778129A  | Spur Gear (30 Teeth)                        | 1        |
| 23       | 788061   | Seal Ring  | 2        | 61       | 778265   | Spur Gear (34 Teeth)                        | 1        |
| 25       | 792073   | Screw  | 17       | 65       | 780162   | Washer                                      | 1        |
| 26       | 792125   | Retaining Ring (pkg. of 2)                                 | 4        | 65A      | 780160   | Washer                                      | 2        |
| 27       | 792035   | Retaining Ring   | 1        | 66       | 776299   | Input Shaft (3.522" lg.)                    | 1        |
| 28       | 788040   | Retaining Ring   | 1        | 67       | 776352   | Shifter & Brake Shaft                       | 1        |
| 29       | 780072   | Washer   | 5        | 69       | 780161   | Thrust Washer                               | 1        |
| 29A      | 780090   | Thrust Washer  | 3        | 71       | 788069   | Square Cut Ring                             | 1        |
| 30       | 780108   | Washer   | 3        | 77       | 788078A  | Inverted Retaining Ring<br>(pkg. of 2)      | 1        |
| 30A      | 789145   | Washer   | 1        | 79       | 792144   | Spring                                      | 1        |
| 30B      | 780178   | Washer   | 1        | 90       | 788067B  | Grease<br>(32 oz. btl. Bentonite<br>grease) | 1        |
| 31       | 780001   | Washer   | 2        | 150      | 510334   | Gasket Eliminator<br>(Loctite #515)         | 1        |
| 32       | 792001   | O-Ring   | 1        | 161      | 776302   | Reverse Idler Assembly                      | 1        |
| 33       | 788076   | O-Ring   | 1        | 174      | 780085   | Needle Bearing                              | 1        |
| 34       | 780159   | Bushing  | 1        |          |          |   |          |
| 36       | 790071   | Brake Disk   | 1        |          |          |   |          |
| 37       | 790007   | Brake Pad Plate  | 1        |          |          |   |          |



1019 LABEL KIT

1058 OWNER'S MANUAL

★ REQUIRES SPECIAL TOOLS TO INSTALL. SEE REPAIR INSTRUCTION MANUAL.

Assemblies include all parts shown in frames.

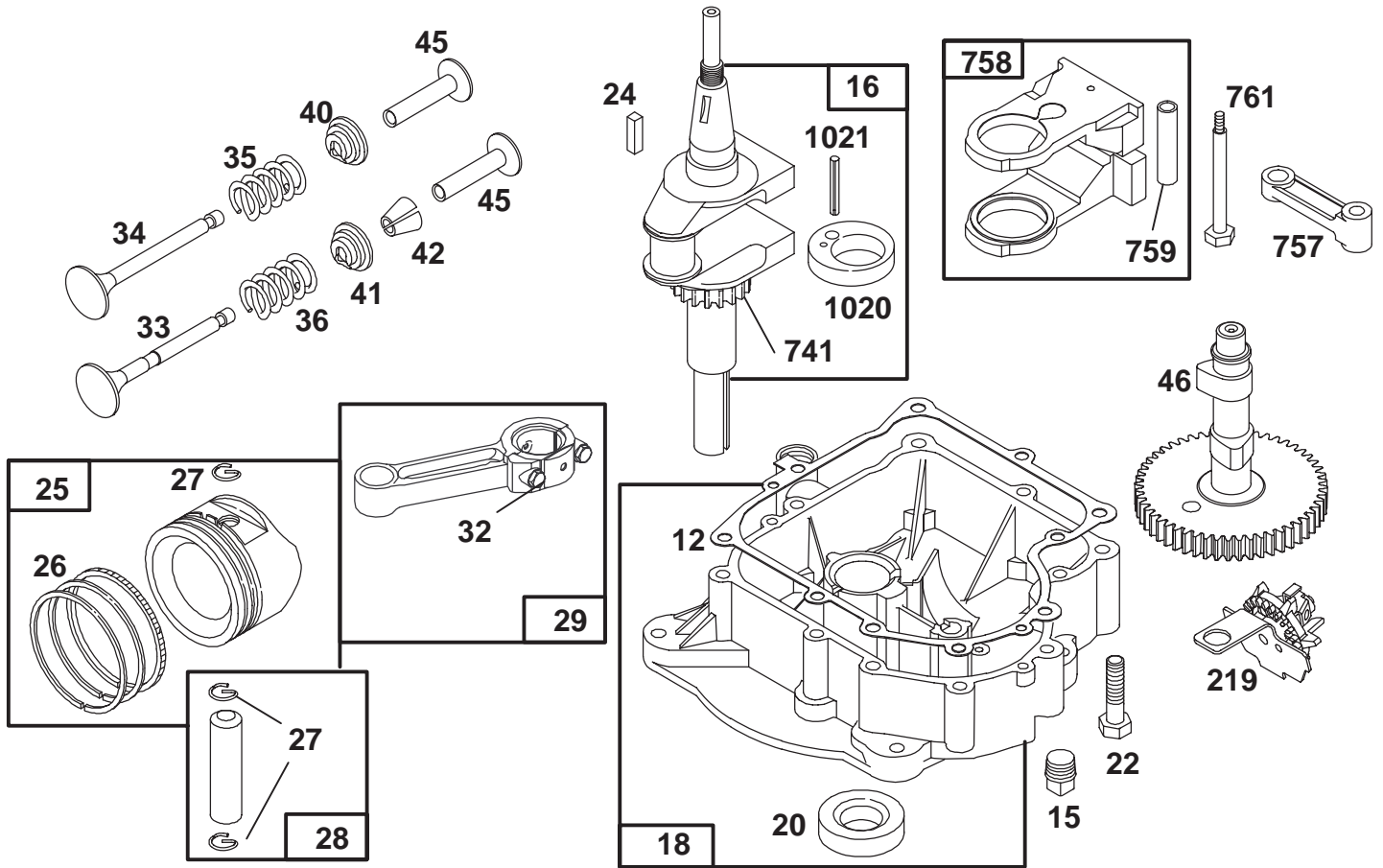
## ENGINE BRIGGS & STRATTON MODEL 28B707-0126-01

| Ref. No. | Part No. | Description           | No. Used |
|----------|----------|-----------------------|----------|
| 1        | 496413   | Cylinder Assembly     |          |
| 2        | 399265   | Bearing—Cylinder      |          |
| ★3       | 391086   | Seal—Oil              |          |
| 5        | 494240   | Head—Cylinder         |          |
| ★7       | 271866   | Gasket—Cylinder Head  |          |
| 8        | 495735   | Breather Assembly     |          |
| ★9       | 27803    | Gasket—Valve Cover    |          |
| 10       | 94621    | Screw—Sem             |          |
| 11       | 281246   | Tube—Breather         |          |
| 13       | 94622    | Screw—Cylinder Head   |          |
| 13A      | 94776    | Stud—Cylinder Head    |          |
| 225      | 231058   | Crank—Governor        |          |
| 227      | 493935   | Lever Assy.—Governor  |          |
| 230      | 94742    | Washer—Governor Lever |          |
| 305      | 94786    | screw—Hex. Head       |          |
| 306      | 224545   | Shield—Cylinder       |          |
| 307      | 94386    | Screw—Self Tap        |          |
| 308      | 491490   | Cover—Cylinder Head   |          |
| 332A     | 94314    | Nut—Hex.              |          |
| 337      | 802592   | Plug—Spark            |          |
| 353      | 94315    | Washer—Lock           |          |
| 383      | 89838    | Wrench—Spark Plug     |          |

| Ref. No. | Part No. | Description                                    | No. Used |
|----------|----------|--|----------|
| 523      | 495229   | Cap—Oil Filler                                 |          |
| ★524     | 281370   | Seal—Filler Tube                               |          |
| 525      | 496068   | Tube—Oil Filler                                |          |
| 552      | 231597   | Bushing—Gov. Crank                             |          |
| 562      | 92613    | Bolt—Governor Lever                            |          |
| 592      | 231082   | Nut—Hex.                                       |          |
| 614      | 93306    | Pin—Cotter                                     |          |
| 615      | 93307    | Retainer—E-Ring                                |          |
| ★634A    | 491323   | Seal—Governor                                  |          |
| 635      | 66538    | Elbow—Spark Plug                               |          |
| 663      | 94073    | Screw—Hex. Head                                |          |
| 668      | 231109   | Spacer   |          |
| ★842     | 270920   | Seal—Oil Filler Cap                            |          |
| 847      | 496367   | Fill Group—Oil                                 |          |
| 869      | 261463   | Seat—Intake Valve                              |          |
| 870      | 213316   | Seat—Exhaust Valve                             |          |
| 871      | 261961   | Guide—Exhaust Valve                            |          |
|          |          | <b>Note:</b> 231218 Guide—Intake Valve (Brass) |          |
| 1019     | 491254   | Label Kit                                      |          |
| 1058     | 272697   | Owner's Manual                                 |          |

★ Included in Gasket Set—Part No. 494241.  
 ◆ Included in Carburetor Gasket Set—Part No. 494385.

● Included in Carburetor Kit—Part No. 496622.



Assemblies include all parts shown in frames.

## ENGINE BRIGGS & STRATTON MODEL 28B707-0126-01

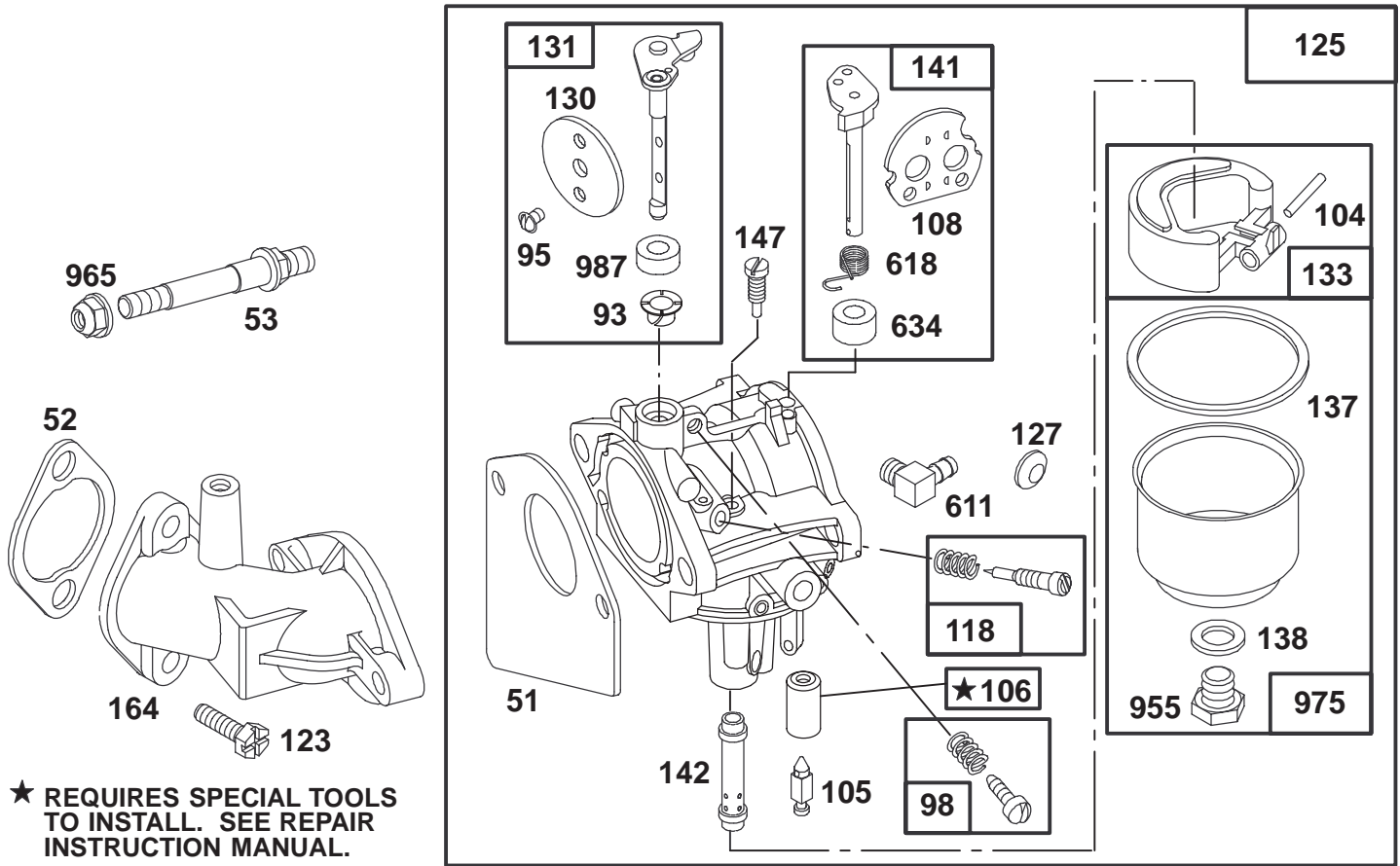
| Ref. No. | Part No. | Description                                   | No. Used |
|----------|----------|---|----------|
| ★12      | 271916   | Gasket—Crankcase (.015" Thick)                |          |
| ★        | 271997   | Gasket—Crankcase (.005" Thick)                |          |
| ★        | 271996   | Gasket—Crankcase (.009" Thick)                |          |
| 15       | 94239    | Plug—Oil Drain                                |          |
| 16       | 495162   | Crankshaft                                    |          |
|          |          | <b>Note:</b> For Timing Gear Key—Order 94196. |          |
| 18       | 494238   | Base—Engine                                   |          |
| ★20      | 291675   | Seal—Oil                                      |          |
| 22       | 94624    | Screw—Sem                                     |          |
| 24       | 222698   | Key—Flywheel                                  |          |
| 25       | 394661   | Piston Assembly (Standard)                    |          |
|          | 394662   | Piston Assy. (.010" O.S.)                     |          |
|          | 394663   | Piston Assy. (.020" O.S.)                     |          |
|          | 394664   | Piston Assy. (.030" O.S.)                     |          |
| 26       | 391780   | Ring Set (Standard)                           |          |
|          | 392331   | Ring Set (Chrome Std.)                        |          |
|          | 391781   | Ring Set (.010" O.S.)                         |          |
|          | 391782   | Ring Set (.020" O.S.)                         |          |
|          | 391783   | Ring Set (.030" O.S.)                         |          |

| Ref. No. | Part No. | Description             | No. Used |
|----------|----------|-------------------------|----------|
| 27       | 260924   | Lock—Piston Pin         |          |
| 28       | 299691   | Pin—Piston (Standard)   |          |
|          | 391286   | Pin—Piston (.005" O.S.) |          |
| 29       | 490348   | Rod—Connecting          |          |
|          | 490469   | Rod—Conn. (.020" U.S.)  |          |
| 32       | 94671    | Screw—Conn. Rod         |          |
| 33       | 262246   | Valve—Exhaust           |          |
| 34       | 262247   | Valve—Intake            |          |
| 35       | 65906    | Spring—Valve            |          |
| 36       | 26828    | Spring—Valve            |          |
| 40       | 221596   | Retainer—Intake Valve   |          |
| 41       | 292260   | Rotocoil—Ex. Valve      |          |
| 42       | 494553   | Retainer—Rotocoil       |          |
| 45       | 262248   | Tappet—Valve            |          |
| 46       | 212897   | Gear—Cam                |          |
| 219      | 490815   | Gear—Gov.               |          |
| 741      | 262932   | Gear—Timing             |          |
| 757      | 213998   | Link—Counterweight      |          |
| 758      | 399891   | Counterweight Assy.     |          |
| 759      | 298909   | Pin—Counterweight       |          |
| 761      | 94593    | Screw—Counterweight     |          |
| 1020     | 262243   | Eccentric               |          |
| 1021     | 94160    | Pin—Eccentric           |          |

★ Included in Gasket Set—Part No. 494241.

◆ Included in Carburetor Gasket Set—Part No. 494385.

● Included in Carburetor Kit—Part No. 496622.



Assemblies include all parts shown in frames.

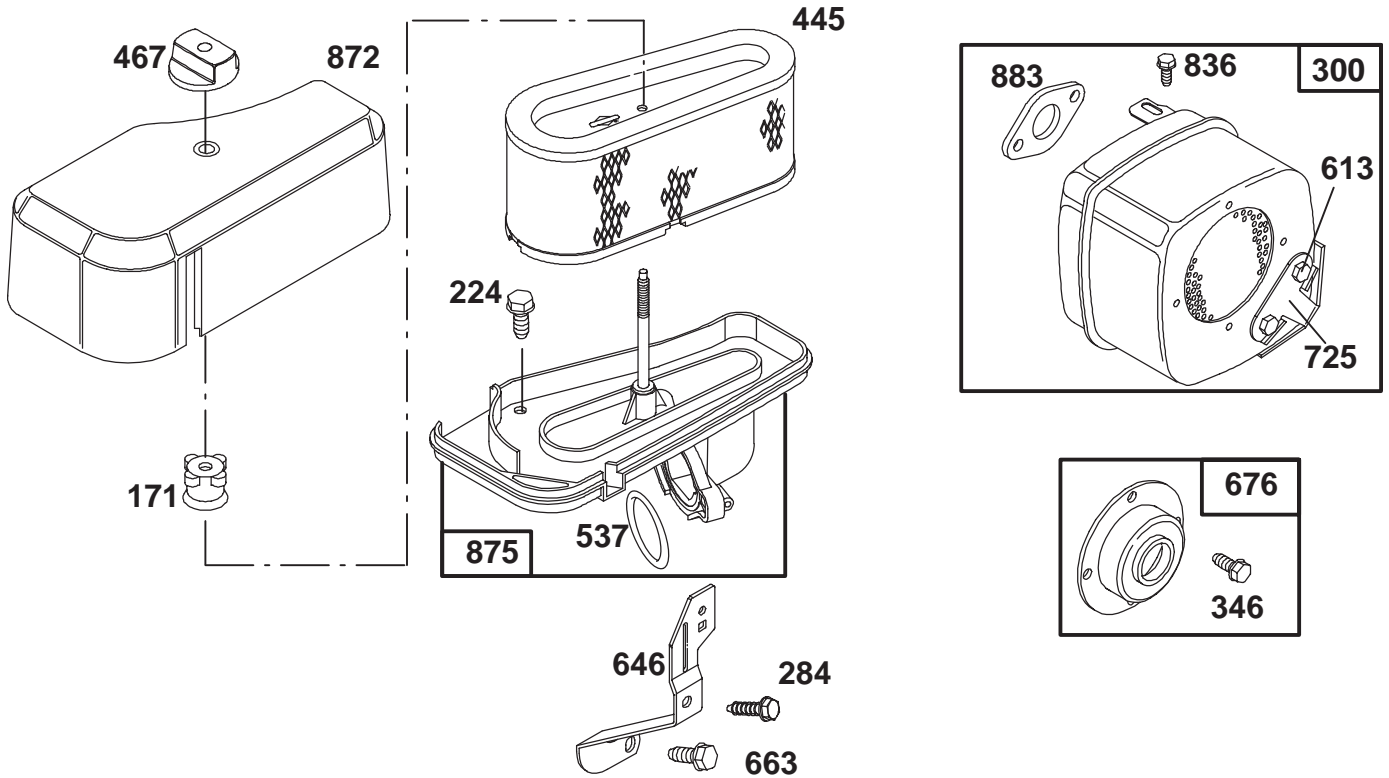
## ENGINE BRIGGS & STRATTON MODEL 28B707-0126-01

| Ref. No. | Part No. | Description                       | No. Used |
|----------|----------|-----------------------------------|----------|
| ◆51      | 272465   | Gasket—Carburetor                 |          |
| ★52      | 272554   | Gasket—Carburetor                 |          |
| 53       | 94637    | Stud—Carb. Mtg.                   |          |
| ●93      | 281346   | Bushing—Throttle Shaft            |          |
| ●95      | 94098    | Screw—Throttle                    |          |
| 98       | 495800   | Screw—Idle Adjust                 |          |
| ●104     | 231789   | Pin—Float Hinge                   |          |
| ●105     | 231855   | Valve—Inlet Needle                |          |
| ●106     | 231854   | Seat—Inlet                        |          |
| 108      | 224666   | Valve—Choke                       |          |
| 118      | 496589   | Valve—Needle                      |          |
| 123      | 94616    | Screw—Elbow Mtg.                  |          |
| 125      | 496592   | Carburetor                        |          |
| ●127     |          | Plug—Welch<br>(Sold in Kit Only). |          |
| 130      | 224668   | Valve—Throttle                    |          |
| 131      | 494885   | Shaft—Throttle                    |          |
| 133      | 494381   | Float—Carburetor                  |          |

| Ref. No. | Part No. | Description  | No. Used |
|----------|----------|--|----------|
| ◆137     | 281165   | Gasket—Float Bowl  |          |
| ◆138     | 281164   | Washer—Float Bowl  |          |
| 141      | 495931   | Shaft—Choke  |          |
| ●142     | 496519   | Nozzle—Carburetor<br><b>Note:</b> 496623 Nozzle—Carb.<br>(High Altitude)<br><b>Includes:</b><br>281164 Washer—Float Bowl |          |
| ●147     | 231794   | Pilot—Jet  |          |
| 164      | 213819   | Carburetor—Elbow   |          |
| 611      | 493496   | Elbow—Fuel Pipe  |          |
| 618      | 262803   | Spring—Choke Return  |          |
| ●634     | 281168   | Seal—Choke Shaft   |          |
| 955      | 94642    | Screw—Fuel Bowl  |          |
| 965      | 94010    | Nut—Hex.   |          |
| 975      | 494378   | Bowl—Float   |          |
| ●987     | 281166   | Seal—Throttle Shaft  |          |

★ Included in Gasket Set—Part No. 494241.  
◆ Included in Carburetor Gasket Set—Part No. 494385.

● Included in Carburetor Kit—Part No. 496622.



Assemblies include all parts shown in frames.

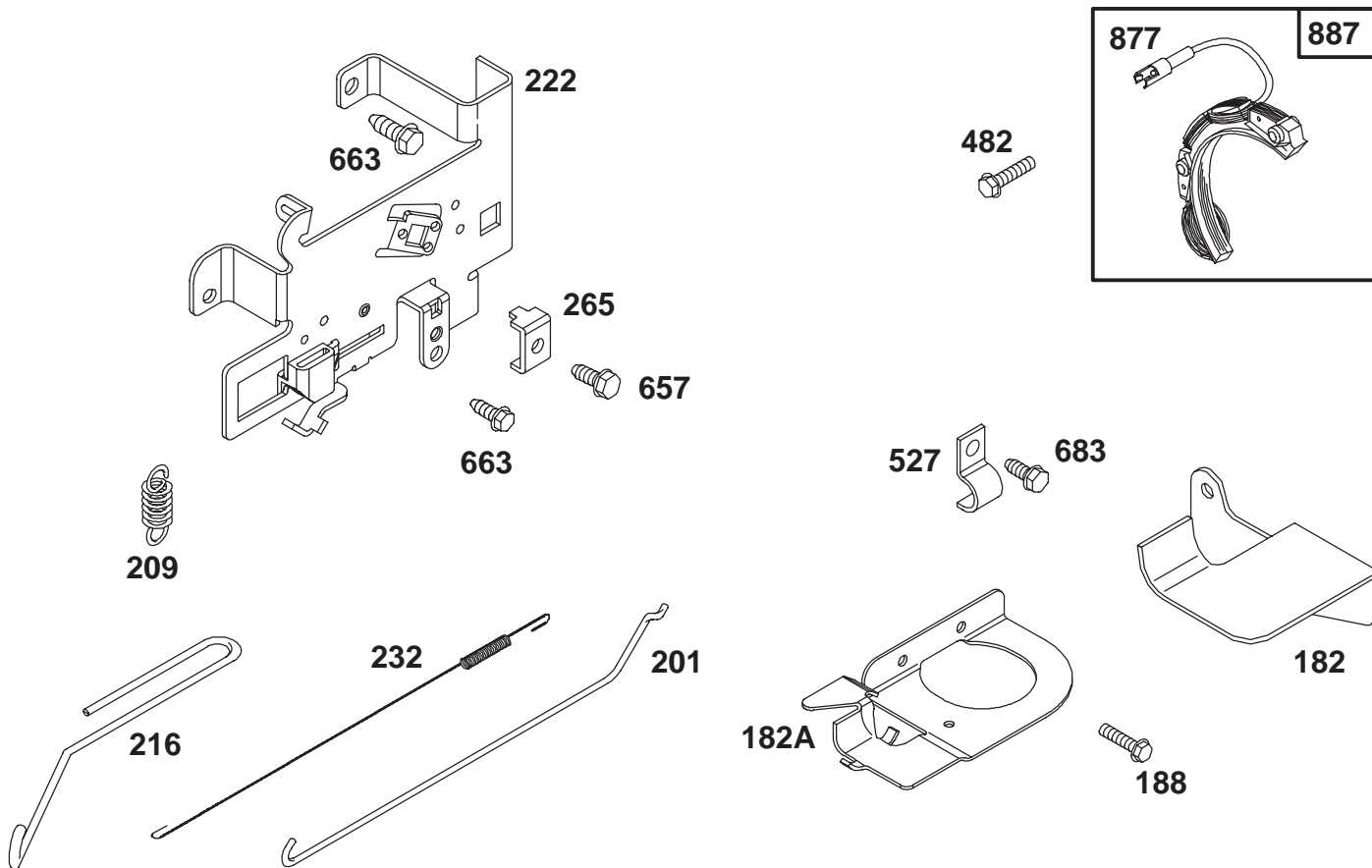
## ENGINE BRIGGS & STRATTON MODEL 28B707-0126-01

| Ref. No. | Part No. | Description           | No. Used |
|----------|----------|-----------------------|----------|
| 171      | 281051   | Nut—Air Cleaner Mtg.  |          |
| 224      | 94729    | Screw—Air Cleaner Sem |          |
| 284      | 94704    | Screw—Air Cleaner     |          |
| 300      | 491413   | Muffler—Exhaust       |          |
| 346      | 93705    | Screw—Hex. Head       |          |
| 445      | 493910   | Cartridge—Air Cleaner |          |
| 467      | 493903   | Knob—Air Cleaner      |          |
| ★537     | 281106   | Gasket—Air Cleaner    |          |
| 613      | 93927    | Screw—Hex. Hd.        |          |

| Ref. No. | Part No. | Description         | No. Used |
|----------|----------|---------------------|----------|
| 646      | 224546   | Brace—Air Cleaner   |          |
| 663      | 94620    | Screw—Hex. Hd.      |          |
| 676      | 396903   | Deflector—Muffler   |          |
| 725      | 223023   | Shield—Muffler      |          |
| 836      | 94786    | Screw—Hex. Hd.      |          |
| 872      | 281105   | Cover—Air Cleaner   |          |
| 875      | 496368   | Body—Air Cleaner    |          |
| ★883     | 272293   | Gasket—Exhaust Pipe |          |

★ Included in Gasket Set—Part No. 494241.  
 ◆ Included in Carburetor Gasket Set—Part No. 494385.

● Included in Carburetor Kit—Part No. 496622.



Assemblies include all parts shown in frames.

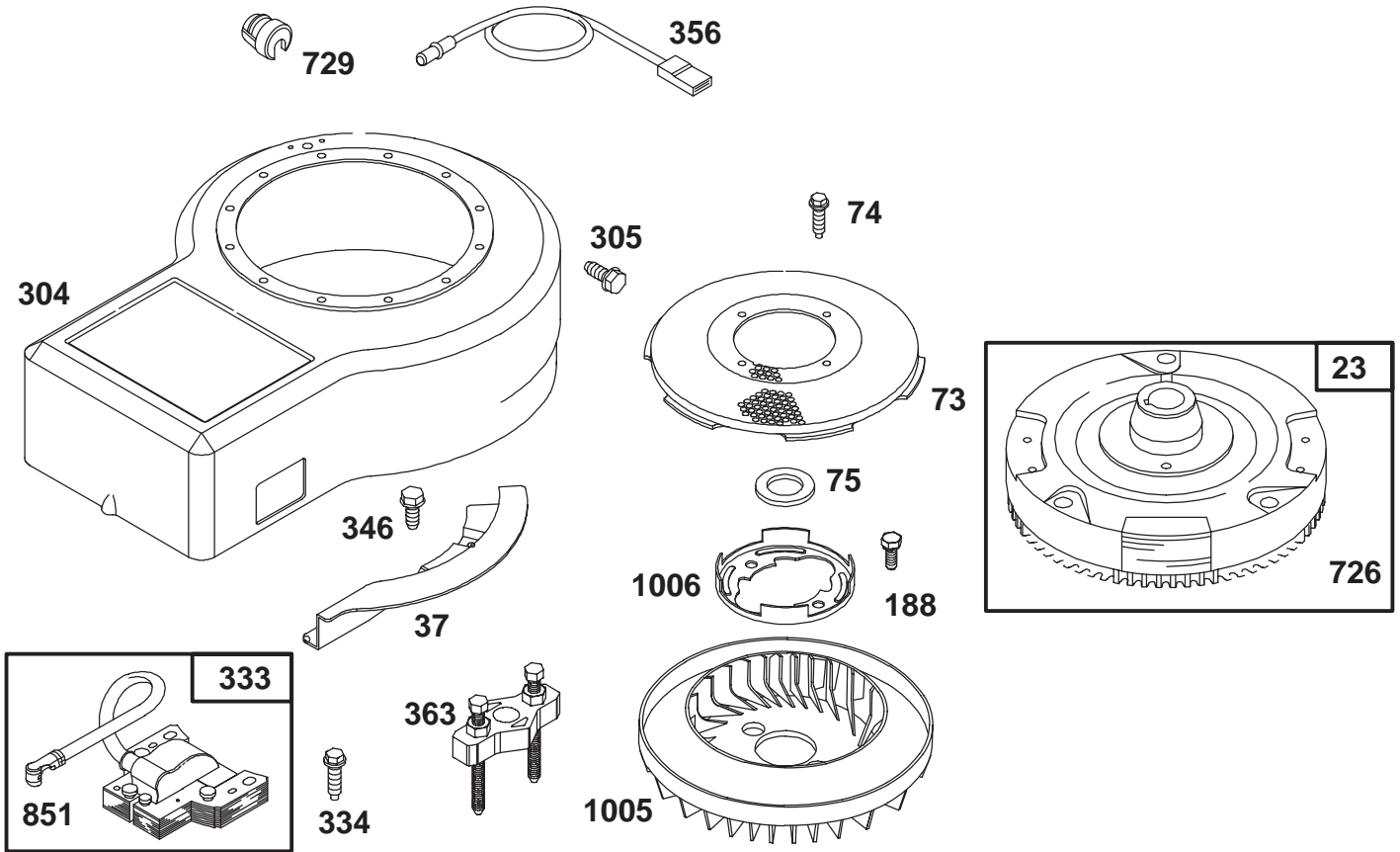
## ENGINE BRIGGS & STRATTON MODEL 28B707-0126-01

| Ref. No. | Part No. | Description              | No. Used |
|----------|----------|--------------------------|----------|
| 182      | 223925   | Bracket—Fuel Tank (R.H.) |          |
| 182A     | 223866   | Bracket—Fuel Tank (L.H.) |          |
| 188      | 94480    | Screw—Sem                |          |
| 201      | 262767   | Link—Governor            |          |
| 209      | 260871   | Spring—Governor          |          |
| 216      | 262766   | Link—Choke               |          |
| 222      | 495611   | Plate—Gov. Control       |          |
| 232      | 262785   | Spring—Governor Link     |          |

| Ref. No. | Part No. | Description    | No. Used |
|----------|----------|----------------|----------|
| 265      | 221535   | Clamp—Casing   |          |
| 482      | 93621    | Screw—Sem      |          |
| 527      | 221428   | Clamp          |          |
| 657      | 93496    | Screw—Sem      |          |
| 663      | 94620    | Screw—Hex. Hd. |          |
| 683      | 93572    | Screw—Hex. Hd. |          |
| 877      | 393814   | Diode Assy.    |          |
| 887      | 391529   | Alternator     |          |

★ Included in Gasket Set—Part No. 494241.  
 ◆ Included in Carburetor Gasket Set—Part No. 494385.

● Included in Carburetor Kit—Part No. 496622.



Assemblies include all parts shown in frames.

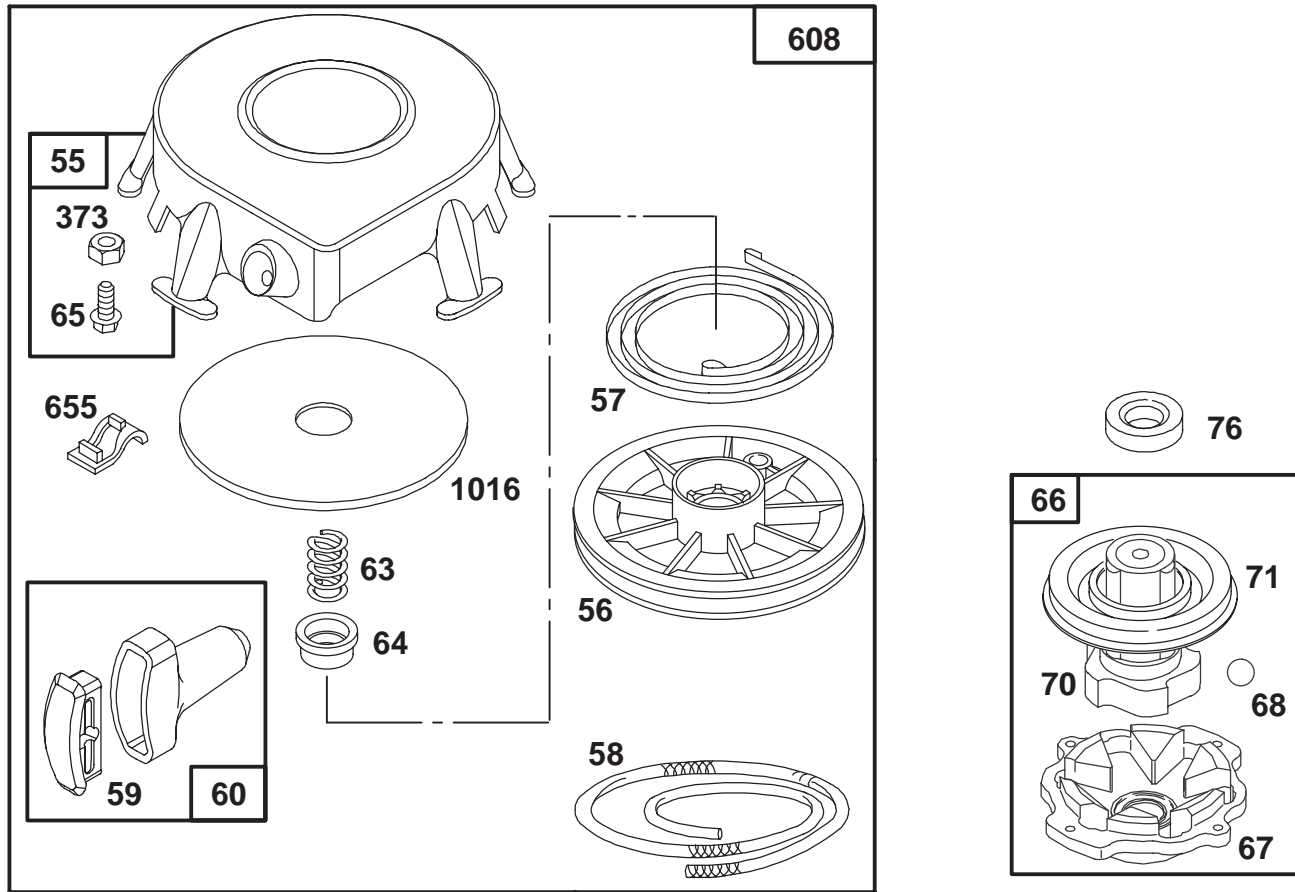
## ENGINE BRIGGS & STRATTON MODEL 28B707-0126-01

| Ref. No. | Part No. | Description      | No. Used |
|----------|----------|------------------|----------|
| 23       | 492326   | Flywheel         |          |
| 37       | 224502   | Guard—Flywheel   |          |
| 73       | 224518   | Screen—Rotating  |          |
| 74       | 93758    | Screw—Sem        |          |
| 75       | 224061   | Washer—Spring    |          |
| 188      | 94627    | Screw—Sem        |          |
| 304      | 496319   | Housing—Blower   |          |
| 333      | 492341   | Armature—Magneto |          |
| 334      | 94731    | Screw—Sem        |          |

| Ref. No. | Part No. | Description                           | No. Used |
|----------|----------|---------------------------------------|----------|
| 346      | 93705    | Screw—Hex. Head                       |          |
| 356      | 494328   | Wire—Ground                           |          |
| 363      | 19203    | Puller—Flywheel                       |          |
| 726      | 392134   | Gear—Ring<br>(Includes Mtg. Hardware) |          |
| 729      | 281159   | Clip—Lead Wire                        |          |
| 851      | 493880   | Terminal—Ignition Cable               |          |
| 1005     | 280687   | Fan—Flywheel                          |          |
| 1006     | 224413   | Retainer—Fan                          |          |

★ Included in Gasket Set—Part No. 494241.  
 ◆ Included in Carburetor Gasket Set—Part No. 494385.

● Included in Carburetor Kit—Part No. 496622.



Assemblies include all parts shown in frames.

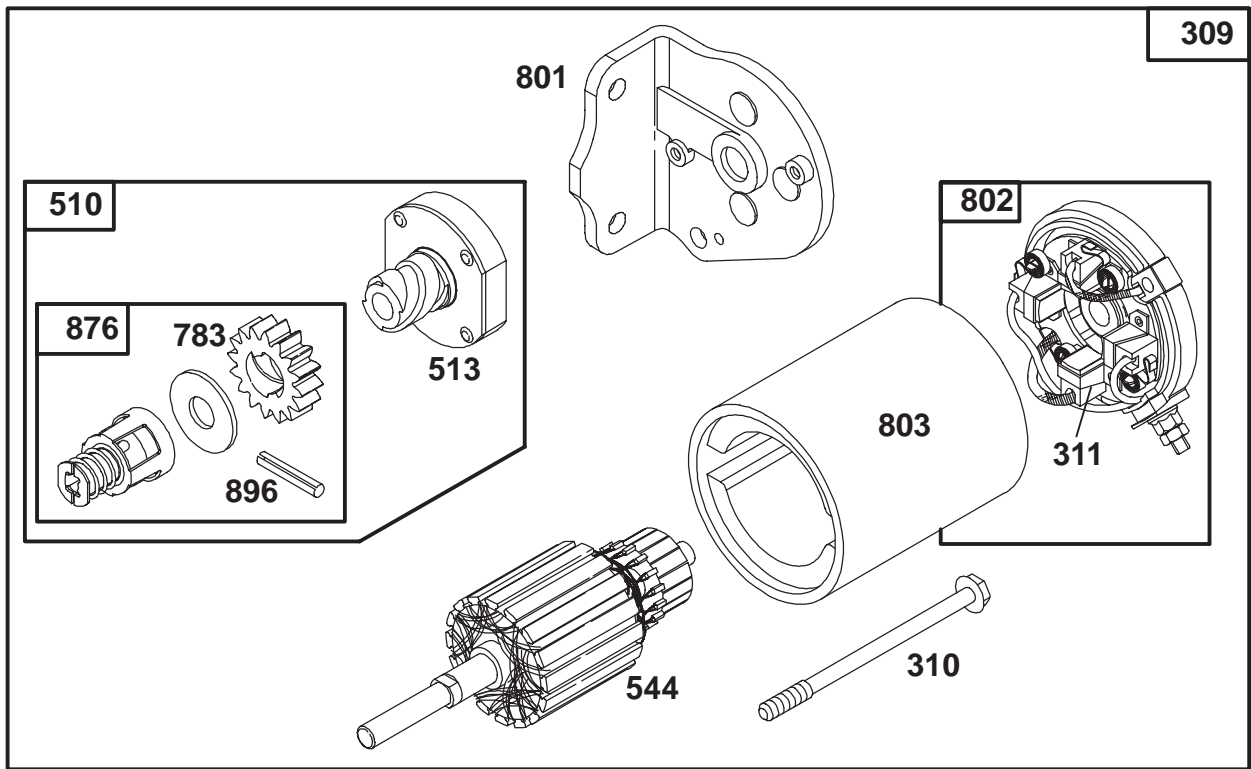
## ENGINE BRIGGS & STRATTON MODEL 28B707-0126-01

| Ref. No. | Part No. | Description                                | No. Used |
|----------|----------|--|----------|
| 55       | 393576   | Housing—Rewind Starter (Includes 63" Rope) |          |
| 56       | 295871   | Pulley—Rewind Starter                      |          |
| 57       | 490179   | Spring—Rewind Starter                      |          |
| 58       | 66884    | Rope—Starter                               |          |
| 59       | 490653   | Insert—Starter Handle                      |          |
| 60       | 490652   | Handle—Rewind Starter                      |          |
| 63       | 260414   | Spring—Ratchet                             |          |
| 64       | 230543   | Adapter— Spring                            |          |
| 65       | 94128    | Screw—Sem                                  |          |

| Ref. No. | Part No. | Description          | No. Used |
|----------|----------|----------------------|----------|
| 66       | 495970   | Clutch—Starter       |          |
| 67       | 394897   | Housing—Clutch       |          |
| 68       | 63770    | Ball—Clutch          |          |
| 70       | 298799   | Ratchet—Clutch       |          |
| 71       | 394506   | Washer—Retainer      |          |
| 76       | 68238    | Washer—Sealing       |          |
| 373      | 92987    | Nut—Hex.             |          |
| 608      | 390391   | Starter Assy.—Rewind |          |
| 655      | 222598   | Anchor—Spring        |          |
| 1016     | 490817   | Spacer               |          |

★ Included in Gasket Set—Part No. 494241.  
 ◆ Included in Carburetor Gasket Set—Part No. 494385.

● Included in Carburetor Kit—Part No. 496622.



Assemblies include all parts shown in frames.

## ENGINE BRIGGS & STRATTON MODEL 28B707-0126-01

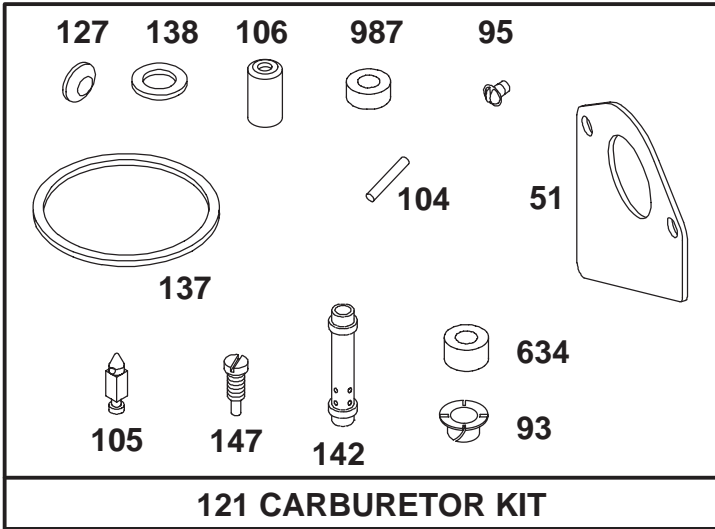
| Ref. No. | Part No. | Description       | No. Used |
|----------|----------|-------------------|----------|
| 309      | 394805   | Motor-Starter     |          |
| 310      | 94003    | Bolt-Thru         |          |
| 311      | 395538   | Brush Set-Starter |          |
| 510      | 495878   | Drive-Starter     |          |
| 513      | 398003   | Clutch Assembly   |          |
| 544      | 390837   | Armature-Starter  |          |

| Ref. No. | Part No. | Description     | No. Used |
|----------|----------|-----------------|----------|
| 783      | 280104   | Gear            |          |
| 801      | 394856   | Cap-Drive       |          |
| 802      | 395537   | Cap-End         |          |
| 803      | 398159   | Housing-Starter |          |
| 876      | 495877   | Kit-Spring      |          |
| 896      | 94288    | Pin-Roll        |          |

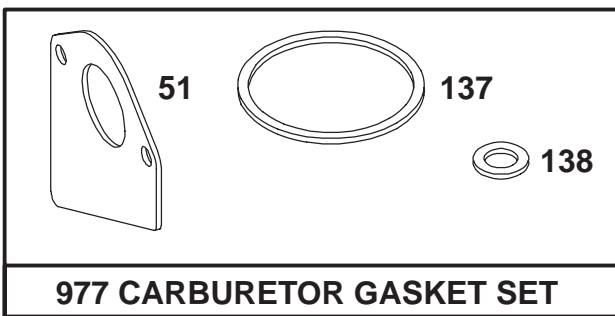
★ Included in Gasket Set-Part No. 494241.

◆ Included in Carburetor Gasket Set-Part No. 494385.

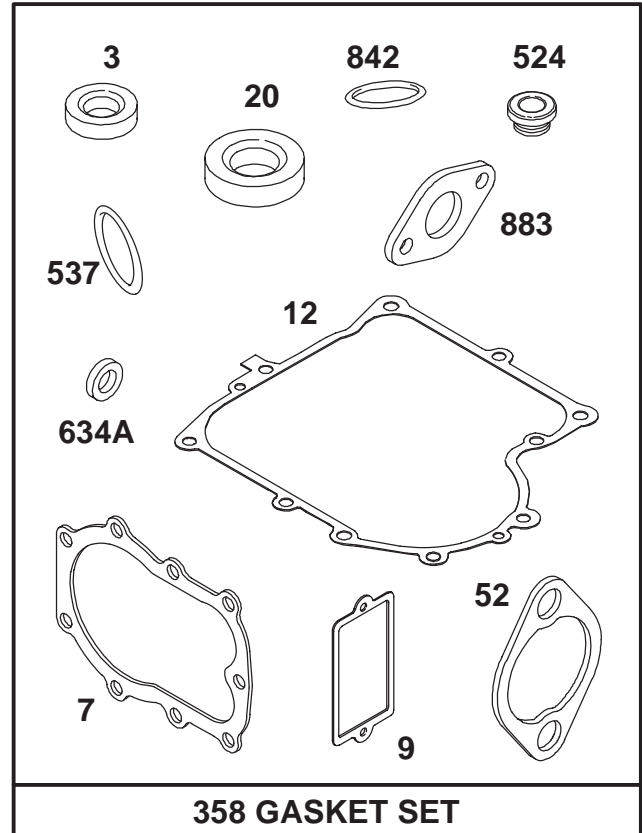
● Included in Carburetor Kit-Part No. 496622.



**121 CARBURETOR KIT**



**977 CARBURETOR GASKET SET**



**358 GASKET SET**

Assemblies include all parts shown in frames.

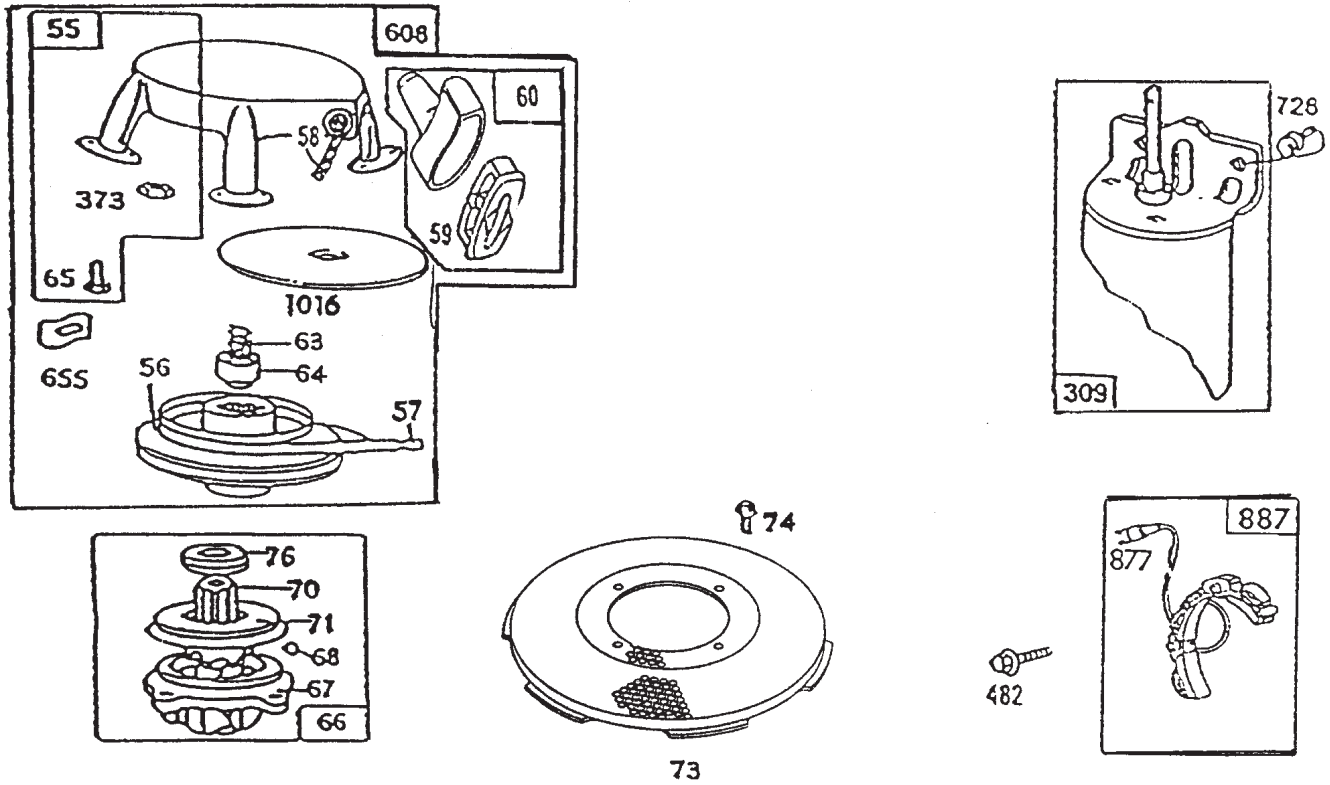
## ENGINE BRIGGS & STRATTON MODEL 28B707-0126-01

| Ref. No. | Part No. | Description                       | No. Used |
|----------|----------|-----------------------------------|----------|
| ★3       | 391086   | Seal—Oil                          |          |
| ★7       | 271866   | Gasket—Cylinder Head              |          |
| ★9       | 27803    | Gasket—Valve Cover                |          |
| ★12      | 271916   | Gasket—Crankcase<br>(.015" Thick) |          |
| ★        | 271997   | Gasket—Crankcase<br>(.005" Thick) |          |
| ★        | 271996   | Gasket—Crankcase<br>(.009" Thick) |          |
| ★20      | 291675   | Seal—Oil                          |          |
| ◆51      | 272465   | Gasket—Carburetor                 |          |
| ★52      | 272554   | Gasket—Carburetor                 |          |
| ●93      | 281346   | Bushing—Throttle Shaft            |          |
| ●95      | 94098    | Screw—Throttle                    |          |
| ●104     | 231789   | Pin—Float Hinge                   |          |
| ●105     | 231855   | Valve—Inlet Needle                |          |
| ●106     | 231854   | Inlet Valve Seat                  |          |
| 121      | 496622   | Carburetor Kit                    |          |

| Ref. No. | Part No. | Description  | No. Used |
|----------|----------|--|----------|
| ●127     |          | Plug—Welch<br>(Sold in Kit Only).  |          |
| ◆137     | 281165   | Gasket—Float Bowl  |          |
| ◆138     | 281164   | Washer—Float Bowl  |          |
| ●142     | 496519   | Nozzle—Carburetor<br><b>Note:</b> 496623 Nozzle—Carb.<br>(High Altitude)<br><b>Includes:</b><br>281164 Washer—Float Bowl |          |
| ●147     | 231794   | Pilot—Jet  |          |
| 358      | 494241   | Gasket Set   |          |
| ★524     | 281370   | Seal—Filler Tube   |          |
| ★537     | 281106   | Gasket—Air Cleaner   |          |
| ●634     | 281168   | Seal—Choke Shaft   |          |
| ★634A    | 491323   | Seal—Governor  |          |
| ★842     | 270920   | Seal—Oil Filler Cap  |          |
| ★883     | 272293   | Gasket—Muffler   |          |
| 977      | 494385   | Carburetor Gasket Set  |          |
| ●987     | 281166   | Seal—Throttle  |          |

★ Included in Gasket Set—Part No. 494241.  
◆ Included in Carburetor Gasket Set—Part No. 494385.

● Included in Carburetor Kit—Part No. 496622.



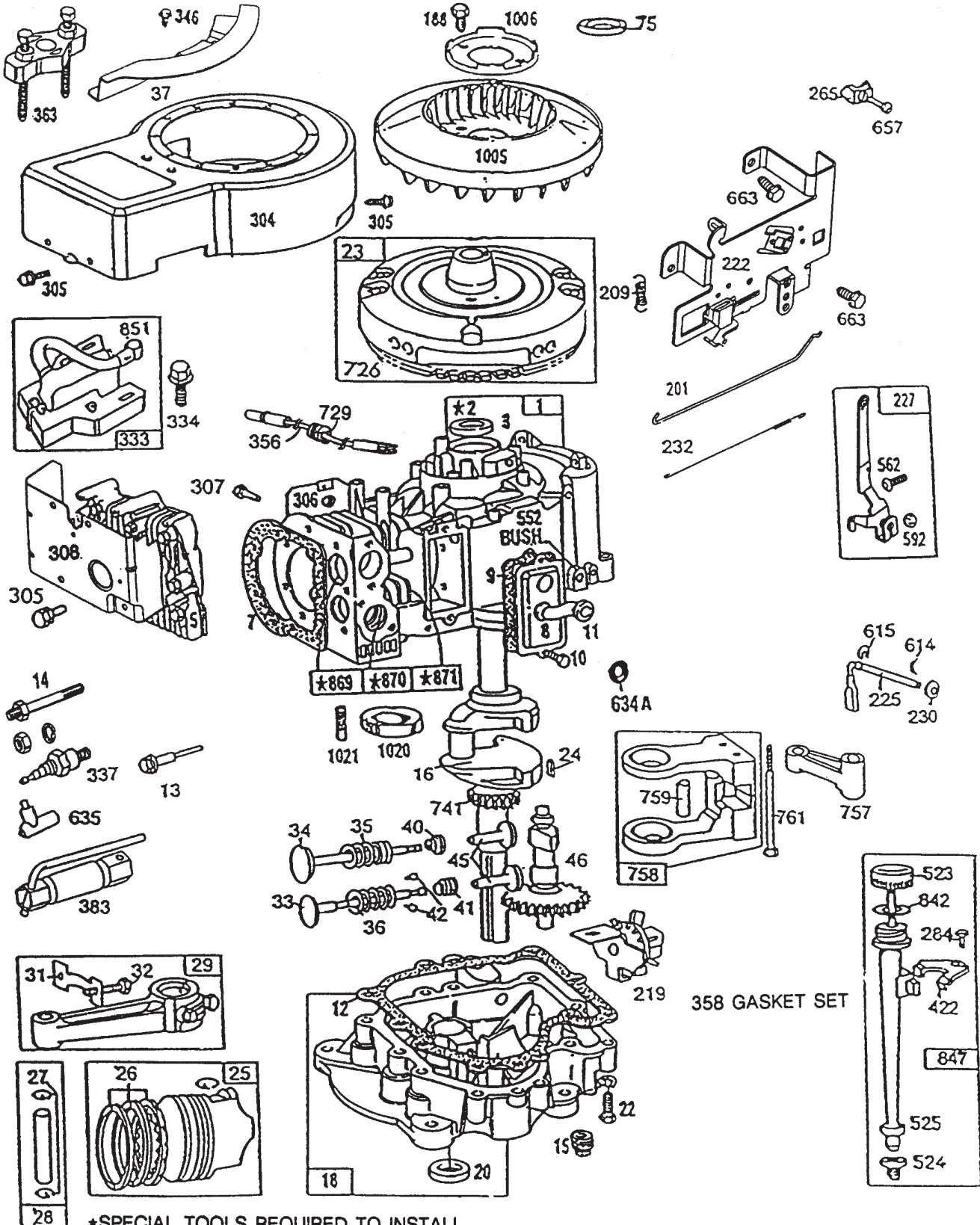
Assemblies include all parts shown in frames.

C-0787

## REWIND – BRIGGS & STRATTON NO. 286707-0119-01

| Ref. No. | Part No. | Description                                     | No. Used | Ref. No. | Part No. | Description  | No. Used |
|----------|----------|---|----------|----------|----------|--|----------|
| 55       | 393576   | Housing – Rewind Starter<br>(Includes 63" Rope) | 1        | 73       | 223859   | Screen – Rotating  | 1        |
| 56       | 295871   | Pulley – Rewind Starter                         | 1        | 74       | 93042    | Screw – Sem  | 1        |
| 57       | 490179   | Spring – Rewind Starter                         | 1        | 76       | 68238    | Washer – Ratchet, Sealing  | 1        |
| 58       | 66884    | Rope – Rewind Starter<br>(63" Long)             | 1        | 309      |          | Motor – Starting (12 Volt)<br>See Illustrated Pages for<br>Replacement Parts for<br>Starter Motor. | 1        |
| 59       | 490653   | Insert – Starter Handle                         | 1        | 373      | 92987    | Nut – Hex.   | 1        |
| 60       | 490652   | Handle – Rewind Starter                         | 1        | 482      | 93621    | Screw – Sem  | 1        |
| 63       | 260414   | Spring – Ratchet                                | 1        | 608      | 390391   | Starter Assembly – Rewind  | 1        |
| 64       | 230543   | Adapter – Ratchet Spring                        | 1        | 655      | 222598   | Anchor – Spring  | 1        |
| 65       | 94128    | Screw – Hex. Hd. Sem                            | 1        | 728      | 94627    | Screw – Sem  | 1        |
| 66       | 399671   | Clutch Assembly – Rewind<br>Starter             | 1        | 877      | 393814   | Diode and Connector Assy.<br>Alternator (D.C.)   | 1        |
| 67       | 394897   | Housing – Starter Clutch                        | 1        | 887      | 391529   | Stator Assembly<br>Alternator (D.C.)   | 1        |
| 68       | 63770    | Ball – Clutch                                   | 1        | 1016     | 490817   | Spacer   | 1        |
| 70       | 298799   | Ratchet – Rewind Starter<br>Clutch              | 1        |          |          |  |          |
| 71       | 221653   | Washer – Retainer                               | 1        |          |          |  |          |

# BRIGGS & STRATTON MODEL NO. 286707-0119-01



\*SPECIAL TOOLS REQUIRED TO INSTALL.

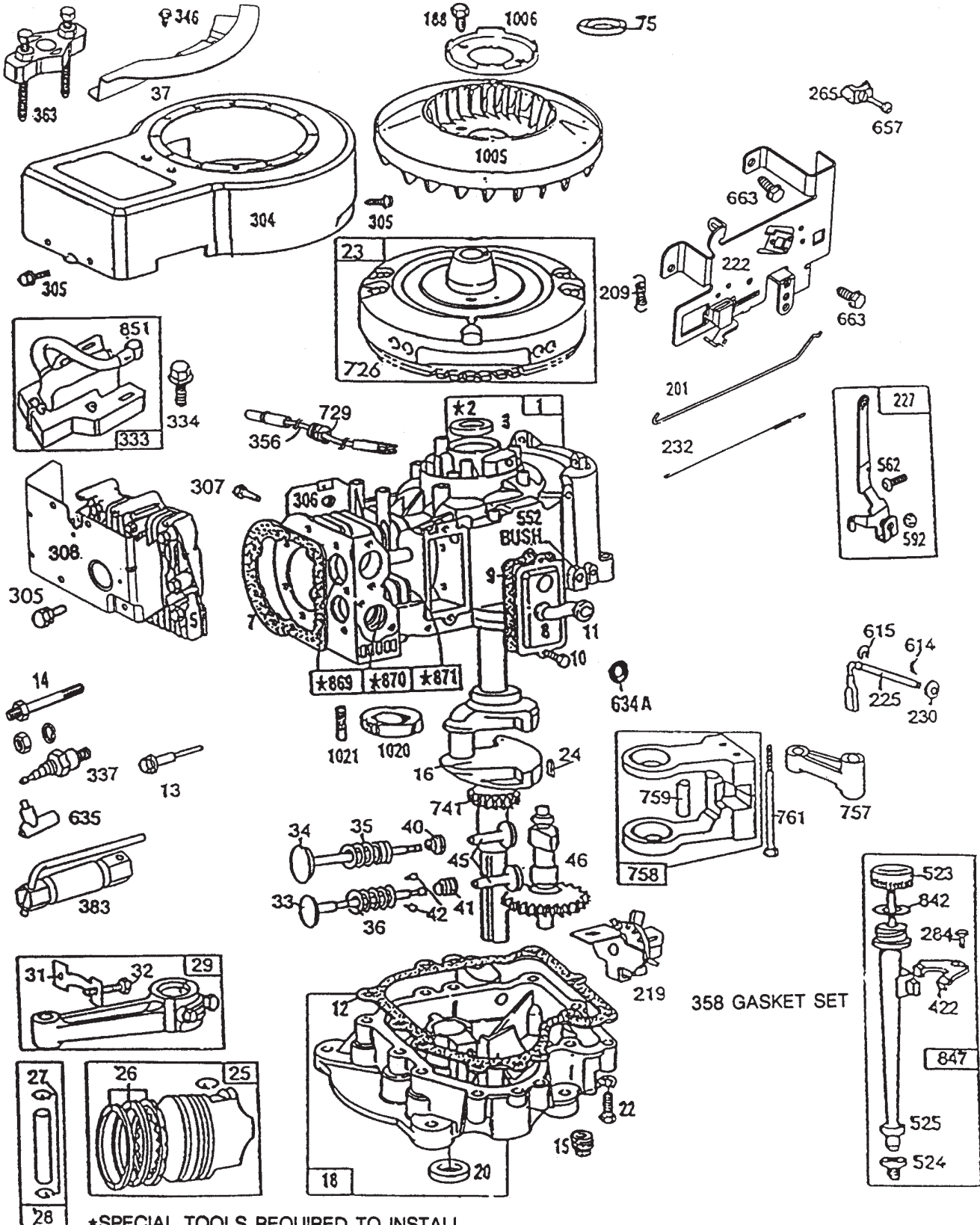
SEE REPAIR INSTRUCTION MANUAL.

Assemblies include all parts shown in frames.

# BRIGGS & STRATTON MODEL NO. 286707-0119-01

| Ref. No. | Part No. | Description   | No. Used | Ref. No. | Part No. | Description  | No. Used |
|----------|----------|---|----------|----------|----------|--|----------|
| 1        | 490450   | Cylinder Assembly   | 1        | 31       | 222299   | Lock – Conn. Rod Screw                             | 1        |
| 2        | 399265   | Bearing – Cylinder<br>Note: Requires Special<br>Tools for Installation.   | 1        | 32       | 92909    | Screw – Connecting Rod                             | 1        |
| 3        | 391086   | Seal – Oil  | 1        | 33       | 262246   | Valve – Exhaust                                    | 1        |
| 5        | 494240   | Head – Cylinder   | 1        | 34       | 262247   | Valve – Intake                                     | 1        |
| 7        | 271866   | Gasket – Cylinder Head  | 1        | 35       | 65906    | Spring – Intake Valve                              | 1        |
| 8        | 391406   | Breather Assembly   | 1        | 36       | 26828    | Spring – Exhaust Valve                             | 1        |
| 9        | 27803    | Gasket – Valve Cover  | 1        | 37       | 223752   | Guard – Flywheel                                   | 1        |
| 10       | 94621    | Screw – Sem   | 1        | 40       | 221596   | Retainer – Intake Valve                            | 1        |
| 11       | 280100   | Tube – Breather   | 1        | 41       | 292260   | Rotocoil – Exhaust Valve                           | 1        |
| 12       | 271916   | Gasket – Crankcase Cover<br>(1/64" Thick)   | 1        | 42       | 93630    | Retainer – Exhaust Valve<br>Rotocoil               | 1        |
| *        | 271997   | Gasket – Crankcase Cover<br>(.005" Thick)   | 1        | 45       | 262248   | Tappet – Valve                                     | 1        |
| *        | 271996   | Gasket – Crankcase Cover<br>(.009" Thick)   | 1        | 46       | 212897   | Gear – Cam   | 1        |
| 13       | 94622    | Screw – Cylinder Head<br>(3" Long)  | 1        | 75       | 224061   | Washer – Spring                                    | 1        |
| 14       | 93781    | Stud – Cylinder Head<br>Uses: 90366 Lockwasher,<br>93203 Nut<br>231109 Spacer                                   | 1        | 188      | 93535    | Screw – Sem Fan Mount.<br>(3/4" Long)              | 1        |
| 15       | 94239    | Plug – Oil Drain  | 1        | 201      | 262767   | Link – Governor                                    | 1        |
| 16       | 490466   | Crankshaft<br>Note: Order Part Number<br>94196 For Timing Gear Key  | 1        | 209      | 260871   | Spring – Governor                                  | 1        |
| 18       | 494238   | Base – Engine   | 1        | 219      | 490815   | Oil Slinger, Governor Gear,<br>& Bracket Assembly  | 1        |
| 20       | 291675   | Seal – Oil  | 1        | 222      | 493896   | Plate – Governor Control                           | 1        |
| 22       | 94624    | Screw – Base Mtg. Sem   | 1        | 225      | 231058   | Crank – Governor<br>(1/4" Dia.)                    | 1        |
| 23       | 492326   | Flywheel & Ring Gear Assy.<br>Magneto   | 1        | 227      | 493935   | Lever Assembly – Governor                          | 1        |
| 24       | 222698   | Key – Flywheel  | 1        | 230      | 222450   | Washer – Governor Crank<br>(1/4" Inside Diameter)  | 1        |
| 25       | 394661   | Piston Assy. – Standard   | 1        | 232      | 262785   | Spring – Governor Link                             | 1        |
|          | 394662   | Piston Assy. – .010" O.S.   | 1        | 265      | 221535   | Clamp – Casing                                     | 1        |
|          | 394663   | Piston Assy. – .020" O.S.   | 1        | 284      | 94419    | Screw – Clamp Mounting                             | 1        |
|          | 394664   | Piston Assy. – .030" O.S.   | 1        | 304      | 494269   | Housing Blower (Red)                               | 1        |
|          |          | <b>PISTON RING SETS</b><br>Note: For Chrome Ring Set<br>Standard Size, Order No.<br>392331                      |          | 305      | 94619    | Screw – Blower Housing<br>Mounting, Sem            | 1        |
| 26       | 391780   | Ring Set – Piston Std.  | 1        | 306      | 224545   | Shield – Cylinder                                  | 1        |
|          | 391781   | Ring Set – Piston .010" O.S.  | 1        | 307      | 94623    | Screw – Cylinder Shield<br>Mounting, Sem           | 1        |
|          | 391782   | Ring Set – Piston .020" O.S.  | 1        | 308      | 491490   | Cover – Cylinder Head                              | 1        |
|          | 391783   | Ring Set – Piston .030" O.S.  | 1        | 333      | 492341   | Armature – Magneto                                 | 1        |
| 27       | 260924   | Lock – Piston Pin   | 1        | 334      | 93381    | Screw – Armature Mtg.<br>Sem                       | 1        |
| 28       | 299691   | Pin Assy. – Piston Std.   | 1        | 337      | 802592   | Plug – Spark                                       | 1        |
|          | 391286   | Pin Assy. – Piston .005" O.S.   | 1        | 346      | 93705    | Screw – Hex. Hd.                                   | 1        |
| 29       | 490348   | Rod Assembly – Conn.<br>Note: For Connecting Rod<br>with .020" Undersize<br>Crankpin Bore, Order No.<br>490469. | 1        | 356      | 494328   | Wire Assembly                                      | 1        |
|          |          |   |          | 358      | 494241   | Gasket Set   | 1        |
|          |          |   |          | 363      | 19203    | Puller – Flywheel                                  | 1        |
|          |          |   |          | 383      | 89838    | Wrench – Spark Plug                                | 1        |
|          |          |   |          | 422      | 224390   | Clamp – Oil Filler Tube                            | 1        |
|          |          |   |          | 523      | 490327   | Cap & Dipstick – Oil Filler                        | 1        |
|          |          |   |          | 524      | 68838    | Seal – Filler Tube                                 | 1        |
|          |          |   |          | 525      | 280741   | Tube – Oil Filler                                  | 1        |
|          |          |   |          | 552      | 231597   | Bushing – Governor Crank<br>(1/4" Inside Diameter) | 1        |
|          |          |   |          | 562      | 92613    | Bolt – Governor Lever                              | 1        |

# BRIGGS & STRATTON MODEL NO. 286707-0119-01



\*SPECIAL TOOLS REQUIRED TO INSTALL.

SEE REPAIR INSTRUCTION MANUAL.

Assemblies include all parts shown in frames.

**BRIGGS & STRATTON MODEL NO. 286707-0119-01**

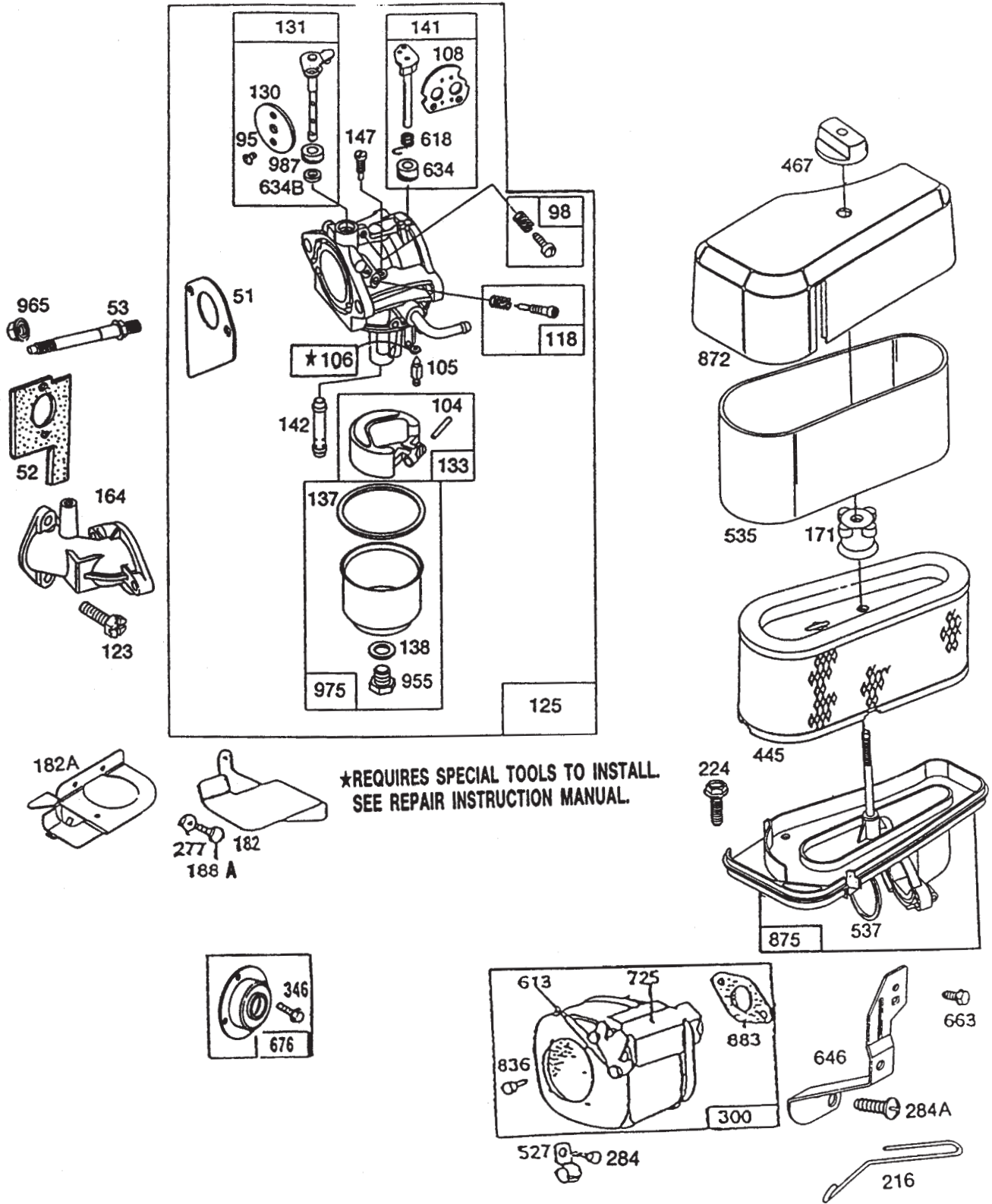
| Ref. No. | Part No. | Description                           | No. Used |
|----------|----------|---------------------------------------|----------|
| 592      | 231082   | Nut – Hex. (10–24)                    | 1        |
| 614      | 93306    | Cotter – Hair Pin                     | 1        |
| 615      | 93307    | Retainer – Ring                       | 1        |
| 634A     | 491323   | Seal – Governor                       | 1        |
| 635      | 66538    | Elbow – Spark Plug                    | 1        |
| 657      | 93496    | Screw – Sem                           | 1        |
| 663      | 94620    | Screw – Hex. Hd.                      | 1        |
| 726      | 392134   | Gear – Ring<br>(Incl. Mounting Parts) | 1        |
| 729      | 281159   | Clip – Lead Wire                      | 1        |
| 741      | 262135   | Gear – Timing                         | 1        |
| 757      | 212359   | Link – Counterweight                  | 1        |
| 758      | 399891   | Counterweight Assembly                | 1        |
| 759      | 298909   | Pin – Counterweight                   | 1        |
| 761      | 93875    | Screw – Counterweight                 | 1        |
| 842      | 270920   | Seal – Oil Filler Cap                 | 1        |

| Ref. No. | Part No. | Description  | No. Used |
|----------|----------|--|----------|
| 847      | 490474   | Fill Group – Oil   | 1        |
| 8 51     | 221798   | Terminal – Ignition Cable  | 1        |
| 869      | 261463   | Seat – Intake Valve (Std.)   | 1        |
| 870      | 213316   | Seat – Exhaust Valve (Std.)  | 1        |
| 871      | 261961   | Guide – Exhaust Valve<br>Note: 231218 Guide –<br>Intake Valve (Brass)<br>See Repair Manual | 1        |
| 1005     | 280687   | Fan – Flywheel   | 1        |
| 1006     | 223726   | Retainer – Fan   | 1        |
| 1020     | 262243   | Eccentric  | 1        |
| 1021     | 94160    | Pln – Eccentric  | 1        |
| *        | 494241   | Kit – Gasket Set<br>(Incl. Ref. #3, 7, 9, 12,<br>20, & 634A)                               | 1        |

\*Not Illustrated

# BRIGGS & STRATTON MODEL NO. 286707-0119-01

## 121 CARBURETOR OVERHAUL KIT

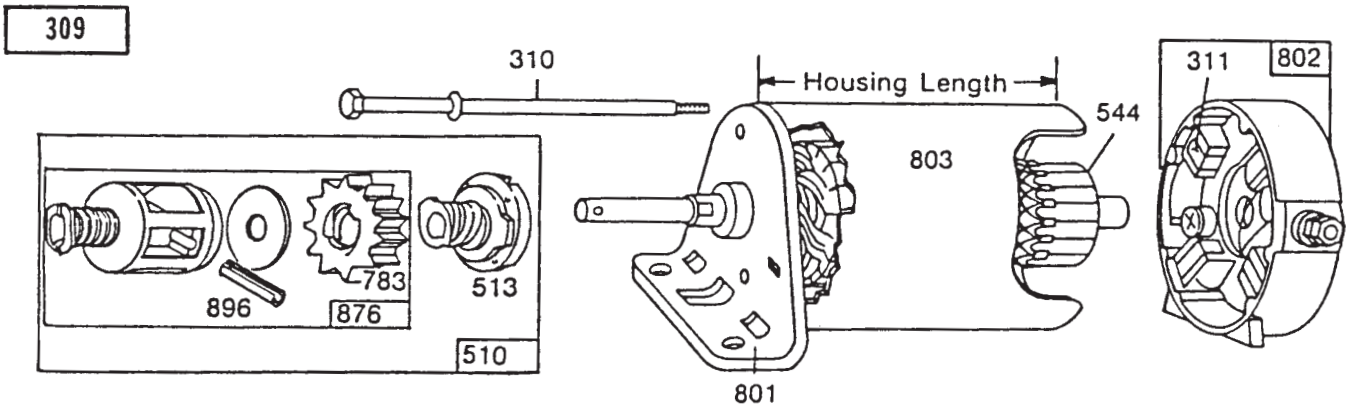


Assemblies include all parts shown in frames.

# BRIGGS & STRATTON MODEL NO. 286707-0119-01

| Ref. No. | Part No. | Description  | No. Used | Ref. No. | Part No. | Description  | No. Used |
|----------|----------|--|----------|----------|----------|--|----------|
| 51       | 272465   | Gasket – Carburetor (Carburetor to Elbow)  | 1        | 224      | 94513    | Screw – Air Cleaner, Sem   | 1        |
| 52       | 270872   | Gasket – Carburetor (Elbow to Cylinder)  | 1        | 277      | 22776    | Washer – Flat  | 1        |
| 53       | 94637    | Stud – Carburetor, Mount.  | 1        | 284      | 94419    | Screw – Clamp Mounting   | 1        |
| 95       | 94098    | Screw – Throttle   | 1        | 284A     | 94326    | Screw – Air Cleaner  | 1        |
| 98       | 494382   | Screw – Idle Speed   | 1        | 300      | 491413   | Muffler – Exhaust  | 1        |
| 104      | 231789   | Pin – Float Hinge  | 1        | 346      | 93705    | Screw – Hex. Head  | 1        |
| 105      | 231790   | Valve Assembly<br>Inlet Needle   | 1        | 445      | 493909   | Cartridge – Air Cleaner  | 1        |
| 106      | 281169   | Inlet Valve Seat   | 1        | 467      | 493903   | Knob – Air Cleaner   | 1        |
| 108      | 224540   | Valve – Choke  | 1        | 527      | 221428   | Clamp  | 1        |
| 118      | 494383   | Valve – Needle   | 1        | 535      | 272403   | Element – Air Cleaner  | 1        |
| 121      | 494384   | Kit – Carburetor Overhaul  | 1        | 537      | 281106   | O-Ring – Air Cleaner   | 1        |
| 123      | 94616    | Screw – Elbow Mounting   | 1        | 613      | 93927    | Screw – Hex. Head  | 1        |
| 125      | 494502   | Carburetor Assembly  | 1        | 618      | 262803   | Spring – Choke Return  | 1        |
| 130      | 224539   | Valve – Throttle   | 1        | 634      | 281168   | Seal – Choke Shaft   | 1        |
| 131      | 494379   | Shaft & Lever, Throttle  | 1        | 634B     | 281167   | Washer – Throttle Shaft  | 1        |
| 133      | 494381   | Float – Carburetor   | 1        | 646      | 224546   | Brace – Air Cleaner  | 1        |
| 137      | 281165   | Gasket – Float Bowl  | 1        | 663      | 94620    | Screw – Hex. Head  | 1        |
| 138      | 281164   | Washer – Float Bowl Screw  | 1        | 676      | 396903   | Deflector – Muffler  | 1        |
| 141      | 494380   | Shaft & Lever – Choke  | 1        | 725      | 223023   | Shield – Muffler   | 1        |
| 142      | 494537   | Nozzle Jet – Carburetor<br>Note: 494499 High Altitude<br>Kit Includes: 231796 Pilot<br>Jet (High Altitude)<br>281164 Seat-Bowl Screw<br>494386 Nozzle High<br>Altitude | 1        | 836      | 94513    | Screw – Hex. Head  | 1        |
| 147      | 231794   | Pilot – Jet  | 1        | 872      | 281104   | Cover – Air Cleaner  | 1        |
| 164      | 213819   | Carburetor j- Elbow  | 1        | 875      | 494237   | Body – Air Cleaner   | 1        |
| 171      | 281051   | Nut – Air Cleaner Mounting   | 1        | 883      | 270917   | Gasket – Exhaust Pipe  | 1        |
| 182      | 223925   | Bracket – Fuel Tank (R.H.)   | 1        | 955      | 94642    | Screw – Fuel Bowl  | 1        |
| 182A     | 223866   | Bracket – Fuel Tank (L.H.)   | 1        | 965      | 94108    | Locknut – Air Cleaner, Mtg.  | 1        |
| 188A     | 93634    | Screw – Sem<br>(7/8" Long)   | 1        | 975      | 494378   | Bowl Ass'y – Carburetor  | 1        |
| 216      | 262766   | Link – Choke   | 1        | 977      | 494385   | Kit – Gasket, Carburetor   | 1        |
|          |          |  |          | 987      | 281166   | Seal – Throttle Shaft  | 1        |
|          |          |  |          | *        | 494384   | Kit – Overhaul, Carburetor<br>(Incl. Ref. #51, 95, 104,<br>105, 106, 137, 138, 142,<br>147, 634, 634B & 987) | 1        |
|          |          |  |          | *        | 494385   | Gasket Set – Carburetor<br>(Incl. Ref. #51, 137 & 138)   | 1        |
|          |          |  |          | *        | 494241   | Gasket Set<br>(Incl. Ref. #537 & 883)  | 1        |

\*Not Illustrated



**NOTE:**  
To identify Briggs & Stratton manufactured starter motors, measure the housing length.

C-0784

## STARTER – BRIGGS & STRATTON

| Ref. No. | Part No. | Description   | No. Used |
|----------|----------|---|----------|
| 309      | 394805   | Motor & Drive Assembly                              | 1        |
| 309      | 494198   | Motor & Drive Assembly<br>(Model 286707-0119-01)    | 1        |
| 310      | 94003    | Thru Bolt Assembly                                  | 1        |
| 310      | 94004    | Thru Bolt Assembly<br>(Model 286707-0119-01)        | 1        |
| 311      | 395538   | Brush Assembly                                      | 1        |
| 510      | 490421   | Drive Assembly<br>(Incl. Ref. #513, 783, 876 & 896) | 1        |
| 513      | 398003   | Clutch Assembly                                     | 1        |
| 544      | 390837   | Armature Assembly                                   | 1        |
| 544      | 391160   | Armature Assembly<br>(Model 286707-0119-01)         | 1        |

| Ref. No. | Part No. | Description   | No. Used |
|----------|----------|---|----------|
| 783      | 280104   | Gear  | 1        |
| 801      | 394856   | Drive End Cap Assembly<br>(Incl. Brush Set)                 | 1        |
| 802      | 395537   | End Cap Assembly<br>Commutator                              | 1        |
| 803      | 398159   | Housing Assembly<br>(3-21/32" Long)                         | 1        |
| 803      | 494205   | Housing Assembly<br>(4-3/8" Long)<br>(Model 286707-0119-01) | 1        |
| 876      | 490467   | Retainer & Pin  | 1        |
| 896      | 94288    | Roll Pin  | 1        |

# TORO PART NUMBER INDEX

3318-163

| Part No. | Description                | Pg. No. | Ref. No. | Qty. | Part No. | Description                 | Pg. No. | Ref. No. | Qty. |
|----------|----------------------------|---------|----------|------|----------|-----------------------------|---------|----------|------|
| 110513   | Bearing                    | 2       | 2        | 4    | 56-7130  | Tower - Front               | 1       | 4        | 1    |
| 147665   | Screw - Phillips Hd.       | 6       | 1        | 2    | 56-7140  | Tower - Rear                | 1       | 8        | 1    |
| 147665   | Screw - Phillips Head      | 4       | 1        | 2    | 56-7170  | Guide - Shaft, Steering     | 1       | 6        | 1    |
| 3-6498   | Washer - Thrust            | 2       | 5        | 5    | 56-7180  | Cover - Front               | 2       | 30       | 1    |
| 7-0036   | Key - Square               | 11      | 24       | 2    | 56-7240  | Bracket - Retaining, Spring | 3       | 3        | 1    |
| 12-5820  | Pulley - Idler             | 9       | 35       | 1    | 56-7400  | Arm - Lever, H.O.C.         | 5       | 24       | 1    |
| 12-8819  | Loose Parts                | 1       | *        | 1    | 56-7430  | Pin - Support               | 12      | 22       | 2    |
| 12-8829  | Loose Parts                | 1       | *        | 1    | 56-7470  | Bracket - Rack, Steering    | 2       | 33       | 1    |
| 12-9020  | Retainer - Belt            | 9       | 34       | 1    | 56-7500  | Shaft - Steering            | 2       | 31       | 1    |
| 14-9999  | Deck - Cutting, Recycler   | 13      | 49       | 1    | 56-7520  | Bushing - Sector            | 2       | 22       | 1    |
| 19-1470  | Bolt - Shoulder            | 5       | 20       | 1    | 56-7530  | Bolt - Shoulder             | 2       | 20       | 1    |
| 23-0660  | Switch - Ignition          | 4       | 10       | 1    | 56-7570  | Rod - Engagement            | 3       | 15       | 1    |
| 26-0671  | Bolt - Blade               | 13      | 39       | 1    | 56-7650  | Tube - Pivot                | 3       | 14       | 1    |
| 27-9080  | Bearing - Flange           | 2       | 15       | 4    | 56-7670  | Cable - Battery, Positive   | 9       | 21       | 1    |
| 28-0380  | Spacer - Axle, Front       | 2       | 24       | 1    | 56-7670  | Cable - Positive            | 6       | 17       | 1    |
| 28-0540  | Bolt - Shoulder            | 5       | 8        | 1    | 56-7710  | Hold Down - Battery         | 8       | 26       | 1    |
| 28-2480  | Washer                     | 11      | 15       | 4    | 56-7720  | Post - Battery              | 8       | 21       | 1    |
| 28-2480  | Washer                     | 2       | 43       | 2    | 56-7810  | Decal - Brake, Parking      | 1       | 9        | 1    |
| 28-7350  | Post - Pivot               | 13      | 16       | 1    | 57-4060  | Retainer - Front            | 9       | 16       | 1    |
| 28-7890  | Module - Interlock         | 6       | 11       | 1    | 57-4070  | Retainer - Rear             | 9       | 20       | 1    |
| 28-8010  | Spring - Torsion           | 13      | 10       | 1    | 57-9940  | Spring - Brake              | 11      | 17       | 1    |
| 28-8070  | Lanyard                    | 13      | 55       | 1    | 60-9730  | Guide - Belt                | 13      | 26       | 2    |
| 28-8080  | Boot - Terminal            | 8       | 22       | 1    | 61-9760  | Wheel - Deck                | 13      | 32       | 2    |
| 28-8130  | Pin - Chute, Locking       | 13      | 54       | 1    | 61-9780  | Cap - Hub                   | 11      | 14       | 2    |
| 38-1420  | Switch - Interlock         | 7       | 2        | 1    | 61-9780  | Cap - Hub                   | 2       | 44       | 2    |
| 40-6230  | Spring - Torsion           | 13      | 51       | 1    | 62-3760  | Screw - Cap Hex. Hd.        | 9       | 27       | 1    |
| 44-5930  | Assembly - Deflector       |         | 11       | 1    | 62-3930  | Spring - Extension          | 5       | 5        | 1    |
| 44-5930  | Assembly - Deflector       | 13      | 11       | 1    | 62-3930  | Spring - Extension          | 3       | 6        | 1    |
| 47-0010  | Arm - Suspension, Front    | 2       | 13       | 2    | 62-4300  | Pad - Battery               | 8       | 25       | 1    |
| 47-0540  | Pedal                      | 3       | 19       | 2    | 62-5480  | Isolator - Seat             | 7       | 11       | 4    |
| 47-0550  | Bracket - Brake, Pedal     | 3       | 17       | 1    | 62-5490  | Support - Fuel Line         | 9       | 10       | 1    |
| 47-0560  | Bracket - Clutch, Pedal    | 3       | 12       | 1    | 63-5540  | Base - Seat                 | 7       | 3        | 1    |
| 47-0570  | Spacer - Pedal             | 3       | 16       | 3    | 63-5670  | Tube - Bumper, Seat Rod     | 7       | 7        | 1    |
| 47-0590  | Spindle - L.H.             | 2       | *        | 1    | 63-5830  | Link - Suspension, Deck     | 5       | 16       | 2    |
| 47-0600  | Spindle - R.H.             | 2       | 4        | 1    | 63-8360  | Key                         | 4       | 6        | 1    |
| 47-0610  | Tie Rod - Adjustable       | 2       | 34       | 1    | 65-2920  | Pad - Pedal, Foot           | 3       | 5        | 2    |
| 47-0700  | Bearing - Flange           | 2       | 27       | 1    | 65-5670  | Bolt - Shoulder             | 5       | 21       | 1    |
| 47-0760  | Support - Axle, Front      | 2       | 11       | 1    | 65-5670  | Screw - Shoulder            | 8       | 34       | 1    |
| 47-0770  | Shaft - Pivot, Pedal       | 3       | 8        | 1    | 66-1340  | Decal - Danger              | 13      | 34       | 1    |
| 47-0780  | Retainer - Shaft           | 3       | 9        | 1    | 66-6740  | Cover - Shaft, Steering     | 4       | 2        | 1    |
| 47-0930  | Footrest - R.H.            | 1       | 22       | 1    | 68-3650  | Decal - Warning, Deflector  | 13      | 13       | 1    |
| 47-0940  | Footrest - L.H.            | 1       | 16       | 1    | 76-1090  | Decal - Instructions        | 4       | 23       | 1    |
| 47-0960  | Spring - Compression       | 13      | 3        | 1    | 76-1340  | Decal - Made In USA         | 5       | 26       | 1    |
| 47-1140  | Retainer - Spring, Top     | 13      | 2        | 2    | 76-1540  | Arm - Suspension R.H.       | 12      | 16       | 1    |
| 47-1180  | Bracket - Engagement       | 13      | 1        | 1    | 76-1550  | Arm - Suspension L.H.       | 12      | *        | 1    |
| 47-1200  | Shaft - Adjusting          | 13      | 4        | 1    | 76-1560  | Spacer                      | 12      | 13       | 2    |
| 47-1290  | Brake - Parking            | 1       | 10       | 1    | 76-1560  | Spacer - Split              | 12      | 20       | 2    |
| 47-1840  | Bracket - Height-of-Cut    | 5       | 13       | 1    | 79-0370  | Decal - Danger              | 1       | 7        | 1    |
| 47-1850  | Lever - Height-of-Cut      | 5       | 6        | 1    | 80-2310  | Bracket - Bell Crank Mount  | 5       | 2        | 1    |
| 47-1910  | Solenoid                   | 6       | 12       | 1    | 80-2320  | Bracket - H.O.C., Engage    | 5       | 15       | 1    |
| 47-2060  | Bracket - Brake, Parking   | 1       | 19       | 1    | 80-2330  | Link - Bell Crank           | 8       | 35       | 1    |
| 47-2961  | Hose - Fuel Line           | 9       | 9        | 1    | 80-2340  | Bracket - Pivot, Inner      | 8       | 6        | 1    |
| 47-2981  | Hose - Fuel Line           | 9       | 9        | 1    | 80-2350  | Pivot - Outer               | 8       | 4        | 1    |
| 49-3242  | Assy. - Wheel, Steering    | 4       | 5        | 1    | 80-2360  | Crank - Bell, Deck Engage   | 5       | 22       | 1    |
| 54-3090  | Cable - Battery Ground     | 9       | 37       | 1    | 80-2370  | Shaft W.A. - Pivot          | 8       | 5        | 1    |
| 54-9220  | Decal - Caution, Deflector | 13      | 12       | 1    | 80-2400  | Lever W.A. - Engage         | 8       | 2        | 1    |
| 55-3570  | Cap - Fuel                 | 9       | 14       | 1    | 80-2430  | Axle - Front                | 2       | 18       | 1    |
| 56-2540  | Tube - Vent, Battery       | 8       | 37       | 1    | 80-2450  | Rack - Steering             | 2       | 19       | 1    |
| 56-6590  | Bolt - Wheel               | 13      | 33       | 2    | 80-2460  | Tie Rod - Fixed             | 2       | *        | 1    |
| 56-7030  | Body - Spindle             | 13      | 44       | 1    | 80-2530  | Assembly - Brake            | 13      | 50       | 1    |
| 56-7050  | Tank - Fuel                | 9       | 15       | 1    | 80-2550  | Pad - Brake                 | 13      | 6        | 1    |
| 56-7070  | Spring - Torsion, Clutch   | 3       | 11       | 1    | 80-2560  | Plate - Deck, Brake Mtg.    | 13      | 47       | 1    |
| 56-7080  | Spring - Torsion, Brake    | 3       | 18       | 1    | 80-2570  | Pin - Clevis                | 13      | 5        | 2    |

\*Not Illustrated

# TORO PART NUMBER INDEX (Cont.)

| Part No. | Description                | Pg. No. | Ref. No. | Qty. | Part No. | Description          | Pg. No. | Ref. No. | Qty. |
|----------|----------------------------|---------|----------|------|----------|----------------------|---------|----------|------|
| 80-2580  | Rod - Adjusting            | 13      | 52       | 1    | 218-461  | Nut - Lock           | 4       | 7        | 1    |
| 80-2600  | Battery - 12 Volt          | 8       | 24       | 1    | 218-560  | Cap - Battery        | 8       | 28       | 6    |
| 80-2620  | Rod - Base, Seat           | 7       | 8        | 1    | 231-116  | Tire                 | 2       | 42       | 2    |
| 80-2630  | Kicker - 32"               | 13      | 29       | 4    | 231-117  | Tire                 | 11      | 10       | 2    |
| 80-4350  | Shaft - Spindle            | 13      | 41       | 1    | 232-27   | Stem - Valve         | 11      | 16       | 2    |
| 80-4370  | Shield - Bearing           | 13      | 42       | 1    | 232-39   | Tube - Inner         | 11      | 11       | 2    |
| 80-4390  | Spacer - Hardened          | 13      | 43       | 1    | 232-44   | Tube - Inner         | 2       | 2        | 2    |
| 80-4430  | Blade - Recycler           | 13      | 40       | 1    | 233-25   | Knob                 | 4       | 13       | 1    |
| 80-4470  | Pulley                     | 13      | 22       | 1    | 233-48   | Knob                 | 8       | 1        | 2    |
| 80-4490  | Ring - Deck                | 13      | 48       | 4    | 233-48   | Knob                 | 5       | 19       | 1    |
| 80-4570  | Stiffener - Blade          | 13      | 37       | 1    | 237-27   | Valve Stem w/Cap     | 2       | 41       | 2    |
| 82-6150  | Assy. - Cover, Discharge   | 13      | 14       | 1    | 237-143  | O-Ring               | 8       | 27       | 2    |
| 82-6270  | Decal - Recycler           | 13      | 35       | 1    | 2411-32  | Ball Joint           | 8       | 31       | 1    |
| 83-7010  | Brace - Cover, Rear        | 13      | 17       | 1    | 2412-68  | Clamp                | 4       | 17       | 2    |
| 83-7020  | Spacer - Bearing           | 13      | 25       | 1    | 2412-68  | Clamp - Wire         | 7       | 4        | 1    |
| 88-3950  | Assembly - Seat            | 7       | 1        | 1    | 2412-98  | Clamp - Hose         | 9       | 8        | 2    |
| 88-9730  | Rim                        | 11      | 12       | 2    | 251-297  | Bearing              | 13      | 21       | 2    |
| 88-9800  | Cover - Gate, Shift        | 6       | 24       | 1    | 251-297  | Bearing              | 13      | 21       | 2    |
| 88-9930  | Switch - Micro, Short      | 6       | 4        | 1    | 257-11   | Washer               | 8       | 18       | 1    |
| 88-9931  | Switch - Micro             | 4       | 24       | 1    | 283-2    | Pin - Clevis         | 2       | 16       | 2    |
| 92-0860  | Frame                      | 6       | 14       | 1    | 283-2    | Pin - Clevis         | 13      | 45       | 2    |
| 92-0861  | Frame - Rear               | 12      | 8        | 1    | 283-42   | Pin - Clevis         | 12      | 18       | 2    |
| 92-0862  | Transaxle                  | 11      | 8        | 1    | 283-52   | Pin - Clevis         | 1       | 20       | 1    |
| 92-0864  | Standbar                   | 12      | 5        | 1    | 288-10   | Cap - Pipe           | 9       | 22       | 1    |
| 92-0865  | Support - Axle             | 12      | 9        | 2    | 289-19   | Nipple - Pipe        | 9       | 23       | 1    |
| 92-0866  | Body W.A. - Seat Support   | 6       | 8        | 1    | 302-5    | Fitting - Grease     | 2       | 1        | 2    |
| 92-0870  | V-Belt - Traction          | 11      | 4        | 1    | 302-49   | Fitting - Grease     | 2       | 17       | 2    |
| 92-0871  | Rod - Traction             | 9       | 29       | 1    | 321-4    | Screw - Cap Hex. Hd. | 13      | 8        | 1    |
| 92-0872  | Rod - Brake                | 11      | 18       | 1    | 321-4    | Screw - Cap Hex. Hd. | 3       | 10       | 1    |
| 92-0873  | Pulley - Engine            | 9       | 24       | 1    | 321-4    | Screw - Cap Hex. Hd. | 5       | 11       | 4    |
| 92-0874  | Pulley                     | 11      | 7        | 1    | 321-4    | Screw - Cap Hex. Hd. | 8       | 12       | 2    |
| 92-0875  | V-Belt                     | 13      | 24       | 1    | 321-4    | Screw - Cap Hex. Hd. | 6       | 13       | 2    |
| 92-0876  | Guard - Front              | 2       | 37       | 1    | 321-4    | Screw - Cap Hex. Hd. | 1       | 21       | 2    |
| 92-0877  | Panel - Seat Base, R.H.    | 6       | 21       | 1    | 322-3    | Screw - Cap Hex. Hd. | 13      | 30       | 15   |
| 92-0878  | Panel L.H. - Base, Seat    | 5       | 9        | 1    | 322-5    | Screw - Cap Hex. Hd. | 3       | 2        | 1    |
| 92-0879  | Spring                     | 9       | 1        | 1    | 322-5    | Screw - Cap Hex. Hd. | 12      | 6        | 15   |
| 92-0880  | Arm - Shift, Transaxle     | 11      | 23       | 1    | 322-5    | Screw - Cap Hex. Hd. | 6       | 6        | 2    |
| 92-0881  | Bracket W.A. - Traction    | 9       | 4        | 1    | 322-5    | Screw - Cap Hex. Hd. | 3       | 7        | 2    |
| 92-0883  | Plate - Mounting, Idler    | 9       | 2        | 1    | 322-5    | Screw - Cap Hex. Hd. | 8       | 8        | 4    |
| 92-0884  | Lever W.A. - Shaft         | 8       | 10       | 1    | 322-5    | Screw - Cap Hex. Hd. | 13      | 9        | 12   |
| 92-0887  | Support - Shift, Lower     | 8       | 19       | 1    | 322-5    | Screw - Cap Hex. Hd. | 2       | 9        | 8    |
| 92-0888  | Support - Shift, Upper     | 8       | 14       | 1    | 322-5    | Screw - Cap Hex. Hd. | 5       | 12       | 2    |
| 92-0889  | Link - Shift               | 11      | 1        | 1    | 322-5    | Screw - Cap Hex. Hd. | 1       | 14       | 10   |
| 92-0890  | Control - Throttle         | 4       | 15       | 1    | 322-5    | Screw - Cap Hex. Hd. | 4       | 16       | 8    |
| 92-0891  | Shaft W. A. - Shift        | 8       | 16       | 1    | 322-6    | Screw - Cap Hex. Hd. | 13      | 20       | 1    |
| 92-0894  | Spring - Torsion           | 8       | 11       | 1    | 322-7    | Screw - Cap Hex. Hd. | 9       | 28       | 1    |
| 92-0895  | Gate - Shift               | 6       | 3        | 1    | 322-12   | Screw - Cap Hex. Hd. | 12      | 10       | 4    |
| 92-0896  | Retainer - Spring          | 8       | 29       | 1    | 322-14   | Screw - Cap Hex. Hd. | 12      | 11       | 2    |
| 92-0897  | Spacer                     | 12      | 1        | 1    | 322-50   | Screw - Cap Hex. Hd. | 12      | 4        | 1    |
| 92-0898  | Guide - Belt               | 12      | 2        | 1    | 323-9    | Screw - Cap Hex. Hd. | 9       | 32       | 1    |
| 92-0899  | Guide - Belt, Lower        | 11      | 21       | 1    | 323-9    | Screw - Hex Hd. Cap  | 12      | 21       | 2    |
| 92-1751  | Decal - Shift Pattern      | 6       | 2        | 1    | 323-14   | Screw - Hex Hd. Cap  | 12      | 17       | 2    |
| 92-7243  | Decal - Control Panel      | 5       | 27       | 1    | 325-6    | Screw - Cap Hex. Hd. | 2       | 8        | 1    |
| 92-7244  | Decal - Deck Engage        | 4       | 9        | 1    | 329-4    | Screw - Cap Hex. Hd. | 11      | 3        | 1    |
| 92-7245  | Decal - H.O.C.             | 4       | 21       | 1    | 3218-1   | Nut - Jam            | 6       | 18       | 2    |
| 92-7974  | Tread - Foot R.H.          | 1       | *        | 1    | 3218-1   | Nut - Jam            | 9       | 38       | 1    |
| 92-7975  | Tread - Foot L.H.          | 1       | 15       | 1    | 3219-7   | Nut - Hex. Hd.       | 13      | 23       | 1    |
| 92-7985  | Decal - L.H. (Model 70080) | 5       | 10       | 1    | 3220-2   | Nut - Hex. Jam       | 2       | 7        | 1    |
| 92-7986  | Decal - L.H. (Model 70120) | 5       | 10       | 1    | 3230-18  | Bolt - Carriage      | 2       | 32       | 2    |
| 92-7987  | Decal - Recycler           | 1       | 3        | 1    | 3253-3   | Washer - Lock        | 11      | 2        | 1    |
| 92-7990  | Insert - Wheel, Steering   | 4       | 4        | 1    | 3253-3   | Washer - Lock        | 6       | 16       | 4    |
| 92-9521  | Decal - Recycler           | 13      | 35       | 1    | 3253-3   | Washer - Lock        | 9       | 18       | 2    |
| 217-80   | Rim                        | 2       | 3        | 2    | 3253-6   | Washer - Lock        | 9       | 26       | 1    |

\*Not Illustrated

# TORO PART NUMBER INDEX (Cont.)

3318-163

| Part No. | Description               | Pg. Ref.<br>No. No. Qty. | Part No.  | Description                 | Pg. Ref.<br>No. No. Qty. |
|----------|---------------------------|--------------------------|-----------|-----------------------------|--------------------------|
| 3254-2   | Washer - Lock, Int. Tooth | 9 5 4                    | 3296-29   | Nut - Lock                  | 5 1 7                    |
| 3254-2   | Washer - Lock, Int. Tooth | 11 20 1                  | 3296-29   | Nut - Lock                  | 1 2 14                   |
| 3254-5   | Washer - Lock, Int. Tooth | 4 8 1                    | 3296-29   | Nut - Lock                  | 12 3 17                  |
| 3256-14  | Washer - Flat             | 6 9 1                    | 3296-29   | Nut - Lock                  | 3 4 3                    |
| 3256-22  | Washer - Flat             | 8 13 2                   | 3296-29   | Nut - Lock                  | 6 5 2                    |
| 3256-22  | Washer - Flat             | 1 18 2                   | 3296-29   | Nut - Lock                  | 9 6 2                    |
| 3256-22  | Washer - Flat             | 9 30 1                   | 3296-29   | Nut - Lock                  | 2 10 8                   |
| 3256-23  | Washer - Flat             | 12 7 12                  | 3296-29   | Nut - Lock                  | 11 19 1                  |
| 3256-23  | Washer - Flat             | 6 7 2                    | 3296-29   | Nut - Lock                  | 13 19 24                 |
| 3256-23  | Washer - Flat             | 1 13 8                   | 3296-29   | Nut - Lock                  | 4 19 4                   |
| 3256-23  | Washer - Flat             | 5 17 4                   | 3296-29   | Nut - Lock                  | 8 32 4                   |
| 3256-23  | Washer - Flat             | 4 18 7                   | 3296-39   | Nut - Lock                  | 9 3 1                    |
| 3256-23  | Washer - Flat             | 2 23 6                   | 3296-39   | Nut - Lock                  | 12 19 1                  |
| 3256-23  | Washer - Flat             | 13 27 4                  | 3296-39   | Nut - Lock                  | 13 31 2                  |
| 3256-23  | Washer - Flat             | 8 33 2                   | 3296-42   | Nut - Lock                  | 6 15 2                   |
| 3256-24  | Washer - Flat             | 1 11 1                   | 3296-42   | Nut - Lock                  | 8 15 2                   |
| 3256-24  | Washer - Flat             | 12 15 4                  | 3296-42   | Nut - Lock                  | 1 17 2                   |
| 3256-24  | Washer - Flat             | 9 33 1                   | 3296-42   | Nut - Lock                  | 5 18 1                   |
| 3256-25  | Washer - Flat             | 9 25 1                   | 3296-47   | Nut - Lock                  | 12 12 1                  |
| 3256-26  | Washer - Flat             | 5 25 1                   | 3296-59   | Nut - Lock                  | 12 14 3                  |
| 3256-27  | Washer - Flat             | 3 13 3                   | 3296-59   | Nut - Lock                  | 13 15 1                  |
| 3256-35  | Washer - Flat             | 1 1 4                    | 32103-2   | Nut - Wing                  | 13 18 1                  |
| 3256-49  | Washer - Flat             | 13 56 1                  | 32103-12  | Nut - Wing                  | 8 20 1                   |
| 3256-57  | Washer - Flat             | 9 36 1                   | 32103-22  | Nut - Wing                  | 8 23 2                   |
| 3257-23  | Key                       | 11 6 1                   | 32104-76  | Screw - Self Tap Acorn Hd.  | 1 5 9                    |
| 3272-6   | Pin - Cotter              | 3 1 3                    | 32104-76  | Screw - Self-Tapping        | 4 14 2                   |
| 3272-6   | Pin - Cotter              | 5 4 2                    | 32107-11  | Nut - Square                | 9 17 2                   |
| 3272-6   | Pin - Cotter              | 1 12 1                   | 32120-47  | Ring - Retaining            | 8 7 1                    |
| 3272-6   | Pin - Cotter              | 2 14 2                   | 32120-64  | Ring - Retaining            | 11 5 1                   |
| 3272-6   | Pin - Cotter              | 11 22 1                  | 32121-9   | Pin - Roll                  | 2 28 1                   |
| 3272-6   | Pin - Cotter              | 9 31 1                   | 32121-16  | Pin - Roll                  | 8 17 1                   |
| 3272-6   | Pin - Cotter              | 13 36 2                  | 32121-25  | Pin - Roll                  | 8 3 1                    |
| 3272-12  | Pin - Cotter              | 2 45 2                   | 32121-78  | Pin - Roll                  | 4 3 1                    |
| 3272-16  | Pin - Cotter              | 11 9 1                   | 32121-78  | Pin - Roll                  | 8 9 1                    |
| 3274-51  | Screw - Hex. Socket Hd.   | 9 19 2                   | 32122-14  | Screw - Truss, Phillips Hd. | 13 38 8                  |
| 3290-134 | Screw - Machine           | 6 10 1                   | 32128-20  | Nut - Flange Hd.            | 7 5 4                    |
| 3290-191 | Nut - Speed               | 6 23 2                   | 32128-21  | Nut - Lock, Flange Hd.      | 2 25 1                   |
| 3290-282 | Rivet                     | 13 7 2                   | 32128-23  | Nut - Lock, Flange Hd.      | 2 26 1                   |
| 3290-282 | Rivet                     | 13 53 2                  | 32144-4   | Screw - Special             | 2 21 2                   |
| 3290-307 | Pin - Cotter, Hair        | 7 9 1                    | 32144-14  | Screw                       | 9 12 2                   |
| 3290-354 | Nut - Double              | 6 20 1                   | 32144-14  | Screw - Thread Forming      | 2 38 2                   |
| 3290-354 | Nut - Double              | 4 22 1                   | 32144-112 | Screw - Sems                | 6 22 2                   |
| 3290-378 | Tie - Cable               | 7 6 1                    | 32151-48  | Ring - Retaining            | 11 13 2                  |
| 3290-413 | Washer - Belleville       | 5 7 8                    | 32151-48  | Ring - Retaining, External  | 2 35 2                   |
| 3290-465 | Washer - Belleville       | 13 57 1                  | 32151-61  | Ring - Retaining            | 5 14 2                   |
| 3290-496 | Nut - Retainer            | 13 28 4                  |           |                             |                          |
| 3296-2   | Nut - Lock                | 6 19 1                   |           |                             |                          |
| 3296-4   | Nut - Lock                | 8 30 1                   |           |                             |                          |
| 3296-4   | Nut - Lock                | 2 36 4                   |           |                             |                          |
| 3296-8   | Nut - Lock                | 2 12 1                   |           |                             |                          |
| 3296-8   | Nut - Lock                | 5 23 1                   |           |                             |                          |
| 3296-8   | Nut - Lock                | 8 36 1                   |           |                             |                          |
| 3296-8   | Nut - Lock                | 13 46 1                  |           |                             |                          |

## OPTIONAL EQUIPMENT

- Easy Empty Bagging Kit . . . . . Model No. 79095
- Twin Bag Bagger Kit . . . . . Model No. 79085
- Tire Chains . . . . . Part No. 23-2340
- Hi-Sail Bagging Blade . . . . . Part No. 33-4750
- Wet Grass Bagging Kit . . . . . Part No. 38-5730

\*Not Illustrated

