



# Z Master® G3 Riding Mower

## with 60in or 72in TURBO FORCE® Side Discharge Mower

Model No. 74975—Serial No. 310000001 and Up

Model No. 74977—Serial No. 310000001 and Up

### Setup Instructions

## Loose Parts

Use the chart below to verify that all parts have been shipped.

Procedure	Description	Qty.	Use
<b>1</b>	No parts required	–	Unfold the crate.
<b>2</b>	No parts required	–	Check the tire pressure.
<b>3</b>	No parts required	–	Charge the battery.
<b>4</b>	No parts required	–	Check the engine oil level.
<b>5</b>	No parts required	–	Add fuel to the machine.
<b>6</b>	Bolt (1/2 x 3-1/4 inch) Locknut (1/2 inch)	1 1	Install ROPS Hardware
<b>7</b>	Number 2 general purpose lithium base or molybdenum base grease. (Purchase separately.)	1 tube	Check the machine for grease.
<b>8</b>	No parts required	–	Prepare the side discharge chute.
<b>9</b>	No parts required	–	Check the machine before delivery to the customer.
<b>10</b>	Operator's Manual Engine Owner's Manual Registration Card Operator training material Key	1 1 1 1 2	Delivering the machine to the customer.

# 1

## Unfolding the Crate

### No Parts Required

### Procedure

Refer to the Packaging Crate Instructions included with the machine.

# 2

## Checking the Tire Pressure

### No Parts Required

### Procedure

Pressure: 13 psi (90 kPa)

**Note:** The front caster wheel is a semi-pneumatic tire and does not need to be checked.

Check the air pressure in the drive tires.

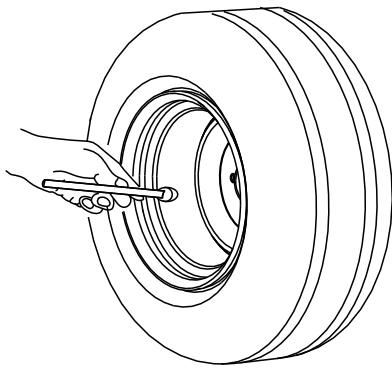


Figure 1

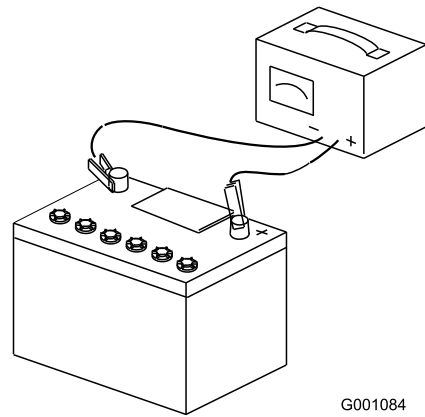


Figure 2

# 3

## Charging the Battery

### No Parts Required

#### Procedure

#### **⚠ WARNING**

Charging the battery produces gasses that can explode and cause serious injury.

- Keep cigarettes, sparks and flames away from the battery.
- Make sure the ignition switch is off.
- Ventilate when charging or using the battery in an enclosed space.

**Important:** Do not run the machine with the battery disconnected; electrical damage may occur to the engine.

Charge the battery. Refer to the *Operator's Manual* for instructions.

# 4

## Checking the Engine Oil Level

### No Parts Required

#### Procedure

Before you start the engine and use the machine, check the oil level in the engine crankcase; refer to Servicing the Engine Oil Level in *Operator's Manual*.

# 5

## Adding Fuel to the Machine

### No Parts Required

#### Procedure

1. Remove LPG fuel tank from the front of the mower.
2. Have the tank filled by trained and qualified personnel.

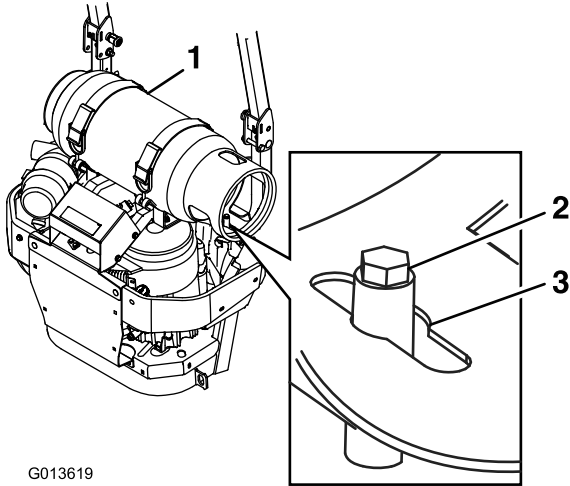
#### **⚠ CAUTION**

Under no circumstances should propane tanks filled beyond 80% capacity be used in service.

The use of overfilled tanks may result in the release of highly concentrated and extremely flammable liquid propane. Refer to the Safety section of the *Operator's manual*.

3. Cut the ties securing the tank brackets, and move them out of the way.

- Align the center hole over the mounting pin that points straight up on the mower as shown in Figure 3.



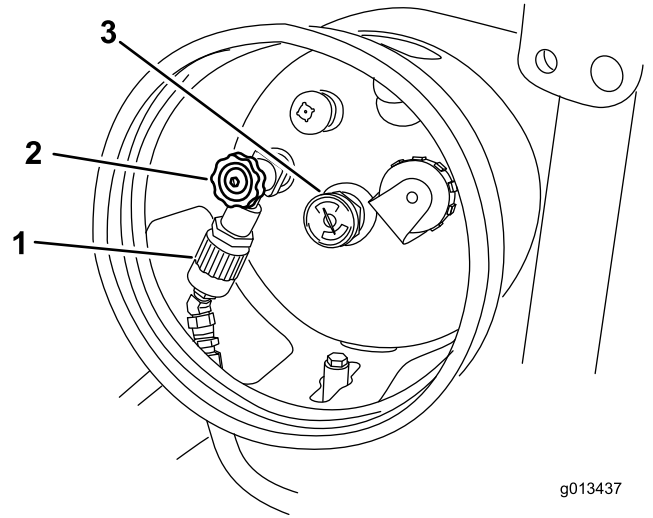
G013619

**Figure 3**

- Tank collar
- Mounting pin
- Center hole

**Important:** Valves and gauges may not function properly if the LPG tank is not installed correctly.

- Latch the brackets and make sure the tank is securely fastened to the mower.
- Carefully connect the fuel hose. Make sure the hose is not kinked.
- Slowly open the fuel valve to equalize the pressure in the tank. If the fuel valve is opened too quickly, the pressure relief valve is equipped with a back pressure check valve that will shut off the fuel supply. If this happens, close the fuel valve completely and wait five seconds. Slowly open the fuel valve.



g013437

**Figure 4**

- LPG fuel hose connection fitting
- Tank valve
- Fuel gauge fitting

- Check for leaks as described in the Safety section of the Operator's manual.

## 6

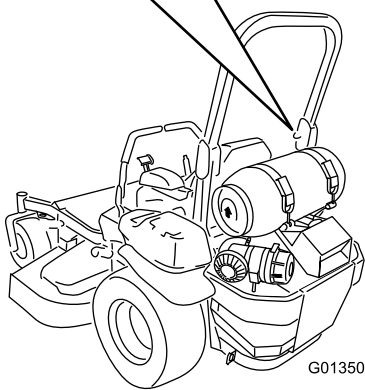
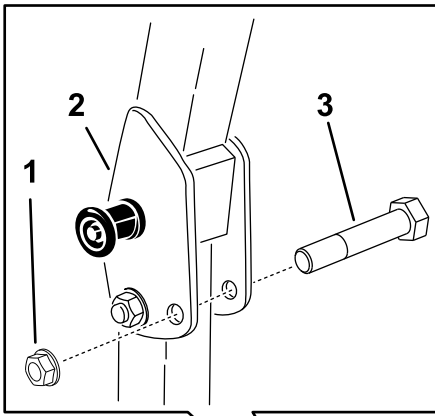
### Installing ROPS Hardware

#### Parts needed for this procedure:

1	Bolt (1/2 x 3-1/4 inch)
1	Locknut (1/2 inch)

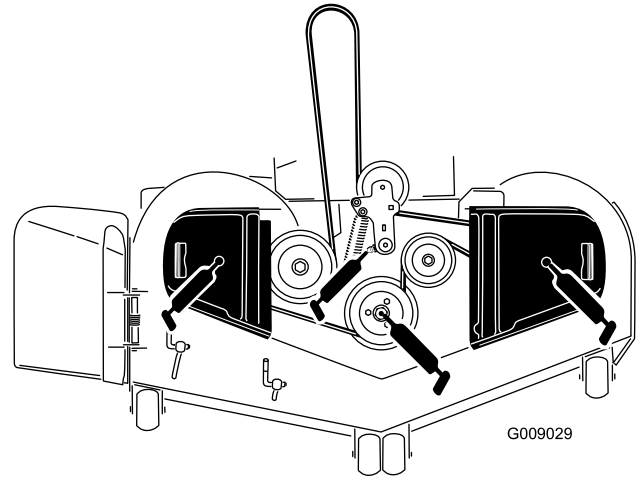
#### Procedure

Install the bolt (1/2 x 3-1/4 inch) and locknut (1/2 inch) into the open hole in the ROPS (Rollover Protection System) (Figure 5). This will prevent the roll bar from hitting the cylinder when lowered to the down position..



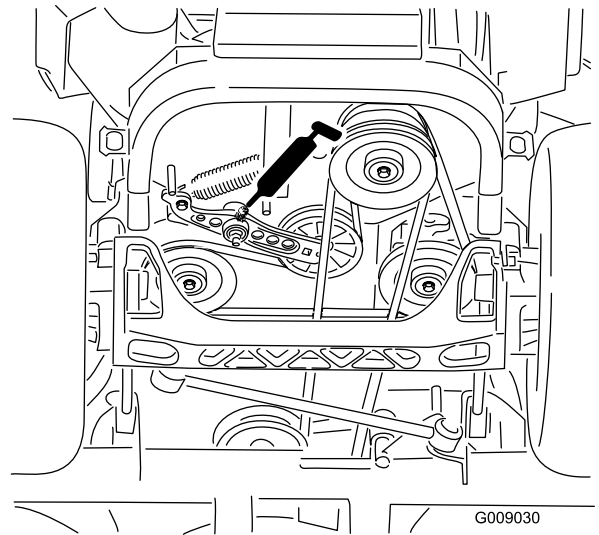
**Figure 5**

- 1. Locknut (1/2 inch)
- 2. ROPS
- 3. Bolt (1/2 x 3-1/4 inch)



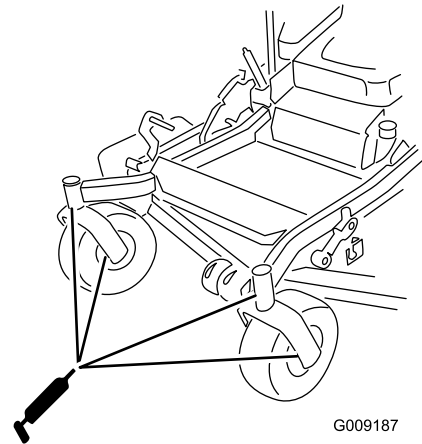
**Figure 6**

- 2. Check the grease for the pump drive belt idler arm.



**Figure 7**

- 3. Check the grease in the caster pivots and caster wheel bearings (Figure 8).



**Figure 8**

# 7

## Checking the Machine for Grease

### Parts needed for this procedure:

1 tube	Number 2 general purpose lithium base or molybdenum base grease. (Purchase separately.)
--------	---

### Procedure

- 1. Check the grease for the three spindle bearings and the idler pulley. If needed, add grease until it comes out of the lower seals.

# 8

## Checking the Side Discharge Chute

### No Parts Required

### Procedure

If there are plastic ties holding the side discharge chute up, remove them and lower the chute into place.

### **⚠ WARNING**

An uncovered discharge opening could allow the lawn mower to throw objects in the operator's or bystander's direction and result in serious injury or death. Also, contact with the blade could occur.

Never operate the lawn mower with the grass deflector removed unless you install a cover plate, a mulch plate, or a grass chute and catcher.

1. Make sure the **L** end of spring is installed behind the deck edge before installing the bolt as shown in Figure 9.
2. Place the **J** hook end of spring around grass deflector (Figure 9).

**Important:** The grass deflector must be free to rotate with downward tension. Lift the deflector up to the full open position and ensure that it rotates freely, without binding into the full down position.

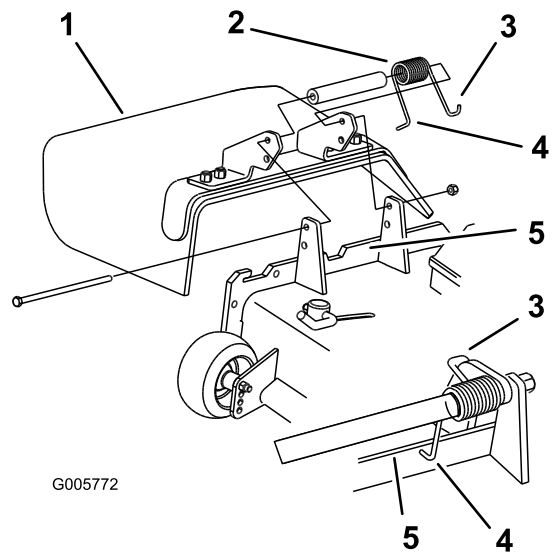


Figure 9

- |                         |   |
|-------------------------|---|
| 1. Grass Deflector      | 4. L end of spring, place behind deck edge before installing bolt |
| 2. Spring               | 5. Deck edge  |
| 3. J hook end of spring |   |

# 9

## Checking the Machine Before Delivery to the Customer

### No Parts Required

### Procedure

Before delivering the machine to the customer, ensure that you perform or have performed the procedures listed in the following table and initial each when finished. Refer to the *Operator's Manual* for instructions on performing these procedures.

Initial	Check Procedure
	Check the tire pressure.
	Check the level of the mower.
	Check that all mower spindles are greased.
	Check the engine oil level.
	Check the hydraulic fluid level.
	Check ROPS is secure.
	On liquid cooled machines, check the level of the coolant in the radiator and overflow bottle.
	Check the adjustment of the parking brake.
	Ensure that the machine tracks correctly; refer to the <i>Operator's Manual</i> for the adjustment procedure.
	Check the safety interlock system; refer to the <i>Operator's Manual</i> .
	Ensure that the PTO works.
	Check all fasteners you installed to ensure that they are tight.

When you finish setting up the machine, sign and date in the space provided below:

**Signature:** \_\_\_\_\_ **Date:** \_\_\_\_\_

# 10

## Delivering the Machine to the Customer

### Parts needed for this procedure:

1	<i>Operator's Manual</i>
1	<i>Engine Owner's Manual</i>
1	Registration Card
1	Operator training material
2	Key

### Procedure

At delivery, Fill in the model and serial number and complete the items listed in the following table and initial each when finished.

**Model No.** \_\_\_\_\_ **Serial No.** \_\_\_\_\_

Dealer Initial	Customer Initial	Check Procedure
		Show the customer where the following features are located and how they function: <ul style="list-style-type: none"> <li>• Fuel tank</li> <li>• Oil fill cap/Oil dipstick</li> <li>• Spark plug(s)</li> <li>• Engine oil filter</li> <li>• Engine oil drain</li> <li>• Fuel gauge, valve and hose</li> <li>• Air filter</li> <li>• Radiator coolant (if applicable)</li> <li>• Hydraulic fluid reservoir</li> <li>• Hydraulic filter</li> <li>• Battery</li> <li>• Ignition switch</li> <li>• Throttle lever</li> <li>• Choke (if applicable)</li> <li>• Power take off switch (PTO)</li> <li>• Motion control levers</li> <li>• Parking brake</li> <li>• Mower height-of-cut</li> <li>• Lift assist lever (if applicable)</li> </ul>
		<ul style="list-style-type: none"> <li>• Z Stand® (if applicable)</li> <li>• Adjustable seat</li> <li>• Hydraulic bypass valves</li> <li>• Rollover Protection System (ROPS)</li> <li>• Mower deck flow baffle</li> </ul>
		Refer to the <i>Operator's Manual</i> to point out safety procedures, operation, and maintenance procedures.
		Review the warranty statement as shown in the <i>Operator's Manual</i> .
		Describe the post sale service procedures for your store.
		Assist the customer in filling out and mailing the registration card or register online at <a href="http://www.Toro.com">www.Toro.com</a>
		Make sure that the customer receives the <i>Operator's Manual</i> , <i>Engine Owner's Manual</i> , <i>Set Up Instructions</i> , and operator training material.
		Make sure the customer knows the <i>Parts Catalog</i> is available at <a href="http://www.Toro.com">www.Toro.com</a> .
		Assist the customer in loading the mower.

**Note:** When you, the dealer representative, have finished delivering the machine to the customer, sign and date in the space provide below and keep a copy of this page for dealer records.

**Signature:** \_\_\_\_\_ **Date:** \_\_\_\_\_

**Signature:** \_\_\_\_\_ **Date:** \_\_\_\_\_