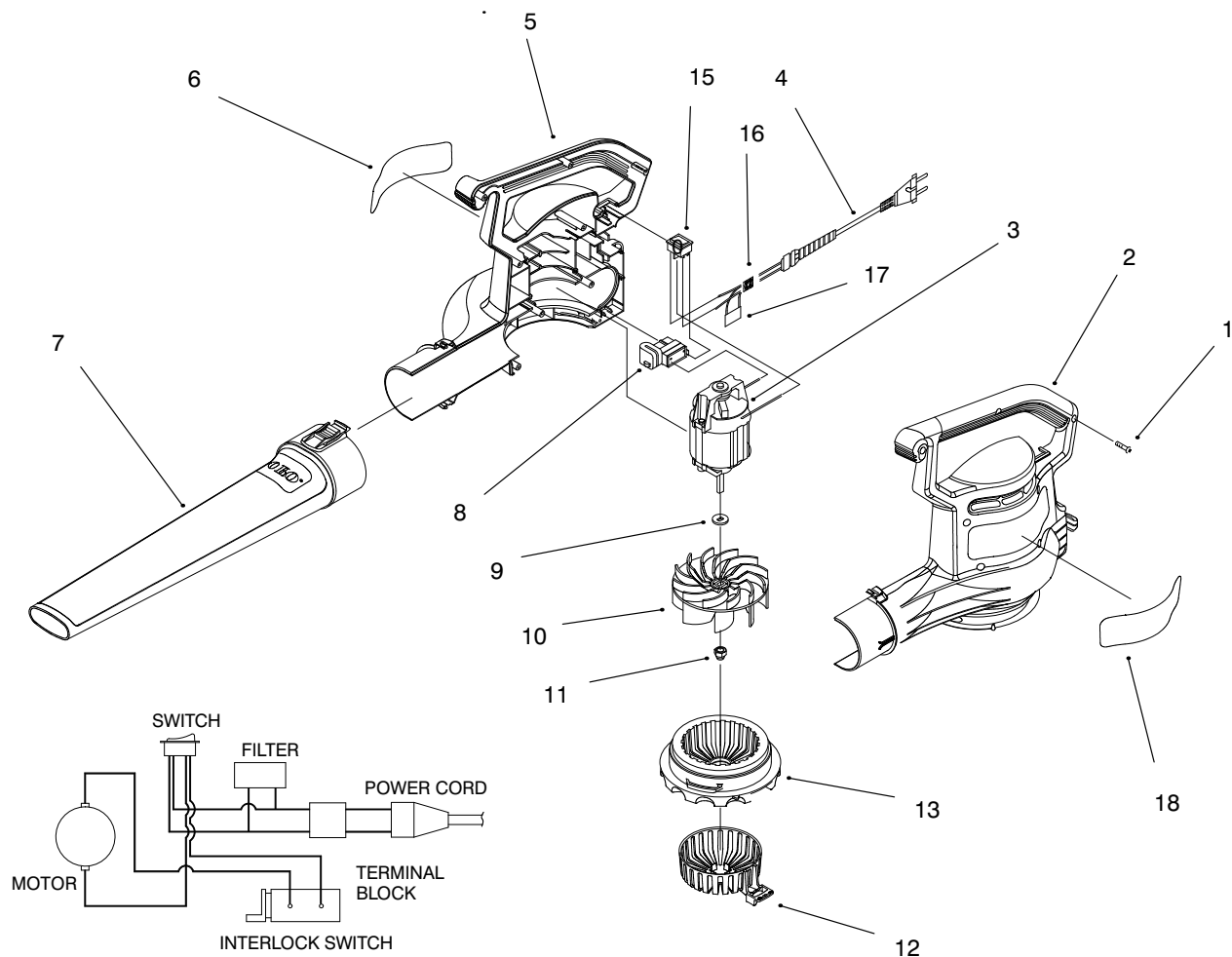




MODEL NO. 51557-6900001 &amp; UP

**PARTS  
CATALOG**
**SUPER BLOWER VAC, EUROPE**


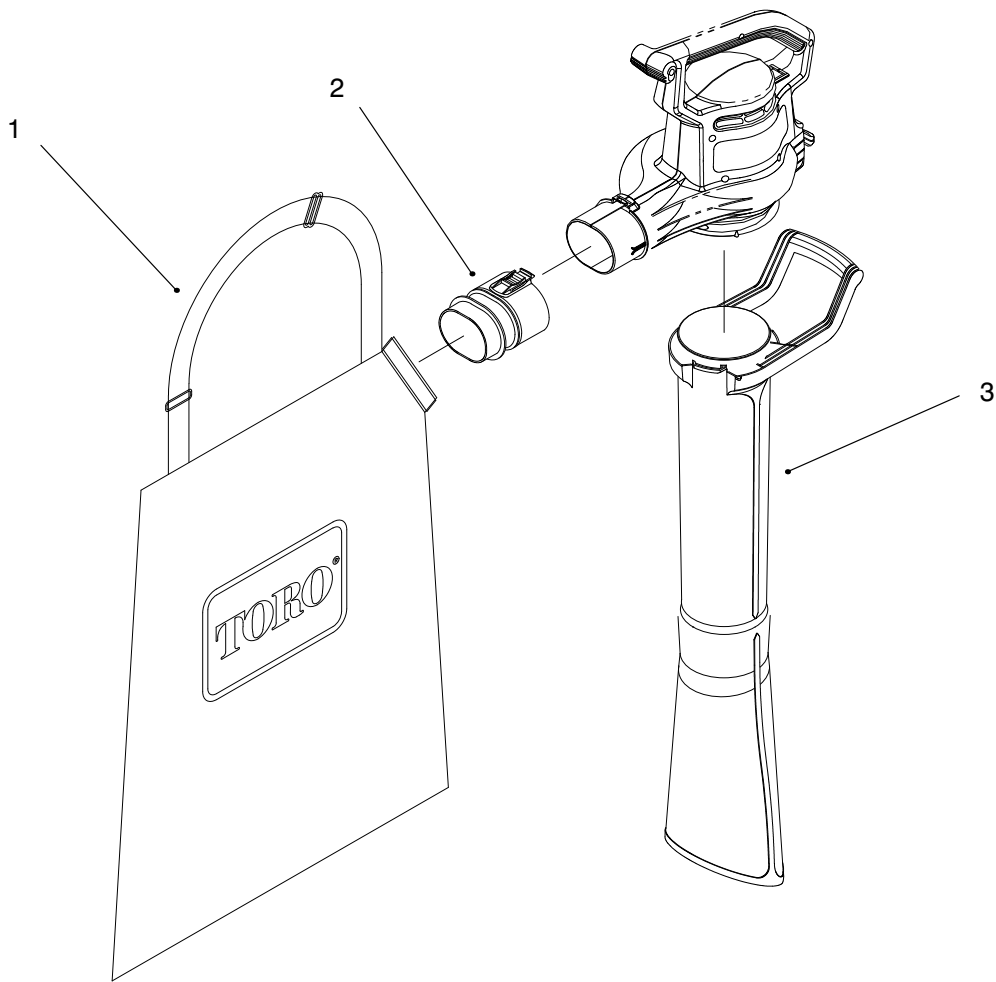
C-2351

**BLOWER ASSEMBLY**

| Ref. No. | Part No. | Description        | No. Used |
|----------|----------|--------------------|----------|
| 1        | 94-4496  | Screw - PH Tap     | 9        |
| 2        | 93-8719  | Housing - LH       | 1        |
| 3        | 93-8733  | Motor              | 1        |
| 4        | 93-0556  | Cord - Supply      | 1        |
| 5        | 93-8720  | Housing - RH       | 1        |
| 6        | 93-0579  | Decal - Logo       | 1        |
| 7        | 93-0571  | Tube - Blower      | 1        |
| 8        | 93-0598  | Switch - Interlock | 1        |
| 9        | 93-0585  | Washer             | 1        |
| 10       | 93-0564  | Impeller           | 1        |

| Ref. No. | Part No. | Description                                | No. Used |
|----------|----------|--|----------|
| 11       | 93-9993  | Nut - Impeller                             | 1        |
| 12       | 93-0559  | Choke - Air                                | 1        |
| 13       | 93-0569  | Cover - Inlet                              | 1        |
| 15       | 93-7646  | Switch - Power                             | 1        |
| 16       | 93-8745  | Terminal Block                             | 1        |
| 17       | 93-8459  | Filter - RFI                               | 1        |
| 18       | 93-9916  | Decal - Warning                            | 1        |
| *        | 93-8745  | Harness - Blower<br>(Incl. Ref. # 4,15-17) | 1        |

\* Not Illustrated



C-2352

**VACUUM TUBE AND BAG ASSEMBLY**

| Ref. No. | Part No. | Description      | No. Used |
|----------|----------|------------------|----------|
| 1        | 93-0583  | Bag              | 1        |
| 2        | 93-0574  | Tube - Bag Inlet | 1        |

| Ref. No. | Part No. | Description | No. Used |
|----------|----------|-------------|----------|
| 3        | 93-7648  | Tube Asm    | 1        |